



**June
2023**

Flint Hills MLS Statistics



**FLINT HILLS
ASSOCIATION
OF REALTORS®**

Dickinson County Housing Report



Market Overview

Dickinson County Home Sales Rose in June

Total home sales in Dickinson County rose by 3.1% last month to 33 units, compared to 32 units in June 2022. Total sales volume was \$5.2 million, up 18.2% from a year earlier.

The median sale price in June was \$137,000, up from \$126,750 a year earlier. Homes that sold in June were typically on the market for 11 days and sold for 96.5% of their list prices.

Dickinson County Active Listings Up at End of June

The total number of active listings in Dickinson County at the end of June was 53 units, up from 44 at the same point in 2022. This represents a 2.4 months' supply of homes available for sale. The median list price of homes on the market at the end of June was \$160,000.

During June, a total of 23 contracts were written up from 18 in June 2022. At the end of the month, there were 40 contracts still pending.

Report Contents

- Summary Statistics – Page 2
- Closed Listing Analysis – Page 3
- Active Listings Analysis – Page 7
- Months' Supply Analysis – Page 11
- New Listings Analysis – Page 12
- Contracts Written Analysis – Page 15
- Pending Contracts Analysis – Page 19

Contact Information

Margaret Pendleton, Association Executive
 Flint Hills Association of REALTORS®
 205 S. Seth Child Road
 Manhattan, KS 66502
 785-776-1203
ae@flinthillsrealtors.net
www.flinthillsrealtors.net



**June
2023**

Flint Hills MLS Statistics



**FLINT HILLS
ASSOCIATION
OF REALTORS®**

Dickinson County Summary Statistics

| June MLS Statistics Three-year History | | Current Month | | | Year-to-Date | | |
|---|------------------------------|----------------|----------------|----------------|----------------|----------------|----------------|
| | | 2023 | 2022 | 2021 | 2023 | 2022 | 2021 |
| Home Sales | | 33 | 32 | 23 | 138 | 141 | 132 |
| Change from prior year | | 3.1% | 39.1% | -25.8% | -2.1% | 6.8% | -0.8% |
| Active Listings | | 53 | 44 | 43 | N/A | N/A | N/A |
| Change from prior year | | 20.5% | 2.3% | -46.9% | | | |
| Months' Supply | | 2.4 | 1.7 | 1.7 | N/A | N/A | N/A |
| Change from prior year | | 41.2% | 0.0% | -58.5% | | | |
| New Listings | | 36 | 31 | 34 | 179 | 172 | 157 |
| Change from prior year | | 16.1% | -8.8% | 0.0% | 4.1% | 9.6% | -13.3% |
| Contracts Written | | 23 | 18 | 24 | 153 | 143 | 147 |
| Change from prior year | | 27.8% | -25.0% | 9.1% | 7.0% | -2.7% | -3.9% |
| Pending Contracts | | 40 | 33 | 52 | N/A | N/A | N/A |
| Change from prior year | | 21.2% | -36.5% | 30.0% | | | |
| Sales Volume (1,000s) | | 5,236 | 4,430 | 3,608 | 20,735 | 20,155 | 18,568 |
| Change from prior year | | 18.2% | 22.8% | -13.8% | 2.9% | 8.5% | 14.5% |
| Average | Sale Price | 158,678 | 138,428 | 156,887 | 150,256 | 142,943 | 140,664 |
| | Change from prior year | 14.6% | -11.8% | 16.2% | 5.1% | 1.6% | 15.3% |
| | List Price of Actives | 189,811 | 161,589 | 143,798 | N/A | N/A | N/A |
| | Change from prior year | 17.5% | 12.4% | 17.3% | | | |
| | Days on Market | 30 | 38 | 30 | 45 | 43 | 54 |
| Change from prior year | -21.1% | 26.7% | -71.2% | 4.7% | -20.4% | -36.5% | |
| | Percent of List | 93.8% | 95.2% | 102.1% | 95.2% | 96.2% | 97.3% |
| Change from prior year | -1.5% | -6.8% | 9.4% | -1.0% | -1.1% | 6.0% | |
| | Percent of Original | 92.3% | 93.1% | 101.5% | 92.4% | 93.7% | 95.1% |
| Change from prior year | -0.9% | -8.3% | 13.8% | -1.4% | -1.5% | 6.5% | |
| Median | Sale Price | 137,000 | 126,750 | 150,000 | 135,000 | 135,000 | 123,500 |
| | Change from prior year | 8.1% | -15.5% | 24.0% | 0.0% | 9.3% | 5.6% |
| | List Price of Actives | 160,000 | 139,950 | 120,000 | N/A | N/A | N/A |
| | Change from prior year | 14.3% | 16.6% | 20.6% | | | |
| | Days on Market | 11 | 13 | 5 | 14 | 17 | 17 |
| Change from prior year | -15.4% | 160.0% | -90.7% | -17.6% | 0.0% | -65.3% | |
| | Percent of List | 96.5% | 98.3% | 100.0% | 97.1% | 98.7% | 97.7% |
| Change from prior year | -1.8% | -1.7% | 2.8% | -1.6% | 1.0% | 2.2% | |
| | Percent of Original | 96.0% | 97.5% | 100.0% | 94.4% | 97.3% | 96.5% |
| Change from prior year | -1.5% | -2.5% | 4.2% | -3.0% | 0.8% | 2.7% | |

Note: Year-to-date statistics cannot be calculated for Active Listings, Months' Supply and Pending Contracts.



Dickinson County Closed Listings Analysis

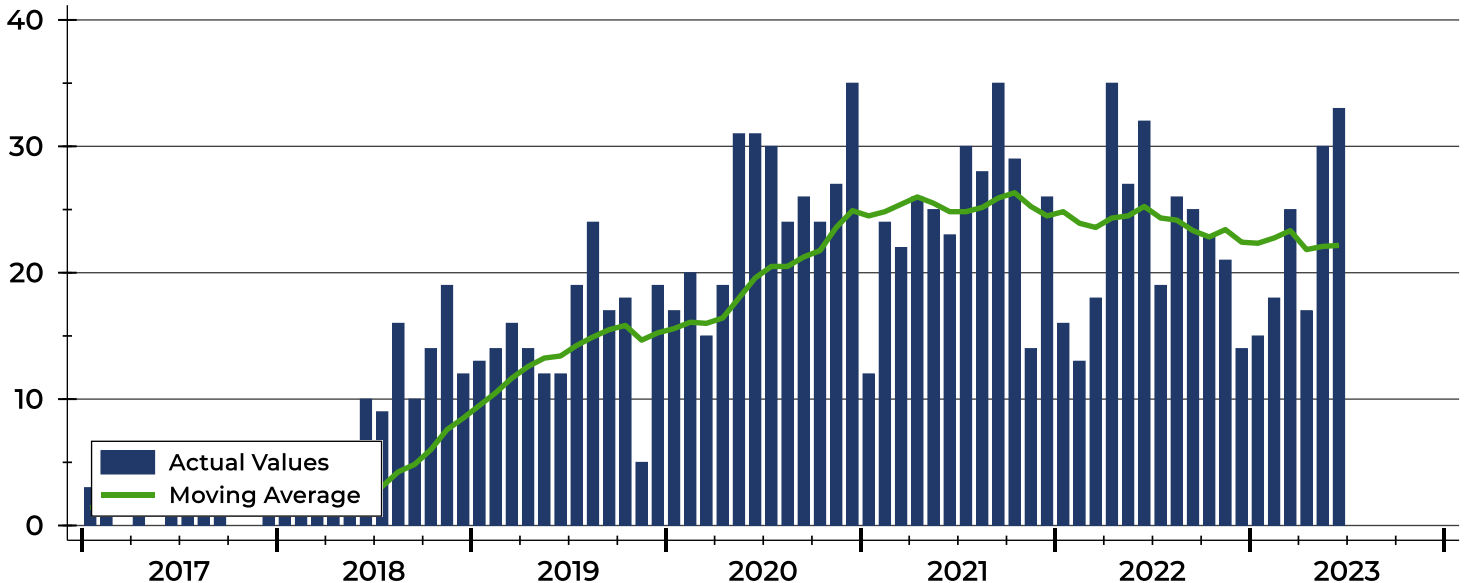
| Summary Statistics for Closed Listings | | 2023 | June 2022 | Change | 2023 | Year-to-Date 2022 | Change |
|--|---------------------|---------|-----------|--------|---------|-------------------|--------|
| Closed Listings | | 33 | 32 | 3.1% | 138 | 141 | -2.1% |
| Volume (1,000s) | | 5,236 | 4,430 | 18.2% | 20,735 | 20,155 | 2.9% |
| Months' Supply | | 2.4 | 1.7 | 41.2% | N/A | N/A | N/A |
| Average | Sale Price | 158,678 | 138,428 | 14.6% | 150,256 | 142,943 | 5.1% |
| | Days on Market | 30 | 38 | -21.1% | 45 | 43 | 4.7% |
| | Percent of List | 93.8% | 95.2% | -1.5% | 95.2% | 96.2% | -1.0% |
| | Percent of Original | 92.3% | 93.1% | -0.9% | 92.4% | 93.7% | -1.4% |
| Median | Sale Price | 137,000 | 126,750 | 8.1% | 135,000 | 135,000 | 0.0% |
| | Days on Market | 11 | 13 | -15.4% | 14 | 17 | -17.6% |
| | Percent of List | 96.5% | 98.3% | -1.8% | 97.1% | 98.7% | -1.6% |
| | Percent of Original | 96.0% | 97.5% | -1.5% | 94.4% | 97.3% | -3.0% |

A total of 33 homes sold in Dickinson County in June, up from 32 units in June 2022. Total sales volume rose to \$5.2 million compared to \$4.4 million in the previous year.

The median sales price in June was \$137,000, up 8.1% compared to the prior year. Median days on market was 11 days, up from 8 days in May, but down from 13 in June 2022.

History of Closed Listings

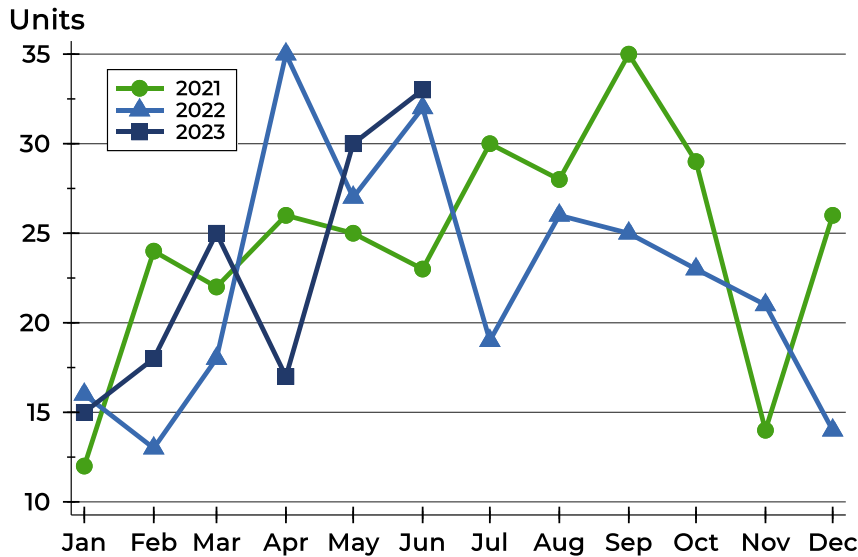
Units





Dickinson County Closed Listings Analysis

Closed Listings by Month



| Month | 2021 | 2022 | 2023 |
|-----------|------|------|------|
| January | 12 | 16 | 15 |
| February | 24 | 13 | 18 |
| March | 22 | 18 | 25 |
| April | 26 | 35 | 17 |
| May | 25 | 27 | 30 |
| June | 23 | 32 | 33 |
| July | 30 | 19 | 30 |
| August | 28 | 26 | 26 |
| September | 35 | 25 | 25 |
| October | 29 | 23 | 23 |
| November | 14 | 21 | 14 |
| December | 26 | 14 | 14 |

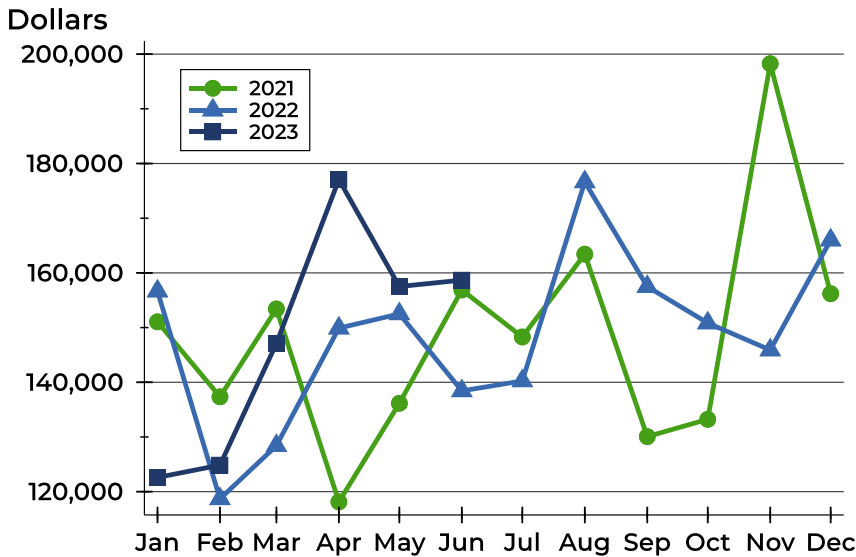
Closed Listings by Price Range

| Price Range | Sales | | Months' Supply | Sale Price | | Days on Market | | Price as % of List | | Price as % of Orig. | |
|---------------------|--------|---------|----------------|------------|---------|----------------|------|--------------------|--------|---------------------|--------|
| | Number | Percent | | Average | Median | Avg. | Med. | Avg. | Med. | Avg. | Med. |
| Below \$25,000 | 3 | 9.1% | 0.0 | 14,000 | 11,000 | 4 | 4 | 80.8% | 84.0% | 80.8% | 84.0% |
| \$25,000-\$49,999 | 4 | 12.1% | 1.9 | 40,125 | 40,250 | 57 | 23 | 81.2% | 80.5% | 81.2% | 80.5% |
| \$50,000-\$99,999 | 5 | 15.2% | 3.1 | 70,800 | 75,000 | 58 | 35 | 90.2% | 96.5% | 85.8% | 88.2% |
| \$100,000-\$124,999 | 2 | 6.1% | 0.8 | 116,000 | 116,000 | 15 | 15 | 98.0% | 98.0% | 98.0% | 98.0% |
| \$125,000-\$149,999 | 5 | 15.2% | 1.6 | 136,200 | 137,000 | 17 | 5 | 100.4% | 100.0% | 100.4% | 100.0% |
| \$150,000-\$174,999 | 2 | 6.1% | 2.4 | 154,750 | 154,750 | 1 | 1 | 94.6% | 94.6% | 94.6% | 94.6% |
| \$175,000-\$199,999 | 3 | 9.1% | 0.7 | 189,333 | 190,000 | 48 | 48 | 98.3% | 98.1% | 93.0% | 92.6% |
| \$200,000-\$249,999 | 2 | 6.1% | 2.8 | 242,733 | 242,733 | 4 | 4 | 94.3% | 94.3% | 94.3% | 94.3% |
| \$250,000-\$299,999 | 3 | 9.1% | 6.0 | 264,667 | 269,000 | 22 | 17 | 98.1% | 98.2% | 98.1% | 98.2% |
| \$300,000-\$399,999 | 2 | 6.1% | 1.8 | 329,950 | 329,950 | 7 | 7 | 100.0% | 100.0% | 100.0% | 100.0% |
| \$400,000-\$499,999 | 2 | 6.1% | 4.0 | 475,000 | 475,000 | 49 | 49 | 105.9% | 105.9% | 100.3% | 100.3% |
| \$500,000-\$749,999 | 0 | 0.0% | N/A | N/A | N/A | N/A | N/A | N/A | N/A | N/A | N/A |
| \$750,000-\$999,999 | 0 | 0.0% | N/A | N/A | N/A | N/A | N/A | N/A | N/A | N/A | N/A |
| \$1,000,000 and up | 0 | 0.0% | N/A | N/A | N/A | N/A | N/A | N/A | N/A | N/A | N/A |



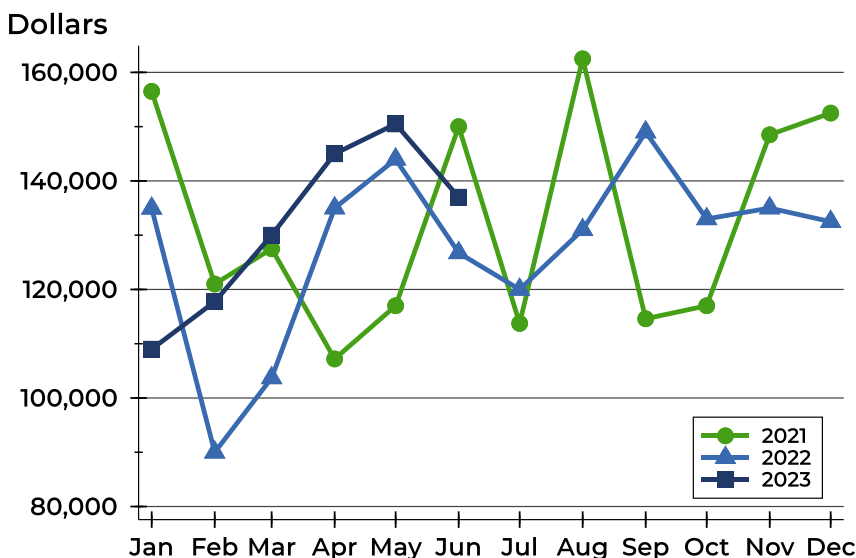
Dickinson County Closed Listings Analysis

Average Price



| Month | 2021 | 2022 | 2023 |
|-----------|---------|---------|----------------|
| January | 151,054 | 156,669 | 122,588 |
| February | 137,346 | 118,692 | 124,856 |
| March | 153,409 | 128,411 | 147,088 |
| April | 118,131 | 149,900 | 177,073 |
| May | 136,158 | 152,506 | 157,510 |
| June | 156,887 | 138,428 | 158,678 |
| July | 148,288 | 140,253 | |
| August | 163,428 | 176,640 | |
| September | 130,069 | 157,487 | |
| October | 133,224 | 150,839 | |
| November | 198,256 | 145,900 | |
| December | 156,196 | 166,000 | |

Median Price

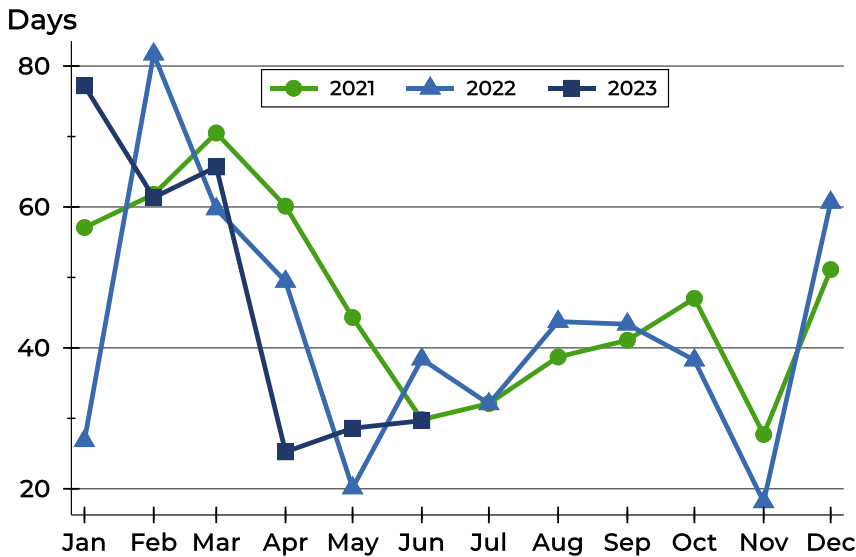


| Month | 2021 | 2022 | 2023 |
|-----------|---------|---------|----------------|
| January | 156,500 | 134,950 | 109,000 |
| February | 121,000 | 90,000 | 117,750 |
| March | 127,500 | 103,700 | 130,000 |
| April | 107,200 | 135,000 | 145,000 |
| May | 117,000 | 144,000 | 150,500 |
| June | 150,000 | 126,750 | 137,000 |
| July | 113,750 | 120,000 | |
| August | 162,500 | 131,000 | |
| September | 114,600 | 149,000 | |
| October | 117,000 | 133,000 | |
| November | 148,500 | 135,000 | |
| December | 152,500 | 132,500 | |



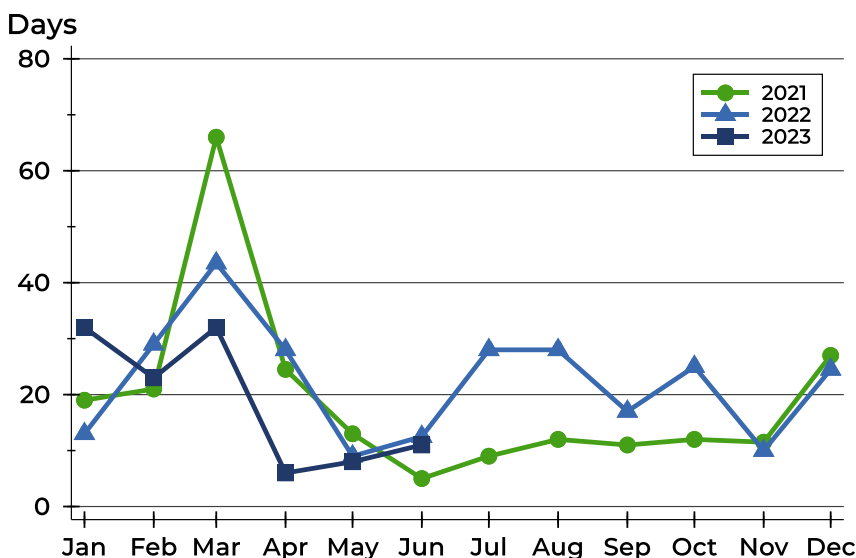
Dickinson County Closed Listings Analysis

Average DOM



| Month | 2021 | 2022 | 2023 |
|-----------|------|------|-----------|
| January | 57 | 27 | 77 |
| February | 62 | 82 | 61 |
| March | 71 | 60 | 66 |
| April | 60 | 49 | 25 |
| May | 44 | 20 | 29 |
| June | 30 | 38 | 30 |
| July | 32 | 32 | |
| August | 39 | 44 | |
| September | 41 | 43 | |
| October | 47 | 38 | |
| November | 28 | 18 | |
| December | 51 | 61 | |

Median DOM



| Month | 2021 | 2022 | 2023 |
|-----------|------|------|-----------|
| January | 19 | 13 | 32 |
| February | 21 | 29 | 23 |
| March | 66 | 44 | 32 |
| April | 25 | 28 | 6 |
| May | 13 | 9 | 8 |
| June | 5 | 13 | 11 |
| July | 9 | 28 | |
| August | 12 | 28 | |
| September | 11 | 17 | |
| October | 12 | 25 | |
| November | 12 | 10 | |
| December | 27 | 25 | |



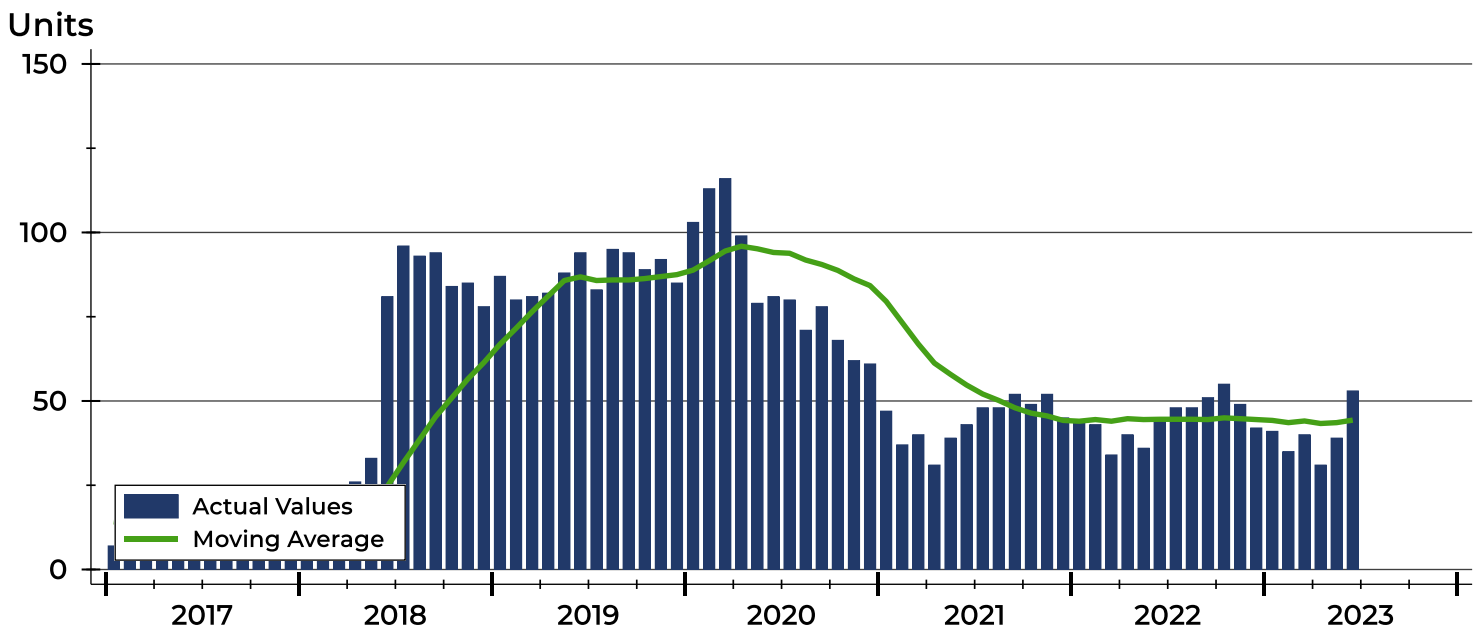
Dickinson County Active Listings Analysis

| Summary Statistics for Active Listings | | 2023 | End of June 2022 | Change |
|--|---------------------|----------------|------------------|--------|
| Active Listings | | 53 | 44 | 20.5% |
| Volume (1,000s) | | 10,060 | 7,110 | 41.5% |
| Months' Supply | | 2.4 | 1.7 | 41.2% |
| Average | List Price | 189,811 | 161,589 | 17.5% |
| | Days on Market | 68 | 76 | -10.5% |
| | Percent of Original | 95.8% | 96.5% | -0.7% |
| Median | List Price | 160,000 | 139,950 | 14.3% |
| | Days on Market | 52 | 41 | 26.8% |
| | Percent of Original | 100.0% | 100.0% | 0.0% |

A total of 53 homes were available for sale in Dickinson County at the end of June. This represents a 2.4 months' supply of active listings.

The median list price of homes on the market at the end of June was \$160,000, up 14.3% from 2022. The typical time on market for active listings was 52 days, up from 41 days a year earlier.

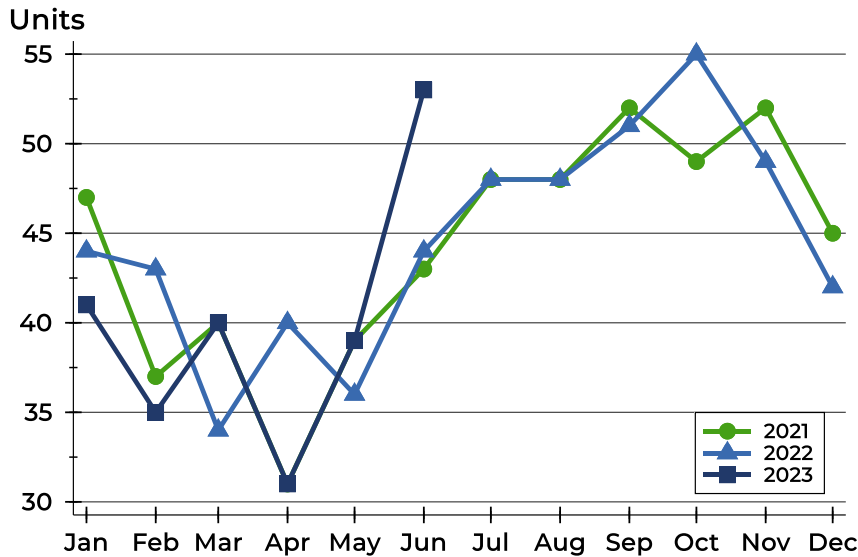
History of Active Listings





Dickinson County Active Listings Analysis

Active Listings by Month



| Month | 2021 | 2022 | 2023 |
|-----------|------|------|------|
| January | 47 | 44 | 41 |
| February | 37 | 43 | 35 |
| March | 40 | 34 | 40 |
| April | 31 | 40 | 31 |
| May | 39 | 36 | 39 |
| June | 43 | 44 | 53 |
| July | 48 | 48 | 48 |
| August | 48 | 48 | 48 |
| September | 52 | 51 | 51 |
| October | 49 | 55 | 49 |
| November | 52 | 49 | 49 |
| December | 45 | 42 | 42 |

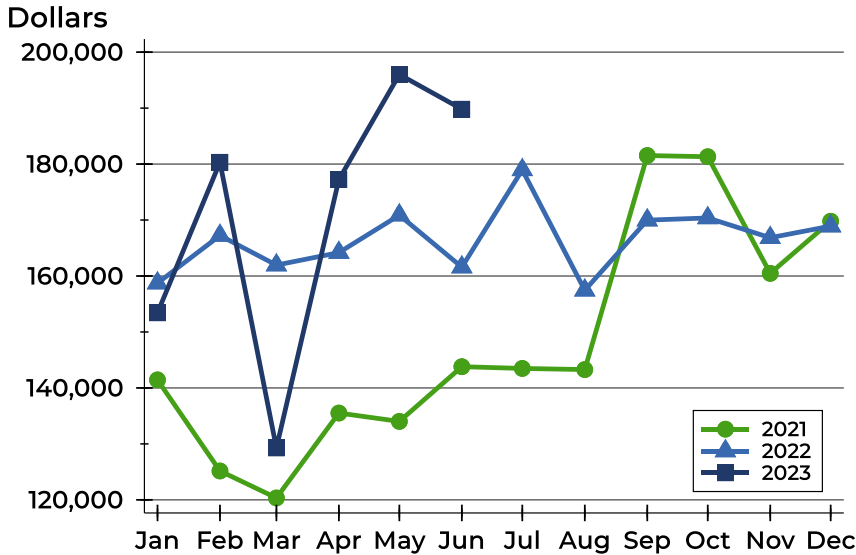
Active Listings by Price Range

| Price Range | Active Listings Number | Active Listings Percent | Months' Supply | List Price Average | List Price Median | Days on Market Avg. | Days on Market Med. | Price as % of Orig. Avg. | Price as % of Orig. Med. |
|---------------------|------------------------|-------------------------|----------------|--------------------|-------------------|---------------------|---------------------|--------------------------|--------------------------|
| Below \$25,000 | 0 | 0.0% | 0.0 | N/A | N/A | N/A | N/A | N/A | N/A |
| \$25,000-\$49,999 | 4 | 7.5% | 1.9 | 36,450 | 37,000 | 130 | 79 | 81.5% | 90.9% |
| \$50,000-\$99,999 | 12 | 22.6% | 3.1 | 76,317 | 73,200 | 77 | 42 | 94.6% | 98.7% |
| \$100,000-\$124,999 | 2 | 3.8% | 0.8 | 120,950 | 120,950 | 52 | 52 | 98.0% | 98.0% |
| \$125,000-\$149,999 | 5 | 9.4% | 1.6 | 136,880 | 135,000 | 63 | 30 | 95.8% | 94.3% |
| \$150,000-\$174,999 | 4 | 7.5% | 2.4 | 153,750 | 152,500 | 111 | 61 | 96.9% | 97.0% |
| \$175,000-\$199,999 | 1 | 1.9% | 0.7 | 199,900 | 199,900 | 25 | 25 | 95.2% | 95.2% |
| \$200,000-\$249,999 | 7 | 13.2% | 2.8 | 225,929 | 225,000 | 71 | 75 | 98.0% | 100.0% |
| \$250,000-\$299,999 | 14 | 26.4% | 6.0 | 271,986 | 267,450 | 42 | 29 | 98.2% | 100.0% |
| \$300,000-\$399,999 | 2 | 3.8% | 1.8 | 374,450 | 374,450 | 35 | 35 | 100.0% | 100.0% |
| \$400,000-\$499,999 | 1 | 1.9% | 4.0 | 420,000 | 420,000 | 58 | 58 | 97.7% | 97.7% |
| \$500,000-\$749,999 | 1 | 1.9% | N/A | 699,000 | 699,000 | 53 | 53 | 100.0% | 100.0% |
| \$750,000-\$999,999 | 0 | 0.0% | N/A | N/A | N/A | N/A | N/A | N/A | N/A |
| \$1,000,000 and up | 0 | 0.0% | N/A | N/A | N/A | N/A | N/A | N/A | N/A |



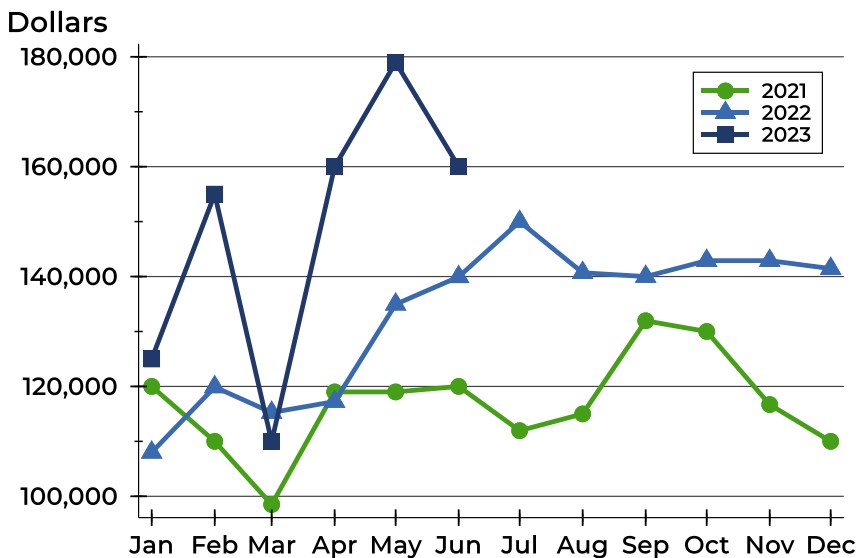
Dickinson County Active Listings Analysis

Average Price



| Month | 2021 | 2022 | 2023 |
|------------------|---------|---------|----------------|
| January | 141,438 | 158,727 | 153,415 |
| February | 125,165 | 167,237 | 180,323 |
| March | 120,346 | 161,947 | 129,272 |
| April | 135,515 | 164,188 | 177,229 |
| May | 134,018 | 170,878 | 196,013 |
| June | 143,798 | 161,589 | 189,811 |
| July | 143,488 | 178,969 | |
| August | 143,283 | 157,456 | |
| September | 181,525 | 169,978 | |
| October | 181,312 | 170,373 | |
| November | 160,473 | 166,845 | |
| December | 169,787 | 168,914 | |

Median Price

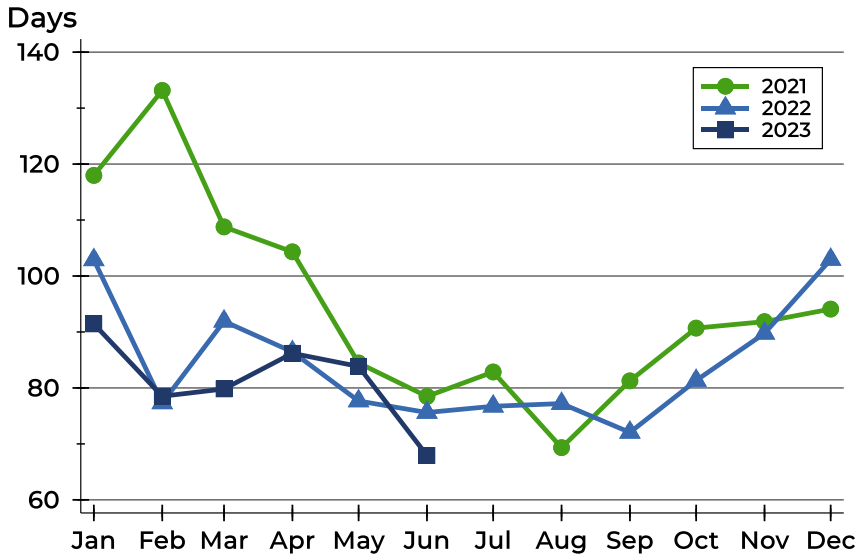


| Month | 2021 | 2022 | 2023 |
|------------------|---------|---------|----------------|
| January | 120,000 | 108,000 | 125,000 |
| February | 110,000 | 119,900 | 155,000 |
| March | 98,500 | 115,250 | 109,950 |
| April | 119,000 | 117,250 | 160,000 |
| May | 119,000 | 134,950 | 179,000 |
| June | 120,000 | 139,950 | 160,000 |
| July | 111,950 | 150,000 | |
| August | 115,000 | 140,700 | |
| September | 131,950 | 140,000 | |
| October | 130,000 | 142,900 | |
| November | 116,700 | 142,900 | |
| December | 110,000 | 141,450 | |



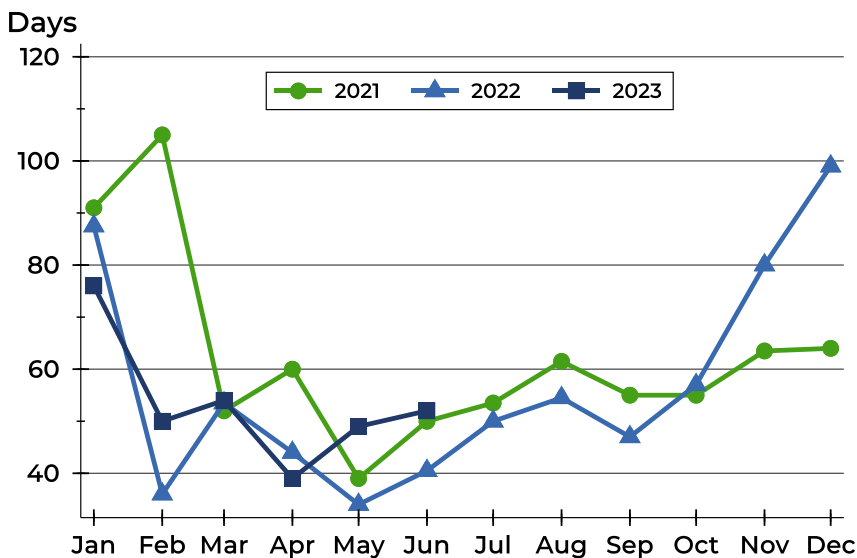
Dickinson County Active Listings Analysis

Average DOM



| Month | 2021 | 2022 | 2023 |
|-----------|------|------|-----------|
| January | 118 | 103 | 91 |
| February | 133 | 77 | 79 |
| March | 109 | 92 | 80 |
| April | 104 | 86 | 86 |
| May | 84 | 78 | 84 |
| June | 78 | 76 | 68 |
| July | 83 | 77 | |
| August | 69 | 77 | |
| September | 81 | 72 | |
| October | 91 | 81 | |
| November | 92 | 90 | |
| December | 94 | 103 | |

Median DOM

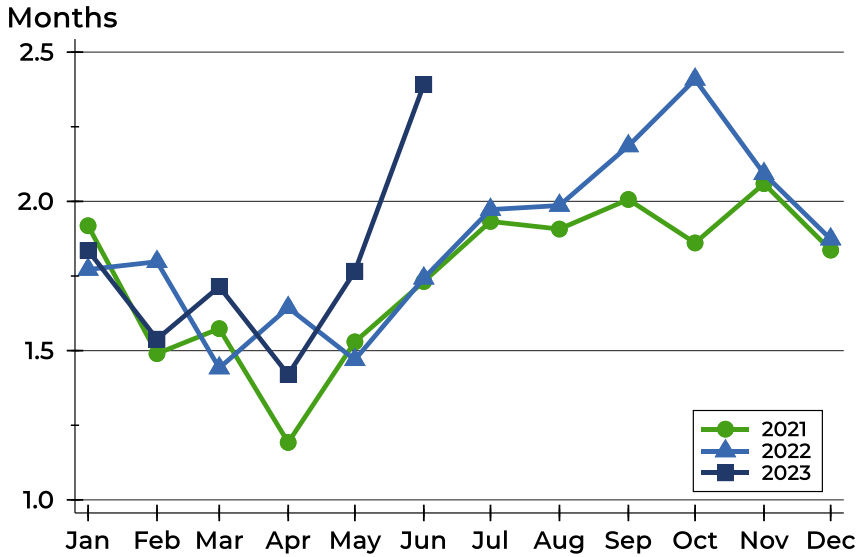


| Month | 2021 | 2022 | 2023 |
|-----------|------|------|-----------|
| January | 91 | 88 | 76 |
| February | 105 | 36 | 50 |
| March | 52 | 54 | 54 |
| April | 60 | 44 | 39 |
| May | 39 | 34 | 49 |
| June | 50 | 41 | 52 |
| July | 54 | 50 | |
| August | 62 | 55 | |
| September | 55 | 47 | |
| October | 55 | 57 | |
| November | 64 | 80 | |
| December | 64 | 99 | |



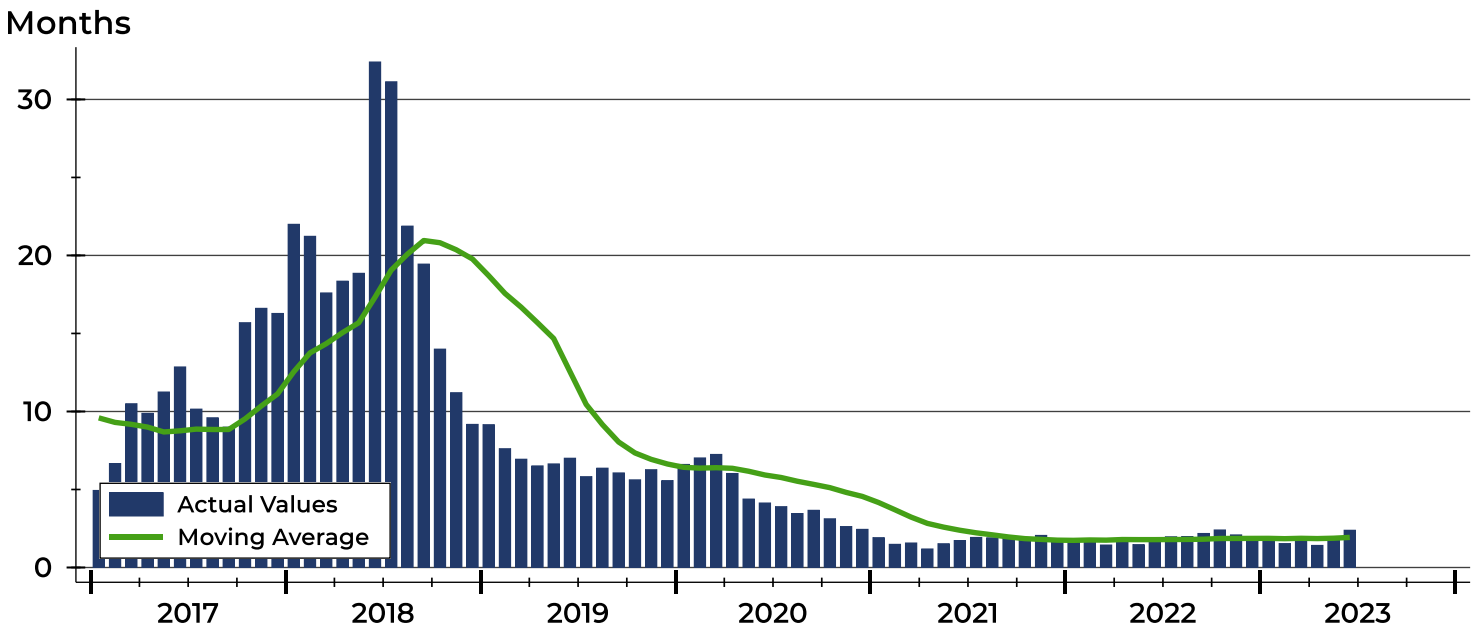
Dickinson County Months' Supply Analysis

Months' Supply by Month



| Month | 2021 | 2022 | 2023 |
|-----------|------|------|------|
| January | 1.9 | 1.8 | 1.8 |
| February | 1.5 | 1.8 | 1.5 |
| March | 1.6 | 1.4 | 1.7 |
| April | 1.2 | 1.6 | 1.4 |
| May | 1.5 | 1.5 | 1.8 |
| June | 1.7 | 1.7 | 2.4 |
| July | 1.9 | 2.0 | |
| August | 1.9 | 2.0 | |
| September | 2.0 | 2.2 | |
| October | 1.9 | 2.4 | |
| November | 2.1 | 2.1 | |
| December | 1.8 | 1.9 | |

History of Month's Supply





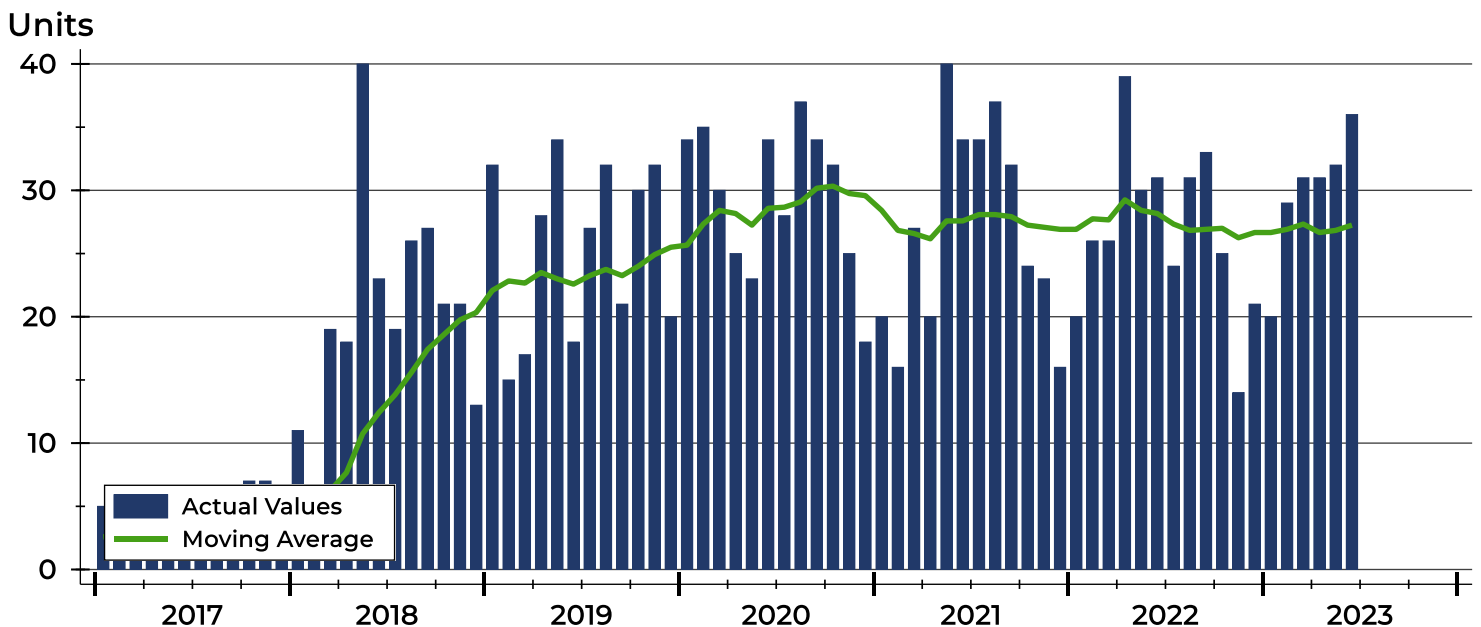
Dickinson County New Listings Analysis

| Summary Statistics for New Listings | | 2023 | June 2022 | Change |
|-------------------------------------|--------------------|----------------|-----------|--------|
| Current Month | New Listings | 36 | 31 | 16.1% |
| | Volume (1,000s) | 6,148 | 5,290 | 16.2% |
| | Average List Price | 170,786 | 170,642 | 0.1% |
| | Median List Price | 159,750 | 142,900 | 11.8% |
| Year-to-Date | New Listings | 179 | 172 | 4.1% |
| | Volume (1,000s) | 30,700 | 26,318 | 16.7% |
| | Average List Price | 171,511 | 153,013 | 12.1% |
| | Median List Price | 155,000 | 139,950 | 10.8% |

A total of 36 new listings were added in Dickinson County during June, up 16.1% from the same month in 2022. Year-to-date Dickinson County has seen 179 new listings.

The median list price of these homes was \$159,750 up from \$142,900 in 2022.

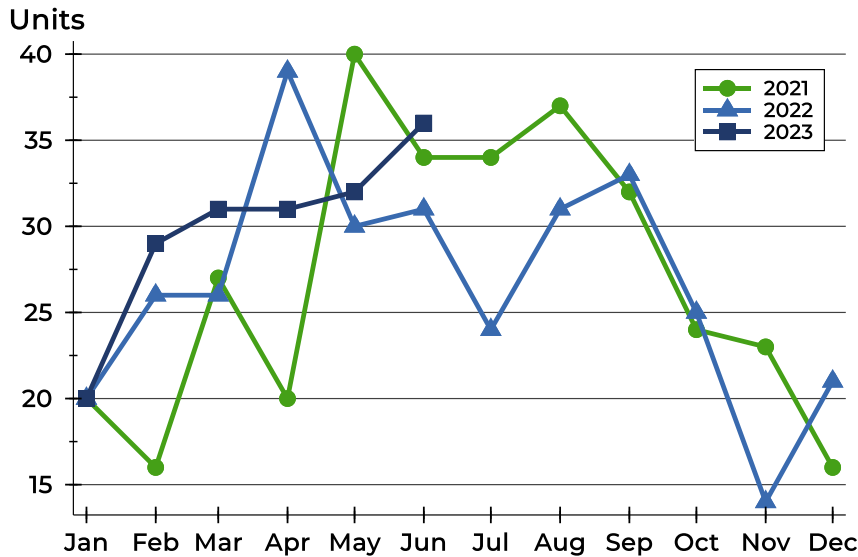
History of New Listings





Dickinson County New Listings Analysis

New Listings by Month



| Month | 2021 | 2022 | 2023 |
|-----------|------|------|-----------|
| January | 20 | 20 | 20 |
| February | 16 | 26 | 29 |
| March | 27 | 26 | 31 |
| April | 20 | 39 | 31 |
| May | 40 | 30 | 32 |
| June | 34 | 31 | 36 |
| July | 34 | 24 | |
| August | 37 | 31 | |
| September | 32 | 33 | |
| October | 24 | 25 | |
| November | 23 | 14 | |
| December | 16 | 21 | |

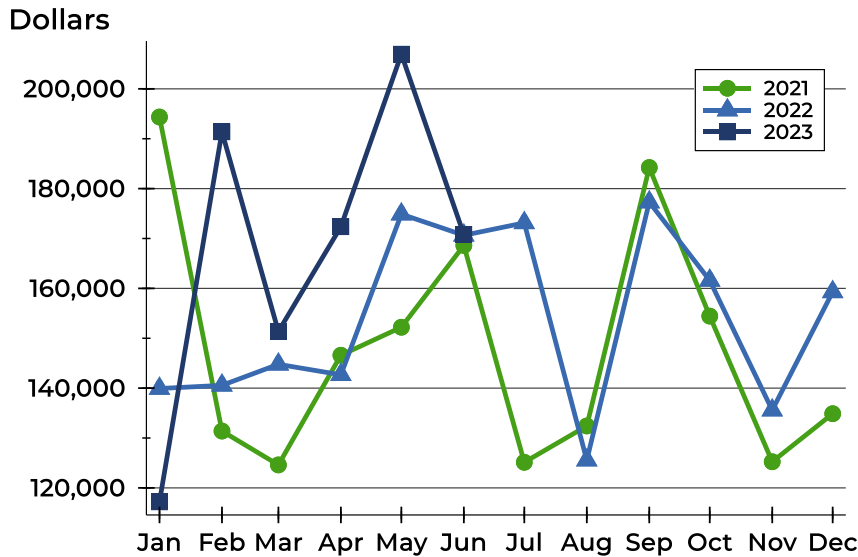
New Listings by Price Range

| Price Range | New Listings | | List Price | | Days on Market | | Price as % of Orig. | |
|---------------------|--------------|---------|------------|---------|----------------|------|---------------------|--------|
| | Number | Percent | Average | Median | Avg. | Med. | Avg. | Med. |
| Below \$25,000 | 1 | 2.8% | 15,000 | 15,000 | 5 | 5 | 100.0% | 100.0% |
| \$25,000-\$49,999 | 1 | 2.8% | 39,000 | 39,000 | 31 | 31 | 100.0% | 100.0% |
| \$50,000-\$99,999 | 5 | 13.9% | 79,560 | 72,900 | 22 | 20 | 97.3% | 100.0% |
| \$100,000-\$124,999 | 2 | 5.6% | 107,000 | 107,000 | 4 | 4 | 100.0% | 100.0% |
| \$125,000-\$149,999 | 5 | 13.9% | 137,860 | 139,900 | 12 | 10 | 98.9% | 100.0% |
| \$150,000-\$174,999 | 7 | 19.4% | 158,429 | 159,500 | 12 | 13 | 100.0% | 100.0% |
| \$175,000-\$199,999 | 3 | 8.3% | 188,267 | 185,000 | 18 | 19 | 97.5% | 97.3% |
| \$200,000-\$249,999 | 5 | 13.9% | 233,200 | 235,000 | 15 | 14 | 98.8% | 100.0% |
| \$250,000-\$299,999 | 6 | 16.7% | 265,733 | 265,000 | 13 | 14 | 99.2% | 100.0% |
| \$300,000-\$399,999 | 1 | 2.8% | 359,000 | 359,000 | 13 | 13 | 100.0% | 100.0% |
| \$400,000-\$499,999 | 0 | 0.0% | N/A | N/A | N/A | N/A | N/A | N/A |
| \$500,000-\$749,999 | 0 | 0.0% | N/A | N/A | N/A | N/A | N/A | N/A |
| \$750,000-\$999,999 | 0 | 0.0% | N/A | N/A | N/A | N/A | N/A | N/A |
| \$1,000,000 and up | 0 | 0.0% | N/A | N/A | N/A | N/A | N/A | N/A |



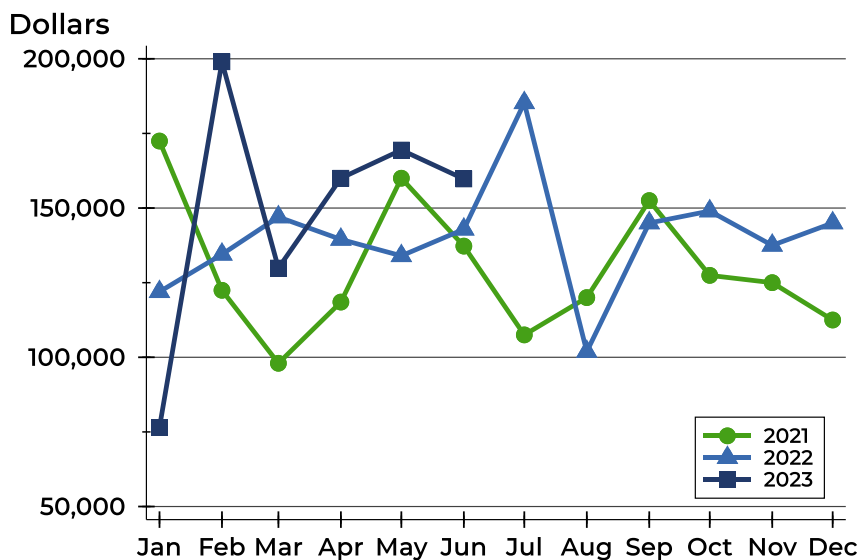
Dickinson County New Listings Analysis

Average Price



| Month | 2021 | 2022 | 2023 |
|------------------|---------|---------|----------------|
| January | 194,360 | 139,930 | 117,200 |
| February | 131,400 | 140,562 | 191,381 |
| March | 124,611 | 144,777 | 151,364 |
| April | 146,600 | 142,685 | 172,358 |
| May | 152,215 | 174,877 | 206,959 |
| June | 168,606 | 170,642 | 170,786 |
| July | 125,135 | 173,133 | |
| August | 132,422 | 125,564 | |
| September | 184,231 | 177,291 | |
| October | 154,442 | 161,596 | |
| November | 125,243 | 135,586 | |
| December | 134,875 | 159,295 | |

Median Price



| Month | 2021 | 2022 | 2023 |
|------------------|---------|---------|----------------|
| January | 172,450 | 121,950 | 76,500 |
| February | 122,450 | 134,500 | 199,000 |
| March | 98,000 | 147,000 | 129,900 |
| April | 118,500 | 139,500 | 160,000 |
| May | 160,000 | 134,000 | 169,450 |
| June | 137,250 | 142,900 | 159,750 |
| July | 107,500 | 185,250 | |
| August | 120,000 | 101,900 | |
| September | 152,500 | 145,000 | |
| October | 127,450 | 149,000 | |
| November | 125,000 | 137,500 | |
| December | 112,500 | 145,000 | |



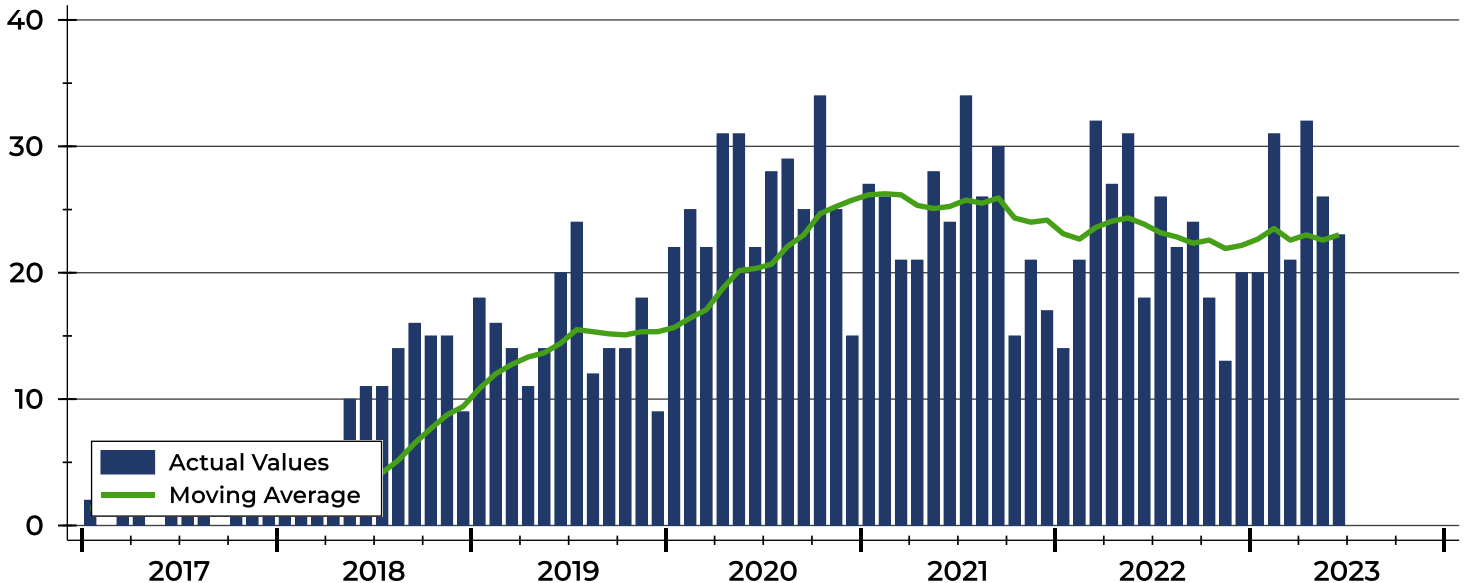
Dickinson County Contracts Written Analysis

| Summary Statistics for Contracts Written | | 2023 | June 2022 | Change | Year-to-Date | | |
|--|---------------------|---------|-----------|--------|--------------|---------|--------|
| | | 2023 | 2022 | | 2023 | 2022 | Change |
| Contracts Written | | 23 | 18 | 27.8% | 153 | 143 | 7.0% |
| Volume (1,000s) | | 4,025 | 3,031 | 32.8% | 24,271 | 22,215 | 9.3% |
| Average | Sale Price | 174,983 | 168,367 | 3.9% | 158,631 | 155,350 | 2.1% |
| | Days on Market | 44 | 25 | 76.0% | 40 | 39 | 2.6% |
| | Percent of Original | 97.2% | 94.5% | 2.9% | 93.5% | 93.7% | -0.2% |
| Median | Sale Price | 174,000 | 126,700 | 37.3% | 140,000 | 139,900 | 0.1% |
| | Days on Market | 17 | 12 | 41.7% | 11 | 17 | -35.3% |
| | Percent of Original | 100.0% | 95.9% | 4.3% | 96.4% | 96.9% | -0.5% |

A total of 23 contracts for sale were written in Dickinson County during the month of June, up from 18 in 2022. The median list price of these homes was \$174,000, up from \$126,700 the prior year. Half of the homes that went under contract in June were on the market less than 17 days, compared to 12 days in June 2022.

History of Contracts Written

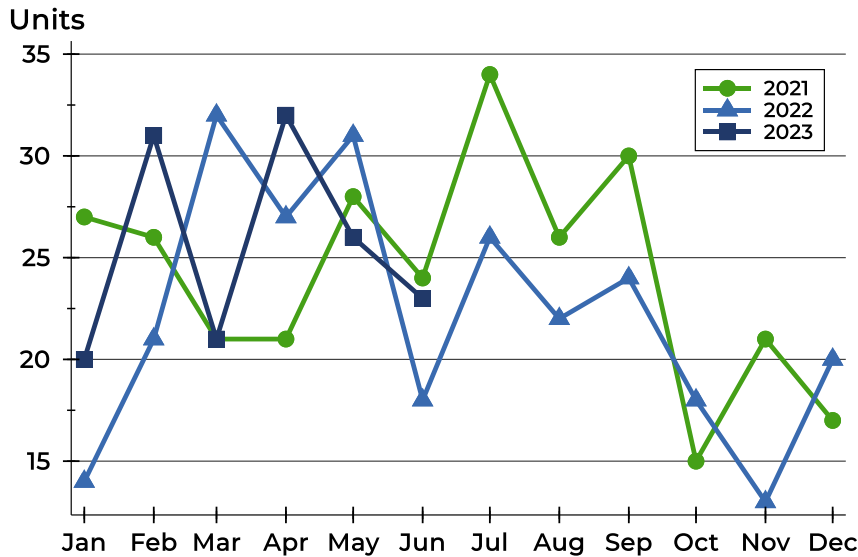
Units





Dickinson County Contracts Written Analysis

Contracts Written by Month



| Month | 2021 | 2022 | 2023 |
|-----------|------|------|------|
| January | 27 | 14 | 20 |
| February | 26 | 21 | 31 |
| March | 21 | 32 | 21 |
| April | 21 | 27 | 32 |
| May | 28 | 31 | 26 |
| June | 24 | 18 | 23 |
| July | 34 | 26 | |
| August | 26 | 22 | |
| September | 30 | 24 | |
| October | 15 | 18 | |
| November | 21 | 13 | |
| December | 17 | 20 | |

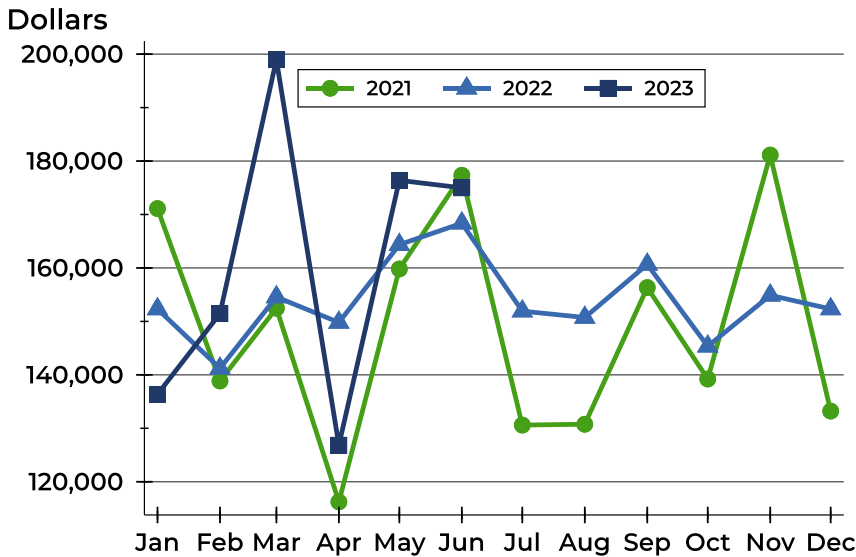
Contracts Written by Price Range

| Price Range | Contracts Written | | List Price | | Days on Market | | Price as % of Orig. | |
|---------------------|-------------------|---------|------------|---------|----------------|------|---------------------|--------|
| | Number | Percent | Average | Median | Avg. | Med. | Avg. | Med. |
| Below \$25,000 | 2 | 8.7% | 17,450 | 17,450 | 23 | 23 | 100.0% | 100.0% |
| \$25,000-\$49,999 | 0 | 0.0% | N/A | N/A | N/A | N/A | N/A | N/A |
| \$50,000-\$99,999 | 1 | 4.3% | 60,000 | 60,000 | 258 | 258 | 68.8% | 68.8% |
| \$100,000-\$124,999 | 1 | 4.3% | 110,000 | 110,000 | 5 | 5 | 100.0% | 100.0% |
| \$125,000-\$149,999 | 3 | 13.0% | 131,633 | 130,000 | 7 | 1 | 100.0% | 100.0% |
| \$150,000-\$174,999 | 5 | 21.7% | 161,600 | 159,500 | 21 | 5 | 98.4% | 100.0% |
| \$175,000-\$199,999 | 4 | 17.4% | 185,850 | 182,450 | 50 | 27 | 97.5% | 98.6% |
| \$200,000-\$249,999 | 2 | 8.7% | 225,000 | 225,000 | 49 | 49 | 96.8% | 96.8% |
| \$250,000-\$299,999 | 4 | 17.4% | 273,600 | 274,450 | 61 | 17 | 98.1% | 98.1% |
| \$300,000-\$399,999 | 1 | 4.3% | 329,000 | 329,000 | 43 | 43 | 100.0% | 100.0% |
| \$400,000-\$499,999 | 0 | 0.0% | N/A | N/A | N/A | N/A | N/A | N/A |
| \$500,000-\$749,999 | 0 | 0.0% | N/A | N/A | N/A | N/A | N/A | N/A |
| \$750,000-\$999,999 | 0 | 0.0% | N/A | N/A | N/A | N/A | N/A | N/A |
| \$1,000,000 and up | 0 | 0.0% | N/A | N/A | N/A | N/A | N/A | N/A |



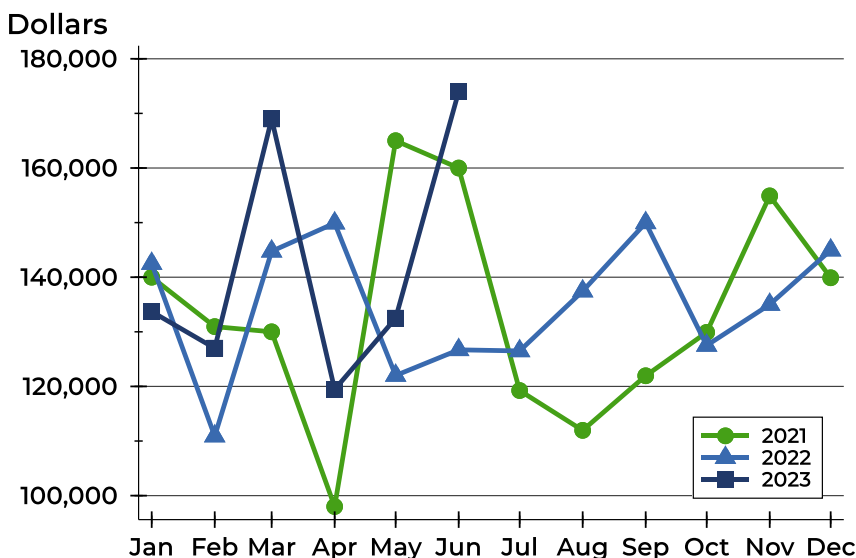
Dickinson County Contracts Written Analysis

Average Price



| Month | 2021 | 2022 | 2023 |
|------------------|---------|---------|----------------|
| January | 171,111 | 152,321 | 136,365 |
| February | 138,862 | 141,229 | 151,456 |
| March | 152,467 | 154,572 | 198,957 |
| April | 116,238 | 149,811 | 126,844 |
| May | 159,808 | 164,355 | 176,400 |
| June | 177,346 | 168,367 | 174,983 |
| July | 130,606 | 151,919 | |
| August | 130,765 | 150,736 | |
| September | 156,333 | 160,662 | |
| October | 139,227 | 145,350 | |
| November | 181,124 | 154,877 | |
| December | 133,224 | 152,330 | |

Median Price

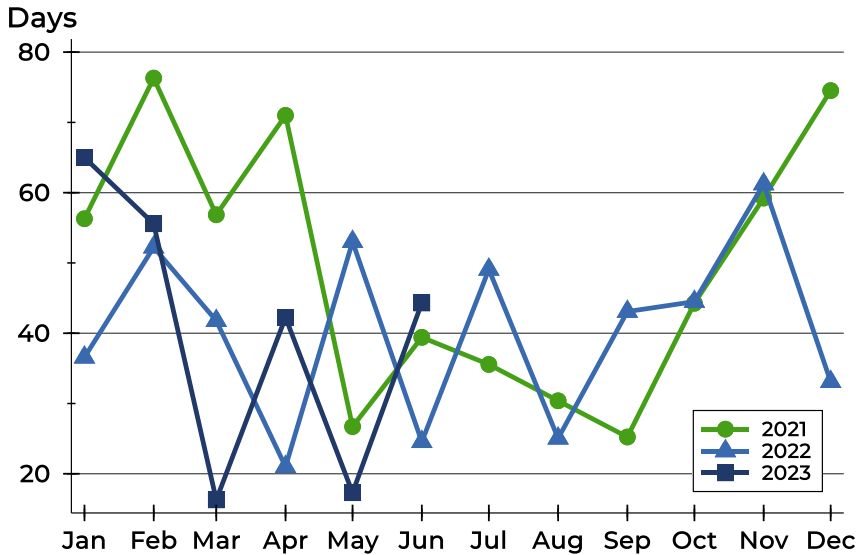


| Month | 2021 | 2022 | 2023 |
|------------------|---------|---------|----------------|
| January | 140,000 | 142,500 | 133,700 |
| February | 130,950 | 110,900 | 127,000 |
| March | 130,000 | 144,750 | 169,000 |
| April | 98,000 | 149,900 | 119,450 |
| May | 165,000 | 122,000 | 132,500 |
| June | 160,000 | 126,700 | 174,000 |
| July | 119,250 | 126,500 | |
| August | 111,950 | 137,450 | |
| September | 121,950 | 149,950 | |
| October | 129,900 | 127,500 | |
| November | 154,900 | 135,000 | |
| December | 139,900 | 144,950 | |



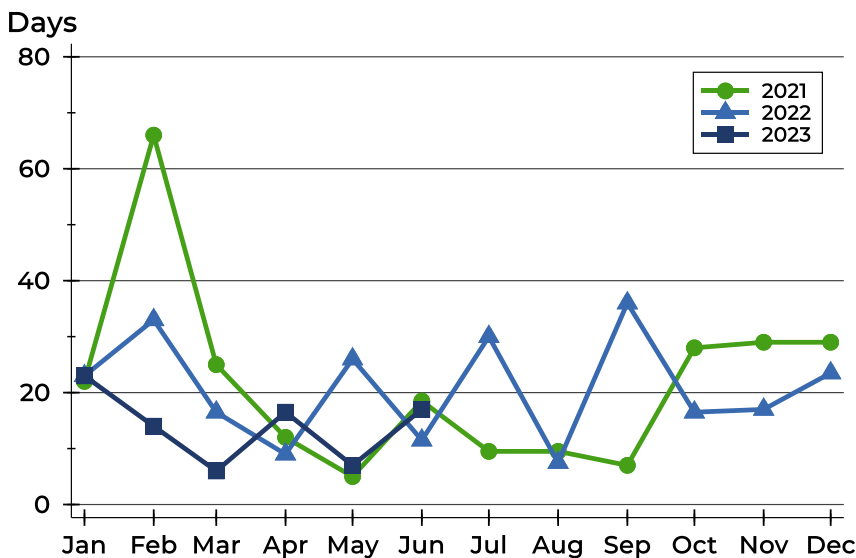
Dickinson County Contracts Written Analysis

Average DOM



| Month | 2021 | 2022 | 2023 |
|-----------|------|------|-----------|
| January | 56 | 37 | 65 |
| February | 76 | 52 | 56 |
| March | 57 | 42 | 16 |
| April | 71 | 21 | 42 |
| May | 27 | 53 | 17 |
| June | 39 | 25 | 44 |
| July | 36 | 49 | |
| August | 30 | 25 | |
| September | 25 | 43 | |
| October | 44 | 45 | |
| November | 59 | 61 | |
| December | 75 | 33 | |

Median DOM



| Month | 2021 | 2022 | 2023 |
|-----------|------|------|-----------|
| January | 22 | 23 | 23 |
| February | 66 | 33 | 14 |
| March | 25 | 17 | 6 |
| April | 12 | 9 | 17 |
| May | 5 | 26 | 7 |
| June | 19 | 12 | 17 |
| July | 10 | 30 | |
| August | 10 | 8 | |
| September | 7 | 36 | |
| October | 28 | 17 | |
| November | 29 | 17 | |
| December | 29 | 24 | |



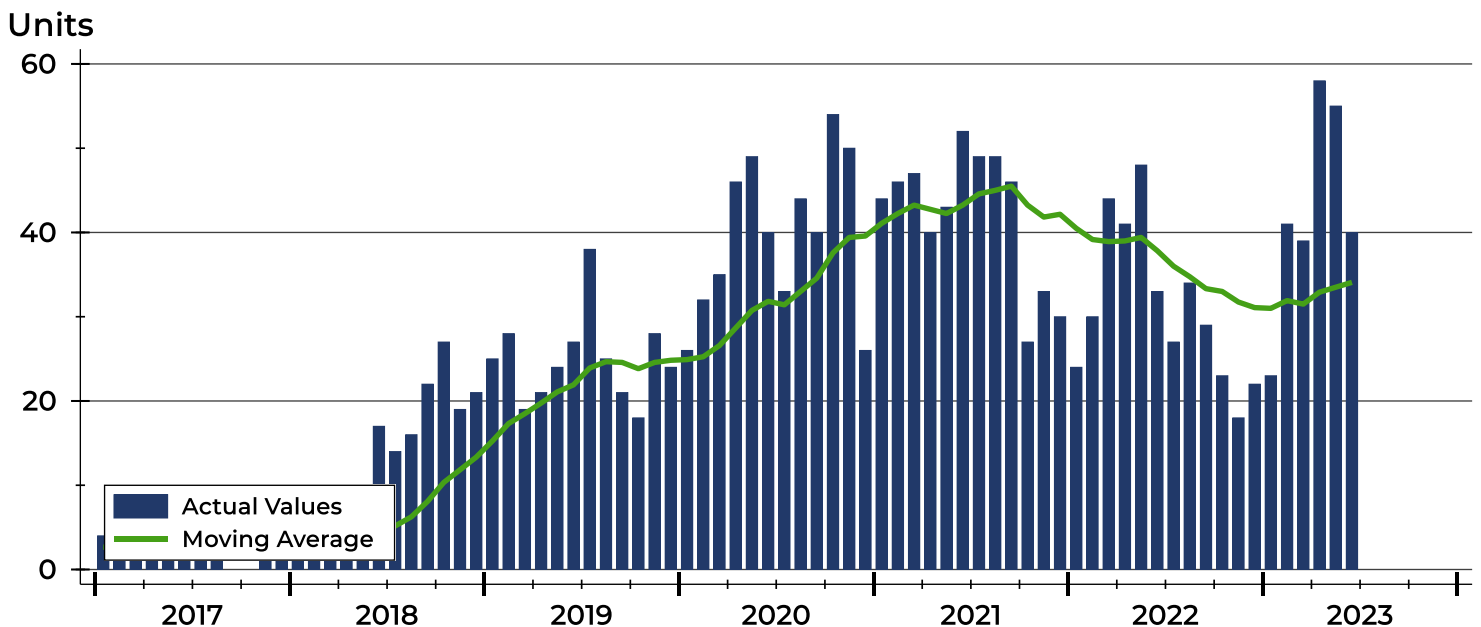
Dickinson County Pending Contracts Analysis

| Summary Statistics for Pending Contracts | | 2023 | End of June 2022 | Change |
|--|---------------------|---------|------------------|--------|
| Pending Contracts | | 40 | 33 | 21.2% |
| Volume (1,000s) | | 7,439 | 6,433 | 15.6% |
| Average | List Price | 185,985 | 194,939 | -4.6% |
| | Days on Market | 32 | 49 | -34.7% |
| | Percent of Original | 98.3% | 95.8% | 2.6% |
| Median | List Price | 162,500 | 128,500 | 26.5% |
| | Days on Market | 9 | 17 | -47.1% |
| | Percent of Original | 100.0% | 100.0% | 0.0% |

A total of 40 listings in Dickinson County had contracts pending at the end of June, up from 33 contracts pending at the end of June 2022.

Pending contracts reflect listings with a contract in place at the end of the month. In contrast, contracts written measures the number of listings put under contract during the month.

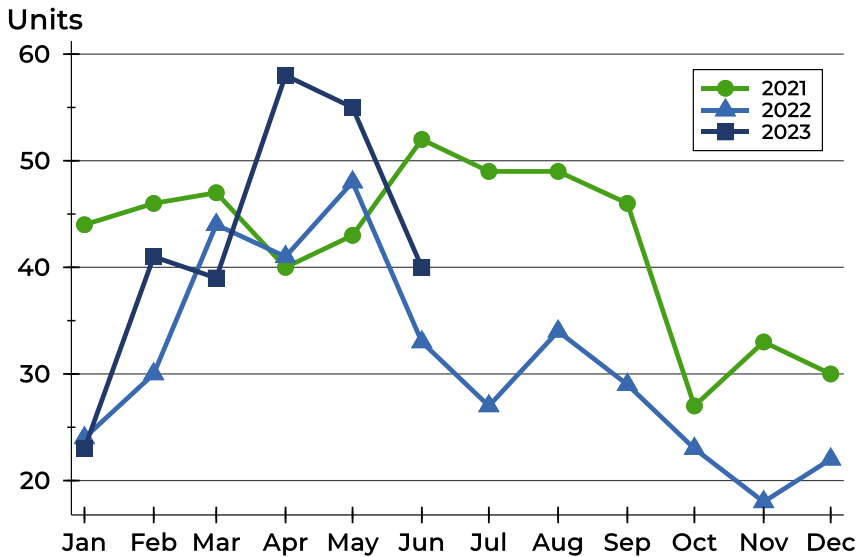
History of Pending Contracts





Dickinson County Pending Contracts Analysis

Pending Contracts by Month



| Month | 2021 | 2022 | 2023 |
|-----------|------|------|-----------|
| January | 44 | 24 | 23 |
| February | 46 | 30 | 41 |
| March | 47 | 44 | 39 |
| April | 40 | 41 | 58 |
| May | 43 | 48 | 55 |
| June | 52 | 33 | 40 |
| July | 49 | 27 | |
| August | 49 | 34 | |
| September | 46 | 29 | |
| October | 27 | 23 | |
| November | 33 | 18 | |
| December | 30 | 22 | |

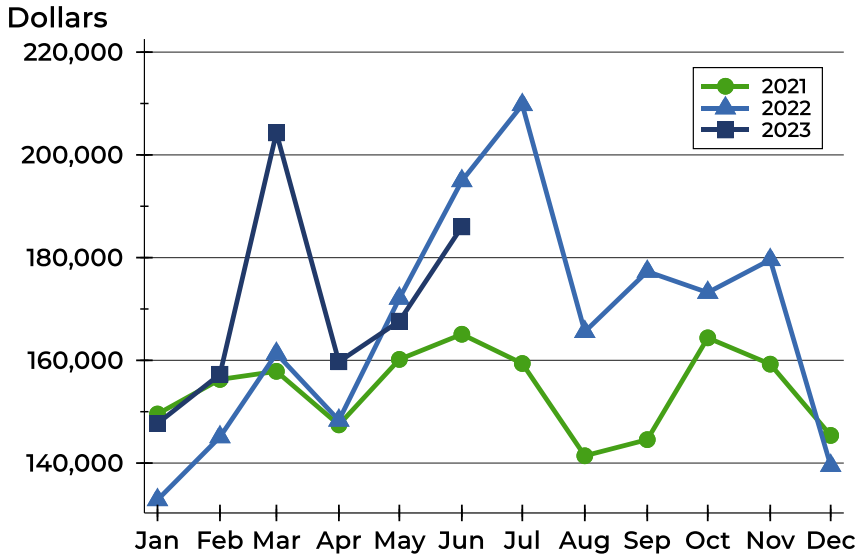
Pending Contracts by Price Range

| Price Range | Pending Contracts | | List Price | | Days on Market | | Price as % of Orig. | |
|---------------------|-------------------|---------|------------|---------|----------------|------|---------------------|--------|
| | Number | Percent | Average | Median | Avg. | Med. | Avg. | Med. |
| Below \$25,000 | 2 | 5.0% | 17,450 | 17,450 | 23 | 23 | 100.0% | 100.0% |
| \$25,000-\$49,999 | 2 | 5.0% | 47,450 | 47,450 | 27 | 27 | 95.4% | 95.4% |
| \$50,000-\$99,999 | 4 | 10.0% | 67,500 | 62,500 | 75 | 20 | 93.8% | 100.0% |
| \$100,000-\$124,999 | 2 | 5.0% | 115,000 | 115,000 | 9 | 9 | 100.0% | 100.0% |
| \$125,000-\$149,999 | 5 | 12.5% | 129,980 | 130,000 | 11 | 5 | 100.0% | 100.0% |
| \$150,000-\$174,999 | 7 | 17.5% | 161,843 | 159,900 | 15 | 3 | 98.9% | 100.0% |
| \$175,000-\$199,999 | 5 | 12.5% | 185,680 | 185,000 | 40 | 19 | 98.0% | 100.0% |
| \$200,000-\$249,999 | 2 | 5.0% | 225,000 | 225,000 | 49 | 49 | 96.8% | 96.8% |
| \$250,000-\$299,999 | 5 | 12.5% | 283,880 | 285,000 | 49 | 8 | 100.0% | 100.0% |
| \$300,000-\$399,999 | 4 | 10.0% | 332,250 | 329,500 | 17 | 12 | 100.0% | 100.0% |
| \$400,000-\$499,999 | 2 | 5.0% | 450,000 | 450,000 | 49 | 49 | 94.4% | 94.4% |
| \$500,000-\$749,999 | 0 | 0.0% | N/A | N/A | N/A | N/A | N/A | N/A |
| \$750,000-\$999,999 | 0 | 0.0% | N/A | N/A | N/A | N/A | N/A | N/A |
| \$1,000,000 and up | 0 | 0.0% | N/A | N/A | N/A | N/A | N/A | N/A |



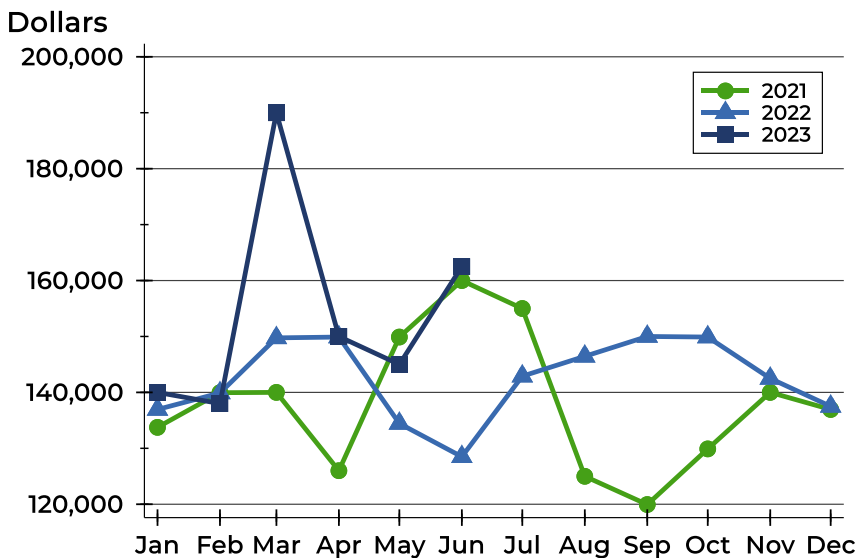
Dickinson County Pending Contracts Analysis

Average Price



| Month | 2021 | 2022 | 2023 |
|-----------|---------|---------|----------------|
| January | 149,555 | 132,838 | 147,700 |
| February | 156,285 | 145,083 | 157,289 |
| March | 157,860 | 161,327 | 204,292 |
| April | 147,443 | 148,317 | 159,728 |
| May | 160,184 | 172,054 | 167,627 |
| June | 165,081 | 194,939 | 185,985 |
| July | 159,388 | 209,752 | |
| August | 141,420 | 165,571 | |
| September | 144,565 | 177,297 | |
| October | 164,385 | 173,196 | |
| November | 159,261 | 179,578 | |
| December | 145,383 | 139,505 | |

Median Price

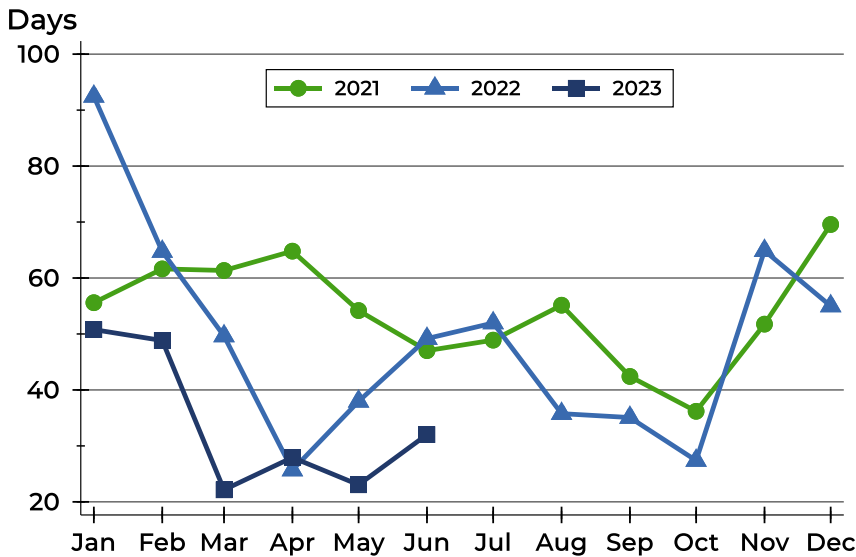


| Month | 2021 | 2022 | 2023 |
|-----------|---------|---------|----------------|
| January | 133,750 | 136,950 | 140,000 |
| February | 139,950 | 139,900 | 138,000 |
| March | 140,000 | 149,750 | 190,000 |
| April | 126,000 | 149,900 | 150,000 |
| May | 149,900 | 134,450 | 145,000 |
| June | 160,000 | 128,500 | 162,500 |
| July | 155,000 | 142,900 | |
| August | 125,000 | 146,450 | |
| September | 119,950 | 150,000 | |
| October | 129,900 | 149,900 | |
| November | 140,000 | 142,500 | |
| December | 136,950 | 137,500 | |



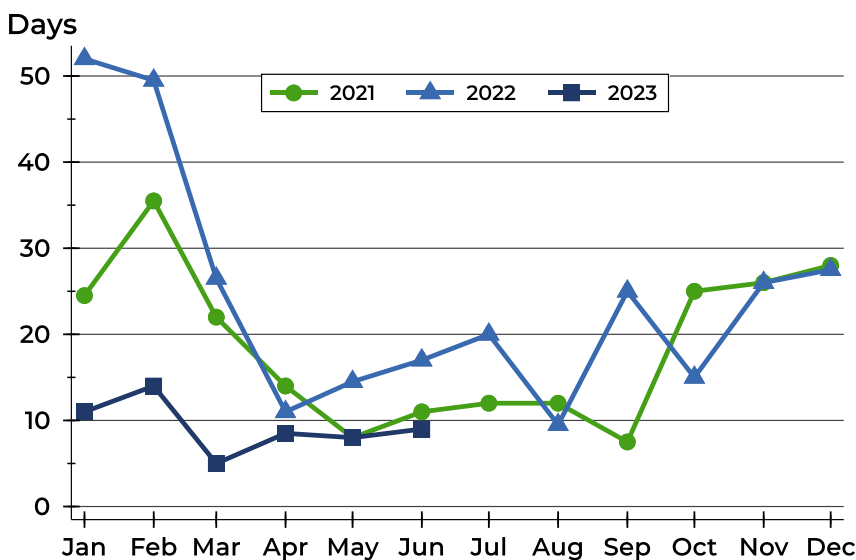
Dickinson County Pending Contracts Analysis

Average DOM



| Month | 2021 | 2022 | 2023 |
|-----------|------|------|------|
| January | 56 | 92 | 51 |
| February | 62 | 65 | 49 |
| March | 61 | 50 | 22 |
| April | 65 | 26 | 28 |
| May | 54 | 38 | 23 |
| June | 47 | 49 | 32 |
| July | 49 | 52 | |
| August | 55 | 36 | |
| September | 42 | 35 | |
| October | 36 | 27 | |
| November | 52 | 65 | |
| December | 70 | 55 | |

Median DOM



| Month | 2021 | 2022 | 2023 |
|-----------|------|------|------|
| January | 25 | 52 | 11 |
| February | 36 | 50 | 14 |
| March | 22 | 27 | 5 |
| April | 14 | 11 | 9 |
| May | 8 | 15 | 8 |
| June | 11 | 17 | 9 |
| July | 12 | 20 | |
| August | 12 | 10 | |
| September | 8 | 25 | |
| October | 25 | 15 | |
| November | 26 | 26 | |
| December | 28 | 28 | |