



## Geary County Housing Report



### Market Overview

#### Geary County Home Sales Fell in January

Total home sales in Geary County fell last month to 24 units, compared to 47 units in January 2022. Total sales volume was \$4.2 million, down from a year earlier.

The median sale price in January was \$140,500, down from \$181,000 a year earlier. Homes that sold in January were typically on the market for 43 days and sold for 96.4% of their list prices.

#### Geary County Active Listings Up at End of January

The total number of active listings in Geary County at the end of January was 100 units, up from 70 at the same point in 2022. This represents a 2.0 months' supply of homes available for sale. The median list price of homes on the market at the end of January was \$189,500.

During January, a total of 57 contracts were written up from 45 in January 2022. At the end of the month, there were 74 contracts still pending.

### Report Contents

- Summary Statistics – Page 2
- Closed Listing Analysis – Page 3
- Active Listings Analysis – Page 7
- Months' Supply Analysis – Page 11
- New Listings Analysis – Page 12
- Contracts Written Analysis – Page 15
- Pending Contracts Analysis – Page 19

### Contact Information

Margaret Pendleton, Association Executive  
 Flint Hills Association of REALTORS®  
 205 S. Seth Child Road  
 Manhattan, KS 66502  
 785-776-1203  
[ae@flinthillsrealtors.net](mailto:ae@flinthillsrealtors.net)  
[www.flinthillsrealtors.net](http://www.flinthillsrealtors.net)



## Geary County Summary Statistics

| January MLS Statistics<br>Three-year History |                              | Current Month  |                |                | Year-to-Date   |                |                |
|--|------------------------------|----------------|----------------|----------------|----------------|----------------|----------------|
|  |                              | 2023           | 2022           | 2021           | 2023           | 2022           | 2021           |
| <b>Home Sales</b>                            |                              | <b>24</b>      | <b>47</b>      | <b>41</b>      | <b>24</b>      | <b>47</b>      | <b>41</b>      |
| Change from prior year                       |                              | -48.9%         | 14.6%          | 41.4%          | -48.9%         | 14.6%          | 41.4%          |
| <b>Active Listings</b>                       |                              | <b>100</b>     | <b>70</b>      | <b>93</b>      | <b>N/A</b>     | <b>N/A</b>     | <b>N/A</b>     |
| Change from prior year                       |                              | 42.9%          | -24.7%         | -49.2%         |                |                |                |
| <b>Months' Supply</b>                        |                              | <b>2.0</b>     | <b>1.2</b>     | <b>1.9</b>     | <b>N/A</b>     | <b>N/A</b>     | <b>N/A</b>     |
| Change from prior year                       |                              | 66.7%          | -36.8%         | -63.5%         |                |                |                |
| <b>New Listings</b>                          |                              | <b>42</b>      | <b>37</b>      | <b>43</b>      | <b>42</b>      | <b>37</b>      | <b>43</b>      |
| Change from prior year                       |                              | 13.5%          | -14.0%         | -31.7%         | 13.5%          | -14.0%         | -31.7%         |
| <b>Contracts Written</b>                     |                              | <b>57</b>      | <b>45</b>      | <b>45</b>      | <b>57</b>      | <b>45</b>      | <b>45</b>      |
| Change from prior year                       |                              | 26.7%          | 0.0%           | 18.4%          | 26.7%          | 0.0%           | 18.4%          |
| <b>Pending Contracts</b>                     |                              | <b>74</b>      | <b>80</b>      | <b>79</b>      | <b>N/A</b>     | <b>N/A</b>     | <b>N/A</b>     |
| Change from prior year                       |                              | -7.5%          | 1.3%           | 29.5%          |                |                |                |
| <b>Sales Volume (1,000s)</b>                 |                              | <b>4,200</b>   | <b>8,285</b>   | <b>6,387</b>   | <b>4,200</b>   | <b>8,285</b>   | <b>6,387</b>   |
| Change from prior year                       |                              | -49.3%         | 29.7%          | 62.4%          | -49.3%         | 29.7%          | 62.4%          |
| <b>Average</b>                               | <b>Sale Price</b>            | <b>174,987</b> | <b>176,283</b> | <b>155,771</b> | <b>174,987</b> | <b>176,283</b> | <b>155,771</b> |
|  | Change from prior year       | -0.7%          | 13.2%          | 14.9%          | -0.7%          | 13.2%          | 14.9%          |
|  | <b>List Price of Actives</b> | <b>185,842</b> | <b>161,751</b> | <b>136,974</b> | <b>N/A</b>     | <b>N/A</b>     | <b>N/A</b>     |
|  | Change from prior year       | 14.9%          | 18.1%          | -7.6%          |                |                |                |
|  | <b>Days on Market</b>        | <b>53</b>      | <b>46</b>      | <b>67</b>      | <b>53</b>      | <b>46</b>      | <b>67</b>      |
| Change from prior year                       | 15.2%                        | -31.3%         | -42.2%         | 15.2%          | -31.3%         | -42.2%         |                |
| <b>Percent of List</b>                       | <b>93.8%</b>                 | <b>97.0%</b>   | <b>96.2%</b>   | <b>93.8%</b>   | <b>97.0%</b>   | <b>96.2%</b>   |                |
| Change from prior year                       | -3.3%                        | 0.8%           | -1.6%          | -3.3%          | 0.8%           | -1.6%          |                |
| <b>Percent of Original</b>                   | <b>90.7%</b>                 | <b>95.3%</b>   | <b>95.0%</b>   | <b>90.7%</b>   | <b>95.3%</b>   | <b>95.0%</b>   |                |
| Change from prior year                       | -4.8%                        | 0.3%           | 0.1%           | -4.8%          | 0.3%           | 0.1%           |                |
| <b>Median</b>                                | <b>Sale Price</b>            | <b>140,500</b> | <b>181,000</b> | <b>148,000</b> | <b>140,500</b> | <b>181,000</b> | <b>148,000</b> |
|  | Change from prior year       | -22.4%         | 22.3%          | 2.1%           | -22.4%         | 22.3%          | 2.1%           |
|  | <b>List Price of Actives</b> | <b>189,500</b> | <b>131,250</b> | <b>125,000</b> | <b>N/A</b>     | <b>N/A</b>     | <b>N/A</b>     |
|  | Change from prior year       | 44.4%          | 5.0%           | 0.0%           |                |                |                |
|  | <b>Days on Market</b>        | <b>43</b>      | <b>26</b>      | <b>39</b>      | <b>43</b>      | <b>26</b>      | <b>39</b>      |
| Change from prior year                       | 65.4%                        | -33.3%         | -53.0%         | 65.4%          | -33.3%         | -53.0%         |                |
| <b>Percent of List</b>                       | <b>96.4%</b>                 | <b>100.0%</b>  | <b>99.1%</b>   | <b>96.4%</b>   | <b>100.0%</b>  | <b>99.1%</b>   |                |
| Change from prior year                       | -3.6%                        | 0.9%           | -0.1%          | -3.6%          | 0.9%           | -0.1%          |                |
| <b>Percent of Original</b>                   | <b>93.3%</b>                 | <b>97.4%</b>   | <b>98.9%</b>   | <b>93.3%</b>   | <b>97.4%</b>   | <b>98.9%</b>   |                |
| Change from prior year                       | -4.2%                        | -1.5%          | 2.4%           | -4.2%          | -1.5%          | 2.4%           |                |

Note: Year-to-date statistics cannot be calculated for Active Listings, Months' Supply and Pending Contracts.



## Geary County Closed Listings Analysis

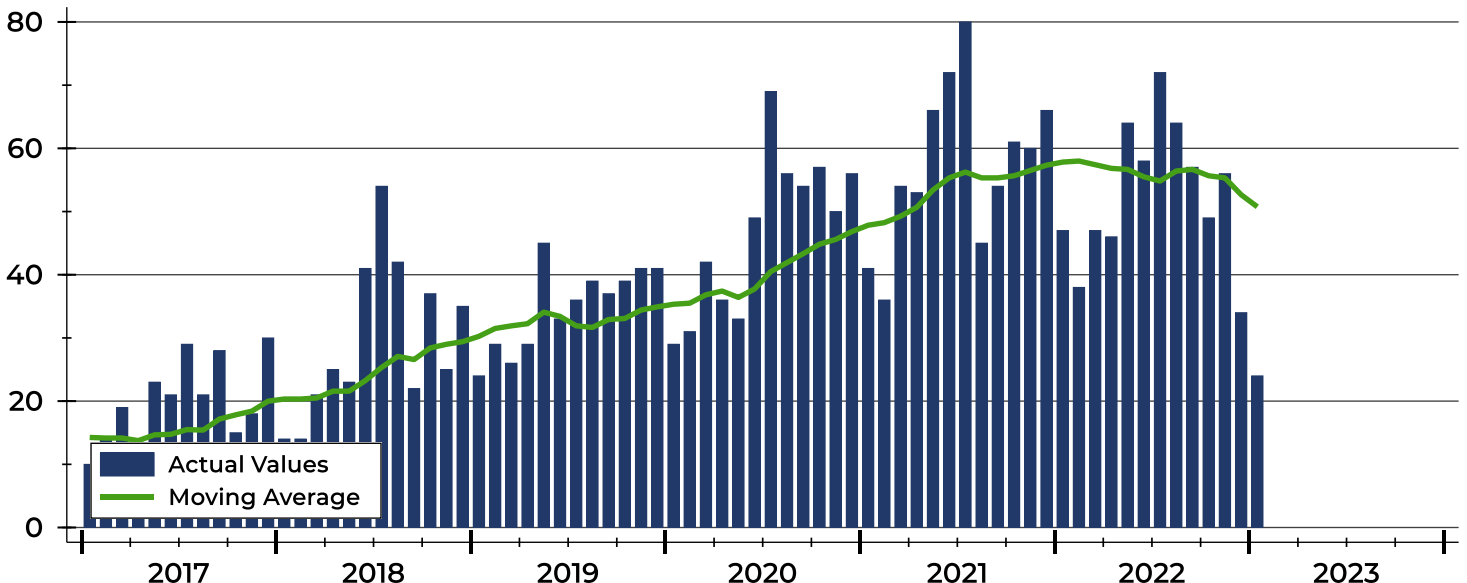
| Summary Statistics for Closed Listings |                     | 2023    | January 2022 | Change | 2023    | Year-to-Date 2022 | Change |
|--|---------------------|---------|--------------|--------|---------|-------------------|--------|
| Closed Listings                        |                     | 24      | 47           | -48.9% | 24      | 47                | -48.9% |
| Volume (1,000s)                        |                     | 4,200   | 8,285        | -49.3% | 4,200   | 8,285             | -49.3% |
| Months' Supply                         |                     | 2.0     | 1.2          | 66.7%  | N/A     | N/A               | N/A    |
| Average                                | Sale Price          | 174,987 | 176,283      | -0.7%  | 174,987 | 176,283           | -0.7%  |
|  | Days on Market      | 53      | 46           | 15.2%  | 53      | 46                | 15.2%  |
|  | Percent of List     | 93.8%   | 97.0%        | -3.3%  | 93.8%   | 97.0%             | -3.3%  |
|  | Percent of Original | 90.7%   | 95.3%        | -4.8%  | 90.7%   | 95.3%             | -4.8%  |
| Median                                 | Sale Price          | 140,500 | 181,000      | -22.4% | 140,500 | 181,000           | -22.4% |
|  | Days on Market      | 43      | 26           | 65.4%  | 43      | 26                | 65.4%  |
|  | Percent of List     | 96.4%   | 100.0%       | -3.6%  | 96.4%   | 100.0%            | -3.6%  |
|  | Percent of Original | 93.3%   | 97.4%        | -4.2%  | 93.3%   | 97.4%             | -4.2%  |

A total of 24 homes sold in Geary County in January, down from 47 units in January 2022. Total sales volume fell to \$4.2 million compared to \$8.3 million in the previous year.

The median sales price in January was \$140,500, down 22.4% compared to the prior year. Median days on market was 43 days, up from 23 days in December, and up from 26 in January 2022.

## History of Closed Listings

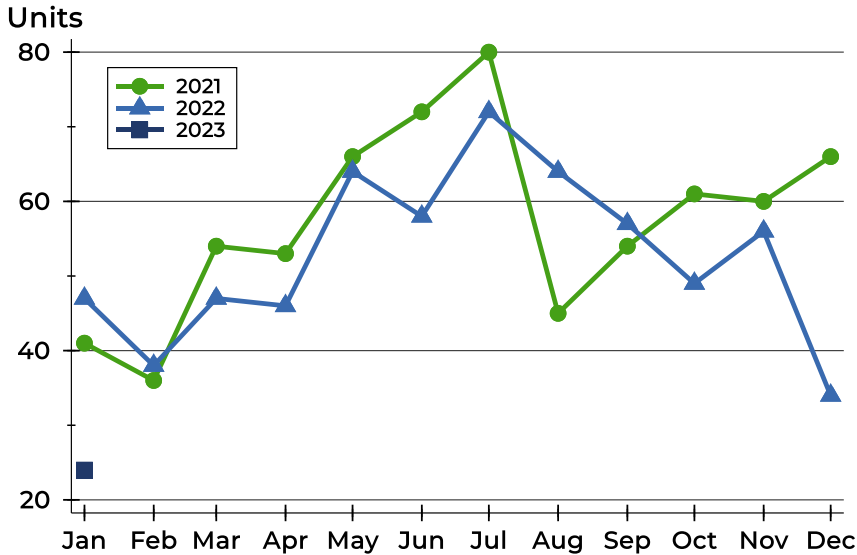
Units





## Geary County Closed Listings Analysis

### Closed Listings by Month



| Month     | 2021 | 2022 | 2023 |
|-----------|------|------|------|
| January   | 41   | 47   | 24   |
| February  | 36   | 38   |      |
| March     | 54   | 47   |      |
| April     | 53   | 46   |      |
| May       | 66   | 64   |      |
| June      | 72   | 58   |      |
| July      | 80   | 72   |      |
| August    | 45   | 64   |      |
| September | 54   | 57   |      |
| October   | 61   | 49   |      |
| November  | 60   | 56   |      |
| December  | 66   | 34   |      |

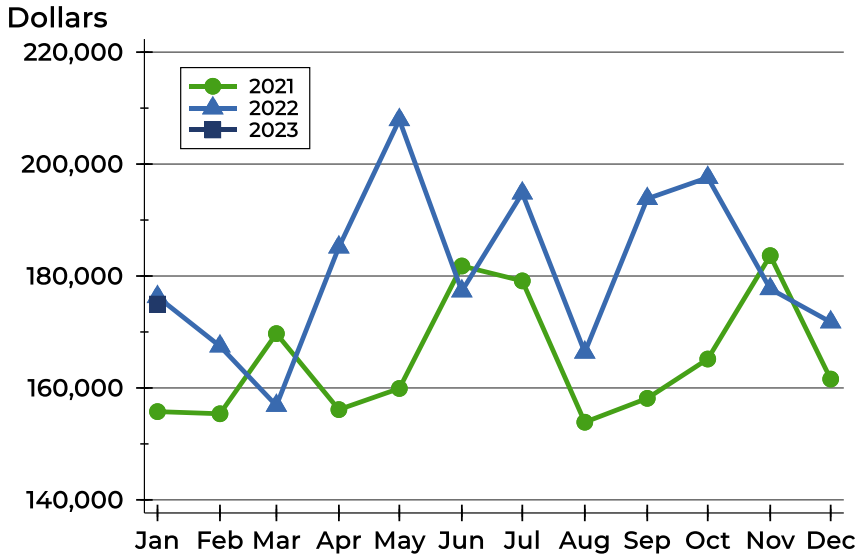
### Closed Listings by Price Range

| Price Range         | Sales  |         | Months' Supply | Sale Price |         | Days on Market |      | Price as % of List |        | Price as % of Orig. |        |
|---------------------|--------|---------|----------------|------------|---------|----------------|------|--------------------|--------|---------------------|--------|
|                     | Number | Percent |                | Average    | Median  | Avg.           | Med. | Avg.               | Med.   | Avg.                | Med.   |
| Below \$25,000      | 0      | 0.0%    | N/A            | N/A        | N/A     | N/A            | N/A  | N/A                | N/A    | N/A                 | N/A    |
| \$25,000-\$49,999   | 3      | 12.5%   | 0.6            | 33,333     | 35,000  | 40             | 23   | 78.0%              | 78.0%  | 70.0%               | 72.7%  |
| \$50,000-\$99,999   | 2      | 8.3%    | 1.9            | 87,500     | 87,500  | 49             | 49   | 82.8%              | 82.8%  | 80.4%               | 80.4%  |
| \$100,000-\$124,999 | 4      | 16.7%   | 1.7            | 118,475    | 119,500 | 36             | 45   | 95.9%              | 95.9%  | 93.4%               | 93.8%  |
| \$125,000-\$149,999 | 4      | 16.7%   | 1.7            | 134,488    | 132,975 | 59             | 26   | 102.6%             | 102.8% | 99.7%               | 100.8% |
| \$150,000-\$174,999 | 0      | 0.0%    | 1.9            | N/A        | N/A     | N/A            | N/A  | N/A                | N/A    | N/A                 | N/A    |
| \$175,000-\$199,999 | 3      | 12.5%   | 2.6            | 187,300    | 182,000 | 20             | 18   | 98.8%              | 100.0% | 97.0%               | 95.8%  |
| \$200,000-\$249,999 | 2      | 8.3%    | 2.7            | 229,950    | 229,950 | 103            | 103  | 92.0%              | 92.0%  | 89.7%               | 89.7%  |
| \$250,000-\$299,999 | 3      | 12.5%   | 1.6            | 262,333    | 260,000 | 81             | 89   | 94.5%              | 96.8%  | 90.5%               | 90.2%  |
| \$300,000-\$399,999 | 3      | 12.5%   | 1.9            | 368,011    | 365,000 | 51             | 68   | 97.9%              | 98.7%  | 97.6%               | 98.7%  |
| \$400,000-\$499,999 | 0      | 0.0%    | N/A            | N/A        | N/A     | N/A            | N/A  | N/A                | N/A    | N/A                 | N/A    |
| \$500,000-\$749,999 | 0      | 0.0%    | N/A            | N/A        | N/A     | N/A            | N/A  | N/A                | N/A    | N/A                 | N/A    |
| \$750,000-\$999,999 | 0      | 0.0%    | N/A            | N/A        | N/A     | N/A            | N/A  | N/A                | N/A    | N/A                 | N/A    |
| \$1,000,000 and up  | 0      | 0.0%    | N/A            | N/A        | N/A     | N/A            | N/A  | N/A                | N/A    | N/A                 | N/A    |



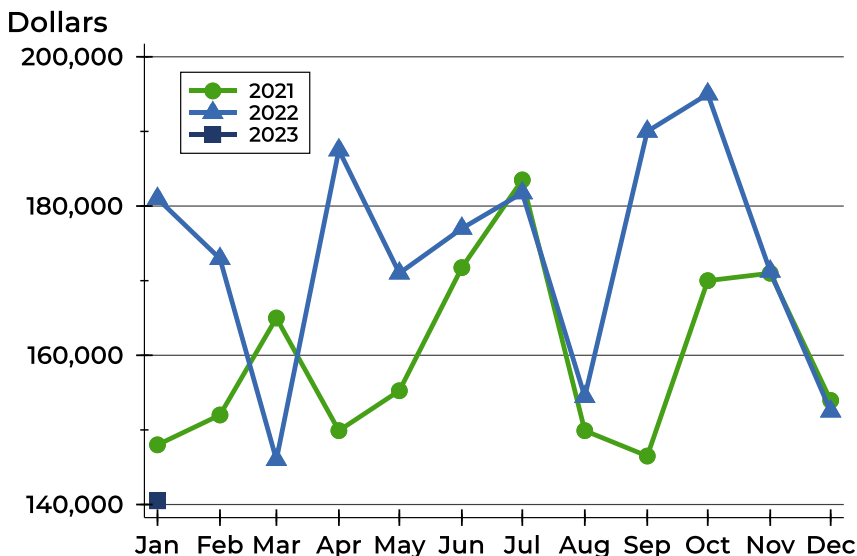
## Geary County Closed Listings Analysis

### Average Price



| Month     | 2021    | 2022    | 2023    |
|-----------|---------|---------|---------|
| January   | 155,771 | 176,283 | 174,987 |
| February  | 155,385 | 167,466 |         |
| March     | 169,706 | 156,850 |         |
| April     | 156,132 | 185,150 |         |
| May       | 159,909 | 207,907 |         |
| June      | 181,792 | 177,305 |         |
| July      | 179,127 | 194,801 |         |
| August    | 153,875 | 166,359 |         |
| September | 158,144 | 193,804 |         |
| October   | 165,169 | 197,582 |         |
| November  | 183,638 | 177,711 |         |
| December  | 161,584 | 171,771 |         |

### Median Price

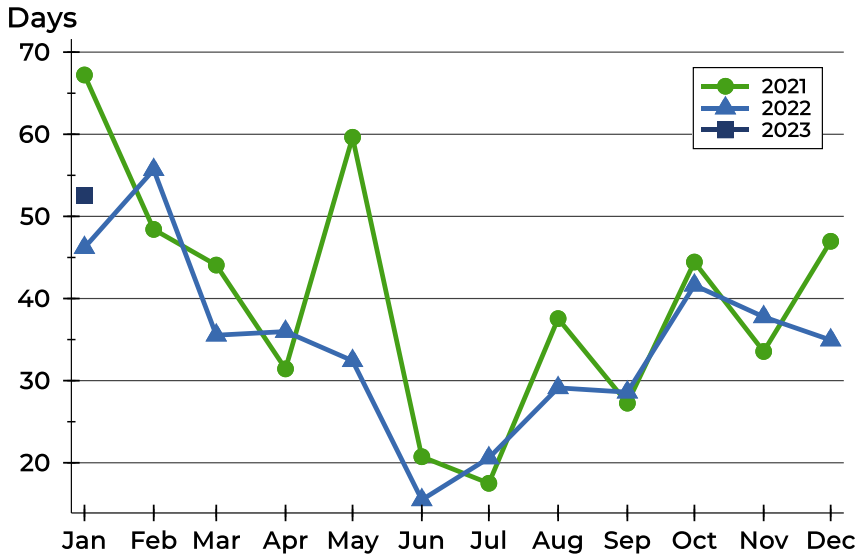


| Month     | 2021    | 2022    | 2023    |
|-----------|---------|---------|---------|
| January   | 148,000 | 181,000 | 140,500 |
| February  | 152,000 | 172,950 |         |
| March     | 165,000 | 146,000 |         |
| April     | 149,900 | 187,500 |         |
| May       | 155,250 | 171,000 |         |
| June      | 171,750 | 177,000 |         |
| July      | 183,500 | 181,750 |         |
| August    | 149,900 | 154,450 |         |
| September | 146,500 | 190,000 |         |
| October   | 170,000 | 195,000 |         |
| November  | 171,000 | 171,250 |         |
| December  | 153,950 | 152,500 |         |



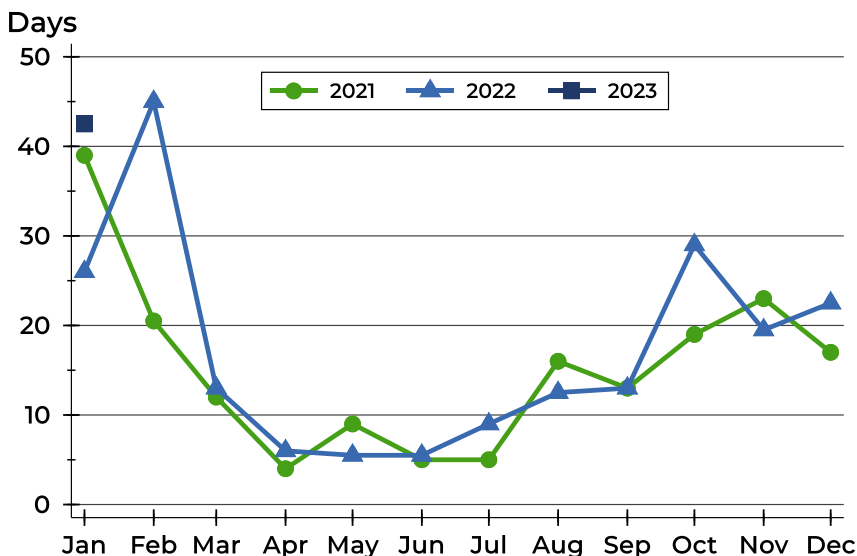
## Geary County Closed Listings Analysis

### Average DOM



| Month     | 2021 | 2022 | 2023 |
|-----------|------|------|------|
| January   | 67   | 46   | 53   |
| February  | 48   | 56   |      |
| March     | 44   | 36   |      |
| April     | 31   | 36   |      |
| May       | 60   | 32   |      |
| June      | 21   | 15   |      |
| July      | 18   | 21   |      |
| August    | 38   | 29   |      |
| September | 27   | 29   |      |
| October   | 44   | 42   |      |
| November  | 34   | 38   |      |
| December  | 47   | 35   |      |

### Median DOM



| Month     | 2021 | 2022 | 2023 |
|-----------|------|------|------|
| January   | 39   | 26   | 43   |
| February  | 21   | 45   |      |
| March     | 12   | 13   |      |
| April     | 4    | 6    |      |
| May       | 9    | 6    |      |
| June      | 5    | 6    |      |
| July      | 5    | 9    |      |
| August    | 16   | 13   |      |
| September | 13   | 13   |      |
| October   | 19   | 29   |      |
| November  | 23   | 20   |      |
| December  | 17   | 23   |      |



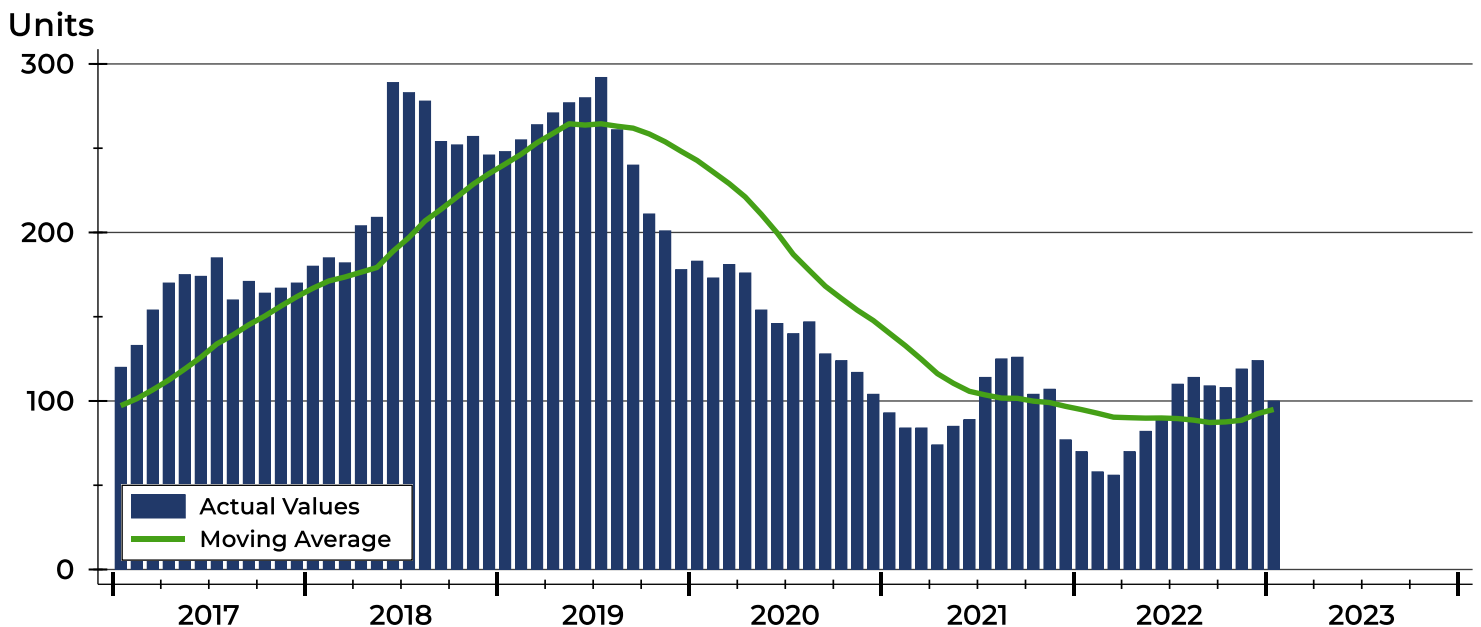
## Geary County Active Listings Analysis

| Summary Statistics for Active Listings |                     | 2023    | End of January 2022 | Change |
|--|---------------------|---------|---------------------|--------|
| Active Listings                        |                     | 100     | 70                  | 42.9%  |
| Volume (1,000s)                        |                     | 18,584  | 11,323              | 64.1%  |
| Months' Supply                         |                     | 2.0     | 1.2                 | 66.7%  |
| Average                                | List Price          | 185,842 | 161,751             | 14.9%  |
|  | Days on Market      | 91      | 84                  | 8.3%   |
|  | Percent of Original | 96.9%   | 97.1%               | -0.2%  |
| Median                                 | List Price          | 189,500 | 131,250             | 44.4%  |
|  | Days on Market      | 84      | 63                  | 33.3%  |
|  | Percent of Original | 100.0%  | 100.0%              | 0.0%   |

A total of 100 homes were available for sale in Geary County at the end of January. This represents a 2.0 months' supply of active listings.

The median list price of homes on the market at the end of January was \$189,500, up 44.4% from 2022. The typical time on market for active listings was 84 days, up from 63 days a year earlier.

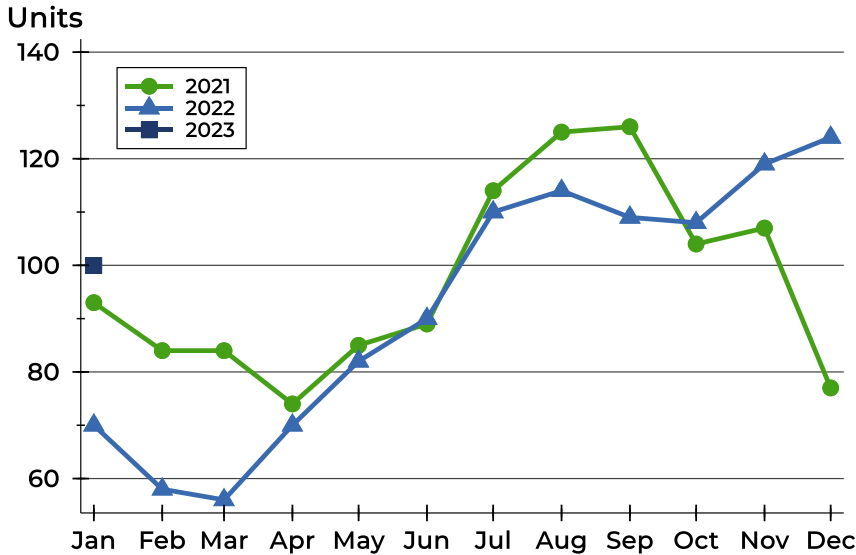
## History of Active Listings





## Geary County Active Listings Analysis

### Active Listings by Month



| Month     | 2021 | 2022 | 2023 |
|-----------|------|------|------|
| January   | 93   | 70   | 100  |
| February  | 84   | 58   |      |
| March     | 84   | 56   |      |
| April     | 74   | 70   |      |
| May       | 85   | 82   |      |
| June      | 89   | 90   |      |
| July      | 114  | 110  |      |
| August    | 125  | 114  |      |
| September | 126  | 109  |      |
| October   | 104  | 108  |      |
| November  | 107  | 119  |      |
| December  | 77   | 124  |      |

### Active Listings by Price Range

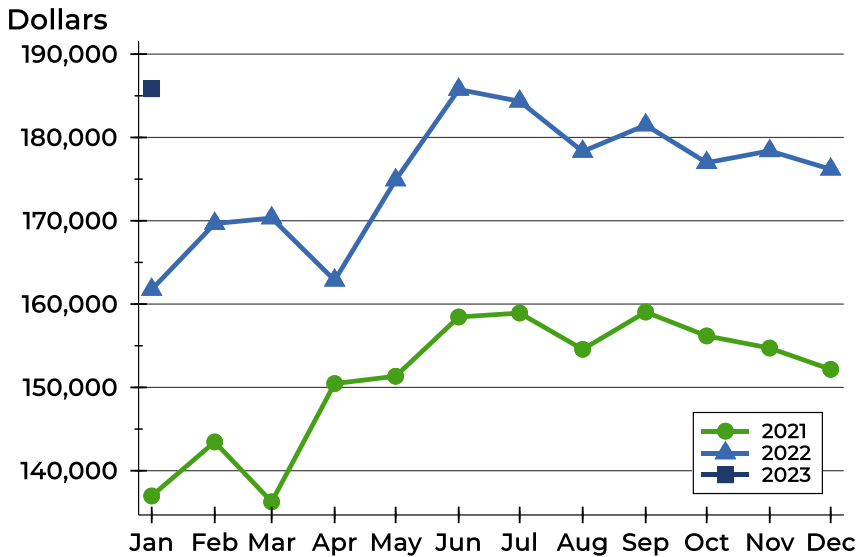
| Price Range         | Active Listings |         | Months' Supply | List Price |         | Days on Market |      | Price as % of Orig. |        |
|---------------------|-----------------|---------|----------------|------------|---------|----------------|------|---------------------|--------|
|                     | Number          | Percent |                | Average    | Median  | Avg.           | Med. | Avg.                | Med.   |
| Below \$25,000      | 0               | 0.0%    | N/A            | N/A        | N/A     | N/A            | N/A  | N/A                 | N/A    |
| \$25,000-\$49,999   | 1               | 1.0%    | 0.6            | 25,000     | 25,000  | 48             | 48   | 100.0%              | 100.0% |
| \$50,000-\$99,999   | 11              | 11.0%   | 1.9            | 73,245     | 72,500  | 102            | 86   | 94.9%               | 100.0% |
| \$100,000-\$124,999 | 9               | 9.0%    | 1.7            | 116,311    | 119,900 | 132            | 160  | 95.1%               | 96.0%  |
| \$125,000-\$149,999 | 13              | 13.0%   | 1.7            | 134,508    | 134,900 | 81             | 84   | 97.8%               | 100.0% |
| \$150,000-\$174,999 | 10              | 10.0%   | 1.9            | 159,420    | 159,450 | 118            | 91   | 97.5%               | 99.1%  |
| \$175,000-\$199,999 | 15              | 15.0%   | 2.6            | 189,707    | 190,000 | 93             | 91   | 97.0%               | 100.0% |
| \$200,000-\$249,999 | 23              | 23.0%   | 2.7            | 220,783    | 220,000 | 88             | 92   | 96.9%               | 98.2%  |
| \$250,000-\$299,999 | 13              | 13.0%   | 1.6            | 274,115    | 275,000 | 49             | 44   | 97.8%               | 100.0% |
| \$300,000-\$399,999 | 4               | 4.0%    | 1.9            | 319,450    | 313,950 | 49             | 45   | 99.1%               | 100.0% |
| \$400,000-\$499,999 | 0               | 0.0%    | N/A            | N/A        | N/A     | N/A            | N/A  | N/A                 | N/A    |
| \$500,000-\$749,999 | 1               | 1.0%    | N/A            | 599,000    | 599,000 | 252            | 252  | 92.9%               | 92.9%  |
| \$750,000-\$999,999 | 0               | 0.0%    | N/A            | N/A        | N/A     | N/A            | N/A  | N/A                 | N/A    |
| \$1,000,000 and up  | 0               | 0.0%    | N/A            | N/A        | N/A     | N/A            | N/A  | N/A                 | N/A    |





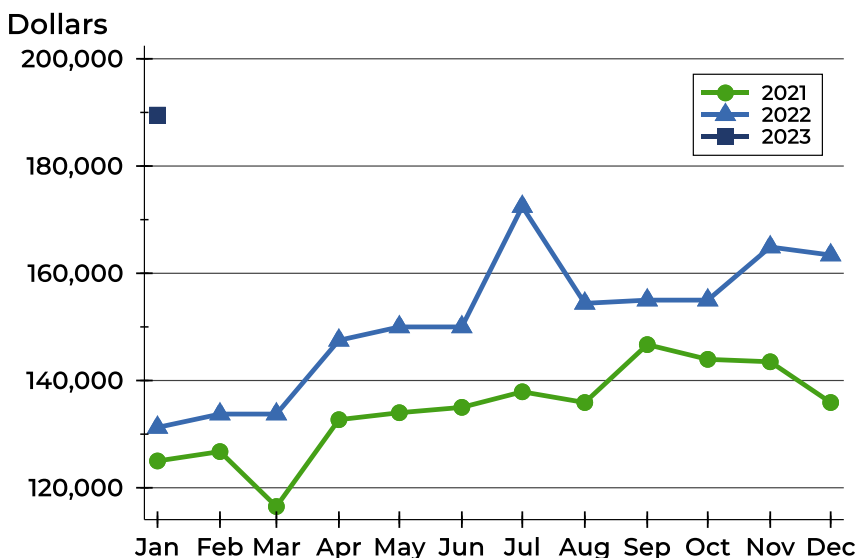
## Geary County Active Listings Analysis

### Average Price



| Month     | 2021    | 2022    | 2023           |
|-----------|---------|---------|----------------|
| January   | 136,974 | 161,751 | <b>185,842</b> |
| February  | 143,455 | 169,662 |                |
| March     | 136,261 | 170,329 |                |
| April     | 150,461 | 162,858 |                |
| May       | 151,338 | 174,890 |                |
| June      | 158,451 | 185,756 |                |
| July      | 158,926 | 184,341 |                |
| August    | 154,572 | 178,318 |                |
| September | 159,050 | 181,486 |                |
| October   | 156,179 | 176,966 |                |
| November  | 154,722 | 178,391 |                |
| December  | 152,166 | 176,182 |                |

### Median Price

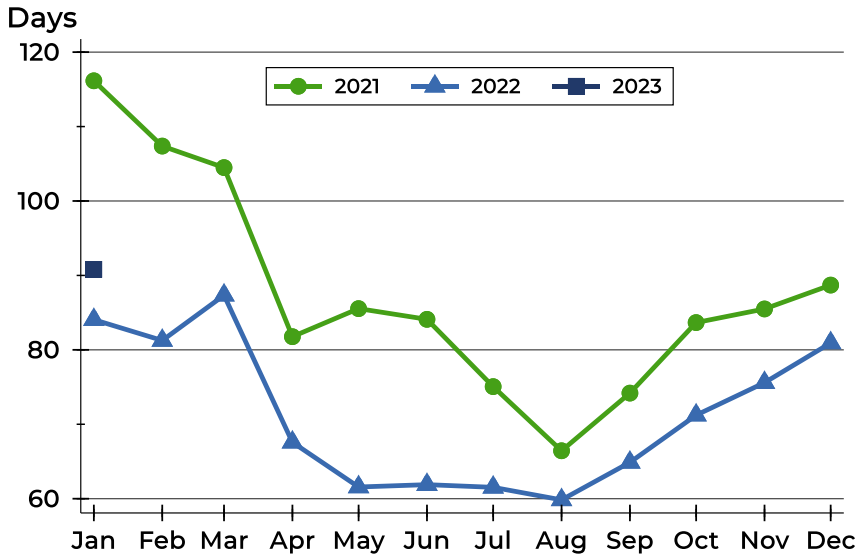


| Month     | 2021    | 2022    | 2023           |
|-----------|---------|---------|----------------|
| January   | 125,000 | 131,250 | <b>189,500</b> |
| February  | 126,750 | 133,750 |                |
| March     | 116,500 | 133,750 |                |
| April     | 132,700 | 147,500 |                |
| May       | 134,000 | 150,000 |                |
| June      | 135,000 | 150,000 |                |
| July      | 137,900 | 172,450 |                |
| August    | 135,900 | 154,400 |                |
| September | 146,700 | 155,000 |                |
| October   | 143,950 | 155,000 |                |
| November  | 143,500 | 164,900 |                |
| December  | 135,900 | 163,400 |                |



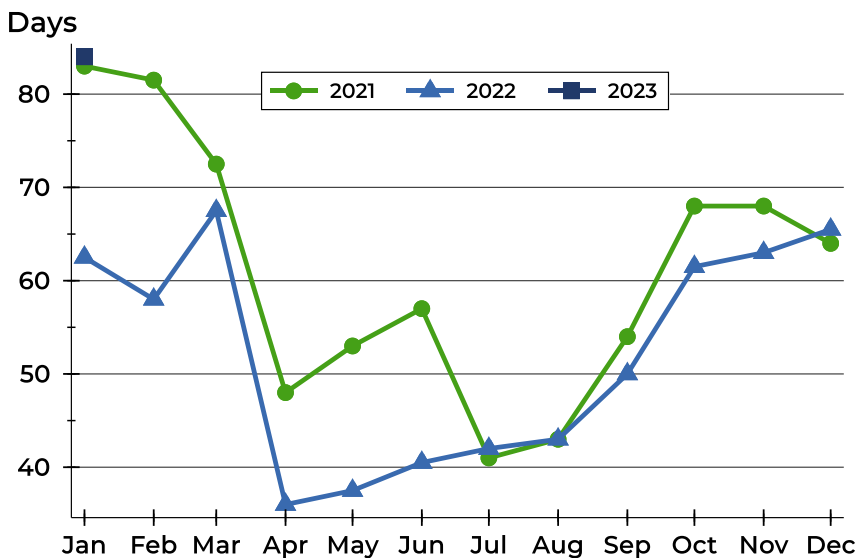
## Geary County Active Listings Analysis

### Average DOM



| Month     | 2021 | 2022 | 2023 |
|-----------|------|------|------|
| January   | 116  | 84   | 91   |
| February  | 107  | 81   |      |
| March     | 104  | 87   |      |
| April     | 82   | 68   |      |
| May       | 86   | 62   |      |
| June      | 84   | 62   |      |
| July      | 75   | 62   |      |
| August    | 66   | 60   |      |
| September | 74   | 65   |      |
| October   | 84   | 71   |      |
| November  | 85   | 76   |      |
| December  | 89   | 81   |      |

### Median DOM

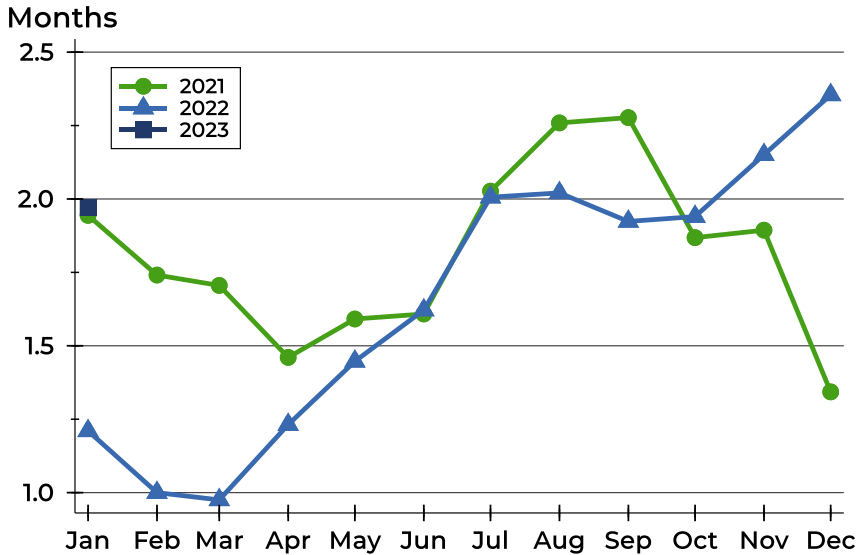


| Month     | 2021 | 2022 | 2023 |
|-----------|------|------|------|
| January   | 83   | 63   | 84   |
| February  | 82   | 58   |      |
| March     | 73   | 68   |      |
| April     | 48   | 36   |      |
| May       | 53   | 38   |      |
| June      | 57   | 41   |      |
| July      | 41   | 42   |      |
| August    | 43   | 43   |      |
| September | 54   | 50   |      |
| October   | 68   | 62   |      |
| November  | 68   | 63   |      |
| December  | 64   | 66   |      |



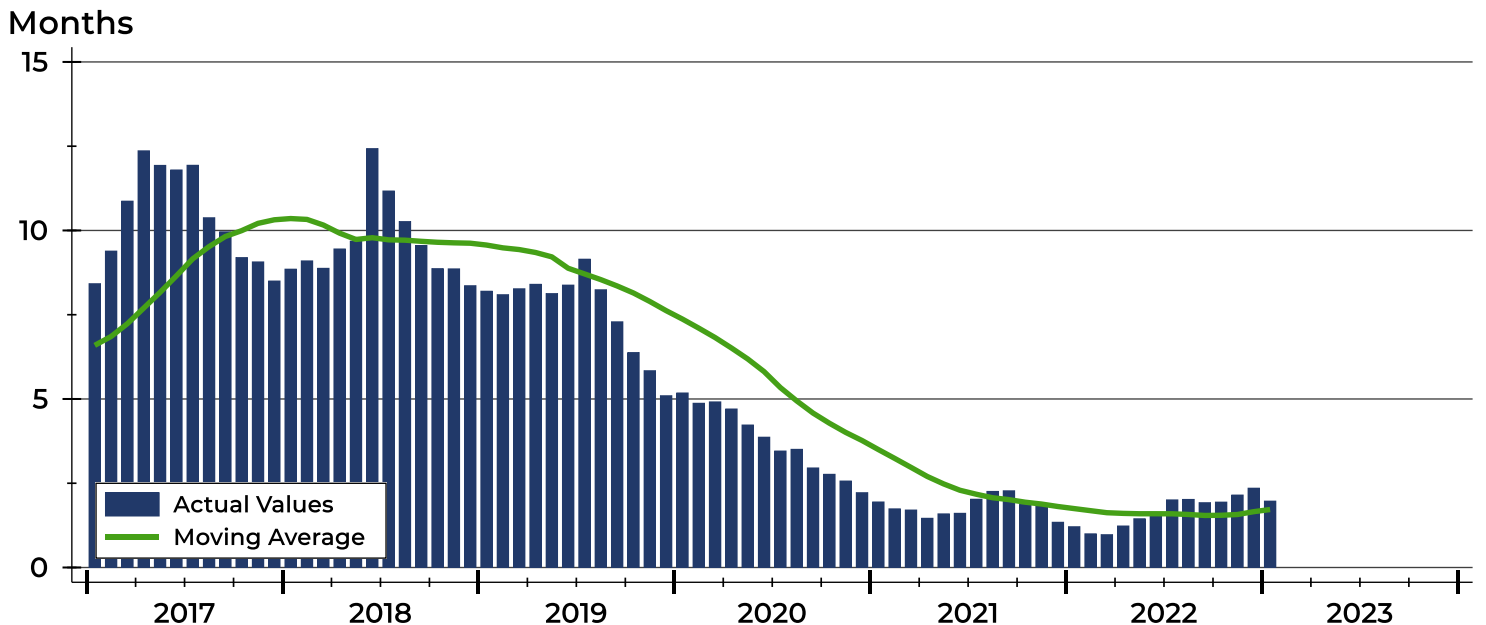
# Geary County Months' Supply Analysis

## Months' Supply by Month



| Month     | 2021 | 2022 | 2023 |
|-----------|------|------|------|
| January   | 1.9  | 1.2  | 2.0  |
| February  | 1.7  | 1.0  | 1.0  |
| March     | 1.7  | 1.0  | 1.0  |
| April     | 1.5  | 1.2  | 1.2  |
| May       | 1.6  | 1.4  | 1.4  |
| June      | 1.6  | 1.6  | 1.6  |
| July      | 2.0  | 2.0  | 2.0  |
| August    | 2.3  | 2.0  | 2.0  |
| September | 2.3  | 1.9  | 1.9  |
| October   | 1.9  | 1.9  | 1.9  |
| November  | 1.9  | 2.2  | 2.2  |
| December  | 1.3  | 2.4  | 2.4  |

## History of Month's Supply





## Geary County New Listings Analysis

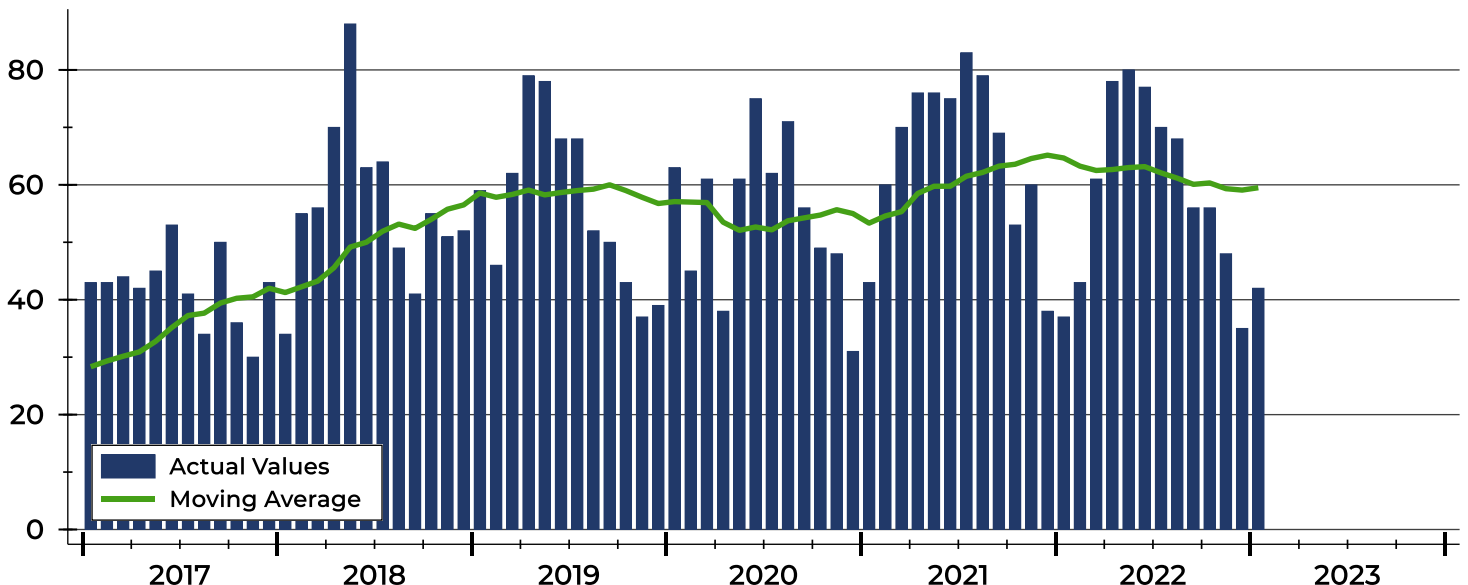
| Summary Statistics for New Listings |                    | 2023    | January 2022 | Change |
|-------------------------------------|--------------------|---------|--------------|--------|
| Current Month                       | New Listings       | 42      | 37           | 13.5%  |
|                                     | Volume (1,000s)    | 8,197   | 6,764        | 21.2%  |
|                                     | Average List Price | 195,167 | 182,805      | 6.8%   |
|                                     | Median List Price  | 186,750 | 148,000      | 26.2%  |
| Year-to-Date                        | New Listings       | 42      | 37           | 13.5%  |
|                                     | Volume (1,000s)    | 8,197   | 6,764        | 21.2%  |
|                                     | Average List Price | 195,167 | 182,805      | 6.8%   |
|                                     | Median List Price  | 186,750 | 148,000      | 26.2%  |

A total of 42 new listings were added in Geary County during January, up 13.5% from the same month in 2022.

The median list price of these homes was \$186,750 up from \$148,000 in 2022.

## History of New Listings

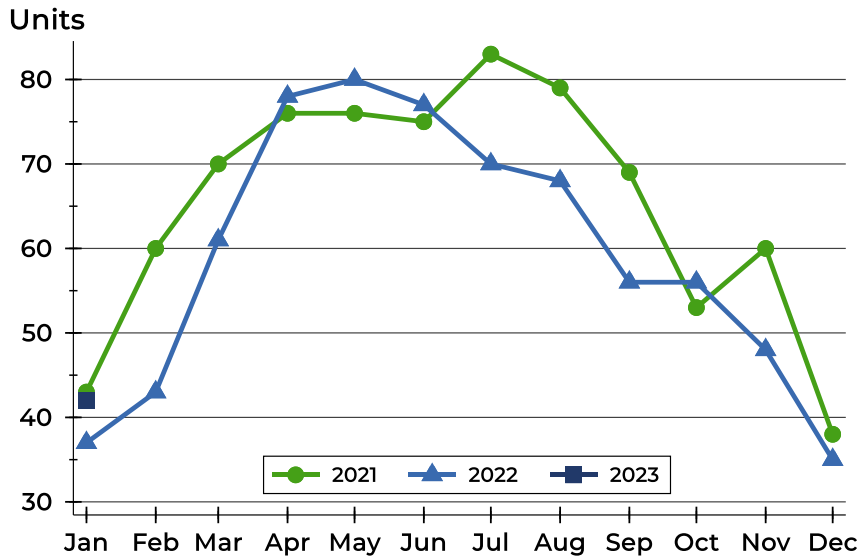
Units





## Geary County New Listings Analysis

### New Listings by Month



| Month     | 2021 | 2022 | 2023 |
|-----------|------|------|------|
| January   | 43   | 37   | 42   |
| February  | 60   | 43   |      |
| March     | 70   | 61   |      |
| April     | 76   | 78   |      |
| May       | 76   | 80   |      |
| June      | 75   | 77   |      |
| July      | 83   | 70   |      |
| August    | 79   | 68   |      |
| September | 69   | 56   |      |
| October   | 53   | 56   |      |
| November  | 60   | 48   |      |
| December  | 38   | 35   |      |

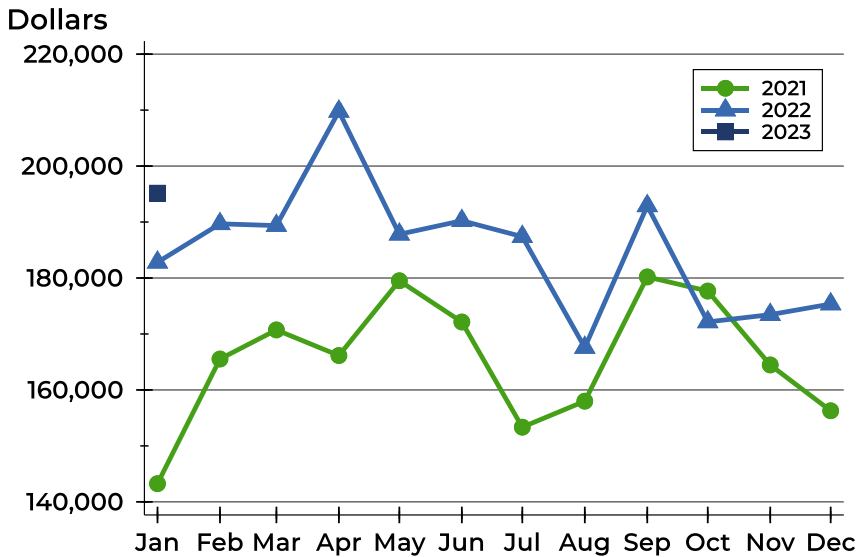
### New Listings by Price Range

| Price Range         | New Listings |         | List Price |         | Days on Market |      | Price as % of Orig. |        |
|---------------------|--------------|---------|------------|---------|----------------|------|---------------------|--------|
|                     | Number       | Percent | Average    | Median  | Avg.           | Med. | Avg.                | Med.   |
| Below \$25,000      | 0            | 0.0%    | N/A        | N/A     | N/A            | N/A  | N/A                 | N/A    |
| \$25,000-\$49,999   | 0            | 0.0%    | N/A        | N/A     | N/A            | N/A  | N/A                 | N/A    |
| \$50,000-\$99,999   | 5            | 11.9%   | 78,980     | 84,900  | 11             | 7    | 100.0%              | 100.0% |
| \$100,000-\$124,999 | 3            | 7.1%    | 121,633    | 120,000 | 13             | 12   | 100.0%              | 100.0% |
| \$125,000-\$149,999 | 6            | 14.3%   | 133,067    | 132,500 | 11             | 12   | 100.6%              | 100.0% |
| \$150,000-\$174,999 | 4            | 9.5%    | 159,450    | 159,950 | 9              | 2    | 99.2%               | 100.0% |
| \$175,000-\$199,999 | 7            | 16.7%   | 187,914    | 189,500 | 20             | 19   | 99.0%               | 100.0% |
| \$200,000-\$249,999 | 6            | 14.3%   | 224,317    | 224,500 | 14             | 12   | 99.5%               | 100.0% |
| \$250,000-\$299,999 | 7            | 16.7%   | 273,543    | 274,900 | 16             | 11   | 99.0%               | 100.0% |
| \$300,000-\$399,999 | 4            | 9.5%    | 356,225    | 365,000 | 9              | 5    | 100.0%              | 100.0% |
| \$400,000-\$499,999 | 0            | 0.0%    | N/A        | N/A     | N/A            | N/A  | N/A                 | N/A    |
| \$500,000-\$749,999 | 0            | 0.0%    | N/A        | N/A     | N/A            | N/A  | N/A                 | N/A    |
| \$750,000-\$999,999 | 0            | 0.0%    | N/A        | N/A     | N/A            | N/A  | N/A                 | N/A    |
| \$1,000,000 and up  | 0            | 0.0%    | N/A        | N/A     | N/A            | N/A  | N/A                 | N/A    |



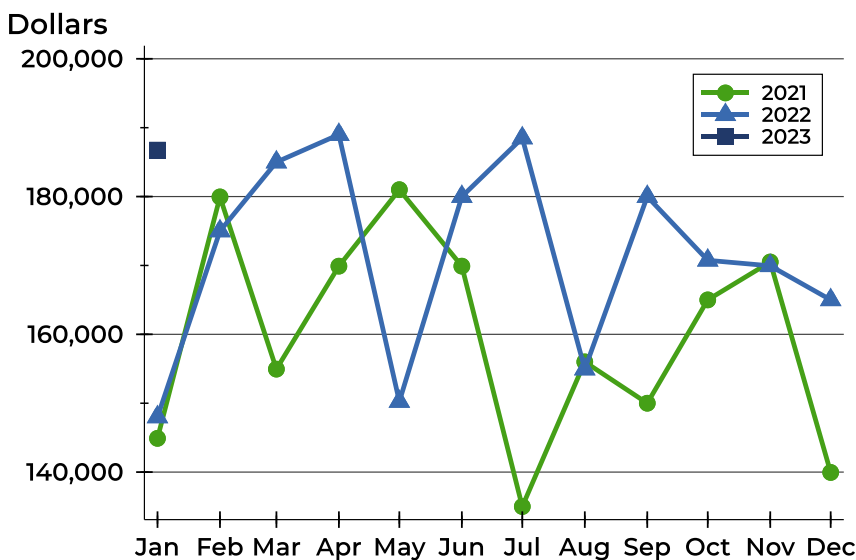
## Geary County New Listings Analysis

### Average Price



| Month     | 2021    | 2022    | 2023           |
|-----------|---------|---------|----------------|
| January   | 143,252 | 182,805 | <b>195,167</b> |
| February  | 165,525 | 189,685 |                |
| March     | 170,726 | 189,362 |                |
| April     | 166,146 | 209,772 |                |
| May       | 179,516 | 187,818 |                |
| June      | 172,141 | 190,236 |                |
| July      | 153,352 | 187,390 |                |
| August    | 157,994 | 167,583 |                |
| September | 180,195 | 192,888 |                |
| October   | 177,671 | 172,152 |                |
| November  | 164,467 | 173,456 |                |
| December  | 156,280 | 175,345 |                |

### Median Price



| Month     | 2021    | 2022    | 2023           |
|-----------|---------|---------|----------------|
| January   | 144,900 | 148,000 | <b>186,750</b> |
| February  | 179,950 | 175,000 |                |
| March     | 154,950 | 185,000 |                |
| April     | 169,900 | 189,000 |                |
| May       | 181,000 | 150,250 |                |
| June      | 169,900 | 180,000 |                |
| July      | 135,000 | 188,500 |                |
| August    | 156,000 | 154,950 |                |
| September | 150,000 | 180,000 |                |
| October   | 165,000 | 170,750 |                |
| November  | 170,750 | 169,950 |                |
| December  | 139,950 | 165,000 |                |



## Geary County Contracts Written Analysis

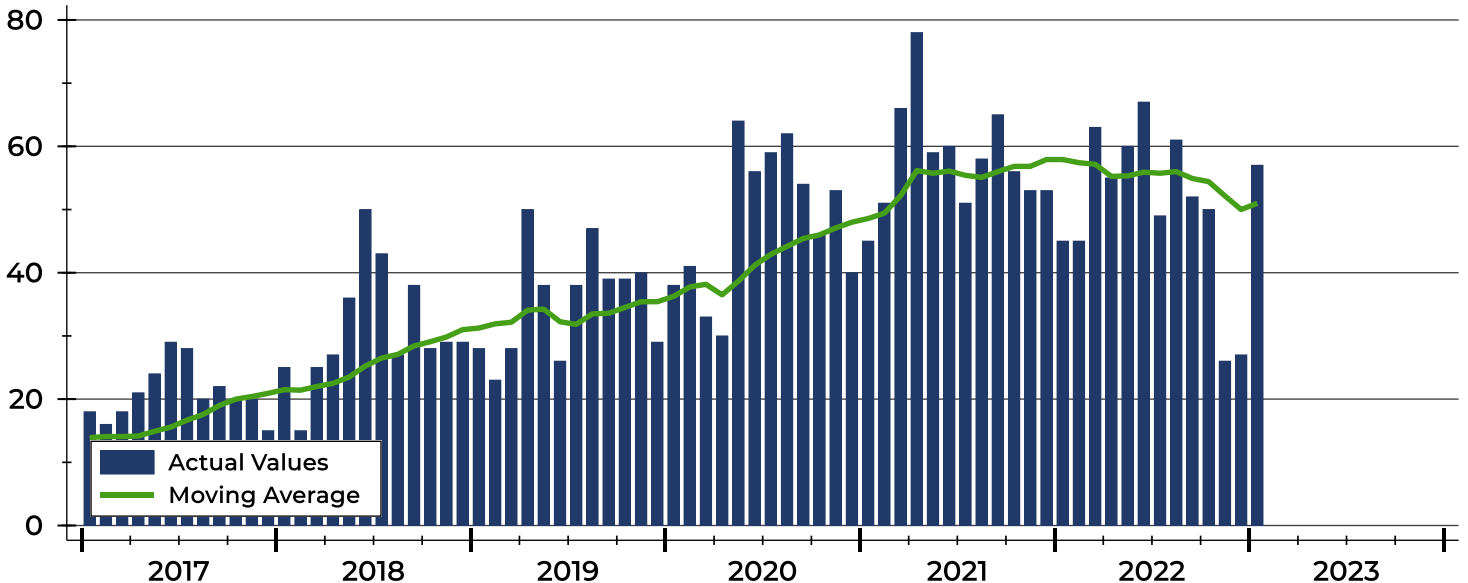
| Summary Statistics for Contracts Written |                     | January |         |        | Year-to-Date |         |        |
|--|---------------------|---------|---------|--------|--------------|---------|--------|
|  |                     | 2023    | 2022    | Change | 2023         | 2022    | Change |
| Contracts Written                        |                     | 57      | 45      | 26.7%  | 57           | 45      | 26.7%  |
| Volume (1,000s)                          |                     | 9,220   | 7,472   | 23.4%  | 9,220        | 7,472   | 23.4%  |
| Average                                  | Sale Price          | 161,749 | 166,044 | -2.6%  | 161,749      | 166,044 | -2.6%  |
|  | Days on Market      | 47      | 54      | -13.0% | 47           | 54      | -13.0% |
|  | Percent of Original | 96.6%   | 97.0%   | -0.4%  | 96.6%        | 97.0%   | -0.4%  |
| Median                                   | Sale Price          | 149,900 | 150,000 | -0.1%  | 149,900      | 150,000 | -0.1%  |
|  | Days on Market      | 32      | 34      | -5.9%  | 32           | 34      | -5.9%  |
|  | Percent of Original | 100.0%  | 98.6%   | 1.4%   | 100.0%       | 98.6%   | 1.4%   |

A total of 57 contracts for sale were written in Geary County during the month of January, up from 45 in 2022. The median list price of these homes was \$149,900, down from \$150,000 the prior year.

Half of the homes that went under contract in January were on the market less than 32 days, compared to 34 days in January 2022.

## History of Contracts Written

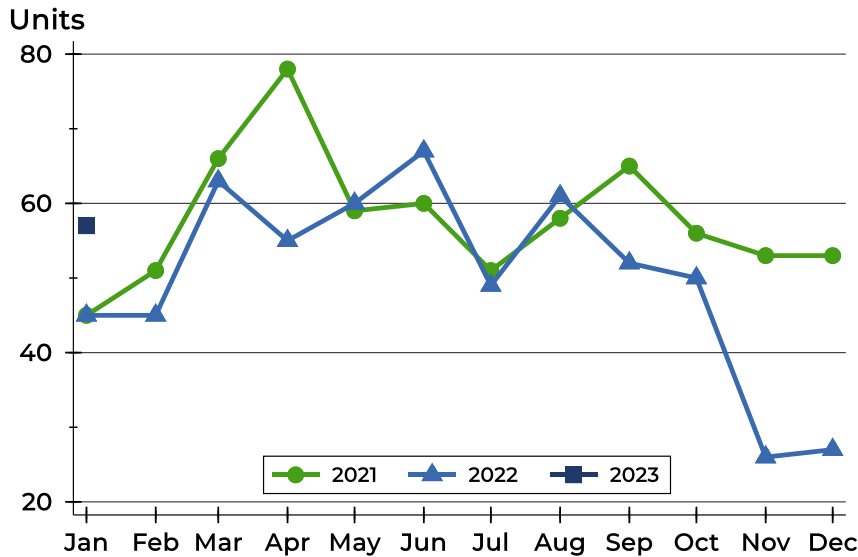
Units





## Geary County Contracts Written Analysis

### Contracts Written by Month



| Month     | 2021 | 2022 | 2023 |
|-----------|------|------|------|
| January   | 45   | 45   | 57   |
| February  | 51   | 45   |      |
| March     | 66   | 63   |      |
| April     | 78   | 55   |      |
| May       | 59   | 60   |      |
| June      | 60   | 67   |      |
| July      | 51   | 49   |      |
| August    | 58   | 61   |      |
| September | 65   | 52   |      |
| October   | 56   | 50   |      |
| November  | 53   | 26   |      |
| December  | 53   | 27   |      |

### Contracts Written by Price Range

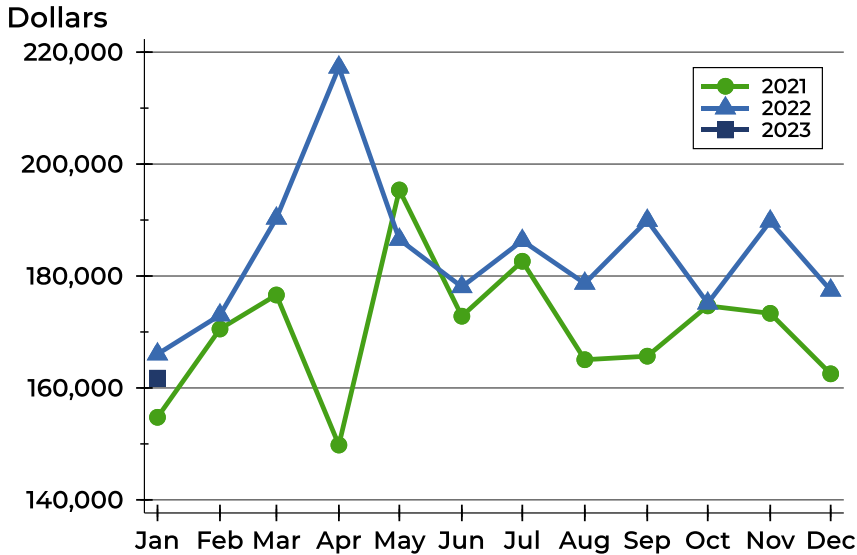
| Price Range         | Contracts Written |         | List Price |         | Days on Market |      | Price as % of Orig. |        |
|---------------------|-------------------|---------|------------|---------|----------------|------|---------------------|--------|
|                     | Number            | Percent | Average    | Median  | Avg.           | Med. | Avg.                | Med.   |
| Below \$25,000      | 1                 | 1.8%    | 14,900     | 14,900  | 81             | 81   | 54.2%               | 54.2%  |
| \$25,000-\$49,999   | 1                 | 1.8%    | 30,000     | 30,000  | 20             | 20   | 83.3%               | 83.3%  |
| \$50,000-\$99,999   | 12                | 21.1%   | 77,050     | 79,950  | 58             | 46   | 95.0%               | 100.0% |
| \$100,000-\$124,999 | 5                 | 8.8%    | 119,960    | 120,000 | 58             | 43   | 97.0%               | 100.0% |
| \$125,000-\$149,999 | 10                | 17.5%   | 139,870    | 140,000 | 38             | 27   | 98.7%               | 100.0% |
| \$150,000-\$174,999 | 8                 | 14.0%   | 160,400    | 160,000 | 46             | 36   | 99.2%               | 100.0% |
| \$175,000-\$199,999 | 7                 | 12.3%   | 190,743    | 189,900 | 52             | 22   | 96.6%               | 100.0% |
| \$200,000-\$249,999 | 4                 | 7.0%    | 229,850    | 232,450 | 56             | 57   | 97.5%               | 98.9%  |
| \$250,000-\$299,999 | 6                 | 10.5%   | 266,483    | 264,500 | 39             | 44   | 99.5%               | 100.0% |
| \$300,000-\$399,999 | 3                 | 5.3%    | 371,667    | 365,000 | 5              | 4    | 100.0%              | 100.0% |
| \$400,000-\$499,999 | 0                 | 0.0%    | N/A        | N/A     | N/A            | N/A  | N/A                 | N/A    |
| \$500,000-\$749,999 | 0                 | 0.0%    | N/A        | N/A     | N/A            | N/A  | N/A                 | N/A    |
| \$750,000-\$999,999 | 0                 | 0.0%    | N/A        | N/A     | N/A            | N/A  | N/A                 | N/A    |
| \$1,000,000 and up  | 0                 | 0.0%    | N/A        | N/A     | N/A            | N/A  | N/A                 | N/A    |





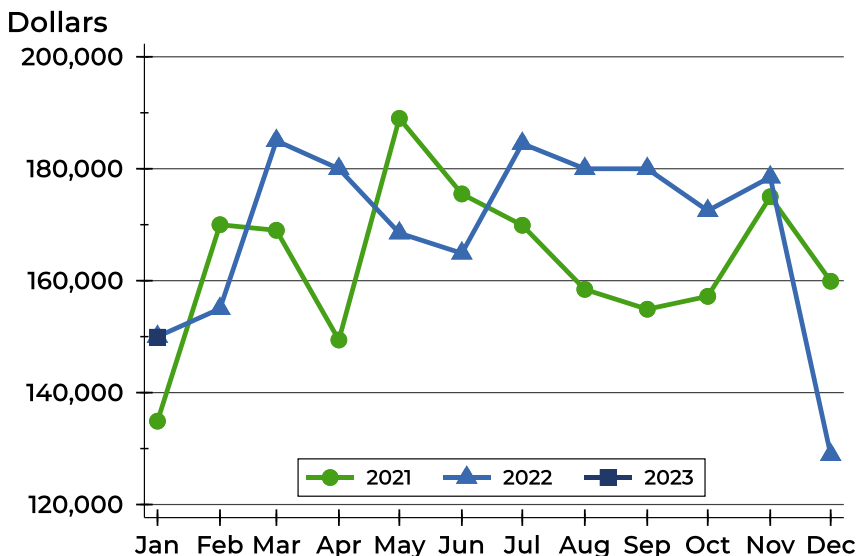
## Geary County Contracts Written Analysis

### Average Price



| Month     | 2021    | 2022    | 2023           |
|-----------|---------|---------|----------------|
| January   | 154,756 | 166,044 | <b>161,749</b> |
| February  | 170,534 | 173,016 |                |
| March     | 176,609 | 190,309 |                |
| April     | 149,799 | 217,294 |                |
| May       | 195,375 | 186,524 |                |
| June      | 172,818 | 178,063 |                |
| July      | 182,634 | 186,323 |                |
| August    | 165,043 | 178,681 |                |
| September | 165,676 | 189,916 |                |
| October   | 174,668 | 175,133 |                |
| November  | 173,332 | 189,785 |                |
| December  | 162,523 | 177,442 |                |

### Median Price

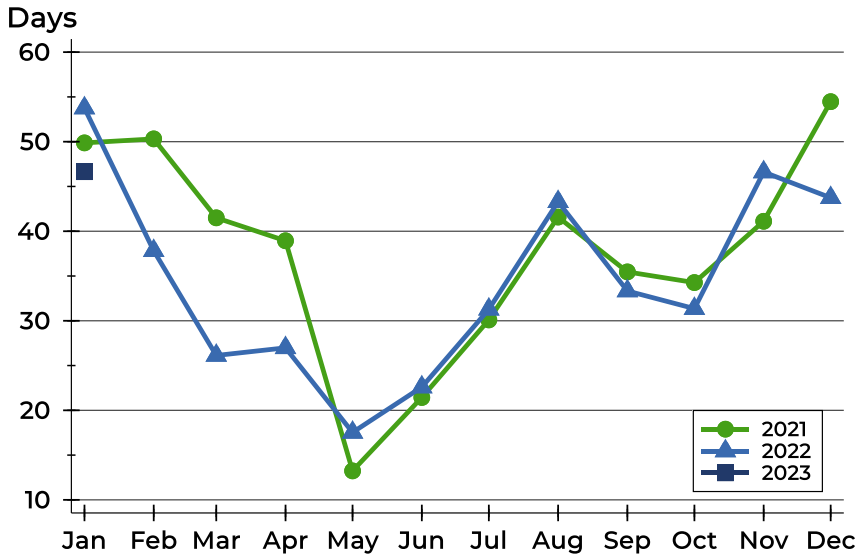


| Month     | 2021    | 2022    | 2023           |
|-----------|---------|---------|----------------|
| January   | 134,900 | 150,000 | <b>149,900</b> |
| February  | 170,000 | 155,000 |                |
| March     | 169,000 | 185,000 |                |
| April     | 149,400 | 180,000 |                |
| May       | 189,000 | 168,500 |                |
| June      | 175,500 | 164,900 |                |
| July      | 169,900 | 184,500 |                |
| August    | 158,450 | 180,000 |                |
| September | 154,900 | 180,000 |                |
| October   | 157,200 | 172,500 |                |
| November  | 175,000 | 178,500 |                |
| December  | 159,900 | 128,900 |                |



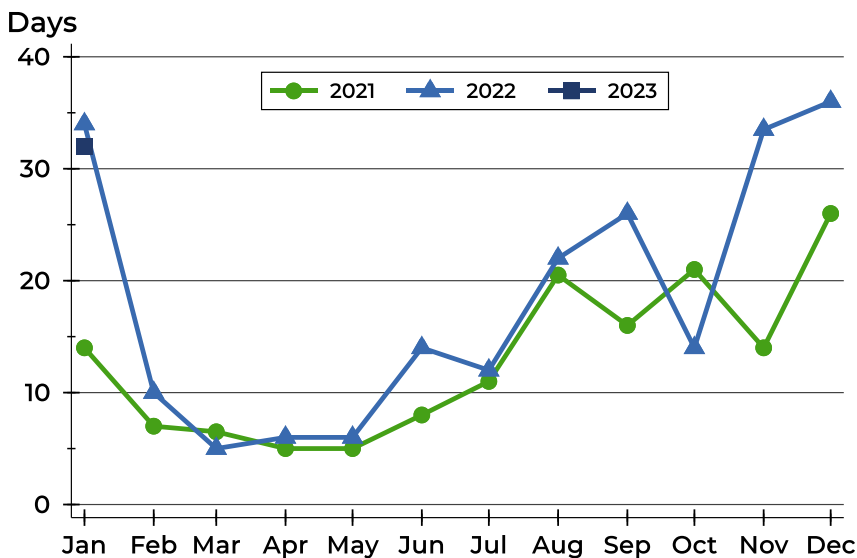
## Geary County Contracts Written Analysis

### Average DOM



| Month     | 2021 | 2022 | 2023      |
|-----------|------|------|-----------|
| January   | 50   | 54   | <b>47</b> |
| February  | 50   | 38   | 38        |
| March     | 42   | 26   | 26        |
| April     | 39   | 27   | 27        |
| May       | 13   | 18   | 18        |
| June      | 21   | 23   | 23        |
| July      | 30   | 31   | 31        |
| August    | 42   | 43   | 43        |
| September | 35   | 33   | 33        |
| October   | 34   | 31   | 31        |
| November  | 41   | 47   | 47        |
| December  | 54   | 44   | 44        |

### Median DOM



| Month     | 2021 | 2022 | 2023      |
|-----------|------|------|-----------|
| January   | 14   | 34   | <b>32</b> |
| February  | 7    | 10   | 10        |
| March     | 7    | 5    | 5         |
| April     | 5    | 6    | 6         |
| May       | 5    | 6    | 6         |
| June      | 8    | 14   | 14        |
| July      | 11   | 12   | 12        |
| August    | 21   | 22   | 22        |
| September | 16   | 26   | 26        |
| October   | 21   | 14   | 14        |
| November  | 14   | 34   | 34        |
| December  | 26   | 36   | 36        |



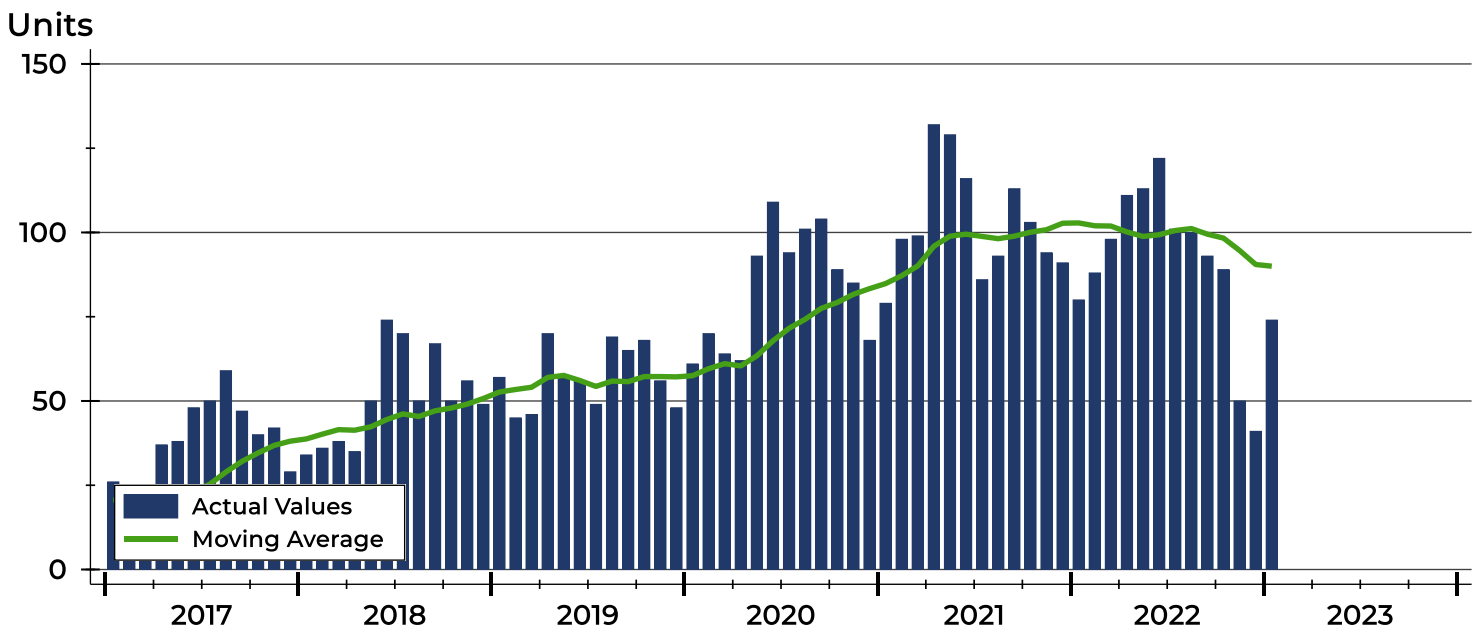
## Geary County Pending Contracts Analysis

| Summary Statistics for Pending Contracts |                     | End of January |         |        |
|--|---------------------|----------------|---------|--------|
|  |                     | 2023           | 2022    | Change |
| Pending Contracts                        |                     | <b>74</b>      | 80      | -7.5%  |
| Volume (1,000s)                          |                     | <b>12,461</b>  | 12,569  | -0.9%  |
| Average                                  | List Price          | <b>168,396</b> | 157,119 | 7.2%   |
|  | Days on Market      | <b>49</b>      | 61      | -19.7% |
|  | Percent of Original | <b>97.1%</b>   | 97.8%   | -0.7%  |
| Median                                   | List Price          | <b>159,945</b> | 151,250 | 5.7%   |
|  | Days on Market      | <b>33</b>      | 45      | -26.7% |
|  | Percent of Original | <b>100.0%</b>  | 100.0%  | 0.0%   |

A total of 74 listings in Geary County had contracts pending at the end of January, down from 80 contracts pending at the end of January 2022.

Pending contracts reflect listings with a contract in place at the end of the month. In contrast, contracts written measures the number of listings put under contract during the month.

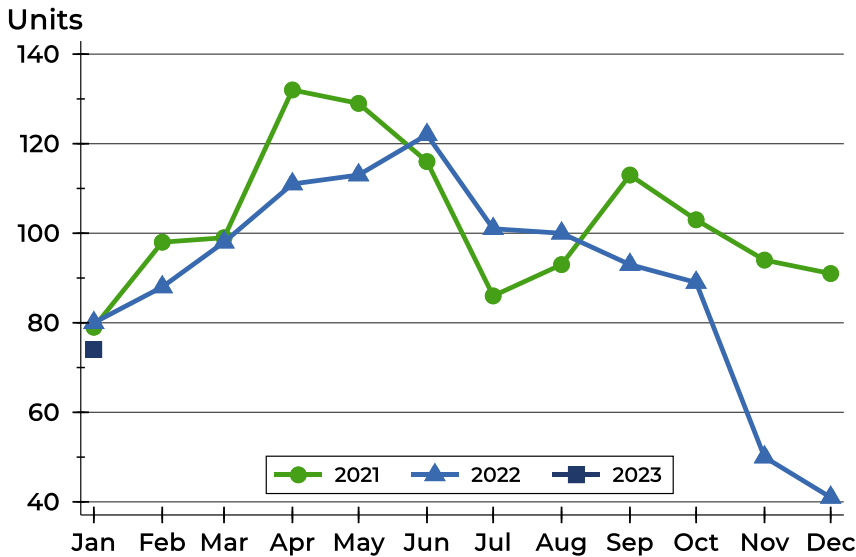
## History of Pending Contracts





## Geary County Pending Contracts Analysis

### Pending Contracts by Month



| Month     | 2021 | 2022 | 2023      |
|-----------|------|------|-----------|
| January   | 79   | 80   | <b>74</b> |
| February  | 98   | 88   |           |
| March     | 99   | 98   |           |
| April     | 132  | 111  |           |
| May       | 129  | 113  |           |
| June      | 116  | 122  |           |
| July      | 86   | 101  |           |
| August    | 93   | 100  |           |
| September | 113  | 93   |           |
| October   | 103  | 89   |           |
| November  | 94   | 50   |           |
| December  | 91   | 41   |           |

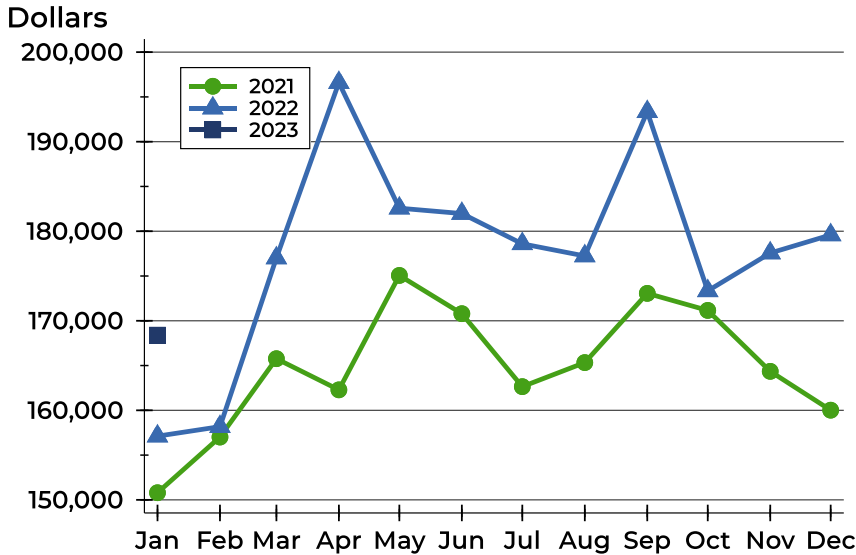
### Pending Contracts by Price Range

| Price Range         | Pending Contracts |         | List Price |         | Days on Market |      | Price as % of Orig. |        |
|---------------------|-------------------|---------|------------|---------|----------------|------|---------------------|--------|
|                     | Number            | Percent | Average    | Median  | Avg.           | Med. | Avg.                | Med.   |
| Below \$25,000      | 1                 | 1.4%    | 14,900     | 14,900  | 81             | 81   | 54.2%               | 54.2%  |
| \$25,000-\$49,999   | 1                 | 1.4%    | 30,000     | 30,000  | 7              | 7    | 100.0%              | 100.0% |
| \$50,000-\$99,999   | 14                | 18.9%   | 77,850     | 79,950  | 58             | 49   | 96.6%               | 100.0% |
| \$100,000-\$124,999 | 6                 | 8.1%    | 119,792    | 119,475 | 49             | 28   | 97.5%               | 100.0% |
| \$125,000-\$149,999 | 11                | 14.9%   | 139,409    | 140,000 | 70             | 61   | 96.2%               | 100.0% |
| \$150,000-\$174,999 | 13                | 17.6%   | 162,530    | 160,000 | 46             | 29   | 98.8%               | 100.0% |
| \$175,000-\$199,999 | 9                 | 12.2%   | 188,133    | 189,500 | 46             | 22   | 97.7%               | 100.0% |
| \$200,000-\$249,999 | 5                 | 6.8%    | 225,880    | 225,000 | 44             | 13   | 98.0%               | 100.0% |
| \$250,000-\$299,999 | 9                 | 12.2%   | 264,867    | 259,000 | 46             | 54   | 98.0%               | 100.0% |
| \$300,000-\$399,999 | 5                 | 6.8%    | 351,000    | 365,000 | 5              | 4    | 100.0%              | 100.0% |
| \$400,000-\$499,999 | 0                 | 0.0%    | N/A        | N/A     | N/A            | N/A  | N/A                 | N/A    |
| \$500,000-\$749,999 | 0                 | 0.0%    | N/A        | N/A     | N/A            | N/A  | N/A                 | N/A    |
| \$750,000-\$999,999 | 0                 | 0.0%    | N/A        | N/A     | N/A            | N/A  | N/A                 | N/A    |
| \$1,000,000 and up  | 0                 | 0.0%    | N/A        | N/A     | N/A            | N/A  | N/A                 | N/A    |



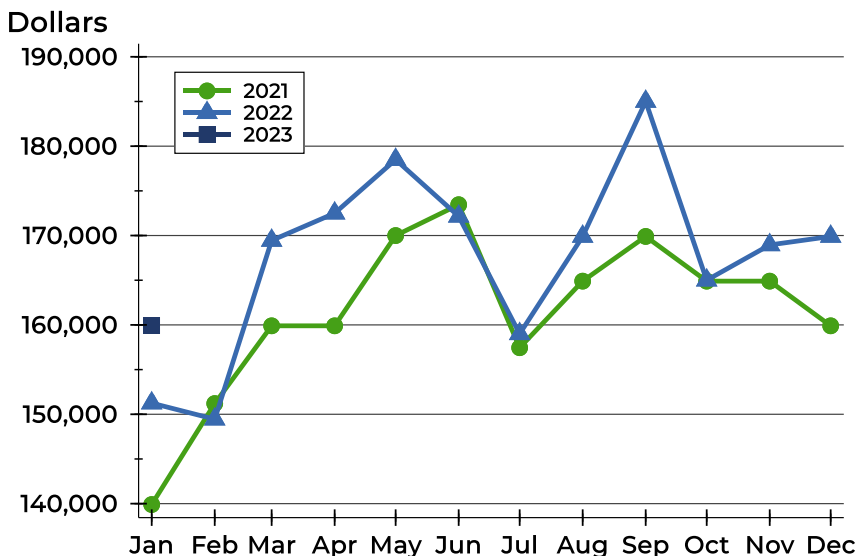
## Geary County Pending Contracts Analysis

### Average Price



| Month     | 2021    | 2022    | 2023           |
|-----------|---------|---------|----------------|
| January   | 150,797 | 157,119 | <b>168,396</b> |
| February  | 157,014 | 158,176 |                |
| March     | 165,765 | 177,010 |                |
| April     | 162,286 | 196,594 |                |
| May       | 175,066 | 182,575 |                |
| June      | 170,791 | 181,978 |                |
| July      | 162,645 | 178,595 |                |
| August    | 165,331 | 177,239 |                |
| September | 173,063 | 193,344 |                |
| October   | 171,159 | 173,339 |                |
| November  | 164,356 | 177,565 |                |
| December  | 160,018 | 179,585 |                |

### Median Price

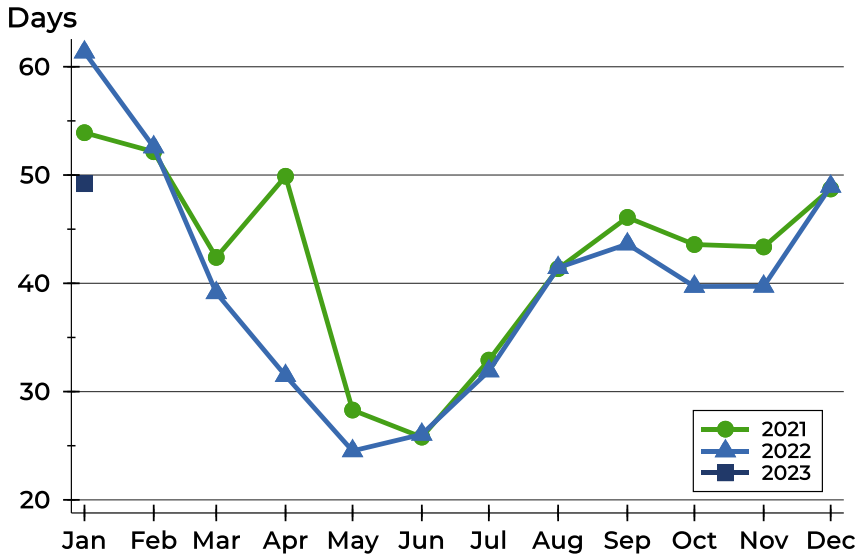


| Month     | 2021    | 2022    | 2023           |
|-----------|---------|---------|----------------|
| January   | 139,900 | 151,250 | <b>159,945</b> |
| February  | 151,200 | 149,450 |                |
| March     | 159,900 | 169,450 |                |
| April     | 159,900 | 172,500 |                |
| May       | 170,000 | 178,500 |                |
| June      | 173,450 | 172,150 |                |
| July      | 157,450 | 159,000 |                |
| August    | 164,900 | 169,900 |                |
| September | 169,900 | 185,000 |                |
| October   | 164,900 | 164,999 |                |
| November  | 164,900 | 168,950 |                |
| December  | 159,900 | 169,900 |                |



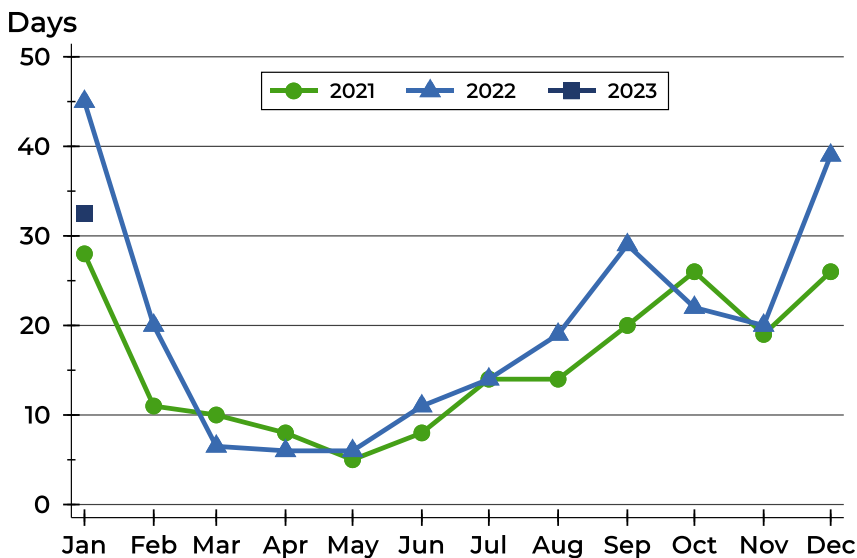
## Geary County Pending Contracts Analysis

### Average DOM



| Month     | 2021 | 2022 | 2023 |
|-----------|------|------|------|
| January   | 54   | 61   | 49   |
| February  | 52   | 53   | 52   |
| March     | 42   | 39   | 39   |
| April     | 50   | 31   | 31   |
| May       | 28   | 25   | 25   |
| June      | 26   | 26   | 26   |
| July      | 33   | 32   | 32   |
| August    | 41   | 41   | 41   |
| September | 46   | 44   | 44   |
| October   | 44   | 40   | 40   |
| November  | 43   | 40   | 40   |
| December  | 49   | 49   | 49   |

### Median DOM



| Month     | 2021 | 2022 | 2023 |
|-----------|------|------|------|
| January   | 28   | 45   | 33   |
| February  | 11   | 20   | 20   |
| March     | 10   | 7    | 7    |
| April     | 8    | 6    | 6    |
| May       | 5    | 6    | 6    |
| June      | 8    | 11   | 11   |
| July      | 14   | 14   | 14   |
| August    | 14   | 19   | 19   |
| September | 20   | 29   | 29   |
| October   | 26   | 22   | 22   |
| November  | 19   | 20   | 20   |
| December  | 26   | 39   | 39   |