



## Pottawatomie County Housing Report



### Market Overview

#### Pottawatomie County Home Sales Rose in November

Total home sales in Pottawatomie County rose by 58.3% last month to 38 units, compared to 24 units in November 2020. Total sales volume was \$10.6 million, up 49.4% from a year earlier.

The median sale price in November was \$265,000, down from \$272,450 a year earlier. Homes that sold in November were typically on the market for 15 days and sold for 100.0% of their list prices.

#### Pottawatomie County Active Listings Down at End of November

The total number of active listings in Pottawatomie County at the end of November was 40 units, down from 47 at the same point in 2020. This represents a 1.2 months' supply of homes available for sale. The median list price of homes on the market at the end of November was \$312,450.

During November, a total of 29 contracts were written up from 17 in November 2020. At the end of the month, there were 56 contracts still pending.

### Report Contents

- Summary Statistics – Page 2
- Closed Listing Analysis – Page 3
- Active Listings Analysis – Page 7
- Months' Supply Analysis – Page 11
- New Listings Analysis – Page 12
- Contracts Written Analysis – Page 15
- Pending Contracts Analysis – Page 19

### Contact Information

Margaret Pendleton, Association Executive  
 Flint Hills Association of REALTORS®  
 205 S. Seth Child Road  
 Manhattan, KS 66502  
 685-776-1211  
[ae@flinthillsrealtors.net](mailto:ae@flinthillsrealtors.net)  
[www.flinthillsrealtors.net](http://www.flinthillsrealtors.net)



## Pottawatomie County Summary Statistics

November MLS Statistics Three-year History		Current Month			Year-to-Date		
		2021	2020	2019	2021	2020	2019
<b>Home Sales</b> Change from prior year	<b>38</b> 58.3%	<b>24</b> 14.3%	<b>21</b> 5.0%	<b>371</b> 9.8%	<b>338</b> 11.6%	<b>303</b> 0.0%	
<b>Active Listings</b> Change from prior year	<b>40</b> -14.9%	<b>47</b> -38.2%	<b>76</b> -24.0%	<b>N/A</b>	<b>N/A</b>	<b>N/A</b>	
<b>Months' Supply</b> Change from prior year	<b>1.2</b> -20.0%	<b>1.5</b> -46.4%	<b>2.8</b> -24.3%	<b>N/A</b>	<b>N/A</b>	<b>N/A</b>	
<b>New Listings</b> Change from prior year	<b>29</b> 31.8%	<b>22</b> 0.0%	<b>22</b> -21.4%	<b>413</b> 5.4%	<b>392</b> -0.8%	<b>395</b> -9.6%	
<b>Contracts Written</b> Change from prior year	<b>29</b> 70.6%	<b>17</b> -26.1%	<b>23</b> 64.3%	<b>383</b> 7.3%	<b>357</b> 13.7%	<b>314</b> 2.3%	
<b>Pending Contracts</b> Change from prior year	<b>56</b> 30.2%	<b>43</b> 10.3%	<b>39</b> 21.9%	<b>N/A</b>	<b>N/A</b>	<b>N/A</b>	
<b>Sales Volume (1,000s)</b> Change from prior year	<b>10,648</b> 49.4%	<b>7,125</b> 27.1%	<b>5,606</b> 26.7%	<b>101,756</b> 18.7%	<b>85,760</b> 18.5%	<b>72,382</b> 3.2%	
<b>Average</b>	<b>Sale Price</b> Change from prior year	<b>280,213</b> -5.6%	<b>296,878</b> 11.2%	<b>266,971</b> 20.7%	<b>274,274</b> 8.1%	<b>253,728</b> 6.2%	<b>238,884</b> 3.2%
	<b>List Price of Actives</b> Change from prior year	<b>299,078</b> 7.6%	<b>277,857</b> 4.6%	<b>265,572</b> 2.4%	<b>N/A</b>	<b>N/A</b>	<b>N/A</b>
	<b>Days on Market</b> Change from prior year	<b>33</b> 73.7%	<b>19</b> -64.2%	<b>53</b> -5.4%	<b>32</b> -31.9%	<b>47</b> -25.4%	<b>63</b> -8.7%
	<b>Percent of List</b> Change from prior year	<b>100.8%</b> 0.9%	<b>99.9%</b> 0.9%	<b>99.0%</b> 1.1%	<b>100.2%</b> 1.1%	<b>99.1%</b> 0.6%	<b>98.5%</b> 0.1%
	<b>Percent of Original</b> Change from prior year	<b>99.7%</b> -1.2%	<b>100.9%</b> 3.3%	<b>97.7%</b> 1.6%	<b>99.4%</b> 1.6%	<b>97.8%</b> 0.9%	<b>96.9%</b> 0.5%
<b>Median</b>	<b>Sale Price</b> Change from prior year	<b>265,000</b> -2.7%	<b>272,450</b> 0.9%	<b>270,000</b> 13.3%	<b>270,000</b> 8.2%	<b>249,450</b> 7.1%	<b>233,000</b> 1.7%
	<b>List Price of Actives</b> Change from prior year	<b>312,450</b> 5.9%	<b>295,000</b> 22.3%	<b>241,250</b> 0.8%	<b>N/A</b>	<b>N/A</b>	<b>N/A</b>
	<b>Days on Market</b> Change from prior year	<b>15</b> 50.0%	<b>10</b> -78.7%	<b>47</b> 42.4%	<b>10</b> -52.4%	<b>21</b> -51.2%	<b>43</b> 4.9%
	<b>Percent of List</b> Change from prior year	<b>100.0%</b> 0.0%	<b>100.0%</b> 0.4%	<b>99.6%</b> 1.3%	<b>100.0%</b> 0.3%	<b>99.7%</b> 0.8%	<b>98.9%</b> -0.3%
	<b>Percent of Original</b> Change from prior year	<b>100.0%</b> 0.0%	<b>100.0%</b> 1.5%	<b>98.5%</b> 1.3%	<b>100.0%</b> 1.0%	<b>99.0%</b> 1.1%	<b>97.9%</b> 0.2%

Note: Year-to-date statistics cannot be calculated for Active Listings, Months' Supply and Pending Contracts.



## Pottawatomie County Closed Listings Analysis

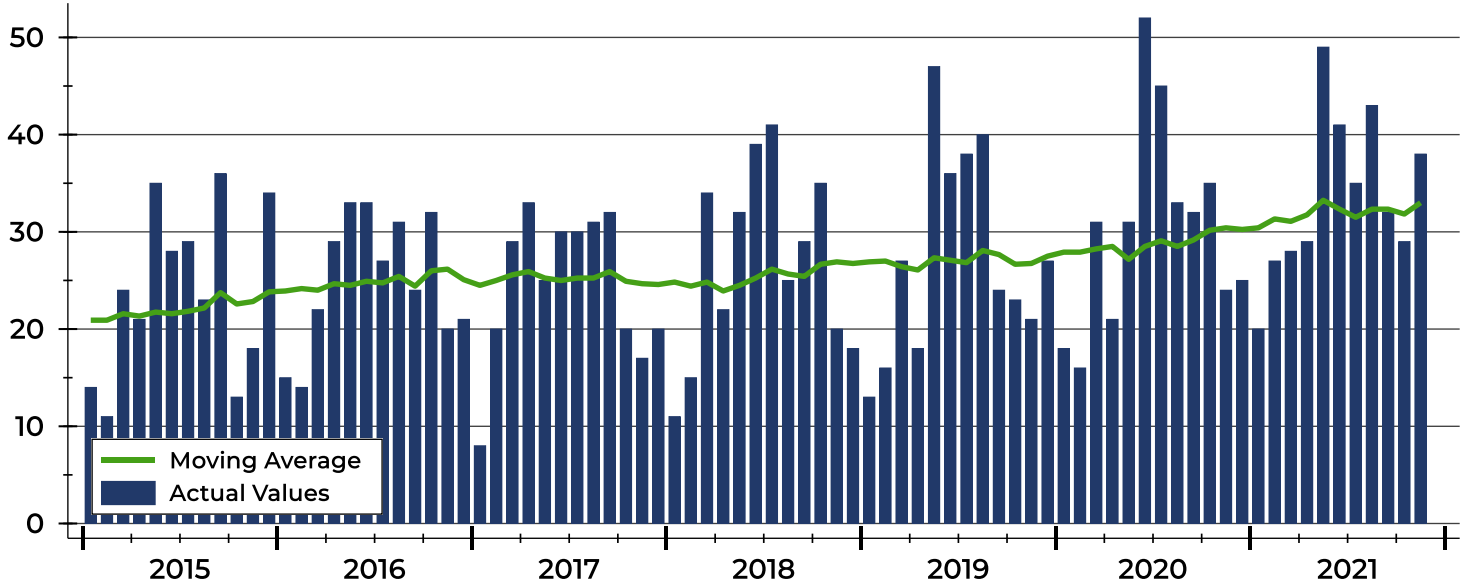
Summary Statistics for Closed Listings		2021	November 2020	Change	2021	Year-to-Date 2020	Change
Closed Listings		<b>38</b>	24	58.3%	<b>371</b>	338	9.8%
Volume (1,000s)		<b>10,648</b>	7,125	49.4%	<b>101,756</b>	85,760	18.7%
Months' Supply		<b>1.2</b>	1.5	-20.0%	<b>N/A</b>	N/A	N/A
Average	Sale Price	<b>280,213</b>	296,878	-5.6%	<b>274,274</b>	253,728	8.1%
	Days on Market	<b>33</b>	19	73.7%	<b>32</b>	47	-31.9%
	Percent of List	<b>100.8%</b>	99.9%	0.9%	<b>100.2%</b>	99.1%	1.1%
	Percent of Original	<b>99.7%</b>	100.9%	-1.2%	<b>99.4%</b>	97.8%	1.6%
Median	Sale Price	<b>265,000</b>	272,450	-2.7%	<b>270,000</b>	249,450	8.2%
	Days on Market	<b>15</b>	10	50.0%	<b>10</b>	21	-52.4%
	Percent of List	<b>100.0%</b>	100.0%	0.0%	<b>100.0%</b>	99.7%	0.3%
	Percent of Original	<b>100.0%</b>	100.0%	0.0%	<b>100.0%</b>	99.0%	1.0%

A total of 38 homes sold in Pottawatomie County in November, up from 24 units in November 2020. Total sales volume rose to \$10.6 million compared to \$7.1 million in the previous year.

The median sales price in November was \$265,000, down 2.7% compared to the prior year. Median days on market was 15 days, down from 16 days in October, but up from 10 in November 2020.

## History of Closed Listings

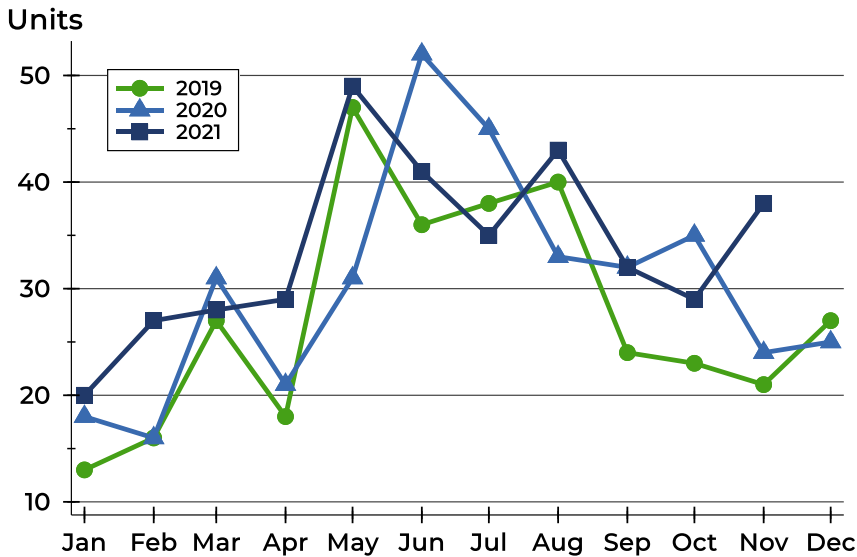
Units





## Pottawatomie County Closed Listings Analysis

### Closed Listings by Month



Month	2019	2020	2021
January	13	18	20
February	16	16	27
March	27	31	28
April	18	21	29
May	47	31	49
June	36	52	41
July	38	45	35
August	40	33	43
September	24	32	32
October	23	35	29
November	21	24	38
December	27	25	

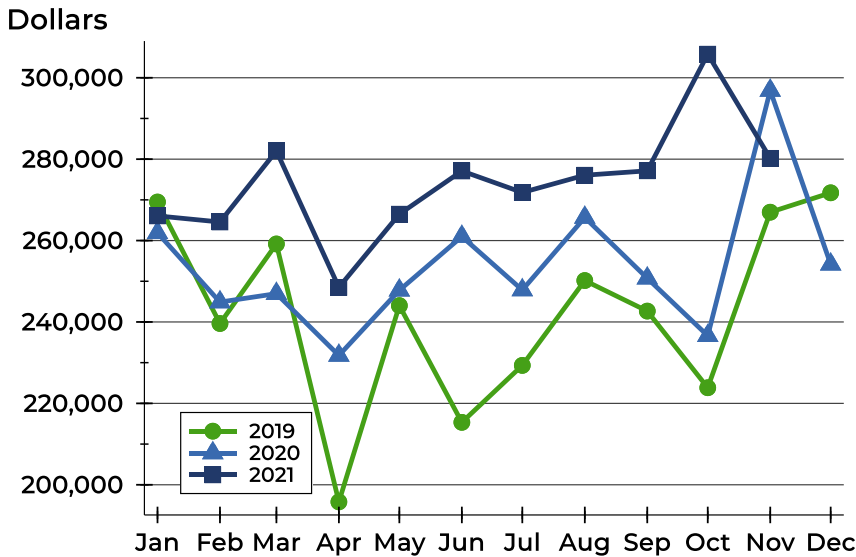
### Closed Listings by Price Range

Price Range	Sales		Months' Supply	Sale Price		Days on Market		Price as % of List		Price as % of Orig.	
	Number	Percent		Average	Median	Avg.	Med.	Avg.	Med.	Avg.	Med.
Below \$25,000	0	0.0%	N/A	N/A	N/A	N/A	N/A	N/A	N/A	N/A	N/A
\$25,000-\$49,999	0	0.0%	N/A	N/A	N/A	N/A	N/A	N/A	N/A	N/A	N/A
\$50,000-\$99,999	0	0.0%	N/A	N/A	N/A	N/A	N/A	N/A	N/A	N/A	N/A
\$100,000-\$124,999	1	2.6%	1.2	118,000	118,000	99	99	98.3%	98.3%	87.4%	87.4%
\$125,000-\$149,999	0	0.0%	N/A	N/A	N/A	N/A	N/A	N/A	N/A	N/A	N/A
\$150,000-\$174,999	1	2.6%	2.5	150,000	150,000	83	83	96.8%	96.8%	88.2%	88.2%
\$175,000-\$199,999	4	10.5%	0.0	185,000	183,500	10	9	99.7%	100.0%	99.7%	100.0%
\$200,000-\$249,999	10	26.3%	1.2	224,300	225,000	28	9	100.2%	100.0%	99.5%	100.0%
\$250,000-\$299,999	6	15.8%	0.6	270,817	265,000	44	44	100.1%	100.0%	98.3%	100.9%
\$300,000-\$399,999	13	34.2%	2.0	340,706	329,000	36	15	99.9%	100.0%	99.4%	100.0%
\$400,000-\$499,999	3	7.9%	1.3	447,667	444,000	7	3	111.5%	114.6%	111.5%	114.6%
\$500,000-\$749,999	0	0.0%	N/A	N/A	N/A	N/A	N/A	N/A	N/A	N/A	N/A
\$750,000-\$999,999	0	0.0%	N/A	N/A	N/A	N/A	N/A	N/A	N/A	N/A	N/A
\$1,000,000 and up	0	0.0%	N/A	N/A	N/A	N/A	N/A	N/A	N/A	N/A	N/A



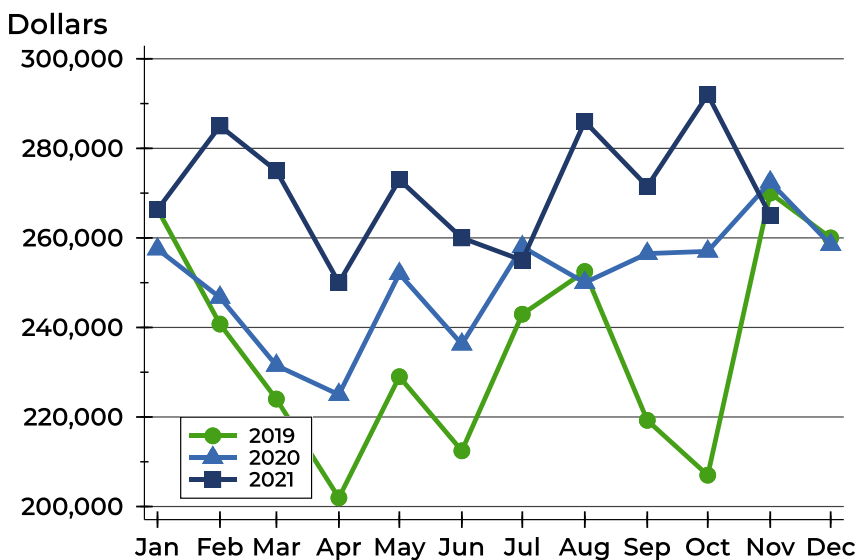
## Pottawatomie County Closed Listings Analysis

### Average Price



Month	2019	2020	2021
<b>January</b>	269,469	261,903	<b>266,064</b>
<b>February</b>	239,622	244,894	<b>264,562</b>
<b>March</b>	259,167	246,959	<b>282,018</b>
<b>April</b>	195,802	231,776	<b>248,504</b>
<b>May</b>	244,023	247,790	<b>266,490</b>
<b>June</b>	215,347	260,992	<b>277,099</b>
<b>July</b>	229,337	247,853	<b>271,821</b>
<b>August</b>	250,183	265,671	<b>276,057</b>
<b>September</b>	242,679	250,749	<b>277,140</b>
<b>October</b>	223,845	236,625	<b>305,802</b>
<b>November</b>	266,971	296,878	<b>280,213</b>
<b>December</b>	271,739	254,176	-

### Median Price

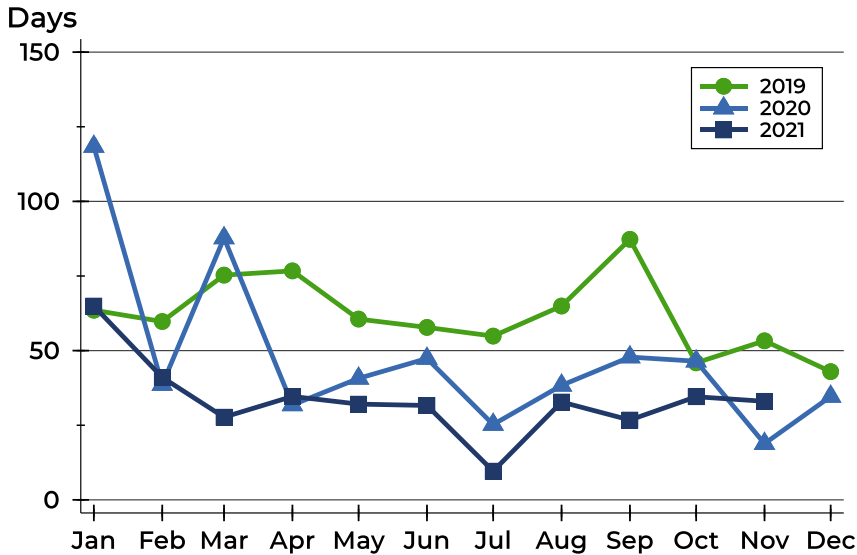


Month	2019	2020	2021
<b>January</b>	266,403	257,500	<b>266,314</b>
<b>February</b>	240,750	246,700	<b>285,000</b>
<b>March</b>	224,000	231,500	<b>275,000</b>
<b>April</b>	201,950	225,000	<b>250,000</b>
<b>May</b>	229,000	252,000	<b>273,000</b>
<b>June</b>	212,450	236,250	<b>260,000</b>
<b>July</b>	242,950	258,000	<b>255,000</b>
<b>August</b>	252,500	250,000	<b>286,000</b>
<b>September</b>	219,250	256,500	<b>271,500</b>
<b>October</b>	207,000	257,000	<b>292,000</b>
<b>November</b>	270,000	272,450	<b>265,000</b>
<b>December</b>	260,000	258,500	-



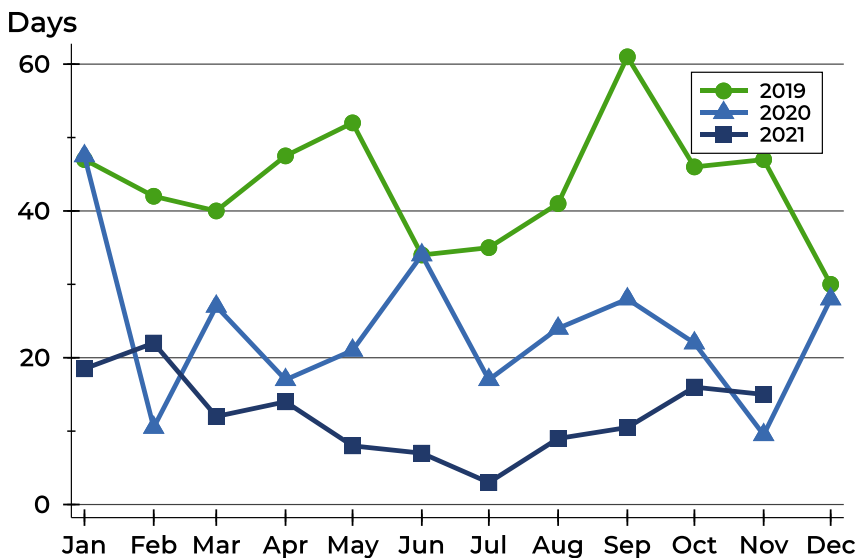
## Pottawatomie County Closed Listings Analysis

### Average DOM



Month	2019	2020	2021
January	64	118	65
February	60	39	41
March	75	88	28
April	77	32	35
May	61	41	32
June	58	47	32
July	55	25	10
August	65	38	33
September	87	48	27
October	46	46	35
November	53	19	33
December	43	35	

### Median DOM



Month	2019	2020	2021
January	47	48	19
February	42	11	22
March	40	27	12
April	48	17	14
May	52	21	8
June	34	34	7
July	35	17	3
August	41	24	9
September	61	28	11
October	46	22	16
November	47	10	15
December	30	28	



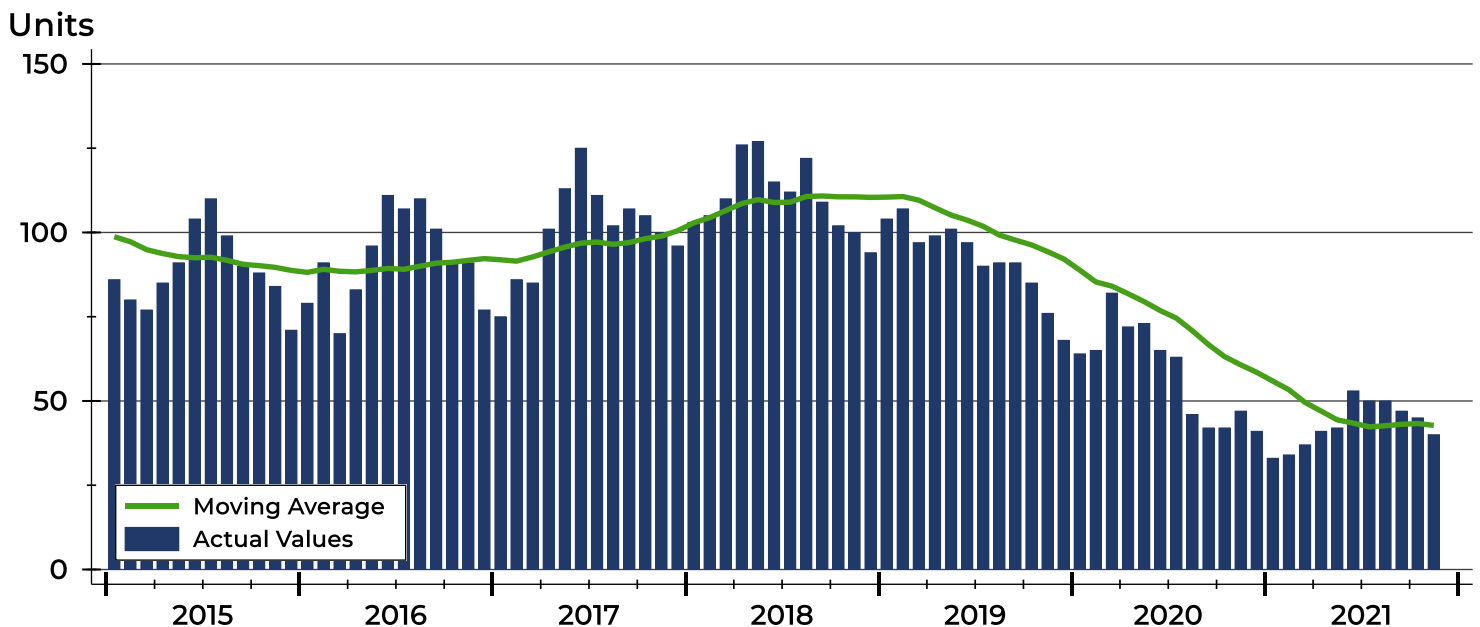
## Pottawatomie County Active Listings Analysis

Summary Statistics for Active Listings		2021	End of November 2020	Change
Active Listings		<b>40</b>	47	-14.9%
Volume (1,000s)		<b>11,963</b>	13,059	-8.4%
Months' Supply		<b>1.2</b>	1.5	-20.0%
Average	List Price	<b>299,078</b>	277,857	7.6%
	Days on Market	<b>69</b>	79	-12.7%
	Percent of Original	<b>98.9%</b>	97.9%	1.0%
Median	List Price	<b>312,450</b>	295,000	5.9%
	Days on Market	<b>45</b>	49	-8.2%
	Percent of Original	<b>100.0%</b>	100.0%	0.0%

A total of 40 homes were available for sale in Pottawatomie County at the end of November. This represents a 1.2 months' supply of active listings.

The median list price of homes on the market at the end of November was \$312,450, up 5.9% from 2020. The typical time on market for active listings was 45 days, down from 49 days a year earlier.

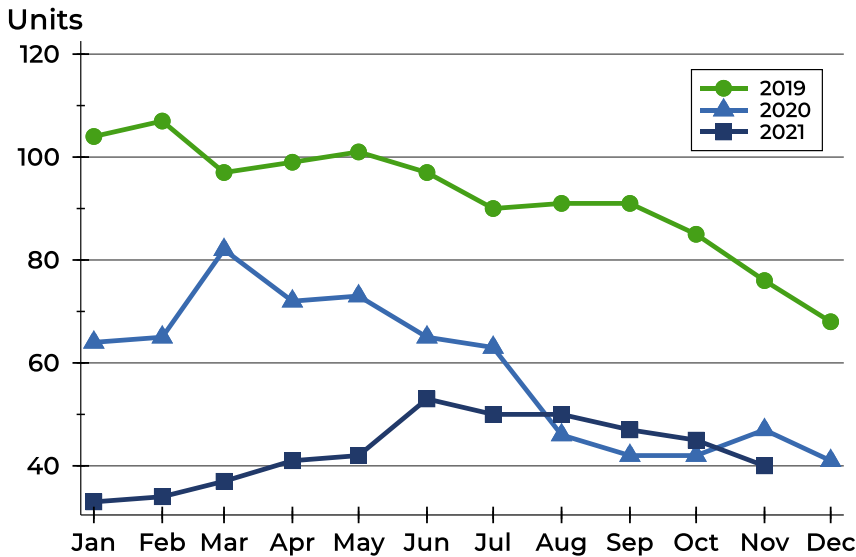
## History of Active Listings





## Pottawatomie County Active Listings Analysis

### Active Listings by Month



Month	2019	2020	2021
<b>January</b>	104	64	<b>33</b>
<b>February</b>	107	65	<b>34</b>
<b>March</b>	97	82	<b>37</b>
<b>April</b>	99	72	<b>41</b>
<b>May</b>	101	73	<b>42</b>
<b>June</b>	97	65	<b>53</b>
<b>July</b>	90	63	<b>50</b>
<b>August</b>	91	46	<b>50</b>
<b>September</b>	91	42	<b>47</b>
<b>October</b>	85	42	<b>45</b>
<b>November</b>	76	47	<b>40</b>
<b>December</b>	68	41	

### Active Listings by Price Range

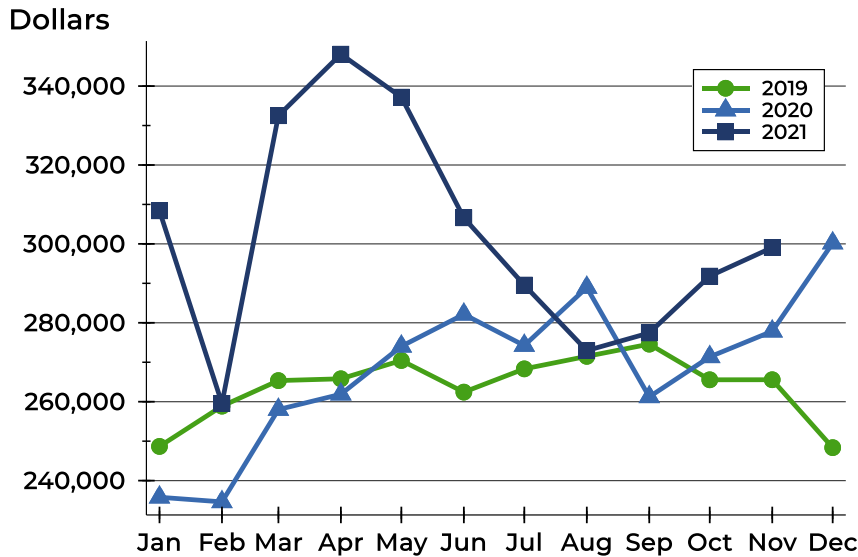
Price Range	Active Listings		Months' Supply	List Price		Days on Market		Price as % of Orig.	
	Number	Percent		Average	Median	Avg.	Med.	Avg.	Med.
Below \$25,000	0	0.0%	N/A	N/A	N/A	N/A	N/A	N/A	N/A
\$25,000-\$49,999	0	0.0%	N/A	N/A	N/A	N/A	N/A	N/A	N/A
\$50,000-\$99,999	0	0.0%	N/A	N/A	N/A	N/A	N/A	N/A	N/A
\$100,000-\$124,999	1	2.5%	1.2	110,000	110,000	159	159	91.7%	91.7%
\$125,000-\$149,999	2	5.0%	N/A	130,000	130,000	41	41	100.0%	100.0%
\$150,000-\$174,999	5	12.5%	2.5	157,560	150,000	64	61	98.8%	100.0%
\$175,000-\$199,999	0	0.0%	0.0	N/A	N/A	N/A	N/A	N/A	N/A
\$200,000-\$249,999	7	17.5%	1.2	230,771	239,000	68	35	100.0%	100.0%
\$250,000-\$299,999	4	10.0%	0.6	287,450	287,450	26	28	98.3%	100.0%
\$300,000-\$399,999	17	42.5%	2.0	364,429	370,000	80	61	98.8%	100.0%
\$400,000-\$499,999	3	7.5%	1.3	431,633	415,000	36	27	100.0%	100.0%
\$500,000-\$749,999	1	2.5%	N/A	549,900	549,900	146	146	100.0%	100.0%
\$750,000-\$999,999	0	0.0%	N/A	N/A	N/A	N/A	N/A	N/A	N/A
\$1,000,000 and up	0	0.0%	N/A	N/A	N/A	N/A	N/A	N/A	N/A





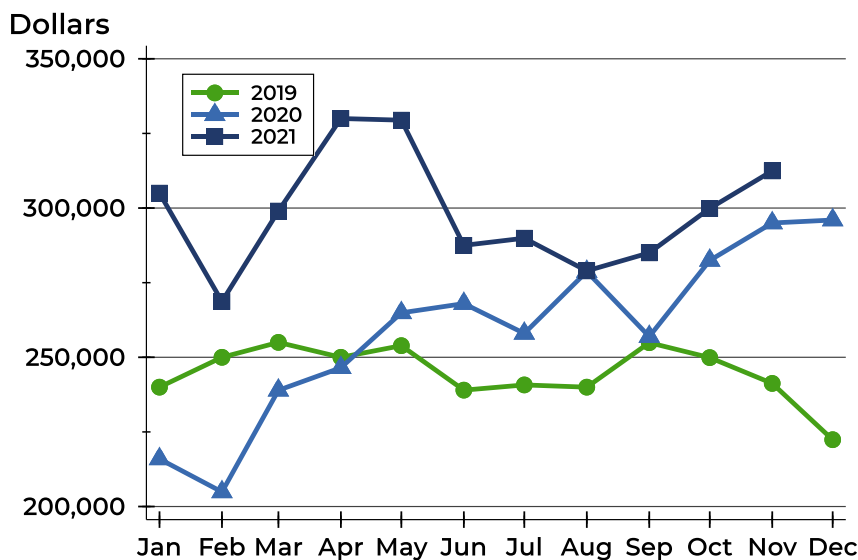
## Pottawatomie County Active Listings Analysis

### Average Price



Month	2019	2020	2021
January	248,669	235,787	<b>308,385</b>
February	258,874	234,610	<b>259,565</b>
March	265,351	258,014	<b>332,489</b>
April	265,807	261,901	<b>348,095</b>
May	270,449	274,036	<b>337,200</b>
June	262,429	282,150	<b>306,614</b>
July	268,322	274,238	<b>289,574</b>
August	271,501	288,946	<b>272,958</b>
September	274,589	261,224	<b>277,430</b>
October	265,558	271,369	<b>291,840</b>
November	265,572	277,857	<b>299,078</b>
December	248,359	300,205	

### Median Price

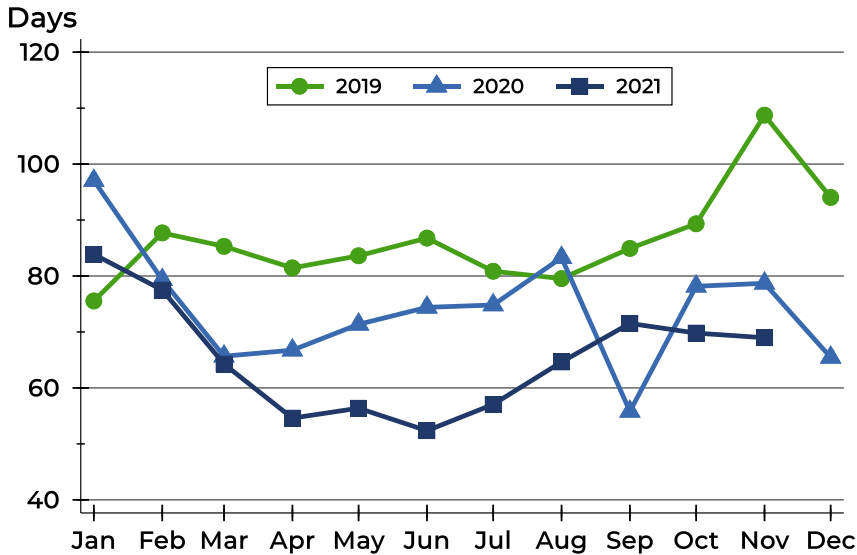


Month	2019	2020	2021
January	240,000	215,950	<b>305,000</b>
February	250,000	204,900	<b>268,700</b>
March	255,000	238,950	<b>299,000</b>
April	250,000	246,500	<b>330,000</b>
May	253,900	264,900	<b>329,450</b>
June	239,000	268,000	<b>287,500</b>
July	240,750	258,000	<b>289,900</b>
August	240,000	278,725	<b>278,950</b>
September	254,900	256,950	<b>285,000</b>
October	249,900	282,450	<b>299,900</b>
November	241,250	295,000	<b>312,450</b>
December	222,400	296,000	



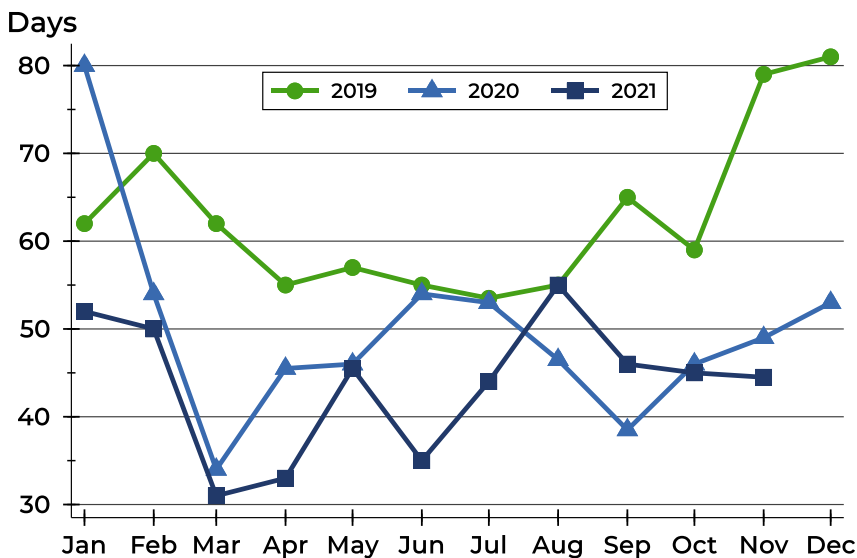
## Pottawatomie County Active Listings Analysis

### Average DOM



Month	2019	2020	2021
January	76	97	<b>84</b>
February	88	79	<b>78</b>
March	85	66	<b>64</b>
April	81	67	<b>55</b>
May	84	71	<b>56</b>
June	87	74	<b>52</b>
July	81	75	<b>57</b>
August	80	83	<b>65</b>
September	85	56	<b>72</b>
October	89	78	<b>70</b>
November	109	79	<b>69</b>
December	94	65	

### Median DOM

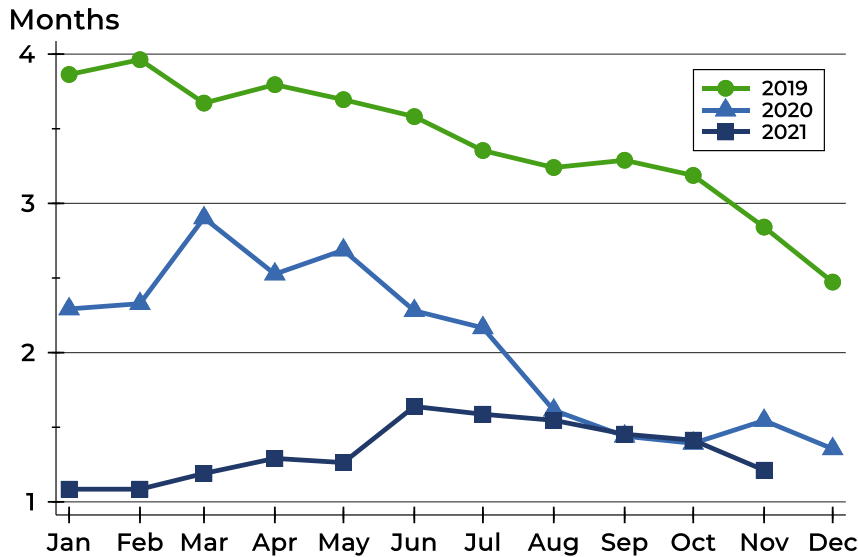


Month	2019	2020	2021
January	62	80	<b>52</b>
February	70	54	<b>50</b>
March	62	34	<b>31</b>
April	55	46	<b>33</b>
May	57	46	<b>46</b>
June	55	54	<b>35</b>
July	54	53	<b>44</b>
August	55	47	<b>55</b>
September	65	39	<b>46</b>
October	59	46	<b>45</b>
November	79	49	<b>45</b>
December	81	53	



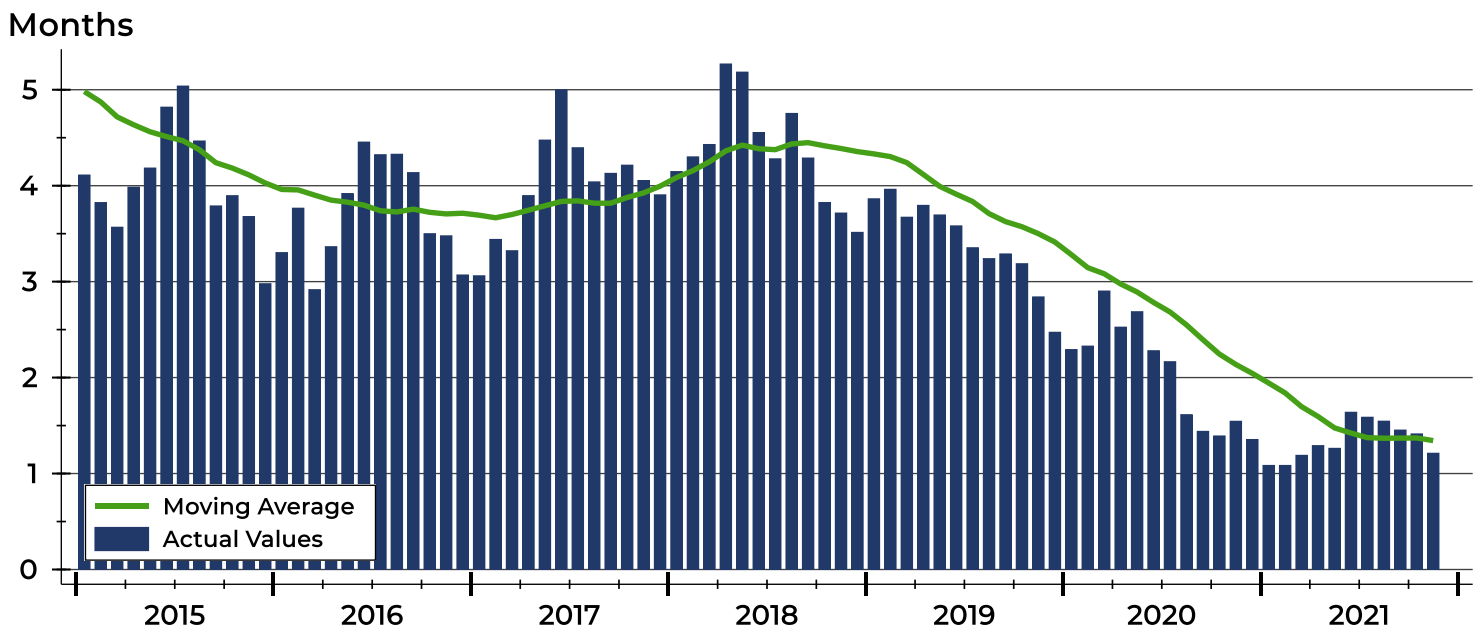
## Pottawatomie County Months' Supply Analysis

### Months' Supply by Month



Month	2019	2020	2021
January	3.9	2.3	1.1
February	4.0	2.3	1.1
March	3.7	2.9	1.2
April	3.8	2.5	1.3
May	3.7	2.7	1.3
June	3.6	2.3	1.6
July	3.4	2.2	1.6
August	3.2	1.6	1.5
September	3.3	1.4	1.5
October	3.2	1.4	1.4
November	2.8	1.5	1.2
December	2.5	1.4	1.2

### History of Month's Supply





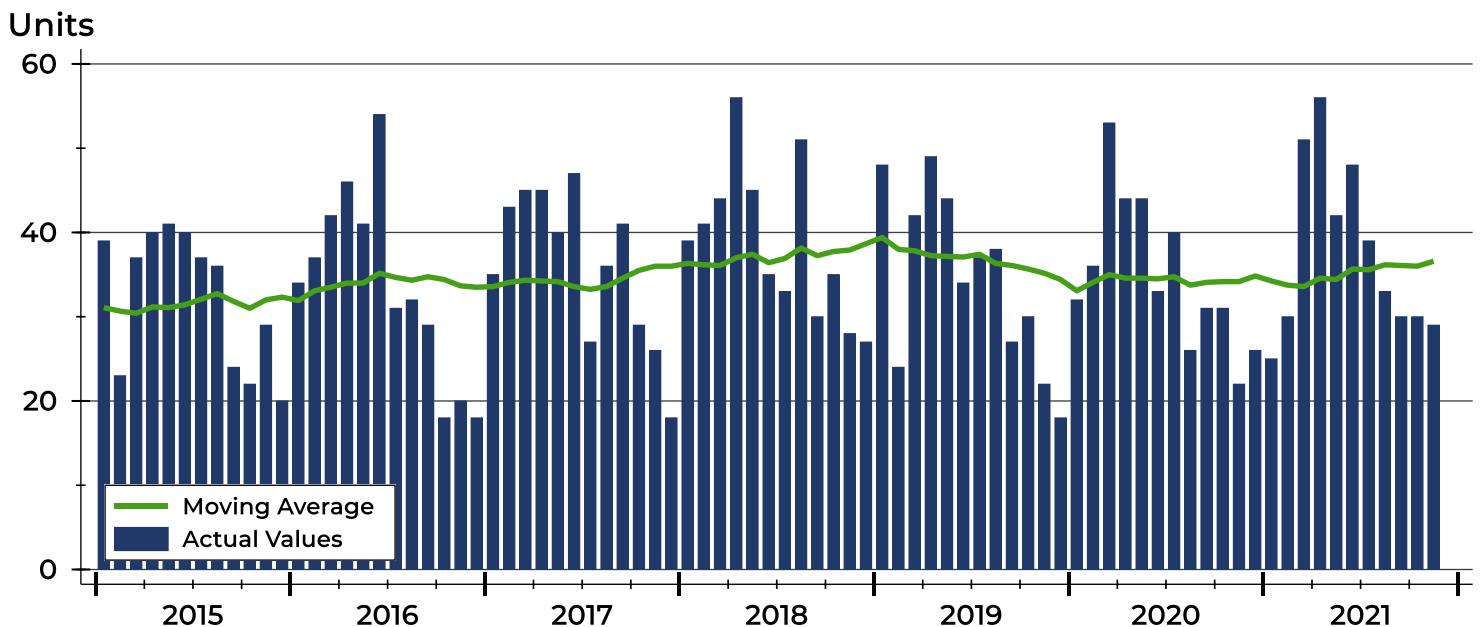
## Pottawatomie County New Listings Analysis

Summary Statistics for New Listings		2021	November 2020	Change
Current Month	New Listings	<b>29</b>	22	31.8%
	Volume (1,000s)	<b>8,754</b>	6,406	36.7%
	Average List Price	<b>301,862</b>	291,191	3.7%
	Median List Price	<b>295,000</b>	280,635	5.1%
Year-to-Date	New Listings	<b>413</b>	392	5.4%
	Volume (1,000s)	<b>116,594</b>	103,387	12.8%
	Average List Price	<b>282,309</b>	263,742	7.0%
	Median List Price	<b>275,000</b>	257,250	6.9%

A total of 29 new listings were added in Pottawatomie County during November, up 31.8% from the same month in 2020. Year-to-date Pottawatomie County has seen 413 new listings.

The median list price of these homes was \$295,000 up from \$280,635 in 2020.

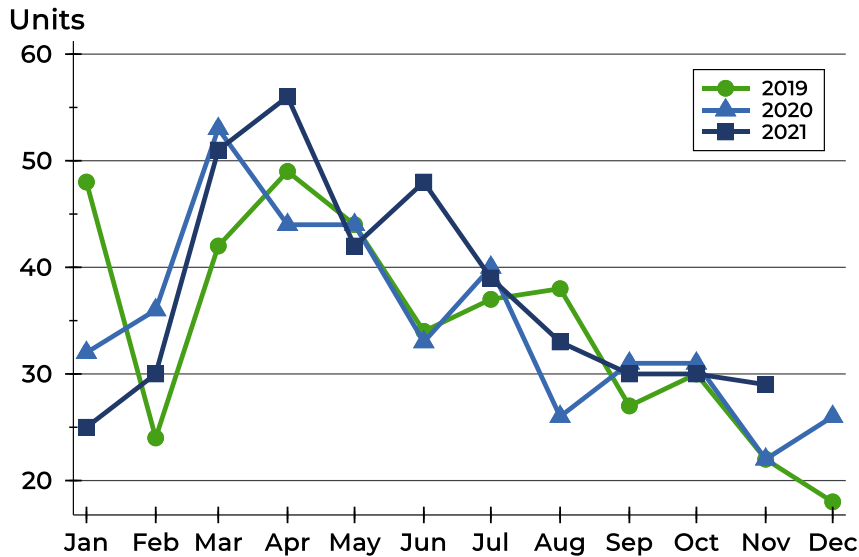
## History of New Listings





## Pottawatomie County New Listings Analysis

### New Listings by Month



Month	2019	2020	2021
January	48	32	25
February	24	36	30
March	42	53	51
April	49	44	56
May	44	44	42
June	34	33	48
July	37	40	39
August	38	26	33
September	27	31	30
October	30	31	30
November	22	22	29
December	18	26	

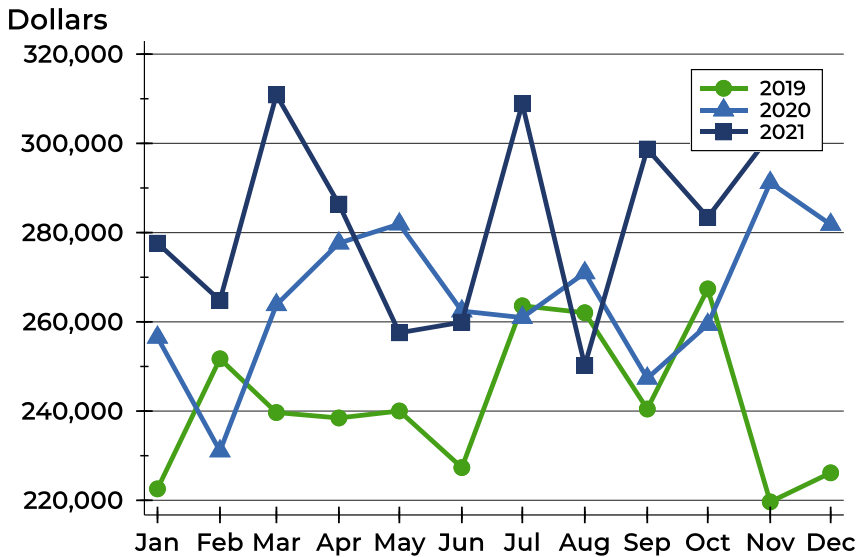
### New Listings by Price Range

Price Range	New Listings		List Price		Days on Market		Price as % of Orig.	
	Number	Percent	Average	Median	Avg.	Med.	Avg.	Med.
Below \$25,000	0	0.0%	N/A	N/A	N/A	N/A	N/A	N/A
\$25,000-\$49,999	0	0.0%	N/A	N/A	N/A	N/A	N/A	N/A
\$50,000-\$99,999	0	0.0%	N/A	N/A	N/A	N/A	N/A	N/A
\$100,000-\$124,999	0	0.0%	N/A	N/A	N/A	N/A	N/A	N/A
\$125,000-\$149,999	1	3.4%	135,000	135,000	1	1	100.0%	100.0%
\$150,000-\$174,999	1	3.4%	150,000	150,000	27	27	100.0%	100.0%
\$175,000-\$199,999	0	0.0%	N/A	N/A	N/A	N/A	N/A	N/A
\$200,000-\$249,999	5	17.2%	241,200	240,000	14	15	100.0%	100.0%
\$250,000-\$299,999	10	34.5%	280,140	281,750	6	4	100.0%	100.0%
\$300,000-\$399,999	9	31.0%	359,633	362,000	15	7	99.8%	100.0%
\$400,000-\$499,999	3	10.3%	408,300	405,000	28	30	100.0%	100.0%
\$500,000-\$749,999	0	0.0%	N/A	N/A	N/A	N/A	N/A	N/A
\$750,000-\$999,999	0	0.0%	N/A	N/A	N/A	N/A	N/A	N/A
\$1,000,000 and up	0	0.0%	N/A	N/A	N/A	N/A	N/A	N/A



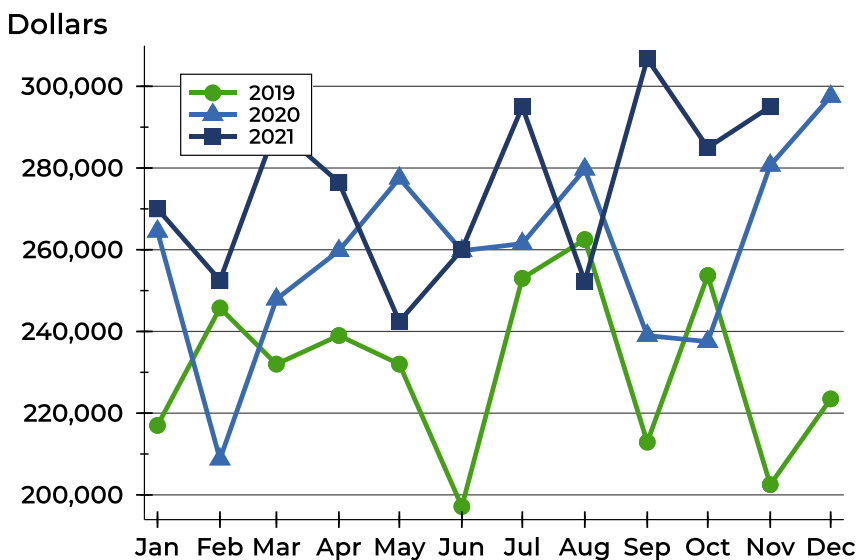
## Pottawatomie County New Listings Analysis

### Average Price



Month	2019	2020	2021
January	222,566	256,523	<b>277,640</b>
February	251,719	231,047	<b>264,803</b>
March	239,671	263,816	<b>310,863</b>
April	238,453	277,634	<b>286,386</b>
May	240,025	281,910	<b>257,544</b>
June	227,338	262,417	<b>259,931</b>
July	263,600	260,954	<b>308,895</b>
August	262,045	270,965	<b>250,224</b>
September	240,467	247,342	<b>298,736</b>
October	267,382	259,397	<b>283,437</b>
November	219,650	291,191	<b>301,862</b>
December	226,161	281,819	

### Median Price



Month	2019	2020	2021
January	217,000	264,500	<b>270,000</b>
February	245,750	208,750	<b>252,500</b>
March	232,000	247,900	<b>289,900</b>
April	239,000	259,750	<b>276,500</b>
May	232,000	277,500	<b>242,450</b>
June	197,150	259,750	<b>260,000</b>
July	253,000	261,500	<b>295,000</b>
August	262,500	279,700	<b>252,250</b>
September	212,900	239,000	<b>306,725</b>
October	253,700	237,500	<b>285,000</b>
November	202,500	280,635	<b>295,000</b>
December	223,500	297,500	



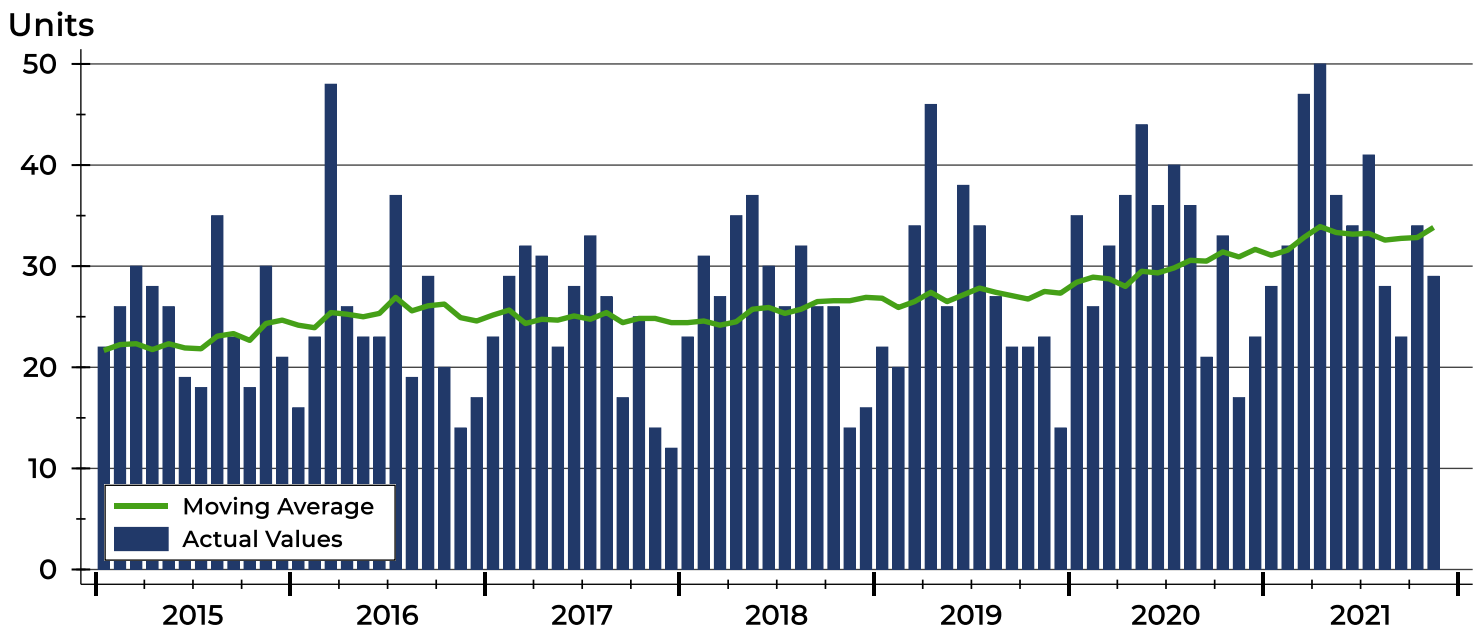
## Pottawatomie County Contracts Written Analysis

Summary Statistics for Contracts Written		November			Year-to-Date		
		2021	2020	Change	2021	2020	Change
Contracts Written		<b>29</b>	17	70.6%	<b>383</b>	357	7.3%
Volume (1,000s)		<b>8,236</b>	4,669	76.4%	<b>104,972</b>	91,776	14.4%
Average	Sale Price	<b>284,003</b>	274,623	3.4%	<b>274,078</b>	257,076	6.6%
	Days on Market	<b>32</b>	56	-42.9%	<b>31</b>	44	-29.5%
	Percent of Original	<b>98.0%</b>	96.5%	1.6%	<b>99.5%</b>	97.7%	1.8%
Median	Sale Price	<b>270,000</b>	265,000	1.9%	<b>270,000</b>	253,900	6.3%
	Days on Market	<b>19</b>	14	35.7%	<b>10</b>	21	-52.4%
	Percent of Original	<b>100.0%</b>	100.0%	0.0%	<b>100.0%</b>	99.1%	0.9%

A total of 29 contracts for sale were written in Pottawatomie County during the month of November, up from 17 in 2020. The median list price of these homes was \$270,000, up from \$265,000 the prior year.

Half of the homes that went under contract in November were on the market less than 19 days, compared to 14 days in November 2020.

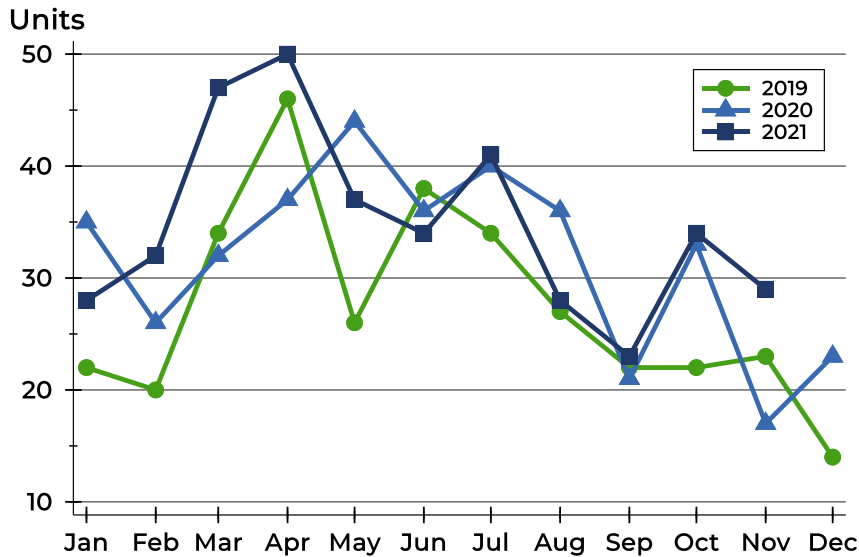
## History of Contracts Written





## Pottawatomie County Contracts Written Analysis

### Contracts Written by Month



Month	2019	2020	2021
January	22	35	28
February	20	26	32
March	34	32	47
April	46	37	50
May	26	44	37
June	38	36	34
July	34	40	41
August	27	36	28
September	22	21	23
October	22	33	34
November	23	17	29
December	14	23	

### Contracts Written by Price Range

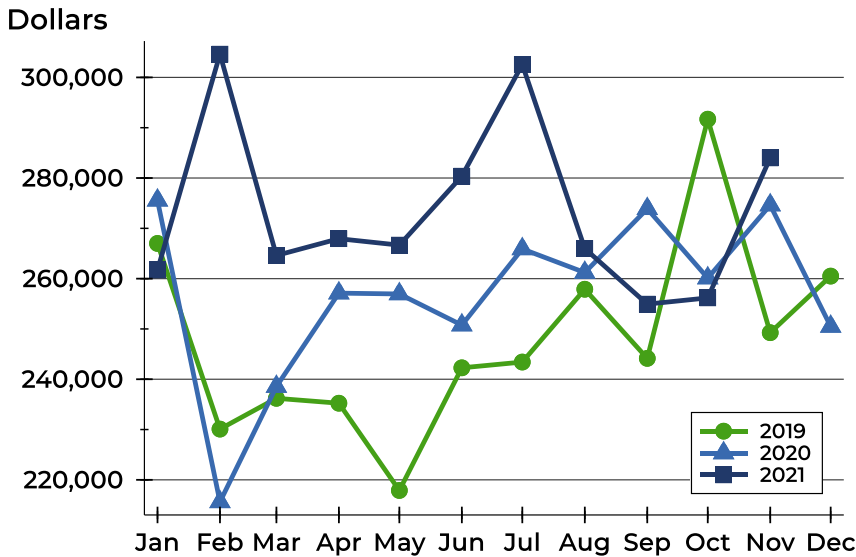
Price Range	Contracts Written		List Price		Days on Market		Price as % of Orig.	
	Number	Percent	Average	Median	Avg.	Med.	Avg.	Med.
Below \$25,000	0	0.0%	N/A	N/A	N/A	N/A	N/A	N/A
\$25,000-\$49,999	0	0.0%	N/A	N/A	N/A	N/A	N/A	N/A
\$50,000-\$99,999	0	0.0%	N/A	N/A	N/A	N/A	N/A	N/A
\$100,000-\$124,999	0	0.0%	N/A	N/A	N/A	N/A	N/A	N/A
\$125,000-\$149,999	1	3.4%	135,000	135,000	1	1	100.0%	100.0%
\$150,000-\$174,999	1	3.4%	156,000	156,000	166	166	89.1%	89.1%
\$175,000-\$199,999	5	17.2%	192,380	199,000	55	48	94.9%	95.4%
\$200,000-\$249,999	4	13.8%	228,125	236,250	16	13	98.0%	98.5%
\$250,000-\$299,999	8	27.6%	276,488	275,500	26	2	98.9%	100.0%
\$300,000-\$399,999	7	24.1%	346,400	345,000	15	7	99.9%	100.0%
\$400,000-\$499,999	2	6.9%	405,000	405,000	37	37	99.5%	99.5%
\$500,000-\$749,999	1	3.4%	624,000	624,000	45	45	96.1%	96.1%
\$750,000-\$999,999	0	0.0%	N/A	N/A	N/A	N/A	N/A	N/A
\$1,000,000 and up	0	0.0%	N/A	N/A	N/A	N/A	N/A	N/A





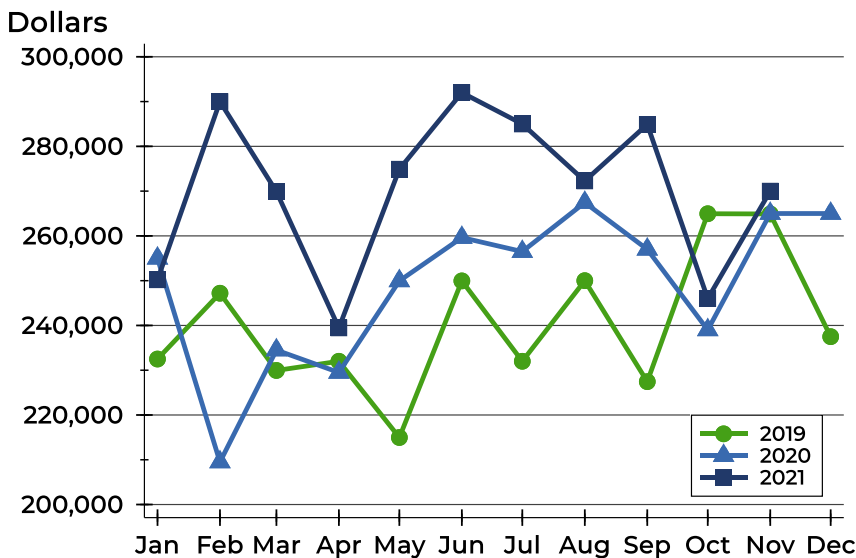
## Pottawatomie County Contracts Written Analysis

### Average Price



Month	2019	2020	2021
January	266,998	275,577	<b>261,718</b>
February	230,090	215,623	<b>304,628</b>
March	236,215	238,542	<b>264,610</b>
April	235,235	257,123	<b>267,945</b>
May	217,892	256,959	<b>266,667</b>
June	242,275	250,765	<b>280,366</b>
July	243,422	265,908	<b>302,572</b>
August	257,893	261,211	<b>265,977</b>
September	244,155	273,890	<b>254,934</b>
October	291,700	260,115	<b>256,179</b>
November	249,259	274,623	<b>284,003</b>
December	260,507	250,496	

### Median Price

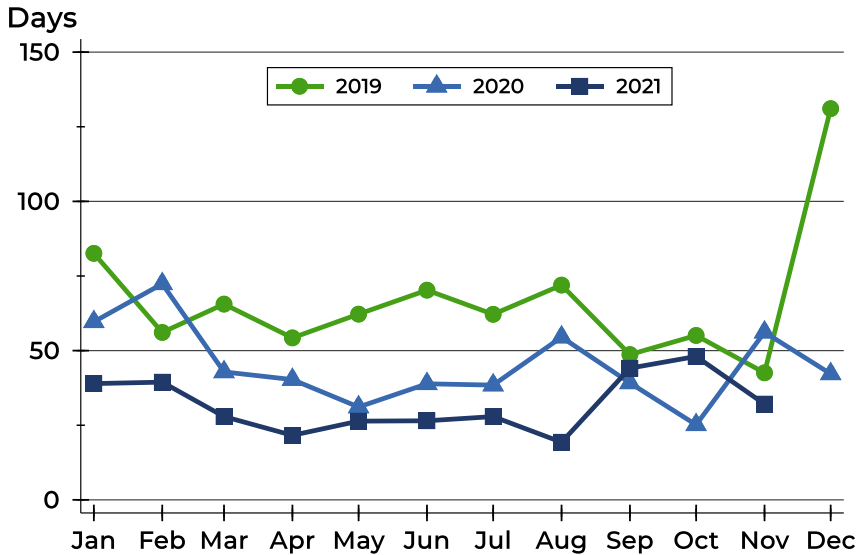


Month	2019	2020	2021
January	232,500	255,000	<b>250,200</b>
February	247,200	209,500	<b>290,000</b>
March	229,950	234,500	<b>269,900</b>
April	232,000	229,500	<b>239,450</b>
May	214,975	249,945	<b>274,900</b>
June	249,950	259,625	<b>292,000</b>
July	232,000	256,500	<b>285,000</b>
August	250,000	267,450	<b>272,280</b>
September	227,450	257,000	<b>284,900</b>
October	264,950	239,000	<b>246,000</b>
November	264,900	265,000	<b>270,000</b>
December	237,500	265,000	



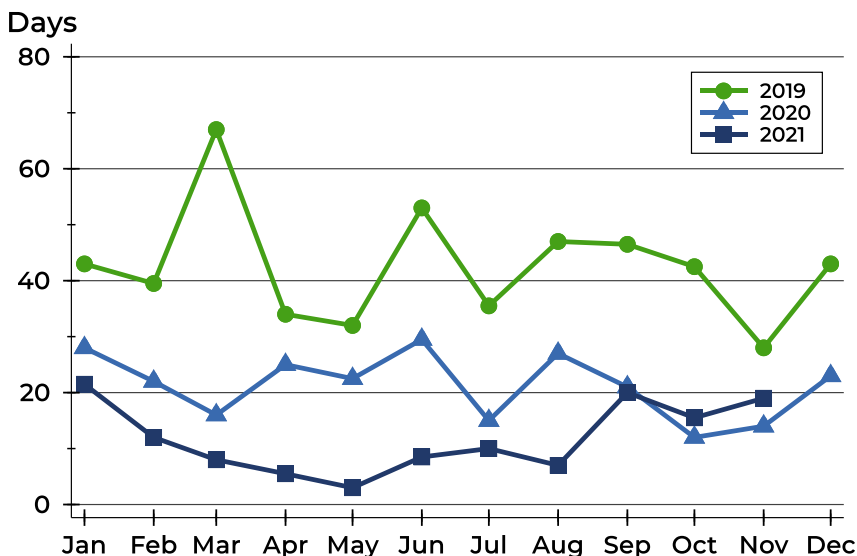
## Pottawatomie County Contracts Written Analysis

### Average DOM



Month	2019	2020	2021
January	83	60	39
February	56	72	39
March	66	43	28
April	54	40	22
May	62	31	26
June	70	39	27
July	62	38	28
August	72	55	19
September	49	39	44
October	55	25	48
November	43	56	32
December	131	42	

### Median DOM



Month	2019	2020	2021
January	43	28	22
February	40	22	12
March	67	16	8
April	34	25	6
May	32	23	3
June	53	30	9
July	36	15	10
August	47	27	7
September	47	21	20
October	43	12	16
November	28	14	19
December	43	23	



## Pottawatomie County Pending Contracts Analysis

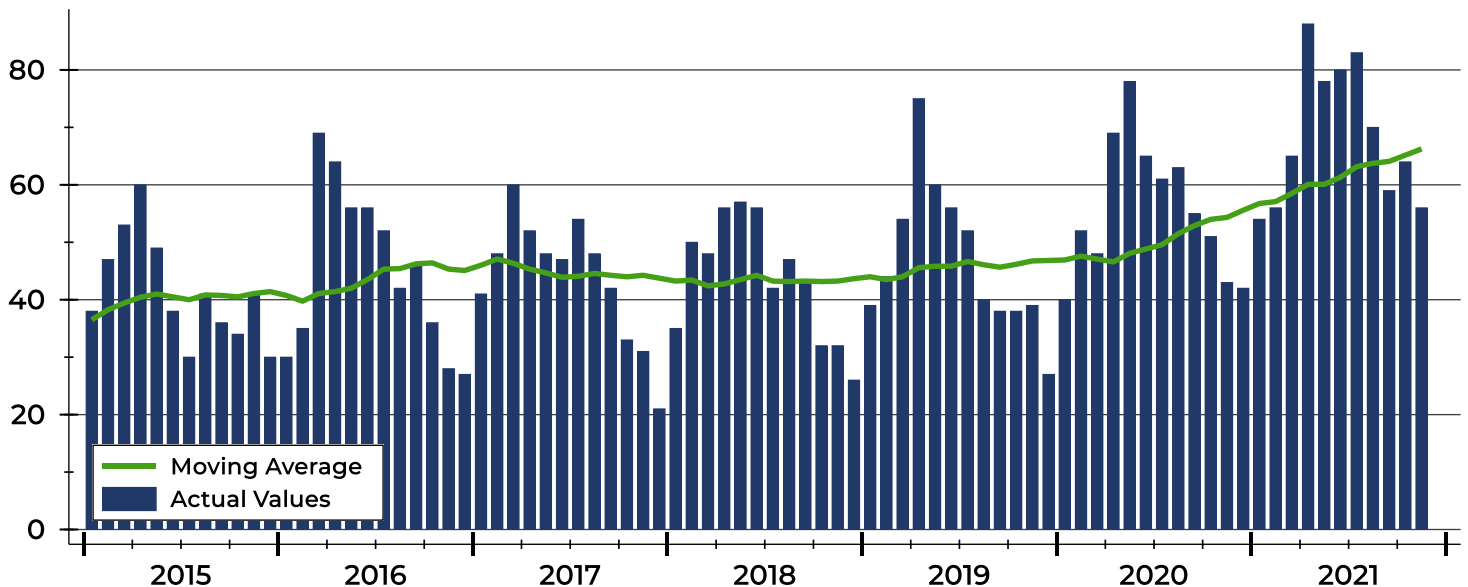
Summary Statistics for Pending Contracts		End of November		
		2021	2020	Change
Pending Contracts		<b>56</b>	43	30.2%
Volume (1,000s)		<b>15,272</b>	10,658	43.3%
Average	List Price	<b>272,718</b>	247,860	10.0%
	Days on Market	<b>46</b>	38	21.1%
	Percent of Original	<b>99.3%</b>	99.4%	-0.1%
Median	List Price	<b>281,750</b>	250,000	12.7%
	Days on Market	<b>17</b>	23	-26.1%
	Percent of Original	<b>100.0%</b>	100.0%	0.0%

A total of 56 listings in Pottawatomie County had contracts pending at the end of November, up from 43 contracts pending at the end of November 2020.

Pending contracts reflect listings with a contract in place at the end of the month. In contrast, contracts written measures the number of listings put under contract during the month.

## History of Pending Contracts

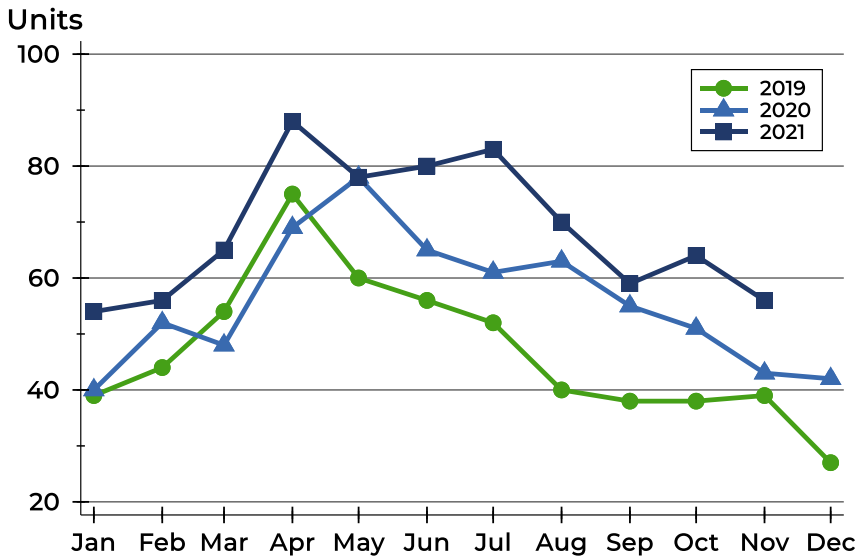
Units





## Pottawatomie County Pending Contracts Analysis

### Pending Contracts by Month



Month	2019	2020	2021
January	39	40	54
February	44	52	56
March	54	48	65
April	75	69	88
May	60	78	78
June	56	65	80
July	52	61	83
August	40	63	70
September	38	55	59
October	38	51	64
November	39	43	56
December	27	42	-

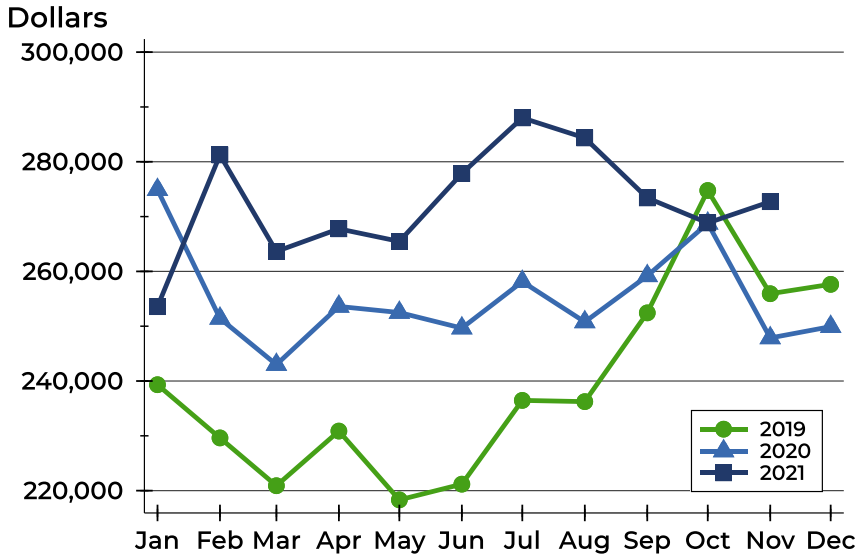
### Pending Contracts by Price Range

Price Range	Pending Contracts		List Price		Days on Market		Price as % of Orig.	
	Number	Percent	Average	Median	Avg.	Med.	Avg.	Med.
Below \$25,000	0	0.0%	N/A	N/A	N/A	N/A	N/A	N/A
\$25,000-\$49,999	1	1.8%	48,600	48,600	466	466	100.0%	100.0%
\$50,000-\$99,999	1	1.8%	75,000	75,000	15	15	100.0%	100.0%
\$100,000-\$124,999	2	3.6%	113,000	113,000	72	72	96.2%	96.2%
\$125,000-\$149,999	2	3.6%	137,450	137,450	6	6	100.0%	100.0%
\$150,000-\$174,999	2	3.6%	155,500	155,500	91	91	94.6%	94.6%
\$175,000-\$199,999	5	8.9%	192,380	199,000	55	48	94.9%	95.4%
\$200,000-\$249,999	9	16.1%	228,300	235,000	26	24	98.7%	100.0%
\$250,000-\$299,999	14	25.0%	280,724	283,750	20	3	101.7%	100.0%
\$300,000-\$399,999	16	28.6%	344,747	337,500	50	14	100.1%	100.0%
\$400,000-\$499,999	3	5.4%	416,667	405,000	42	53	99.0%	99.0%
\$500,000-\$749,999	1	1.8%	624,000	624,000	45	45	96.1%	96.1%
\$750,000-\$999,999	0	0.0%	N/A	N/A	N/A	N/A	N/A	N/A
\$1,000,000 and up	0	0.0%	N/A	N/A	N/A	N/A	N/A	N/A



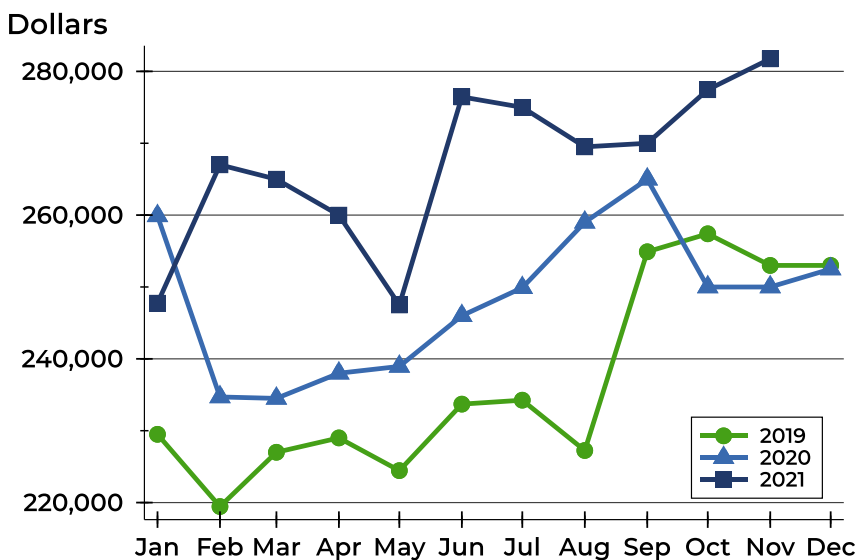
## Pottawatomie County Pending Contracts Analysis

### Average Price



Month	2019	2020	2021
January	239,327	274,908	<b>253,565</b>
February	229,622	251,427	<b>281,241</b>
March	220,896	242,995	<b>263,641</b>
April	230,873	253,607	<b>267,766</b>
May	218,317	252,496	<b>265,473</b>
June	221,186	249,649	<b>277,862</b>
July	236,469	258,138	<b>288,006</b>
August	236,240	250,781	<b>284,350</b>
September	252,437	259,189	<b>273,403</b>
October	274,761	268,773	<b>268,839</b>
November	255,927	247,860	<b>272,718</b>
December	257,641	249,923	

### Median Price

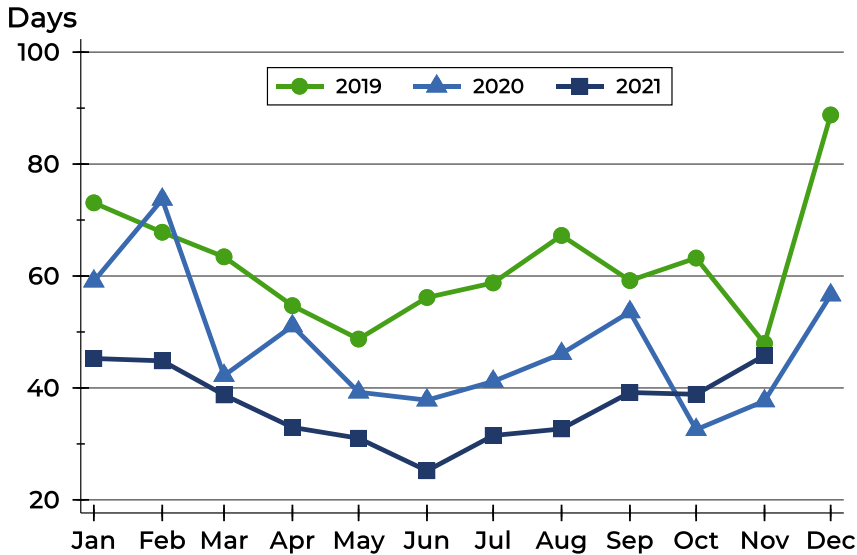


Month	2019	2020	2021
January	229,500	259,900	<b>247,750</b>
February	219,450	234,700	<b>267,000</b>
March	227,000	234,500	<b>265,000</b>
April	229,000	238,000	<b>260,000</b>
May	224,450	238,950	<b>247,500</b>
June	233,700	246,000	<b>276,450</b>
July	234,250	249,900	<b>275,000</b>
August	227,250	259,000	<b>269,500</b>
September	254,900	265,000	<b>270,000</b>
October	257,400	250,000	<b>277,450</b>
November	253,000	250,000	<b>281,750</b>
December	253,000	252,500	



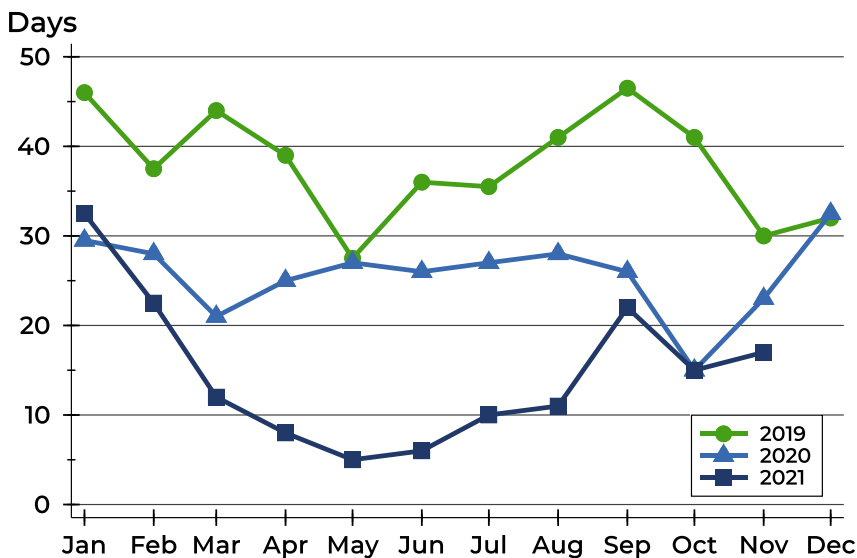
## Pottawatomie County Pending Contracts Analysis

### Average DOM



Month	2019	2020	2021
January	73	59	45
February	68	74	45
March	63	42	39
April	55	51	33
May	49	39	31
June	56	38	25
July	59	41	31
August	67	46	33
September	59	54	39
October	63	33	39
November	48	38	46
December	89	57	

### Median DOM



Month	2019	2020	2021
January	46	30	33
February	38	28	23
March	44	21	12
April	39	25	8
May	28	27	5
June	36	26	6
July	36	27	10
August	41	28	11
September	47	26	22
October	41	15	15
November	30	23	17
December	32	33	