



## **Pottawatomie County Housing Report**



### **Market Overview**

#### **Pottawatomie County Home Sales Remained Constant in September**

Total home sales in Pottawatomie County remained at 31 units last month, the same as in September 2020. Total sales volume was \$8.7 million, up from a year earlier.

The median sale price in September was \$275,000, up from \$258,000 a year earlier. Homes that sold in September were typically on the market for 11 days and sold for 100.0% of their list prices.

#### **Pottawatomie County Active Listings Up at End of September**

The total number of active listings in Pottawatomie County at the end of September was 47 units, up from 42 at the same point in 2020. This represents a 1.5 months' supply of homes available for sale. The median list price of homes on the market at the end of September was \$285,000.

During September, a total of 22 contracts were written up from 21 in September 2020. At the end of the month, there were 59 contracts pending, compared to 55 at the end of September 2020.

### **Report Contents**

- Summary Statistics – Page 2
- Closed Listing Analysis – Page 3
- Active Listings Analysis – Page 7
- Months' Supply Analysis – Page 11
- New Listings Analysis – Page 12
- Contracts Written Analysis – Page 15
- Pending Contracts Analysis – Page 19

### **Contact Information**

Margaret Pendleton, Association Executive  
 Flint Hills Association of REALTORS®  
 205 S. Seth Child Road  
 Manhattan, KS 66502  
 685-776-1211  
[ae@flinthillsrealtors.net](mailto:ae@flinthillsrealtors.net)  
[www.flinthillsrealtors.net](http://www.flinthillsrealtors.net)



## Pottawatomie County Summary Statistics

September MLS Statistics Three-year History		Current Month			Year-to-Date		
		2021	2020	2019	2021	2020	2019
<b>Home Sales</b> Change from prior year		<b>31</b> 0.0%	<b>31</b> 29.2%	<b>24</b> -17.2%	<b>301</b> 8.3%	<b>278</b> 7.3%	<b>259</b> 4.4%
<b>Active Listings</b> Change from prior year		<b>47</b> 11.9%	<b>42</b> -53.8%	<b>91</b> -16.5%	<b>N/A</b>	<b>N/A</b>	<b>N/A</b>
<b>Months' Supply</b> Change from prior year		<b>1.5</b> 7.1%	<b>1.4</b> -57.6%	<b>3.3</b> -23.3%	<b>N/A</b>	<b>N/A</b>	<b>N/A</b>
<b>New Listings</b> Change from prior year		<b>27</b> -12.9%	<b>31</b> 14.8%	<b>27</b> -10.0%	<b>347</b> 2.4%	<b>339</b> -1.2%	<b>343</b> -8.3%
<b>Contracts Written</b> Change from prior year		<b>22</b> 4.8%	<b>21</b> -4.5%	<b>22</b> -15.4%	<b>315</b> 2.6%	<b>307</b> 14.1%	<b>269</b> 0.7%
<b>Pending Contracts</b> Change from prior year		<b>59</b> 7.3%	<b>55</b> 44.7%	<b>38</b> -11.6%	<b>N/A</b>	<b>N/A</b>	<b>N/A</b>
<b>Sales Volume (1,000s)</b> Change from prior year		<b>8,700</b> 10.2%	<b>7,894</b> 35.5%	<b>5,824</b> -6.0%	<b>81,904</b> 16.6%	<b>70,223</b> 13.9%	<b>61,627</b> 5.6%
Average	<b>Sale Price</b> Change from prior year	<b>280,661</b> 10.2%	<b>254,644</b> 4.9%	<b>242,679</b> 13.6%	<b>272,107</b> 7.7%	<b>252,601</b> 6.2%	<b>237,942</b> 1.1%
	<b>List Price of Actives</b> Change from prior year	<b>277,430</b> 6.2%	<b>261,224</b> -4.9%	<b>274,589</b> 16.3%	<b>N/A</b>	<b>N/A</b>	<b>N/A</b>
	<b>Days on Market</b> Change from prior year	<b>27</b> -41.3%	<b>46</b> -47.1%	<b>87</b> 35.9%	<b>32</b> -34.7%	<b>49</b> -24.6%	<b>65</b> -5.8%
	<b>Percent of List</b> Change from prior year	<b>100.0%</b> 0.0%	<b>100.0%</b> 0.9%	<b>99.1%</b> 0.5%	<b>100.1%</b> 1.2%	<b>98.9%</b> 0.3%	<b>98.6%</b> -0.1%
	<b>Percent of Original</b> Change from prior year	<b>99.3%</b> 0.5%	<b>98.8%</b> 2.2%	<b>96.7%</b> 0.0%	<b>99.3%</b> 2.0%	<b>97.4%</b> 0.5%	<b>96.9%</b> 0.2%
Median	<b>Sale Price</b> Change from prior year	<b>275,000</b> 6.6%	<b>258,000</b> 17.7%	<b>219,250</b> 3.4%	<b>270,000</b> 9.2%	<b>247,250</b> 6.1%	<b>233,000</b> 0.7%
	<b>List Price of Actives</b> Change from prior year	<b>285,000</b> 10.9%	<b>256,950</b> 0.8%	<b>254,900</b> 10.9%	<b>N/A</b>	<b>N/A</b>	<b>N/A</b>
	<b>Days on Market</b> Change from prior year	<b>11</b> -60.7%	<b>28</b> -54.1%	<b>61</b> 32.6%	<b>8</b> -65.2%	<b>23</b> -45.2%	<b>42</b> -2.3%
	<b>Percent of List</b> Change from prior year	<b>100.0%</b> 0.0%	<b>100.0%</b> 0.6%	<b>99.4%</b> 0.9%	<b>100.0%</b> 0.4%	<b>99.6%</b> 0.6%	<b>99.0%</b> -0.5%
	<b>Percent of Original</b> Change from prior year	<b>99.4%</b> -0.5%	<b>99.9%</b> 3.7%	<b>96.3%</b> -1.9%	<b>100.0%</b> 1.1%	<b>98.9%</b> 0.9%	<b>98.0%</b> 0.2%



## Pottawatomie County Closed Listings Analysis

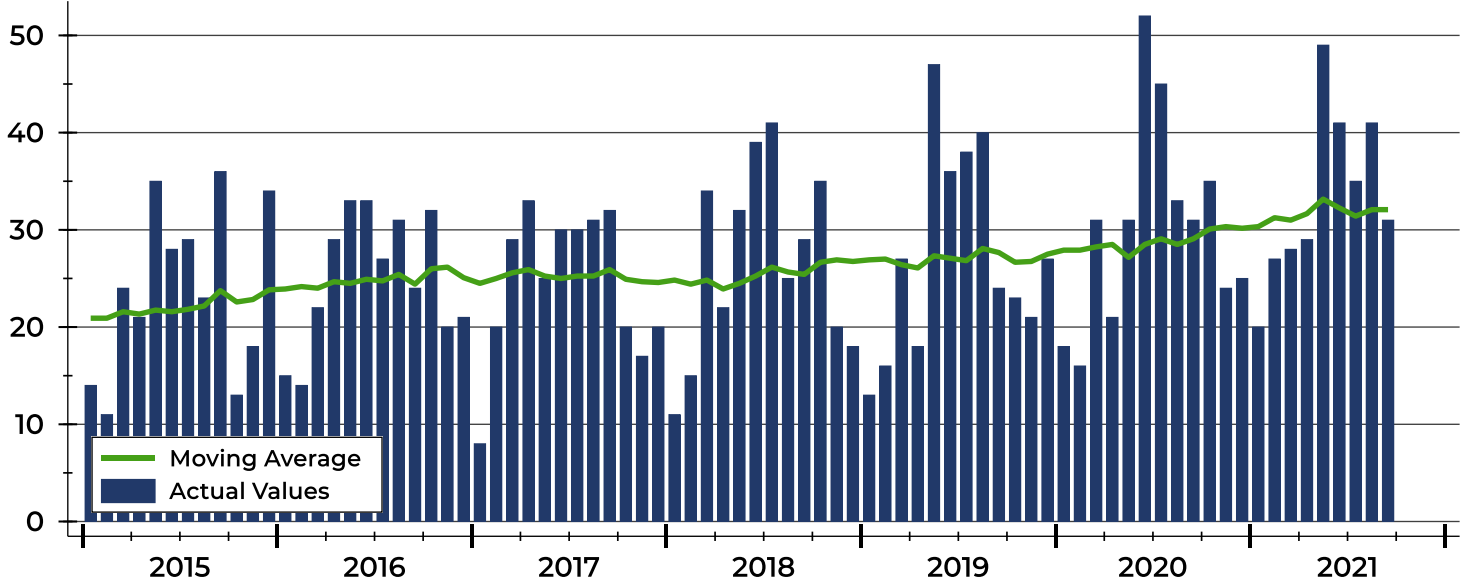
Summary Statistics for Closed Listings		September			Year-to-Date		
		2021	2020	Change	2021	2020	Change
Closed Listings		31	31	0.0%	301	278	8.3%
Volume (1,000s)		8,700	7,894	10.2%	81,904	70,223	16.6%
Months' Supply		1.5	1.4	7.1%	N/A	N/A	N/A
Average	Sale Price	280,661	254,644	10.2%	272,107	252,601	7.7%
	Days on Market	27	46	-41.3%	32	49	-34.7%
	Percent of List	100.0%	100.0%	0.0%	100.1%	98.9%	1.2%
	Percent of Original	99.3%	98.8%	0.5%	99.3%	97.4%	2.0%
Median	Sale Price	275,000	258,000	6.6%	270,000	247,250	9.2%
	Days on Market	11	28	-60.7%	8	23	-65.2%
	Percent of List	100.0%	100.0%	0.0%	100.0%	99.6%	0.4%
	Percent of Original	99.4%	99.9%	-0.5%	100.0%	98.9%	1.1%

A total of 31 homes sold in Pottawatomie County in September, showing no change from September 2020. Total sales volume rose to \$8.7 million compared to \$7.9 million in the previous year.

The median sales price in September was \$275,000, up 6.6% compared to the prior year. Median days on market was 11 days, up from 9 days in August, but down from 28 in September 2020.

## History of Closed Listings

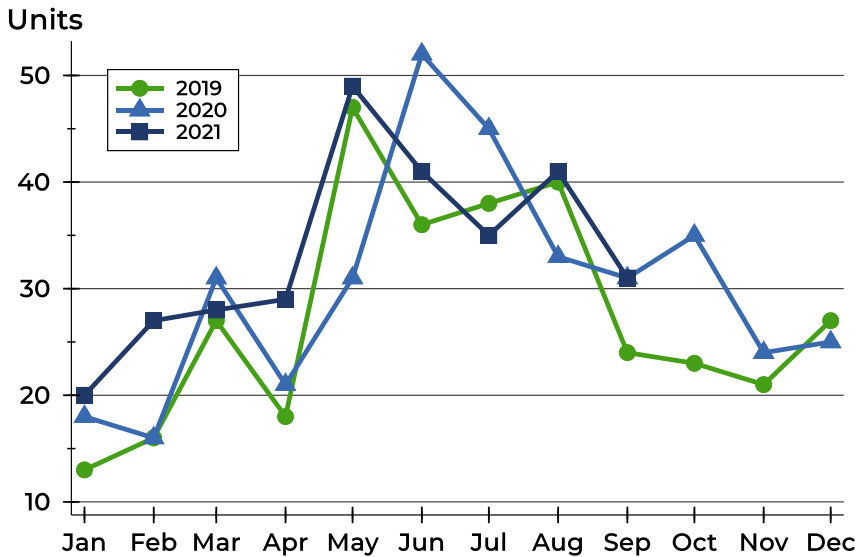
Units





## Pottawatomie County Closed Listings Analysis

### Closed Listings by Month



Month	2019	2020	2021
January	13	18	20
February	16	16	27
March	27	31	28
April	18	21	29
May	47	31	49
June	36	52	41
July	38	45	35
August	40	33	41
September	24	31	31
October	23	35	27
November	21	24	25
December	27	25	25

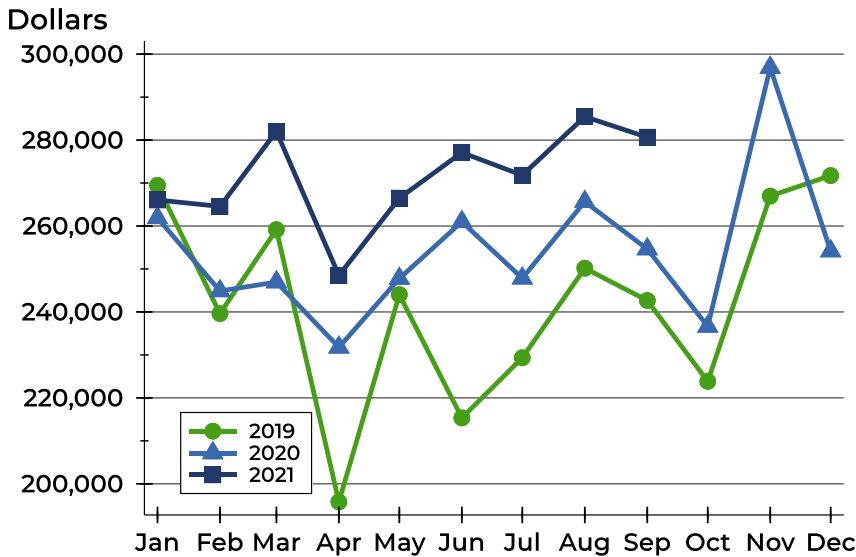
### Closed Listings by Price Range

Price Range	Sales		Months' Supply	Sale Price		Days on Market		Price as % of List		Price as % of Orig.	
	Number	Percent		Average	Median	Avg.	Med.	Avg.	Med.	Avg.	Med.
Below \$25,000	0	0.0%	N/A	N/A	N/A	N/A	N/A	N/A	N/A	N/A	N/A
\$25,000-\$49,999	0	0.0%	N/A	N/A	N/A	N/A	N/A	N/A	N/A	N/A	N/A
\$50,000-\$99,999	1	3.2%	0.7	70,000	70,000	21	21	84.3%	84.3%	84.3%	84.3%
\$100,000-\$124,999	1	3.2%	3.0	105,000	105,000	6	6	84.0%	84.0%	84.0%	84.0%
\$125,000-\$149,999	0	0.0%	N/A	N/A	N/A	N/A	N/A	N/A	N/A	N/A	N/A
\$150,000-\$174,999	2	6.5%	2.8	158,750	158,750	55	55	98.5%	98.5%	97.1%	97.1%
\$175,000-\$199,999	3	9.7%	0.7	189,300	190,000	20	7	103.3%	103.3%	100.6%	102.7%
\$200,000-\$249,999	4	12.9%	1.4	240,850	244,000	8	5	99.9%	98.6%	99.9%	98.6%
\$250,000-\$299,999	8	25.8%	0.3	275,188	271,500	40	9	99.3%	99.1%	98.5%	98.7%
\$300,000-\$399,999	9	29.0%	2.1	332,799	315,000	27	13	102.4%	101.0%	102.0%	100.0%
\$400,000-\$499,999	1	3.2%	1.6	410,000	410,000	44	44	100.0%	100.0%	98.8%	98.8%
\$500,000-\$749,999	2	6.5%	2.0	535,000	535,000	11	11	103.9%	103.9%	103.9%	103.9%
\$750,000-\$999,999	0	0.0%	N/A	N/A	N/A	N/A	N/A	N/A	N/A	N/A	N/A
\$1,000,000 and up	0	0.0%	N/A	N/A	N/A	N/A	N/A	N/A	N/A	N/A	N/A



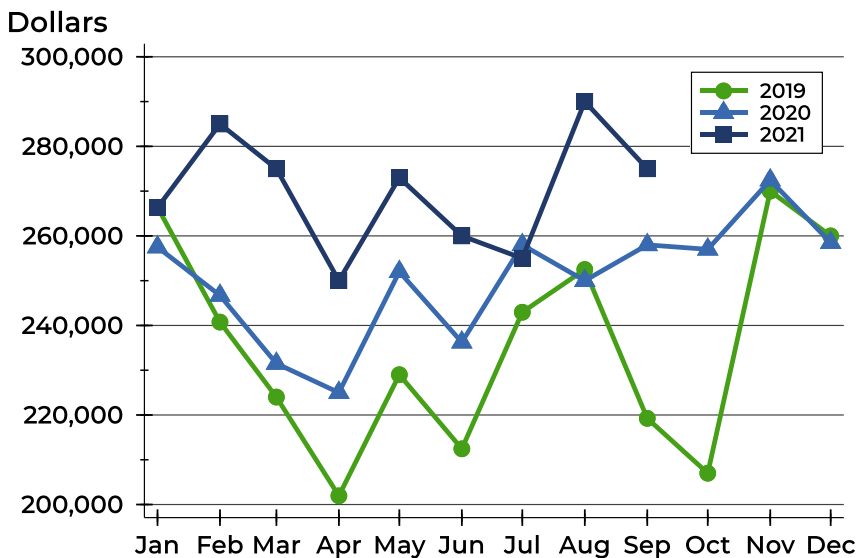
## Pottawatomie County Closed Listings Analysis

### Average Price



Month	2019	2020	2021
January	269,469	261,903	266,064
February	239,622	244,894	264,562
March	259,167	246,959	282,018
April	195,802	231,776	248,504
May	244,023	247,790	266,490
June	215,347	260,992	277,099
July	229,337	247,853	271,821
August	250,183	265,671	285,450
September	242,679	254,644	280,661
October	223,845	236,625	
November	266,971	296,878	
December	271,739	254,176	

### Median Price

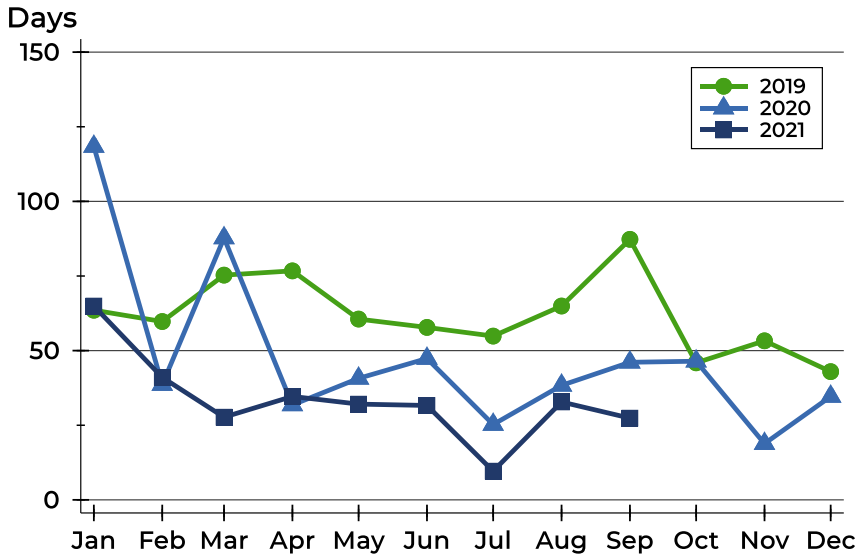


Month	2019	2020	2021
January	266,403	257,500	266,314
February	240,750	246,700	285,000
March	224,000	231,500	275,000
April	201,950	225,000	250,000
May	229,000	252,000	273,000
June	212,450	236,250	260,000
July	242,950	258,000	255,000
August	252,500	250,000	290,000
September	219,250	258,000	275,000
October	207,000	257,000	
November	270,000	272,450	
December	260,000	258,500	



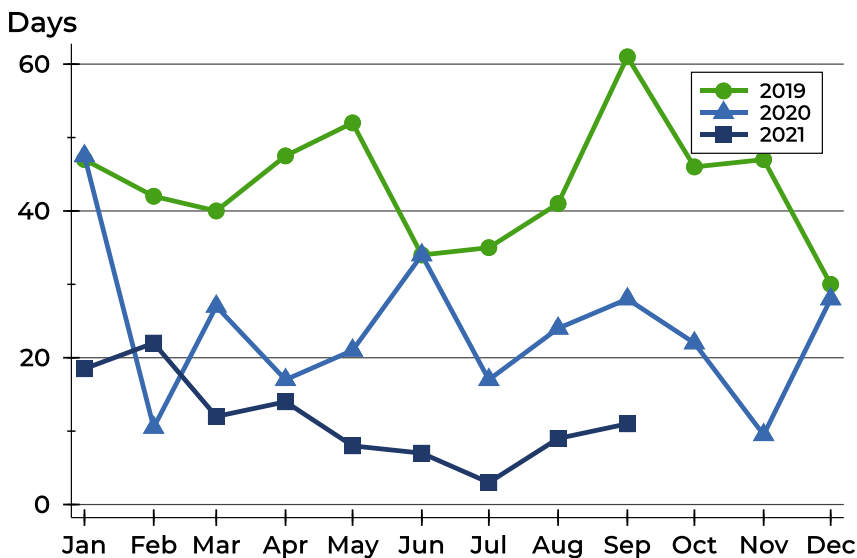
## Pottawatomie County Closed Listings Analysis

### Average DOM



Month	2019	2020	2021
January	64	118	65
February	60	39	41
March	75	88	28
April	77	32	35
May	61	41	32
June	58	47	32
July	55	25	10
August	65	38	33
September	87	46	27
October	46	46	
November	53	19	
December	43	35	

### Median DOM



Month	2019	2020	2021
January	47	48	19
February	42	11	22
March	40	27	12
April	48	17	14
May	52	21	8
June	34	34	7
July	35	17	3
August	41	24	9
September	61	28	11
October	46	22	
November	47	10	
December	30	28	



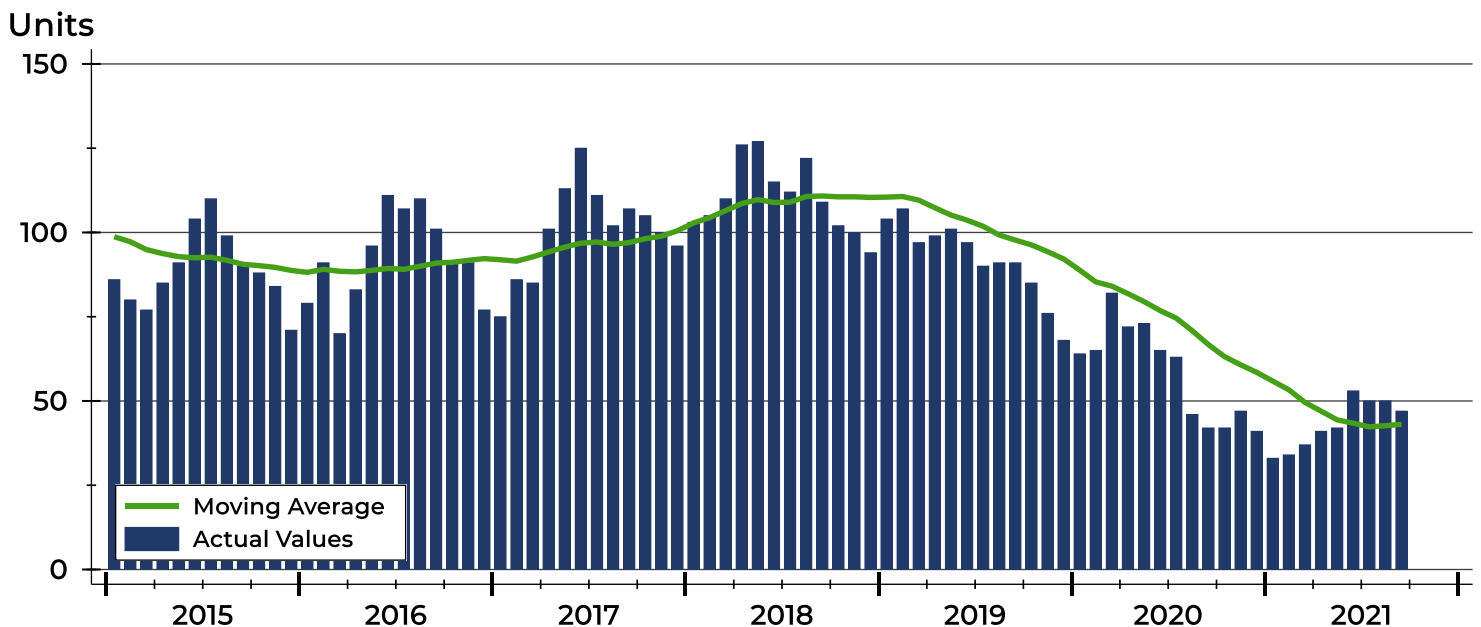
## Pottawatomie County Active Listings Analysis

Summary Statistics for Active Listings		End of September		
		2021	2020	Change
Active Listings		<b>47</b>	42	11.9%
Volume (1,000s)		<b>13,039</b>	10,971	18.8%
Months' Supply		<b>1.5</b>	1.4	7.1%
Average	List Price	<b>277,430</b>	261,224	6.2%
	Days on Market	<b>72</b>	56	28.6%
	Percent of Original	<b>98.5%</b>	100.1%	-1.6%
Median	List Price	<b>285,000</b>	256,950	10.9%
	Days on Market	<b>46</b>	39	17.9%
	Percent of Original	<b>100.0%</b>	100.0%	0.0%

A total of 47 homes were available for sale in Pottawatomie County at the end of September. This represents a 1.5 months' supply of active listings.

The median list price of homes on the market at the end of September was \$285,000, up 10.9% from 2020. The typical time on market for active listings was 46 days, up from 39 days a year earlier.

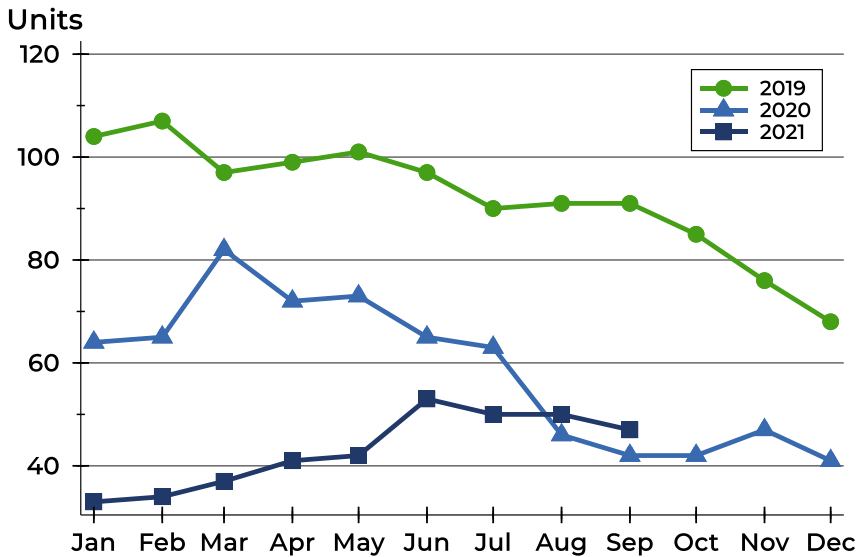
## History of Active Listings





## Pottawatomie County Active Listings Analysis

### Active Listings by Month



Month	2019	2020	2021
January	104	64	33
February	107	65	34
March	97	82	37
April	99	72	41
May	101	73	42
June	97	65	53
July	90	63	50
August	91	46	50
September	91	42	47
October	85	42	
November	76	47	
December	68	41	

### Active Listings by Price Range

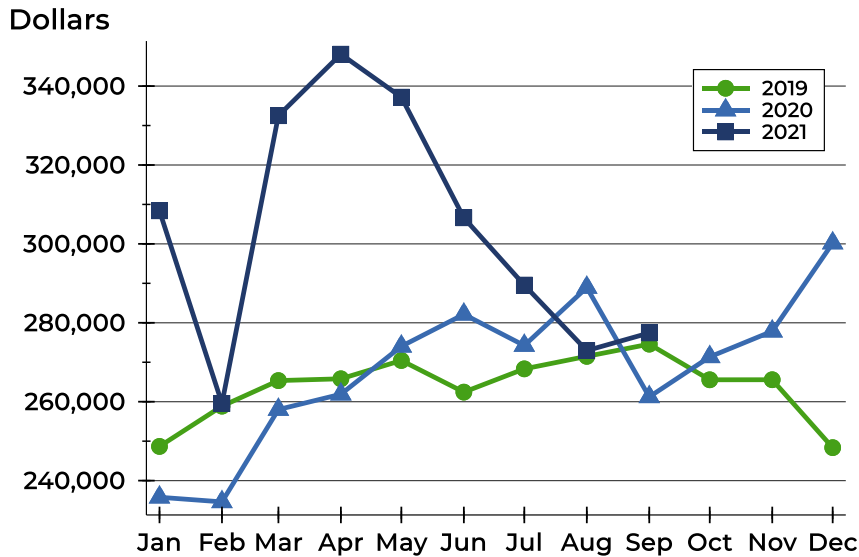
Price Range	Active Listings		Months' Supply	List Price		Days on Market		Price as % of Orig.	
	Number	Percent		Average	Median	Avg.	Med.	Avg.	Med.
Below \$25,000	0	0.0%	N/A	N/A	N/A	N/A	N/A	N/A	N/A
\$25,000-\$49,999	1	2.1%	N/A	48,600	48,600	438	438	100.0%	100.0%
\$50,000-\$99,999	1	2.1%	0.7	92,000	92,000	121	121	100.0%	100.0%
\$100,000-\$124,999	2	4.3%	3.0	108,000	108,000	64	64	95.9%	95.9%
\$125,000-\$149,999	3	6.4%	N/A	130,000	130,000	42	12	100.0%	100.0%
\$150,000-\$174,999	6	12.8%	2.8	161,200	161,400	66	60	98.0%	99.8%
\$175,000-\$199,999	2	4.3%	0.7	196,500	196,500	32	32	97.4%	97.4%
\$200,000-\$249,999	8	17.0%	1.4	219,038	217,450	46	37	99.5%	100.0%
\$250,000-\$299,999	2	4.3%	0.3	287,450	287,450	97	97	98.3%	98.3%
\$300,000-\$399,999	17	36.2%	2.1	361,318	369,900	78	81	98.4%	100.0%
\$400,000-\$499,999	3	6.4%	1.6	421,300	414,900	35	29	96.7%	98.0%
\$500,000-\$749,999	2	4.3%	2.0	599,450	599,450	48	48	100.0%	100.0%
\$750,000-\$999,999	0	0.0%	N/A	N/A	N/A	N/A	N/A	N/A	N/A
\$1,000,000 and up	0	0.0%	N/A	N/A	N/A	N/A	N/A	N/A	N/A





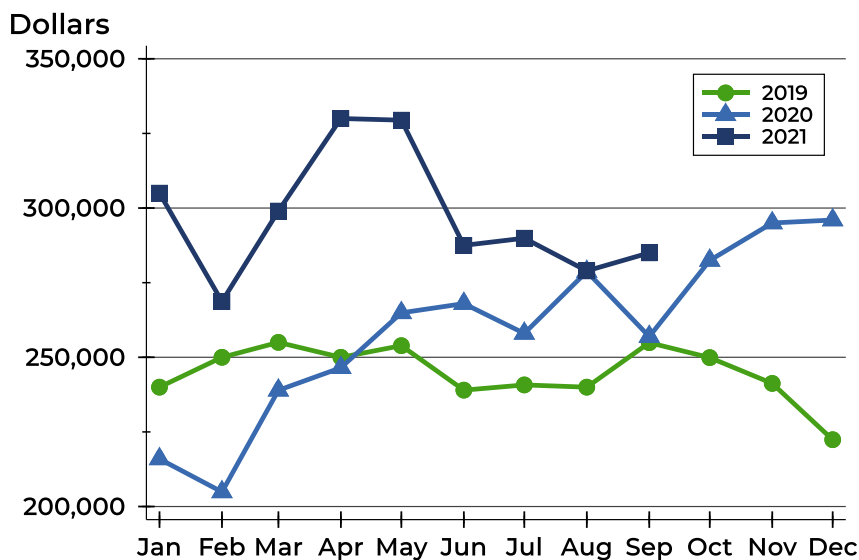
## Pottawatomie County Active Listings Analysis

### Average Price



Month	2019	2020	2021
January	248,669	235,787	308,385
February	258,874	234,610	259,565
March	265,351	258,014	332,489
April	265,807	261,901	348,095
May	270,449	274,036	337,200
June	262,429	282,150	306,614
July	268,322	274,238	289,574
August	271,501	288,946	272,958
September	274,589	261,224	277,430
October	265,558	271,369	
November	265,572	277,857	
December	248,359	300,205	

### Median Price

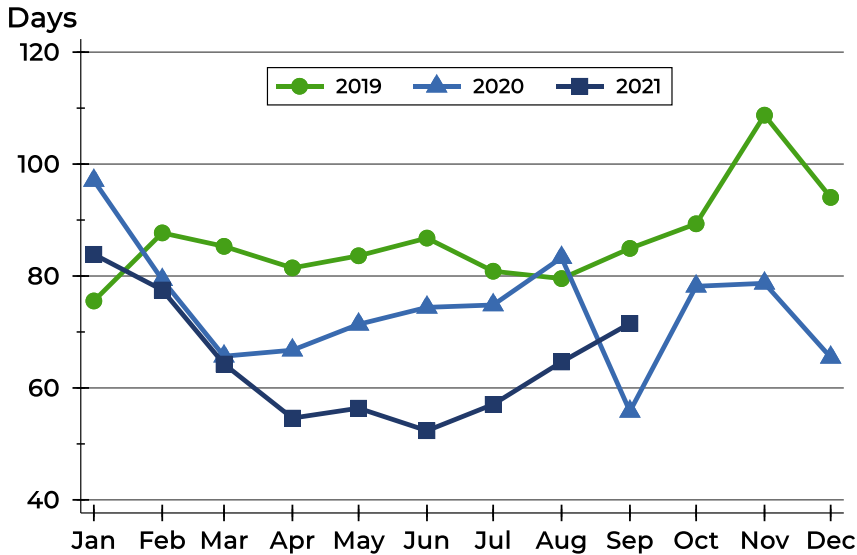


Month	2019	2020	2021
January	240,000	215,950	305,000
February	250,000	204,900	268,700
March	255,000	238,950	299,000
April	250,000	246,500	330,000
May	253,900	264,900	329,450
June	239,000	268,000	287,500
July	240,750	258,000	289,900
August	240,000	278,725	278,950
September	254,900	256,950	285,000
October	249,900	282,450	
November	241,250	295,000	
December	222,400	296,000	



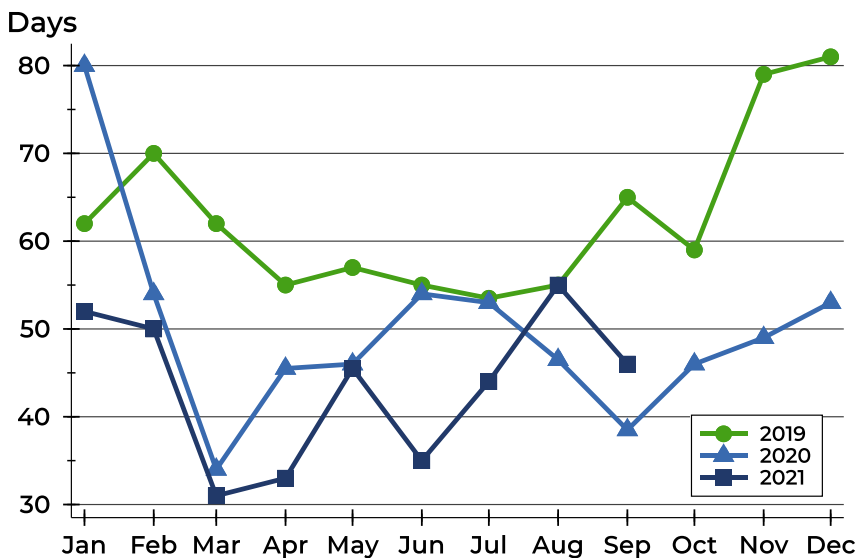
## Pottawatomie County Active Listings Analysis

### Average DOM



Month	2019	2020	2021
January	76	97	84
February	88	79	78
March	85	66	64
April	81	67	55
May	84	71	56
June	87	74	52
July	81	75	57
August	80	83	65
September	85	56	72
October	89	78	
November	109	79	
December	94	65	

### Median DOM

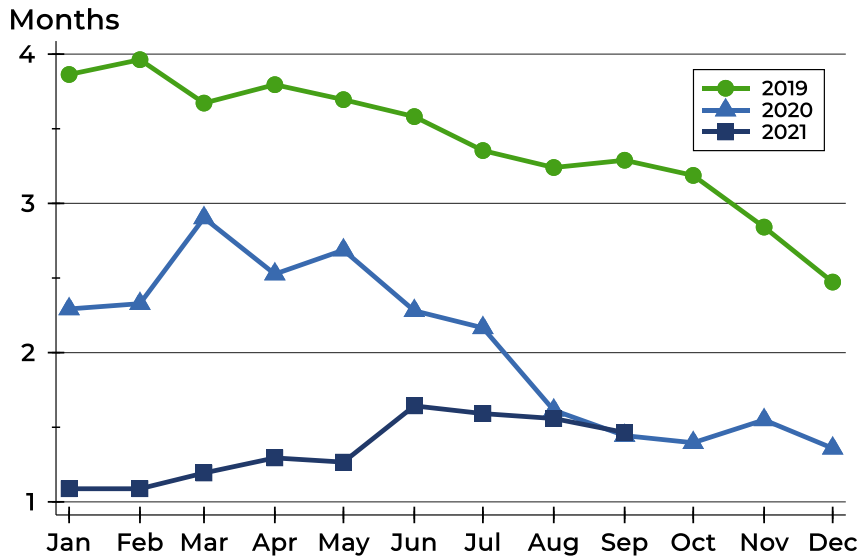


Month	2019	2020	2021
January	62	80	52
February	70	54	50
March	62	34	31
April	55	46	33
May	57	46	46
June	55	54	35
July	54	53	44
August	55	47	55
September	65	39	46
October	59	46	
November	79	49	
December	81	53	



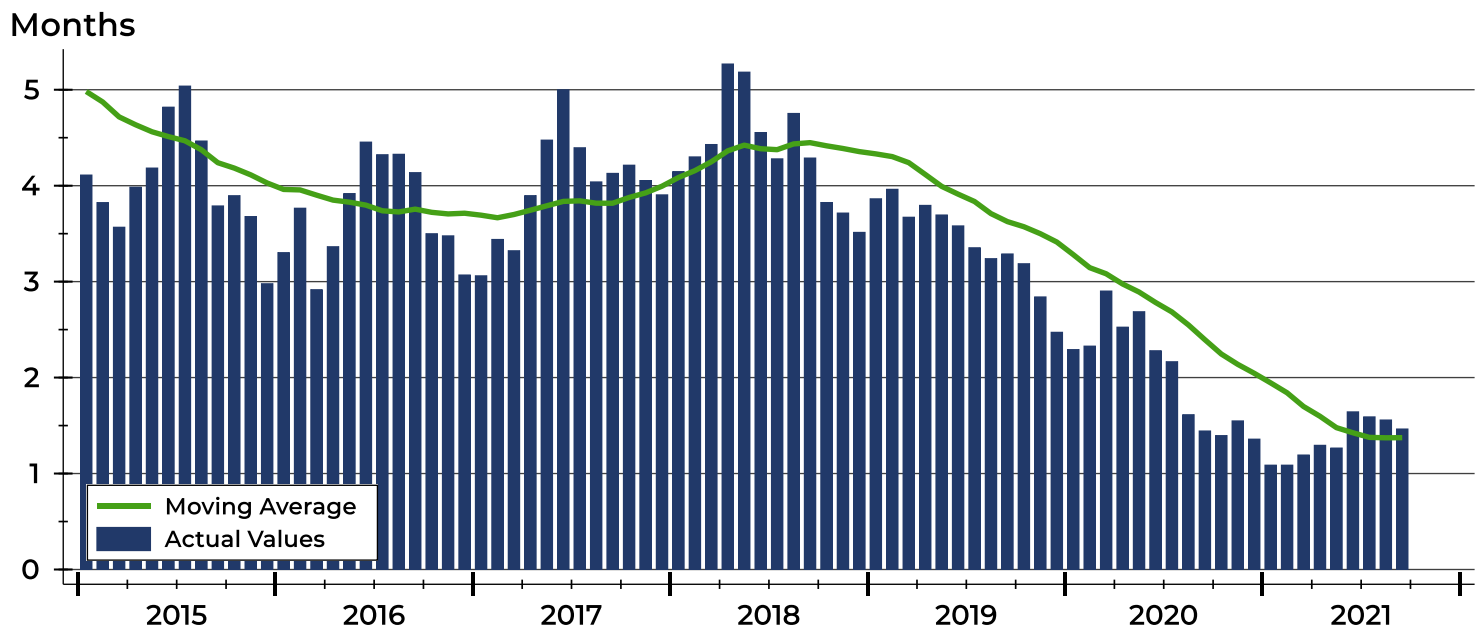
## Pottawatomie County Months' Supply Analysis

### Months' Supply by Month



Month	2019	2020	2021
January	3.9	2.3	1.1
February	4.0	2.3	1.1
March	3.7	2.9	1.2
April	3.8	2.5	1.3
May	3.7	2.7	1.3
June	3.6	2.3	1.6
July	3.4	2.2	1.6
August	3.2	1.6	1.6
September	3.3	1.4	1.5
October	3.2	1.4	
November	2.8	1.5	
December	2.5	1.4	

### History of Month's Supply





## Pottawatomie County New Listings Analysis

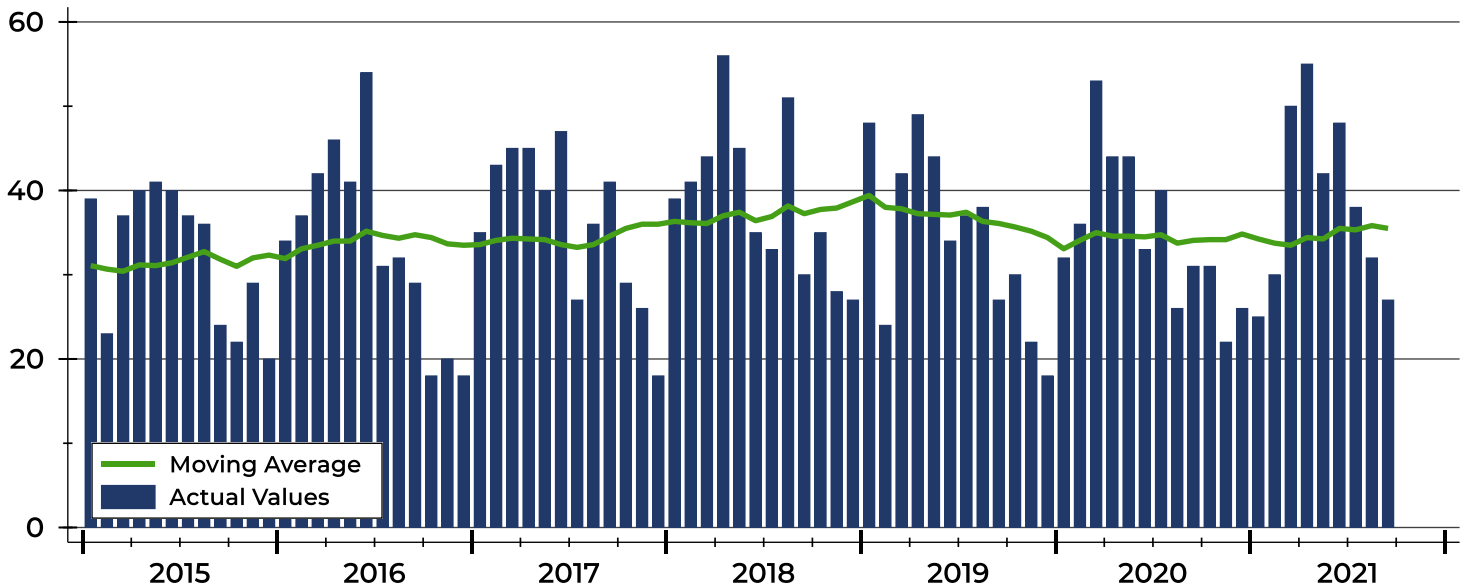
Summary Statistics for New Listings		2021	September 2020	Change
Current Month	New Listings	27	31	-12.9%
	Volume (1,000s)	8,034	7,668	4.8%
	Average List Price	297,564	247,342	20.3%
	Median List Price	310,000	239,000	29.7%
Year-to-Date	New Listings	347	339	2.4%
	Volume (1,000s)	96,918	88,939	9.0%
	Average List Price	279,302	262,358	6.5%
	Median List Price	270,000	257,500	4.9%

A total of 27 new listings were added in Pottawatomie County during September, down 12.9% from the same month in 2020. Year-to-date Pottawatomie County has seen 347 new listings.

The median list price of these homes was \$310,000 up from \$239,000 in 2020.

## History of New Listings

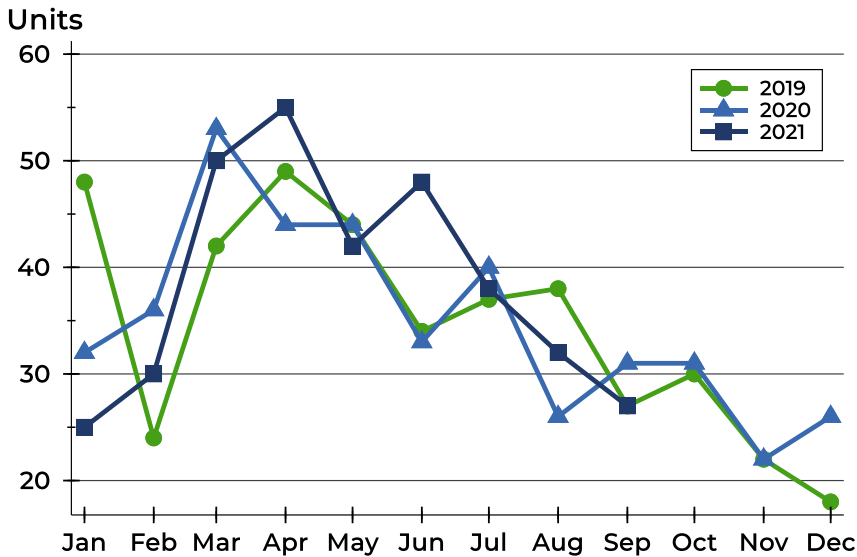
Units





## Pottawatomie County New Listings Analysis

### New Listings by Month



Month	2019	2020	2021
January	48	32	25
February	24	36	30
March	42	53	50
April	49	44	55
May	44	44	42
June	34	33	48
July	37	40	38
August	38	26	32
September	27	31	27
October	30	31	22
November	22	22	22
December	18	26	26

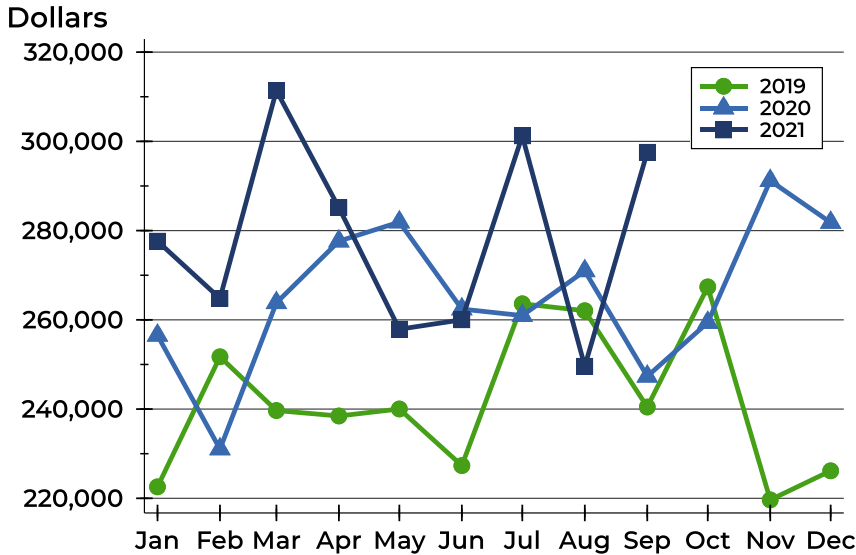
### New Listings by Price Range

Price Range	New Listings		List Price		Days on Market		Price as % of Orig.	
	Number	Percent	Average	Median	Avg.	Med.	Avg.	Med.
Below \$25,000	1	3.7%	10,000	10,000	1	1	100.0%	100.0%
\$25,000-\$49,999	0	0.0%	N/A	N/A	N/A	N/A	N/A	N/A
\$50,000-\$99,999	0	0.0%	N/A	N/A	N/A	N/A	N/A	N/A
\$100,000-\$124,999	1	3.7%	106,000	106,000	33	33	100.0%	100.0%
\$125,000-\$149,999	1	3.7%	135,000	135,000	8	8	100.0%	100.0%
\$150,000-\$174,999	1	3.7%	150,000	150,000	14	14	100.0%	100.0%
\$175,000-\$199,999	4	14.8%	192,000	192,000	18	17	98.7%	100.0%
\$200,000-\$249,999	3	11.1%	214,333	210,000	7	10	100.0%	100.0%
\$250,000-\$299,999	2	7.4%	294,168	294,168	2	2	100.0%	100.0%
\$300,000-\$399,999	9	33.3%	349,656	340,000	18	15	99.1%	100.0%
\$400,000-\$499,999	3	11.1%	429,333	439,000	22	30	99.3%	100.0%
\$500,000-\$749,999	2	7.4%	599,500	599,500	12	12	98.1%	98.1%
\$750,000-\$999,999	0	0.0%	N/A	N/A	N/A	N/A	N/A	N/A
\$1,000,000 and up	0	0.0%	N/A	N/A	N/A	N/A	N/A	N/A



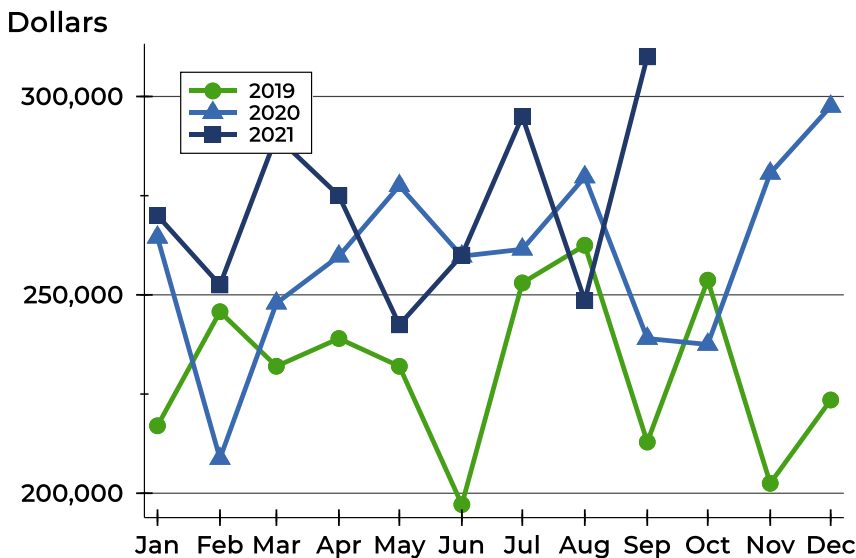
## Pottawatomie County New Listings Analysis

### Average Price



Month	2019	2020	2021
January	222,566	256,523	277,640
February	251,719	231,047	264,803
March	239,671	263,816	311,380
April	238,453	277,634	285,146
May	240,025	281,910	257,901
June	227,338	262,417	260,013
July	263,600	260,954	301,234
August	262,045	270,965	249,599
September	240,467	247,342	297,564
October	267,382	259,397	
November	219,650	291,191	
December	226,161	281,819	

### Median Price



Month	2019	2020	2021
January	217,000	264,500	270,000
February	245,750	208,750	252,500
March	232,000	247,900	289,950
April	239,000	259,750	275,000
May	232,000	277,500	242,450
June	197,150	259,750	260,000
July	253,000	261,500	295,000
August	262,500	279,700	248,575
September	212,900	239,000	310,000
October	253,700	237,500	
November	202,500	280,635	
December	223,500	297,500	



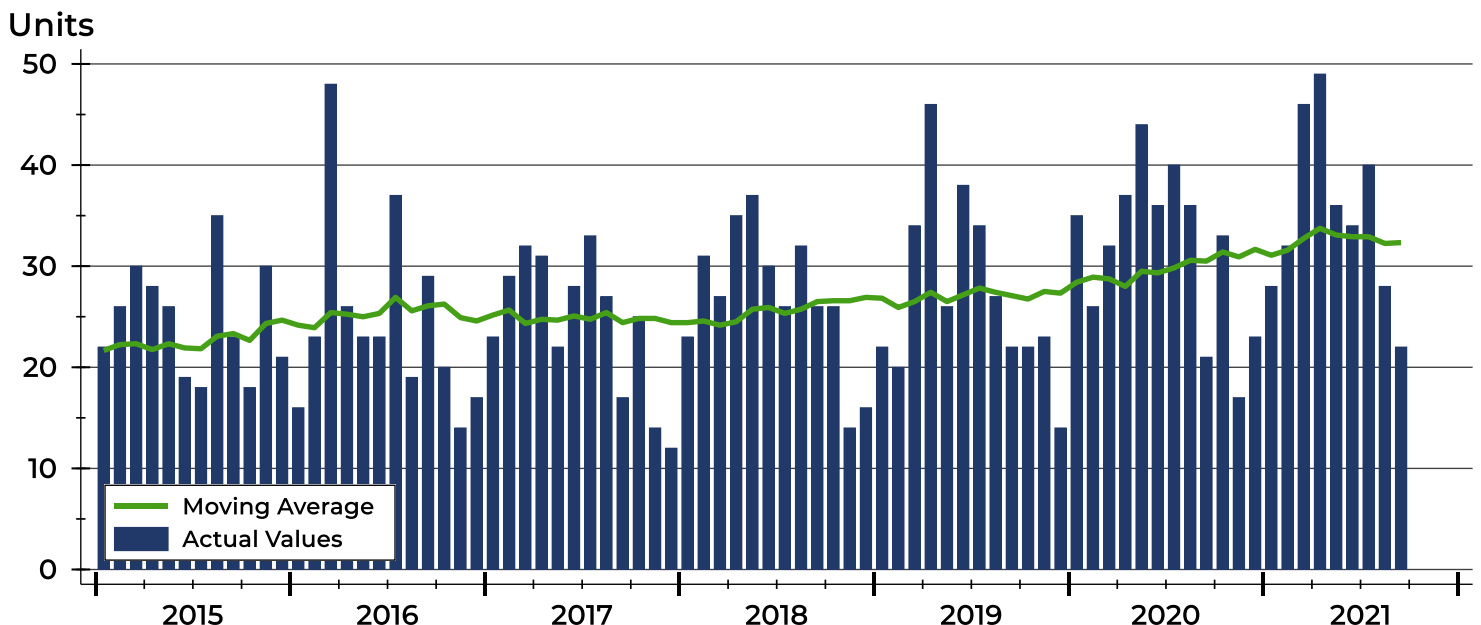
## Pottawatomie County Contracts Written Analysis

Summary Statistics for Contracts Written		September			Year-to-Date		
		2021	2020	Change	2021	2020	Change
Contracts Written		22	21	4.8%	315	307	2.6%
Volume (1,000s)		5,555	5,752	-3.4%	86,173	78,524	9.7%
Average	Sale Price	252,502	273,890	-7.8%	273,566	255,777	7.0%
	Days on Market	46	39	17.9%	30	45	-33.3%
	Percent of Original	97.8%	98.0%	-0.2%	99.5%	97.4%	2.2%
Median	Sale Price	277,450	257,000	8.0%	270,000	249,990	8.0%
	Days on Market	22	21	4.8%	8	23	-65.2%
	Percent of Original	100.0%	99.1%	0.9%	100.0%	99.0%	1.0%

A total of 22 contracts for sale were written in Pottawatomie County during the month of September, up from 21 in 2020. The median list price of these homes was \$277,450, up from \$257,000 the prior year.

Half of the homes that went under contract in September were on the market less than 22 days, compared to 21 days in September 2020.

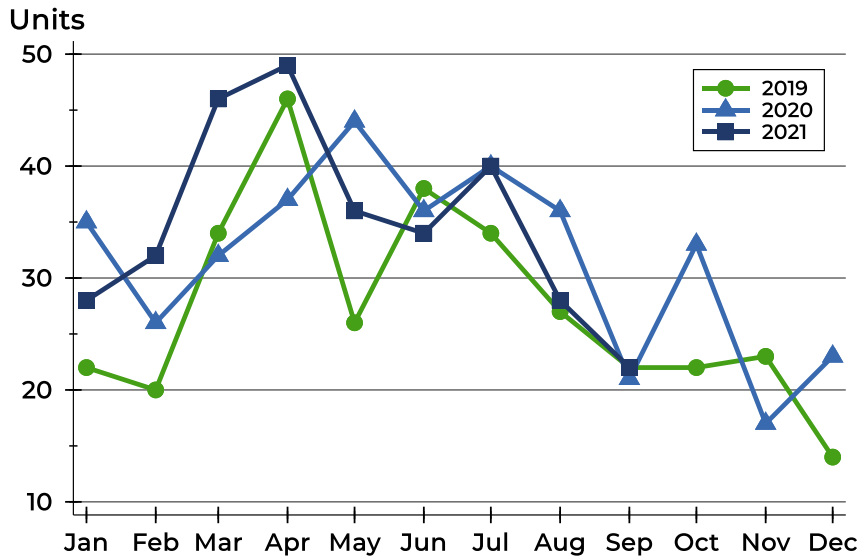
## History of Contracts Written





## Pottawatomie County Contracts Written Analysis

### Contracts Written by Month



Month	2019	2020	2021
January	22	35	28
February	20	26	32
March	34	32	46
April	46	37	49
May	26	44	36
June	38	36	34
July	34	40	40
August	27	36	28
September	22	21	22
October	22	33	
November	23	17	
December	14	23	

### Contracts Written by Price Range

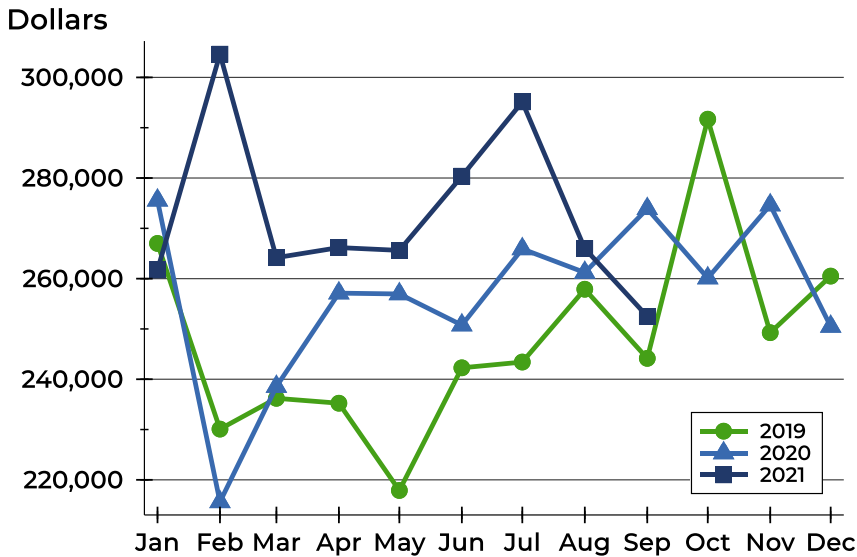
Price Range	Contracts Written		List Price		Days on Market		Price as % of Orig.	
	Number	Percent	Average	Median	Avg.	Med.	Avg.	Med.
Below \$25,000	1	4.5%	10,000	10,000	1	1	100.0%	100.0%
\$25,000-\$49,999	0	0.0%	N/A	N/A	N/A	N/A	N/A	N/A
\$50,000-\$99,999	2	9.1%	80,000	80,000	59	59	97.2%	97.2%
\$100,000-\$124,999	2	9.1%	115,000	115,000	58	58	94.4%	94.4%
\$125,000-\$149,999	0	0.0%	N/A	N/A	N/A	N/A	N/A	N/A
\$150,000-\$174,999	0	0.0%	N/A	N/A	N/A	N/A	N/A	N/A
\$175,000-\$199,999	2	9.1%	187,000	187,000	9	9	100.0%	100.0%
\$200,000-\$249,999	1	4.5%	220,000	220,000	23	23	97.8%	97.8%
\$250,000-\$299,999	9	40.9%	284,671	289,900	55	49	98.8%	100.0%
\$300,000-\$399,999	3	13.6%	336,667	340,000	29	20	97.1%	100.0%
\$400,000-\$499,999	1	4.5%	439,000	439,000	1	1	100.0%	100.0%
\$500,000-\$749,999	1	4.5%	550,000	550,000	151	151	89.4%	89.4%
\$750,000-\$999,999	0	0.0%	N/A	N/A	N/A	N/A	N/A	N/A
\$1,000,000 and up	0	0.0%	N/A	N/A	N/A	N/A	N/A	N/A





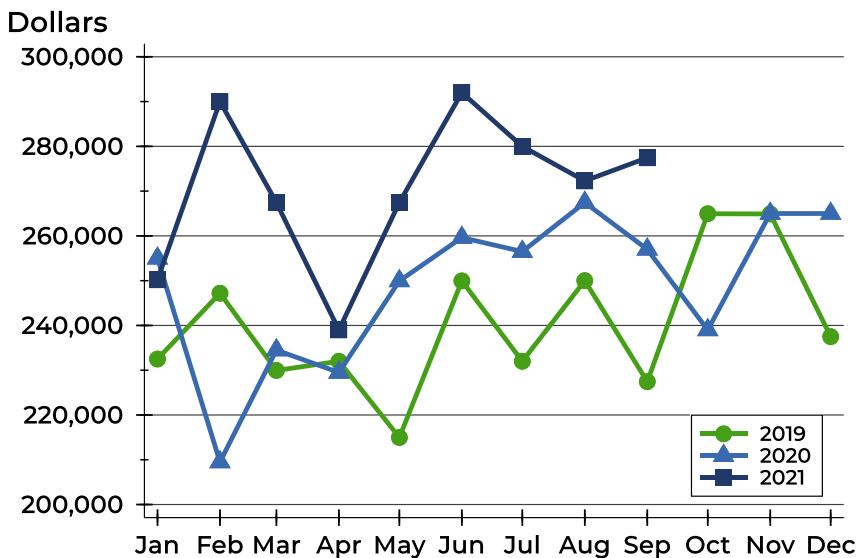
## Pottawatomie County Contracts Written Analysis

### Average Price



Month	2019	2020	2021
January	266,998	275,577	261,718
February	230,090	215,623	304,628
March	236,215	238,542	264,167
April	235,235	257,123	266,177
May	217,892	256,959	265,621
June	242,275	250,765	280,366
July	243,422	265,908	295,136
August	257,893	261,211	265,977
September	244,155	273,890	252,502
October	291,700	260,115	-
November	249,259	274,623	-
December	260,507	250,496	-

### Median Price

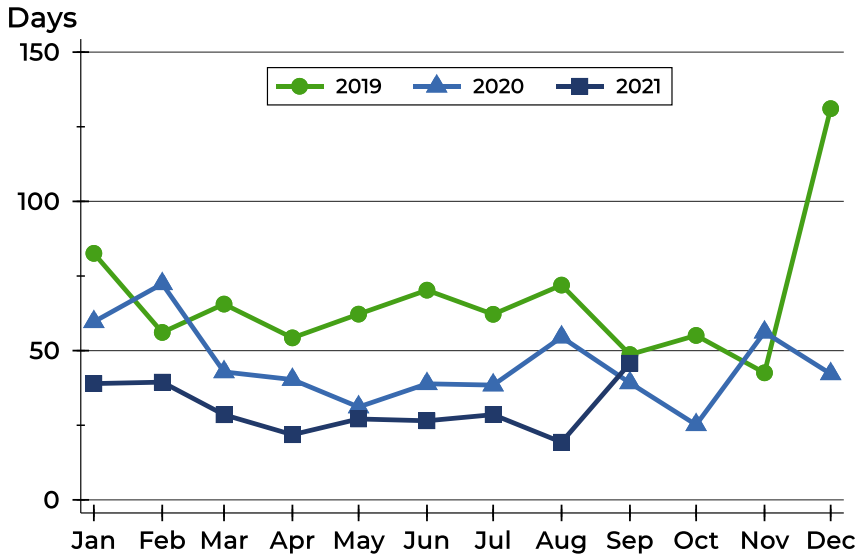


Month	2019	2020	2021
January	232,500	255,000	250,200
February	247,200	209,500	290,000
March	229,950	234,500	267,450
April	232,000	229,500	239,000
May	214,975	249,945	267,450
June	249,950	259,625	292,000
July	232,000	256,500	280,000
August	250,000	267,450	272,280
September	227,450	257,000	277,450
October	264,950	239,000	-
November	264,900	265,000	-
December	237,500	265,000	-



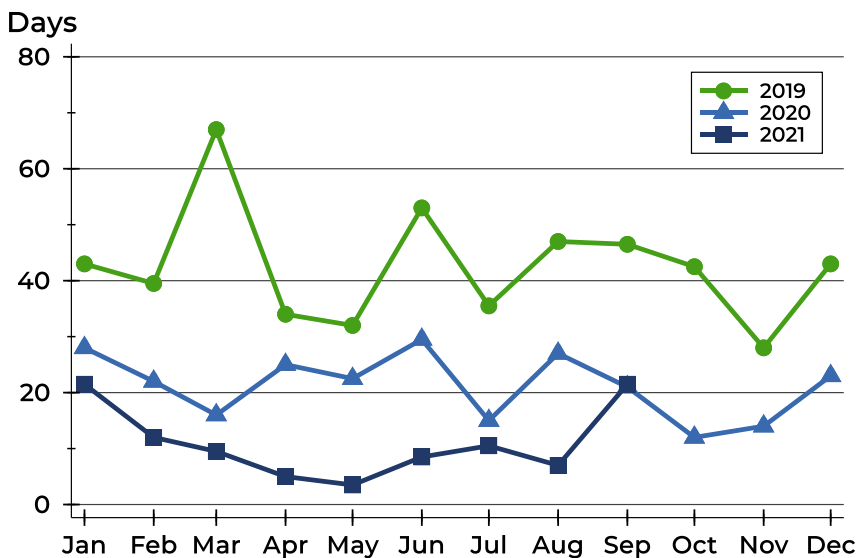
## Pottawatomie County Contracts Written Analysis

### Average DOM



Month	2019	2020	2021
January	83	60	39
February	56	72	39
March	66	43	29
April	54	40	22
May	62	31	27
June	70	39	27
July	62	38	29
August	72	55	19
September	49	39	46
October	55	25	
November	43	56	
December	131	42	

### Median DOM



Month	2019	2020	2021
January	43	28	22
February	40	22	12
March	67	16	10
April	34	25	5
May	32	23	4
June	53	30	9
July	36	15	11
August	47	27	7
September	47	21	22
October	43	12	
November	28	14	
December	43	23	



## Pottawatomie County Pending Contracts Analysis

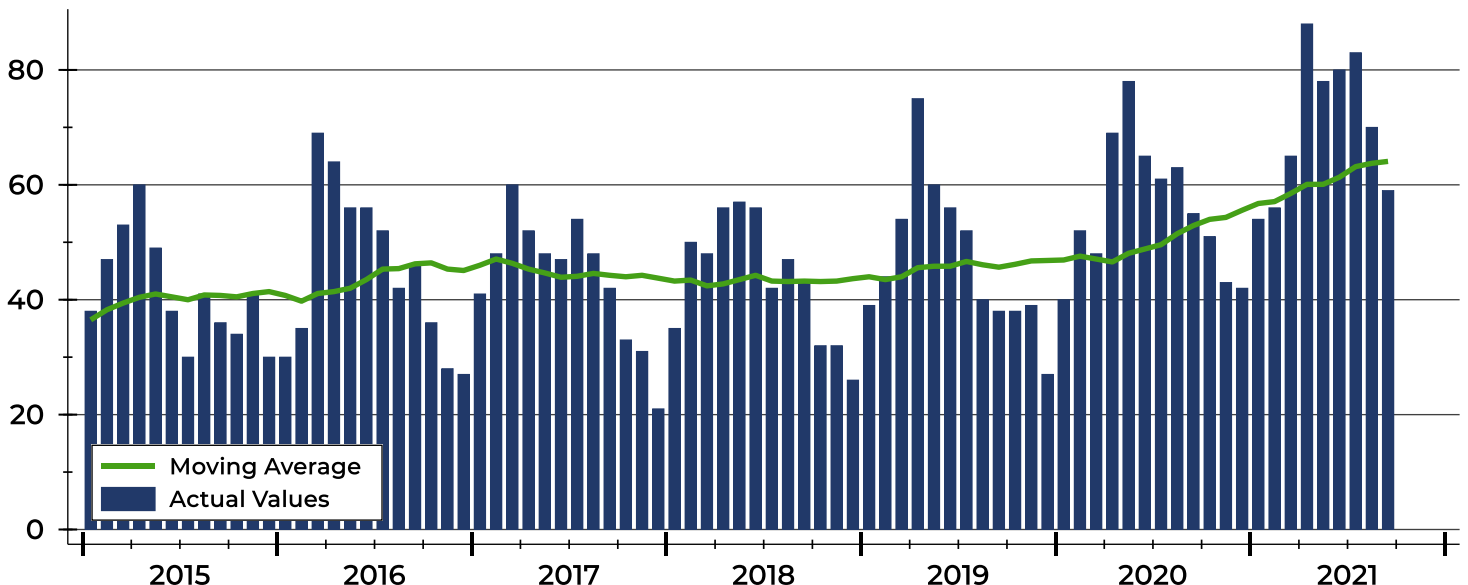
Summary Statistics for Pending Contracts		End of September		
		2021	2020	Change
Pending Contracts		59	55	7.3%
Volume (1,000s)		16,131	14,255	13.2%
Average	List Price	273,403	259,189	5.5%
	Days on Market	39	54	-27.8%
	Percent of Original	99.6%	99.6%	0.0%
Median	List Price	270,000	265,000	1.9%
	Days on Market	22	26	-15.4%
	Percent of Original	100.0%	100.0%	0.0%

A total of 59 listings in Pottawatomie County had contracts pending at the end of September, up from 55 contracts pending at the end of September 2020.

Pending contracts reflect listings with a contract in place at the end of the month. In contrast, contracts written measures the number of listings put under contract during the month.

## History of Pending Contracts

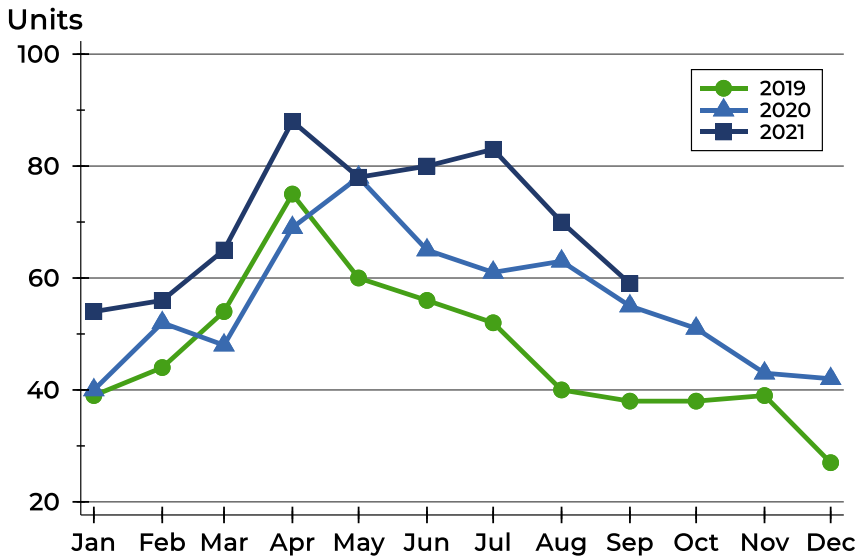
Units





## Pottawatomie County Pending Contracts Analysis

### Pending Contracts by Month



Month	2019	2020	2021
January	39	40	54
February	44	52	56
March	54	48	65
April	75	69	88
May	60	78	78
June	56	65	80
July	52	61	83
August	40	63	70
September	38	55	59
October	38	51	
November	39	43	
December	27	42	

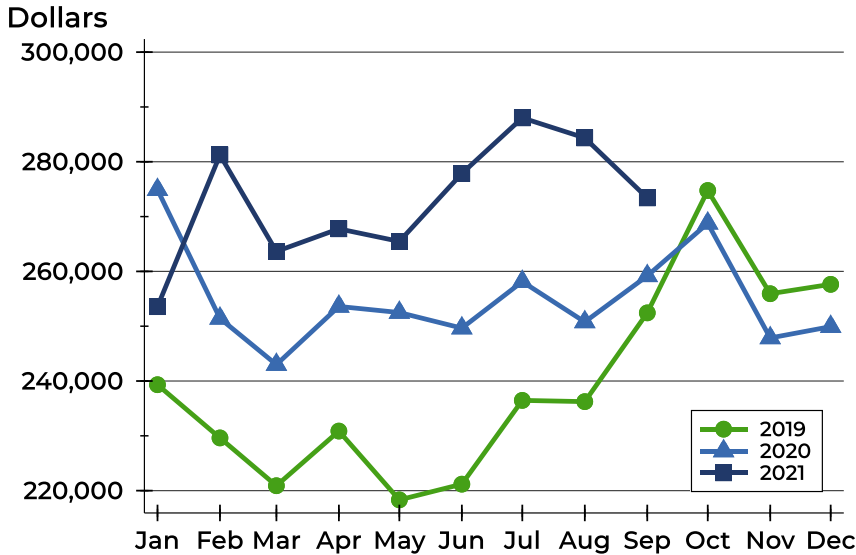
### Pending Contracts by Price Range

Price Range	Pending Contracts		List Price		Days on Market		Price as % of Orig.	
	Number	Percent	Average	Median	Avg.	Med.	Avg.	Med.
Below \$25,000	1	1.7%	10,000	10,000	1	1	100.0%	100.0%
\$25,000-\$49,999	1	1.7%	49,900	49,900	62	62	100.0%	100.0%
\$50,000-\$99,999	2	3.4%	80,000	80,000	59	59	97.2%	97.2%
\$100,000-\$124,999	3	5.1%	115,000	115,000	52	41	96.3%	100.0%
\$125,000-\$149,999	3	5.1%	138,300	139,900	35	3	97.1%	100.0%
\$150,000-\$174,999	1	1.7%	168,000	168,000	7	7	98.8%	98.8%
\$175,000-\$199,999	5	8.5%	189,780	189,000	50	8	99.5%	100.0%
\$200,000-\$249,999	9	15.3%	231,556	229,500	30	24	99.5%	100.0%
\$250,000-\$299,999	13	22.0%	280,892	284,900	49	41	101.4%	100.0%
\$300,000-\$399,999	12	20.3%	336,375	324,950	30	15	100.6%	100.0%
\$400,000-\$499,999	6	10.2%	422,833	429,500	11	10	99.6%	100.0%
\$500,000-\$749,999	3	5.1%	575,000	585,000	93	98	95.8%	97.8%
\$750,000-\$999,999	0	0.0%	N/A	N/A	N/A	N/A	N/A	N/A
\$1,000,000 and up	0	0.0%	N/A	N/A	N/A	N/A	N/A	N/A



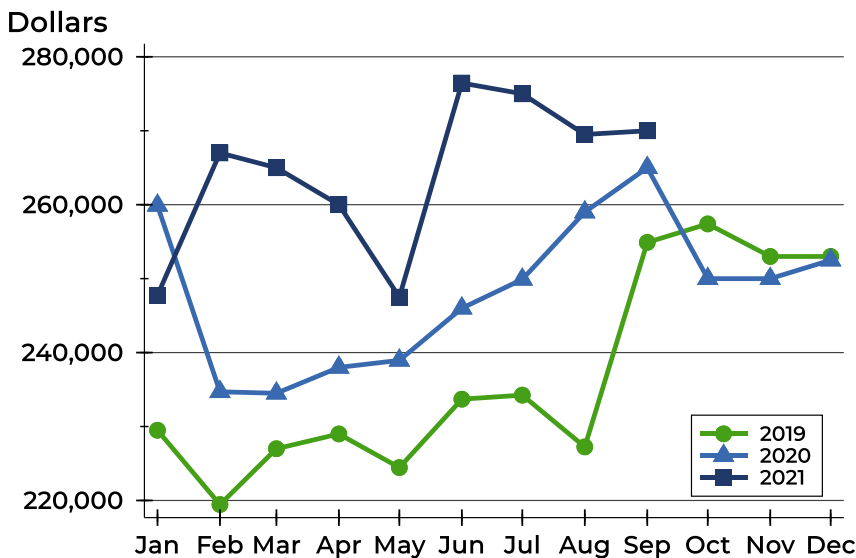
## Pottawatomie County Pending Contracts Analysis

### Average Price



Month	2019	2020	2021
January	239,327	274,908	253,565
February	229,622	251,427	281,241
March	220,896	242,995	263,641
April	230,873	253,607	267,766
May	218,317	252,496	265,473
June	221,186	249,649	277,862
July	236,469	258,138	288,006
August	236,240	250,781	284,350
September	252,437	259,189	273,403
October	274,761	268,773	
November	255,927	247,860	
December	257,641	249,923	

### Median Price

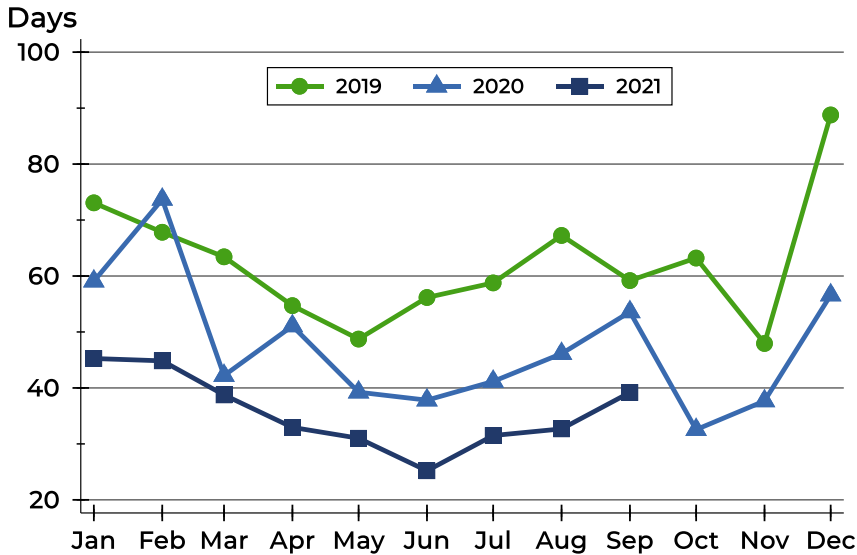


Month	2019	2020	2021
January	229,500	259,900	247,750
February	219,450	234,700	267,000
March	227,000	234,500	265,000
April	229,000	238,000	260,000
May	224,450	238,950	247,500
June	233,700	246,000	276,450
July	234,250	249,900	275,000
August	227,250	259,000	269,500
September	254,900	265,000	270,000
October	257,400	250,000	
November	253,000	250,000	
December	253,000	252,500	



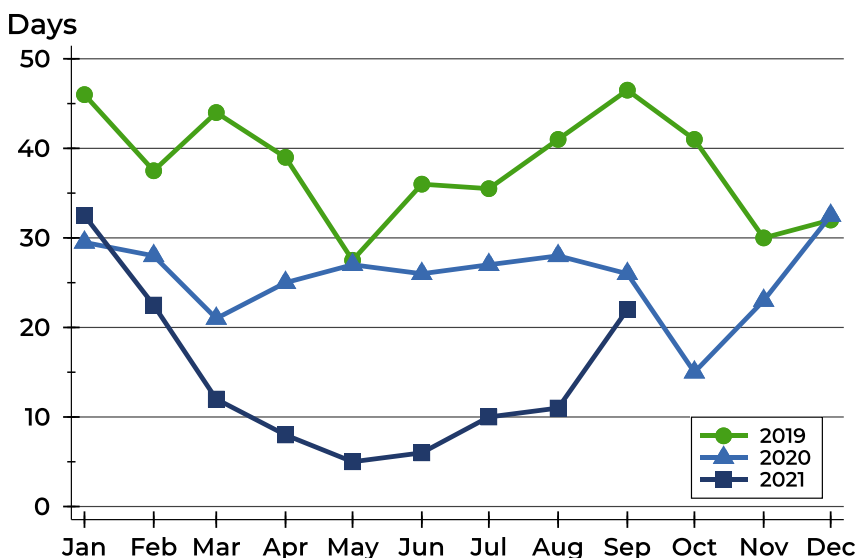
## Pottawatomie County Pending Contracts Analysis

### Average DOM



Month	2019	2020	2021
January	73	59	45
February	68	74	45
March	63	42	39
April	55	51	33
May	49	39	31
June	56	38	25
July	59	41	31
August	67	46	33
September	59	54	39
October	63	33	
November	48	38	
December	89	57	

### Median DOM



Month	2019	2020	2021
January	46	30	33
February	38	28	23
March	44	21	12
April	39	25	8
May	28	27	5
June	36	26	6
July	36	27	10
August	41	28	11
September	47	26	22
October	41	15	
November	30	23	
December	32	33	