



## Pottawatomie County Housing Report



### Market Overview

#### Pottawatomie County Home Sales Fell in January

Total home sales in Pottawatomie County fell last month to 19 units, compared to 20 units in January 2021. Total sales volume was \$5.4 million, up from a year earlier.

The median sale price in January was \$265,500, down from \$266,314 a year earlier. Homes that sold in January were typically on the market for 27 days and sold for 100.0% of their list prices.

#### Pottawatomie County Active Listings Down at End of January

The total number of active listings in Pottawatomie County at the end of January was 29 units, down from 33 at the same point in 2021. This represents a 0.9 months' supply of homes available for sale. The median list price of homes on the market at the end of January was \$325,000.

During January, a total of 25 contracts were written down from 28 in January 2021. At the end of the month, there were 45 contracts still pending.

### Report Contents

- Summary Statistics – Page 2
- Closed Listing Analysis – Page 3
- Active Listings Analysis – Page 7
- Months' Supply Analysis – Page 11
- New Listings Analysis – Page 12
- Contracts Written Analysis – Page 15
- Pending Contracts Analysis – Page 19

### Contact Information

Margaret Pendleton, Association Executive  
 Flint Hills Association of REALTORS®  
 205 S. Seth Child Road  
 Manhattan, KS 66502  
 685-776-1211  
[ae@flinthillsrealtors.net](mailto:ae@flinthillsrealtors.net)  
[www.flinthillsrealtors.net](http://www.flinthillsrealtors.net)



**January  
2022**

# Flint Hills MLS Statistics



**FLINT HILLS  
ASSOCIATION  
OF REALTORS®**

## Pottawatomie County Summary Statistics

January MLS Statistics Three-year History		Current Month			Year-to-Date		
		2022	2021	2020	2022	2021	2020
<b>Home Sales</b>		<b>19</b>	<b>20</b>	<b>18</b>	<b>19</b>	<b>20</b>	<b>18</b>
Change from prior year		-5.0%	11.1%	38.5%	-5.0%	11.1%	38.5%
<b>Active Listings</b>		<b>29</b>	<b>33</b>	<b>64</b>	<b>N/A</b>	<b>N/A</b>	<b>N/A</b>
Change from prior year		-12.1%	-48.4%	-38.5%			
<b>Months' Supply</b>		<b>0.9</b>	<b>1.1</b>	<b>2.3</b>	<b>N/A</b>	<b>N/A</b>	<b>N/A</b>
Change from prior year		-18.2%	-52.2%	-41.0%			
<b>New Listings</b>		<b>27</b>	<b>25</b>	<b>32</b>	<b>27</b>	<b>25</b>	<b>32</b>
Change from prior year		8.0%	-21.9%	-33.3%	8.0%	-21.9%	-33.3%
<b>Contracts Written</b>		<b>25</b>	<b>28</b>	<b>35</b>	<b>25</b>	<b>28</b>	<b>35</b>
Change from prior year		-10.7%	-20.0%	59.1%	-10.7%	-20.0%	59.1%
<b>Pending Contracts</b>		<b>45</b>	<b>54</b>	<b>40</b>	<b>N/A</b>	<b>N/A</b>	<b>N/A</b>
Change from prior year		-16.7%	35.0%	2.6%			
<b>Sales Volume (1,000s)</b>		<b>5,400</b>	<b>5,321</b>	<b>4,714</b>	<b>5,400</b>	<b>5,321</b>	<b>4,714</b>
Change from prior year		1.5%	12.9%	34.6%	1.5%	12.9%	34.6%
Average	<b>Sale Price</b>	<b>284,200</b>	<b>266,064</b>	<b>261,903</b>	<b>284,200</b>	<b>266,064</b>	<b>261,903</b>
	Change from prior year	6.8%	1.6%	-2.8%	6.8%	1.6%	-2.8%
	<b>List Price of Actives</b>	<b>312,066</b>	<b>308,385</b>	<b>235,787</b>	<b>N/A</b>	<b>N/A</b>	<b>N/A</b>
	Change from prior year	1.2%	30.8%	-5.2%			
	<b>Days on Market</b>	<b>44</b>	<b>65</b>	<b>118</b>	<b>44</b>	<b>65</b>	<b>118</b>
Change from prior year	-32.3%	-44.9%	84.4%	-32.3%	-44.9%	84.4%	
<b>Percent of List</b>	<b>99.3%</b>	<b>97.9%</b>	<b>100.5%</b>	<b>99.3%</b>	<b>97.9%</b>	<b>100.5%</b>	
Change from prior year	1.4%	-2.6%	1.8%	1.4%	-2.6%	1.8%	
<b>Percent of Original</b>	<b>97.5%</b>	<b>95.8%</b>	<b>99.0%</b>	<b>97.5%</b>	<b>95.8%</b>	<b>99.0%</b>	
Change from prior year	1.8%	-3.2%	1.7%	1.8%	-3.2%	1.7%	
Median	<b>Sale Price</b>	<b>265,500</b>	<b>266,314</b>	<b>257,500</b>	<b>265,500</b>	<b>266,314</b>	<b>257,500</b>
	Change from prior year	-0.3%	3.4%	-3.3%	-0.3%	3.4%	-3.3%
	<b>List Price of Actives</b>	<b>325,000</b>	<b>305,000</b>	<b>215,950</b>	<b>N/A</b>	<b>N/A</b>	<b>N/A</b>
	Change from prior year	6.6%	41.2%	-10.0%			
	<b>Days on Market</b>	<b>27</b>	<b>19</b>	<b>48</b>	<b>27</b>	<b>19</b>	<b>48</b>
Change from prior year	42.1%	-60.4%	2.1%	42.1%	-60.4%	2.1%	
<b>Percent of List</b>	<b>100.0%</b>	<b>100.0%</b>	<b>98.7%</b>	<b>100.0%</b>	<b>100.0%</b>	<b>98.7%</b>	
Change from prior year	0.0%	1.3%	0.1%	0.0%	1.3%	0.1%	
<b>Percent of Original</b>	<b>98.2%</b>	<b>99.4%</b>	<b>97.0%</b>	<b>98.2%</b>	<b>99.4%</b>	<b>97.0%</b>	
Change from prior year	-1.2%	2.5%	0.1%	-1.2%	2.5%	0.1%	

Note: Year-to-date statistics cannot be calculated for Active Listings, Months' Supply and Pending Contracts.



## Pottawatomie County Closed Listings Analysis

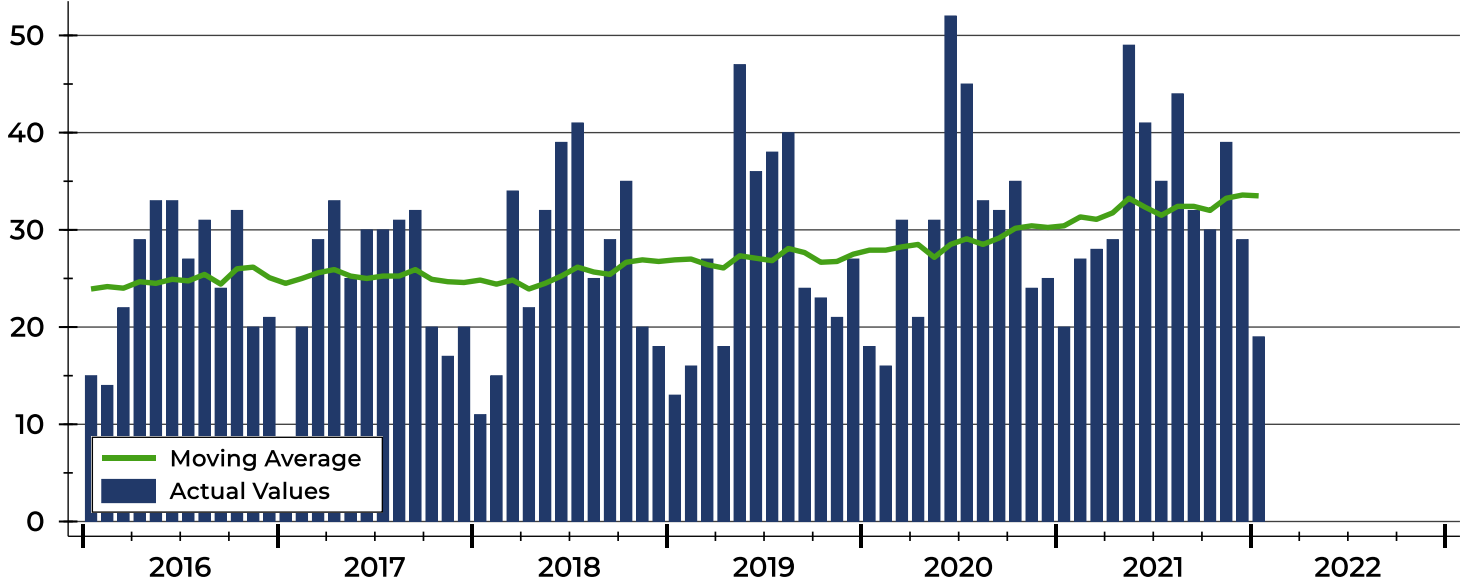
Summary Statistics for Closed Listings		2022	January 2021	Change	2022	Year-to-Date 2021	Change
Closed Listings		<b>19</b>	20	-5.0%	<b>19</b>	20	-5.0%
Volume (1,000s)		<b>5,400</b>	5,321	1.5%	<b>5,400</b>	5,321	1.5%
Months' Supply		<b>0.9</b>	1.1	-18.2%	<b>N/A</b>	N/A	N/A
Average	Sale Price	<b>284,200</b>	266,064	6.8%	<b>284,200</b>	266,064	6.8%
	Days on Market	<b>44</b>	65	-32.3%	<b>44</b>	65	-32.3%
	Percent of List	<b>99.3%</b>	97.9%	1.4%	<b>99.3%</b>	97.9%	1.4%
	Percent of Original	<b>97.5%</b>	95.8%	1.8%	<b>97.5%</b>	95.8%	1.8%
Median	Sale Price	<b>265,500</b>	266,314	-0.3%	<b>265,500</b>	266,314	-0.3%
	Days on Market	<b>27</b>	19	42.1%	<b>27</b>	19	42.1%
	Percent of List	<b>100.0%</b>	100.0%	0.0%	<b>100.0%</b>	100.0%	0.0%
	Percent of Original	<b>98.2%</b>	99.4%	-1.2%	<b>98.2%</b>	99.4%	-1.2%

A total of 19 homes sold in Pottawatomie County in January, down from 20 units in January 2021. Total sales volume rose to \$5.4 million compared to \$5.3 million in the previous year.

The median sales price in January was \$265,500, down 0.3% compared to the prior year. Median days on market was 27 days, up from 19 days in December, and up from 19 in January 2021.

## History of Closed Listings

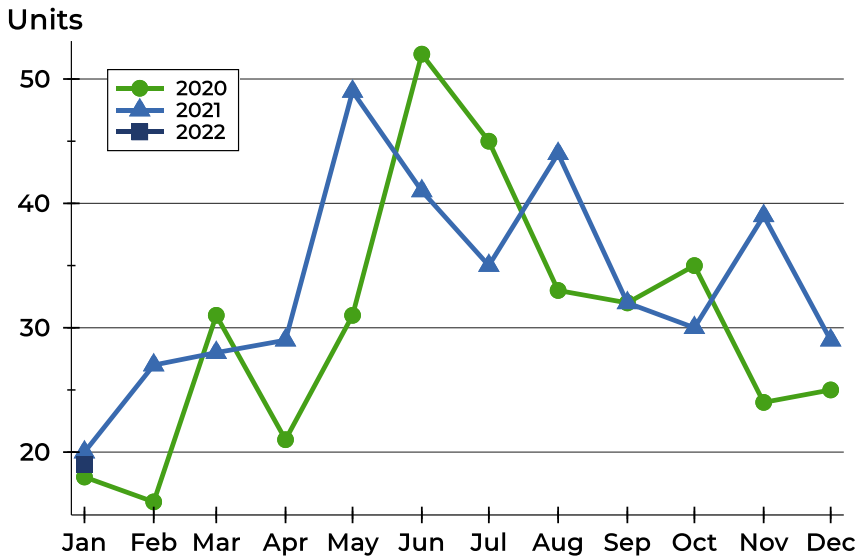
Units





## Pottawatomie County Closed Listings Analysis

### Closed Listings by Month



Month	2020	2021	2022
January	18	20	19
February	16	27	
March	31	28	
April	21	29	
May	31	49	
June	52	41	
July	45	35	
August	33	44	
September	32	32	
October	35	30	
November	24	39	
December	25	29	

### Closed Listings by Price Range

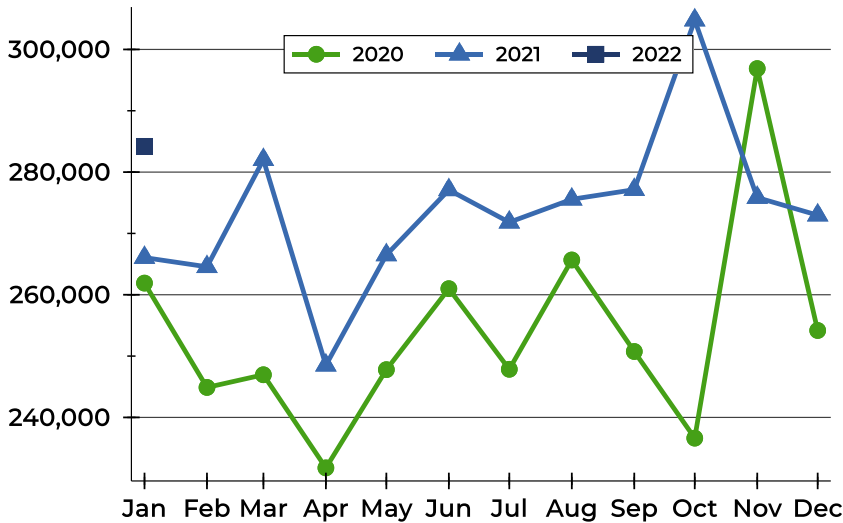
Price Range	Sales		Months' Supply	Sale Price		Days on Market		Price as % of List		Price as % of Orig.	
	Number	Percent		Average	Median	Avg.	Med.	Avg.	Med.	Avg.	Med.
Below \$25,000	0	0.0%	N/A	N/A	N/A	N/A	N/A	N/A	N/A	N/A	N/A
\$25,000-\$49,999	0	0.0%	N/A	N/A	N/A	N/A	N/A	N/A	N/A	N/A	N/A
\$50,000-\$99,999	1	5.3%	0.8	75,000	75,000	15	15	100.0%	100.0%	100.0%	100.0%
\$100,000-\$124,999	0	0.0%	N/A	N/A	N/A	N/A	N/A	N/A	N/A	N/A	N/A
\$125,000-\$149,999	1	5.3%	0.9	140,000	140,000	27	27	93.3%	93.3%	93.3%	93.3%
\$150,000-\$174,999	1	5.3%	1.5	150,000	150,000	166	166	96.2%	96.2%	85.7%	85.7%
\$175,000-\$199,999	2	10.5%	0.0	194,000	194,000	58	58	97.3%	97.3%	92.6%	92.6%
\$200,000-\$249,999	2	10.5%	0.9	240,500	240,500	24	24	98.8%	98.8%	97.3%	97.3%
\$250,000-\$299,999	4	21.1%	0.3	262,375	262,250	13	1	101.6%	101.9%	100.0%	101.9%
\$300,000-\$399,999	6	31.6%	1.1	359,900	364,450	38	30	100.0%	100.0%	99.3%	99.1%
\$400,000-\$499,999	1	5.3%	1.6	407,000	407,000	30	30	98.1%	98.1%	98.1%	98.1%
\$500,000-\$749,999	1	5.3%	1.8	549,900	549,900	164	164	100.0%	100.0%	100.0%	100.0%
\$750,000-\$999,999	0	0.0%	N/A	N/A	N/A	N/A	N/A	N/A	N/A	N/A	N/A
\$1,000,000 and up	0	0.0%	N/A	N/A	N/A	N/A	N/A	N/A	N/A	N/A	N/A



## Pottawatomie County Closed Listings Analysis

### Average Price

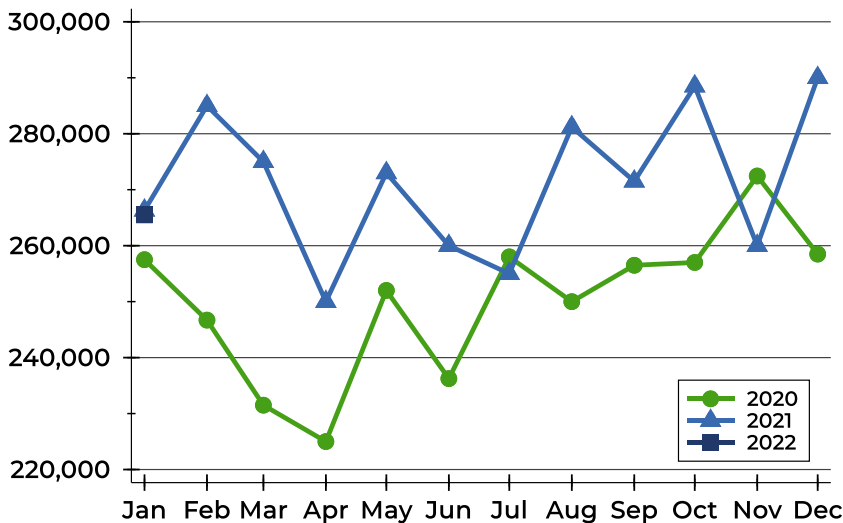
Dollars



Month	2020	2021	2022
<b>January</b>	261,903	266,064	<b>284,200</b>
<b>February</b>	244,894	264,562	
<b>March</b>	246,959	282,018	
<b>April</b>	231,776	248,504	
<b>May</b>	247,790	266,490	
<b>June</b>	260,992	277,099	
<b>July</b>	247,853	271,821	
<b>August</b>	265,671	275,567	
<b>September</b>	250,749	277,140	
<b>October</b>	236,625	304,775	
<b>November</b>	296,878	275,848	
<b>December</b>	254,176	272,976	

### Median Price

Dollars

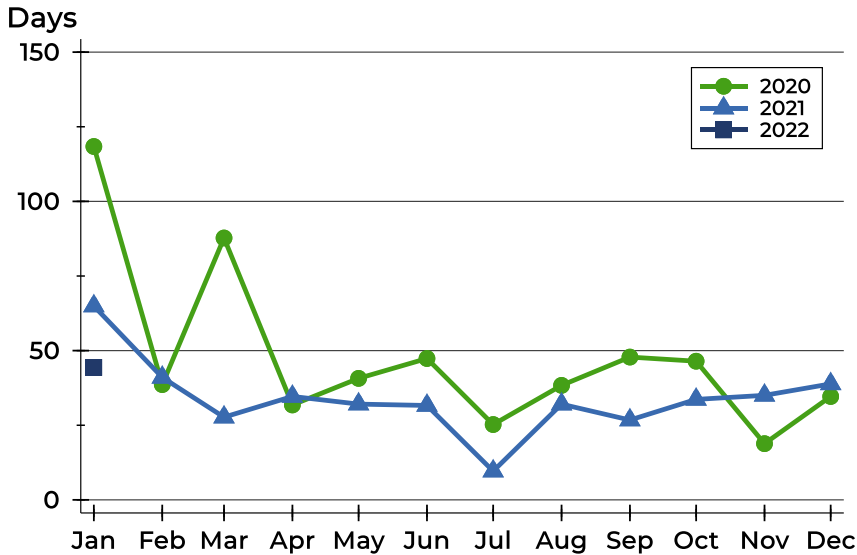


Month	2020	2021	2022
<b>January</b>	257,500	266,314	<b>265,500</b>
<b>February</b>	246,700	285,000	
<b>March</b>	231,500	275,000	
<b>April</b>	225,000	250,000	
<b>May</b>	252,000	273,000	
<b>June</b>	236,250	260,000	
<b>July</b>	258,000	255,000	
<b>August</b>	250,000	281,200	
<b>September</b>	256,500	271,500	
<b>October</b>	257,000	288,500	
<b>November</b>	272,450	260,000	
<b>December</b>	258,500	290,000	



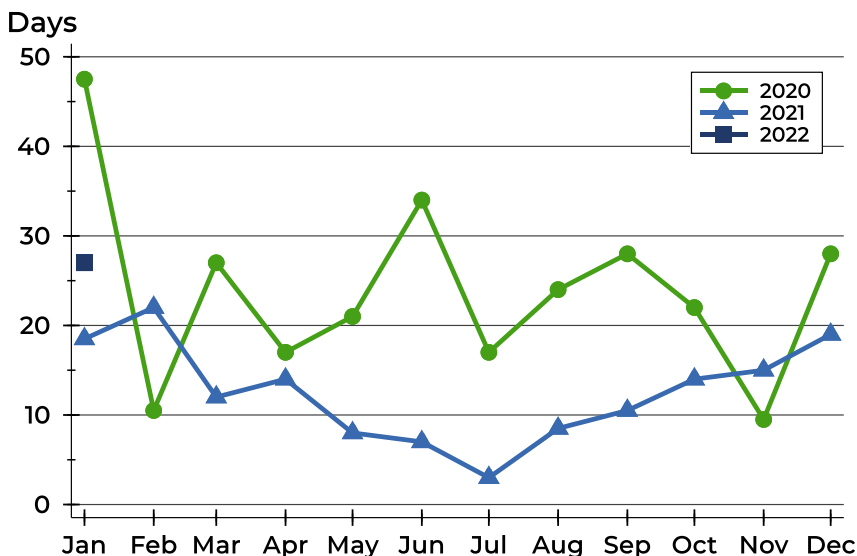
## Pottawatomie County Closed Listings Analysis

### Average DOM



Month	2020	2021	2022
January	118	65	<b>44</b>
February	39	41	
March	88	28	
April	32	35	
May	41	32	
June	47	32	
July	25	10	
August	38	32	
September	48	27	
October	46	34	
November	19	35	
December	35	39	

### Median DOM



Month	2020	2021	2022
January	48	19	<b>27</b>
February	11	22	
March	27	12	
April	17	14	
May	21	8	
June	34	7	
July	17	3	
August	24	9	
September	28	11	
October	22	14	
November	10	15	
December	28	19	



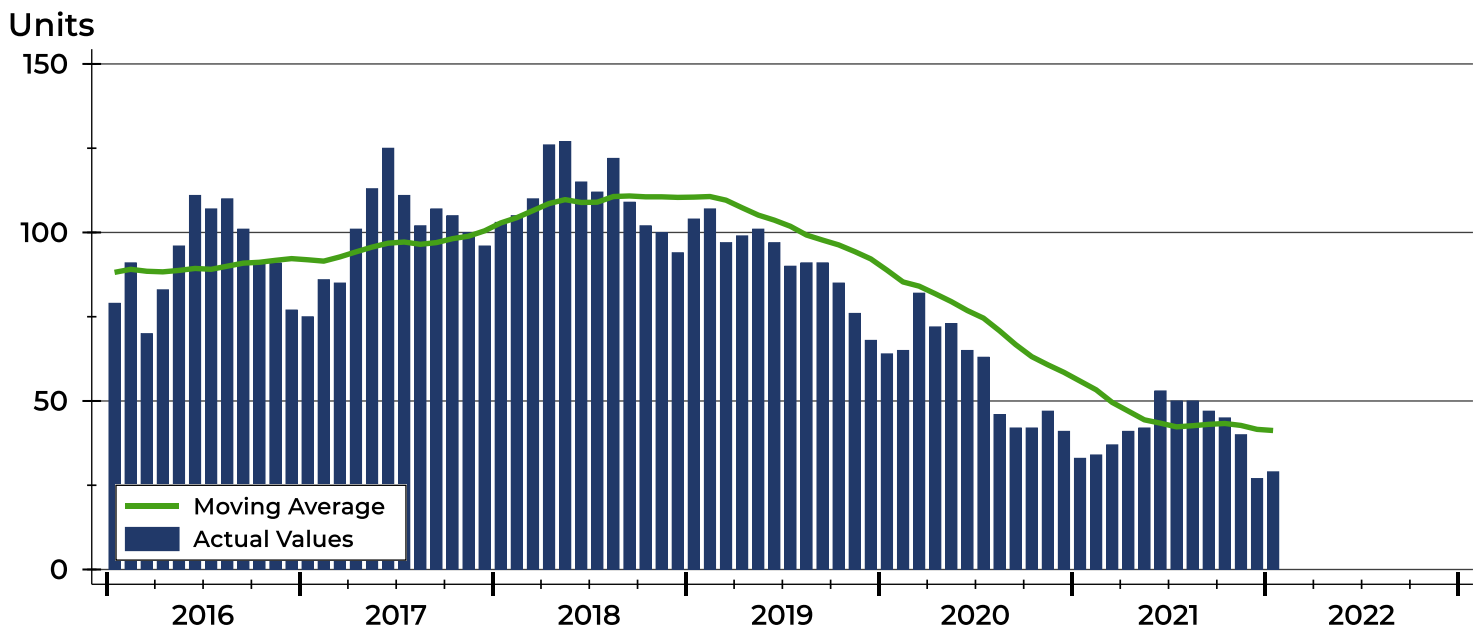
## Pottawatomie County Active Listings Analysis

Summary Statistics for Active Listings		2022	End of January 2021	Change
Active Listings		<b>29</b>	33	-12.1%
Volume (1,000s)		<b>9,050</b>	10,177	-11.1%
Months' Supply		<b>0.9</b>	1.1	-18.2%
Average	List Price	<b>312,066</b>	308,385	1.2%
	Days on Market	<b>65</b>	84	-22.6%
	Percent of Original	<b>99.6%</b>	99.2%	0.4%
Median	List Price	<b>325,000</b>	305,000	6.6%
	Days on Market	<b>36</b>	52	-30.8%
	Percent of Original	<b>100.0%</b>	100.0%	0.0%

A total of 29 homes were available for sale in Pottawatomie County at the end of January. This represents a 0.9 months' supply of active listings.

The median list price of homes on the market at the end of January was \$325,000, up 6.6% from 2021. The typical time on market for active listings was 36 days, down from 52 days a year earlier.

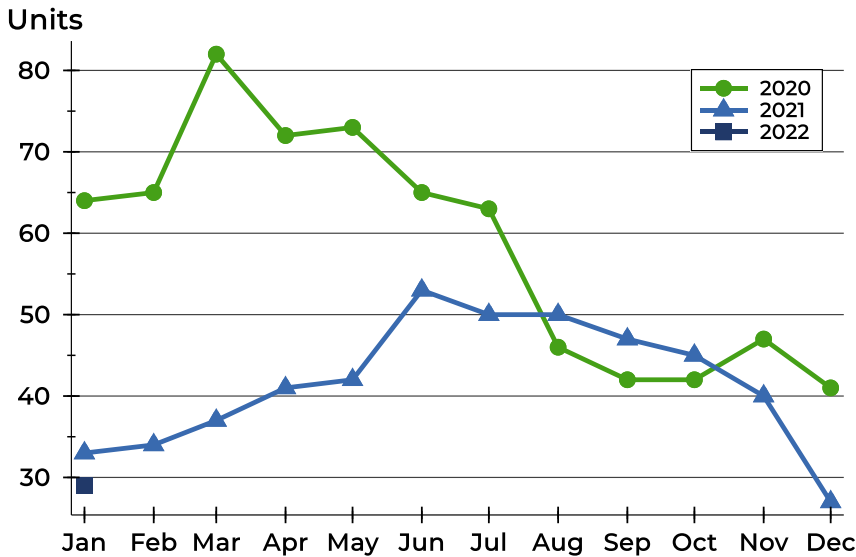
## History of Active Listings





## Pottawatomie County Active Listings Analysis

### Active Listings by Month



Month	2020	2021	2022
<b>January</b>	64	33	<b>29</b>
<b>February</b>	65	34	
<b>March</b>	82	37	
<b>April</b>	72	41	
<b>May</b>	73	42	
<b>June</b>	65	53	
<b>July</b>	63	50	
<b>August</b>	46	50	
<b>September</b>	42	47	
<b>October</b>	42	45	
<b>November</b>	47	40	
<b>December</b>	41	27	

### Active Listings by Price Range

Price Range	Active Listings		Months' Supply	List Price		Days on Market		Price as % of Orig.	
	Number	Percent		Average	Median	Avg.	Med.	Avg.	Med.
Below \$25,000	0	0.0%	N/A	N/A	N/A	N/A	N/A	N/A	N/A
\$25,000-\$49,999	0	0.0%	N/A	N/A	N/A	N/A	N/A	N/A	N/A
\$50,000-\$99,999	1	3.4%	0.8	89,000	89,000	36	36	100.0%	100.0%
\$100,000-\$124,999	1	3.4%	N/A	115,000	115,000	15	15	100.0%	100.0%
\$125,000-\$149,999	1	3.4%	0.9	125,000	125,000	12	12	100.0%	100.0%
\$150,000-\$174,999	3	10.3%	1.5	164,267	162,900	65	31	100.0%	100.0%
\$175,000-\$199,999	0	0.0%	0.0	N/A	N/A	N/A	N/A	N/A	N/A
\$200,000-\$249,999	5	17.2%	0.9	216,880	209,500	122	160	100.0%	100.0%
\$250,000-\$299,999	2	6.9%	0.3	287,450	287,450	60	60	100.0%	100.0%
\$300,000-\$399,999	10	34.5%	1.1	357,750	354,900	64	83	99.1%	100.0%
\$400,000-\$499,999	4	13.8%	1.6	436,575	433,200	57	52	100.0%	100.0%
\$500,000-\$749,999	2	6.9%	1.8	622,500	622,500	16	16	98.3%	98.3%
\$750,000-\$999,999	0	0.0%	N/A	N/A	N/A	N/A	N/A	N/A	N/A
\$1,000,000 and up	0	0.0%	N/A	N/A	N/A	N/A	N/A	N/A	N/A

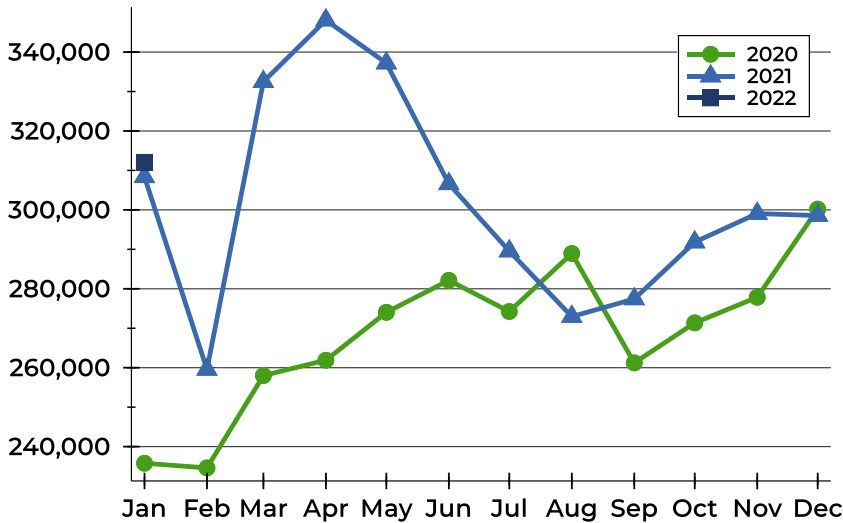




## Pottawatomie County Active Listings Analysis

### Average Price

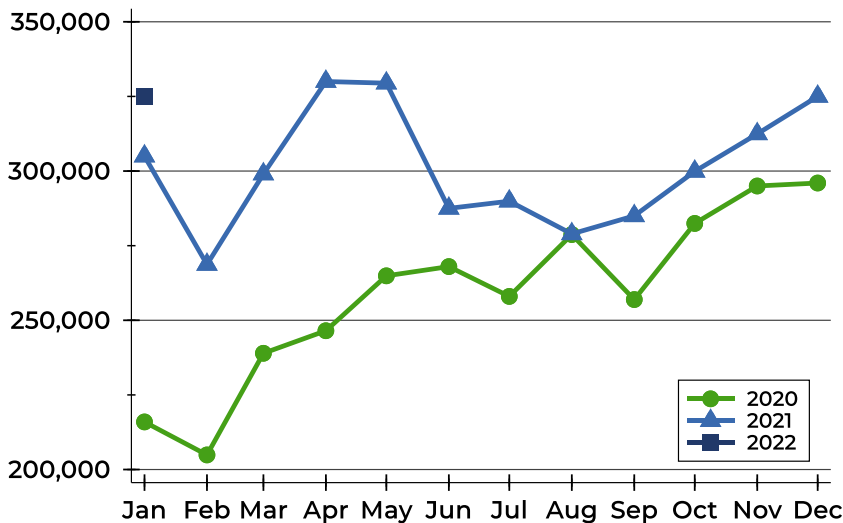
Dollars



Month	2020	2021	2022
<b>January</b>	235,787	308,385	<b>312,066</b>
<b>February</b>	234,610	259,565	
<b>March</b>	258,014	332,489	
<b>April</b>	261,901	348,095	
<b>May</b>	274,036	337,200	
<b>June</b>	282,150	306,614	
<b>July</b>	274,238	289,574	
<b>August</b>	288,946	272,958	
<b>September</b>	261,224	277,430	
<b>October</b>	271,369	291,840	
<b>November</b>	277,857	299,078	
<b>December</b>	300,205	298,563	

### Median Price

Dollars

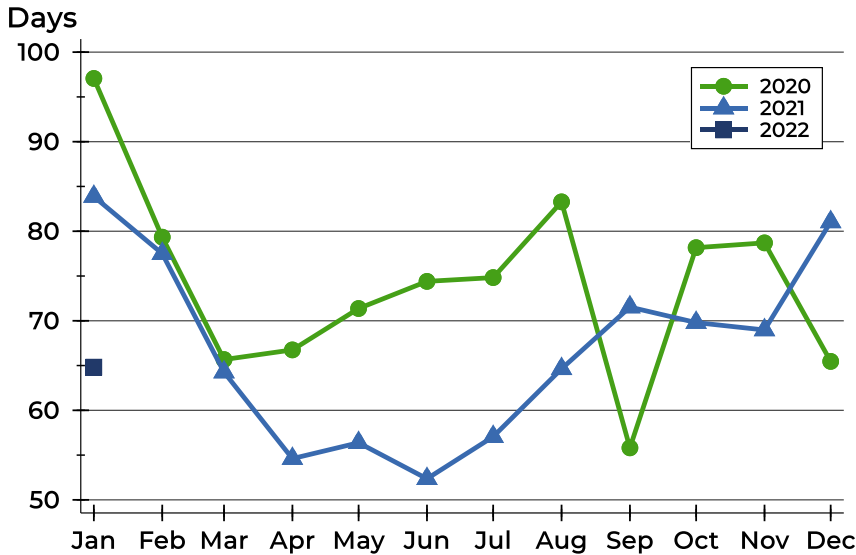


Month	2020	2021	2022
<b>January</b>	215,950	305,000	<b>325,000</b>
<b>February</b>	204,900	268,700	
<b>March</b>	238,950	299,000	
<b>April</b>	246,500	330,000	
<b>May</b>	264,900	329,450	
<b>June</b>	268,000	287,500	
<b>July</b>	258,000	289,900	
<b>August</b>	278,725	278,950	
<b>September</b>	256,950	285,000	
<b>October</b>	282,450	299,900	
<b>November</b>	295,000	312,450	
<b>December</b>	296,000	325,000	



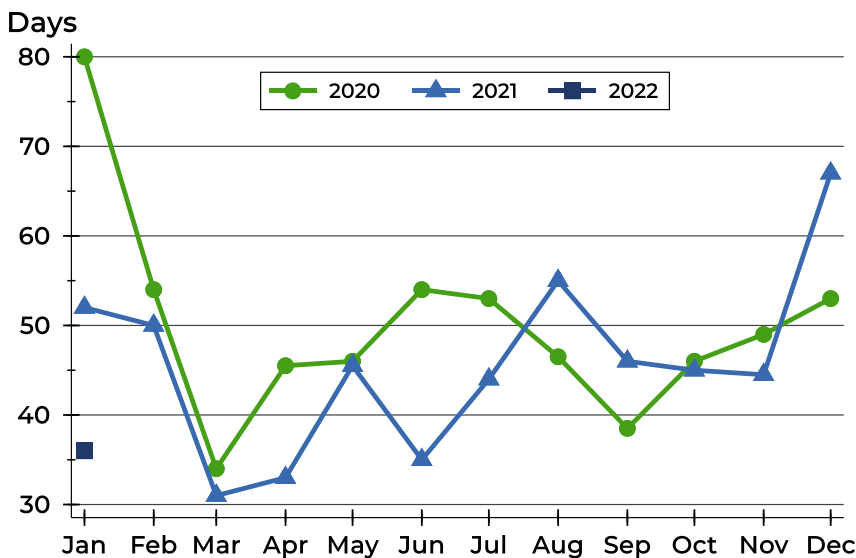
## Pottawatomie County Active Listings Analysis

### Average DOM



Month	2020	2021	2022
January	97	84	<b>65</b>
February	79	78	
March	66	64	
April	67	55	
May	71	56	
June	74	52	
July	75	57	
August	83	65	
September	56	72	
October	78	70	
November	79	69	
December	65	81	

### Median DOM

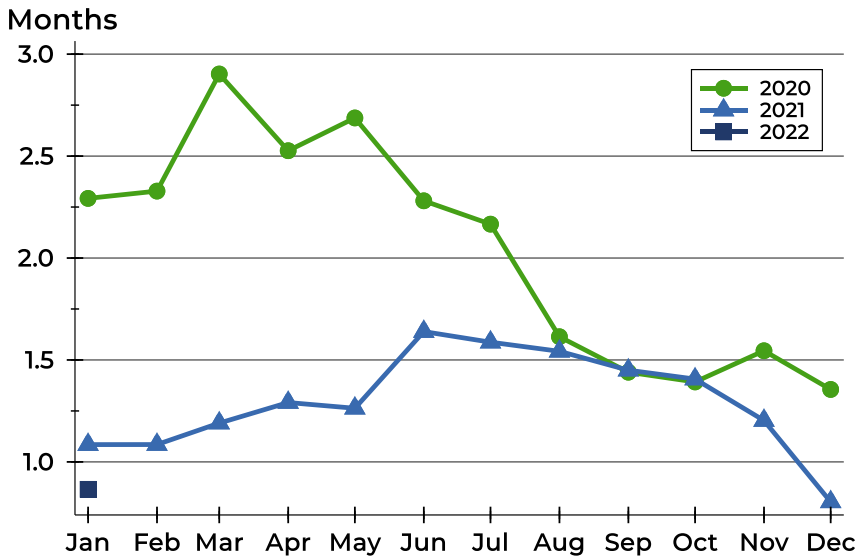


Month	2020	2021	2022
January	80	52	<b>36</b>
February	54	50	
March	34	31	
April	46	33	
May	46	46	
June	54	35	
July	53	44	
August	47	55	
September	39	46	
October	46	45	
November	49	45	
December	53	67	



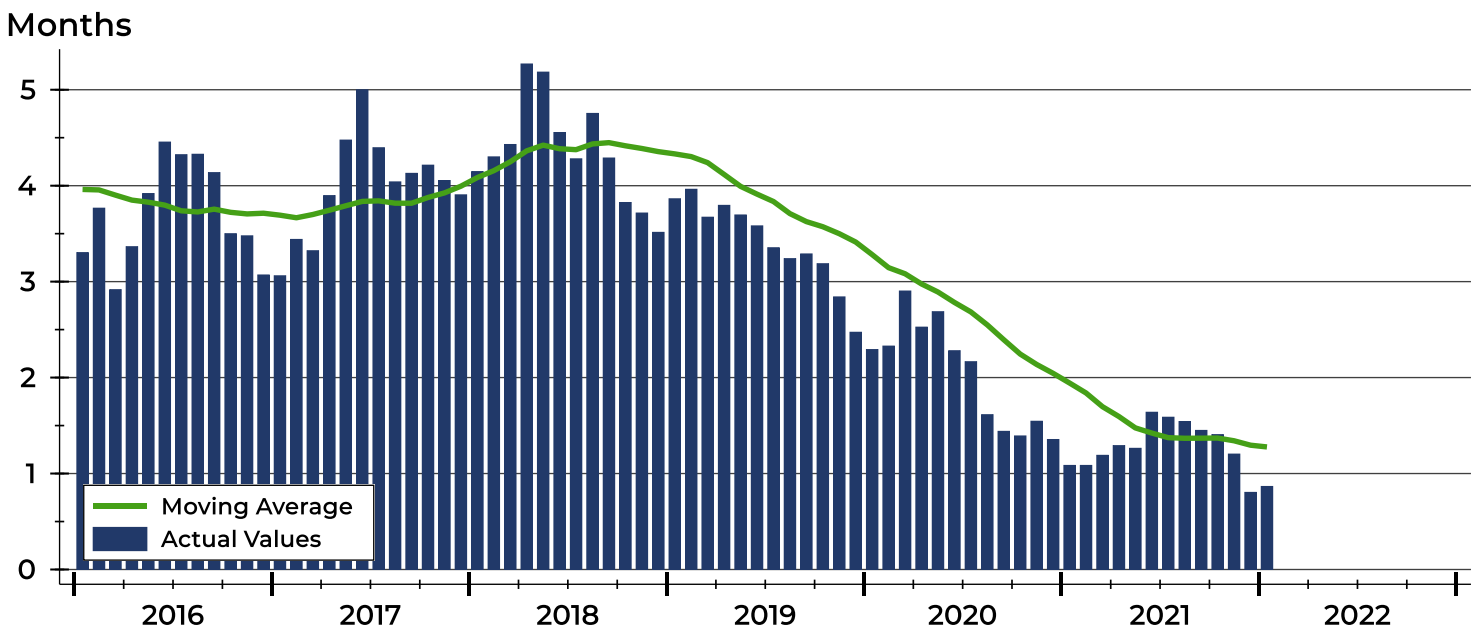
# Pottawatomie County Months' Supply Analysis

## Months' Supply by Month



Month	2020	2021	2022
January	2.3	1.1	<b>0.9</b>
February	2.3	1.1	
March	2.9	1.2	
April	2.5	1.3	
May	2.7	1.3	
June	2.3	1.6	
July	2.2	1.6	
August	1.6	1.5	
September	1.4	1.4	
October	1.4	1.4	
November	1.5	1.2	
December	1.4	0.8	

## History of Month's Supply





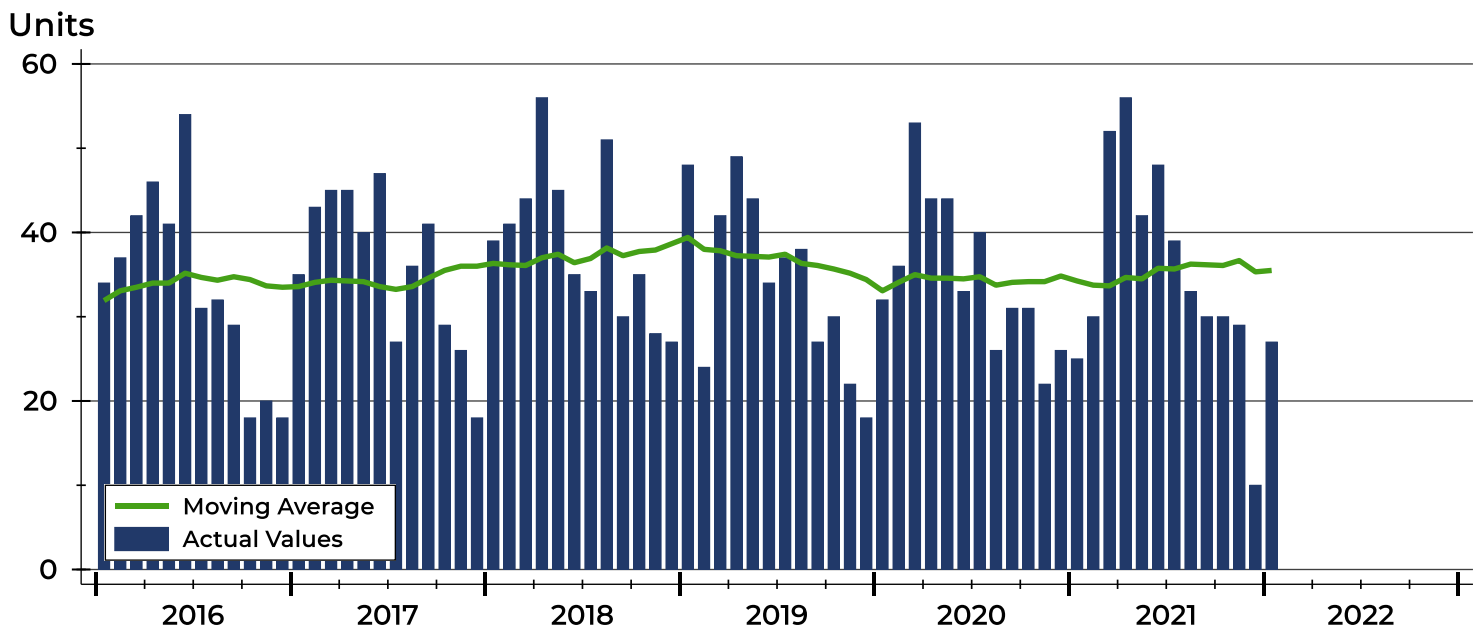
## Pottawatomie County New Listings Analysis

Summary Statistics for New Listings		2022	January 2021	Change
Current Month	New Listings	<b>27</b>	25	8.0%
	Volume (1,000s)	<b>8,810</b>	6,941	26.9%
	Average List Price	<b>326,285</b>	277,640	17.5%
	Median List Price	<b>319,900</b>	270,000	18.5%
Year-to-Date	New Listings	<b>27</b>	25	8.0%
	Volume (1,000s)	<b>8,810</b>	6,941	26.9%
	Average List Price	<b>326,285</b>	277,640	17.5%
	Median List Price	<b>319,900</b>	270,000	18.5%

A total of 27 new listings were added in Pottawatomie County during January, up 8.0% from the same month in 2021.

The median list price of these homes was \$319,900 up from \$270,000 in 2021.

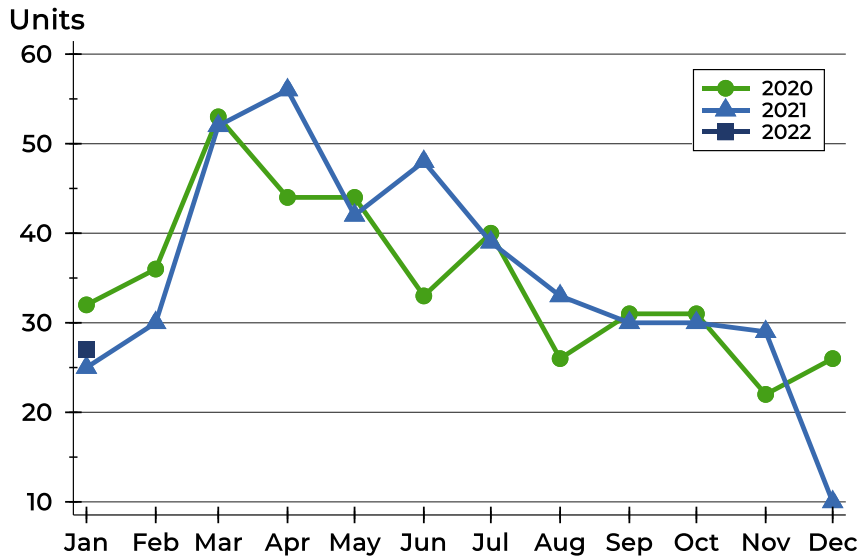
## History of New Listings





## Pottawatomie County New Listings Analysis

### New Listings by Month



Month	2020	2021	2022
January	32	25	<b>27</b>
February	36	30	
March	53	52	
April	44	56	
May	44	42	
June	33	48	
July	40	39	
August	26	33	
September	31	30	
October	31	30	
November	22	29	
December	26	10	

### New Listings by Price Range

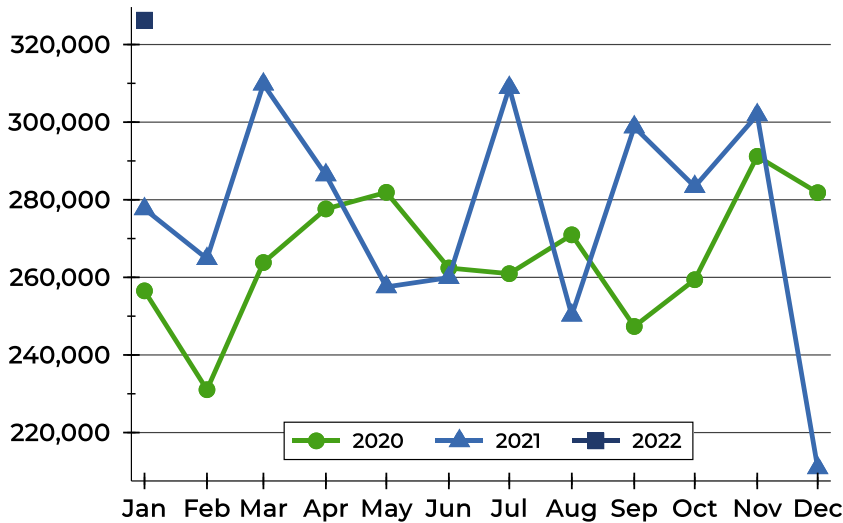
Price Range	New Listings		List Price		Days on Market		Price as % of Orig.	
	Number	Percent	Average	Median	Avg.	Med.	Avg.	Med.
Below \$25,000	0	0.0%	N/A	N/A	N/A	N/A	N/A	N/A
\$25,000-\$49,999	0	0.0%	N/A	N/A	N/A	N/A	N/A	N/A
\$50,000-\$99,999	0	0.0%	N/A	N/A	N/A	N/A	N/A	N/A
\$100,000-\$124,999	1	3.7%	115,000	115,000	21	21	100.0%	100.0%
\$125,000-\$149,999	0	0.0%	N/A	N/A	N/A	N/A	N/A	N/A
\$150,000-\$174,999	2	7.4%	159,950	159,950	19	19	100.0%	100.0%
\$175,000-\$199,999	1	3.7%	189,900	189,900	8	8	104.8%	104.8%
\$200,000-\$249,999	3	11.1%	226,000	229,000	9	5	100.0%	100.0%
\$250,000-\$299,999	5	18.5%	273,780	275,000	6	6	100.0%	100.0%
\$300,000-\$399,999	8	29.6%	342,838	342,000	10	8	99.9%	100.0%
\$400,000-\$499,999	5	18.5%	430,060	424,900	9	8	100.0%	100.0%
\$500,000-\$749,999	2	7.4%	622,500	622,500	22	22	98.3%	98.3%
\$750,000-\$999,999	0	0.0%	N/A	N/A	N/A	N/A	N/A	N/A
\$1,000,000 and up	0	0.0%	N/A	N/A	N/A	N/A	N/A	N/A



## Pottawatomie County New Listings Analysis

### Average Price

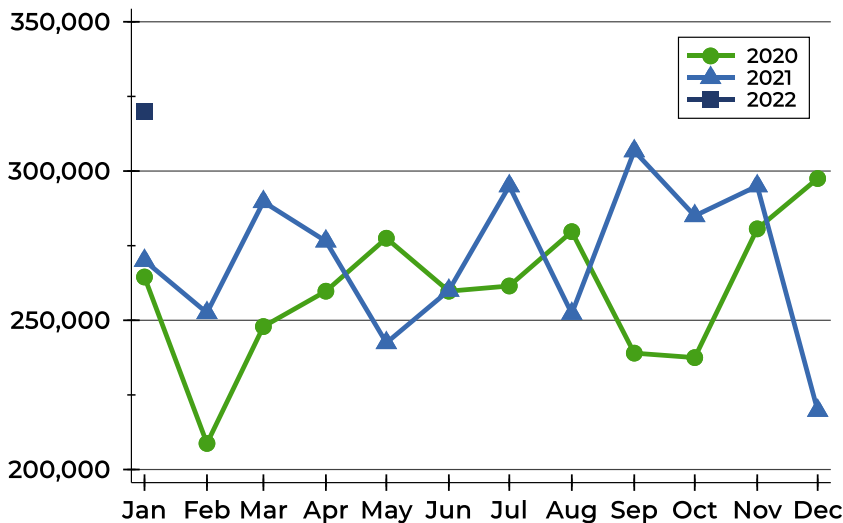
Dollars



Month	2020	2021	2022
<b>January</b>	256,523	277,640	<b>326,285</b>
<b>February</b>	231,047	264,803	
<b>March</b>	263,816	309,779	
<b>April</b>	277,634	286,386	
<b>May</b>	281,910	257,544	
<b>June</b>	262,417	259,931	
<b>July</b>	260,954	308,895	
<b>August</b>	270,965	250,224	
<b>September</b>	247,342	298,736	
<b>October</b>	259,397	283,383	
<b>November</b>	291,191	301,862	
<b>December</b>	281,819	210,905	

### Median Price

Dollars



Month	2020	2021	2022
<b>January</b>	264,500	270,000	<b>319,900</b>
<b>February</b>	208,750	252,500	
<b>March</b>	247,900	289,700	
<b>April</b>	259,750	276,500	
<b>May</b>	277,500	242,450	
<b>June</b>	259,750	260,000	
<b>July</b>	261,500	295,000	
<b>August</b>	279,700	252,250	
<b>September</b>	239,000	306,725	
<b>October</b>	237,500	285,000	
<b>November</b>	280,635	295,000	
<b>December</b>	297,500	219,750	



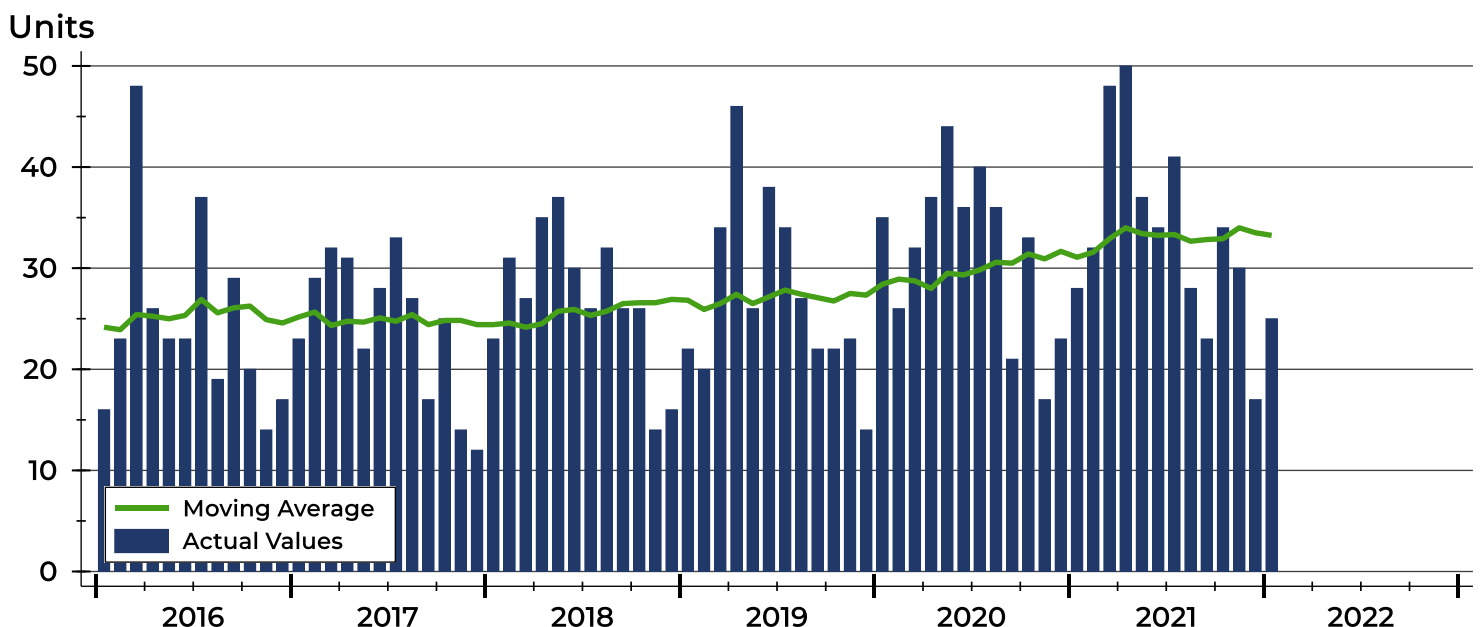
## Pottawatomie County Contracts Written Analysis

Summary Statistics for Contracts Written		January 2021			Year-to-Date 2021		
		2022	2021	Change	2022	2021	Change
Contracts Written		<b>25</b>	28	-10.7%	<b>25</b>	28	-10.7%
Volume (1,000s)		<b>7,564</b>	7,328	3.2%	<b>7,564</b>	7,328	3.2%
Average	Sale Price	<b>302,548</b>	261,718	15.6%	<b>302,548</b>	261,718	15.6%
	Days on Market	<b>35</b>	39	-10.3%	<b>35</b>	39	-10.3%
	Percent of Original	<b>99.9%</b>	97.6%	2.4%	<b>99.9%</b>	97.6%	2.4%
Median	Sale Price	<b>315,000</b>	250,200	25.9%	<b>315,000</b>	250,200	25.9%
	Days on Market	<b>8</b>	22	-63.6%	<b>8</b>	22	-63.6%
	Percent of Original	<b>100.0%</b>	100.0%	0.0%	<b>100.0%</b>	100.0%	0.0%

A total of 25 contracts for sale were written in Pottawatomie County during the month of January, down from 28 in 2021. The median list price of these homes was \$315,000, up from \$250,200 the prior year.

Half of the homes that went under contract in January were on the market less than 8 days, compared to 22 days in January 2021.

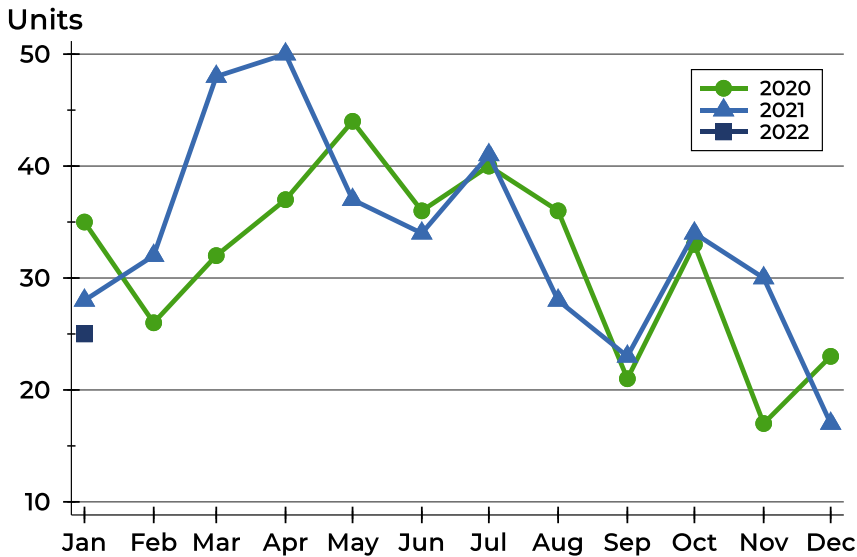
## History of Contracts Written





## Pottawatomie County Contracts Written Analysis

### Contracts Written by Month



Month	2020	2021	2022
<b>January</b>	35	28	<b>25</b>
<b>February</b>	26	32	
<b>March</b>	32	48	
<b>April</b>	37	50	
<b>May</b>	44	37	
<b>June</b>	36	34	
<b>July</b>	40	41	
<b>August</b>	36	28	
<b>September</b>	21	23	
<b>October</b>	33	34	
<b>November</b>	17	30	
<b>December</b>	23	17	

### Contracts Written by Price Range

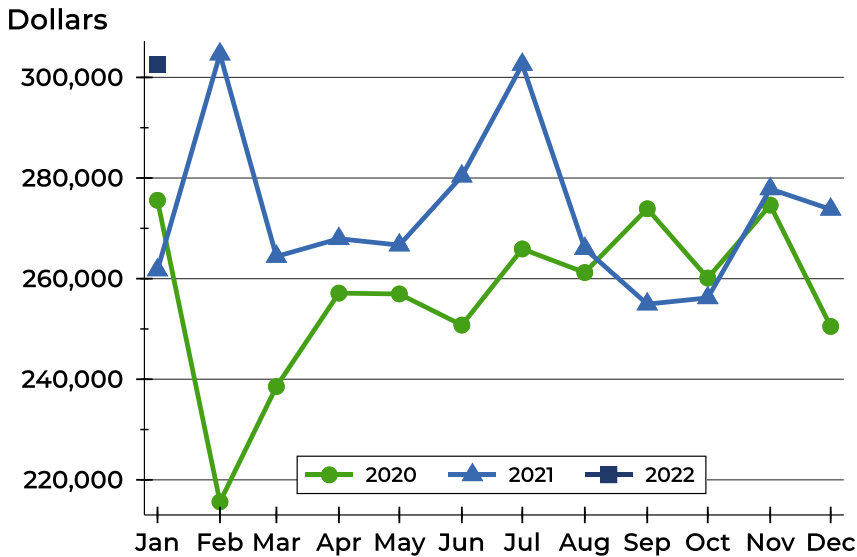
Price Range	Contracts Written		List Price		Days on Market		Price as % of Orig.	
	Number	Percent	Average	Median	Avg.	Med.	Avg.	Med.
Below \$25,000	0	0.0%	N/A	N/A	N/A	N/A	N/A	N/A
\$25,000-\$49,999	0	0.0%	N/A	N/A	N/A	N/A	N/A	N/A
\$50,000-\$99,999	0	0.0%	N/A	N/A	N/A	N/A	N/A	N/A
\$100,000-\$124,999	0	0.0%	N/A	N/A	N/A	N/A	N/A	N/A
\$125,000-\$149,999	1	4.0%	135,000	135,000	105	105	100.0%	100.0%
\$150,000-\$174,999	1	4.0%	164,900	164,900	3	3	100.0%	100.0%
\$175,000-\$199,999	2	8.0%	189,950	189,950	8	8	102.4%	102.4%
\$200,000-\$249,999	2	8.0%	239,000	239,000	11	11	100.0%	100.0%
\$250,000-\$299,999	6	24.0%	274,733	277,250	13	8	99.7%	100.0%
\$300,000-\$399,999	10	40.0%	347,360	342,450	63	21	99.3%	100.0%
\$400,000-\$499,999	3	12.0%	427,967	424,900	5	5	100.0%	100.0%
\$500,000-\$749,999	0	0.0%	N/A	N/A	N/A	N/A	N/A	N/A
\$750,000-\$999,999	0	0.0%	N/A	N/A	N/A	N/A	N/A	N/A
\$1,000,000 and up	0	0.0%	N/A	N/A	N/A	N/A	N/A	N/A





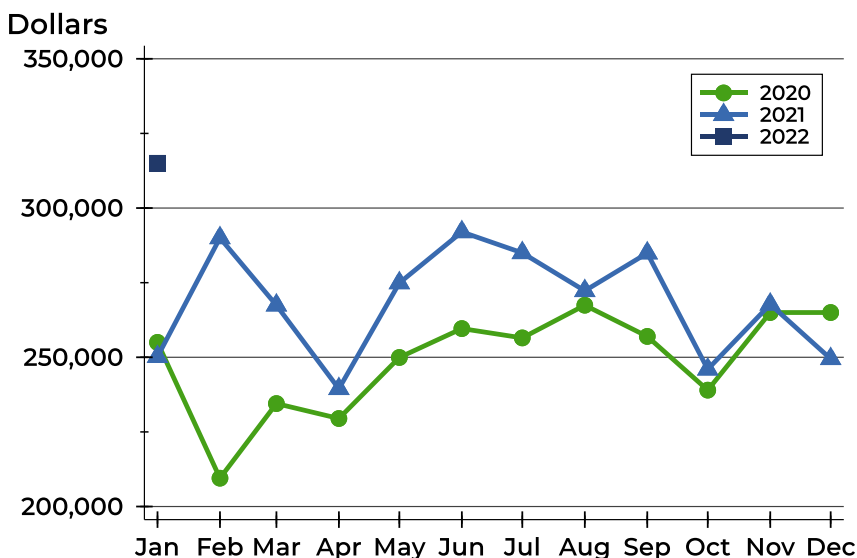
## Pottawatomie County Contracts Written Analysis

### Average Price



Month	2020	2021	2022
<b>January</b>	275,577	261,718	<b>302,548</b>
<b>February</b>	215,623	304,628	
<b>March</b>	238,542	264,400	
<b>April</b>	257,123	267,945	
<b>May</b>	256,959	266,667	
<b>June</b>	250,765	280,366	
<b>July</b>	265,908	302,572	
<b>August</b>	261,211	265,977	
<b>September</b>	273,890	254,934	
<b>October</b>	260,115	256,179	
<b>November</b>	274,623	277,837	
<b>December</b>	250,496	273,779	

### Median Price

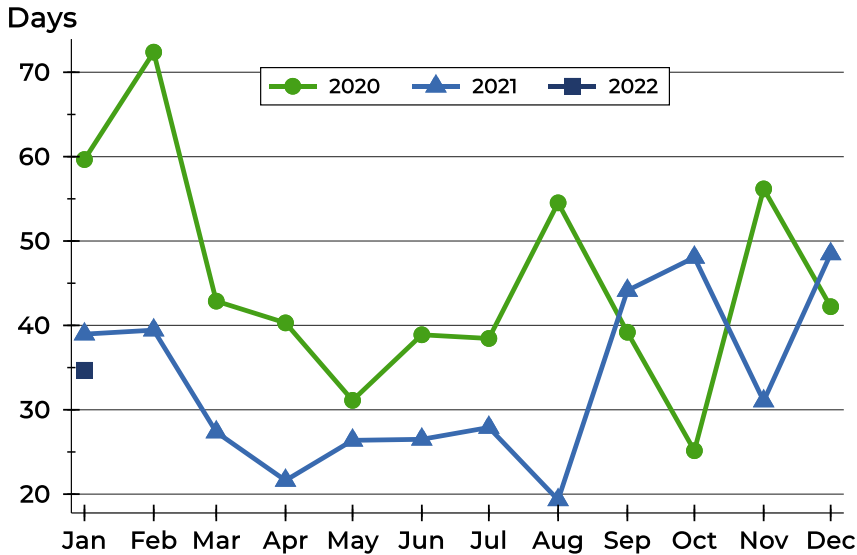


Month	2020	2021	2022
<b>January</b>	255,000	250,200	<b>315,000</b>
<b>February</b>	209,500	290,000	
<b>March</b>	234,500	267,450	
<b>April</b>	229,500	239,450	
<b>May</b>	249,945	274,900	
<b>June</b>	259,625	292,000	
<b>July</b>	256,500	285,000	
<b>August</b>	267,450	272,280	
<b>September</b>	257,000	284,900	
<b>October</b>	239,000	246,000	
<b>November</b>	265,000	267,750	
<b>December</b>	265,000	249,500	



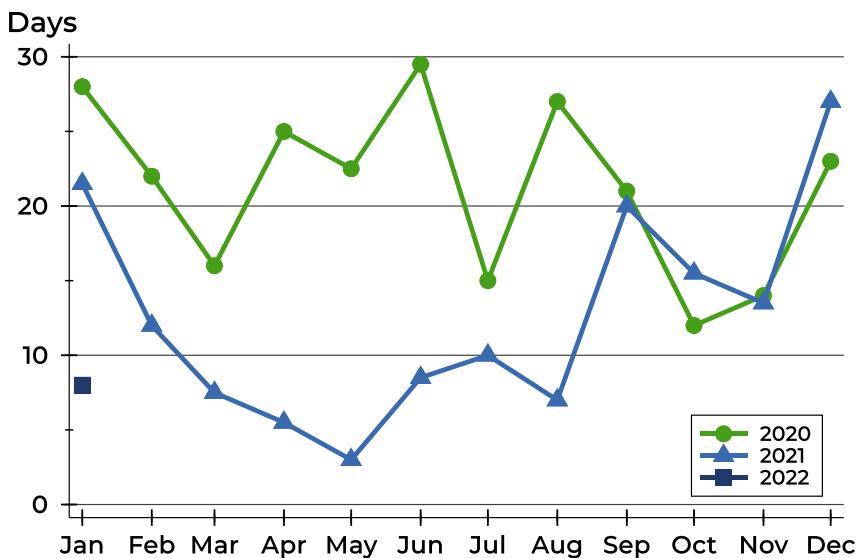
## Pottawatomie County Contracts Written Analysis

### Average DOM



Month	2020	2021	2022
January	60	39	<b>35</b>
February	72	39	
March	43	27	
April	40	22	
May	31	26	
June	39	27	
July	38	28	
August	55	19	
September	39	44	
October	25	48	
November	56	31	
December	42	48	

### Median DOM



Month	2020	2021	2022
January	28	22	<b>8</b>
February	22	12	
March	16	8	
April	25	6	
May	23	3	
June	30	9	
July	15	10	
August	27	7	
September	21	20	
October	12	16	
November	14	14	
December	23	27	



## Pottawatomie County Pending Contracts Analysis

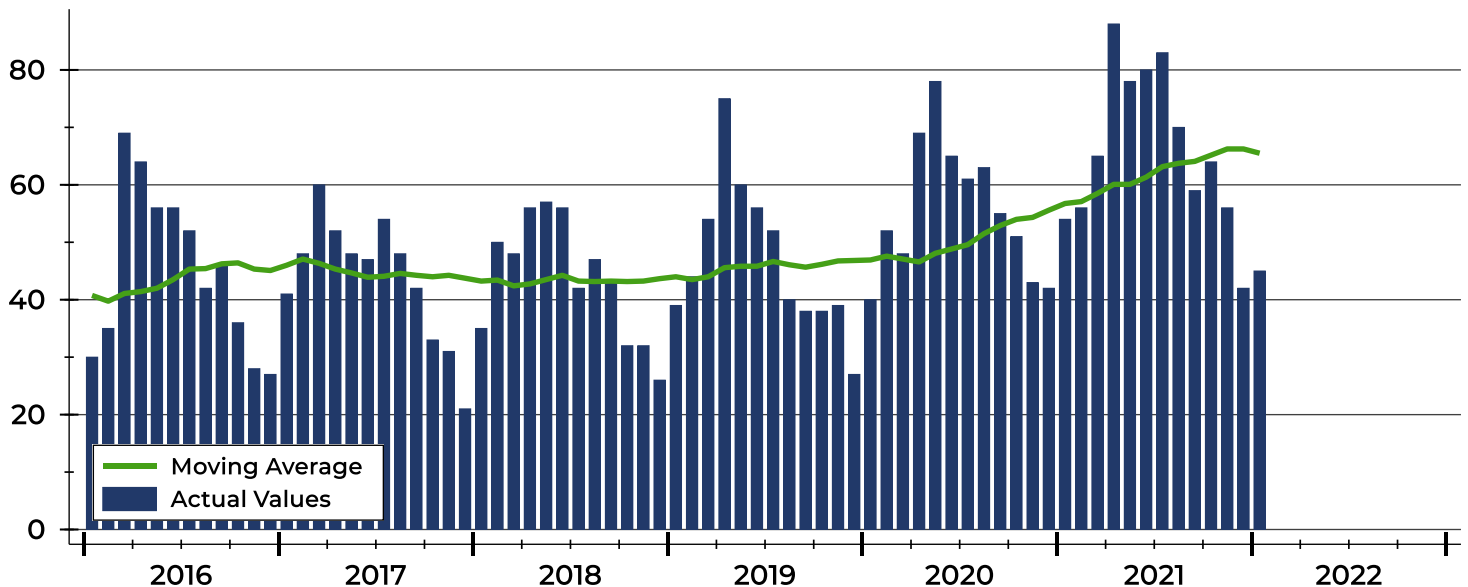
Summary Statistics for Pending Contracts		End of January		
		2022	2021	Change
Pending Contracts		<b>45</b>	54	-16.7%
Volume (1,000s)		<b>12,676</b>	13,693	-7.4%
Average	List Price	<b>281,700</b>	253,565	11.1%
	Days on Market	<b>46</b>	45	2.2%
	Percent of Original	<b>100.5%</b>	99.5%	1.0%
Median	List Price	<b>282,500</b>	247,750	14.0%
	Days on Market	<b>9</b>	33	-72.7%
	Percent of Original	<b>100.0%</b>	100.0%	0.0%

A total of 45 listings in Pottawatomie County had contracts pending at the end of January, down from 54 contracts pending at the end of January 2021.

Pending contracts reflect listings with a contract in place at the end of the month. In contrast, contracts written measures the number of listings put under contract during the month.

## History of Pending Contracts

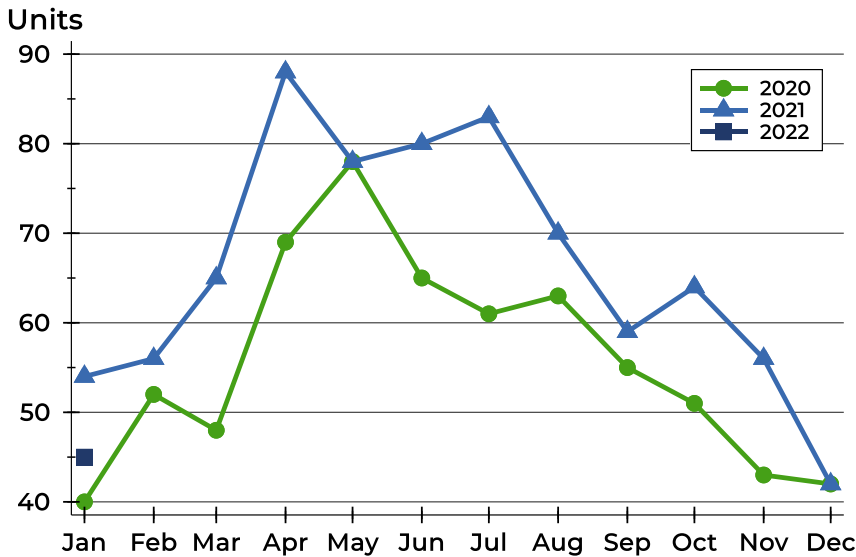
Units





## Pottawatomie County Pending Contracts Analysis

### Pending Contracts by Month



Month	2020	2021	2022
<b>January</b>	40	54	<b>45</b>
<b>February</b>	52	56	
<b>March</b>	48	65	
<b>April</b>	69	88	
<b>May</b>	78	78	
<b>June</b>	65	80	
<b>July</b>	61	83	
<b>August</b>	63	70	
<b>September</b>	55	59	
<b>October</b>	51	64	
<b>November</b>	43	56	
<b>December</b>	42	42	

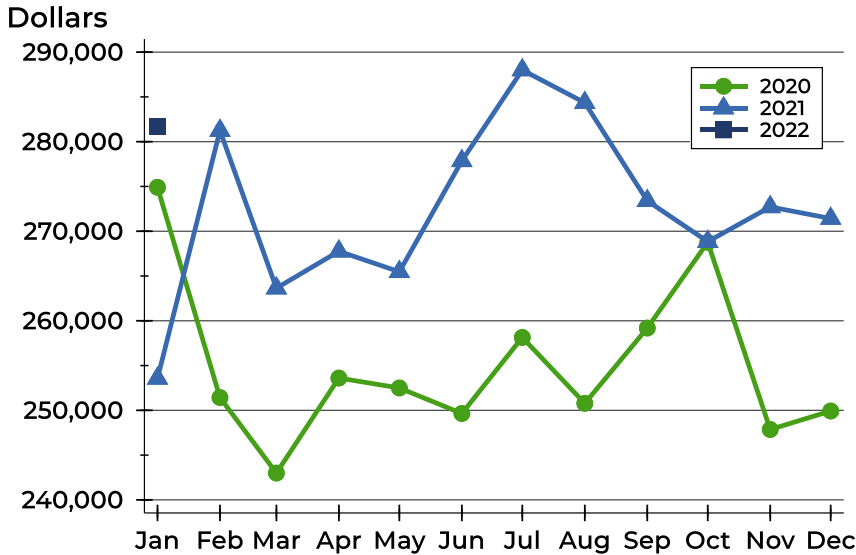
### Pending Contracts by Price Range

Price Range	Pending Contracts		List Price		Days on Market		Price as % of Orig.	
	Number	Percent	Average	Median	Avg.	Med.	Avg.	Med.
Below \$25,000	0	0.0%	N/A	N/A	N/A	N/A	N/A	N/A
\$25,000-\$49,999	1	2.2%	48,600	48,600	466	466	100.0%	100.0%
\$50,000-\$99,999	1	2.2%	99,000	99,000	10	10	100.0%	100.0%
\$100,000-\$124,999	0	0.0%	N/A	N/A	N/A	N/A	N/A	N/A
\$125,000-\$149,999	1	2.2%	135,000	135,000	105	105	100.0%	100.0%
\$150,000-\$174,999	3	6.7%	156,633	155,000	29	15	100.0%	100.0%
\$175,000-\$199,999	2	4.4%	189,950	189,950	8	8	100.0%	100.0%
\$200,000-\$249,999	7	15.6%	239,900	239,900	23	20	100.0%	100.0%
\$250,000-\$299,999	12	26.7%	279,603	280,450	12	4	102.5%	100.0%
\$300,000-\$399,999	15	33.3%	348,377	349,900	70	9	99.6%	100.0%
\$400,000-\$499,999	3	6.7%	427,967	424,900	5	5	100.0%	100.0%
\$500,000-\$749,999	0	0.0%	N/A	N/A	N/A	N/A	N/A	N/A
\$750,000-\$999,999	0	0.0%	N/A	N/A	N/A	N/A	N/A	N/A
\$1,000,000 and up	0	0.0%	N/A	N/A	N/A	N/A	N/A	N/A



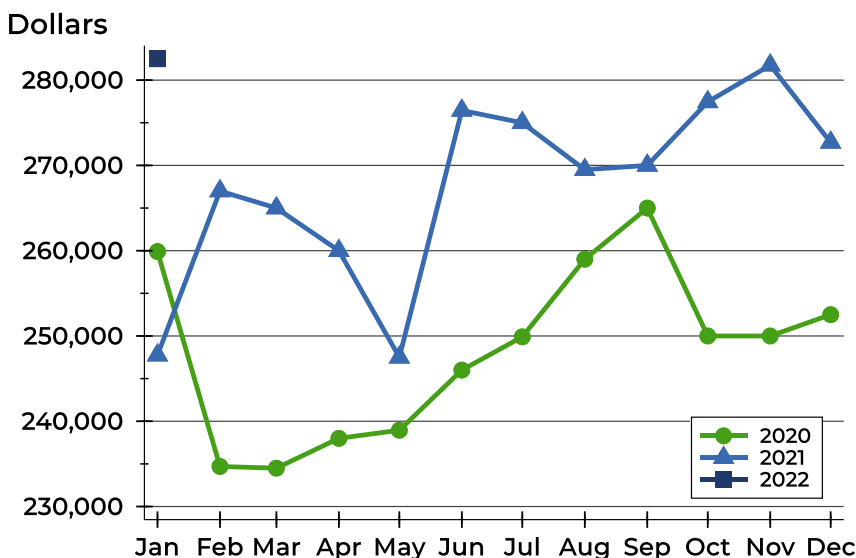
## Pottawatomie County Pending Contracts Analysis

### Average Price



Month	2020	2021	2022
<b>January</b>	274,908	253,565	<b>281,700</b>
<b>February</b>	251,427	281,241	
<b>March</b>	242,995	263,641	
<b>April</b>	253,607	267,766	
<b>May</b>	252,496	265,473	
<b>June</b>	249,649	277,862	
<b>July</b>	258,138	288,006	
<b>August</b>	250,781	284,350	
<b>September</b>	259,189	273,403	
<b>October</b>	268,773	268,839	
<b>November</b>	247,860	272,718	
<b>December</b>	249,923	271,423	

### Median Price

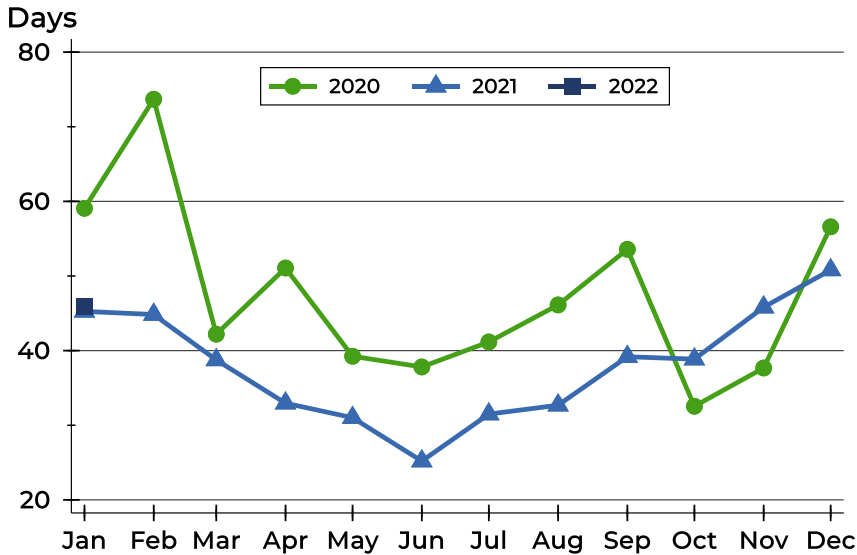


Month	2020	2021	2022
<b>January</b>	259,900	247,750	<b>282,500</b>
<b>February</b>	234,700	267,000	
<b>March</b>	234,500	265,000	
<b>April</b>	238,000	260,000	
<b>May</b>	238,950	247,500	
<b>June</b>	246,000	276,450	
<b>July</b>	249,900	275,000	
<b>August</b>	259,000	269,500	
<b>September</b>	265,000	270,000	
<b>October</b>	250,000	277,450	
<b>November</b>	250,000	281,750	
<b>December</b>	252,500	272,700	



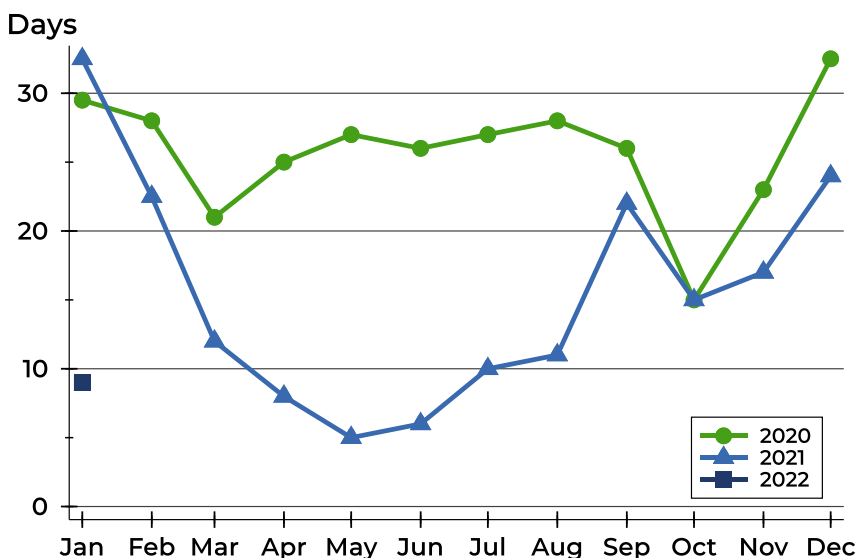
## Pottawatomie County Pending Contracts Analysis

### Average DOM



Month	2020	2021	2022
January	59	45	<b>46</b>
February	74	45	
March	42	39	
April	51	33	
May	39	31	
June	38	25	
July	41	31	
August	46	33	
September	54	39	
October	33	39	
November	38	46	
December	57	51	

### Median DOM



Month	2020	2021	2022
January	30	33	<b>9</b>
February	28	23	
March	21	12	
April	25	8	
May	27	5	
June	26	6	
July	27	10	
August	28	11	
September	26	22	
October	15	15	
November	23	17	
December	33	24	