



**December
2022**

Flint Hills MLS Statistics



**FLINT HILLS
ASSOCIATION
OF REALTORS®**

Pottawatomie County Housing Report



Market Overview

Pottawatomie County Home Sales Fell in December

Total home sales in Pottawatomie County fell last month to 19 units, compared to 30 units in December 2021. Total sales volume was \$6.1 million, down from a year earlier.

The median sale price in December was \$340,000, up from \$278,500 a year earlier. Homes that sold in December were typically on the market for 41 days and sold for 100.0% of their list prices.

Pottawatomie County Active Listings Up at End of December

The total number of active listings in Pottawatomie County at the end of December was 52 units, up from 27 at the same point in 2021. This represents a 1.9 months' supply of homes available for sale. The median list price of homes on the market at the end of December was \$334,500.

During December, a total of 16 contracts were written down from 19 in December 2021. At the end of the month, there were 30 contracts still pending.

Report Contents

- Summary Statistics – Page 2
- Closed Listing Analysis – Page 3
- Active Listings Analysis – Page 7
- Months' Supply Analysis – Page 11
- New Listings Analysis – Page 12
- Contracts Written Analysis – Page 15
- Pending Contracts Analysis – Page 19

Contact Information

Margaret Pendleton, Association Executive
 Flint Hills Association of REALTORS®
 205 S. Seth Child Road
 Manhattan, KS 66502
 785-776-1203
ae@flinthillsrealtors.net
www.flinthillsrealtors.net



**December
2022**

Flint Hills MLS Statistics



**FLINT HILLS
ASSOCIATION
OF REALTORS®**

Pottawatomie County Summary Statistics

December MLS Statistics Three-year History		Current Month			Year-to-Date		
		2022	2021	2020	2022	2021	2020
Home Sales		19	30	25	333	404	363
Change from prior year		-36.7%	20.0%	-7.4%	-17.6%	11.3%	10.0%
Active Listings		52	27	41	N/A	N/A	N/A
Change from prior year		92.6%	-34.1%	-39.7%			
Months' Supply		1.9	0.8	1.4	N/A	N/A	N/A
Change from prior year		137.5%	-42.9%	-44.0%			
New Listings		13	11	26	407	426	418
Change from prior year		18.2%	-57.7%	44.4%	-4.5%	1.9%	1.2%
Contracts Written		16	19	23	323	405	380
Change from prior year		-15.8%	-17.4%	64.3%	-20.2%	6.6%	15.9%
Pending Contracts		30	42	42	N/A	N/A	N/A
Change from prior year		-28.6%	0.0%	55.6%			
Sales Volume (1,000s)		6,136	7,960	6,354	103,731	110,355	92,115
Change from prior year		-22.9%	25.3%	-13.4%	-6.0%	19.8%	15.5%
Average	Sale Price	322,968	265,343	254,176	311,505	273,157	253,759
	Change from prior year	21.7%	4.4%	-6.5%	14.0%	7.6%	5.0%
	List Price of Actives	340,103	298,563	300,205	N/A	N/A	N/A
	Change from prior year	13.9%	-0.5%	20.9%			
	Days on Market	71	55	35	28	34	46
Change from prior year	29.1%	57.1%	-18.6%	-17.6%	-26.1%	-24.6%	
Percent of List	100.5%	98.7%	97.3%	100.1%	100.1%	99.0%	
Change from prior year	1.8%	1.4%	-1.5%	0.0%	1.1%	0.5%	
Percent of Original	97.9%	97.3%	96.1%	99.4%	99.2%	97.7%	
Change from prior year	0.6%	1.2%	-1.0%	0.2%	1.5%	0.8%	
Median	Sale Price	340,000	278,500	258,500	310,000	270,000	250,000
	Change from prior year	22.1%	7.7%	-0.6%	14.8%	8.0%	5.8%
	List Price of Actives	334,500	325,000	296,000	N/A	N/A	N/A
	Change from prior year	2.9%	9.8%	33.1%			
	Days on Market	41	24	28	8	10	22
Change from prior year	70.8%	-14.3%	-6.7%	-20.0%	-54.5%	-47.6%	
Percent of List	100.0%	99.6%	100.0%	100.0%	100.0%	99.9%	
Change from prior year	0.4%	-0.4%	0.0%	0.0%	0.1%	1.0%	
Percent of Original	99.3%	98.6%	100.0%	100.0%	100.0%	99.1%	
Change from prior year	0.7%	-1.4%	1.2%	0.0%	0.9%	1.2%	

Note: Year-to-date statistics cannot be calculated for Active Listings, Months' Supply and Pending Contracts.



Pottawatomie County Closed Listings Analysis

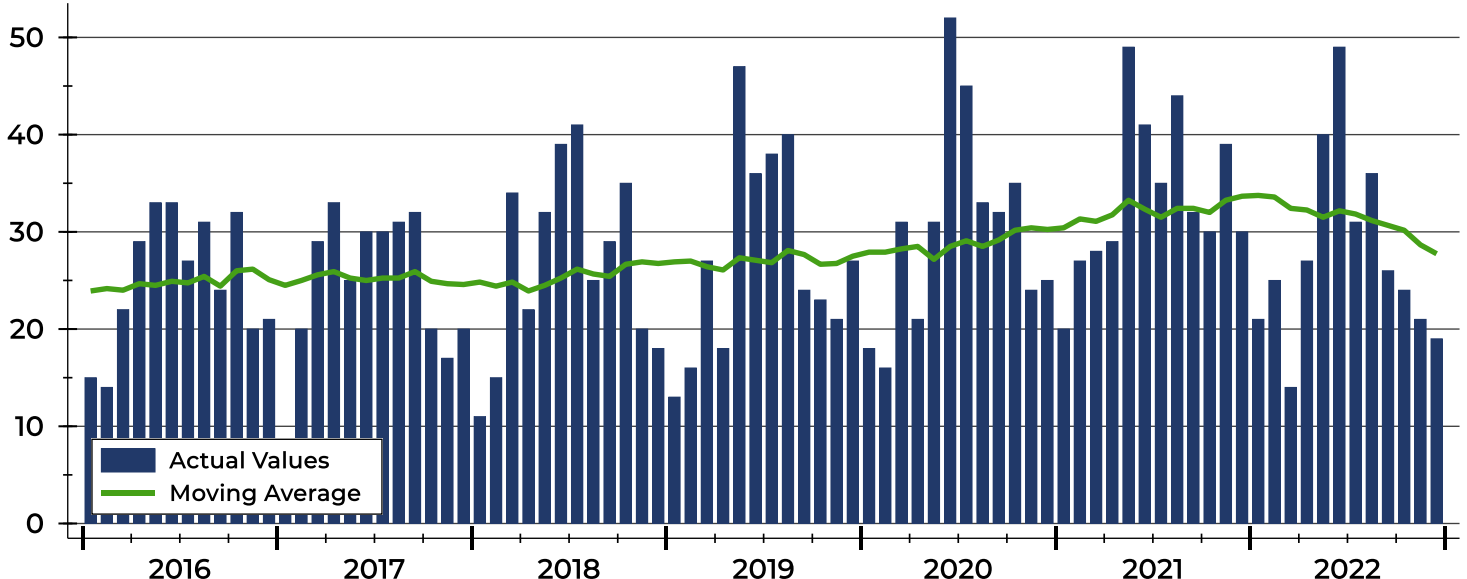
Summary Statistics for Closed Listings		December			Year-to-Date		
		2022	2021	Change	2022	2021	Change
Closed Listings		19	30	-36.7%	333	404	-17.6%
Volume (1,000s)		6,136	7,960	-22.9%	103,731	110,355	-6.0%
Months' Supply		1.9	0.8	137.5%	N/A	N/A	N/A
Average	Sale Price	322,968	265,343	21.7%	311,505	273,157	14.0%
	Days on Market	71	55	29.1%	28	34	-17.6%
	Percent of List	100.5%	98.7%	1.8%	100.1%	100.1%	0.0%
	Percent of Original	97.9%	97.3%	0.6%	99.4%	99.2%	0.2%
Median	Sale Price	340,000	278,500	22.1%	310,000	270,000	14.8%
	Days on Market	41	24	70.8%	8	10	-20.0%
	Percent of List	100.0%	99.6%	0.4%	100.0%	100.0%	0.0%
	Percent of Original	99.3%	98.6%	0.7%	100.0%	100.0%	0.0%

A total of 19 homes sold in Pottawatomie County in December, down from 30 units in December 2021. Total sales volume fell to \$6.1 million compared to \$8.0 million in the previous year.

The median sales price in December was \$340,000, up 22.1% compared to the prior year. Median days on market was 41 days, up from 13 days in November, and up from 24 in December 2021.

History of Closed Listings

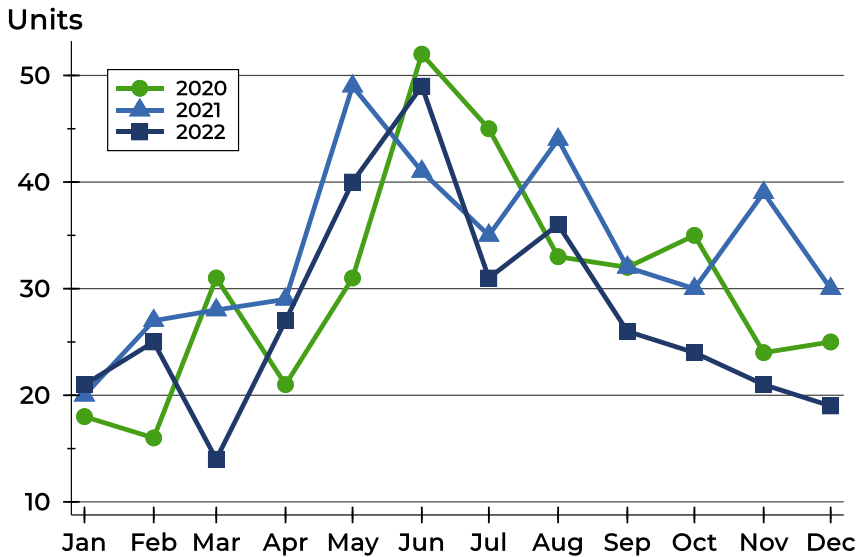
Units





Pottawatomie County Closed Listings Analysis

Closed Listings by Month



Month	2020	2021	2022
January	18	20	21
February	16	27	25
March	31	28	14
April	21	29	27
May	31	49	40
June	52	41	49
July	45	35	31
August	33	44	36
September	32	32	26
October	35	30	24
November	24	39	21
December	25	30	19

Closed Listings by Price Range

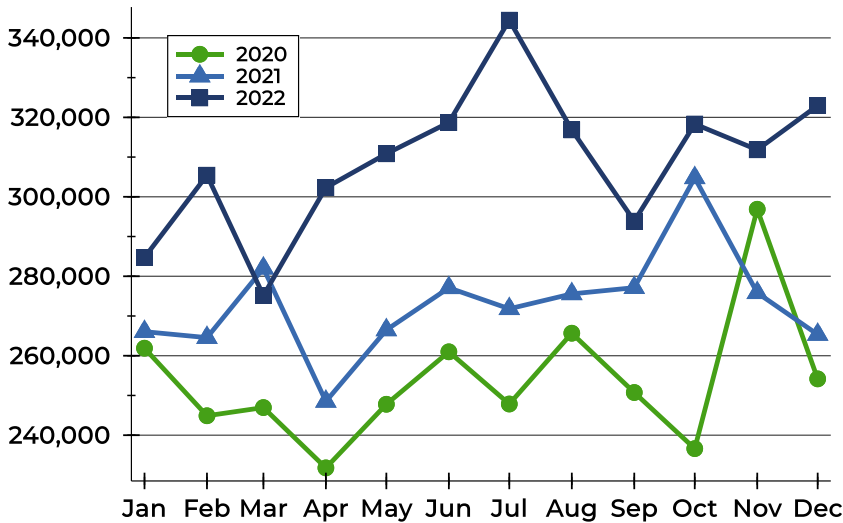
Price Range	Sales		Months' Supply	Sale Price		Days on Market		Price as % of List		Price as % of Orig.	
	Number	Percent		Average	Median	Avg.	Med.	Avg.	Med.	Avg.	Med.
Below \$25,000	0	0.0%	N/A	N/A	N/A	N/A	N/A	N/A	N/A	N/A	N/A
\$25,000-\$49,999	0	0.0%	N/A	N/A	N/A	N/A	N/A	N/A	N/A	N/A	N/A
\$50,000-\$99,999	0	0.0%	N/A	N/A	N/A	N/A	N/A	N/A	N/A	N/A	N/A
\$100,000-\$124,999	0	0.0%	N/A	N/A	N/A	N/A	N/A	N/A	N/A	N/A	N/A
\$125,000-\$149,999	0	0.0%	N/A	N/A	N/A	N/A	N/A	N/A	N/A	N/A	N/A
\$150,000-\$174,999	1	5.3%	2.2	174,000	174,000	18	18	97.2%	97.2%	97.2%	97.2%
\$175,000-\$199,999	2	10.5%	0.0	191,000	191,000	261	261	97.7%	97.7%	94.5%	94.5%
\$200,000-\$249,999	1	5.3%	1.4	246,500	246,500	41	41	98.6%	98.6%	94.8%	94.8%
\$250,000-\$299,999	4	21.1%	1.6	268,500	268,250	45	29	101.3%	100.0%	99.2%	99.0%
\$300,000-\$399,999	7	36.8%	1.6	361,557	355,000	58	16	101.9%	100.0%	100.6%	100.0%
\$400,000-\$499,999	4	21.1%	2.6	432,250	416,500	48	26	100.0%	99.8%	94.4%	99.8%
\$500,000-\$749,999	0	0.0%	N/A	N/A	N/A	N/A	N/A	N/A	N/A	N/A	N/A
\$750,000-\$999,999	0	0.0%	N/A	N/A	N/A	N/A	N/A	N/A	N/A	N/A	N/A
\$1,000,000 and up	0	0.0%	N/A	N/A	N/A	N/A	N/A	N/A	N/A	N/A	N/A



Pottawatomie County Closed Listings Analysis

Average Price

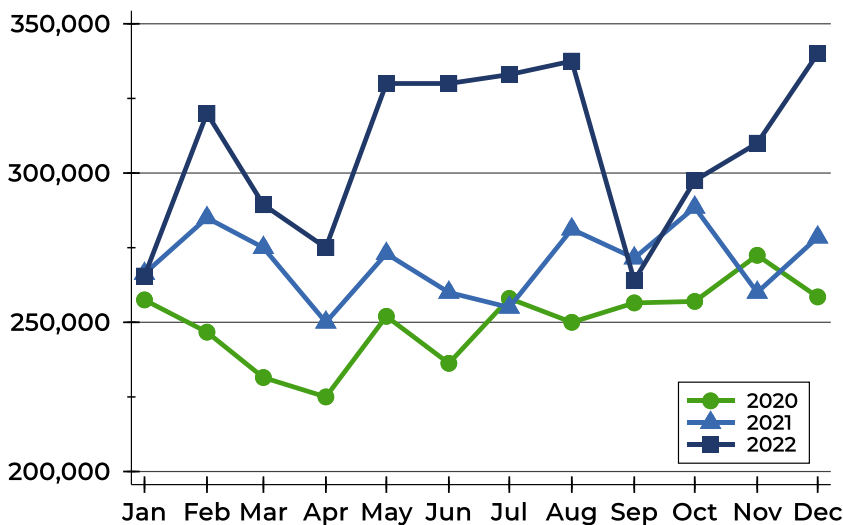
Dollars



Month	2020	2021	2022
January	261,903	266,064	284,752
February	244,894	264,562	305,443
March	246,959	282,018	275,167
April	231,776	248,504	302,308
May	247,790	266,490	310,831
June	260,992	277,099	318,706
July	247,853	271,821	344,468
August	265,671	275,567	316,847
September	250,749	277,140	293,881
October	236,625	304,775	318,325
November	296,878	275,848	311,843
December	254,176	265,343	322,968

Median Price

Dollars

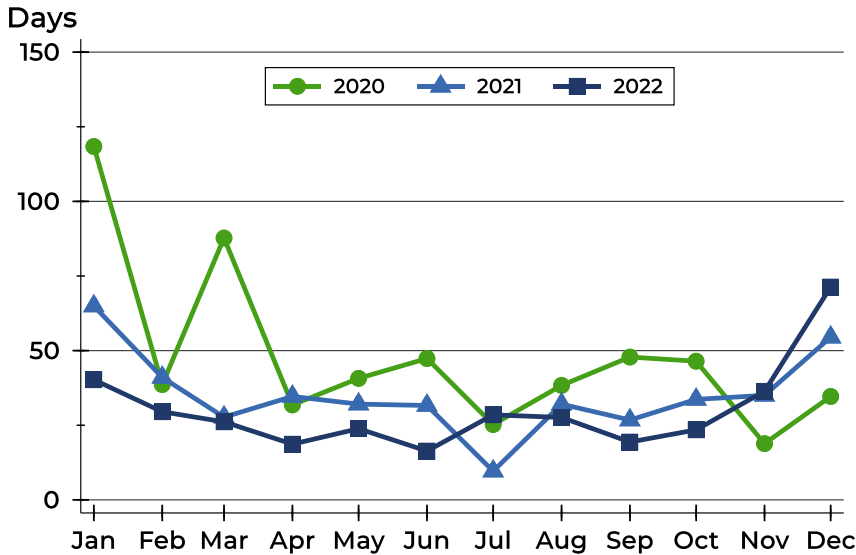


Month	2020	2021	2022
January	257,500	266,314	265,500
February	246,700	285,000	320,000
March	231,500	275,000	289,400
April	225,000	250,000	275,000
May	252,000	273,000	330,000
June	236,250	260,000	330,000
July	258,000	255,000	333,000
August	250,000	281,200	337,500
September	256,500	271,500	264,000
October	257,000	288,500	297,500
November	272,450	260,000	310,000
December	258,500	278,500	340,000



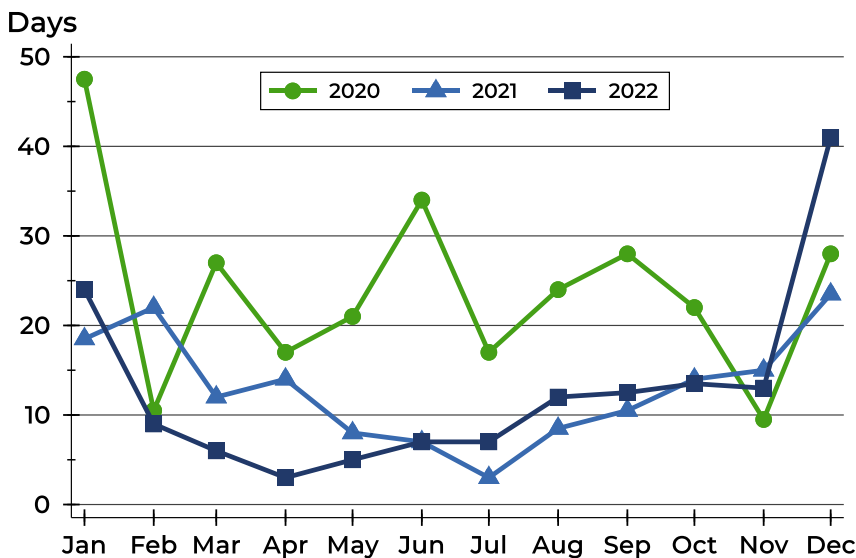
Pottawatomie County Closed Listings Analysis

Average DOM



Month	2020	2021	2022
January	118	65	40
February	39	41	30
March	88	28	26
April	32	35	19
May	41	32	24
June	47	32	16
July	25	10	28
August	38	32	28
September	48	27	19
October	46	34	23
November	19	35	36
December	35	55	71

Median DOM



Month	2020	2021	2022
January	48	19	24
February	11	22	9
March	27	12	6
April	17	14	3
May	21	8	5
June	34	7	7
July	17	3	7
August	24	9	12
September	28	11	13
October	22	14	14
November	10	15	13
December	28	24	41



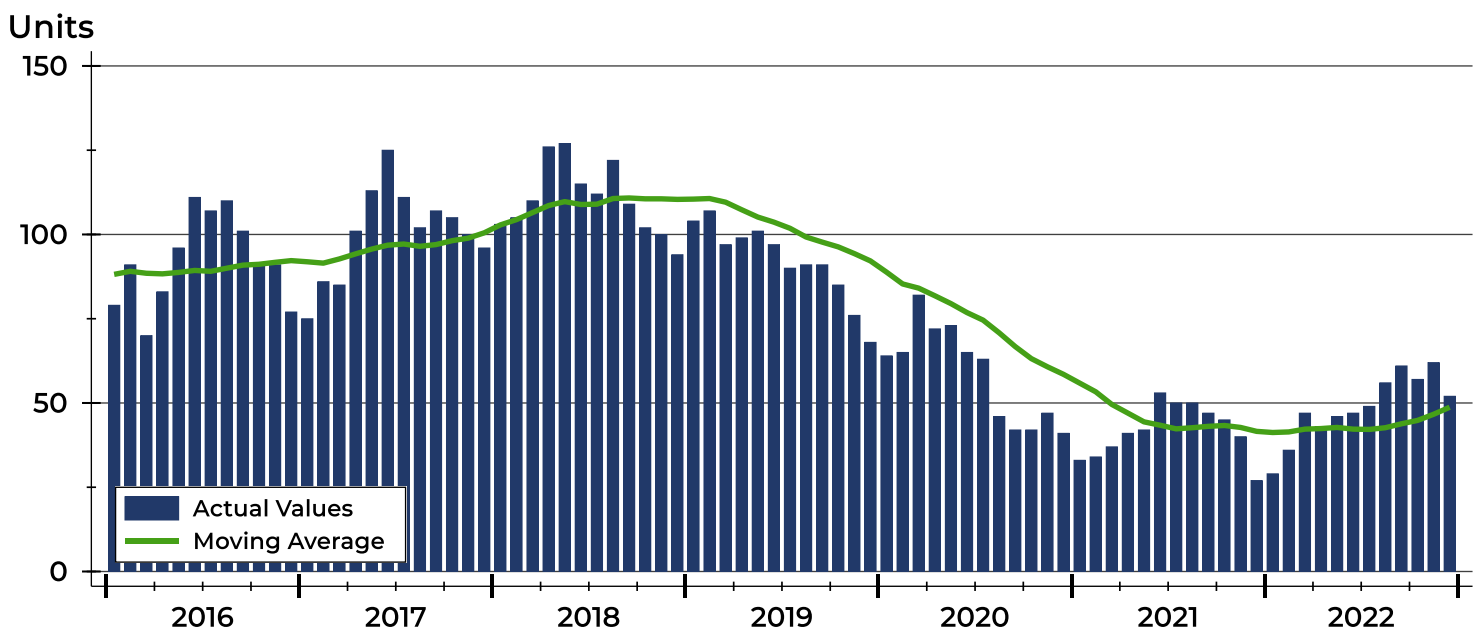
Pottawatomie County Active Listings Analysis

Summary Statistics for Active Listings		2022	2021	Change
Active Listings		52	27	92.6%
Volume (1,000s)		17,685	8,061	119.4%
Months' Supply		1.9	0.8	137.5%
Average	List Price	340,103	298,563	13.9%
	Days on Market	76	81	-6.2%
	Percent of Original	99.0%	99.4%	-0.4%
Median	List Price	334,500	325,000	2.9%
	Days on Market	59	67	-11.9%
	Percent of Original	100.0%	100.0%	0.0%

A total of 52 homes were available for sale in Pottawatomie County at the end of December. This represents a 1.9 months' supply of active listings.

The median list price of homes on the market at the end of December was \$334,500, up 2.9% from 2021. The typical time on market for active listings was 59 days, down from 67 days a year earlier.

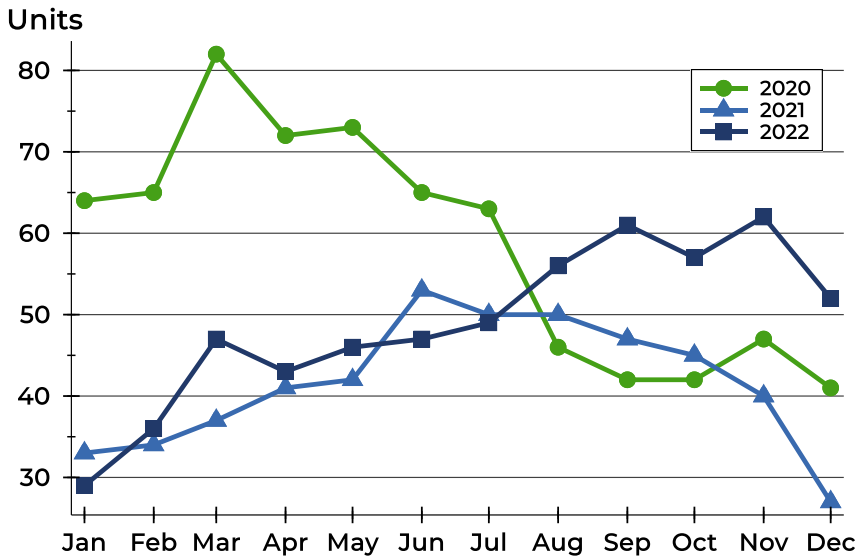
History of Active Listings





Pottawatomie County Active Listings Analysis

Active Listings by Month



Month	2020	2021	2022
January	64	33	29
February	65	34	36
March	82	37	47
April	72	41	43
May	73	42	46
June	65	53	47
July	63	50	49
August	46	50	56
September	42	47	61
October	42	45	57
November	47	40	62
December	41	27	52

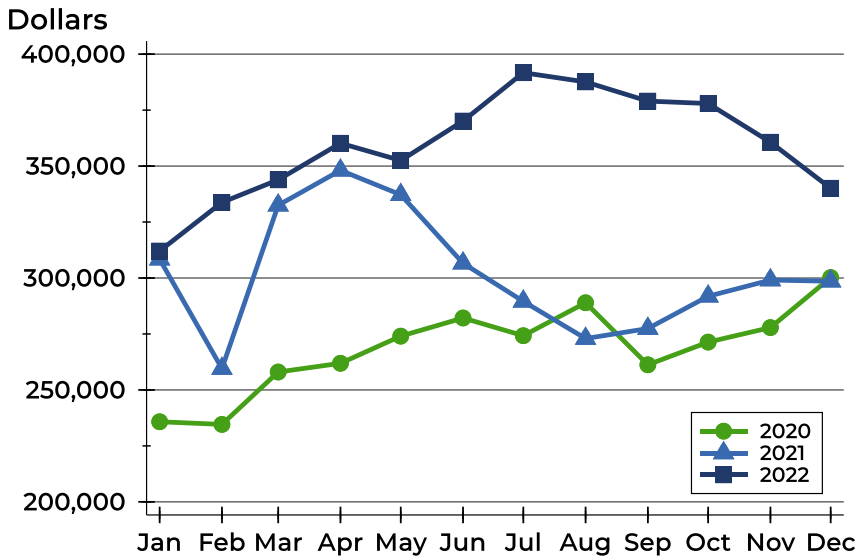
Active Listings by Price Range

Price Range	Active Listings		Months' Supply	List Price		Days on Market		Price as % of Orig.	
	Number	Percent		Average	Median	Avg.	Med.	Avg.	Med.
Below \$25,000	0	0.0%	N/A	N/A	N/A	N/A	N/A	N/A	N/A
\$25,000-\$49,999	0	0.0%	N/A	N/A	N/A	N/A	N/A	N/A	N/A
\$50,000-\$99,999	2	3.8%	N/A	94,950	94,950	63	63	100.0%	100.0%
\$100,000-\$124,999	0	0.0%	N/A	N/A	N/A	N/A	N/A	N/A	N/A
\$125,000-\$149,999	3	5.8%	N/A	136,667	140,000	35	19	97.8%	100.0%
\$150,000-\$174,999	2	3.8%	2.2	168,900	168,900	83	83	100.0%	100.0%
\$175,000-\$199,999	0	0.0%	0.0	N/A	N/A	N/A	N/A	N/A	N/A
\$200,000-\$249,999	4	7.7%	1.4	234,100	234,450	56	52	98.0%	99.0%
\$250,000-\$299,999	9	17.3%	1.6	280,967	289,900	45	45	99.6%	100.0%
\$300,000-\$399,999	17	32.7%	1.6	351,320	345,000	91	87	98.9%	100.0%
\$400,000-\$499,999	10	19.2%	2.6	434,710	434,450	91	58	99.5%	100.0%
\$500,000-\$749,999	5	9.6%	N/A	592,600	550,000	99	108	98.0%	100.0%
\$750,000-\$999,999	0	0.0%	N/A	N/A	N/A	N/A	N/A	N/A	N/A
\$1,000,000 and up	0	0.0%	N/A	N/A	N/A	N/A	N/A	N/A	N/A



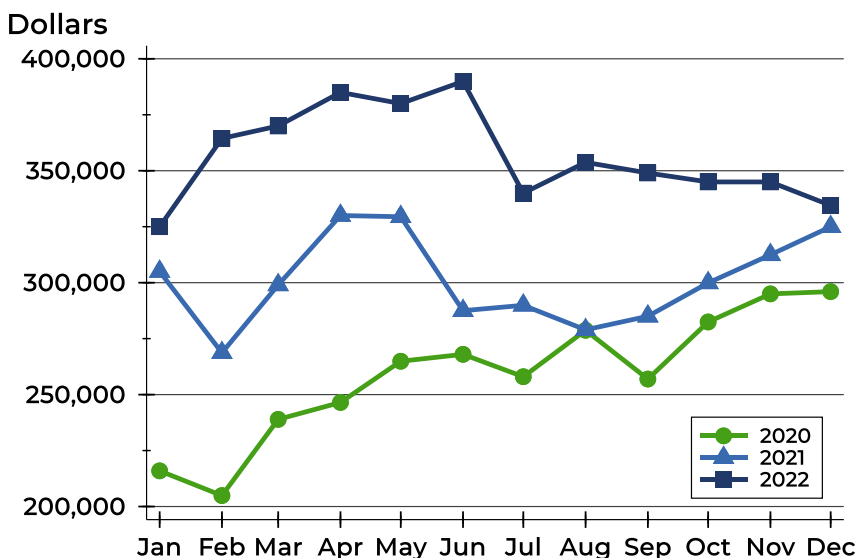
Pottawatomie County Active Listings Analysis

Average Price



Month	2020	2021	2022
January	235,787	308,385	312,066
February	234,610	259,565	333,767
March	258,014	332,489	343,857
April	261,901	348,095	360,213
May	274,036	337,200	352,492
June	282,150	306,614	370,121
July	274,238	289,574	391,716
August	288,946	272,958	387,600
September	261,224	277,430	379,030
October	271,369	291,840	377,949
November	277,857	299,078	360,668
December	300,205	298,563	340,103

Median Price

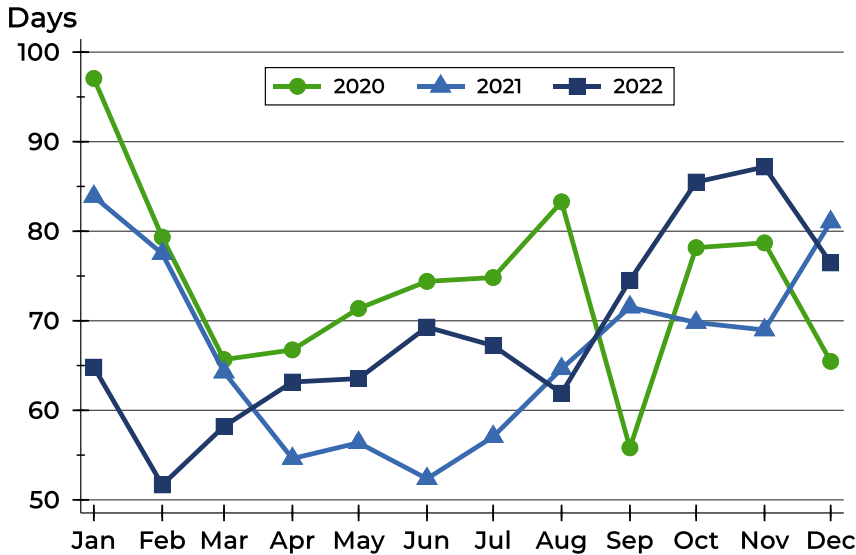


Month	2020	2021	2022
January	215,950	305,000	325,000
February	204,900	268,700	364,450
March	238,950	299,000	370,000
April	246,500	330,000	385,000
May	264,900	329,450	380,000
June	268,000	287,500	389,900
July	258,000	289,900	340,000
August	278,725	278,950	353,750
September	256,950	285,000	349,000
October	282,450	299,900	345,000
November	295,000	312,450	345,000
December	296,000	325,000	334,500



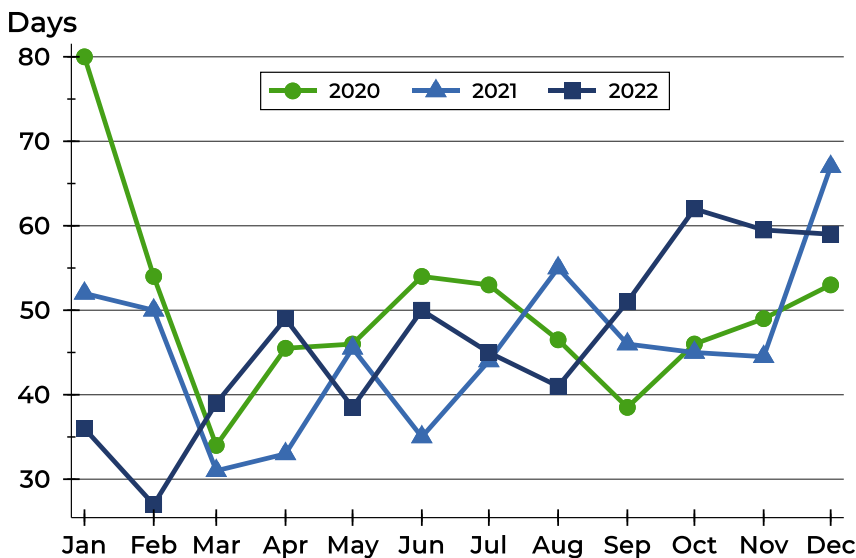
Pottawatomie County Active Listings Analysis

Average DOM



Month	2020	2021	2022
January	97	84	65
February	79	78	52
March	66	64	58
April	67	55	63
May	71	56	64
June	74	52	69
July	75	57	67
August	83	65	62
September	56	72	75
October	78	70	85
November	79	69	87
December	65	81	76

Median DOM

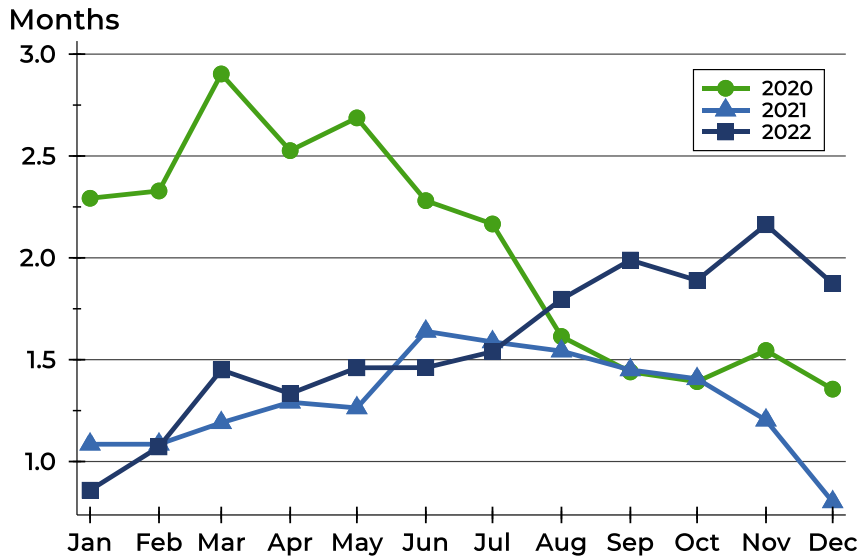


Month	2020	2021	2022
January	80	52	36
February	54	50	27
March	34	31	39
April	46	33	49
May	46	46	39
June	54	35	50
July	53	44	45
August	47	55	41
September	39	46	51
October	46	45	62
November	49	45	60
December	53	67	59



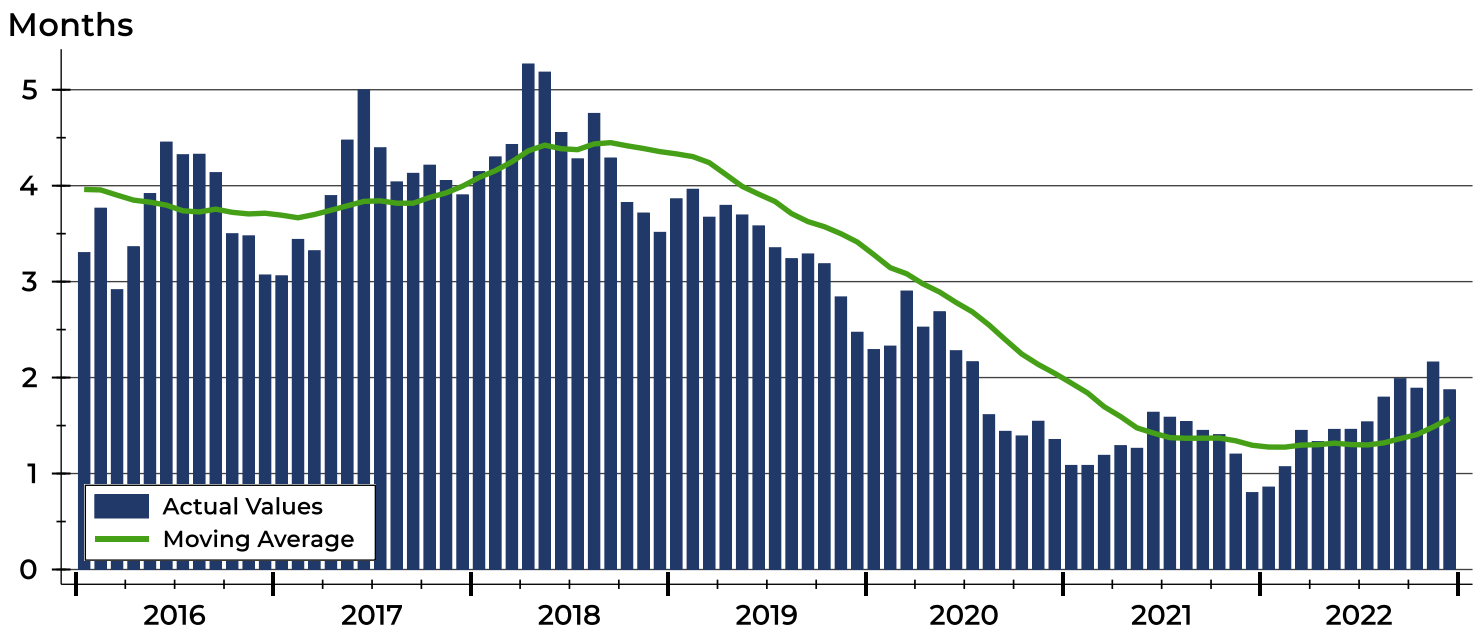
Pottawatomie County Months' Supply Analysis

Months' Supply by Month



Month	2020	2021	2022
January	2.3	1.1	0.9
February	2.3	1.1	1.1
March	2.9	1.2	1.4
April	2.5	1.3	1.3
May	2.7	1.3	1.5
June	2.3	1.6	1.5
July	2.2	1.6	1.5
August	1.6	1.5	1.8
September	1.4	1.4	2.0
October	1.4	1.4	1.9
November	1.5	1.2	2.2
December	1.4	0.8	1.9

History of Month's Supply





Pottawatomie County New Listings Analysis

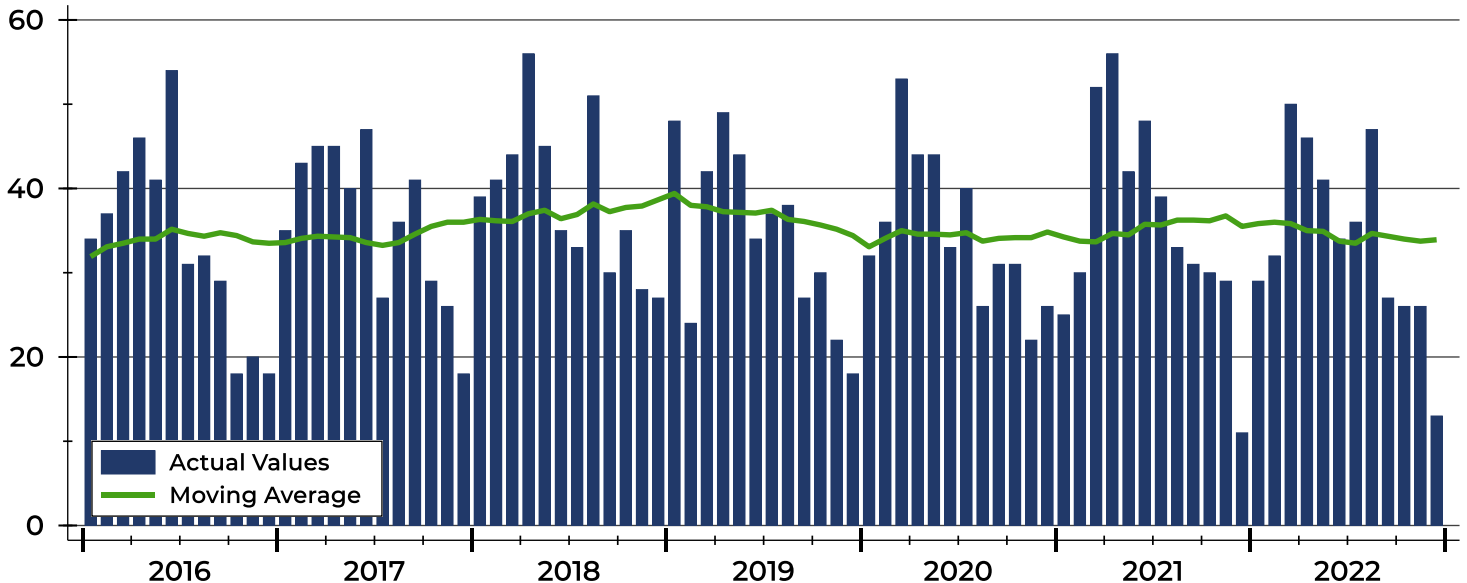
Summary Statistics for New Listings		2022	December 2021	Change
Current Month	New Listings	13	11	18.2%
	Volume (1,000s)	4,005	2,499	60.3%
	Average List Price	308,095	227,186	35.6%
	Median List Price	299,900	249,500	20.2%
Year-to-Date	New Listings	407	426	-4.5%
	Volume (1,000s)	136,909	119,956	14.1%
	Average List Price	336,385	281,587	19.5%
	Median List Price	329,900	275,000	20.0%

A total of 13 new listings were added in Pottawatomie County during December, up 18.2% from the same month in 2021. Year-to-date Pottawatomie County has seen 407 new listings.

The median list price of these homes was \$299,900 up from \$249,500 in 2021.

History of New Listings

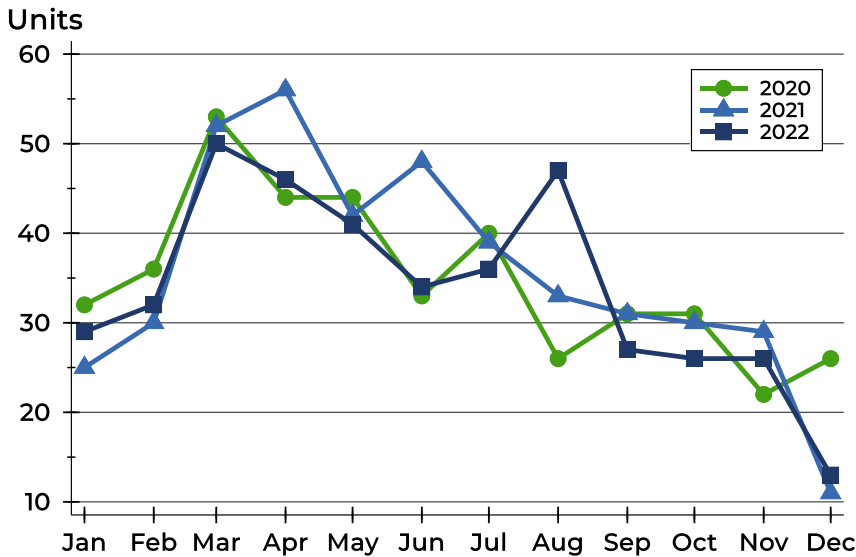
Units





Pottawatomie County New Listings Analysis

New Listings by Month



Month	2020	2021	2022
January	32	25	29
February	36	30	32
March	53	52	50
April	44	56	46
May	44	42	41
June	33	48	34
July	40	39	36
August	26	33	47
September	31	31	27
October	31	30	26
November	22	29	26
December	26	11	13

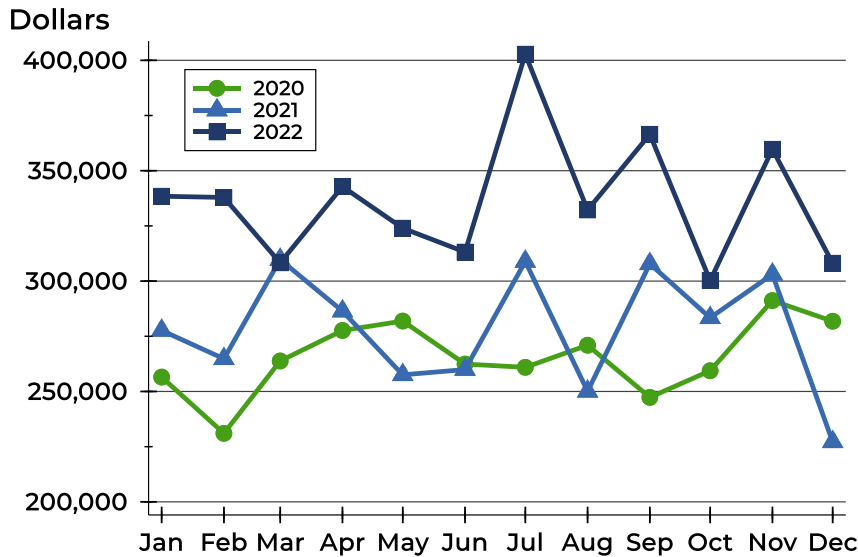
New Listings by Price Range

Price Range	New Listings		List Price		Days on Market		Price as % of Orig.	
	Number	Percent	Average	Median	Avg.	Med.	Avg.	Med.
Below \$25,000	0	0.0%	N/A	N/A	N/A	N/A	N/A	N/A
\$25,000-\$49,999	0	0.0%	N/A	N/A	N/A	N/A	N/A	N/A
\$50,000-\$99,999	0	0.0%	N/A	N/A	N/A	N/A	N/A	N/A
\$100,000-\$124,999	0	0.0%	N/A	N/A	N/A	N/A	N/A	N/A
\$125,000-\$149,999	2	15.4%	142,375	142,375	14	14	100.0%	100.0%
\$150,000-\$174,999	1	7.7%	169,950	169,950	2	2	100.0%	100.0%
\$175,000-\$199,999	0	0.0%	N/A	N/A	N/A	N/A	N/A	N/A
\$200,000-\$249,999	0	0.0%	N/A	N/A	N/A	N/A	N/A	N/A
\$250,000-\$299,999	4	30.8%	290,200	290,500	23	22	99.6%	100.0%
\$300,000-\$399,999	3	23.1%	361,613	379,900	10	11	100.0%	100.0%
\$400,000-\$499,999	3	23.1%	434,967	429,900	22	28	100.0%	100.0%
\$500,000-\$749,999	0	0.0%	N/A	N/A	N/A	N/A	N/A	N/A
\$750,000-\$999,999	0	0.0%	N/A	N/A	N/A	N/A	N/A	N/A
\$1,000,000 and up	0	0.0%	N/A	N/A	N/A	N/A	N/A	N/A



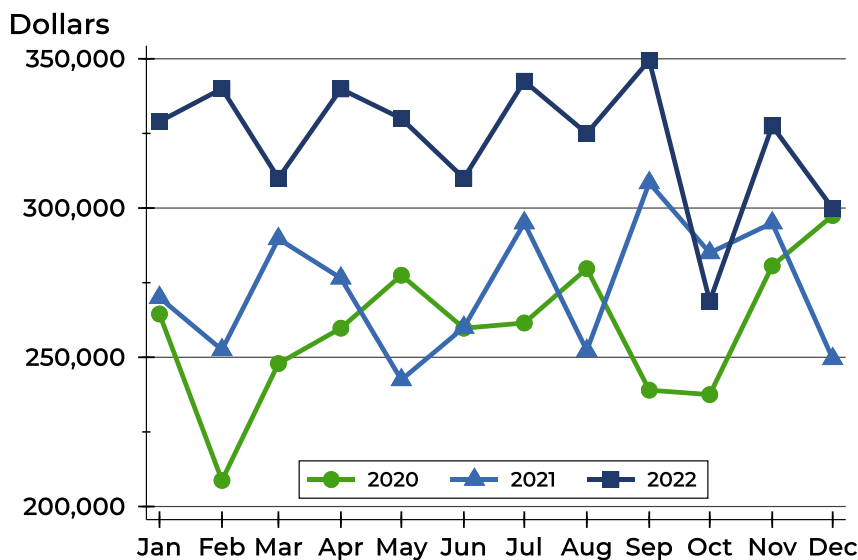
Pottawatomie County New Listings Analysis

Average Price



Month	2020	2021	2022
January	256,523	277,640	338,438
February	231,047	264,803	337,891
March	263,816	309,779	308,271
April	277,634	286,386	342,847
May	281,910	257,544	323,966
June	262,417	259,931	313,151
July	260,954	308,895	402,794
August	270,965	250,072	332,207
September	247,342	307,825	366,507
October	259,397	283,383	300,219
November	291,191	303,069	359,715
December	281,819	227,186	308,095

Median Price



Month	2020	2021	2022
January	264,500	270,000	329,000
February	208,750	252,500	340,000
March	247,900	289,700	310,000
April	259,750	276,500	339,900
May	277,500	242,450	330,000
June	259,750	260,000	310,000
July	261,500	295,000	342,500
August	279,700	252,250	325,000
September	239,000	308,450	349,500
October	237,500	285,000	268,750
November	280,635	295,000	327,500
December	297,500	249,500	299,900



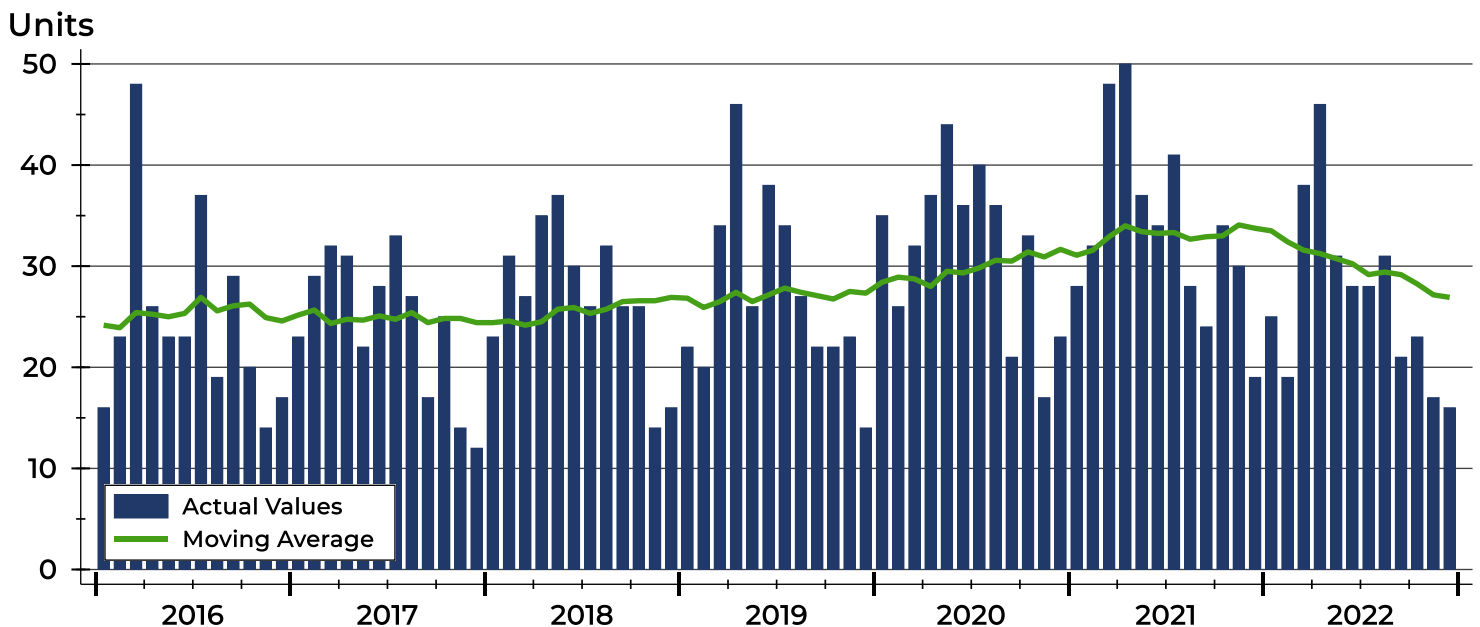
Pottawatomie County Contracts Written Analysis

Summary Statistics for Contracts Written		December			Year-to-Date		
		2022	2021	Change	2022	2021	Change
Contracts Written		16	19	-15.8%	323	405	-20.2%
Volume (1,000s)		5,237	5,093	2.8%	102,020	111,340	-8.4%
Average	Sale Price	327,319	268,045	22.1%	315,850	274,914	14.9%
	Days on Market	97	70	38.6%	30	32	-6.3%
	Percent of Original	95.9%	96.9%	-1.0%	99.3%	99.3%	0.0%
Median	Sale Price	317,500	249,500	27.3%	315,000	270,000	16.7%
	Days on Market	65	27	140.7%	9	10	-10.0%
	Percent of Original	96.8%	98.3%	-1.5%	100.0%	100.0%	0.0%

A total of 16 contracts for sale were written in Pottawatomie County during the month of December, down from 19 in 2021. The median list price of these homes was \$317,500, up from \$249,500 the prior year.

Half of the homes that went under contract in December were on the market less than 65 days, compared to 27 days in December 2021.

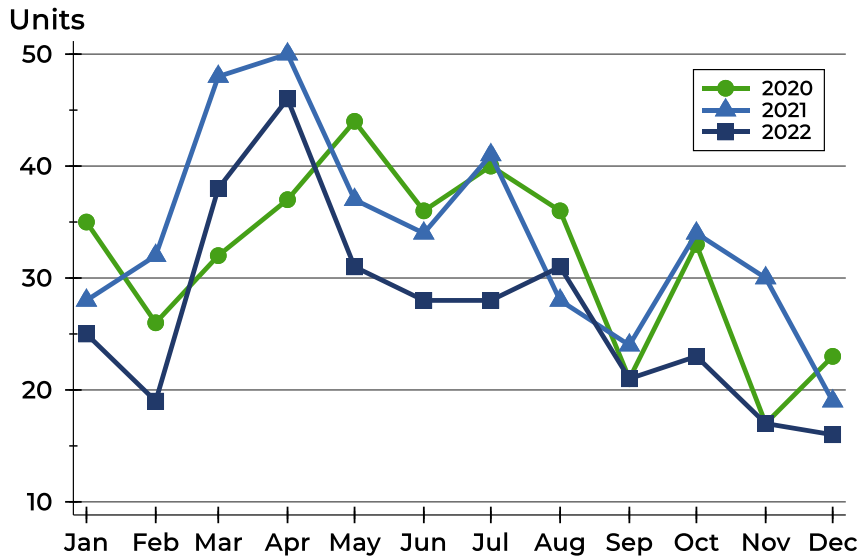
History of Contracts Written





Pottawatomie County Contracts Written Analysis

Contracts Written by Month



Month	2020	2021	2022
January	35	28	25
February	26	32	19
March	32	48	38
April	37	50	46
May	44	37	31
June	36	34	28
July	40	41	28
August	36	28	31
September	21	24	21
October	33	34	23
November	17	30	17
December	23	19	16

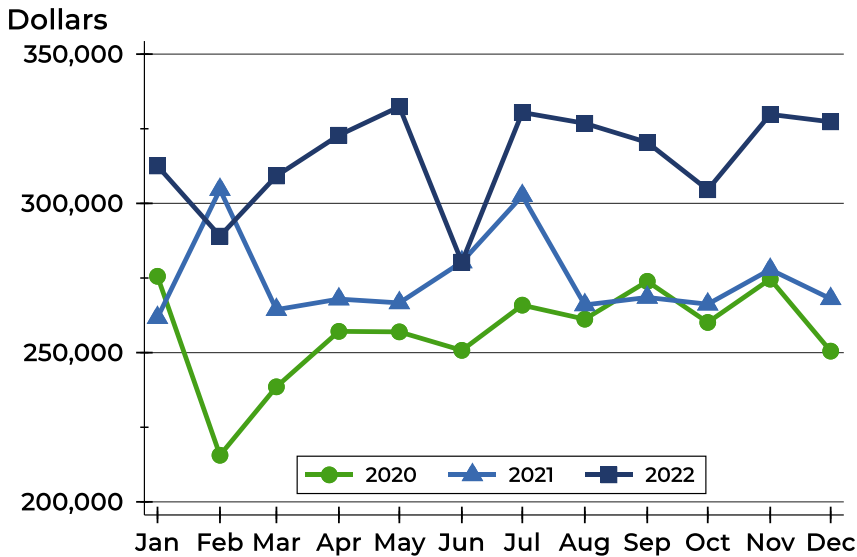
Contracts Written by Price Range

Price Range	Contracts Written		List Price		Days on Market		Price as % of Orig.	
	Number	Percent	Average	Median	Avg.	Med.	Avg.	Med.
Below \$25,000	0	0.0%	N/A	N/A	N/A	N/A	N/A	N/A
\$25,000-\$49,999	0	0.0%	N/A	N/A	N/A	N/A	N/A	N/A
\$50,000-\$99,999	0	0.0%	N/A	N/A	N/A	N/A	N/A	N/A
\$100,000-\$124,999	0	0.0%	N/A	N/A	N/A	N/A	N/A	N/A
\$125,000-\$149,999	1	6.3%	139,750	139,750	2	2	100.0%	100.0%
\$150,000-\$174,999	1	6.3%	169,950	169,950	2	2	100.0%	100.0%
\$175,000-\$199,999	0	0.0%	N/A	N/A	N/A	N/A	N/A	N/A
\$200,000-\$249,999	3	18.8%	216,300	214,500	194	72	94.8%	95.5%
\$250,000-\$299,999	2	12.5%	284,900	284,900	88	88	96.5%	96.5%
\$300,000-\$399,999	5	31.3%	340,700	334,500	118	127	93.5%	97.8%
\$400,000-\$499,999	2	12.5%	437,700	437,700	93	93	95.1%	95.1%
\$500,000-\$749,999	2	12.5%	564,900	564,900	8	8	100.0%	100.0%
\$750,000-\$999,999	0	0.0%	N/A	N/A	N/A	N/A	N/A	N/A
\$1,000,000 and up	0	0.0%	N/A	N/A	N/A	N/A	N/A	N/A



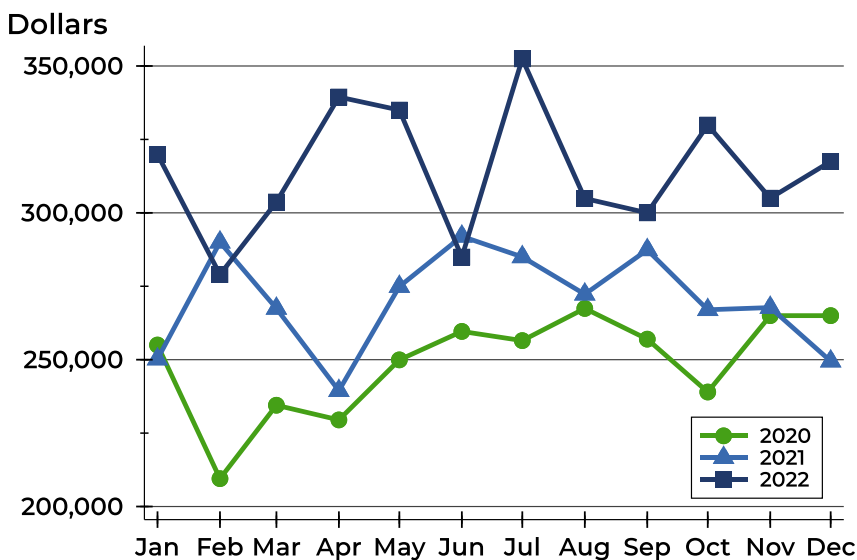
Pottawatomie County Contracts Written Analysis

Average Price



Month	2020	2021	2022
January	275,577	261,718	312,546
February	215,623	304,628	289,037
March	238,542	264,400	309,196
April	257,123	267,945	322,826
May	256,959	266,667	332,385
June	250,765	280,366	280,298
July	265,908	302,572	330,457
August	261,211	265,977	326,824
September	273,890	268,499	320,429
October	260,115	266,221	304,570
November	274,623	277,837	329,815
December	250,496	268,045	327,319

Median Price

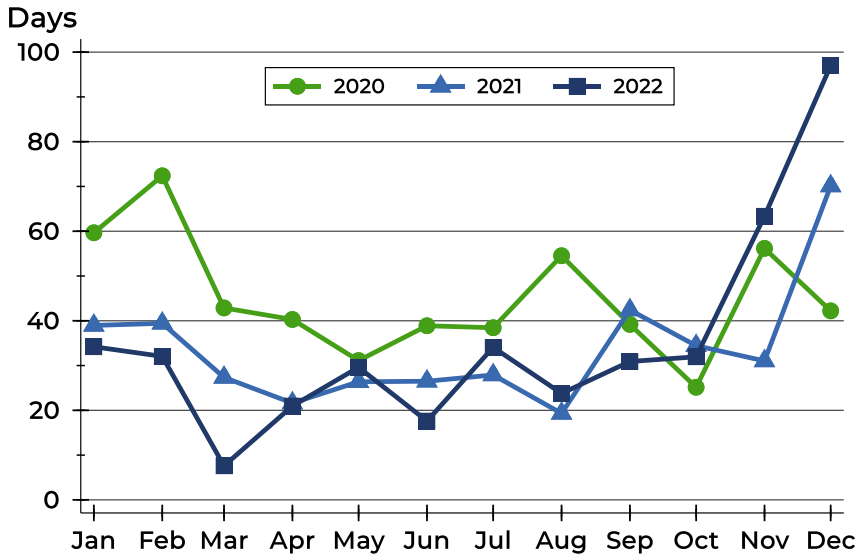


Month	2020	2021	2022
January	255,000	250,200	319,900
February	209,500	290,000	279,000
March	234,500	267,450	303,700
April	229,500	239,450	339,450
May	249,945	274,900	335,000
June	259,625	292,000	284,950
July	256,500	285,000	352,450
August	267,450	272,280	304,900
September	257,000	287,400	300,000
October	239,000	267,000	329,900
November	265,000	267,750	305,000
December	265,000	249,500	317,500



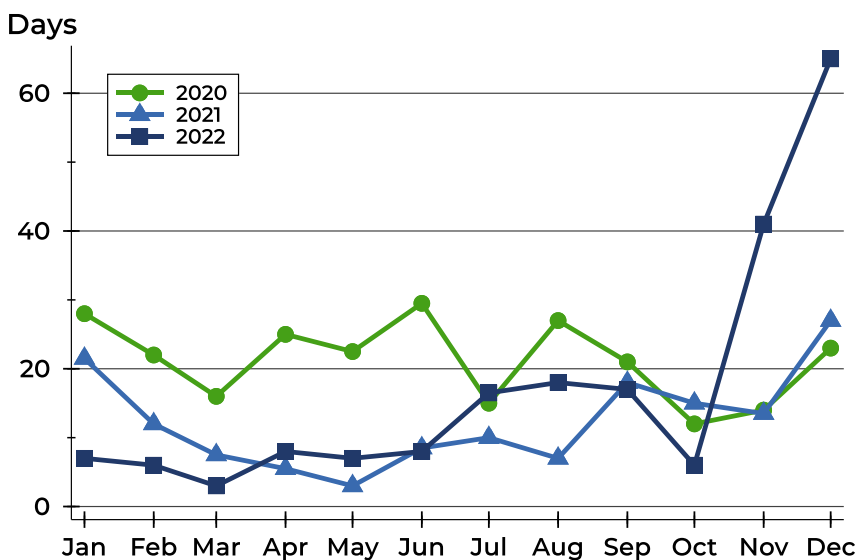
Pottawatomie County Contracts Written Analysis

Average DOM



Month	2020	2021	2022
January	60	39	34
February	72	39	32
March	43	27	8
April	40	22	21
May	31	26	30
June	39	27	18
July	38	28	34
August	55	19	24
September	39	42	31
October	25	34	32
November	56	31	63
December	42	70	97

Median DOM



Month	2020	2021	2022
January	28	22	7
February	22	12	6
March	16	8	3
April	25	6	8
May	23	3	7
June	30	9	8
July	15	10	17
August	27	7	18
September	21	18	17
October	12	15	6
November	14	14	41
December	23	27	65



Pottawatomie County Pending Contracts Analysis

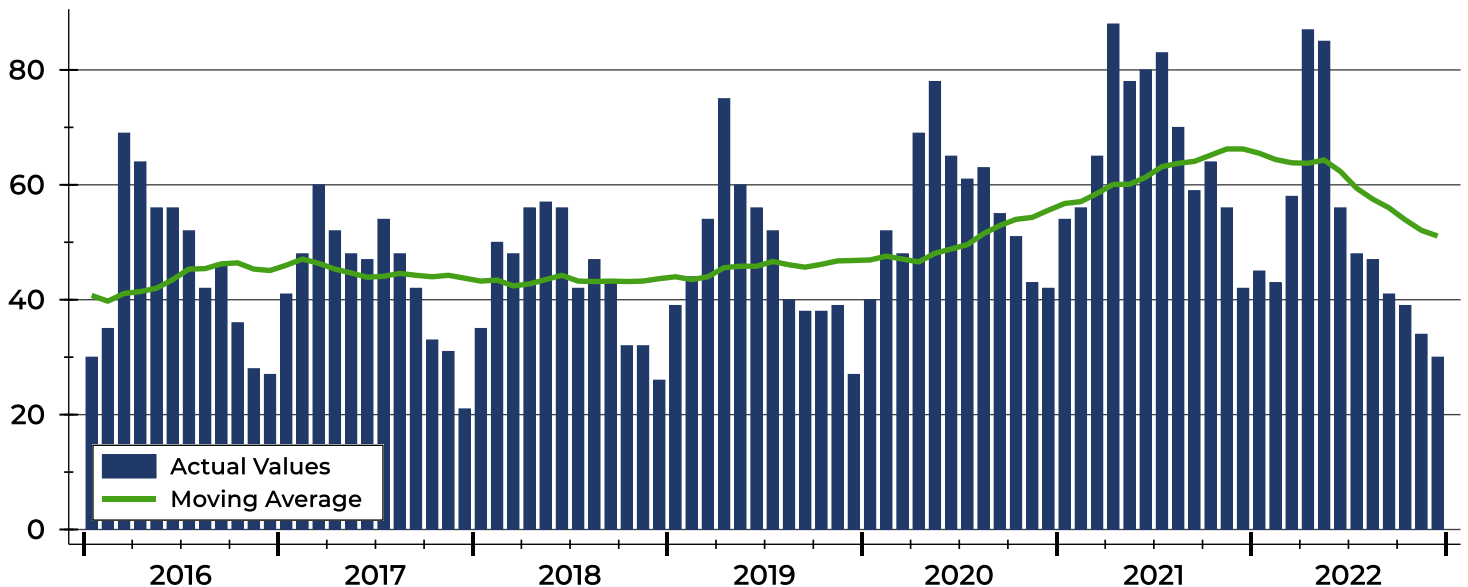
Summary Statistics for Pending Contracts		End of December		
		2022	2021	Change
Pending Contracts		30	42	-28.6%
Volume (1,000s)		9,793	11,400	-14.1%
Average	List Price	326,423	271,423	20.3%
	Days on Market	59	51	15.7%
	Percent of Original	98.1%	99.7%	-1.6%
Median	List Price	314,500	272,700	15.3%
	Days on Market	42	24	75.0%
	Percent of Original	100.0%	100.0%	0.0%

A total of 30 listings in Pottawatomie County had contracts pending at the end of December, down from 42 contracts pending at the end of December 2021.

Pending contracts reflect listings with a contract in place at the end of the month. In contrast, contracts written measures the number of listings put under contract during the month.

History of Pending Contracts

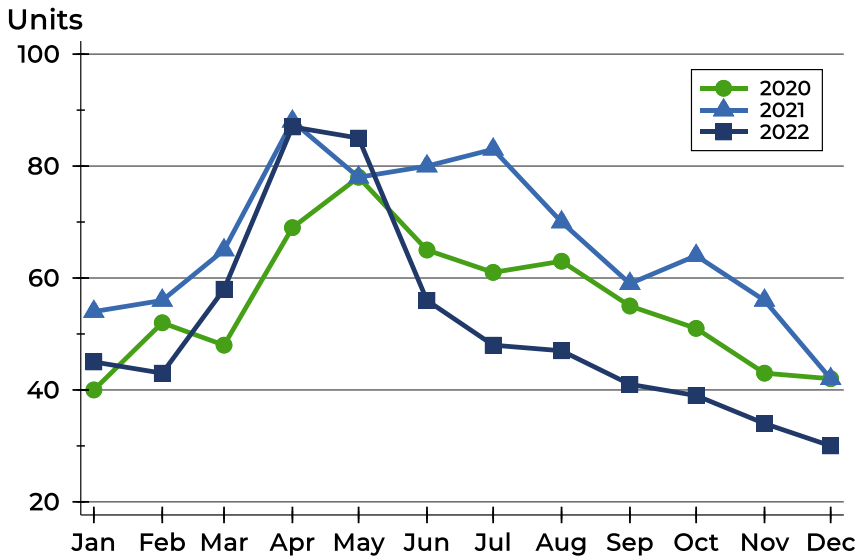
Units





Pottawatomie County Pending Contracts Analysis

Pending Contracts by Month



Month	2020	2021	2022
January	40	54	45
February	52	56	43
March	48	65	58
April	69	88	87
May	78	78	85
June	65	80	56
July	61	83	48
August	63	70	47
September	55	59	41
October	51	64	39
November	43	56	34
December	42	42	30

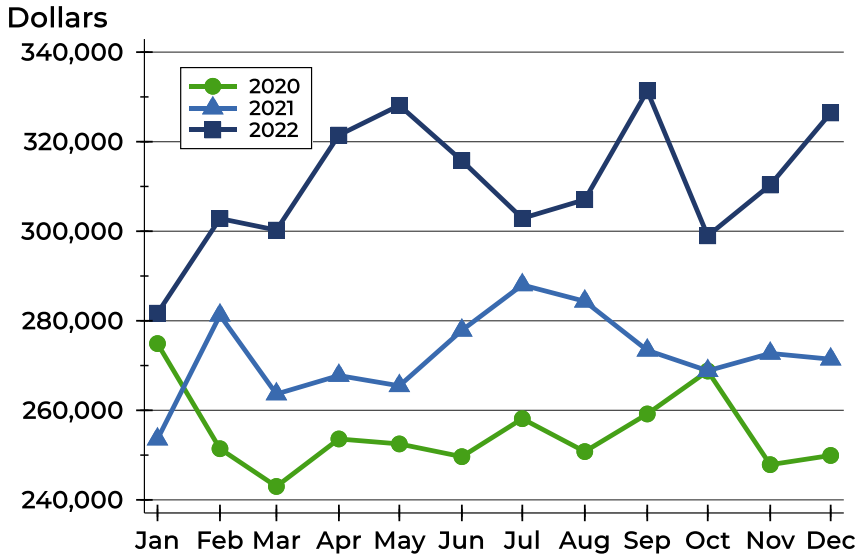
Pending Contracts by Price Range

Price Range	Pending Contracts		List Price		Days on Market		Price as % of Orig.	
	Number	Percent	Average	Median	Avg.	Med.	Avg.	Med.
Below \$25,000	0	0.0%	N/A	N/A	N/A	N/A	N/A	N/A
\$25,000-\$49,999	0	0.0%	N/A	N/A	N/A	N/A	N/A	N/A
\$50,000-\$99,999	0	0.0%	N/A	N/A	N/A	N/A	N/A	N/A
\$100,000-\$124,999	0	0.0%	N/A	N/A	N/A	N/A	N/A	N/A
\$125,000-\$149,999	1	3.3%	139,750	139,750	2	2	100.0%	100.0%
\$150,000-\$174,999	2	6.7%	159,975	159,975	81	81	87.5%	87.5%
\$175,000-\$199,999	1	3.3%	192,500	192,500	98	98	96.2%	96.2%
\$200,000-\$249,999	6	20.0%	234,783	234,900	33	37	98.6%	100.0%
\$250,000-\$299,999	4	13.3%	279,950	279,950	57	27	105.8%	100.0%
\$300,000-\$399,999	8	26.7%	334,050	327,450	107	98	95.9%	99.3%
\$400,000-\$499,999	5	16.7%	422,960	415,500	41	16	98.1%	100.0%
\$500,000-\$749,999	3	10.0%	608,267	579,900	10	9	100.0%	100.0%
\$750,000-\$999,999	0	0.0%	N/A	N/A	N/A	N/A	N/A	N/A
\$1,000,000 and up	0	0.0%	N/A	N/A	N/A	N/A	N/A	N/A



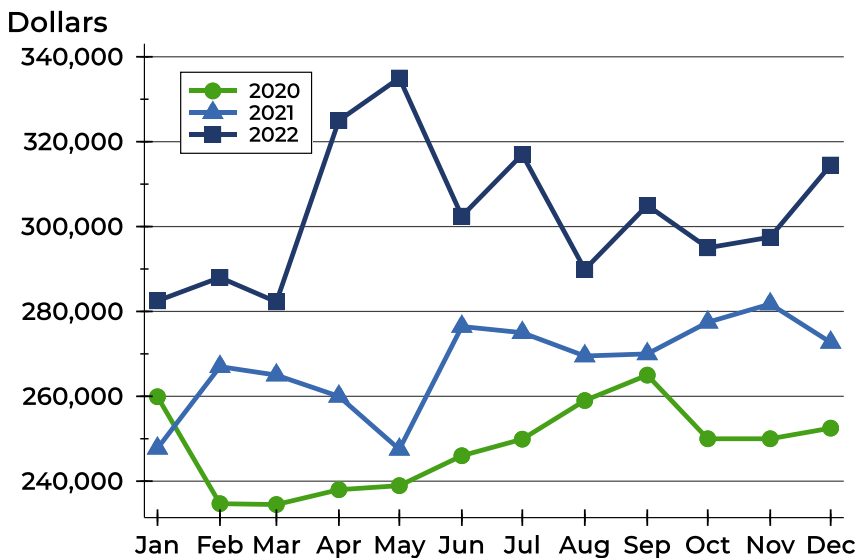
Pottawatomie County Pending Contracts Analysis

Average Price



Month	2020	2021	2022
January	274,908	253,565	281,700
February	251,427	281,241	302,832
March	242,995	263,641	300,248
April	253,607	267,766	321,471
May	252,496	265,473	328,125
June	249,649	277,862	315,771
July	258,138	288,006	302,886
August	250,781	284,350	307,048
September	259,189	273,403	331,346
October	268,773	268,839	298,977
November	247,860	272,718	310,334
December	249,923	271,423	326,423

Median Price

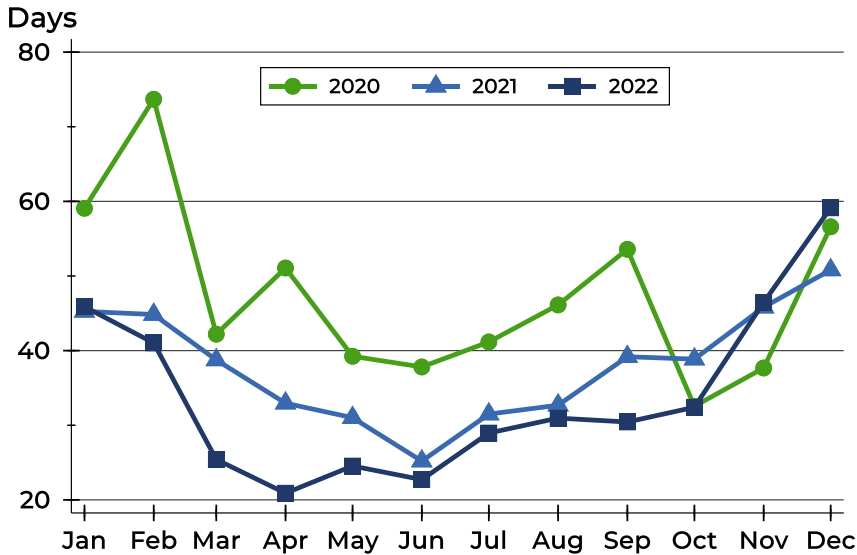


Month	2020	2021	2022
January	259,900	247,750	282,500
February	234,700	267,000	288,000
March	234,500	265,000	282,250
April	238,000	260,000	325,000
May	238,950	247,500	335,000
June	246,000	276,450	302,450
July	249,900	275,000	317,000
August	259,000	269,500	289,900
September	265,000	270,000	305,000
October	250,000	277,450	295,000
November	250,000	281,750	297,500
December	252,500	272,700	314,500



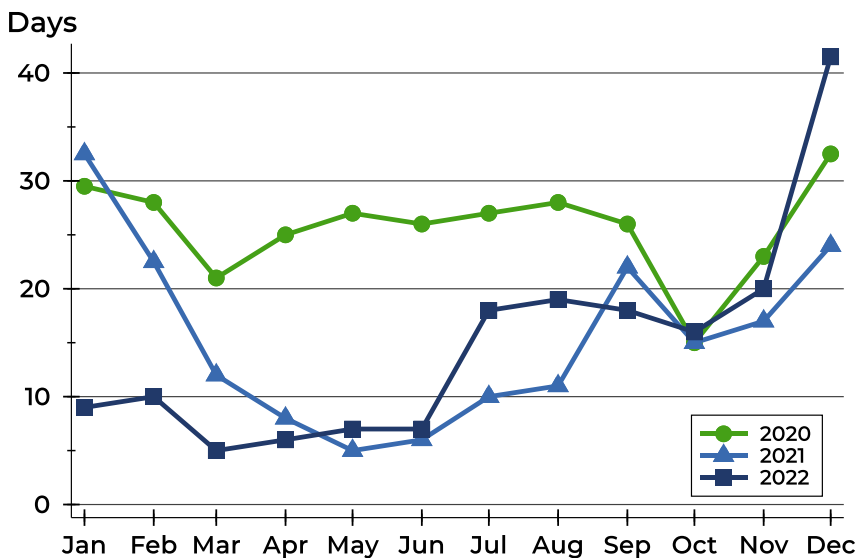
Pottawatomie County Pending Contracts Analysis

Average DOM



Month	2020	2021	2022
January	59	45	46
February	74	45	41
March	42	39	25
April	51	33	21
May	39	31	25
June	38	25	23
July	41	31	29
August	46	33	31
September	54	39	30
October	33	39	32
November	38	46	46
December	57	51	59

Median DOM



Month	2020	2021	2022
January	30	33	9
February	28	23	10
March	21	12	5
April	25	8	6
May	27	5	7
June	26	6	7
July	27	10	18
August	28	11	19
September	26	22	18
October	15	15	16
November	23	17	20
December	33	24	42