



**May
2022**

Flint Hills MLS Statistics



**FLINT HILLS
ASSOCIATION
OF REALTORS®**

Pottawatomie County Housing Report



Market Overview

Pottawatomie County Home Sales Fell in May

Total home sales in Pottawatomie County fell last month to 36 units, compared to 49 units in May 2021. Total sales volume was \$11.1 million, down from a year earlier.

The median sale price in May was \$321,000, up from \$273,000 a year earlier. Homes that sold in May were typically on the market for 5 days and sold for 100.0% of their list prices.

Pottawatomie County Active Listings Up at End of May

The total number of active listings in Pottawatomie County at the end of May was 46 units, up from 42 at the same point in 2021. This represents a 1.5 months' supply of homes available for sale. The median list price of homes on the market at the end of May was \$380,000.

During May, a total of 33 contracts were written down from 37 in May 2021. At the end of the month, there were 84 contracts still pending.

Report Contents

- Summary Statistics – Page 2
- Closed Listing Analysis – Page 3
- Active Listings Analysis – Page 7
- Months' Supply Analysis – Page 11
- New Listings Analysis – Page 12
- Contracts Written Analysis – Page 15
- Pending Contracts Analysis – Page 19

Contact Information

Margaret Pendleton, Association Executive
 Flint Hills Association of REALTORS®
 205 S. Seth Child Road
 Manhattan, KS 66502
 685-776-1211
ae@flinthillsrealtors.net
www.flinthillsrealtors.net



**May
2022**

Flint Hills MLS Statistics



**FLINT HILLS
ASSOCIATION
OF REALTORS®**

Pottawatomie County Summary Statistics

May MLS Statistics Three-year History		Current Month			Year-to-Date		
		2022	2021	2020	2022	2021	2020
Home Sales		36	49	31	123	153	117
Change from prior year		-26.5%	58.1%	-34.0%	-19.6%	30.8%	-3.3%
Active Listings		46	42	73	N/A	N/A	N/A
Change from prior year		9.5%	-42.5%	-27.7%			
Months' Supply		1.5	1.3	2.7	N/A	N/A	N/A
Change from prior year		15.4%	-51.9%	-27.0%			
New Listings		37	42	44	191	205	209
Change from prior year		-11.9%	-4.5%	0.0%	-6.8%	-1.9%	1.0%
Contracts Written		33	37	44	159	195	174
Change from prior year		-10.8%	-15.9%	69.2%	-18.5%	12.1%	17.6%
Pending Contracts		84	78	78	N/A	N/A	N/A
Change from prior year		7.7%	0.0%	30.0%			
Sales Volume (1,000s)		11,084	13,058	7,682	36,715	40,626	28,837
Change from prior year		-15.1%	70.0%	-33.0%	-9.6%	40.9%	-1.7%
Average	Sale Price	307,895	266,490	247,790	298,494	265,527	246,471
	Change from prior year	15.5%	7.5%	1.5%	12.4%	7.7%	1.7%
	List Price of Actives	352,492	337,200	274,036	N/A	N/A	N/A
	Change from prior year	4.5%	23.0%	1.3%			
	Days on Market	26	32	41	27	38	63
Change from prior year	-18.8%	-22.0%	-32.8%	-28.9%	-39.7%	-4.5%	
	Percent of List	100.9%	100.7%	99.1%	100.9%	99.3%	99.1%
Change from prior year	0.2%	1.6%	0.8%	1.6%	0.2%	0.9%	
	Percent of Original	100.6%	100.0%	98.8%	100.3%	98.4%	97.6%
Change from prior year	0.6%	1.2%	2.7%	1.9%	0.8%	1.2%	
Median	Sale Price	321,000	273,000	252,000	294,535	269,000	242,500
	Change from prior year	17.6%	8.3%	10.0%	9.5%	10.9%	5.4%
	List Price of Actives	380,000	329,450	264,900	N/A	N/A	N/A
	Change from prior year	15.3%	24.4%	4.3%			
	Days on Market	5	8	21	6	12	22
Change from prior year	-37.5%	-61.9%	-59.6%	-50.0%	-45.5%	-52.2%	
	Percent of List	100.0%	101.2%	99.4%	100.0%	100.0%	99.5%
Change from prior year	-1.2%	1.8%	0.5%	0.0%	0.5%	0.7%	
	Percent of Original	100.0%	101.7%	99.2%	100.0%	100.0%	98.9%
Change from prior year	-1.7%	2.5%	1.2%	0.0%	1.1%	0.8%	

Note: Year-to-date statistics cannot be calculated for Active Listings, Months' Supply and Pending Contracts.



**May
2022**

Flint Hills MLS Statistics



**FLINT HILLS
ASSOCIATION
OF REALTORS®**

Pottawatomie County Closed Listings Analysis

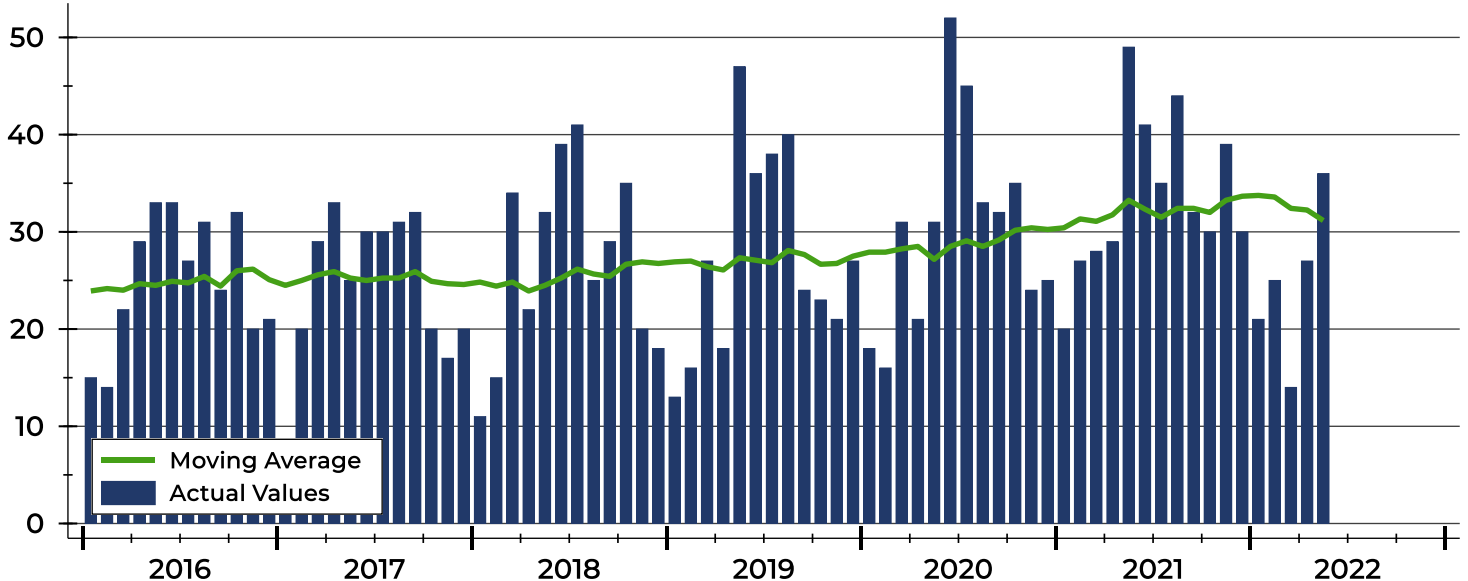
Summary Statistics for Closed Listings		2022	May 2021	Change	2022	Year-to-Date 2021	Change
Closed Listings		36	49	-26.5%	123	153	-19.6%
Volume (1,000s)		11,084	13,058	-15.1%	36,715	40,626	-9.6%
Months' Supply		1.5	1.3	15.4%	N/A	N/A	N/A
Average	Sale Price	307,895	266,490	15.5%	298,494	265,527	12.4%
	Days on Market	26	32	-18.8%	27	38	-28.9%
	Percent of List	100.9%	100.7%	0.2%	100.9%	99.3%	1.6%
	Percent of Original	100.6%	100.0%	0.6%	100.3%	98.4%	1.9%
Median	Sale Price	321,000	273,000	17.6%	294,535	269,000	9.5%
	Days on Market	5	8	-37.5%	6	12	-50.0%
	Percent of List	100.0%	101.2%	-1.2%	100.0%	100.0%	0.0%
	Percent of Original	100.0%	101.7%	-1.7%	100.0%	100.0%	0.0%

A total of 36 homes sold in Pottawatomie County in May, down from 49 units in May 2021. Total sales volume fell to \$11.1 million compared to \$13.1 million in the previous year.

The median sales price in May was \$321,000, up 17.6% compared to the prior year. Median days on market was 5 days, up from 3 days in April, but down from 8 in May 2021.

History of Closed Listings

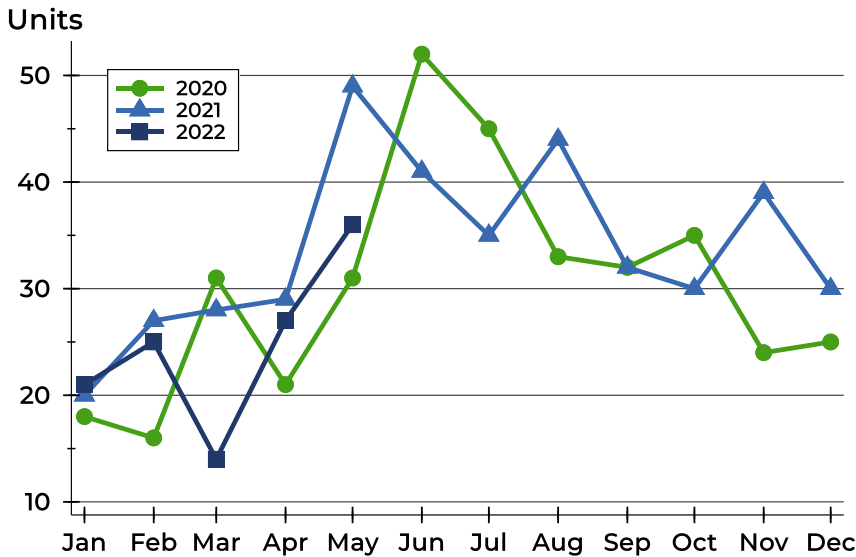
Units





Pottawatomie County Closed Listings Analysis

Closed Listings by Month



Month	2020	2021	2022
January	18	20	21
February	16	27	25
March	31	28	14
April	21	29	27
May	31	49	36
June	52	41	
July	45	35	
August	33	44	
September	32	32	
October	35	30	
November	24	39	
December	25	30	

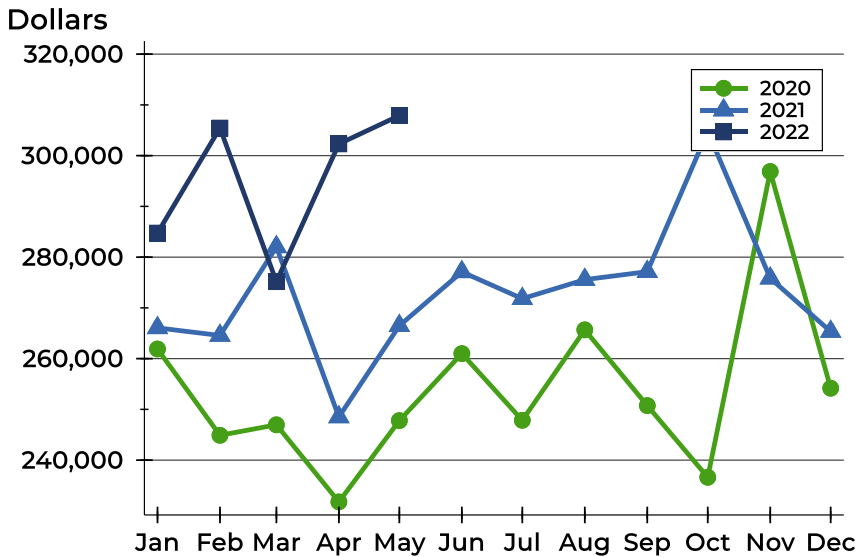
Closed Listings by Price Range

Price Range	Sales		Months' Supply	Sale Price		Days on Market		Price as % of List		Price as % of Orig.	
	Number	Percent		Average	Median	Avg.	Med.	Avg.	Med.	Avg.	Med.
Below \$25,000	0	0.0%	N/A	N/A	N/A	N/A	N/A	N/A	N/A	N/A	N/A
\$25,000-\$49,999	0	0.0%	N/A	N/A	N/A	N/A	N/A	N/A	N/A	N/A	N/A
\$50,000-\$99,999	1	2.8%	2.4	84,000	84,000	9	9	96.0%	96.0%	96.0%	96.0%
\$100,000-\$124,999	1	2.8%	1.3	120,000	120,000	11	11	100.0%	100.0%	100.0%	100.0%
\$125,000-\$149,999	0	0.0%	N/A	N/A	N/A	N/A	N/A	N/A	N/A	N/A	N/A
\$150,000-\$174,999	2	5.6%	1.3	158,750	158,750	3	3	105.0%	105.0%	105.0%	105.0%
\$175,000-\$199,999	2	5.6%	0.8	192,450	192,450	34	34	100.0%	100.0%	100.0%	100.0%
\$200,000-\$249,999	4	11.1%	0.4	225,000	224,750	69	23	103.7%	104.8%	103.7%	104.8%
\$250,000-\$299,999	5	13.9%	0.4	282,200	281,000	3	4	101.3%	101.9%	101.3%	101.9%
\$300,000-\$399,999	15	41.7%	1.6	347,363	345,000	18	6	100.1%	100.0%	99.3%	100.0%
\$400,000-\$499,999	5	13.9%	5.0	429,275	415,900	39	36	100.9%	101.2%	101.2%	101.2%
\$500,000-\$749,999	1	2.8%	3.4	510,000	510,000	70	70	98.1%	98.1%	98.1%	98.1%
\$750,000-\$999,999	0	0.0%	N/A	N/A	N/A	N/A	N/A	N/A	N/A	N/A	N/A
\$1,000,000 and up	0	0.0%	N/A	N/A	N/A	N/A	N/A	N/A	N/A	N/A	N/A



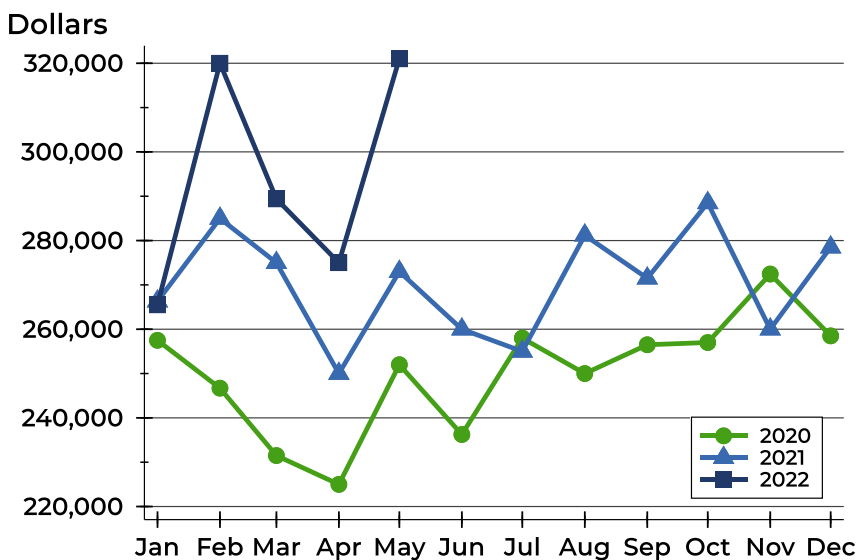
Pottawatomie County Closed Listings Analysis

Average Price



Month	2020	2021	2022
January	261,903	266,064	284,752
February	244,894	264,562	305,443
March	246,959	282,018	275,167
April	231,776	248,504	302,308
May	247,790	266,490	307,895
June	260,992	277,099	
July	247,853	271,821	
August	265,671	275,567	
September	250,749	277,140	
October	236,625	304,775	
November	296,878	275,848	
December	254,176	265,343	

Median Price

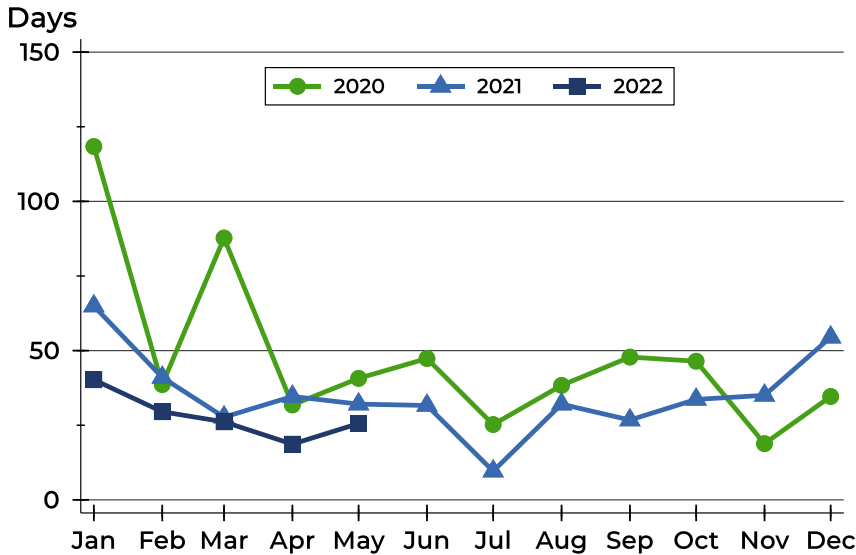


Month	2020	2021	2022
January	257,500	266,314	265,500
February	246,700	285,000	320,000
March	231,500	275,000	289,400
April	225,000	250,000	275,000
May	252,000	273,000	321,000
June	236,250	260,000	
July	258,000	255,000	
August	250,000	281,200	
September	256,500	271,500	
October	257,000	288,500	
November	272,450	260,000	
December	258,500	278,500	



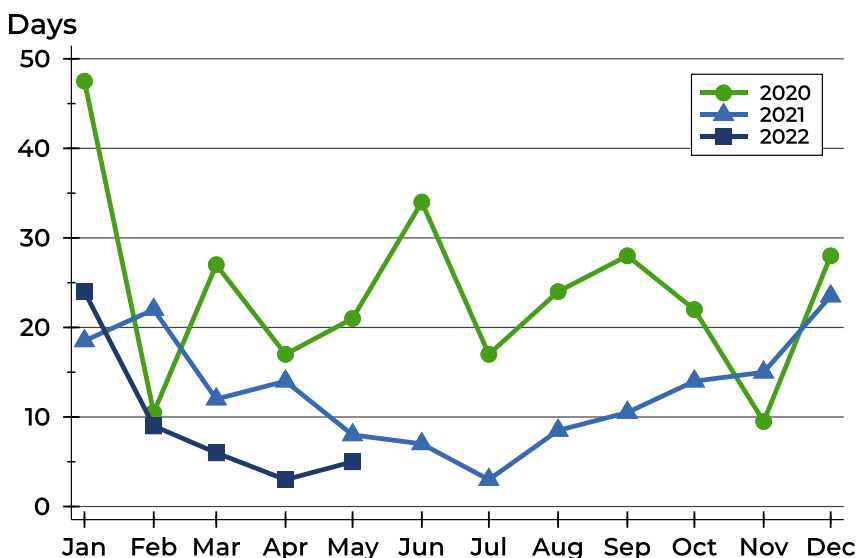
Pottawatomie County Closed Listings Analysis

Average DOM



Month	2020	2021	2022
January	118	65	40
February	39	41	30
March	88	28	26
April	32	35	19
May	41	32	26
June	47	32	
July	25	10	
August	38	32	
September	48	27	
October	46	34	
November	19	35	
December	35	55	

Median DOM



Month	2020	2021	2022
January	48	19	24
February	11	22	9
March	27	12	6
April	17	14	3
May	21	8	5
June	34	7	
July	17	3	
August	24	9	
September	28	11	
October	22	14	
November	10	15	
December	28	24	



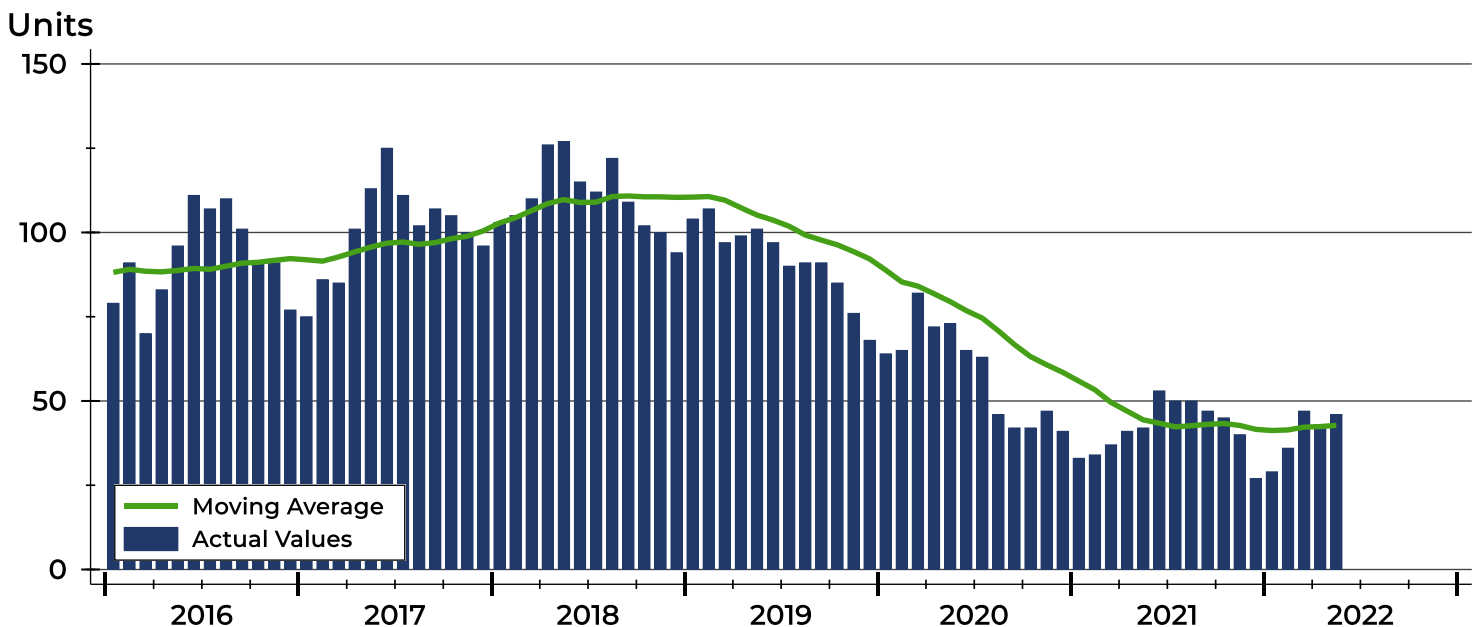
Pottawatomie County Active Listings Analysis

Summary Statistics for Active Listings		2022	End of May 2021	Change
Active Listings		46	42	9.5%
Volume (1,000s)		16,215	14,162	14.5%
Months' Supply		1.5	1.3	15.4%
Average	List Price	352,492	337,200	4.5%
	Days on Market	64	56	14.3%
	Percent of Original	98.9%	99.6%	-0.7%
Median	List Price	380,000	329,450	15.3%
	Days on Market	39	46	-15.2%
	Percent of Original	100.0%	100.0%	0.0%

A total of 46 homes were available for sale in Pottawatomie County at the end of May. This represents a 1.5 months' supply of active listings.

The median list price of homes on the market at the end of May was \$380,000, up 15.3% from 2021. The typical time on market for active listings was 39 days, down from 46 days a year earlier.

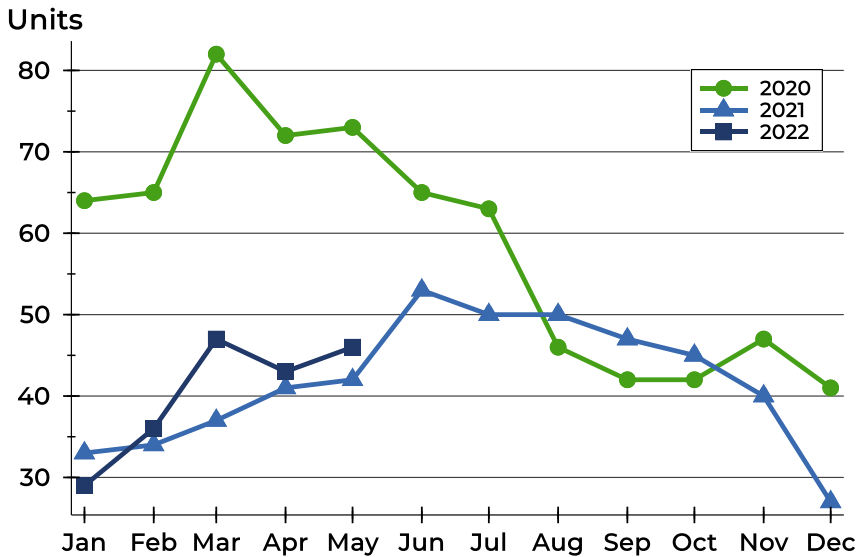
History of Active Listings





Pottawatomie County Active Listings Analysis

Active Listings by Month



Month	2020	2021	2022
January	64	33	29
February	65	34	36
March	82	37	47
April	72	41	43
May	73	42	46
June	65	53	
July	63	50	
August	46	50	
September	42	47	
October	42	45	
November	47	40	
December	41	27	

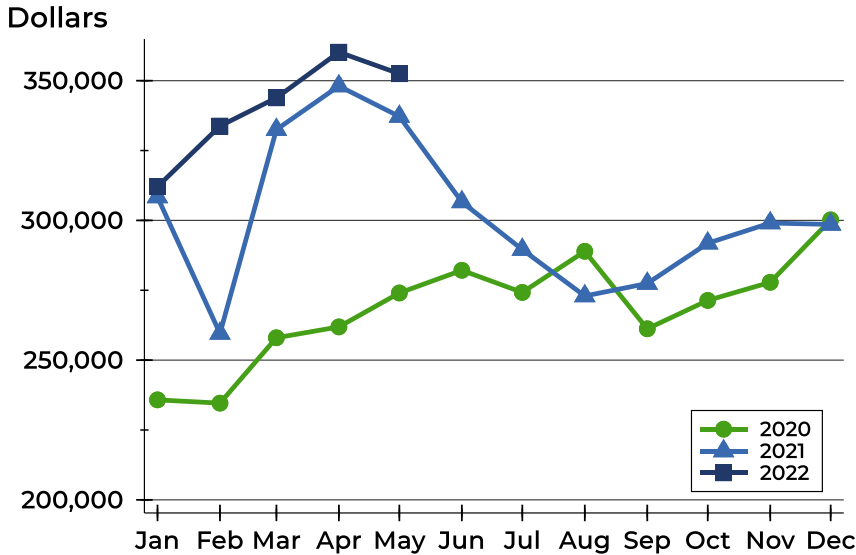
Active Listings by Price Range

Price Range	Active Listings		Months' Supply	List Price		Days on Market		Price as % of Orig.	
	Number	Percent		Average	Median	Avg.	Med.	Avg.	Med.
Below \$25,000	0	0.0%	N/A	N/A	N/A	N/A	N/A	N/A	N/A
\$25,000-\$49,999	0	0.0%	N/A	N/A	N/A	N/A	N/A	N/A	N/A
\$50,000-\$99,999	2	4.3%	2.4	89,500	89,500	20	20	94.9%	94.9%
\$100,000-\$124,999	1	2.2%	1.3	110,000	110,000	56	56	100.0%	100.0%
\$125,000-\$149,999	2	4.3%	N/A	127,475	127,475	11	11	100.0%	100.0%
\$150,000-\$174,999	2	4.3%	1.3	168,900	168,900	83	83	100.0%	100.0%
\$175,000-\$199,999	2	4.3%	0.8	191,500	191,500	36	36	96.2%	96.2%
\$200,000-\$249,999	2	4.3%	0.4	226,000	226,000	158	158	100.0%	100.0%
\$250,000-\$299,999	3	6.5%	0.4	281,633	280,000	21	14	100.0%	100.0%
\$300,000-\$399,999	15	32.6%	1.6	364,353	370,000	71	61	100.1%	100.0%
\$400,000-\$499,999	13	28.3%	5.0	429,823	429,000	70	40	97.5%	100.0%
\$500,000-\$749,999	4	8.7%	3.4	650,000	662,500	53	51	100.0%	100.0%
\$750,000-\$999,999	0	0.0%	N/A	N/A	N/A	N/A	N/A	N/A	N/A
\$1,000,000 and up	0	0.0%	N/A	N/A	N/A	N/A	N/A	N/A	N/A



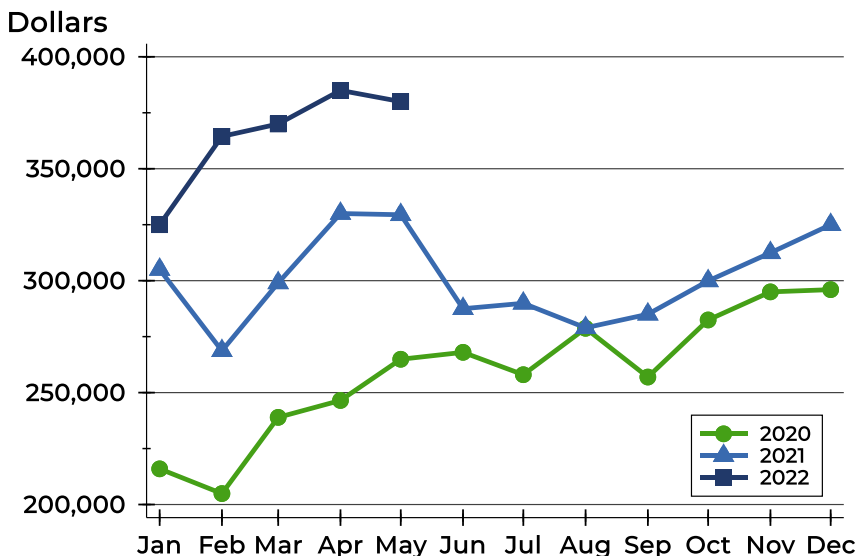
Pottawatomie County Active Listings Analysis

Average Price



Month	2020	2021	2022
January	235,787	308,385	312,066
February	234,610	259,565	333,767
March	258,014	332,489	343,857
April	261,901	348,095	360,213
May	274,036	337,200	352,492
June	282,150	306,614	
July	274,238	289,574	
August	288,946	272,958	
September	261,224	277,430	
October	271,369	291,840	
November	277,857	299,078	
December	300,205	298,563	

Median Price

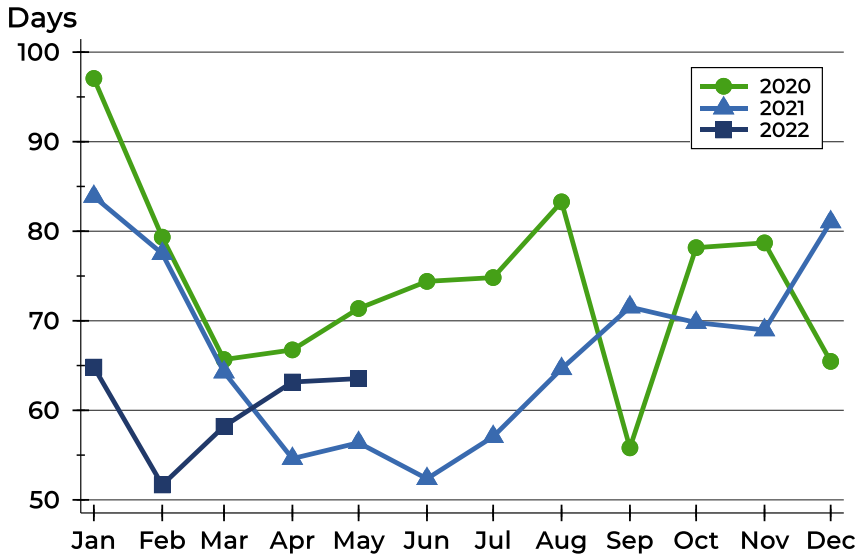


Month	2020	2021	2022
January	215,950	305,000	325,000
February	204,900	268,700	364,450
March	238,950	299,000	370,000
April	246,500	330,000	385,000
May	264,900	329,450	380,000
June	268,000	287,500	
July	258,000	289,900	
August	278,725	278,950	
September	256,950	285,000	
October	282,450	299,900	
November	295,000	312,450	
December	296,000	325,000	



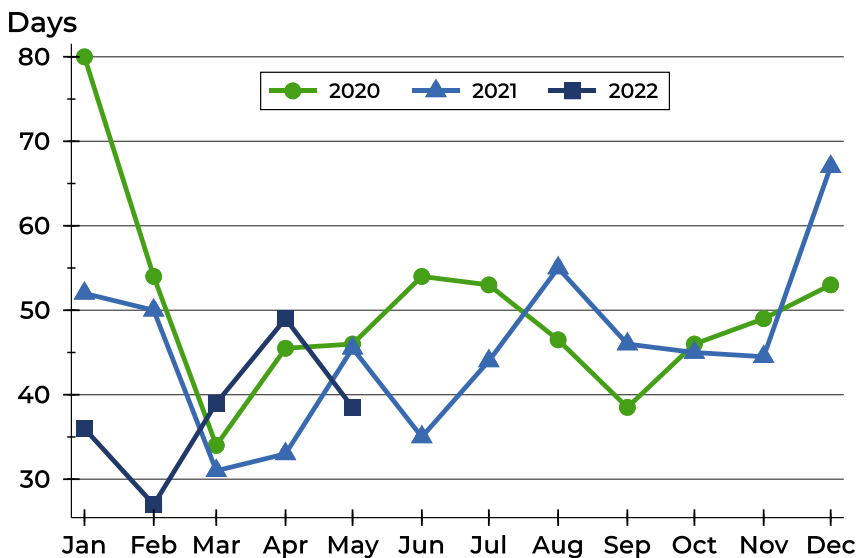
Pottawatomie County Active Listings Analysis

Average DOM



Month	2020	2021	2022
January	97	84	65
February	79	78	52
March	66	64	58
April	67	55	63
May	71	56	64
June	74	52	
July	75	57	
August	83	65	
September	56	72	
October	78	70	
November	79	69	
December	65	81	

Median DOM

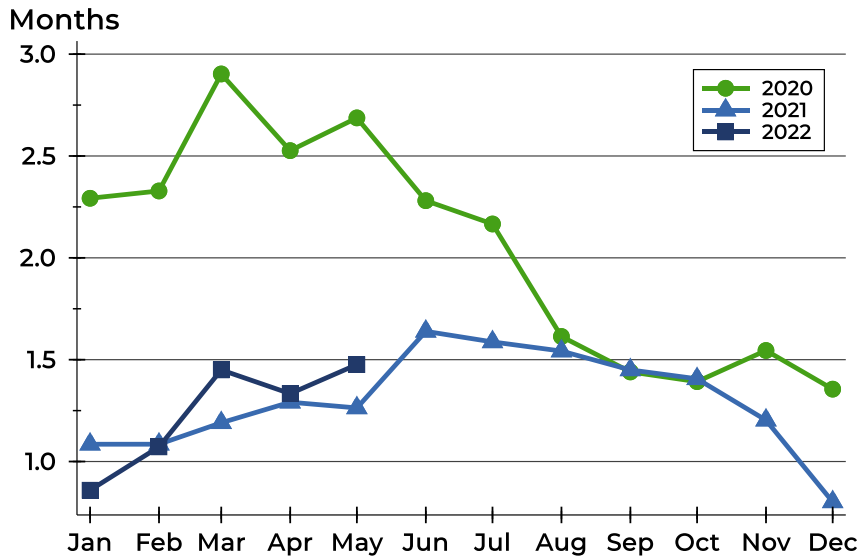


Month	2020	2021	2022
January	80	52	36
February	54	50	27
March	34	31	39
April	46	33	49
May	46	46	39
June	54	35	
July	53	44	
August	47	55	
September	39	46	
October	46	45	
November	49	45	
December	53	67	



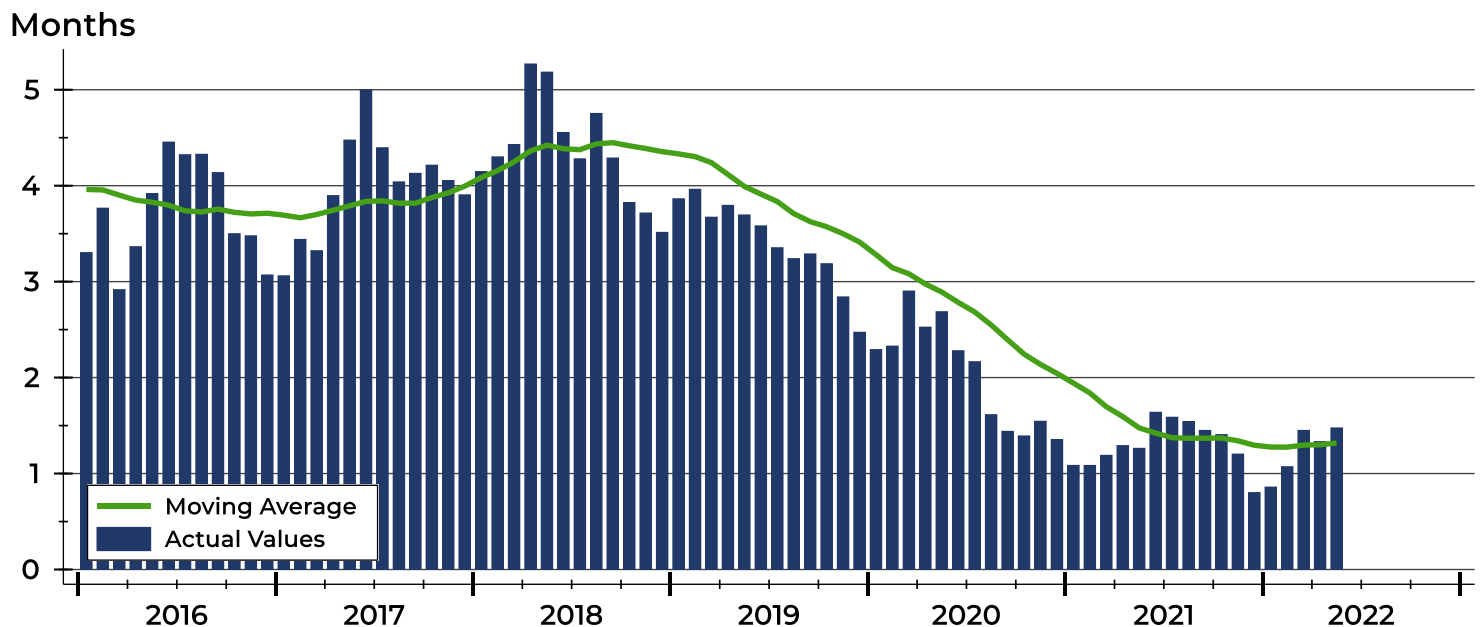
Pottawatomie County Months' Supply Analysis

Months' Supply by Month



Month	2020	2021	2022
January	2.3	1.1	0.9
February	2.3	1.1	1.1
March	2.9	1.2	1.4
April	2.5	1.3	1.3
May	2.7	1.3	1.5
June	2.3	1.6	1.6
July	2.2	1.6	1.6
August	1.6	1.5	1.5
September	1.4	1.4	1.4
October	1.4	1.4	1.4
November	1.5	1.2	1.2
December	1.4	0.8	0.8

History of Month's Supply





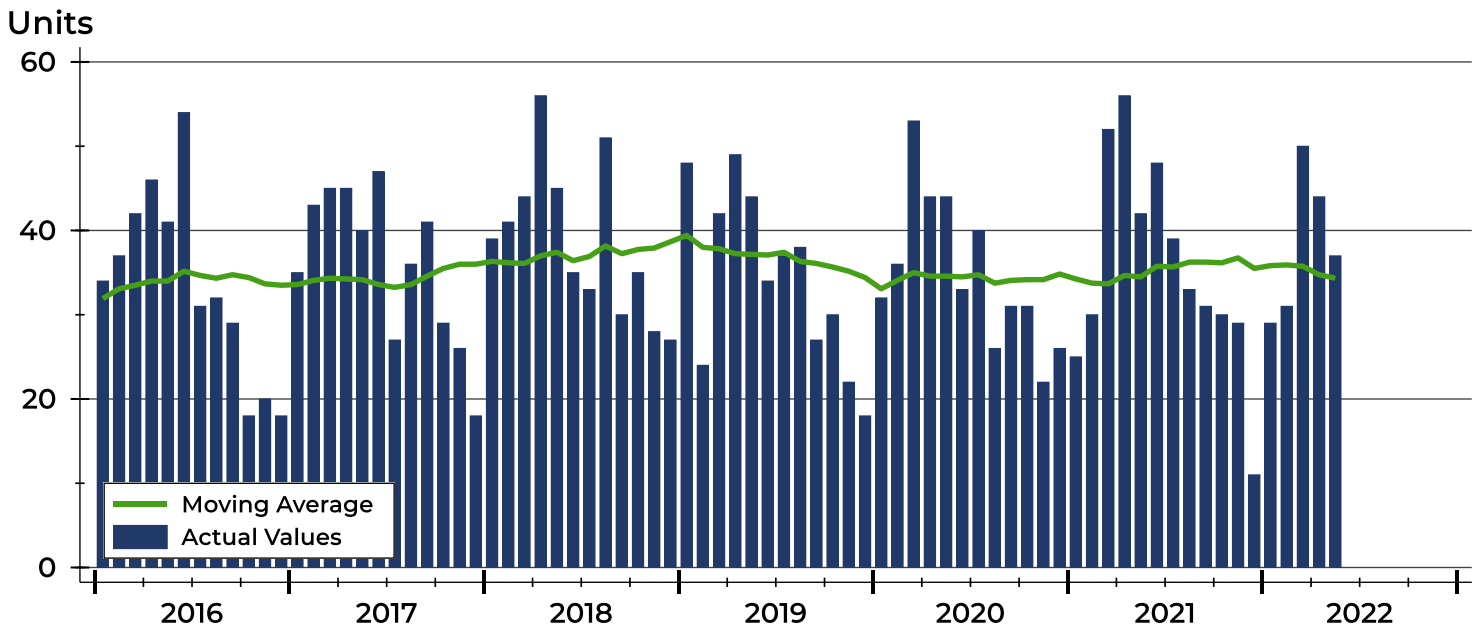
Pottawatomie County New Listings Analysis

Summary Statistics for New Listings		2022	May 2021	Change
Current Month	New Listings	37	42	-11.9%
	Volume (1,000s)	12,007	10,817	11.0%
	Average List Price	324,511	257,544	26.0%
	Median List Price	330,000	242,450	36.1%
Year-to-Date	New Listings	191	205	-6.8%
	Volume (1,000s)	63,064	57,848	9.0%
	Average List Price	330,180	282,186	17.0%
	Median List Price	335,000	270,000	24.1%

A total of 37 new listings were added in Pottawatomie County during May, down 11.9% from the same month in 2021. Year-to-date Pottawatomie County has seen 191 new listings.

The median list price of these homes was \$330,000 up from \$242,450 in 2021.

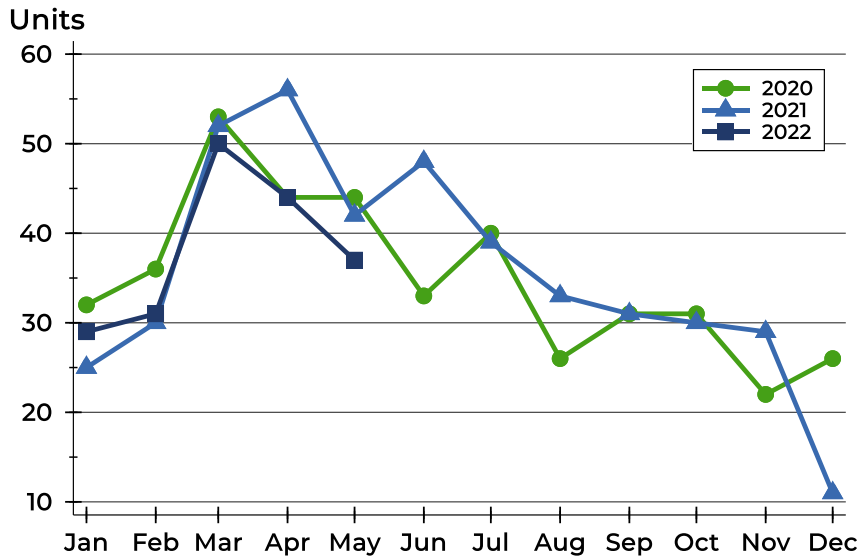
History of New Listings





Pottawatomie County New Listings Analysis

New Listings by Month



Month	2020	2021	2022
January	32	25	29
February	36	30	31
March	53	52	50
April	44	56	44
May	44	42	37
June	33	48	
July	40	39	
August	26	33	
September	31	31	
October	31	30	
November	22	29	
December	26	11	

New Listings by Price Range

Price Range	New Listings		List Price		Days on Market		Price as % of Orig.	
	Number	Percent	Average	Median	Avg.	Med.	Avg.	Med.
Below \$25,000	0	0.0%	N/A	N/A	N/A	N/A	N/A	N/A
\$25,000-\$49,999	0	0.0%	N/A	N/A	N/A	N/A	N/A	N/A
\$50,000-\$99,999	2	5.4%	89,500	89,500	26	26	94.9%	94.9%
\$100,000-\$124,999	2	5.4%	113,500	113,500	4	4	100.0%	100.0%
\$125,000-\$149,999	1	2.7%	129,950	129,950	9	9	100.0%	100.0%
\$150,000-\$174,999	0	0.0%	N/A	N/A	N/A	N/A	N/A	N/A
\$175,000-\$199,999	2	5.4%	182,000	182,000	22	22	96.2%	96.2%
\$200,000-\$249,999	1	2.7%	245,000	245,000	0	0	100.0%	100.0%
\$250,000-\$299,999	6	16.2%	277,167	277,500	14	16	99.4%	100.0%
\$300,000-\$399,999	15	40.5%	353,963	342,000	13	11	99.3%	100.0%
\$400,000-\$499,999	6	16.2%	428,333	429,000	13	10	100.0%	100.0%
\$500,000-\$749,999	2	5.4%	659,750	659,750	24	24	100.0%	100.0%
\$750,000-\$999,999	0	0.0%	N/A	N/A	N/A	N/A	N/A	N/A
\$1,000,000 and up	0	0.0%	N/A	N/A	N/A	N/A	N/A	N/A



**May
2022**

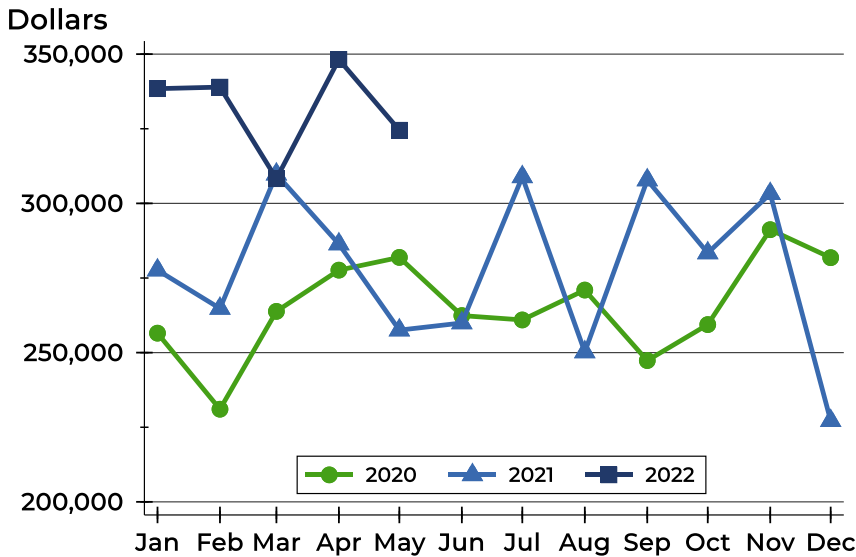
Flint Hills MLS Statistics



**FLINT HILLS
ASSOCIATION
OF REALTORS®**

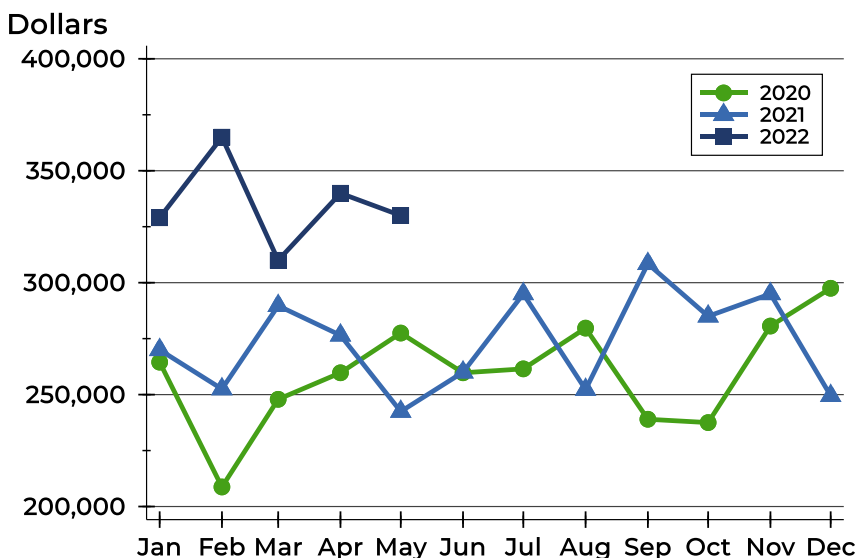
Pottawatomie County New Listings Analysis

Average Price



Month	2020	2021	2022
January	256,523	277,640	338,438
February	231,047	264,803	338,952
March	263,816	309,779	308,271
April	277,634	286,386	348,220
May	281,910	257,544	324,511
June	262,417	259,931	
July	260,954	308,895	
August	270,965	250,224	
September	247,342	307,825	
October	259,397	283,383	
November	291,191	303,241	
December	281,819	227,186	

Median Price



Month	2020	2021	2022
January	264,500	270,000	329,000
February	208,750	252,500	365,000
March	247,900	289,700	310,000
April	259,750	276,500	339,950
May	277,500	242,450	330,000
June	259,750	260,000	
July	261,500	295,000	
August	279,700	252,250	
September	239,000	308,450	
October	237,500	285,000	
November	280,635	295,000	
December	297,500	249,500	



**May
2022**

Flint Hills MLS Statistics



**FLINT HILLS
ASSOCIATION
OF REALTORS®**

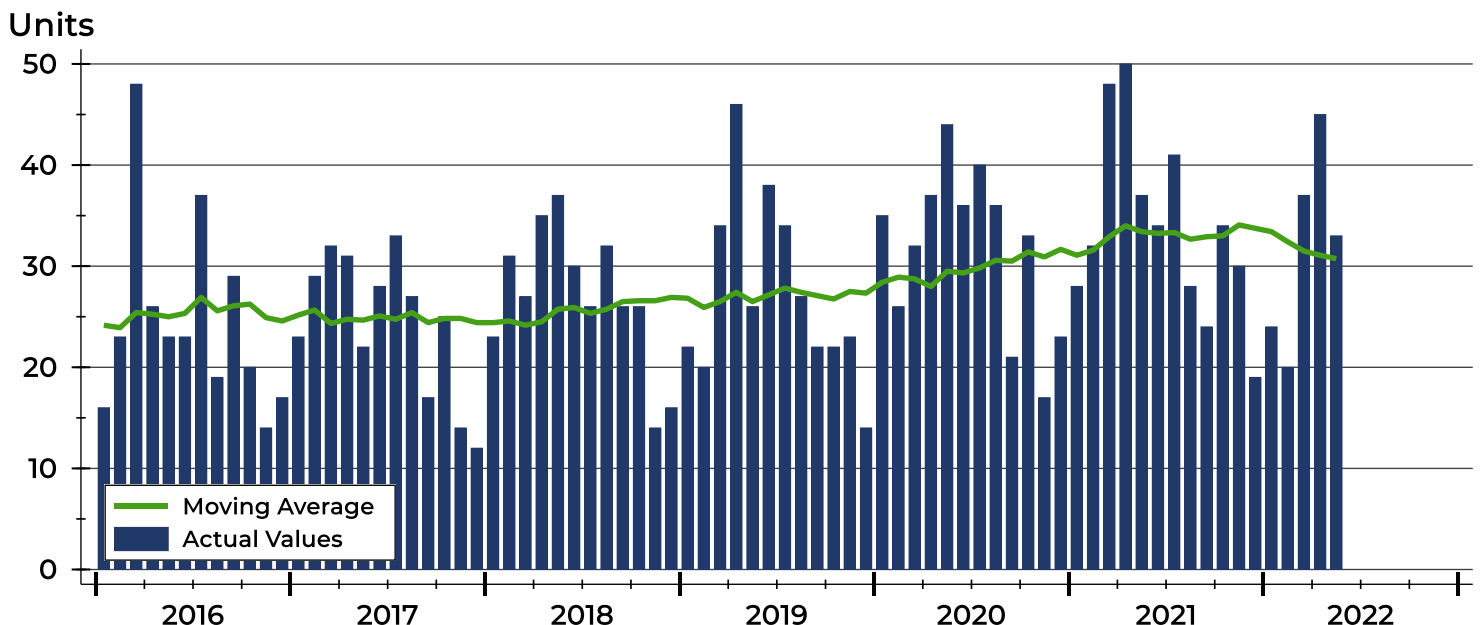
Pottawatomie County Contracts Written Analysis

Summary Statistics for Contracts Written		2022	May 2021	Change	Year-to-Date		
		2022	2021		2022	2021	Change
Contracts Written		33	37	-10.8%	159	195	-18.5%
Volume (1,000s)		10,791	9,867	9.4%	49,973	53,031	-5.8%
Average	Sale Price	326,998	266,667	22.6%	314,298	271,955	15.6%
	Days on Market	33	26	26.9%	24	29	-17.2%
	Percent of Original	99.3%	101.5%	-2.2%	100.5%	99.5%	1.0%
Median	Sale Price	335,000	274,900	21.9%	325,000	269,000	20.8%
	Days on Market	8	3	166.7%	6	7	-14.3%
	Percent of Original	100.0%	100.0%	0.0%	100.0%	100.0%	0.0%

A total of 33 contracts for sale were written in Pottawatomie County during the month of May, down from 37 in 2021. The median list price of these homes was \$335,000, up from \$274,900 the prior year.

Half of the homes that went under contract in May were on the market less than 8 days, compared to 3 days in May 2021.

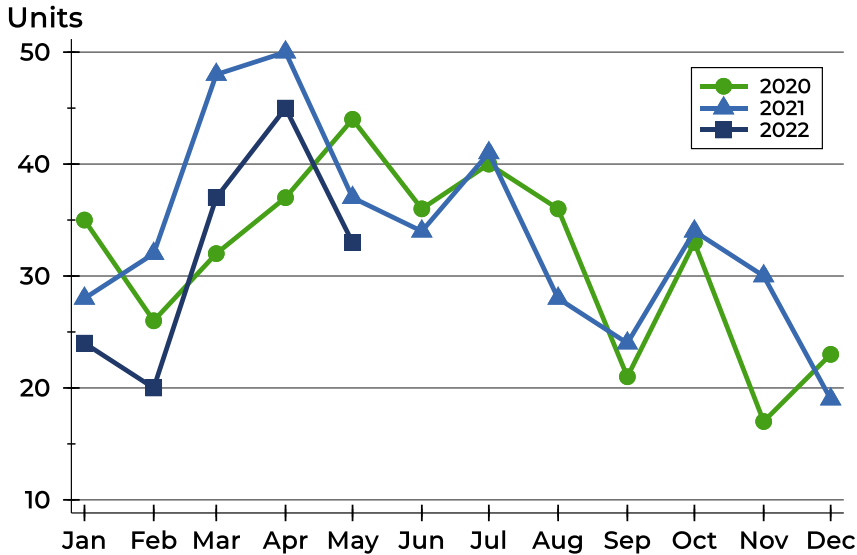
History of Contracts Written





Pottawatomie County Contracts Written Analysis

Contracts Written by Month



Month	2020	2021	2022
January	35	28	24
February	26	32	20
March	32	48	37
April	37	50	45
May	44	37	33
June	36	34	
July	40	41	
August	36	28	
September	21	24	
October	33	34	
November	17	30	
December	23	19	

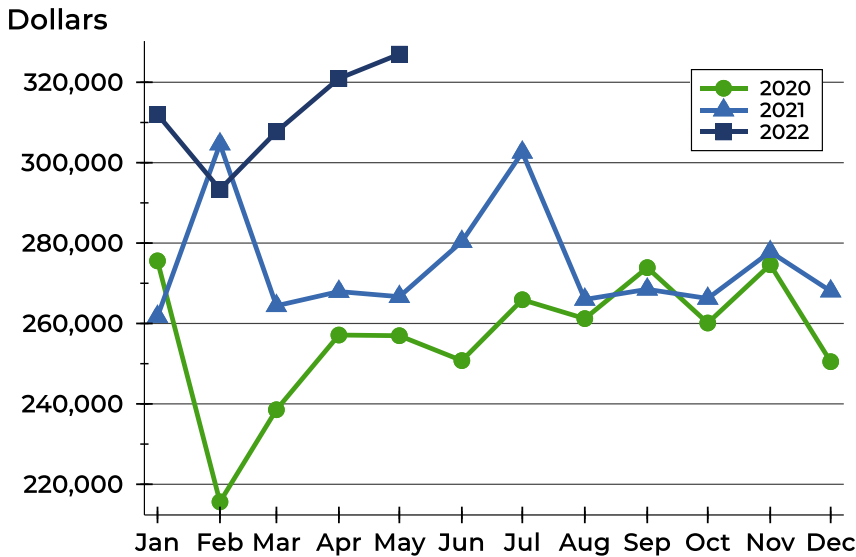
Contracts Written by Price Range

Price Range	Contracts Written		List Price		Days on Market		Price as % of Orig.	
	Number	Percent	Average	Median	Avg.	Med.	Avg.	Med.
Below \$25,000	0	0.0%	N/A	N/A	N/A	N/A	N/A	N/A
\$25,000-\$49,999	0	0.0%	N/A	N/A	N/A	N/A	N/A	N/A
\$50,000-\$99,999	1	3.0%	94,000	94,000	76	76	90.4%	90.4%
\$100,000-\$124,999	2	6.1%	113,500	113,500	4	4	100.0%	100.0%
\$125,000-\$149,999	0	0.0%	N/A	N/A	N/A	N/A	N/A	N/A
\$150,000-\$174,999	0	0.0%	N/A	N/A	N/A	N/A	N/A	N/A
\$175,000-\$199,999	1	3.0%	179,000	179,000	8	8	100.0%	100.0%
\$200,000-\$249,999	1	3.0%	245,000	245,000	0	0	100.0%	100.0%
\$250,000-\$299,999	6	18.2%	281,325	280,000	44	21	99.4%	100.0%
\$300,000-\$399,999	13	39.4%	350,969	340,000	20	7	99.3%	100.0%
\$400,000-\$499,999	9	27.3%	421,711	410,000	53	16	100.0%	100.0%
\$500,000-\$749,999	0	0.0%	N/A	N/A	N/A	N/A	N/A	N/A
\$750,000-\$999,999	0	0.0%	N/A	N/A	N/A	N/A	N/A	N/A
\$1,000,000 and up	0	0.0%	N/A	N/A	N/A	N/A	N/A	N/A



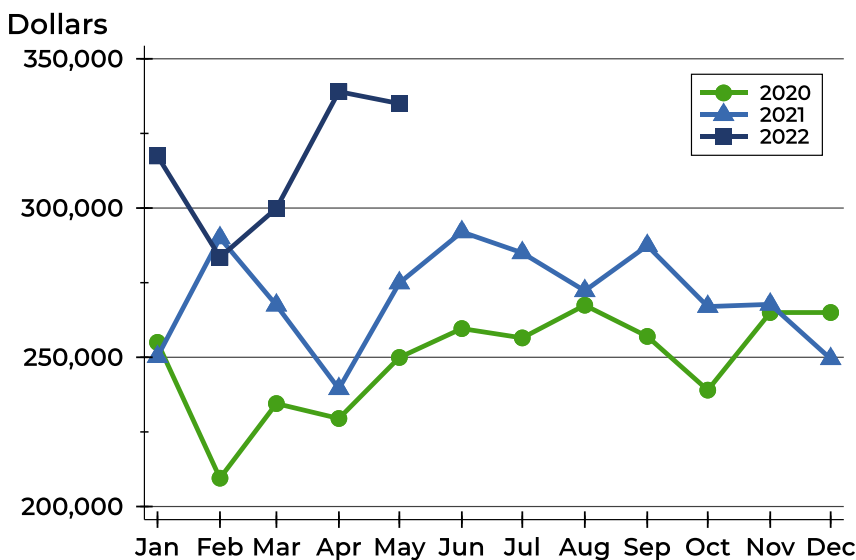
Pottawatomie County Contracts Written Analysis

Average Price



Month	2020	2021	2022
January	275,577	261,718	312,029
February	215,623	304,628	293,336
March	238,542	264,400	307,688
April	257,123	267,945	320,944
May	256,959	266,667	326,998
June	250,765	280,366	
July	265,908	302,572	
August	261,211	265,977	
September	273,890	268,499	
October	260,115	266,221	
November	274,623	277,837	
December	250,496	268,045	

Median Price

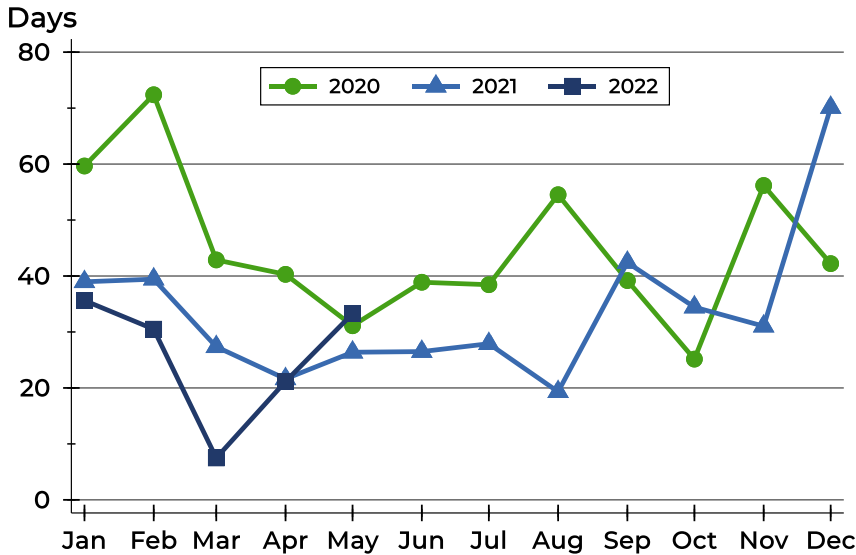


Month	2020	2021	2022
January	255,000	250,200	317,450
February	209,500	290,000	283,500
March	234,500	267,450	299,900
April	229,500	239,450	339,000
May	249,945	274,900	335,000
June	259,625	292,000	
July	256,500	285,000	
August	267,450	272,280	
September	257,000	287,400	
October	239,000	267,000	
November	265,000	267,750	
December	265,000	249,500	



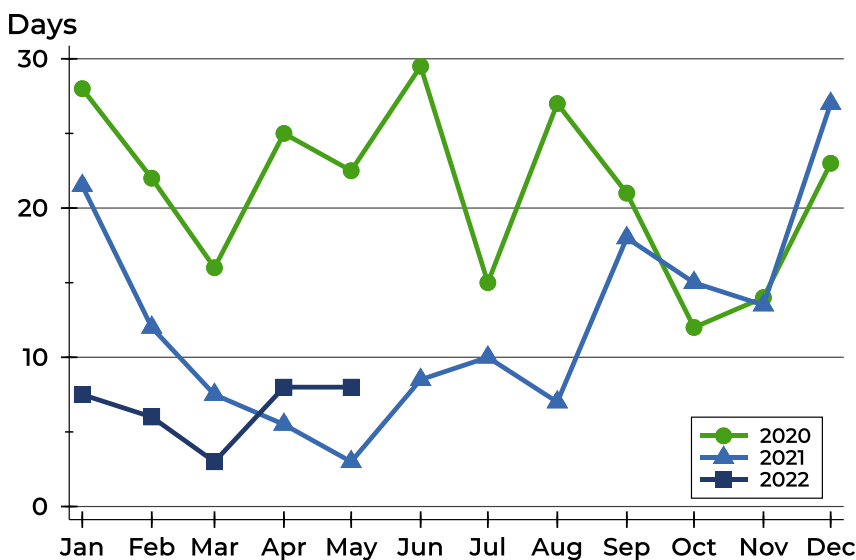
Pottawatomie County Contracts Written Analysis

Average DOM



Month	2020	2021	2022
January	60	39	36
February	72	39	31
March	43	27	7
April	40	22	21
May	31	26	33
June	39	27	
July	38	28	
August	55	19	
September	39	42	
October	25	34	
November	56	31	
December	42	70	

Median DOM



Month	2020	2021	2022
January	28	22	8
February	22	12	6
March	16	8	3
April	25	6	8
May	23	3	8
June	30	9	
July	15	10	
August	27	7	
September	21	18	
October	12	15	
November	14	14	
December	23	27	



Pottawatomie County Pending Contracts Analysis

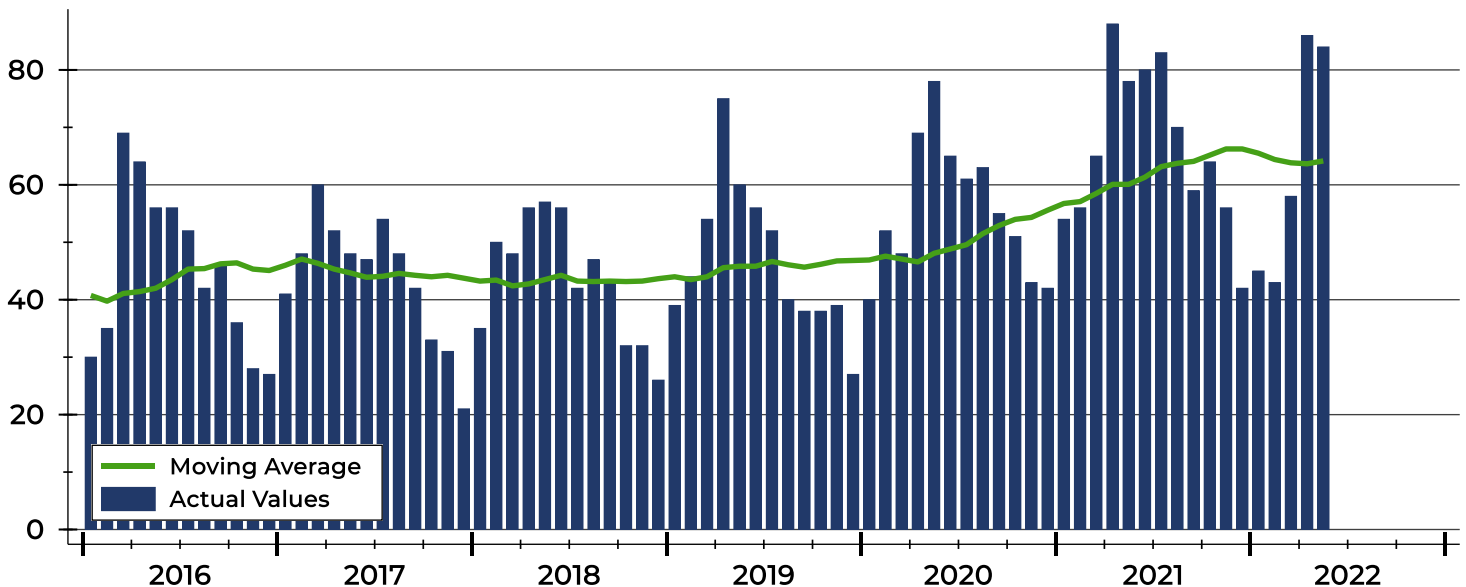
Summary Statistics for Pending Contracts		2022	End of May 2021	Change
Pending Contracts		84	78	7.7%
Volume (1,000s)		27,483	20,707	32.7%
Average	List Price	327,180	265,473	23.2%
	Days on Market	25	31	-19.4%
	Percent of Original	100.0%	99.5%	0.5%
Median	List Price	335,000	247,500	35.4%
	Days on Market	7	5	40.0%
	Percent of Original	100.0%	100.0%	0.0%

A total of 84 listings in Pottawatomie County had contracts pending at the end of May, up from 78 contracts pending at the end of May 2021.

Pending contracts reflect listings with a contract in place at the end of the month. In contrast, contracts written measures the number of listings put under contract during the month.

History of Pending Contracts

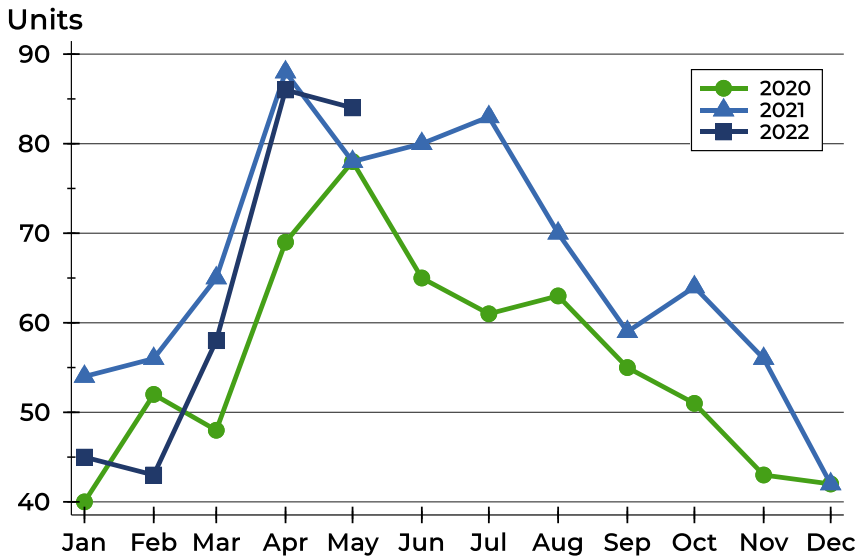
Units





Pottawatomie County Pending Contracts Analysis

Pending Contracts by Month



Month	2020	2021	2022
January	40	54	45
February	52	56	43
March	48	65	58
April	69	88	86
May	78	78	84
June	65	80	
July	61	83	
August	63	70	
September	55	59	
October	51	64	
November	43	56	
December	42	42	

Pending Contracts by Price Range

Price Range	Pending Contracts		List Price		Days on Market		Price as % of Orig.	
	Number	Percent	Average	Median	Avg.	Med.	Avg.	Med.
Below \$25,000	0	0.0%	N/A	N/A	N/A	N/A	N/A	N/A
\$25,000-\$49,999	0	0.0%	N/A	N/A	N/A	N/A	N/A	N/A
\$50,000-\$99,999	1	1.2%	94,000	94,000	76	76	90.4%	90.4%
\$100,000-\$124,999	2	2.4%	113,500	113,500	4	4	100.0%	100.0%
\$125,000-\$149,999	0	0.0%	N/A	N/A	N/A	N/A	N/A	N/A
\$150,000-\$174,999	1	1.2%	155,000	155,000	15	15	100.0%	100.0%
\$175,000-\$199,999	3	3.6%	184,633	185,000	3	1	100.0%	100.0%
\$200,000-\$249,999	9	10.7%	231,911	235,000	35	4	100.0%	100.0%
\$250,000-\$299,999	15	17.9%	279,857	282,000	29	15	102.0%	100.0%
\$300,000-\$399,999	36	42.9%	349,890	345,000	16	6	99.5%	100.0%
\$400,000-\$499,999	15	17.9%	424,760	410,000	42	19	100.0%	100.0%
\$500,000-\$749,999	2	2.4%	600,356	600,356	9	9	100.0%	100.0%
\$750,000-\$999,999	0	0.0%	N/A	N/A	N/A	N/A	N/A	N/A
\$1,000,000 and up	0	0.0%	N/A	N/A	N/A	N/A	N/A	N/A



**May
2022**

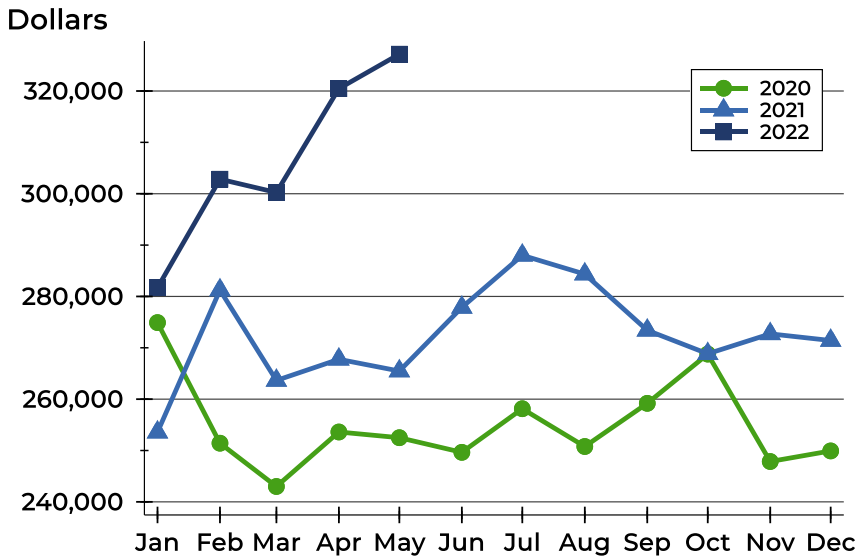
Flint Hills MLS Statistics



**FLINT HILLS
ASSOCIATION
OF REALTORS®**

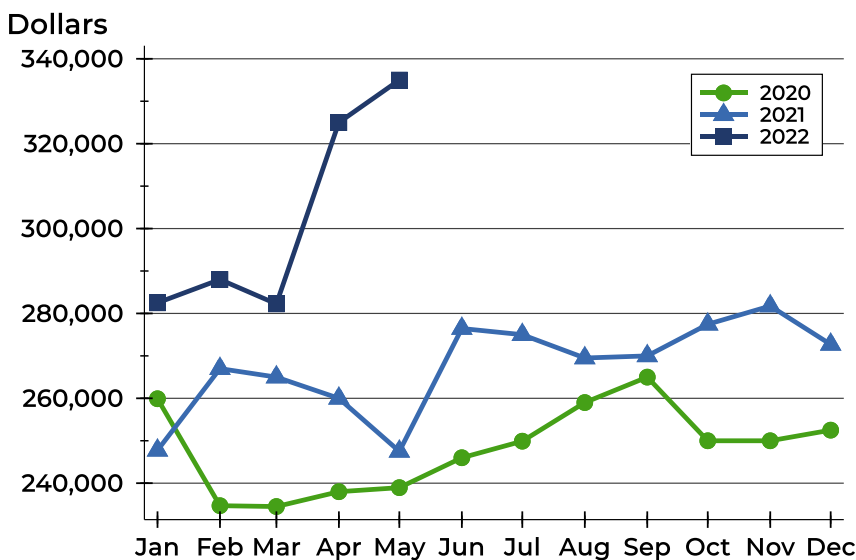
Pottawatomie County Pending Contracts Analysis

Average Price



Month	2020	2021	2022
January	274,908	253,565	281,700
February	251,427	281,241	302,832
March	242,995	263,641	300,248
April	253,607	267,766	320,470
May	252,496	265,473	327,180
June	249,649	277,862	
July	258,138	288,006	
August	250,781	284,350	
September	259,189	273,403	
October	268,773	268,839	
November	247,860	272,718	
December	249,923	271,423	

Median Price

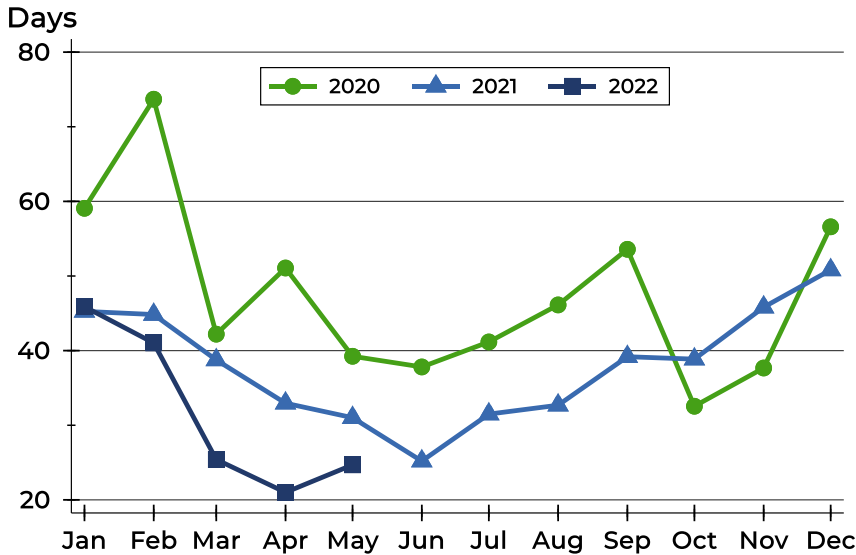


Month	2020	2021	2022
January	259,900	247,750	282,500
February	234,700	267,000	288,000
March	234,500	265,000	282,250
April	238,000	260,000	325,000
May	238,950	247,500	335,000
June	246,000	276,450	
July	249,900	275,000	
August	259,000	269,500	
September	265,000	270,000	
October	250,000	277,450	
November	250,000	281,750	
December	252,500	272,700	



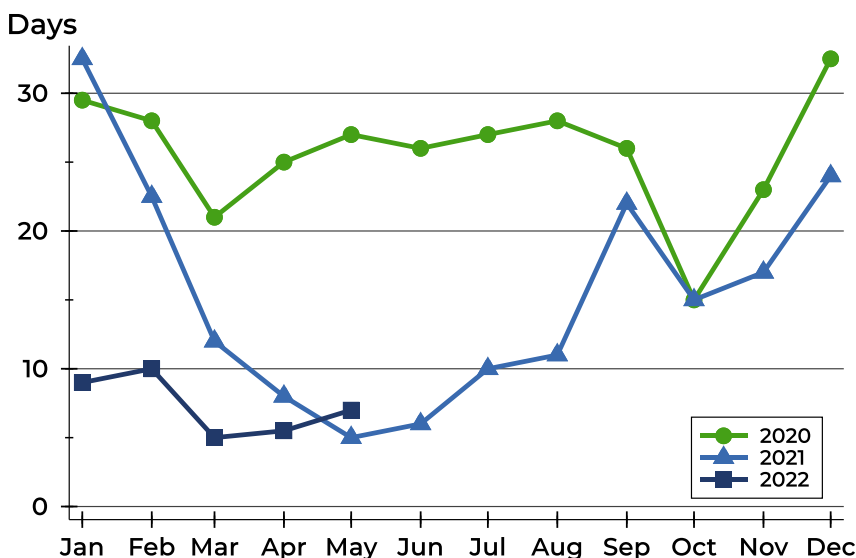
Pottawatomie County Pending Contracts Analysis

Average DOM



Month	2020	2021	2022
January	59	45	46
February	74	45	41
March	42	39	25
April	51	33	21
May	39	31	25
June	38	25	
July	41	31	
August	46	33	
September	54	39	
October	33	39	
November	38	46	
December	57	51	

Median DOM



Month	2020	2021	2022
January	30	33	9
February	28	23	10
March	21	12	5
April	25	8	6
May	27	5	7
June	26	6	
July	27	10	
August	28	11	
September	26	22	
October	15	15	
November	23	17	
December	33	24	