



**October  
2023**

# Flint Hills MLS Statistics



**FLINT HILLS  
ASSOCIATION  
OF REALTORS®**

## Pottawatomie County Housing Report



### Market Overview

#### Pottawatomie County Home Sales Fell in October

Total home sales in Pottawatomie County fell last month to 22 units, compared to 24 units in October 2022. Total sales volume was \$5.9 million, down from a year earlier.

The median sale price in October was \$249,000, down from \$297,500 a year earlier. Homes that sold in October were typically on the market for 20 days and sold for 97.6% of their list prices.

#### Pottawatomie County Active Listings Down at End of October

The total number of active listings in Pottawatomie County at the end of October was 49 units, down from 57 at the same point in 2022. This represents a 2.0 months' supply of homes available for sale. The median list price of homes on the market at the end of October was \$324,900.

During October, a total of 21 contracts were written down from 24 in October 2022. At the end of the month, there were 34 contracts still pending.

### Report Contents

- Summary Statistics – Page 2
- Closed Listing Analysis – Page 3
- Active Listings Analysis – Page 7
- Months' Supply Analysis – Page 11
- New Listings Analysis – Page 12
- Contracts Written Analysis – Page 15
- Pending Contracts Analysis – Page 19

### Contact Information

Margaret Pendleton, Association Executive  
 Flint Hills Association of REALTORS®  
 205 S. Seth Child Road  
 Manhattan, KS 66502  
 785-776-1203  
[ae@flinthillsrealtors.net](mailto:ae@flinthillsrealtors.net)  
[www.flinthillsrealtors.net](http://www.flinthillsrealtors.net)



## Pottawatomie County Summary Statistics

October MLS Statistics Three-year History		Current Month			Year-to-Date		
		2023	2022	2021	2023	2022	2021
<b>Home Sales</b>		<b>22</b>	<b>24</b>	<b>30</b>	<b>248</b>	<b>293</b>	<b>335</b>
Change from prior year		-8.3%	-20.0%	-14.3%	-15.4%	-12.5%	6.7%
<b>Active Listings</b>		<b>49</b>	<b>57</b>	<b>45</b>	<b>N/A</b>	<b>N/A</b>	<b>N/A</b>
Change from prior year		-14.0%	26.7%	7.1%			
<b>Months' Supply</b>		<b>2.0</b>	<b>1.9</b>	<b>1.4</b>	<b>N/A</b>	<b>N/A</b>	<b>N/A</b>
Change from prior year		5.3%	35.7%	0.0%			
<b>New Listings</b>		<b>22</b>	<b>27</b>	<b>30</b>	<b>309</b>	<b>370</b>	<b>386</b>
Change from prior year		-18.5%	-10.0%	-3.2%	-16.5%	-4.1%	4.3%
<b>Contracts Written</b>		<b>21</b>	<b>24</b>	<b>34</b>	<b>257</b>	<b>289</b>	<b>356</b>
Change from prior year		-12.5%	-29.4%	3.0%	-11.1%	-18.8%	4.7%
<b>Pending Contracts</b>		<b>34</b>	<b>39</b>	<b>64</b>	<b>N/A</b>	<b>N/A</b>	<b>N/A</b>
Change from prior year		-12.8%	-39.1%	25.5%			
<b>Sales Volume (1,000s)</b>		<b>5,875</b>	<b>7,640</b>	<b>9,143</b>	<b>78,791</b>	<b>91,046</b>	<b>91,637</b>
Change from prior year		-23.1%	-16.4%	10.4%	-13.5%	-0.6%	16.5%
Average	<b>Sale Price</b>	<b>267,052</b>	<b>318,325</b>	<b>304,775</b>	<b>317,705</b>	<b>310,737</b>	<b>273,544</b>
	Change from prior year	-16.1%	4.4%	28.8%	2.2%	13.6%	9.2%
	<b>List Price of Actives</b>	<b>364,845</b>	<b>377,949</b>	<b>291,840</b>	<b>N/A</b>	<b>N/A</b>	<b>N/A</b>
	Change from prior year	-3.5%	29.5%	7.5%			
	<b>Days on Market</b>	<b>26</b>	<b>23</b>	<b>34</b>	<b>46</b>	<b>24</b>	<b>32</b>
Change from prior year	13.0%	-32.4%	-26.1%	91.7%	-25.0%	-34.7%	
<b>Percent of List</b>	<b>95.2%</b>	<b>97.9%</b>	<b>102.4%</b>	<b>99.0%</b>	<b>100.2%</b>	<b>100.1%</b>	
Change from prior year	-2.8%	-4.4%	2.2%	-1.2%	0.1%	1.1%	
<b>Percent of Original</b>	<b>93.4%</b>	<b>97.0%</b>	<b>101.6%</b>	<b>97.0%</b>	<b>99.7%</b>	<b>99.4%</b>	
Change from prior year	-3.7%	-4.5%	2.5%	-2.7%	0.3%	1.8%	
Median	<b>Sale Price</b>	<b>249,000</b>	<b>297,500</b>	<b>288,500</b>	<b>324,950</b>	<b>310,000</b>	<b>272,000</b>
	Change from prior year	-16.3%	3.1%	12.3%	4.8%	14.0%	9.7%
	<b>List Price of Actives</b>	<b>324,900</b>	<b>345,000</b>	<b>299,900</b>	<b>N/A</b>	<b>N/A</b>	<b>N/A</b>
	Change from prior year	-5.8%	15.0%	6.2%			
	<b>Days on Market</b>	<b>20</b>	<b>14</b>	<b>14</b>	<b>17</b>	<b>7</b>	<b>9</b>
Change from prior year	42.9%	0.0%	-36.4%	142.9%	-22.2%	-60.9%	
<b>Percent of List</b>	<b>97.6%</b>	<b>99.7%</b>	<b>100.0%</b>	<b>100.0%</b>	<b>100.0%</b>	<b>100.0%</b>	
Change from prior year	-2.1%	-0.3%	0.5%	0.0%	0.0%	0.4%	
<b>Percent of Original</b>	<b>97.6%</b>	<b>98.9%</b>	<b>99.8%</b>	<b>99.0%</b>	<b>100.0%</b>	<b>100.0%</b>	
Change from prior year	-1.3%	-0.9%	0.9%	-1.0%	0.0%	1.1%	

Note: Year-to-date statistics cannot be calculated for Active Listings, Months' Supply and Pending Contracts.



## Pottawatomie County Closed Listings Analysis

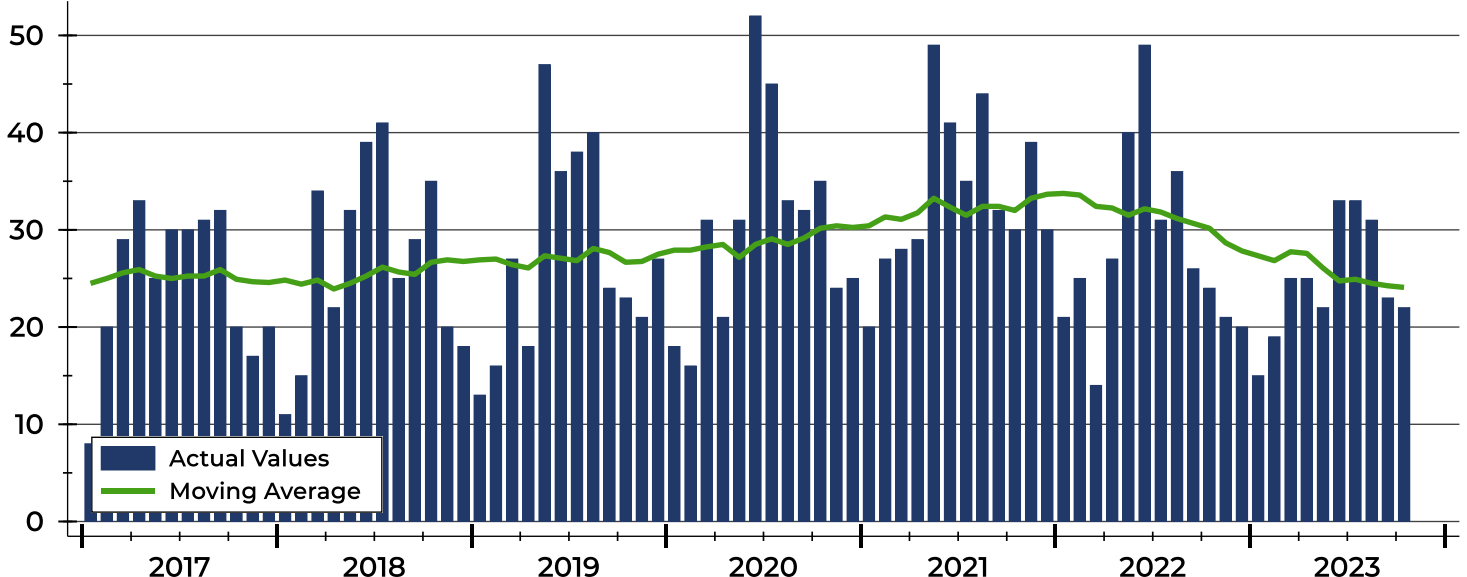
Summary Statistics for Closed Listings		2023	October 2022	Change	2023	Year-to-Date 2022	Change
Closed Listings		22	24	-8.3%	248	293	-15.4%
Volume (1,000s)		5,875	7,640	-23.1%	78,791	91,046	-13.5%
Months' Supply		2.0	1.9	5.3%	N/A	N/A	N/A
Average	Sale Price	267,052	318,325	-16.1%	317,705	310,737	2.2%
	Days on Market	26	23	13.0%	46	24	91.7%
	Percent of List	95.2%	97.9%	-2.8%	99.0%	100.2%	-1.2%
	Percent of Original	93.4%	97.0%	-3.7%	97.0%	99.7%	-2.7%
Median	Sale Price	249,000	297,500	-16.3%	324,950	310,000	4.8%
	Days on Market	20	14	42.9%	17	7	142.9%
	Percent of List	97.6%	99.7%	-2.1%	100.0%	100.0%	0.0%
	Percent of Original	97.6%	98.9%	-1.3%	99.0%	100.0%	-1.0%

A total of 22 homes sold in Pottawatomie County in October, down from 24 units in October 2022. Total sales volume fell to \$5.9 million compared to \$7.6 million in the previous year.

The median sales price in October was \$249,000, down 16.3% compared to the prior year. Median days on market was 20 days, down from 23 days in September, but up from 14 in October 2022.

## History of Closed Listings

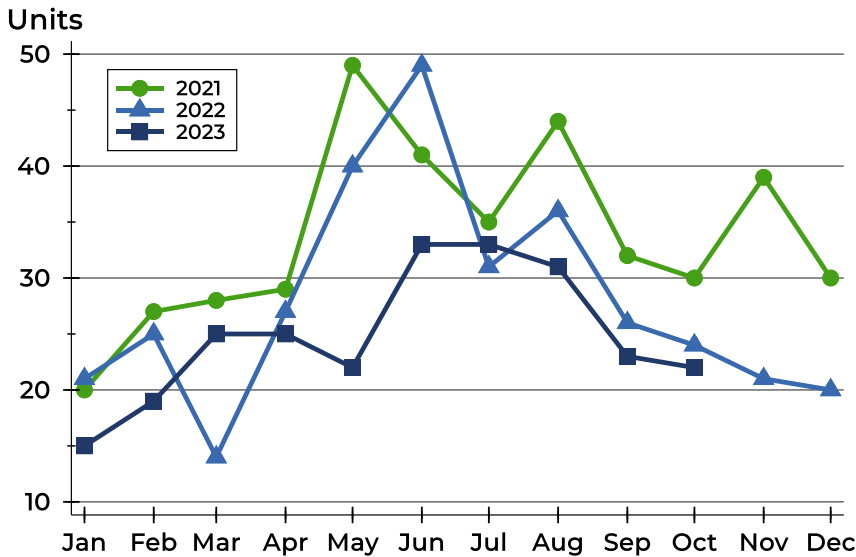
Units





## Pottawatomie County Closed Listings Analysis

### Closed Listings by Month



Month	2021	2022	2023
January	20	21	15
February	27	25	19
March	28	14	25
April	29	27	25
May	49	40	22
June	41	49	33
July	35	31	33
August	44	36	31
September	32	26	23
October	30	24	22
November	39	21	
December	30	20	

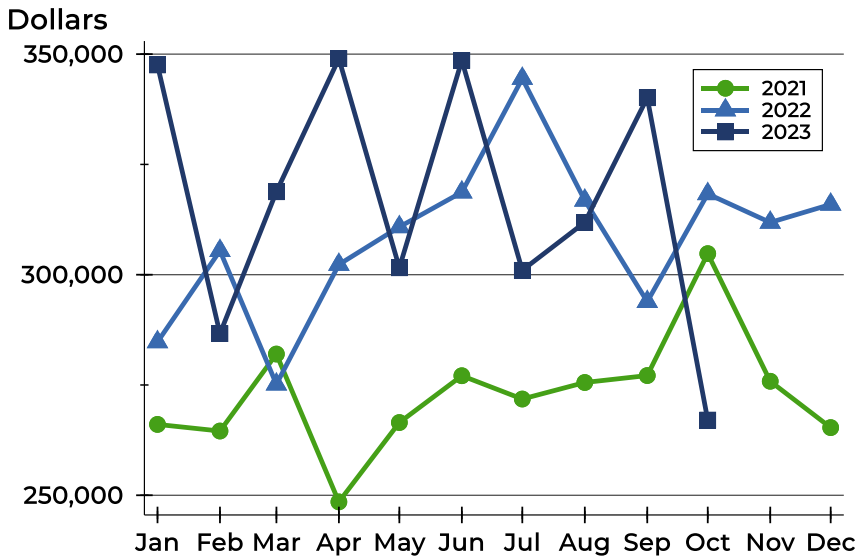
### Closed Listings by Price Range

Price Range	Sales		Months' Supply	Sale Price		Days on Market		Price as % of List		Price as % of Orig.	
	Number	Percent		Average	Median	Avg.	Med.	Avg.	Med.	Avg.	Med.
Below \$25,000	0	0.0%	N/A	N/A	N/A	N/A	N/A	N/A	N/A	N/A	N/A
\$25,000-\$49,999	0	0.0%	N/A	N/A	N/A	N/A	N/A	N/A	N/A	N/A	N/A
\$50,000-\$99,999	2	9.1%	0.0	82,500	82,500	78	78	83.1%	83.1%	76.2%	76.2%
\$100,000-\$124,999	1	4.5%	0.0	103,600	103,600	34	34	90.1%	90.1%	90.1%	90.1%
\$125,000-\$149,999	1	4.5%	6.0	140,920	140,920	8	8	97.2%	97.2%	97.2%	97.2%
\$150,000-\$174,999	1	4.5%	2.2	160,000	160,000	26	26	80.0%	80.0%	80.0%	80.0%
\$175,000-\$199,999	2	9.1%	1.7	182,750	182,750	4	4	96.4%	96.4%	96.4%	96.4%
\$200,000-\$249,999	4	18.2%	2.1	227,625	228,750	24	28	96.9%	99.0%	96.9%	99.0%
\$250,000-\$299,999	4	18.2%	2.1	262,500	260,500	48	31	94.0%	94.0%	88.2%	86.1%
\$300,000-\$399,999	5	22.7%	1.2	364,925	371,500	9	4	101.0%	101.8%	100.4%	100.9%
\$400,000-\$499,999	0	0.0%	1.9	N/A	N/A	N/A	N/A	N/A	N/A	N/A	N/A
\$500,000-\$749,999	2	9.1%	3.7	577,500	577,500	7	7	100.1%	100.1%	100.1%	100.1%
\$750,000-\$999,999	0	0.0%	N/A	N/A	N/A	N/A	N/A	N/A	N/A	N/A	N/A
\$1,000,000 and up	0	0.0%	N/A	N/A	N/A	N/A	N/A	N/A	N/A	N/A	N/A



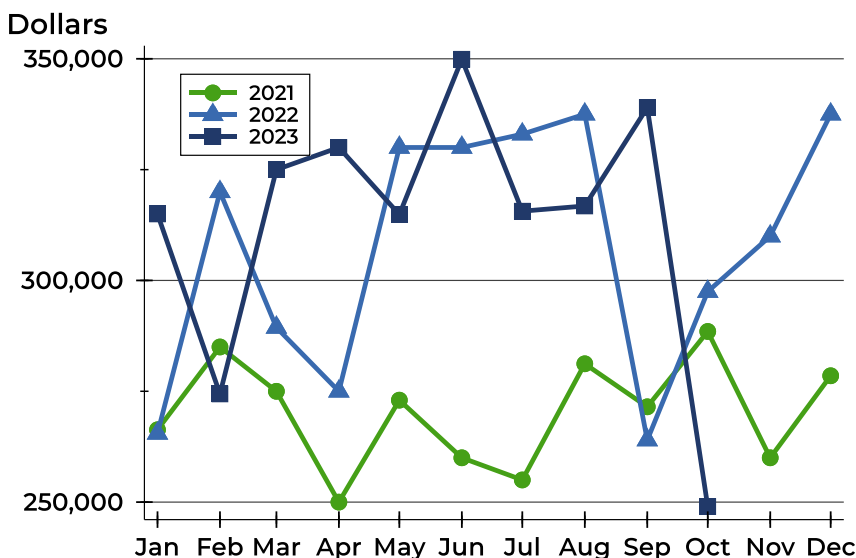
## Pottawatomie County Closed Listings Analysis

### Average Price



Month	2021	2022	2023
January	266,064	284,752	347,548
February	264,562	305,443	286,647
March	282,018	275,167	318,804
April	248,504	302,308	348,976
May	266,490	310,831	301,576
June	277,099	318,706	348,576
July	271,821	344,468	301,005
August	275,567	316,847	311,874
September	277,140	293,881	340,115
October	304,775	318,325	267,052
November	275,848	311,843	
December	265,343	315,935	

### Median Price

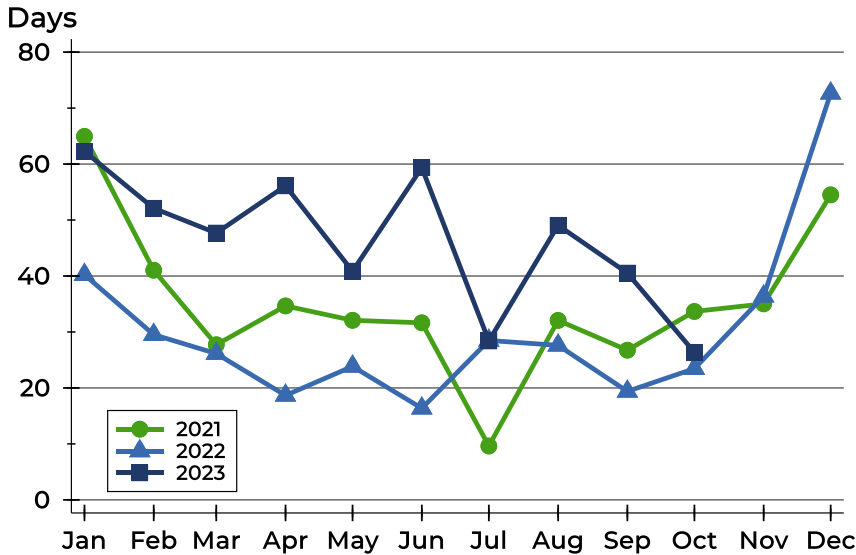


Month	2021	2022	2023
January	266,314	265,500	315,000
February	285,000	320,000	274,400
March	275,000	289,400	325,000
April	250,000	275,000	330,000
May	273,000	330,000	314,875
June	260,000	330,000	349,900
July	255,000	333,000	315,626
August	281,200	337,500	316,806
September	271,500	264,000	339,000
October	288,500	297,500	249,000
November	260,000	310,000	
December	278,500	337,500	



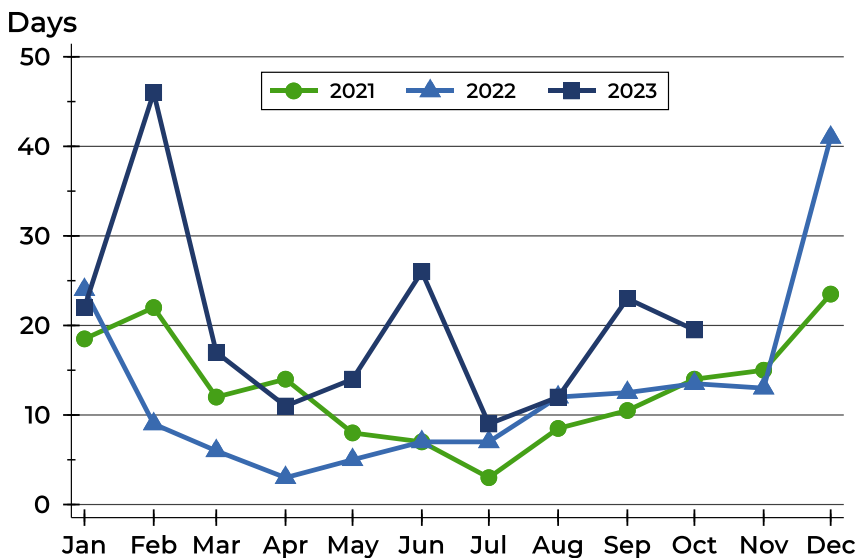
## Pottawatomie County Closed Listings Analysis

### Average DOM



Month	2021	2022	2023
January	65	40	62
February	41	30	52
March	28	26	48
April	35	19	56
May	32	24	41
June	32	16	59
July	10	28	28
August	32	28	49
September	27	19	41
October	34	23	26
November	35	36	
December	55	73	

### Median DOM



Month	2021	2022	2023
January	19	24	22
February	22	9	46
March	12	6	17
April	14	3	11
May	8	5	14
June	7	7	26
July	3	7	9
August	9	12	12
September	11	13	23
October	14	14	20
November	15	13	
December	24	41	



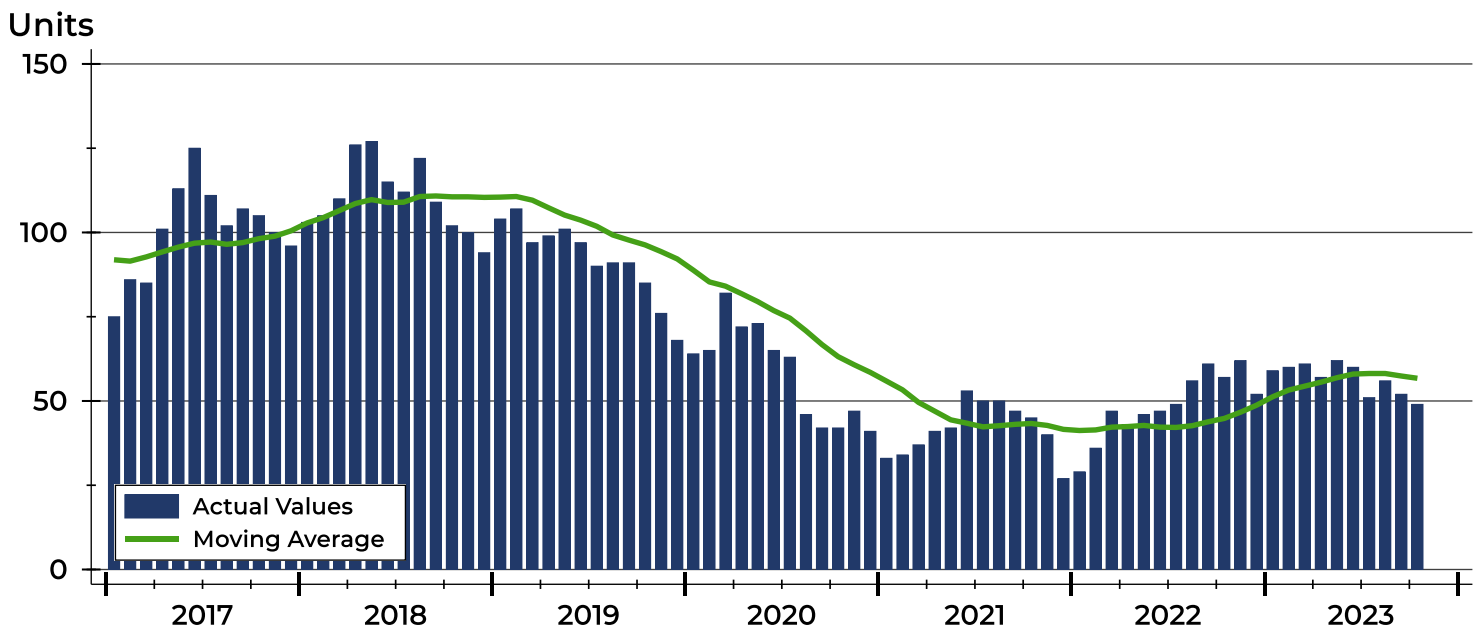
## Pottawatomie County Active Listings Analysis

Summary Statistics for Active Listings		End of October		
		2023	2022	Change
Active Listings		49	57	-14.0%
Volume (1,000s)		17,877	21,543	-17.0%
Months' Supply		2.0	1.9	5.3%
Average	List Price	364,845	377,949	-3.5%
	Days on Market	65	85	-23.5%
	Percent of Original	97.9%	98.4%	-0.5%
Median	List Price	324,900	345,000	-5.8%
	Days on Market	61	62	-1.6%
	Percent of Original	100.0%	100.0%	0.0%

A total of 49 homes were available for sale in Pottawatomie County at the end of October. This represents a 2.0 months' supply of active listings.

The median list price of homes on the market at the end of October was \$324,900, down 5.8% from 2022. The typical time on market for active listings was 61 days, down from 62 days a year earlier.

## History of Active Listings

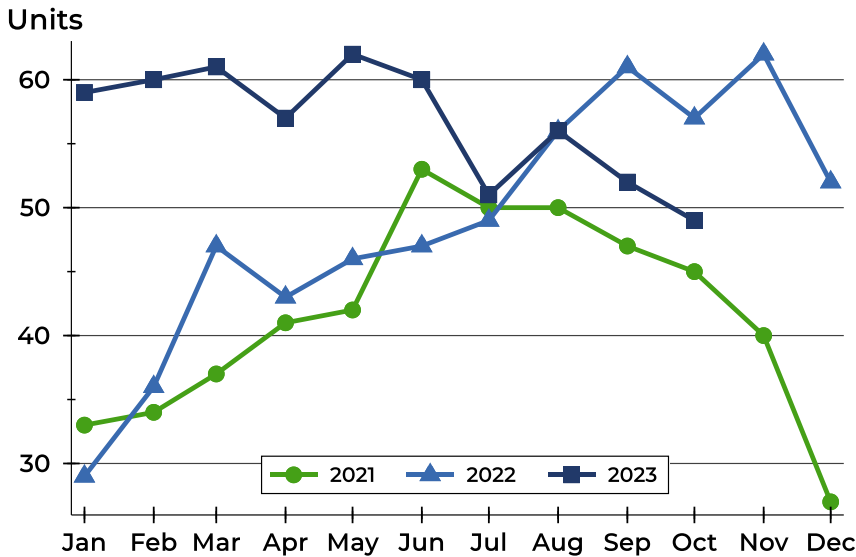






## Pottawatomie County Active Listings Analysis

### Active Listings by Month



Month	2021	2022	2023
January	33	29	59
February	34	36	60
March	37	47	61
April	41	43	57
May	42	46	62
June	53	47	60
July	50	49	51
August	50	56	56
September	47	61	52
October	45	57	49
November	40	62	
December	27	52	

### Active Listings by Price Range

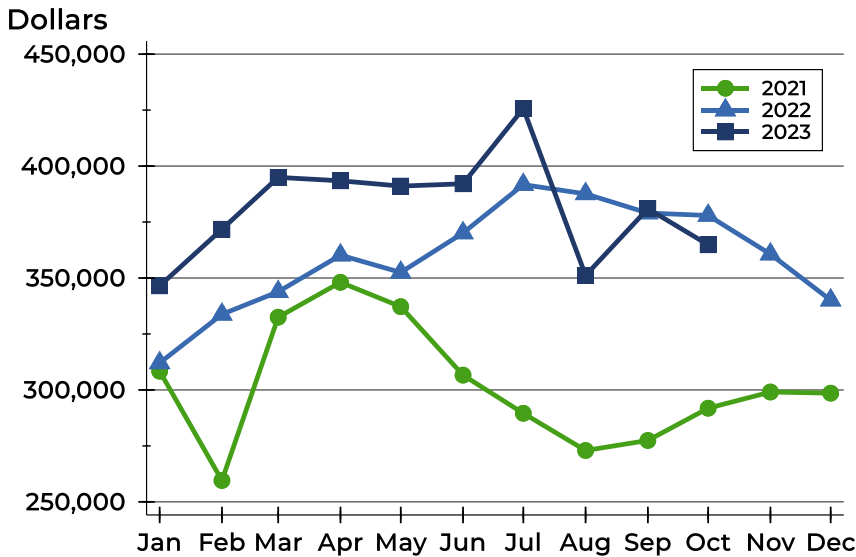
Price Range	Active Listings		Months' Supply	List Price		Days on Market		Price as % of Orig.	
	Number	Percent		Average	Median	Avg.	Med.	Avg.	Med.
Below \$25,000	0	0.0%	N/A	N/A	N/A	N/A	N/A	N/A	N/A
\$25,000-\$49,999	0	0.0%	N/A	N/A	N/A	N/A	N/A	N/A	N/A
\$50,000-\$99,999	0	0.0%	0.0	N/A	N/A	N/A	N/A	N/A	N/A
\$100,000-\$124,999	0	0.0%	0.0	N/A	N/A	N/A	N/A	N/A	N/A
\$125,000-\$149,999	4	8.2%	6.0	135,900	134,450	48	47	95.6%	97.8%
\$150,000-\$174,999	3	6.1%	2.2	169,267	170,000	69	40	100.0%	100.0%
\$175,000-\$199,999	2	4.1%	1.7	184,950	184,950	43	43	95.1%	95.1%
\$200,000-\$249,999	6	12.2%	2.1	230,867	230,850	45	49	98.7%	99.4%
\$250,000-\$299,999	8	16.3%	2.1	279,100	279,950	68	47	99.5%	100.0%
\$300,000-\$399,999	11	22.4%	1.2	348,127	339,900	65	75	99.0%	100.0%
\$400,000-\$499,999	5	10.2%	1.9	429,180	427,000	101	119	95.6%	96.4%
\$500,000-\$749,999	7	14.3%	3.7	583,543	565,000	74	64	97.0%	99.4%
\$750,000-\$999,999	2	4.1%	N/A	814,500	814,500	17	17	100.0%	100.0%
\$1,000,000 and up	1	2.0%	N/A	1,149,000	1,149,000	131	131	91.9%	91.9%





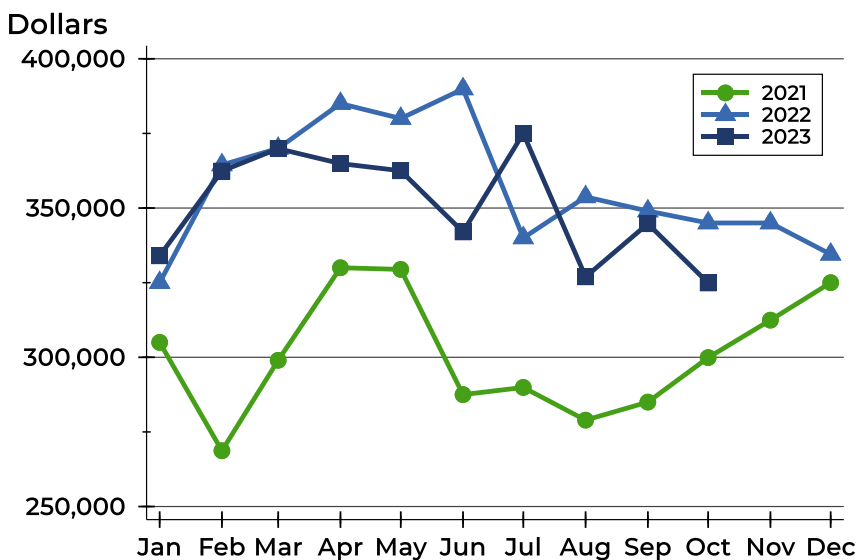
# Pottawatomie County Active Listings Analysis

## Average Price



Month	2021	2022	2023
January	308,385	312,066	346,498
February	259,565	333,767	371,789
March	332,489	343,857	394,956
April	348,095	360,213	393,429
May	337,200	352,492	391,065
June	306,614	370,121	392,093
July	289,574	391,716	425,723
August	272,958	387,600	351,161
September	277,430	379,030	380,967
October	291,840	377,949	364,845
November	299,078	360,668	
December	298,563	340,103	

## Median Price

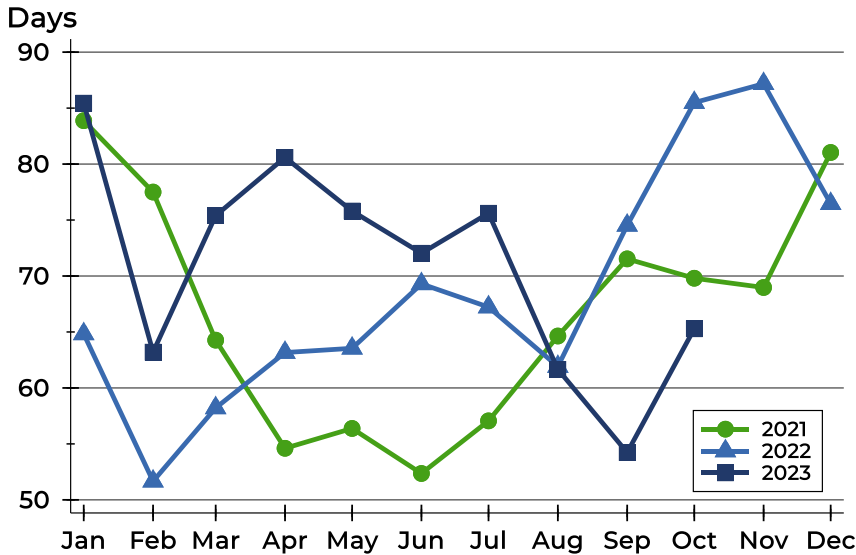


Month	2021	2022	2023
January	305,000	325,000	334,000
February	268,700	364,450	362,400
March	299,000	370,000	369,900
April	330,000	385,000	364,900
May	329,450	380,000	362,500
June	287,500	389,900	342,000
July	289,900	340,000	375,000
August	278,950	353,750	326,950
September	285,000	349,000	344,750
October	299,900	345,000	324,900
November	312,450	345,000	
December	325,000	334,500	



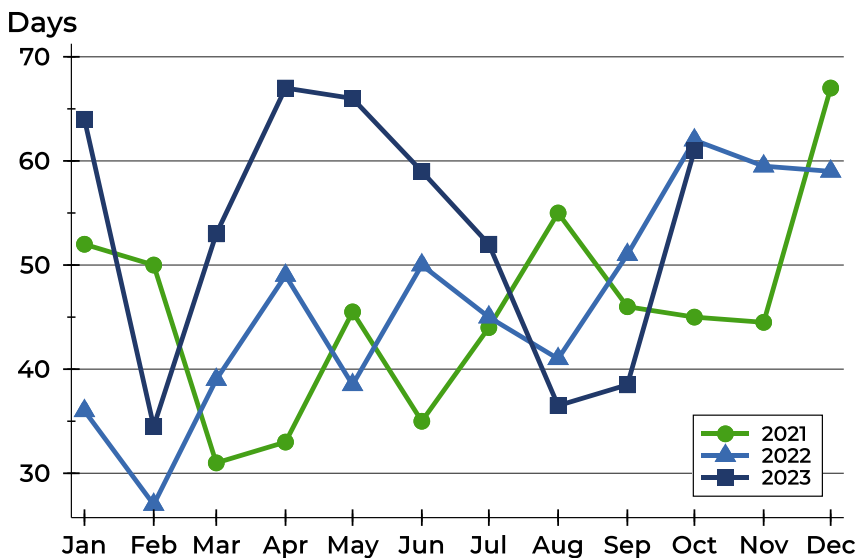
# Pottawatomie County Active Listings Analysis

## Average DOM



Month	2021	2022	2023
January	84	65	85
February	78	52	63
March	64	58	75
April	55	63	81
May	56	64	76
June	52	69	72
July	57	67	76
August	65	62	62
September	72	75	54
October	70	85	65
November	69	87	
December	81	76	

## Median DOM

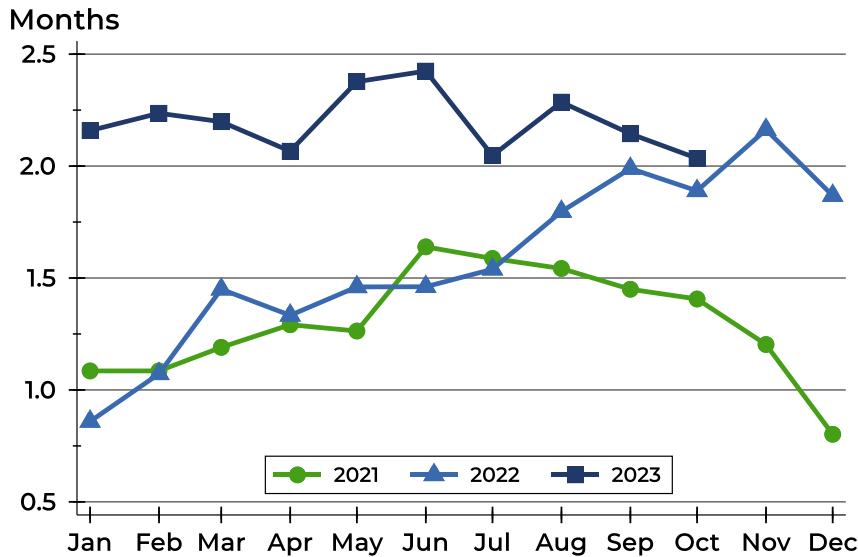


Month	2021	2022	2023
January	52	36	64
February	50	27	35
March	31	39	53
April	33	49	67
May	46	39	66
June	35	50	59
July	44	45	52
August	55	41	37
September	46	51	39
October	45	62	61
November	45	60	
December	67	59	



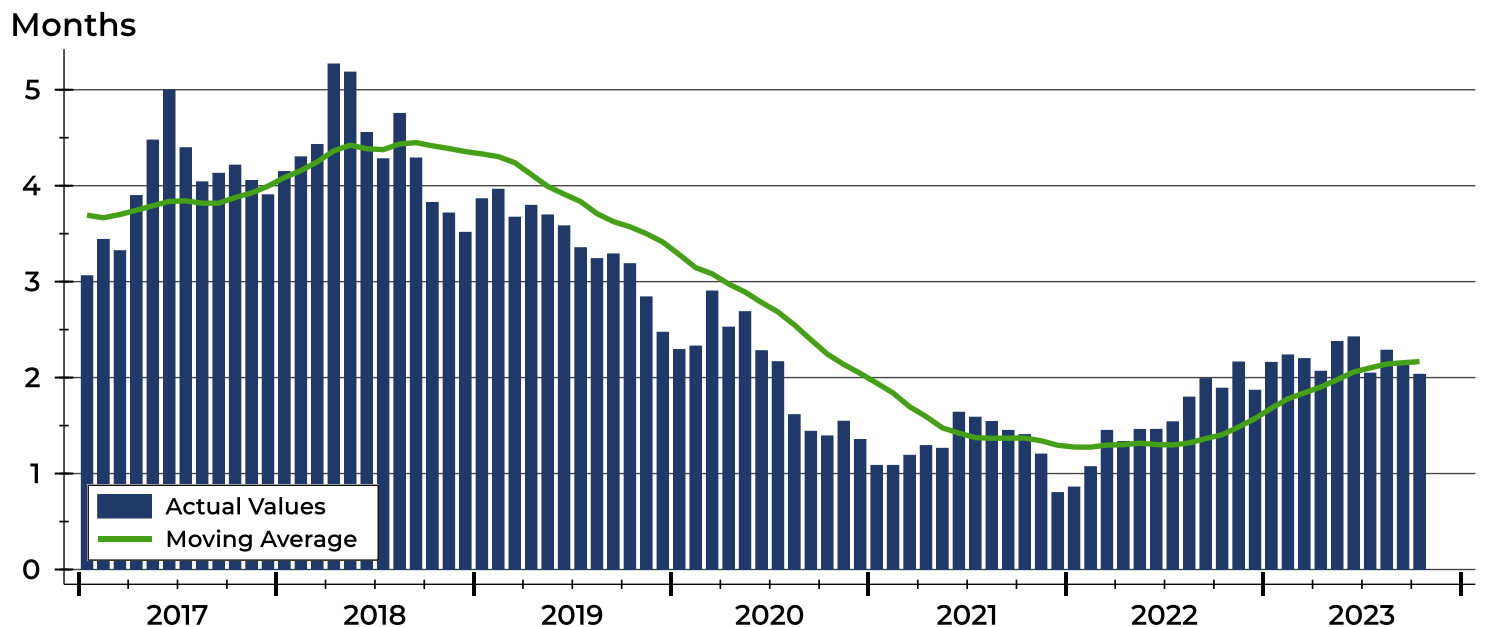
## Pottawatomie County Months' Supply Analysis

### Months' Supply by Month



Month	2021	2022	2023
January	1.1	0.9	2.2
February	1.1	1.1	2.2
March	1.2	1.4	2.2
April	1.3	1.3	2.1
May	1.3	1.5	2.4
June	1.6	1.5	2.4
July	1.6	1.5	2.0
August	1.5	1.8	2.3
September	1.4	2.0	2.1
October	1.4	1.9	2.0
November	1.2	2.2	
December	0.8	1.9	

### History of Month's Supply





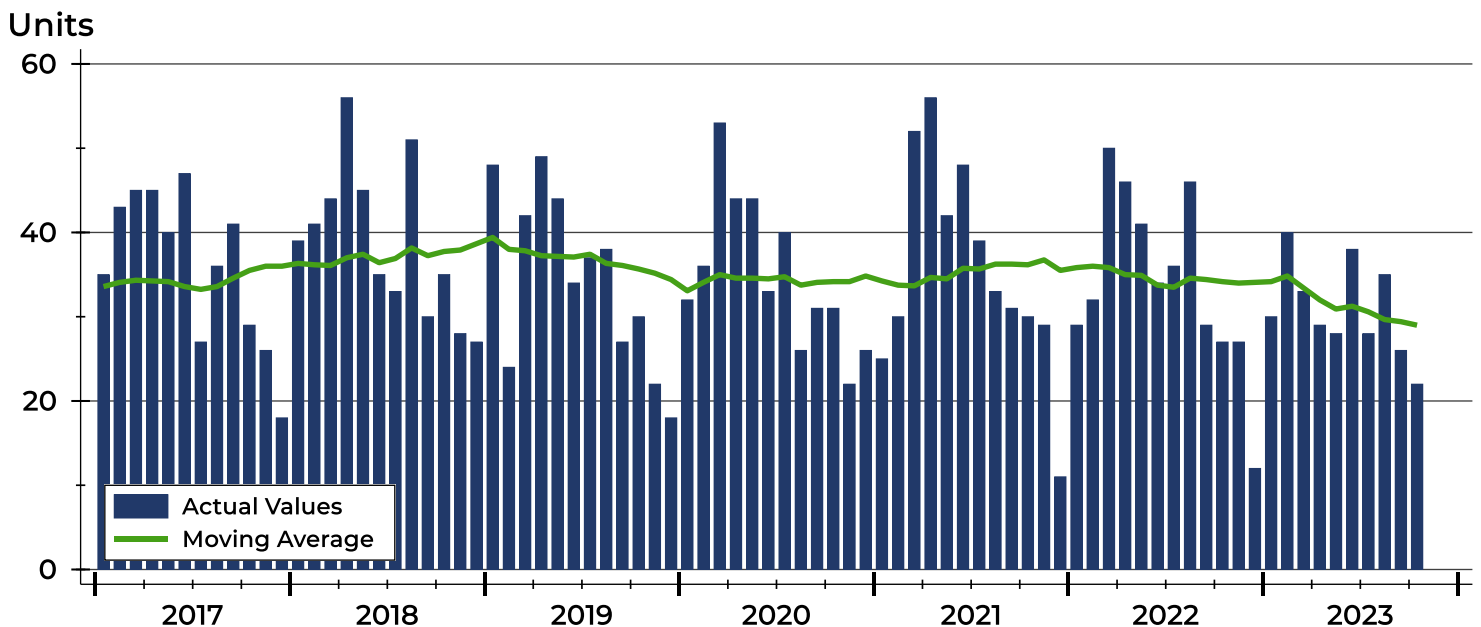
## Pottawatomie County New Listings Analysis

Summary Statistics for New Listings		2023	October 2022	Change
Current Month	New Listings	22	27	-18.5%
	Volume (1,000s)	7,138	8,324	-14.2%
	Average List Price	324,450	308,297	5.2%
	Median List Price	297,450	272,500	9.2%
Year-to-Date	New Listings	309	370	-16.5%
	Volume (1,000s)	107,860	124,545	-13.4%
	Average List Price	349,063	336,608	3.7%
	Median List Price	335,000	329,950	1.5%

A total of 22 new listings were added in Pottawatomie County during October, down 18.5% from the same month in 2022. Year-to-date Pottawatomie County has seen 309 new listings.

The median list price of these homes was \$297,450 up from \$272,500 in 2022.

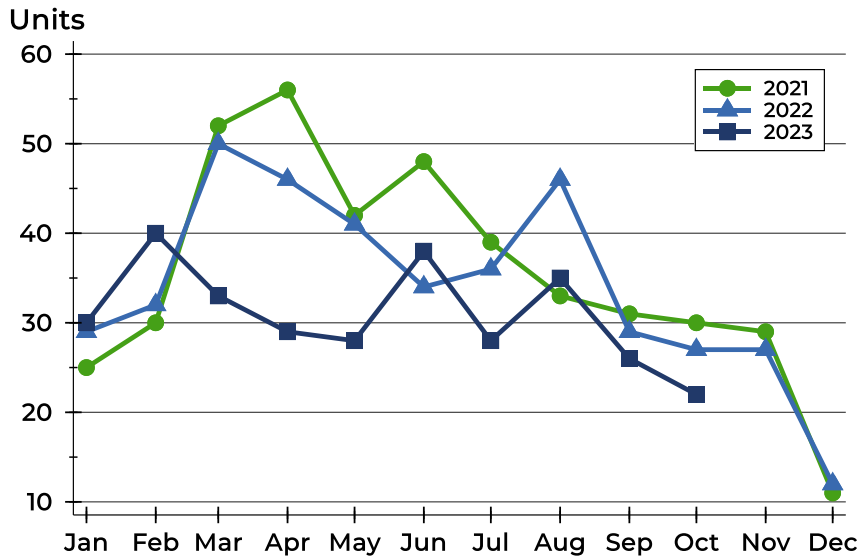
## History of New Listings





## Pottawatomie County New Listings Analysis

### New Listings by Month



Month	2021	2022	2023
January	25	29	30
February	30	32	40
March	52	50	33
April	56	46	29
May	42	41	28
June	48	34	38
July	39	36	28
August	33	46	35
September	31	29	26
October	30	27	22
November	29	27	
December	11	12	

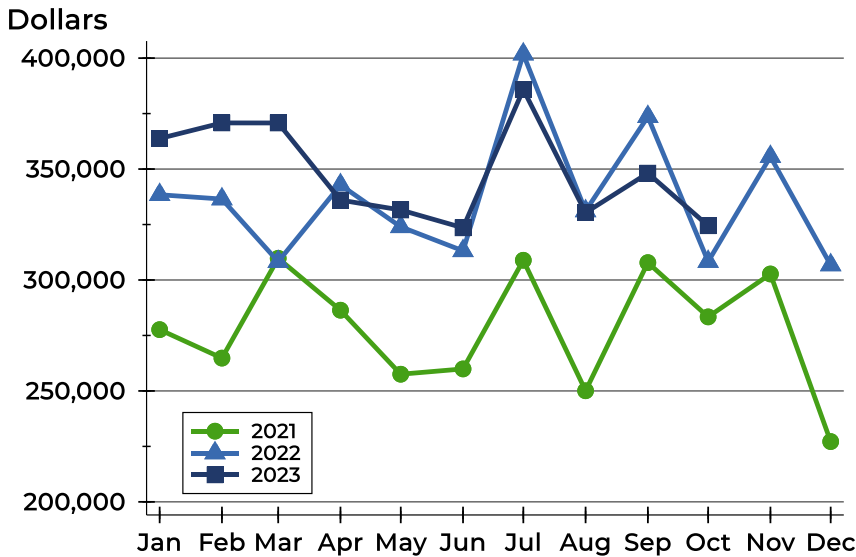
### New Listings by Price Range

Price Range	New Listings		List Price		Days on Market		Price as % of Orig.	
	Number	Percent	Average	Median	Avg.	Med.	Avg.	Med.
Below \$25,000	0	0.0%	N/A	N/A	N/A	N/A	N/A	N/A
\$25,000-\$49,999	0	0.0%	N/A	N/A	N/A	N/A	N/A	N/A
\$50,000-\$99,999	1	4.5%	95,000	95,000	5	5	94.7%	94.7%
\$100,000-\$124,999	0	0.0%	N/A	N/A	N/A	N/A	N/A	N/A
\$125,000-\$149,999	2	9.1%	149,099	149,099	18	18	100.0%	100.0%
\$150,000-\$174,999	0	0.0%	N/A	N/A	N/A	N/A	N/A	N/A
\$175,000-\$199,999	2	9.1%	187,000	187,000	8	8	99.1%	99.1%
\$200,000-\$249,999	2	9.1%	233,000	233,000	30	30	98.0%	98.0%
\$250,000-\$299,999	5	22.7%	287,580	295,000	17	13	100.0%	100.0%
\$300,000-\$399,999	6	27.3%	336,633	332,450	11	14	100.0%	100.0%
\$400,000-\$499,999	2	9.1%	409,000	409,000	29	29	95.3%	95.3%
\$500,000-\$749,999	0	0.0%	N/A	N/A	N/A	N/A	N/A	N/A
\$750,000-\$999,999	2	9.1%	814,500	814,500	25	25	100.0%	100.0%
\$1,000,000 and up	0	0.0%	N/A	N/A	N/A	N/A	N/A	N/A



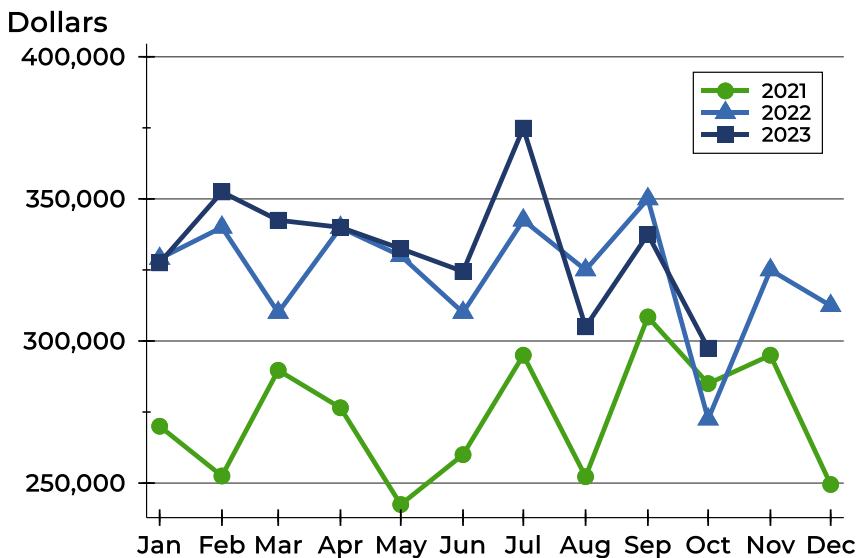
## Pottawatomie County New Listings Analysis

### Average Price



Month	2021	2022	2023
January	277,640	338,438	363,783
February	264,803	336,485	370,801
March	309,779	308,271	370,785
April	286,386	342,847	336,028
May	257,544	323,966	331,554
June	259,931	313,151	323,523
July	308,895	401,797	385,857
August	250,072	331,116	330,357
September	307,825	373,607	348,169
October	283,383	308,297	324,450
November	302,724	355,596	
December	227,186	306,771	

### Median Price



Month	2021	2022	2023
January	270,000	329,000	327,500
February	252,500	340,000	352,450
March	289,700	310,000	342,500
April	276,500	339,900	340,000
May	242,450	330,000	332,500
June	260,000	310,000	324,450
July	295,000	342,500	374,900
August	252,250	325,000	305,000
September	308,450	350,000	337,500
October	285,000	272,500	297,450
November	295,000	325,000	
December	249,500	312,425	



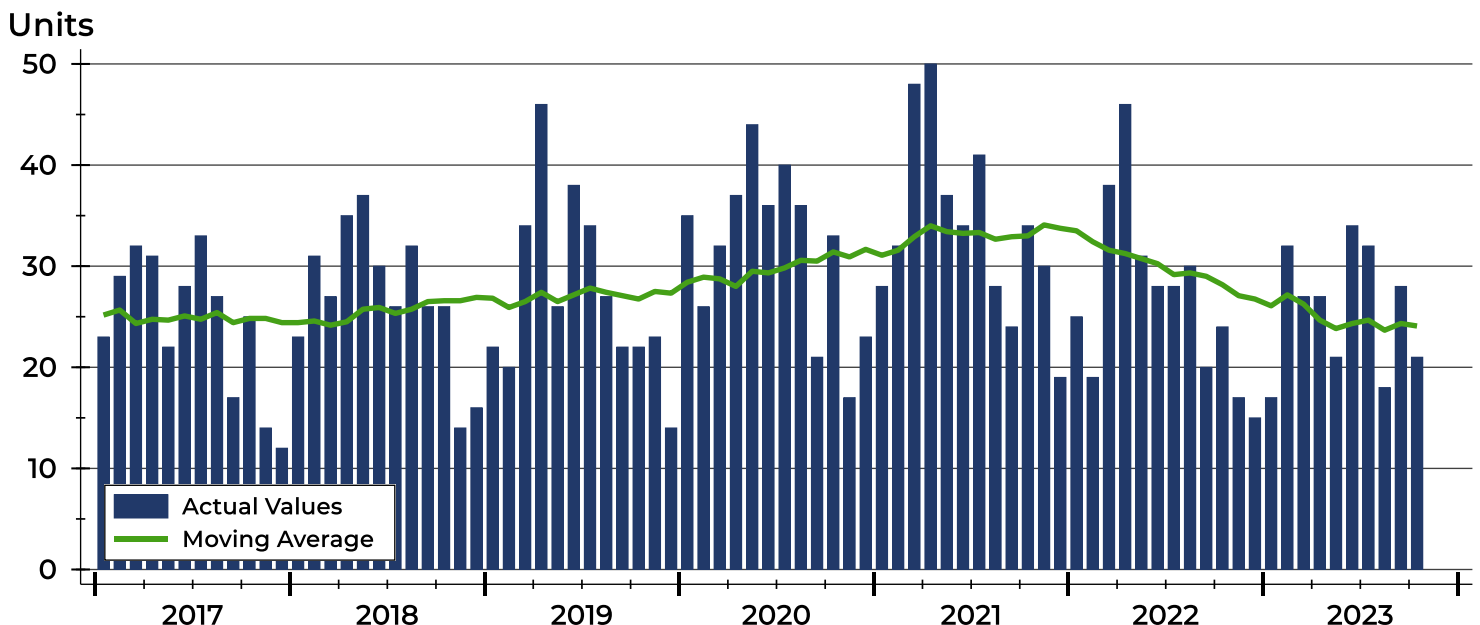
## Pottawatomie County Contracts Written Analysis

Summary Statistics for Contracts Written		2023	October 2022	Change	2023	Year-to-Date 2022	Change
Contracts Written		21	24	-12.5%	257	289	-11.1%
Volume (1,000s)		7,304	7,566	-3.5%	83,170	90,902	-8.5%
Average	Sale Price	347,819	315,234	10.3%	323,617	314,539	2.9%
	Days on Market	40	31	29.0%	45	25	80.0%
	Percent of Original	97.0%	96.7%	0.3%	97.3%	99.5%	-2.2%
Median	Sale Price	324,900	329,950	-1.5%	330,000	315,000	4.8%
	Days on Market	31	6	416.7%	18	7	157.1%
	Percent of Original	98.5%	100.0%	-1.5%	99.1%	100.0%	-0.9%

A total of 21 contracts for sale were written in Pottawatomie County during the month of October, down from 24 in 2022. The median list price of these homes was \$324,900, down from \$329,950 the prior year.

Half of the homes that went under contract in October were on the market less than 31 days, compared to 6 days in October 2022.

## History of Contracts Written

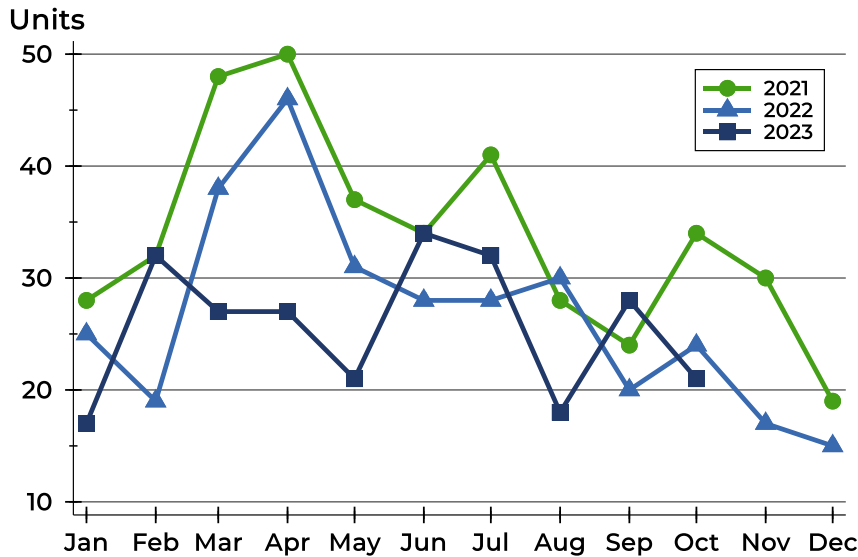






## Pottawatomie County Contracts Written Analysis

### Contracts Written by Month



Month	2021	2022	2023
January	28	25	17
February	32	19	32
March	48	38	27
April	50	46	27
May	37	31	21
June	34	28	34
July	41	28	32
August	28	30	18
September	24	20	28
October	34	24	21
November	30	17	
December	19	15	

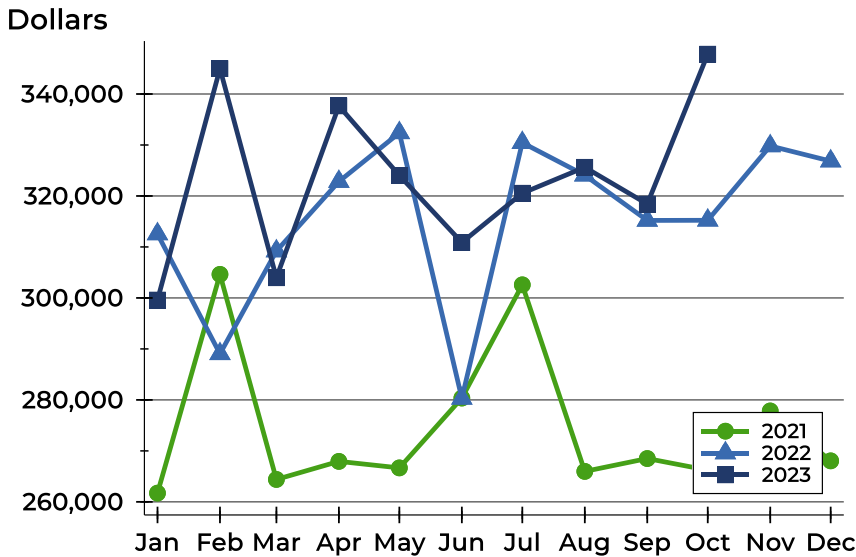
### Contracts Written by Price Range

Price Range	Contracts Written		List Price		Days on Market		Price as % of Orig.	
	Number	Percent	Average	Median	Avg.	Med.	Avg.	Med.
Below \$25,000	0	0.0%	N/A	N/A	N/A	N/A	N/A	N/A
\$25,000-\$49,999	0	0.0%	N/A	N/A	N/A	N/A	N/A	N/A
\$50,000-\$99,999	1	4.8%	95,000	95,000	5	5	94.7%	94.7%
\$100,000-\$124,999	0	0.0%	N/A	N/A	N/A	N/A	N/A	N/A
\$125,000-\$149,999	0	0.0%	N/A	N/A	N/A	N/A	N/A	N/A
\$150,000-\$174,999	0	0.0%	N/A	N/A	N/A	N/A	N/A	N/A
\$175,000-\$199,999	1	4.8%	189,000	189,000	1	1	98.1%	98.1%
\$200,000-\$249,999	2	9.5%	224,000	224,000	33	33	100.0%	100.0%
\$250,000-\$299,999	5	23.8%	295,940	295,000	27	16	96.7%	100.0%
\$300,000-\$399,999	8	38.1%	357,325	354,500	56	48	97.7%	99.1%
\$400,000-\$499,999	1	4.8%	409,000	409,000	19	19	95.3%	95.3%
\$500,000-\$749,999	3	14.3%	608,300	610,000	58	60	94.7%	98.5%
\$750,000-\$999,999	0	0.0%	N/A	N/A	N/A	N/A	N/A	N/A
\$1,000,000 and up	0	0.0%	N/A	N/A	N/A	N/A	N/A	N/A



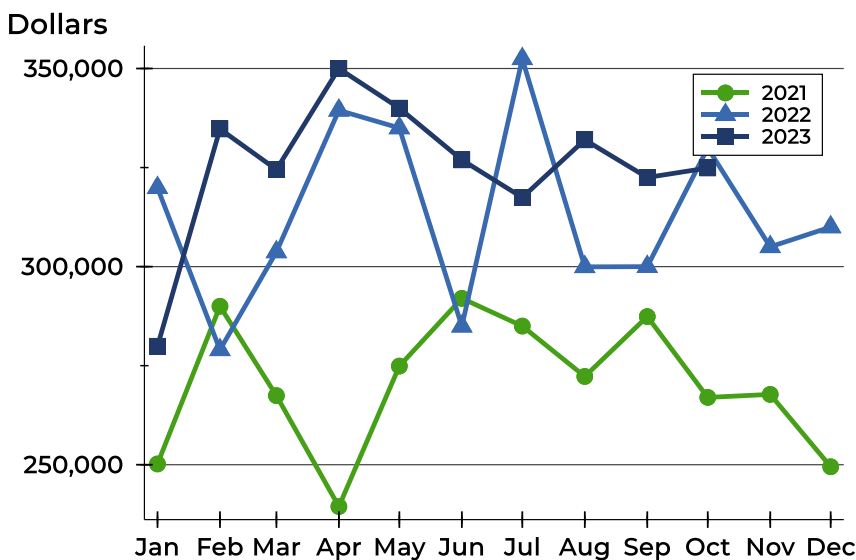
# Pottawatomie County Contracts Written Analysis

## Average Price



Month	2021	2022	2023
January	261,718	312,546	299,594
February	304,628	289,037	344,978
March	264,400	309,196	303,959
April	267,945	322,826	337,663
May	266,667	332,385	324,033
June	280,366	280,298	310,883
July	302,572	330,457	320,544
August	265,977	324,068	325,628
September	268,499	315,205	318,421
October	266,221	315,234	347,819
November	277,837	329,815	
December	268,045	326,840	

## Median Price

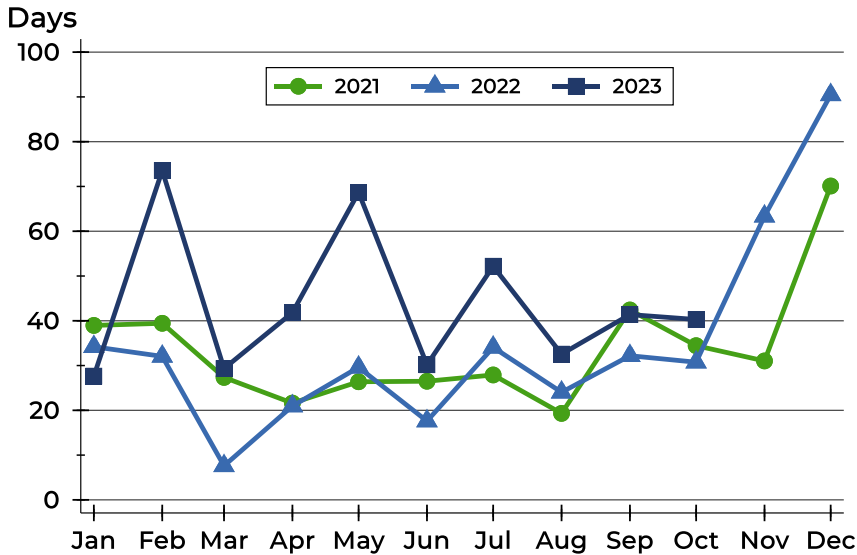


Month	2021	2022	2023
January	250,200	319,900	279,900
February	290,000	279,000	334,750
March	267,450	303,700	324,500
April	239,450	339,450	350,000
May	274,900	335,000	340,000
June	292,000	284,950	326,950
July	285,000	352,450	317,450
August	272,280	299,950	332,000
September	287,400	300,000	322,500
October	267,000	329,950	324,900
November	267,750	305,000	
December	249,500	310,000	



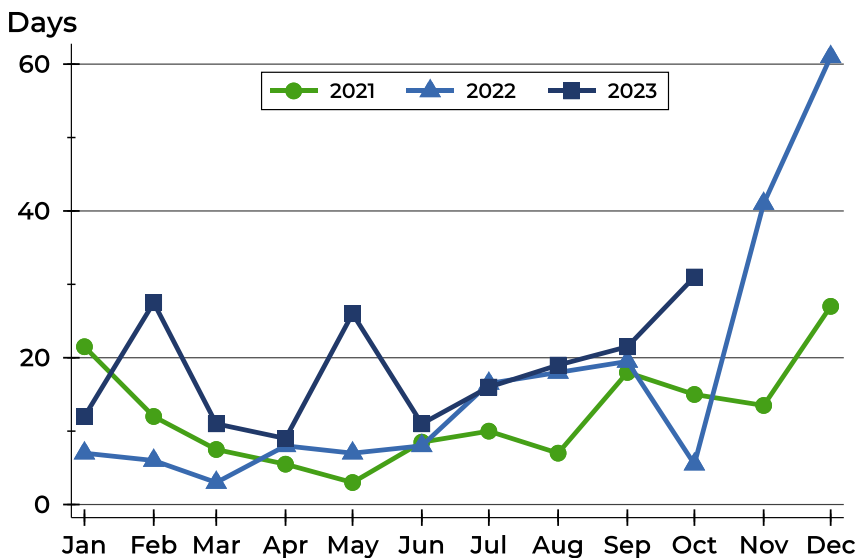
## Pottawatomie County Contracts Written Analysis

### Average DOM



Month	2021	2022	2023
January	39	34	28
February	39	32	74
March	27	8	29
April	22	21	42
May	26	30	69
June	27	18	30
July	28	34	52
August	19	24	33
September	42	32	41
October	34	31	40
November	31	63	
December	70	90	

### Median DOM



Month	2021	2022	2023
January	22	7	12
February	12	6	28
March	8	3	11
April	6	8	9
May	3	7	26
June	9	8	11
July	10	17	16
August	7	18	19
September	18	20	22
October	15	6	31
November	14	41	
December	27	61	



## Pottawatomie County Pending Contracts Analysis

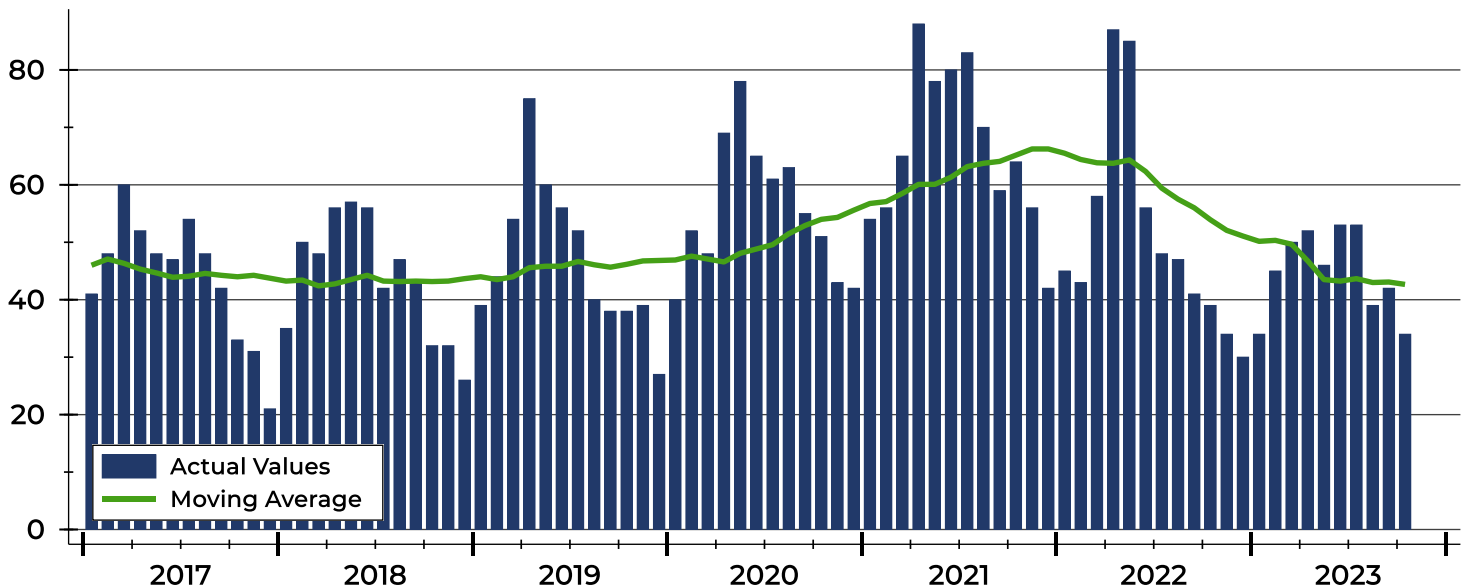
Summary Statistics for Pending Contracts		End of October		
		2023	2022	Change
Pending Contracts		34	39	-12.8%
Volume (1,000s)		11,972	11,660	2.7%
Average	List Price	352,121	298,977	17.8%
	Days on Market	38	32	18.8%
	Percent of Original	99.5%	99.1%	0.4%
Median	List Price	327,000	295,000	10.8%
	Days on Market	31	16	93.8%
	Percent of Original	100.0%	100.0%	0.0%

A total of 34 listings in Pottawatomie County had contracts pending at the end of October, down from 39 contracts pending at the end of October 2022.

Pending contracts reflect listings with a contract in place at the end of the month. In contrast, contracts written measures the number of listings put under contract during the month.

## History of Pending Contracts

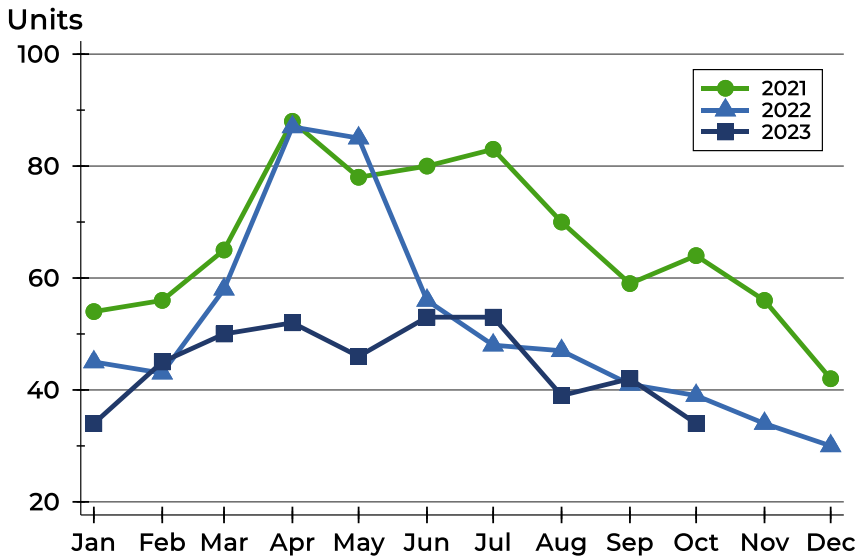
Units





## Pottawatomie County Pending Contracts Analysis

### Pending Contracts by Month



Month	2021	2022	2023
January	54	45	34
February	56	43	45
March	65	58	50
April	88	87	52
May	78	85	46
June	80	56	53
July	83	48	53
August	70	47	39
September	59	41	42
October	64	39	34
November	56	34	
December	42	30	

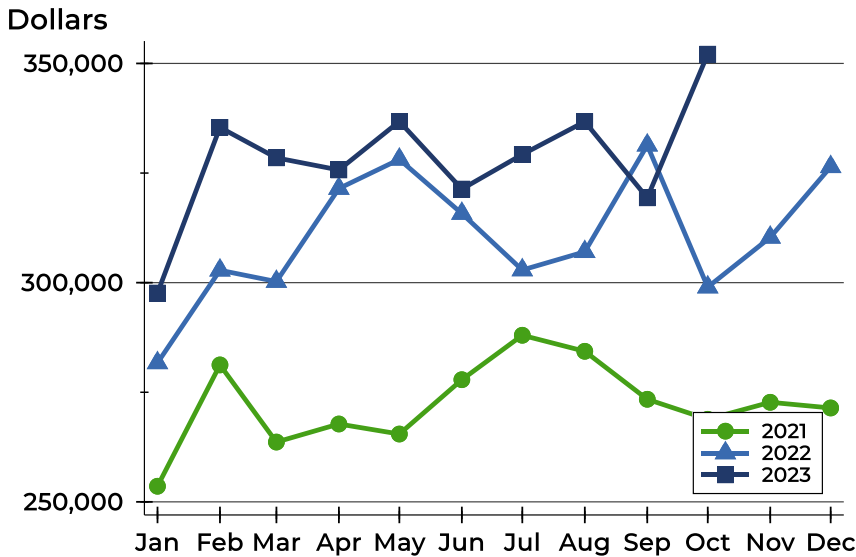
### Pending Contracts by Price Range

Price Range	Pending Contracts		List Price		Days on Market		Price as % of Orig.	
	Number	Percent	Average	Median	Avg.	Med.	Avg.	Med.
Below \$25,000	0	0.0%	N/A	N/A	N/A	N/A	N/A	N/A
\$25,000-\$49,999	0	0.0%	N/A	N/A	N/A	N/A	N/A	N/A
\$50,000-\$99,999	1	2.9%	89,500	89,500	106	106	100.0%	100.0%
\$100,000-\$124,999	0	0.0%	N/A	N/A	N/A	N/A	N/A	N/A
\$125,000-\$149,999	1	2.9%	129,000	129,000	7	7	100.0%	100.0%
\$150,000-\$174,999	0	0.0%	N/A	N/A	N/A	N/A	N/A	N/A
\$175,000-\$199,999	0	0.0%	N/A	N/A	N/A	N/A	N/A	N/A
\$200,000-\$249,999	5	14.7%	223,860	229,500	22	31	100.0%	100.0%
\$250,000-\$299,999	7	20.6%	286,257	289,900	26	16	103.4%	100.0%
\$300,000-\$399,999	11	32.4%	358,791	369,000	37	44	98.3%	100.0%
\$400,000-\$499,999	5	14.7%	441,780	419,900	54	19	99.1%	100.0%
\$500,000-\$749,999	4	11.8%	618,725	612,500	48	57	96.0%	99.2%
\$750,000-\$999,999	0	0.0%	N/A	N/A	N/A	N/A	N/A	N/A
\$1,000,000 and up	0	0.0%	N/A	N/A	N/A	N/A	N/A	N/A



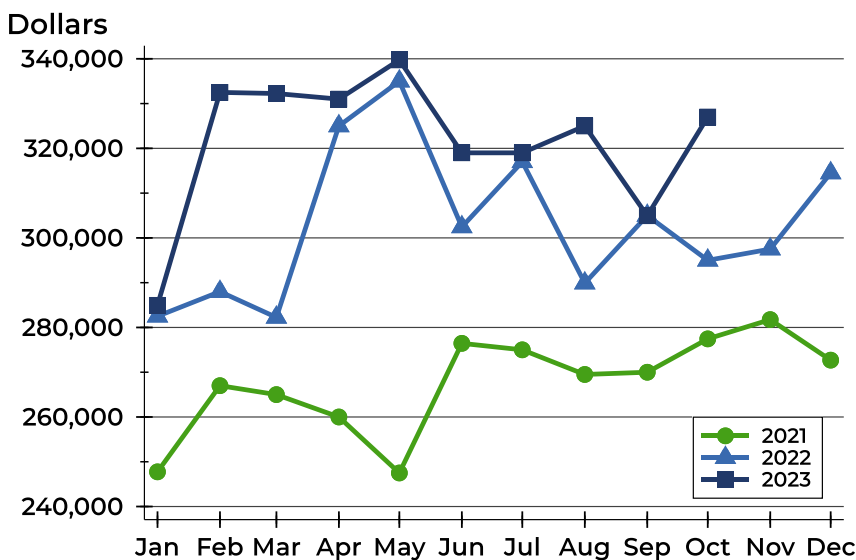
## Pottawatomie County Pending Contracts Analysis

### Average Price



Month	2021	2022	2023
January	253,565	281,700	297,634
February	281,241	302,832	335,418
March	263,641	300,248	328,472
April	267,766	321,471	325,708
May	265,473	328,125	336,778
June	277,862	315,771	321,353
July	288,006	302,886	329,236
August	284,350	307,048	336,728
September	273,403	331,346	319,350
October	268,839	298,977	352,121
November	272,718	310,334	
December	271,423	326,423	

### Median Price

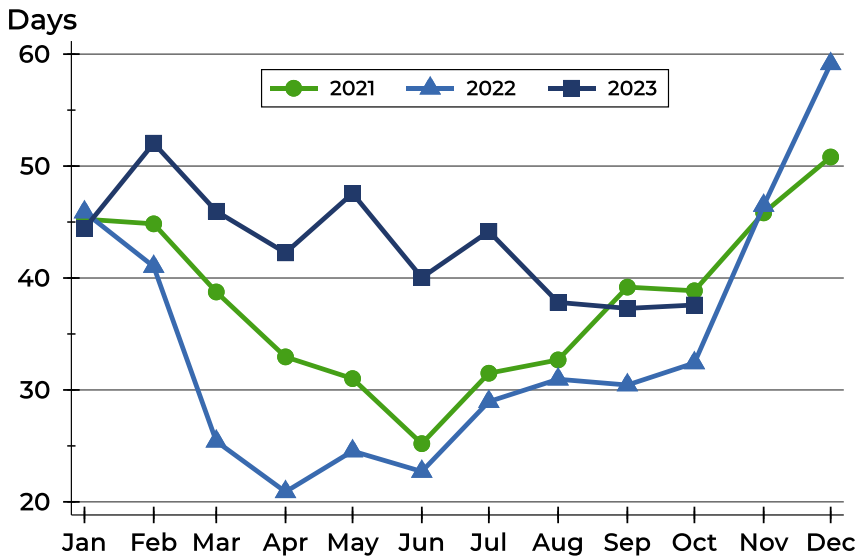


Month	2021	2022	2023
January	247,750	282,500	284,950
February	267,000	288,000	332,500
March	265,000	282,250	332,250
April	260,000	325,000	331,000
May	247,500	335,000	339,750
June	276,450	302,450	319,000
July	275,000	317,000	319,000
August	269,500	289,900	325,000
September	270,000	305,000	304,950
October	277,450	295,000	327,000
November	281,750	297,500	
December	272,700	314,500	



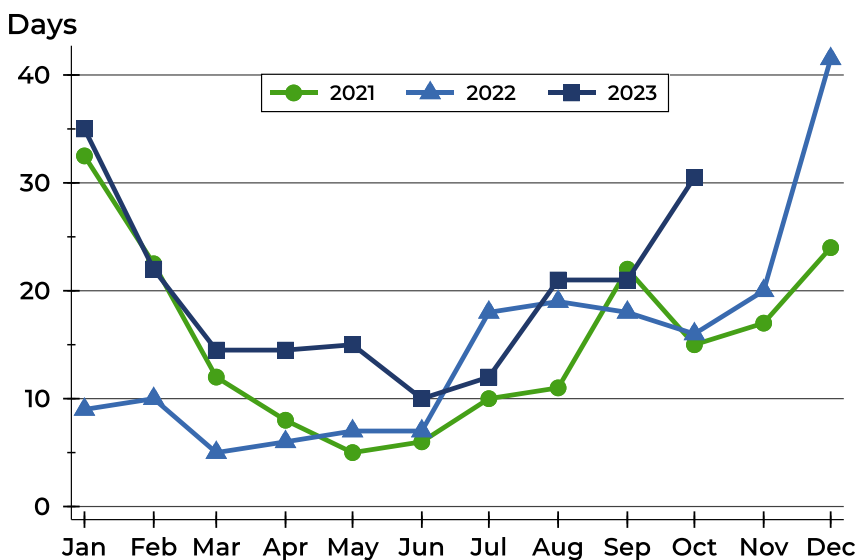
## Pottawatomie County Pending Contracts Analysis

### Average DOM



Month	2021	2022	2023
January	45	46	44
February	45	41	52
March	39	25	46
April	33	21	42
May	31	25	48
June	25	23	40
July	31	29	44
August	33	31	38
September	39	30	37
October	39	32	38
November	46	46	
December	51	59	

### Median DOM



Month	2021	2022	2023
January	33	9	35
February	23	10	22
March	12	5	15
April	8	6	15
May	5	7	15
June	6	7	10
July	10	18	12
August	11	19	21
September	22	18	21
October	15	16	31
November	17	20	
December	24	42	