



**March
2023**

Flint Hills MLS Statistics



**FLINT HILLS
ASSOCIATION
OF REALTORS®**

Pottawatomie County Housing Report



Market Overview

Pottawatomie County Home Sales Rose in March

Total home sales in Pottawatomie County rose by 50.0% last month to 21 units, compared to 14 units in March 2022. Total sales volume was \$6.7 million, up 73.5% from a year earlier.

The median sale price in March was \$300,000, up from \$289,400 a year earlier. Homes that sold in March were typically on the market for 15 days and sold for 100.0% of their list prices.

Pottawatomie County Active Listings Up at End of March

The total number of active listings in Pottawatomie County at the end of March was 61 units, up from 47 at the same point in 2022. This represents a 2.2 months' supply of homes available for sale. The median list price of homes on the market at the end of March was \$369,900.

During March, a total of 26 contracts were written down from 38 in March 2022. At the end of the month, there were 49 contracts still pending.

Report Contents

- Summary Statistics – Page 2
- Closed Listing Analysis – Page 3
- Active Listings Analysis – Page 7
- Months' Supply Analysis – Page 11
- New Listings Analysis – Page 12
- Contracts Written Analysis – Page 15
- Pending Contracts Analysis – Page 19

Contact Information

Margaret Pendleton, Association Executive
 Flint Hills Association of REALTORS®
 205 S. Seth Child Road
 Manhattan, KS 66502
 785-776-1203
ae@flinthillsrealtors.net
www.flinthillsrealtors.net



**March
2023**

Flint Hills MLS Statistics



**FLINT HILLS
ASSOCIATION
OF REALTORS®**

Pottawatomie County Summary Statistics

March MLS Statistics Three-year History		Current Month			Year-to-Date		
		2023	2022	2021	2023	2022	2021
Home Sales		21	14	28	55	60	75
Change from prior year		50.0%	-50.0%	-9.7%	-8.3%	-20.0%	15.4%
Active Listings		61	47	37	N/A	N/A	N/A
Change from prior year		29.8%	27.0%	-54.9%			
Months' Supply		2.2	1.4	1.2	N/A	N/A	N/A
Change from prior year		57.1%	16.7%	-58.6%			
New Listings		30	50	52	99	111	107
Change from prior year		-40.0%	-3.8%	-1.9%	-10.8%	3.7%	-11.6%
Contracts Written		26	38	48	75	82	108
Change from prior year		-31.6%	-20.8%	50.0%	-8.5%	-24.1%	16.1%
Pending Contracts		49	58	65	N/A	N/A	N/A
Change from prior year		-15.5%	-10.8%	35.4%			
Sales Volume (1,000s)		6,682	3,852	7,897	17,342	17,468	20,361
Change from prior year		73.5%	-51.2%	3.1%	-0.7%	-14.2%	25.0%
Average	Sale Price	318,196	275,167	282,018	315,302	291,137	271,480
	Change from prior year	15.6%	-2.4%	14.2%	8.3%	7.2%	8.3%
	List Price of Actives	394,956	343,857	332,489	N/A	N/A	N/A
	Change from prior year	14.9%	3.4%	28.9%			
	Days on Market	38	26	28	49	32	42
Change from prior year	46.2%	-7.1%	-68.2%	53.1%	-23.8%	-50.0%	
Percent of List	101.1%	102.6%	99.7%	99.4%	100.9%	98.5%	
Change from prior year	-1.5%	2.9%	1.5%	-1.5%	2.4%	-0.7%	
Percent of Original	100.6%	102.1%	99.3%	97.4%	100.0%	97.5%	
Change from prior year	-1.5%	2.8%	5.3%	-2.6%	2.6%	0.6%	
Median	Sale Price	300,000	289,400	275,000	300,000	293,400	275,000
	Change from prior year	3.7%	5.2%	18.8%	2.2%	6.7%	11.1%
	List Price of Actives	369,900	370,000	299,000	N/A	N/A	N/A
	Change from prior year	0.0%	23.7%	25.1%			
	Days on Market	15	6	12	22	12	16
Change from prior year	150.0%	-50.0%	-55.6%	83.3%	-25.0%	-42.9%	
Percent of List	100.0%	102.3%	100.0%	99.5%	100.0%	100.0%	
Change from prior year	-2.2%	2.3%	0.5%	-0.5%	0.0%	0.4%	
Percent of Original	100.0%	102.3%	100.0%	98.0%	100.0%	100.0%	
Change from prior year	-2.2%	2.3%	2.5%	-2.0%	0.0%	1.4%	

Note: Year-to-date statistics cannot be calculated for Active Listings, Months' Supply and Pending Contracts.



Pottawatomie County Closed Listings Analysis

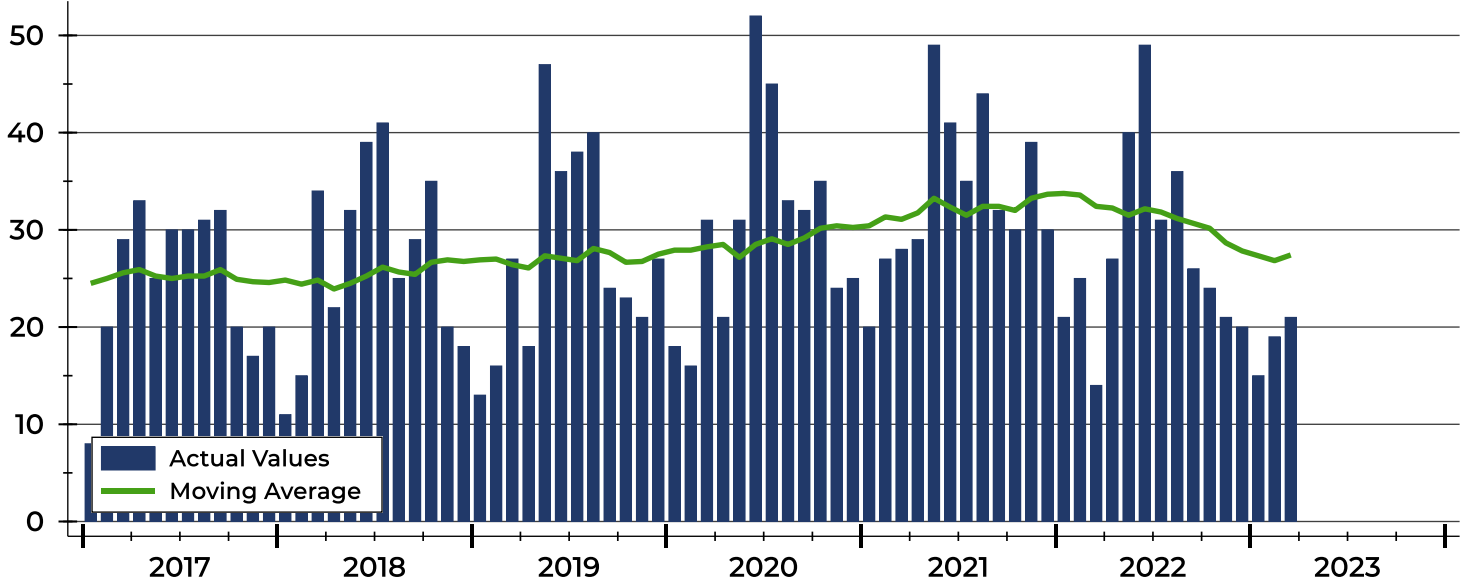
Summary Statistics for Closed Listings		2023	March 2022	Change	2023	Year-to-Date 2022	Change
Closed Listings		21	14	50.0%	55	60	-8.3%
Volume (1,000s)		6,682	3,852	73.5%	17,342	17,468	-0.7%
Months' Supply		2.2	1.4	57.1%	N/A	N/A	N/A
Average	Sale Price	318,196	275,167	15.6%	315,302	291,137	8.3%
	Days on Market	38	26	46.2%	49	32	53.1%
	Percent of List	101.1%	102.6%	-1.5%	99.4%	100.9%	-1.5%
	Percent of Original	100.6%	102.1%	-1.5%	97.4%	100.0%	-2.6%
Median	Sale Price	300,000	289,400	3.7%	300,000	293,400	2.2%
	Days on Market	15	6	150.0%	22	12	83.3%
	Percent of List	100.0%	102.3%	-2.2%	99.5%	100.0%	-0.5%
	Percent of Original	100.0%	102.3%	-2.2%	98.0%	100.0%	-2.0%

A total of 21 homes sold in Pottawatomie County in March, up from 14 units in March 2022. Total sales volume rose to \$6.7 million compared to \$3.9 million in the previous year.

The median sales price in March was \$300,000, up 3.7% compared to the prior year. Median days on market was 15 days, down from 46 days in February, but up from 6 in March 2022.

History of Closed Listings

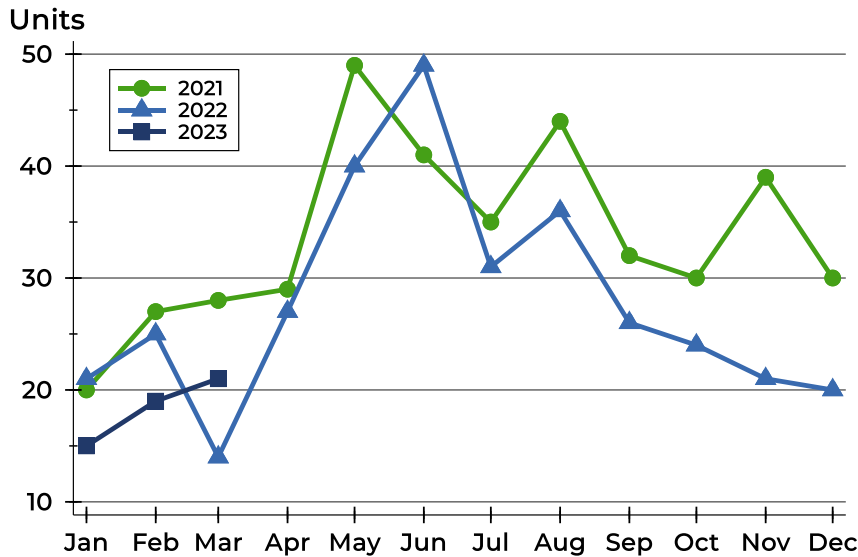
Units





Pottawatomie County Closed Listings Analysis

Closed Listings by Month



Month	2021	2022	2023
January	20	21	15
February	27	25	19
March	28	14	21
April	29	27	
May	49	40	
June	41	49	
July	35	31	
August	44	36	
September	32	26	
October	30	24	
November	39	21	
December	30	20	

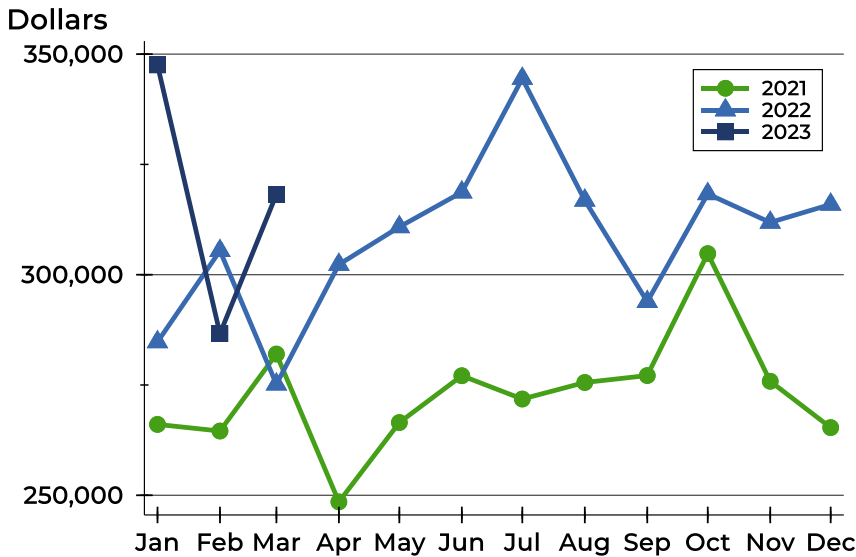
Closed Listings by Price Range

Price Range	Sales		Months' Supply	Sale Price		Days on Market		Price as % of List		Price as % of Orig.	
	Number	Percent		Average	Median	Avg.	Med.	Avg.	Med.	Avg.	Med.
Below \$25,000	0	0.0%	N/A	N/A	N/A	N/A	N/A	N/A	N/A	N/A	N/A
\$25,000-\$49,999	0	0.0%	N/A	N/A	N/A	N/A	N/A	N/A	N/A	N/A	N/A
\$50,000-\$99,999	0	0.0%	0.0	N/A	N/A	N/A	N/A	N/A	N/A	N/A	N/A
\$100,000-\$124,999	0	0.0%	N/A	N/A	N/A	N/A	N/A	N/A	N/A	N/A	N/A
\$125,000-\$149,999	1	4.8%	2.7	135,000	135,000	108	108	93.1%	93.1%	93.1%	93.1%
\$150,000-\$174,999	1	4.8%	2.2	150,000	150,000	112	112	150.2%	150.2%	150.2%	150.2%
\$175,000-\$199,999	0	0.0%	N/A	N/A	N/A	N/A	N/A	N/A	N/A	N/A	N/A
\$200,000-\$249,999	5	23.8%	0.9	225,100	225,000	7	2	97.9%	100.0%	97.9%	100.0%
\$250,000-\$299,999	3	14.3%	1.8	283,933	292,000	25	25	98.2%	100.0%	97.7%	100.0%
\$300,000-\$399,999	6	28.6%	2.2	347,483	353,750	12	13	97.8%	97.3%	97.4%	96.9%
\$400,000-\$499,999	3	14.3%	2.2	412,800	415,500	76	78	103.1%	99.5%	100.9%	98.3%
\$500,000-\$749,999	2	9.5%	9.2	548,256	548,256	84	84	99.7%	99.7%	99.7%	99.7%
\$750,000-\$999,999	0	0.0%	N/A	N/A	N/A	N/A	N/A	N/A	N/A	N/A	N/A
\$1,000,000 and up	0	0.0%	N/A	N/A	N/A	N/A	N/A	N/A	N/A	N/A	N/A



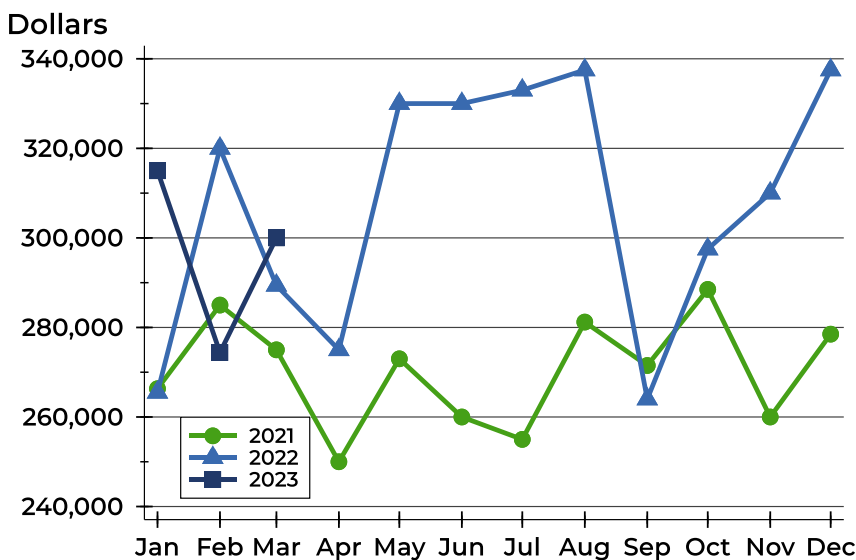
Pottawatomie County Closed Listings Analysis

Average Price



Month	2021	2022	2023
January	266,064	284,752	347,548
February	264,562	305,443	286,647
March	282,018	275,167	318,196
April	248,504	302,308	
May	266,490	310,831	
June	277,099	318,706	
July	271,821	344,468	
August	275,567	316,847	
September	277,140	293,881	
October	304,775	318,325	
November	275,848	311,843	
December	265,343	315,935	

Median Price

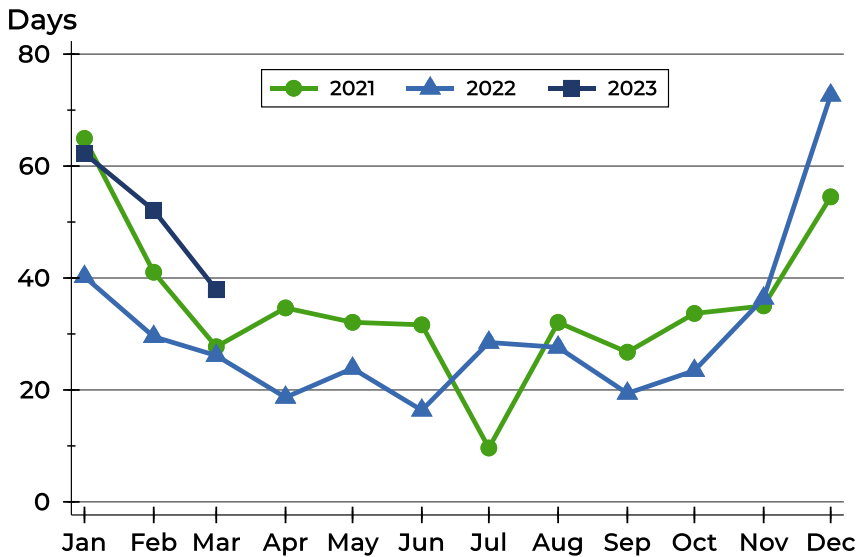


Month	2021	2022	2023
January	266,314	265,500	315,000
February	285,000	320,000	274,400
March	275,000	289,400	300,000
April	250,000	275,000	
May	273,000	330,000	
June	260,000	330,000	
July	255,000	333,000	
August	281,200	337,500	
September	271,500	264,000	
October	288,500	297,500	
November	260,000	310,000	
December	278,500	337,500	



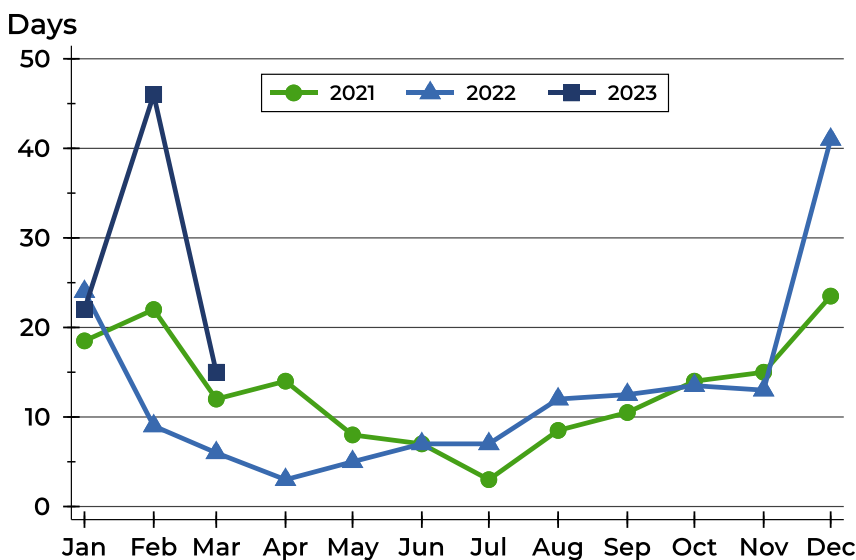
Pottawatomie County Closed Listings Analysis

Average DOM



Month	2021	2022	2023
January	65	40	62
February	41	30	52
March	28	26	38
April	35	19	
May	32	24	
June	32	16	
July	10	28	
August	32	28	
September	27	19	
October	34	23	
November	35	36	
December	55	73	

Median DOM



Month	2021	2022	2023
January	19	24	22
February	22	9	46
March	12	6	15
April	14	3	
May	8	5	
June	7	7	
July	3	7	
August	9	12	
September	11	13	
October	14	14	
November	15	13	
December	24	41	



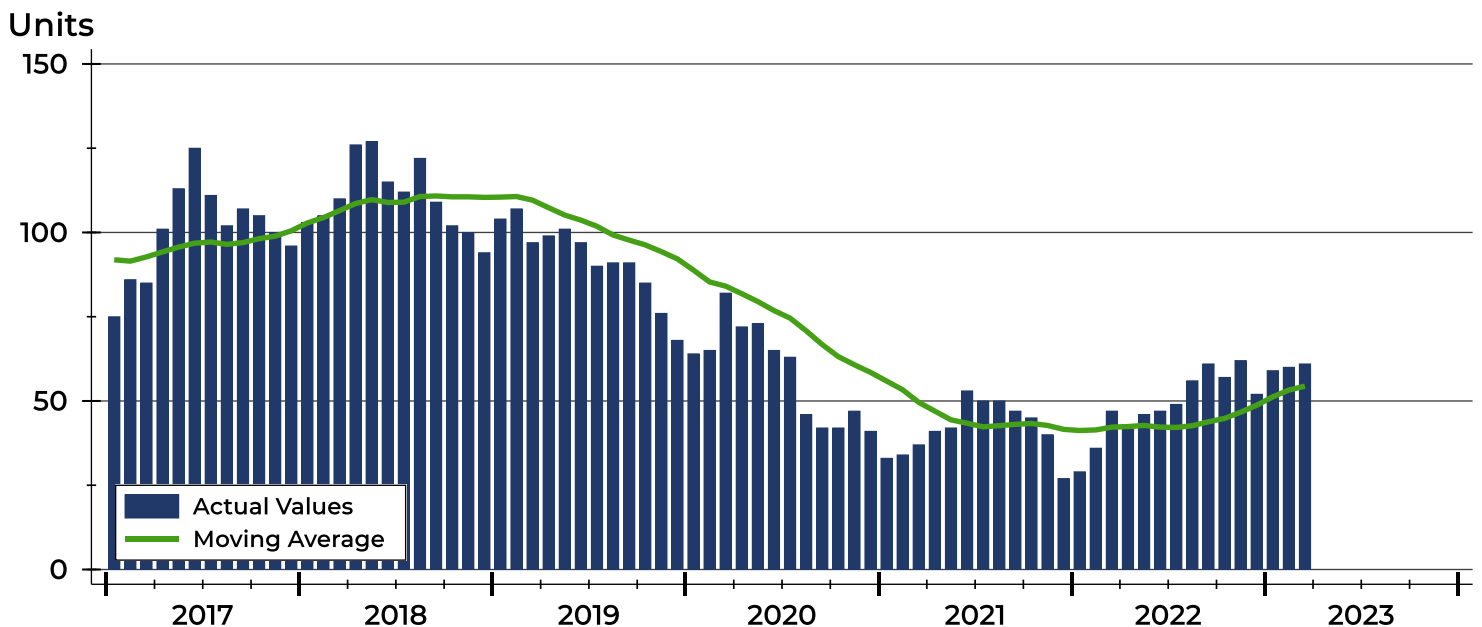
Pottawatomie County Active Listings Analysis

Summary Statistics for Active Listings		2023	End of March 2022	Change
Active Listings		61	47	29.8%
Volume (1,000s)		24,092	16,161	49.1%
Months' Supply		2.2	1.4	57.1%
Average	List Price	394,956	343,857	14.9%
	Days on Market	75	58	29.3%
	Percent of Original	98.6%	99.1%	-0.5%
Median	List Price	369,900	370,000	0.0%
	Days on Market	53	39	35.9%
	Percent of Original	100.0%	100.0%	0.0%

A total of 61 homes were available for sale in Pottawatomie County at the end of March. This represents a 2.2 months' supply of active listings.

The median list price of homes on the market at the end of March was \$369,900, showing little change from the same point in 2022. The typical time on market for active listings was 53 days, up from 39 days a year earlier.

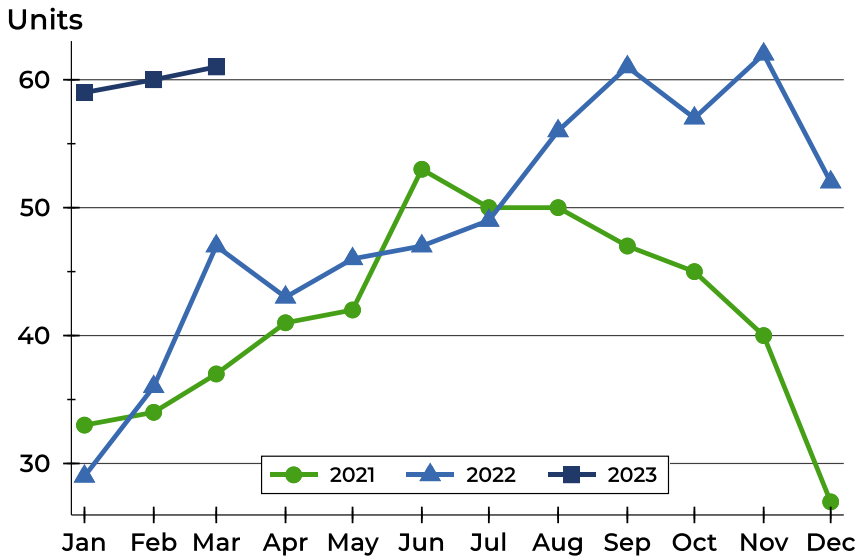
History of Active Listings





Pottawatomie County Active Listings Analysis

Active Listings by Month



Month	2021	2022	2023
January	33	29	59
February	34	36	60
March	37	47	61
April	41	43	
May	42	46	
June	53	47	
July	50	49	
August	50	56	
September	47	61	
October	45	57	
November	40	62	
December	27	52	

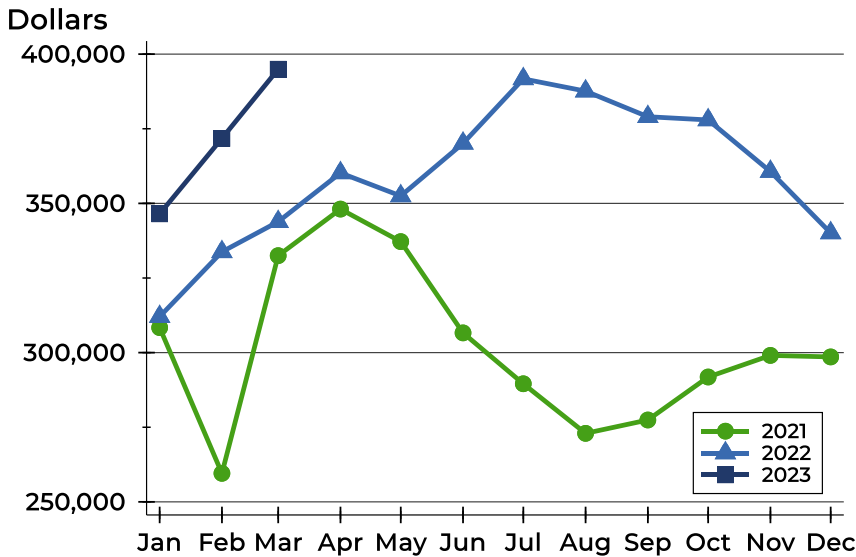
Active Listings by Price Range

Price Range	Active Listings		Months' Supply	List Price		Days on Market		Price as % of Orig.	
	Number	Percent		Average	Median	Avg.	Med.	Avg.	Med.
Below \$25,000	0	0.0%	N/A	N/A	N/A	N/A	N/A	N/A	N/A
\$25,000-\$49,999	0	0.0%	N/A	N/A	N/A	N/A	N/A	N/A	N/A
\$50,000-\$99,999	0	0.0%	0.0	N/A	N/A	N/A	N/A	N/A	N/A
\$100,000-\$124,999	2	3.3%	N/A	110,000	110,000	8	8	100.0%	100.0%
\$125,000-\$149,999	2	3.3%	2.7	127,500	127,500	89	89	93.3%	93.3%
\$150,000-\$174,999	2	3.3%	2.2	168,900	168,900	83	83	100.0%	100.0%
\$175,000-\$199,999	1	1.6%	N/A	175,000	175,000	53	53	81.4%	81.4%
\$200,000-\$249,999	3	4.9%	0.9	229,167	242,500	78	64	96.3%	100.0%
\$250,000-\$299,999	9	14.8%	1.8	277,100	270,000	76	69	99.5%	100.0%
\$300,000-\$399,999	22	36.1%	2.2	361,590	367,400	91	58	98.6%	100.0%
\$400,000-\$499,999	9	14.8%	2.2	440,189	442,000	92	68	99.5%	100.0%
\$500,000-\$749,999	10	16.4%	9.2	630,643	632,000	44	48	99.8%	100.0%
\$750,000-\$999,999	0	0.0%	N/A	N/A	N/A	N/A	N/A	N/A	N/A
\$1,000,000 and up	1	1.6%	N/A	1,700,000	1,700,000	5	5	100.0%	100.0%



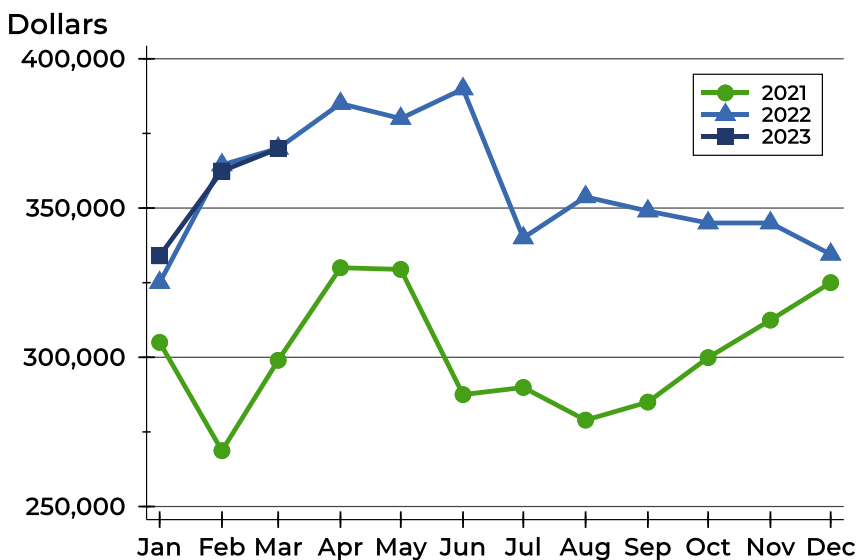
Pottawatomie County Active Listings Analysis

Average Price



Month	2021	2022	2023
January	308,385	312,066	346,498
February	259,565	333,767	371,789
March	332,489	343,857	394,956
April	348,095	360,213	
May	337,200	352,492	
June	306,614	370,121	
July	289,574	391,716	
August	272,958	387,600	
September	277,430	379,030	
October	291,840	377,949	
November	299,078	360,668	
December	298,563	340,103	

Median Price

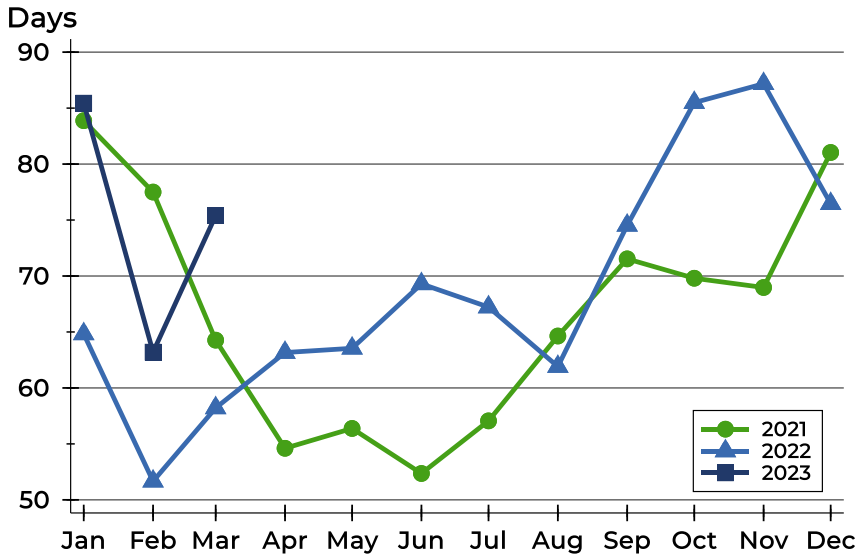


Month	2021	2022	2023
January	305,000	325,000	334,000
February	268,700	364,450	362,400
March	299,000	370,000	369,900
April	330,000	385,000	
May	329,450	380,000	
June	287,500	389,900	
July	289,900	340,000	
August	278,950	353,750	
September	285,000	349,000	
October	299,900	345,000	
November	312,450	345,000	
December	325,000	334,500	



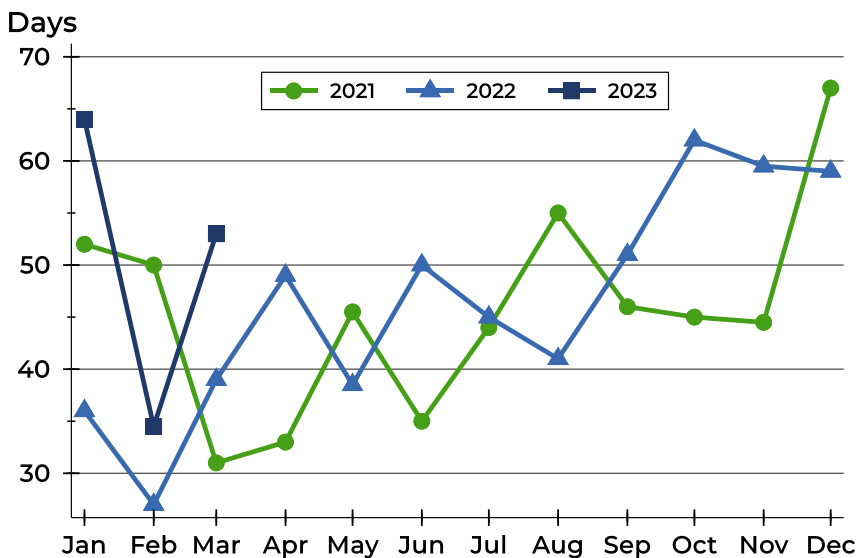
Pottawatomie County Active Listings Analysis

Average DOM



Month	2021	2022	2023
January	84	65	85
February	78	52	63
March	64	58	75
April	55	63	
May	56	64	
June	52	69	
July	57	67	
August	65	62	
September	72	75	
October	70	85	
November	69	87	
December	81	76	

Median DOM

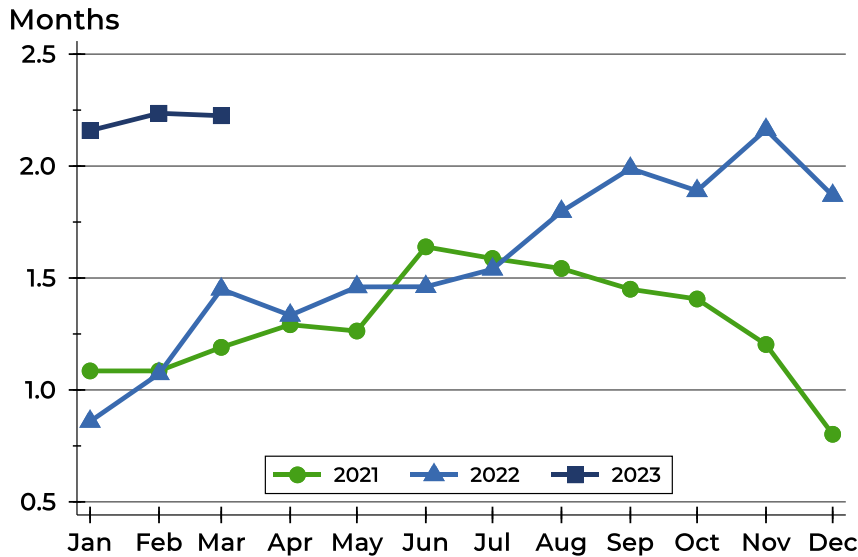


Month	2021	2022	2023
January	52	36	64
February	50	27	35
March	31	39	53
April	33	49	
May	46	39	
June	35	50	
July	44	45	
August	55	41	
September	46	51	
October	45	62	
November	45	60	
December	67	59	



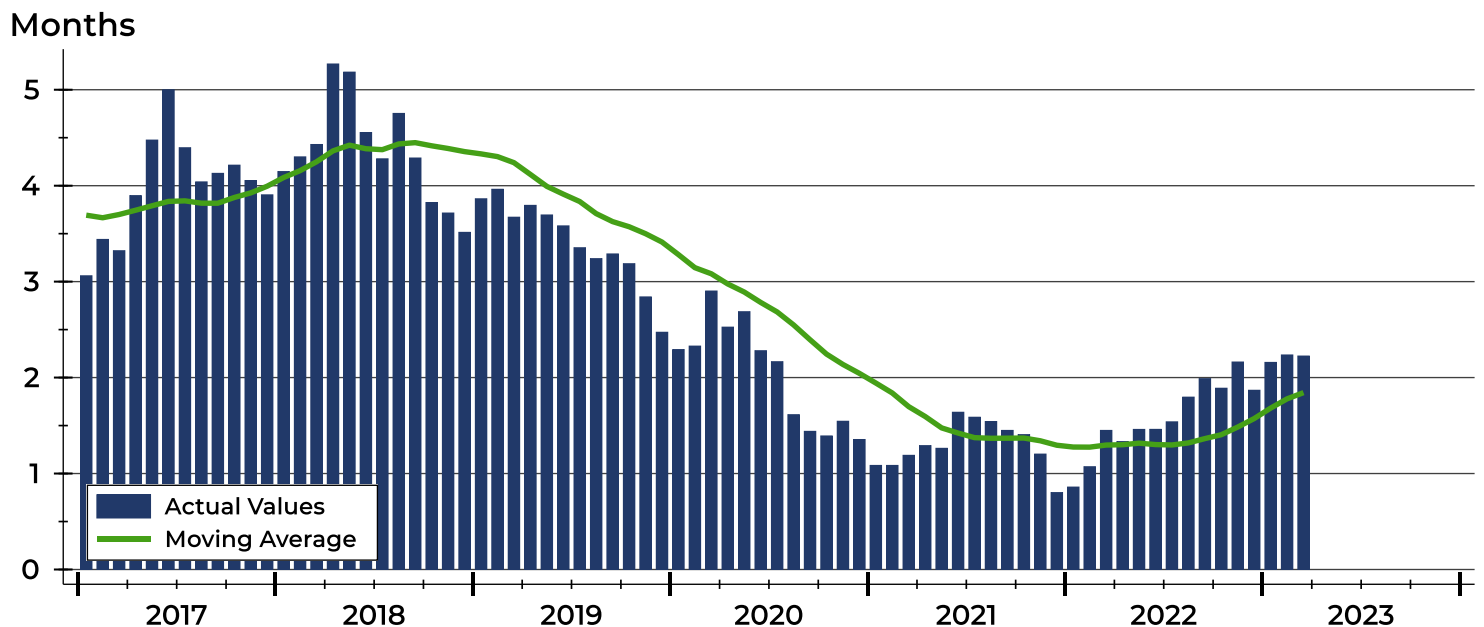
Pottawatomie County Months' Supply Analysis

Months' Supply by Month



Month	2021	2022	2023
January	1.1	0.9	2.2
February	1.1	1.1	2.2
March	1.2	1.4	2.2
April	1.3	1.3	
May	1.3	1.5	
June	1.6	1.5	
July	1.6	1.5	
August	1.5	1.8	
September	1.4	2.0	
October	1.4	1.9	
November	1.2	2.2	
December	0.8	1.9	

History of Month's Supply





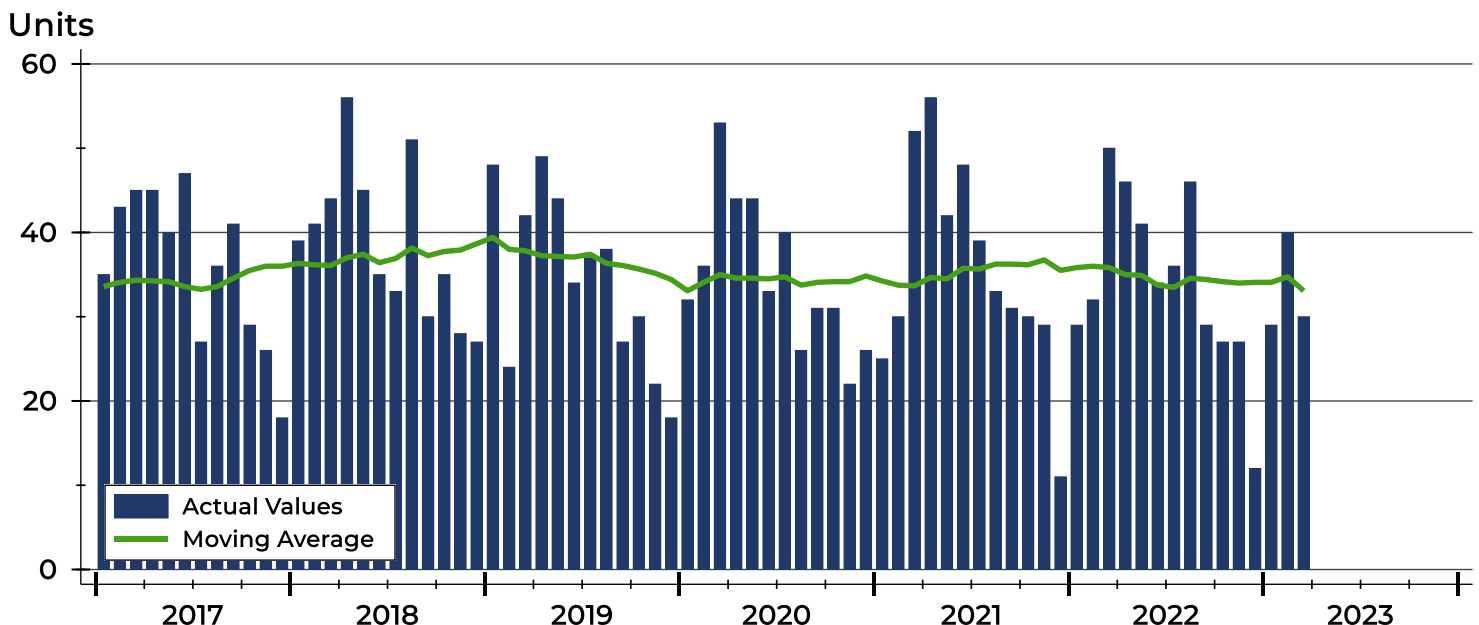
Pottawatomie County New Listings Analysis

Summary Statistics for New Listings		2023	March 2022	Change
Current Month	New Listings	30	50	-40.0%
	Volume (1,000s)	10,931	15,414	-29.1%
	Average List Price	364,380	308,271	18.2%
	Median List Price	336,250	310,000	8.5%
Year-to-Date	New Listings	99	111	-10.8%
	Volume (1,000s)	36,896	36,011	2.5%
	Average List Price	372,682	324,421	14.9%
	Median List Price	350,000	319,900	9.4%

A total of 30 new listings were added in Pottawatomie County during March, down 40.0% from the same month in 2022. Year-to-date Pottawatomie County has seen 99 new listings.

The median list price of these homes was \$336,250 up from \$310,000 in 2022.

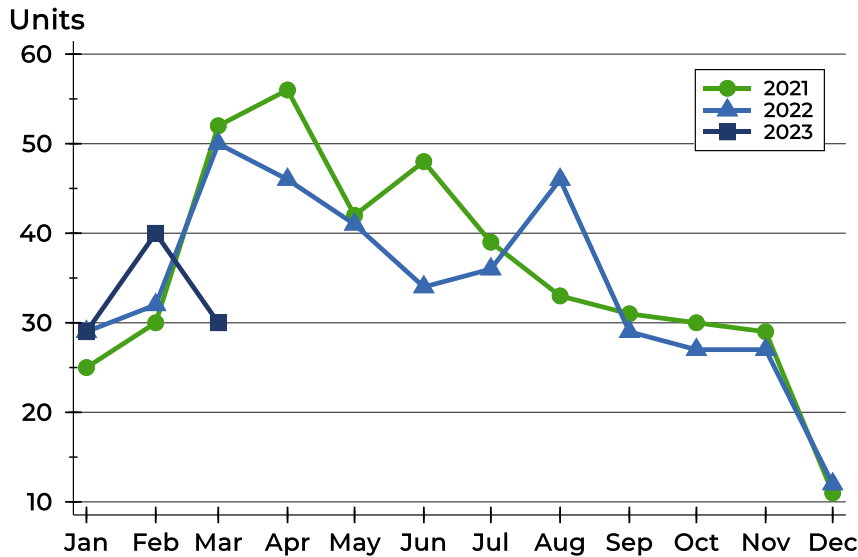
History of New Listings





Pottawatomie County New Listings Analysis

New Listings by Month



Month	2021	2022	2023
January	25	29	29
February	30	32	40
March	52	50	30
April	56	46	
May	42	41	
June	48	34	
July	39	36	
August	33	46	
September	31	29	
October	30	27	
November	29	27	
December	11	12	

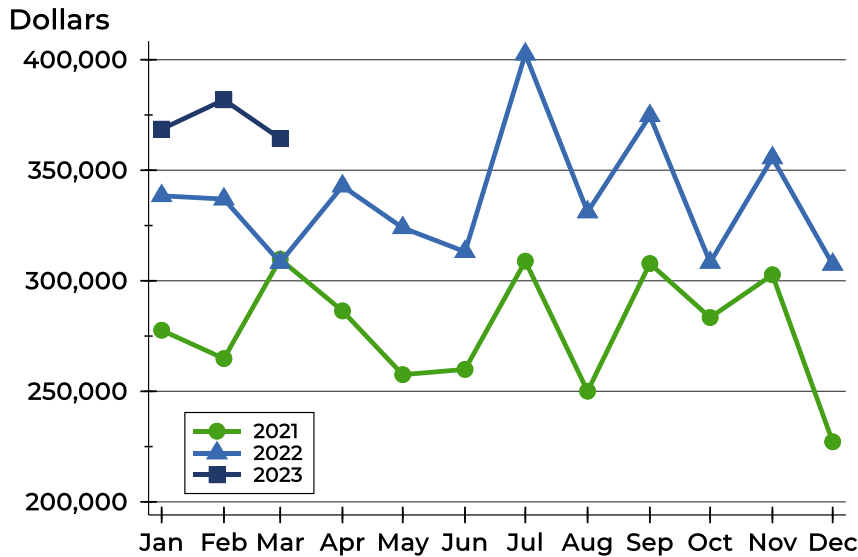
New Listings by Price Range

Price Range	New Listings		List Price		Days on Market		Price as % of Orig.	
	Number	Percent	Average	Median	Avg.	Med.	Avg.	Med.
Below \$25,000	0	0.0%	N/A	N/A	N/A	N/A	N/A	N/A
\$25,000-\$49,999	0	0.0%	N/A	N/A	N/A	N/A	N/A	N/A
\$50,000-\$99,999	2	6.7%	98,500	98,500	6	6	95.0%	95.0%
\$100,000-\$124,999	1	3.3%	110,000	110,000	21	21	100.0%	100.0%
\$125,000-\$149,999	0	0.0%	N/A	N/A	N/A	N/A	N/A	N/A
\$150,000-\$174,999	2	6.7%	159,000	159,000	2	2	100.0%	100.0%
\$175,000-\$199,999	0	0.0%	N/A	N/A	N/A	N/A	N/A	N/A
\$200,000-\$249,999	3	10.0%	220,000	215,000	9	7	100.0%	100.0%
\$250,000-\$299,999	5	16.7%	268,860	265,000	17	16	95.9%	98.1%
\$300,000-\$399,999	10	33.3%	365,730	375,750	10	8	99.9%	100.0%
\$400,000-\$499,999	4	13.3%	442,450	432,450	25	27	100.0%	100.0%
\$500,000-\$749,999	2	6.7%	587,500	587,500	19	19	100.0%	100.0%
\$750,000-\$999,999	0	0.0%	N/A	N/A	N/A	N/A	N/A	N/A
\$1,000,000 and up	1	3.3%	1,700,000	1,700,000	12	12	100.0%	100.0%



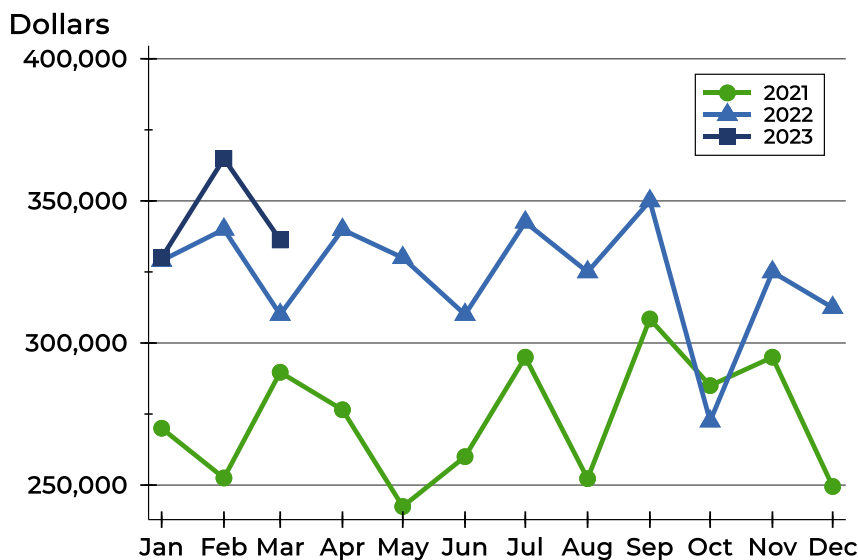
Pottawatomie County New Listings Analysis

Average Price



Month	2021	2022	2023
January	277,640	338,438	368,603
February	264,803	336,953	381,866
March	309,779	308,271	364,380
April	286,386	342,847	
May	257,544	323,966	
June	259,931	313,151	
July	308,895	402,519	
August	250,072	331,116	
September	307,825	374,641	
October	283,383	308,297	
November	302,724	355,596	
December	227,186	307,429	

Median Price



Month	2021	2022	2023
January	270,000	329,000	330,000
February	252,500	340,000	364,900
March	289,700	310,000	336,250
April	276,500	339,900	
May	242,450	330,000	
June	260,000	310,000	
July	295,000	342,500	
August	252,250	325,000	
September	308,450	350,000	
October	285,000	272,500	
November	295,000	325,000	
December	249,500	312,425	



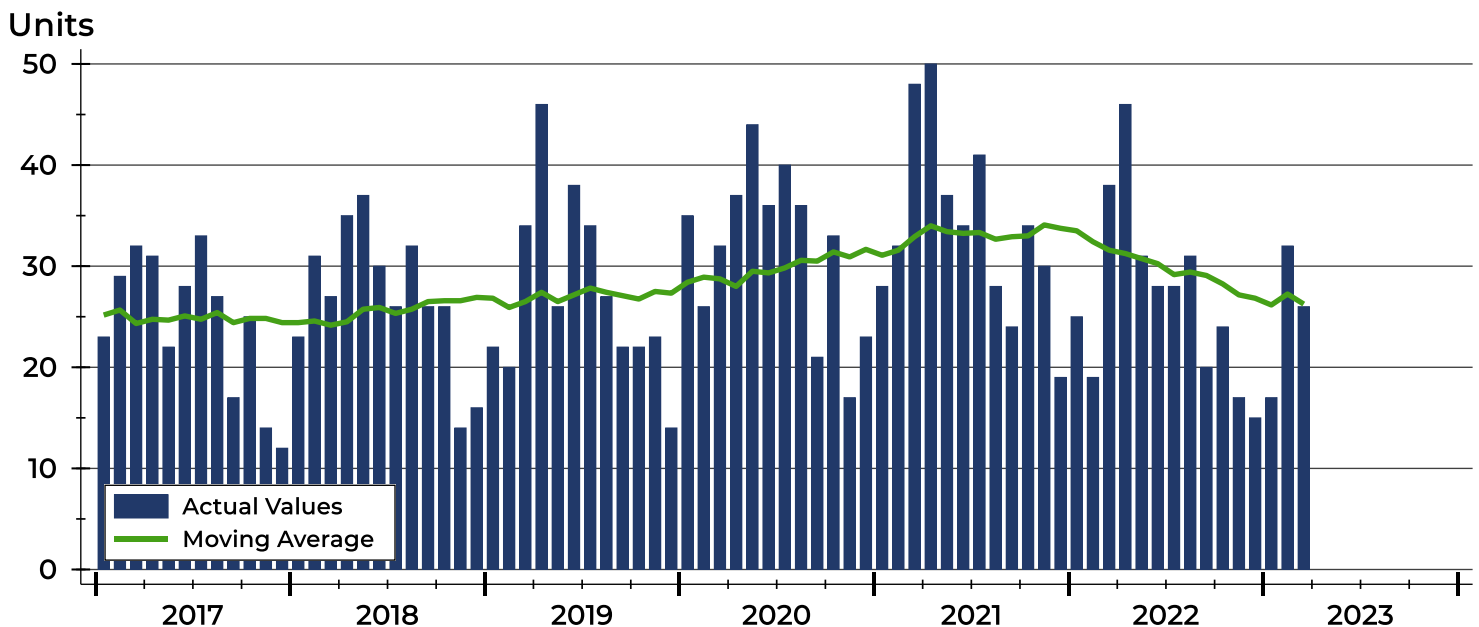
Pottawatomie County Contracts Written Analysis

Summary Statistics for Contracts Written		2023	March 2022	Change	2023	Year-to-Date 2022	Change
Contracts Written		26	38	-31.6%	75	82	-8.5%
Volume (1,000s)		7,550	11,749	-35.7%	23,682	25,055	-5.5%
Average	Sale Price	290,381	309,196	-6.1%	315,764	305,546	3.3%
	Days on Market	30	8	275.0%	48	21	128.6%
	Percent of Original	98.9%	101.4%	-2.5%	98.9%	101.3%	-2.4%
Median	Sale Price	297,400	303,700	-2.1%	315,000	297,000	6.1%
	Days on Market	12	3	300.0%	16	5	220.0%
	Percent of Original	100.0%	100.7%	-0.7%	100.0%	100.6%	-0.6%

A total of 26 contracts for sale were written in Pottawatomie County during the month of March, down from 38 in 2022. The median list price of these homes was \$297,400, down from \$303,700 the prior year.

Half of the homes that went under contract in March were on the market less than 12 days, compared to 3 days in March 2022.

History of Contracts Written





**March
2023**

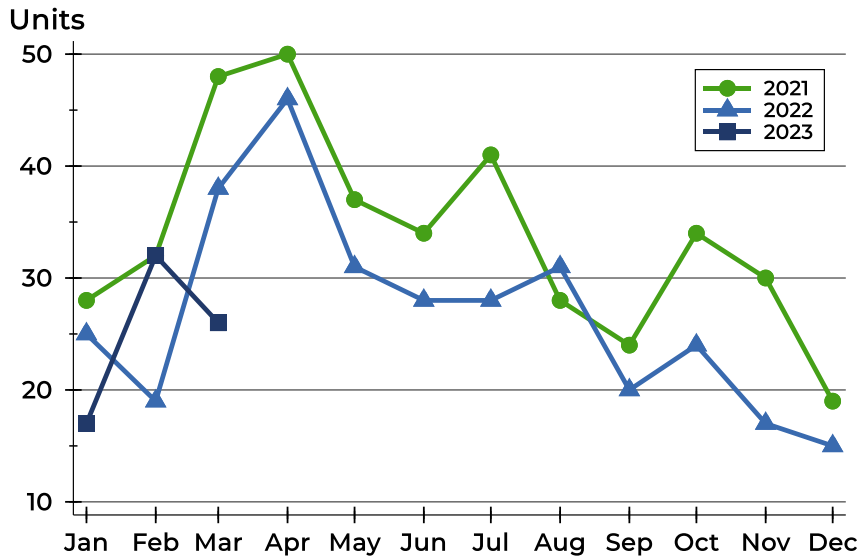
Flint Hills MLS Statistics



**FLINT HILLS
ASSOCIATION
OF REALTORS®**

Pottawatomie County Contracts Written Analysis

Contracts Written by Month



Month	2021	2022	2023
January	28	25	17
February	32	19	32
March	48	38	26
April	50	46	
May	37	31	
June	34	28	
July	41	28	
August	28	31	
September	24	20	
October	34	24	
November	30	17	
December	19	15	

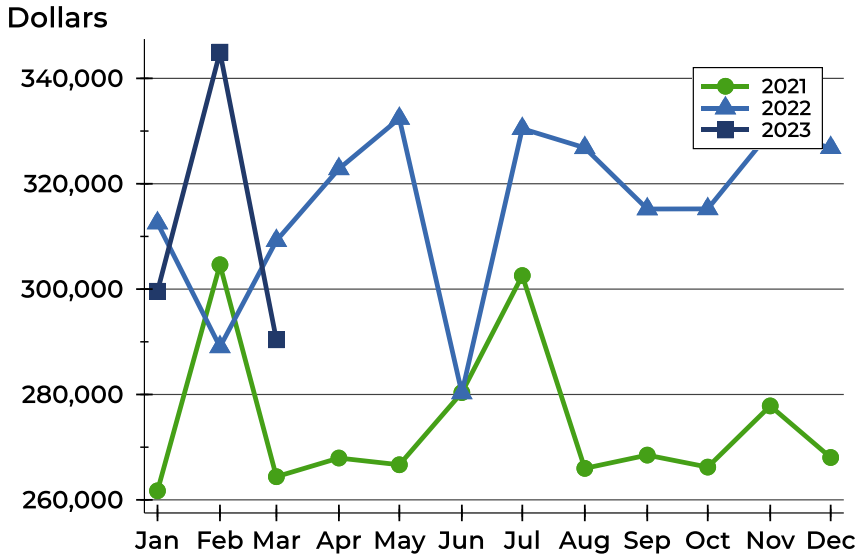
Contracts Written by Price Range

Price Range	Contracts Written		List Price		Days on Market		Price as % of Orig.	
	Number	Percent	Average	Median	Avg.	Med.	Avg.	Med.
Below \$25,000	0	0.0%	N/A	N/A	N/A	N/A	N/A	N/A
\$25,000-\$49,999	0	0.0%	N/A	N/A	N/A	N/A	N/A	N/A
\$50,000-\$99,999	1	3.8%	98,000	98,000	2	2	100.0%	100.0%
\$100,000-\$124,999	1	3.8%	105,000	105,000	13	13	100.0%	100.0%
\$125,000-\$149,999	1	3.8%	145,000	145,000	108	108	93.1%	93.1%
\$150,000-\$174,999	2	7.7%	159,000	159,000	2	2	100.0%	100.0%
\$175,000-\$199,999	1	3.8%	184,000	184,000	25	25	97.4%	97.4%
\$200,000-\$249,999	4	15.4%	231,000	239,500	56	35	99.5%	100.0%
\$250,000-\$299,999	4	15.4%	281,050	282,200	13	11	97.8%	99.2%
\$300,000-\$399,999	8	30.8%	354,625	353,750	13	10	99.8%	100.0%
\$400,000-\$499,999	3	11.5%	431,600	429,900	67	24	100.0%	100.0%
\$500,000-\$749,999	1	3.8%	519,900	519,900	64	64	94.2%	94.2%
\$750,000-\$999,999	0	0.0%	N/A	N/A	N/A	N/A	N/A	N/A
\$1,000,000 and up	0	0.0%	N/A	N/A	N/A	N/A	N/A	N/A



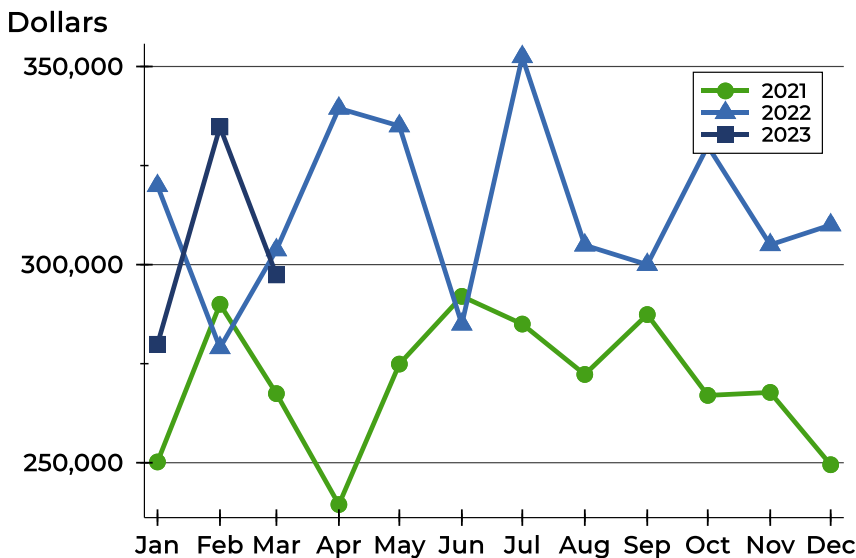
Pottawatomie County Contracts Written Analysis

Average Price



Month	2021	2022	2023
January	261,718	312,546	299,594
February	304,628	289,037	344,978
March	264,400	309,196	290,381
April	267,945	322,826	
May	266,667	332,385	
June	280,366	280,298	
July	302,572	330,457	
August	265,977	326,824	
September	268,499	315,205	
October	266,221	315,234	
November	277,837	329,815	
December	268,045	326,840	

Median Price

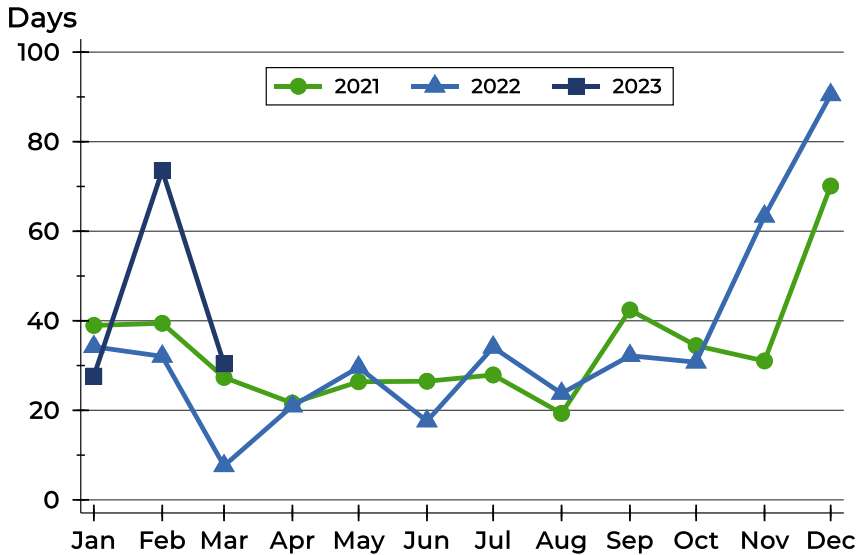


Month	2021	2022	2023
January	250,200	319,900	279,900
February	290,000	279,000	334,750
March	267,450	303,700	297,400
April	239,450	339,450	
May	274,900	335,000	
June	292,000	284,950	
July	285,000	352,450	
August	272,280	304,900	
September	287,400	300,000	
October	267,000	329,950	
November	267,750	305,000	
December	249,500	310,000	



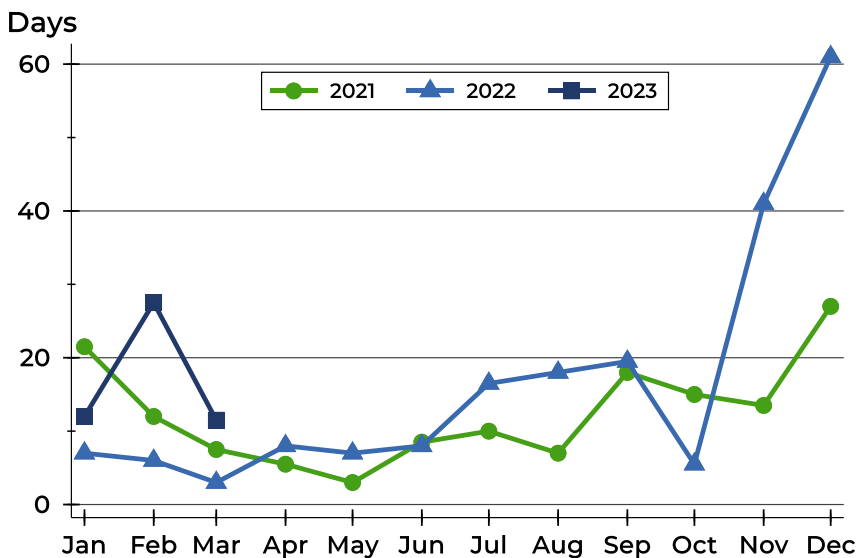
Pottawatomie County Contracts Written Analysis

Average DOM



Month	2021	2022	2023
January	39	34	28
February	39	32	74
March	27	8	30
April	22	21	
May	26	30	
June	27	18	
July	28	34	
August	19	24	
September	42	32	
October	34	31	
November	31	63	
December	70	90	

Median DOM



Month	2021	2022	2023
January	22	7	12
February	12	6	28
March	8	3	12
April	6	8	
May	3	7	
June	9	8	
July	10	17	
August	7	18	
September	18	20	
October	15	6	
November	14	41	
December	27	61	



Pottawatomie County Pending Contracts Analysis

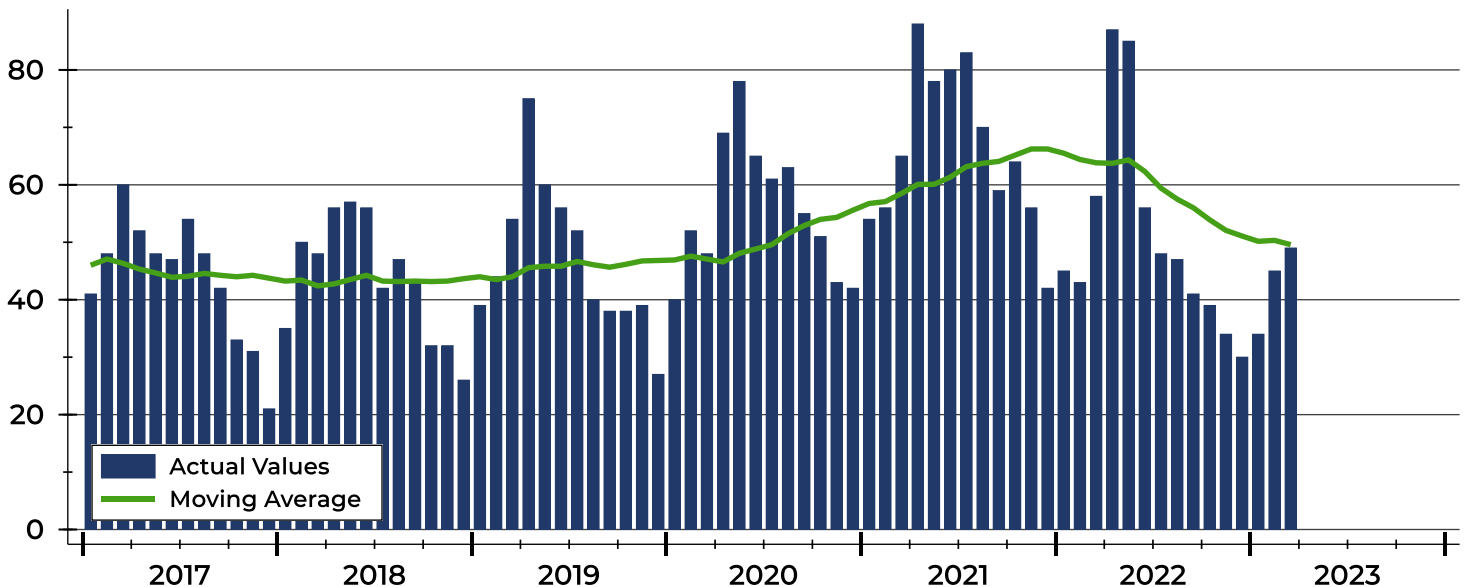
Summary Statistics for Pending Contracts		2023	End of March 2022	Change
Pending Contracts		49	58	-15.5%
Volume (1,000s)		16,084	17,414	-7.6%
Average	List Price	328,237	300,248	9.3%
	Days on Market	47	25	88.0%
	Percent of Original	100.2%	100.4%	-0.2%
Median	List Price	332,000	282,250	17.6%
	Days on Market	16	5	220.0%
	Percent of Original	100.0%	100.0%	0.0%

A total of 49 listings in Pottawatomie County had contracts pending at the end of March, down from 58 contracts pending at the end of March 2022.

Pending contracts reflect listings with a contract in place at the end of the month. In contrast, contracts written measures the number of listings put under contract during the month.

History of Pending Contracts

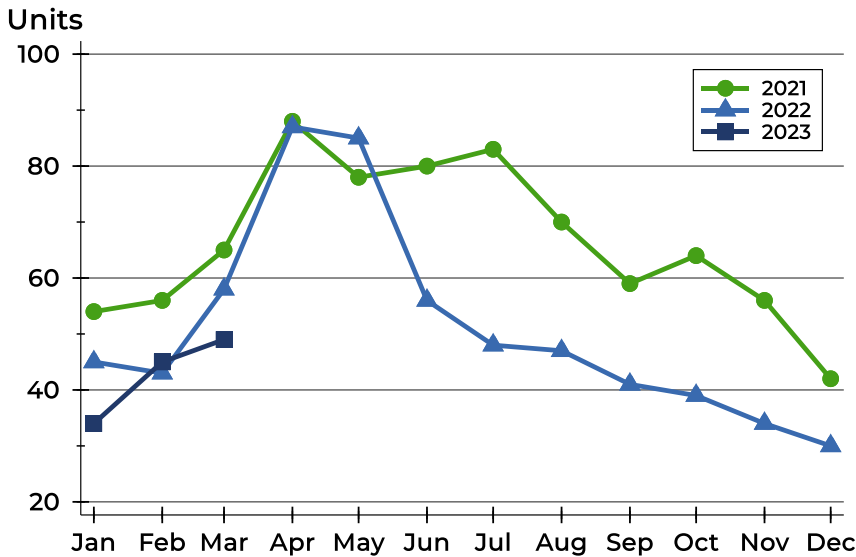
Units





Pottawatomie County Pending Contracts Analysis

Pending Contracts by Month



Month	2021	2022	2023
January	54	45	34
February	56	43	45
March	65	58	49
April	88	87	
May	78	85	
June	80	56	
July	83	48	
August	70	47	
September	59	41	
October	64	39	
November	56	34	
December	42	30	

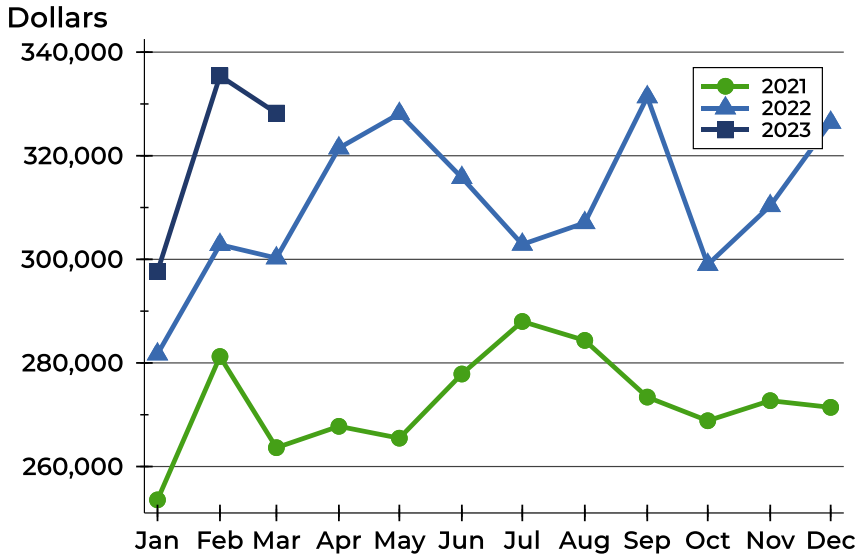
Pending Contracts by Price Range

Price Range	Pending Contracts		List Price		Days on Market		Price as % of Orig.	
	Number	Percent	Average	Median	Avg.	Med.	Avg.	Med.
Below \$25,000	0	0.0%	N/A	N/A	N/A	N/A	N/A	N/A
\$25,000-\$49,999	0	0.0%	N/A	N/A	N/A	N/A	N/A	N/A
\$50,000-\$99,999	1	2.0%	98,000	98,000	2	2	100.0%	100.0%
\$100,000-\$124,999	1	2.0%	105,000	105,000	13	13	100.0%	100.0%
\$125,000-\$149,999	1	2.0%	145,000	145,000	66	66	100.0%	100.0%
\$150,000-\$174,999	2	4.1%	159,000	159,000	2	2	100.0%	100.0%
\$175,000-\$199,999	1	2.0%	184,000	184,000	25	25	97.4%	97.4%
\$200,000-\$249,999	8	16.3%	226,663	231,750	31	8	99.7%	100.0%
\$250,000-\$299,999	6	12.2%	279,883	282,200	15	11	103.8%	100.0%
\$300,000-\$399,999	16	32.7%	350,806	338,750	77	14	99.7%	100.0%
\$400,000-\$499,999	8	16.3%	426,025	427,400	45	27	99.3%	100.0%
\$500,000-\$749,999	5	10.2%	543,980	545,000	52	64	100.5%	100.0%
\$750,000-\$999,999	0	0.0%	N/A	N/A	N/A	N/A	N/A	N/A
\$1,000,000 and up	0	0.0%	N/A	N/A	N/A	N/A	N/A	N/A



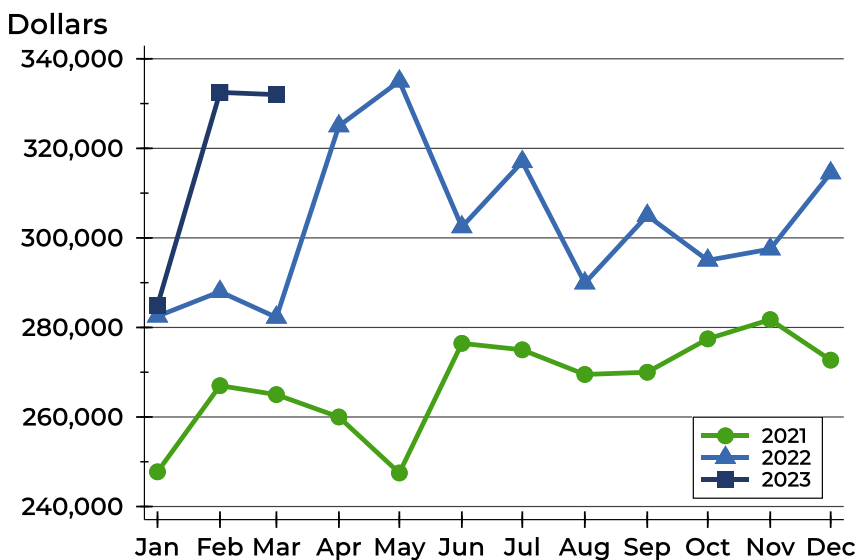
Pottawatomie County Pending Contracts Analysis

Average Price



Month	2021	2022	2023
January	253,565	281,700	297,634
February	281,241	302,832	335,418
March	263,641	300,248	328,237
April	267,766	321,471	
May	265,473	328,125	
June	277,862	315,771	
July	288,006	302,886	
August	284,350	307,048	
September	273,403	331,346	
October	268,839	298,977	
November	272,718	310,334	
December	271,423	326,423	

Median Price

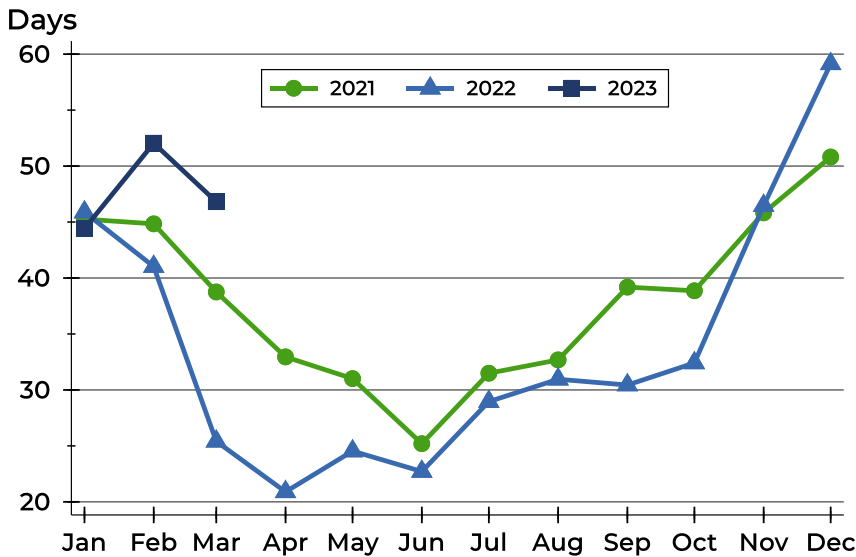


Month	2021	2022	2023
January	247,750	282,500	284,950
February	267,000	288,000	332,500
March	265,000	282,250	332,000
April	260,000	325,000	
May	247,500	335,000	
June	276,450	302,450	
July	275,000	317,000	
August	269,500	289,900	
September	270,000	305,000	
October	277,450	295,000	
November	281,750	297,500	
December	272,700	314,500	



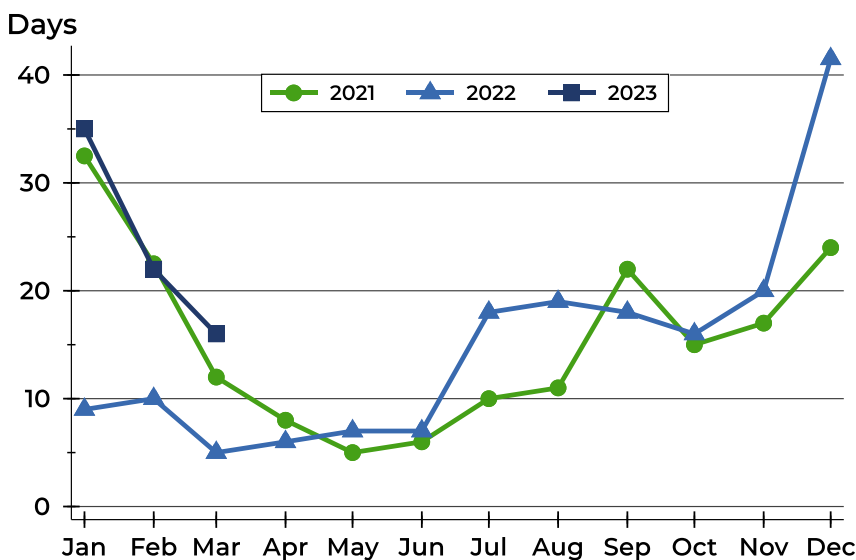
Pottawatomie County Pending Contracts Analysis

Average DOM



Month	2021	2022	2023
January	45	46	44
February	45	41	52
March	39	25	47
April	33	21	
May	31	25	
June	25	23	
July	31	29	
August	33	31	
September	39	30	
October	39	32	
November	46	46	
December	51	59	

Median DOM



Month	2021	2022	2023
January	33	9	35
February	23	10	22
March	12	5	16
April	8	6	
May	5	7	
June	6	7	
July	10	18	
August	11	19	
September	22	18	
October	15	16	
November	17	20	
December	24	42	