



**April  
2023**

# Flint Hills MLS Statistics



**FLINT HILLS  
ASSOCIATION  
OF REALTORS®**

## Pottawatomie County Housing Report



### Market Overview

#### Pottawatomie County Home Sales Fell in April

Total home sales in Pottawatomie County fell last month to 24 units, compared to 27 units in April 2022. Total sales volume was \$8.3 million, up from a year earlier.

The median sale price in April was \$329,500, up from \$275,000 a year earlier. Homes that sold in April were typically on the market for 10 days and sold for 100.0% of their list prices.

#### Pottawatomie County Active Listings Up at End of April

The total number of active listings in Pottawatomie County at the end of April was 57 units, up from 43 at the same point in 2022. This represents a 2.1 months' supply of homes available for sale. The median list price of homes on the market at the end of April was \$364,900.

During April, a total of 27 contracts were written down from 46 in April 2022. At the end of the month, there were 51 contracts still pending.

### Report Contents

- Summary Statistics – Page 2
- Closed Listing Analysis – Page 3
- Active Listings Analysis – Page 7
- Months' Supply Analysis – Page 11
- New Listings Analysis – Page 12
- Contracts Written Analysis – Page 15
- Pending Contracts Analysis – Page 19

### Contact Information

Margaret Pendleton, Association Executive  
 Flint Hills Association of REALTORS®  
 205 S. Seth Child Road  
 Manhattan, KS 66502  
 785-776-1203  
[ae@flinthillsrealtors.net](mailto:ae@flinthillsrealtors.net)  
[www.flinthillsrealtors.net](http://www.flinthillsrealtors.net)



**April  
2023**

# Flint Hills MLS Statistics



**FLINT HILLS  
ASSOCIATION  
OF REALTORS®**

## Pottawatomie County Summary Statistics

April MLS Statistics Three-year History		Current Month			Year-to-Date		
		2023	2022	2021	2023	2022	2021
<b>Home Sales</b>		<b>24</b>	<b>27</b>	<b>29</b>	<b>82</b>	<b>87</b>	<b>104</b>
Change from prior year		-11.1%	-6.9%	38.1%	-5.7%	-16.3%	20.9%
<b>Active Listings</b>		<b>57</b>	<b>43</b>	<b>41</b>	<b>N/A</b>	<b>N/A</b>	<b>N/A</b>
Change from prior year		32.6%	4.9%	-43.1%			
<b>Months' Supply</b>		<b>2.1</b>	<b>1.3</b>	<b>1.3</b>	<b>N/A</b>	<b>N/A</b>	<b>N/A</b>
Change from prior year		61.5%	0.0%	-48.0%			
<b>New Listings</b>		<b>29</b>	<b>46</b>	<b>56</b>	<b>130</b>	<b>157</b>	<b>163</b>
Change from prior year		-37.0%	-17.9%	27.3%	-17.2%	-3.7%	-1.2%
<b>Contracts Written</b>		<b>27</b>	<b>46</b>	<b>50</b>	<b>102</b>	<b>128</b>	<b>158</b>
Change from prior year		-41.3%	-8.0%	35.1%	-20.3%	-19.0%	21.5%
<b>Pending Contracts</b>		<b>51</b>	<b>87</b>	<b>88</b>	<b>N/A</b>	<b>N/A</b>	<b>N/A</b>
Change from prior year		-41.4%	-1.1%	27.5%			
<b>Sales Volume (1,000s)</b>		<b>8,274</b>	<b>8,162</b>	<b>7,207</b>	<b>26,579</b>	<b>25,631</b>	<b>27,568</b>
Change from prior year		1.4%	13.3%	48.1%	3.7%	-7.0%	30.3%
Average	<b>Sale Price</b>	<b>344,767</b>	<b>302,308</b>	<b>248,504</b>	<b>324,135</b>	<b>294,604</b>	<b>265,073</b>
	Change from prior year	14.0%	21.7%	7.2%	10.0%	11.1%	7.8%
	<b>List Price of Actives</b>	<b>393,429</b>	<b>360,213</b>	<b>348,095</b>	<b>N/A</b>	<b>N/A</b>	<b>N/A</b>
	Change from prior year	9.2%	3.5%	32.9%			
	<b>Days on Market</b>	<b>51</b>	<b>19</b>	<b>35</b>	<b>52</b>	<b>28</b>	<b>40</b>
Change from prior year	168.4%	-45.7%	9.4%	85.7%	-30.0%	-43.7%	
	<b>Percent of List</b>	<b>99.5%</b>	<b>100.8%</b>	<b>99.1%</b>	<b>99.5%</b>	<b>100.9%</b>	<b>98.7%</b>
Change from prior year	-1.3%	1.7%	0.0%	-1.4%	2.2%	-0.4%	
	<b>Percent of Original</b>	<b>99.4%</b>	<b>100.9%</b>	<b>98.4%</b>	<b>98.0%</b>	<b>100.2%</b>	<b>97.7%</b>
Change from prior year	-1.5%	2.5%	0.1%	-2.2%	2.6%	0.5%	
Median	<b>Sale Price</b>	<b>329,500</b>	<b>275,000</b>	<b>250,000</b>	<b>315,000</b>	<b>285,000</b>	<b>266,500</b>
	Change from prior year	19.8%	10.0%	11.1%	10.5%	6.9%	12.0%
	<b>List Price of Actives</b>	<b>364,900</b>	<b>385,000</b>	<b>330,000</b>	<b>N/A</b>	<b>N/A</b>	<b>N/A</b>
	Change from prior year	-5.2%	16.7%	33.9%			
	<b>Days on Market</b>	<b>10</b>	<b>3</b>	<b>14</b>	<b>19</b>	<b>7</b>	<b>15</b>
Change from prior year	233.3%	-78.6%	-17.6%	171.4%	-53.3%	-34.8%	
	<b>Percent of List</b>	<b>100.0%</b>	<b>100.0%</b>	<b>100.0%</b>	<b>100.0%</b>	<b>100.0%</b>	<b>100.0%</b>
Change from prior year	0.0%	0.0%	0.5%	0.0%	0.0%	0.4%	
	<b>Percent of Original</b>	<b>100.0%</b>	<b>100.0%</b>	<b>100.0%</b>	<b>99.3%</b>	<b>100.0%</b>	<b>100.0%</b>
Change from prior year	0.0%	0.0%	1.2%	-0.7%	0.0%	1.3%	

Note: Year-to-date statistics cannot be calculated for Active Listings, Months' Supply and Pending Contracts.



# Pottawatomie County Closed Listings Analysis

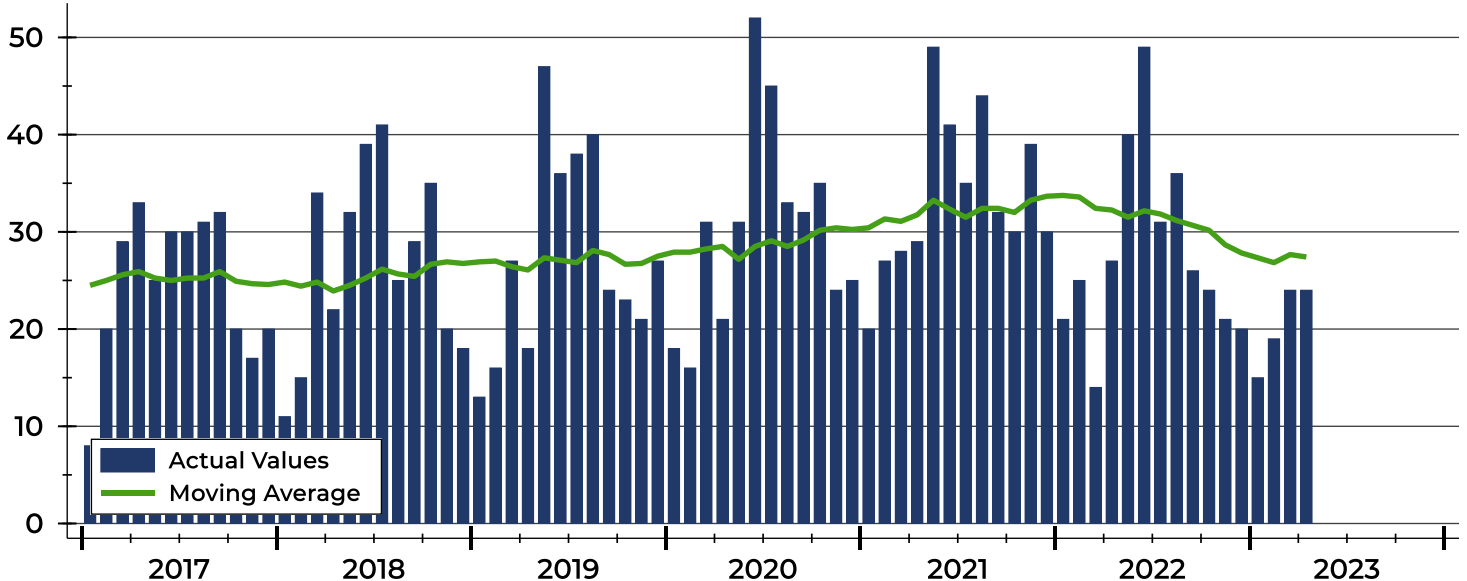
Summary Statistics for Closed Listings		2023	April 2022	Change	2023	Year-to-Date 2022	Change
Closed Listings		24	27	-11.1%	82	87	-5.7%
Volume (1,000s)		8,274	8,162	1.4%	26,579	25,631	3.7%
Months' Supply		2.1	1.3	61.5%	N/A	N/A	N/A
Average	Sale Price	344,767	302,308	14.0%	324,135	294,604	10.0%
	Days on Market	51	19	168.4%	52	28	85.7%
	Percent of List	99.5%	100.8%	-1.3%	99.5%	100.9%	-1.4%
	Percent of Original	99.4%	100.9%	-1.5%	98.0%	100.2%	-2.2%
Median	Sale Price	329,500	275,000	19.8%	315,000	285,000	10.5%
	Days on Market	10	3	233.3%	19	7	171.4%
	Percent of List	100.0%	100.0%	0.0%	100.0%	100.0%	0.0%
	Percent of Original	100.0%	100.0%	0.0%	99.3%	100.0%	-0.7%

A total of 24 homes sold in Pottawatomie County in April, down from 27 units in April 2022. Total sales volume rose to \$8.3 million compared to \$8.2 million in the previous year.

The median sales price in April was \$329,500, up 19.8% compared to the prior year. Median days on market was 10 days, down from 16 days in March, but up from 3 in April 2022.

## History of Closed Listings

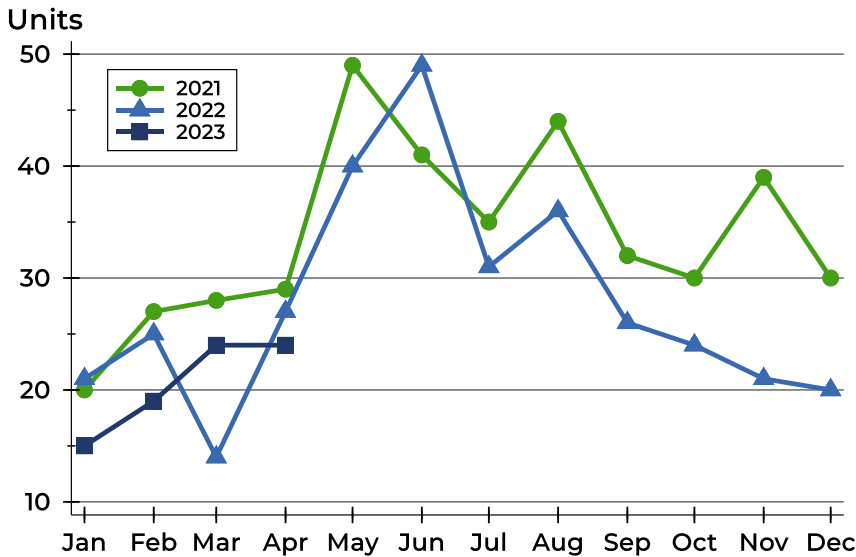
Units





## Pottawatomie County Closed Listings Analysis

### Closed Listings by Month



Month	2021	2022	2023
January	20	21	15
February	27	25	19
March	28	14	24
April	29	27	24
May	49	40	
June	41	49	
July	35	31	
August	44	36	
September	32	26	
October	30	24	
November	39	21	
December	30	20	

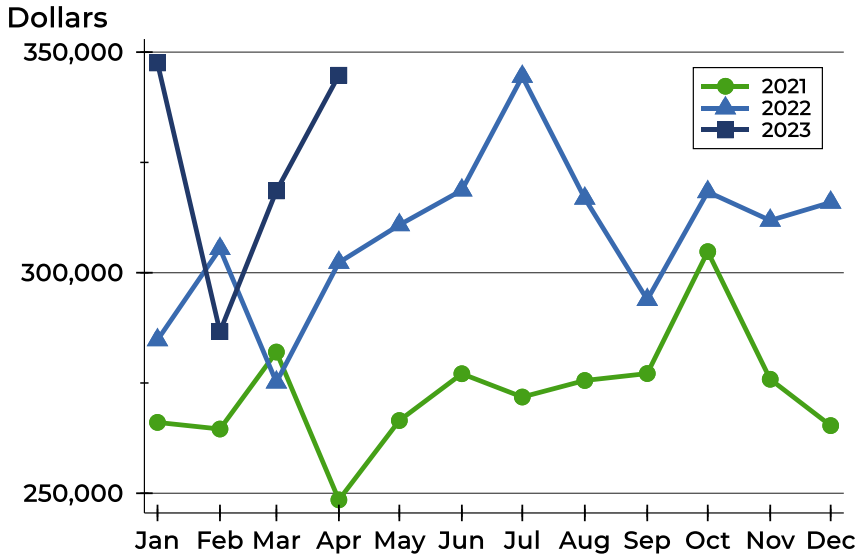
### Closed Listings by Price Range

Price Range	Sales		Months' Supply	Sale Price		Days on Market		Price as % of List		Price as % of Orig.	
	Number	Percent		Average	Median	Avg.	Med.	Avg.	Med.	Avg.	Med.
Below \$25,000	0	0.0%	N/A	N/A	N/A	N/A	N/A	N/A	N/A	N/A	N/A
\$25,000-\$49,999	0	0.0%	N/A	N/A	N/A	N/A	N/A	N/A	N/A	N/A	N/A
\$50,000-\$99,999	1	4.2%	2.7	98,000	98,000	13	13	93.3%	93.3%	93.3%	93.3%
\$100,000-\$124,999	0	0.0%	N/A	N/A	N/A	N/A	N/A	N/A	N/A	N/A	N/A
\$125,000-\$149,999	0	0.0%	N/A	N/A	N/A	N/A	N/A	N/A	N/A	N/A	N/A
\$150,000-\$174,999	2	8.3%	4.4	168,000	168,000	2	2	105.7%	105.7%	105.7%	105.7%
\$175,000-\$199,999	1	4.2%	0.9	189,000	189,000	25	25	102.7%	102.7%	100.0%	100.0%
\$200,000-\$249,999	3	12.5%	1.2	213,000	205,000	55	8	100.0%	100.0%	99.3%	100.0%
\$250,000-\$299,999	2	8.3%	1.3	292,500	292,500	14	14	99.2%	99.2%	99.2%	99.2%
\$300,000-\$399,999	7	29.2%	1.7	351,786	330,000	99	11	98.8%	98.5%	98.9%	99.1%
\$400,000-\$499,999	5	20.8%	2.1	455,980	449,900	39	41	98.1%	100.0%	97.5%	100.0%
\$500,000-\$749,999	3	12.5%	9.4	561,667	565,000	38	3	99.7%	100.0%	101.5%	100.9%
\$750,000-\$999,999	0	0.0%	N/A	N/A	N/A	N/A	N/A	N/A	N/A	N/A	N/A
\$1,000,000 and up	0	0.0%	N/A	N/A	N/A	N/A	N/A	N/A	N/A	N/A	N/A



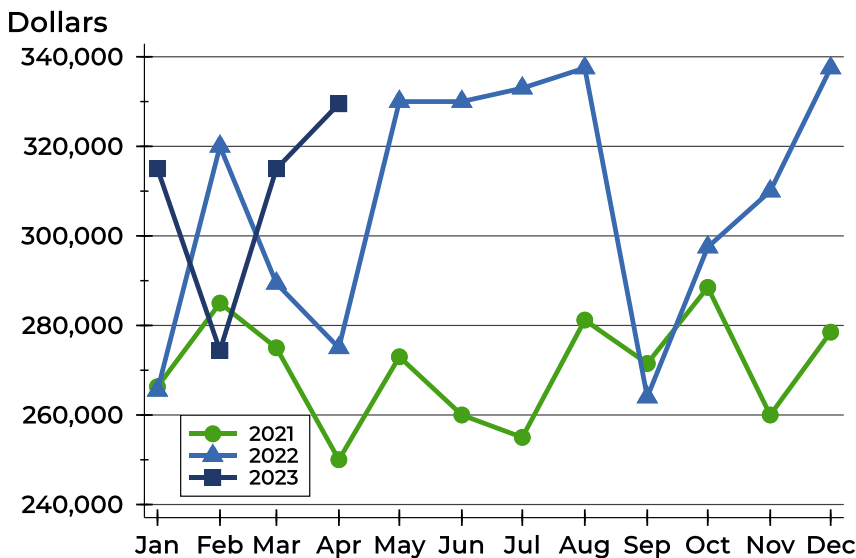
## Pottawatomie County Closed Listings Analysis

### Average Price



Month	2021	2022	2023
January	266,064	284,752	347,548
February	264,562	305,443	286,647
March	282,018	275,167	318,546
April	248,504	302,308	344,767
May	266,490	310,831	
June	277,099	318,706	
July	271,821	344,468	
August	275,567	316,847	
September	277,140	293,881	
October	304,775	318,325	
November	275,848	311,843	
December	265,343	315,935	

### Median Price

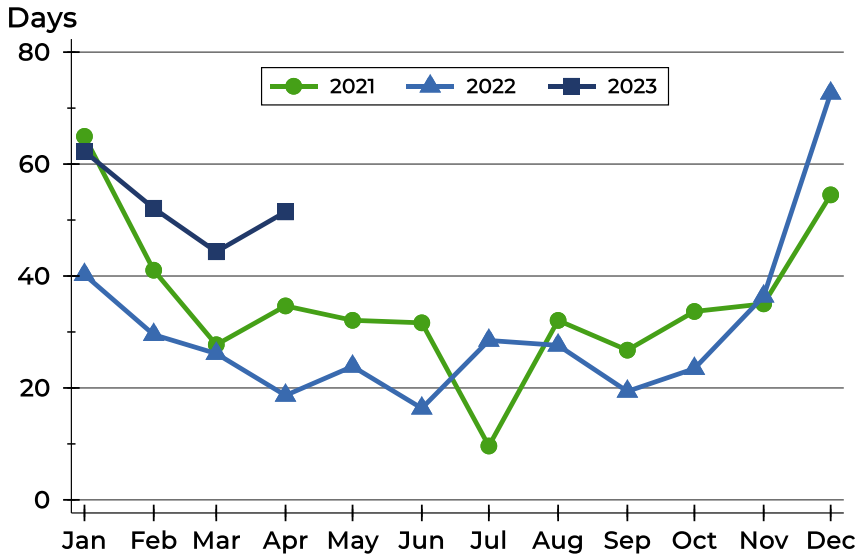


Month	2021	2022	2023
January	266,314	265,500	315,000
February	285,000	320,000	274,400
March	275,000	289,400	315,000
April	250,000	275,000	329,500
May	273,000	330,000	
June	260,000	330,000	
July	255,000	333,000	
August	281,200	337,500	
September	271,500	264,000	
October	288,500	297,500	
November	260,000	310,000	
December	278,500	337,500	



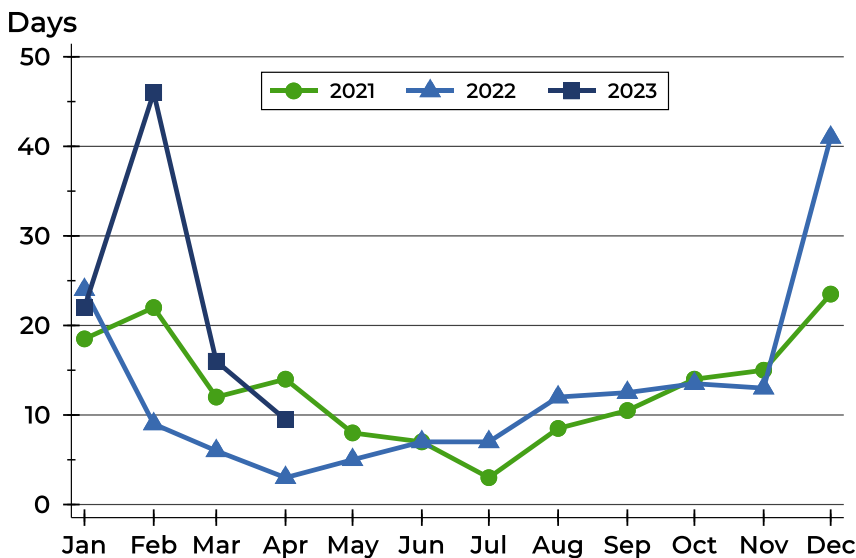
## Pottawatomie County Closed Listings Analysis

### Average DOM



Month	2021	2022	2023
January	65	40	62
February	41	30	52
March	28	26	44
April	35	19	51
May	32	24	
June	32	16	
July	10	28	
August	32	28	
September	27	19	
October	34	23	
November	35	36	
December	55	73	

### Median DOM



Month	2021	2022	2023
January	19	24	22
February	22	9	46
March	12	6	16
April	14	3	10
May	8	5	
June	7	7	
July	3	7	
August	9	12	
September	11	13	
October	14	14	
November	15	13	
December	24	41	



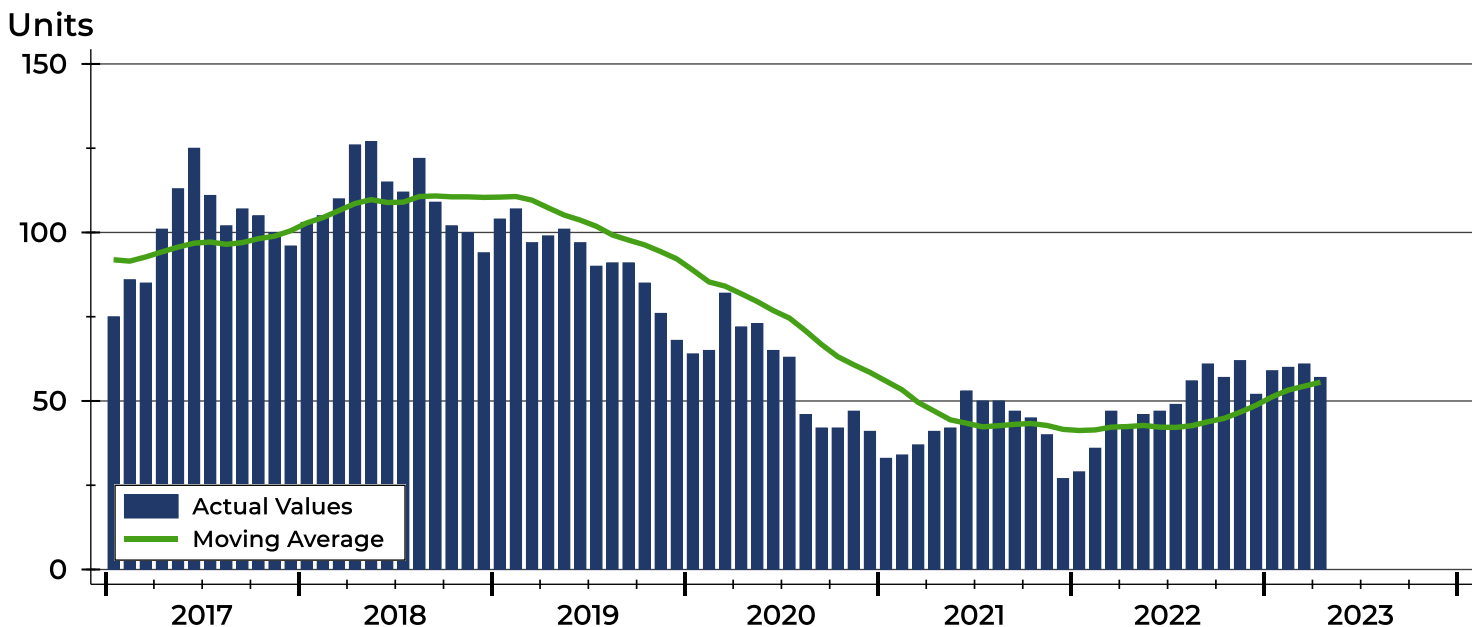
# Pottawatomie County Active Listings Analysis

Summary Statistics for Active Listings		2023	End of April 2022	Change
Active Listings		57	43	32.6%
Volume (1,000s)		22,425	15,489	44.8%
Months' Supply		2.1	1.3	61.5%
Average	List Price	393,429	360,213	9.2%
	Days on Market	81	63	28.6%
	Percent of Original	98.8%	99.4%	-0.6%
Median	List Price	364,900	385,000	-5.2%
	Days on Market	67	49	36.7%
	Percent of Original	100.0%	100.0%	0.0%

A total of 57 homes were available for sale in Pottawatomie County at the end of April. This represents a 2.1 months' supply of active listings.

The median list price of homes on the market at the end of April was \$364,900, down 5.2% from 2022. The typical time on market for active listings was 67 days, up from 49 days a year earlier.

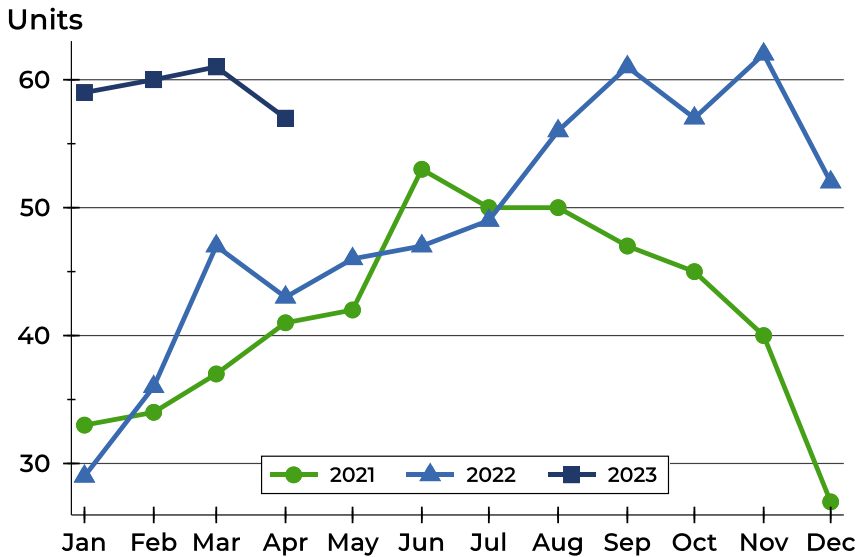
## History of Active Listings





## Pottawatomie County Active Listings Analysis

### Active Listings by Month



Month	2021	2022	2023
January	33	29	59
February	34	36	60
March	37	47	61
April	41	43	57
May	42	46	
June	53	47	
July	50	49	
August	50	56	
September	47	61	
October	45	57	
November	40	62	
December	27	52	

### Active Listings by Price Range

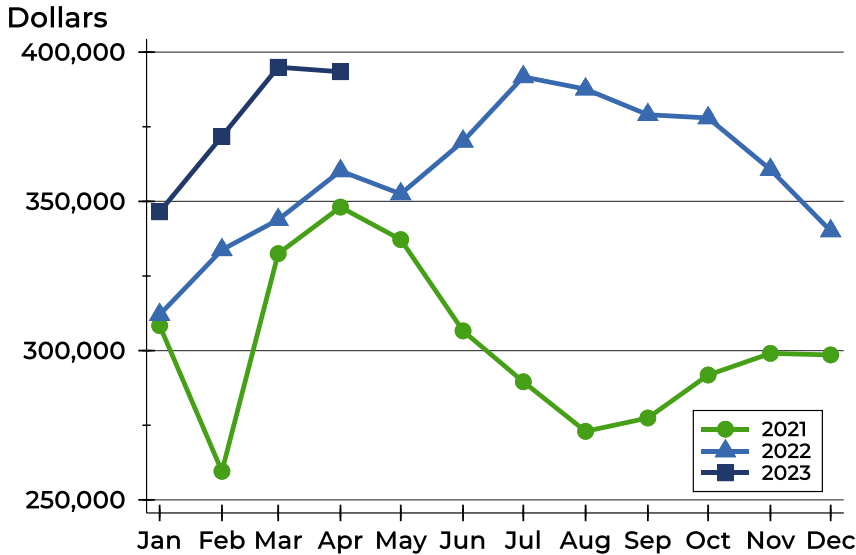
Price Range	Active Listings		Months' Supply	List Price		Days on Market		Price as % of Orig.	
	Number	Percent		Average	Median	Avg.	Med.	Avg.	Med.
Below \$25,000	0	0.0%	N/A	N/A	N/A	N/A	N/A	N/A	N/A
\$25,000-\$49,999	0	0.0%	N/A	N/A	N/A	N/A	N/A	N/A	N/A
\$50,000-\$99,999	2	3.5%	2.7	98,500	98,500	34	34	95.0%	95.0%
\$100,000-\$124,999	1	1.8%	N/A	110,000	110,000	44	44	100.0%	100.0%
\$125,000-\$149,999	1	1.8%	N/A	125,000	125,000	12	12	100.0%	100.0%
\$150,000-\$174,999	4	7.0%	4.4	165,700	166,450	44	18	100.0%	100.0%
\$175,000-\$199,999	1	1.8%	0.9	199,900	199,900	16	16	97.8%	97.8%
\$200,000-\$249,999	4	7.0%	1.2	226,625	227,000	31	30	100.0%	100.0%
\$250,000-\$299,999	6	10.5%	1.3	278,317	275,000	88	94	100.0%	100.0%
\$300,000-\$399,999	17	29.8%	1.7	357,367	360,000	121	83	97.9%	98.5%
\$400,000-\$499,999	9	15.8%	2.1	437,633	424,900	96	68	99.0%	100.0%
\$500,000-\$749,999	11	19.3%	9.4	621,857	624,500	61	68	99.2%	100.0%
\$750,000-\$999,999	0	0.0%	N/A	N/A	N/A	N/A	N/A	N/A	N/A
\$1,000,000 and up	1	1.8%	N/A	1,700,000	1,700,000	35	35	100.0%	100.0%





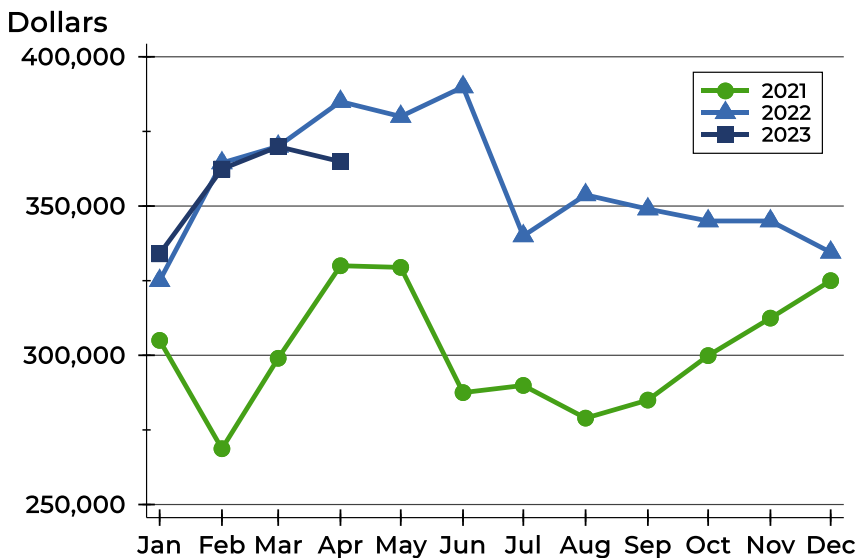
## Pottawatomie County Active Listings Analysis

### Average Price



Month	2021	2022	2023
January	308,385	312,066	346,498
February	259,565	333,767	371,789
March	332,489	343,857	394,956
April	348,095	360,213	393,429
May	337,200	352,492	
June	306,614	370,121	
July	289,574	391,716	
August	272,958	387,600	
September	277,430	379,030	
October	291,840	377,949	
November	299,078	360,668	
December	298,563	340,103	

### Median Price

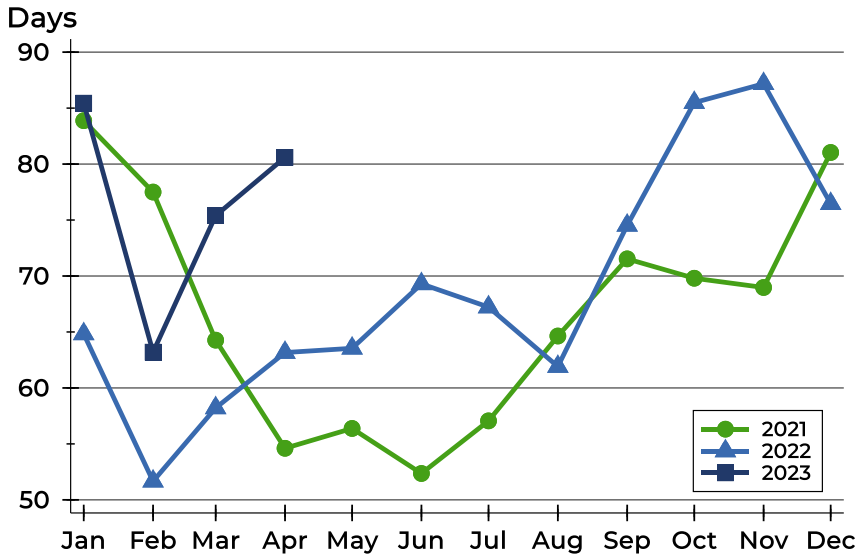


Month	2021	2022	2023
January	305,000	325,000	334,000
February	268,700	364,450	362,400
March	299,000	370,000	369,900
April	330,000	385,000	364,900
May	329,450	380,000	
June	287,500	389,900	
July	289,900	340,000	
August	278,950	353,750	
September	285,000	349,000	
October	299,900	345,000	
November	312,450	345,000	
December	325,000	334,500	



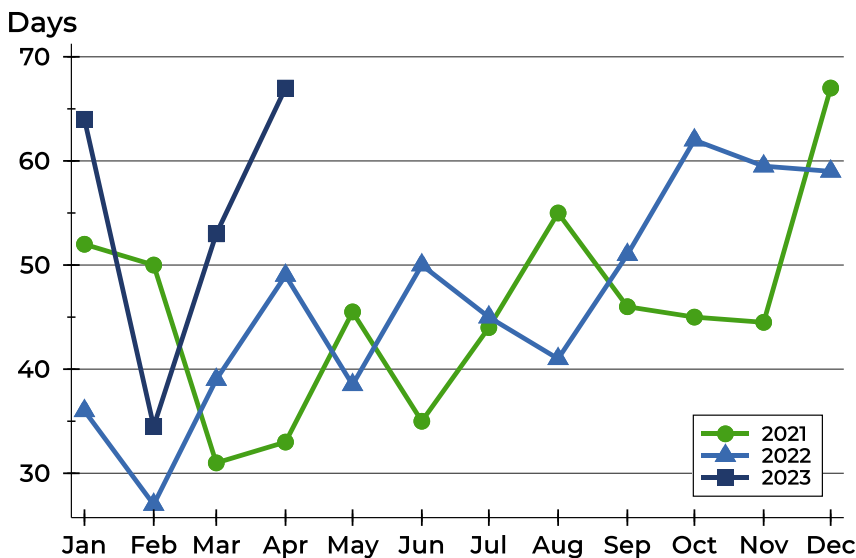
## Pottawatomie County Active Listings Analysis

### Average DOM



Month	2021	2022	2023
January	84	65	85
February	78	52	63
March	64	58	75
April	55	63	81
May	56	64	
June	52	69	
July	57	67	
August	65	62	
September	72	75	
October	70	85	
November	69	87	
December	81	76	

### Median DOM

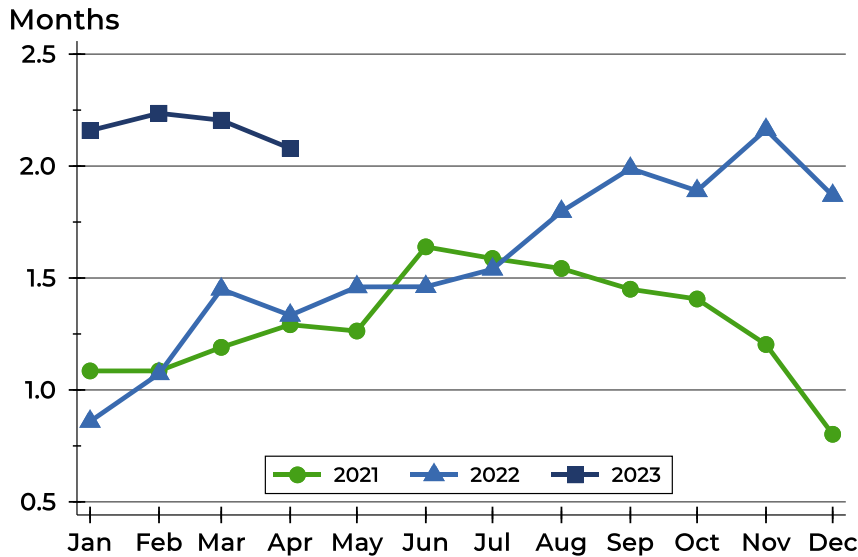


Month	2021	2022	2023
January	52	36	64
February	50	27	35
March	31	39	53
April	33	49	67
May	46	39	
June	35	50	
July	44	45	
August	55	41	
September	46	51	
October	45	62	
November	45	60	
December	67	59	



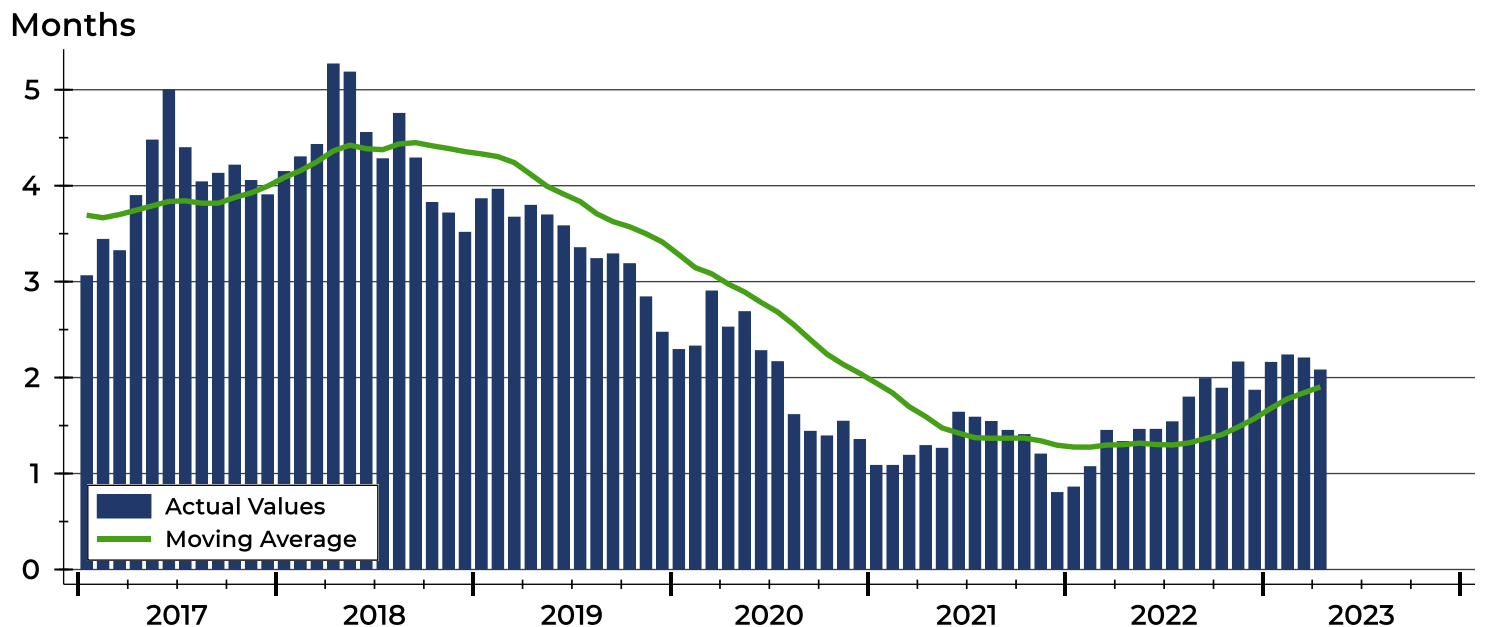
# Pottawatomie County Months' Supply Analysis

## Months' Supply by Month



Month	2021	2022	2023
January	1.1	0.9	2.2
February	1.1	1.1	2.2
March	1.2	1.4	2.2
April	1.3	1.3	2.1
May	1.3	1.5	
June	1.6	1.5	
July	1.6	1.5	
August	1.5	1.8	
September	1.4	2.0	
October	1.4	1.9	
November	1.2	2.2	
December	0.8	1.9	

## History of Month's Supply





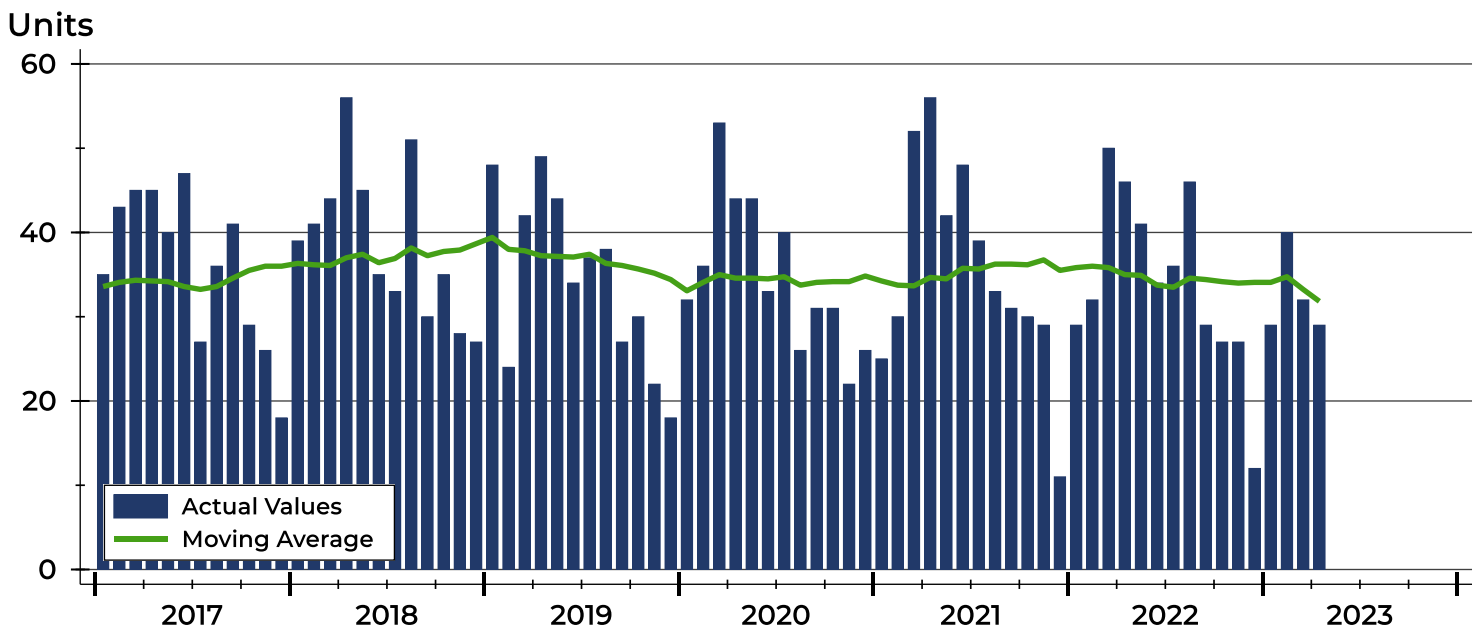
# Pottawatomie County New Listings Analysis

Summary Statistics for New Listings		2023	April 2022	Change
Current Month	New Listings	29	46	-37.0%
	Volume (1,000s)	9,903	15,771	-37.2%
	Average List Price	341,493	342,847	-0.4%
	Median List Price	349,500	339,900	2.8%
Year-to-Date	New Listings	130	157	-17.2%
	Volume (1,000s)	47,737	51,754	-7.8%
	Average List Price	367,209	329,640	11.4%
	Median List Price	349,950	332,500	5.2%

A total of 29 new listings were added in Pottawatomie County during April, down 37.0% from the same month in 2022. Year-to-date Pottawatomie County has seen 130 new listings.

The median list price of these homes was \$349,500 up from \$339,900 in 2022.

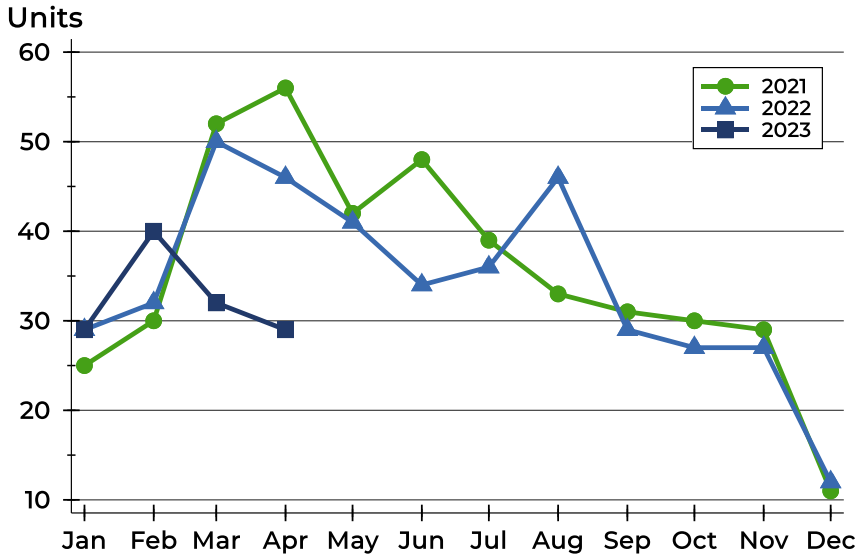
## History of New Listings





## Pottawatomie County New Listings Analysis

### New Listings by Month



Month	2021	2022	2023
January	25	29	29
February	30	32	40
March	52	50	32
April	56	46	29
May	42	41	
June	48	34	
July	39	36	
August	33	46	
September	31	29	
October	30	27	
November	29	27	
December	11	12	

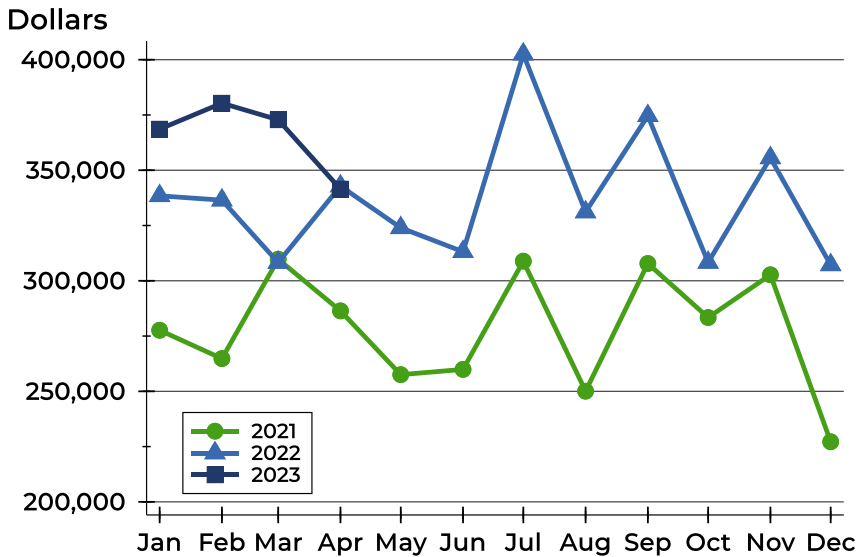
### New Listings by Price Range

Price Range	New Listings		List Price		Days on Market		Price as % of Orig.	
	Number	Percent	Average	Median	Avg.	Med.	Avg.	Med.
Below \$25,000	0	0.0%	N/A	N/A	N/A	N/A	N/A	N/A
\$25,000-\$49,999	0	0.0%	N/A	N/A	N/A	N/A	N/A	N/A
\$50,000-\$99,999	0	0.0%	N/A	N/A	N/A	N/A	N/A	N/A
\$100,000-\$124,999	0	0.0%	N/A	N/A	N/A	N/A	N/A	N/A
\$125,000-\$149,999	0	0.0%	N/A	N/A	N/A	N/A	N/A	N/A
\$150,000-\$174,999	4	13.8%	160,975	159,450	5	3	100.0%	100.0%
\$175,000-\$199,999	1	3.4%	199,900	199,900	23	23	97.8%	97.8%
\$200,000-\$249,999	2	6.9%	224,500	224,500	32	32	100.0%	100.0%
\$250,000-\$299,999	3	10.3%	287,667	289,000	12	2	100.0%	100.0%
\$300,000-\$399,999	11	37.9%	357,982	349,900	11	8	99.2%	100.0%
\$400,000-\$499,999	5	17.2%	428,980	420,000	16	17	94.9%	100.0%
\$500,000-\$749,999	3	10.3%	554,933	535,000	17	18	99.1%	100.0%
\$750,000-\$999,999	0	0.0%	N/A	N/A	N/A	N/A	N/A	N/A
\$1,000,000 and up	0	0.0%	N/A	N/A	N/A	N/A	N/A	N/A



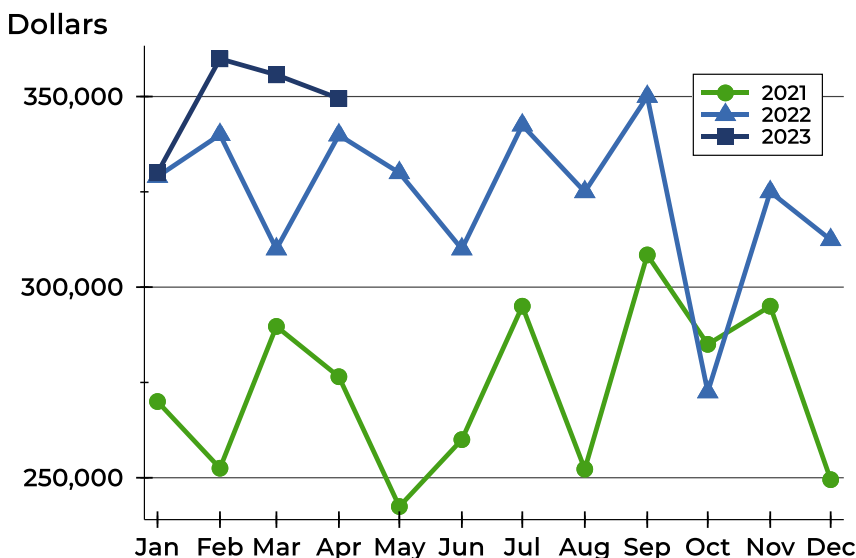
## Pottawatomie County New Listings Analysis

### Average Price



Month	2021	2022	2023
January	277,640	338,438	368,603
February	264,803	336,485	380,341
March	309,779	308,271	372,838
April	286,386	342,847	341,493
May	257,544	323,966	
June	259,931	313,151	
July	308,895	402,519	
August	250,072	331,116	
September	307,825	374,641	
October	283,383	308,297	
November	302,724	355,596	
December	227,186	307,188	

### Median Price



Month	2021	2022	2023
January	270,000	329,000	330,000
February	252,500	340,000	359,900
March	289,700	310,000	355,700
April	276,500	339,900	349,500
May	242,450	330,000	
June	260,000	310,000	
July	295,000	342,500	
August	252,250	325,000	
September	308,450	350,000	
October	285,000	272,500	
November	295,000	325,000	
December	249,500	312,425	



**April  
2023**

# Flint Hills MLS Statistics



**FLINT HILLS  
ASSOCIATION  
OF REALTORS®**

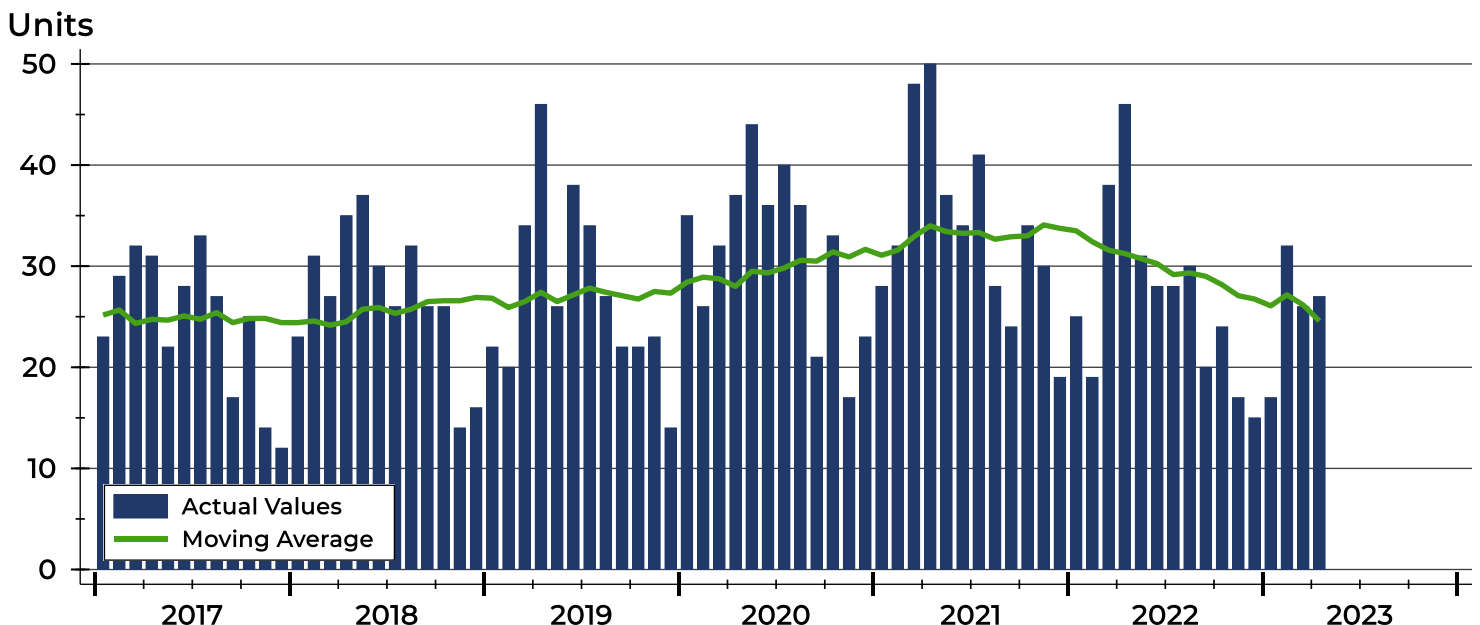
## Pottawatomie County Contracts Written Analysis

Summary Statistics for Contracts Written		2023	April 2022	Change	2023	Year-to-Date 2022	Change
Contracts Written		27	46	-41.3%	102	128	-20.3%
Volume (1,000s)		9,172	14,850	-38.2%	33,171	39,905	-16.9%
Average	Sale Price	339,696	322,826	5.2%	325,207	311,756	4.3%
	Days on Market	48	21	128.6%	48	21	128.6%
	Percent of Original	97.3%	100.5%	-3.2%	98.5%	101.0%	-2.5%
Median	Sale Price	350,000	339,450	3.1%	330,000	312,500	5.6%
	Days on Market	9	8	12.5%	16	5	220.0%
	Percent of Original	100.0%	100.0%	0.0%	100.0%	100.0%	0.0%

A total of 27 contracts for sale were written in Pottawatomie County during the month of April, down from 46 in 2022. The median list price of these homes was \$350,000, up from \$339,450 the prior year.

Half of the homes that went under contract in April were on the market less than 9 days, compared to 8 days in April 2022.

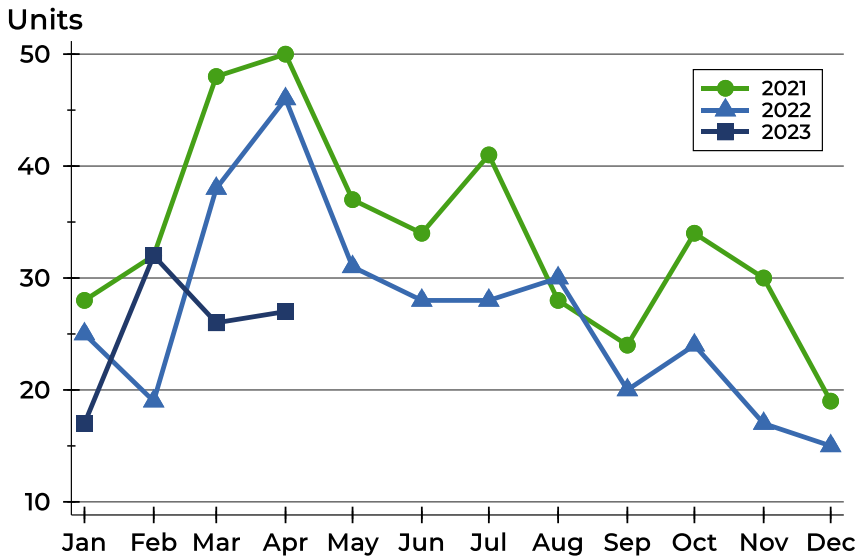
## History of Contracts Written





## Pottawatomie County Contracts Written Analysis

### Contracts Written by Month



Month	2021	2022	2023
January	28	25	17
February	32	19	32
March	48	38	26
April	50	46	27
May	37	31	
June	34	28	
July	41	28	
August	28	30	
September	24	20	
October	34	24	
November	30	17	
December	19	15	

### Contracts Written by Price Range

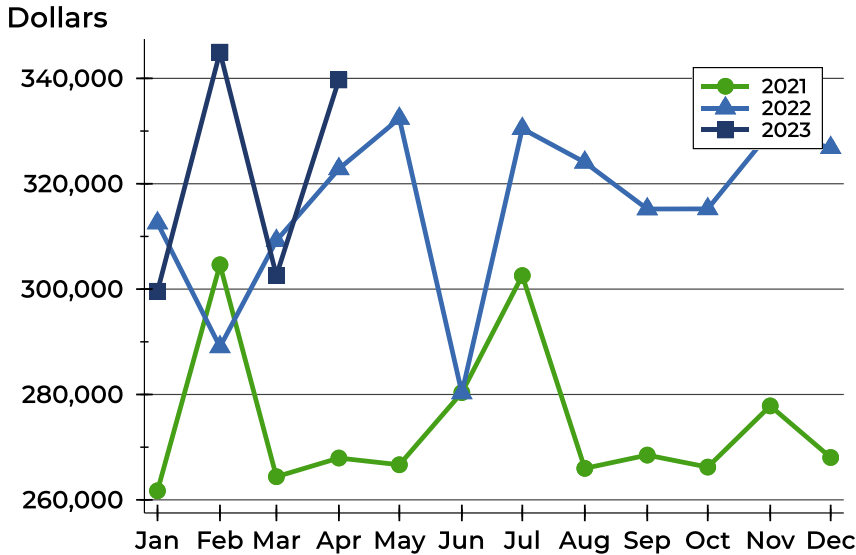
Price Range	Contracts Written		List Price		Days on Market		Price as % of Orig.	
	Number	Percent	Average	Median	Avg.	Med.	Avg.	Med.
Below \$25,000	0	0.0%	N/A	N/A	N/A	N/A	N/A	N/A
\$25,000-\$49,999	0	0.0%	N/A	N/A	N/A	N/A	N/A	N/A
\$50,000-\$99,999	0	0.0%	N/A	N/A	N/A	N/A	N/A	N/A
\$100,000-\$124,999	0	0.0%	N/A	N/A	N/A	N/A	N/A	N/A
\$125,000-\$149,999	1	3.7%	130,000	130,000	191	191	86.7%	86.7%
\$150,000-\$174,999	2	7.4%	159,450	159,450	3	3	100.0%	100.0%
\$175,000-\$199,999	1	3.7%	175,000	175,000	68	68	81.4%	81.4%
\$200,000-\$249,999	1	3.7%	200,000	200,000	156	156	88.9%	88.9%
\$250,000-\$299,999	5	18.5%	274,200	268,000	43	28	97.6%	100.0%
\$300,000-\$399,999	12	44.4%	361,842	361,950	33	14	98.6%	100.0%
\$400,000-\$499,999	2	7.4%	424,950	424,950	119	119	100.0%	100.0%
\$500,000-\$749,999	3	11.1%	594,967	599,900	4	4	100.0%	100.0%
\$750,000-\$999,999	0	0.0%	N/A	N/A	N/A	N/A	N/A	N/A
\$1,000,000 and up	0	0.0%	N/A	N/A	N/A	N/A	N/A	N/A





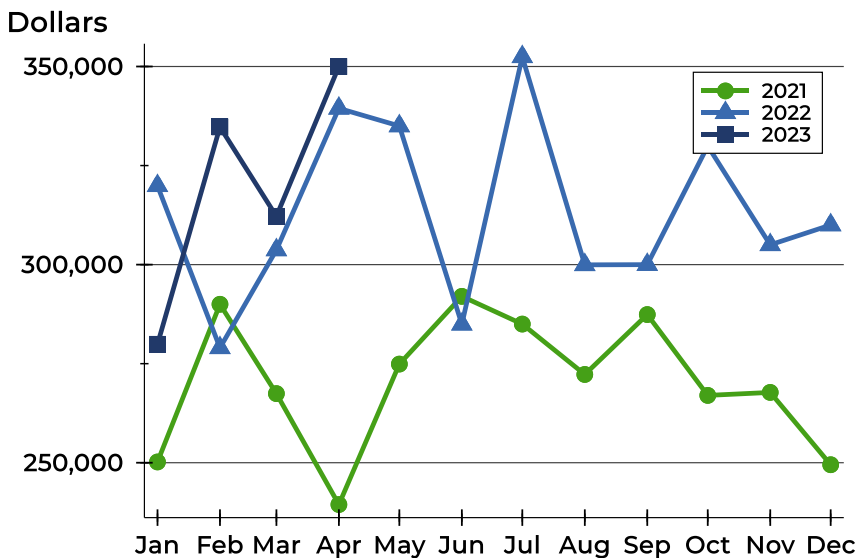
## Pottawatomie County Contracts Written Analysis

### Average Price



Month	2021	2022	2023
January	261,718	312,546	<b>299,594</b>
February	304,628	289,037	<b>344,978</b>
March	264,400	309,196	<b>302,573</b>
April	267,945	322,826	<b>339,696</b>
May	266,667	332,385	
June	280,366	280,298	
July	302,572	330,457	
August	265,977	324,068	
September	268,499	315,205	
October	266,221	315,234	
November	277,837	329,815	
December	268,045	326,840	

### Median Price

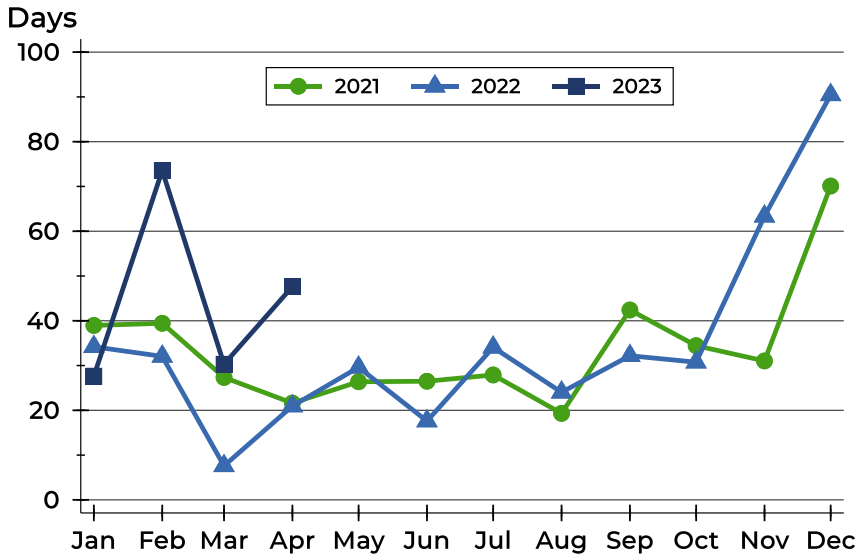


Month	2021	2022	2023
January	250,200	319,900	<b>279,900</b>
February	290,000	279,000	<b>334,750</b>
March	267,450	303,700	<b>312,200</b>
April	239,450	339,450	<b>350,000</b>
May	274,900	335,000	
June	292,000	284,950	
July	285,000	352,450	
August	272,280	299,950	
September	287,400	300,000	
October	267,000	329,950	
November	267,750	305,000	
December	249,500	310,000	



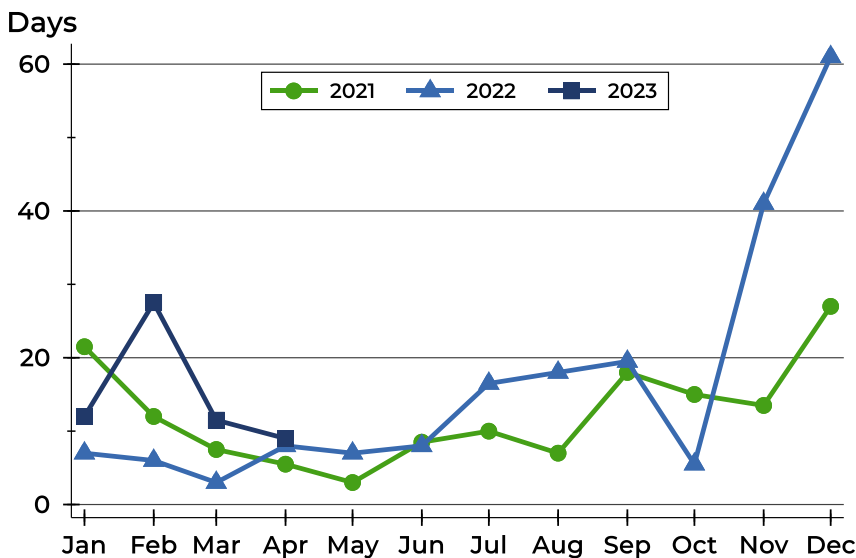
# Pottawatomie County Contracts Written Analysis

## Average DOM



Month	2021	2022	2023
January	39	34	28
February	39	32	74
March	27	8	30
April	22	21	48
May	26	30	
June	27	18	
July	28	34	
August	19	24	
September	42	32	
October	34	31	
November	31	63	
December	70	90	

## Median DOM



Month	2021	2022	2023
January	22	7	12
February	12	6	28
March	8	3	12
April	6	8	9
May	3	7	
June	9	8	
July	10	17	
August	7	18	
September	18	20	
October	15	6	
November	14	41	
December	27	61	



# Pottawatomie County Pending Contracts Analysis

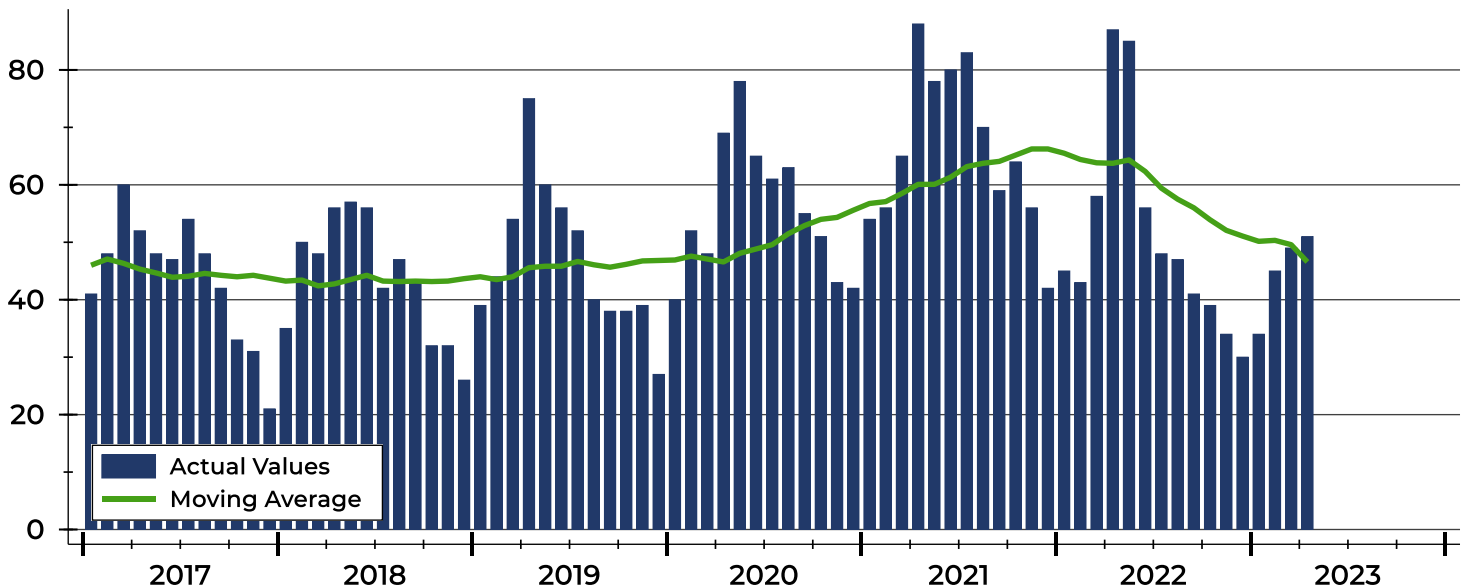
Summary Statistics for Pending Contracts		End of April		
		2023	2022	Change
Pending Contracts		51	87	-41.4%
Volume (1,000s)		16,597	27,968	-40.7%
Average	List Price	325,427	321,471	1.2%
	Days on Market	43	21	104.8%
	Percent of Original	98.9%	100.1%	-1.2%
Median	List Price	330,000	325,000	1.5%
	Days on Market	16	6	166.7%
	Percent of Original	100.0%	100.0%	0.0%

A total of 51 listings in Pottawatomie County had contracts pending at the end of April, down from 87 contracts pending at the end of April 2022.

Pending contracts reflect listings with a contract in place at the end of the month. In contrast, contracts written measures the number of listings put under contract during the month.

## History of Pending Contracts

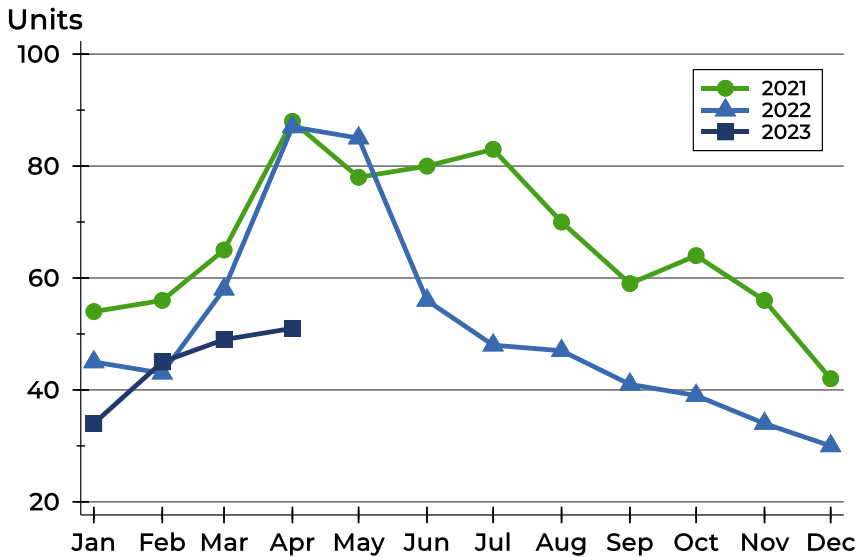
Units





## Pottawatomie County Pending Contracts Analysis

### Pending Contracts by Month



Month	2021	2022	2023
January	54	45	34
February	56	43	45
March	65	58	49
April	88	87	51
May	78	85	
June	80	56	
July	83	48	
August	70	47	
September	59	41	
October	64	39	
November	56	34	
December	42	30	

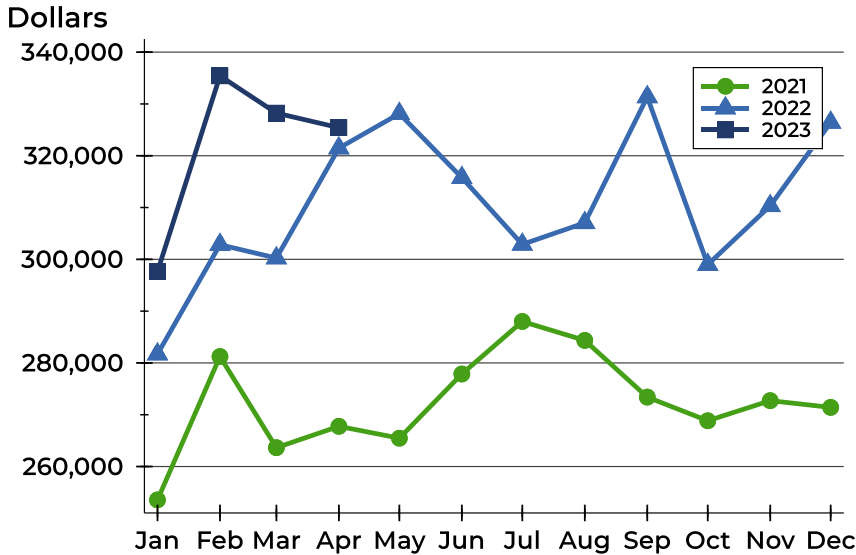
### Pending Contracts by Price Range

Price Range	Pending Contracts		List Price		Days on Market		Price as % of Orig.	
	Number	Percent	Average	Median	Avg.	Med.	Avg.	Med.
Below \$25,000	0	0.0%	N/A	N/A	N/A	N/A	N/A	N/A
\$25,000-\$49,999	0	0.0%	N/A	N/A	N/A	N/A	N/A	N/A
\$50,000-\$99,999	0	0.0%	N/A	N/A	N/A	N/A	N/A	N/A
\$100,000-\$124,999	1	2.0%	105,000	105,000	13	13	100.0%	100.0%
\$125,000-\$149,999	1	2.0%	130,000	130,000	191	191	86.7%	86.7%
\$150,000-\$174,999	2	3.9%	159,450	159,450	3	3	100.0%	100.0%
\$175,000-\$199,999	1	2.0%	175,000	175,000	68	68	81.4%	81.4%
\$200,000-\$249,999	7	13.7%	231,329	239,900	43	31	98.4%	100.0%
\$250,000-\$299,999	10	19.6%	275,640	268,750	40	22	101.1%	100.0%
\$300,000-\$399,999	20	39.2%	356,180	354,950	35	14	98.8%	100.0%
\$400,000-\$499,999	6	11.8%	430,617	429,900	84	45	100.0%	100.0%
\$500,000-\$749,999	3	5.9%	594,967	599,900	4	4	100.0%	100.0%
\$750,000-\$999,999	0	0.0%	N/A	N/A	N/A	N/A	N/A	N/A
\$1,000,000 and up	0	0.0%	N/A	N/A	N/A	N/A	N/A	N/A



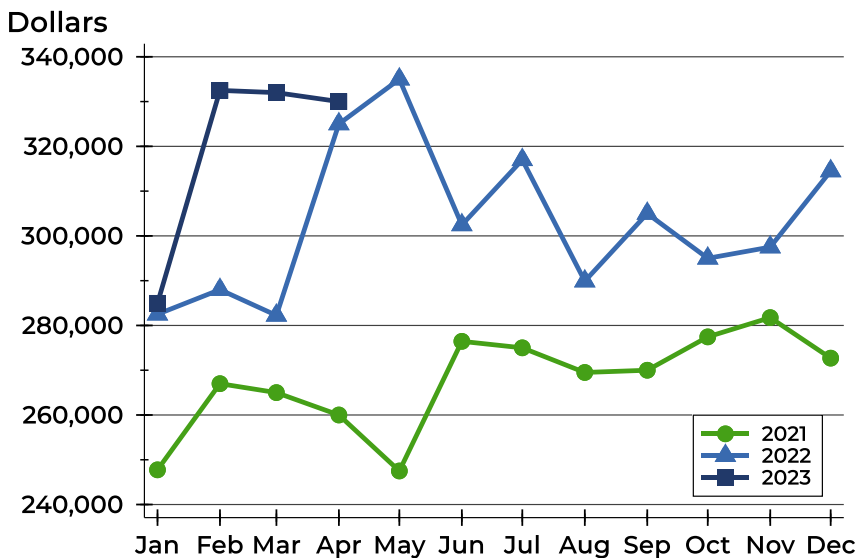
## Pottawatomie County Pending Contracts Analysis

### Average Price



Month	2021	2022	2023
January	253,565	281,700	297,634
February	281,241	302,832	335,418
March	263,641	300,248	328,237
April	267,766	321,471	325,427
May	265,473	328,125	
June	277,862	315,771	
July	288,006	302,886	
August	284,350	307,048	
September	273,403	331,346	
October	268,839	298,977	
November	272,718	310,334	
December	271,423	326,423	

### Median Price

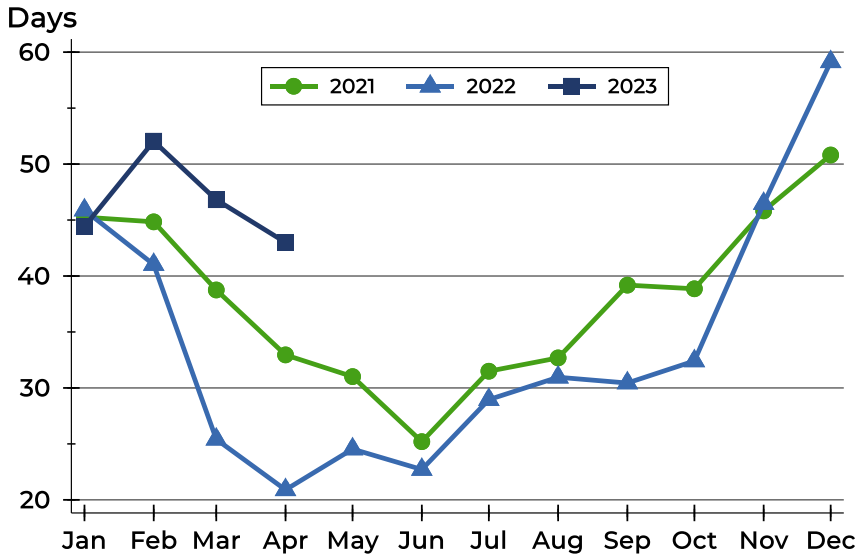


Month	2021	2022	2023
January	247,750	282,500	284,950
February	267,000	288,000	332,500
March	265,000	282,250	332,000
April	260,000	325,000	330,000
May	247,500	335,000	
June	276,450	302,450	
July	275,000	317,000	
August	269,500	289,900	
September	270,000	305,000	
October	277,450	295,000	
November	281,750	297,500	
December	272,700	314,500	



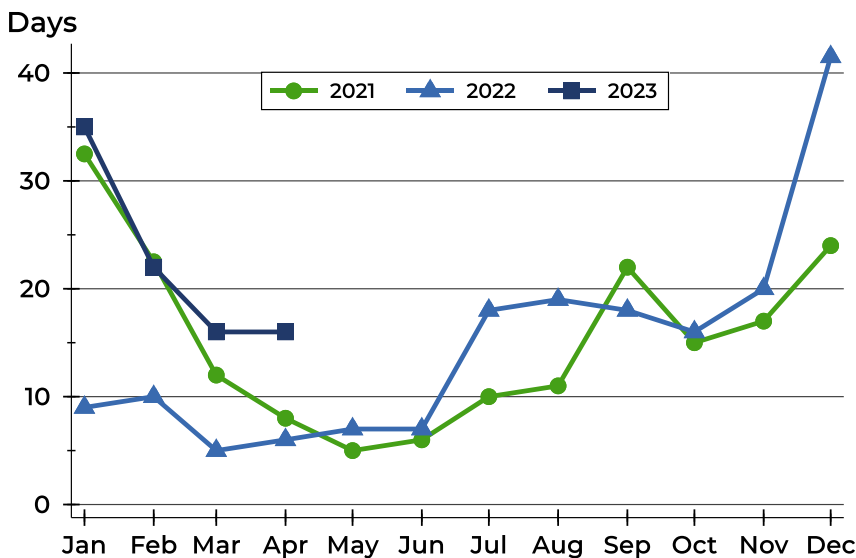
## Pottawatomie County Pending Contracts Analysis

### Average DOM



Month	2021	2022	2023
January	45	46	44
February	45	41	52
March	39	25	47
April	33	21	43
May	31	25	
June	25	23	
July	31	29	
August	33	31	
September	39	30	
October	39	32	
November	46	46	
December	51	59	

### Median DOM



Month	2021	2022	2023
January	33	9	35
February	23	10	22
March	12	5	16
April	8	6	16
May	5	7	
June	6	7	
July	10	18	
August	11	19	
September	22	18	
October	15	16	
November	17	20	
December	24	42	