

Pottawatomie County Housing Report



Market Overview

Pottawatomie County Home Sales Fell in July

Total home sales in Pottawatomie County fell last month to 30 units, compared to 31 units in July 2022. Total sales volume was \$9.0 million, down from a year earlier.

The median sale price in July was \$316,563, down from \$333,000 a year earlier. Homes that sold in July were typically on the market for 7 days and sold for 100.0% of their list prices.

Pottawatomie County Active Listings Up at End of July

The total number of active listings in Pottawatomie County at the end of July was 51 units, up from 49 at the same point in 2022. This represents a 2.1 months' supply of homes available for sale. The median list price of homes on the market at the end of July was \$375,000.

During July, a total of 31 contracts were written up from 28 in July 2022. At the end of the month, there were 52 contracts still pending.

Report Contents

- Summary Statistics – Page 2
- Closed Listing Analysis – Page 3
- Active Listings Analysis – Page 7
- Months' Supply Analysis – Page 11
- New Listings Analysis – Page 12
- Contracts Written Analysis – Page 15
- Pending Contracts Analysis – Page 19

Contact Information

Margaret Pendleton, Association Executive
 Flint Hills Association of REALTORS®
 205 S. Seth Child Road
 Manhattan, KS 66502
 785-776-1203
ae@flinthillsrealtors.net
www.flinthillsrealtors.net



**July
2023**

Flint Hills MLS Statistics



**FLINT HILLS
ASSOCIATION
OF REALTORS®**

Pottawatomie County Summary Statistics

July MLS Statistics Three-year History		Current Month			Year-to-Date		
		2023	2022	2021	2023	2022	2021
Home Sales		30	31	35	168	207	229
Change from prior year		-3.2%	-11.4%	-22.2%	-18.8%	-9.6%	7.0%
Active Listings		51	49	50	N/A	N/A	N/A
Change from prior year		4.1%	-2.0%	-20.6%			
Months' Supply		2.1	1.5	1.6	N/A	N/A	N/A
Change from prior year		40.0%	-6.3%	-27.3%			
New Listings		27	36	39	225	268	292
Change from prior year		-25.0%	-7.7%	-2.5%	-16.0%	-8.2%	3.5%
Contracts Written		31	28	41	190	215	270
Change from prior year		10.7%	-31.7%	2.5%	-11.6%	-20.4%	8.0%
Pending Contracts		52	48	83	N/A	N/A	N/A
Change from prior year		8.3%	-42.2%	36.1%			
Sales Volume (1,000s)		8,978	10,678	9,514	54,145	64,359	61,500
Change from prior year		-15.9%	12.2%	-14.7%	-15.9%	4.6%	14.8%
Average	Sale Price	299,273	344,468	271,821	322,291	310,912	268,561
	Change from prior year	-13.1%	26.7%	9.7%	3.7%	15.8%	7.3%
	List Price of Actives	425,723	391,716	289,574	N/A	N/A	N/A
	Change from prior year	8.7%	35.3%	5.6%			
	Days on Market	28	28	10	48	25	32
Change from prior year	0.0%	180.0%	-60.0%	92.0%	-21.9%	-37.3%	
Percent of List	99.6%	100.9%	101.3%	99.6%	100.9%	100.0%	
Change from prior year	-1.3%	-0.4%	3.2%	-1.3%	0.9%	1.3%	
Percent of Original	99.1%	100.3%	101.3%	98.1%	100.4%	99.2%	
Change from prior year	-1.2%	-1.0%	4.1%	-2.3%	1.2%	2.1%	
Median	Sale Price	316,563	333,000	255,000	325,000	315,000	268,000
	Change from prior year	-4.9%	30.6%	-1.2%	3.2%	17.5%	11.1%
	List Price of Actives	375,000	340,000	289,900	N/A	N/A	N/A
	Change from prior year	10.3%	17.3%	12.4%			
	Days on Market	7	7	3	16	6	8
Change from prior year	0.0%	133.3%	-82.4%	166.7%	-25.0%	-65.2%	
Percent of List	100.0%	100.0%	100.0%	100.0%	100.0%	100.0%	
Change from prior year	0.0%	0.0%	0.5%	0.0%	0.0%	0.5%	
Percent of Original	99.9%	100.0%	100.0%	100.0%	100.0%	100.0%	
Change from prior year	-0.1%	0.0%	0.6%	0.0%	0.0%	1.2%	

Note: Year-to-date statistics cannot be calculated for Active Listings, Months' Supply and Pending Contracts.



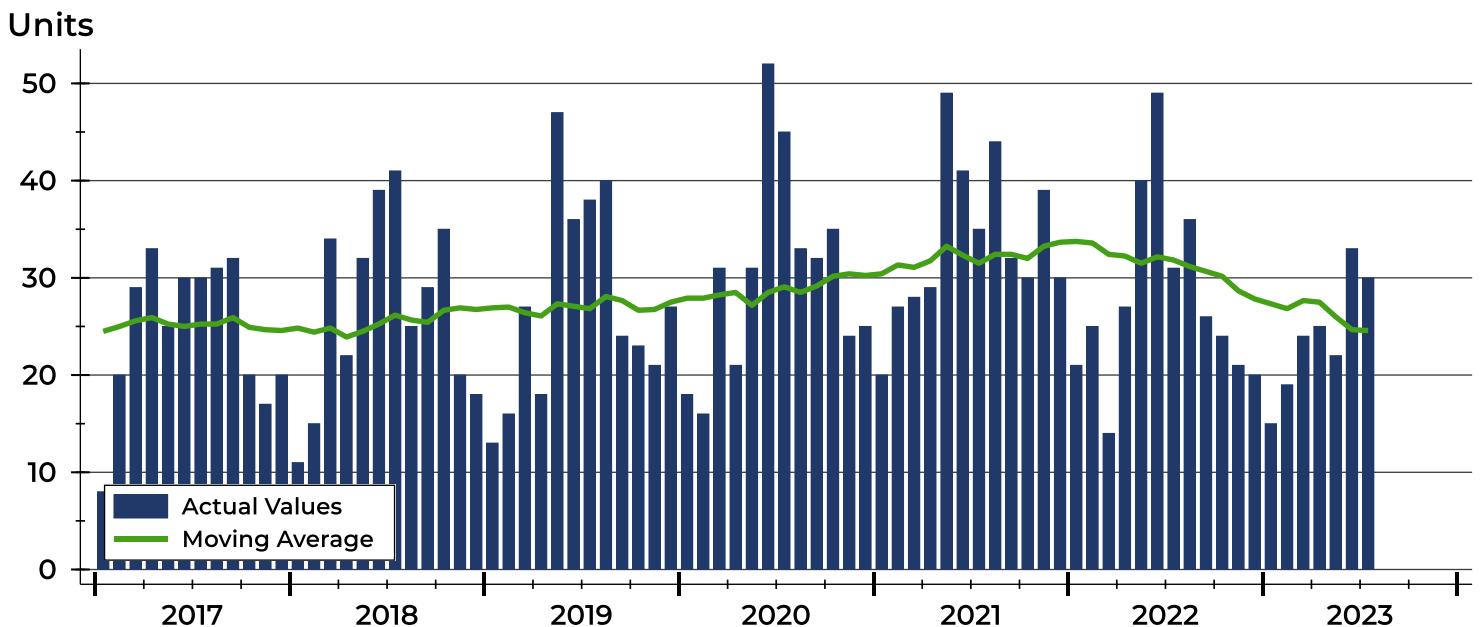
Pottawatomie County Closed Listings Analysis

Summary Statistics for Closed Listings		2023	July 2022	Change	2023	Year-to-Date 2022	Change
Closed Listings		30	31	-3.2%	168	207	-18.8%
Volume (1,000s)		8,978	10,678	-15.9%	54,145	64,359	-15.9%
Months' Supply		2.1	1.5	40.0%	N/A	N/A	N/A
Average	Sale Price	299,273	344,468	-13.1%	322,291	310,912	3.7%
	Days on Market	28	28	0.0%	48	25	92.0%
	Percent of List	99.6%	100.9%	-1.3%	99.6%	100.9%	-1.3%
	Percent of Original	99.1%	100.3%	-1.2%	98.1%	100.4%	-2.3%
Median	Sale Price	316,563	333,000	-4.9%	325,000	315,000	3.2%
	Days on Market	7	7	0.0%	16	6	166.7%
	Percent of List	100.0%	100.0%	0.0%	100.0%	100.0%	0.0%
	Percent of Original	99.9%	100.0%	-0.1%	100.0%	100.0%	0.0%

A total of 30 homes sold in Pottawatomie County in July, down from 31 units in July 2022. Total sales volume fell to \$9.0 million compared to \$10.7 million in the previous year.

The median sales price in July was \$316,563, down 4.9% compared to the prior year. Median days on market was 7 days, down from 26 days in June, and down from 7 in July 2022.

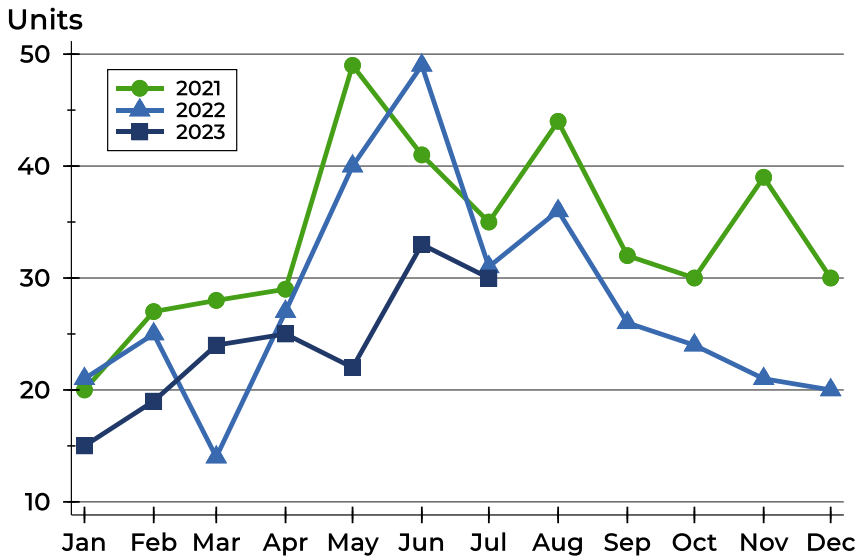
History of Closed Listings





Pottawatomie County Closed Listings Analysis

Closed Listings by Month



Month	2021	2022	2023
January	20	21	15
February	27	25	19
March	28	14	24
April	29	27	25
May	49	40	22
June	41	49	33
July	35	31	30
August	44	36	30
September	32	26	30
October	30	24	30
November	39	21	30
December	30	20	30

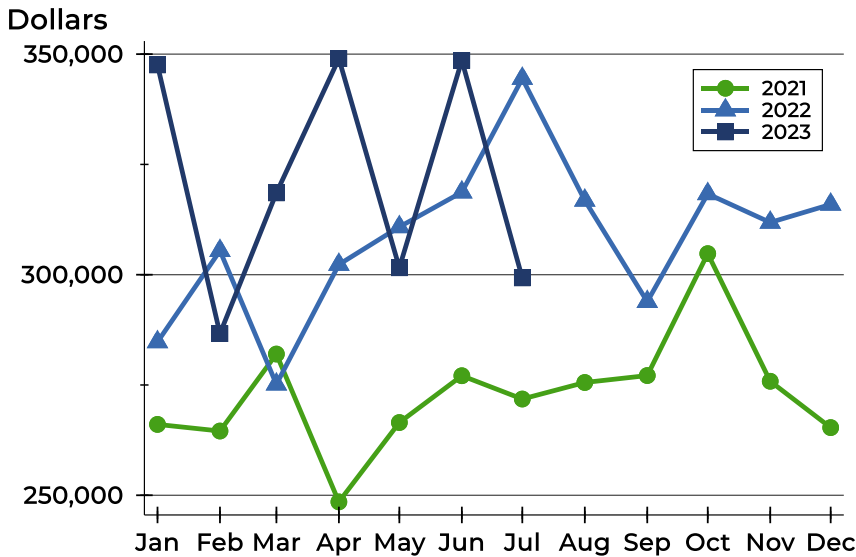
Closed Listings by Price Range

Price Range	Sales		Months' Supply	Sale Price		Days on Market		Price as % of List		Price as % of Orig.	
	Number	Percent		Average	Median	Avg.	Med.	Avg.	Med.	Avg.	Med.
Below \$25,000	0	0.0%	N/A	N/A	N/A	N/A	N/A	N/A	N/A	N/A	N/A
\$25,000-\$49,999	0	0.0%	N/A	N/A	N/A	N/A	N/A	N/A	N/A	N/A	N/A
\$50,000-\$99,999	1	3.3%	3.4	95,000	95,000	81	81	96.9%	96.9%	96.9%	96.9%
\$100,000-\$124,999	0	0.0%	N/A	N/A	N/A	N/A	N/A	N/A	N/A	N/A	N/A
\$125,000-\$149,999	3	10.0%	1.2	141,633	144,000	5	6	103.4%	103.6%	103.4%	103.6%
\$150,000-\$174,999	1	3.3%	1.6	162,250	162,250	3	3	104.7%	104.7%	104.7%	104.7%
\$175,000-\$199,999	2	6.7%	0.0	187,000	187,000	17	17	91.5%	91.5%	91.5%	91.5%
\$200,000-\$249,999	0	0.0%	1.0	N/A	N/A	N/A	N/A	N/A	N/A	N/A	N/A
\$250,000-\$299,999	6	20.0%	1.0	268,167	265,000	36	9	100.4%	100.2%	100.4%	100.2%
\$300,000-\$399,999	14	46.7%	1.6	341,645	338,750	33	10	99.6%	100.0%	98.8%	99.0%
\$400,000-\$499,999	1	3.3%	3.2	447,000	447,000	1	1	99.8%	99.8%	99.8%	99.8%
\$500,000-\$749,999	2	6.7%	6.7	541,500	541,500	23	23	98.1%	98.1%	96.9%	96.9%
\$750,000-\$999,999	0	0.0%	N/A	N/A	N/A	N/A	N/A	N/A	N/A	N/A	N/A
\$1,000,000 and up	0	0.0%	N/A	N/A	N/A	N/A	N/A	N/A	N/A	N/A	N/A



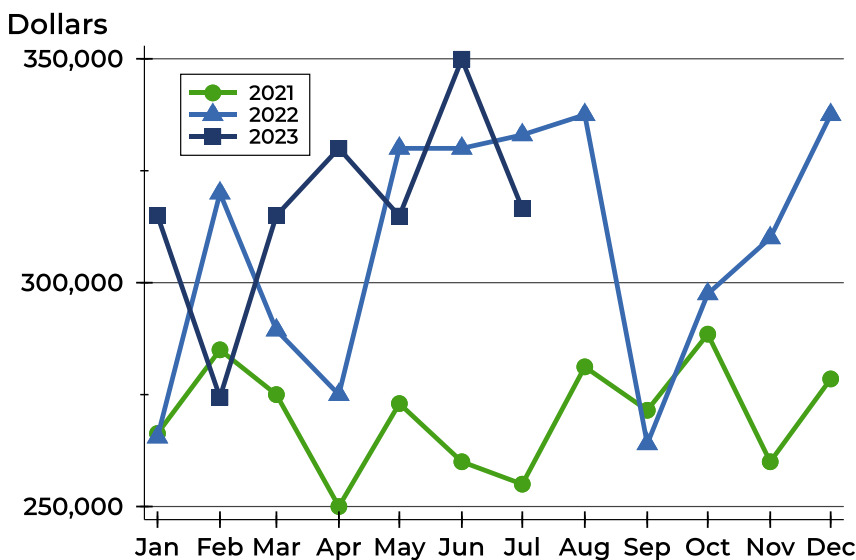
Pottawatomie County Closed Listings Analysis

Average Price



Month	2021	2022	2023
January	266,064	284,752	347,548
February	264,562	305,443	286,647
March	282,018	275,167	318,546
April	248,504	302,308	348,976
May	266,490	310,831	301,576
June	277,099	318,706	348,576
July	271,821	344,468	299,273
August	275,567	316,847	
September	277,140	293,881	
October	304,775	318,325	
November	275,848	311,843	
December	265,343	315,935	

Median Price

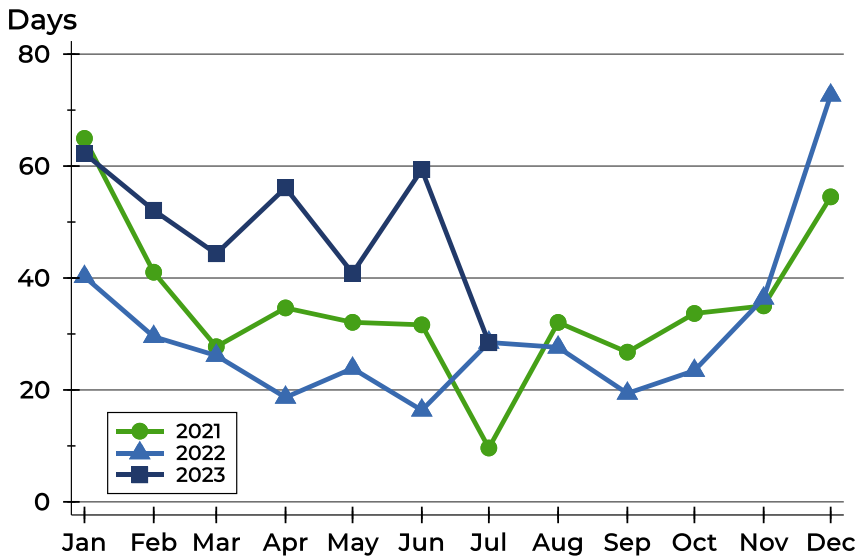


Month	2021	2022	2023
January	266,314	265,500	315,000
February	285,000	320,000	274,400
March	275,000	289,400	315,000
April	250,000	275,000	330,000
May	273,000	330,000	314,875
June	260,000	330,000	349,900
July	255,000	333,000	316,563
August	281,200	337,500	
September	271,500	264,000	
October	288,500	297,500	
November	260,000	310,000	
December	278,500	337,500	



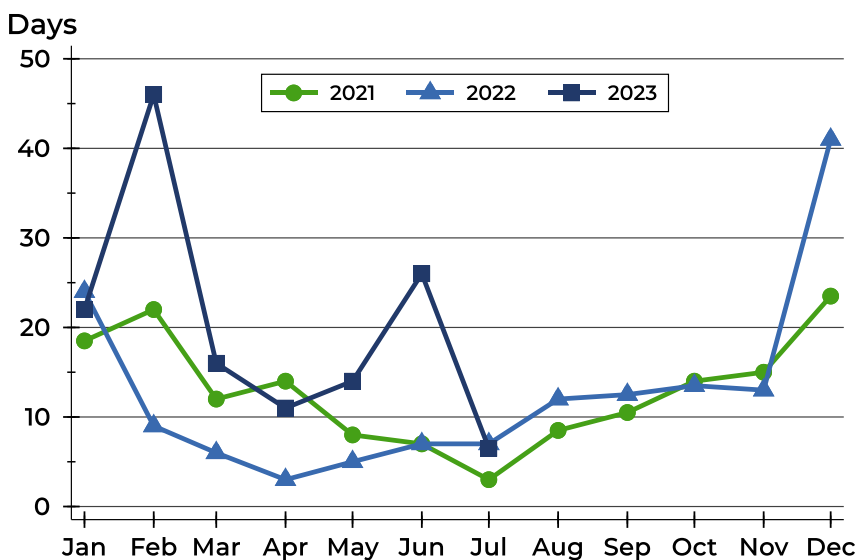
Pottawatomie County Closed Listings Analysis

Average DOM



Month	2021	2022	2023
January	65	40	62
February	41	30	52
March	28	26	44
April	35	19	56
May	32	24	41
June	32	16	59
July	10	28	28
August	32	28	
September	27	19	
October	34	23	
November	35	36	
December	55	73	

Median DOM



Month	2021	2022	2023
January	19	24	22
February	22	9	46
March	12	6	16
April	14	3	11
May	8	5	14
June	7	7	26
July	3	7	7
August	9	12	
September	11	13	
October	14	14	
November	15	13	
December	24	41	



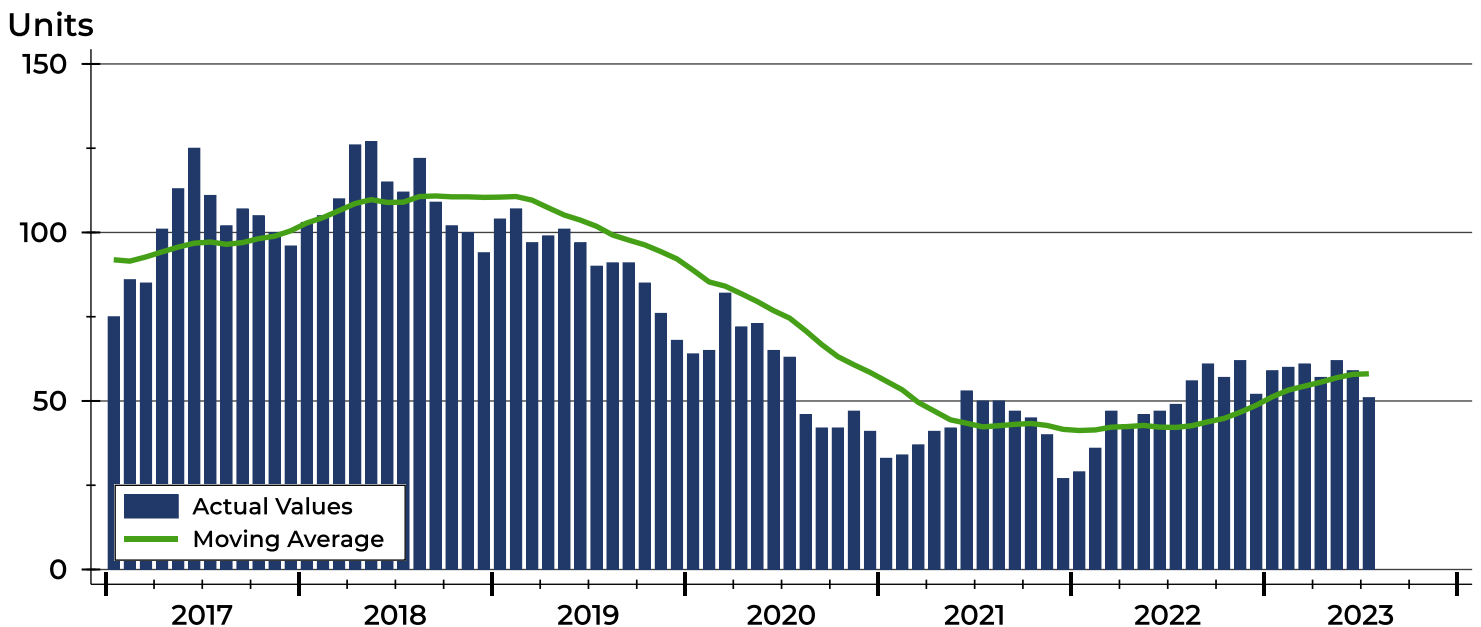
Pottawatomie County Active Listings Analysis

Summary Statistics for Active Listings		2023	End of July 2022	Change
Active Listings		51	49	4.1%
Volume (1,000s)		21,712	19,194	13.1%
Months' Supply		2.1	1.5	40.0%
Average	List Price	425,723	391,716	8.7%
	Days on Market	76	67	13.4%
	Percent of Original	98.3%	98.5%	-0.2%
Median	List Price	375,000	340,000	10.3%
	Days on Market	52	45	15.6%
	Percent of Original	100.0%	100.0%	0.0%

A total of 51 homes were available for sale in Pottawatomie County at the end of July. This represents a 2.1 months' supply of active listings.

The median list price of homes on the market at the end of July was \$375,000, up 10.3% from 2022. The typical time on market for active listings was 52 days, up from 45 days a year earlier.

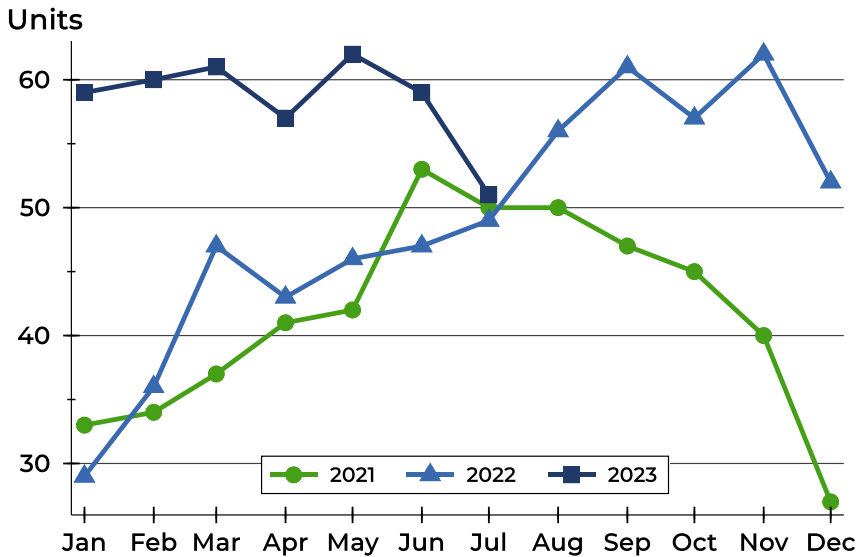
History of Active Listings





Pottawatomie County Active Listings Analysis

Active Listings by Month



Month	2021	2022	2023
January	33	29	59
February	34	36	60
March	37	47	61
April	41	43	57
May	42	46	62
June	53	47	59
July	50	49	51
August	50	56	
September	47	61	
October	45	57	
November	40	62	
December	27	52	

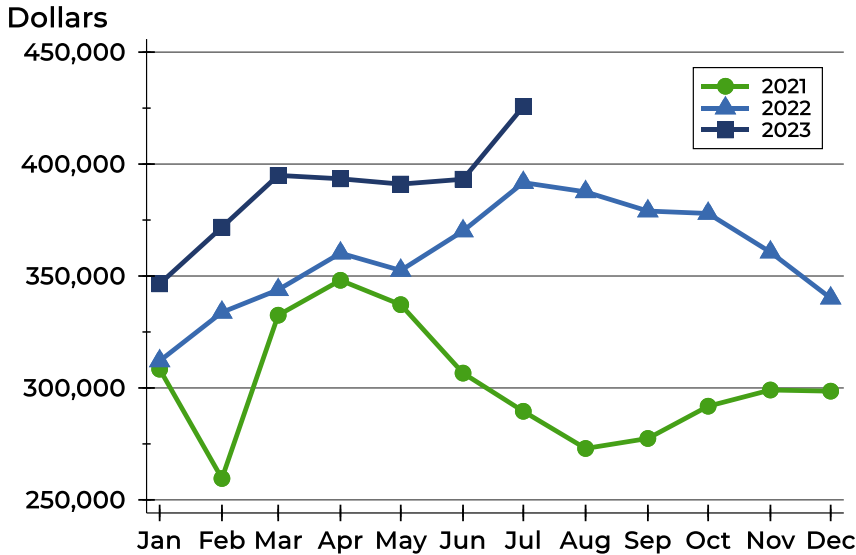
Active Listings by Price Range

Price Range	Active Listings		Months' Supply	List Price		Days on Market		Price as % of Orig.	
	Number	Percent		Average	Median	Avg.	Med.	Avg.	Med.
Below \$25,000	0	0.0%	N/A	N/A	N/A	N/A	N/A	N/A	N/A
\$25,000-\$49,999	0	0.0%	N/A	N/A	N/A	N/A	N/A	N/A	N/A
\$50,000-\$99,999	2	3.9%	3.4	84,750	84,750	43	43	100.0%	100.0%
\$100,000-\$124,999	2	3.9%	N/A	110,000	110,000	66	66	90.4%	90.4%
\$125,000-\$149,999	1	2.0%	1.2	125,000	125,000	12	12	100.0%	100.0%
\$150,000-\$174,999	2	3.9%	1.6	168,900	168,900	83	83	100.0%	100.0%
\$175,000-\$199,999	0	0.0%	0.0	N/A	N/A	N/A	N/A	N/A	N/A
\$200,000-\$249,999	3	5.9%	1.0	229,167	230,000	68	36	100.0%	100.0%
\$250,000-\$299,999	4	7.8%	1.0	282,450	284,900	77	54	96.1%	98.3%
\$300,000-\$399,999	15	29.4%	1.6	351,013	340,000	56	43	97.9%	100.0%
\$400,000-\$499,999	10	19.6%	3.2	433,980	429,950	104	77	98.6%	100.0%
\$500,000-\$749,999	9	17.6%	6.7	621,364	615,000	100	103	99.4%	100.0%
\$750,000-\$999,999	1	2.0%	N/A	895,000	895,000	7	7	100.0%	100.0%
\$1,000,000 and up	2	3.9%	N/A	1,475,000	1,475,000	83	83	100.0%	100.0%



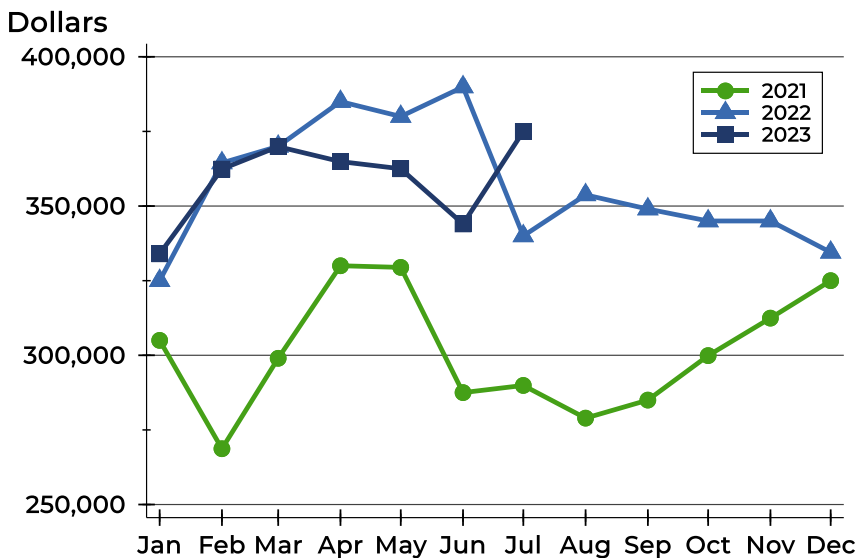
Pottawatomie County Active Listings Analysis

Average Price



Month	2021	2022	2023
January	308,385	312,066	346,498
February	259,565	333,767	371,789
March	332,489	343,857	394,956
April	348,095	360,213	393,429
May	337,200	352,492	391,065
June	306,614	370,121	393,232
July	289,574	391,716	425,723
August	272,958	387,600	
September	277,430	379,030	
October	291,840	377,949	
November	299,078	360,668	
December	298,563	340,103	

Median Price

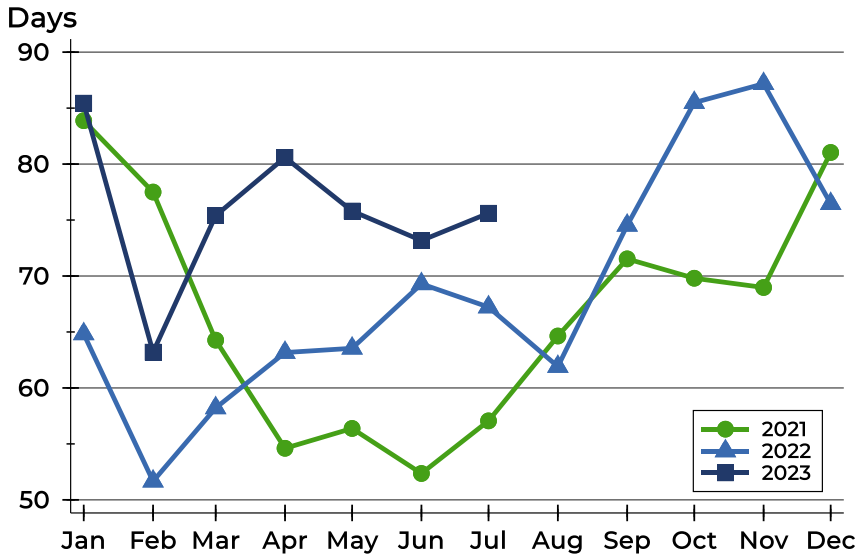


Month	2021	2022	2023
January	305,000	325,000	334,000
February	268,700	364,450	362,400
March	299,000	370,000	369,900
April	330,000	385,000	364,900
May	329,450	380,000	362,500
June	287,500	389,900	344,000
July	289,900	340,000	375,000
August	278,950	353,750	
September	285,000	349,000	
October	299,900	345,000	
November	312,450	345,000	
December	325,000	334,500	



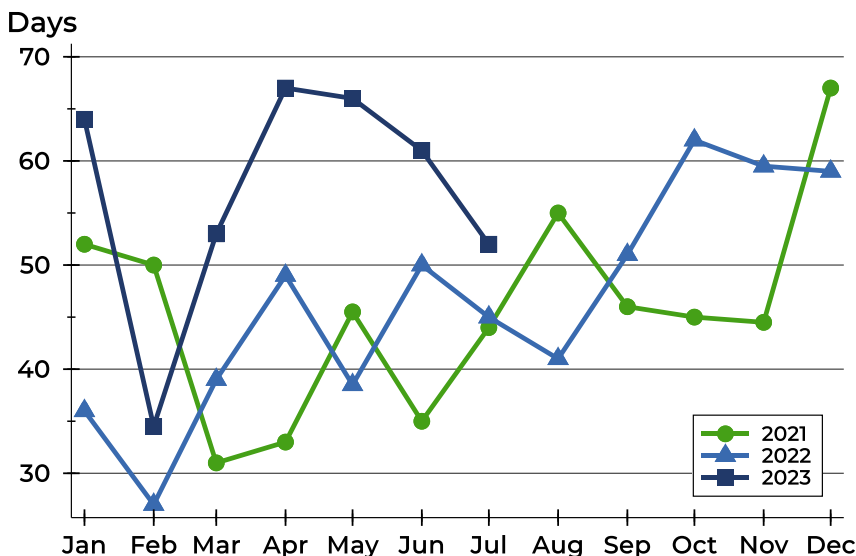
Pottawatomie County Active Listings Analysis

Average DOM



Month	2021	2022	2023
January	84	65	85
February	78	52	63
March	64	58	75
April	55	63	81
May	56	64	76
June	52	69	73
July	57	67	76
August	65	62	
September	72	75	
October	70	85	
November	69	87	
December	81	76	

Median DOM

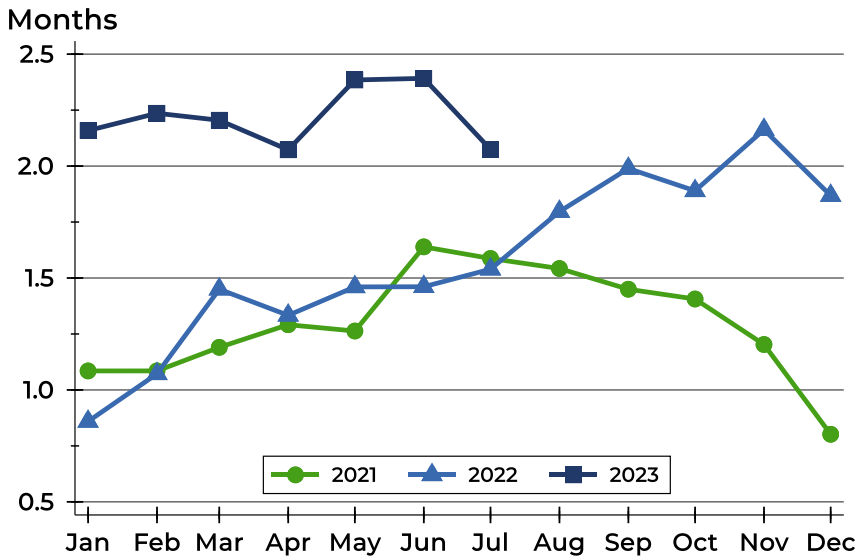


Month	2021	2022	2023
January	52	36	64
February	50	27	35
March	31	39	53
April	33	49	67
May	46	39	66
June	35	50	61
July	44	45	52
August	55	41	
September	46	51	
October	45	62	
November	45	60	
December	67	59	



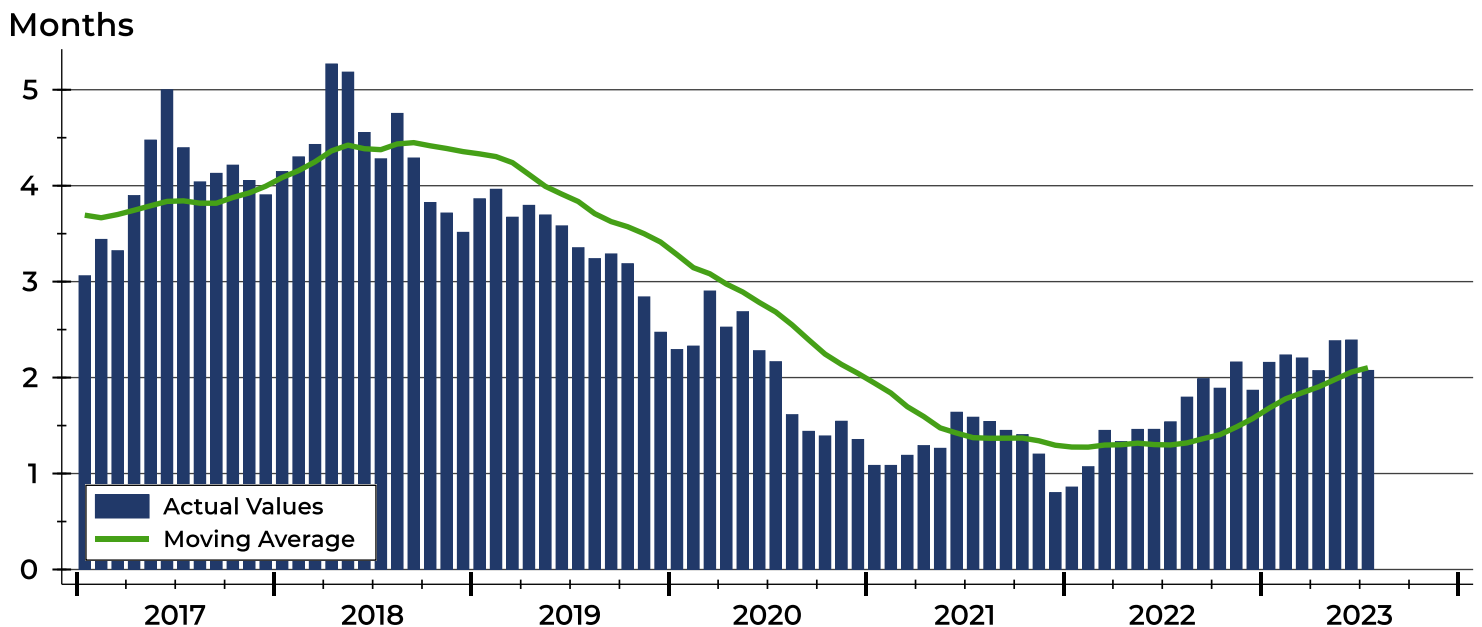
Pottawatomie County Months' Supply Analysis

Months' Supply by Month



Month	2021	2022	2023
January	1.1	0.9	2.2
February	1.1	1.1	2.2
March	1.2	1.4	2.2
April	1.3	1.3	2.1
May	1.3	1.5	2.4
June	1.6	1.5	2.4
July	1.6	1.5	2.1
August	1.5	1.8	
September	1.4	2.0	
October	1.4	1.9	
November	1.2	2.2	
December	0.8	1.9	

History of Month's Supply





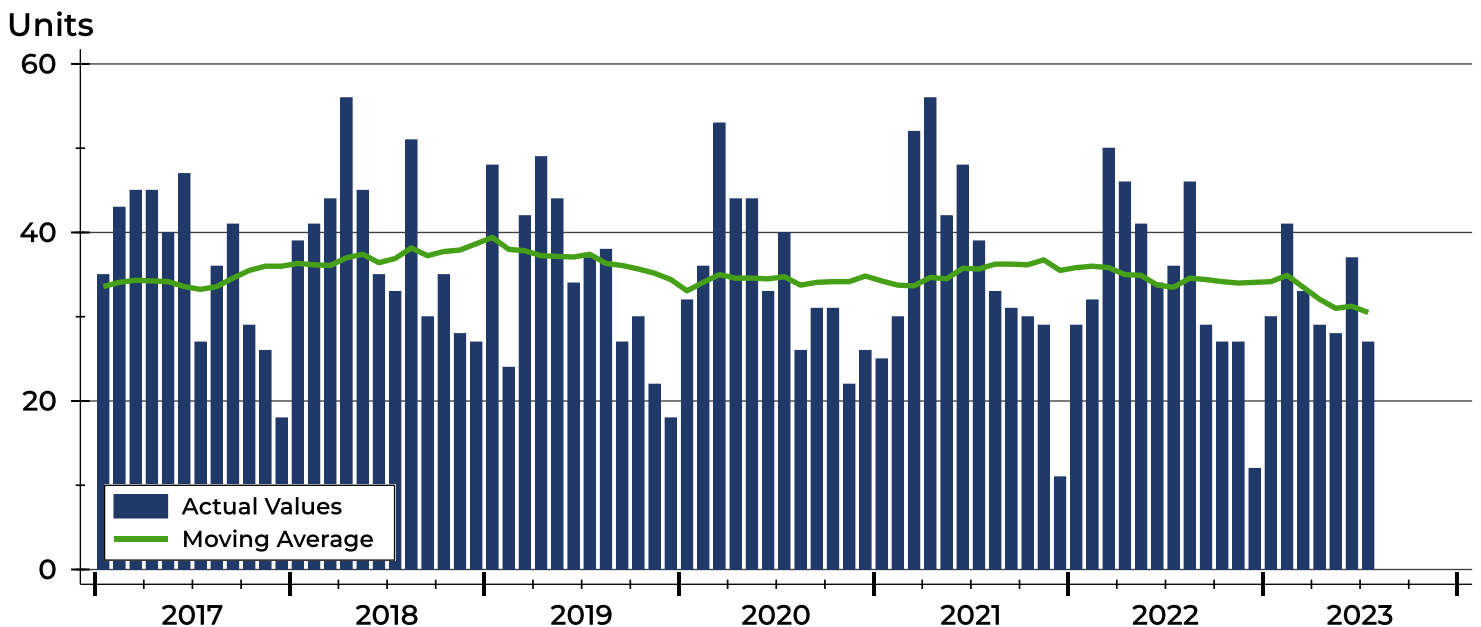
Pottawatomie County New Listings Analysis

Summary Statistics for New Listings		2023	July 2022	Change
Current Month	New Listings	27	36	-25.0%
	Volume (1,000s)	10,676	14,476	-26.3%
	Average List Price	395,389	402,103	-1.7%
	Median List Price	389,900	342,500	13.8%
Year-to-Date	New Listings	225	268	-16.0%
	Volume (1,000s)	80,599	90,166	-10.6%
	Average List Price	358,219	336,439	6.5%
	Median List Price	340,000	330,000	3.0%

A total of 27 new listings were added in Pottawatomie County during July, down 25.0% from the same month in 2022. Year-to-date Pottawatomie County has seen 225 new listings.

The median list price of these homes was \$389,900 up from \$342,500 in 2022.

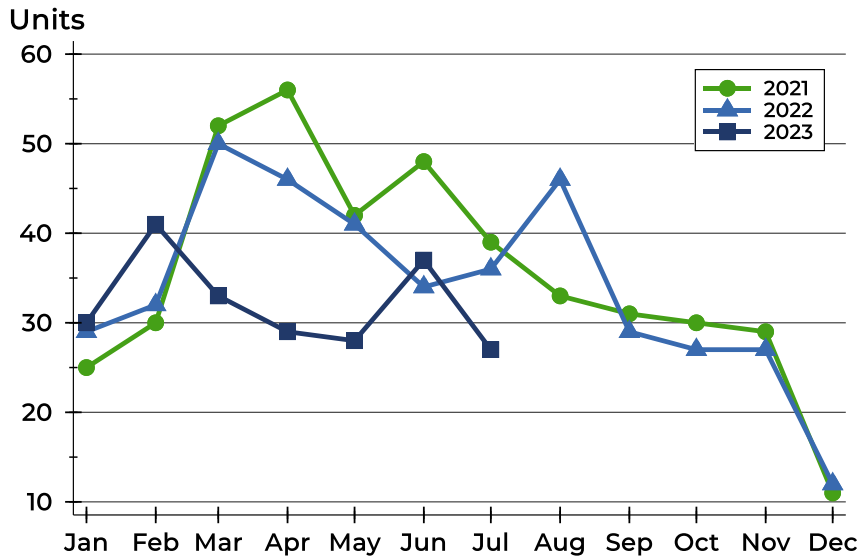
History of New Listings





Pottawatomie County New Listings Analysis

New Listings by Month



Month	2021	2022	2023
January	25	29	30
February	30	32	41
March	52	50	33
April	56	46	29
May	42	41	28
June	48	34	37
July	39	36	27
August	33	46	
September	31	29	
October	30	27	
November	29	27	
December	11	12	

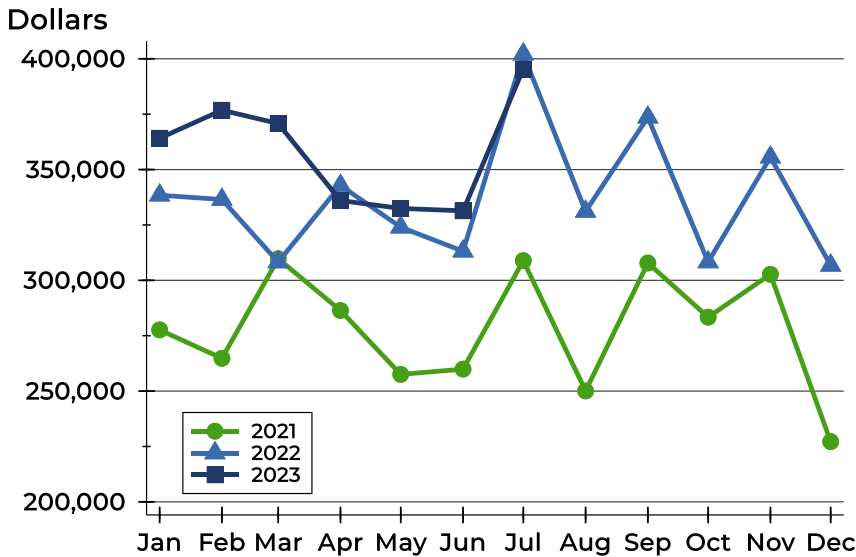
New Listings by Price Range

Price Range	New Listings		List Price		Days on Market		Price as % of Orig.	
	Number	Percent	Average	Median	Avg.	Med.	Avg.	Med.
Below \$25,000	0	0.0%	N/A	N/A	N/A	N/A	N/A	N/A
\$25,000-\$49,999	0	0.0%	N/A	N/A	N/A	N/A	N/A	N/A
\$50,000-\$99,999	0	0.0%	N/A	N/A	N/A	N/A	N/A	N/A
\$100,000-\$124,999	0	0.0%	N/A	N/A	N/A	N/A	N/A	N/A
\$125,000-\$149,999	0	0.0%	N/A	N/A	N/A	N/A	N/A	N/A
\$150,000-\$174,999	3	11.1%	162,433	159,900	3	3	100.0%	100.0%
\$175,000-\$199,999	0	0.0%	N/A	N/A	N/A	N/A	N/A	N/A
\$200,000-\$249,999	3	11.1%	221,000	225,000	2	2	100.0%	100.0%
\$250,000-\$299,999	2	7.4%	264,950	264,950	15	15	98.3%	98.3%
\$300,000-\$399,999	7	25.9%	351,543	350,000	11	11	99.8%	100.0%
\$400,000-\$499,999	6	22.2%	434,667	437,000	16	12	100.0%	100.0%
\$500,000-\$749,999	5	18.5%	606,300	579,000	9	9	100.0%	100.0%
\$750,000-\$999,999	1	3.7%	895,000	895,000	13	13	100.0%	100.0%
\$1,000,000 and up	0	0.0%	N/A	N/A	N/A	N/A	N/A	N/A



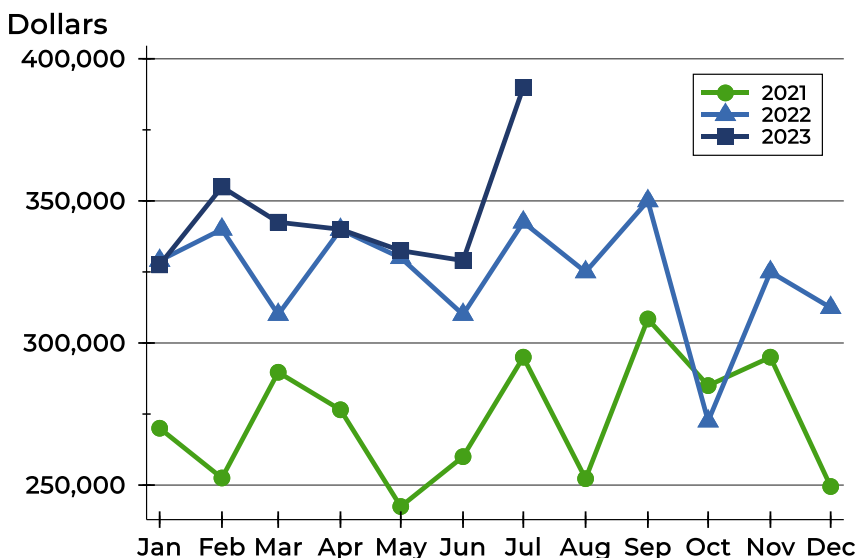
Pottawatomie County New Listings Analysis

Average Price



Month	2021	2022	2023
January	277,640	338,438	364,150
February	264,803	336,485	376,805
March	309,779	308,271	370,785
April	286,386	342,847	336,028
May	257,544	323,966	332,450
June	259,931	313,151	331,378
July	308,895	402,103	395,389
August	250,072	331,116	
September	307,825	373,607	
October	283,383	308,297	
November	302,724	355,596	
December	227,186	306,771	

Median Price



Month	2021	2022	2023
January	270,000	329,000	327,500
February	252,500	340,000	354,900
March	289,700	310,000	342,500
April	276,500	339,900	340,000
May	242,450	330,000	332,500
June	260,000	310,000	329,000
July	295,000	342,500	389,900
August	252,250	325,000	
September	308,450	350,000	
October	285,000	272,500	
November	295,000	325,000	
December	249,500	312,425	



July
2023

Flint Hills MLS Statistics



FLINT HILLS
ASSOCIATION
OF REALTORS®

Pottawatomie County Contracts Written Analysis

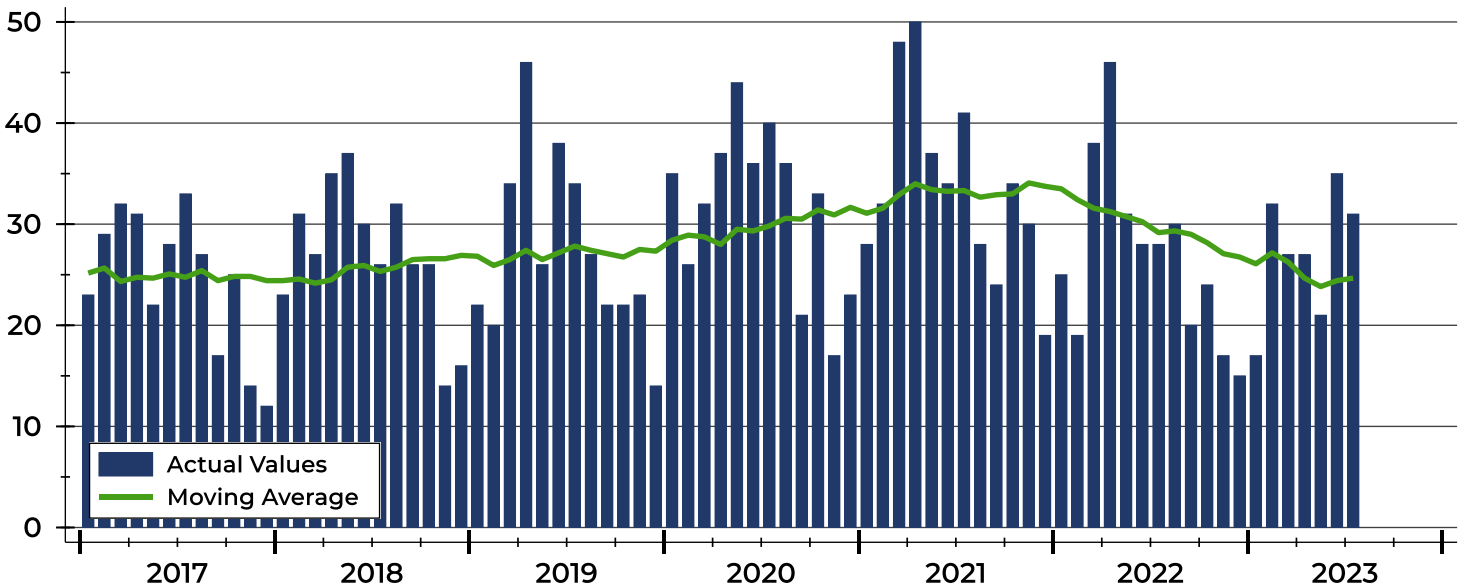
Summary Statistics for Contracts Written		2023	July 2022	Change	Year-to-Date		
		2023	2022		2023	2022	Change
Contracts Written		31	28	10.7%	190	215	-11.6%
Volume (1,000s)		9,990	9,253	8.0%	61,437	67,310	-8.7%
Average	Sale Price	322,258	330,457	-2.5%	323,352	313,069	3.3%
	Days on Market	53	34	55.9%	47	24	95.8%
	Percent of Original	96.1%	97.9%	-1.8%	98.1%	100.4%	-2.3%
Median	Sale Price	302,000	352,450	-14.3%	330,000	320,000	3.1%
	Days on Market	13	17	-23.5%	14	6	133.3%
	Percent of Original	100.0%	97.8%	2.2%	100.0%	100.0%	0.0%

A total of 31 contracts for sale were written in Pottawatomie County during the month of July, up from 28 in 2022. The median list price of these homes was \$302,000, down from \$352,450 the prior year.

Half of the homes that went under contract in July were on the market less than 13 days, compared to 17 days in July 2022.

History of Contracts Written

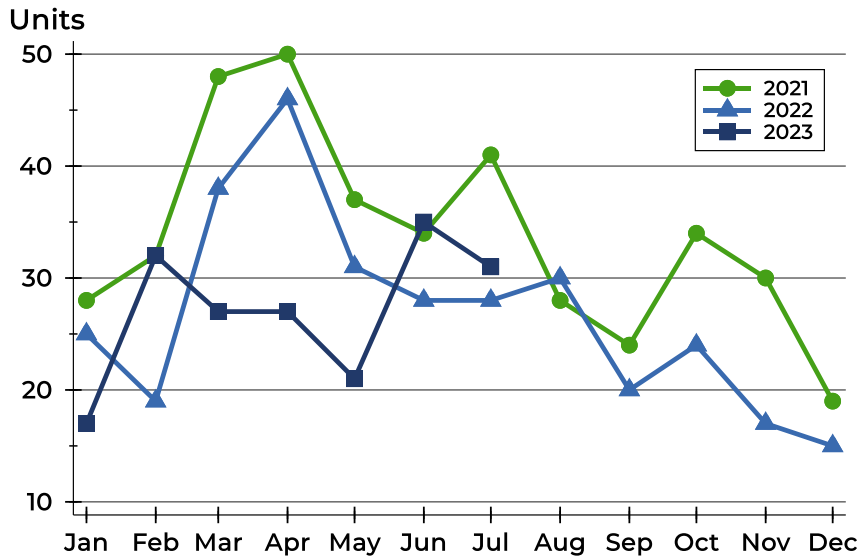
Units





Pottawatomie County Contracts Written Analysis

Contracts Written by Month



Month	2021	2022	2023
January	28	25	17
February	32	19	32
March	48	38	27
April	50	46	27
May	37	31	21
June	34	28	35
July	41	28	31
August	28	30	20
September	24	20	30
October	34	24	17
November	30	17	15
December	19	15	15

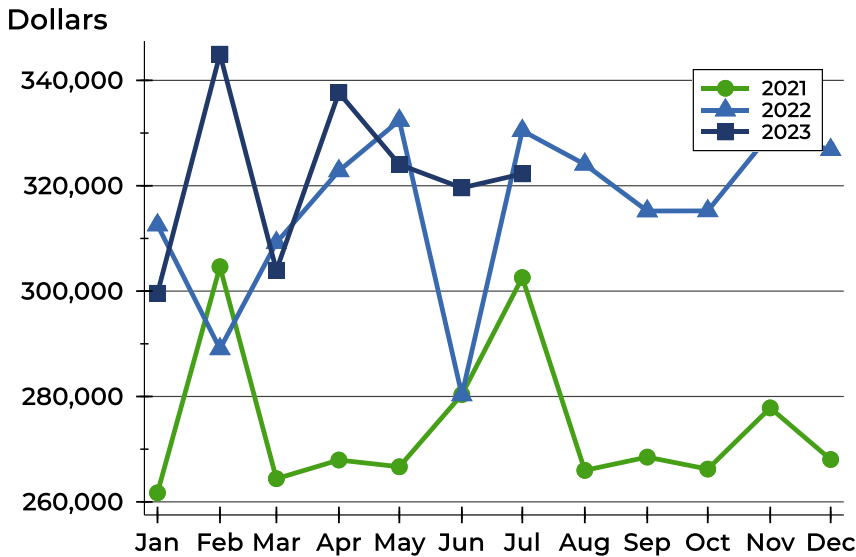
Contracts Written by Price Range

Price Range	Contracts Written		List Price		Days on Market		Price as % of Orig.	
	Number	Percent	Average	Median	Avg.	Med.	Avg.	Med.
Below \$25,000	0	0.0%	N/A	N/A	N/A	N/A	N/A	N/A
\$25,000-\$49,999	0	0.0%	N/A	N/A	N/A	N/A	N/A	N/A
\$50,000-\$99,999	1	3.2%	79,000	79,000	97	97	71.8%	71.8%
\$100,000-\$124,999	0	0.0%	N/A	N/A	N/A	N/A	N/A	N/A
\$125,000-\$149,999	1	3.2%	125,000	125,000	78	78	83.4%	83.4%
\$150,000-\$174,999	3	9.7%	162,433	159,900	3	3	100.0%	100.0%
\$175,000-\$199,999	0	0.0%	N/A	N/A	N/A	N/A	N/A	N/A
\$200,000-\$249,999	4	12.9%	213,250	211,500	25	3	98.8%	100.0%
\$250,000-\$299,999	6	19.4%	268,167	267,500	46	24	100.0%	100.0%
\$300,000-\$399,999	9	29.0%	355,189	369,900	76	59	93.5%	96.9%
\$400,000-\$499,999	3	9.7%	428,667	430,000	96	74	96.4%	95.8%
\$500,000-\$749,999	4	12.9%	588,500	572,000	30	10	99.3%	100.0%
\$750,000-\$999,999	0	0.0%	N/A	N/A	N/A	N/A	N/A	N/A
\$1,000,000 and up	0	0.0%	N/A	N/A	N/A	N/A	N/A	N/A



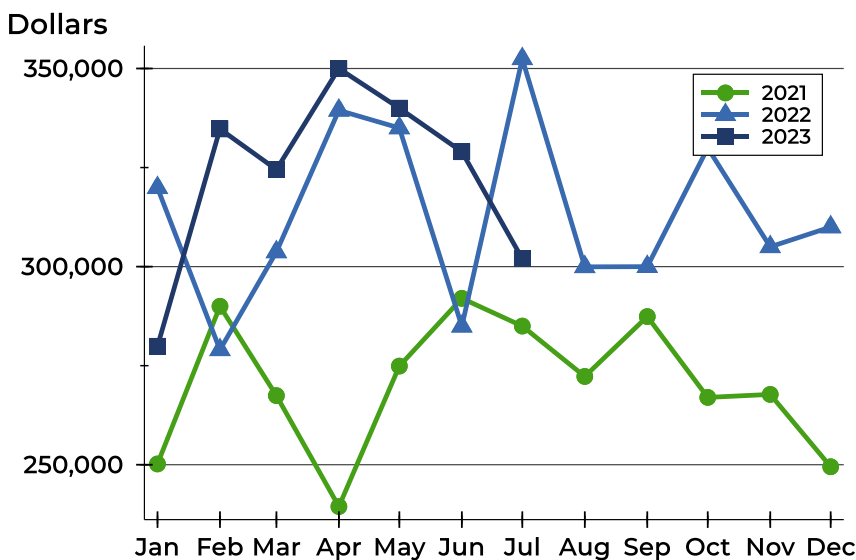
Pottawatomie County Contracts Written Analysis

Average Price



Month	2021	2022	2023
January	261,718	312,546	299,594
February	304,628	289,037	344,978
March	264,400	309,196	303,959
April	267,945	322,826	337,663
May	266,667	332,385	324,033
June	280,366	280,298	319,598
July	302,572	330,457	322,258
August	265,977	324,068	
September	268,499	315,205	
October	266,221	315,234	
November	277,837	329,815	
December	268,045	326,840	

Median Price

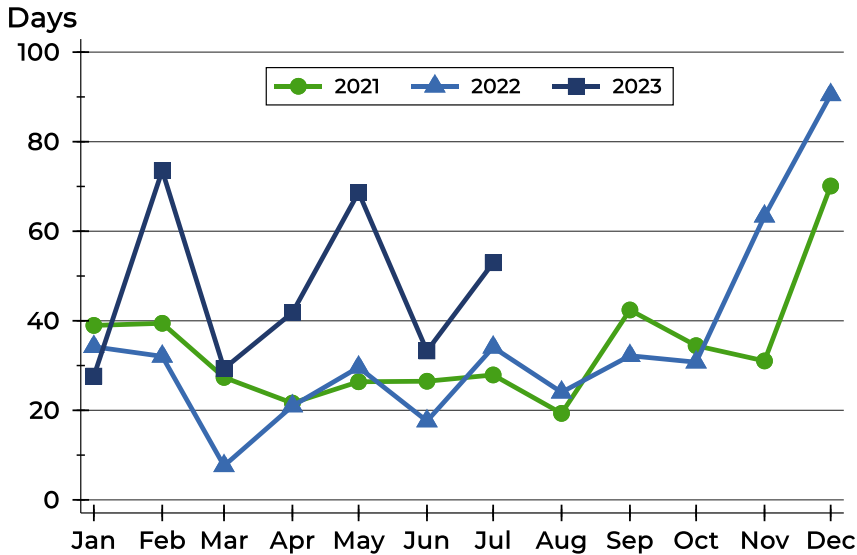


Month	2021	2022	2023
January	250,200	319,900	279,900
February	290,000	279,000	334,750
March	267,450	303,700	324,500
April	239,450	339,450	350,000
May	274,900	335,000	340,000
June	292,000	284,950	329,000
July	285,000	352,450	302,000
August	272,280	299,950	
September	287,400	300,000	
October	267,000	329,950	
November	267,750	305,000	
December	249,500	310,000	



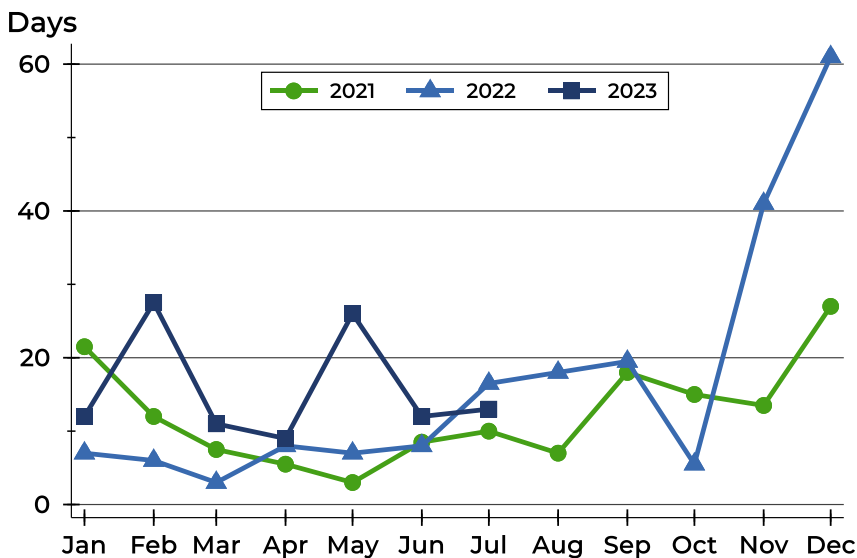
Pottawatomie County Contracts Written Analysis

Average DOM



Month	2021	2022	2023
January	39	34	28
February	39	32	74
March	27	8	29
April	22	21	42
May	26	30	69
June	27	18	33
July	28	34	53
August	19	24	
September	42	32	
October	34	31	
November	31	63	
December	70	90	

Median DOM



Month	2021	2022	2023
January	22	7	12
February	12	6	28
March	8	3	11
April	6	8	9
May	3	7	26
June	9	8	12
July	10	17	13
August	7	18	
September	18	20	
October	15	6	
November	14	41	
December	27	61	



Pottawatomie County Pending Contracts Analysis

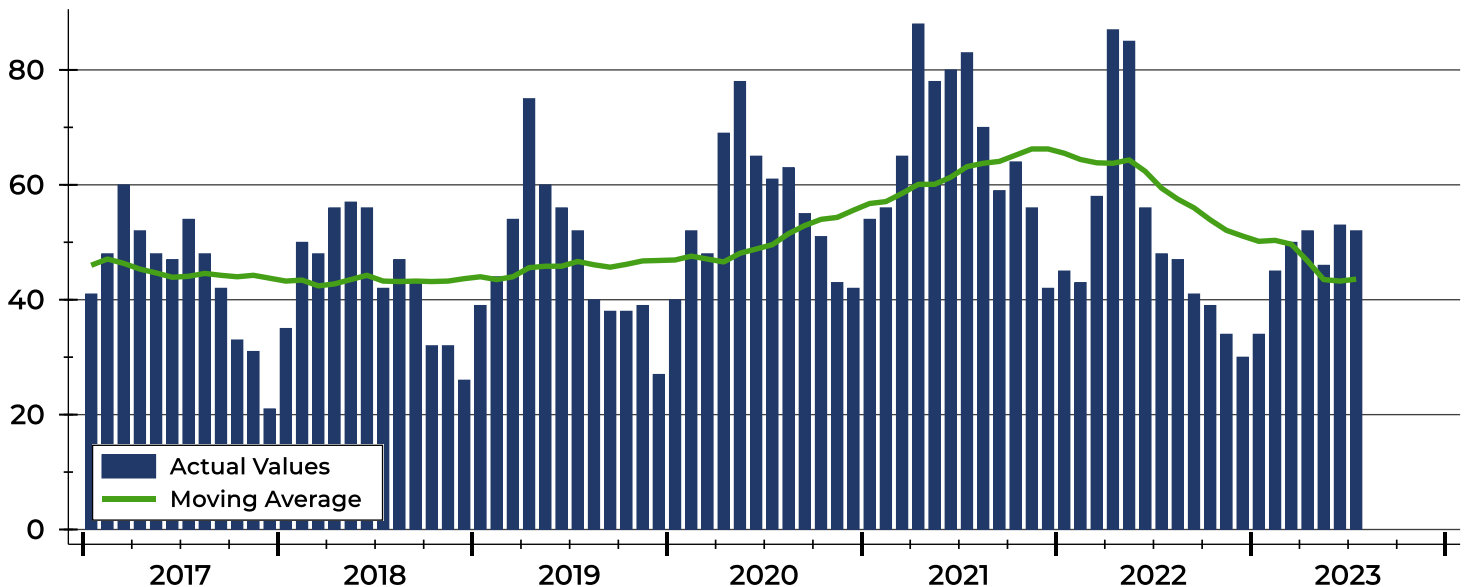
Summary Statistics for Pending Contracts		2023	End of July 2022	Change
Pending Contracts		52	48	8.3%
Volume (1,000s)		17,125	14,539	17.8%
Average	List Price	329,320	302,886	8.7%
	Days on Market	44	29	51.7%
	Percent of Original	97.7%	100.2%	-2.5%
Median	List Price	314,500	317,000	-0.8%
	Days on Market	12	18	-33.3%
	Percent of Original	100.0%	100.0%	0.0%

A total of 52 listings in Pottawatomie County had contracts pending at the end of July, up from 48 contracts pending at the end of July 2022.

Pending contracts reflect listings with a contract in place at the end of the month. In contrast, contracts written measures the number of listings put under contract during the month.

History of Pending Contracts

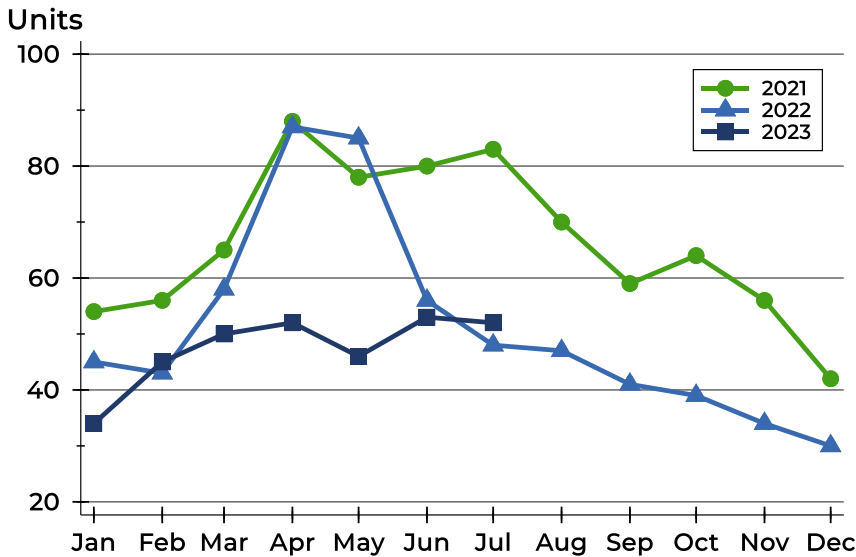
Units





Pottawatomie County Pending Contracts Analysis

Pending Contracts by Month



Month	2021	2022	2023
January	54	45	34
February	56	43	45
March	65	58	50
April	88	87	52
May	78	85	46
June	80	56	53
July	83	48	52
August	70	47	
September	59	41	
October	64	39	
November	56	34	
December	42	30	

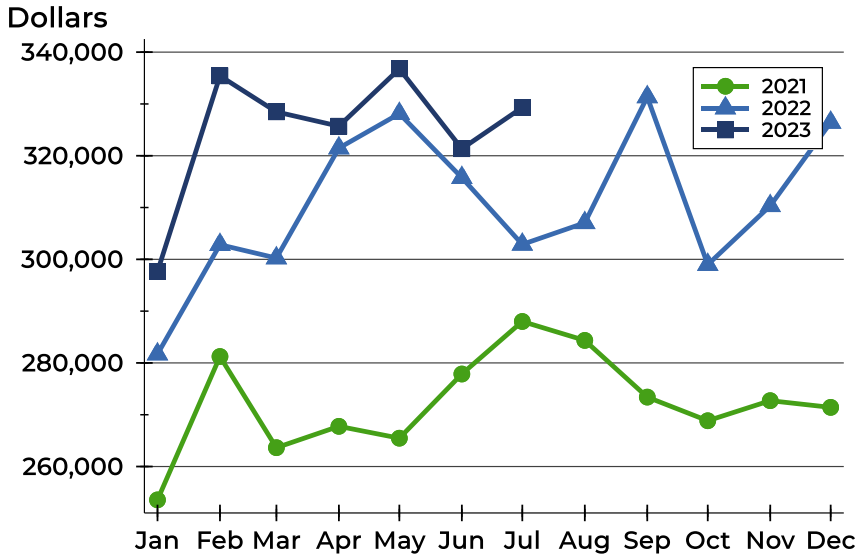
Pending Contracts by Price Range

Price Range	Pending Contracts		List Price		Days on Market		Price as % of Orig.	
	Number	Percent	Average	Median	Avg.	Med.	Avg.	Med.
Below \$25,000	0	0.0%	N/A	N/A	N/A	N/A	N/A	N/A
\$25,000-\$49,999	0	0.0%	N/A	N/A	N/A	N/A	N/A	N/A
\$50,000-\$99,999	1	1.9%	79,000	79,000	97	97	71.8%	71.8%
\$100,000-\$124,999	0	0.0%	N/A	N/A	N/A	N/A	N/A	N/A
\$125,000-\$149,999	2	3.8%	130,500	130,500	40	40	91.7%	91.7%
\$150,000-\$174,999	3	5.8%	162,433	159,900	3	3	100.0%	100.0%
\$175,000-\$199,999	2	3.8%	187,200	187,200	33	33	95.3%	95.3%
\$200,000-\$249,999	8	15.4%	227,725	229,750	26	17	99.4%	100.0%
\$250,000-\$299,999	8	15.4%	273,600	275,000	17	7	102.9%	100.0%
\$300,000-\$399,999	17	32.7%	354,188	345,000	63	39	95.9%	98.8%
\$400,000-\$499,999	5	9.6%	437,800	444,000	59	12	97.9%	100.0%
\$500,000-\$749,999	6	11.5%	617,021	597,000	60	53	99.0%	99.2%
\$750,000-\$999,999	0	0.0%	N/A	N/A	N/A	N/A	N/A	N/A
\$1,000,000 and up	0	0.0%	N/A	N/A	N/A	N/A	N/A	N/A



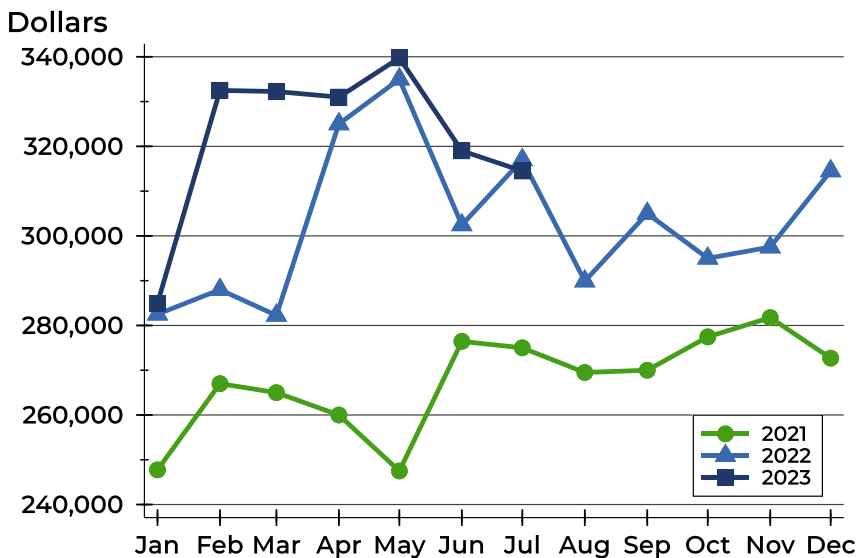
Pottawatomie County Pending Contracts Analysis

Average Price



Month	2021	2022	2023
January	253,565	281,700	297,634
February	281,241	302,832	335,418
March	263,641	300,248	328,472
April	267,766	321,471	325,708
May	265,473	328,125	336,778
June	277,862	315,771	321,353
July	288,006	302,886	329,320
August	284,350	307,048	
September	273,403	331,346	
October	268,839	298,977	
November	272,718	310,334	
December	271,423	326,423	

Median Price

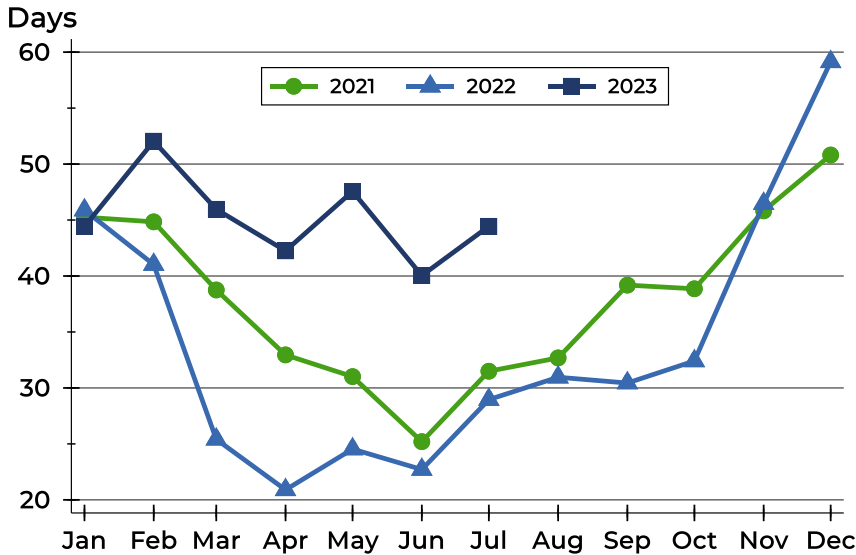


Month	2021	2022	2023
January	247,750	282,500	284,950
February	267,000	288,000	332,500
March	265,000	282,250	332,250
April	260,000	325,000	331,000
May	247,500	335,000	339,750
June	276,450	302,450	319,000
July	275,000	317,000	314,500
August	269,500	289,900	
September	270,000	305,000	
October	277,450	295,000	
November	281,750	297,500	
December	272,700	314,500	



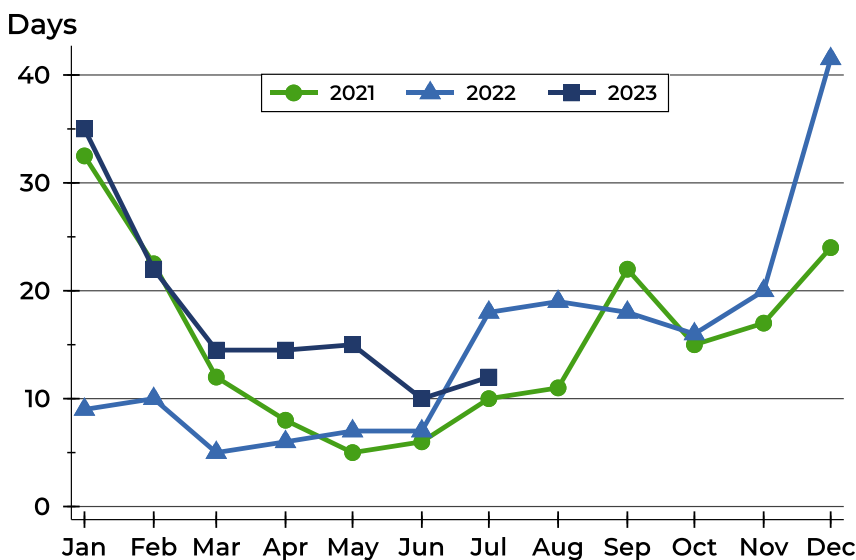
Pottawatomie County Pending Contracts Analysis

Average DOM



Month	2021	2022	2023
January	45	46	44
February	45	41	52
March	39	25	46
April	33	21	42
May	31	25	48
June	25	23	40
July	31	29	44
August	33	31	31
September	39	30	30
October	39	32	32
November	46	46	46
December	51	59	59

Median DOM



Month	2021	2022	2023
January	33	9	35
February	23	10	22
March	12	5	15
April	8	6	15
May	5	7	15
June	6	7	10
July	10	18	12
August	11	19	11
September	22	18	22
October	15	16	15
November	17	20	17
December	24	42	24