



# Pottawatomie County Housing Report



## Market Overview

### Pottawatomie County Home Sales Fell in August

Total home sales in Pottawatomie County fell last month to 29 units, compared to 36 units in August 2022. Total sales volume was \$9.0 million, down from a year earlier.

The median sale price in August was \$316,806, down from \$337,500 a year earlier. Homes that sold in August were typically on the market for 12 days and sold for 100.0% of their list prices.

### Pottawatomie County Active Listings Remain the Same at End of August

The total number of active listings in Pottawatomie County at the end of August was 56 units, the same as in August 2022. This represents a 2.3 months' supply of homes available for sale. The median list price of homes on the market at the end of August was \$326,950.

During August, a total of 20 contracts were written down from 30 in August 2022. At the end of the month, there were 39 contracts still pending.

## Report Contents

- Summary Statistics – Page 2
- Closed Listing Analysis – Page 3
- Active Listings Analysis – Page 7
- Months' Supply Analysis – Page 11
- New Listings Analysis – Page 12
- Contracts Written Analysis – Page 15
- Pending Contracts Analysis – Page 19

## Contact Information

Margaret Pendleton, Association Executive  
 Flint Hills Association of REALTORS®  
 205 S. Seth Child Road  
 Manhattan, KS 66502  
 785-776-1203  
[ae@flinthillsrealtors.net](mailto:ae@flinthillsrealtors.net)  
[www.flinthillsrealtors.net](http://www.flinthillsrealtors.net)



**August  
2023**

# Flint Hills MLS Statistics



**FLINT HILLS  
ASSOCIATION  
OF REALTORS®**

## Pottawatomie County Summary Statistics

August MLS Statistics Three-year History		Current Month			Year-to-Date		
		2023	2022	2021	2023	2022	2021
<b>Home Sales</b>		<b>29</b>	<b>36</b>	<b>44</b>	<b>201</b>	<b>243</b>	<b>273</b>
Change from prior year		-19.4%	-18.2%	33.3%	-17.3%	-11.0%	10.5%
<b>Active Listings</b>		<b>56</b>	<b>56</b>	<b>50</b>	<b>N/A</b>	<b>N/A</b>	<b>N/A</b>
Change from prior year		0.0%	12.0%	8.7%			
<b>Months' Supply</b>		<b>2.3</b>	<b>1.8</b>	<b>1.5</b>	<b>N/A</b>	<b>N/A</b>	<b>N/A</b>
Change from prior year		27.8%	20.0%	-6.3%			
<b>New Listings</b>		<b>34</b>	<b>46</b>	<b>33</b>	<b>260</b>	<b>314</b>	<b>325</b>
Change from prior year		-26.1%	39.4%	26.9%	-17.2%	-3.4%	5.5%
<b>Contracts Written</b>		<b>20</b>	<b>30</b>	<b>28</b>	<b>210</b>	<b>245</b>	<b>298</b>
Change from prior year		-33.3%	7.1%	-22.2%	-14.3%	-17.8%	4.2%
<b>Pending Contracts</b>		<b>39</b>	<b>47</b>	<b>70</b>	<b>N/A</b>	<b>N/A</b>	<b>N/A</b>
Change from prior year		-17.0%	-32.9%	11.1%			
<b>Sales Volume (1,000s)</b>		<b>9,018</b>	<b>11,407</b>	<b>12,125</b>	<b>64,443</b>	<b>75,765</b>	<b>73,625</b>
Change from prior year		-20.9%	-5.9%	38.3%	-14.9%	2.9%	18.1%
Average	<b>Sale Price</b>	<b>310,969</b>	<b>316,847</b>	<b>275,567</b>	<b>320,612</b>	<b>311,791</b>	<b>269,690</b>
	Change from prior year	-1.9%	15.0%	3.7%	2.8%	15.6%	6.9%
	<b>List Price of Actives</b>	<b>351,161</b>	<b>387,600</b>	<b>272,958</b>	<b>N/A</b>	<b>N/A</b>	<b>N/A</b>
	Change from prior year	-9.4%	42.0%	-5.5%			
	<b>Days on Market</b>	<b>45</b>	<b>28</b>	<b>32</b>	<b>48</b>	<b>25</b>	<b>32</b>
Change from prior year	60.7%	-12.5%	-15.8%	92.0%	-21.9%	-36.0%	
	<b>Percent of List</b>	<b>99.4%</b>	<b>99.3%</b>	<b>99.5%</b>	<b>99.5%</b>	<b>100.6%</b>	<b>99.9%</b>
Change from prior year	0.1%	-0.2%	0.7%	-1.1%	0.7%	1.1%	
	<b>Percent of Original</b>	<b>96.8%</b>	<b>98.9%</b>	<b>98.7%</b>	<b>97.8%</b>	<b>100.1%</b>	<b>99.1%</b>
Change from prior year	-2.1%	0.2%	1.0%	-2.3%	1.0%	1.8%	
Median	<b>Sale Price</b>	<b>316,806</b>	<b>337,500</b>	<b>281,200</b>	<b>325,000</b>	<b>320,000</b>	<b>269,000</b>
	Change from prior year	-6.1%	20.0%	12.5%	1.6%	19.0%	10.5%
	<b>List Price of Actives</b>	<b>326,950</b>	<b>353,750</b>	<b>278,950</b>	<b>N/A</b>	<b>N/A</b>	<b>N/A</b>
	Change from prior year	-7.6%	26.8%	0.1%			
	<b>Days on Market</b>	<b>12</b>	<b>12</b>	<b>9</b>	<b>14</b>	<b>7</b>	<b>8</b>
Change from prior year	0.0%	33.3%	-62.5%	100.0%	-12.5%	-65.2%	
	<b>Percent of List</b>	<b>100.0%</b>	<b>100.0%</b>	<b>100.0%</b>	<b>100.0%</b>	<b>100.0%</b>	<b>100.0%</b>
Change from prior year	0.0%	0.0%	0.8%	0.0%	0.0%	0.5%	
	<b>Percent of Original</b>	<b>99.0%</b>	<b>98.8%</b>	<b>100.0%</b>	<b>99.6%</b>	<b>100.0%</b>	<b>100.0%</b>
Change from prior year	0.2%	-1.2%	1.3%	-0.4%	0.0%	1.2%	

Note: Year-to-date statistics cannot be calculated for Active Listings, Months' Supply and Pending Contracts.



## Pottawatomie County Closed Listings Analysis

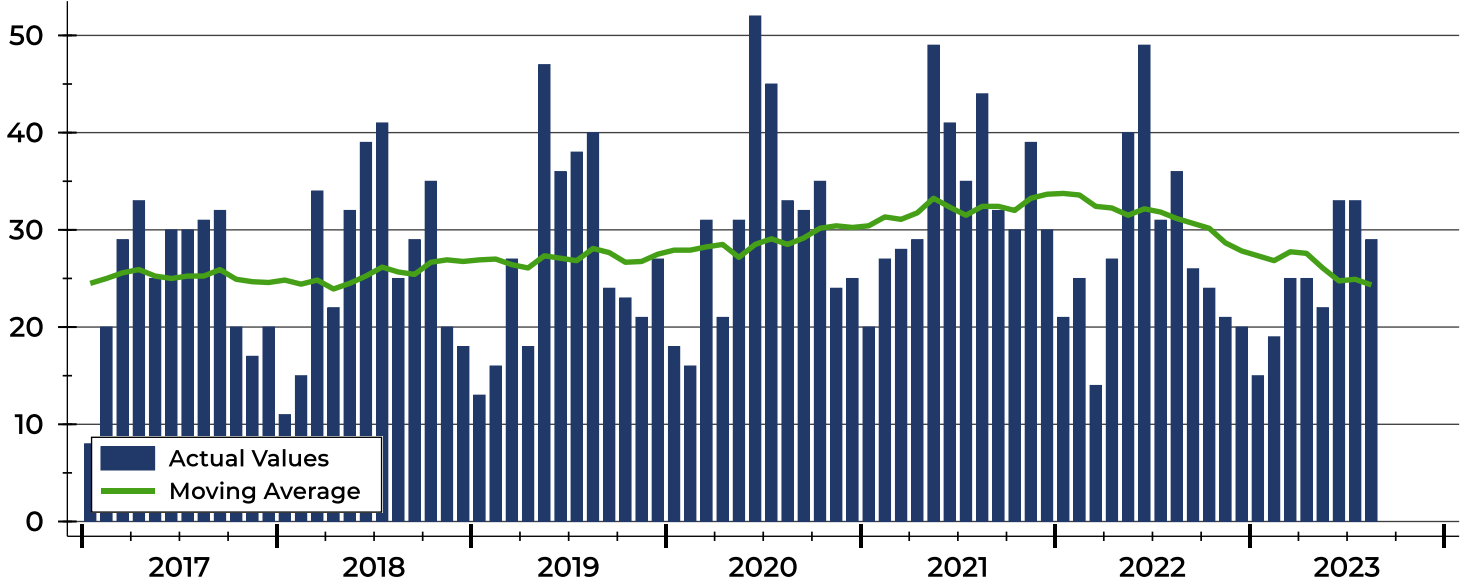
Summary Statistics for Closed Listings		2023	August 2022	Change	2023	Year-to-Date 2022	Change
Closed Listings		<b>29</b>	36	-19.4%	<b>201</b>	243	-17.3%
Volume (1,000s)		<b>9,018</b>	11,407	-20.9%	<b>64,443</b>	75,765	-14.9%
Months' Supply		<b>2.3</b>	1.8	27.8%	<b>N/A</b>	N/A	N/A
Average	Sale Price	<b>310,969</b>	316,847	-1.9%	<b>320,612</b>	311,791	2.8%
	Days on Market	<b>45</b>	28	60.7%	<b>48</b>	25	92.0%
	Percent of List	<b>99.4%</b>	99.3%	0.1%	<b>99.5%</b>	100.6%	-1.1%
	Percent of Original	<b>96.8%</b>	98.9%	-2.1%	<b>97.8%</b>	100.1%	-2.3%
Median	Sale Price	<b>316,806</b>	337,500	-6.1%	<b>325,000</b>	320,000	1.6%
	Days on Market	<b>12</b>	12	0.0%	<b>14</b>	7	100.0%
	Percent of List	<b>100.0%</b>	100.0%	0.0%	<b>100.0%</b>	100.0%	0.0%
	Percent of Original	<b>99.0%</b>	98.8%	0.2%	<b>99.6%</b>	100.0%	-0.4%

A total of 29 homes sold in Pottawatomie County in August, down from 36 units in August 2022. Total sales volume fell to \$9.0 million compared to \$11.4 million in the previous year.

The median sales price in August was \$316,806, down 6.1% compared to the prior year. Median days on market was 12 days, up from 9 days in July, but similar to August 2022.

## History of Closed Listings

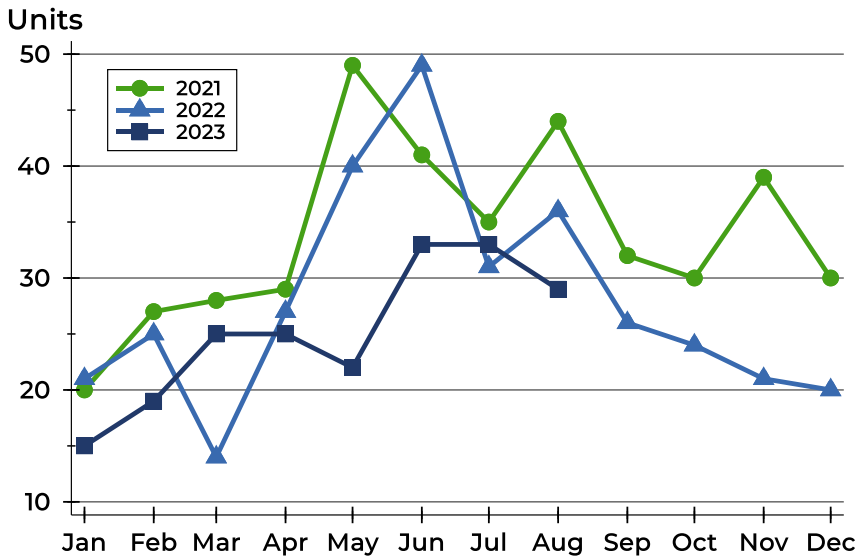
Units





## Pottawatomie County Closed Listings Analysis

### Closed Listings by Month



Month	2021	2022	2023
January	20	21	15
February	27	25	19
March	28	14	25
April	29	27	25
May	49	40	22
June	41	49	33
July	35	31	33
August	44	36	29
September	32	26	
October	30	24	
November	39	21	
December	30	20	

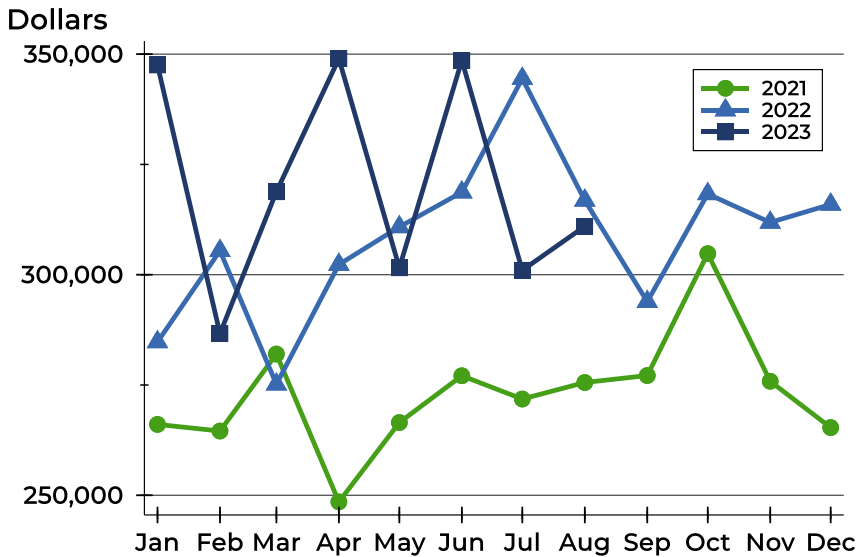
### Closed Listings by Price Range

Price Range	Sales		Months' Supply	Sale Price		Days on Market		Price as % of List		Price as % of Orig.	
	Number	Percent		Average	Median	Avg.	Med.	Avg.	Med.	Avg.	Med.
Below \$25,000	0	0.0%	N/A	N/A	N/A	N/A	N/A	N/A	N/A	N/A	N/A
\$25,000-\$49,999	0	0.0%	N/A	N/A	N/A	N/A	N/A	N/A	N/A	N/A	N/A
\$50,000-\$99,999	1	3.4%	4.8	70,000	70,000	97	97	88.6%	88.6%	63.6%	63.6%
\$100,000-\$124,999	1	3.4%	8.0	117,600	117,600	78	78	94.1%	94.1%	78.5%	78.5%
\$125,000-\$149,999	0	0.0%	N/A	N/A	N/A	N/A	N/A	N/A	N/A	N/A	N/A
\$150,000-\$174,999	2	6.9%	1.4	164,250	164,250	3	3	98.8%	98.8%	98.8%	98.8%
\$175,000-\$199,999	2	6.9%	0.9	189,500	189,500	47	47	97.5%	97.5%	95.2%	95.2%
\$200,000-\$249,999	4	13.8%	2.0	226,450	225,500	9	3	100.4%	100.0%	100.4%	100.0%
\$250,000-\$299,999	3	10.3%	2.4	274,333	280,000	4	4	104.3%	103.4%	104.3%	103.4%
\$300,000-\$399,999	11	37.9%	1.7	348,746	335,000	64	19	100.0%	100.0%	98.3%	99.3%
\$400,000-\$499,999	3	10.3%	2.4	438,333	435,000	30	12	99.0%	98.9%	96.8%	98.0%
\$500,000-\$749,999	2	6.9%	3.8	621,500	621,500	98	98	97.8%	97.8%	95.5%	95.5%
\$750,000-\$999,999	0	0.0%	N/A	N/A	N/A	N/A	N/A	N/A	N/A	N/A	N/A
\$1,000,000 and up	0	0.0%	N/A	N/A	N/A	N/A	N/A	N/A	N/A	N/A	N/A



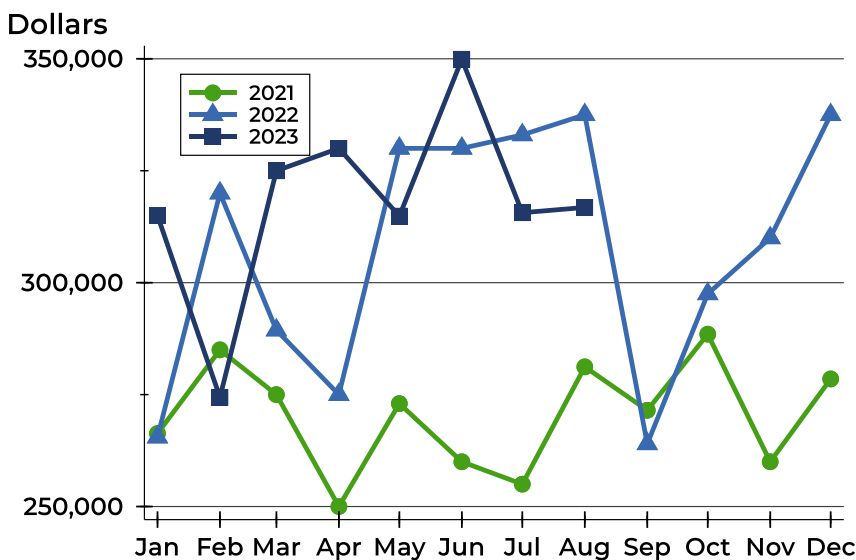
## Pottawatomie County Closed Listings Analysis

### Average Price



Month	2021	2022	2023
January	266,064	284,752	<b>347,548</b>
February	264,562	305,443	<b>286,647</b>
March	282,018	275,167	<b>318,804</b>
April	248,504	302,308	<b>348,976</b>
May	266,490	310,831	<b>301,576</b>
June	277,099	318,706	<b>348,576</b>
July	271,821	344,468	<b>301,005</b>
August	275,567	316,847	<b>310,969</b>
September	277,140	293,881	
October	304,775	318,325	
November	275,848	311,843	
December	265,343	315,935	

### Median Price

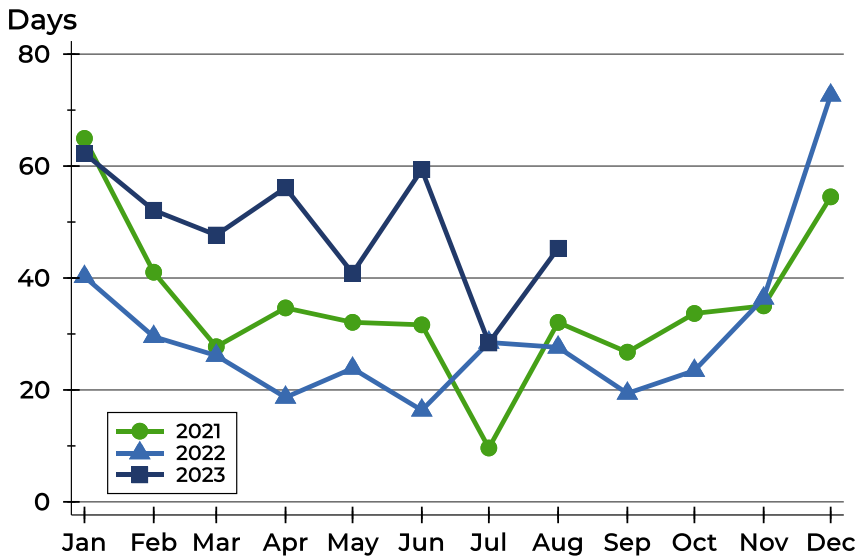


Month	2021	2022	2023
January	266,314	265,500	<b>315,000</b>
February	285,000	320,000	<b>274,400</b>
March	275,000	289,400	<b>325,000</b>
April	250,000	275,000	<b>330,000</b>
May	273,000	330,000	<b>314,875</b>
June	260,000	330,000	<b>349,900</b>
July	255,000	333,000	<b>315,626</b>
August	281,200	337,500	<b>316,806</b>
September	271,500	264,000	
October	288,500	297,500	
November	260,000	310,000	
December	278,500	337,500	



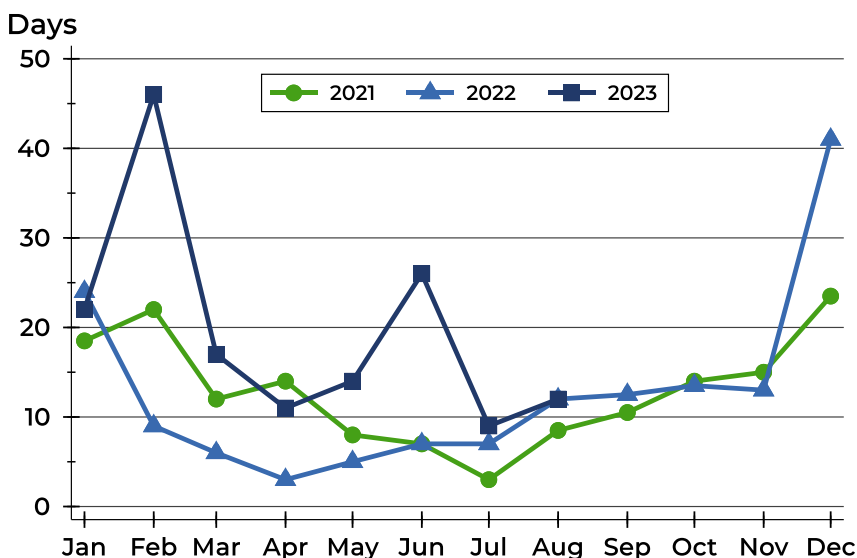
## Pottawatomie County Closed Listings Analysis

### Average DOM



Month	2021	2022	2023
January	65	40	<b>62</b>
February	41	30	<b>52</b>
March	28	26	<b>48</b>
April	35	19	<b>56</b>
May	32	24	<b>41</b>
June	32	16	<b>59</b>
July	10	28	<b>28</b>
August	32	28	<b>45</b>
September	27	19	
October	34	23	
November	35	36	
December	55	73	

### Median DOM



Month	2021	2022	2023
January	19	24	<b>22</b>
February	22	9	<b>46</b>
March	12	6	<b>17</b>
April	14	3	<b>11</b>
May	8	5	<b>14</b>
June	7	7	<b>26</b>
July	3	7	<b>9</b>
August	9	12	<b>12</b>
September	11	13	
October	14	14	
November	15	13	
December	24	41	



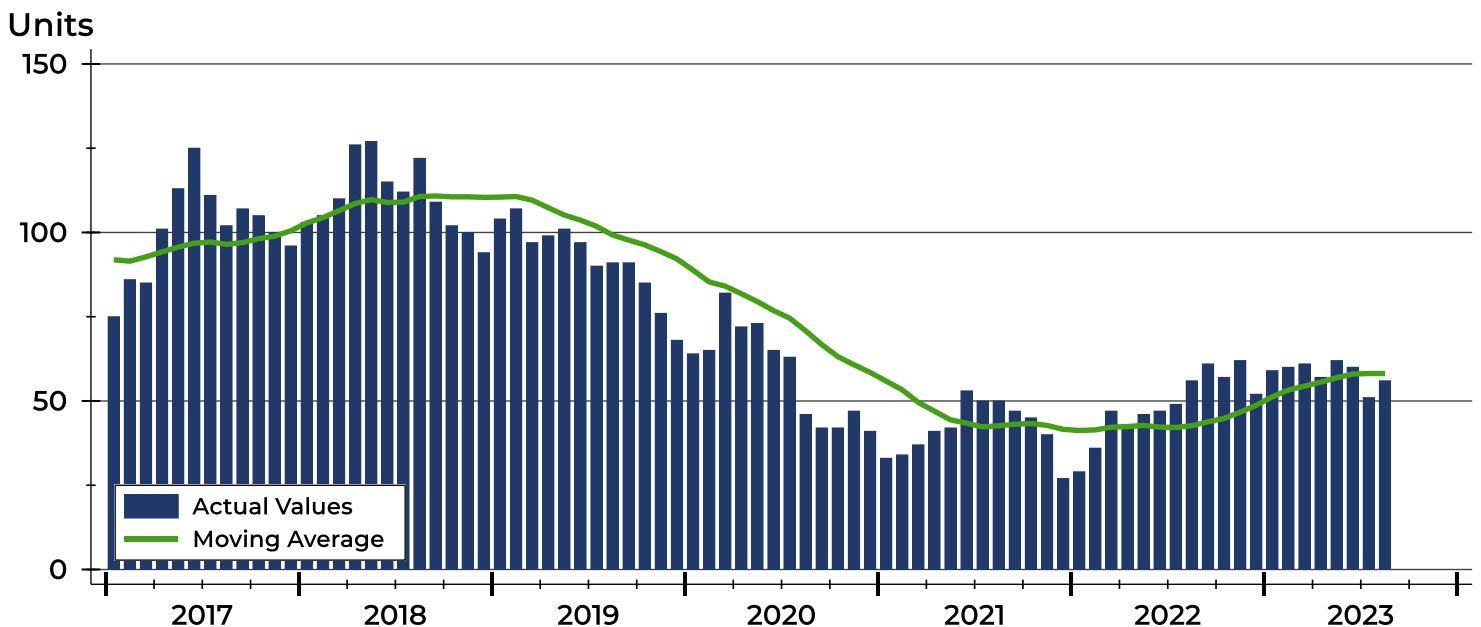
# Pottawatomie County Active Listings Analysis

Summary Statistics for Active Listings		2023	End of August 2022	Change
Active Listings		56	56	0.0%
Volume (1,000s)		19,665	21,706	-9.4%
Months' Supply		2.3	1.8	27.8%
Average	List Price	351,161	387,600	-9.4%
	Days on Market	62	62	0.0%
	Percent of Original	97.9%	98.8%	-0.9%
Median	List Price	326,950	353,750	-7.6%
	Days on Market	37	41	-9.8%
	Percent of Original	100.0%	100.0%	0.0%

A total of 56 homes were available for sale in Pottawatomie County at the end of August. This represents a 2.3 months' supply of active listings.

The median list price of homes on the market at the end of August was \$326,950, down 7.6% from 2022. The typical time on market for active listings was 37 days, down from 41 days a year earlier.

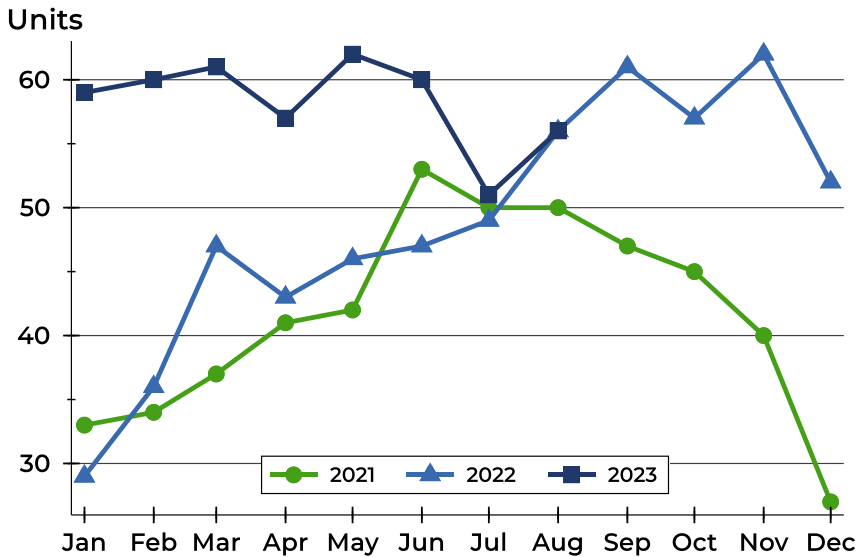
## History of Active Listings





## Pottawatomie County Active Listings Analysis

### Active Listings by Month



Month	2021	2022	2023
January	33	29	<b>59</b>
February	34	36	<b>60</b>
March	37	47	<b>61</b>
April	41	43	<b>57</b>
May	42	46	<b>62</b>
June	53	47	<b>60</b>
July	50	49	<b>51</b>
August	50	56	<b>56</b>
September	47	61	
October	45	57	
November	40	62	
December	27	52	

### Active Listings by Price Range

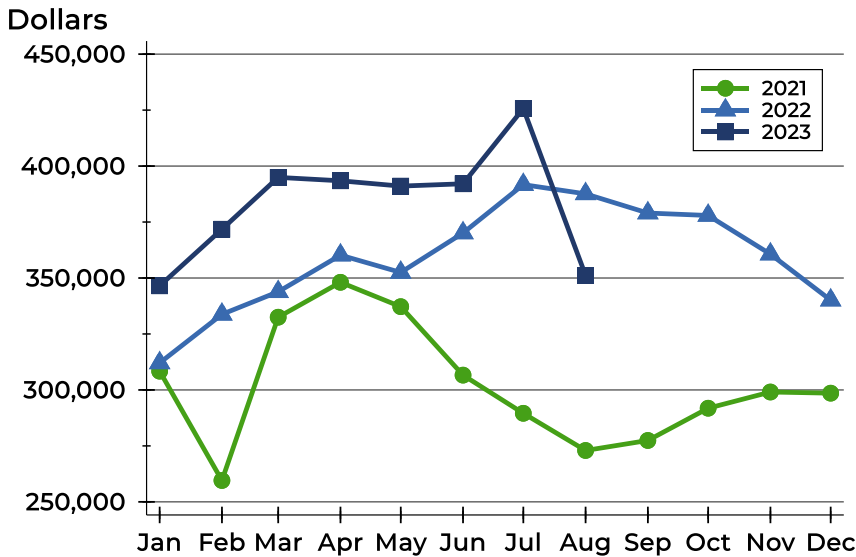
Price Range	Active Listings		Months' Supply	List Price		Days on Market		Price as % of Orig.	
	Number	Percent		Average	Median	Avg.	Med.	Avg.	Med.
Below \$25,000	0	0.0%	N/A	N/A	N/A	N/A	N/A	N/A	N/A
\$25,000-\$49,999	0	0.0%	N/A	N/A	N/A	N/A	N/A	N/A	N/A
\$50,000-\$99,999	2	3.6%	4.8	82,250	82,250	77	77	82.6%	82.6%
\$100,000-\$124,999	2	3.6%	8.0	110,000	110,000	77	77	90.4%	90.4%
\$125,000-\$149,999	3	5.4%	N/A	136,667	136,000	16	14	97.7%	100.0%
\$150,000-\$174,999	2	3.6%	1.4	168,900	168,900	83	83	100.0%	100.0%
\$175,000-\$199,999	1	1.8%	0.9	199,900	199,900	19	19	97.5%	97.5%
\$200,000-\$249,999	6	10.7%	2.0	231,200	229,850	37	10	100.0%	100.0%
\$250,000-\$299,999	10	17.9%	2.4	273,380	270,000	45	22	98.4%	100.0%
\$300,000-\$399,999	15	26.8%	1.7	362,533	364,900	59	50	98.6%	100.0%
\$400,000-\$499,999	7	12.5%	2.4	434,257	429,000	151	123	97.8%	100.0%
\$500,000-\$749,999	6	10.7%	3.8	598,167	607,000	33	9	99.7%	100.0%
\$750,000-\$999,999	1	1.8%	N/A	895,000	895,000	38	38	100.0%	100.0%
\$1,000,000 and up	1	1.8%	N/A	1,250,000	1,250,000	70	70	100.0%	100.0%





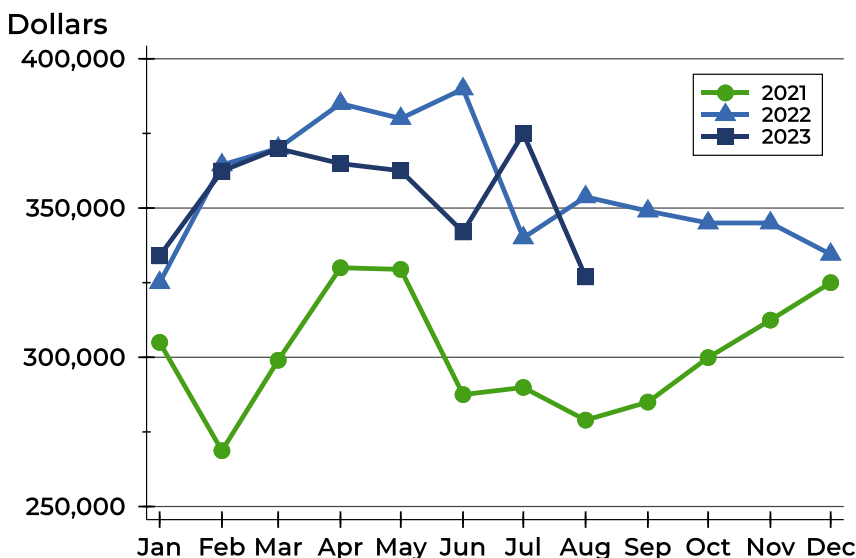
# Pottawatomie County Active Listings Analysis

## Average Price



Month	2021	2022	2023
January	308,385	312,066	<b>346,498</b>
February	259,565	333,767	<b>371,789</b>
March	332,489	343,857	<b>394,956</b>
April	348,095	360,213	<b>393,429</b>
May	337,200	352,492	<b>391,065</b>
June	306,614	370,121	<b>392,093</b>
July	289,574	391,716	<b>425,723</b>
August	272,958	387,600	<b>351,161</b>
September	277,430	379,030	
October	291,840	377,949	
November	299,078	360,668	
December	298,563	340,103	

## Median Price

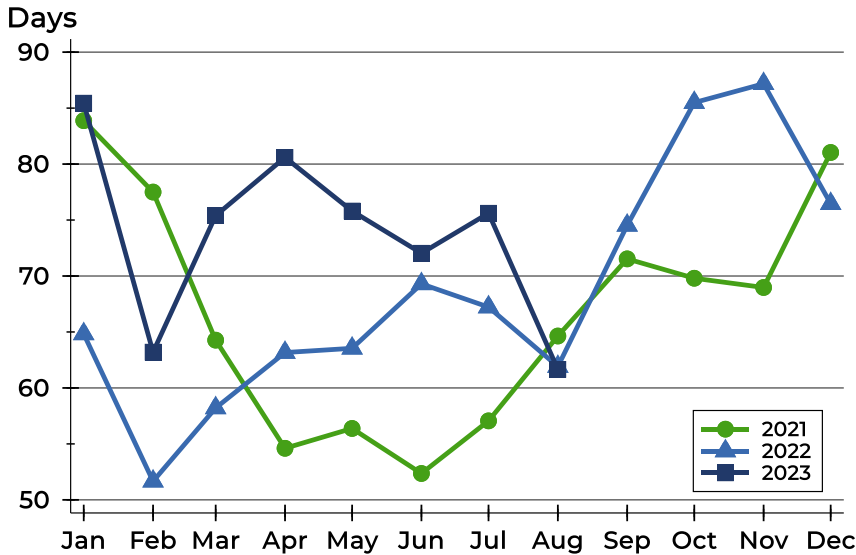


Month	2021	2022	2023
January	305,000	325,000	<b>334,000</b>
February	268,700	364,450	<b>362,400</b>
March	299,000	370,000	<b>369,900</b>
April	330,000	385,000	<b>364,900</b>
May	329,450	380,000	<b>362,500</b>
June	287,500	389,900	<b>342,000</b>
July	289,900	340,000	<b>375,000</b>
August	278,950	353,750	<b>326,950</b>
September	285,000	349,000	
October	299,900	345,000	
November	312,450	345,000	
December	325,000	334,500	



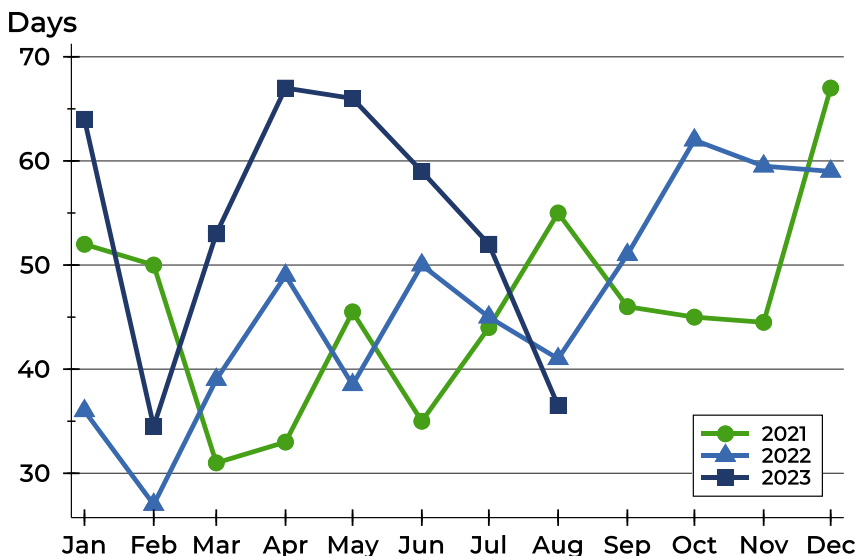
## Pottawatomie County Active Listings Analysis

### Average DOM



Month	2021	2022	2023
January	84	65	<b>85</b>
February	78	52	<b>63</b>
March	64	58	<b>75</b>
April	55	63	<b>81</b>
May	56	64	<b>76</b>
June	52	69	<b>72</b>
July	57	67	<b>76</b>
August	65	62	<b>62</b>
September	72	75	
October	70	85	
November	69	87	
December	81	76	

### Median DOM

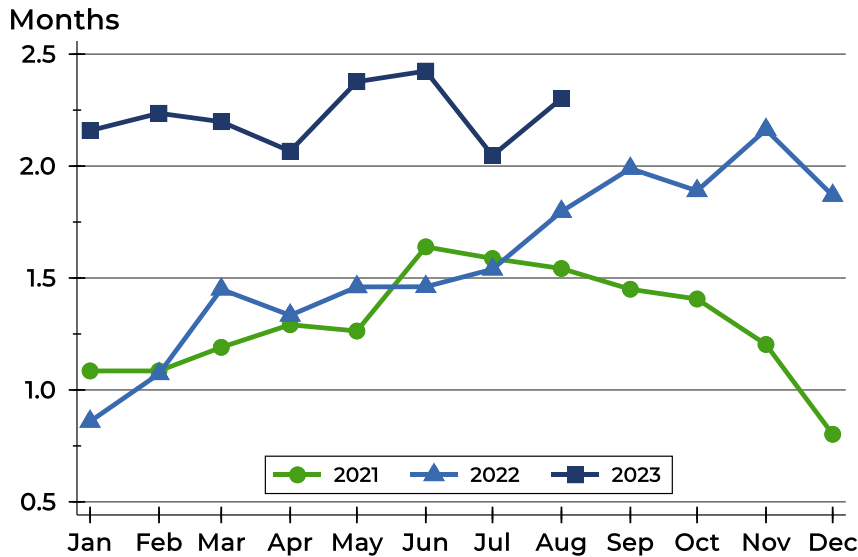


Month	2021	2022	2023
January	52	36	<b>64</b>
February	50	27	<b>35</b>
March	31	39	<b>53</b>
April	33	49	<b>67</b>
May	46	39	<b>66</b>
June	35	50	<b>59</b>
July	44	45	<b>52</b>
August	55	41	<b>37</b>
September	46	51	
October	45	62	
November	45	60	
December	67	59	



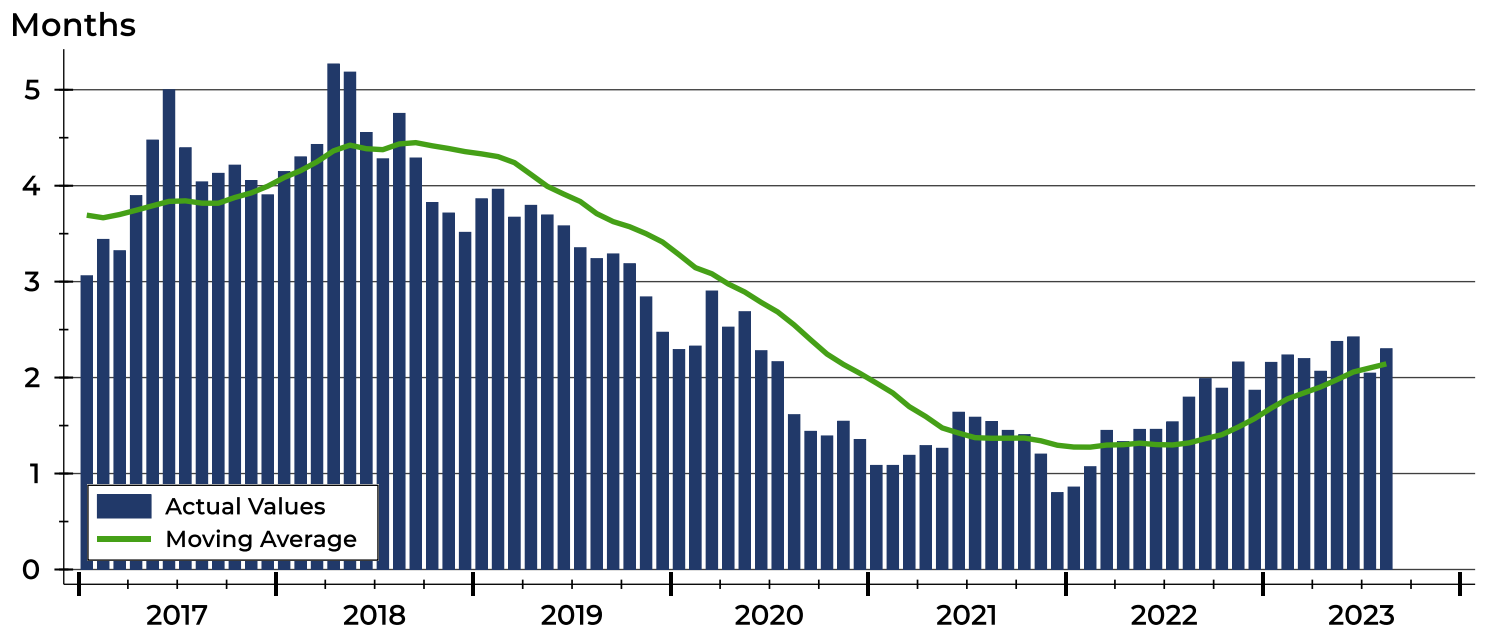
# Pottawatomie County Months' Supply Analysis

## Months' Supply by Month



Month	2021	2022	2023
January	1.1	0.9	2.2
February	1.1	1.1	2.2
March	1.2	1.4	2.2
April	1.3	1.3	2.1
May	1.3	1.5	2.4
June	1.6	1.5	2.4
July	1.6	1.5	2.0
August	1.5	1.8	2.3
September	1.4	2.0	1.9
October	1.4	1.9	1.9
November	1.2	2.2	2.2
December	0.8	1.9	1.9

## History of Month's Supply





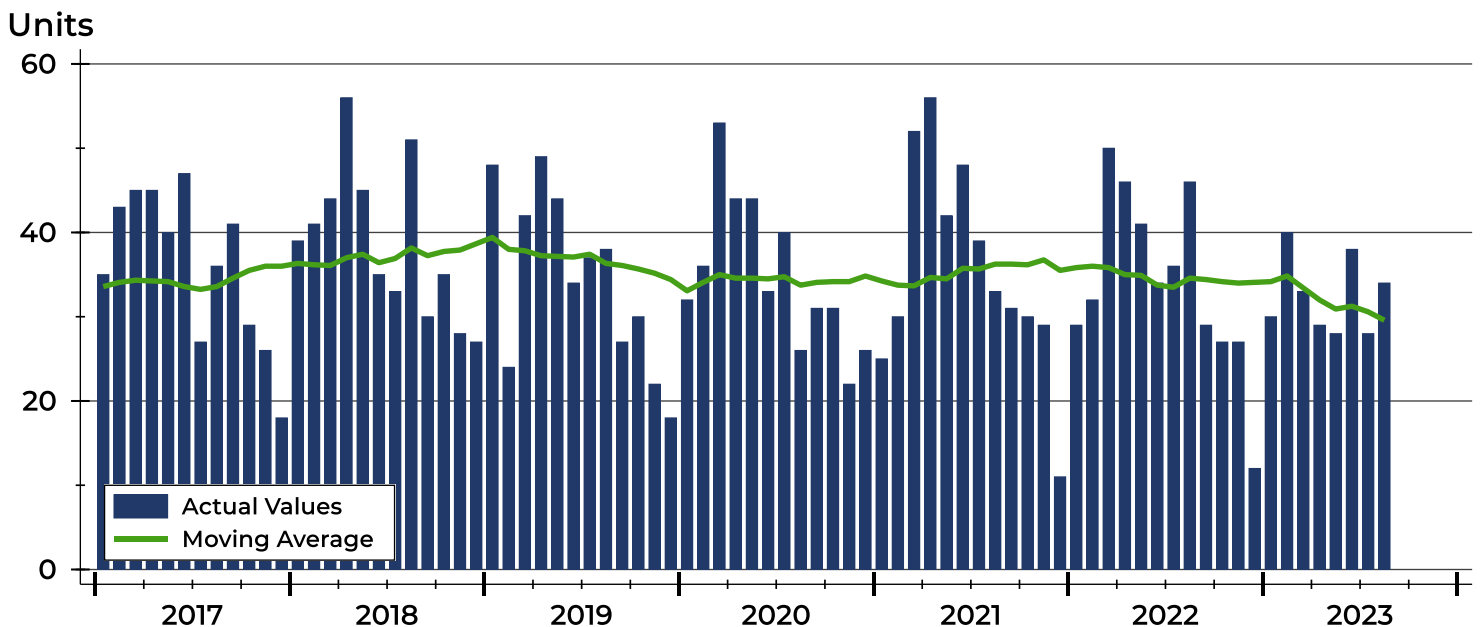
## Pottawatomie County New Listings Analysis

Summary Statistics for New Listings		2023	August 2022	Change
Current Month	New Listings	<b>34</b>	46	-26.1%
	Volume (1,000s)	<b>11,190</b>	15,231	-26.5%
	Average List Price	<b>329,106</b>	331,116	-0.6%
	Median List Price	<b>290,000</b>	325,000	-10.8%
Year-to-Date	New Listings	<b>260</b>	314	-17.2%
	Volume (1,000s)	<b>91,667</b>	105,385	-13.0%
	Average List Price	<b>352,566</b>	335,622	5.0%
	Median List Price	<b>335,000</b>	329,900	1.5%

A total of 34 new listings were added in Pottawatomie County during August, down 26.1% from the same month in 2022. Year-to-date Pottawatomie County has seen 260 new listings.

The median list price of these homes was \$290,000 down from \$325,000 in 2022.

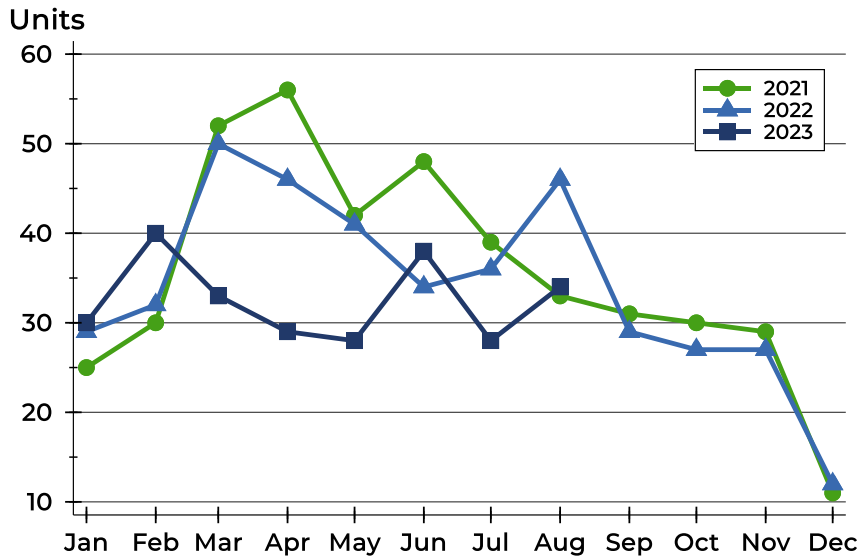
## History of New Listings





## Pottawatomie County New Listings Analysis

### New Listings by Month



Month	2021	2022	2023
January	25	29	<b>30</b>
February	30	32	<b>40</b>
March	52	50	<b>33</b>
April	56	46	<b>29</b>
May	42	41	<b>28</b>
June	48	34	<b>38</b>
July	39	36	<b>28</b>
August	33	46	<b>34</b>
September	31	29	
October	30	27	
November	29	27	
December	11	12	

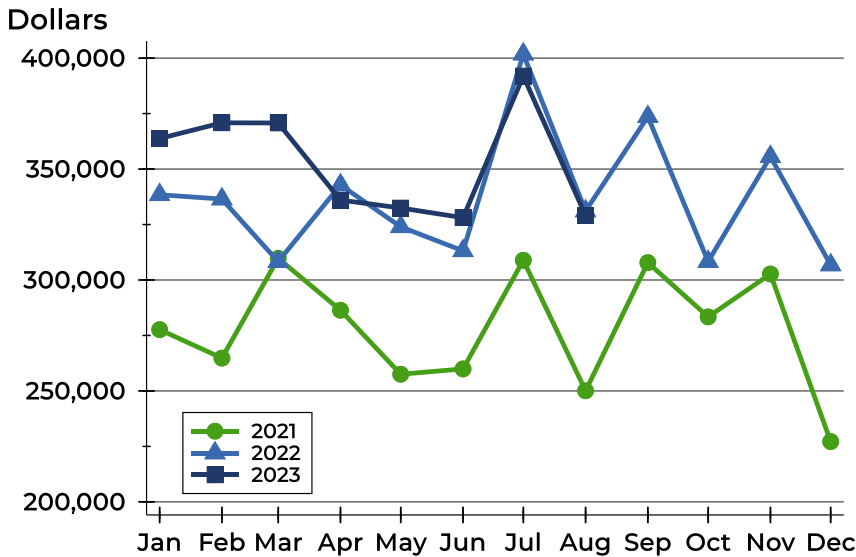
### New Listings by Price Range

Price Range	New Listings		List Price		Days on Market		Price as % of Orig.	
	Number	Percent	Average	Median	Avg.	Med.	Avg.	Med.
Below \$25,000	0	0.0%	N/A	N/A	N/A	N/A	N/A	N/A
\$25,000-\$49,999	0	0.0%	N/A	N/A	N/A	N/A	N/A	N/A
\$50,000-\$99,999	1	2.9%	79,000	79,000	9	9	100.0%	100.0%
\$100,000-\$124,999	1	2.9%	115,000	115,000	34	34	100.0%	100.0%
\$125,000-\$149,999	3	8.8%	137,967	135,000	17	20	96.2%	95.5%
\$150,000-\$174,999	0	0.0%	N/A	N/A	N/A	N/A	N/A	N/A
\$175,000-\$199,999	2	5.9%	187,450	187,450	16	16	95.1%	95.1%
\$200,000-\$249,999	4	11.8%	232,425	229,850	12	8	100.0%	100.0%
\$250,000-\$299,999	6	17.6%	263,333	267,500	16	12	99.7%	100.0%
\$300,000-\$399,999	9	26.5%	354,022	360,000	20	20	99.3%	100.0%
\$400,000-\$499,999	2	5.9%	440,950	440,950	6	6	100.0%	100.0%
\$500,000-\$749,999	6	17.6%	604,833	599,500	13	13	99.7%	100.0%
\$750,000-\$999,999	0	0.0%	N/A	N/A	N/A	N/A	N/A	N/A
\$1,000,000 and up	0	0.0%	N/A	N/A	N/A	N/A	N/A	N/A



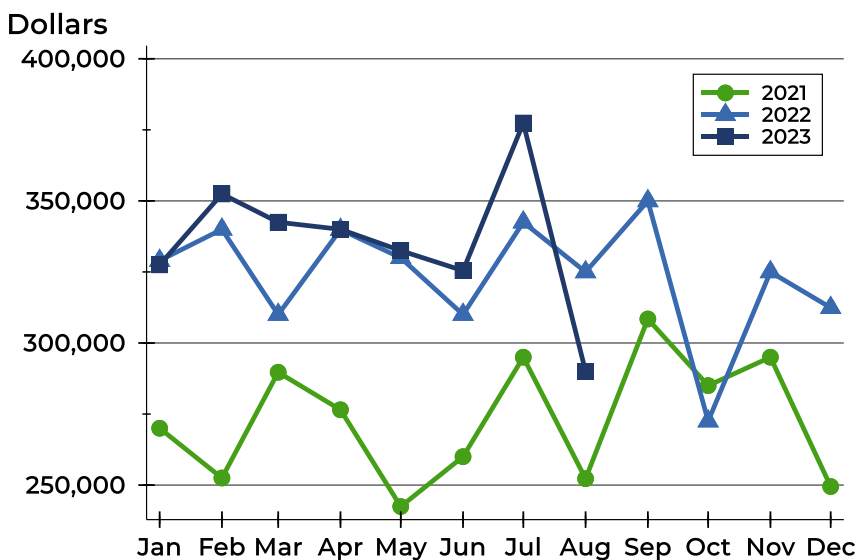
## Pottawatomie County New Listings Analysis

### Average Price



Month	2021	2022	2023
January	277,640	338,438	<b>363,783</b>
February	264,803	336,485	<b>370,848</b>
March	309,779	308,271	<b>370,785</b>
April	286,386	342,847	<b>336,028</b>
May	257,544	323,966	<b>332,450</b>
June	259,931	313,151	<b>328,076</b>
July	308,895	401,797	<b>391,932</b>
August	250,072	331,116	<b>329,106</b>
September	307,825	373,607	
October	283,383	308,297	
November	302,724	355,596	
December	227,186	306,771	

### Median Price



Month	2021	2022	2023
January	270,000	329,000	<b>327,500</b>
February	252,500	340,000	<b>352,450</b>
March	289,700	310,000	<b>342,500</b>
April	276,500	339,900	<b>340,000</b>
May	242,450	330,000	<b>332,500</b>
June	260,000	310,000	<b>325,450</b>
July	295,000	342,500	<b>377,400</b>
August	252,250	325,000	<b>290,000</b>
September	308,450	350,000	
October	285,000	272,500	
November	295,000	325,000	
December	249,500	312,425	

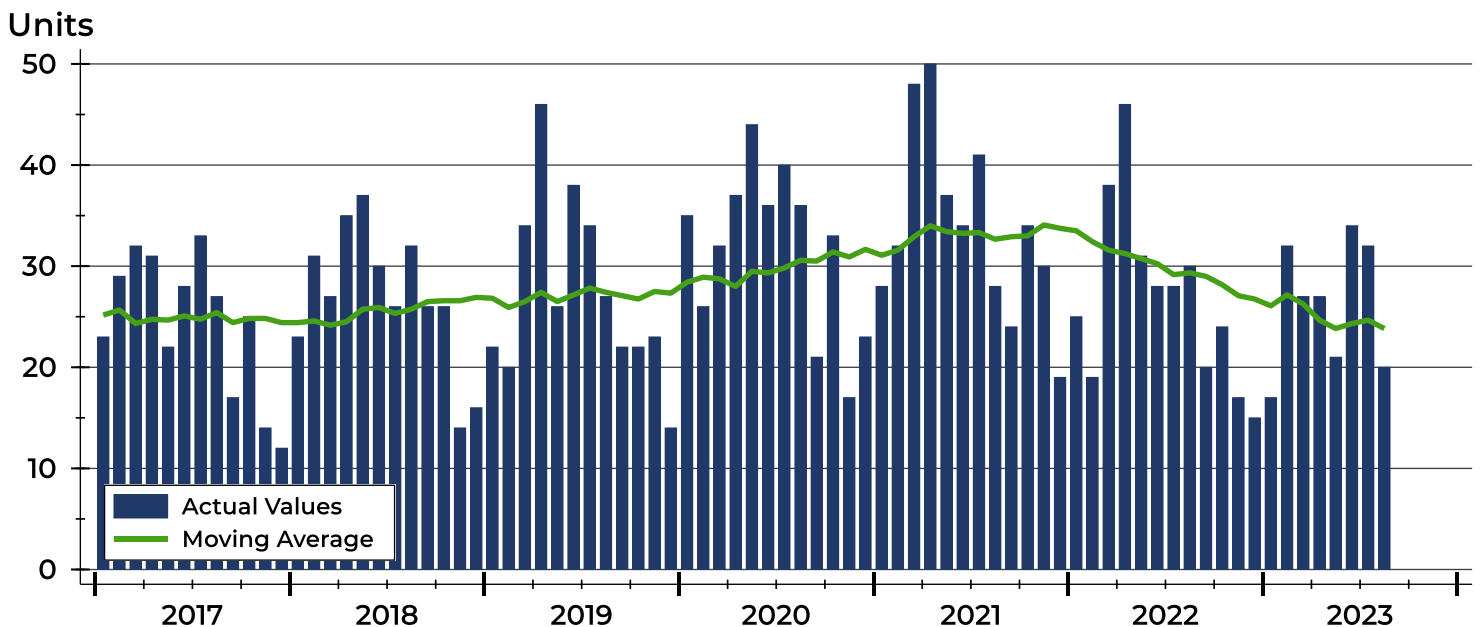


# Pottawatomie County Contracts Written Analysis

Summary Statistics for Contracts Written		2023	August 2022	Change	2023	Year-to-Date 2022	Change
Contracts Written		20	30	-33.3%	210	245	-14.3%
Volume (1,000s)		7,036	9,722	-27.6%	68,224	77,032	-11.4%
Average	Sale Price	351,789	324,068	8.6%	324,877	314,416	3.3%
	Days on Market	32	24	33.3%	45	24	87.5%
	Percent of Original	96.9%	96.3%	0.6%	97.8%	99.9%	-2.1%
Median	Sale Price	344,500	299,950	14.9%	330,000	319,900	3.2%
	Days on Market	19	18	5.6%	16	7	128.6%
	Percent of Original	100.0%	97.4%	2.7%	99.8%	100.0%	-0.2%

A total of 20 contracts for sale were written in Pottawatomie County during the month of August, down from 30 in 2022. The median list price of these homes was \$344,500, up from \$299,950 the prior year. Half of the homes that went under contract in August were on the market less than 19 days, compared to 18 days in August 2022.

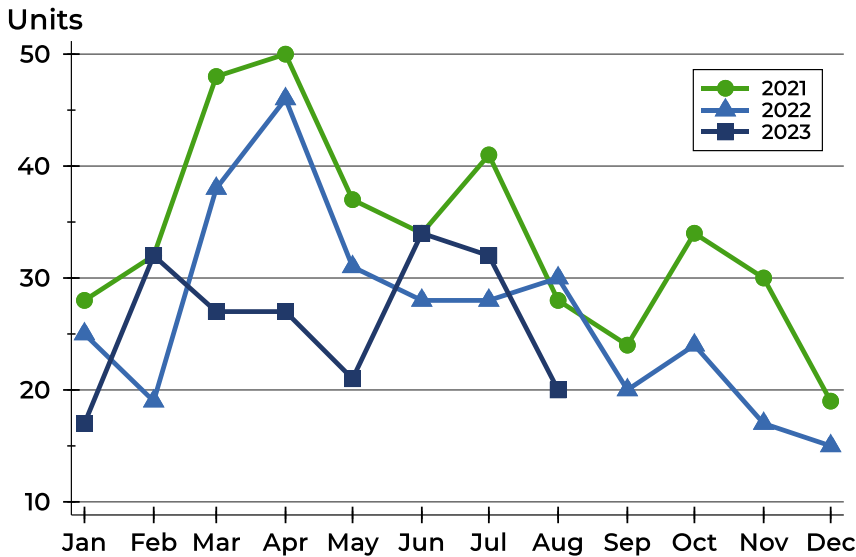
## History of Contracts Written





## Pottawatomie County Contracts Written Analysis

### Contracts Written by Month



Month	2021	2022	2023
January	28	25	17
February	32	19	32
March	48	38	27
April	50	46	27
May	37	31	21
June	34	28	34
July	41	28	32
August	28	30	20
September	24	20	
October	34	24	
November	30	17	
December	19	15	

### Contracts Written by Price Range

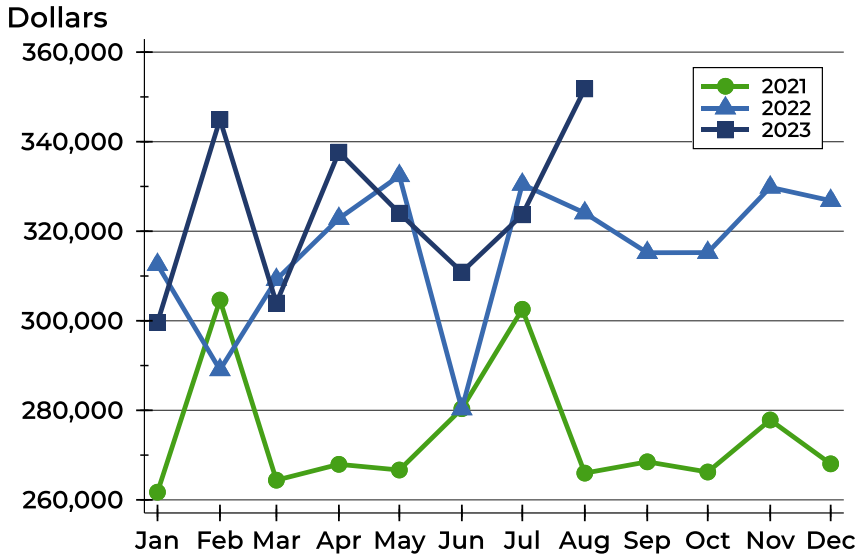
Price Range	Contracts Written		List Price		Days on Market		Price as % of Orig.	
	Number	Percent	Average	Median	Avg.	Med.	Avg.	Med.
Below \$25,000	0	0.0%	N/A	N/A	N/A	N/A	N/A	N/A
\$25,000-\$49,999	0	0.0%	N/A	N/A	N/A	N/A	N/A	N/A
\$50,000-\$99,999	2	10.0%	72,000	72,000	31	31	90.6%	90.6%
\$100,000-\$124,999	0	0.0%	N/A	N/A	N/A	N/A	N/A	N/A
\$125,000-\$149,999	1	5.0%	135,000	135,000	3	3	100.0%	100.0%
\$150,000-\$174,999	0	0.0%	N/A	N/A	N/A	N/A	N/A	N/A
\$175,000-\$199,999	1	5.0%	190,000	190,000	6	6	100.0%	100.0%
\$200,000-\$249,999	1	5.0%	225,000	225,000	4	4	100.0%	100.0%
\$250,000-\$299,999	1	5.0%	275,000	275,000	31	31	94.9%	94.9%
\$300,000-\$399,999	8	40.0%	344,475	344,500	35	22	96.2%	96.4%
\$400,000-\$499,999	2	10.0%	467,000	467,000	4	4	100.0%	100.0%
\$500,000-\$749,999	4	20.0%	594,244	582,500	63	37	97.9%	99.2%
\$750,000-\$999,999	0	0.0%	N/A	N/A	N/A	N/A	N/A	N/A
\$1,000,000 and up	0	0.0%	N/A	N/A	N/A	N/A	N/A	N/A





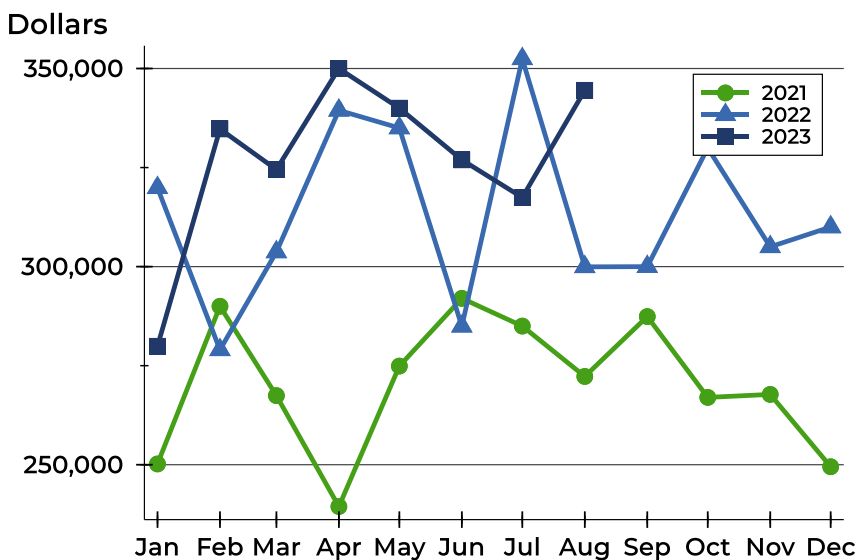
# Pottawatomie County Contracts Written Analysis

## Average Price



Month	2021	2022	2023
January	261,718	312,546	<b>299,594</b>
February	304,628	289,037	<b>344,978</b>
March	264,400	309,196	<b>303,959</b>
April	267,945	322,826	<b>337,663</b>
May	266,667	332,385	<b>324,033</b>
June	280,366	280,298	<b>310,883</b>
July	302,572	330,457	<b>323,669</b>
August	265,977	324,068	<b>351,789</b>
September	268,499	315,205	
October	266,221	315,234	
November	277,837	329,815	
December	268,045	326,840	

## Median Price

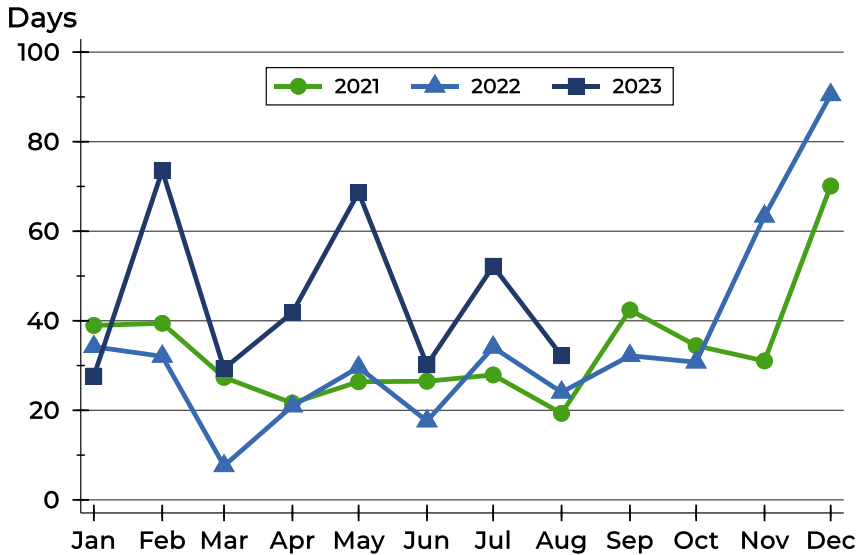


Month	2021	2022	2023
January	250,200	319,900	<b>279,900</b>
February	290,000	279,000	<b>334,750</b>
March	267,450	303,700	<b>324,500</b>
April	239,450	339,450	<b>350,000</b>
May	274,900	335,000	<b>340,000</b>
June	292,000	284,950	<b>326,950</b>
July	285,000	352,450	<b>317,450</b>
August	272,280	299,950	<b>344,500</b>
September	287,400	300,000	
October	267,000	329,950	
November	267,750	305,000	
December	249,500	310,000	



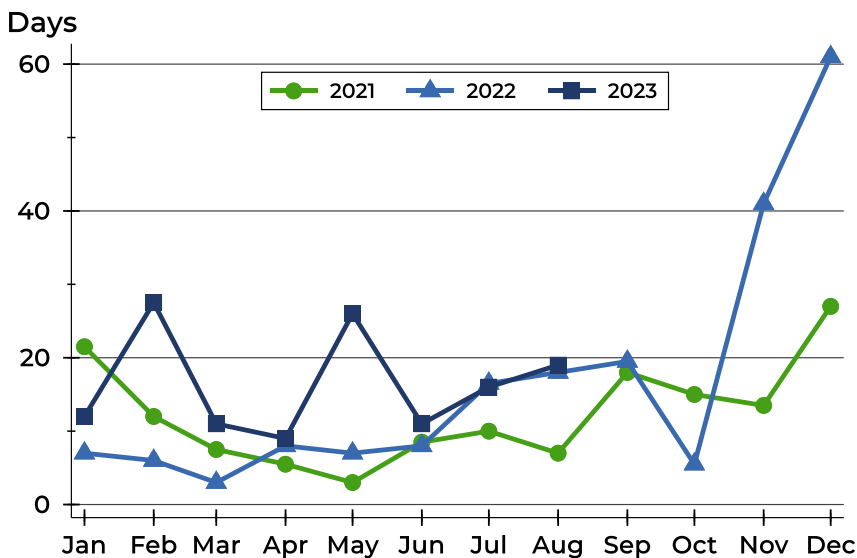
## Pottawatomie County Contracts Written Analysis

### Average DOM



Month	2021	2022	2023
January	39	34	<b>28</b>
February	39	32	<b>74</b>
March	27	8	<b>29</b>
April	22	21	<b>42</b>
May	26	30	<b>69</b>
June	27	18	<b>30</b>
July	28	34	<b>52</b>
August	19	24	<b>32</b>
September	42	32	
October	34	31	
November	31	63	
December	70	90	

### Median DOM



Month	2021	2022	2023
January	22	7	<b>12</b>
February	12	6	<b>28</b>
March	8	3	<b>11</b>
April	6	8	<b>9</b>
May	3	7	<b>26</b>
June	9	8	<b>11</b>
July	10	17	<b>16</b>
August	7	18	<b>19</b>
September	18	20	
October	15	6	
November	14	41	
December	27	61	



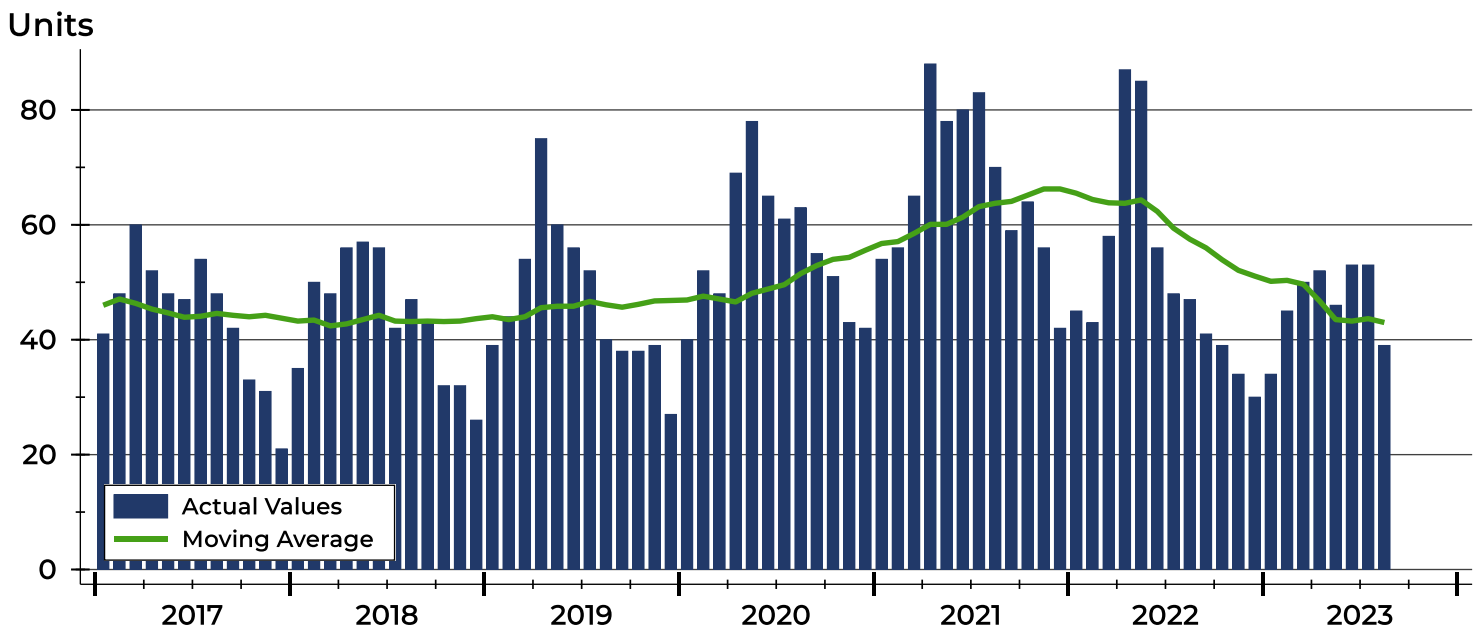
# Pottawatomie County Pending Contracts Analysis

Summary Statistics for Pending Contracts		2023	End of August 2022	Change
Pending Contracts		39	47	-17.0%
Volume (1,000s)		13,132	14,431	-9.0%
Average	List Price	336,728	307,048	9.7%
	Days on Market	38	31	22.6%
	Percent of Original	97.4%	99.6%	-2.2%
Median	List Price	325,000	289,900	12.1%
	Days on Market	21	19	10.5%
	Percent of Original	100.0%	100.0%	0.0%

A total of 39 listings in Pottawatomie County had contracts pending at the end of August, down from 47 contracts pending at the end of August 2022.

Pending contracts reflect listings with a contract in place at the end of the month. In contrast, contracts written measures the number of listings put under contract during the month.

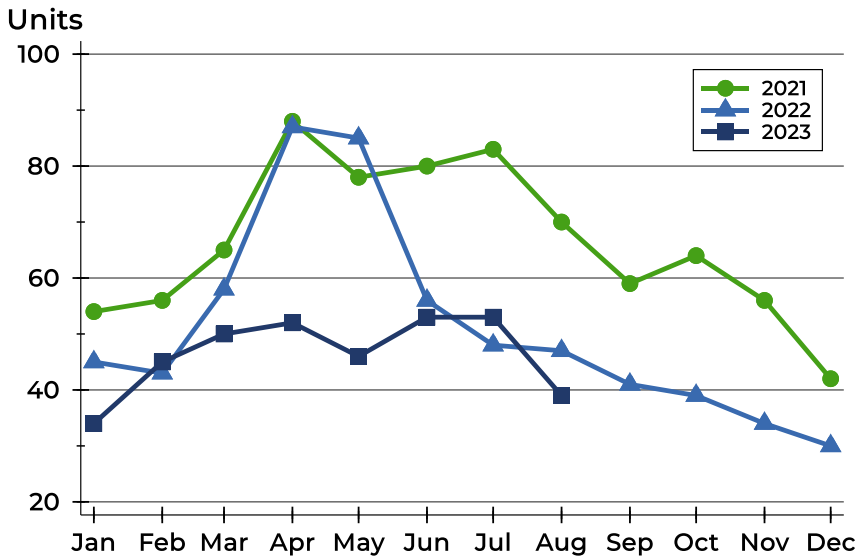
## History of Pending Contracts





## Pottawatomie County Pending Contracts Analysis

### Pending Contracts by Month



Month	2021	2022	2023
January	54	45	<b>34</b>
February	56	43	<b>45</b>
March	65	58	<b>50</b>
April	88	87	<b>52</b>
May	78	85	<b>46</b>
June	80	56	<b>53</b>
July	83	48	<b>53</b>
August	70	47	<b>39</b>
September	59	41	
October	64	39	
November	56	34	
December	42	30	

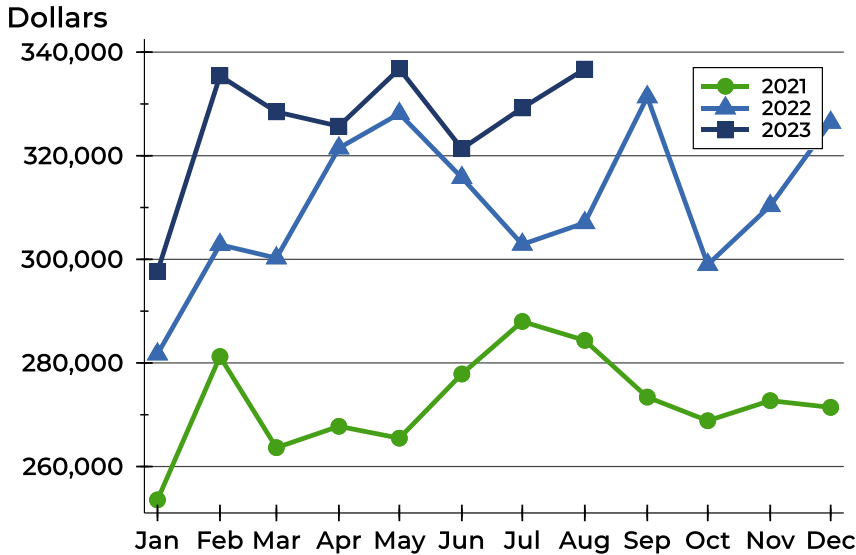
### Pending Contracts by Price Range

Price Range	Pending Contracts		List Price		Days on Market		Price as % of Orig.	
	Number	Percent	Average	Median	Avg.	Med.	Avg.	Med.
Below \$25,000	0	0.0%	N/A	N/A	N/A	N/A	N/A	N/A
\$25,000-\$49,999	0	0.0%	N/A	N/A	N/A	N/A	N/A	N/A
\$50,000-\$99,999	2	5.1%	72,000	72,000	31	31	90.6%	90.6%
\$100,000-\$124,999	0	0.0%	N/A	N/A	N/A	N/A	N/A	N/A
\$125,000-\$149,999	2	5.1%	130,000	130,000	41	41	91.7%	91.7%
\$150,000-\$174,999	1	2.6%	154,900	154,900	4	4	100.0%	100.0%
\$175,000-\$199,999	1	2.6%	190,000	190,000	6	6	100.0%	100.0%
\$200,000-\$249,999	5	12.8%	230,460	229,500	16	4	100.0%	100.0%
\$250,000-\$299,999	5	12.8%	270,000	275,000	30	34	103.7%	100.0%
\$300,000-\$399,999	14	35.9%	350,300	347,500	44	38	94.8%	98.6%
\$400,000-\$499,999	3	7.7%	448,667	459,000	70	4	98.6%	100.0%
\$500,000-\$749,999	6	15.4%	605,163	584,500	44	14	98.6%	100.0%
\$750,000-\$999,999	0	0.0%	N/A	N/A	N/A	N/A	N/A	N/A
\$1,000,000 and up	0	0.0%	N/A	N/A	N/A	N/A	N/A	N/A



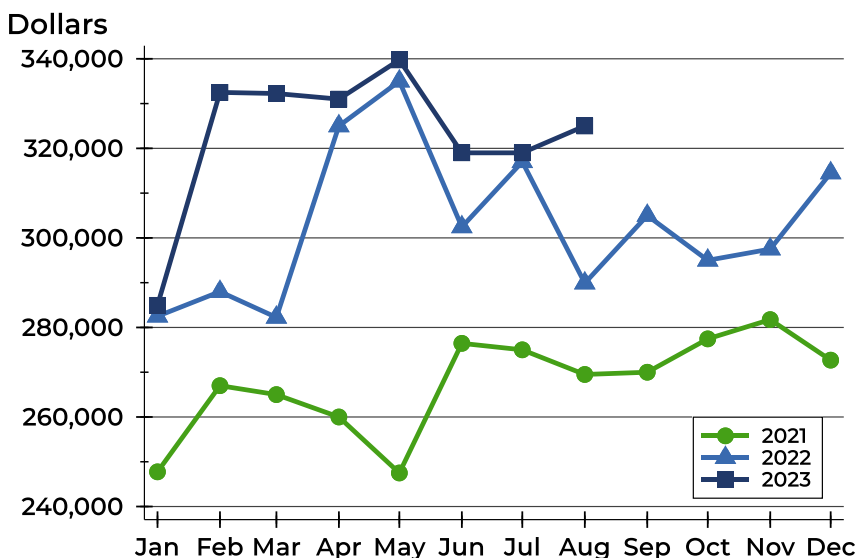
## Pottawatomie County Pending Contracts Analysis

### Average Price



Month	2021	2022	2023
January	253,565	281,700	<b>297,634</b>
February	281,241	302,832	<b>335,418</b>
March	263,641	300,248	<b>328,472</b>
April	267,766	321,471	<b>325,708</b>
May	265,473	328,125	<b>336,778</b>
June	277,862	315,771	<b>321,353</b>
July	288,006	302,886	<b>329,236</b>
August	284,350	307,048	<b>336,728</b>
September	273,403	331,346	
October	268,839	298,977	
November	272,718	310,334	
December	271,423	326,423	

### Median Price

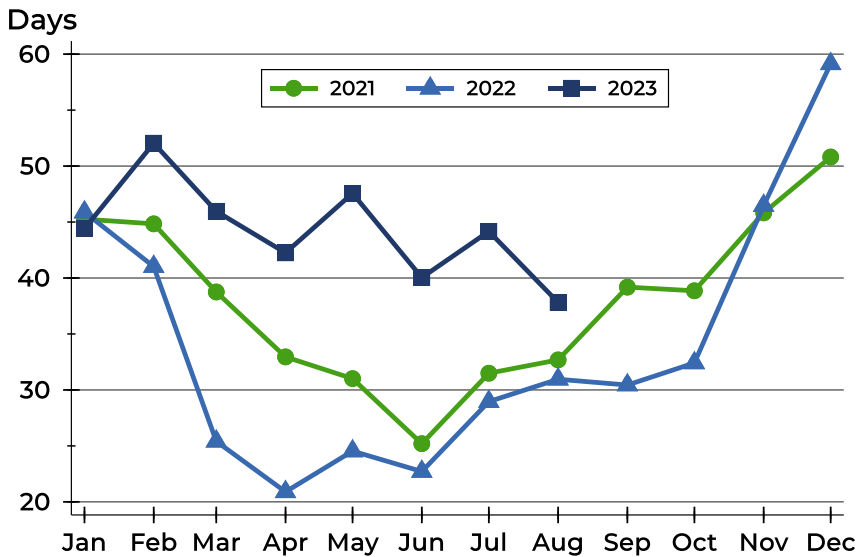


Month	2021	2022	2023
January	247,750	282,500	<b>284,950</b>
February	267,000	288,000	<b>332,500</b>
March	265,000	282,250	<b>332,250</b>
April	260,000	325,000	<b>331,000</b>
May	247,500	335,000	<b>339,750</b>
June	276,450	302,450	<b>319,000</b>
July	275,000	317,000	<b>319,000</b>
August	269,500	289,900	<b>325,000</b>
September	270,000	305,000	
October	277,450	295,000	
November	281,750	297,500	
December	272,700	314,500	



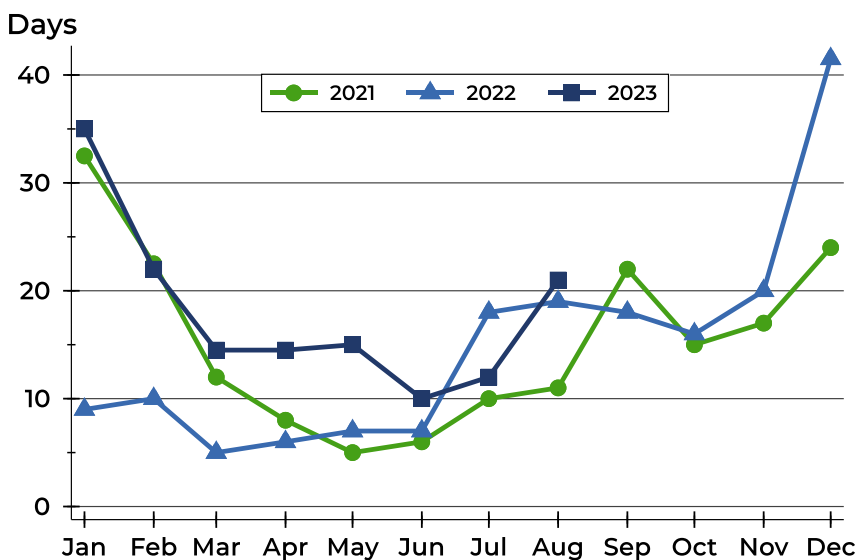
## Pottawatomie County Pending Contracts Analysis

### Average DOM



Month	2021	2022	2023
January	45	46	<b>44</b>
February	45	41	<b>52</b>
March	39	25	<b>46</b>
April	33	21	<b>42</b>
May	31	25	<b>48</b>
June	25	23	<b>40</b>
July	31	29	<b>44</b>
August	33	31	<b>38</b>
September	39	30	
October	39	32	
November	46	46	
December	51	59	

### Median DOM



Month	2021	2022	2023
January	33	9	<b>35</b>
February	23	10	<b>22</b>
March	12	5	<b>15</b>
April	8	6	<b>15</b>
May	5	7	<b>15</b>
June	6	7	<b>10</b>
July	10	18	<b>12</b>
August	11	19	<b>21</b>
September	22	18	
October	15	16	
November	17	20	
December	24	42	