



## Pottawatomie County Housing Report



### Market Overview

#### Pottawatomie County Home Sales Fell in September

Total home sales in Pottawatomie County fell last month to 22 units, compared to 26 units in September 2022. Total sales volume was \$7.3 million, down from a year earlier.

The median sale price in September was \$335,000, up from \$264,000 a year earlier. Homes that sold in September were typically on the market for 27 days and sold for 100.0% of their list prices.

#### Pottawatomie County Active Listings Down at End of September

The total number of active listings in Pottawatomie County at the end of September was 52 units, down from 61 at the same point in 2022. This represents a 2.2 months' supply of homes available for sale. The median list price of homes on the market at the end of September was \$344,750.

During September, a total of 29 contracts were written up from 20 in September 2022. At the end of the month, there were 42 contracts still pending.

### Report Contents

- Summary Statistics – Page 2
- Closed Listing Analysis – Page 3
- Active Listings Analysis – Page 7
- Months' Supply Analysis – Page 11
- New Listings Analysis – Page 12
- Contracts Written Analysis – Page 15
- Pending Contracts Analysis – Page 19

### Contact Information

Margaret Pendleton, Association Executive  
 Flint Hills Association of REALTORS®  
 205 S. Seth Child Road  
 Manhattan, KS 66502  
 785-776-1203  
[ae@flinthillsrealtors.net](mailto:ae@flinthillsrealtors.net)  
[www.flinthillsrealtors.net](http://www.flinthillsrealtors.net)



## Pottawatomie County Summary Statistics

September MLS Statistics Three-year History		Current Month			Year-to-Date		
		2023	2022	2021	2023	2022	2021
<b>Home Sales</b>		<b>22</b>	<b>26</b>	<b>32</b>	<b>225</b>	<b>269</b>	<b>305</b>
Change from prior year		-15.4%	-18.8%	0.0%	-16.4%	-11.8%	9.3%
<b>Active Listings</b>		<b>52</b>	<b>61</b>	<b>47</b>	<b>N/A</b>	<b>N/A</b>	<b>N/A</b>
Change from prior year		-14.8%	29.8%	11.9%			
<b>Months' Supply</b>		<b>2.2</b>	<b>2.0</b>	<b>1.4</b>	<b>N/A</b>	<b>N/A</b>	<b>N/A</b>
Change from prior year		10.0%	42.9%	0.0%			
<b>New Listings</b>		<b>26</b>	<b>29</b>	<b>31</b>	<b>287</b>	<b>343</b>	<b>356</b>
Change from prior year		-10.3%	-6.5%	0.0%	-16.3%	-3.7%	5.0%
<b>Contracts Written</b>		<b>29</b>	<b>20</b>	<b>24</b>	<b>237</b>	<b>265</b>	<b>322</b>
Change from prior year		45.0%	-16.7%	14.3%	-10.6%	-17.7%	4.9%
<b>Pending Contracts</b>		<b>42</b>	<b>41</b>	<b>59</b>	<b>N/A</b>	<b>N/A</b>	<b>N/A</b>
Change from prior year		2.4%	-30.5%	7.3%			
<b>Sales Volume (1,000s)</b>		<b>7,323</b>	<b>7,641</b>	<b>8,868</b>	<b>72,416</b>	<b>83,406</b>	<b>82,494</b>
Change from prior year		-4.2%	-13.8%	10.5%	-13.2%	1.1%	17.3%
Average	<b>Sale Price</b>	<b>332,848</b>	<b>293,881</b>	<b>277,140</b>	<b>321,847</b>	<b>310,060</b>	<b>270,472</b>
	Change from prior year	13.3%	6.0%	10.5%	3.8%	14.6%	7.3%
	<b>List Price of Actives</b>	<b>380,967</b>	<b>379,030</b>	<b>277,430</b>	<b>N/A</b>	<b>N/A</b>	<b>N/A</b>
	Change from prior year	0.5%	36.6%	6.2%			
	<b>Days on Market</b>	<b>42</b>	<b>19</b>	<b>27</b>	<b>48</b>	<b>24</b>	<b>32</b>
Change from prior year	121.1%	-29.6%	-43.8%	100.0%	-25.0%	-34.7%	
	<b>Percent of List</b>	<b>97.7%</b>	<b>98.3%</b>	<b>100.0%</b>	<b>99.3%</b>	<b>100.4%</b>	<b>99.9%</b>
Change from prior year		-0.6%	-1.7%	0.0%	-1.1%	0.5%	1.0%
	<b>Percent of Original</b>	<b>93.2%</b>	<b>97.7%</b>	<b>99.2%</b>	<b>97.4%</b>	<b>99.9%</b>	<b>99.1%</b>
Change from prior year		-4.6%	-1.5%	0.7%	-2.5%	0.8%	1.7%
Median	<b>Sale Price</b>	<b>335,000</b>	<b>264,000</b>	<b>271,500</b>	<b>325,000</b>	<b>315,000</b>	<b>269,000</b>
	Change from prior year	26.9%	-2.8%	5.8%	3.2%	17.1%	8.9%
	<b>List Price of Actives</b>	<b>344,750</b>	<b>349,000</b>	<b>285,000</b>	<b>N/A</b>	<b>N/A</b>	<b>N/A</b>
	Change from prior year	-1.2%	22.5%	10.9%			
	<b>Days on Market</b>	<b>27</b>	<b>13</b>	<b>11</b>	<b>16</b>	<b>7</b>	<b>8</b>
Change from prior year	107.7%	18.2%	-60.7%	128.6%	-12.5%	-65.2%	
	<b>Percent of List</b>	<b>100.0%</b>	<b>97.9%</b>	<b>100.0%</b>	<b>100.0%</b>	<b>100.0%</b>	<b>100.0%</b>
Change from prior year		2.1%	-2.1%	0.0%	0.0%	0.0%	0.4%
	<b>Percent of Original</b>	<b>97.9%</b>	<b>97.5%</b>	<b>99.1%</b>	<b>99.3%</b>	<b>100.0%</b>	<b>100.0%</b>
Change from prior year		0.4%	-1.6%	-0.6%	-0.7%	0.0%	1.1%

Note: Year-to-date statistics cannot be calculated for Active Listings, Months' Supply and Pending Contracts.



## Pottawatomie County Closed Listings Analysis

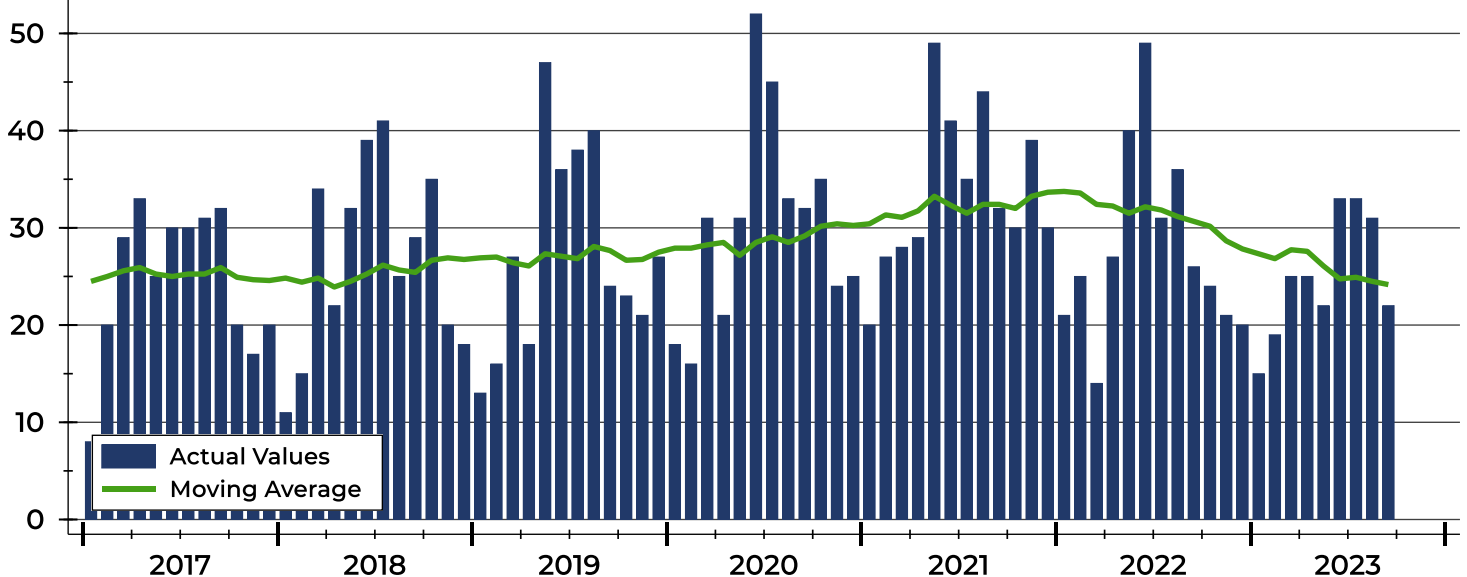
Summary Statistics for Closed Listings		September			Year-to-Date		
		2023	2022	Change	2023	2022	Change
Closed Listings		22	26	-15.4%	225	269	-16.4%
Volume (1,000s)		7,323	7,641	-4.2%	72,416	83,406	-13.2%
Months' Supply		2.2	2.0	10.0%	N/A	N/A	N/A
Average	Sale Price	332,848	293,881	13.3%	321,847	310,060	3.8%
	Days on Market	42	19	121.1%	48	24	100.0%
	Percent of List	97.7%	98.3%	-0.6%	99.3%	100.4%	-1.1%
	Percent of Original	93.2%	97.7%	-4.6%	97.4%	99.9%	-2.5%
Median	Sale Price	335,000	264,000	26.9%	325,000	315,000	3.2%
	Days on Market	27	13	107.7%	16	7	128.6%
	Percent of List	100.0%	97.9%	2.1%	100.0%	100.0%	0.0%
	Percent of Original	97.9%	97.5%	0.4%	99.3%	100.0%	-0.7%

A total of 22 homes sold in Pottawatomie County in September, down from 26 units in September 2022. Total sales volume fell to \$7.3 million compared to \$7.6 million in the previous year.

The median sales price in September was \$335,000, up 26.9% compared to the prior year. Median days on market was 27 days, up from 12 days in August, and up from 13 in September 2022.

## History of Closed Listings

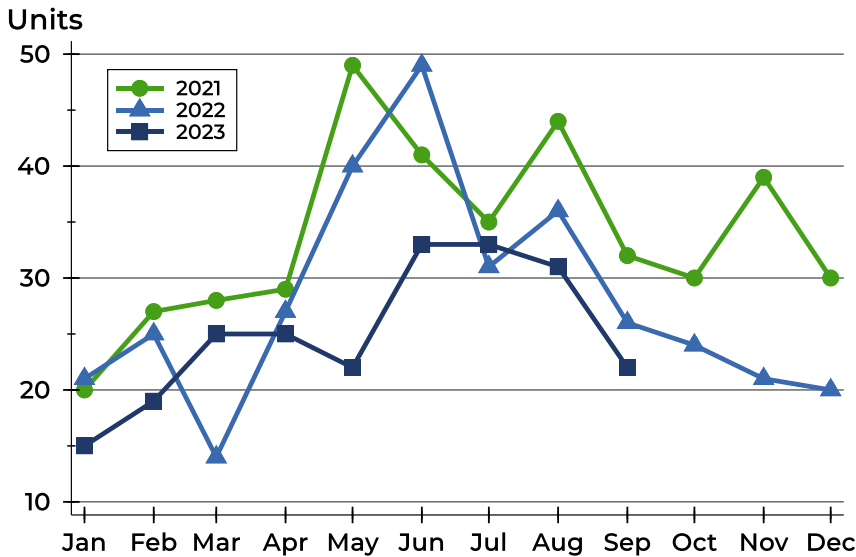
Units





## Pottawatomie County Closed Listings Analysis

### Closed Listings by Month



Month	2021	2022	2023
January	20	21	15
February	27	25	19
March	28	14	25
April	29	27	25
May	49	40	22
June	41	49	33
July	35	31	33
August	44	36	31
September	32	26	22
October	30	24	
November	39	21	
December	30	20	

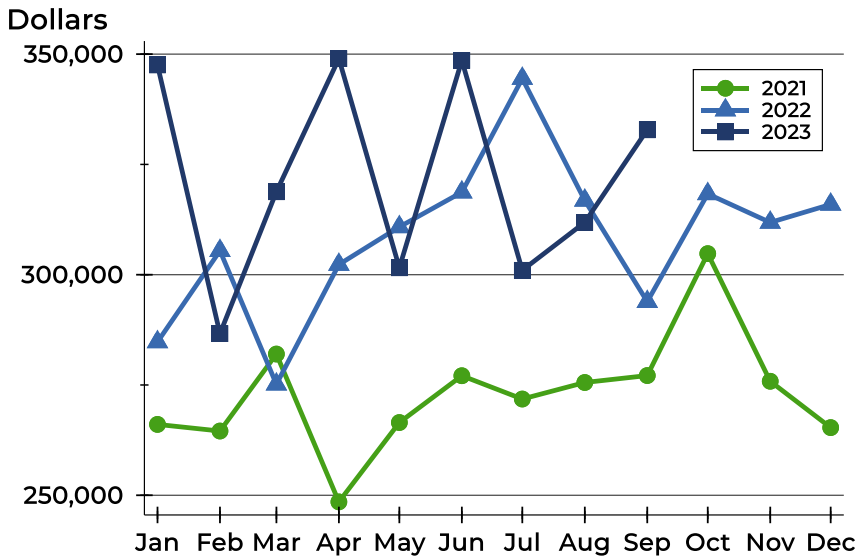
### Closed Listings by Price Range

Price Range	Sales		Months' Supply	Sale Price		Days on Market		Price as % of List		Price as % of Orig.	
	Number	Percent		Average	Median	Avg.	Med.	Avg.	Med.	Avg.	Med.
Below \$25,000	0	0.0%	N/A	N/A	N/A	N/A	N/A	N/A	N/A	N/A	N/A
\$25,000-\$49,999	0	0.0%	N/A	N/A	N/A	N/A	N/A	N/A	N/A	N/A	N/A
\$50,000-\$99,999	2	9.1%	1.7	67,000	67,000	31	31	92.9%	92.9%	84.3%	84.3%
\$100,000-\$124,999	0	0.0%	N/A	N/A	N/A	N/A	N/A	N/A	N/A	N/A	N/A
\$125,000-\$149,999	1	4.5%	4.5	142,000	142,000	3	3	105.2%	105.2%	105.2%	105.2%
\$150,000-\$174,999	1	4.5%	2.2	160,000	160,000	4	4	103.3%	103.3%	103.3%	103.3%
\$175,000-\$199,999	0	0.0%	0.9	N/A	N/A	N/A	N/A	N/A	N/A	N/A	N/A
\$200,000-\$249,999	0	0.0%	N/A	N/A	N/A	N/A	N/A	N/A	N/A	N/A	N/A
\$250,000-\$299,999	4	18.2%	1.4	281,188	282,250	47	36	92.7%	96.2%	84.7%	93.7%
\$300,000-\$399,999	10	45.5%	1.7	348,140	343,250	40	40	99.1%	100.0%	96.4%	99.3%
\$400,000-\$499,999	1	4.5%	1.9	463,500	463,500	3	3	101.0%	101.0%	101.0%	101.0%
\$500,000-\$749,999	3	13.6%	5.7	605,667	592,000	84	75	97.8%	100.0%	90.2%	86.8%
\$750,000-\$999,999	0	0.0%	N/A	N/A	N/A	N/A	N/A	N/A	N/A	N/A	N/A
\$1,000,000 and up	0	0.0%	N/A	N/A	N/A	N/A	N/A	N/A	N/A	N/A	N/A



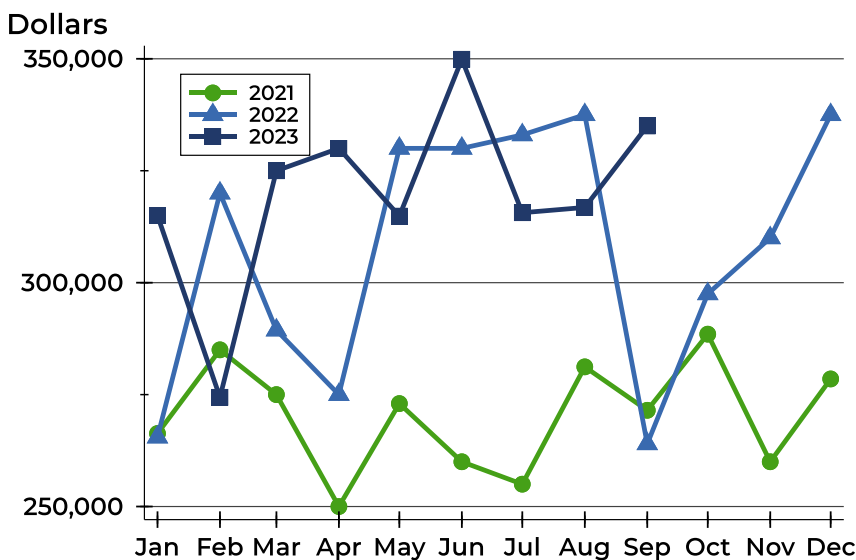
## Pottawatomie County Closed Listings Analysis

### Average Price



Month	2021	2022	2023
January	266,064	284,752	<b>347,548</b>
February	264,562	305,443	<b>286,647</b>
March	282,018	275,167	<b>318,804</b>
April	248,504	302,308	<b>348,976</b>
May	266,490	310,831	<b>301,576</b>
June	277,099	318,706	<b>348,576</b>
July	271,821	344,468	<b>301,005</b>
August	275,567	316,847	<b>311,874</b>
September	277,140	293,881	<b>332,848</b>
October	304,775	318,325	
November	275,848	311,843	
December	265,343	315,935	

### Median Price

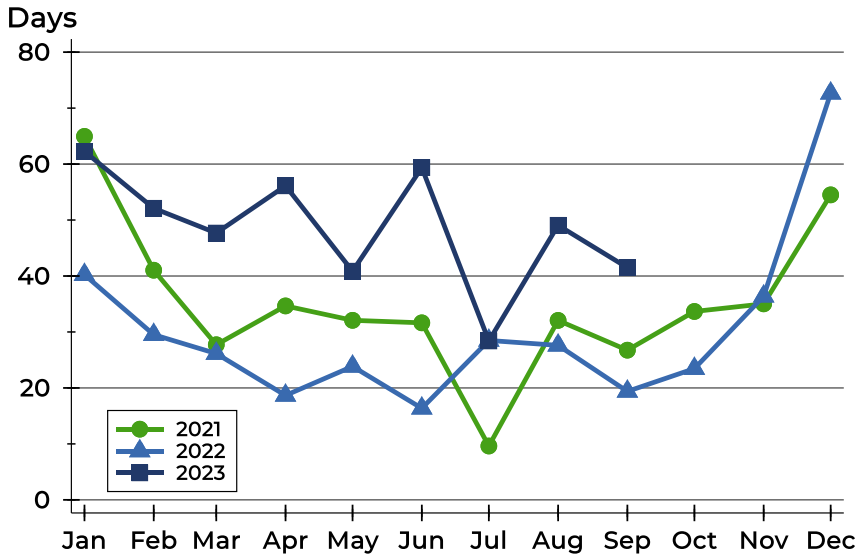


Month	2021	2022	2023
January	266,314	265,500	<b>315,000</b>
February	285,000	320,000	<b>274,400</b>
March	275,000	289,400	<b>325,000</b>
April	250,000	275,000	<b>330,000</b>
May	273,000	330,000	<b>314,875</b>
June	260,000	330,000	<b>349,900</b>
July	255,000	333,000	<b>315,626</b>
August	281,200	337,500	<b>316,806</b>
September	271,500	264,000	<b>335,000</b>
October	288,500	297,500	
November	260,000	310,000	
December	278,500	337,500	



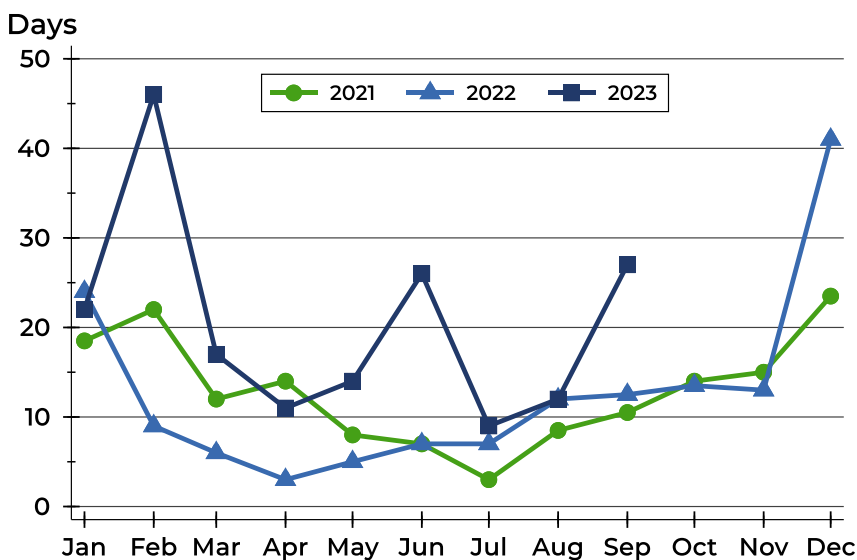
## Pottawatomie County Closed Listings Analysis

### Average DOM



Month	2021	2022	2023
January	65	40	<b>62</b>
February	41	30	<b>52</b>
March	28	26	<b>48</b>
April	35	19	<b>56</b>
May	32	24	<b>41</b>
June	32	16	<b>59</b>
July	10	28	<b>28</b>
August	32	28	<b>49</b>
September	27	19	<b>42</b>
October	34	23	
November	35	36	
December	55	73	

### Median DOM



Month	2021	2022	2023
January	19	24	<b>22</b>
February	22	9	<b>46</b>
March	12	6	<b>17</b>
April	14	3	<b>11</b>
May	8	5	<b>14</b>
June	7	7	<b>26</b>
July	3	7	<b>9</b>
August	9	12	<b>12</b>
September	11	13	<b>27</b>
October	14	14	
November	15	13	
December	24	41	



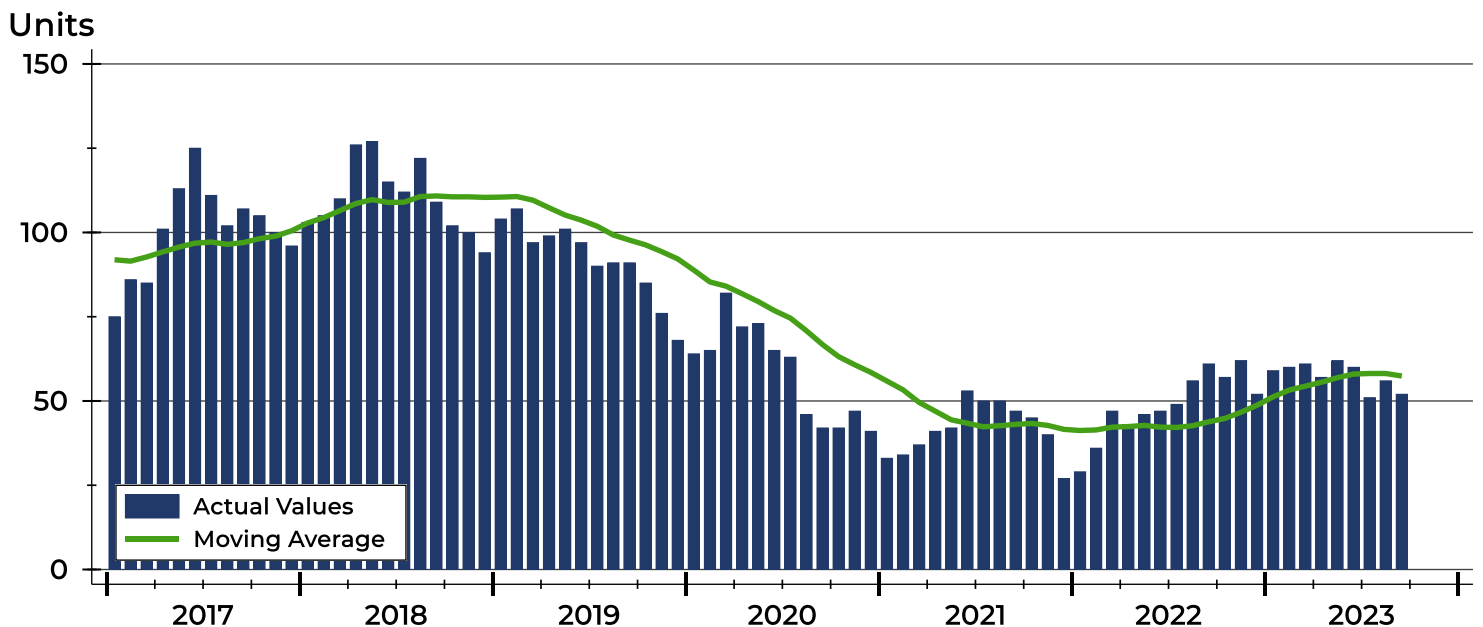
## Pottawatomie County Active Listings Analysis

Summary Statistics for Active Listings		End of September		
		2023	2022	Change
Active Listings		<b>52</b>	61	-14.8%
Volume (1,000s)		<b>19,810</b>	23,121	-14.3%
Months' Supply		<b>2.2</b>	2.0	10.0%
Average	List Price	<b>380,967</b>	379,030	0.5%
	Days on Market	<b>54</b>	75	-28.0%
	Percent of Original	<b>97.7%</b>	98.0%	-0.3%
Median	List Price	<b>344,750</b>	349,000	-1.2%
	Days on Market	<b>39</b>	51	-23.5%
	Percent of Original	<b>100.0%</b>	100.0%	0.0%

A total of 52 homes were available for sale in Pottawatomie County at the end of September. This represents a 2.2 months' supply of active listings.

The median list price of homes on the market at the end of September was \$344,750, down 1.2% from 2022. The typical time on market for active listings was 39 days, down from 51 days a year earlier.

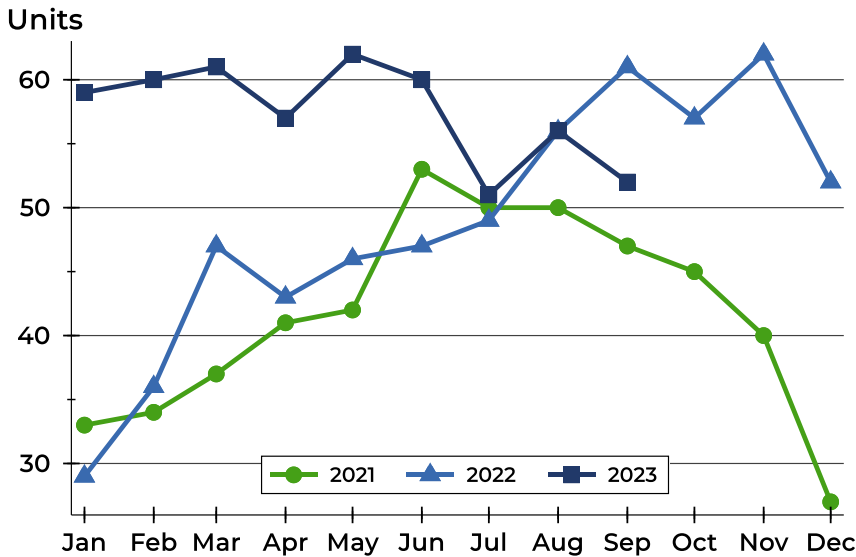
## History of Active Listings





## Pottawatomie County Active Listings Analysis

### Active Listings by Month



Month	2021	2022	2023
January	33	29	59
February	34	36	60
March	37	47	61
April	41	43	57
May	42	46	62
June	53	47	60
July	50	49	51
August	50	56	56
September	47	61	52
October	45	57	40
November	40	62	27
December	27	52	27

### Active Listings by Price Range

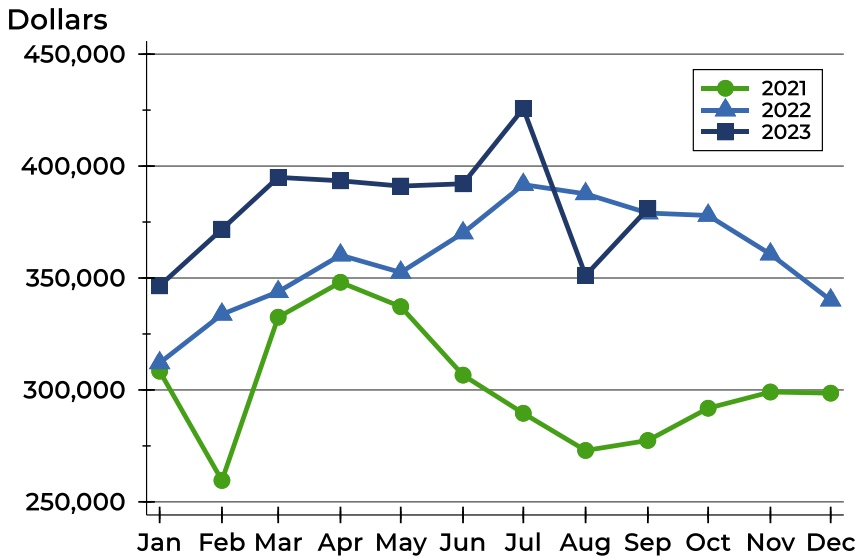
Price Range	Active Listings Number	Active Listings Percent	Months' Supply	List Price Average	List Price Median	Days on Market Avg.	Days on Market Med.	Price as % of Orig. Avg.	Price as % of Orig. Med.
Below \$25,000	0	0.0%	N/A	N/A	N/A	N/A	N/A	N/A	N/A
\$25,000-\$49,999	0	0.0%	N/A	N/A	N/A	N/A	N/A	N/A	N/A
\$50,000-\$99,999	1	1.9%	1.7	75,000	75,000	100	100	65.2%	65.2%
\$100,000-\$124,999	0	0.0%	N/A	N/A	N/A	N/A	N/A	N/A	N/A
\$125,000-\$149,999	3	5.8%	4.5	131,300	129,900	36	44	94.1%	95.5%
\$150,000-\$174,999	3	5.8%	2.2	169,267	170,000	58	31	100.0%	100.0%
\$175,000-\$199,999	1	1.9%	0.9	184,900	184,900	49	49	90.2%	90.2%
\$200,000-\$249,999	6	11.5%	N/A	218,200	217,500	23	32	98.7%	99.4%
\$250,000-\$299,999	6	11.5%	1.4	280,800	279,950	72	39	98.9%	100.0%
\$300,000-\$399,999	15	28.8%	1.7	358,860	364,900	62	53	98.0%	100.0%
\$400,000-\$499,999	5	9.6%	1.9	421,780	420,000	69	86	98.6%	100.0%
\$500,000-\$749,999	10	19.2%	5.7	601,790	605,000	38	35	99.5%	100.0%
\$750,000-\$999,999	1	1.9%	N/A	895,000	895,000	68	68	100.0%	100.0%
\$1,000,000 and up	1	1.9%	N/A	1,250,000	1,250,000	100	100	100.0%	100.0%





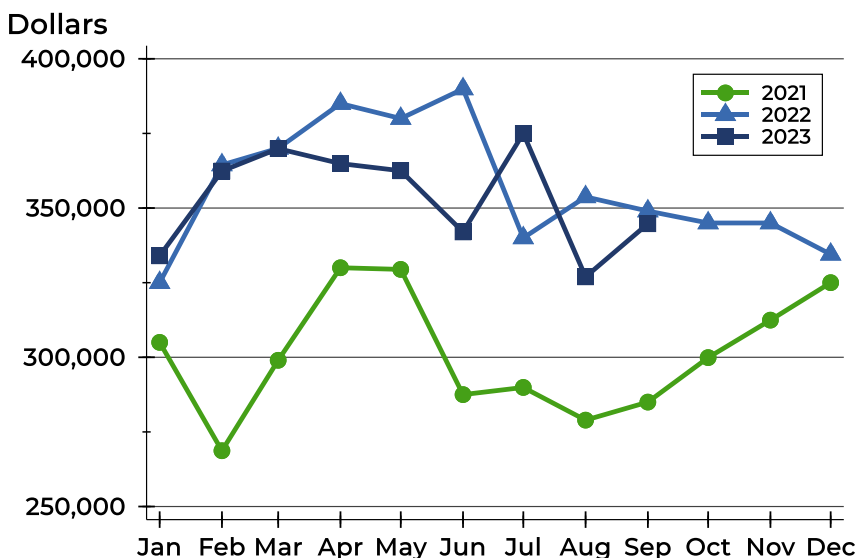
## Pottawatomie County Active Listings Analysis

### Average Price



Month	2021	2022	2023
<b>January</b>	308,385	312,066	<b>346,498</b>
<b>February</b>	259,565	333,767	<b>371,789</b>
<b>March</b>	332,489	343,857	<b>394,956</b>
<b>April</b>	348,095	360,213	<b>393,429</b>
<b>May</b>	337,200	352,492	<b>391,065</b>
<b>June</b>	306,614	370,121	<b>392,093</b>
<b>July</b>	289,574	391,716	<b>425,723</b>
<b>August</b>	272,958	387,600	<b>351,161</b>
<b>September</b>	277,430	379,030	<b>380,967</b>
<b>October</b>	291,840	377,949	
<b>November</b>	299,078	360,668	
<b>December</b>	298,563	340,103	

### Median Price

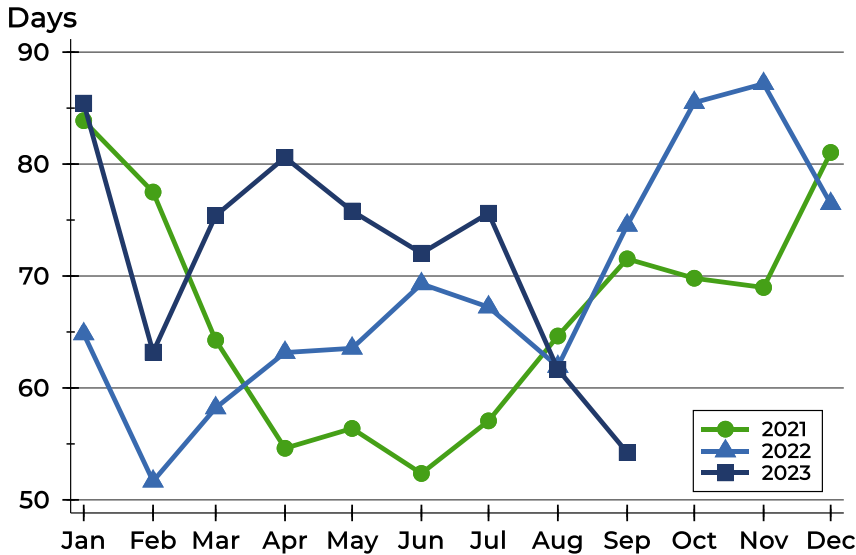


Month	2021	2022	2023
<b>January</b>	305,000	325,000	<b>334,000</b>
<b>February</b>	268,700	364,450	<b>362,400</b>
<b>March</b>	299,000	370,000	<b>369,900</b>
<b>April</b>	330,000	385,000	<b>364,900</b>
<b>May</b>	329,450	380,000	<b>362,500</b>
<b>June</b>	287,500	389,900	<b>342,000</b>
<b>July</b>	289,900	340,000	<b>375,000</b>
<b>August</b>	278,950	353,750	<b>326,950</b>
<b>September</b>	285,000	349,000	<b>344,750</b>
<b>October</b>	299,900	345,000	
<b>November</b>	312,450	345,000	
<b>December</b>	325,000	334,500	



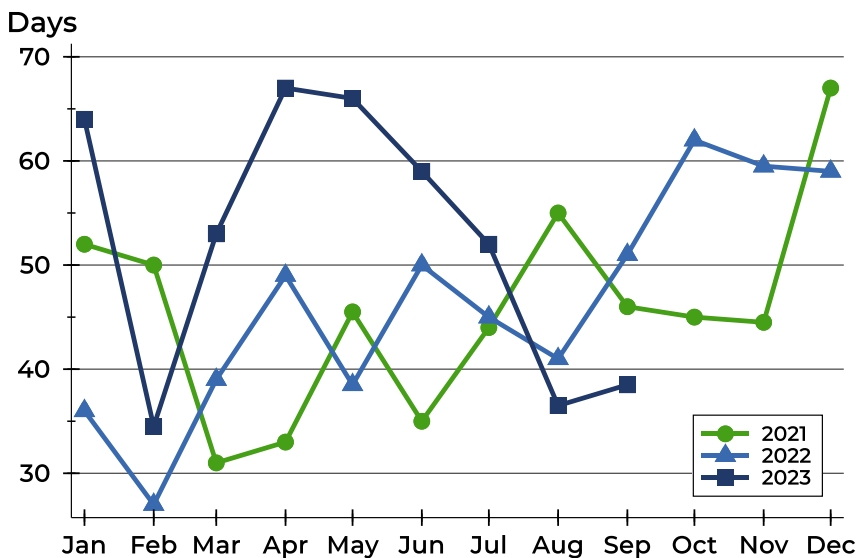
## Pottawatomie County Active Listings Analysis

### Average DOM



Month	2021	2022	2023
January	84	65	<b>85</b>
February	78	52	<b>63</b>
March	64	58	<b>75</b>
April	55	63	<b>81</b>
May	56	64	<b>76</b>
June	52	69	<b>72</b>
July	57	67	<b>76</b>
August	65	62	<b>62</b>
September	72	75	<b>54</b>
October	70	85	
November	69	87	
December	81	76	

### Median DOM

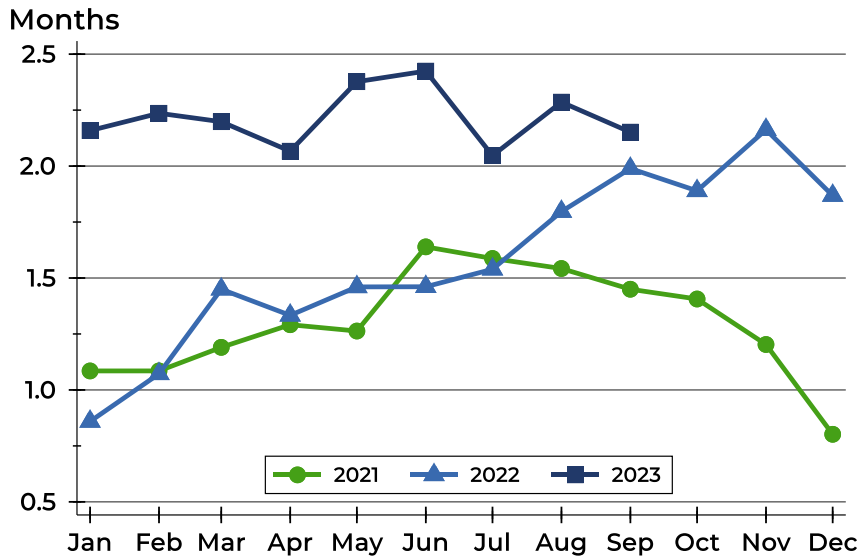


Month	2021	2022	2023
January	52	36	<b>64</b>
February	50	27	<b>35</b>
March	31	39	<b>53</b>
April	33	49	<b>67</b>
May	46	39	<b>66</b>
June	35	50	<b>59</b>
July	44	45	<b>52</b>
August	55	41	<b>37</b>
September	46	51	<b>39</b>
October	45	62	
November	45	60	
December	67	59	



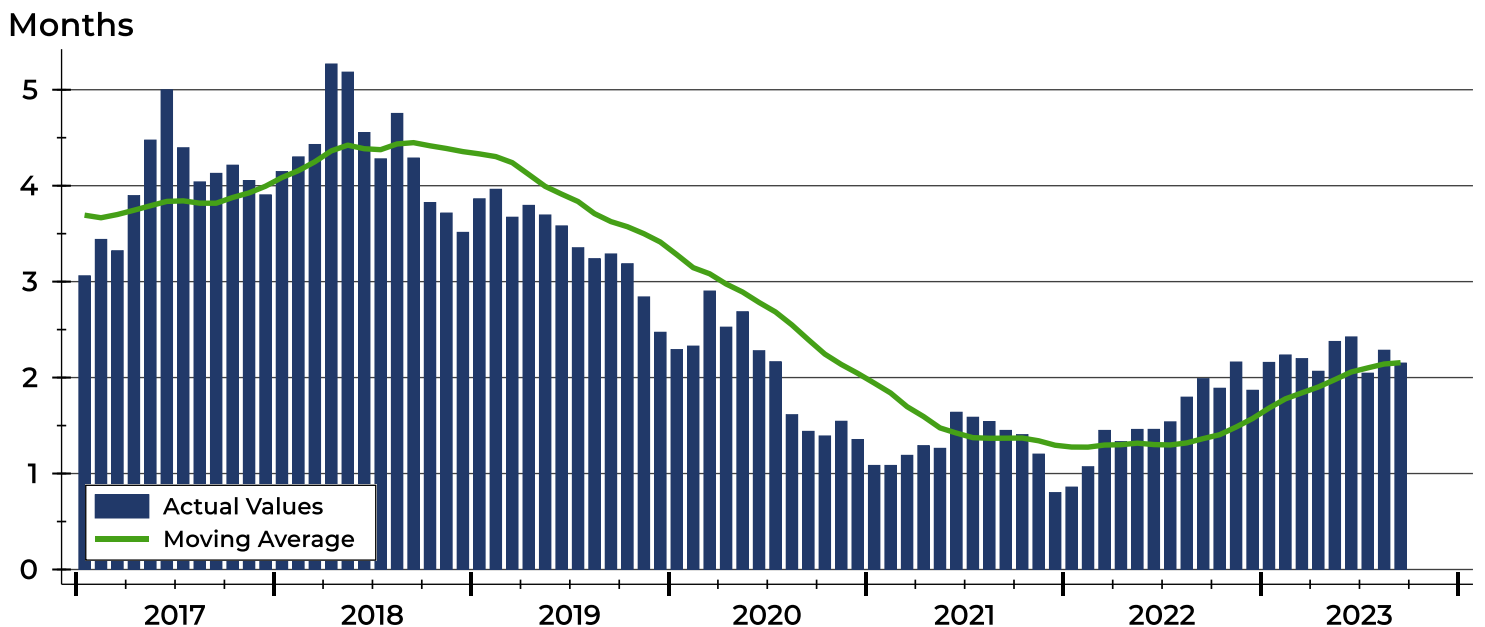
## Pottawatomie County Months' Supply Analysis

### Months' Supply by Month



Month	2021	2022	2023
January	1.1	0.9	<b>2.2</b>
February	1.1	1.1	<b>2.2</b>
March	1.2	1.4	<b>2.2</b>
April	1.3	1.3	<b>2.1</b>
May	1.3	1.5	<b>2.4</b>
June	1.6	1.5	<b>2.4</b>
July	1.6	1.5	<b>2.0</b>
August	1.5	1.8	<b>2.3</b>
September	1.4	2.0	<b>2.2</b>
October	1.4	1.9	
November	1.2	2.2	
December	0.8	1.9	

### History of Month's Supply





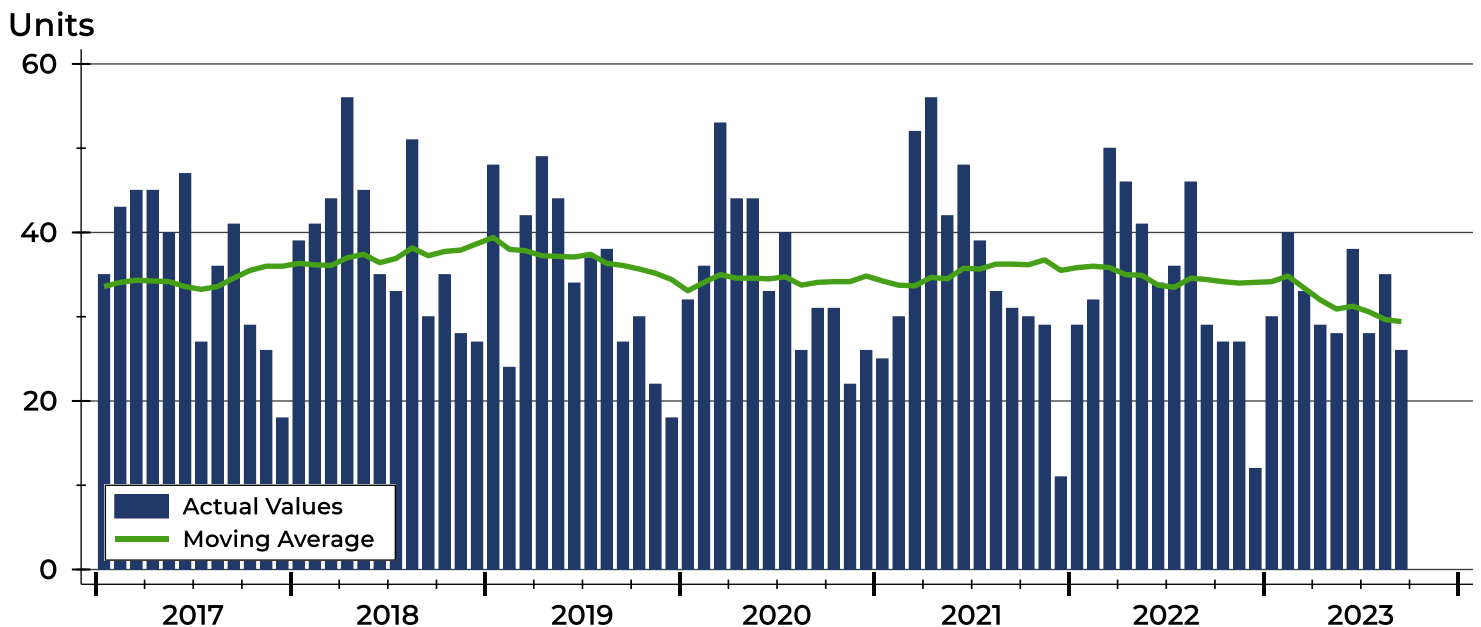
## Pottawatomie County New Listings Analysis

Summary Statistics for New Listings		2023	September 2022	Change
Current Month	New Listings	<b>26</b>	29	-10.3%
	Volume (1,000s)	<b>9,075</b>	10,835	-16.2%
	Average List Price	<b>349,019</b>	373,607	-6.6%
	Median List Price	<b>337,500</b>	350,000	-3.6%
Year-to-Date	New Listings	<b>287</b>	343	-16.3%
	Volume (1,000s)	<b>100,958</b>	116,223	-13.1%
	Average List Price	<b>351,770</b>	338,843	3.8%
	Median List Price	<b>335,000</b>	330,000	1.5%

A total of 26 new listings were added in Pottawatomie County during September, down 10.3% from the same month in 2022. Year-to-date Pottawatomie County has seen 287 new listings.

The median list price of these homes was \$337,500 down from \$350,000 in 2022.

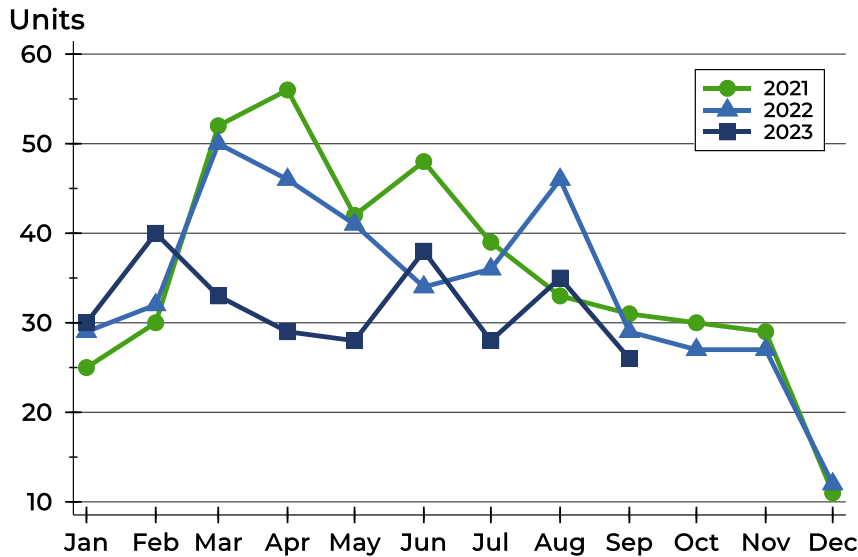
## History of New Listings





## Pottawatomie County New Listings Analysis

### New Listings by Month



Month	2021	2022	2023
January	25	29	<b>30</b>
February	30	32	<b>40</b>
March	52	50	<b>33</b>
April	56	46	<b>29</b>
May	42	41	<b>28</b>
June	48	34	<b>38</b>
July	39	36	<b>28</b>
August	33	46	<b>35</b>
September	31	29	<b>26</b>
October	30	27	
November	29	27	
December	11	12	

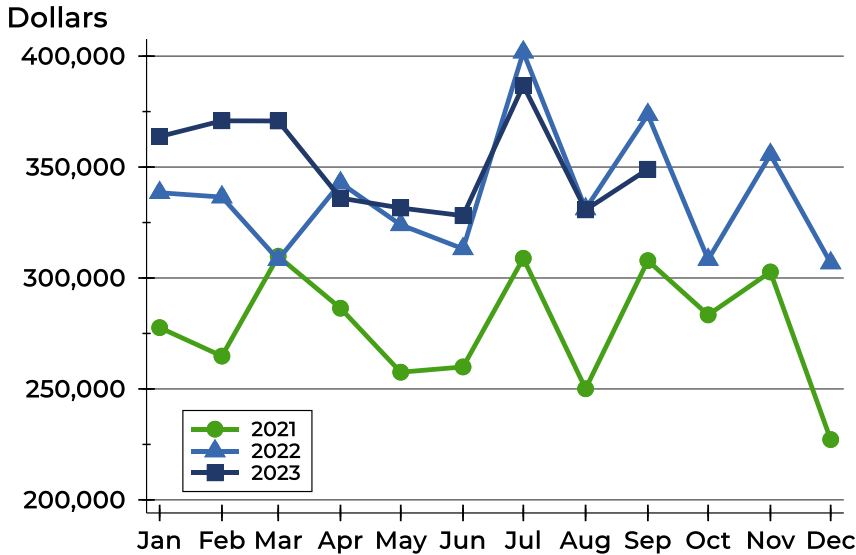
### New Listings by Price Range

Price Range	New Listings		List Price		Days on Market		Price as % of Orig.	
	Number	Percent	Average	Median	Avg.	Med.	Avg.	Med.
Below \$25,000	0	0.0%	N/A	N/A	N/A	N/A	N/A	N/A
\$25,000-\$49,999	0	0.0%	N/A	N/A	N/A	N/A	N/A	N/A
\$50,000-\$99,999	0	0.0%	N/A	N/A	N/A	N/A	N/A	N/A
\$100,000-\$124,999	0	0.0%	N/A	N/A	N/A	N/A	N/A	N/A
\$125,000-\$149,999	2	7.7%	137,000	137,000	8	8	100.0%	100.0%
\$150,000-\$174,999	1	3.8%	170,000	170,000	15	15	100.0%	100.0%
\$175,000-\$199,999	0	0.0%	N/A	N/A	N/A	N/A	N/A	N/A
\$200,000-\$249,999	4	15.4%	212,000	200,000	18	17	100.0%	100.0%
\$250,000-\$299,999	3	11.5%	294,633	295,000	9	6	100.0%	100.0%
\$300,000-\$399,999	9	34.6%	351,644	359,900	9	4	100.0%	100.0%
\$400,000-\$499,999	3	11.5%	422,967	419,900	14	16	100.0%	100.0%
\$500,000-\$749,999	4	15.4%	616,225	617,500	28	32	99.8%	100.0%
\$750,000-\$999,999	0	0.0%	N/A	N/A	N/A	N/A	N/A	N/A
\$1,000,000 and up	0	0.0%	N/A	N/A	N/A	N/A	N/A	N/A



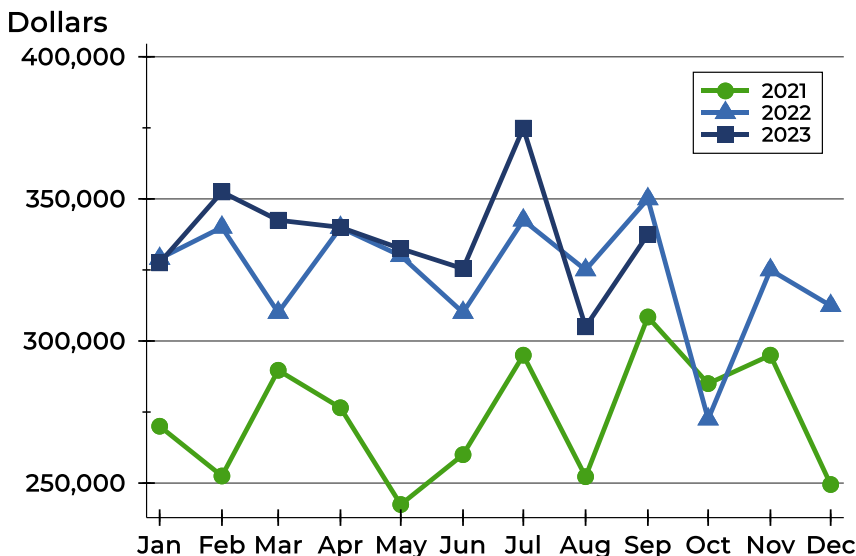
## Pottawatomie County New Listings Analysis

### Average Price



Month	2021	2022	2023
January	277,640	338,438	<b>363,783</b>
February	264,803	336,485	<b>370,851</b>
March	309,779	308,271	<b>370,785</b>
April	286,386	342,847	<b>336,028</b>
May	257,544	323,966	<b>331,554</b>
June	259,931	313,151	<b>328,076</b>
July	308,895	401,797	<b>386,786</b>
August	250,072	331,116	<b>330,714</b>
September	307,825	373,607	<b>349,019</b>
October	283,383	308,297	
November	302,724	355,596	
December	227,186	306,771	

### Median Price



Month	2021	2022	2023
January	270,000	329,000	<b>327,500</b>
February	252,500	340,000	<b>352,450</b>
March	289,700	310,000	<b>342,500</b>
April	276,500	339,900	<b>340,000</b>
May	242,450	330,000	<b>332,500</b>
June	260,000	310,000	<b>325,450</b>
July	295,000	342,500	<b>374,900</b>
August	252,250	325,000	<b>305,000</b>
September	308,450	350,000	<b>337,500</b>
October	285,000	272,500	
November	295,000	325,000	
December	249,500	312,425	



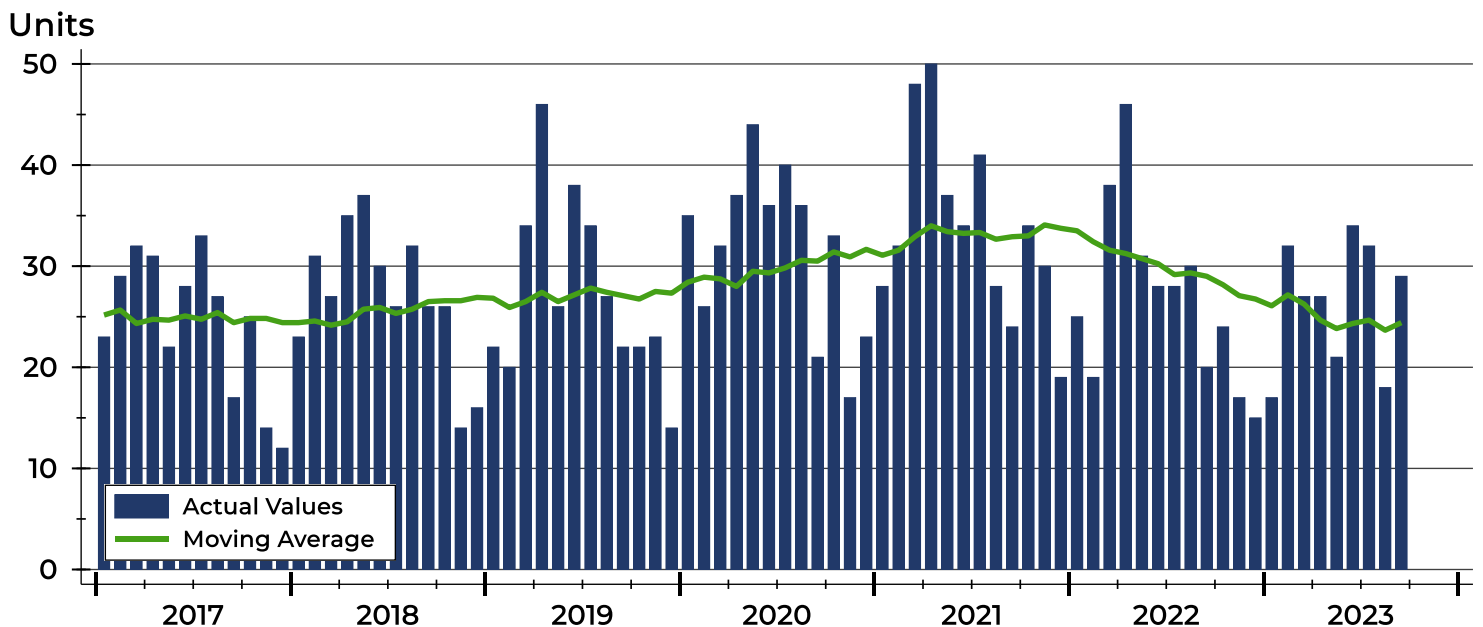
## Pottawatomie County Contracts Written Analysis

Summary Statistics for Contracts Written		September			Year-to-Date		
		2023	2022	Change	2023	2022	Change
Contracts Written		<b>29</b>	20	45.0%	<b>237</b>	265	-10.6%
Volume (1,000s)		<b>9,216</b>	6,304	46.2%	<b>76,165</b>	83,336	-8.6%
Average	Sale Price	<b>317,782</b>	315,205	0.8%	<b>321,373</b>	314,476	2.2%
	Days on Market	<b>40</b>	32	25.0%	<b>45</b>	24	87.5%
	Percent of Original	<b>98.1%</b>	97.4%	0.7%	<b>97.7%</b>	99.8%	-2.1%
Median	Sale Price	<b>310,000</b>	300,000	3.3%	<b>330,000</b>	315,000	4.8%
	Days on Market	<b>21</b>	20	5.0%	<b>16</b>	7	128.6%
	Percent of Original	<b>100.0%</b>	99.4%	0.6%	<b>100.0%</b>	100.0%	0.0%

A total of 29 contracts for sale were written in Pottawatomie County during the month of September, up from 20 in 2022. The median list price of these homes was \$310,000, up from \$300,000 the prior year.

Half of the homes that went under contract in September were on the market less than 21 days, compared to 20 days in September 2022.

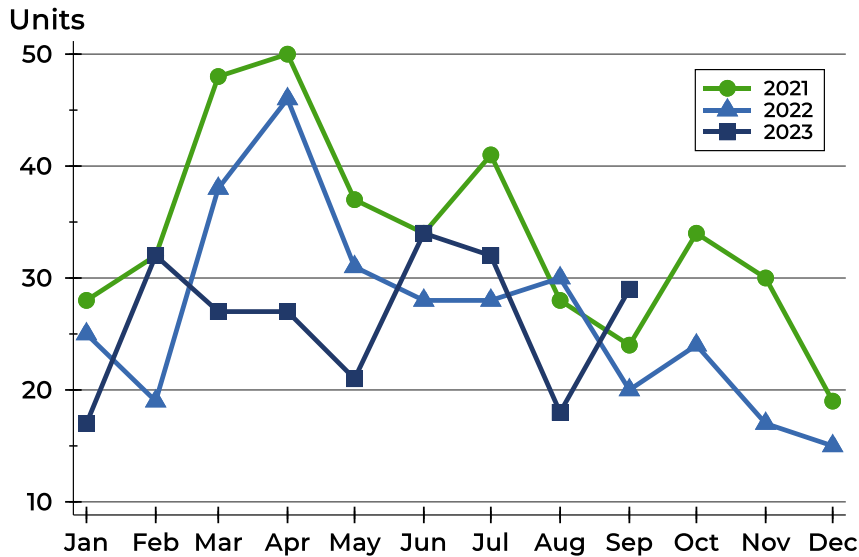
## History of Contracts Written





## Pottawatomie County Contracts Written Analysis

### Contracts Written by Month



Month	2021	2022	2023
January	28	25	17
February	32	19	32
March	48	38	27
April	50	46	27
May	37	31	21
June	34	28	34
July	41	28	32
August	28	30	18
September	24	20	29
October	34	24	
November	30	17	
December	19	15	

### Contracts Written by Price Range

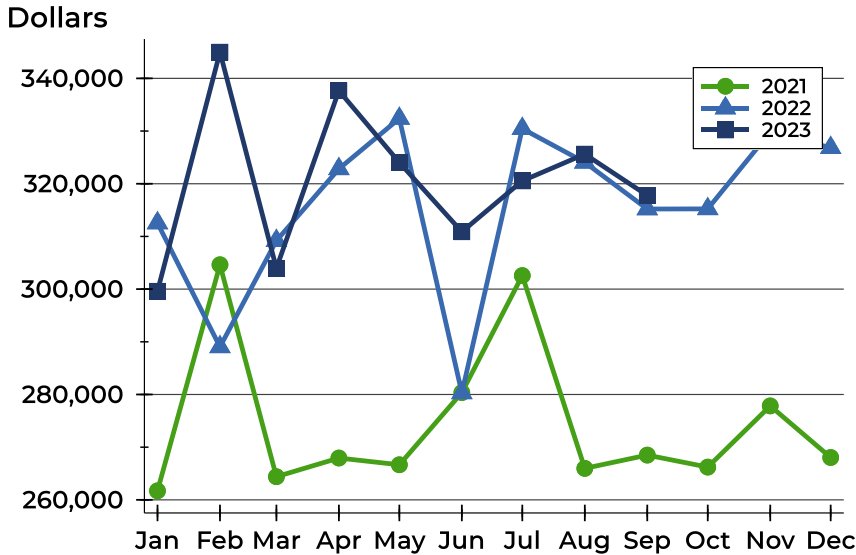
Price Range	Contracts Written		List Price		Days on Market		Price as % of Orig.	
	Number	Percent	Average	Median	Avg.	Med.	Avg.	Med.
Below \$25,000	0	0.0%	N/A	N/A	N/A	N/A	N/A	N/A
\$25,000-\$49,999	0	0.0%	N/A	N/A	N/A	N/A	N/A	N/A
\$50,000-\$99,999	1	3.4%	89,500	89,500	106	106	100.0%	100.0%
\$100,000-\$124,999	2	6.9%	110,000	110,000	93	93	90.4%	90.4%
\$125,000-\$149,999	2	6.9%	137,000	137,000	8	8	100.0%	100.0%
\$150,000-\$174,999	0	0.0%	N/A	N/A	N/A	N/A	N/A	N/A
\$175,000-\$199,999	0	0.0%	N/A	N/A	N/A	N/A	N/A	N/A
\$200,000-\$249,999	3	10.3%	215,000	200,000	22	26	100.0%	100.0%
\$250,000-\$299,999	6	20.7%	273,983	277,500	32	22	97.5%	100.0%
\$300,000-\$399,999	9	31.0%	354,878	359,900	29	4	99.3%	100.0%
\$400,000-\$499,999	4	13.8%	449,975	447,450	63	24	100.0%	100.0%
\$500,000-\$749,999	2	6.9%	674,738	674,738	46	46	93.4%	93.4%
\$750,000-\$999,999	0	0.0%	N/A	N/A	N/A	N/A	N/A	N/A
\$1,000,000 and up	0	0.0%	N/A	N/A	N/A	N/A	N/A	N/A





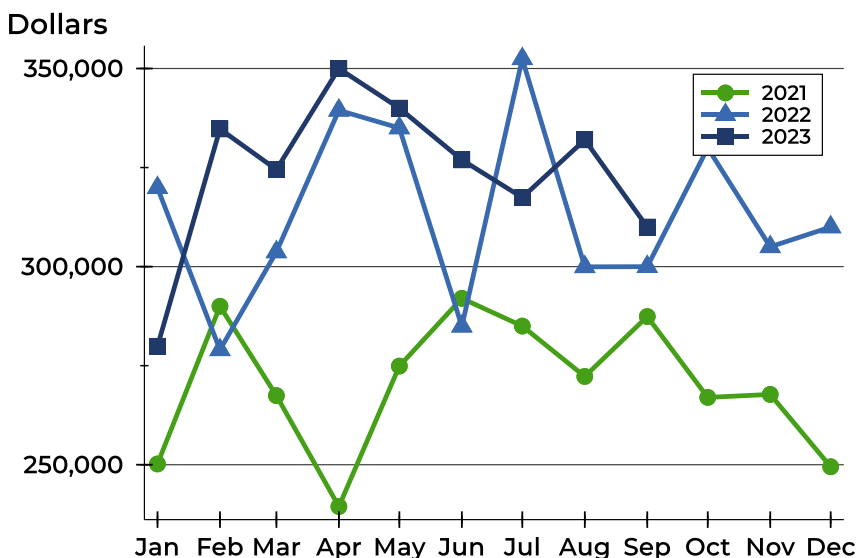
## Pottawatomie County Contracts Written Analysis

### Average Price



Month	2021	2022	2023
January	261,718	312,546	<b>299,594</b>
February	304,628	289,037	<b>344,978</b>
March	264,400	309,196	<b>303,959</b>
April	267,945	322,826	<b>337,663</b>
May	266,667	332,385	<b>324,033</b>
June	280,366	280,298	<b>310,883</b>
July	302,572	330,457	<b>320,544</b>
August	265,977	324,068	<b>325,628</b>
September	268,499	315,205	<b>317,782</b>
October	266,221	315,234	
November	277,837	329,815	
December	268,045	326,840	

### Median Price

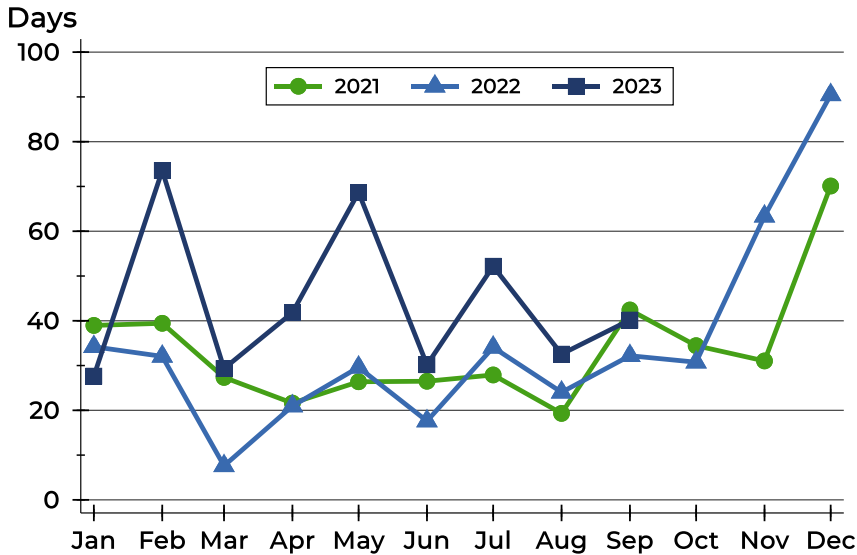


Month	2021	2022	2023
January	250,200	319,900	<b>279,900</b>
February	290,000	279,000	<b>334,750</b>
March	267,450	303,700	<b>324,500</b>
April	239,450	339,450	<b>350,000</b>
May	274,900	335,000	<b>340,000</b>
June	292,000	284,950	<b>326,950</b>
July	285,000	352,450	<b>317,450</b>
August	272,280	299,950	<b>332,000</b>
September	287,400	300,000	<b>310,000</b>
October	267,000	329,950	
November	267,750	305,000	
December	249,500	310,000	



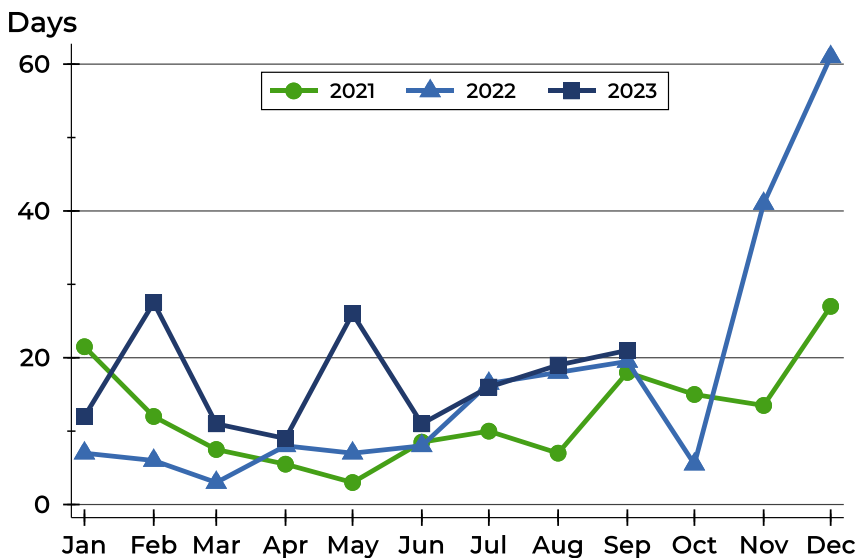
## Pottawatomie County Contracts Written Analysis

### Average DOM



Month	2021	2022	2023
January	39	34	<b>28</b>
February	39	32	<b>74</b>
March	27	8	<b>29</b>
April	22	21	<b>42</b>
May	26	30	<b>69</b>
June	27	18	<b>30</b>
July	28	34	<b>52</b>
August	19	24	<b>33</b>
September	42	32	<b>40</b>
October	34	31	
November	31	63	
December	70	90	

### Median DOM



Month	2021	2022	2023
January	22	7	<b>12</b>
February	12	6	<b>28</b>
March	8	3	<b>11</b>
April	6	8	<b>9</b>
May	3	7	<b>26</b>
June	9	8	<b>11</b>
July	10	17	<b>16</b>
August	7	18	<b>19</b>
September	18	20	<b>21</b>
October	15	6	
November	14	41	
December	27	61	



## Pottawatomie County Pending Contracts Analysis

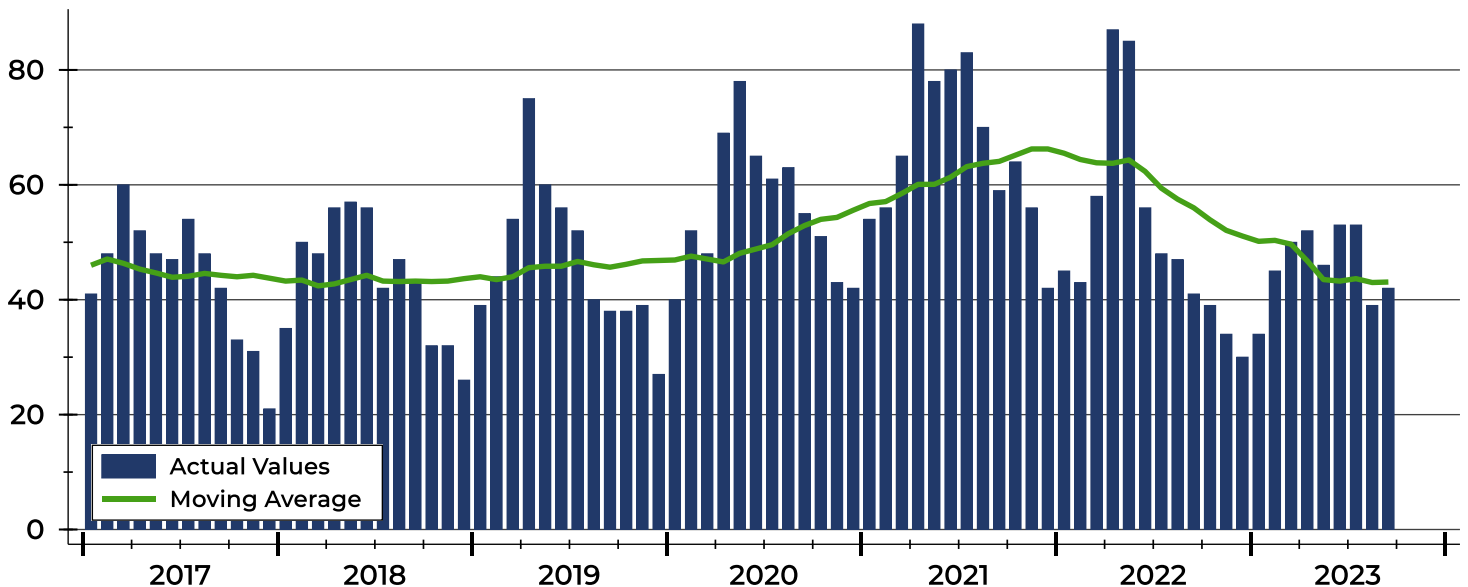
Summary Statistics for Pending Contracts		End of September		
		2023	2022	Change
Pending Contracts		<b>42</b>	41	2.4%
Volume (1,000s)		<b>13,413</b>	13,585	-1.3%
Average	List Price	<b>319,350</b>	331,346	-3.6%
	Days on Market	<b>37</b>	30	23.3%
	Percent of Original	<b>99.5%</b>	99.9%	-0.4%
Median	List Price	<b>304,950</b>	305,000	0.0%
	Days on Market	<b>21</b>	18	16.7%
	Percent of Original	<b>100.0%</b>	100.0%	0.0%

A total of 42 listings in Pottawatomie County had contracts pending at the end of September, up from 41 contracts pending at the end of September 2022.

Pending contracts reflect listings with a contract in place at the end of the month. In contrast, contracts written measures the number of listings put under contract during the month.

## History of Pending Contracts

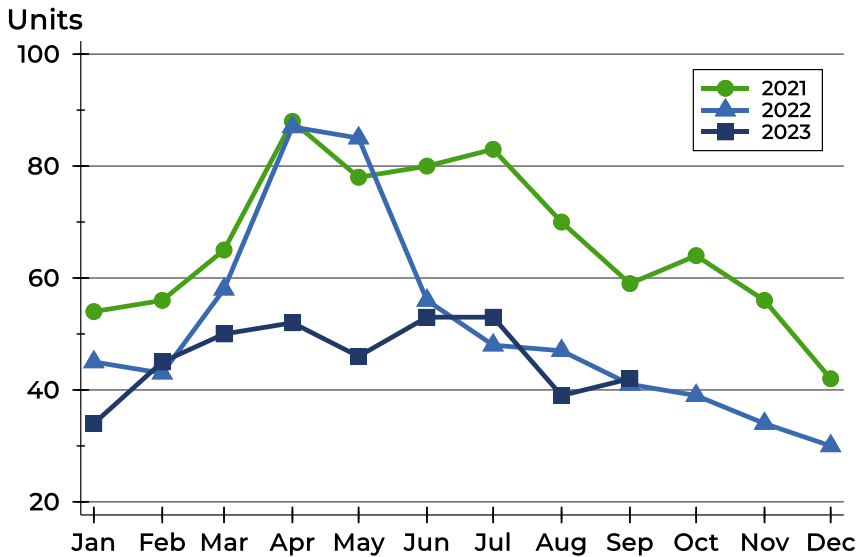
Units





## Pottawatomie County Pending Contracts Analysis

### Pending Contracts by Month



Month	2021	2022	2023
January	54	45	<b>34</b>
February	56	43	<b>45</b>
March	65	58	<b>50</b>
April	88	87	<b>52</b>
May	78	85	<b>46</b>
June	80	56	<b>53</b>
July	83	48	<b>53</b>
August	70	47	<b>39</b>
September	59	41	<b>42</b>
October	64	39	
November	56	34	
December	42	30	

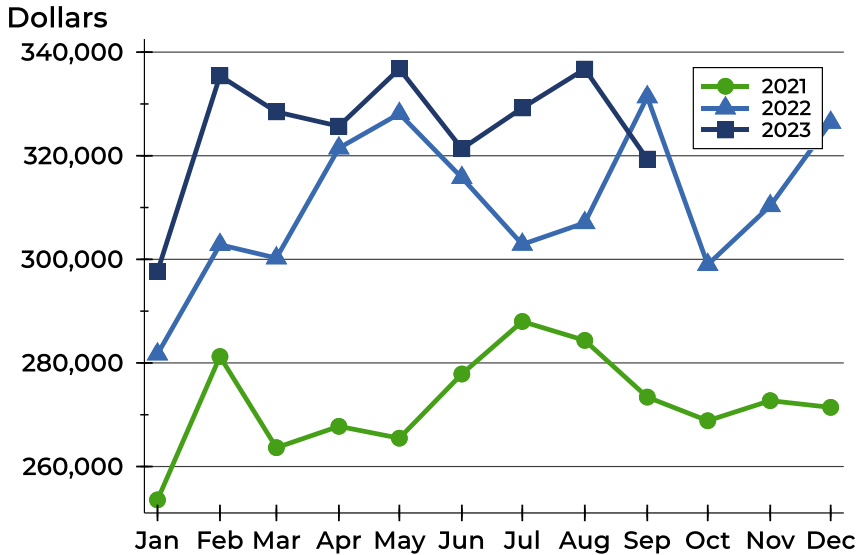
### Pending Contracts by Price Range

Price Range	Pending Contracts		List Price		Days on Market		Price as % of Orig.	
	Number	Percent	Average	Median	Avg.	Med.	Avg.	Med.
Below \$25,000	0	0.0%	N/A	N/A	N/A	N/A	N/A	N/A
\$25,000-\$49,999	0	0.0%	N/A	N/A	N/A	N/A	N/A	N/A
\$50,000-\$99,999	1	2.4%	89,500	89,500	106	106	100.0%	100.0%
\$100,000-\$124,999	2	4.8%	110,000	110,000	93	93	90.4%	90.4%
\$125,000-\$149,999	2	4.8%	137,000	137,000	8	8	100.0%	100.0%
\$150,000-\$174,999	0	0.0%	N/A	N/A	N/A	N/A	N/A	N/A
\$175,000-\$199,999	1	2.4%	190,000	190,000	6	6	100.0%	100.0%
\$200,000-\$249,999	7	16.7%	232,471	239,900	48	35	100.0%	100.0%
\$250,000-\$299,999	8	19.0%	274,238	277,500	33	25	101.0%	100.0%
\$300,000-\$399,999	13	31.0%	357,892	365,000	27	19	99.2%	100.0%
\$400,000-\$499,999	4	9.5%	462,225	467,000	62	24	100.0%	100.0%
\$500,000-\$749,999	4	9.5%	579,125	577,000	12	13	100.0%	100.0%
\$750,000-\$999,999	0	0.0%	N/A	N/A	N/A	N/A	N/A	N/A
\$1,000,000 and up	0	0.0%	N/A	N/A	N/A	N/A	N/A	N/A



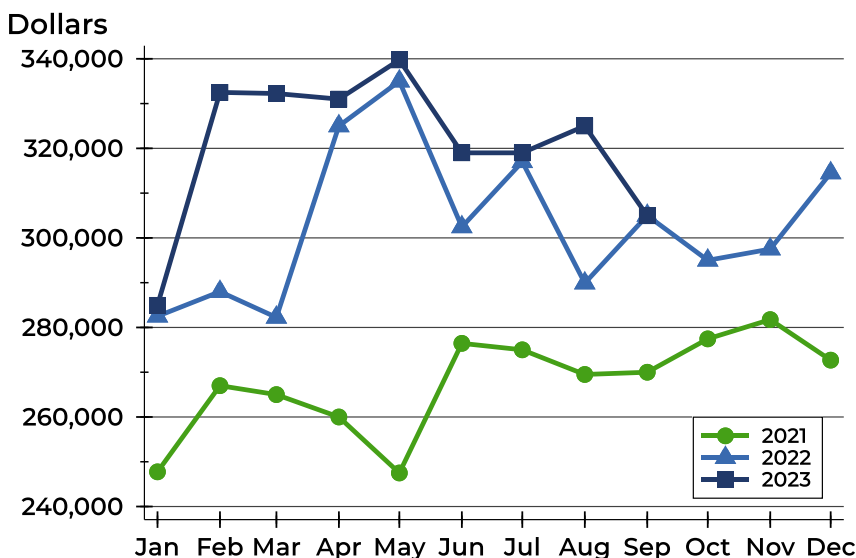
## Pottawatomie County Pending Contracts Analysis

### Average Price



Month	2021	2022	2023
January	253,565	281,700	<b>297,634</b>
February	281,241	302,832	<b>335,418</b>
March	263,641	300,248	<b>328,472</b>
April	267,766	321,471	<b>325,708</b>
May	265,473	328,125	<b>336,778</b>
June	277,862	315,771	<b>321,353</b>
July	288,006	302,886	<b>329,236</b>
August	284,350	307,048	<b>336,728</b>
September	273,403	331,346	<b>319,350</b>
October	268,839	298,977	
November	272,718	310,334	
December	271,423	326,423	

### Median Price

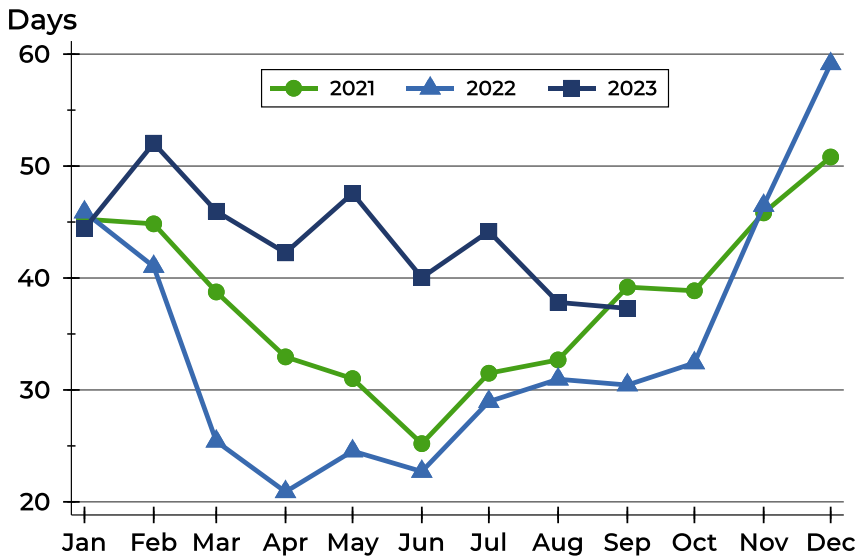


Month	2021	2022	2023
January	247,750	282,500	<b>284,950</b>
February	267,000	288,000	<b>332,500</b>
March	265,000	282,250	<b>332,250</b>
April	260,000	325,000	<b>331,000</b>
May	247,500	335,000	<b>339,750</b>
June	276,450	302,450	<b>319,000</b>
July	275,000	317,000	<b>319,000</b>
August	269,500	289,900	<b>325,000</b>
September	270,000	305,000	<b>304,950</b>
October	277,450	295,000	
November	281,750	297,500	
December	272,700	314,500	



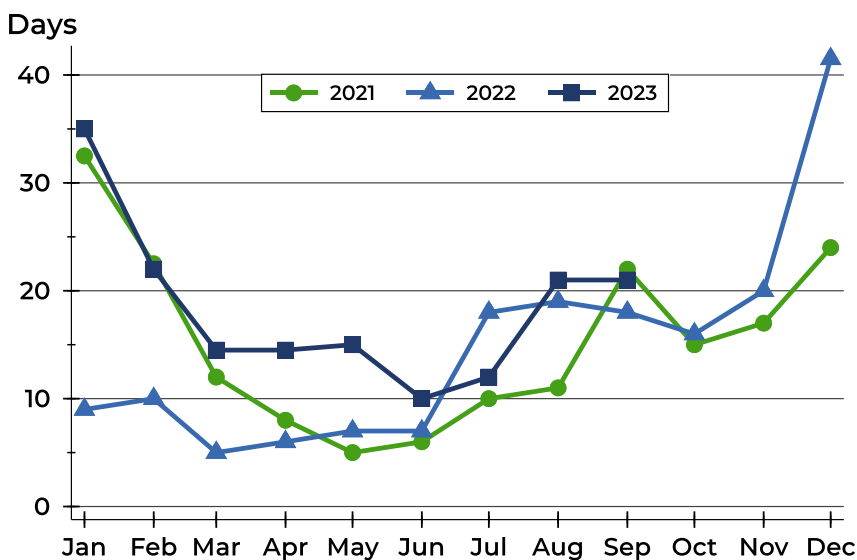
## Pottawatomie County Pending Contracts Analysis

### Average DOM



Month	2021	2022	2023
January	45	46	<b>44</b>
February	45	41	<b>52</b>
March	39	25	<b>46</b>
April	33	21	<b>42</b>
May	31	25	<b>48</b>
June	25	23	<b>40</b>
July	31	29	<b>44</b>
August	33	31	<b>38</b>
September	39	30	<b>37</b>
October	39	32	
November	46	46	
December	51	59	

### Median DOM



Month	2021	2022	2023
January	33	9	<b>35</b>
February	23	10	<b>22</b>
March	12	5	<b>15</b>
April	8	6	<b>15</b>
May	5	7	<b>15</b>
June	6	7	<b>10</b>
July	10	18	<b>12</b>
August	11	19	<b>21</b>
September	22	18	<b>21</b>
October	15	16	
November	17	20	
December	24	42	