



**February
2024**

Flint Hills MLS Statistics



**FLINT HILLS
ASSOCIATION
OF REALTORS®**

Pottawatomie County Housing Report



Market Overview

Pottawatomie County Home Sales Fell in February

Total home sales in Pottawatomie County fell last month to 14 units, compared to 19 units in February 2023. Total sales volume was \$3.5 million, down from a year earlier.

The median sale price in February was \$245,000, down from \$274,400 a year earlier. Homes that sold in February were typically on the market for 32 days and sold for 99.1% of their list prices.

Pottawatomie County Active Listings Down at End of February

The total number of active listings in Pottawatomie County at the end of February was 43 units, down from 60 at the same point in 2023. This represents a 1.8 months' supply of homes available for sale. The median list price of homes on the market at the end of February was \$334,000.

During February, a total of 20 contracts were written down from 34 in February 2023. At the end of the month, there were 37 contracts still pending.

Report Contents

- Summary Statistics – Page 2
- Closed Listing Analysis – Page 3
- Active Listings Analysis – Page 7
- Months' Supply Analysis – Page 11
- New Listings Analysis – Page 12
- Contracts Written Analysis – Page 15
- Pending Contracts Analysis – Page 19

Contact Information

Margaret Pendleton, Association Executive
 Flint Hills Association of REALTORS®
 205 S. Seth Child Road
 Manhattan, KS 66502
 785-776-1203
ae@flinthillsrealtors.net
www.flinthillsrealtors.net



Pottawatomie County Summary Statistics

February MLS Statistics Three-year History		Current Month			Year-to-Date		
		2024	2023	2022	2024	2023	2022
Home Sales		14	19	25	28	34	46
Change from prior year		-26.3%	-24.0%	-7.4%	-17.6%	-26.1%	-2.1%
Active Listings		43	60	36	N/A	N/A	N/A
Change from prior year		-28.3%	66.7%	5.9%			
Months' Supply		1.8	2.2	1.1	N/A	N/A	N/A
Change from prior year		-18.2%	100.0%	0.0%			
New Listings		21	40	32	47	70	61
Change from prior year		-47.5%	25.0%	6.7%	-32.9%	14.8%	10.9%
Contracts Written		20	34	19	37	51	44
Change from prior year		-41.2%	78.9%	-40.6%	-27.5%	15.9%	-26.7%
Pending Contracts		37	45	43	N/A	N/A	N/A
Change from prior year		-17.8%	4.7%	-23.2%			
Sales Volume (1,000s)		3,524	5,446	7,636	7,308	10,660	13,616
Change from prior year		-35.3%	-28.7%	6.9%	-31.4%	-21.7%	9.2%
Average	Sale Price	251,689	286,647	305,443	260,985	313,515	295,997
	Change from prior year	-12.2%	-6.2%	15.5%	-16.8%	5.9%	11.6%
	List Price of Actives	417,395	371,789	333,767	N/A	N/A	N/A
	Change from prior year	12.3%	11.4%	28.6%			
	Days on Market	54	52	30	53	57	34
Change from prior year	3.8%	73.3%	-26.8%	-7.0%	67.6%	-33.3%	
Percent of List	99.9%	98.5%	101.2%	99.3%	98.4%	100.4%	
Change from prior year	1.4%	-2.7%	3.6%	0.9%	-2.0%	2.7%	
Percent of Original	98.9%	96.3%	100.6%	97.3%	95.4%	99.3%	
Change from prior year	2.7%	-4.3%	3.9%	2.0%	-3.9%	3.0%	
Median	Sale Price	245,000	274,400	320,000	250,000	299,950	299,000
	Change from prior year	-10.7%	-14.3%	12.3%	-16.7%	0.3%	10.7%
	List Price of Actives	334,000	362,400	364,450	N/A	N/A	N/A
	Change from prior year	-7.8%	-0.6%	35.6%			
	Days on Market	32	46	9	32	46	15
Change from prior year	-30.4%	411.1%	-59.1%	-30.4%	206.7%	-31.8%	
Percent of List	99.1%	98.6%	100.0%	99.1%	99.1%	100.0%	
Change from prior year	0.5%	-1.4%	0.0%	0.0%	-0.9%	0.0%	
Percent of Original	98.9%	96.5%	100.0%	98.5%	96.9%	100.0%	
Change from prior year	2.5%	-3.5%	0.0%	1.7%	-3.1%	0.0%	

Note: Year-to-date statistics cannot be calculated for Active Listings, Months' Supply and Pending Contracts.



Pottawatomie County Closed Listings Analysis

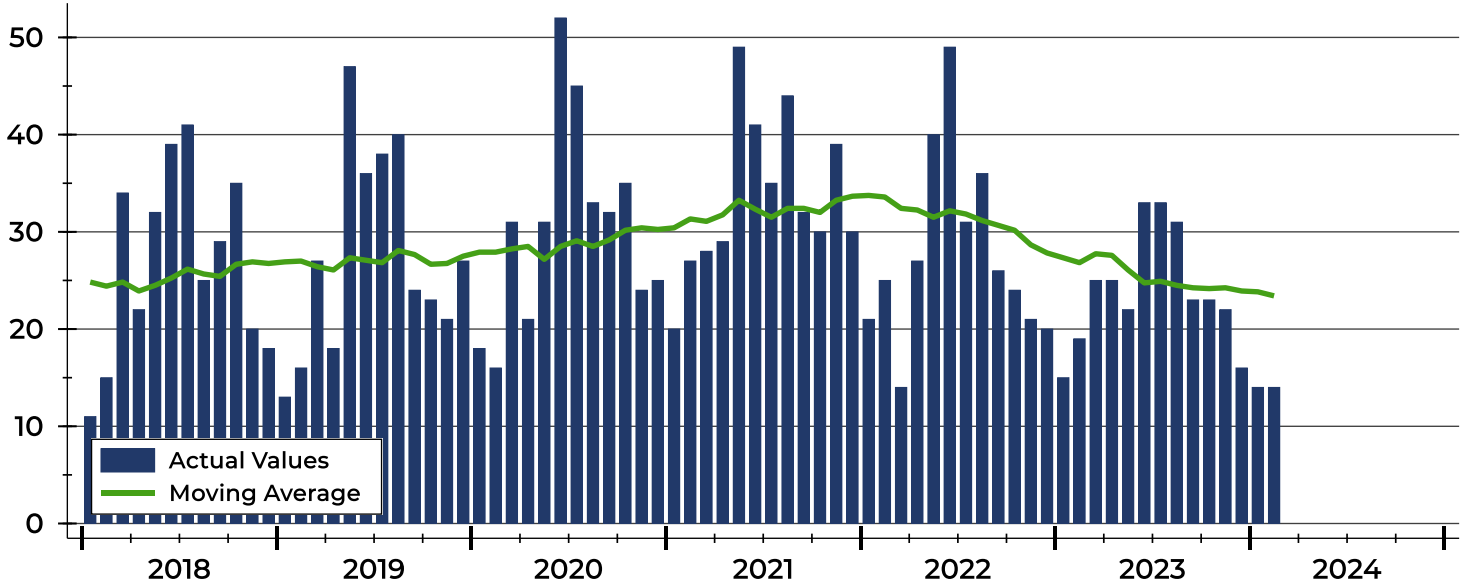
Summary Statistics for Closed Listings		2024	February 2023	Change	2024	Year-to-Date 2023	Change
Closed Listings		14	19	-26.3%	28	34	-17.6%
Volume (1,000s)		3,524	5,446	-35.3%	7,308	10,660	-31.4%
Months' Supply		1.8	2.2	-18.2%	N/A	N/A	N/A
Average	Sale Price	251,689	286,647	-12.2%	260,985	313,515	-16.8%
	Days on Market	54	52	3.8%	53	57	-7.0%
	Percent of List	99.9%	98.5%	1.4%	99.3%	98.4%	0.9%
	Percent of Original	98.9%	96.3%	2.7%	97.3%	95.4%	2.0%
Median	Sale Price	245,000	274,400	-10.7%	250,000	299,950	-16.7%
	Days on Market	32	46	-30.4%	32	46	-30.4%
	Percent of List	99.1%	98.6%	0.5%	99.1%	99.1%	0.0%
	Percent of Original	98.9%	96.5%	2.5%	98.5%	96.9%	1.7%

A total of 14 homes sold in Pottawatomie County in February, down from 19 units in February 2023. Total sales volume fell to \$3.5 million compared to \$5.4 million in the previous year.

The median sales price in February was \$245,000, down 10.7% compared to the prior year. Median days on market was 32 days, down from 37 days in January, and down from 46 in February 2023.

History of Closed Listings

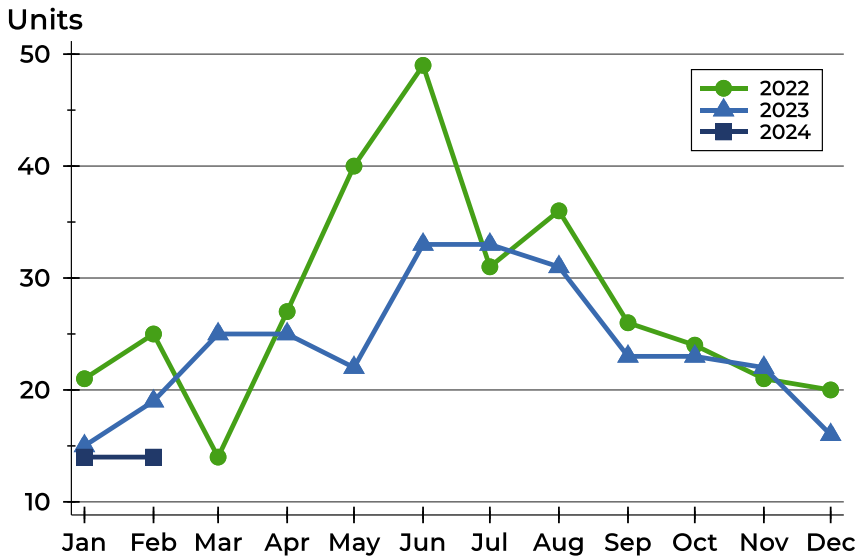
Units





Pottawatomie County Closed Listings Analysis

Closed Listings by Month



Month	2022	2023	2024
January	21	15	14
February	25	19	14
March	14	25	
April	27	25	
May	40	22	
June	49	33	
July	31	33	
August	36	31	
September	26	23	
October	24	23	
November	21	22	
December	20	16	

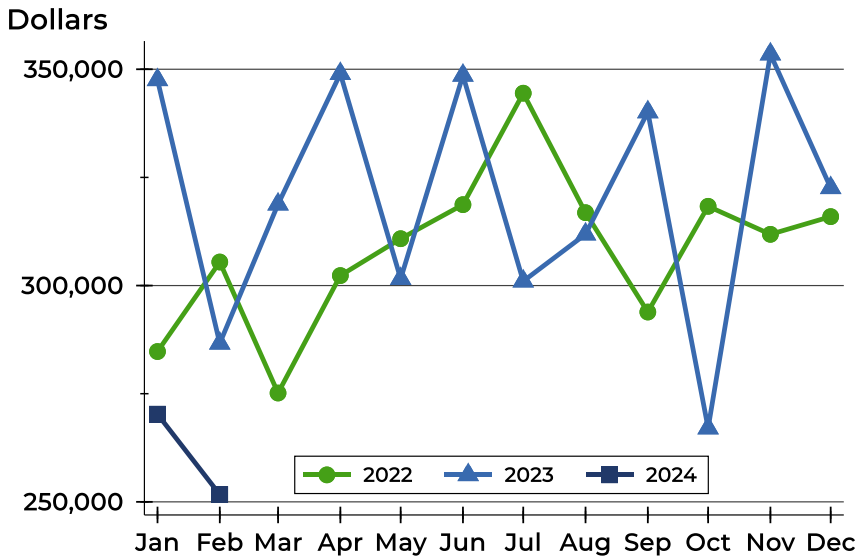
Closed Listings by Price Range

Price Range	Sales		Months' Supply	Sale Price		Days on Market		Price as % of List		Price as % of Orig.	
	Number	Percent		Average	Median	Avg.	Med.	Avg.	Med.	Avg.	Med.
Below \$25,000	0	0.0%	N/A	N/A	N/A	N/A	N/A	N/A	N/A	N/A	N/A
\$25,000-\$49,999	0	0.0%	N/A	N/A	N/A	N/A	N/A	N/A	N/A	N/A	N/A
\$50,000-\$99,999	0	0.0%	N/A	N/A	N/A	N/A	N/A	N/A	N/A	N/A	N/A
\$100,000-\$124,999	0	0.0%	N/A	N/A	N/A	N/A	N/A	N/A	N/A	N/A	N/A
\$125,000-\$149,999	2	14.3%	3.6	137,000	137,000	13	13	106.3%	106.3%	106.3%	106.3%
\$150,000-\$174,999	2	14.3%	2.2	159,500	159,500	60	60	99.1%	99.1%	96.2%	96.2%
\$175,000-\$199,999	2	14.3%	0.9	185,325	185,325	81	81	98.9%	98.9%	98.9%	98.9%
\$200,000-\$249,999	1	7.1%	3.1	225,000	225,000	22	22	100.0%	100.0%	100.0%	100.0%
\$250,000-\$299,999	2	14.3%	1.1	275,000	275,000	119	119	97.5%	97.5%	96.6%	96.6%
\$300,000-\$399,999	4	28.6%	1.3	341,250	328,000	43	47	99.4%	98.9%	97.9%	98.9%
\$400,000-\$499,999	1	7.1%	2.8	420,000	420,000	23	23	97.7%	97.7%	97.7%	97.7%
\$500,000-\$749,999	0	0.0%	N/A	N/A	N/A	N/A	N/A	N/A	N/A	N/A	N/A
\$750,000-\$999,999	0	0.0%	N/A	N/A	N/A	N/A	N/A	N/A	N/A	N/A	N/A
\$1,000,000 and up	0	0.0%	N/A	N/A	N/A	N/A	N/A	N/A	N/A	N/A	N/A



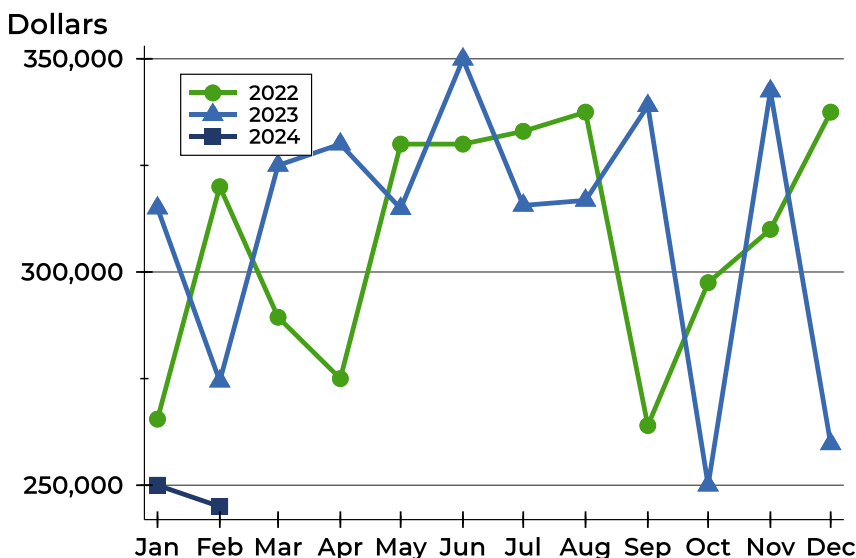
Pottawatomie County Closed Listings Analysis

Average Price



Month	2022	2023	2024
January	284,752	347,548	270,281
February	305,443	286,647	251,689
March	275,167	318,804	
April	302,308	348,976	
May	310,831	301,576	
June	318,706	348,576	
July	344,468	301,005	
August	316,847	311,874	
September	293,881	340,115	
October	318,325	267,050	
November	311,843	353,491	
December	315,935	322,588	

Median Price

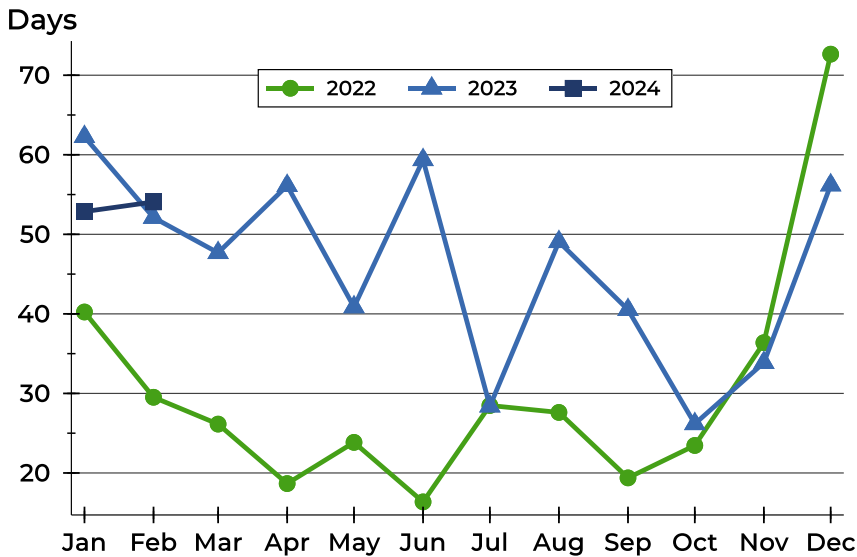


Month	2022	2023	2024
January	265,500	315,000	250,000
February	320,000	274,400	245,000
March	289,400	325,000	
April	275,000	330,000	
May	330,000	314,875	
June	330,000	349,900	
July	333,000	315,626	
August	337,500	316,806	
September	264,000	339,000	
October	297,500	250,000	
November	310,000	342,450	
December	337,500	259,703	



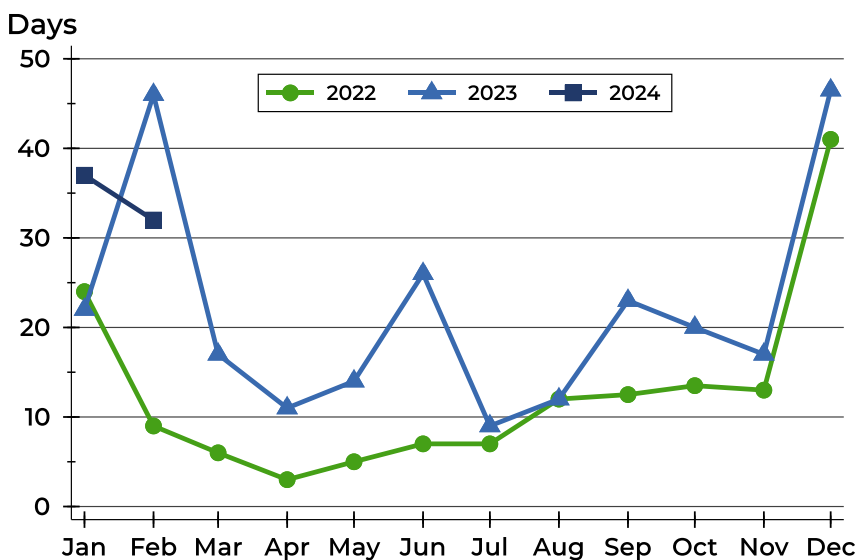
Pottawatomie County Closed Listings Analysis

Average DOM



Month	2022	2023	2024
January	40	62	53
February	30	52	54
March	26	48	
April	19	56	
May	24	41	
June	16	59	
July	28	28	
August	28	49	
September	19	41	
October	23	26	
November	36	34	
December	73	56	

Median DOM



Month	2022	2023	2024
January	24	22	37
February	9	46	32
March	6	17	
April	3	11	
May	5	14	
June	7	26	
July	7	9	
August	12	12	
September	13	23	
October	14	20	
November	13	17	
December	41	47	



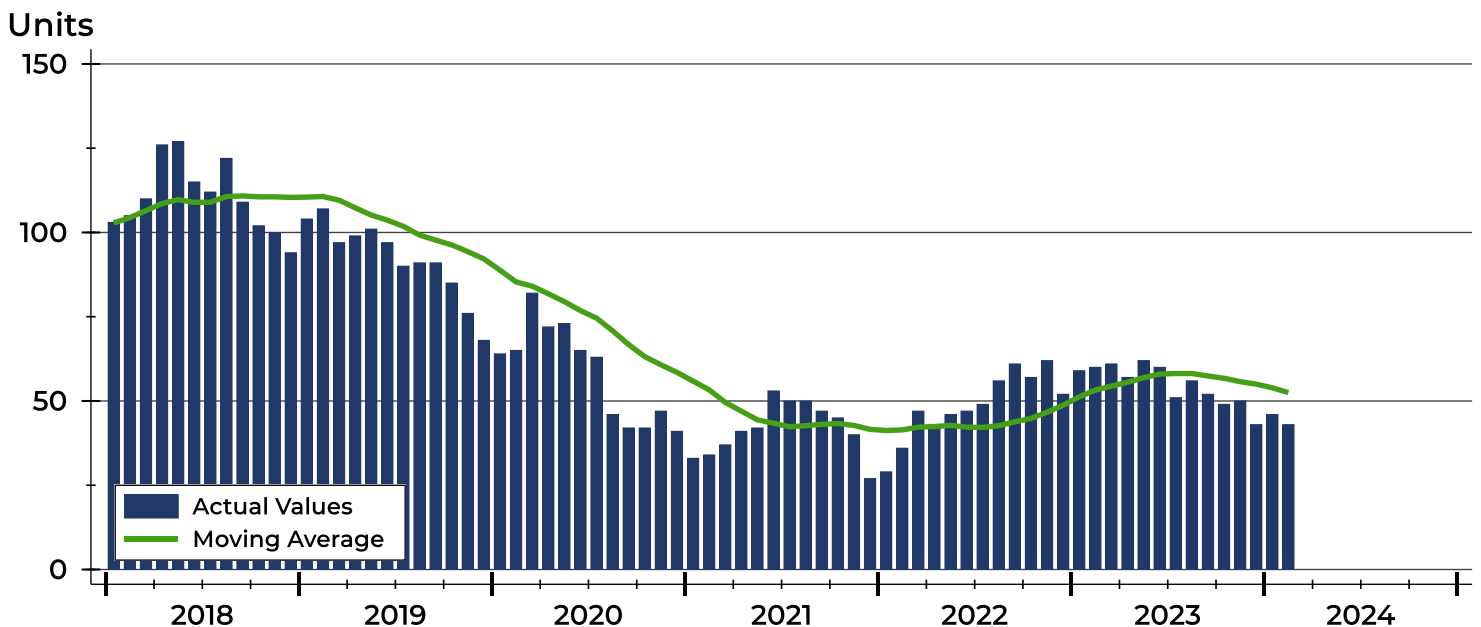
Pottawatomie County Active Listings Analysis

Summary Statistics for Active Listings		2024	End of February 2023	Change
Active Listings		43	60	-28.3%
Volume (1,000s)		17,948	22,307	-19.5%
Months' Supply		1.8	2.2	-18.2%
Average	List Price	417,395	371,789	12.3%
	Days on Market	66	63	4.8%
	Percent of Original	98.5%	98.7%	-0.2%
Median	List Price	334,000	362,400	-7.8%
	Days on Market	43	35	22.9%
	Percent of Original	100.0%	100.0%	0.0%

A total of 43 homes were available for sale in Pottawatomie County at the end of February. This represents a 1.8 months' supply of active listings.

The median list price of homes on the market at the end of February was \$334,000, down 7.8% from 2023. The typical time on market for active listings was 43 days, up from 35 days a year earlier.

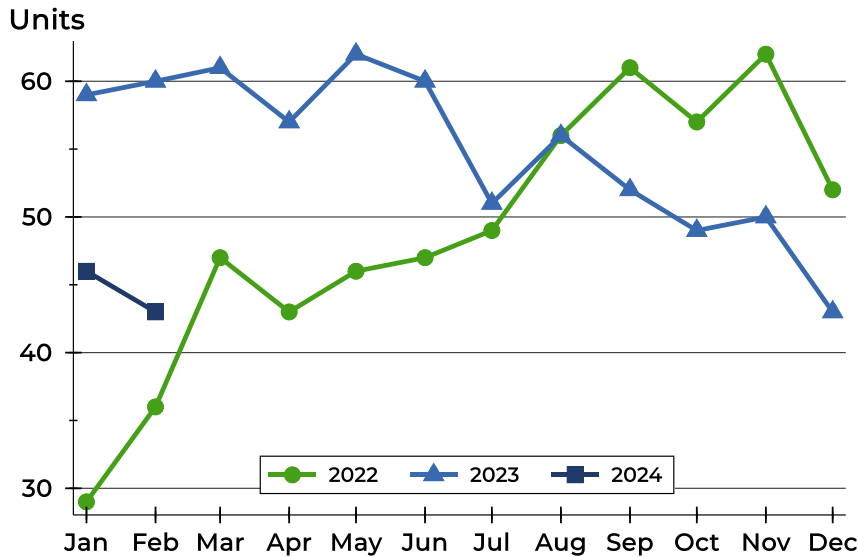
History of Active Listings





Pottawatomie County Active Listings Analysis

Active Listings by Month



Month	2022	2023	2024
January	29	59	46
February	36	60	43
March	47	61	
April	43	57	
May	46	62	
June	47	60	
July	49	51	
August	56	56	
September	61	52	
October	57	49	
November	62	50	
December	52	43	

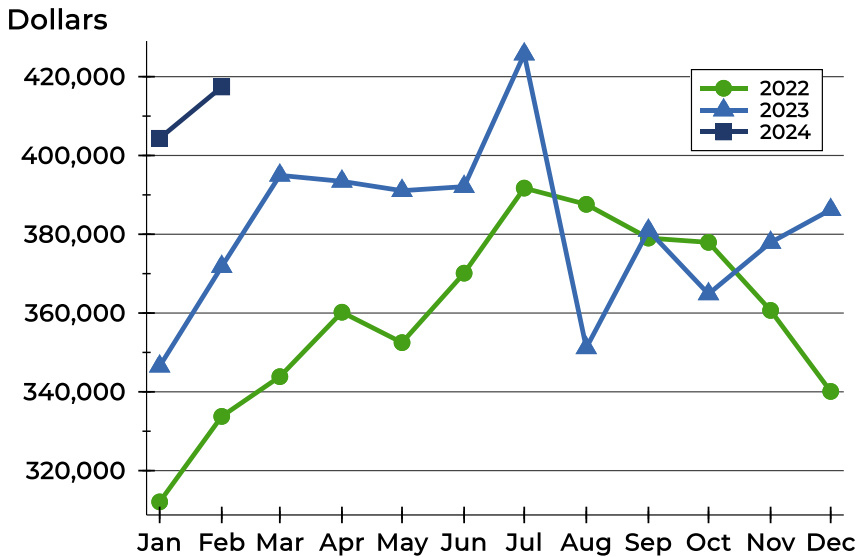
Active Listings by Price Range

Price Range	Active Listings		Months' Supply	List Price		Days on Market		Price as % of Orig.	
	Number	Percent		Average	Median	Avg.	Med.	Avg.	Med.
Below \$25,000	0	0.0%	N/A	N/A	N/A	N/A	N/A	N/A	N/A
\$25,000-\$49,999	0	0.0%	N/A	N/A	N/A	N/A	N/A	N/A	N/A
\$50,000-\$99,999	0	0.0%	N/A	N/A	N/A	N/A	N/A	N/A	N/A
\$100,000-\$124,999	0	0.0%	N/A	N/A	N/A	N/A	N/A	N/A	N/A
\$125,000-\$149,999	3	7.0%	3.6	131,667	125,000	62	84	93.5%	92.6%
\$150,000-\$174,999	3	7.0%	2.2	167,600	165,000	61	31	100.0%	100.0%
\$175,000-\$199,999	1	2.3%	0.9	199,900	199,900	38	38	95.2%	95.2%
\$200,000-\$249,999	8	18.6%	3.1	224,625	222,750	75	36	98.2%	100.0%
\$250,000-\$299,999	4	9.3%	1.1	278,475	279,450	61	44	100.0%	100.0%
\$300,000-\$399,999	11	25.6%	1.3	366,309	379,000	76	58	99.1%	100.0%
\$400,000-\$499,999	7	16.3%	2.8	449,714	450,000	55	38	98.0%	100.0%
\$500,000-\$749,999	1	2.3%	N/A	749,000	749,000	28	28	100.0%	100.0%
\$750,000-\$999,999	3	7.0%	N/A	904,667	869,000	59	35	100.0%	100.0%
\$1,000,000 and up	2	4.7%	N/A	1,649,500	1,649,500	75	75	100.0%	100.0%



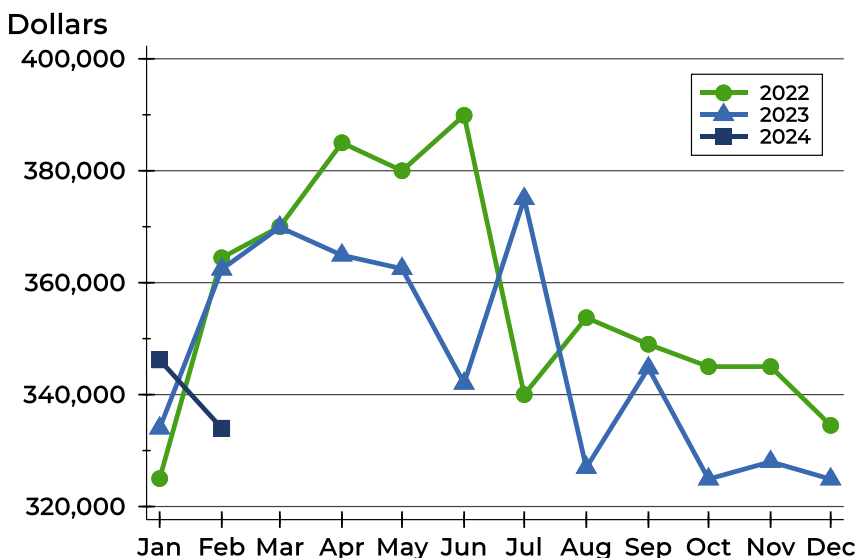
Pottawatomie County Active Listings Analysis

Average Price



Month	2022	2023	2024
January	312,066	346,498	404,365
February	333,767	371,789	417,395
March	343,857	394,956	
April	360,213	393,429	
May	352,492	391,065	
June	370,121	392,093	
July	391,716	425,723	
August	387,600	351,161	
September	379,030	380,967	
October	377,949	364,845	
November	360,668	377,906	
December	340,103	386,226	

Median Price

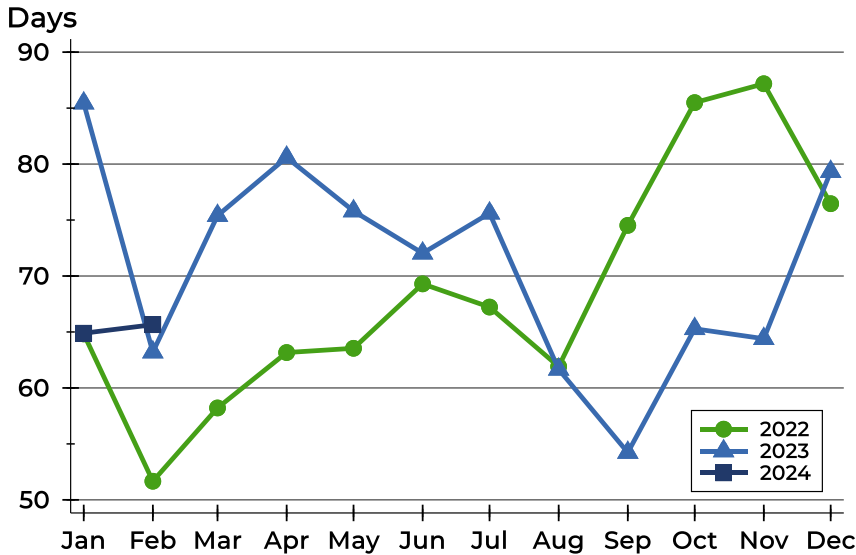


Month	2022	2023	2024
January	325,000	334,000	346,200
February	364,450	362,400	334,000
March	370,000	369,900	
April	385,000	364,900	
May	380,000	362,500	
June	389,900	342,000	
July	340,000	375,000	
August	353,750	326,950	
September	349,000	344,750	
October	345,000	324,900	
November	345,000	328,000	
December	334,500	324,900	



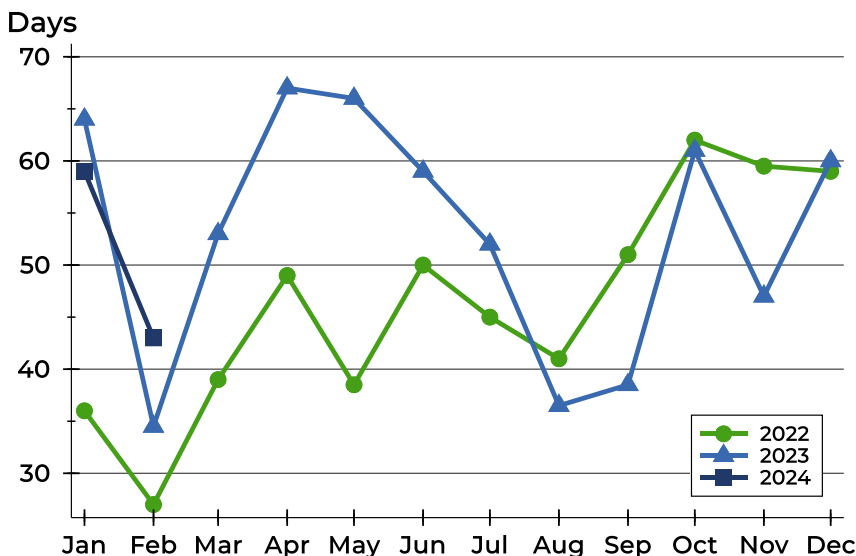
Pottawatomie County Active Listings Analysis

Average DOM



Month	2022	2023	2024
January	65	85	65
February	52	63	66
March	58	75	
April	63	81	
May	64	76	
June	69	72	
July	67	76	
August	62	62	
September	75	54	
October	85	65	
November	87	64	
December	76	79	

Median DOM

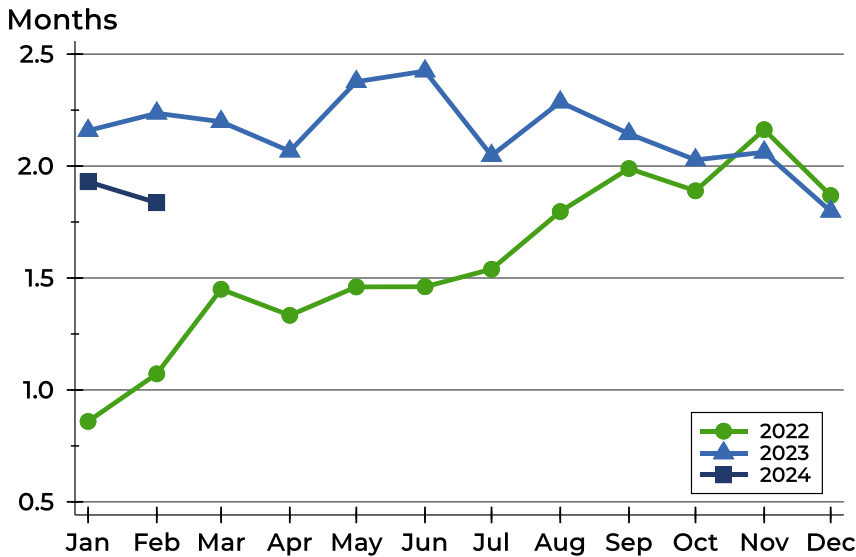


Month	2022	2023	2024
January	36	64	59
February	27	35	43
March	39	53	
April	49	67	
May	39	66	
June	50	59	
July	45	52	
August	41	37	
September	51	39	
October	62	61	
November	60	47	
December	59	60	



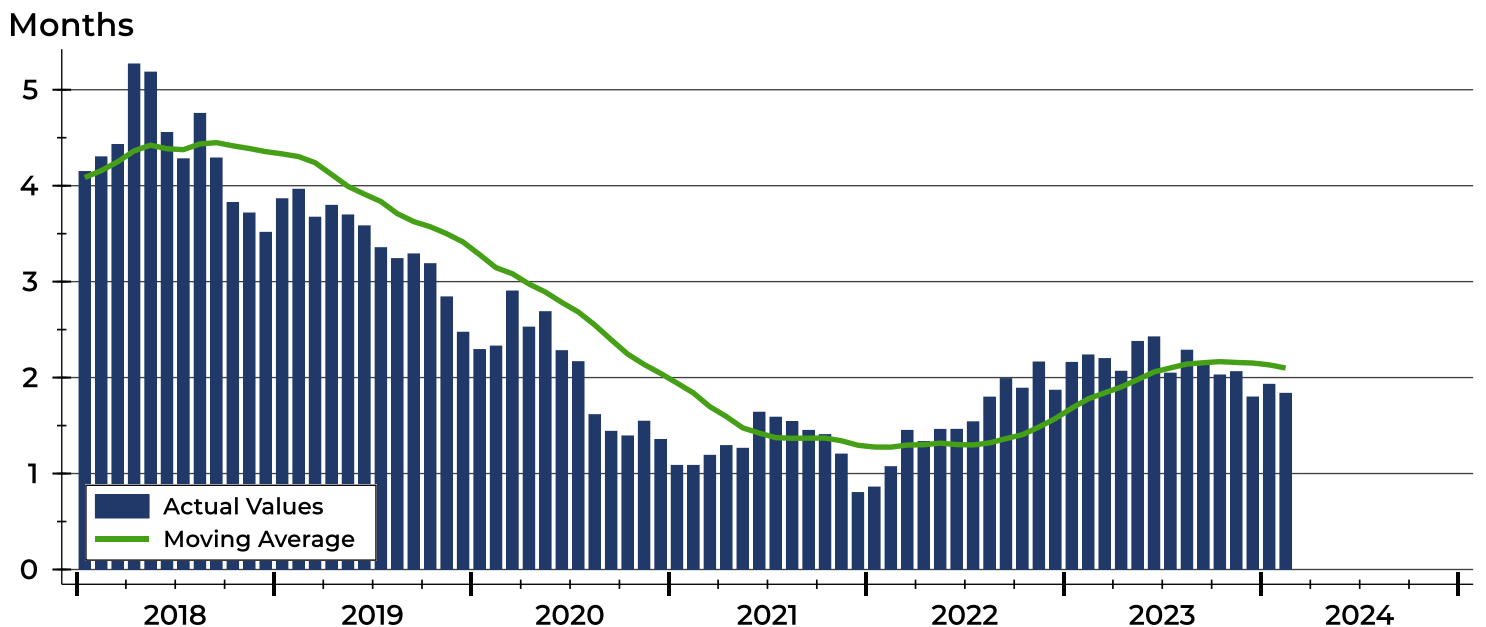
Pottawatomie County Months' Supply Analysis

Months' Supply by Month



Month	2022	2023	2024
January	0.9	2.2	1.9
February	1.1	2.2	1.8
March	1.4	2.2	
April	1.3	2.1	
May	1.5	2.4	
June	1.5	2.4	
July	1.5	2.0	
August	1.8	2.3	
September	2.0	2.1	
October	1.9	2.0	
November	2.2	2.1	
December	1.9	1.8	

History of Month's Supply





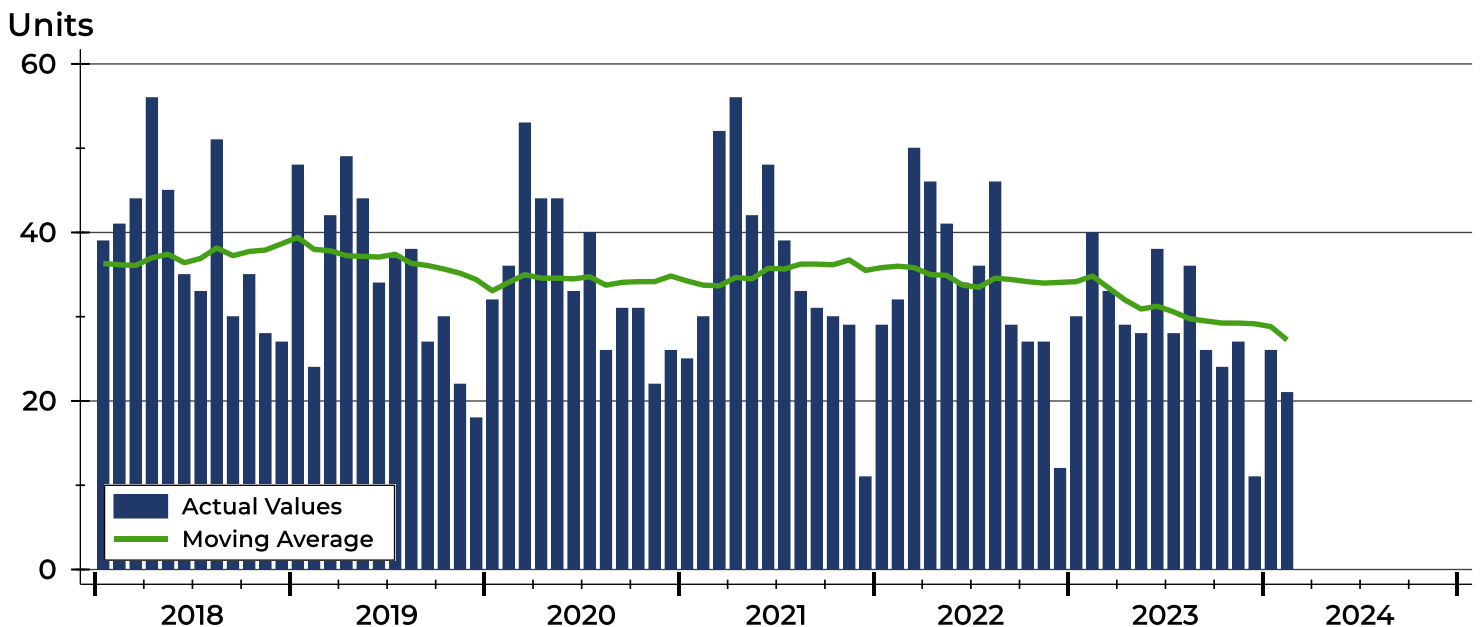
Pottawatomie County New Listings Analysis

Summary Statistics for New Listings		2024	February 2023	Change
Current Month	New Listings	21	40	-47.5%
	Volume (1,000s)	7,714	14,832	-48.0%
	Average List Price	367,329	370,801	-0.9%
	Median List Price	305,000	352,450	-13.5%
Year-to-Date	New Listings	47	70	-32.9%
	Volume (1,000s)	17,485	25,746	-32.1%
	Average List Price	372,015	367,793	1.1%
	Median List Price	334,900	347,000	-3.5%

A total of 21 new listings were added in Pottawatomie County during February, down 47.5% from the same month in 2023. Year-to-date Pottawatomie County has seen 47 new listings.

The median list price of these homes was \$305,000 down from \$352,450 in 2023.

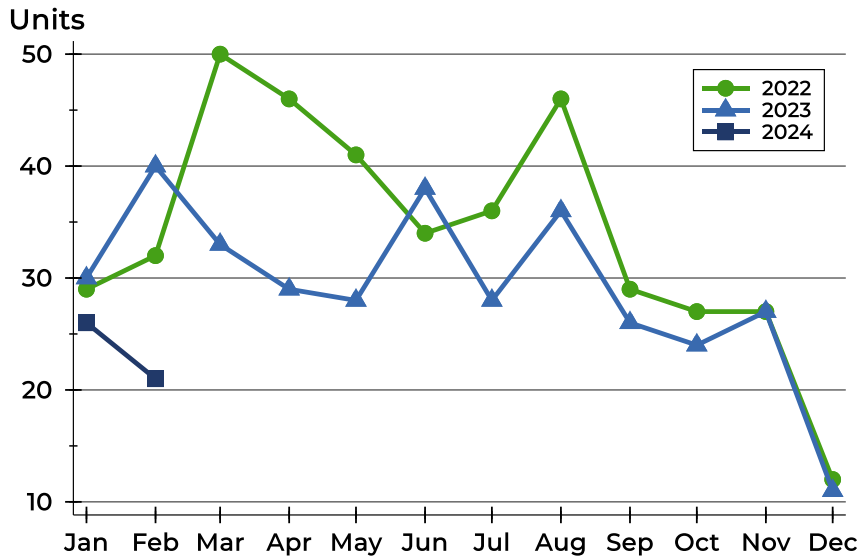
History of New Listings





Pottawatomie County New Listings Analysis

New Listings by Month



Month	2022	2023	2024
January	29	30	26
February	32	40	21
March	50	33	
April	46	29	
May	41	28	
June	34	38	
July	36	28	
August	46	36	
September	29	26	
October	27	24	
November	27	27	
December	12	11	

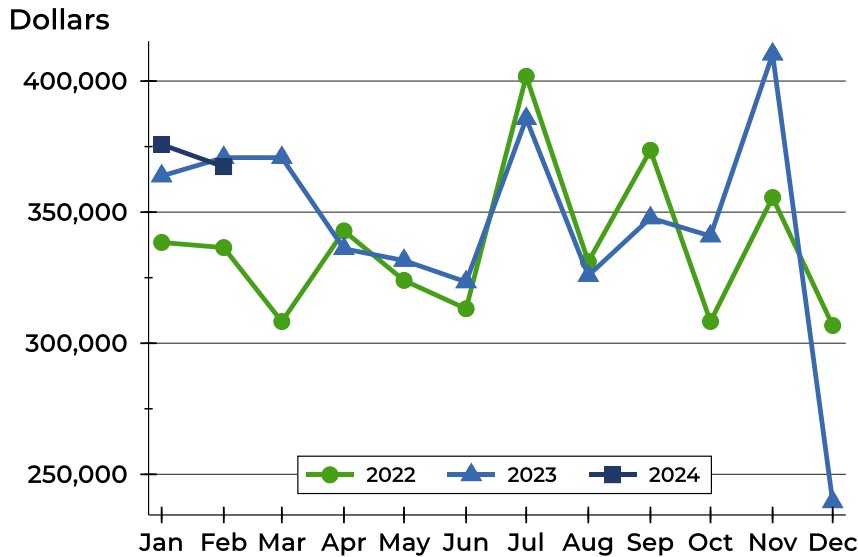
New Listings by Price Range

Price Range	New Listings		List Price		Days on Market		Price as % of Orig.	
	Number	Percent	Average	Median	Avg.	Med.	Avg.	Med.
Below \$25,000	0	0.0%	N/A	N/A	N/A	N/A	N/A	N/A
\$25,000-\$49,999	0	0.0%	N/A	N/A	N/A	N/A	N/A	N/A
\$50,000-\$99,999	0	0.0%	N/A	N/A	N/A	N/A	N/A	N/A
\$100,000-\$124,999	1	4.8%	110,000	110,000	0	0	100.0%	100.0%
\$125,000-\$149,999	1	4.8%	135,000	135,000	3	3	100.0%	100.0%
\$150,000-\$174,999	2	9.5%	162,500	162,500	12	12	100.0%	100.0%
\$175,000-\$199,999	0	0.0%	N/A	N/A	N/A	N/A	N/A	N/A
\$200,000-\$249,999	4	19.0%	240,875	241,500	13	8	100.0%	100.0%
\$250,000-\$299,999	2	9.5%	267,000	267,000	9	9	100.0%	100.0%
\$300,000-\$399,999	5	23.8%	345,180	334,900	11	7	99.5%	100.0%
\$400,000-\$499,999	4	19.0%	443,125	444,000	16	12	100.0%	100.0%
\$500,000-\$749,999	1	4.8%	749,000	749,000	34	34	100.0%	100.0%
\$750,000-\$999,999	0	0.0%	N/A	N/A	N/A	N/A	N/A	N/A
\$1,000,000 and up	1	4.8%	1,399,000	1,399,000	35	35	100.0%	100.0%



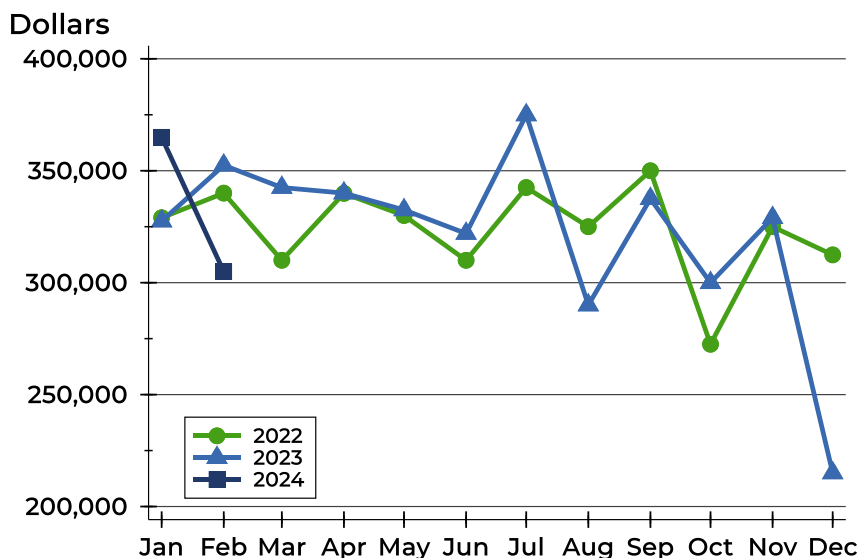
Pottawatomie County New Listings Analysis

Average Price



Month	2022	2023	2024
January	338,438	363,783	375,800
February	336,485	370,801	367,329
March	308,271	370,785	
April	342,847	336,028	
May	323,966	331,554	
June	313,151	323,391	
July	401,797	385,643	
August	331,116	325,803	
September	373,607	347,785	
October	308,297	340,888	
November	355,596	410,263	
December	306,771	239,500	

Median Price



Month	2022	2023	2024
January	329,000	327,500	364,950
February	340,000	352,450	305,000
March	310,000	342,500	
April	339,900	340,000	
May	330,000	332,500	
June	310,000	321,950	
July	342,500	374,900	
August	325,000	290,000	
September	350,000	337,500	
October	272,500	299,950	
November	325,000	329,000	
December	312,425	215,000	



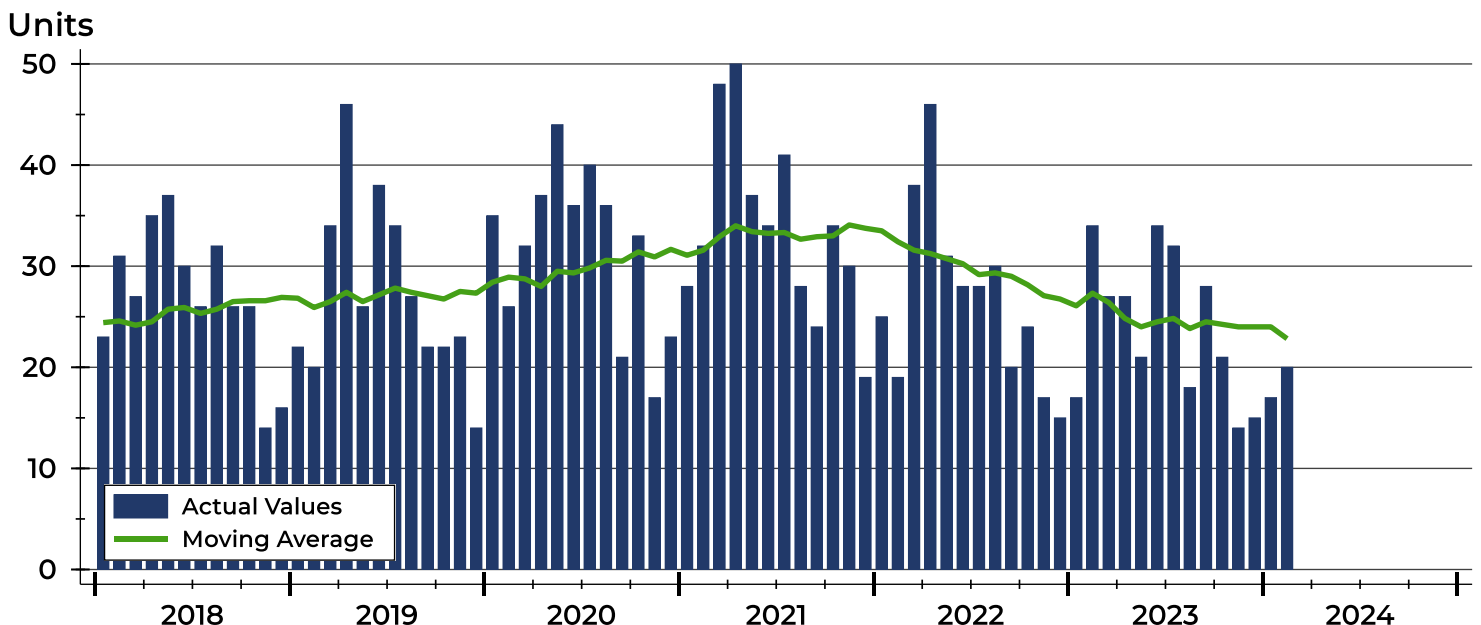
Pottawatomie County Contracts Written Analysis

Summary Statistics for Contracts Written		2024	February 2023	Change	2024	Year-to-Date 2023	Change
Contracts Written		20	34	-41.2%	37	51	-27.5%
Volume (1,000s)		6,974	11,480	-39.3%	12,119	16,573	-26.9%
Average	Sale Price	348,695	337,656	3.3%	327,530	324,969	0.8%
	Days on Market	56	69	-18.8%	62	55	12.7%
	Percent of Original	98.6%	99.5%	-0.9%	99.0%	98.8%	0.2%
Median	Sale Price	310,000	333,500	-7.0%	305,000	330,000	-7.6%
	Days on Market	35	25	40.0%	35	22	59.1%
	Percent of Original	100.0%	99.5%	0.5%	100.0%	98.5%	1.5%

A total of 20 contracts for sale were written in Pottawatomie County during the month of February, down from 34 in 2023. The median list price of these homes was \$310,000, down from \$333,500 the prior year.

Half of the homes that went under contract in February were on the market less than 35 days, compared to 25 days in February 2023.

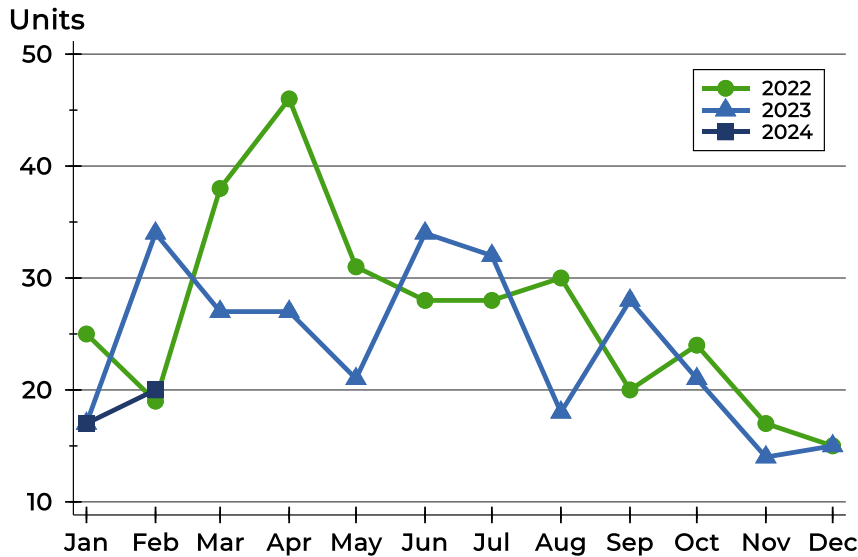
History of Contracts Written





Pottawatomie County Contracts Written Analysis

Contracts Written by Month



Month	2022	2023	2024
January	25	17	17
February	19	34	20
March	38	27	
April	46	27	
May	31	21	
June	28	34	
July	28	32	
August	30	18	
September	20	28	
October	24	21	
November	17	14	
December	15	15	

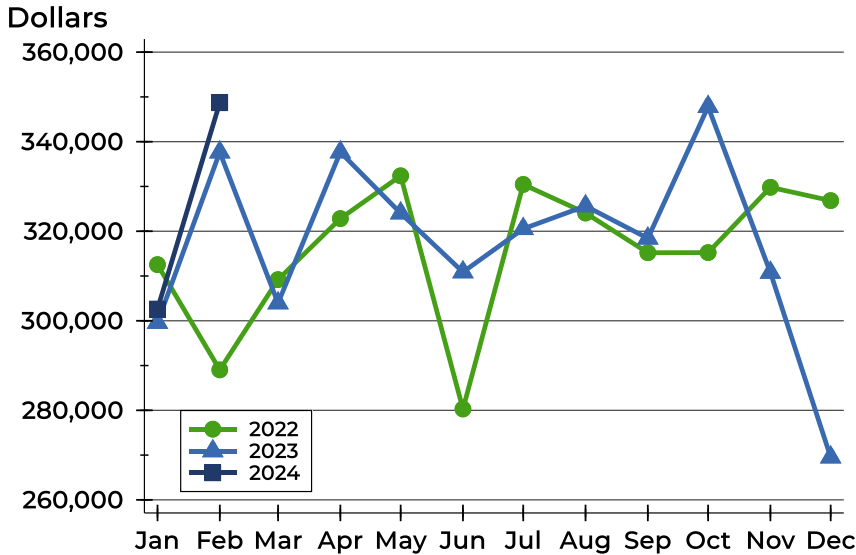
Contracts Written by Price Range

Price Range	Contracts Written		List Price		Days on Market		Price as % of Orig.	
	Number	Percent	Average	Median	Avg.	Med.	Avg.	Med.
Below \$25,000	0	0.0%	N/A	N/A	N/A	N/A	N/A	N/A
\$25,000-\$49,999	0	0.0%	N/A	N/A	N/A	N/A	N/A	N/A
\$50,000-\$99,999	0	0.0%	N/A	N/A	N/A	N/A	N/A	N/A
\$100,000-\$124,999	0	0.0%	N/A	N/A	N/A	N/A	N/A	N/A
\$125,000-\$149,999	1	5.0%	135,000	135,000	3	3	100.0%	100.0%
\$150,000-\$174,999	1	5.0%	160,000	160,000	2	2	100.0%	100.0%
\$175,000-\$199,999	2	10.0%	196,500	196,500	58	58	98.7%	98.7%
\$200,000-\$249,999	2	10.0%	241,750	241,750	6	6	100.0%	100.0%
\$250,000-\$299,999	3	15.0%	272,333	265,000	82	87	95.7%	98.1%
\$300,000-\$399,999	5	25.0%	338,700	327,000	51	9	99.0%	100.0%
\$400,000-\$499,999	2	10.0%	429,000	429,000	112	112	97.7%	97.7%
\$500,000-\$749,999	4	20.0%	608,475	589,500	64	41	99.2%	100.0%
\$750,000-\$999,999	0	0.0%	N/A	N/A	N/A	N/A	N/A	N/A
\$1,000,000 and up	0	0.0%	N/A	N/A	N/A	N/A	N/A	N/A



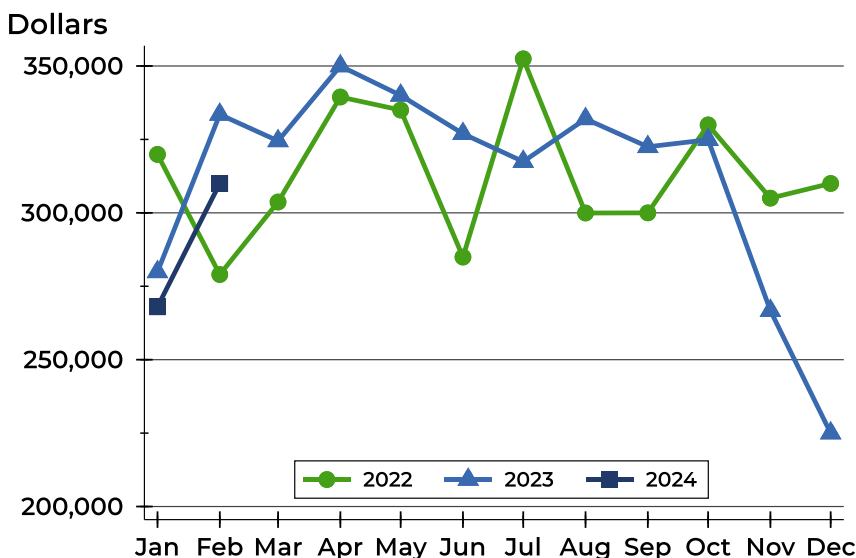
Pottawatomie County Contracts Written Analysis

Average Price



Month	2022	2023	2024
January	312,546	299,594	302,629
February	289,037	337,656	348,695
March	309,196	303,959	
April	322,826	337,663	
May	332,385	324,033	
June	280,298	310,883	
July	330,457	320,544	
August	324,068	325,628	
September	315,205	318,421	
October	315,234	347,819	
November	329,815	310,786	
December	326,840	269,533	

Median Price

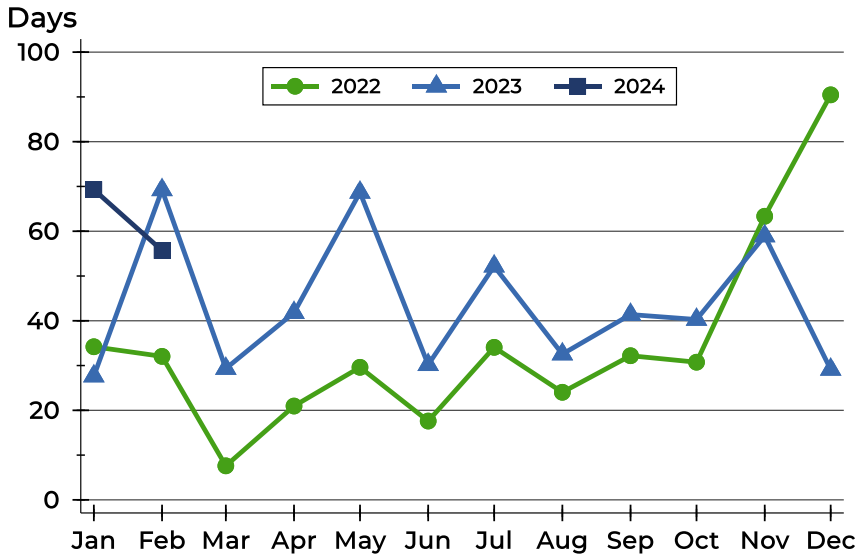


Month	2022	2023	2024
January	319,900	279,900	268,000
February	279,000	333,500	310,000
March	303,700	324,500	
April	339,450	350,000	
May	335,000	340,000	
June	284,950	326,950	
July	352,450	317,450	
August	299,950	332,000	
September	300,000	322,500	
October	329,950	324,900	
November	305,000	266,703	
December	310,000	225,000	



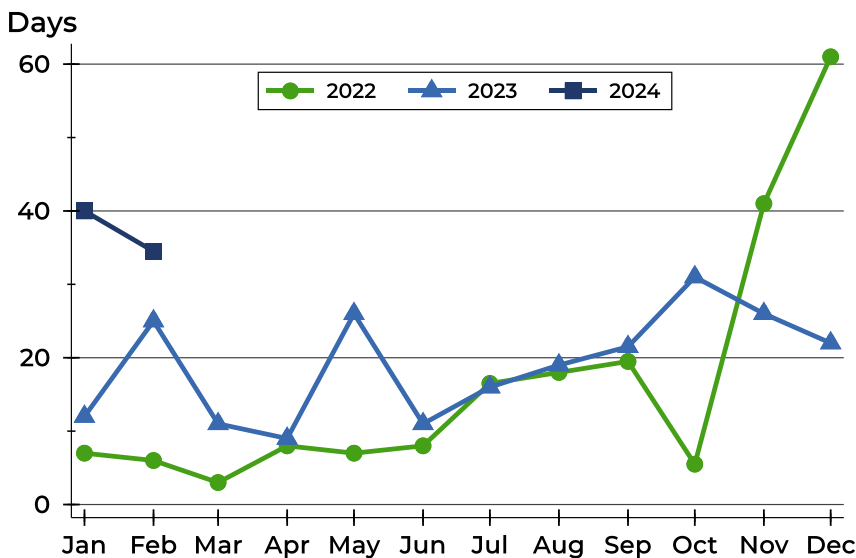
Pottawatomie County Contracts Written Analysis

Average DOM



Month	2022	2023	2024
January	34	28	69
February	32	69	56
March	8	29	
April	21	42	
May	30	69	
June	18	30	
July	34	52	
August	24	33	
September	32	41	
October	31	40	
November	63	59	
December	90	29	

Median DOM



Month	2022	2023	2024
January	7	12	40
February	6	25	35
March	3	11	
April	8	9	
May	7	26	
June	8	11	
July	17	16	
August	18	19	
September	20	22	
October	6	31	
November	41	26	
December	61	22	



Pottawatomie County Pending Contracts Analysis

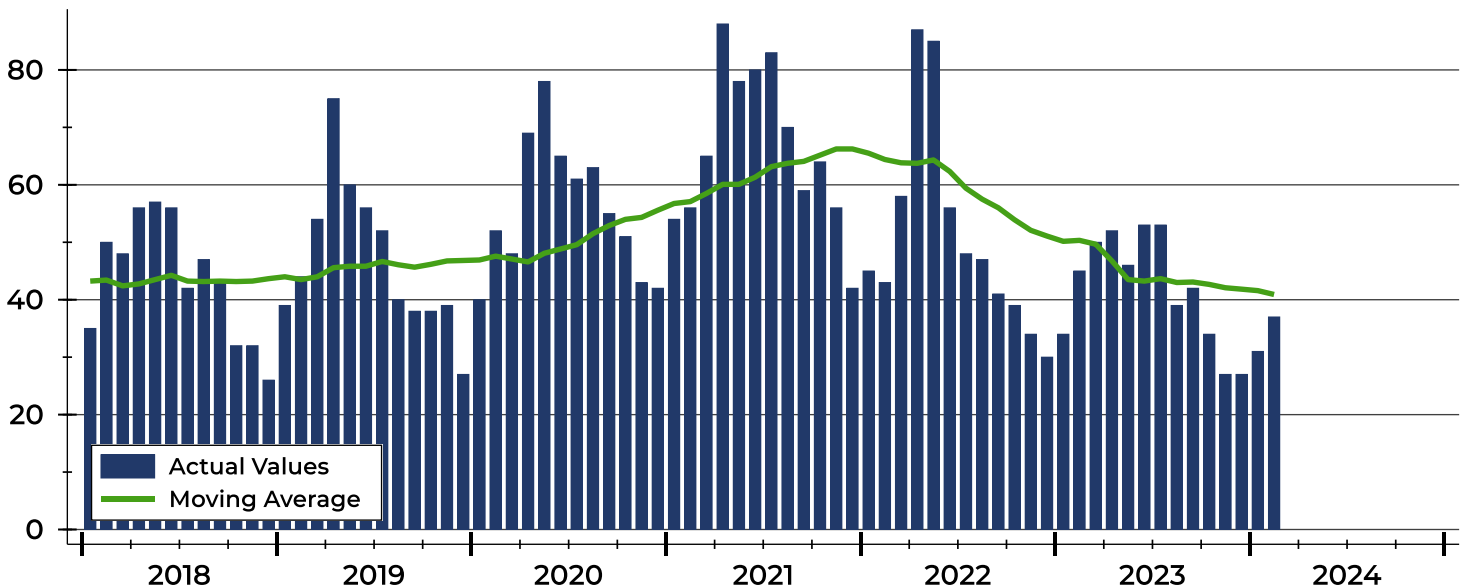
Summary Statistics for Pending Contracts		End of February		
		2024	2023	Change
Pending Contracts		37	45	-17.8%
Volume (1,000s)		12,428	15,094	-17.7%
Average	List Price	335,886	335,418	0.1%
	Days on Market	54	52	3.8%
	Percent of Original	99.9%	100.2%	-0.3%
Median	List Price	305,000	332,500	-8.3%
	Days on Market	34	22	54.5%
	Percent of Original	100.0%	100.0%	0.0%

A total of 37 listings in Pottawatomie County had contracts pending at the end of February, down from 45 contracts pending at the end of February 2023.

Pending contracts reflect listings with a contract in place at the end of the month. In contrast, contracts written measures the number of listings put under contract during the month.

History of Pending Contracts

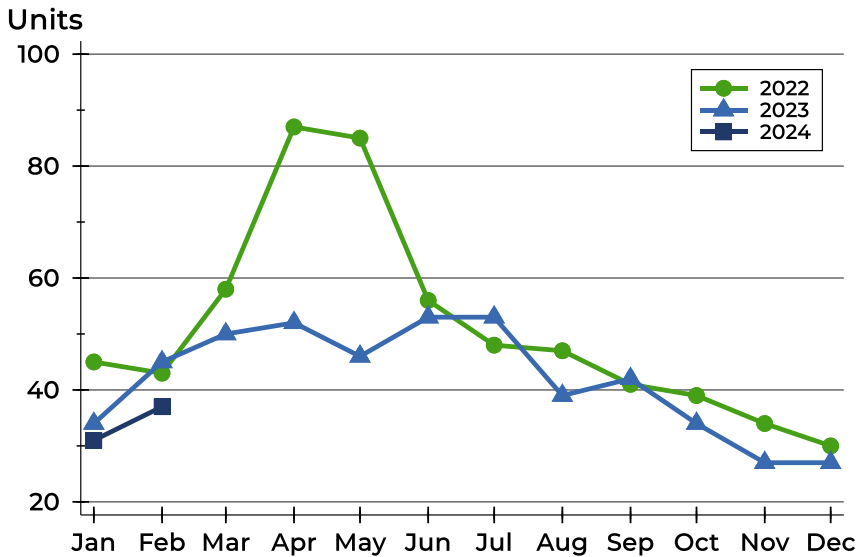
Units





Pottawatomie County Pending Contracts Analysis

Pending Contracts by Month



Month	2022	2023	2024
January	45	34	31
February	43	45	37
March	58	50	
April	87	52	
May	85	46	
June	56	53	
July	48	53	
August	47	39	
September	41	42	
October	39	34	
November	34	27	
December	30	27	

Pending Contracts by Price Range

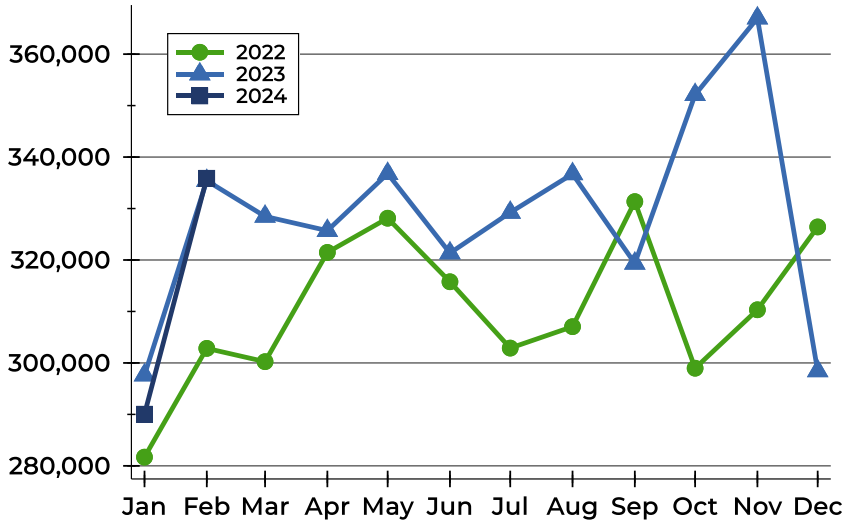
Price Range	Pending Contracts		List Price		Days on Market		Price as % of Orig.	
	Number	Percent	Average	Median	Avg.	Med.	Avg.	Med.
Below \$25,000	0	0.0%	N/A	N/A	N/A	N/A	N/A	N/A
\$25,000-\$49,999	0	0.0%	N/A	N/A	N/A	N/A	N/A	N/A
\$50,000-\$99,999	1	2.7%	85,000	85,000	13	13	100.0%	100.0%
\$100,000-\$124,999	1	2.7%	110,000	110,000	0	0	100.0%	100.0%
\$125,000-\$149,999	2	5.4%	142,349	142,349	31	31	100.0%	100.0%
\$150,000-\$174,999	2	5.4%	165,000	165,000	2	2	100.0%	100.0%
\$175,000-\$199,999	2	5.4%	196,500	196,500	58	58	98.7%	98.7%
\$200,000-\$249,999	6	16.2%	237,050	238,950	22	20	100.0%	100.0%
\$250,000-\$299,999	4	10.8%	270,000	266,500	123	64	106.2%	99.6%
\$300,000-\$399,999	9	24.3%	346,767	331,000	35	5	99.2%	100.0%
\$400,000-\$499,999	4	10.8%	442,000	442,000	117	112	95.9%	96.1%
\$500,000-\$749,999	6	16.2%	638,983	665,000	65	41	99.4%	100.0%
\$750,000-\$999,999	0	0.0%	N/A	N/A	N/A	N/A	N/A	N/A
\$1,000,000 and up	0	0.0%	N/A	N/A	N/A	N/A	N/A	N/A



Pottawatomie County Pending Contracts Analysis

Average Price

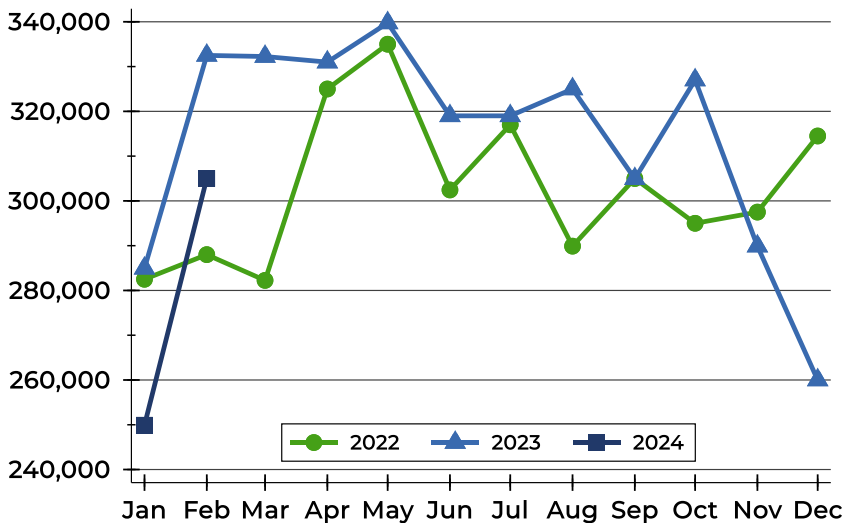
Dollars



Month	2022	2023	2024
January	281,700	297,634	290,045
February	302,832	335,418	335,886
March	300,248	328,472	
April	321,471	325,708	
May	328,125	336,778	
June	315,771	321,353	
July	302,886	329,236	
August	307,048	336,728	
September	331,346	319,350	
October	298,977	352,121	
November	310,334	366,993	
December	326,423	298,444	

Median Price

Dollars

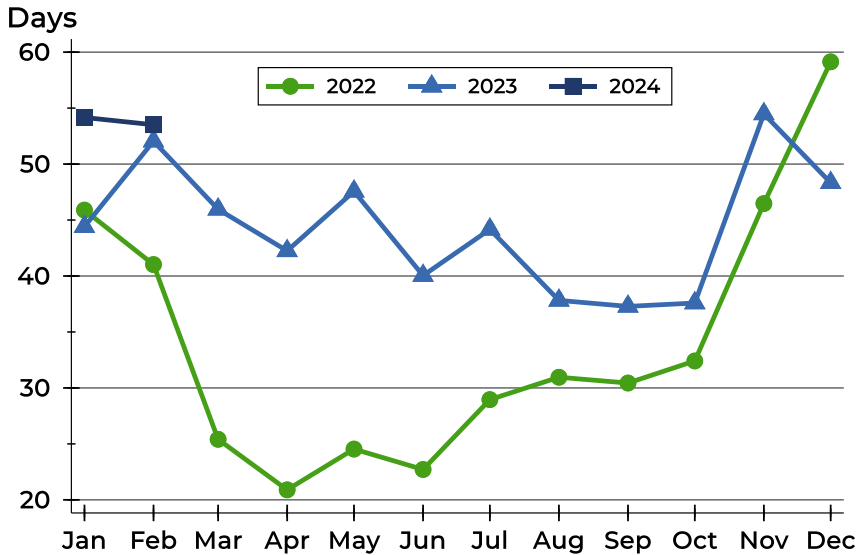


Month	2022	2023	2024
January	282,500	284,950	249,900
February	288,000	332,500	305,000
March	282,250	332,250	
April	325,000	331,000	
May	335,000	339,750	
June	302,450	319,000	
July	317,000	319,000	
August	289,900	325,000	
September	305,000	304,950	
October	295,000	327,000	
November	297,500	289,900	
December	314,500	260,000	



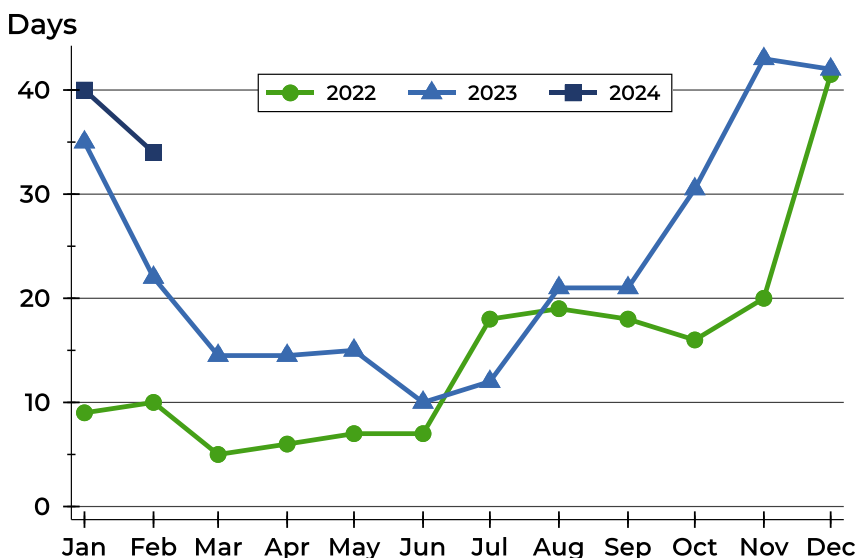
Pottawatomie County Pending Contracts Analysis

Average DOM



Month	2022	2023	2024
January	46	44	54
February	41	52	54
March	25	46	
April	21	42	
May	25	48	
June	23	40	
July	29	44	
August	31	38	
September	30	37	
October	32	38	
November	46	54	
December	59	48	

Median DOM



Month	2022	2023	2024
January	9	35	40
February	10	22	34
March	5	15	
April	6	15	
May	7	15	
June	7	10	
July	18	12	
August	19	21	
September	18	21	
October	16	31	
November	20	43	
December	42	42	