



**March  
2024**

# Flint Hills MLS Statistics



**FLINT HILLS  
ASSOCIATION  
OF REALTORS®**

## Pottawatomie County Housing Report



### Market Overview

#### Pottawatomie County Home Sales Fell in March

Total home sales in Pottawatomie County fell last month to 24 units, compared to 26 units in March 2023. Total sales volume was \$7.6 million, down from a year earlier.

The median sale price in March was \$288,500, down from \$324,500 a year earlier. Homes that sold in March were typically on the market for 40 days and sold for 99.9% of their list prices.

#### Pottawatomie County Active Listings Down at End of March

The total number of active listings in Pottawatomie County at the end of March was 43 units, down from 61 at the same point in 2023. This represents a 1.8 months' supply of homes available for sale. The median list price of homes on the market at the end of March was \$359,900.

During March, a total of 35 contracts were written up from 27 in March 2023. At the end of the month, there were 48 contracts still pending.

### Report Contents

- Summary Statistics – Page 2
- Closed Listing Analysis – Page 3
- Active Listings Analysis – Page 7
- Months' Supply Analysis – Page 11
- New Listings Analysis – Page 12
- Contracts Written Analysis – Page 15
- Pending Contracts Analysis – Page 19

### Contact Information

Margaret Pendleton, Association Executive  
 Flint Hills Association of REALTORS®  
 205 S. Seth Child Road  
 Manhattan, KS 66502  
 785-776-1203  
[ae@flinthillsrealtors.net](mailto:ae@flinthillsrealtors.net)  
[www.flinthillsrealtors.net](http://www.flinthillsrealtors.net)



**March  
2024**

# Flint Hills MLS Statistics



**FLINT HILLS  
ASSOCIATION  
OF REALTORS®**

## Pottawatomie County Summary Statistics

March MLS Statistics Three-year History		Current Month			Year-to-Date		
		2024	2023	2022	2024	2023	2022
<b>Home Sales</b>		<b>24</b>	<b>26</b>	<b>14</b>	<b>52</b>	<b>60</b>	<b>60</b>
Change from prior year		-7.7%	85.7%	-50.0%	-13.3%	0.0%	-20.0%
<b>Active Listings</b>		<b>43</b>	<b>61</b>	<b>47</b>	<b>N/A</b>	<b>N/A</b>	<b>N/A</b>
Change from prior year		-29.5%	29.8%	27.0%			
<b>Months' Supply</b>		<b>1.8</b>	<b>2.2</b>	<b>1.4</b>	<b>N/A</b>	<b>N/A</b>	<b>N/A</b>
Change from prior year		-18.2%	57.1%	16.7%			
<b>New Listings</b>		<b>34</b>	<b>33</b>	<b>50</b>	<b>82</b>	<b>103</b>	<b>111</b>
Change from prior year		3.0%	-34.0%	-3.8%	-20.4%	-7.2%	3.7%
<b>Contracts Written</b>		<b>35</b>	<b>27</b>	<b>38</b>	<b>70</b>	<b>78</b>	<b>82</b>
Change from prior year		29.6%	-28.9%	-20.8%	-10.3%	-4.9%	-24.1%
<b>Pending Contracts</b>		<b>48</b>	<b>50</b>	<b>58</b>	<b>N/A</b>	<b>N/A</b>	<b>N/A</b>
Change from prior year		-4.0%	-13.8%	-10.8%			
<b>Sales Volume (1,000s)</b>		<b>7,607</b>	<b>8,294</b>	<b>3,852</b>	<b>14,914</b>	<b>18,954</b>	<b>17,468</b>
Change from prior year		-8.3%	115.3%	-51.2%	-21.3%	8.5%	-14.2%
<b>Average</b>	<b>Sale Price</b>	<b>316,938</b>	<b>319,004</b>	<b>275,167</b>	<b>286,809</b>	<b>315,894</b>	<b>291,137</b>
	Change from prior year	-0.6%	15.9%	-2.4%	-9.2%	8.5%	7.2%
	<b>List Price of Actives</b>	<b>440,809</b>	<b>394,956</b>	<b>343,857</b>	<b>N/A</b>	<b>N/A</b>	<b>N/A</b>
	Change from prior year	11.6%	14.9%	3.4%			
	<b>Days on Market</b>	<b>61</b>	<b>46</b>	<b>26</b>	<b>57</b>	<b>52</b>	<b>32</b>
Change from prior year	32.6%	76.9%	-7.1%	9.6%	62.5%	-23.8%	
<b>Percent of List</b>	<b>98.3%</b>	<b>100.8%</b>	<b>102.6%</b>	<b>98.9%</b>	<b>99.5%</b>	<b>100.9%</b>	
Change from prior year	-2.5%	-1.8%	2.9%	-0.6%	-1.4%	2.4%	
<b>Percent of Original</b>	<b>97.1%</b>	<b>99.9%</b>	<b>102.1%</b>	<b>97.2%</b>	<b>97.3%</b>	<b>100.0%</b>	
Change from prior year	-2.8%	-2.2%	2.8%	-0.1%	-2.7%	2.6%	
<b>Median</b>	<b>Sale Price</b>	<b>288,500</b>	<b>324,500</b>	<b>289,400</b>	<b>267,500</b>	<b>306,500</b>	<b>293,400</b>
	Change from prior year	-11.1%	12.1%	5.2%	-12.7%	4.5%	6.7%
	<b>List Price of Actives</b>	<b>359,900</b>	<b>369,900</b>	<b>370,000</b>	<b>N/A</b>	<b>N/A</b>	<b>N/A</b>
	Change from prior year	-2.7%	0.0%	23.7%			
	<b>Days on Market</b>	<b>40</b>	<b>16</b>	<b>6</b>	<b>40</b>	<b>24</b>	<b>12</b>
Change from prior year	150.0%	166.7%	-50.0%	66.7%	100.0%	-25.0%	
<b>Percent of List</b>	<b>99.9%</b>	<b>100.0%</b>	<b>102.3%</b>	<b>99.6%</b>	<b>99.8%</b>	<b>100.0%</b>	
Change from prior year	-0.1%	-2.2%	2.3%	-0.2%	-0.2%	0.0%	
<b>Percent of Original</b>	<b>99.1%</b>	<b>99.0%</b>	<b>102.3%</b>	<b>98.7%</b>	<b>97.9%</b>	<b>100.0%</b>	
Change from prior year	0.1%	-3.2%	2.3%	0.8%	-2.1%	0.0%	

Note: Year-to-date statistics cannot be calculated for Active Listings, Months' Supply and Pending Contracts.



# Pottawatomie County Closed Listings Analysis

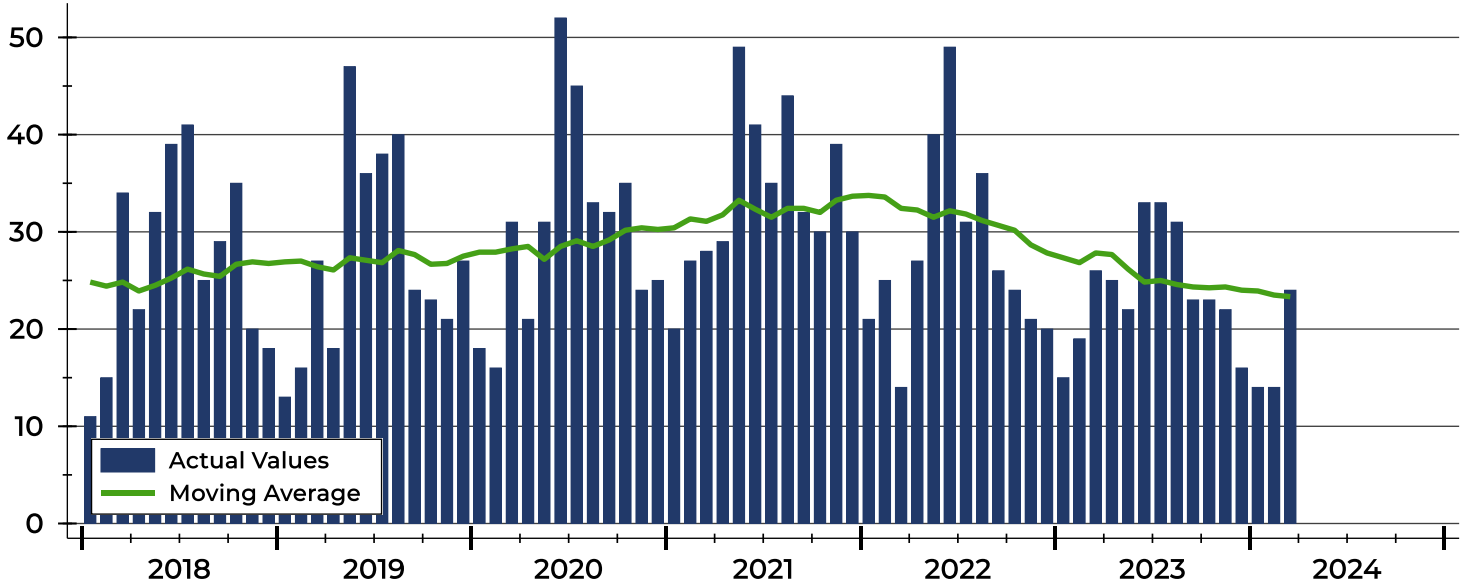
Summary Statistics for Closed Listings		2024	March 2023	Change	2024	Year-to-Date 2023	Change
Closed Listings		24	26	-7.7%	52	60	-13.3%
Volume (1,000s)		7,607	8,294	-8.3%	14,914	18,954	-21.3%
Months' Supply		1.8	2.2	-18.2%	N/A	N/A	N/A
Average	Sale Price	316,938	319,004	-0.6%	286,809	315,894	-9.2%
	Days on Market	61	46	32.6%	57	52	9.6%
	Percent of List	98.3%	100.8%	-2.5%	98.9%	99.5%	-0.6%
	Percent of Original	97.1%	99.9%	-2.8%	97.2%	97.3%	-0.1%
Median	Sale Price	288,500	324,500	-11.1%	267,500	306,500	-12.7%
	Days on Market	40	16	150.0%	40	24	66.7%
	Percent of List	99.9%	100.0%	-0.1%	99.6%	99.8%	-0.2%
	Percent of Original	99.1%	99.0%	0.1%	98.7%	97.9%	0.8%

A total of 24 homes sold in Pottawatomie County in March, down from 26 units in March 2023. Total sales volume fell to \$7.6 million compared to \$8.3 million in the previous year.

The median sales price in March was \$288,500, down 11.1% compared to the prior year. Median days on market was 40 days, up from 32 days in February, and up from 16 in March 2023.

## History of Closed Listings

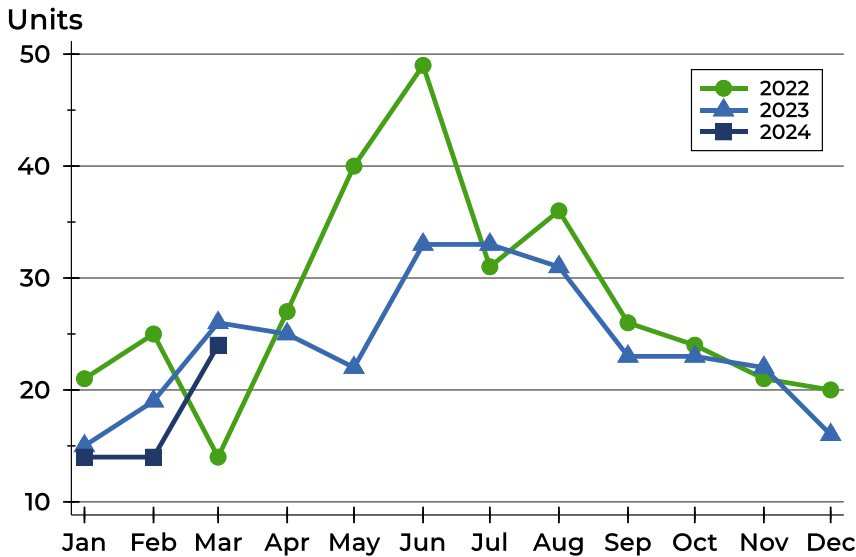
Units





## Pottawatomie County Closed Listings Analysis

### Closed Listings by Month



Month	2022	2023	2024
January	21	15	14
February	25	19	14
March	14	26	24
April	27	25	25
May	40	22	22
June	49	33	33
July	31	33	31
August	36	31	31
September	26	23	23
October	24	23	23
November	21	22	22
December	20	16	16

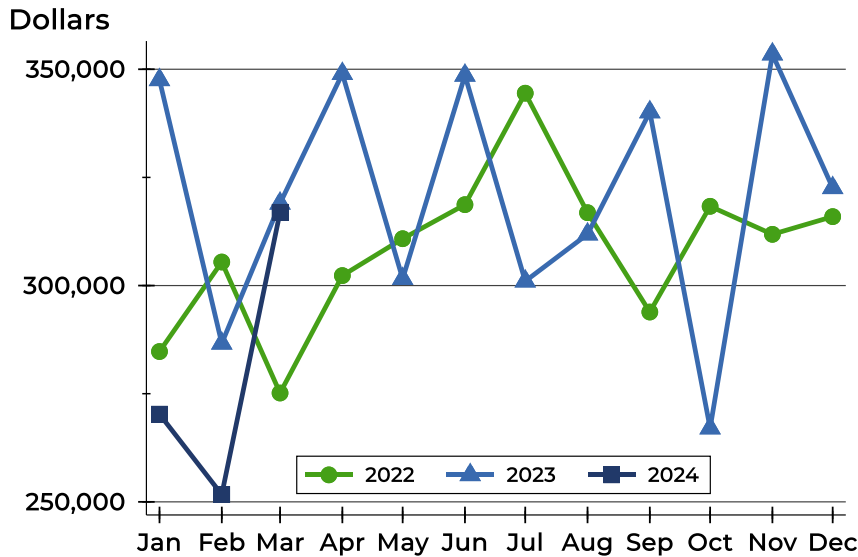
### Closed Listings by Price Range

Price Range	Sales		Months' Supply	Sale Price		Days on Market		Price as % of List		Price as % of Orig.	
	Number	Percent		Average	Median	Avg.	Med.	Avg.	Med.	Avg.	Med.
Below \$25,000	0	0.0%	N/A	N/A	N/A	N/A	N/A	N/A	N/A	N/A	N/A
\$25,000-\$49,999	0	0.0%	N/A	N/A	N/A	N/A	N/A	N/A	N/A	N/A	N/A
\$50,000-\$99,999	0	0.0%	N/A	N/A	N/A	N/A	N/A	N/A	N/A	N/A	N/A
\$100,000-\$124,999	1	4.2%	0.0	110,000	110,000	0	0	100.0%	100.0%	100.0%	100.0%
\$125,000-\$149,999	2	8.3%	2.2	142,000	142,000	44	44	99.8%	99.8%	99.8%	99.8%
\$150,000-\$174,999	1	4.2%	2.2	160,000	160,000	2	2	100.0%	100.0%	100.0%	100.0%
\$175,000-\$199,999	2	8.3%	0.0	189,000	189,000	94	94	93.2%	93.2%	92.0%	92.0%
\$200,000-\$249,999	2	8.3%	0.9	228,000	228,000	22	22	97.9%	97.9%	97.9%	97.9%
\$250,000-\$299,999	4	16.7%	1.1	268,000	267,500	116	51	98.5%	99.3%	97.4%	98.9%
\$300,000-\$399,999	6	25.0%	2.2	353,000	351,250	14	7	99.9%	100.0%	99.7%	99.9%
\$400,000-\$499,999	3	12.5%	2.5	438,667	436,000	123	125	99.9%	100.2%	94.4%	96.7%
\$500,000-\$749,999	3	12.5%	1.4	570,833	520,000	74	41	94.9%	94.7%	93.8%	94.4%
\$750,000-\$999,999	0	0.0%	N/A	N/A	N/A	N/A	N/A	N/A	N/A	N/A	N/A
\$1,000,000 and up	0	0.0%	N/A	N/A	N/A	N/A	N/A	N/A	N/A	N/A	N/A



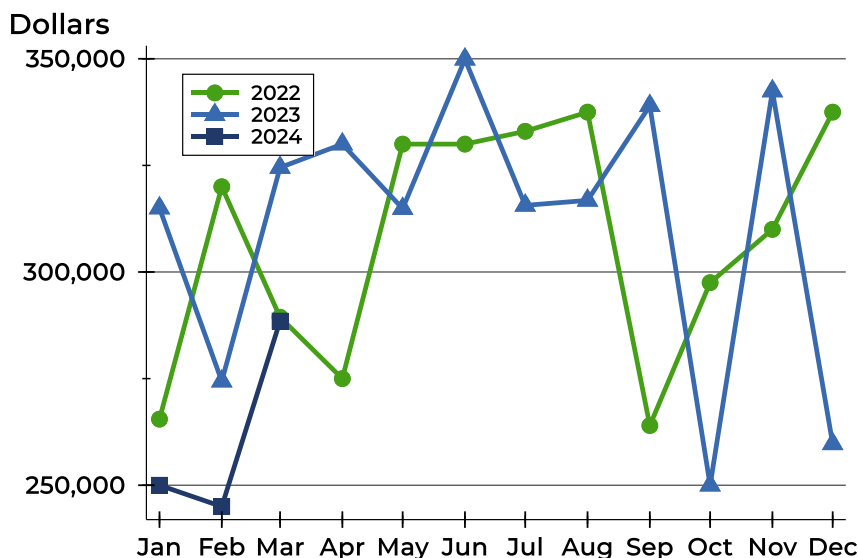
# Pottawatomie County Closed Listings Analysis

## Average Price



Month	2022	2023	2024
<b>January</b>	284,752	347,548	<b>270,281</b>
<b>February</b>	305,443	286,647	<b>251,689</b>
<b>March</b>	275,167	319,004	<b>316,938</b>
<b>April</b>	302,308	348,976	
<b>May</b>	310,831	301,576	
<b>June</b>	318,706	348,576	
<b>July</b>	344,468	301,005	
<b>August</b>	316,847	311,874	
<b>September</b>	293,881	340,115	
<b>October</b>	318,325	267,050	
<b>November</b>	311,843	353,491	
<b>December</b>	315,935	322,588	

## Median Price

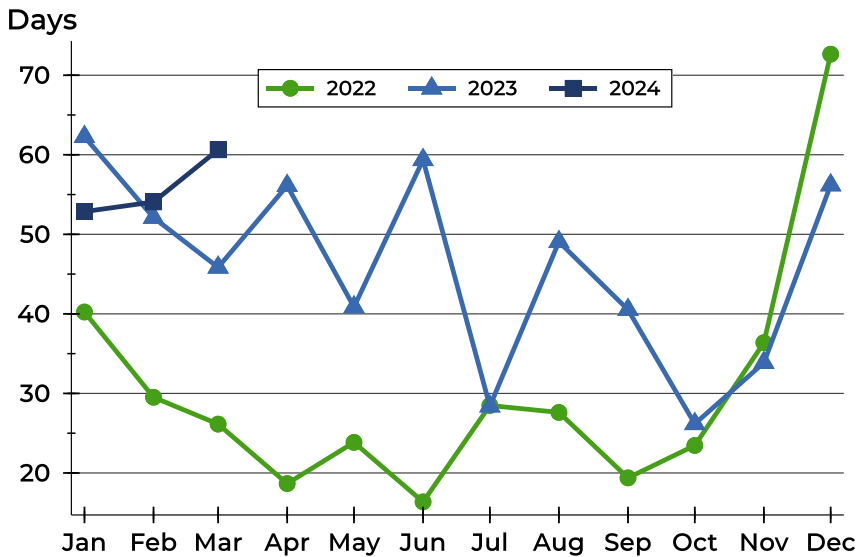


Month	2022	2023	2024
<b>January</b>	265,500	315,000	<b>250,000</b>
<b>February</b>	320,000	274,400	<b>245,000</b>
<b>March</b>	289,400	324,500	<b>288,500</b>
<b>April</b>	275,000	330,000	
<b>May</b>	330,000	314,875	
<b>June</b>	330,000	349,900	
<b>July</b>	333,000	315,626	
<b>August</b>	337,500	316,806	
<b>September</b>	264,000	339,000	
<b>October</b>	297,500	250,000	
<b>November</b>	310,000	342,450	
<b>December</b>	337,500	259,703	



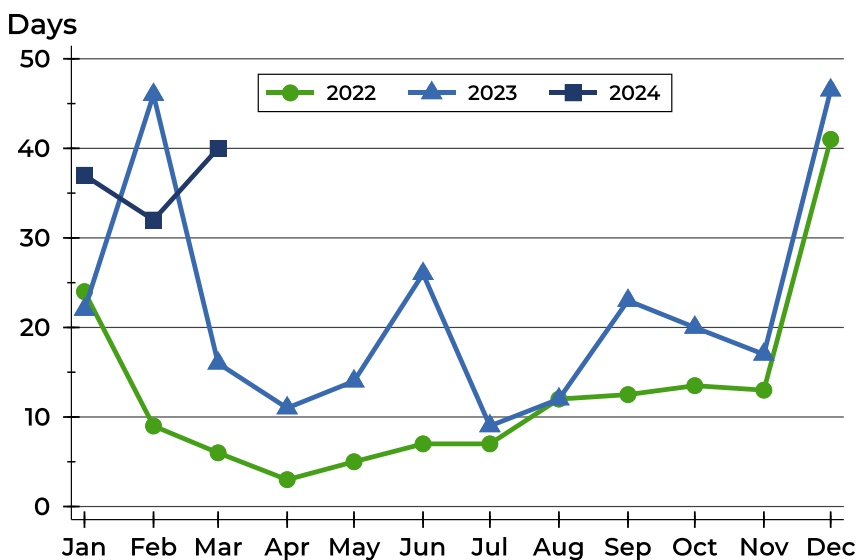
# Pottawatomie County Closed Listings Analysis

## Average DOM



Month	2022	2023	2024
January	40	62	<b>53</b>
February	30	52	<b>54</b>
March	26	46	<b>61</b>
April	19	56	
May	24	41	
June	16	59	
July	28	28	
August	28	49	
September	19	41	
October	23	26	
November	36	34	
December	73	56	

## Median DOM



Month	2022	2023	2024
January	24	22	<b>37</b>
February	9	46	<b>32</b>
March	6	16	<b>40</b>
April	3	11	
May	5	14	
June	7	26	
July	7	9	
August	12	12	
September	13	23	
October	14	20	
November	13	17	
December	41	47	



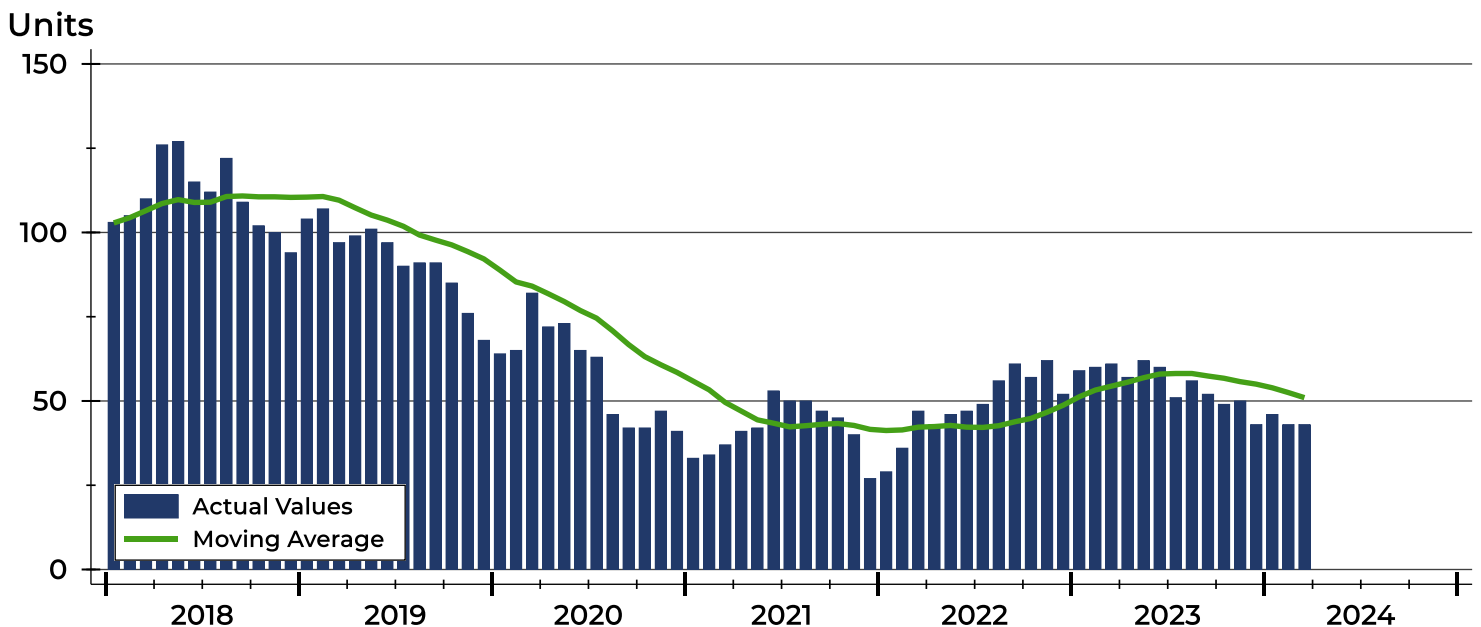
# Pottawatomie County Active Listings Analysis

Summary Statistics for Active Listings		2024	End of March 2023	Change
Active Listings		43	61	-29.5%
Volume (1,000s)		18,955	24,092	-21.3%
Months' Supply		1.8	2.2	-18.2%
Average	List Price	440,809	394,956	11.6%
	Days on Market	60	75	-20.0%
	Percent of Original	98.7%	98.6%	0.1%
Median	List Price	359,900	369,900	-2.7%
	Days on Market	41	53	-22.6%
	Percent of Original	100.0%	100.0%	0.0%

A total of 43 homes were available for sale in Pottawatomie County at the end of March. This represents a 1.8 months' supply of active listings.

The median list price of homes on the market at the end of March was \$359,900, down 2.7% from 2023. The typical time on market for active listings was 41 days, down from 53 days a year earlier.

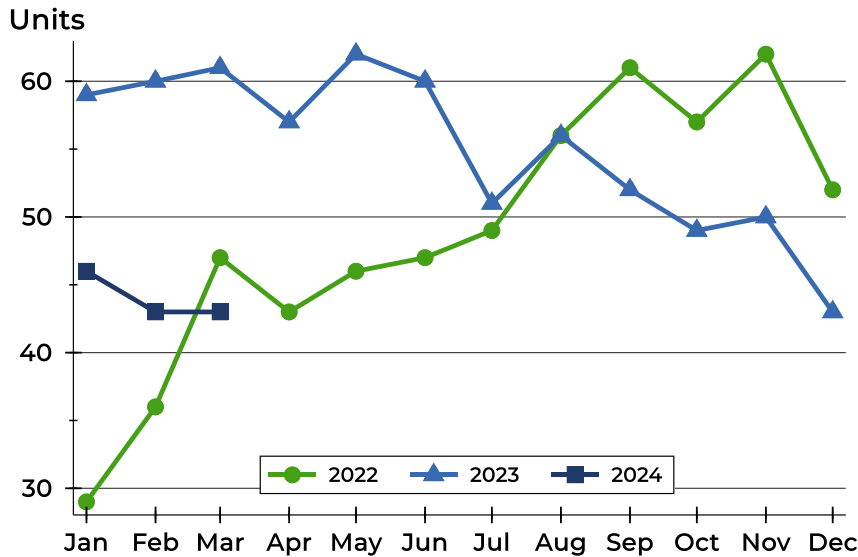
## History of Active Listings





## Pottawatomie County Active Listings Analysis

### Active Listings by Month



Month	2022	2023	2024
January	29	59	<b>46</b>
February	36	60	<b>43</b>
March	47	61	<b>43</b>
April	43	57	
May	46	62	
June	47	60	
July	49	51	
August	56	56	
September	61	52	
October	57	49	
November	62	50	
December	52	43	

### Active Listings by Price Range

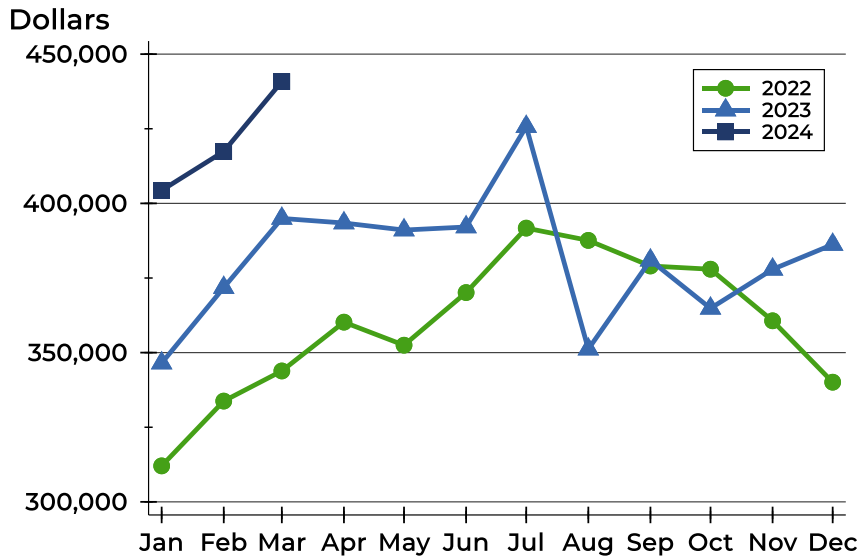
Price Range	Active Listings		Months' Supply	List Price		Days on Market		Price as % of Orig.	
	Number	Percent		Average	Median	Avg.	Med.	Avg.	Med.
Below \$25,000	0	0.0%	N/A	N/A	N/A	N/A	N/A	N/A	N/A
\$25,000-\$49,999	0	0.0%	N/A	N/A	N/A	N/A	N/A	N/A	N/A
\$50,000-\$99,999	0	0.0%	N/A	N/A	N/A	N/A	N/A	N/A	N/A
\$100,000-\$124,999	0	0.0%	0.0	N/A	N/A	N/A	N/A	N/A	N/A
\$125,000-\$149,999	2	4.7%	2.2	125,000	125,000	64	64	96.3%	96.3%
\$150,000-\$174,999	3	7.0%	2.2	167,600	165,000	71	47	100.0%	100.0%
\$175,000-\$199,999	0	0.0%	0.0	N/A	N/A	N/A	N/A	N/A	N/A
\$200,000-\$249,999	2	4.7%	0.9	221,250	221,250	34	34	92.6%	92.6%
\$250,000-\$299,999	4	9.3%	1.1	281,225	287,450	76	60	98.7%	99.0%
\$300,000-\$399,999	18	41.9%	2.2	349,089	342,500	61	27	99.5%	100.0%
\$400,000-\$499,999	6	14.0%	2.5	423,333	415,000	32	26	99.0%	100.0%
\$500,000-\$749,999	3	7.0%	1.4	644,667	645,000	35	25	100.0%	100.0%
\$750,000-\$999,999	3	7.0%	N/A	892,667	869,000	90	66	98.8%	100.0%
\$1,000,000 and up	2	4.7%	N/A	1,599,500	1,599,500	106	106	96.4%	96.4%





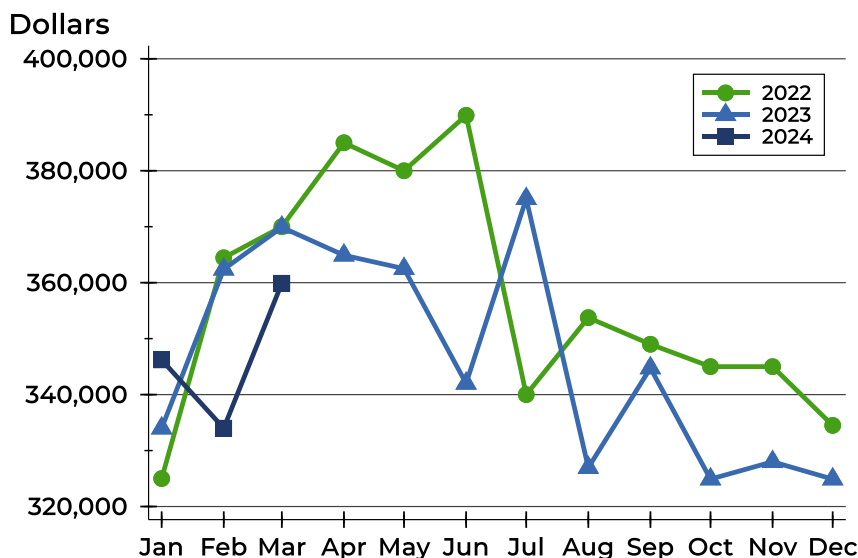
## Pottawatomie County Active Listings Analysis

### Average Price



Month	2022	2023	2024
<b>January</b>	312,066	346,498	<b>404,365</b>
<b>February</b>	333,767	371,789	<b>417,395</b>
<b>March</b>	343,857	394,956	<b>440,809</b>
<b>April</b>	360,213	393,429	
<b>May</b>	352,492	391,065	
<b>June</b>	370,121	392,093	
<b>July</b>	391,716	425,723	
<b>August</b>	387,600	351,161	
<b>September</b>	379,030	380,967	
<b>October</b>	377,949	364,845	
<b>November</b>	360,668	377,906	
<b>December</b>	340,103	386,226	

### Median Price

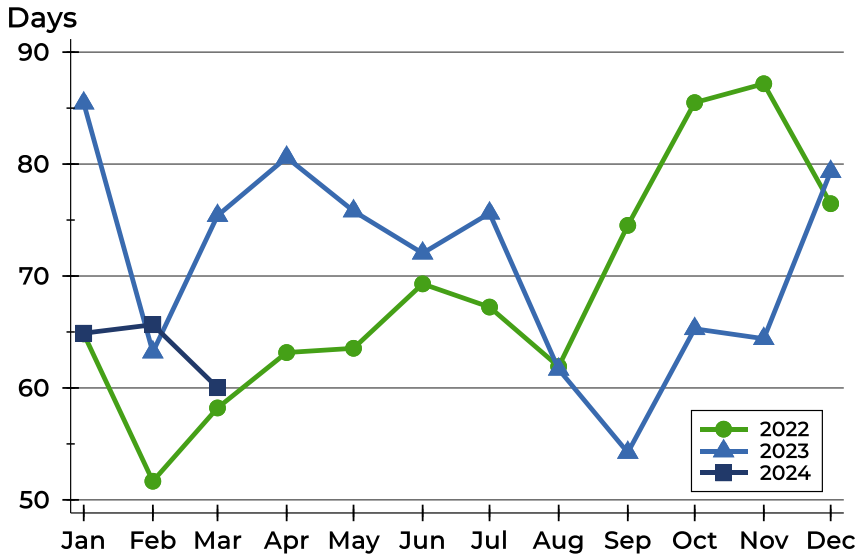


Month	2022	2023	2024
<b>January</b>	325,000	334,000	<b>346,200</b>
<b>February</b>	364,450	362,400	<b>334,000</b>
<b>March</b>	370,000	369,900	<b>359,900</b>
<b>April</b>	385,000	364,900	
<b>May</b>	380,000	362,500	
<b>June</b>	389,900	342,000	
<b>July</b>	340,000	375,000	
<b>August</b>	353,750	326,950	
<b>September</b>	349,000	344,750	
<b>October</b>	345,000	324,900	
<b>November</b>	345,000	328,000	
<b>December</b>	334,500	324,900	



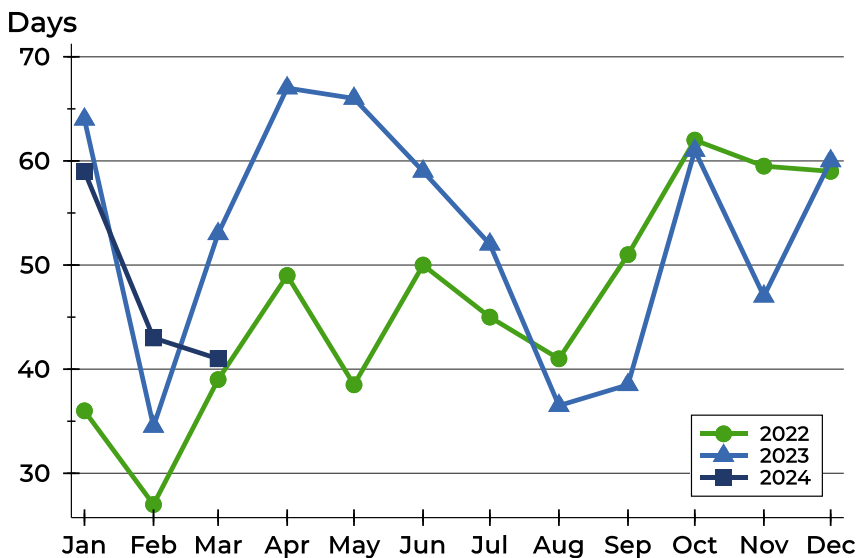
# Pottawatomie County Active Listings Analysis

## Average DOM



Month	2022	2023	2024
January	65	85	<b>65</b>
February	52	63	<b>66</b>
March	58	75	<b>60</b>
April	63	81	
May	64	76	
June	69	72	
July	67	76	
August	62	62	
September	75	54	
October	85	65	
November	87	64	
December	76	79	

## Median DOM

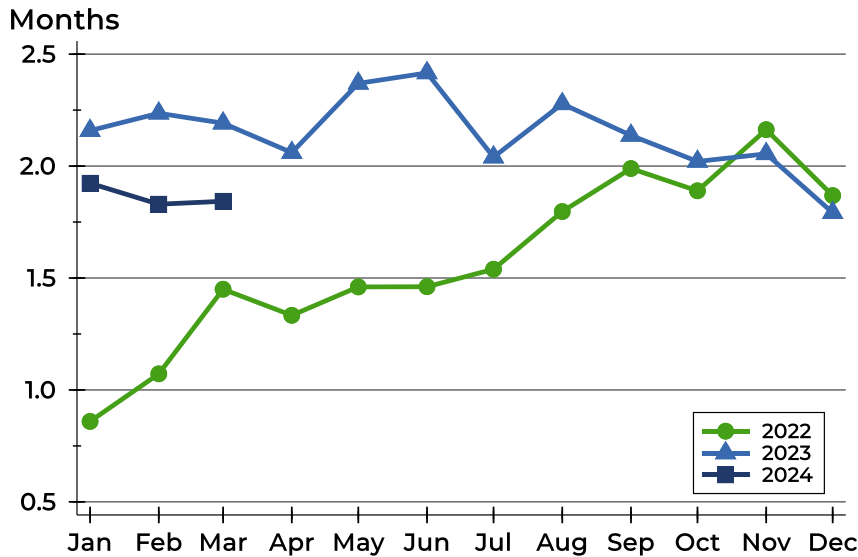


Month	2022	2023	2024
January	36	64	<b>59</b>
February	27	35	<b>43</b>
March	39	53	<b>41</b>
April	49	67	
May	39	66	
June	50	59	
July	45	52	
August	41	37	
September	51	39	
October	62	61	
November	60	47	
December	59	60	



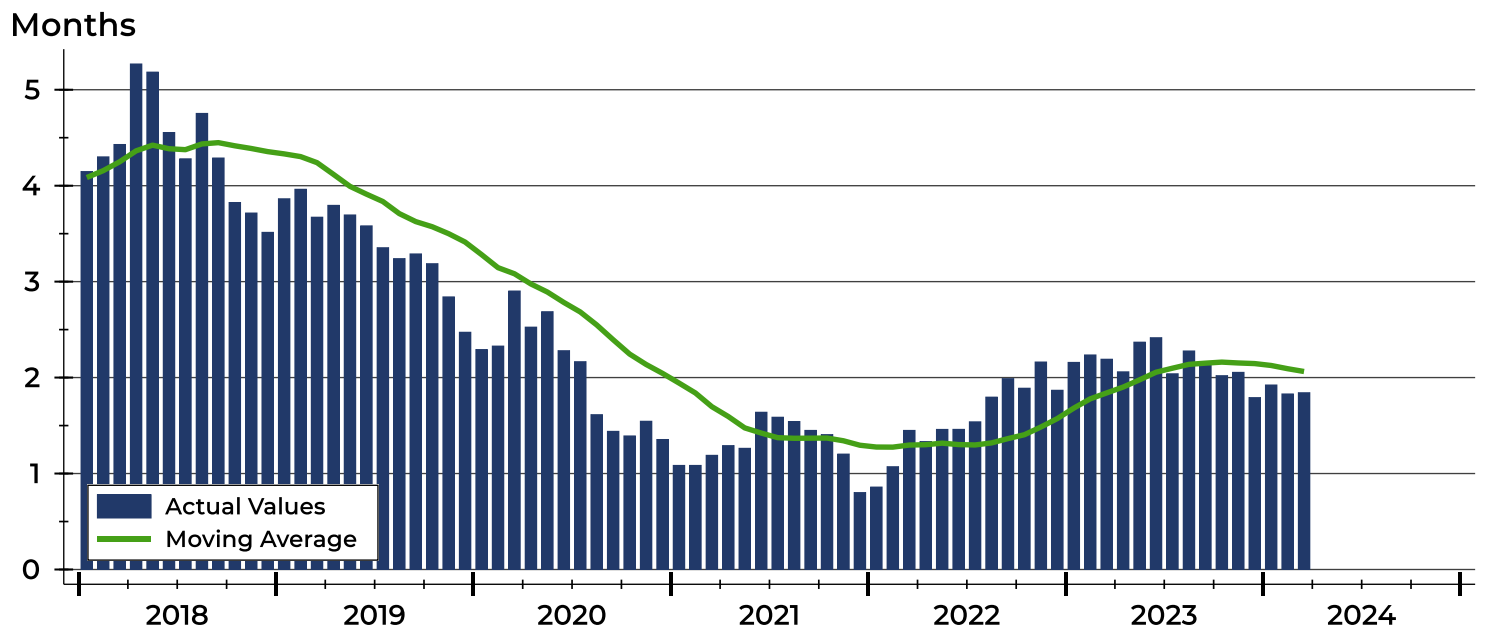
# Pottawatomie County Months' Supply Analysis

## Months' Supply by Month



Month	2022	2023	2024
January	0.9	2.2	<b>1.9</b>
February	1.1	2.2	<b>1.8</b>
March	1.4	2.2	<b>1.8</b>
April	1.3	2.1	
May	1.5	2.4	
June	1.5	2.4	
July	1.5	2.0	
August	1.8	2.3	
September	2.0	2.1	
October	1.9	2.0	
November	2.2	2.1	
December	1.9	1.8	

## History of Month's Supply





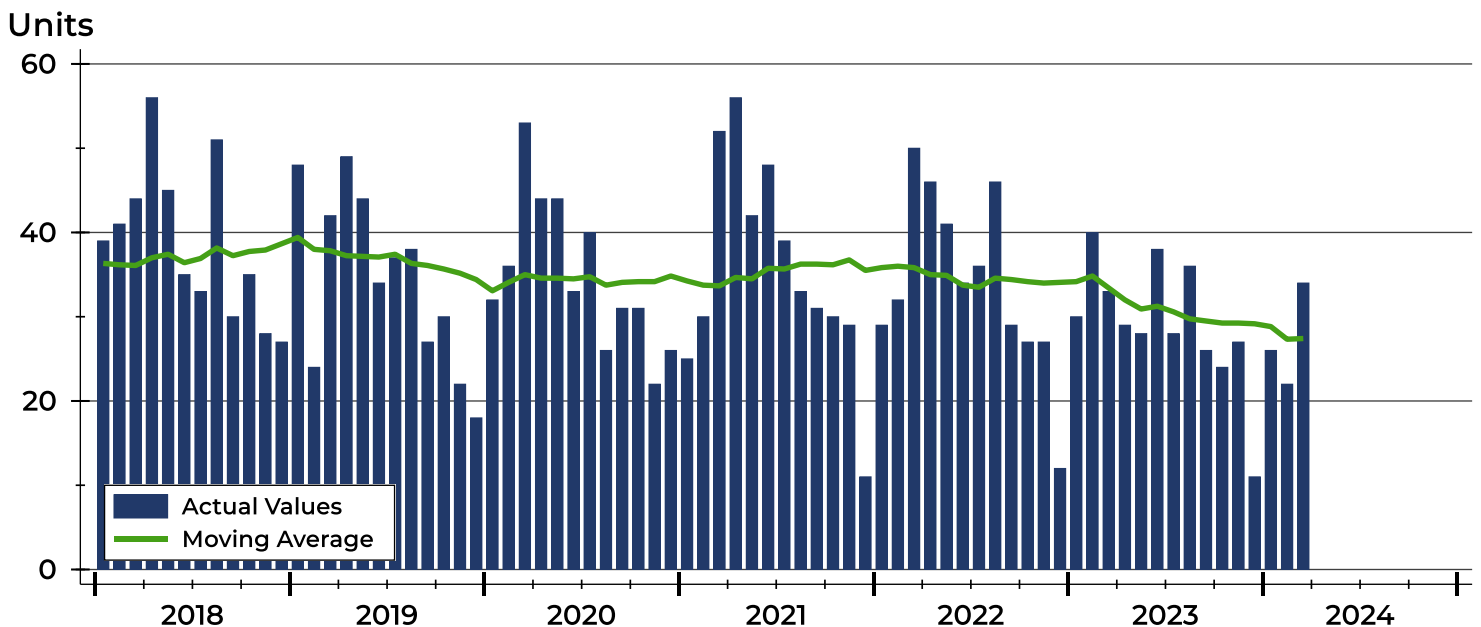
# Pottawatomie County New Listings Analysis

Summary Statistics for New Listings		2024	March 2023	Change
Current Month	New Listings	<b>34</b>	33	3.0%
	Volume (1,000s)	<b>12,381</b>	12,236	1.2%
	Average List Price	<b>364,150</b>	370,785	-1.8%
	Median List Price	<b>340,000</b>	342,500	-0.7%
Year-to-Date	New Listings	<b>82</b>	103	-20.4%
	Volume (1,000s)	<b>29,901</b>	37,981	-21.3%
	Average List Price	<b>364,644</b>	368,752	-1.1%
	Median List Price	<b>334,950</b>	344,000	-2.6%

A total of 34 new listings were added in Pottawatomie County during March, up 3.0% from the same month in 2023. Year-to-date Pottawatomie County has seen 82 new listings.

The median list price of these homes was \$340,000 down from \$342,500 in 2023.

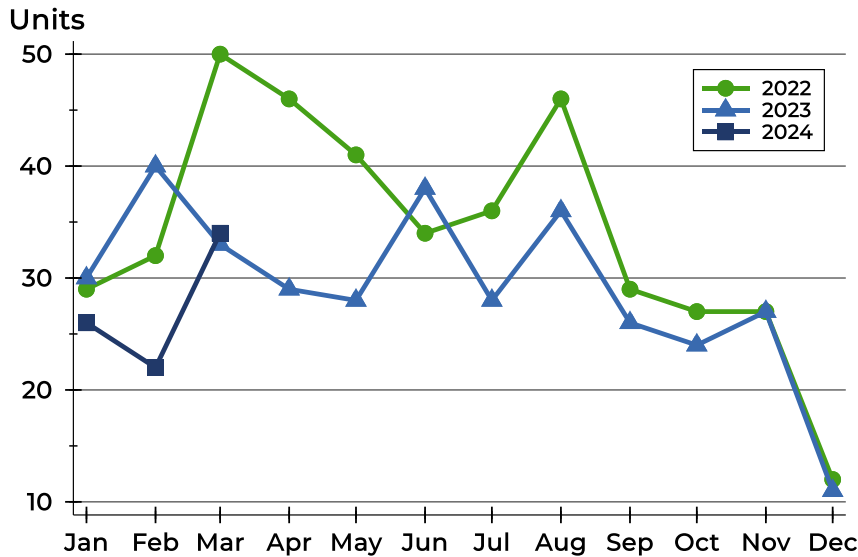
## History of New Listings





## Pottawatomie County New Listings Analysis

### New Listings by Month



Month	2022	2023	2024
January	29	30	<b>26</b>
February	32	40	<b>22</b>
March	50	33	<b>34</b>
April	46	29	
May	41	28	
June	34	38	
July	36	28	
August	46	36	
September	29	26	
October	27	24	
November	27	27	
December	12	11	

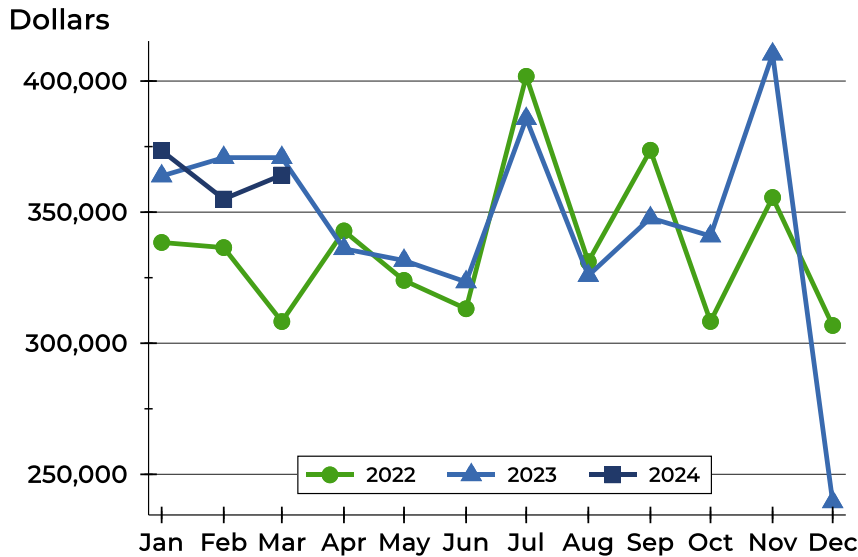
### New Listings by Price Range

Price Range	New Listings		List Price		Days on Market		Price as % of Orig.	
	Number	Percent	Average	Median	Avg.	Med.	Avg.	Med.
Below \$25,000	0	0.0%	N/A	N/A	N/A	N/A	N/A	N/A
\$25,000-\$49,999	0	0.0%	N/A	N/A	N/A	N/A	N/A	N/A
\$50,000-\$99,999	0	0.0%	N/A	N/A	N/A	N/A	N/A	N/A
\$100,000-\$124,999	0	0.0%	N/A	N/A	N/A	N/A	N/A	N/A
\$125,000-\$149,999	0	0.0%	N/A	N/A	N/A	N/A	N/A	N/A
\$150,000-\$174,999	0	0.0%	N/A	N/A	N/A	N/A	N/A	N/A
\$175,000-\$199,999	2	5.9%	187,450	187,450	7	7	100.0%	100.0%
\$200,000-\$249,999	2	5.9%	241,250	241,250	5	5	100.0%	100.0%
\$250,000-\$299,999	4	11.8%	269,000	270,500	11	9	99.2%	100.0%
\$300,000-\$399,999	17	50.0%	345,165	335,000	17	21	100.1%	100.0%
\$400,000-\$499,999	5	14.7%	426,400	415,000	23	25	99.0%	100.0%
\$500,000-\$749,999	4	11.8%	611,974	613,998	23	28	99.4%	100.0%
\$750,000-\$999,999	0	0.0%	N/A	N/A	N/A	N/A	N/A	N/A
\$1,000,000 and up	0	0.0%	N/A	N/A	N/A	N/A	N/A	N/A



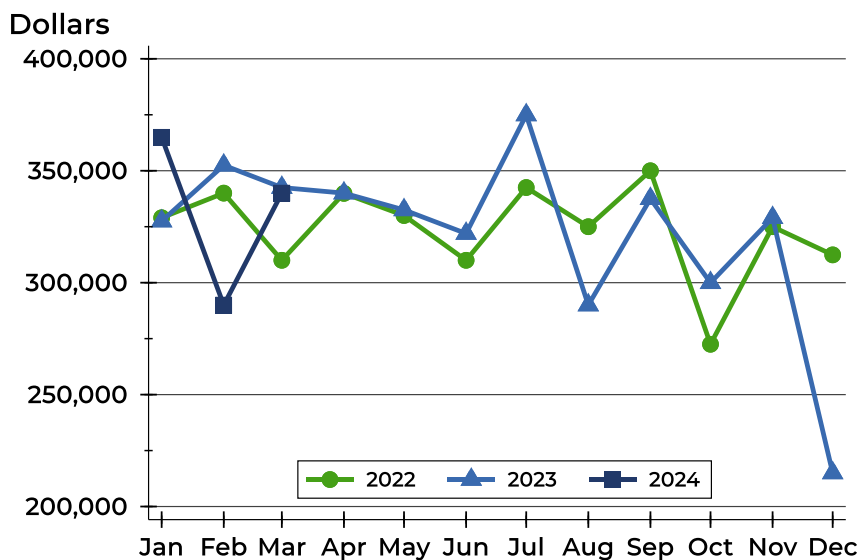
# Pottawatomie County New Listings Analysis

## Average Price



Month	2022	2023	2024
January	338,438	363,783	<b>373,454</b>
February	336,485	370,801	<b>354,995</b>
March	308,271	370,785	<b>364,150</b>
April	342,847	336,028	
May	323,966	331,554	
June	313,151	323,391	
July	401,797	385,643	
August	331,116	325,803	
September	373,607	347,785	
October	308,297	340,892	
November	355,596	410,263	
December	306,771	239,500	

## Median Price



Month	2022	2023	2024
January	329,000	327,500	<b>364,950</b>
February	340,000	352,450	<b>290,000</b>
March	310,000	342,500	<b>340,000</b>
April	339,900	340,000	
May	330,000	332,500	
June	310,000	321,950	
July	342,500	374,900	
August	325,000	290,000	
September	350,000	337,500	
October	272,500	299,950	
November	325,000	329,000	
December	312,425	215,000	



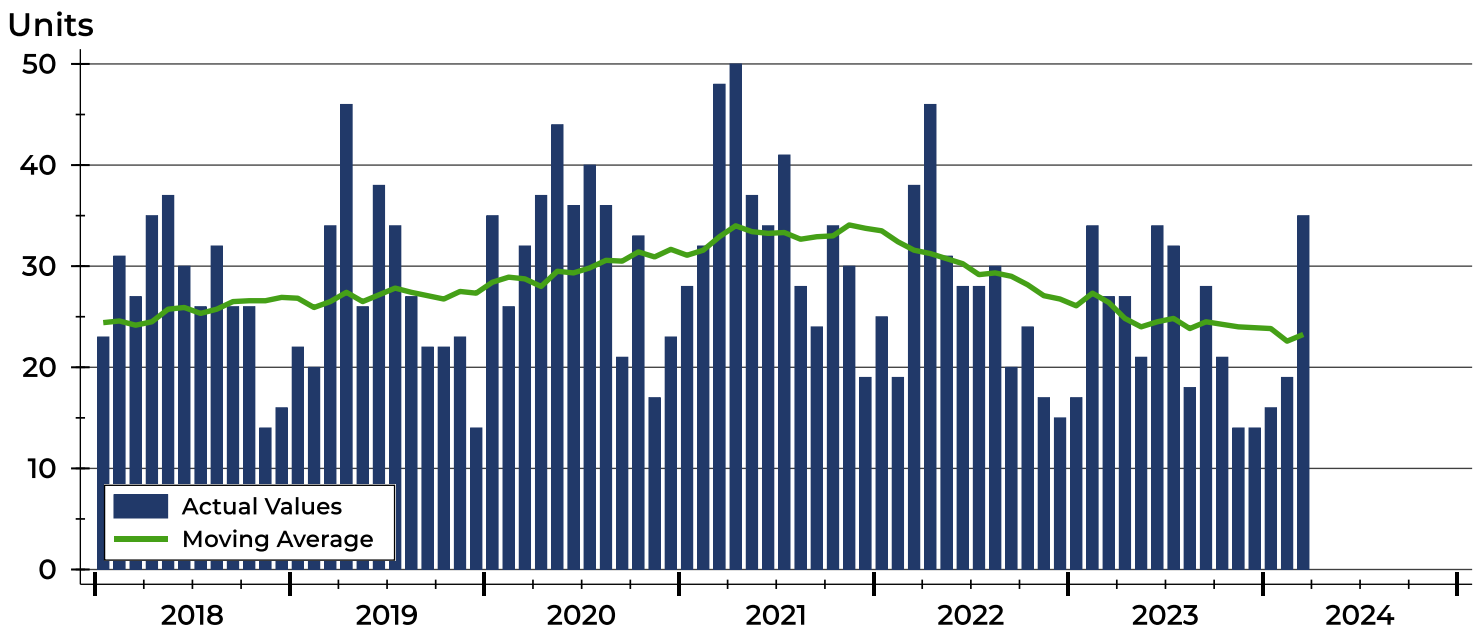
# Pottawatomie County Contracts Written Analysis

Summary Statistics for Contracts Written		2024	March 2023	Change	2024	Year-to-Date 2023	Change
Contracts Written		35	27	29.6%	70	78	-10.3%
Volume (1,000s)		11,005	8,207	34.1%	22,819	24,780	-7.9%
Average	Sale Price	314,437	303,959	3.4%	325,984	317,696	2.6%
	Days on Market	43	29	48.3%	54	46	17.4%
	Percent of Original	98.2%	99.3%	-1.1%	98.2%	98.9%	-0.7%
Median	Sale Price	275,000	324,500	-15.3%	302,500	327,250	-7.6%
	Days on Market	13	11	18.2%	27	16	68.8%
	Percent of Original	100.0%	100.0%	0.0%	100.0%	99.9%	0.1%

A total of 35 contracts for sale were written in Pottawatomie County during the month of March, up from 27 in 2023. The median list price of these homes was \$275,000, down from \$324,500 the prior year.

Half of the homes that went under contract in March were on the market less than 13 days, compared to 11 days in March 2023.

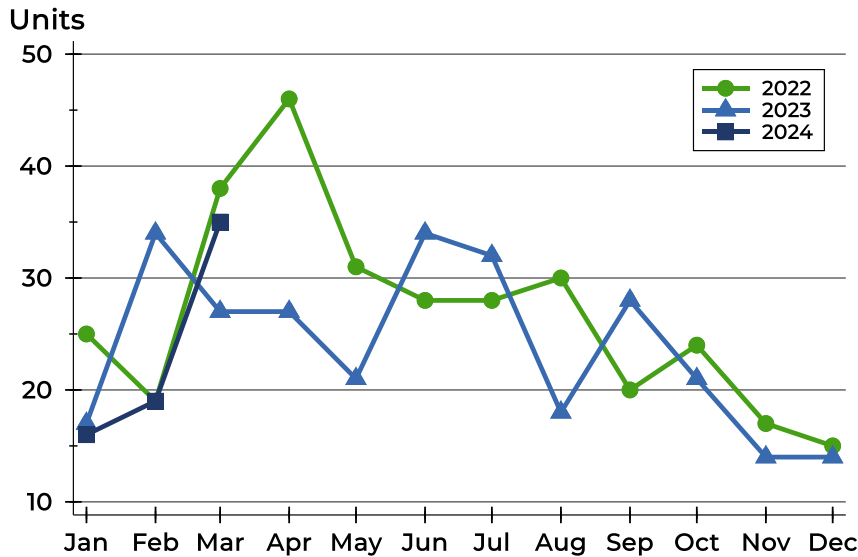
## History of Contracts Written





## Pottawatomie County Contracts Written Analysis

### Contracts Written by Month



Month	2022	2023	2024
January	25	17	16
February	19	34	19
March	38	27	35
April	46	27	
May	31	21	
June	28	34	
July	28	32	
August	30	18	
September	20	28	
October	24	21	
November	17	14	
December	15	14	

### Contracts Written by Price Range

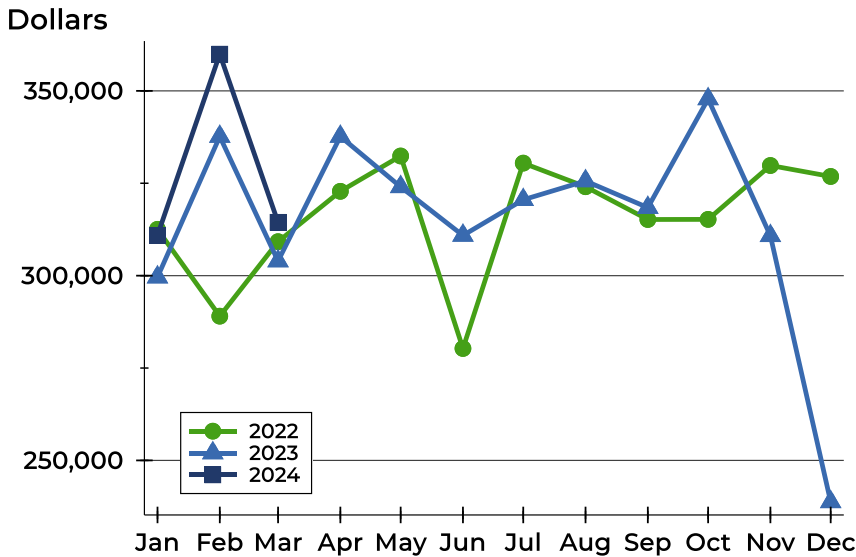
Price Range	Contracts Written		List Price		Days on Market		Price as % of Orig.	
	Number	Percent	Average	Median	Avg.	Med.	Avg.	Med.
Below \$25,000	0	0.0%	N/A	N/A	N/A	N/A	N/A	N/A
\$25,000-\$49,999	0	0.0%	N/A	N/A	N/A	N/A	N/A	N/A
\$50,000-\$99,999	0	0.0%	N/A	N/A	N/A	N/A	N/A	N/A
\$100,000-\$124,999	0	0.0%	N/A	N/A	N/A	N/A	N/A	N/A
\$125,000-\$149,999	2	5.7%	140,000	140,000	67	67	93.9%	93.9%
\$150,000-\$174,999	0	0.0%	N/A	N/A	N/A	N/A	N/A	N/A
\$175,000-\$199,999	3	8.6%	191,600	199,900	23	13	98.4%	100.0%
\$200,000-\$249,999	8	22.9%	225,250	222,750	82	53	96.9%	100.0%
\$250,000-\$299,999	5	14.3%	267,000	269,000	9	10	99.7%	100.0%
\$300,000-\$399,999	10	28.6%	361,960	375,000	20	8	99.9%	100.0%
\$400,000-\$499,999	6	17.1%	452,333	449,500	65	82	96.9%	99.0%
\$500,000-\$749,999	1	2.9%	679,900	679,900	3	3	100.0%	100.0%
\$750,000-\$999,999	0	0.0%	N/A	N/A	N/A	N/A	N/A	N/A
\$1,000,000 and up	0	0.0%	N/A	N/A	N/A	N/A	N/A	N/A





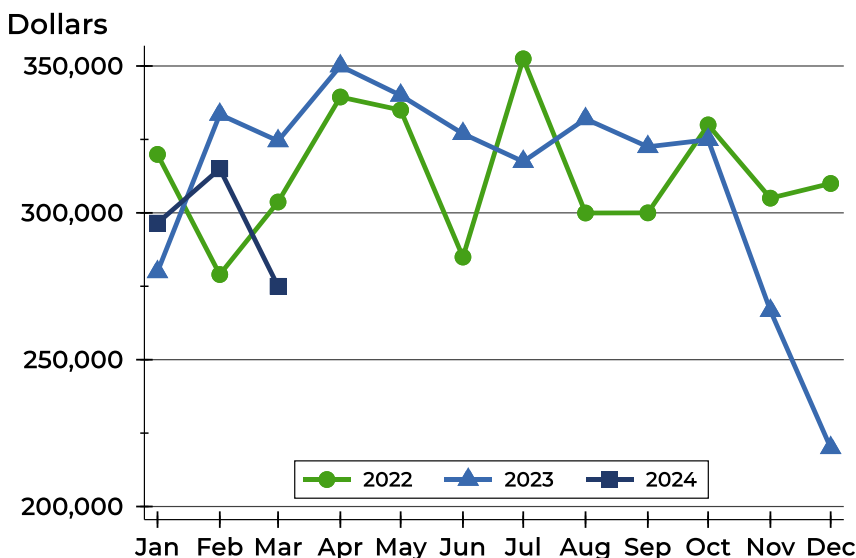
# Pottawatomie County Contracts Written Analysis

## Average Price



Month	2022	2023	2024
January	312,546	299,594	<b>310,919</b>
February	289,037	337,656	<b>359,942</b>
March	309,196	303,959	<b>314,437</b>
April	322,826	337,663	
May	332,385	324,033	
June	280,298	310,883	
July	330,457	320,544	
August	324,068	325,628	
September	315,205	318,421	
October	315,234	347,819	
November	329,815	310,786	
December	326,840	238,786	

## Median Price

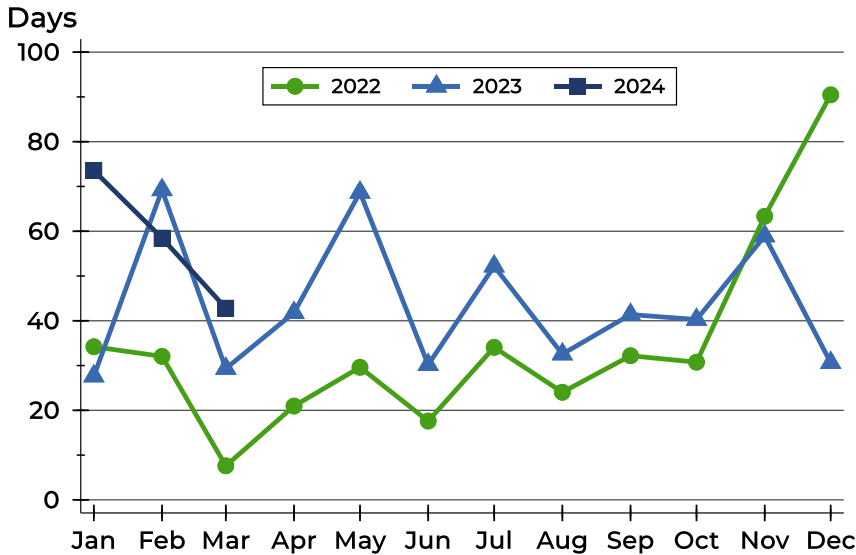


Month	2022	2023	2024
January	319,900	279,900	<b>296,500</b>
February	279,000	333,500	<b>315,000</b>
March	303,700	324,500	<b>275,000</b>
April	339,450	350,000	
May	335,000	340,000	
June	284,950	326,950	
July	352,450	317,450	
August	299,950	332,000	
September	300,000	322,500	
October	329,950	324,900	
November	305,000	266,703	
December	310,000	220,000	



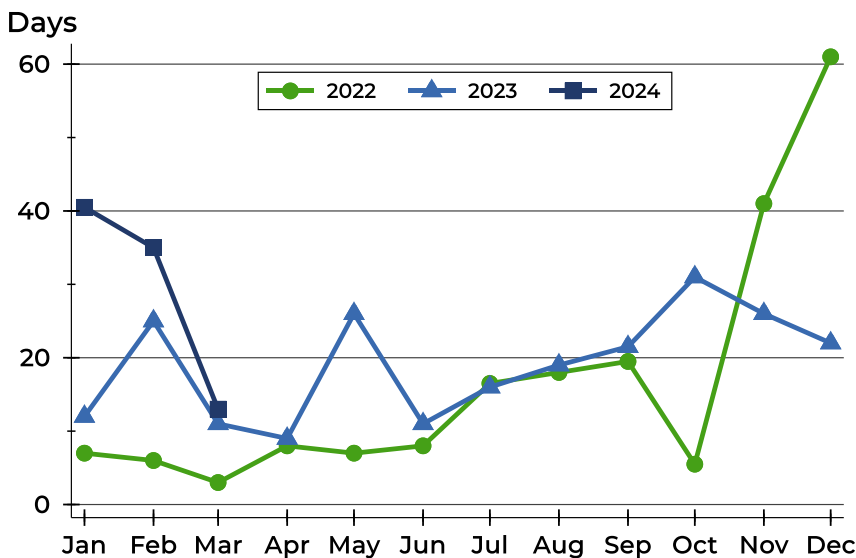
# Pottawatomie County Contracts Written Analysis

## Average DOM



Month	2022	2023	2024
January	34	28	<b>74</b>
February	32	69	<b>58</b>
March	8	29	<b>43</b>
April	21	42	
May	30	69	
June	18	30	
July	34	52	
August	24	33	
September	32	41	
October	31	40	
November	63	59	
December	90	31	

## Median DOM



Month	2022	2023	2024
January	7	12	<b>41</b>
February	6	25	<b>35</b>
March	3	11	<b>13</b>
April	8	9	
May	7	26	
June	8	11	
July	17	16	
August	18	19	
September	20	22	
October	6	31	
November	41	26	
December	61	22	



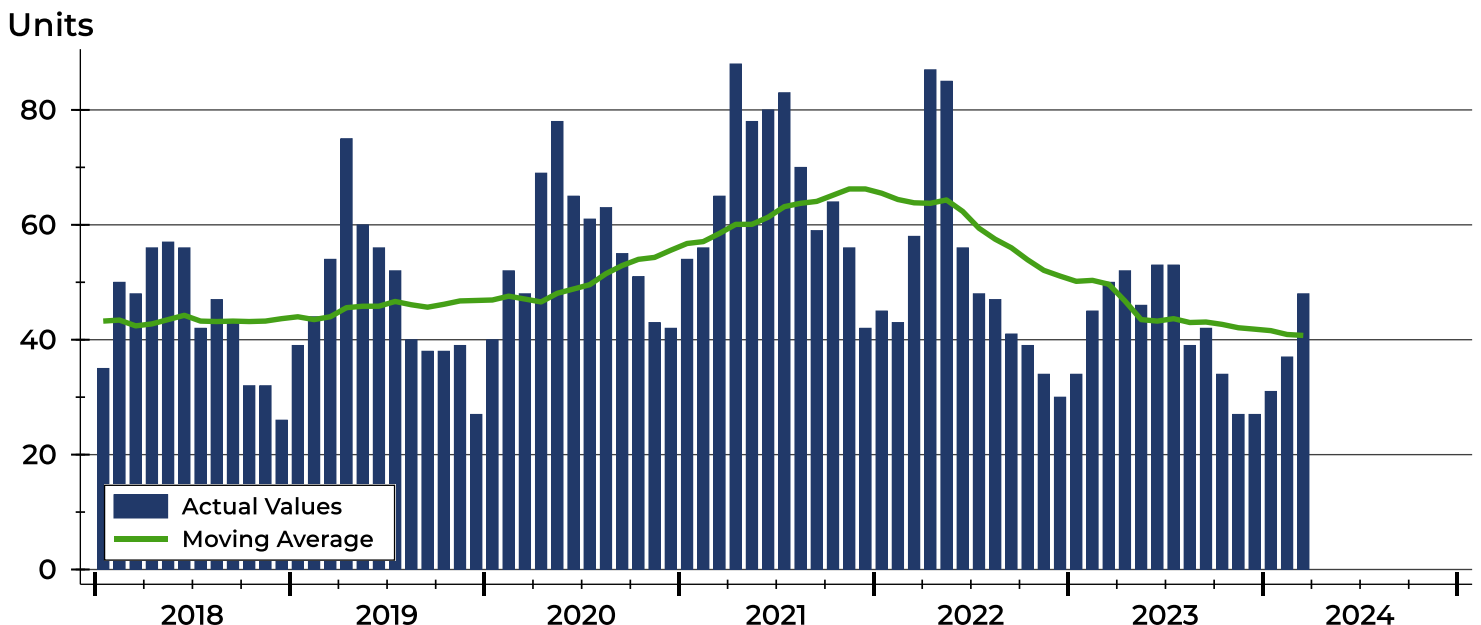
# Pottawatomie County Pending Contracts Analysis

Summary Statistics for Pending Contracts		2024	End of March 2023	Change
Pending Contracts		48	50	-4.0%
Volume (1,000s)		15,734	16,424	-4.2%
Average	List Price	327,794	328,472	-0.2%
	Days on Market	46	46	0.0%
	Percent of Original	99.4%	100.2%	-0.8%
Median	List Price	273,500	332,250	-17.7%
	Days on Market	20	15	33.3%
	Percent of Original	100.0%	100.0%	0.0%

A total of 48 listings in Pottawatomie County had contracts pending at the end of March, down from 50 contracts pending at the end of March 2023.

Pending contracts reflect listings with a contract in place at the end of the month. In contrast, contracts written measures the number of listings put under contract during the month.

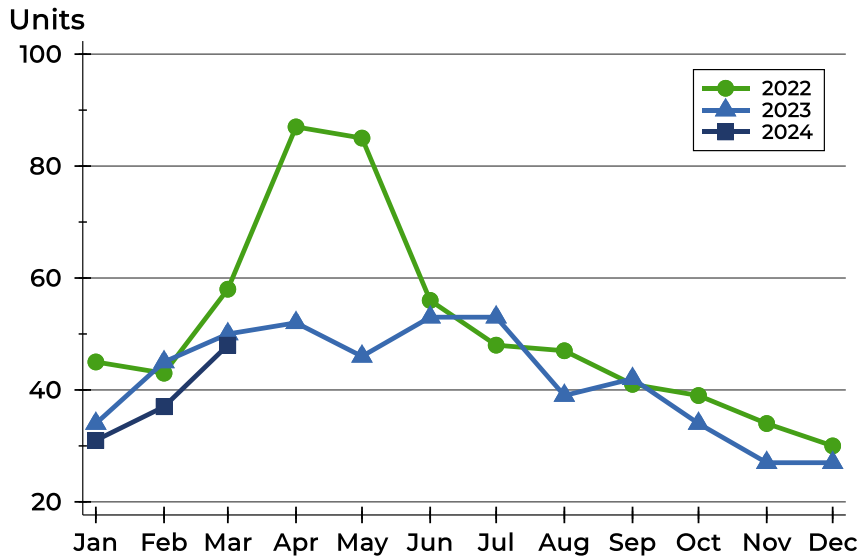
## History of Pending Contracts





## Pottawatomie County Pending Contracts Analysis

### Pending Contracts by Month



Month	2022	2023	2024
January	45	34	<b>31</b>
February	43	45	<b>37</b>
March	58	50	<b>48</b>
April	87	52	
May	85	46	
June	56	53	
July	48	53	
August	47	39	
September	41	42	
October	39	34	
November	34	27	
December	30	27	

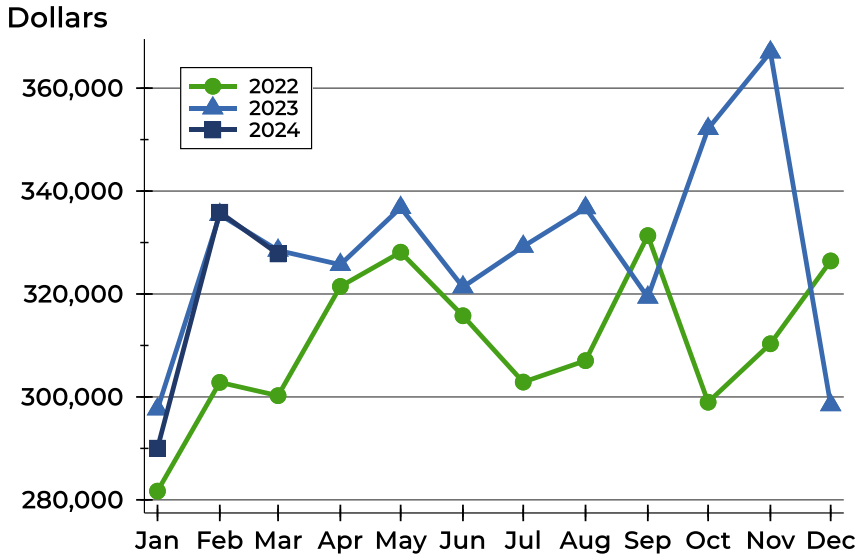
### Pending Contracts by Price Range

Price Range	Pending Contracts		List Price		Days on Market		Price as % of Orig.	
	Number	Percent	Average	Median	Avg.	Med.	Avg.	Med.
Below \$25,000	0	0.0%	N/A	N/A	N/A	N/A	N/A	N/A
\$25,000-\$49,999	0	0.0%	N/A	N/A	N/A	N/A	N/A	N/A
\$50,000-\$99,999	1	2.1%	85,000	85,000	13	13	100.0%	100.0%
\$100,000-\$124,999	1	2.1%	110,000	110,000	0	0	100.0%	100.0%
\$125,000-\$149,999	1	2.1%	145,000	145,000	105	105	87.9%	87.9%
\$150,000-\$174,999	0	0.0%	N/A	N/A	N/A	N/A	N/A	N/A
\$175,000-\$199,999	3	6.3%	199,600	199,900	34	35	98.4%	100.0%
\$200,000-\$249,999	13	27.1%	231,715	237,500	52	40	98.9%	100.0%
\$250,000-\$299,999	6	12.5%	265,833	269,000	15	12	105.0%	100.0%
\$300,000-\$399,999	12	25.0%	357,508	358,750	36	8	99.6%	100.0%
\$400,000-\$499,999	7	14.6%	451,857	449,000	70	99	97.3%	100.0%
\$500,000-\$749,999	4	8.3%	683,725	689,950	76	80	99.2%	100.0%
\$750,000-\$999,999	0	0.0%	N/A	N/A	N/A	N/A	N/A	N/A
\$1,000,000 and up	0	0.0%	N/A	N/A	N/A	N/A	N/A	N/A



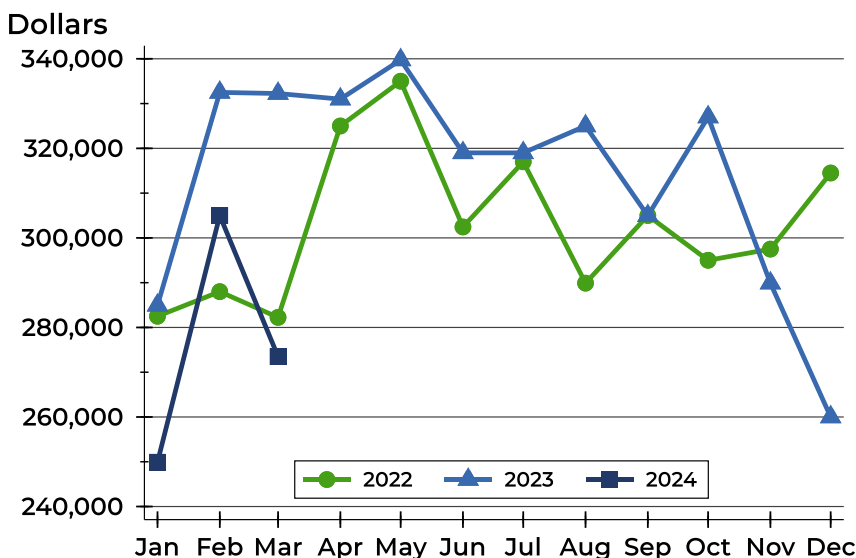
# Pottawatomie County Pending Contracts Analysis

## Average Price



Month	2022	2023	2024
January	281,700	297,634	<b>290,045</b>
February	302,832	335,418	<b>335,886</b>
March	300,248	328,472	<b>327,794</b>
April	321,471	325,708	
May	328,125	336,778	
June	315,771	321,353	
July	302,886	329,236	
August	307,048	336,728	
September	331,346	319,350	
October	298,977	352,121	
November	310,334	366,993	
December	326,423	298,444	

## Median Price

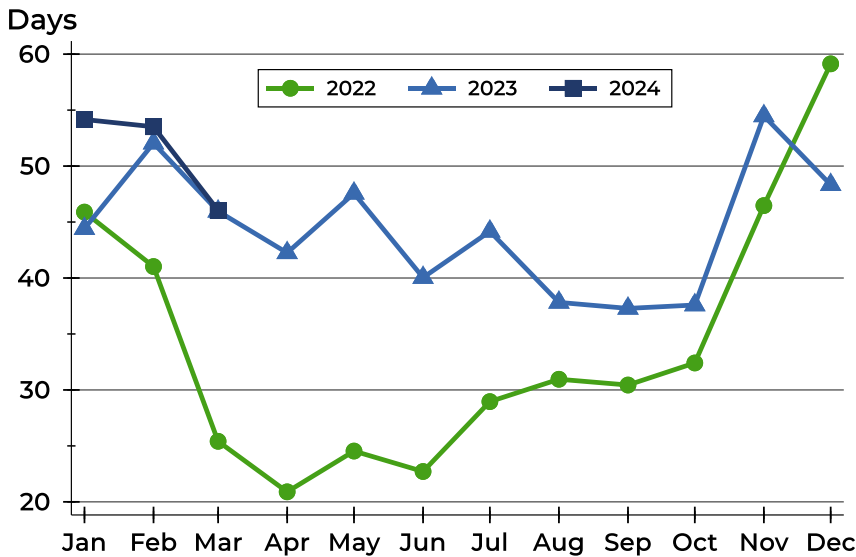


Month	2022	2023	2024
January	282,500	284,950	<b>249,900</b>
February	288,000	332,500	<b>305,000</b>
March	282,250	332,250	<b>273,500</b>
April	325,000	331,000	
May	335,000	339,750	
June	302,450	319,000	
July	317,000	319,000	
August	289,900	325,000	
September	305,000	304,950	
October	295,000	327,000	
November	297,500	289,900	
December	314,500	260,000	



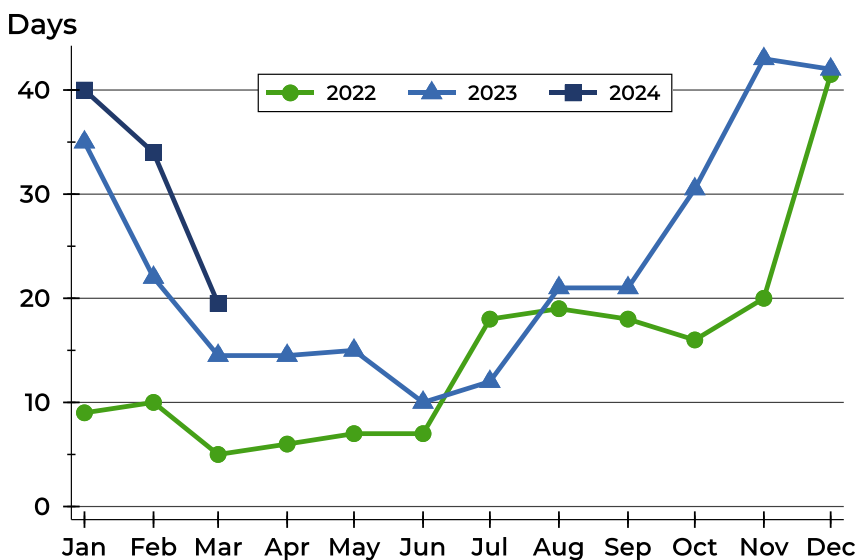
# Pottawatomie County Pending Contracts Analysis

## Average DOM



Month	2022	2023	2024
January	46	44	54
February	41	52	54
March	25	46	46
April	21	42	
May	25	48	
June	23	40	
July	29	44	
August	31	38	
September	30	37	
October	32	38	
November	46	54	
December	59	48	

## Median DOM



Month	2022	2023	2024
January	9	35	40
February	10	22	34
March	5	15	20
April	6	15	
May	7	15	
June	7	10	
July	18	12	
August	19	21	
September	18	21	
October	16	31	
November	20	43	
December	42	42	