



**July  
2024**

# Flint Hills MLS Statistics



**FLINT HILLS  
ASSOCIATION  
OF REALTORS®**

## Pottawatomie County Housing Report



### Market Overview

#### Pottawatomie County Home Sales Fell in July

Total home sales in Pottawatomie County fell last month to 25 units, compared to 33 units in July 2023. Total sales volume was \$8.6 million, down from a year earlier.

The median sale price in July was \$322,000, up from \$315,626 a year earlier. Homes that sold in July were typically on the market for 32 days and sold for 100.0% of their list prices.

#### Pottawatomie County Active Listings Up at End of July

The total number of active listings in Pottawatomie County at the end of July was 57 units, up from 51 at the same point in 2023. This represents a 2.5 months' supply of homes available for sale. The median list price of homes on the market at the end of July was \$334,950.

During July, a total of 29 contracts were written down from 32 in July 2023. At the end of the month, there were 44 contracts still pending.

### Report Contents

- Summary Statistics – Page 2
- Closed Listing Analysis – Page 3
- Active Listings Analysis – Page 7
- Months' Supply Analysis – Page 11
- New Listings Analysis – Page 12
- Contracts Written Analysis – Page 15
- Pending Contracts Analysis – Page 19

### Contact Information

Margaret Pendleton, Association Executive  
 Flint Hills Association of REALTORS®  
 205 S. Seth Child Road  
 Manhattan, KS 66502  
 785-776-1203  
[ae@flinthillsrealtors.net](mailto:ae@flinthillsrealtors.net)  
[www.flinthillsrealtors.net](http://www.flinthillsrealtors.net)



**July  
2024**

# Flint Hills MLS Statistics



**FLINT HILLS  
ASSOCIATION  
OF REALTORS®**

## Pottawatomie County Summary Statistics

July MLS Statistics Three-year History		Current Month			Year-to-Date		
		2024	2023	2022	2024	2023	2022
<b>Home Sales</b>		<b>25</b>	<b>33</b>	<b>31</b>	<b>162</b>	<b>173</b>	<b>207</b>
Change from prior year		-24.2%	6.5%	-11.4%	-6.4%	-16.4%	-9.6%
<b>Active Listings</b>		<b>57</b>	<b>51</b>	<b>49</b>	<b>N/A</b>	<b>N/A</b>	<b>N/A</b>
Change from prior year		11.8%	4.1%	-2.0%			
<b>Months' Supply</b>		<b>2.5</b>	<b>2.0</b>	<b>1.5</b>	<b>N/A</b>	<b>N/A</b>	<b>N/A</b>
Change from prior year		25.0%	33.3%	-6.3%			
<b>New Listings</b>		<b>33</b>	<b>28</b>	<b>36</b>	<b>234</b>	<b>226</b>	<b>268</b>
Change from prior year		17.9%	-22.2%	-7.7%	3.5%	-15.7%	-8.2%
<b>Contracts Written</b>		<b>29</b>	<b>32</b>	<b>28</b>	<b>180</b>	<b>192</b>	<b>215</b>
Change from prior year		-9.4%	14.3%	-31.7%	-6.3%	-10.7%	-20.4%
<b>Pending Contracts</b>		<b>44</b>	<b>53</b>	<b>48</b>	<b>N/A</b>	<b>N/A</b>	<b>N/A</b>
Change from prior year		-17.0%	10.4%	-42.2%			
<b>Sales Volume (1,000s)</b>		<b>8,639</b>	<b>9,933</b>	<b>10,678</b>	<b>53,241</b>	<b>55,749</b>	<b>64,359</b>
Change from prior year		-13.0%	-7.0%	12.2%	-4.5%	-13.4%	4.6%
Average	<b>Sale Price</b>	<b>345,548</b>	<b>301,005</b>	<b>344,468</b>	<b>328,649</b>	<b>322,248</b>	<b>310,912</b>
	Change from prior year	14.8%	-12.6%	26.7%	2.0%	3.6%	15.8%
	<b>List Price of Actives</b>	<b>356,743</b>	<b>425,723</b>	<b>391,716</b>	<b>N/A</b>	<b>N/A</b>	<b>N/A</b>
	Change from prior year	-16.2%	8.7%	35.3%			
	<b>Days on Market</b>	<b>40</b>	<b>28</b>	<b>28</b>	<b>43</b>	<b>48</b>	<b>25</b>
Change from prior year	42.9%	0.0%	180.0%	-10.4%	92.0%	-21.9%	
<b>Percent of List</b>	<b>99.5%</b>	<b>99.2%</b>	<b>100.9%</b>	<b>99.0%</b>	<b>99.5%</b>	<b>100.9%</b>	
Change from prior year	0.3%	-1.7%	-0.4%	-0.5%	-1.4%	0.9%	
<b>Percent of Original</b>	<b>97.8%</b>	<b>98.5%</b>	<b>100.3%</b>	<b>97.6%</b>	<b>98.0%</b>	<b>100.4%</b>	
Change from prior year	-0.7%	-1.8%	-1.0%	-0.4%	-2.4%	1.2%	
Median	<b>Sale Price</b>	<b>322,000</b>	<b>315,626</b>	<b>333,000</b>	<b>316,000</b>	<b>325,000</b>	<b>315,000</b>
	Change from prior year	2.0%	-5.2%	30.6%	-2.8%	3.2%	17.5%
	<b>List Price of Actives</b>	<b>334,950</b>	<b>375,000</b>	<b>340,000</b>	<b>N/A</b>	<b>N/A</b>	<b>N/A</b>
	Change from prior year	-10.7%	10.3%	17.3%			
	<b>Days on Market</b>	<b>32</b>	<b>9</b>	<b>7</b>	<b>19</b>	<b>15</b>	<b>6</b>
Change from prior year	255.6%	28.6%	133.3%	26.7%	150.0%	-25.0%	
<b>Percent of List</b>	<b>100.0%</b>	<b>99.8%</b>	<b>100.0%</b>	<b>100.0%</b>	<b>100.0%</b>	<b>100.0%</b>	
Change from prior year	0.2%	-0.2%	0.0%	0.0%	0.0%	0.0%	
<b>Percent of Original</b>	<b>97.8%</b>	<b>98.2%</b>	<b>100.0%</b>	<b>98.7%</b>	<b>99.8%</b>	<b>100.0%</b>	
Change from prior year	-0.4%	-1.8%	0.0%	-1.1%	-0.2%	0.0%	

Note: Year-to-date statistics cannot be calculated for Active Listings, Months' Supply and Pending Contracts.



# Pottawatomie County Closed Listings Analysis

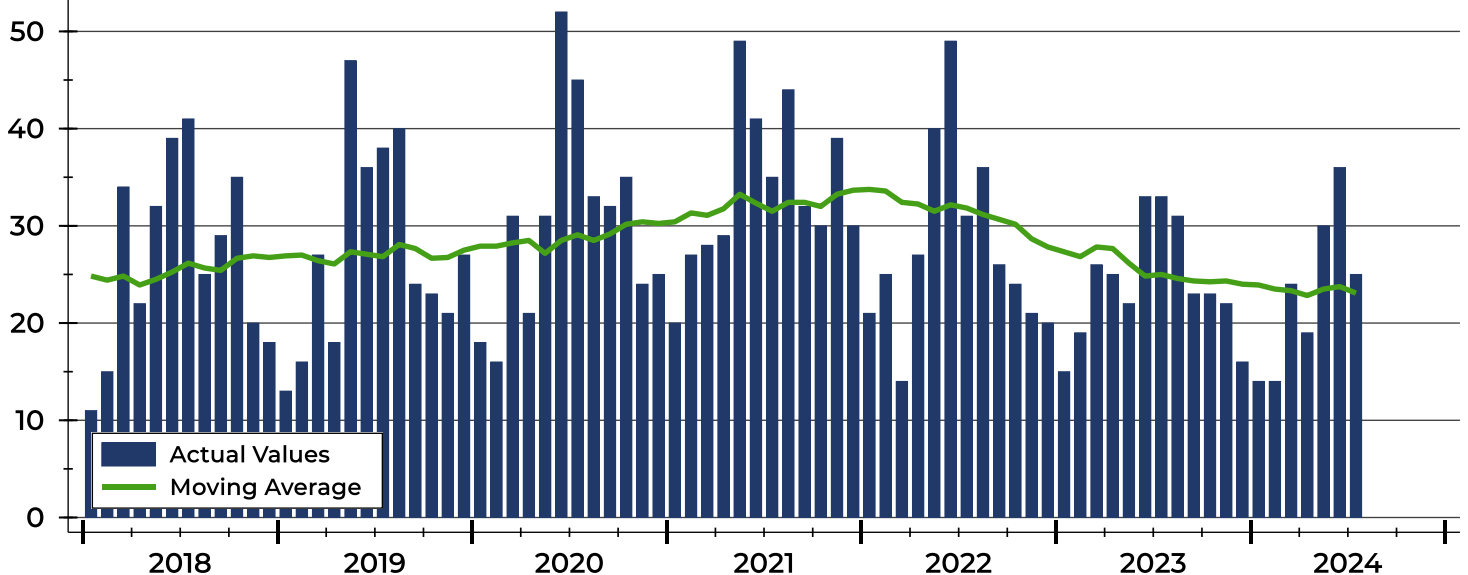
Summary Statistics for Closed Listings		2024	July 2023	Change	2024	Year-to-Date 2023	Change
Closed Listings		25	33	-24.2%	162	173	-6.4%
Volume (1,000s)		8,639	9,933	-13.0%	53,241	55,749	-4.5%
Months' Supply		2.5	2.0	25.0%	N/A	N/A	N/A
Average	Sale Price	345,548	301,005	14.8%	328,649	322,248	2.0%
	Days on Market	40	28	42.9%	43	48	-10.4%
	Percent of List	99.5%	99.2%	0.3%	99.0%	99.5%	-0.5%
	Percent of Original	97.8%	98.5%	-0.7%	97.6%	98.0%	-0.4%
Median	Sale Price	322,000	315,626	2.0%	316,000	325,000	-2.8%
	Days on Market	32	9	255.6%	19	15	26.7%
	Percent of List	100.0%	99.8%	0.2%	100.0%	100.0%	0.0%
	Percent of Original	97.8%	98.2%	-0.4%	98.7%	99.8%	-1.1%

A total of 25 homes sold in Pottawatomie County in July, down from 33 units in July 2023. Total sales volume fell to \$8.6 million compared to \$9.9 million in the previous year.

The median sales price in July was \$322,000, up 2.0% compared to the prior year. Median days on market was 32 days, up from 14 days in June, and up from 9 in July 2023.

## History of Closed Listings

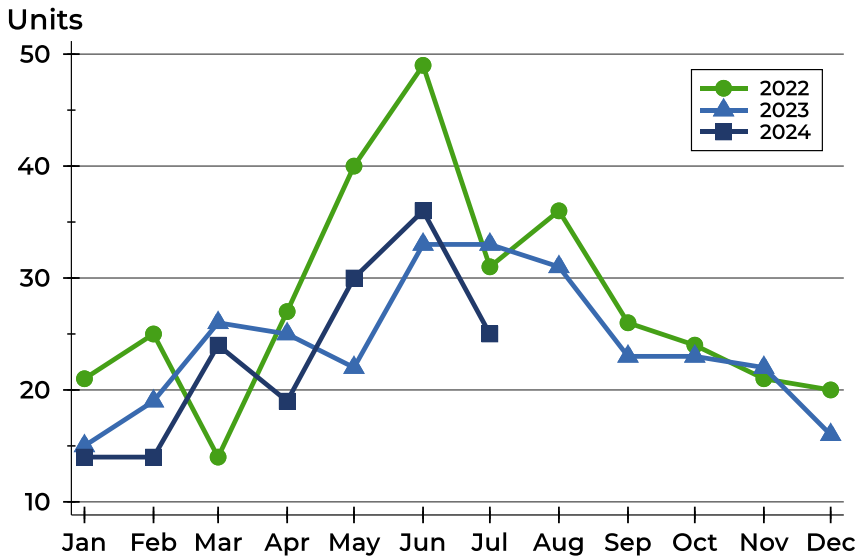
Units





# Pottawatomie County Closed Listings Analysis

## Closed Listings by Month



Month	2022	2023	2024
January	21	15	14
February	25	19	14
March	14	26	24
April	27	25	19
May	40	22	30
June	49	33	36
July	31	33	25
August	36	31	31
September	26	23	23
October	24	23	21
November	21	22	20
December	20	16	20

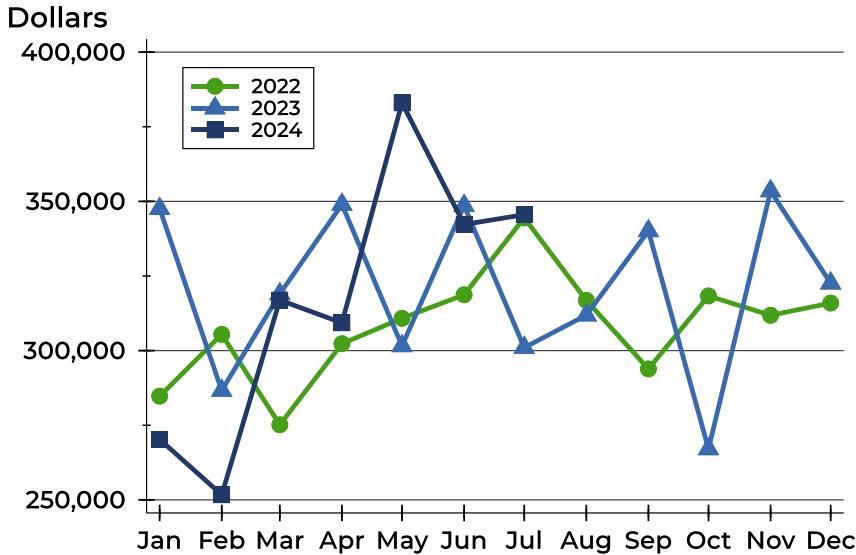
## Closed Listings by Price Range

Price Range	Sales		Months' Supply	Sale Price		Days on Market		Price as % of List		Price as % of Orig.	
	Number	Percent		Average	Median	Avg.	Med.	Avg.	Med.	Avg.	Med.
Below \$25,000	0	0.0%	N/A	N/A	N/A	N/A	N/A	N/A	N/A	N/A	N/A
\$25,000-\$49,999	0	0.0%	N/A	N/A	N/A	N/A	N/A	N/A	N/A	N/A	N/A
\$50,000-\$99,999	0	0.0%	N/A	N/A	N/A	N/A	N/A	N/A	N/A	N/A	N/A
\$100,000-\$124,999	1	4.0%	2.0	120,000	120,000	54	54	96.0%	96.0%	96.0%	96.0%
\$125,000-\$149,999	0	0.0%	N/A	N/A	N/A	N/A	N/A	N/A	N/A	N/A	N/A
\$150,000-\$174,999	1	4.0%	2.7	157,500	157,500	103	103	100.0%	100.0%	95.5%	95.5%
\$175,000-\$199,999	1	4.0%	0.0	187,000	187,000	38	38	91.2%	91.2%	91.2%	91.2%
\$200,000-\$249,999	2	8.0%	0.7	230,500	230,500	33	33	102.6%	102.6%	100.5%	100.5%
\$250,000-\$299,999	2	8.0%	3.4	257,250	257,250	5	5	102.0%	102.0%	102.0%	102.0%
\$300,000-\$399,999	10	40.0%	3.4	327,250	321,500	42	20	99.5%	99.3%	98.5%	98.9%
\$400,000-\$499,999	5	20.0%	2.9	433,800	425,000	62	56	98.7%	100.0%	94.3%	95.1%
\$500,000-\$749,999	3	12.0%	1.4	585,733	526,000	4	2	100.5%	99.8%	100.5%	99.8%
\$750,000-\$999,999	0	0.0%	N/A	N/A	N/A	N/A	N/A	N/A	N/A	N/A	N/A
\$1,000,000 and up	0	0.0%	N/A	N/A	N/A	N/A	N/A	N/A	N/A	N/A	N/A



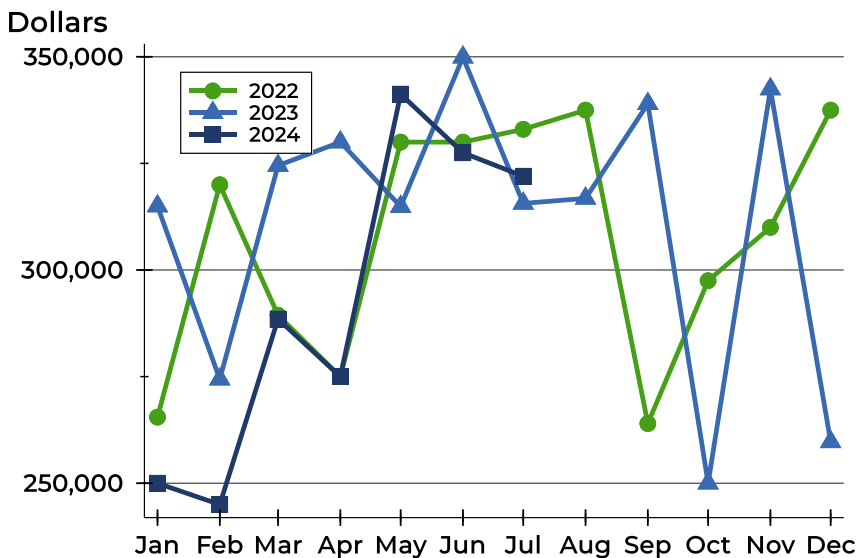
# Pottawatomie County Closed Listings Analysis

## Average Price



Month	2022	2023	2024
January	284,752	347,548	<b>270,281</b>
February	305,443	286,647	<b>251,689</b>
March	275,167	319,004	<b>316,938</b>
April	302,308	348,976	<b>309,311</b>
May	310,831	301,576	<b>383,004</b>
June	318,706	348,576	<b>342,261</b>
July	344,468	301,005	<b>345,548</b>
August	316,847	311,874	
September	293,881	340,115	
October	318,325	267,050	
November	311,843	353,491	
December	315,935	322,588	

## Median Price

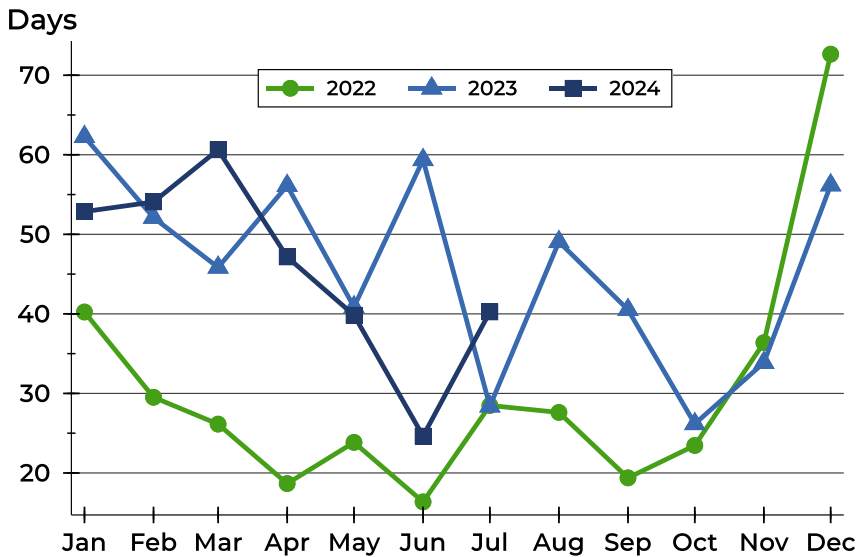


Month	2022	2023	2024
January	265,500	315,000	<b>250,000</b>
February	320,000	274,400	<b>245,000</b>
March	289,400	324,500	<b>288,500</b>
April	275,000	330,000	<b>275,000</b>
May	330,000	314,875	<b>341,250</b>
June	330,000	349,900	<b>327,500</b>
July	333,000	315,626	<b>322,000</b>
August	337,500	316,806	
September	264,000	339,000	
October	297,500	250,000	
November	310,000	342,450	
December	337,500	259,703	



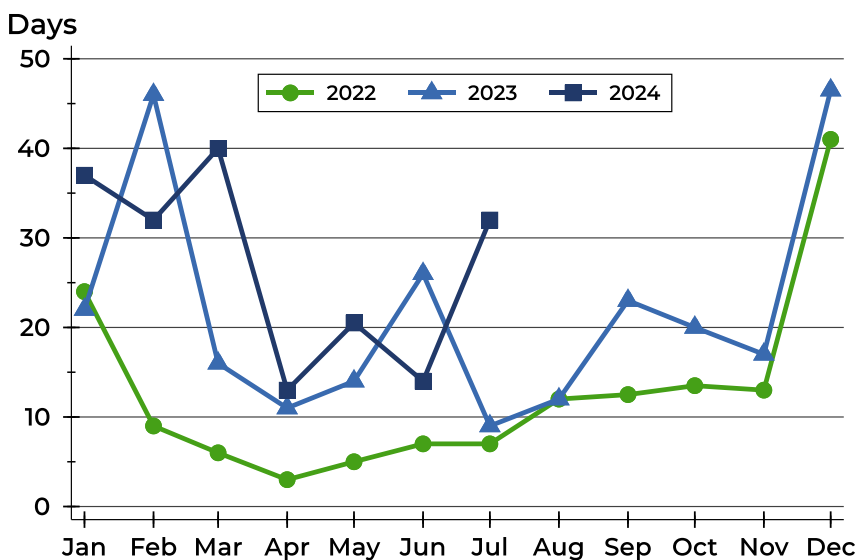
# Pottawatomie County Closed Listings Analysis

## Average DOM



Month	2022	2023	2024
January	40	62	<b>53</b>
February	30	52	<b>54</b>
March	26	46	<b>61</b>
April	19	56	<b>47</b>
May	24	41	<b>40</b>
June	16	59	<b>25</b>
July	28	28	<b>40</b>
August	28	49	
September	19	41	
October	23	26	
November	36	34	
December	73	56	

## Median DOM



Month	2022	2023	2024
January	24	22	<b>37</b>
February	9	46	<b>32</b>
March	6	16	<b>40</b>
April	3	11	<b>13</b>
May	5	14	<b>21</b>
June	7	26	<b>14</b>
July	7	9	<b>32</b>
August	12	12	
September	13	23	
October	14	20	
November	13	17	
December	41	47	



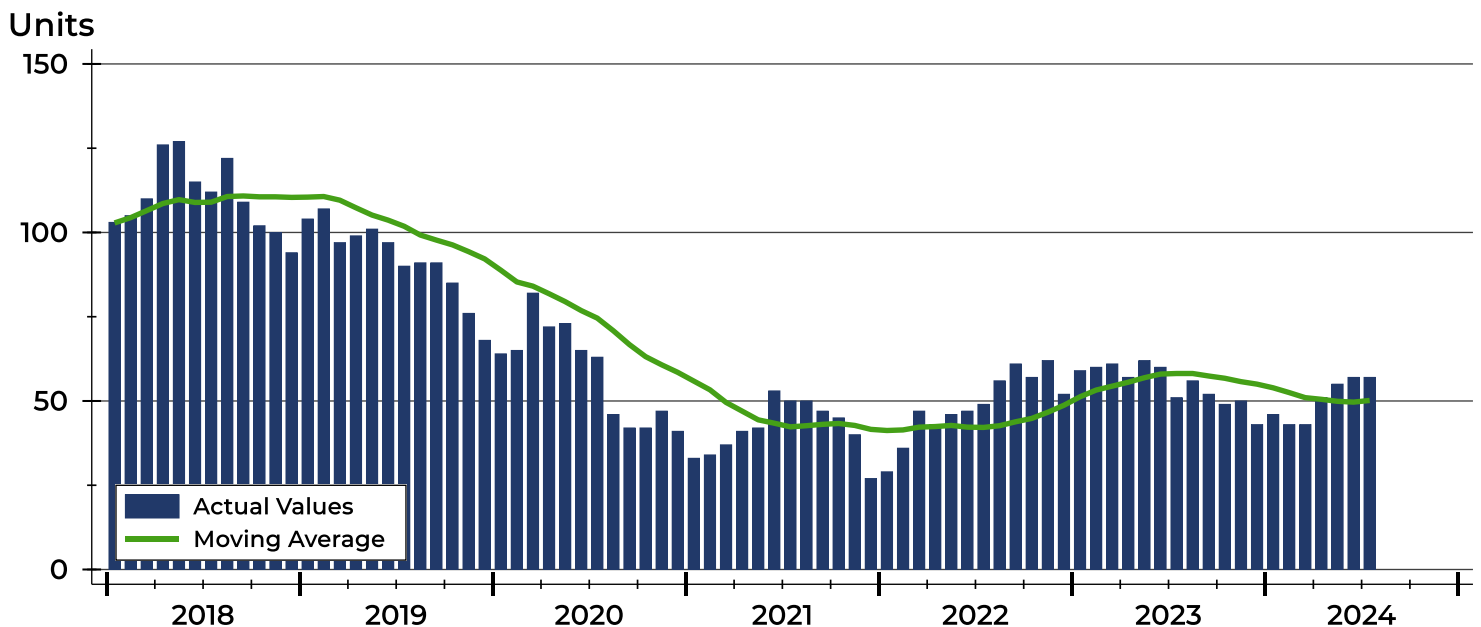
# Pottawatomie County Active Listings Analysis

Summary Statistics for Active Listings		2024	End of July 2023	Change
Active Listings		57	51	11.8%
Volume (1,000s)		20,334	21,712	-6.3%
Months' Supply		2.5	2.0	25.0%
Average	List Price	356,743	425,723	-16.2%
	Days on Market	60	76	-21.1%
	Percent of Original	98.6%	98.3%	0.3%
Median	List Price	334,950	375,000	-10.7%
	Days on Market	38	52	-26.9%
	Percent of Original	100.0%	100.0%	0.0%

A total of 57 homes were available for sale in Pottawatomie County at the end of July. This represents a 2.5 months' supply of active listings.

The median list price of homes on the market at the end of July was \$334,950, down 10.7% from 2023. The typical time on market for active listings was 38 days, down from 52 days a year earlier.

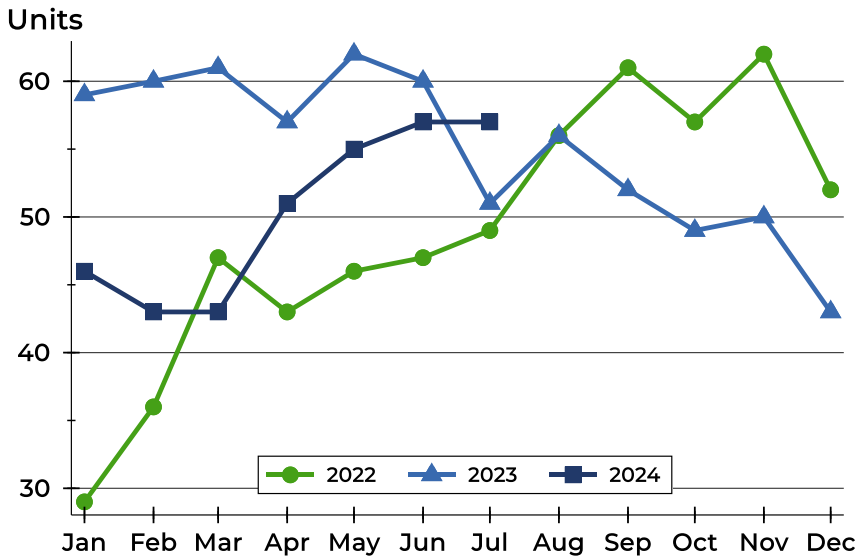
## History of Active Listings





## Pottawatomie County Active Listings Analysis

### Active Listings by Month



Month	2022	2023	2024
January	29	59	<b>46</b>
February	36	60	<b>43</b>
March	47	61	<b>43</b>
April	43	57	<b>51</b>
May	46	62	<b>55</b>
June	47	60	<b>57</b>
July	49	51	<b>57</b>
August	56	56	56
September	61	52	52
October	57	49	49
November	62	50	50
December	52	43	43

### Active Listings by Price Range

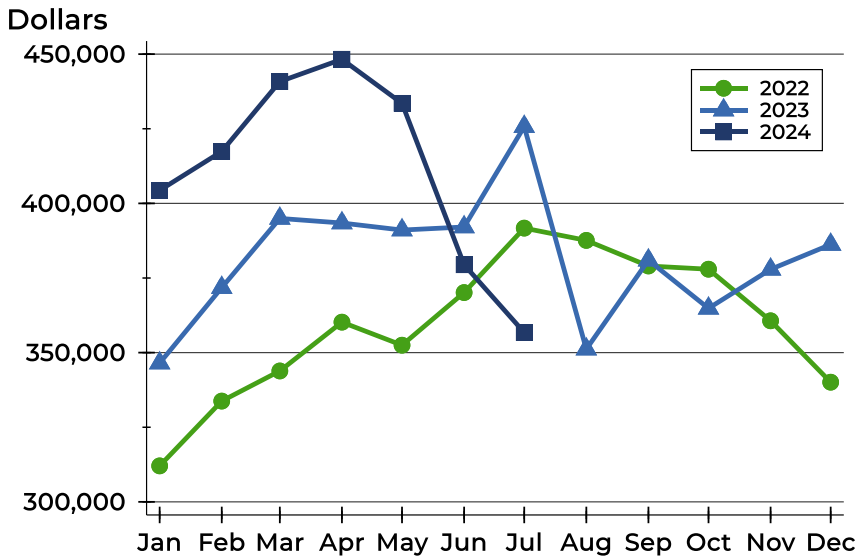
Price Range	Active Listings		Months' Supply	List Price		Days on Market		Price as % of Orig.	
	Number	Percent		Average	Median	Avg.	Med.	Avg.	Med.
Below \$25,000	0	0.0%	N/A	N/A	N/A	N/A	N/A	N/A	N/A
\$25,000-\$49,999	0	0.0%	N/A	N/A	N/A	N/A	N/A	N/A	N/A
\$50,000-\$99,999	0	0.0%	N/A	N/A	N/A	N/A	N/A	N/A	N/A
\$100,000-\$124,999	1	1.8%	2.0	120,000	120,000	18	18	100.0%	100.0%
\$125,000-\$149,999	2	3.5%	N/A	130,000	130,000	9	9	100.0%	100.0%
\$150,000-\$174,999	2	3.5%	2.7	168,900	168,900	83	83	100.0%	100.0%
\$175,000-\$199,999	0	0.0%	0.0	N/A	N/A	N/A	N/A	N/A	N/A
\$200,000-\$249,999	2	3.5%	0.7	238,750	238,750	29	29	100.0%	100.0%
\$250,000-\$299,999	10	17.5%	3.4	284,210	285,000	31	26	99.2%	100.0%
\$300,000-\$399,999	27	47.4%	3.4	344,591	339,000	65	45	98.1%	98.8%
\$400,000-\$499,999	8	14.0%	2.9	438,250	427,500	81	71	98.9%	100.0%
\$500,000-\$749,999	3	5.3%	1.4	575,667	565,000	88	99	98.5%	100.0%
\$750,000-\$999,999	2	3.5%	N/A	880,000	880,000	84	84	96.5%	96.5%
\$1,000,000 and up	0	0.0%	N/A	N/A	N/A	N/A	N/A	N/A	N/A





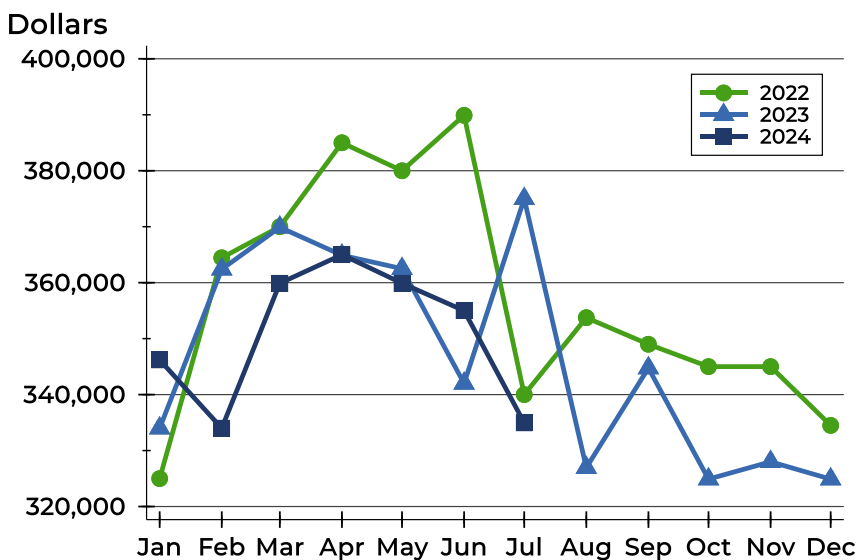
# Pottawatomie County Active Listings Analysis

## Average Price



Month	2022	2023	2024
January	312,066	346,498	<b>404,365</b>
February	333,767	371,789	<b>417,395</b>
March	343,857	394,956	<b>440,809</b>
April	360,213	393,429	<b>448,288</b>
May	352,492	391,065	<b>433,521</b>
June	370,121	392,093	<b>379,446</b>
July	391,716	425,723	<b>356,743</b>
August	387,600	351,161	
September	379,030	380,967	
October	377,949	364,845	
November	360,668	377,906	
December	340,103	386,226	

## Median Price

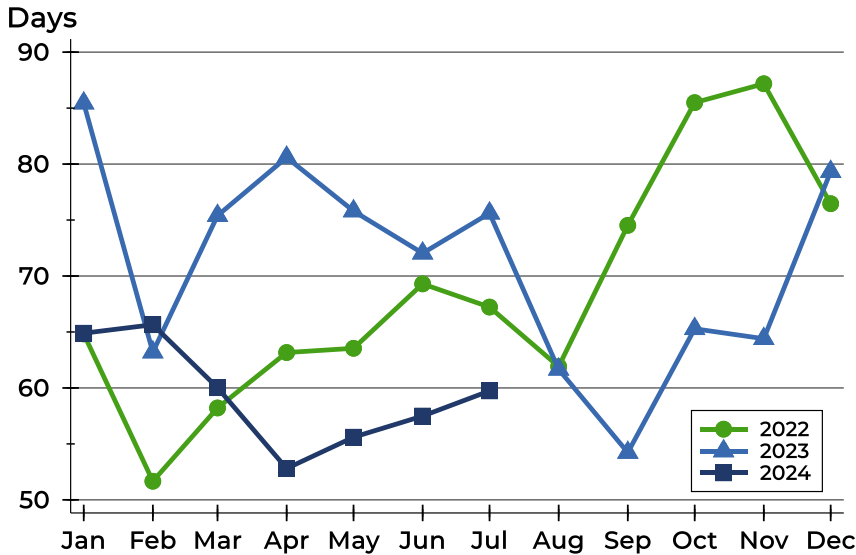


Month	2022	2023	2024
January	325,000	334,000	<b>346,200</b>
February	364,450	362,400	<b>334,000</b>
March	370,000	369,900	<b>359,900</b>
April	385,000	364,900	<b>365,000</b>
May	380,000	362,500	<b>359,900</b>
June	389,900	342,000	<b>355,000</b>
July	340,000	375,000	<b>334,950</b>
August	353,750	326,950	
September	349,000	344,750	
October	345,000	324,900	
November	345,000	328,000	
December	334,500	324,900	



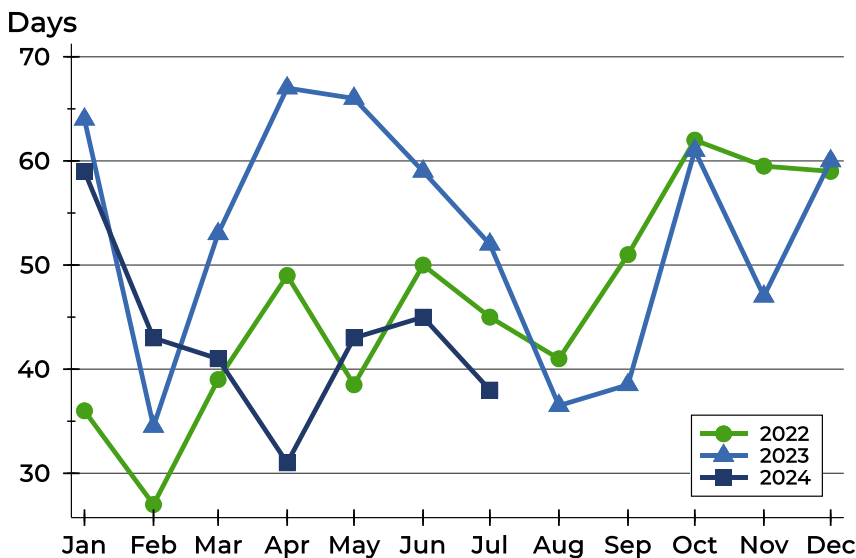
# Pottawatomie County Active Listings Analysis

## Average DOM



Month	2022	2023	2024
January	65	85	65
February	52	63	66
March	58	75	60
April	63	81	53
May	64	76	56
June	69	72	57
July	67	76	60
August	62	62	62
September	75	54	75
October	85	65	85
November	87	64	87
December	76	79	76

## Median DOM

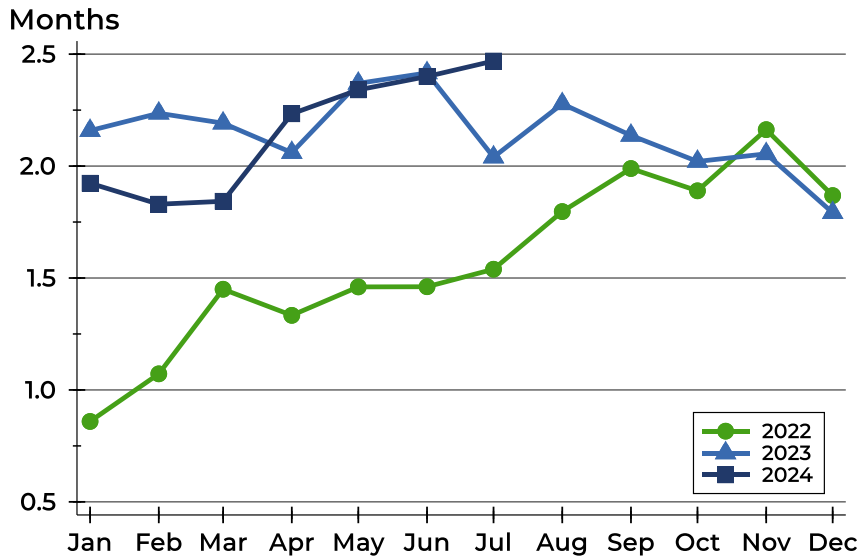


Month	2022	2023	2024
January	36	64	59
February	27	35	43
March	39	53	41
April	49	67	31
May	39	66	43
June	50	59	45
July	45	52	38
August	41	37	41
September	51	39	51
October	62	61	62
November	60	47	60
December	59	60	59



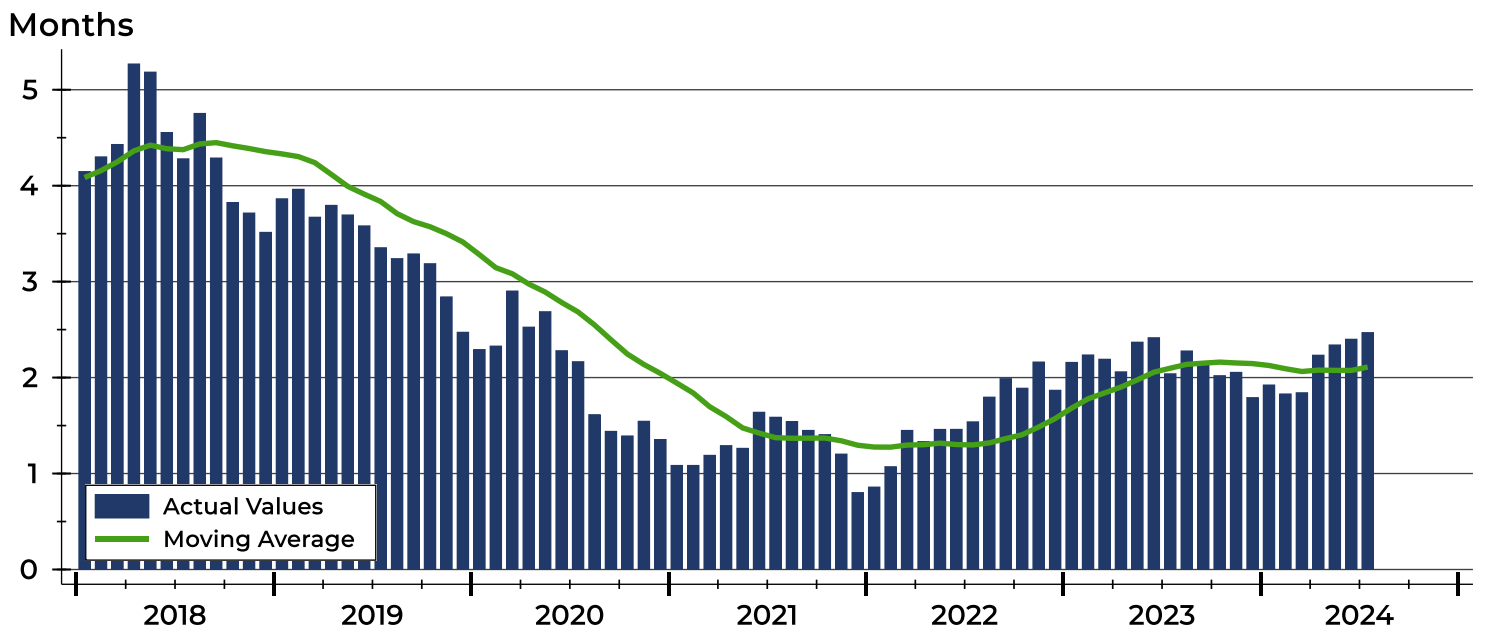
# Pottawatomie County Months' Supply Analysis

## Months' Supply by Month



Month	2022	2023	2024
January	0.9	2.2	1.9
February	1.1	2.2	1.8
March	1.4	2.2	1.8
April	1.3	2.1	2.2
May	1.5	2.4	2.3
June	1.5	2.4	2.4
July	1.5	2.0	2.5
August	1.8	2.3	
September	2.0	2.1	
October	1.9	2.0	
November	2.2	2.1	
December	1.9	1.8	

## History of Month's Supply





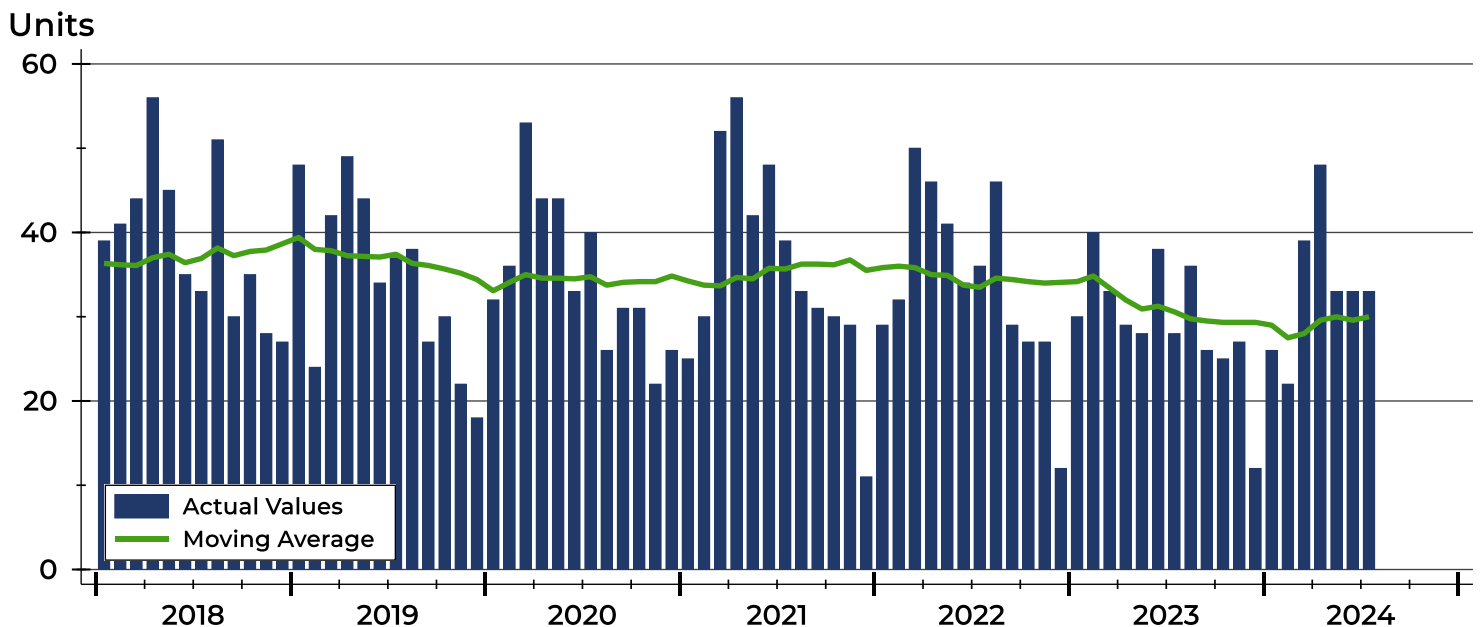
# Pottawatomie County New Listings Analysis

Summary Statistics for New Listings		2024	July 2023	Change
Current Month	New Listings	33	28	17.9%
	Volume (1,000s)	10,309	10,798	-4.5%
	Average List Price	312,402	385,643	-19.0%
	Median List Price	320,000	374,900	-14.6%
Year-to-Date	New Listings	234	226	3.5%
	Volume (1,000s)	84,392	80,097	5.4%
	Average List Price	360,649	354,410	1.8%
	Median List Price	338,250	339,700	-0.4%

A total of 33 new listings were added in Pottawatomie County during July, up 17.9% from the same month in 2023. Year-to-date Pottawatomie County has seen 234 new listings.

The median list price of these homes was \$320,000 down from \$374,900 in 2023.

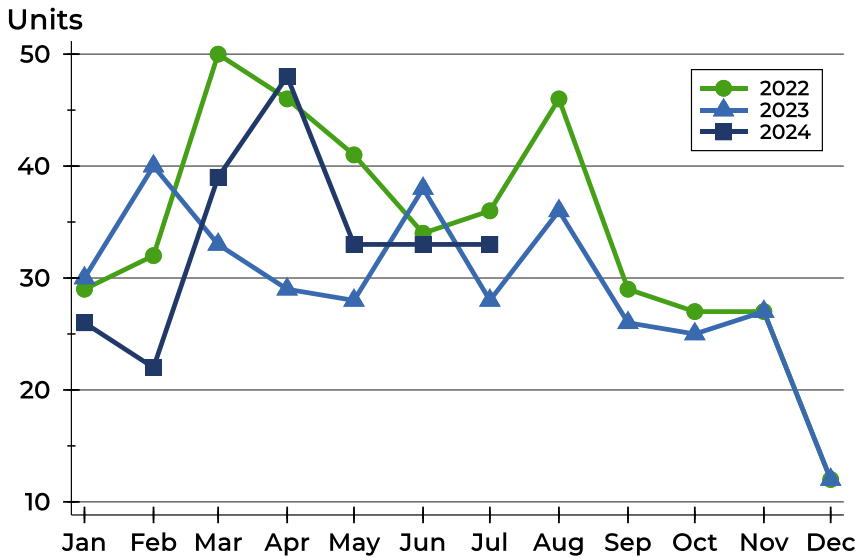
## History of New Listings





# Pottawatomie County New Listings Analysis

## New Listings by Month



Month	2022	2023	2024
January	29	30	26
February	32	40	22
March	50	33	39
April	46	29	48
May	41	28	33
June	34	38	33
July	36	28	33
August	46	36	33
September	29	26	33
October	27	25	33
November	27	27	33
December	12	12	33

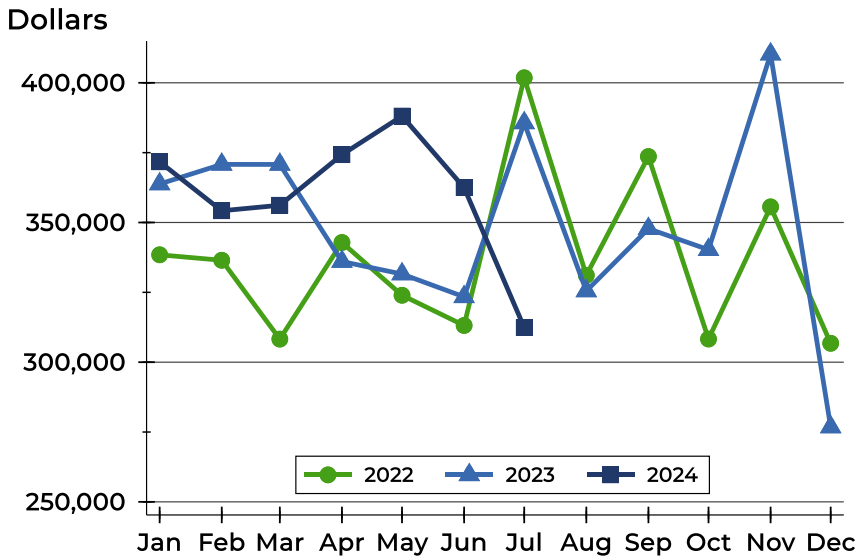
## New Listings by Price Range

Price Range	New Listings		List Price		Days on Market		Price as % of Orig.	
	Number	Percent	Average	Median	Avg.	Med.	Avg.	Med.
Below \$25,000	0	0.0%	N/A	N/A	N/A	N/A	N/A	N/A
\$25,000-\$49,999	0	0.0%	N/A	N/A	N/A	N/A	N/A	N/A
\$50,000-\$99,999	1	3.0%	65,000	65,000	7	7	100.0%	100.0%
\$100,000-\$124,999	1	3.0%	120,000	120,000	24	24	100.0%	100.0%
\$125,000-\$149,999	2	6.1%	132,000	132,000	6	6	100.0%	100.0%
\$150,000-\$174,999	0	0.0%	N/A	N/A	N/A	N/A	N/A	N/A
\$175,000-\$199,999	0	0.0%	N/A	N/A	N/A	N/A	N/A	N/A
\$200,000-\$249,999	3	9.1%	221,667	230,000	16	14	100.0%	100.0%
\$250,000-\$299,999	9	27.3%	285,156	285,000	16	20	99.8%	100.0%
\$300,000-\$399,999	11	33.3%	341,759	334,950	21	23	99.9%	100.0%
\$400,000-\$499,999	4	12.1%	433,125	425,000	18	21	100.0%	100.0%
\$500,000-\$749,999	2	6.1%	568,500	568,500	19	19	100.6%	100.6%
\$750,000-\$999,999	0	0.0%	N/A	N/A	N/A	N/A	N/A	N/A
\$1,000,000 and up	0	0.0%	N/A	N/A	N/A	N/A	N/A	N/A



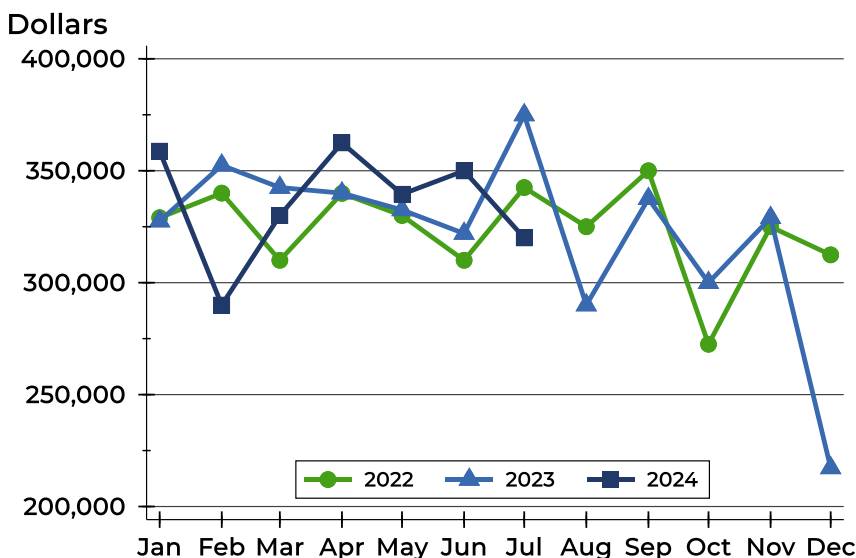
# Pottawatomie County New Listings Analysis

## Average Price



Month	2022	2023	2024
January	338,438	363,783	<b>371,723</b>
February	336,485	370,801	<b>354,200</b>
March	308,271	370,785	<b>356,182</b>
April	342,847	336,028	<b>374,273</b>
May	323,966	331,554	<b>388,111</b>
June	313,151	323,391	<b>362,474</b>
July	401,797	385,643	<b>312,402</b>
August	331,116	325,497	
September	373,607	347,785	
October	308,297	340,256	
November	355,596	410,263	
December	306,771	276,792	

## Median Price



Month	2022	2023	2024
January	329,000	327,500	<b>358,750</b>
February	340,000	352,450	<b>290,000</b>
March	310,000	342,500	<b>330,000</b>
April	339,900	340,000	<b>362,450</b>
May	330,000	332,500	<b>339,500</b>
June	310,000	321,950	<b>349,950</b>
July	342,500	374,900	<b>320,000</b>
August	325,000	290,000	
September	350,000	337,500	
October	272,500	300,000	
November	325,000	329,000	
December	312,425	217,250	



**July  
2024**

# Flint Hills MLS Statistics



**FLINT HILLS  
ASSOCIATION  
OF REALTORS®**

## Pottawatomie County Contracts Written Analysis

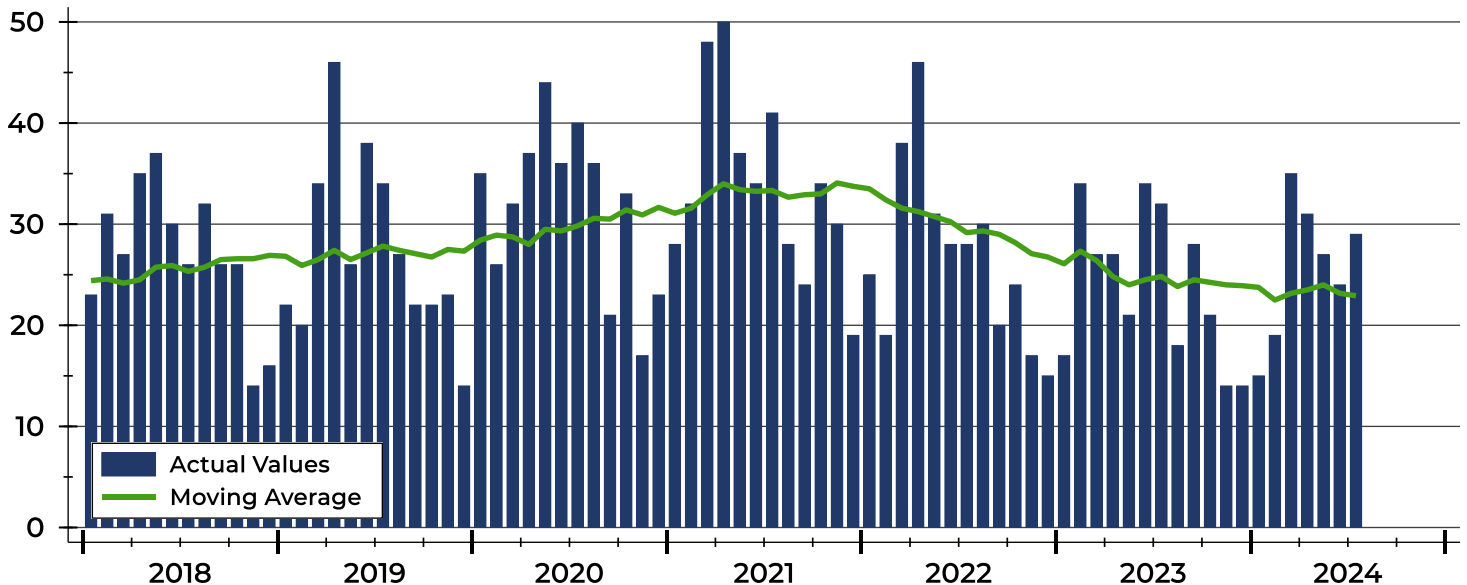
Summary Statistics for Contracts Written		2024	July 2023	Change	Year-to-Date		
		2024	2023		2024	2023	Change
Contracts Written		<b>29</b>	32	-9.4%	<b>180</b>	192	-6.3%
Volume (1,000s)		<b>10,557</b>	10,257	2.9%	<b>63,765</b>	61,529	3.6%
Average	Sale Price	<b>364,021</b>	320,544	13.6%	<b>354,249</b>	320,465	10.5%
	Days on Market	<b>42</b>	52	-19.2%	<b>42</b>	46	-8.7%
	Percent of Original	<b>98.2%</b>	94.0%	4.5%	<b>98.0%</b>	97.7%	0.3%
Median	Sale Price	<b>355,000</b>	317,450	11.8%	<b>332,450</b>	330,000	0.7%
	Days on Market	<b>37</b>	16	131.3%	<b>16</b>	14	14.3%
	Percent of Original	<b>100.0%</b>	98.5%	1.5%	<b>99.2%</b>	99.5%	-0.3%

A total of 29 contracts for sale were written in Pottawatomie County during the month of July, down from 32 in 2023. The median list price of these homes was \$355,000, up from \$317,450 the prior year.

Half of the homes that went under contract in July were on the market less than 37 days, compared to 16 days in July 2023.

## History of Contracts Written

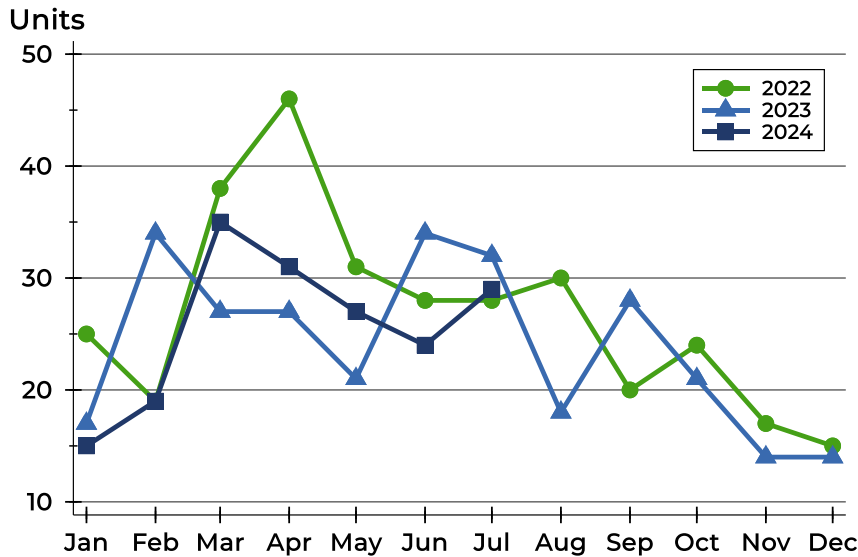
Units





# Pottawatomie County Contracts Written Analysis

## Contracts Written by Month



Month	2022	2023	2024
January	25	17	15
February	19	34	19
March	38	27	35
April	46	27	31
May	31	21	27
June	28	34	24
July	28	32	29
August	30	18	18
September	20	28	20
October	24	21	21
November	17	14	14
December	15	14	14

## Contracts Written by Price Range

Price Range	Contracts Written		List Price		Days on Market		Price as % of Orig.	
	Number	Percent	Average	Median	Avg.	Med.	Avg.	Med.
Below \$25,000	0	0.0%	N/A	N/A	N/A	N/A	N/A	N/A
\$25,000-\$49,999	0	0.0%	N/A	N/A	N/A	N/A	N/A	N/A
\$50,000-\$99,999	0	0.0%	N/A	N/A	N/A	N/A	N/A	N/A
\$100,000-\$124,999	1	3.4%	115,000	115,000	35	35	100.0%	100.0%
\$125,000-\$149,999	2	6.9%	132,000	132,000	33	33	95.2%	95.2%
\$150,000-\$174,999	0	0.0%	N/A	N/A	N/A	N/A	N/A	N/A
\$175,000-\$199,999	0	0.0%	N/A	N/A	N/A	N/A	N/A	N/A
\$200,000-\$249,999	3	10.3%	226,633	230,000	36	14	100.0%	100.0%
\$250,000-\$299,999	2	6.9%	282,250	282,250	3	3	100.0%	100.0%
\$300,000-\$399,999	11	37.9%	344,945	342,500	47	38	97.8%	98.4%
\$400,000-\$499,999	6	20.7%	437,500	430,000	41	48	97.3%	100.0%
\$500,000-\$749,999	4	13.8%	628,450	649,450	62	68	99.1%	100.0%
\$750,000-\$999,999	0	0.0%	N/A	N/A	N/A	N/A	N/A	N/A
\$1,000,000 and up	0	0.0%	N/A	N/A	N/A	N/A	N/A	N/A





**July  
2024**

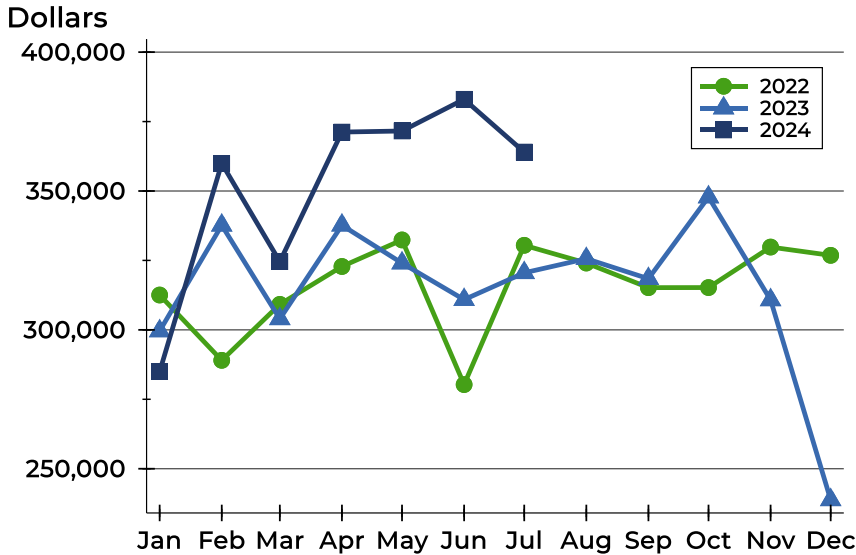
# Flint Hills MLS Statistics



**FLINT HILLS  
ASSOCIATION  
OF REALTORS®**

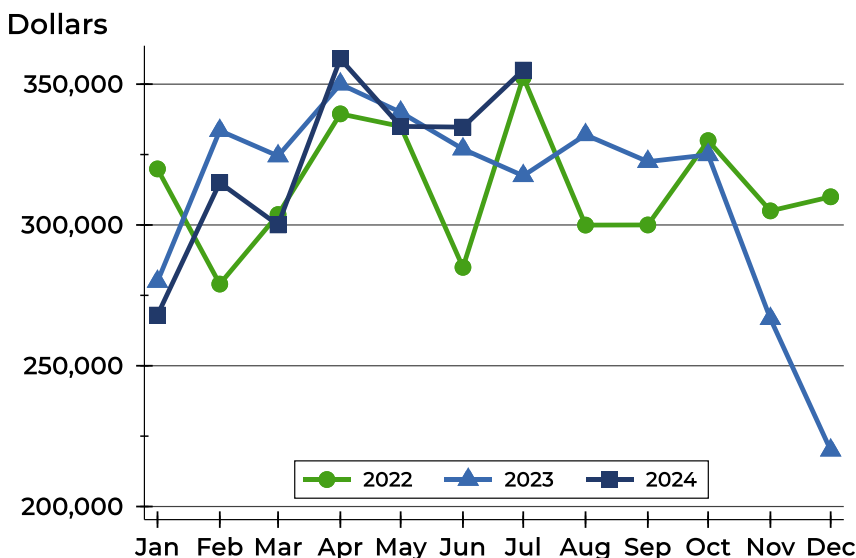
## Pottawatomie County Contracts Written Analysis

### Average Price



Month	2022	2023	2024
January	312,546	299,594	<b>284,980</b>
February	289,037	337,656	<b>359,942</b>
March	309,196	303,959	<b>324,583</b>
April	322,826	337,663	<b>371,223</b>
May	332,385	324,033	<b>371,615</b>
June	280,298	310,883	<b>383,033</b>
July	330,457	320,544	<b>364,021</b>
August	324,068	325,628	
September	315,205	318,421	
October	315,234	347,819	
November	329,815	310,786	
December	326,840	238,786	

### Median Price

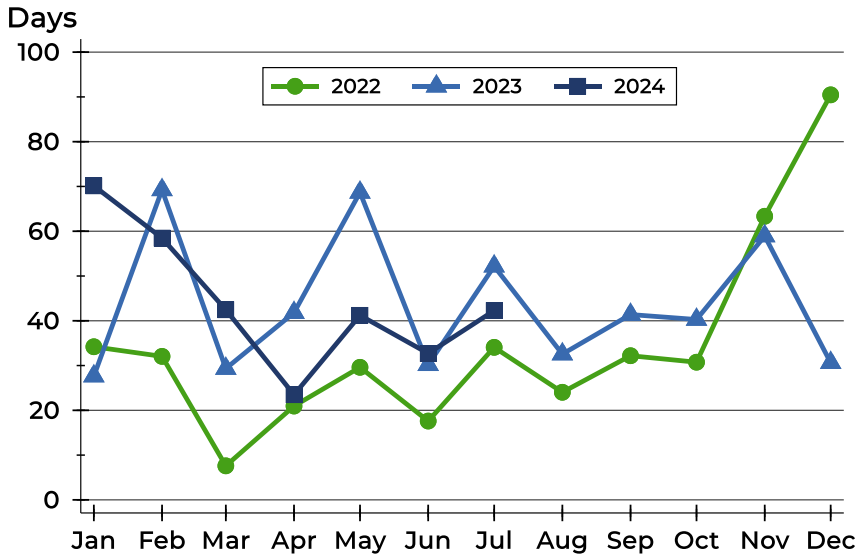


Month	2022	2023	2024
January	319,900	279,900	<b>268,000</b>
February	279,000	333,500	<b>315,000</b>
March	303,700	324,500	<b>300,000</b>
April	339,450	350,000	<b>359,000</b>
May	335,000	340,000	<b>335,000</b>
June	284,950	326,950	<b>334,750</b>
July	352,450	317,450	<b>355,000</b>
August	299,950	332,000	
September	300,000	322,500	
October	329,950	324,900	
November	305,000	266,703	
December	310,000	220,000	



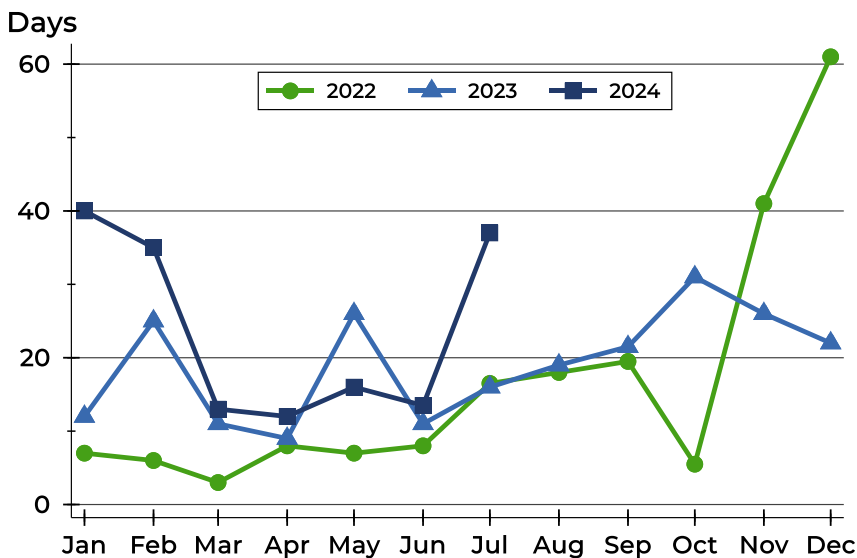
# Pottawatomie County Contracts Written Analysis

## Average DOM



Month	2022	2023	2024
January	34	28	70
February	32	69	58
March	8	29	42
April	21	42	23
May	30	69	41
June	18	30	33
July	34	52	42
August	24	33	
September	32	41	
October	31	40	
November	63	59	
December	90	31	

## Median DOM



Month	2022	2023	2024
January	7	12	40
February	6	25	35
March	3	11	13
April	8	9	12
May	7	26	16
June	8	11	14
July	17	16	37
August	18	19	
September	20	22	
October	6	31	
November	41	26	
December	61	22	



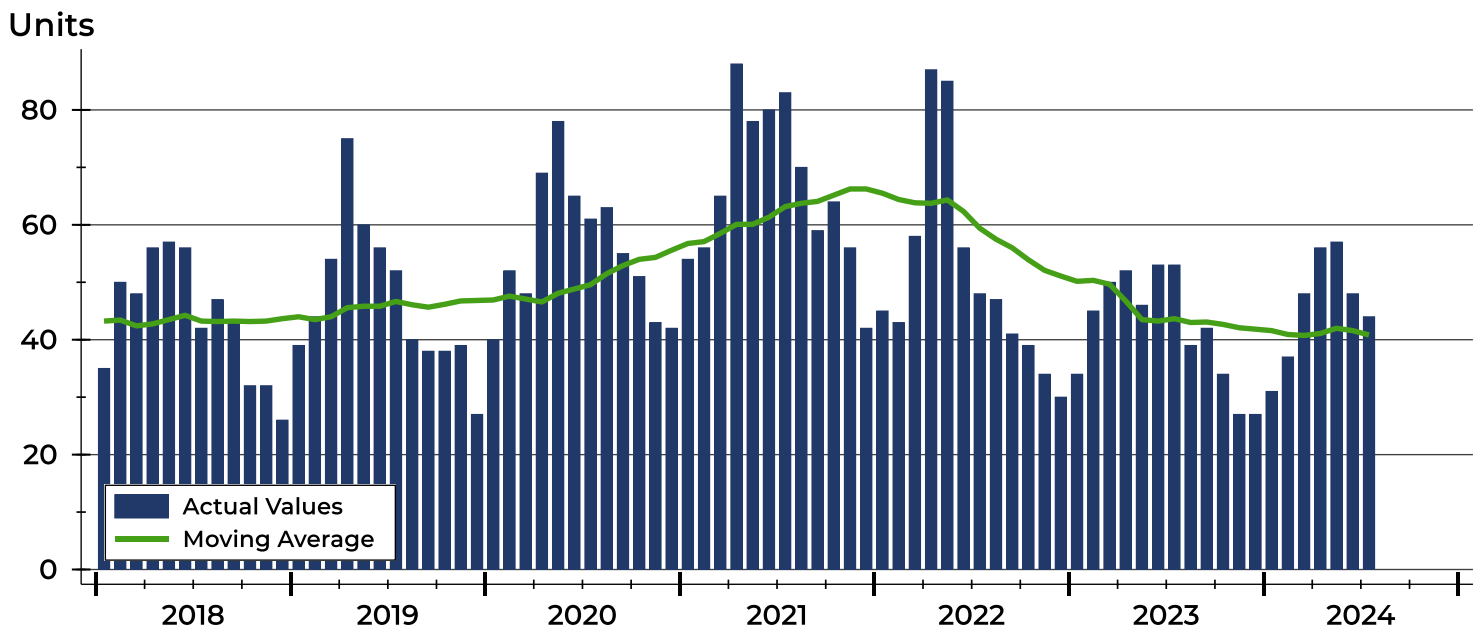
# Pottawatomie County Pending Contracts Analysis

Summary Statistics for Pending Contracts		2024	End of July 2023	Change
Pending Contracts		44	53	-17.0%
Volume (1,000s)		16,573	17,450	-5.0%
Average	List Price	376,651	329,236	14.4%
	Days on Market	40	44	-9.1%
	Percent of Original	99.3%	97.7%	1.6%
Median	List Price	352,475	319,000	10.5%
	Days on Market	31	12	158.3%
	Percent of Original	100.0%	100.0%	0.0%

A total of 44 listings in Pottawatomie County had contracts pending at the end of July, down from 53 contracts pending at the end of July 2023.

Pending contracts reflect listings with a contract in place at the end of the month. In contrast, contracts written measures the number of listings put under contract during the month.

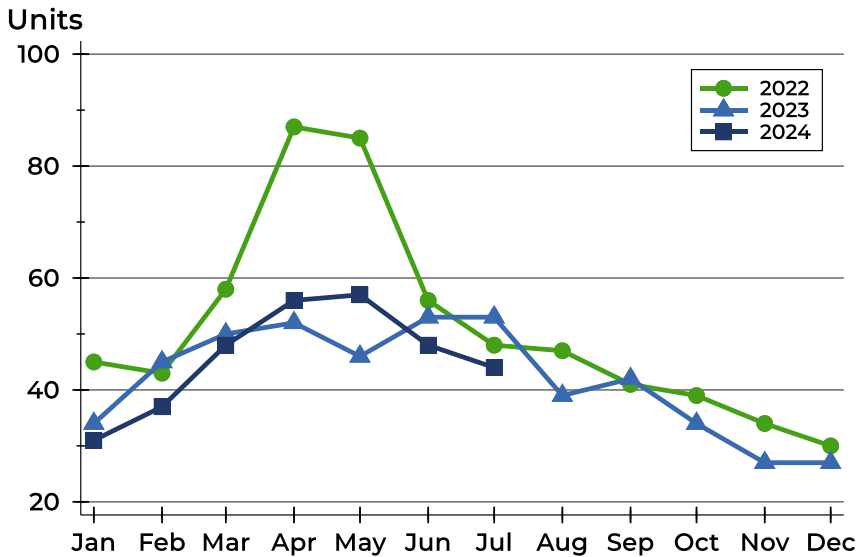
## History of Pending Contracts





## Pottawatomie County Pending Contracts Analysis

### Pending Contracts by Month



Month	2022	2023	2024
January	45	34	31
February	43	45	37
March	58	50	48
April	87	52	56
May	85	46	57
June	56	53	48
July	48	53	44
August	47	39	
September	41	42	
October	39	34	
November	34	27	
December	30	27	

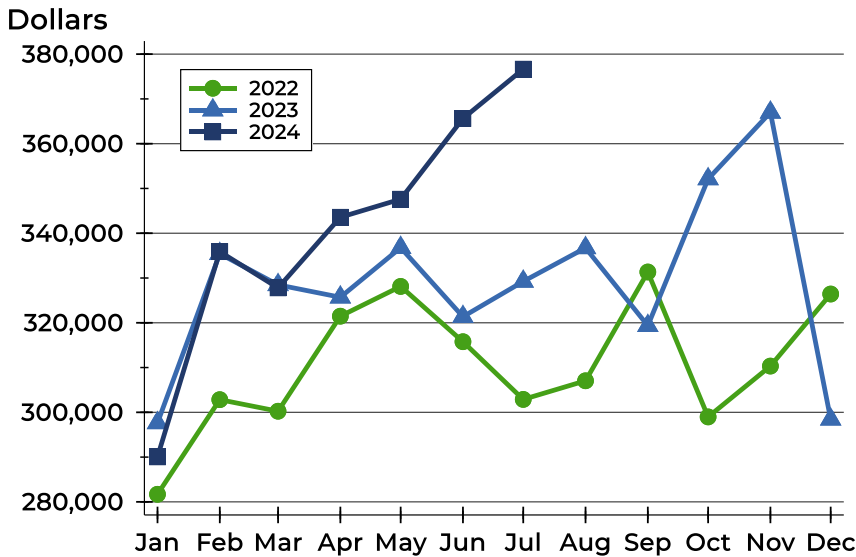
### Pending Contracts by Price Range

Price Range	Pending Contracts		List Price		Days on Market		Price as % of Orig.	
	Number	Percent	Average	Median	Avg.	Med.	Avg.	Med.
Below \$25,000	0	0.0%	N/A	N/A	N/A	N/A	N/A	N/A
\$25,000-\$49,999	0	0.0%	N/A	N/A	N/A	N/A	N/A	N/A
\$50,000-\$99,999	0	0.0%	N/A	N/A	N/A	N/A	N/A	N/A
\$100,000-\$124,999	1	2.3%	115,000	115,000	35	35	100.0%	100.0%
\$125,000-\$149,999	2	4.5%	132,000	132,000	33	33	95.2%	95.2%
\$150,000-\$174,999	0	0.0%	N/A	N/A	N/A	N/A	N/A	N/A
\$175,000-\$199,999	0	0.0%	N/A	N/A	N/A	N/A	N/A	N/A
\$200,000-\$249,999	6	13.6%	233,200	234,950	31	23	100.0%	100.0%
\$250,000-\$299,999	4	9.1%	270,875	264,750	15	8	107.5%	100.0%
\$300,000-\$399,999	18	40.9%	351,008	352,475	42	28	98.6%	99.9%
\$400,000-\$499,999	7	15.9%	432,143	425,000	37	43	97.7%	100.0%
\$500,000-\$749,999	5	11.4%	613,760	599,900	50	37	99.3%	100.0%
\$750,000-\$999,999	0	0.0%	N/A	N/A	N/A	N/A	N/A	N/A
\$1,000,000 and up	1	2.3%	1,299,000	1,299,000	141	141	92.9%	92.9%



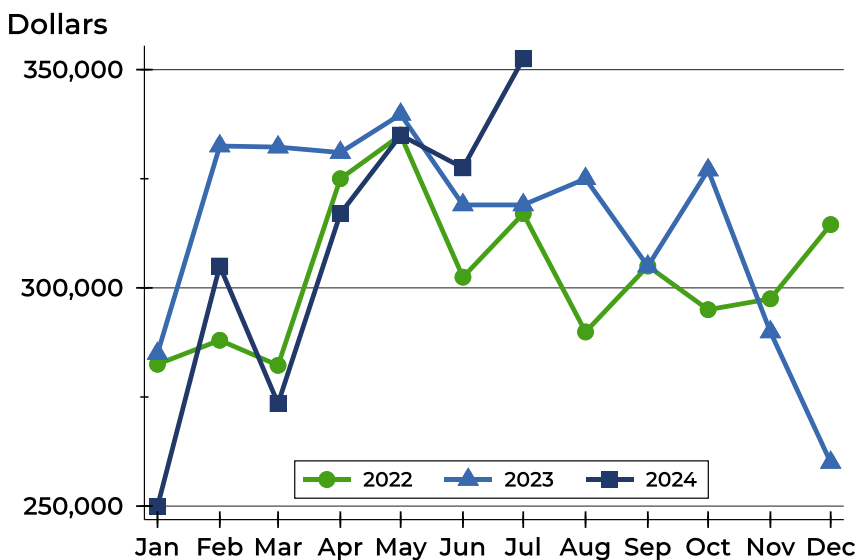
# Pottawatomie County Pending Contracts Analysis

## Average Price



Month	2022	2023	2024
January	281,700	297,634	<b>290,045</b>
February	302,832	335,418	<b>335,886</b>
March	300,248	328,472	<b>327,794</b>
April	321,471	325,708	<b>343,570</b>
May	328,125	336,778	<b>347,611</b>
June	315,771	321,353	<b>365,630</b>
July	302,886	329,236	<b>376,651</b>
August	307,048	336,728	
September	331,346	319,350	
October	298,977	352,121	
November	310,334	366,993	
December	326,423	298,444	

## Median Price

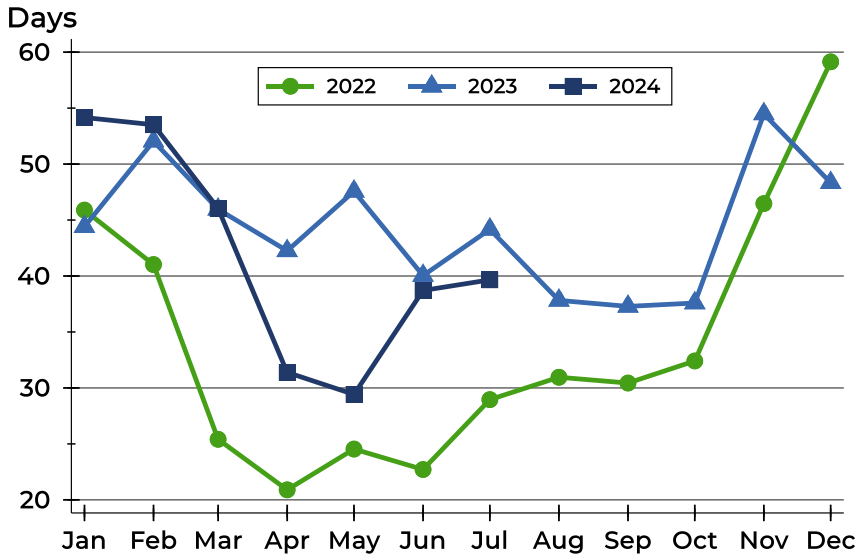


Month	2022	2023	2024
January	282,500	284,950	<b>249,900</b>
February	288,000	332,500	<b>305,000</b>
March	282,250	332,250	<b>273,500</b>
April	325,000	331,000	<b>317,000</b>
May	335,000	339,750	<b>335,000</b>
June	302,450	319,000	<b>327,500</b>
July	317,000	319,000	<b>352,475</b>
August	289,900	325,000	
September	305,000	304,950	
October	295,000	327,000	
November	297,500	289,900	
December	314,500	260,000	



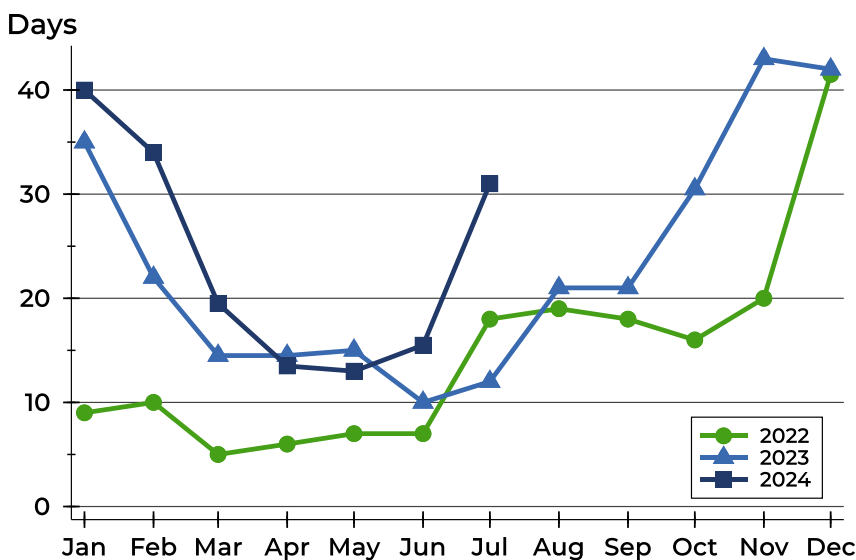
# Pottawatomie County Pending Contracts Analysis

## Average DOM



Month	2022	2023	2024
January	46	44	54
February	41	52	54
March	25	46	46
April	21	42	31
May	25	48	29
June	23	40	39
July	29	44	40
August	31	38	38
September	30	37	37
October	32	38	38
November	46	54	54
December	59	48	48

## Median DOM



Month	2022	2023	2024
January	9	35	40
February	10	22	34
March	5	15	20
April	6	15	14
May	7	15	13
June	7	10	16
July	18	12	31
August	19	21	21
September	18	21	21
October	16	31	31
November	20	43	43
December	42	42	42