



**August
2024**

Flint Hills MLS Statistics



**FLINT HILLS
ASSOCIATION
OF REALTORS®**

Pottawatomie County Housing Report



Market Overview

Pottawatomie County Home Sales Rose in August

Total home sales in Pottawatomie County rose by 6.5% last month to 33 units, compared to 31 units in August 2023. Total sales volume was \$12.7 million, up 30.9% from a year earlier.

The median sale price in August was \$360,000, up from \$316,806 a year earlier. Homes that sold in August were typically on the market for 22 days and sold for 100.0% of their list prices.

Pottawatomie County Active Listings Up at End of August

The total number of active listings in Pottawatomie County at the end of August was 57 units, up from 56 at the same point in 2023. This represents a 2.4 months' supply of homes available for sale. The median list price of homes on the market at the end of August was \$325,000.

During August, a total of 28 contracts were written up from 18 in August 2023. At the end of the month, there were 47 contracts still pending.

Report Contents

- Summary Statistics – Page 2
- Closed Listing Analysis – Page 3
- Active Listings Analysis – Page 7
- Months' Supply Analysis – Page 11
- New Listings Analysis – Page 12
- Contracts Written Analysis – Page 15
- Pending Contracts Analysis – Page 19

Contact Information

Margaret Pendleton, Association Executive
 Flint Hills Association of REALTORS®
 205 S. Seth Child Road
 Manhattan, KS 66502
 785-776-1203
ae@flinthillsrealtors.net
www.flinthillsrealtors.net



Pottawatomie County Summary Statistics

August MLS Statistics Three-year History		Current Month			Year-to-Date		
		2024	2023	2022	2024	2023	2022
Home Sales		33	31	36	196	204	243
Change from prior year		6.5%	-13.9%	-18.2%	-3.9%	-16.0%	-11.0%
Active Listings		57	56	56	N/A	N/A	N/A
Change from prior year		1.8%	0.0%	12.0%			
Months' Supply		2.4	2.3	1.8	N/A	N/A	N/A
Change from prior year		4.3%	27.8%	20.0%			
New Listings		33	36	46	269	262	314
Change from prior year		-8.3%	-21.7%	39.4%	2.7%	-16.6%	-3.4%
Contracts Written		28	18	30	207	210	245
Change from prior year		55.6%	-40.0%	7.1%	-1.4%	-14.3%	-17.8%
Pending Contracts		47	39	47	N/A	N/A	N/A
Change from prior year		20.5%	-17.0%	-32.9%			
Sales Volume (1,000s)		12,660	9,668	11,407	66,576	65,417	75,765
Change from prior year		30.9%	-15.2%	-5.9%	1.8%	-13.7%	2.9%
Average	Sale Price	383,633	311,874	316,847	339,674	320,671	311,791
	Change from prior year	23.0%	-1.6%	15.0%	5.9%	2.8%	15.6%
	List Price of Actives	362,711	351,161	387,600	N/A	N/A	N/A
	Change from prior year	3.3%	-9.4%	42.0%			
	Days on Market	35	49	28	42	48	25
Change from prior year	-28.6%	75.0%	-12.5%	-12.5%	92.0%	-21.9%	
Percent of List	99.2%	99.6%	99.3%	99.0%	99.5%	100.6%	
Change from prior year	-0.4%	0.3%	-0.2%	-0.5%	-1.1%	0.7%	
Percent of Original	97.7%	97.0%	98.9%	97.6%	97.8%	100.1%	
Change from prior year	0.7%	-1.9%	0.2%	-0.2%	-2.3%	1.0%	
Median	Sale Price	360,000	316,806	337,500	324,950	325,000	320,000
	Change from prior year	13.6%	-6.1%	20.0%	0.0%	1.6%	19.0%
	List Price of Actives	325,000	326,950	353,750	N/A	N/A	N/A
	Change from prior year	-0.6%	-7.6%	26.8%			
	Days on Market	22	12	12	19	14	7
Change from prior year	83.3%	0.0%	33.3%	35.7%	100.0%	-12.5%	
Percent of List	100.0%	100.0%	100.0%	100.0%	100.0%	100.0%	
Change from prior year	0.0%	0.0%	0.0%	0.0%	0.0%	0.0%	
Percent of Original	98.6%	99.0%	98.8%	98.6%	99.5%	100.0%	
Change from prior year	-0.4%	0.2%	-1.2%	-0.9%	-0.5%	0.0%	

Note: Year-to-date statistics cannot be calculated for Active Listings, Months' Supply and Pending Contracts.



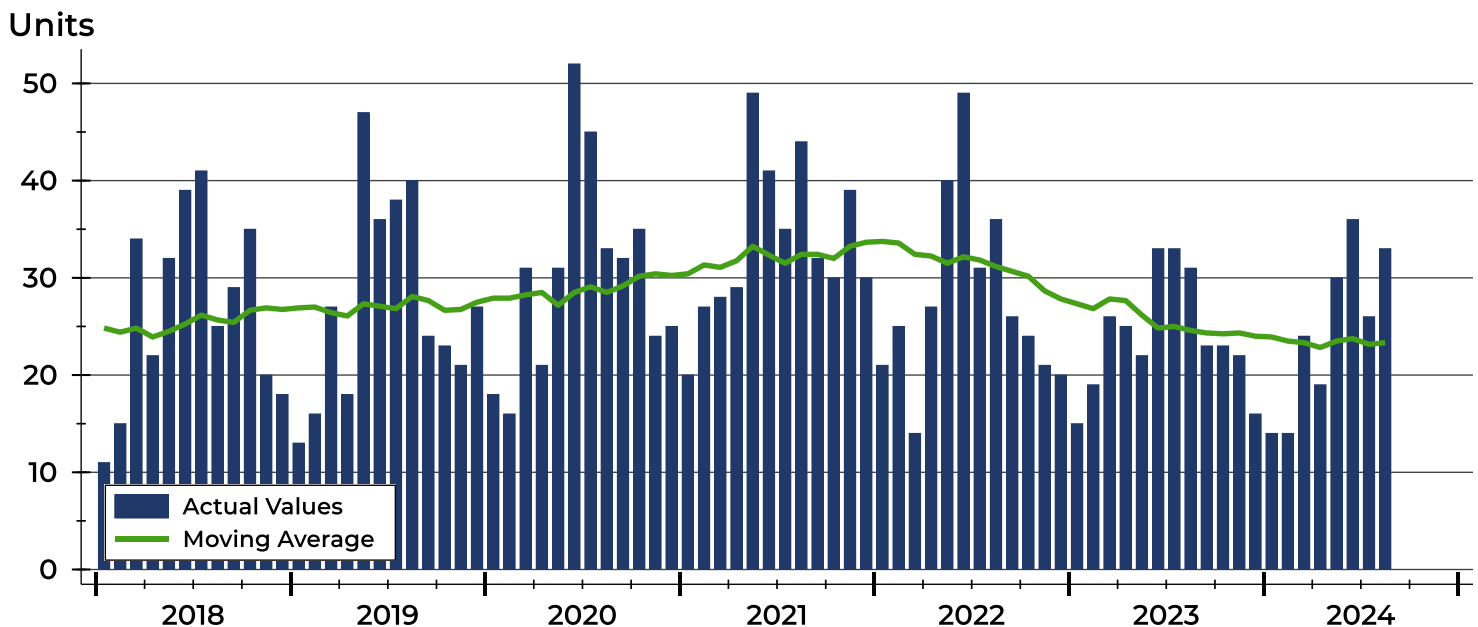
Pottawatomie County Closed Listings Analysis

Summary Statistics for Closed Listings		2024	August 2023	Change	2024	Year-to-Date 2023	Change
Closed Listings		33	31	6.5%	196	204	-3.9%
Volume (1,000s)		12,660	9,668	30.9%	66,576	65,417	1.8%
Months' Supply		2.4	2.3	4.3%	N/A	N/A	N/A
Average	Sale Price	383,633	311,874	23.0%	339,674	320,671	5.9%
	Days on Market	35	49	-28.6%	42	48	-12.5%
	Percent of List	99.2%	99.6%	-0.4%	99.0%	99.5%	-0.5%
	Percent of Original	97.7%	97.0%	0.7%	97.6%	97.8%	-0.2%
Median	Sale Price	360,000	316,806	13.6%	324,950	325,000	0.0%
	Days on Market	22	12	83.3%	19	14	35.7%
	Percent of List	100.0%	100.0%	0.0%	100.0%	100.0%	0.0%
	Percent of Original	98.6%	99.0%	-0.4%	98.6%	99.5%	-0.9%

A total of 33 homes sold in Pottawatomie County in August, up from 31 units in August 2023. Total sales volume rose to \$12.7 million compared to \$9.7 million in the previous year.

The median sales price in August was \$360,000, up 13.6% compared to the prior year. Median days on market was 22 days, down from 35 days in July, but up from 12 in August 2023.

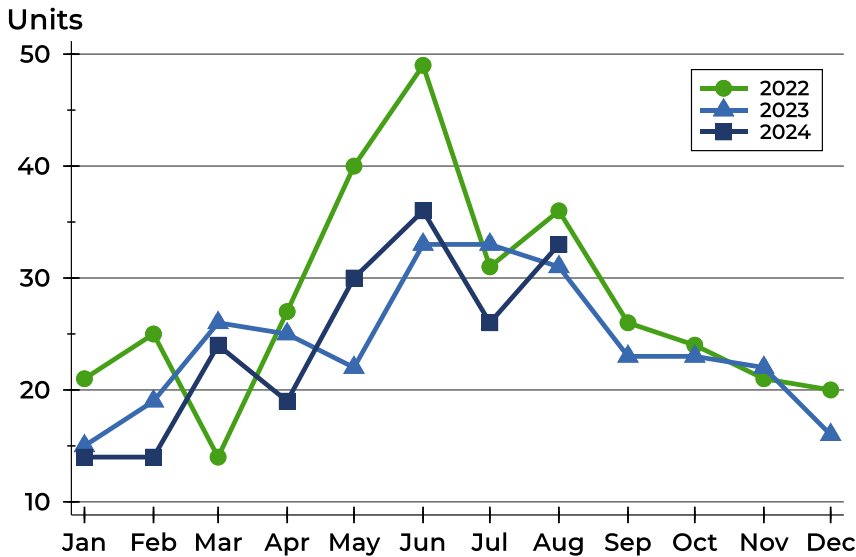
History of Closed Listings





Pottawatomie County Closed Listings Analysis

Closed Listings by Month



Month	2022	2023	2024
January	21	15	14
February	25	19	14
March	14	26	24
April	27	25	19
May	40	22	30
June	49	33	36
July	31	33	26
August	36	31	33
September	26	23	26
October	24	23	26
November	21	22	26
December	20	16	26

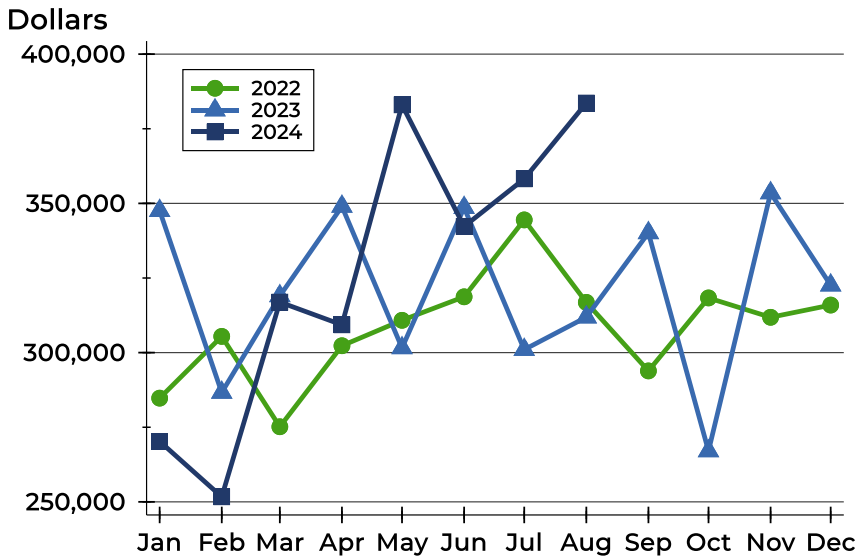
Closed Listings by Price Range

Price Range	Sales		Months' Supply	Sale Price		Days on Market		Price as % of List		Price as % of Orig.	
	Number	Percent		Average	Median	Avg.	Med.	Avg.	Med.	Avg.	Med.
Below \$25,000	0	0.0%	N/A	N/A	N/A	N/A	N/A	N/A	N/A	N/A	N/A
\$25,000-\$49,999	0	0.0%	N/A	N/A	N/A	N/A	N/A	N/A	N/A	N/A	N/A
\$50,000-\$99,999	0	0.0%	N/A	N/A	N/A	N/A	N/A	N/A	N/A	N/A	N/A
\$100,000-\$124,999	1	3.0%	2.0	115,000	115,000	35	35	100.0%	100.0%	100.0%	100.0%
\$125,000-\$149,999	1	3.0%	2.2	135,000	135,000	1	1	104.7%	104.7%	104.7%	104.7%
\$150,000-\$174,999	0	0.0%	N/A	N/A	N/A	N/A	N/A	N/A	N/A	N/A	N/A
\$175,000-\$199,999	0	0.0%	0.7	N/A	N/A	N/A	N/A	N/A	N/A	N/A	N/A
\$200,000-\$249,999	2	6.1%	0.8	217,000	217,000	19	19	93.3%	93.3%	93.3%	93.3%
\$250,000-\$299,999	2	6.1%	4.6	272,500	272,500	7	7	98.3%	98.3%	98.3%	98.3%
\$300,000-\$399,999	17	51.5%	2.5	349,359	350,000	40	25	99.3%	100.0%	97.9%	98.6%
\$400,000-\$499,999	7	21.2%	2.7	431,143	425,000	31	15	100.2%	100.0%	97.9%	100.0%
\$500,000-\$749,999	2	6.1%	1.3	636,903	636,903	20	20	102.2%	102.2%	100.5%	100.5%
\$750,000-\$999,999	0	0.0%	N/A	N/A	N/A	N/A	N/A	N/A	N/A	N/A	N/A
\$1,000,000 and up	1	3.0%	12.0	1,200,000	1,200,000	141	141	92.4%	92.4%	85.8%	85.8%



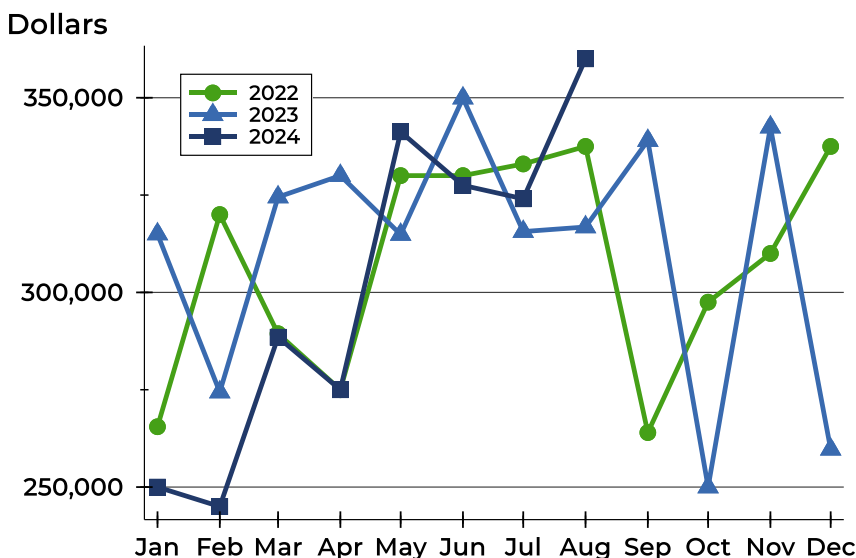
Pottawatomie County Closed Listings Analysis

Average Price



Month	2022	2023	2024
January	284,752	347,548	270,281
February	305,443	286,647	251,689
March	275,167	319,004	316,938
April	302,308	348,976	309,311
May	310,831	301,576	383,004
June	318,706	348,576	342,261
July	344,468	301,005	358,219
August	316,847	311,874	383,633
September	293,881	340,115	
October	318,325	267,050	
November	311,843	353,491	
December	315,935	322,588	

Median Price

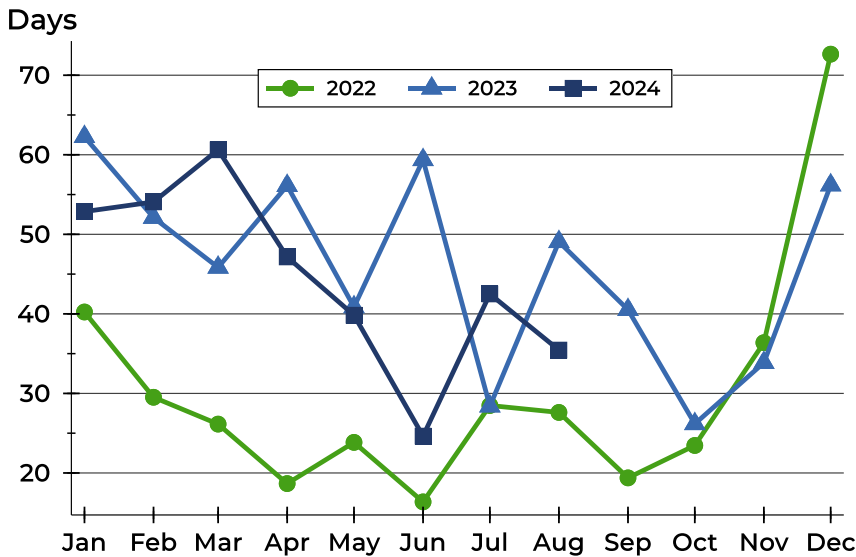


Month	2022	2023	2024
January	265,500	315,000	250,000
February	320,000	274,400	245,000
March	289,400	324,500	288,500
April	275,000	330,000	275,000
May	330,000	314,875	341,250
June	330,000	349,900	327,500
July	333,000	315,626	324,050
August	337,500	316,806	360,000
September	264,000	339,000	
October	297,500	250,000	
November	310,000	342,450	
December	337,500	259,703	



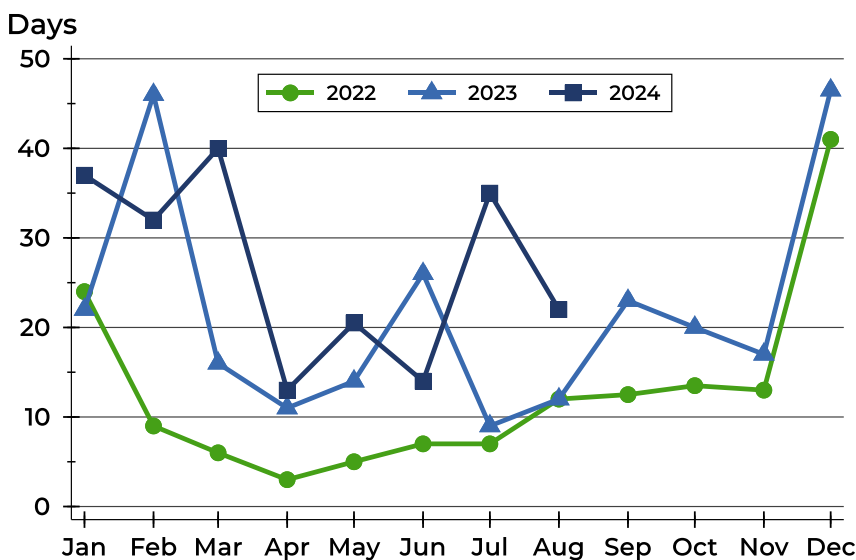
Pottawatomie County Closed Listings Analysis

Average DOM



Month	2022	2023	2024
January	40	62	53
February	30	52	54
March	26	46	61
April	19	56	47
May	24	41	40
June	16	59	25
July	28	28	43
August	28	49	35
September	19	41	
October	23	26	
November	36	34	
December	73	56	

Median DOM



Month	2022	2023	2024
January	24	22	37
February	9	46	32
March	6	16	40
April	3	11	13
May	5	14	21
June	7	26	14
July	7	9	35
August	12	12	22
September	13	23	
October	14	20	
November	13	17	
December	41	47	



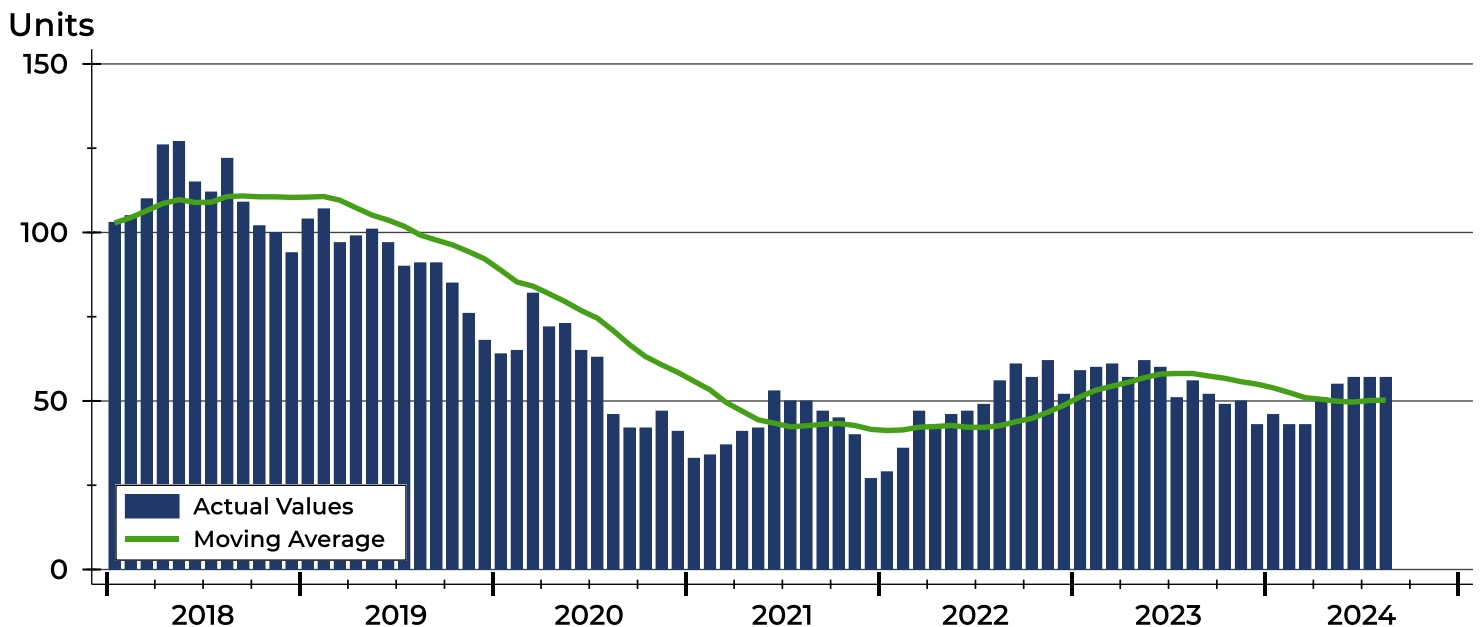
Pottawatomie County Active Listings Analysis

Summary Statistics for Active Listings		2024	End of August 2023	Change
Active Listings		57	56	1.8%
Volume (1,000s)		20,675	19,665	5.1%
Months' Supply		2.4	2.3	4.3%
Average	List Price	362,711	351,161	3.3%
	Days on Market	55	62	-11.3%
	Percent of Original	98.7%	97.9%	0.8%
Median	List Price	325,000	326,950	-0.6%
	Days on Market	35	37	-5.4%
	Percent of Original	100.0%	100.0%	0.0%

A total of 57 homes were available for sale in Pottawatomie County at the end of August. This represents a 2.4 months' supply of active listings.

The median list price of homes on the market at the end of August was \$325,000, down 0.6% from 2023. The typical time on market for active listings was 35 days, down from 37 days a year earlier.

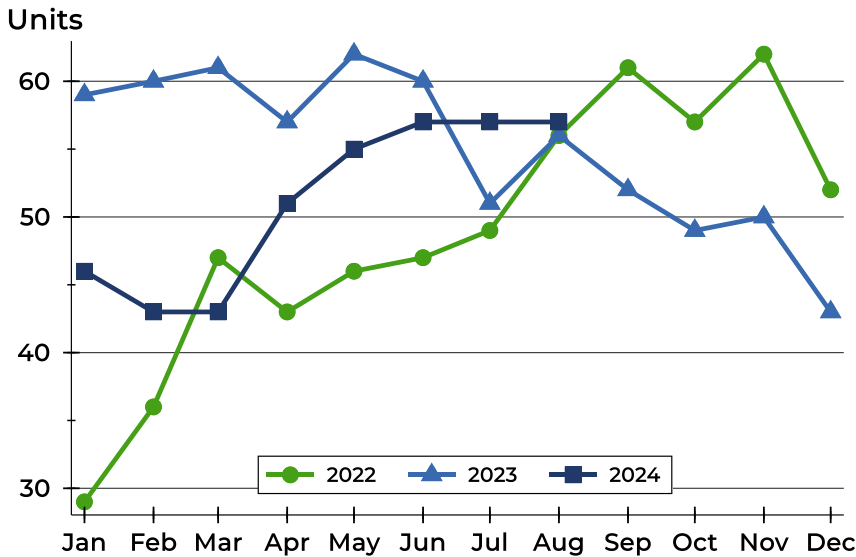
History of Active Listings





Pottawatomie County Active Listings Analysis

Active Listings by Month



Month	2022	2023	2024
January	29	59	46
February	36	60	43
March	47	61	43
April	43	57	51
May	46	62	55
June	47	60	57
July	49	51	57
August	56	56	57
September	61	52	
October	57	49	
November	62	50	
December	52	43	

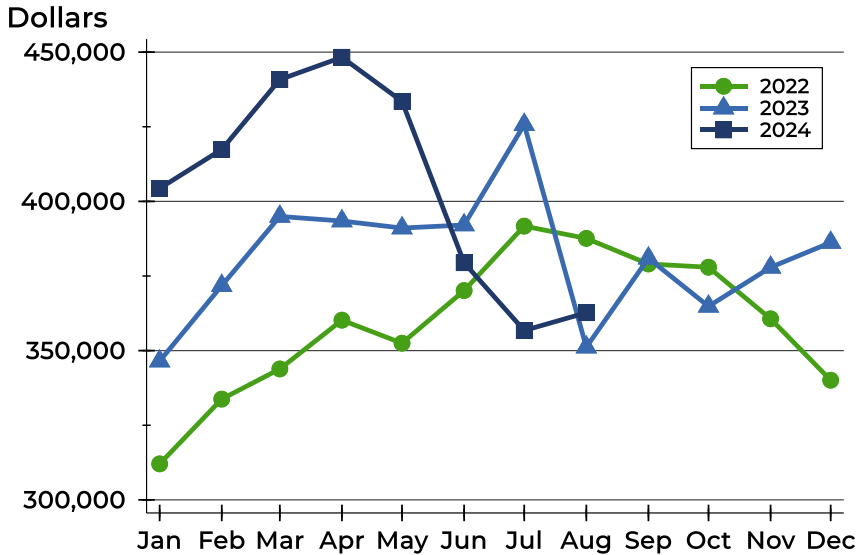
Active Listings by Price Range

Price Range	Active Listings		Months' Supply	List Price		Days on Market		Price as % of Orig.	
	Number	Percent		Average	Median	Avg.	Med.	Avg.	Med.
Below \$25,000	0	0.0%	N/A	N/A	N/A	N/A	N/A	N/A	N/A
\$25,000-\$49,999	0	0.0%	N/A	N/A	N/A	N/A	N/A	N/A	N/A
\$50,000-\$99,999	1	1.8%	N/A	85,000	85,000	9	9	100.0%	100.0%
\$100,000-\$124,999	1	1.8%	2.0	105,000	105,000	49	49	87.5%	87.5%
\$125,000-\$149,999	2	3.5%	2.2	132,500	132,500	16	16	100.0%	100.0%
\$150,000-\$174,999	2	3.5%	N/A	168,900	168,900	83	83	100.0%	100.0%
\$175,000-\$199,999	1	1.8%	0.7	184,000	184,000	28	28	100.0%	100.0%
\$200,000-\$249,999	2	3.5%	0.8	238,700	238,700	31	31	99.0%	99.0%
\$250,000-\$299,999	13	22.8%	4.6	284,169	285,000	36	24	99.1%	100.0%
\$300,000-\$399,999	21	36.8%	2.5	343,493	335,000	65	46	98.9%	100.0%
\$400,000-\$499,999	8	14.0%	2.7	431,094	427,500	69	49	98.2%	100.0%
\$500,000-\$749,999	3	5.3%	1.3	584,667	599,000	66	54	99.1%	100.0%
\$750,000-\$999,999	2	3.5%	N/A	880,000	880,000	115	115	96.5%	96.5%
\$1,000,000 and up	1	1.8%	12.0	1,350,000	1,350,000	2	2	100.0%	100.0%



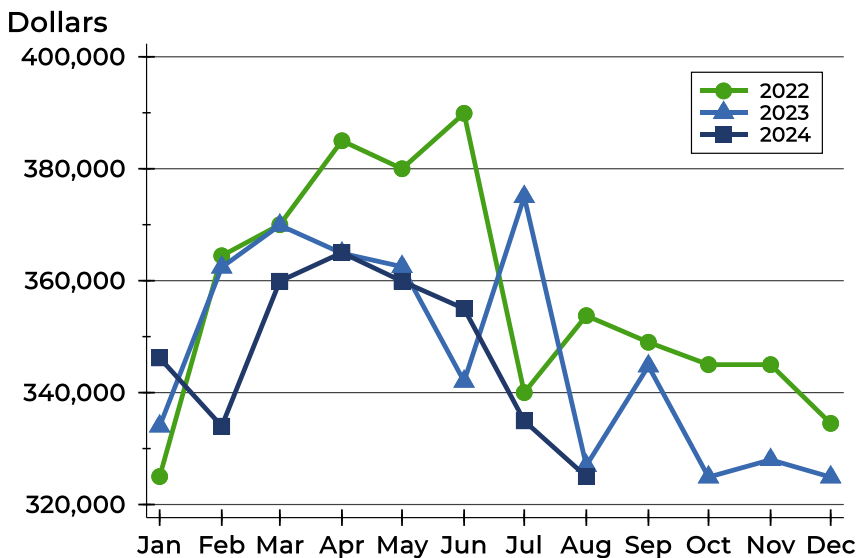
Pottawatomie County Active Listings Analysis

Average Price



Month	2022	2023	2024
January	312,066	346,498	404,365
February	333,767	371,789	417,395
March	343,857	394,956	440,809
April	360,213	393,429	448,288
May	352,492	391,065	433,521
June	370,121	392,093	379,446
July	391,716	425,723	356,743
August	387,600	351,161	362,711
September	379,030	380,967	
October	377,949	364,845	
November	360,668	377,906	
December	340,103	386,226	

Median Price

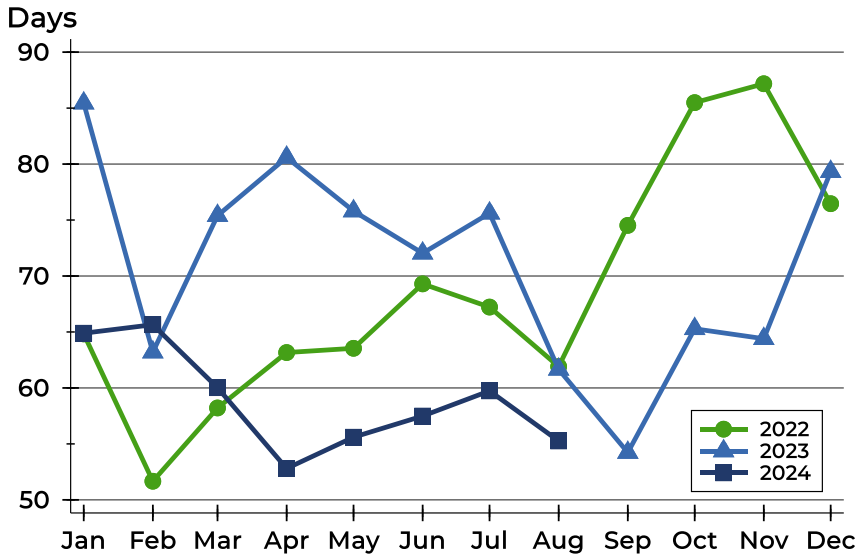


Month	2022	2023	2024
January	325,000	334,000	346,200
February	364,450	362,400	334,000
March	370,000	369,900	359,900
April	385,000	364,900	365,000
May	380,000	362,500	359,900
June	389,900	342,000	355,000
July	340,000	375,000	334,950
August	353,750	326,950	325,000
September	349,000	344,750	
October	345,000	324,900	
November	345,000	328,000	
December	334,500	324,900	



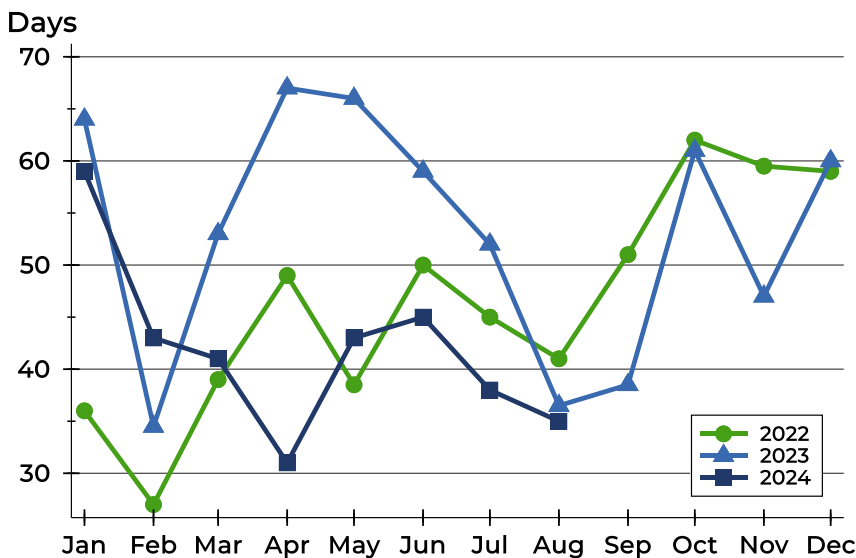
Pottawatomie County Active Listings Analysis

Average DOM



Month	2022	2023	2024
January	65	85	65
February	52	63	66
March	58	75	60
April	63	81	53
May	64	76	56
June	69	72	57
July	67	76	60
August	62	62	55
September	75	54	
October	85	65	
November	87	64	
December	76	79	

Median DOM

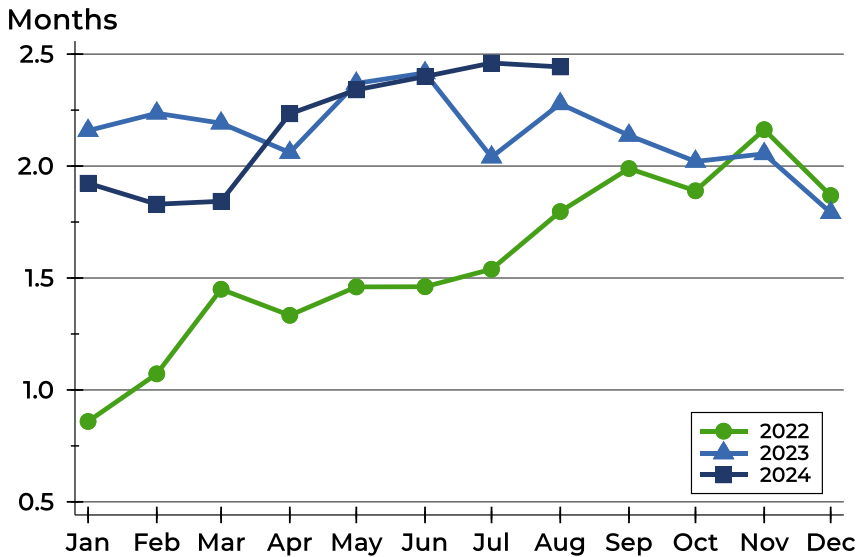


Month	2022	2023	2024
January	36	64	59
February	27	35	43
March	39	53	41
April	49	67	31
May	39	66	43
June	50	59	45
July	45	52	38
August	41	37	35
September	51	39	
October	62	61	
November	60	47	
December	59	60	



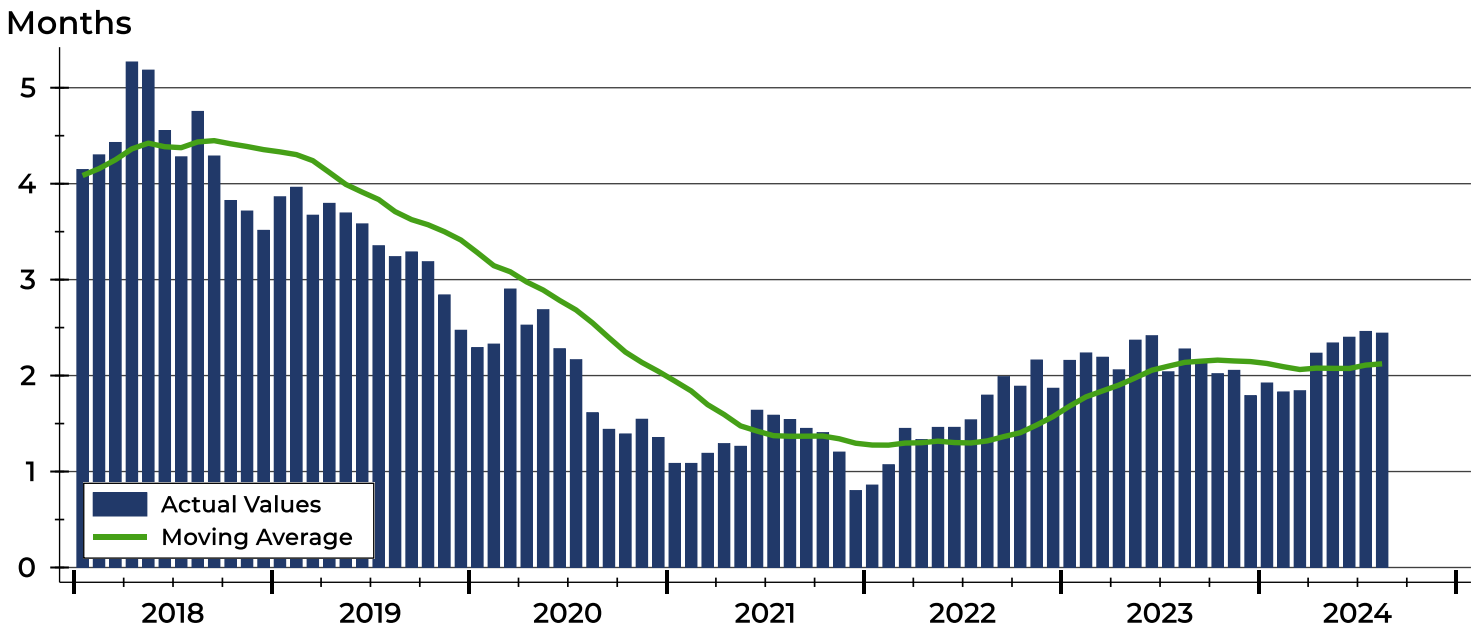
Pottawatomie County Months' Supply Analysis

Months' Supply by Month



Month	2022	2023	2024
January	0.9	2.2	1.9
February	1.1	2.2	1.8
March	1.4	2.2	1.8
April	1.3	2.1	2.2
May	1.5	2.4	2.3
June	1.5	2.4	2.4
July	1.5	2.0	2.5
August	1.8	2.3	2.4
September	2.0	2.1	
October	1.9	2.0	
November	2.2	2.1	
December	1.9	1.8	

History of Month's Supply





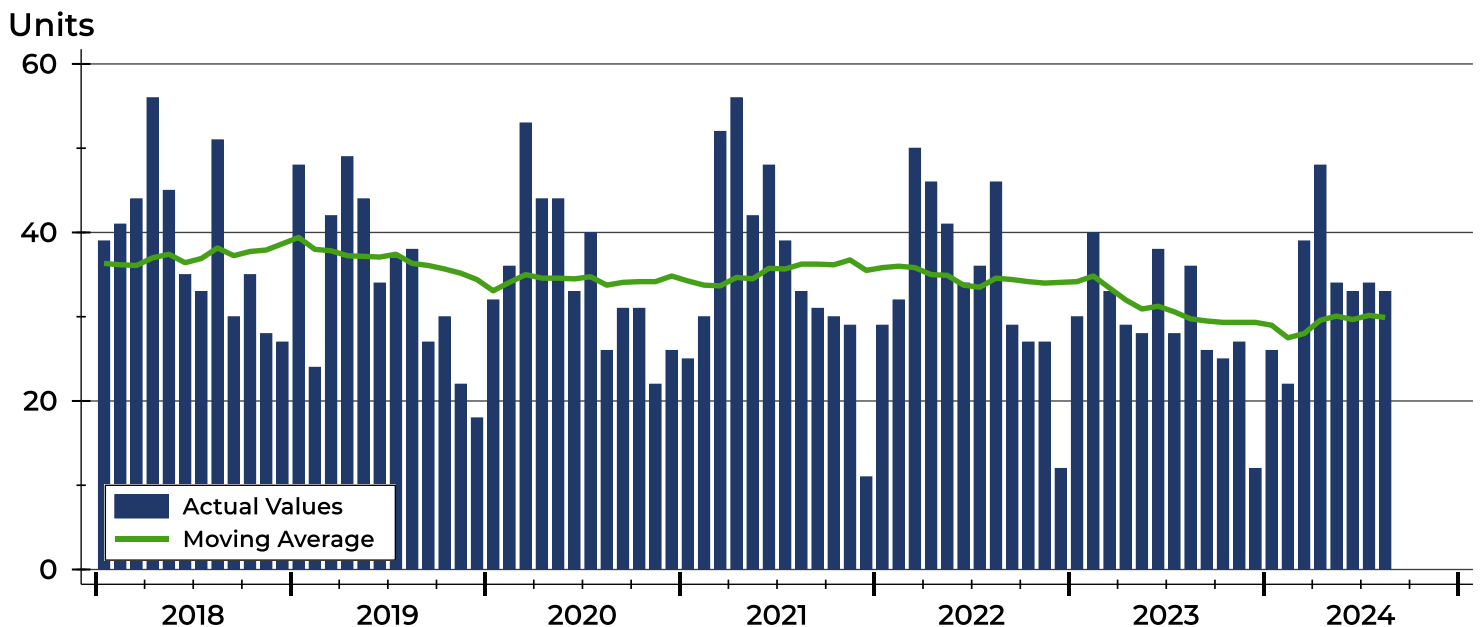
Pottawatomie County New Listings Analysis

Summary Statistics for New Listings		2024	August 2023	Change
Current Month	New Listings	33	36	-8.3%
	Volume (1,000s)	11,268	11,718	-3.8%
	Average List Price	341,450	325,497	4.9%
	Median List Price	325,000	290,000	12.1%
Year-to-Date	New Listings	269	262	2.7%
	Volume (1,000s)	96,275	91,814	4.9%
	Average List Price	357,898	350,437	2.1%
	Median List Price	335,000	335,000	0.0%

A total of 33 new listings were added in Pottawatomie County during August, down 8.3% from the same month in 2023. Year-to-date Pottawatomie County has seen 269 new listings.

The median list price of these homes was \$325,000 up from \$290,000 in 2023.

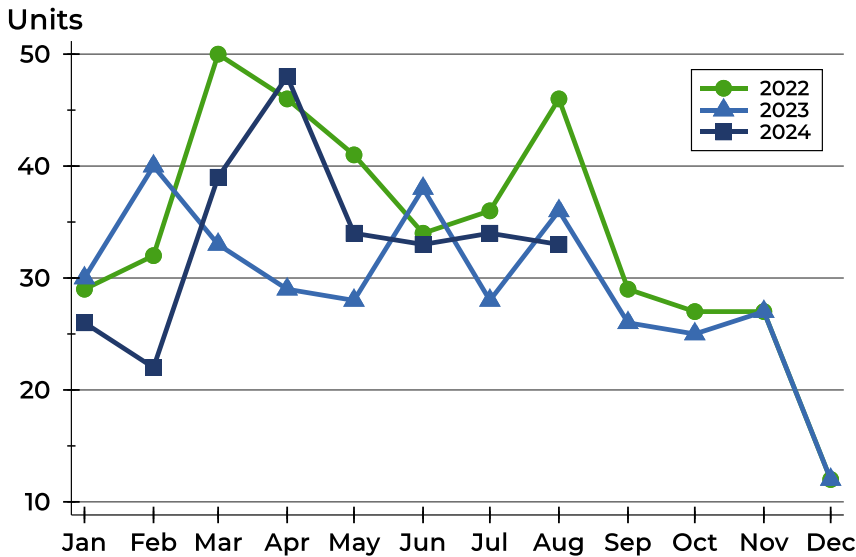
History of New Listings





Pottawatomie County New Listings Analysis

New Listings by Month



Month	2022	2023	2024
January	29	30	26
February	32	40	22
March	50	33	39
April	46	29	48
May	41	28	34
June	34	38	33
July	36	28	34
August	46	36	33
September	29	26	
October	27	25	
November	27	27	
December	12	12	

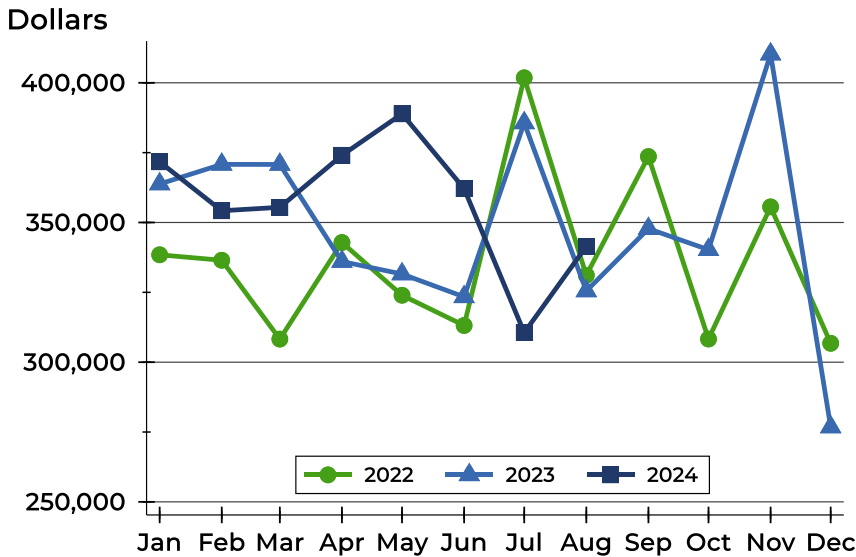
New Listings by Price Range

Price Range	New Listings		List Price		Days on Market		Price as % of Orig.	
	Number	Percent	Average	Median	Avg.	Med.	Avg.	Med.
Below \$25,000	0	0.0%	N/A	N/A	N/A	N/A	N/A	N/A
\$25,000-\$49,999	0	0.0%	N/A	N/A	N/A	N/A	N/A	N/A
\$50,000-\$99,999	2	6.1%	75,000	75,000	10	10	100.0%	100.0%
\$100,000-\$124,999	0	0.0%	N/A	N/A	N/A	N/A	N/A	N/A
\$125,000-\$149,999	1	3.0%	140,000	140,000	26	26	100.0%	100.0%
\$150,000-\$174,999	0	0.0%	N/A	N/A	N/A	N/A	N/A	N/A
\$175,000-\$199,999	2	6.1%	181,500	181,500	19	19	98.6%	98.6%
\$200,000-\$249,999	2	6.1%	242,400	242,400	21	21	99.0%	99.0%
\$250,000-\$299,999	9	27.3%	280,033	275,000	24	23	99.0%	100.0%
\$300,000-\$399,999	10	30.3%	354,690	347,450	15	13	99.6%	100.0%
\$400,000-\$499,999	5	15.2%	419,570	419,900	11	11	100.0%	100.0%
\$500,000-\$749,999	1	3.0%	615,000	615,000	21	21	100.0%	100.0%
\$750,000-\$999,999	0	0.0%	N/A	N/A	N/A	N/A	N/A	N/A
\$1,000,000 and up	1	3.0%	1,350,000	1,350,000	8	8	100.0%	100.0%



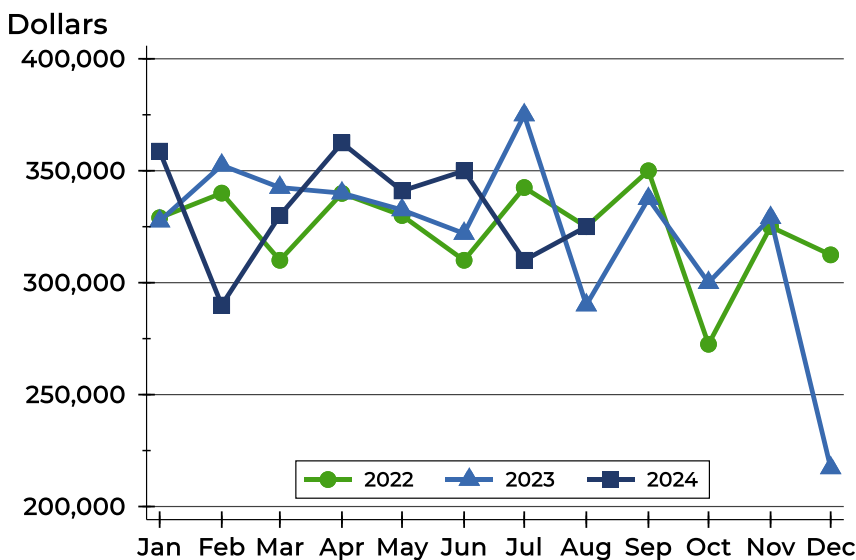
Pottawatomie County New Listings Analysis

Average Price



Month	2022	2023	2024
January	338,438	363,783	371,723
February	336,485	370,801	354,200
March	308,271	370,785	355,438
April	342,847	336,028	374,065
May	323,966	331,554	388,901
June	313,151	323,391	362,129
July	401,797	385,643	310,569
August	331,116	325,497	341,450
September	373,607	347,785	
October	308,297	340,256	
November	355,596	410,263	
December	306,771	276,792	

Median Price



Month	2022	2023	2024
January	329,000	327,500	358,750
February	340,000	352,450	290,000
March	310,000	342,500	330,000
April	339,900	340,000	362,450
May	330,000	332,500	341,000
June	310,000	321,950	349,950
July	342,500	374,900	310,000
August	325,000	290,000	325,000
September	350,000	337,500	
October	272,500	300,000	
November	325,000	329,000	
December	312,425	217,250	

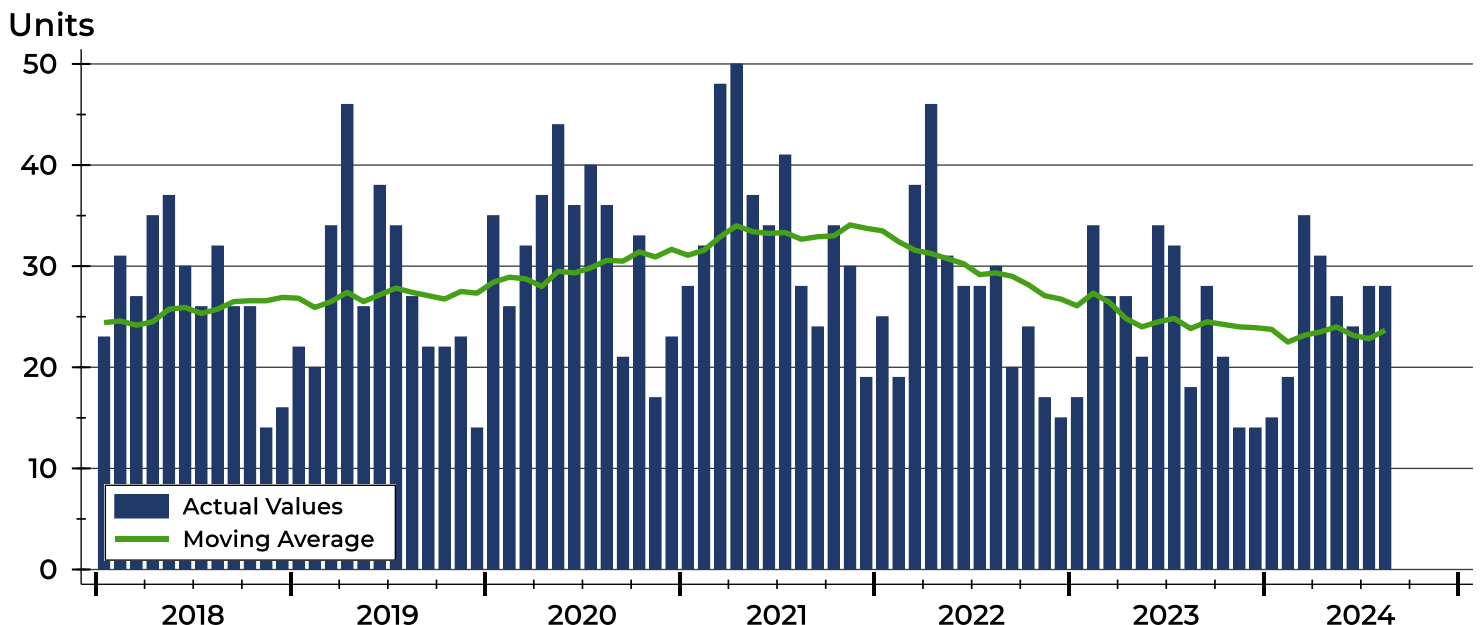


Pottawatomie County Contracts Written Analysis

Summary Statistics for Contracts Written		2024	August 2023	Change	2024	Year-to-Date 2023	Change
Contracts Written		28	18	55.6%	207	210	-1.4%
Volume (1,000s)		8,963	5,861	52.9%	72,478	67,391	7.5%
Average	Sale Price	320,100	325,628	-1.7%	350,134	320,908	9.1%
	Days on Market	53	33	60.6%	43	45	-4.4%
	Percent of Original	97.6%	96.0%	1.7%	97.7%	97.5%	0.2%
Median	Sale Price	339,950	332,000	2.4%	334,900	330,000	1.5%
	Days on Market	40	19	110.5%	19	15	26.7%
	Percent of Original	99.3%	98.1%	1.2%	98.7%	99.3%	-0.6%

A total of 28 contracts for sale were written in Pottawatomie County during the month of August, up from 18 in 2023. The median list price of these homes was \$339,950, up from \$332,000 the prior year. Half of the homes that went under contract in August were on the market less than 40 days, compared to 19 days in August 2023.

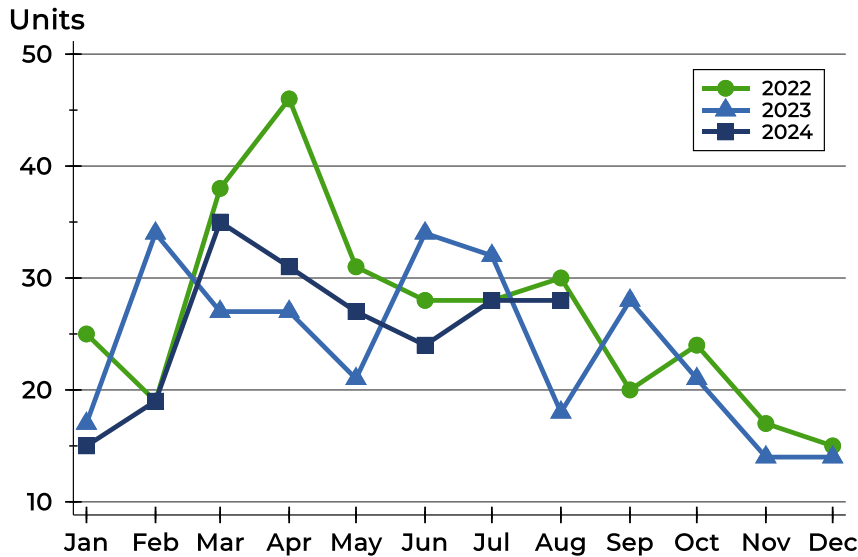
History of Contracts Written





Pottawatomie County Contracts Written Analysis

Contracts Written by Month



Month	2022	2023	2024
January	25	17	15
February	19	34	19
March	38	27	35
April	46	27	31
May	31	21	27
June	28	34	24
July	28	32	28
August	30	18	28
September	20	28	
October	24	21	
November	17	14	
December	15	14	

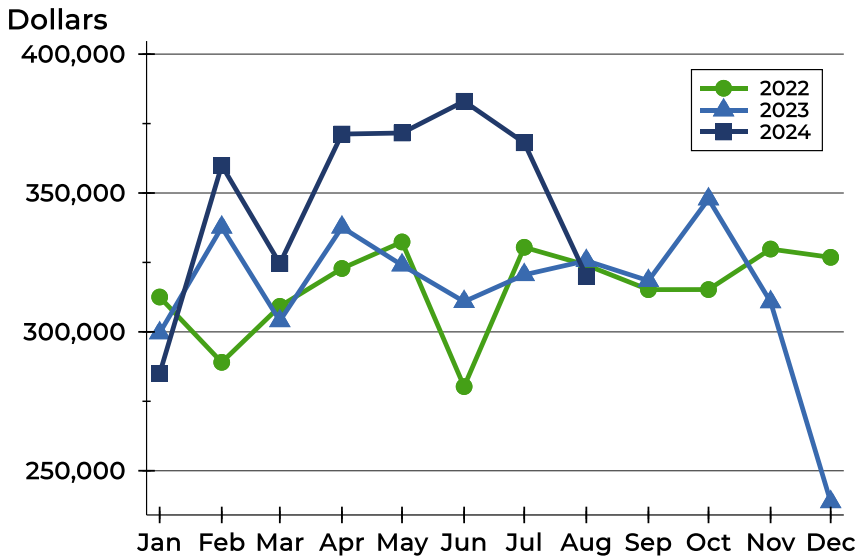
Contracts Written by Price Range

Price Range	Contracts Written		List Price		Days on Market		Price as % of Orig.	
	Number	Percent	Average	Median	Avg.	Med.	Avg.	Med.
Below \$25,000	0	0.0%	N/A	N/A	N/A	N/A	N/A	N/A
\$25,000-\$49,999	0	0.0%	N/A	N/A	N/A	N/A	N/A	N/A
\$50,000-\$99,999	2	7.1%	65,000	65,000	10	10	100.0%	100.0%
\$100,000-\$124,999	0	0.0%	N/A	N/A	N/A	N/A	N/A	N/A
\$125,000-\$149,999	0	0.0%	N/A	N/A	N/A	N/A	N/A	N/A
\$150,000-\$174,999	0	0.0%	N/A	N/A	N/A	N/A	N/A	N/A
\$175,000-\$199,999	1	3.6%	184,000	184,000	4	4	100.0%	100.0%
\$200,000-\$249,999	2	7.1%	242,450	242,450	17	17	96.8%	96.8%
\$250,000-\$299,999	6	21.4%	282,217	282,450	55	43	97.8%	99.1%
\$300,000-\$399,999	13	46.4%	355,123	359,900	61	58	97.3%	98.0%
\$400,000-\$499,999	3	10.7%	429,667	415,000	48	30	97.7%	100.0%
\$500,000-\$749,999	1	3.6%	565,000	565,000	148	148	94.5%	94.5%
\$750,000-\$999,999	0	0.0%	N/A	N/A	N/A	N/A	N/A	N/A
\$1,000,000 and up	0	0.0%	N/A	N/A	N/A	N/A	N/A	N/A



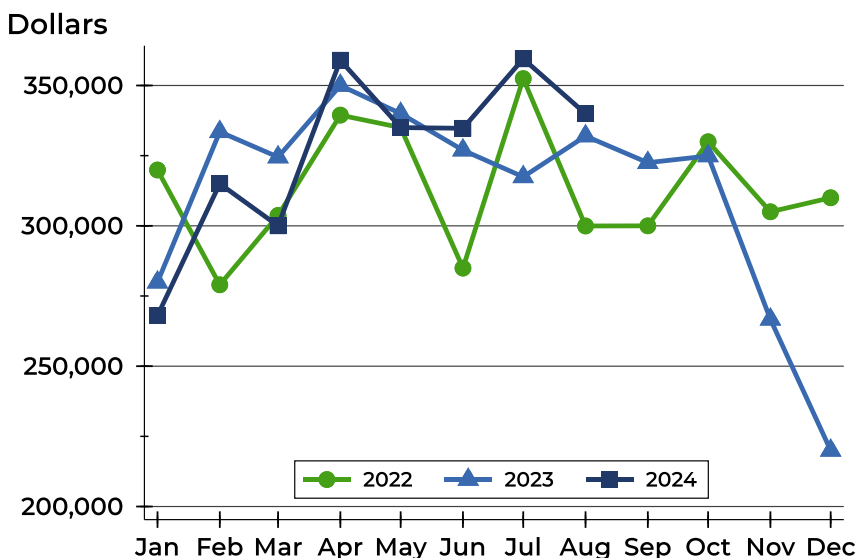
Pottawatomie County Contracts Written Analysis

Average Price



Month	2022	2023	2024
January	312,546	299,594	284,980
February	289,037	337,656	359,942
March	309,196	303,959	324,583
April	322,826	337,663	371,223
May	332,385	324,033	371,615
June	280,298	310,883	383,033
July	330,457	320,544	368,096
August	324,068	325,628	320,100
September	315,205	318,421	
October	315,234	347,819	
November	329,815	310,786	
December	326,840	238,786	

Median Price

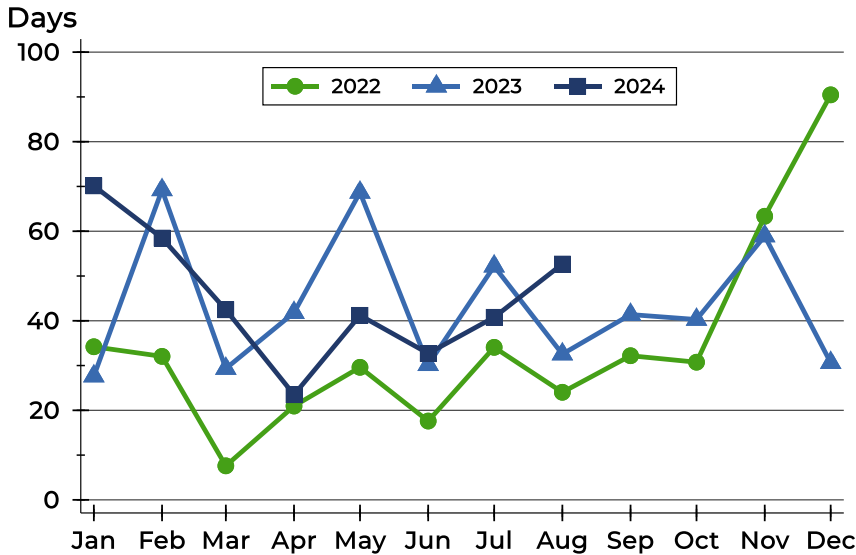


Month	2022	2023	2024
January	319,900	279,900	268,000
February	279,000	333,500	315,000
March	303,700	324,500	300,000
April	339,450	350,000	359,000
May	335,000	340,000	335,000
June	284,950	326,950	334,750
July	352,450	317,450	359,500
August	299,950	332,000	339,950
September	300,000	322,500	
October	329,950	324,900	
November	305,000	266,703	
December	310,000	220,000	



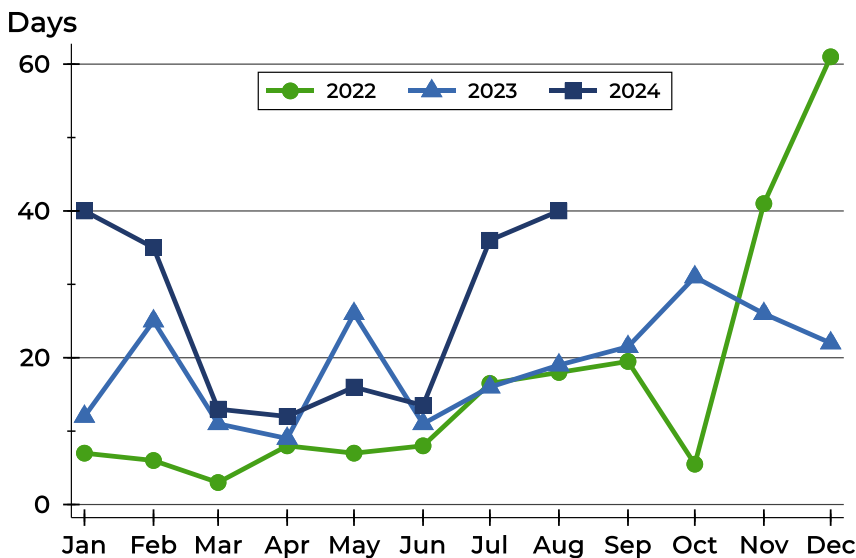
Pottawatomie County Contracts Written Analysis

Average DOM



Month	2022	2023	2024
January	34	28	70
February	32	69	58
March	8	29	42
April	21	42	23
May	30	69	41
June	18	30	33
July	34	52	41
August	24	33	53
September	32	41	
October	31	40	
November	63	59	
December	90	31	

Median DOM



Month	2022	2023	2024
January	7	12	40
February	6	25	35
March	3	11	13
April	8	9	12
May	7	26	16
June	8	11	14
July	17	16	36
August	18	19	40
September	20	22	
October	6	31	
November	41	26	
December	61	22	



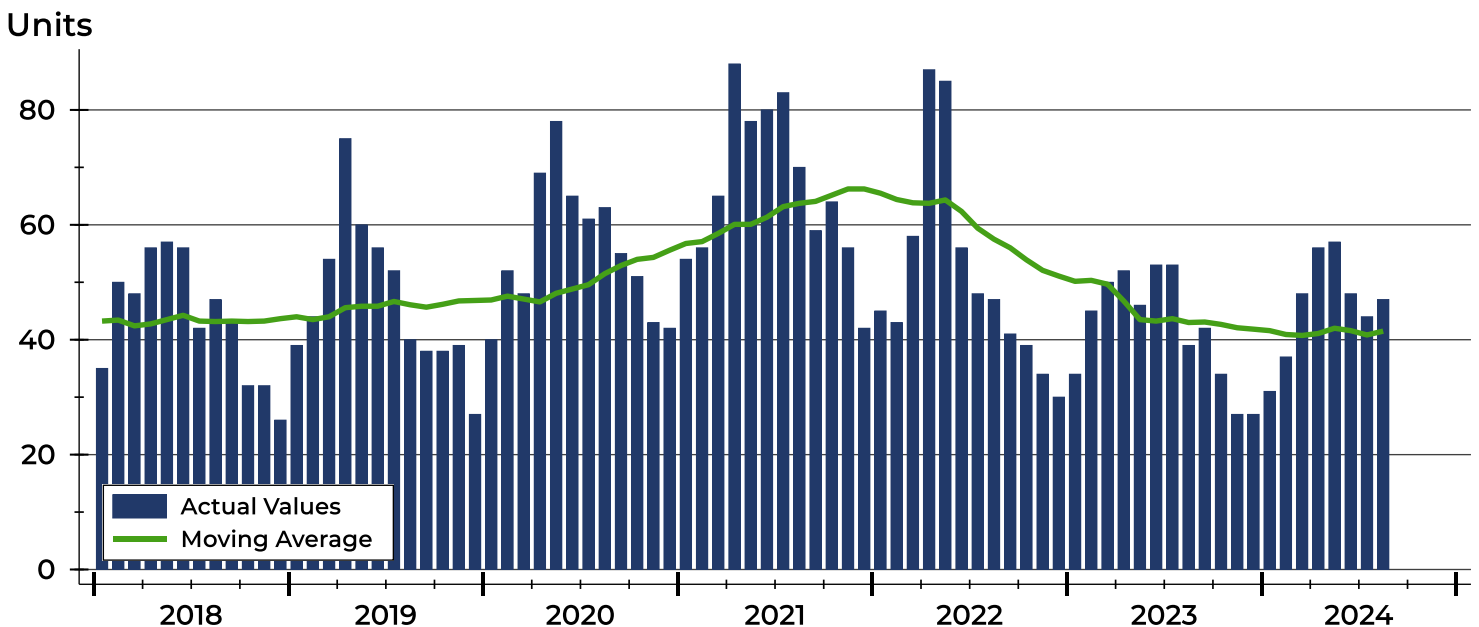
Pottawatomie County Pending Contracts Analysis

Summary Statistics for Pending Contracts		2024	End of August 2023	Change
Pending Contracts		47	39	20.5%
Volume (1,000s)		15,660	13,132	19.3%
Average	List Price	333,200	336,728	-1.0%
	Days on Market	47	38	23.7%
	Percent of Original	99.1%	97.4%	1.7%
Median	List Price	345,000	325,000	6.2%
	Days on Market	41	21	95.2%
	Percent of Original	100.0%	100.0%	0.0%

A total of 47 listings in Pottawatomie County had contracts pending at the end of August, up from 39 contracts pending at the end of August 2023.

Pending contracts reflect listings with a contract in place at the end of the month. In contrast, contracts written measures the number of listings put under contract during the month.

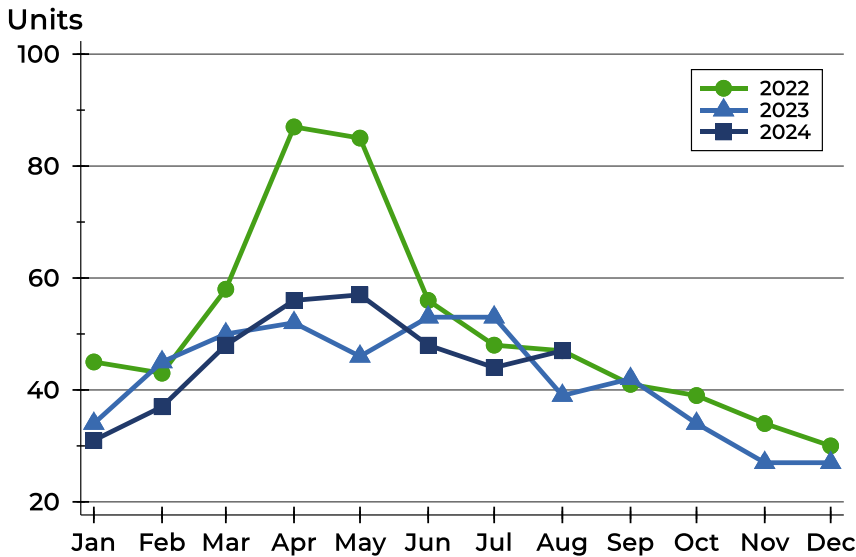
History of Pending Contracts





Pottawatomie County Pending Contracts Analysis

Pending Contracts by Month



Month	2022	2023	2024
January	45	34	31
February	43	45	37
March	58	50	48
April	87	52	56
May	85	46	57
June	56	53	48
July	48	53	44
August	47	39	47
September	41	42	
October	39	34	
November	34	27	
December	30	27	

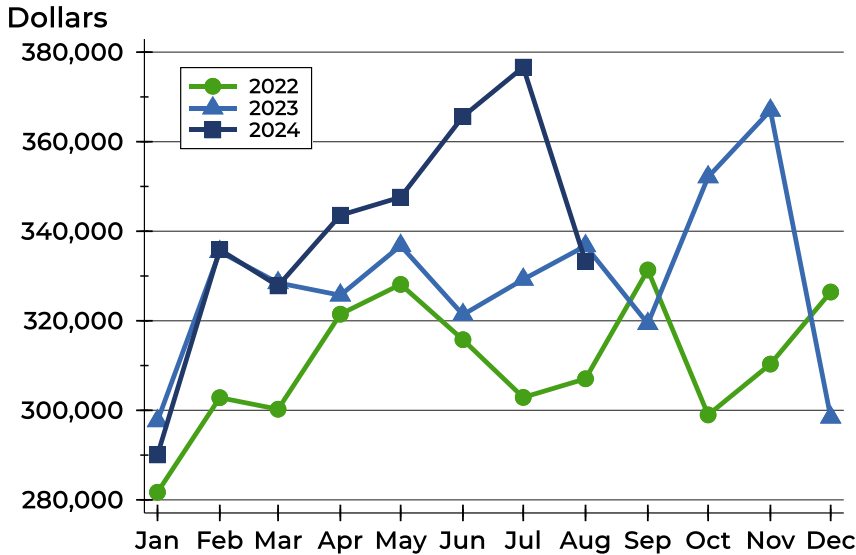
Pending Contracts by Price Range

Price Range	Pending Contracts		List Price		Days on Market		Price as % of Orig.	
	Number	Percent	Average	Median	Avg.	Med.	Avg.	Med.
Below \$25,000	0	0.0%	N/A	N/A	N/A	N/A	N/A	N/A
\$25,000-\$49,999	0	0.0%	N/A	N/A	N/A	N/A	N/A	N/A
\$50,000-\$99,999	2	4.3%	65,000	65,000	10	10	100.0%	100.0%
\$100,000-\$124,999	0	0.0%	N/A	N/A	N/A	N/A	N/A	N/A
\$125,000-\$149,999	2	4.3%	135,000	135,000	62	62	95.2%	95.2%
\$150,000-\$174,999	0	0.0%	N/A	N/A	N/A	N/A	N/A	N/A
\$175,000-\$199,999	1	2.1%	184,000	184,000	4	4	100.0%	100.0%
\$200,000-\$249,999	6	12.8%	236,517	244,900	30	20	100.0%	100.0%
\$250,000-\$299,999	8	17.0%	277,850	274,900	47	41	102.1%	100.0%
\$300,000-\$399,999	18	38.3%	356,478	362,450	51	50	97.7%	99.3%
\$400,000-\$499,999	6	12.8%	433,167	425,000	44	37	100.0%	100.0%
\$500,000-\$749,999	4	8.5%	604,725	582,450	82	72	97.7%	98.2%
\$750,000-\$999,999	0	0.0%	N/A	N/A	N/A	N/A	N/A	N/A
\$1,000,000 and up	0	0.0%	N/A	N/A	N/A	N/A	N/A	N/A



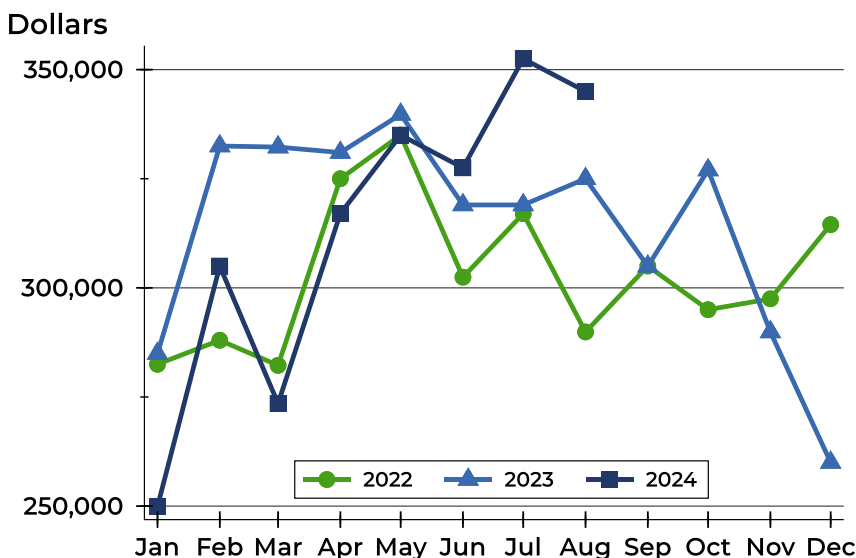
Pottawatomie County Pending Contracts Analysis

Average Price



Month	2022	2023	2024
January	281,700	297,634	290,045
February	302,832	335,418	335,886
March	300,248	328,472	327,794
April	321,471	325,708	343,570
May	328,125	336,778	347,611
June	315,771	321,353	365,630
July	302,886	329,236	376,651
August	307,048	336,728	333,200
September	331,346	319,350	-
October	298,977	352,121	-
November	310,334	366,993	-
December	326,423	298,444	-

Median Price

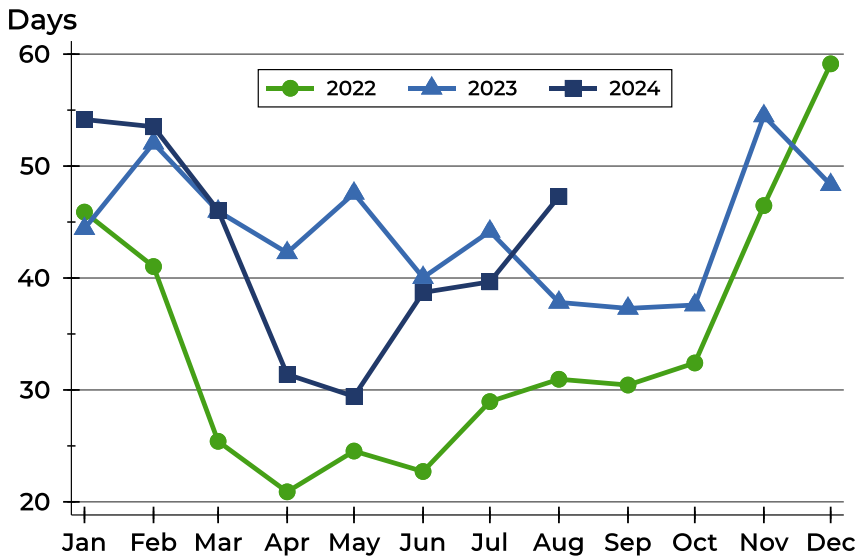


Month	2022	2023	2024
January	282,500	284,950	249,900
February	288,000	332,500	305,000
March	282,250	332,250	273,500
April	325,000	331,000	317,000
May	335,000	339,750	335,000
June	302,450	319,000	327,500
July	317,000	319,000	352,475
August	289,900	325,000	345,000
September	305,000	304,950	-
October	295,000	327,000	-
November	297,500	289,900	-
December	314,500	260,000	-



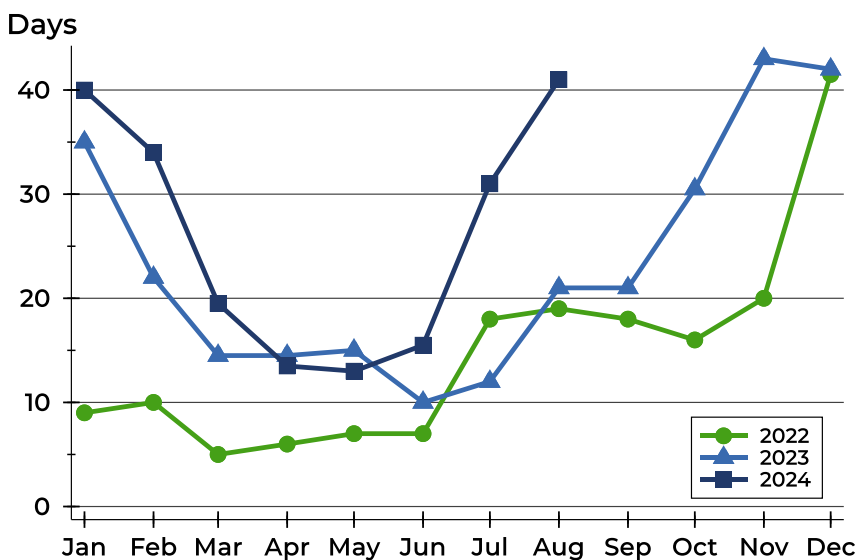
Pottawatomie County Pending Contracts Analysis

Average DOM



Month	2022	2023	2024
January	46	44	54
February	41	52	54
March	25	46	46
April	21	42	31
May	25	48	29
June	23	40	39
July	29	44	40
August	31	38	47
September	30	37	
October	32	38	
November	46	54	
December	59	48	

Median DOM



Month	2022	2023	2024
January	9	35	40
February	10	22	34
March	5	15	20
April	6	15	14
May	7	15	13
June	7	10	16
July	18	12	31
August	19	21	41
September	18	21	
October	16	31	
November	20	43	
December	42	42	