



# Pottawatomie County Housing Report



## Market Overview

### Pottawatomie County Home Sales Rose in January

Total home sales in Pottawatomie County rose by 7.1% last month to 15 units, compared to 14 units in January 2024. Total sales volume was \$5.7 million, up 50.6% from a year earlier.

The median sale price in January was \$365,000, up from \$250,000 a year earlier. Homes that sold in January were typically on the market for 41 days and sold for 98.9% of their list prices.

### Pottawatomie County Active Listings Down at End of January

The total number of active listings in Pottawatomie County at the end of January was 34 units, down from 46 at the same point in 2024. This represents a 1.4 months' supply of homes available for sale. The median list price of homes on the market at the end of January was \$309,750.

During January, a total of 17 contracts were written up from 16 in January 2024. At the end of the month, there were 26 contracts still pending.

## Report Contents

- Summary Statistics – Page 2
- Closed Listing Analysis – Page 3
- Active Listings Analysis – Page 7
- Months' Supply Analysis – Page 11
- New Listings Analysis – Page 12
- Contracts Written Analysis – Page 15
- Pending Contracts Analysis – Page 19

## Contact Information

Margaret Pendleton, Association Executive  
 Flint Hills Association of REALTORS®  
 205 S. Seth Child Road  
 Manhattan, KS 66502  
 785-776-1203  
[ae@flinthillsrealtors.net](mailto:ae@flinthillsrealtors.net)  
[www.flinthillsrealtors.net](http://www.flinthillsrealtors.net)



## Pottawatomie County Summary Statistics

January MLS Statistics Three-year History		Current Month			Year-to-Date		
		2025	2024	2023	2025	2024	2023
<b>Home Sales</b>		<b>15</b>	<b>14</b>	<b>15</b>	<b>15</b>	<b>14</b>	<b>15</b>
Change from prior year		7.1%	-6.7%	-28.6%	7.1%	-6.7%	-28.6%
<b>Active Listings</b>		<b>34</b>	<b>46</b>	<b>59</b>	<b>N/A</b>	<b>N/A</b>	<b>N/A</b>
Change from prior year		-26.1%	-22.0%	103.4%			
<b>Months' Supply</b>		<b>1.4</b>	<b>1.9</b>	<b>2.2</b>	<b>N/A</b>	<b>N/A</b>	<b>N/A</b>
Change from prior year		-26.3%	-13.6%	144.4%			
<b>New Listings</b>		<b>10</b>	<b>26</b>	<b>30</b>	<b>10</b>	<b>26</b>	<b>30</b>
Change from prior year		-61.5%	-13.3%	3.4%	-61.5%	-13.3%	3.4%
<b>Contracts Written</b>		<b>17</b>	<b>16</b>	<b>17</b>	<b>17</b>	<b>16</b>	<b>17</b>
Change from prior year		6.3%	-5.9%	-32.0%	6.3%	-5.9%	-32.0%
<b>Pending Contracts</b>		<b>26</b>	<b>31</b>	<b>34</b>	<b>N/A</b>	<b>N/A</b>	<b>N/A</b>
Change from prior year		-16.1%	-8.8%	-24.4%			
<b>Sales Volume (1,000s)</b>		<b>5,697</b>	<b>3,784</b>	<b>5,213</b>	<b>5,697</b>	<b>3,784</b>	<b>5,213</b>
Change from prior year		50.6%	-27.4%	-12.8%	50.6%	-27.4%	-12.8%
<b>Average</b>	<b>Sale Price</b>	<b>379,793</b>	<b>270,281</b>	<b>347,548</b>	<b>379,793</b>	<b>270,281</b>	<b>347,548</b>
	Change from prior year	40.5%	-22.2%	22.1%	40.5%	-22.2%	22.1%
	<b>List Price of Actives</b>	<b>396,028</b>	<b>404,365</b>	<b>346,498</b>	<b>N/A</b>	<b>N/A</b>	<b>N/A</b>
	Change from prior year	-2.1%	16.7%	11.0%			
	<b>Days on Market</b>	<b>51</b>	<b>53</b>	<b>62</b>	<b>51</b>	<b>53</b>	<b>62</b>
Change from prior year	-3.8%	-14.5%	55.0%	-3.8%	-14.5%	55.0%	
<b>Percent of List</b>	<b>98.0%</b>	<b>98.8%</b>	<b>98.4%</b>	<b>98.0%</b>	<b>98.8%</b>	<b>98.4%</b>	
Change from prior year	-0.8%	0.4%	-0.9%	-0.8%	0.4%	-0.9%	
<b>Percent of Original</b>	<b>96.8%</b>	<b>95.7%</b>	<b>94.2%</b>	<b>96.8%</b>	<b>95.7%</b>	<b>94.2%</b>	
Change from prior year	1.1%	1.6%	-3.7%	1.1%	1.6%	-3.7%	
<b>Median</b>	<b>Sale Price</b>	<b>365,000</b>	<b>250,000</b>	<b>315,000</b>	<b>365,000</b>	<b>250,000</b>	<b>315,000</b>
	Change from prior year	46.0%	-20.6%	18.6%	46.0%	-20.6%	18.6%
	<b>List Price of Actives</b>	<b>309,750</b>	<b>346,200</b>	<b>334,000</b>	<b>N/A</b>	<b>N/A</b>	<b>N/A</b>
	Change from prior year	-10.5%	3.7%	2.8%			
	<b>Days on Market</b>	<b>41</b>	<b>37</b>	<b>22</b>	<b>41</b>	<b>37</b>	<b>22</b>
Change from prior year	10.8%	68.2%	-8.3%	10.8%	68.2%	-8.3%	
<b>Percent of List</b>	<b>98.9%</b>	<b>99.5%</b>	<b>100.0%</b>	<b>98.9%</b>	<b>99.5%</b>	<b>100.0%</b>	
Change from prior year	-0.6%	-0.5%	0.0%	-0.6%	-0.5%	0.0%	
<b>Percent of Original</b>	<b>98.1%</b>	<b>96.8%</b>	<b>98.6%</b>	<b>98.1%</b>	<b>96.8%</b>	<b>98.6%</b>	
Change from prior year	1.3%	-1.8%	-1.4%	1.3%	-1.8%	-1.4%	

Note: Year-to-date statistics cannot be calculated for Active Listings, Months' Supply and Pending Contracts.



## Pottawatomie County Closed Listings Analysis

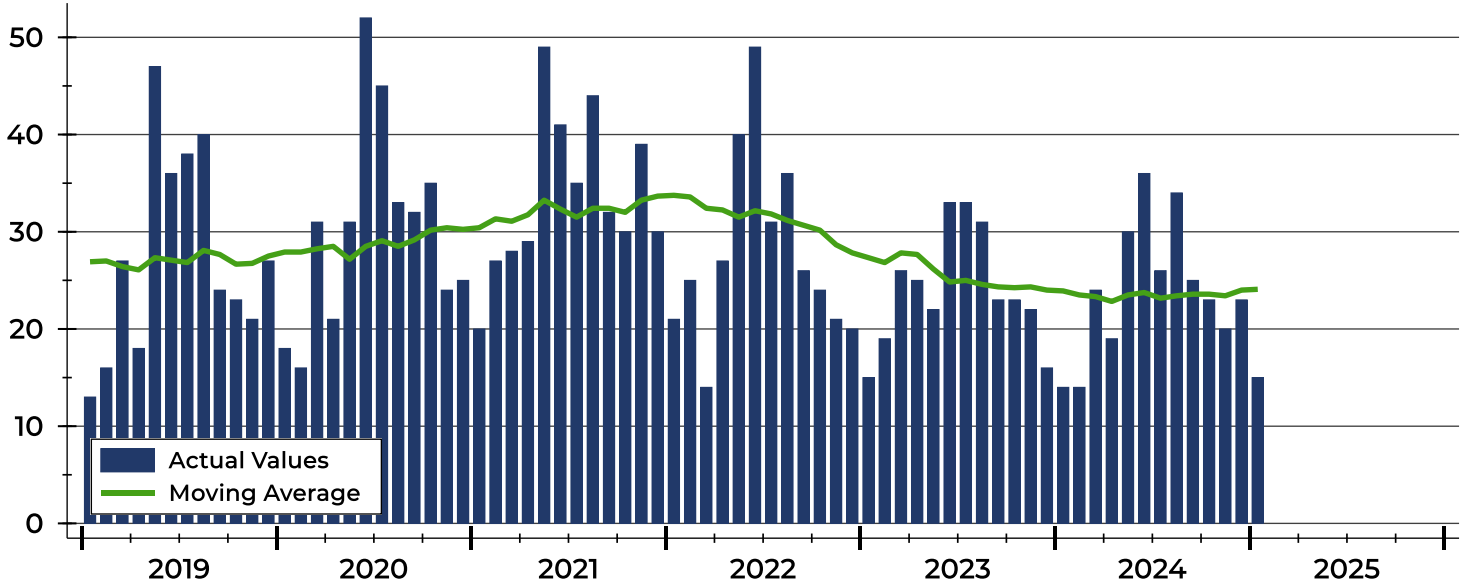
Summary Statistics for Closed Listings		2025	January 2024	Change	2025	Year-to-Date 2024	Change
Closed Listings		15	14	7.1%	15	14	7.1%
Volume (1,000s)		5,697	3,784	50.6%	5,697	3,784	50.6%
Months' Supply		1.4	1.9	-26.3%	N/A	N/A	N/A
Average	Sale Price	379,793	270,281	40.5%	379,793	270,281	40.5%
	Days on Market	51	53	-3.8%	51	53	-3.8%
	Percent of List	98.0%	98.8%	-0.8%	98.0%	98.8%	-0.8%
	Percent of Original	96.8%	95.7%	1.1%	96.8%	95.7%	1.1%
Median	Sale Price	365,000	250,000	46.0%	365,000	250,000	46.0%
	Days on Market	41	37	10.8%	41	37	10.8%
	Percent of List	98.9%	99.5%	-0.6%	98.9%	99.5%	-0.6%
	Percent of Original	98.1%	96.8%	1.3%	98.1%	96.8%	1.3%

A total of 15 homes sold in Pottawatomie County in January, up from 14 units in January 2024. Total sales volume rose to \$5.7 million compared to \$3.8 million in the previous year.

The median sales price in January was \$365,000, up 46.0% compared to the prior year. Median days on market was 41 days, up from 19 days in December, and up from 37 in January 2024.

## History of Closed Listings

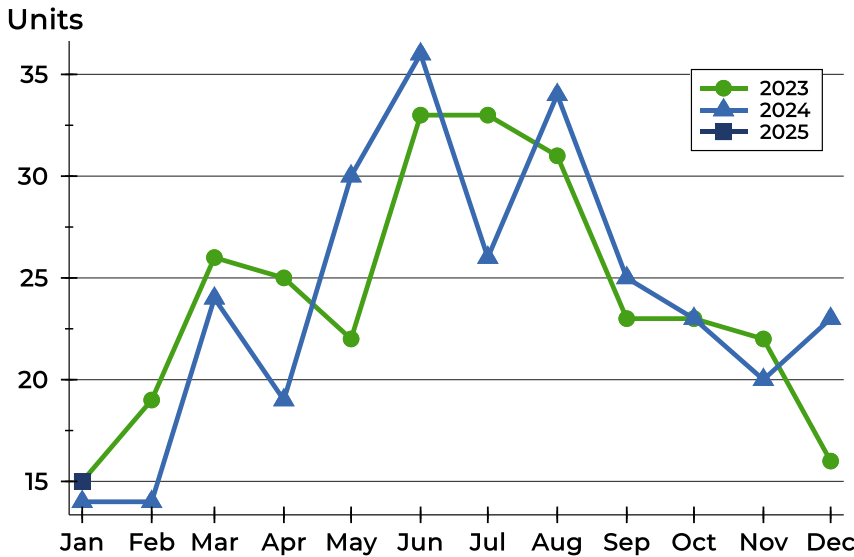
Units





## Pottawatomie County Closed Listings Analysis

### Closed Listings by Month



Month	2023	2024	2025
<b>January</b>	15	14	<b>15</b>
<b>February</b>	19	14	
<b>March</b>	26	24	
<b>April</b>	25	19	
<b>May</b>	22	30	
<b>June</b>	33	36	
<b>July</b>	33	26	
<b>August</b>	31	34	
<b>September</b>	23	25	
<b>October</b>	23	23	
<b>November</b>	22	20	
<b>December</b>	16	23	

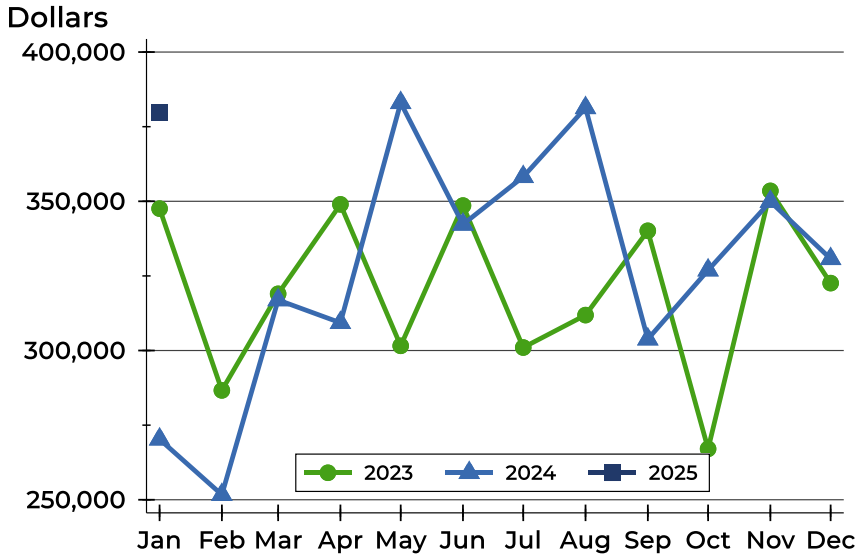
### Closed Listings by Price Range

Price Range	Sales		Months' Supply	Sale Price		Days on Market		Price as % of List		Price as % of Orig.	
	Number	Percent		Average	Median	Avg.	Med.	Avg.	Med.	Avg.	Med.
Below \$25,000	0	0.0%	N/A	N/A	N/A	N/A	N/A	N/A	N/A	N/A	N/A
\$25,000-\$49,999	0	0.0%	N/A	N/A	N/A	N/A	N/A	N/A	N/A	N/A	N/A
\$50,000-\$99,999	1	6.7%	0.0	97,000	97,000	15	15	94.6%	94.6%	94.6%	94.6%
\$100,000-\$124,999	0	0.0%	N/A	N/A	N/A	N/A	N/A	N/A	N/A	N/A	N/A
\$125,000-\$149,999	0	0.0%	N/A	N/A	N/A	N/A	N/A	N/A	N/A	N/A	N/A
\$150,000-\$174,999	1	6.7%	5.1	157,000	157,000	23	23	95.2%	95.2%	95.2%	95.2%
\$175,000-\$199,999	0	0.0%	N/A	N/A	N/A	N/A	N/A	N/A	N/A	N/A	N/A
\$200,000-\$249,999	0	0.0%	N/A	N/A	N/A	N/A	N/A	N/A	N/A	N/A	N/A
\$250,000-\$299,999	4	26.7%	2.1	264,725	265,000	55	43	98.4%	98.5%	97.2%	97.3%
\$300,000-\$399,999	3	20.0%	1.0	359,667	365,000	88	82	97.7%	97.4%	96.4%	96.1%
\$400,000-\$499,999	3	20.0%	0.5	442,000	431,000	16	5	99.7%	100.0%	99.7%	100.0%
\$500,000-\$749,999	2	13.3%	2.4	574,500	574,500	62	62	100.0%	100.0%	99.0%	99.0%
\$750,000-\$999,999	1	6.7%	4.5	830,000	830,000	66	66	94.9%	94.9%	87.4%	87.4%
\$1,000,000 and up	0	0.0%	N/A	N/A	N/A	N/A	N/A	N/A	N/A	N/A	N/A



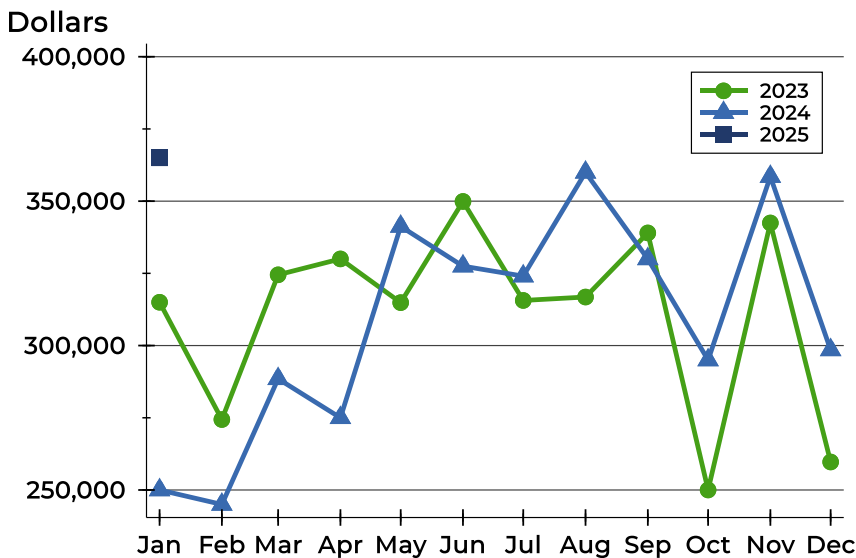
# Pottawatomie County Closed Listings Analysis

## Average Price



Month	2023	2024	2025
January	347,548	270,281	<b>379,793</b>
February	286,647	251,689	
March	319,004	316,938	
April	348,976	309,311	
May	301,576	383,004	
June	348,576	342,261	
July	301,005	358,219	
August	311,874	381,306	
September	340,115	303,804	
October	267,050	326,926	
November	353,491	349,902	
December	322,588	330,731	

## Median Price

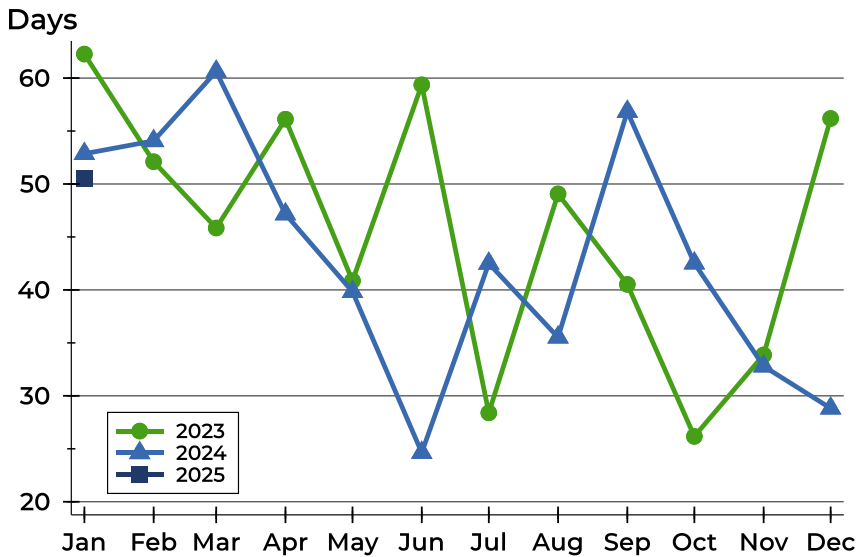


Month	2023	2024	2025
January	315,000	250,000	<b>365,000</b>
February	274,400	245,000	
March	324,500	288,500	
April	330,000	275,000	
May	314,875	341,250	
June	349,900	327,500	
July	315,626	324,050	
August	316,806	359,975	
September	339,000	330,000	
October	250,000	295,000	
November	342,450	358,500	
December	259,703	298,500	



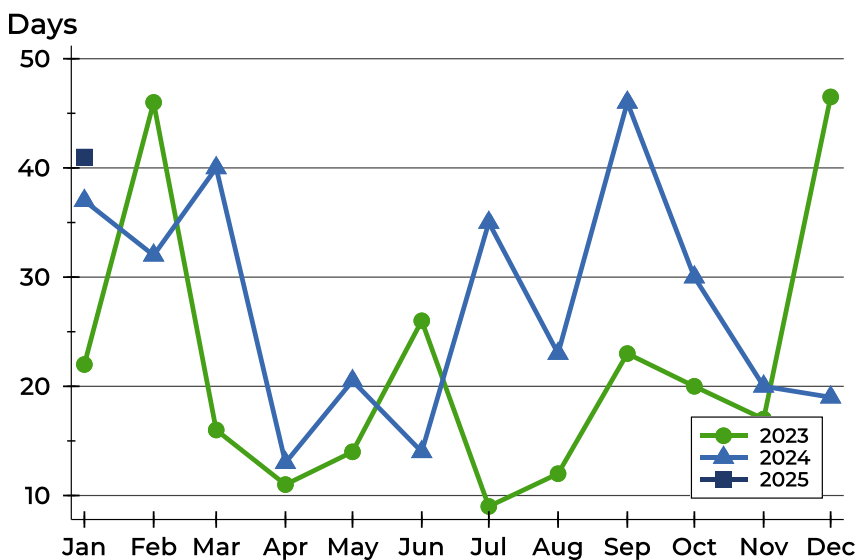
# Pottawatomie County Closed Listings Analysis

## Average DOM



Month	2023	2024	2025
January	62	53	51
February	52	54	
March	46	61	
April	56	47	
May	41	40	
June	59	25	
July	28	43	
August	49	36	
September	41	57	
October	26	43	
November	34	33	
December	56	29	

## Median DOM



Month	2023	2024	2025
January	22	37	41
February	46	32	
March	16	40	
April	11	13	
May	14	21	
June	26	14	
July	9	35	
August	12	23	
September	23	46	
October	20	30	
November	17	20	
December	47	19	



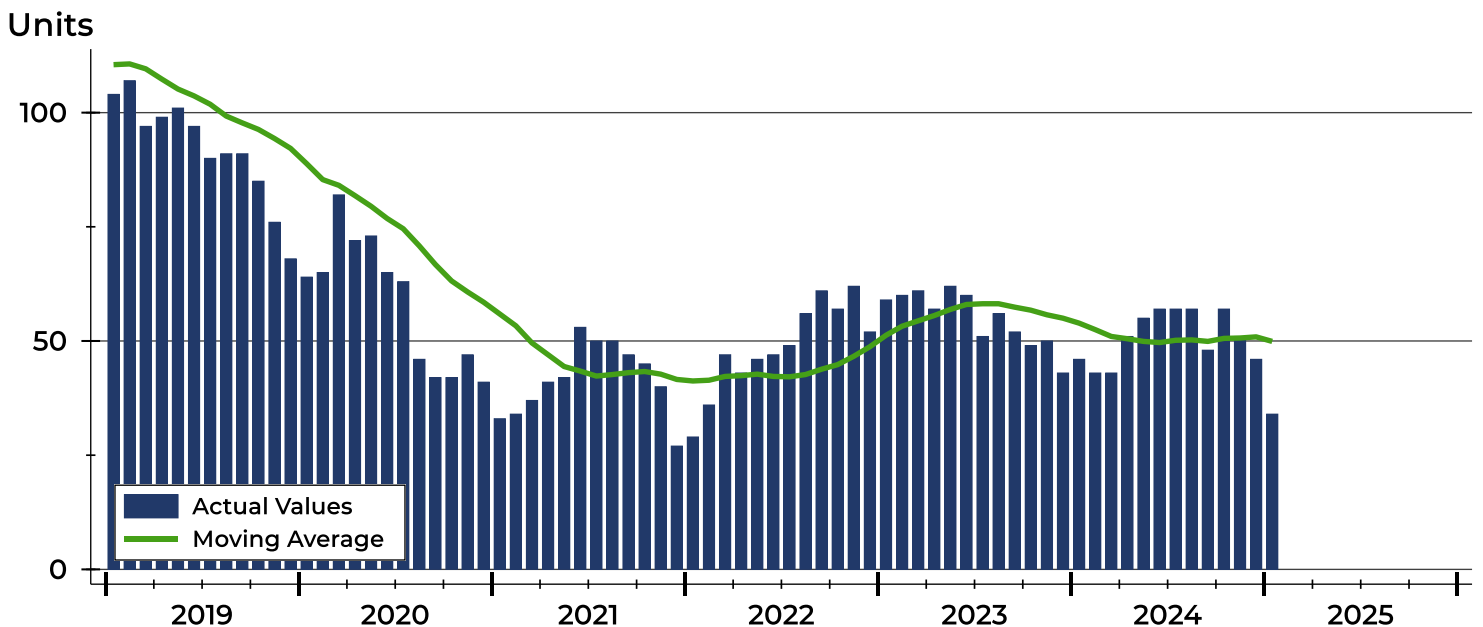
## Pottawatomie County Active Listings Analysis

Summary Statistics for Active Listings		2025	End of January 2024	Change
Active Listings		<b>34</b>	46	-26.1%
Volume (1,000s)		<b>13,465</b>	18,601	-27.6%
Months' Supply		<b>1.4</b>	1.9	-26.3%
Average	List Price	<b>396,028</b>	404,365	-2.1%
	Days on Market	<b>81</b>	65	24.6%
	Percent of Original	<b>98.2%</b>	98.8%	-0.6%
Median	List Price	<b>309,750</b>	346,200	-10.5%
	Days on Market	<b>68</b>	59	15.3%
	Percent of Original	<b>100.0%</b>	100.0%	0.0%

A total of 34 homes were available for sale in Pottawatomie County at the end of January. This represents a 1.4 months' supply of active listings.

The median list price of homes on the market at the end of January was \$309,750, down 10.5% from 2024. The typical time on market for active listings was 68 days, up from 59 days a year earlier.

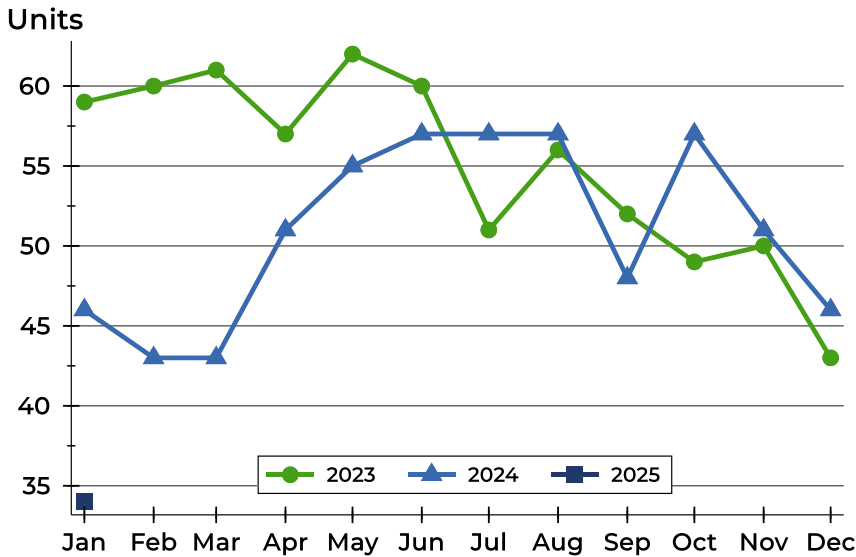
## History of Active Listings





## Pottawatomie County Active Listings Analysis

### Active Listings by Month



Month	2023	2024	2025
<b>January</b>	59	46	<b>34</b>
<b>February</b>	60	43	
<b>March</b>	61	43	
<b>April</b>	57	51	
<b>May</b>	62	55	
<b>June</b>	60	57	
<b>July</b>	51	57	
<b>August</b>	56	57	
<b>September</b>	52	48	
<b>October</b>	49	57	
<b>November</b>	50	51	
<b>December</b>	43	46	

### Active Listings by Price Range

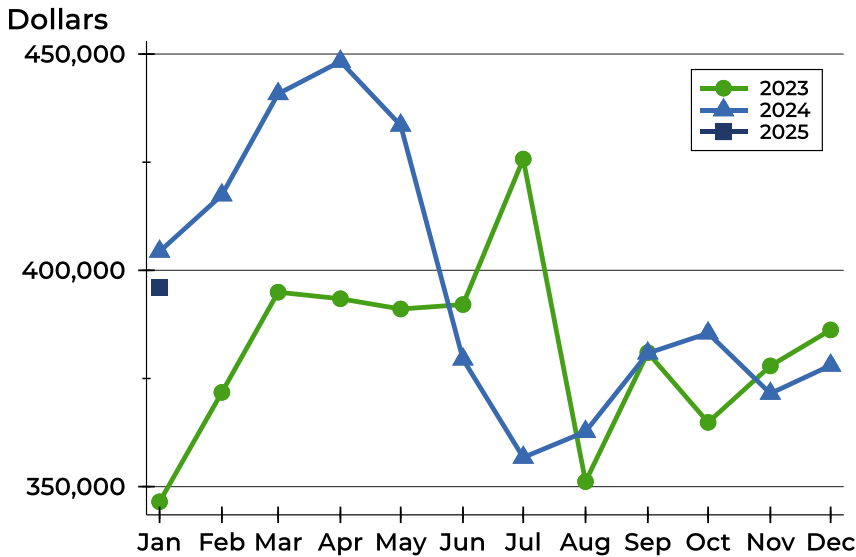
Price Range	Active Listings		Months' Supply	List Price		Days on Market		Price as % of Orig.	
	Number	Percent		Average	Median	Avg.	Med.	Avg.	Med.
Below \$25,000	0	0.0%	N/A	N/A	N/A	N/A	N/A	N/A	N/A
\$25,000-\$49,999	0	0.0%	N/A	N/A	N/A	N/A	N/A	N/A	N/A
\$50,000-\$99,999	0	0.0%	0.0	N/A	N/A	N/A	N/A	N/A	N/A
\$100,000-\$124,999	1	2.9%	N/A	105,000	105,000	66	66	87.5%	87.5%
\$125,000-\$149,999	1	2.9%	N/A	125,000	125,000	12	12	100.0%	100.0%
\$150,000-\$174,999	3	8.8%	5.1	164,267	162,900	80	74	99.0%	100.0%
\$175,000-\$199,999	1	2.9%	N/A	195,000	195,000	60	60	100.0%	100.0%
\$200,000-\$249,999	3	8.8%	N/A	238,633	242,500	63	74	100.0%	100.0%
\$250,000-\$299,999	7	20.6%	2.1	285,221	287,000	45	45	98.7%	100.0%
\$300,000-\$399,999	8	23.5%	1.0	320,100	322,400	125	104	97.9%	99.3%
\$400,000-\$499,999	2	5.9%	0.5	430,000	430,000	70	70	100.0%	100.0%
\$500,000-\$749,999	5	14.7%	2.4	647,980	635,000	46	43	100.0%	100.0%
\$750,000-\$999,999	2	5.9%	4.5	887,000	887,000	193	193	91.0%	91.0%
\$1,000,000 and up	1	2.9%	N/A	1,400,000	1,400,000	113	113	100.0%	100.0%





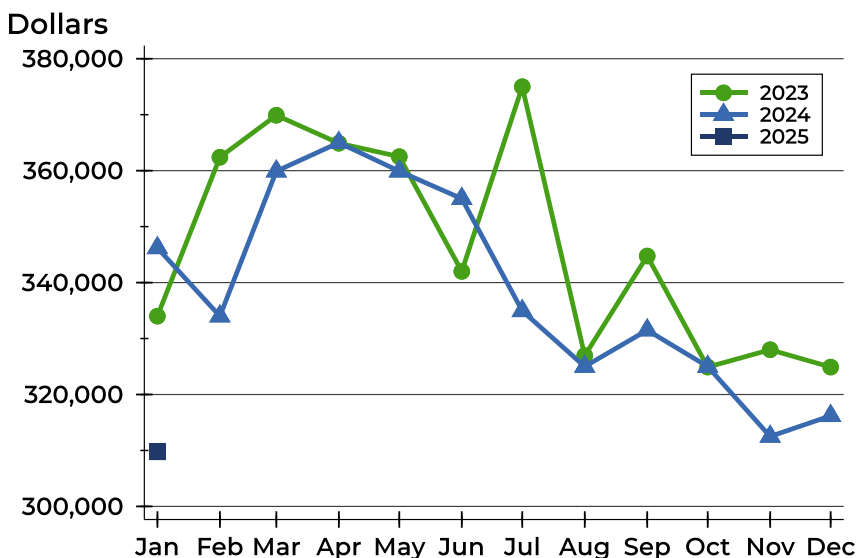
# Pottawatomie County Active Listings Analysis

## Average Price



Month	2023	2024	2025
January	346,498	404,365	<b>396,028</b>
February	371,789	417,395	
March	394,956	440,809	
April	393,429	448,288	
May	391,065	433,521	
June	392,093	379,446	
July	425,723	356,743	
August	351,161	362,711	
September	380,967	380,836	
October	364,845	385,474	
November	377,906	371,523	
December	386,226	378,028	

## Median Price

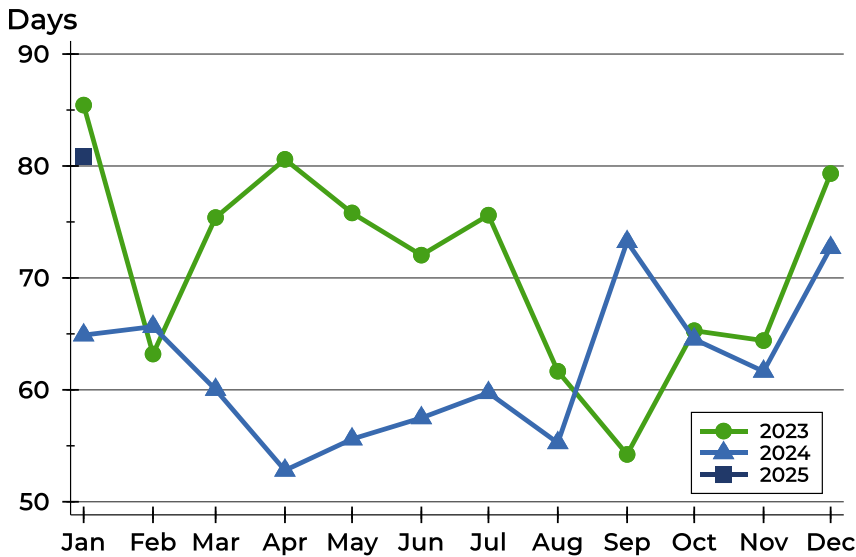


Month	2023	2024	2025
January	334,000	346,200	<b>309,750</b>
February	362,400	334,000	
March	369,900	359,900	
April	364,900	365,000	
May	362,500	359,900	
June	342,000	355,000	
July	375,000	334,950	
August	326,950	325,000	
September	344,750	331,500	
October	324,900	325,000	
November	328,000	312,500	
December	324,900	316,200	



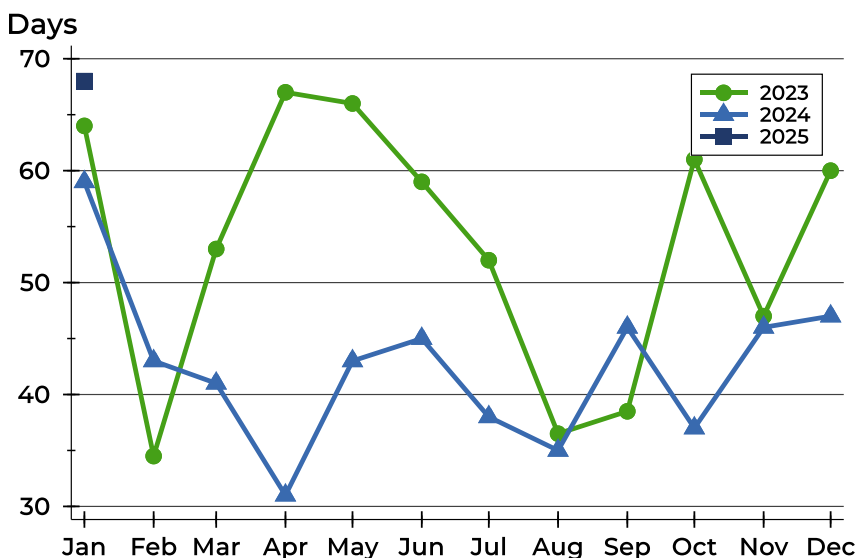
## Pottawatomie County Active Listings Analysis

### Average DOM



Month	2023	2024	2025
January	85	65	<b>81</b>
February	63	66	
March	75	60	
April	81	53	
May	76	56	
June	72	57	
July	76	60	
August	62	55	
September	54	73	
October	65	65	
November	64	62	
December	79	73	

### Median DOM

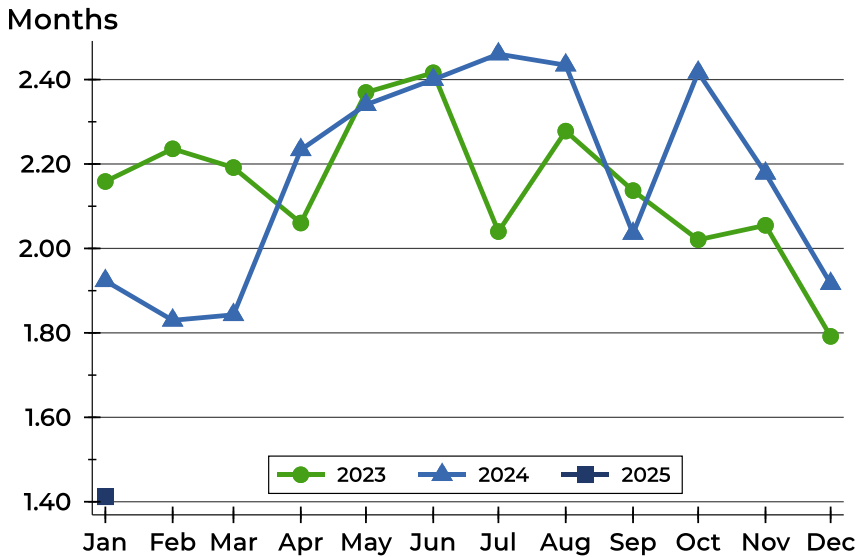


Month	2023	2024	2025
January	64	59	<b>68</b>
February	35	43	
March	53	41	
April	67	31	
May	66	43	
June	59	45	
July	52	38	
August	37	35	
September	39	46	
October	61	37	
November	47	46	
December	60	47	



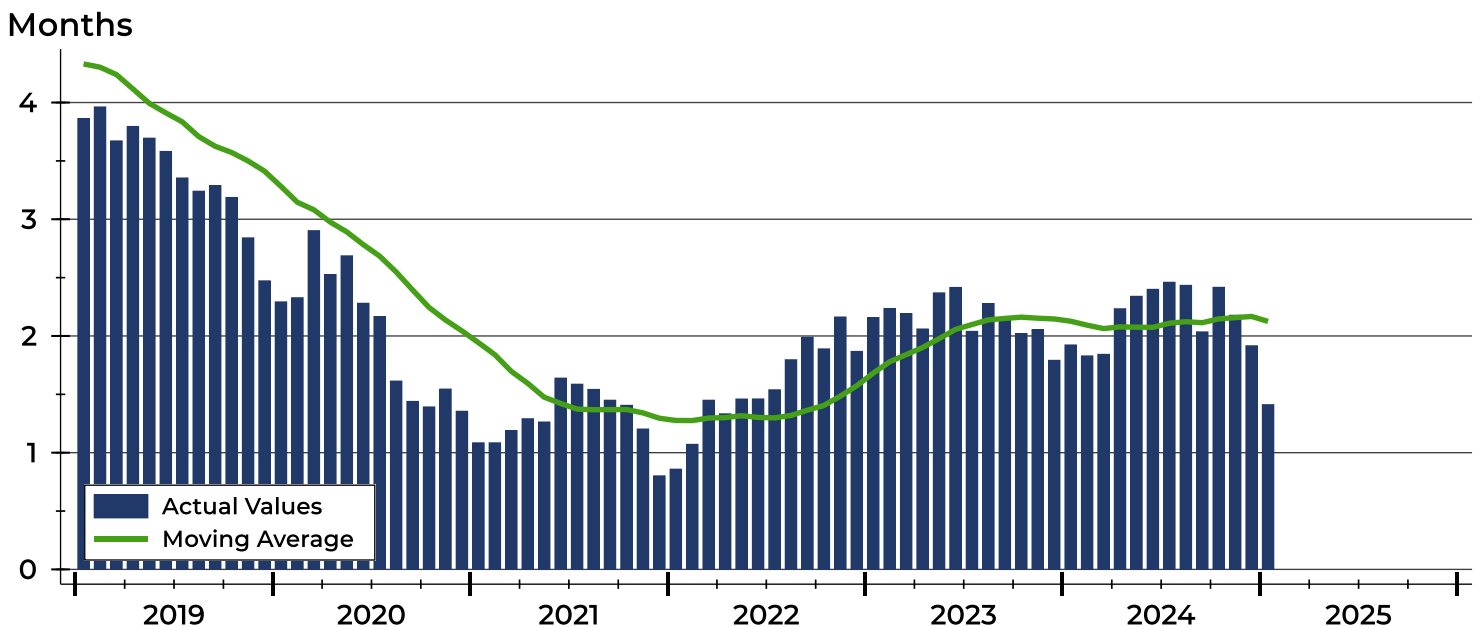
# Pottawatomie County Months' Supply Analysis

## Months' Supply by Month



Month	2023	2024	2025
January	2.2	1.9	1.4
February	2.2	1.8	
March	2.2	1.8	
April	2.1	2.2	
May	2.4	2.3	
June	2.4	2.4	
July	2.0	2.5	
August	2.3	2.4	
September	2.1	2.0	
October	2.0	2.4	
November	2.1	2.2	
December	1.8	1.9	

## History of Month's Supply





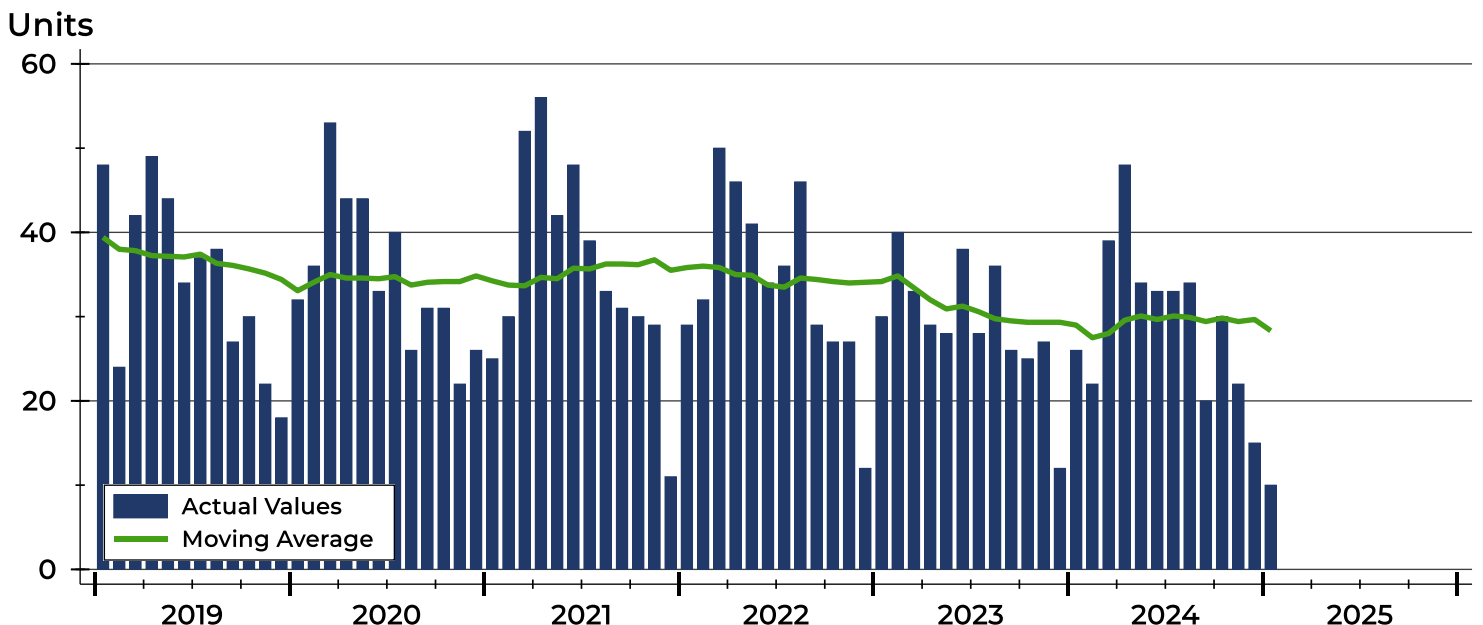
## Pottawatomie County New Listings Analysis

Summary Statistics for New Listings		2025	January 2024	Change
Current Month	New Listings	<b>10</b>	26	-61.5%
	Volume (1,000s)	<b>3,902</b>	9,665	-59.6%
	Average List Price	<b>390,160</b>	371,723	5.0%
	Median List Price	<b>314,950</b>	358,750	-12.2%
Year-to-Date	New Listings	<b>10</b>	26	-61.5%
	Volume (1,000s)	<b>3,902</b>	9,665	-59.6%
	Average List Price	<b>390,160</b>	371,723	5.0%
	Median List Price	<b>314,950</b>	358,750	-12.2%

A total of 10 new listings were added in Pottawatomie County during January, down 61.5% from the same month in 2024.

The median list price of these homes was \$314,950 down from \$358,750 in 2024.

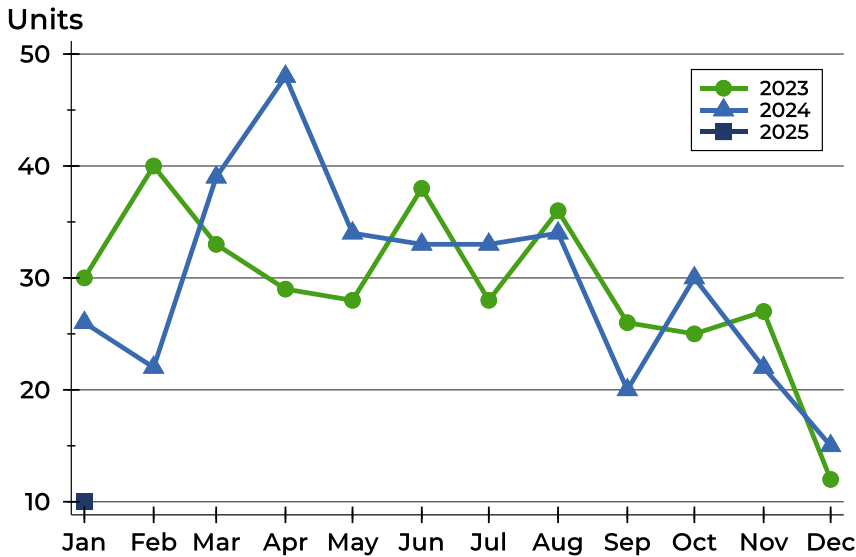
## History of New Listings





## Pottawatomie County New Listings Analysis

### New Listings by Month



Month	2023	2024	2025
<b>January</b>	30	26	<b>10</b>
<b>February</b>	40	22	
<b>March</b>	33	39	
<b>April</b>	29	48	
<b>May</b>	28	34	
<b>June</b>	38	33	
<b>July</b>	28	33	
<b>August</b>	36	34	
<b>September</b>	26	20	
<b>October</b>	25	30	
<b>November</b>	27	22	
<b>December</b>	12	15	

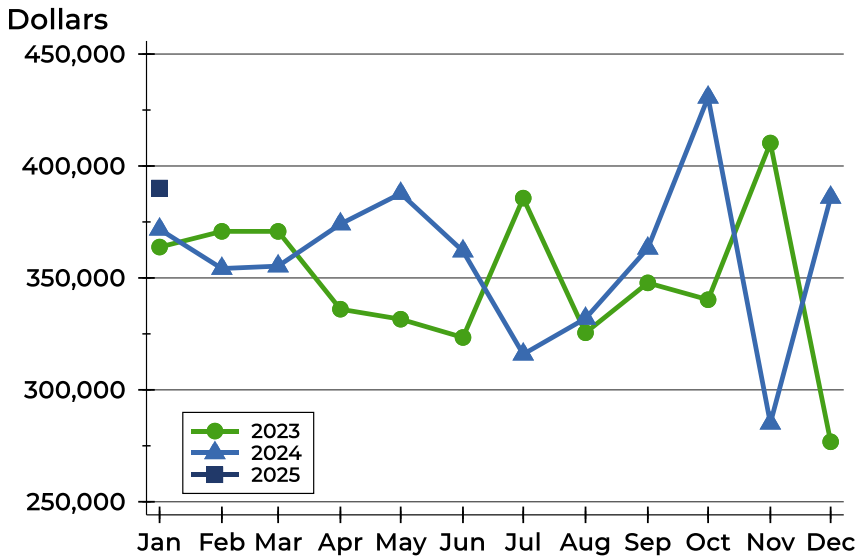
### New Listings by Price Range

Price Range	New Listings		List Price		Days on Market		Price as % of Orig.	
	Number	Percent	Average	Median	Avg.	Med.	Avg.	Med.
Below \$25,000	0	0.0%	N/A	N/A	N/A	N/A	N/A	N/A
\$25,000-\$49,999	0	0.0%	N/A	N/A	N/A	N/A	N/A	N/A
\$50,000-\$99,999	0	0.0%	N/A	N/A	N/A	N/A	N/A	N/A
\$100,000-\$124,999	0	0.0%	N/A	N/A	N/A	N/A	N/A	N/A
\$125,000-\$149,999	0	0.0%	N/A	N/A	N/A	N/A	N/A	N/A
\$150,000-\$174,999	0	0.0%	N/A	N/A	N/A	N/A	N/A	N/A
\$175,000-\$199,999	0	0.0%	N/A	N/A	N/A	N/A	N/A	N/A
\$200,000-\$249,999	0	0.0%	N/A	N/A	N/A	N/A	N/A	N/A
\$250,000-\$299,999	4	40.0%	282,975	285,950	14	12	99.6%	100.0%
\$300,000-\$399,999	2	20.0%	314,950	314,950	10	10	100.2%	100.2%
\$400,000-\$499,999	2	20.0%	442,450	442,450	3	3	99.5%	99.5%
\$500,000-\$749,999	2	20.0%	627,450	627,450	21	21	100.0%	100.0%
\$750,000-\$999,999	0	0.0%	N/A	N/A	N/A	N/A	N/A	N/A
\$1,000,000 and up	0	0.0%	N/A	N/A	N/A	N/A	N/A	N/A



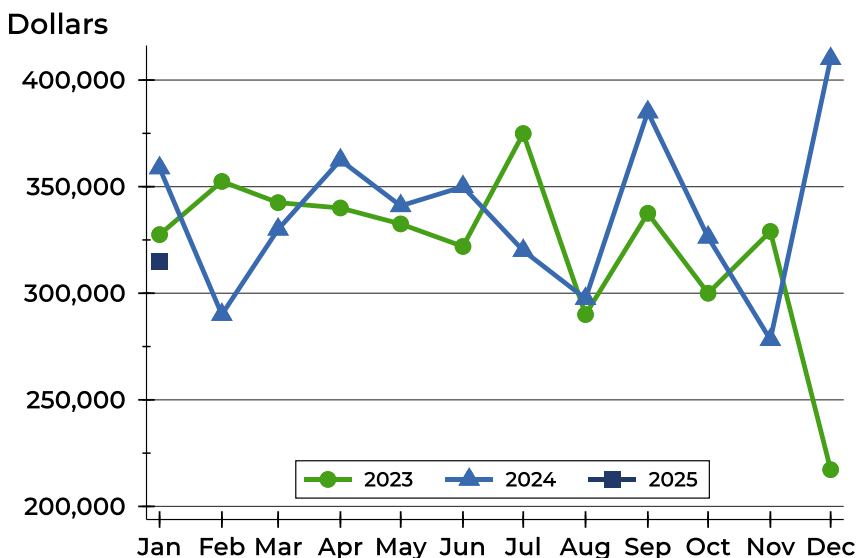
## Pottawatomie County New Listings Analysis

### Average Price



Month	2023	2024	2025
January	363,783	371,723	<b>390,160</b>
February	370,801	354,200	
March	370,785	355,285	
April	336,028	374,065	
May	331,554	387,699	
June	323,391	361,974	
July	385,643	315,900	
August	325,497	331,882	
September	347,785	363,213	
October	340,256	430,667	
November	410,263	285,058	
December	276,792	385,960	

### Median Price



Month	2023	2024	2025
January	327,500	358,750	<b>314,950</b>
February	352,450	290,000	
March	342,500	330,000	
April	340,000	362,450	
May	332,500	341,000	
June	321,950	349,950	
July	374,900	320,000	
August	290,000	297,475	
September	337,500	385,000	
October	300,000	326,250	
November	329,000	278,200	
December	217,250	410,000	



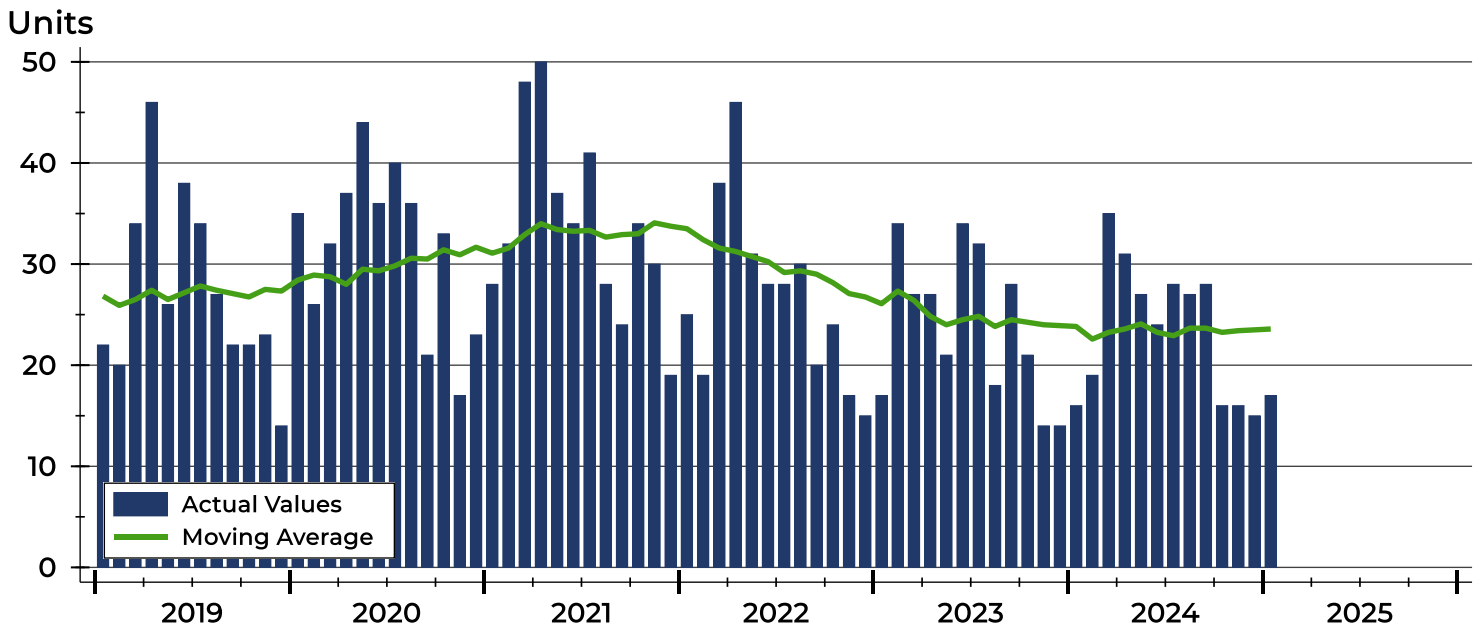
# Pottawatomie County Contracts Written Analysis

Summary Statistics for Contracts Written		January 2025			Year-to-Date 2025		
		2025	2024	Change	2025	2024	Change
Contracts Written		17	16	6.3%	17	16	6.3%
Volume (1,000s)		6,509	4,685	38.9%	6,509	4,685	38.9%
Average	Sale Price	382,859	292,788	30.8%	382,859	292,788	30.8%
	Days on Market	45	66	-31.8%	45	66	-31.8%
	Percent of Original	99.1%	98.7%	0.4%	99.1%	98.7%	0.4%
Median	Sale Price	380,000	296,500	28.2%	380,000	296,500	28.2%
	Days on Market	34	32	6.3%	34	32	6.3%
	Percent of Original	100.0%	99.1%	0.9%	100.0%	99.1%	0.9%

A total of 17 contracts for sale were written in Pottawatomie County during the month of January, up from 16 in 2024. The median list price of these homes was \$380,000, up from \$296,500 the prior year.

Half of the homes that went under contract in January were on the market less than 34 days, compared to 32 days in January 2024.

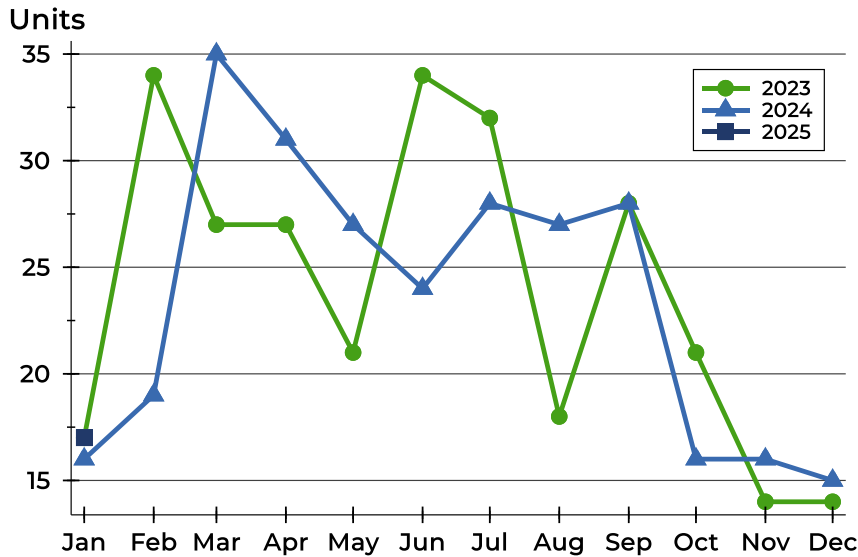
## History of Contracts Written





## Pottawatomie County Contracts Written Analysis

### Contracts Written by Month



Month	2023	2024	2025
<b>January</b>	17	16	<b>17</b>
<b>February</b>	34	19	
<b>March</b>	27	35	
<b>April</b>	27	31	
<b>May</b>	21	27	
<b>June</b>	34	24	
<b>July</b>	32	28	
<b>August</b>	18	27	
<b>September</b>	28	28	
<b>October</b>	21	16	
<b>November</b>	14	16	
<b>December</b>	14	15	

### Contracts Written by Price Range

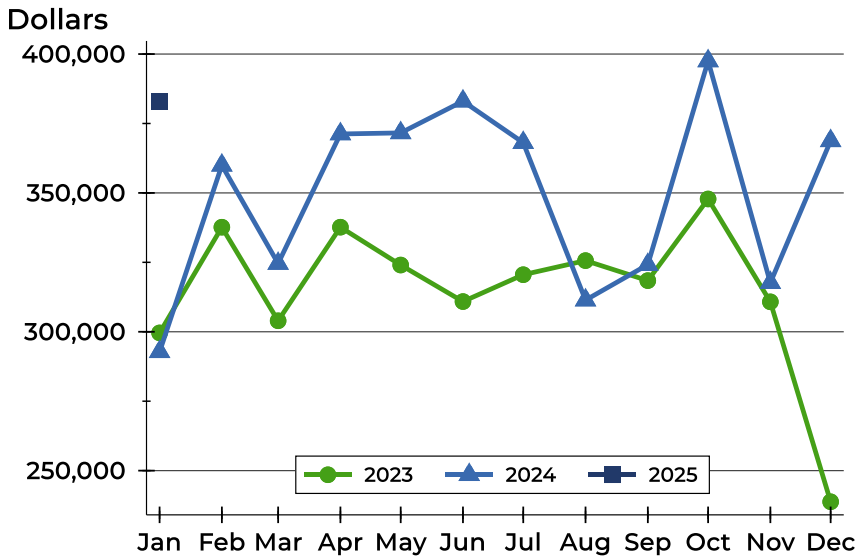
Price Range	Contracts Written		List Price		Days on Market		Price as % of Orig.	
	Number	Percent	Average	Median	Avg.	Med.	Avg.	Med.
Below \$25,000	0	0.0%	N/A	N/A	N/A	N/A	N/A	N/A
\$25,000-\$49,999	0	0.0%	N/A	N/A	N/A	N/A	N/A	N/A
\$50,000-\$99,999	0	0.0%	N/A	N/A	N/A	N/A	N/A	N/A
\$100,000-\$124,999	0	0.0%	N/A	N/A	N/A	N/A	N/A	N/A
\$125,000-\$149,999	0	0.0%	N/A	N/A	N/A	N/A	N/A	N/A
\$150,000-\$174,999	0	0.0%	N/A	N/A	N/A	N/A	N/A	N/A
\$175,000-\$199,999	1	5.9%	189,000	189,000	90	90	100.0%	100.0%
\$200,000-\$249,999	1	5.9%	215,000	215,000	99	99	95.6%	95.6%
\$250,000-\$299,999	3	17.6%	285,000	285,000	38	25	98.8%	100.0%
\$300,000-\$399,999	5	29.4%	345,940	329,900	43	34	99.4%	100.0%
\$400,000-\$499,999	5	29.4%	428,980	415,000	22	31	99.1%	100.0%
\$500,000-\$749,999	2	11.8%	687,500	687,500	70	70	100.0%	100.0%
\$750,000-\$999,999	0	0.0%	N/A	N/A	N/A	N/A	N/A	N/A
\$1,000,000 and up	0	0.0%	N/A	N/A	N/A	N/A	N/A	N/A





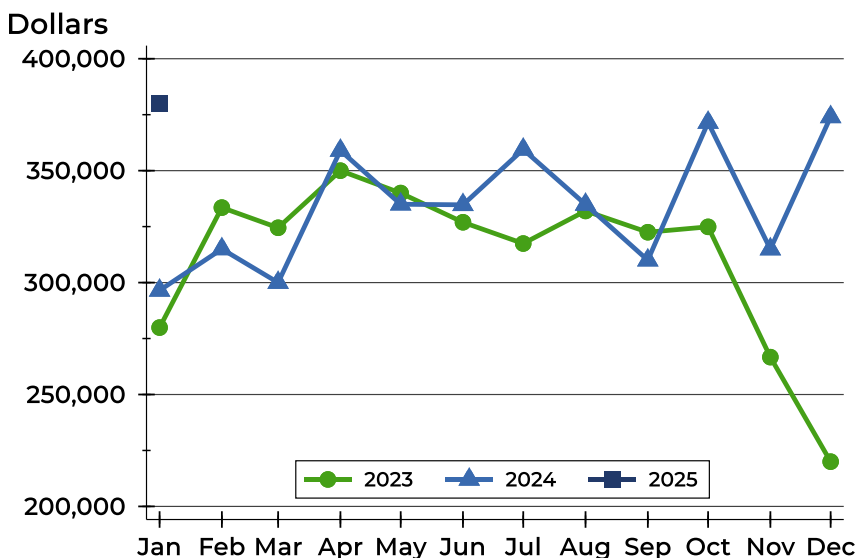
## Pottawatomie County Contracts Written Analysis

### Average Price



Month	2023	2024	2025
<b>January</b>	299,594	292,788	<b>382,859</b>
<b>February</b>	337,656	359,942	
<b>March</b>	303,959	324,583	
<b>April</b>	337,663	371,223	
<b>May</b>	324,033	371,615	
<b>June</b>	310,883	383,033	
<b>July</b>	320,544	368,096	
<b>August</b>	325,628	311,400	
<b>September</b>	318,421	324,163	
<b>October</b>	347,819	397,509	
<b>November</b>	310,786	317,669	
<b>December</b>	238,786	368,755	

### Median Price

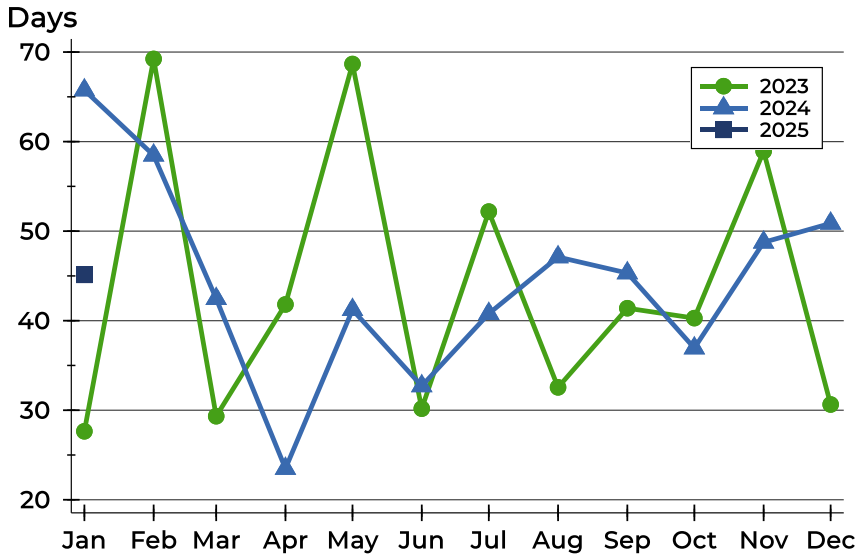


Month	2023	2024	2025
<b>January</b>	279,900	296,500	<b>380,000</b>
<b>February</b>	333,500	315,000	
<b>March</b>	324,500	300,000	
<b>April</b>	350,000	359,000	
<b>May</b>	340,000	335,000	
<b>June</b>	326,950	334,750	
<b>July</b>	317,450	359,500	
<b>August</b>	332,000	334,900	
<b>September</b>	322,500	310,000	
<b>October</b>	324,900	371,500	
<b>November</b>	266,703	314,950	
<b>December</b>	220,000	374,000	



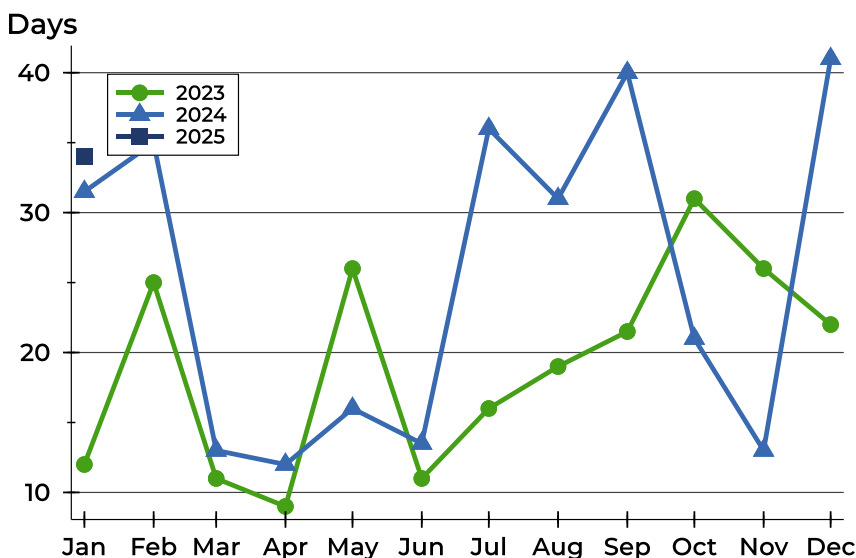
## Pottawatomie County Contracts Written Analysis

### Average DOM



Month	2023	2024	2025
January	28	66	<b>45</b>
February	69	58	
March	29	42	
April	42	23	
May	69	41	
June	30	33	
July	52	41	
August	33	47	
September	41	45	
October	40	37	
November	59	49	
December	31	51	

### Median DOM



Month	2023	2024	2025
January	12	32	<b>34</b>
February	25	35	
March	11	13	
April	9	12	
May	26	16	
June	11	14	
July	16	36	
August	19	31	
September	22	40	
October	31	21	
November	26	13	
December	22	41	



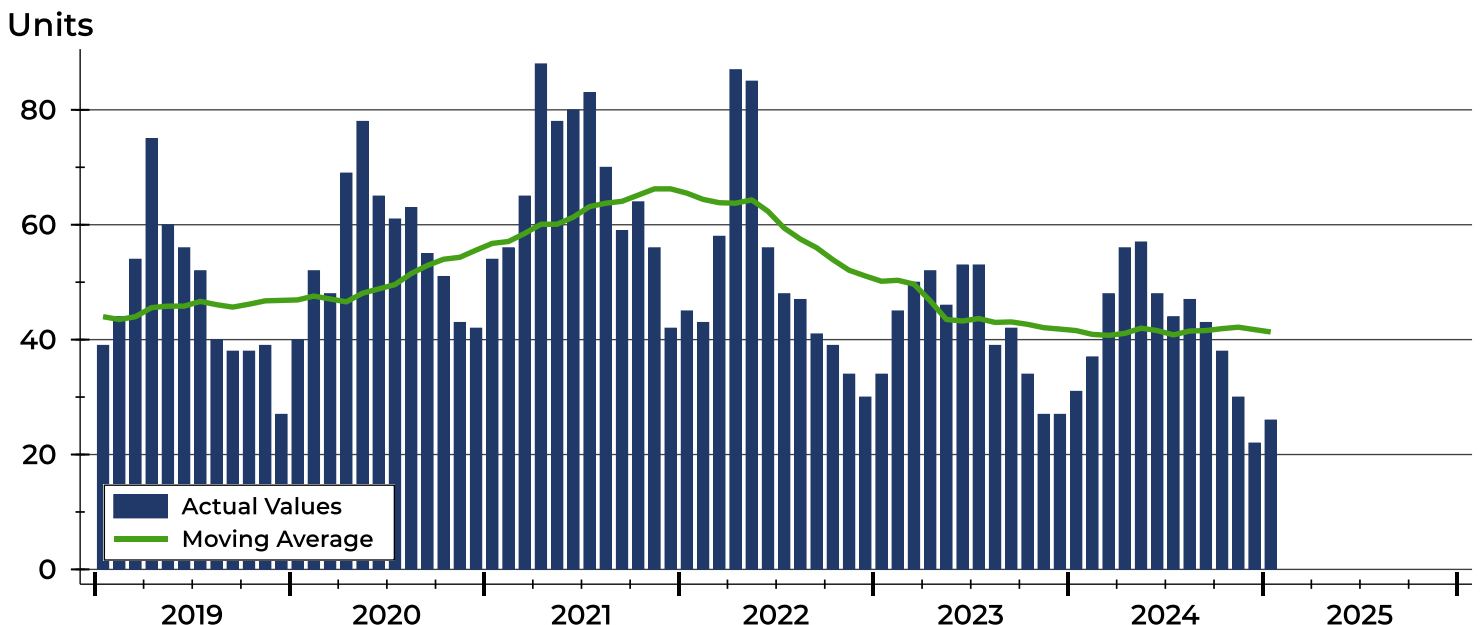
# Pottawatomie County Pending Contracts Analysis

Summary Statistics for Pending Contracts		End of January		
		2025	2024	Change
Pending Contracts		26	31	-16.1%
Volume (1,000s)		9,022	8,991	0.3%
Average	List Price	346,994	290,045	19.6%
	Days on Market	58	54	7.4%
	Percent of Original	100.2%	100.0%	0.2%
Median	List Price	324,900	249,900	30.0%
	Days on Market	41	40	2.5%
	Percent of Original	100.0%	100.0%	0.0%

A total of 26 listings in Pottawatomie County had contracts pending at the end of January, down from 31 contracts pending at the end of January 2024.

Pending contracts reflect listings with a contract in place at the end of the month. In contrast, contracts written measures the number of listings put under contract during the month.

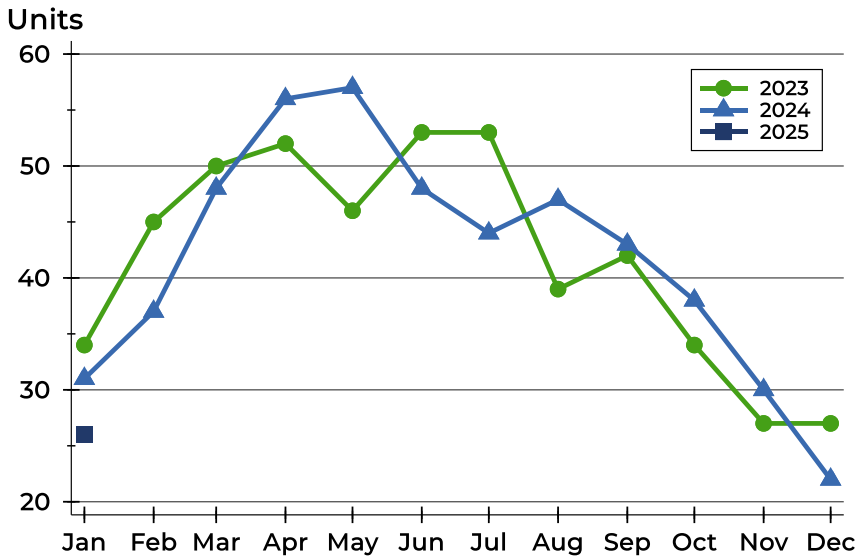
## History of Pending Contracts





## Pottawatomie County Pending Contracts Analysis

### Pending Contracts by Month



Month	2023	2024	2025
<b>January</b>	34	31	<b>26</b>
<b>February</b>	45	37	
<b>March</b>	50	48	
<b>April</b>	52	56	
<b>May</b>	46	57	
<b>June</b>	53	48	
<b>July</b>	53	44	
<b>August</b>	39	47	
<b>September</b>	42	43	
<b>October</b>	34	38	
<b>November</b>	27	30	
<b>December</b>	27	22	

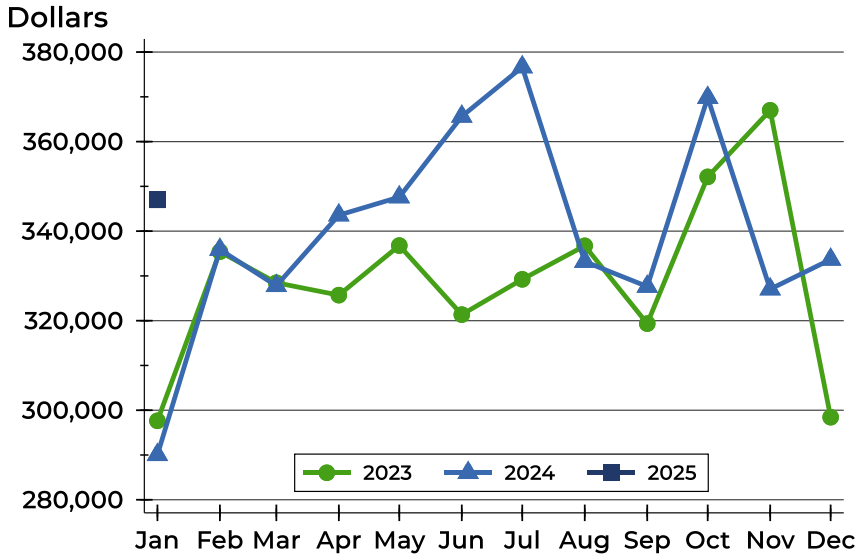
### Pending Contracts by Price Range

Price Range	Pending Contracts		List Price		Days on Market		Price as % of Orig.	
	Number	Percent	Average	Median	Avg.	Med.	Avg.	Med.
Below \$25,000	0	0.0%	N/A	N/A	N/A	N/A	N/A	N/A
\$25,000-\$49,999	0	0.0%	N/A	N/A	N/A	N/A	N/A	N/A
\$50,000-\$99,999	0	0.0%	N/A	N/A	N/A	N/A	N/A	N/A
\$100,000-\$124,999	0	0.0%	N/A	N/A	N/A	N/A	N/A	N/A
\$125,000-\$149,999	2	7.7%	134,625	134,625	52	52	95.6%	95.6%
\$150,000-\$174,999	0	0.0%	N/A	N/A	N/A	N/A	N/A	N/A
\$175,000-\$199,999	1	3.8%	189,000	189,000	90	90	100.0%	100.0%
\$200,000-\$249,999	4	15.4%	233,575	234,700	44	37	98.9%	100.0%
\$250,000-\$299,999	3	11.5%	280,000	285,000	50	41	110.0%	100.0%
\$300,000-\$399,999	7	26.9%	349,214	329,900	103	52	98.6%	100.0%
\$400,000-\$499,999	7	26.9%	424,257	415,000	18	17	99.5%	100.0%
\$500,000-\$749,999	2	7.7%	687,500	687,500	70	70	100.0%	100.0%
\$750,000-\$999,999	0	0.0%	N/A	N/A	N/A	N/A	N/A	N/A
\$1,000,000 and up	0	0.0%	N/A	N/A	N/A	N/A	N/A	N/A



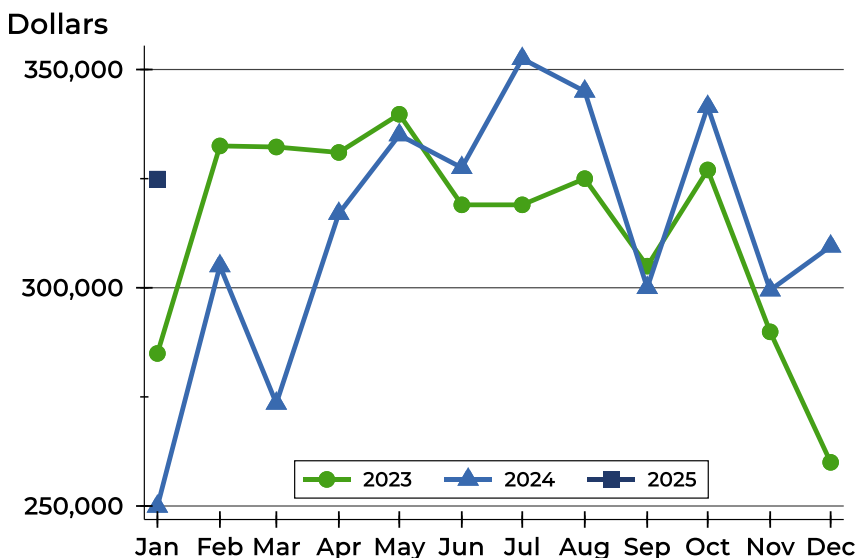
## Pottawatomie County Pending Contracts Analysis

### Average Price



Month	2023	2024	2025
<b>January</b>	297,634	290,045	<b>346,994</b>
<b>February</b>	335,418	335,886	
<b>March</b>	328,472	327,794	
<b>April</b>	325,708	343,570	
<b>May</b>	336,778	347,611	
<b>June</b>	321,353	365,630	
<b>July</b>	329,236	376,651	
<b>August</b>	336,728	333,200	
<b>September</b>	319,350	327,636	
<b>October</b>	352,121	369,818	
<b>November</b>	366,993	327,047	
<b>December</b>	298,444	333,680	

### Median Price

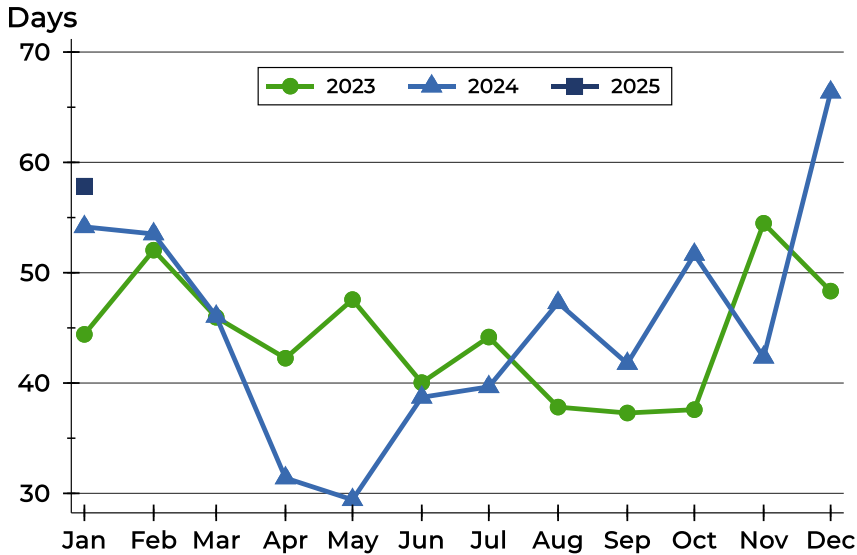


Month	2023	2024	2025
<b>January</b>	284,950	249,900	<b>324,900</b>
<b>February</b>	332,500	305,000	
<b>March</b>	332,250	273,500	
<b>April</b>	331,000	317,000	
<b>May</b>	339,750	335,000	
<b>June</b>	319,000	327,500	
<b>July</b>	319,000	352,475	
<b>August</b>	325,000	345,000	
<b>September</b>	304,950	300,000	
<b>October</b>	327,000	341,500	
<b>November</b>	289,900	299,450	
<b>December</b>	260,000	309,500	



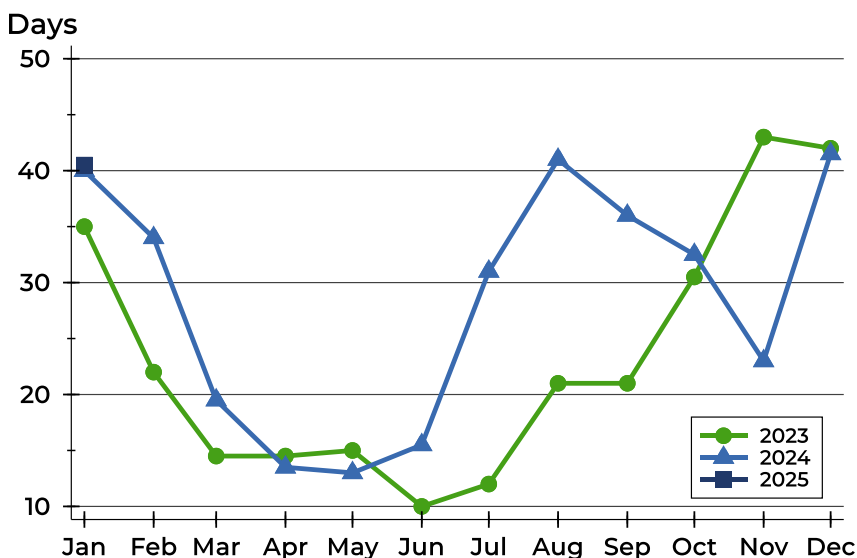
## Pottawatomie County Pending Contracts Analysis

### Average DOM



Month	2023	2024	2025
January	44	54	<b>58</b>
February	52	54	
March	46	46	
April	42	31	
May	48	29	
June	40	39	
July	44	40	
August	38	47	
September	37	42	
October	38	52	
November	54	42	
December	48	66	

### Median DOM



Month	2023	2024	2025
January	35	40	<b>41</b>
February	22	34	
March	15	20	
April	15	14	
May	15	13	
June	10	16	
July	12	31	
August	21	41	
September	21	36	
October	31	33	
November	43	23	
December	42	42	