



**October
2021**

Flint Hills MLS Statistics



**FLINT HILLS
ASSOCIATION
OF REALTORS®**

Riley County Housing Report



Market Overview

Riley County Home Sales Rose in October

Total home sales in Riley County rose by 1.3% last month to 79 units, compared to 78 units in October 2020. Total sales volume was \$19.2 million, up 12.6% from a year earlier.

The median sale price in October was \$210,000, up from \$200,700 a year earlier. Homes that sold in October were typically on the market for 22 days and sold for 100.0% of their list prices.

Riley County Active Listings Down at End of October

The total number of active listings in Riley County at the end of October was 184 units, down from 231 at the same point in 2020. This represents a 2.0 months' supply of homes available for sale. The median list price of homes on the market at the end of October was \$209,500.

During October, a total of 91 contracts were written up from 67 in October 2020. At the end of the month, there were 156 contracts still pending.

Report Contents

- Summary Statistics – Page 2
- Closed Listing Analysis – Page 3
- Active Listings Analysis – Page 7
- Months' Supply Analysis – Page 11
- New Listings Analysis – Page 12
- Contracts Written Analysis – Page 15
- Pending Contracts Analysis – Page 19

Contact Information

Margaret Pendleton, Association Executive
 Flint Hills Association of REALTORS®
 205 S. Seth Child Road
 Manhattan, KS 66502
 685-776-1212
ae@flinthillsrealtors.net
www.flinthillsrealtors.net



**October
2021**

Flint Hills MLS Statistics



**FLINT HILLS
ASSOCIATION
OF REALTORS®**

Riley County Summary Statistics

October MLS Statistics Three-year History		Current Month			Year-to-Date			
		2021	2020	2019	2021	2020	2019	
Home Sales		79	78	77	942	811	678	
	Change from prior year	1.3%	1.3%	79.1%	16.2%	19.6%	0.1%	
Active Listings		184	231	348	N/A	N/A	N/A	
	Change from prior year	-20.3%	-33.6%	-7.0%				
Months' Supply		2.0	3.0	5.3	N/A	N/A	N/A	
	Change from prior year	-33.3%	-43.4%	-10.2%				
New Listings		69	104	90	1,165	1,069	1,137	
	Change from prior year	-33.7%	15.6%	-3.2%	9.0%	-6.0%	-3.8%	
Contracts Written		91	67	65	1,003	841	701	
	Change from prior year	35.8%	3.1%	12.1%	19.3%	20.0%	-0.6%	
Pending Contracts		156	116	92	N/A	N/A	N/A	
	Change from prior year	34.5%	26.1%	1.1%				
Sales Volume (1,000s)		19,173	17,022	16,376	219,577	174,760	148,306	
	Change from prior year	12.6%	3.9%	91.8%	25.6%	17.8%	3.8%	
Average	Sale Price	242,697	218,236	212,680	233,096	215,487	218,741	
		Change from prior year	11.2%	2.6%	7.1%	8.2%	-1.5%	3.6%
	List Price of Actives	282,472	253,619	234,698	N/A	N/A	N/A	
		Change from prior year	11.4%	8.1%	0.8%			
	Days on Market	37	50	79	35	59	69	
	Change from prior year	-26.0%	-36.7%	1.3%	-40.7%	-14.5%	-1.4%	
	Percent of List	98.1%	98.0%	96.4%	99.2%	97.9%	97.4%	
	Change from prior year	0.1%	1.7%	1.0%	1.3%	0.5%	0.1%	
	Percent of Original	96.0%	95.8%	93.1%	98.2%	95.9%	94.9%	
	Change from prior year	0.2%	2.9%	2.3%	2.4%	1.1%	-0.8%	
Median	Sale Price	210,000	200,700	184,500	210,000	193,000	193,000	
		Change from prior year	4.6%	8.8%	19.0%	8.8%	0.0%	1.6%
	List Price of Actives	209,500	205,000	185,000	N/A	N/A	N/A	
		Change from prior year	2.2%	10.8%	-5.7%			
	Days on Market	22	25	45	10	29	41	
	Change from prior year	-12.0%	-44.4%	-21.1%	-65.5%	-29.3%	2.5%	
	Percent of List	100.0%	98.8%	97.8%	100.0%	98.5%	98.1%	
	Change from prior year	1.2%	1.0%	1.0%	1.5%	0.4%	0.0%	
	Percent of Original	98.6%	97.8%	94.8%	100.0%	97.5%	96.9%	
	Change from prior year	0.8%	3.2%	0.4%	2.6%	0.6%	0.4%	

Note: Year-to-date statistics cannot be calculated for Active Listings, Months' Supply and Pending Contracts.



Riley County Closed Listings Analysis

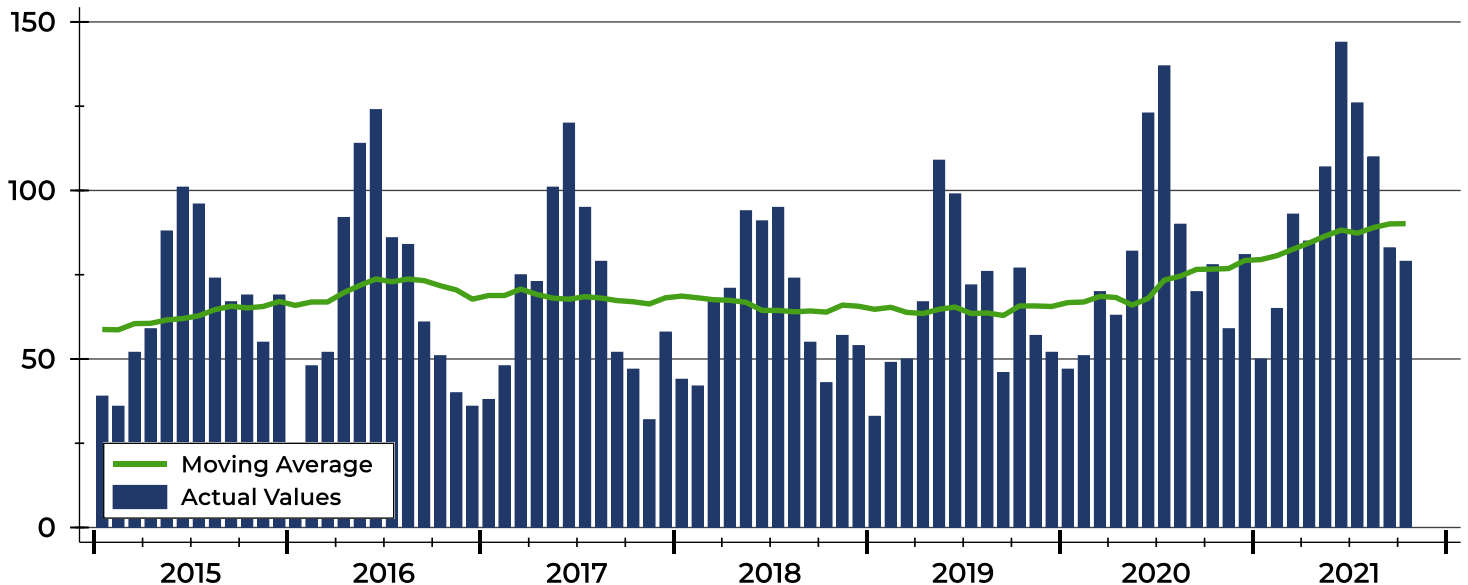
Summary Statistics for Closed Listings		2021	October 2020	Change	2021	Year-to-Date 2020	Change
Closed Listings		79	78	1.3%	942	811	16.2%
Volume (1,000s)		19,173	17,022	12.6%	219,577	174,760	25.6%
Months' Supply		2.0	3.0	-33.3%	N/A	N/A	N/A
Average	Sale Price	242,697	218,236	11.2%	233,096	215,487	8.2%
	Days on Market	37	50	-26.0%	35	59	-40.7%
	Percent of List	98.1%	98.0%	0.1%	99.2%	97.9%	1.3%
	Percent of Original	96.0%	95.8%	0.2%	98.2%	95.9%	2.4%
Median	Sale Price	210,000	200,700	4.6%	210,000	193,000	8.8%
	Days on Market	22	25	-12.0%	10	29	-65.5%
	Percent of List	100.0%	98.8%	1.2%	100.0%	98.5%	1.5%
	Percent of Original	98.6%	97.8%	0.8%	100.0%	97.5%	2.6%

A total of 79 homes sold in Riley County in October, up from 78 units in October 2020. Total sales volume rose to \$19.2 million compared to \$17.0 million in the previous year.

The median sales price in October was \$210,000, up 4.6% compared to the prior year. Median days on market was 22 days, up from 11 days in September, but down from 25 in October 2020.

History of Closed Listings

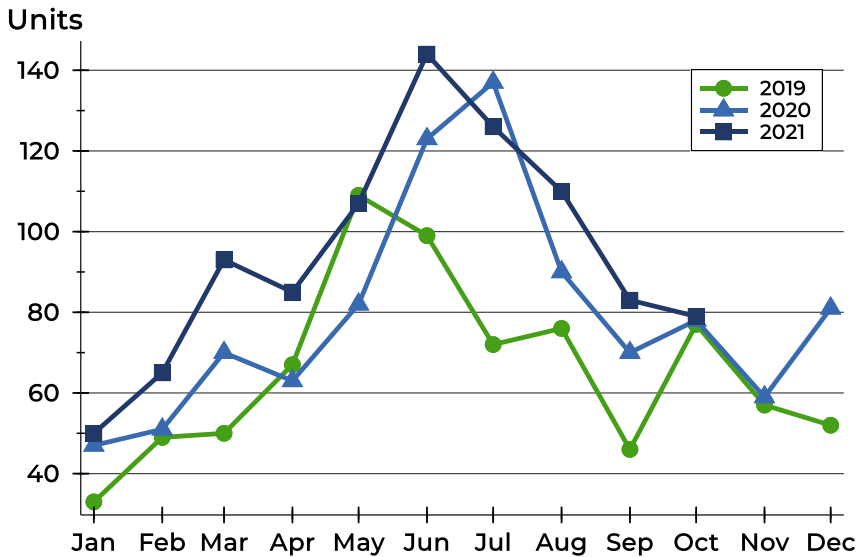
Units





Riley County Closed Listings Analysis

Closed Listings by Month



Month	2019	2020	2021
January	33	47	50
February	49	51	65
March	50	70	93
April	67	63	85
May	109	82	107
June	99	123	144
July	72	137	126
August	76	90	110
September	46	70	83
October	77	78	79
November	57	59	
December	52	81	

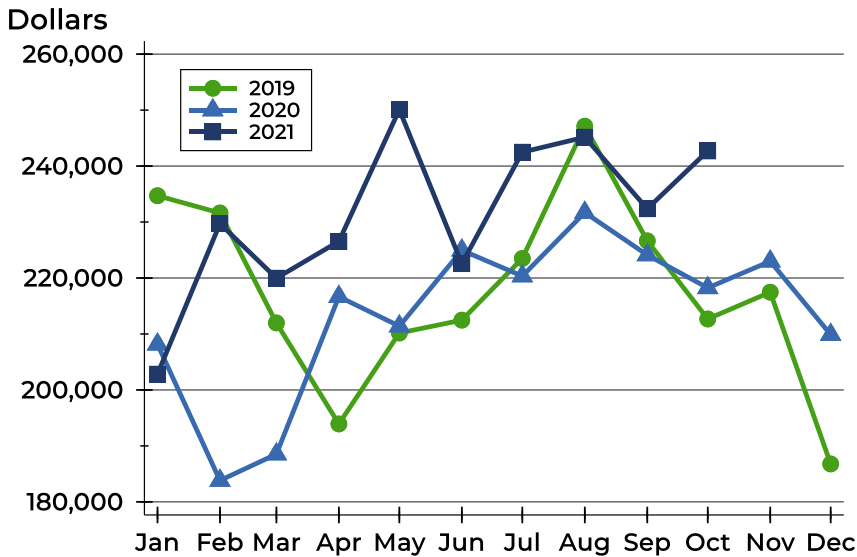
Closed Listings by Price Range

Price Range	Sales		Months' Supply	Sale Price		Days on Market		Price as % of List		Price as % of Orig.	
	Number	Percent		Average	Median	Avg.	Med.	Avg.	Med.	Avg.	Med.
Below \$25,000	0	0.0%	N/A	N/A	N/A	N/A	N/A	N/A	N/A	N/A	N/A
\$25,000-\$49,999	0	0.0%	N/A	N/A	N/A	N/A	N/A	N/A	N/A	N/A	N/A
\$50,000-\$99,999	5	6.3%	2.3	77,400	80,000	82	83	87.7%	88.9%	81.6%	83.4%
\$100,000-\$124,999	8	10.1%	2.3	113,988	113,500	44	32	95.3%	98.0%	93.8%	96.6%
\$125,000-\$149,999	5	6.3%	2.3	141,100	140,000	40	50	97.2%	100.0%	91.0%	89.7%
\$150,000-\$174,999	7	8.9%	2.1	167,447	168,000	30	6	98.4%	98.5%	95.9%	100.0%
\$175,000-\$199,999	13	16.5%	1.4	187,696	185,000	29	20	100.4%	100.0%	98.0%	100.0%
\$200,000-\$249,999	9	11.4%	1.5	223,167	225,000	10	7	98.7%	97.3%	96.7%	95.6%
\$250,000-\$299,999	10	12.7%	1.6	266,400	263,250	23	17	100.3%	100.0%	99.1%	99.1%
\$300,000-\$399,999	16	20.3%	2.0	339,000	334,000	46	38	100.0%	100.0%	99.8%	100.0%
\$400,000-\$499,999	2	2.5%	3.8	427,500	427,500	3	3	98.9%	98.9%	98.9%	98.9%
\$500,000-\$749,999	3	3.8%	3.6	598,333	570,000	36	1	96.0%	100.0%	93.2%	100.0%
\$750,000-\$999,999	1	1.3%	24.0	810,000	810,000	161	161	92.6%	92.6%	90.1%	90.1%
\$1,000,000 and up	0	0.0%	N/A	N/A	N/A	N/A	N/A	N/A	N/A	N/A	N/A



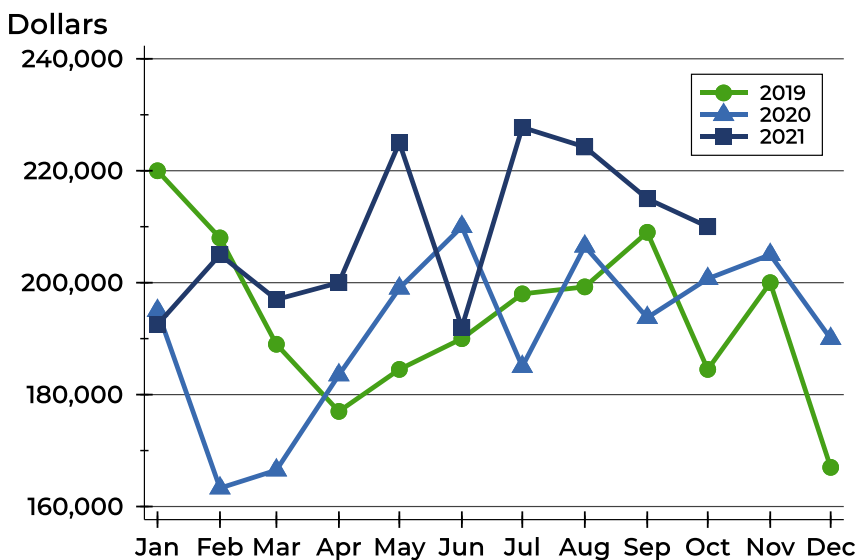
Riley County Closed Listings Analysis

Average Price



Month	2019	2020	2021
January	234,709	208,157	202,830
February	231,624	183,819	229,715
March	211,977	188,530	219,973
April	193,922	216,671	226,550
May	210,177	211,400	250,088
June	212,476	224,955	222,557
July	223,492	220,343	242,486
August	247,130	231,701	245,172
September	226,639	224,114	232,372
October	212,680	218,236	242,697
November	217,467	222,989	
December	186,779	209,890	

Median Price

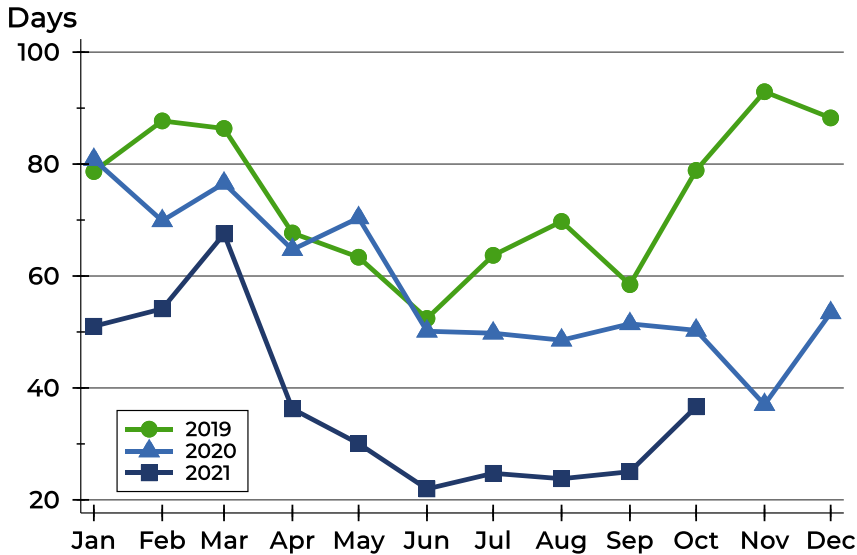


Month	2019	2020	2021
January	220,000	195,000	192,500
February	208,000	163,295	205,000
March	189,000	166,500	197,000
April	177,000	183,500	200,000
May	184,500	199,000	225,000
June	190,000	210,000	192,000
July	198,000	185,000	227,750
August	199,250	206,500	224,250
September	209,000	193,750	215,000
October	184,500	200,700	210,000
November	200,000	205,000	
December	167,000	190,000	



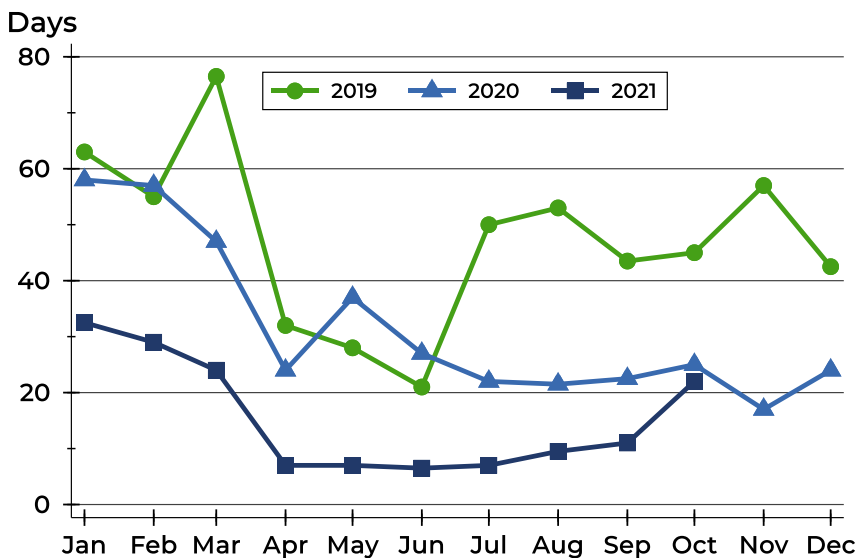
Riley County Closed Listings Analysis

Average DOM



Month	2019	2020	2021
January	79	81	51
February	88	70	54
March	86	77	68
April	68	65	36
May	63	70	30
June	52	50	22
July	64	50	25
August	70	49	24
September	58	51	25
October	79	50	37
November	93	37	
December	88	53	

Median DOM



Month	2019	2020	2021
January	63	58	33
February	55	57	29
March	77	47	24
April	32	24	7
May	28	37	7
June	21	27	7
July	50	22	7
August	53	22	10
September	44	23	11
October	45	25	22
November	57	17	
December	43	24	



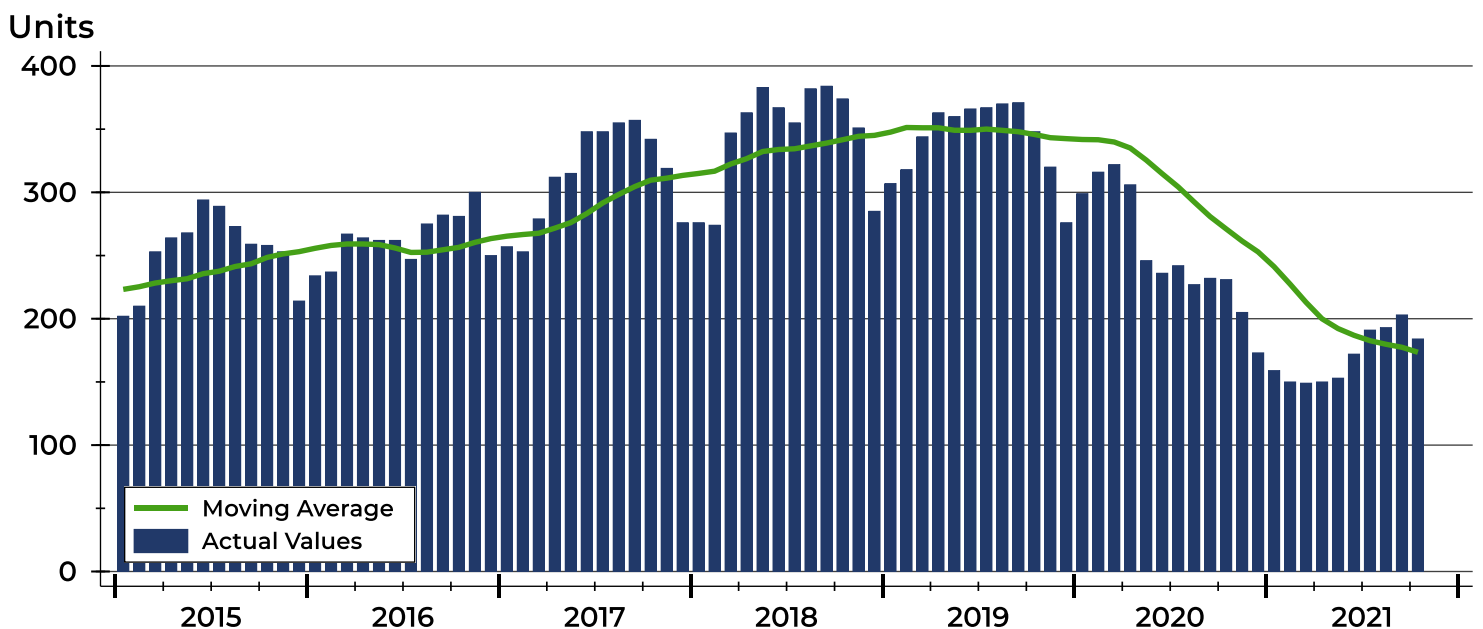
Riley County Active Listings Analysis

Summary Statistics for Active Listings		2021	End of October 2020	Change
Active Listings		184	231	-20.3%
Volume (1,000s)		51,975	58,586	-11.3%
Months' Supply		2.0	3.0	-33.3%
Average	List Price	282,472	253,619	11.4%
	Days on Market	90	94	-4.3%
	Percent of Original	97.5%	97.3%	0.2%
Median	List Price	209,500	205,000	2.2%
	Days on Market	60	60	0.0%
	Percent of Original	100.0%	100.0%	0.0%

A total of 184 homes were available for sale in Riley County at the end of October. This represents a 2.0 months' supply of active listings.

The median list price of homes on the market at the end of October was \$209,500, up 2.2% from 2020. The typical time on market for active listings was 60 days, the same as in October 2020.

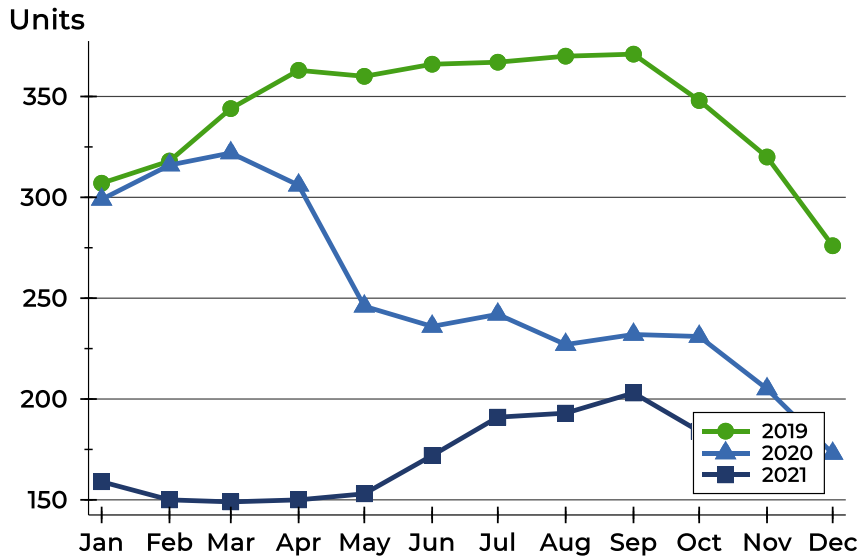
History of Active Listings





Riley County Active Listings Analysis

Active Listings by Month



Month	2019	2020	2021
January	307	299	159
February	318	316	150
March	344	322	149
April	363	306	150
May	360	246	153
June	366	236	172
July	367	242	191
August	370	227	193
September	371	232	203
October	348	231	184
November	320	205	
December	276	173	

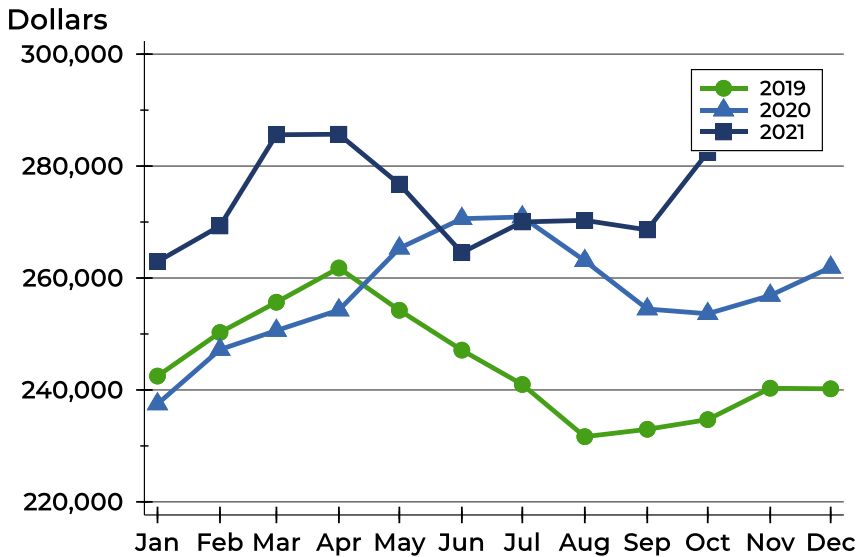
Active Listings by Price Range

Price Range	Active Listings		Months' Supply	List Price		Days on Market		Price as % of Orig.	
	Number	Percent		Average	Median	Avg.	Med.	Avg.	Med.
Below \$25,000	0	0.0%	N/A	N/A	N/A	N/A	N/A	N/A	N/A
\$25,000-\$49,999	0	0.0%	N/A	N/A	N/A	N/A	N/A	N/A	N/A
\$50,000-\$99,999	9	4.9%	2.3	83,478	88,500	63	62	98.0%	100.0%
\$100,000-\$124,999	12	6.5%	2.3	113,800	111,950	58	58	95.8%	100.0%
\$125,000-\$149,999	22	12.0%	2.3	138,500	139,700	101	86	95.8%	98.5%
\$150,000-\$174,999	24	13.0%	2.1	162,058	162,000	68	53	96.7%	97.4%
\$175,000-\$199,999	17	9.2%	1.4	186,681	185,000	59	33	98.2%	100.0%
\$200,000-\$249,999	24	13.0%	1.5	221,892	216,500	127	81	97.2%	100.0%
\$250,000-\$299,999	19	10.3%	1.6	275,574	275,000	79	72	97.4%	100.0%
\$300,000-\$399,999	28	15.2%	2.0	338,819	329,950	101	58	98.5%	100.0%
\$400,000-\$499,999	11	6.0%	3.8	439,141	429,000	60	45	99.1%	100.0%
\$500,000-\$749,999	8	4.3%	3.6	575,775	549,950	41	22	100.6%	100.0%
\$750,000-\$999,999	6	3.3%	24.0	868,833	897,500	260	141	94.6%	96.3%
\$1,000,000 and up	4	2.2%	N/A	1,262,500	1,225,000	108	66	100.0%	100.0%



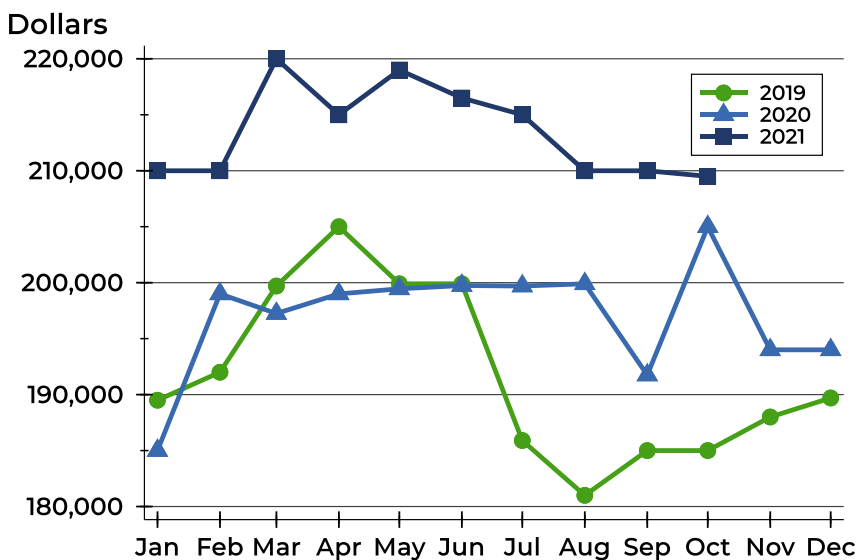
Riley County Active Listings Analysis

Average Price



Month	2019	2020	2021
January	242,482	237,490	262,929
February	250,264	247,217	269,299
March	255,674	250,613	285,597
April	261,789	254,270	285,687
May	254,240	265,322	276,770
June	247,115	270,600	264,539
July	240,981	270,904	270,021
August	231,649	263,083	270,304
September	232,972	254,462	268,598
October	234,698	253,619	282,472
November	240,309	256,881	
December	240,202	261,905	

Median Price

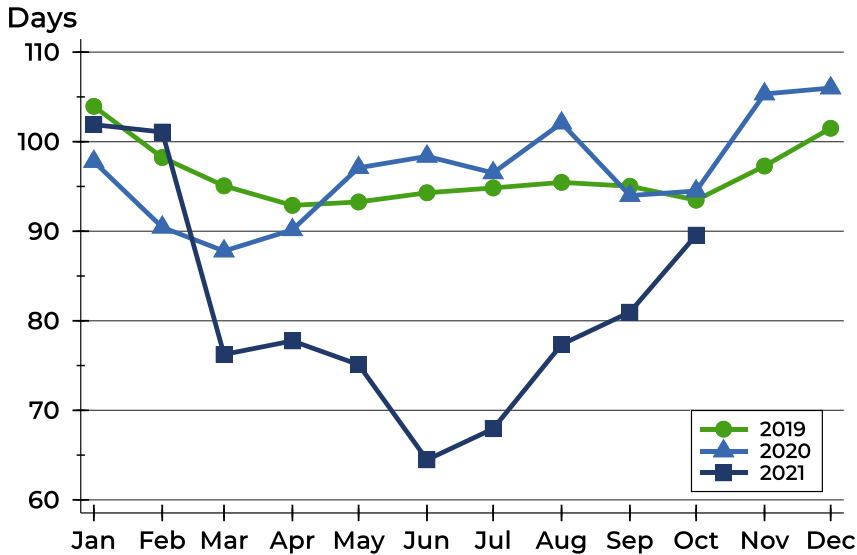


Month	2019	2020	2021
January	189,500	185,000	210,000
February	192,000	199,000	210,000
March	199,700	197,245	220,000
April	205,000	199,000	215,000
May	199,900	199,450	219,000
June	199,900	199,748	216,500
July	185,900	199,700	215,000
August	181,000	199,900	210,000
September	185,000	191,750	210,000
October	185,000	205,000	209,500
November	188,000	194,000	
December	189,700	194,000	



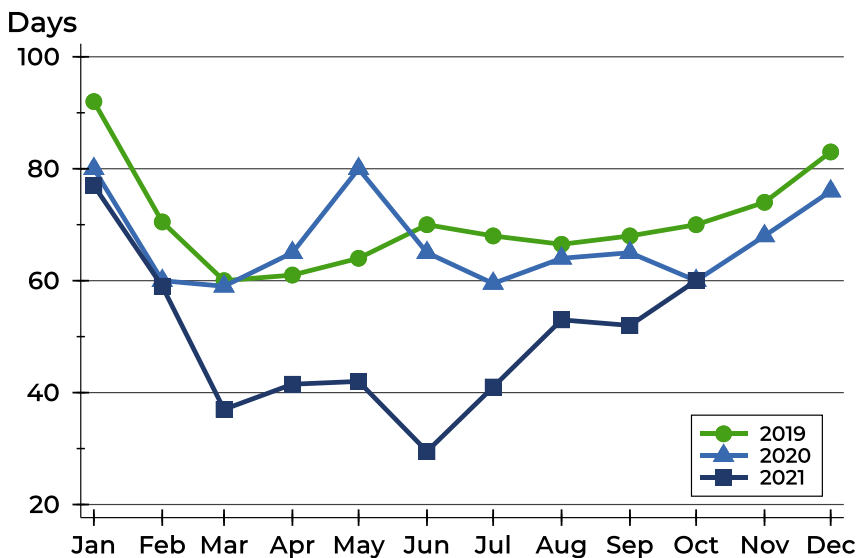
Riley County Active Listings Analysis

Average DOM



Month	2019	2020	2021
January	104	98	102
February	98	90	101
March	95	88	76
April	93	90	78
May	93	97	75
June	94	98	64
July	95	97	68
August	95	102	77
September	95	94	81
October	93	94	90
November	97	105	
December	102	106	

Median DOM

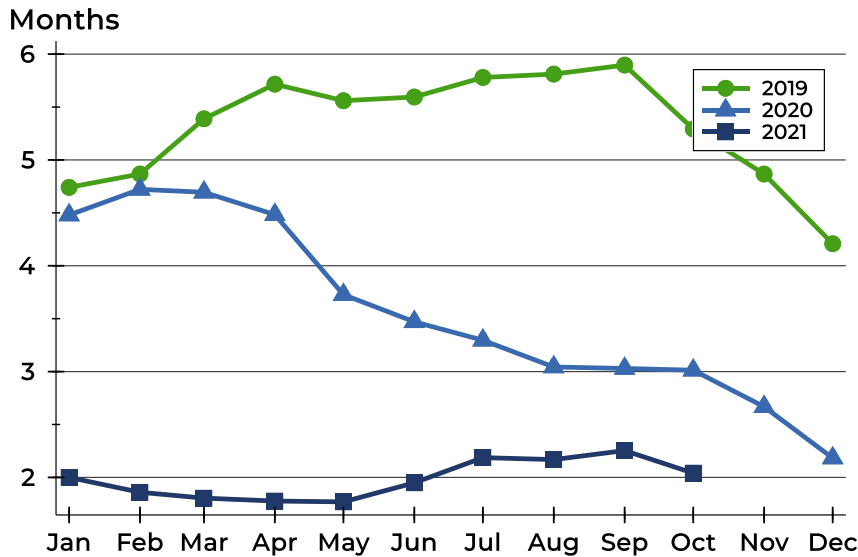


Month	2019	2020	2021
January	92	80	77
February	71	60	59
March	60	59	37
April	61	65	42
May	64	80	42
June	70	65	30
July	68	60	41
August	67	64	53
September	68	65	52
October	70	60	60
November	74	68	
December	83	76	



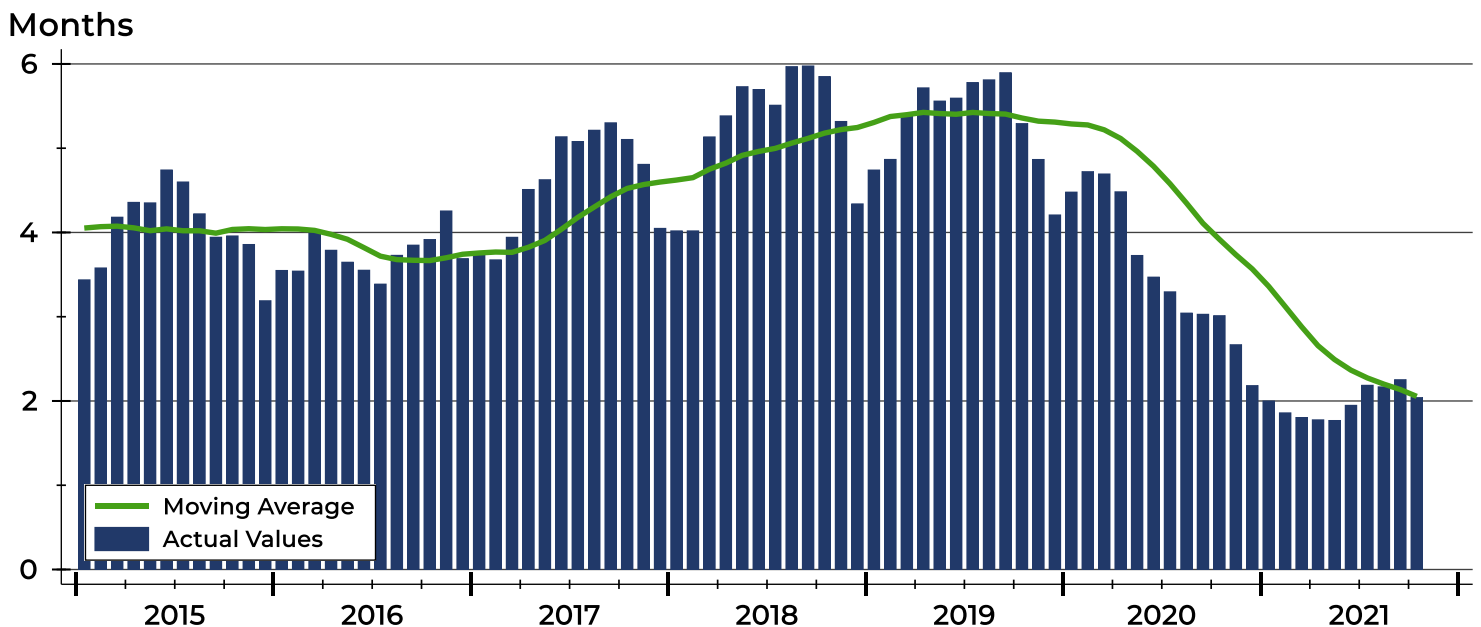
Riley County Months' Supply Analysis

Months' Supply by Month



Month	2019	2020	2021
January	4.7	4.5	2.0
February	4.9	4.7	1.9
March	5.4	4.7	1.8
April	5.7	4.5	1.8
May	5.6	3.7	1.8
June	5.6	3.5	1.9
July	5.8	3.3	2.2
August	5.8	3.0	2.2
September	5.9	3.0	2.3
October	5.3	3.0	2.0
November	4.9	2.7	
December	4.2	2.2	

History of Month's Supply





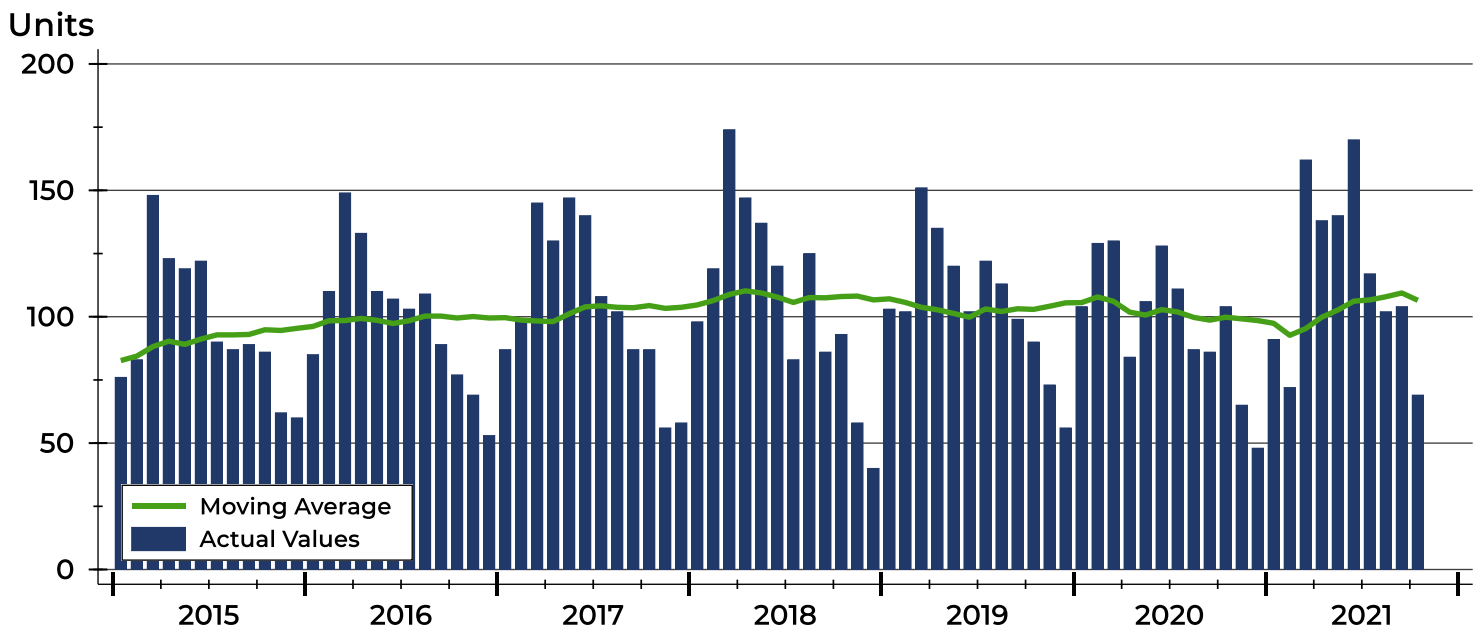
Riley County New Listings Analysis

Summary Statistics for New Listings		2021	October 2020	Change
Current Month	New Listings	69	104	-33.7%
	Volume (1,000s)	20,998	24,447	-14.1%
	Average List Price	304,325	235,066	29.5%
	Median List Price	195,000	217,450	-10.3%
Year-to-Date	New Listings	1,165	1,069	9.0%
	Volume (1,000s)	285,064	242,134	17.7%
	Average List Price	244,690	226,505	8.0%
	Median List Price	215,000	197,490	8.9%

A total of 69 new listings were added in Riley County during October, down 33.7% from the same month in 2020. Year-to-date Riley County has seen 1,165 new listings.

The median list price of these homes was \$195,000 down from \$217,450 in 2020.

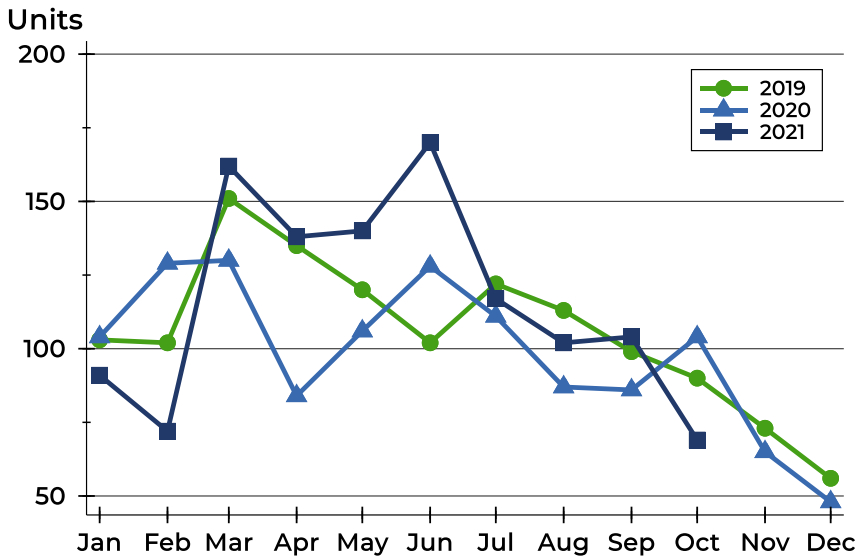
History of New Listings





Riley County New Listings Analysis

New Listings by Month



Month	2019	2020	2021
January	103	104	91
February	102	129	72
March	151	130	162
April	135	84	138
May	120	106	140
June	102	128	170
July	122	111	117
August	113	87	102
September	99	86	104
October	90	104	69
November	73	65	
December	56	48	

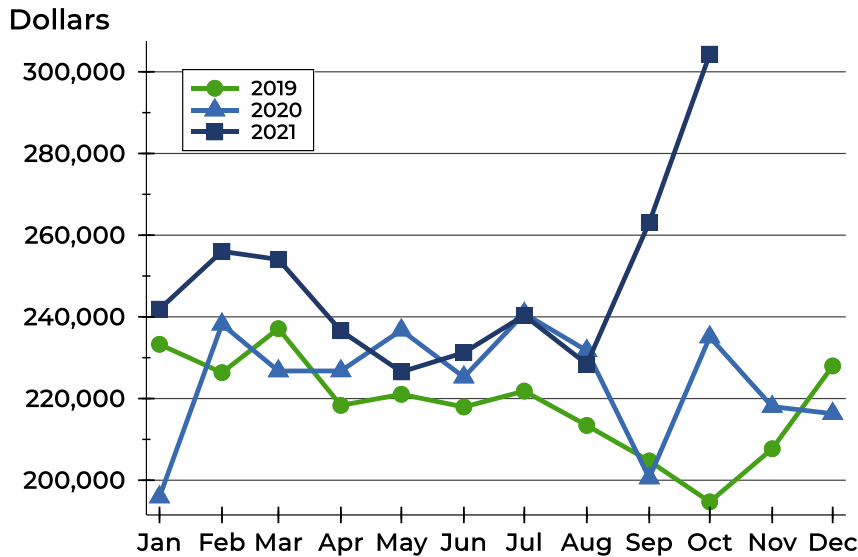
New Listings by Price Range

Price Range	New Listings		List Price		Days on Market		Price as % of Orig.	
	Number	Percent	Average	Median	Avg.	Med.	Avg.	Med.
Below \$25,000	0	0.0%	N/A	N/A	N/A	N/A	N/A	N/A
\$25,000-\$49,999	0	0.0%	N/A	N/A	N/A	N/A	N/A	N/A
\$50,000-\$99,999	2	2.9%	71,750	71,750	17	17	100.0%	100.0%
\$100,000-\$124,999	2	2.9%	104,950	104,950	9	9	100.0%	100.0%
\$125,000-\$149,999	7	10.1%	139,400	142,000	16	14	99.2%	100.0%
\$150,000-\$174,999	14	20.3%	162,864	162,500	21	19	98.3%	100.0%
\$175,000-\$199,999	10	14.5%	185,800	185,000	8	6	99.3%	100.0%
\$200,000-\$249,999	7	10.1%	231,400	230,000	11	12	100.0%	100.0%
\$250,000-\$299,999	6	8.7%	276,150	270,000	13	8	99.7%	100.0%
\$300,000-\$399,999	8	11.6%	352,719	357,450	15	9	99.2%	100.0%
\$400,000-\$499,999	3	4.3%	419,667	429,000	15	11	100.0%	100.0%
\$500,000-\$749,999	5	7.2%	569,740	549,900	15	10	99.7%	100.0%
\$750,000-\$999,999	3	4.3%	858,333	850,000	12	13	100.0%	100.0%
\$1,000,000 and up	2	2.9%	1,375,000	1,375,000	15	15	100.0%	100.0%



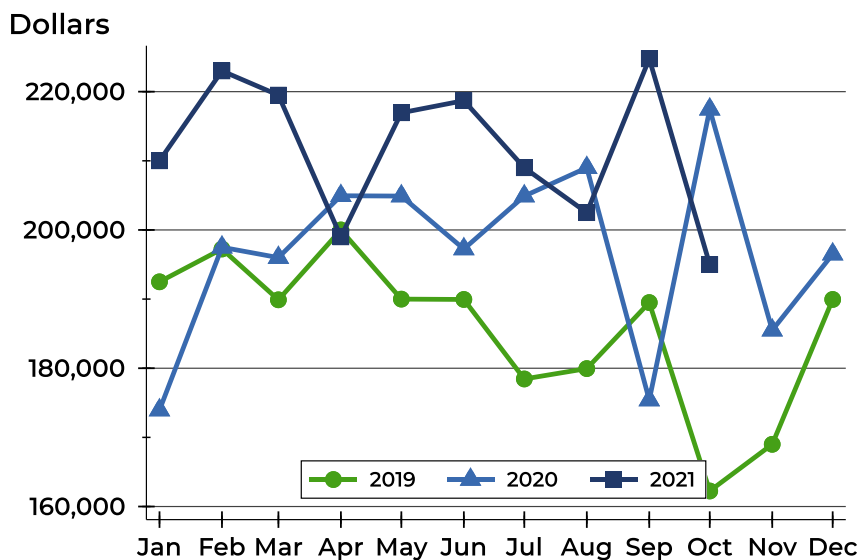
Riley County New Listings Analysis

Average Price



Month	2019	2020	2021
January	233,282	195,887	241,888
February	226,334	238,191	256,032
March	237,119	226,747	254,059
April	218,324	226,764	236,597
May	221,035	236,745	226,526
June	217,944	225,242	231,252
July	221,832	240,816	240,361
August	213,423	231,720	228,438
September	204,728	200,543	263,100
October	194,701	235,066	304,325
November	207,707	218,030	
December	227,983	216,300	

Median Price



Month	2019	2020	2021
January	192,500	173,950	210,000
February	197,250	197,500	223,000
March	189,900	196,000	219,500
April	200,000	204,948	199,000
May	190,000	204,900	216,950
June	189,950	197,250	218,700
July	178,450	204,900	209,000
August	179,950	209,000	202,500
September	189,500	175,400	224,750
October	162,250	217,450	195,000
November	169,000	185,500	
December	189,950	196,500	

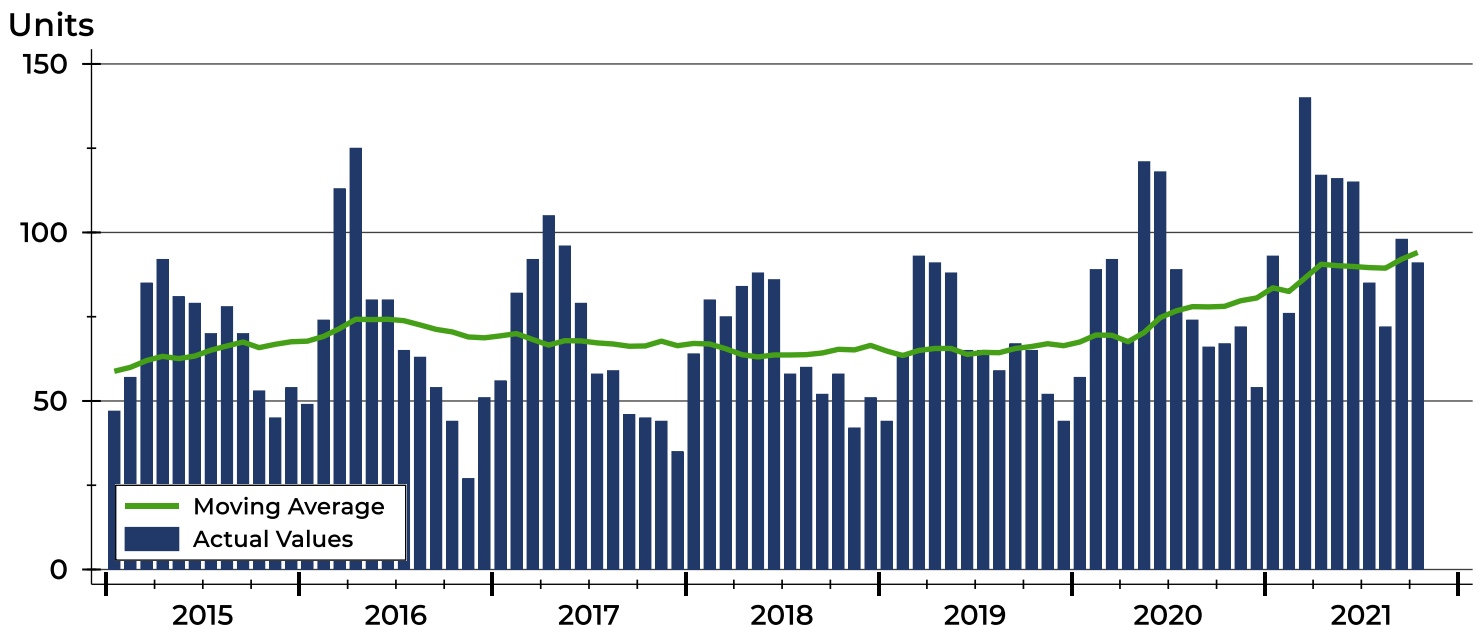


Riley County Contracts Written Analysis

Summary Statistics for Contracts Written		2021	October 2020	Change	2021	Year-to-Date 2020	Change
Contracts Written		91	67	35.8%	1,003	841	19.3%
Volume (1,000s)		23,336	14,443	61.6%	242,139	186,516	29.8%
Average	Sale Price	256,442	215,569	19.0%	241,415	221,779	8.9%
	Days on Market	43	45	-4.4%	34	56	-39.3%
	Percent of Original	96.4%	97.0%	-0.6%	98.5%	96.1%	2.5%
Median	Sale Price	212,500	194,900	9.0%	216,000	197,000	9.6%
	Days on Market	28	18	55.6%	11	26	-57.7%
	Percent of Original	100.0%	97.9%	2.1%	100.0%	97.6%	2.5%

A total of 91 contracts for sale were written in Riley County during the month of October, up from 67 in 2020. The median list price of these homes was \$212,500, up from \$194,900 the prior year. Half of the homes that went under contract in October were on the market less than 28 days, compared to 18 days in October 2020.

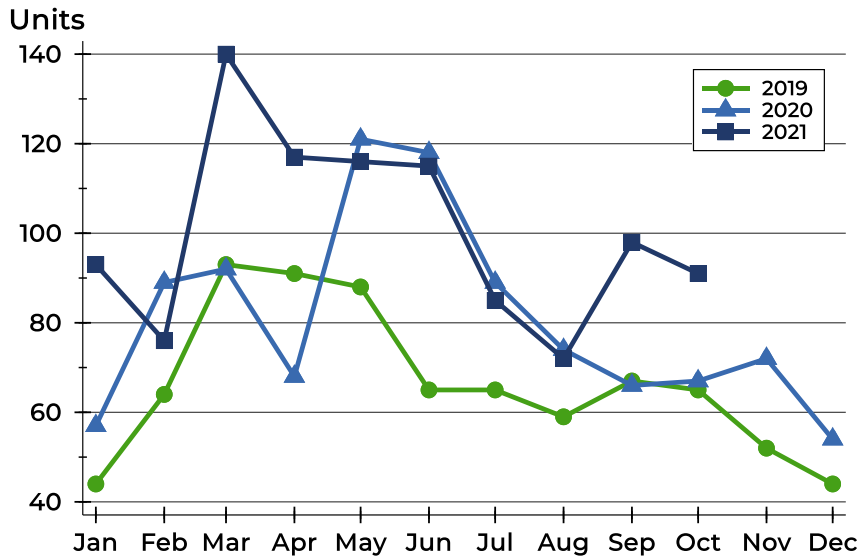
History of Contracts Written





Riley County Contracts Written Analysis

Contracts Written by Month



Month	2019	2020	2021
January	44	57	93
February	64	89	76
March	93	92	140
April	91	68	117
May	88	121	116
June	65	118	115
July	65	89	85
August	59	74	72
September	67	66	98
October	65	67	91
November	52	72	
December	44	54	

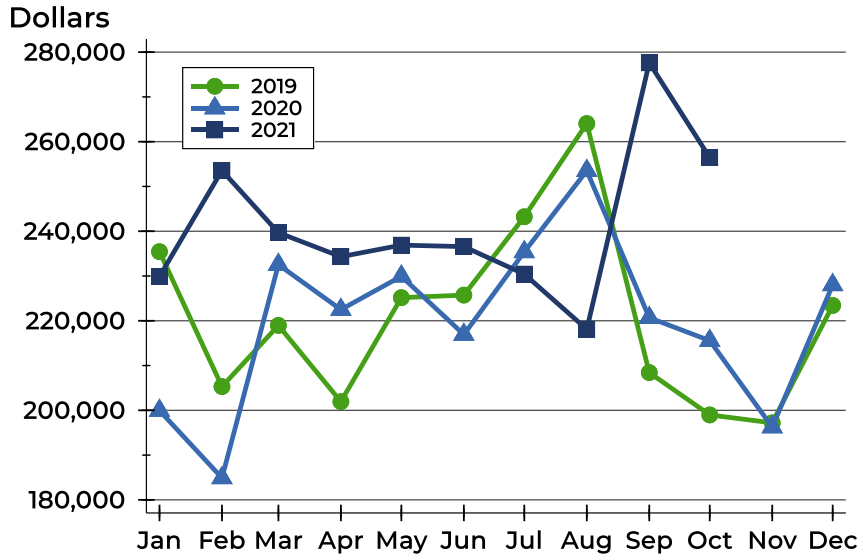
Contracts Written by Price Range

Price Range	Contracts Written		List Price		Days on Market		Price as % of Orig.	
	Number	Percent	Average	Median	Avg.	Med.	Avg.	Med.
Below \$25,000	0	0.0%	N/A	N/A	N/A	N/A	N/A	N/A
\$25,000-\$49,999	0	0.0%	N/A	N/A	N/A	N/A	N/A	N/A
\$50,000-\$99,999	4	4.4%	88,625	92,500	75	73	82.1%	85.3%
\$100,000-\$124,999	4	4.4%	111,475	113,200	62	67	100.0%	100.0%
\$125,000-\$149,999	10	11.0%	137,670	137,450	46	40	93.6%	97.3%
\$150,000-\$174,999	12	13.2%	165,942	166,500	39	21	97.9%	100.0%
\$175,000-\$199,999	12	13.2%	184,142	185,000	44	26	94.1%	98.6%
\$200,000-\$249,999	18	19.8%	226,008	226,000	57	43	97.2%	97.1%
\$250,000-\$299,999	7	7.7%	278,543	275,000	37	12	98.6%	100.0%
\$300,000-\$399,999	14	15.4%	352,661	351,250	23	11	99.1%	100.0%
\$400,000-\$499,999	4	4.4%	451,000	462,000	35	33	99.9%	100.0%
\$500,000-\$749,999	4	4.4%	607,225	595,000	6	5	100.0%	100.0%
\$750,000-\$999,999	2	2.2%	885,000	885,000	55	55	89.8%	89.8%
\$1,000,000 and up	0	0.0%	N/A	N/A	N/A	N/A	N/A	N/A



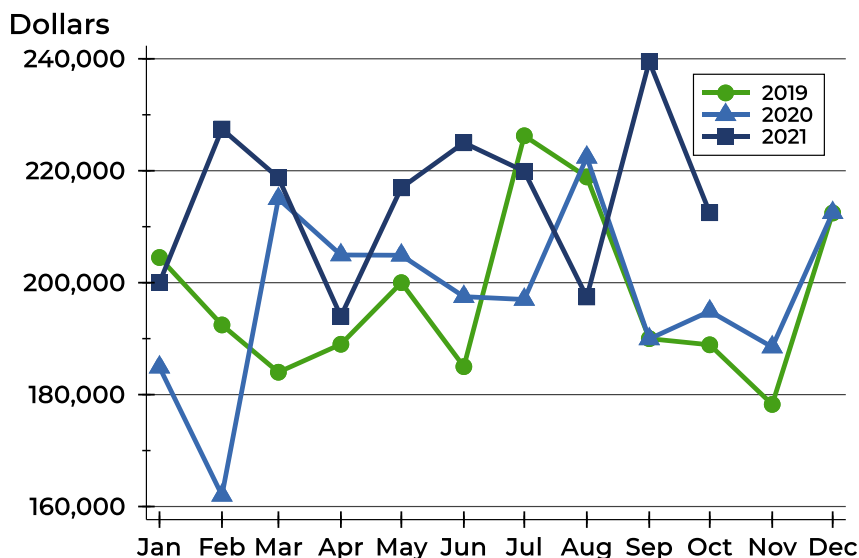
Riley County Contracts Written Analysis

Average Price



Month	2019	2020	2021
January	235,443	199,955	229,883
February	205,311	184,907	253,566
March	218,969	232,539	239,683
April	201,938	222,503	234,318
May	225,163	229,933	236,900
June	225,740	216,930	236,566
July	243,232	235,391	230,434
August	264,059	253,520	218,103
September	208,434	220,682	277,615
October	198,975	215,569	256,442
November	197,207	196,256	
December	223,432	228,017	

Median Price

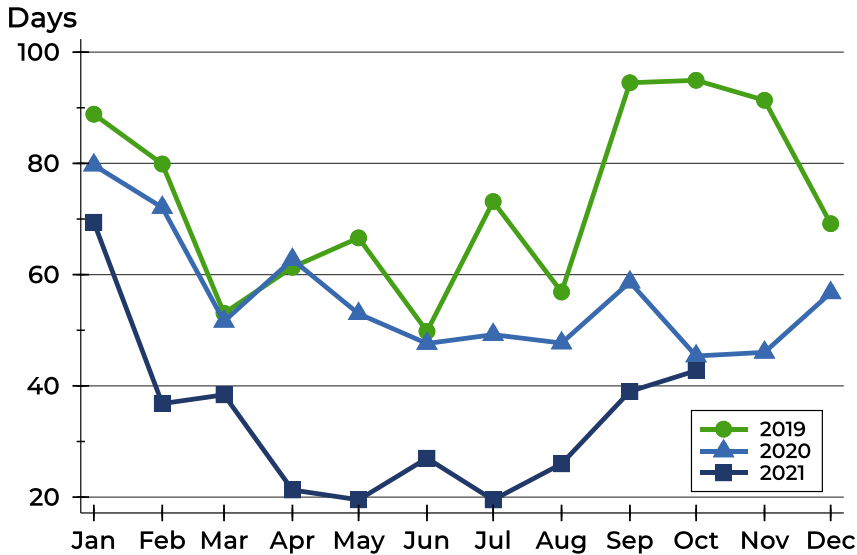


Month	2019	2020	2021
January	204,500	184,900	200,000
February	192,450	162,000	227,450
March	184,000	215,000	218,750
April	189,000	204,950	194,000
May	200,000	204,900	216,950
June	185,000	197,500	225,000
July	226,250	197,000	219,900
August	218,900	222,400	197,450
September	190,000	189,950	239,500
October	188,900	194,900	212,500
November	178,250	188,500	
December	212,450	212,500	



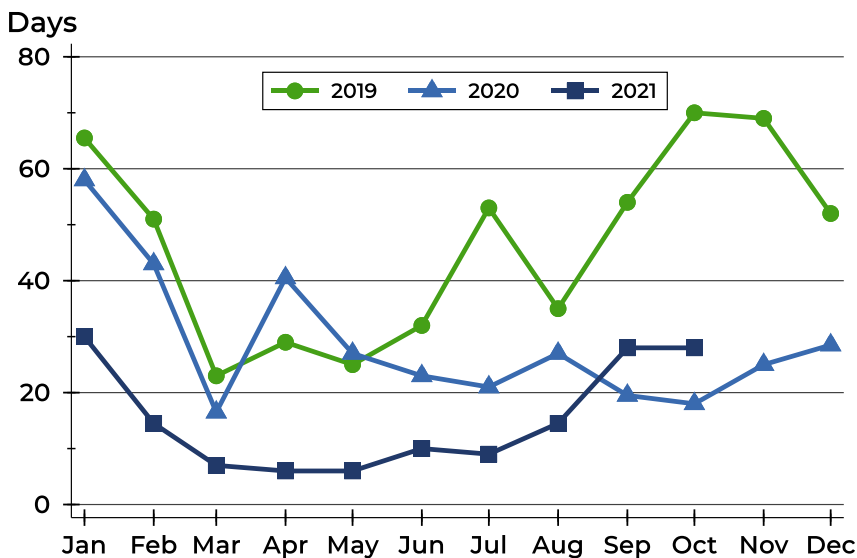
Riley County Contracts Written Analysis

Average DOM



Month	2019	2020	2021
January	89	80	69
February	80	72	37
March	53	52	38
April	61	63	21
May	67	53	20
June	50	48	27
July	73	49	20
August	57	48	26
September	94	59	39
October	95	45	43
November	91	46	
December	69	57	

Median DOM



Month	2019	2020	2021
January	66	58	30
February	51	43	15
March	23	17	7
April	29	41	6
May	25	27	6
June	32	23	10
July	53	21	9
August	35	27	15
September	54	20	28
October	70	18	28
November	69	25	
December	52	29	



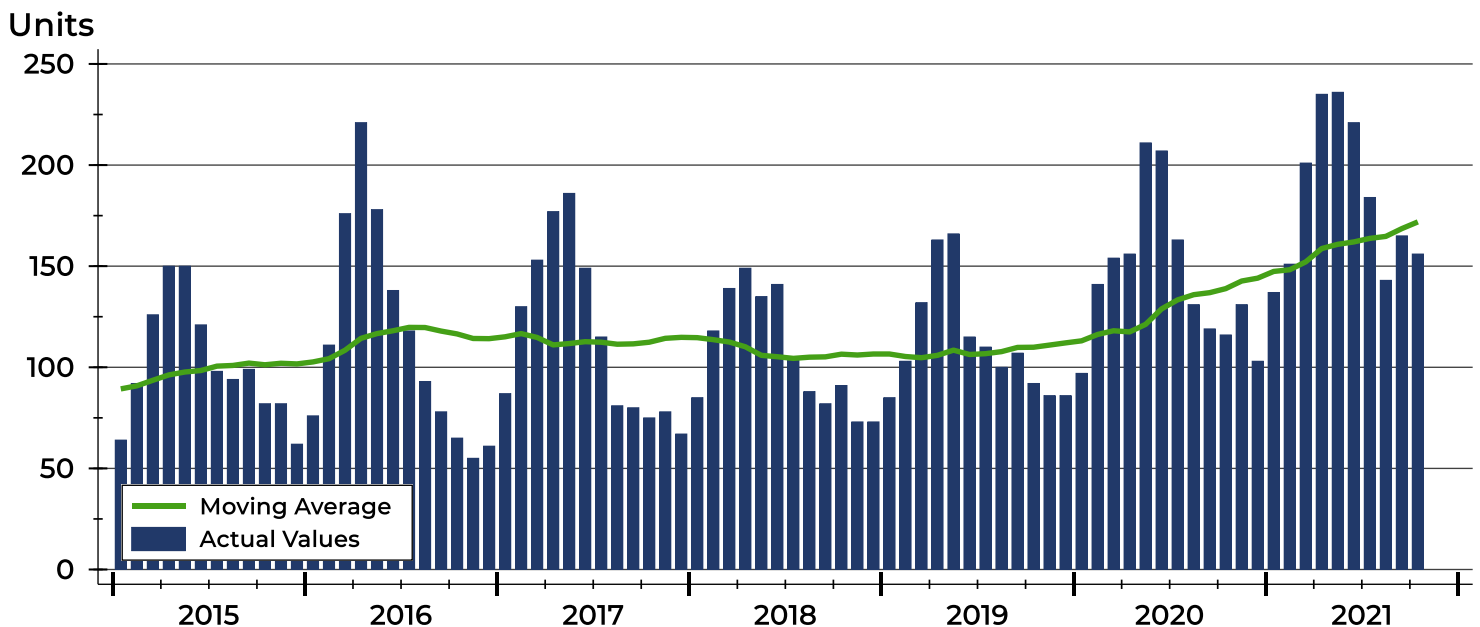
Riley County Pending Contracts Analysis

Summary Statistics for Pending Contracts		End of October		
		2021	2020	Change
Pending Contracts		156	116	34.5%
Volume (1,000s)		42,601	26,121	63.1%
Average	List Price	273,085	225,181	21.3%
	Days on Market	39	48	-18.8%
	Percent of Original	98.3%	98.2%	0.1%
Median	List Price	228,450	202,498	12.8%
	Days on Market	25	19	31.6%
	Percent of Original	100.0%	100.0%	0.0%

A total of 156 listings in Riley County had contracts pending at the end of October, up from 116 contracts pending at the end of October 2020.

Pending contracts reflect listings with a contract in place at the end of the month. In contrast, contracts written measures the number of listings put under contract during the month.

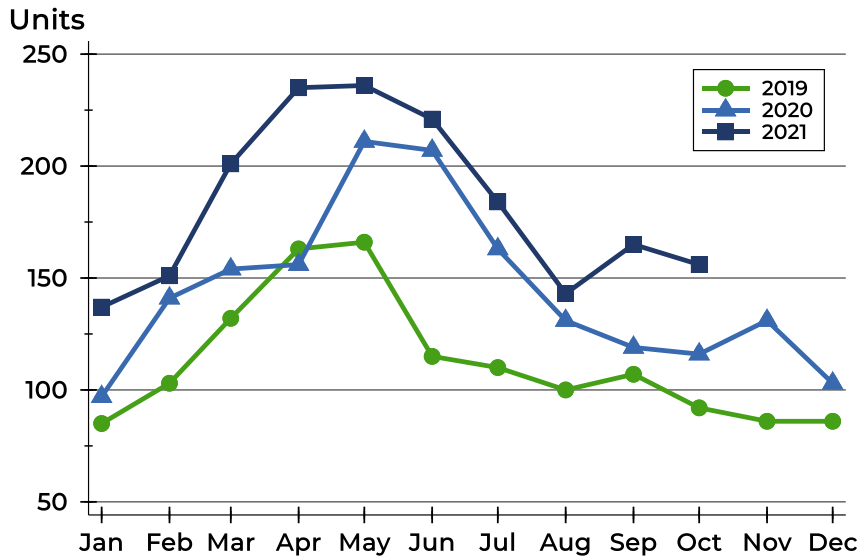
History of Pending Contracts





Riley County Pending Contracts Analysis

Pending Contracts by Month



Month	2019	2020	2021
January	85	97	137
February	103	141	151
March	132	154	201
April	163	156	235
May	166	211	236
June	115	207	221
July	110	163	184
August	100	131	143
September	107	119	165
October	92	116	156
November	86	131	
December	86	103	

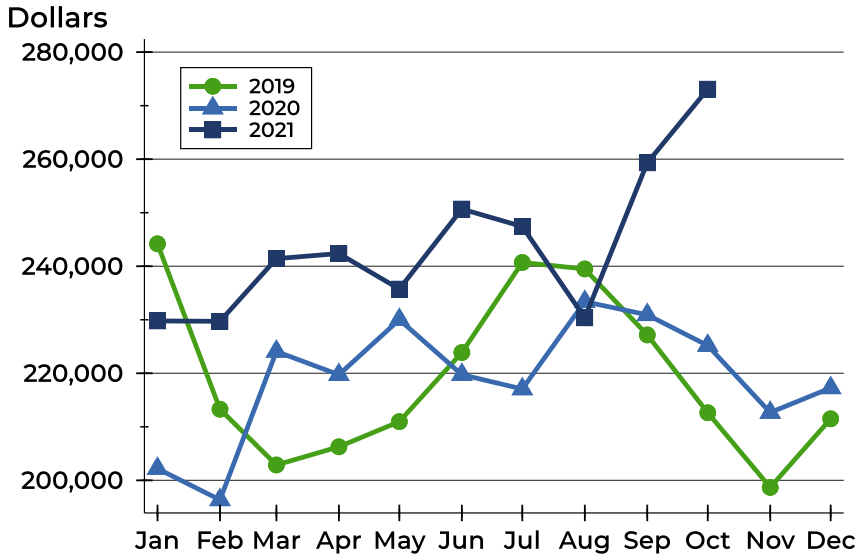
Pending Contracts by Price Range

Price Range	Pending Contracts		List Price		Days on Market		Price as % of Orig.	
	Number	Percent	Average	Median	Avg.	Med.	Avg.	Med.
Below \$25,000	0	0.0%	N/A	N/A	N/A	N/A	N/A	N/A
\$25,000-\$49,999	0	0.0%	N/A	N/A	N/A	N/A	N/A	N/A
\$50,000-\$99,999	3	1.9%	97,167	97,000	77	101	99.7%	100.0%
\$100,000-\$124,999	5	3.2%	113,080	119,500	51	20	100.0%	100.0%
\$125,000-\$149,999	9	5.8%	138,489	139,900	35	16	96.8%	100.0%
\$150,000-\$174,999	21	13.5%	165,245	165,000	33	25	98.6%	100.0%
\$175,000-\$199,999	19	12.2%	184,526	185,000	35	24	95.6%	100.0%
\$200,000-\$249,999	37	23.7%	226,124	225,000	47	33	97.7%	99.4%
\$250,000-\$299,999	14	9.0%	279,871	280,000	35	18	98.8%	100.0%
\$300,000-\$399,999	32	20.5%	342,989	349,000	41	26	99.7%	100.0%
\$400,000-\$499,999	6	3.8%	449,932	460,000	42	37	99.0%	100.0%
\$500,000-\$749,999	7	4.5%	620,257	625,000	10	10	100.0%	100.0%
\$750,000-\$999,999	2	1.3%	885,000	885,000	55	55	95.2%	95.2%
\$1,000,000 and up	1	0.6%	1,450,000	1,450,000	28	28	100.0%	100.0%



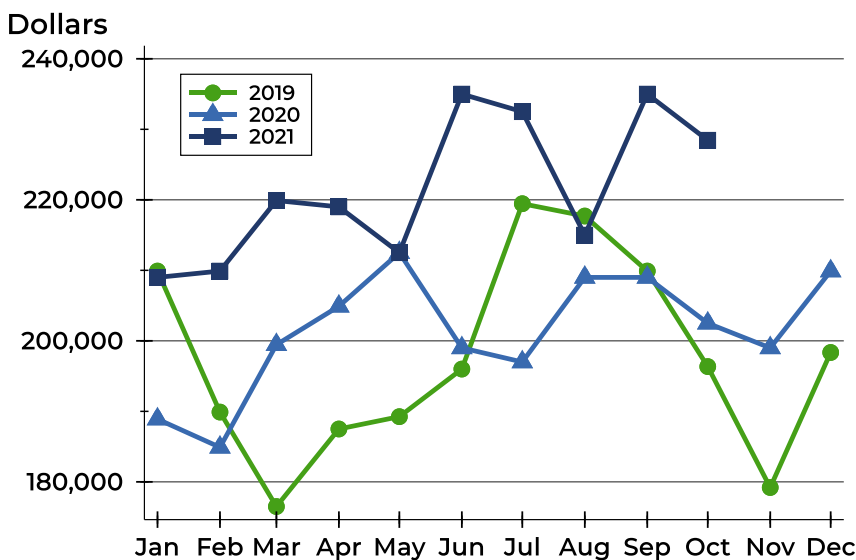
Riley County Pending Contracts Analysis

Average Price



Month	2019	2020	2021
January	244,194	202,199	229,781
February	213,292	196,352	229,712
March	202,871	224,078	241,420
April	206,271	219,735	242,377
May	210,969	230,029	235,738
June	223,881	219,742	250,688
July	240,706	217,070	247,424
August	239,497	233,377	230,364
September	227,173	230,927	259,319
October	212,632	225,181	273,085
November	198,680	212,669	
December	211,500	217,276	

Median Price

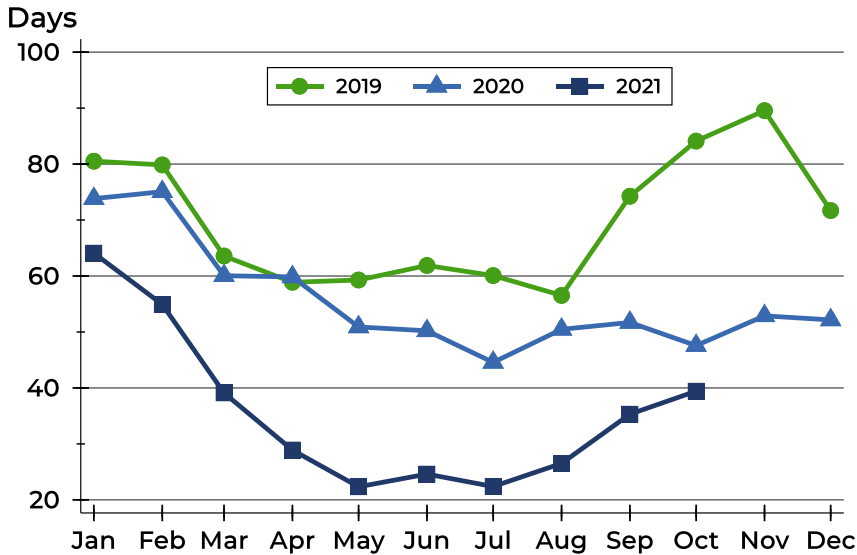


Month	2019	2020	2021
January	209,900	188,900	209,000
February	189,900	184,900	209,900
March	176,500	199,450	219,900
April	187,500	204,900	219,000
May	189,250	212,500	212,500
June	196,000	199,000	235,000
July	219,450	197,000	232,500
August	217,700	209,000	215,000
September	209,900	209,000	235,000
October	196,350	202,498	228,450
November	179,200	199,000	
December	198,350	209,900	



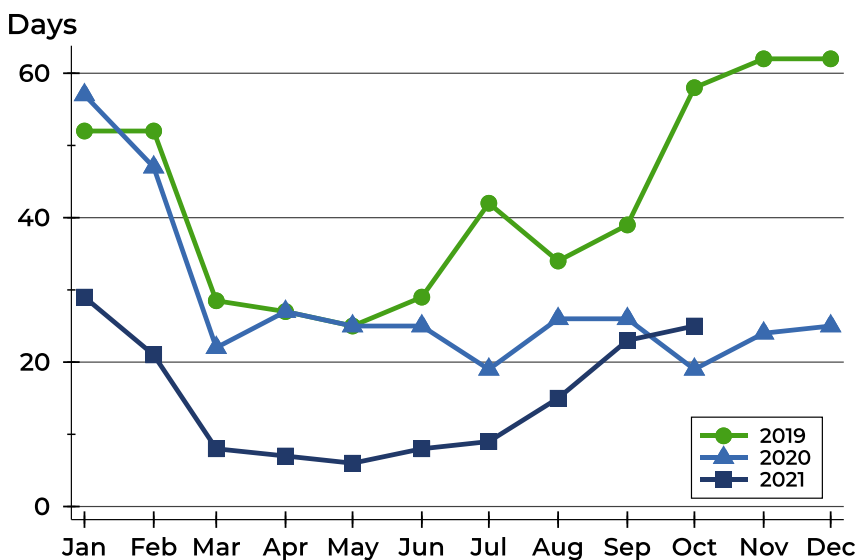
Riley County Pending Contracts Analysis

Average DOM



Month	2019	2020	2021
January	81	74	64
February	80	75	55
March	64	60	39
April	59	60	29
May	59	51	22
June	62	50	25
July	60	45	22
August	57	50	27
September	74	52	35
October	84	48	39
November	90	53	
December	72	52	

Median DOM



Month	2019	2020	2021
January	52	57	29
February	52	47	21
March	29	22	8
April	27	27	7
May	25	25	6
June	29	25	8
July	42	19	9
August	34	26	15
September	39	26	23
October	58	19	25
November	62	24	
December	62	25	