



## Riley County Housing Report



### Market Overview

#### Riley County Home Sales Rose in November

Total home sales in Riley County rose by 50.8% last month to 89 units, compared to 59 units in November 2020. Total sales volume was \$23.3 million, up 77.1% from a year earlier.

The median sale price in November was \$230,000, up from \$205,000 a year earlier. Homes that sold in November were typically on the market for 32 days and sold for 100.0% of their list prices.

#### Riley County Active Listings Down at End of November

The total number of active listings in Riley County at the end of November was 153 units, down from 205 at the same point in 2020. This represents a 1.6 months' supply of homes available for sale. The median list price of homes on the market at the end of November was \$236,000.

During November, a total of 77 contracts were written up from 72 in November 2020. At the end of the month, there were 129 contracts still pending.

### Report Contents

- Summary Statistics – Page 2
- Closed Listing Analysis – Page 3
- Active Listings Analysis – Page 7
- Months' Supply Analysis – Page 11
- New Listings Analysis – Page 12
- Contracts Written Analysis – Page 15
- Pending Contracts Analysis – Page 19

### Contact Information

Margaret Pendleton, Association Executive  
 Flint Hills Association of REALTORS®  
 205 S. Seth Child Road  
 Manhattan, KS 66502  
 685-776-1212  
[ae@flinthillsrealtors.net](mailto:ae@flinthillsrealtors.net)  
[www.flinthillsrealtors.net](http://www.flinthillsrealtors.net)



## Riley County Summary Statistics

November MLS Statistics Three-year History		Current Month			Year-to-Date		
		2021	2020	2019	2021	2020	2019
<b>Home Sales</b>		<b>89</b>	<b>59</b>	<b>57</b>	<b>1,038</b>	<b>870</b>	<b>735</b>
Change from prior year		50.8%	3.5%	0.0%	19.3%	18.4%	0.1%
<b>Active Listings</b>		<b>153</b>	<b>205</b>	<b>320</b>	<b>N/A</b>	<b>N/A</b>	<b>N/A</b>
Change from prior year		-25.4%	-35.9%	-8.8%			
<b>Months' Supply</b>		<b>1.6</b>	<b>2.7</b>	<b>4.9</b>	<b>N/A</b>	<b>N/A</b>	<b>N/A</b>
Change from prior year		-40.7%	-44.9%	-7.5%			
<b>New Listings</b>		<b>63</b>	<b>65</b>	<b>73</b>	<b>1,233</b>	<b>1,134</b>	<b>1,210</b>
Change from prior year		-3.1%	-11.0%	25.9%	8.7%	-6.3%	-2.4%
<b>Contracts Written</b>		<b>77</b>	<b>72</b>	<b>52</b>	<b>1,078</b>	<b>913</b>	<b>753</b>
Change from prior year		6.9%	38.5%	23.8%	18.1%	21.2%	0.8%
<b>Pending Contracts</b>		<b>129</b>	<b>131</b>	<b>86</b>	<b>N/A</b>	<b>N/A</b>	<b>N/A</b>
Change from prior year		-1.5%	52.3%	17.8%			
<b>Sales Volume (1,000s)</b>		<b>23,294</b>	<b>13,156</b>	<b>12,396</b>	<b>244,765</b>	<b>187,917</b>	<b>160,702</b>
Change from prior year		77.1%	6.1%	-0.4%	30.3%	16.9%	3.4%
<b>Average</b>	<b>Sale Price</b>	<b>261,725</b>	<b>222,989</b>	<b>217,467</b>	<b>235,805</b>	<b>215,996</b>	<b>218,642</b>
	Change from prior year	17.4%	2.5%	-0.4%	9.2%	-1.2%	3.3%
	<b>List Price of Actives</b>	<b>280,248</b>	<b>256,881</b>	<b>240,309</b>	<b>N/A</b>	<b>N/A</b>	<b>N/A</b>
	Change from prior year	9.1%	6.9%	3.7%			
	<b>Days on Market</b>	<b>41</b>	<b>37</b>	<b>93</b>	<b>35</b>	<b>57</b>	<b>70</b>
Change from prior year	10.8%	-60.2%	16.3%	-38.6%	-18.6%	-1.4%	
<b>Percent of List</b>	<b>98.5%</b>	<b>97.9%</b>	<b>98.5%</b>	<b>99.2%</b>	<b>97.9%</b>	<b>97.5%</b>	
Change from prior year	0.6%	-0.6%	2.3%	1.3%	0.4%	0.3%	
<b>Percent of Original</b>	<b>96.7%</b>	<b>97.3%</b>	<b>94.9%</b>	<b>98.1%</b>	<b>96.0%</b>	<b>94.9%</b>	
Change from prior year	-0.6%	2.5%	1.9%	2.2%	1.2%	-0.6%	
<b>Median</b>	<b>Sale Price</b>	<b>230,000</b>	<b>205,000</b>	<b>200,000</b>	<b>213,513</b>	<b>194,000</b>	<b>195,000</b>
	Change from prior year	12.2%	2.5%	0.5%	10.1%	-0.5%	2.6%
	<b>List Price of Actives</b>	<b>236,000</b>	<b>194,000</b>	<b>188,000</b>	<b>N/A</b>	<b>N/A</b>	<b>N/A</b>
	Change from prior year	21.6%	3.2%	-3.6%			
	<b>Days on Market</b>	<b>32</b>	<b>17</b>	<b>57</b>	<b>12</b>	<b>28</b>	<b>42</b>
Change from prior year	88.2%	-70.2%	3.6%	-57.1%	-33.3%	2.4%	
<b>Percent of List</b>	<b>100.0%</b>	<b>99.1%</b>	<b>98.7%</b>	<b>100.0%</b>	<b>98.5%</b>	<b>98.2%</b>	
Change from prior year	0.9%	0.4%	0.9%	1.5%	0.3%	0.1%	
<b>Percent of Original</b>	<b>97.8%</b>	<b>97.9%</b>	<b>97.0%</b>	<b>99.8%</b>	<b>97.6%</b>	<b>96.9%</b>	
Change from prior year	-0.1%	0.9%	1.1%	2.3%	0.7%	0.4%	

Note: Year-to-date statistics cannot be calculated for Active Listings, Months' Supply and Pending Contracts.



## Riley County Closed Listings Analysis

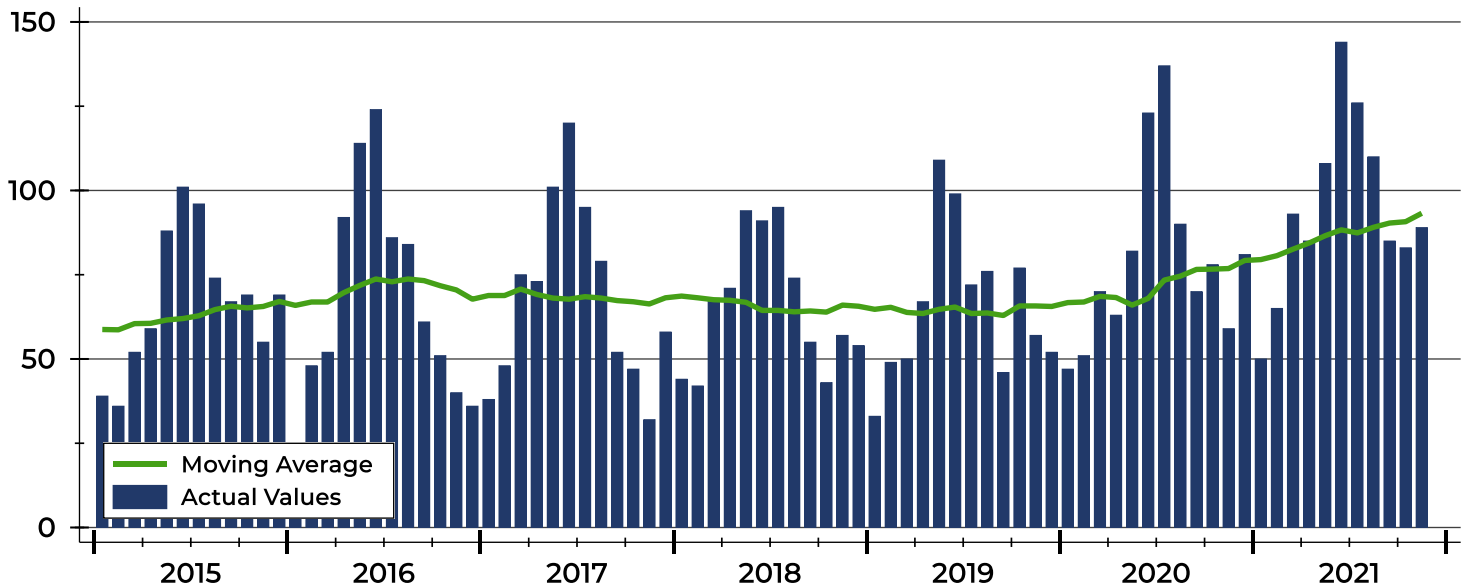
Summary Statistics for Closed Listings		2021	November 2020	Change	2021	Year-to-Date 2020	Change
Closed Listings		<b>89</b>	59	50.8%	<b>1,038</b>	870	19.3%
Volume (1,000s)		<b>23,294</b>	13,156	77.1%	<b>244,765</b>	187,917	30.3%
Months' Supply		<b>1.6</b>	2.7	-40.7%	<b>N/A</b>	N/A	N/A
Average	Sale Price	<b>261,725</b>	222,989	17.4%	<b>235,805</b>	215,996	9.2%
	Days on Market	<b>41</b>	37	10.8%	<b>35</b>	57	-38.6%
	Percent of List	<b>98.5%</b>	97.9%	0.6%	<b>99.2%</b>	97.9%	1.3%
	Percent of Original	<b>96.7%</b>	97.3%	-0.6%	<b>98.1%</b>	96.0%	2.2%
Median	Sale Price	<b>230,000</b>	205,000	12.2%	<b>213,513</b>	194,000	10.1%
	Days on Market	<b>32</b>	17	88.2%	<b>12</b>	28	-57.1%
	Percent of List	<b>100.0%</b>	99.1%	0.9%	<b>100.0%</b>	98.5%	1.5%
	Percent of Original	<b>97.8%</b>	97.9%	-0.1%	<b>99.8%</b>	97.6%	2.3%

A total of 89 homes sold in Riley County in November, up from 59 units in November 2020. Total sales volume rose to \$23.3 million compared to \$13.2 million in the previous year.

The median sales price in November was \$230,000, up 12.2% compared to the prior year. Median days on market was 32 days, up from 22 days in October, and up from 17 in November 2020.

## History of Closed Listings

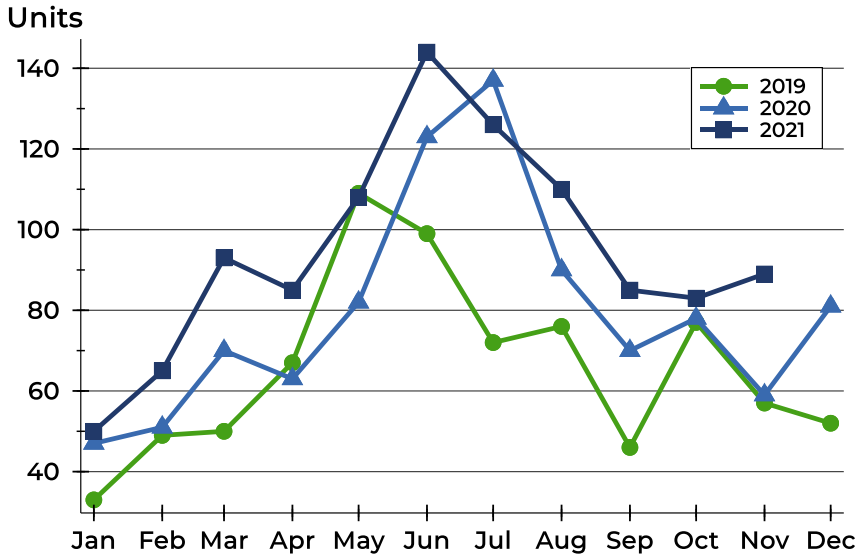
Units





## Riley County Closed Listings Analysis

### Closed Listings by Month



Month	2019	2020	2021
January	33	47	50
February	49	51	65
March	50	70	93
April	67	63	85
May	109	82	108
June	99	123	144
July	72	137	126
August	76	90	110
September	46	70	85
October	77	78	83
November	57	59	89
December	52	81	

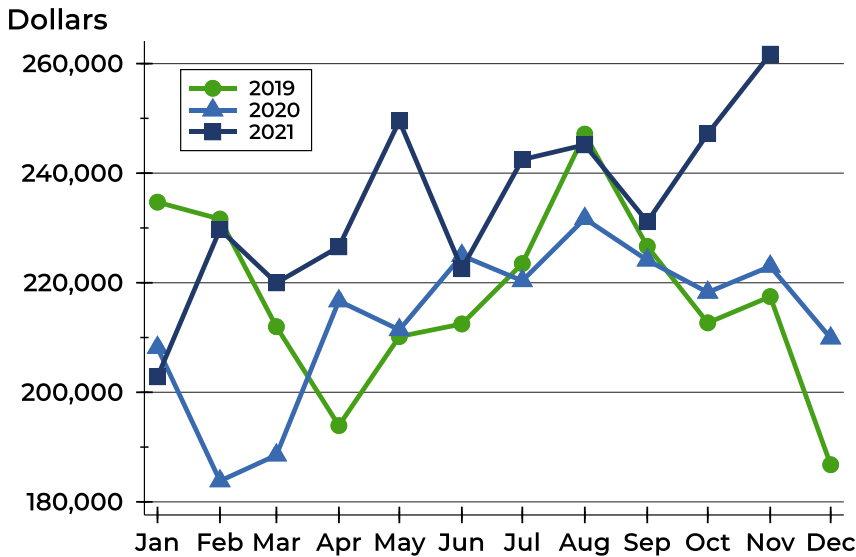
### Closed Listings by Price Range

Price Range	Sales		Months' Supply	Sale Price		Days on Market		Price as % of List		Price as % of Orig.	
	Number	Percent		Average	Median	Avg.	Med.	Avg.	Med.	Avg.	Med.
Below \$25,000	0	0.0%	N/A	N/A	N/A	N/A	N/A	N/A	N/A	N/A	N/A
\$25,000-\$49,999	0	0.0%	N/A	N/A	N/A	N/A	N/A	N/A	N/A	N/A	N/A
\$50,000-\$99,999	2	2.2%	1.8	75,000	75,000	76	76	94.1%	94.1%	91.6%	91.6%
\$100,000-\$124,999	3	3.4%	2.4	108,667	106,000	21	5	98.9%	100.0%	97.5%	100.0%
\$125,000-\$149,999	6	6.7%	1.5	135,983	136,200	50	53	95.3%	95.9%	90.6%	90.6%
\$150,000-\$174,999	11	12.4%	1.5	161,564	158,700	29	13	98.1%	99.1%	97.0%	97.1%
\$175,000-\$199,999	8	9.0%	1.0	182,938	181,000	41	35	98.4%	98.7%	92.2%	96.6%
\$200,000-\$249,999	21	23.6%	1.1	220,477	220,000	58	38	98.5%	99.8%	95.4%	95.2%
\$250,000-\$299,999	12	13.5%	1.5	280,033	282,000	39	34	98.8%	100.0%	97.0%	100.0%
\$300,000-\$399,999	19	21.3%	1.9	328,179	317,600	30	13	99.8%	100.0%	101.8%	100.0%
\$400,000-\$499,999	3	3.4%	4.0	448,400	465,000	48	63	99.3%	100.0%	97.4%	97.9%
\$500,000-\$749,999	3	3.4%	2.4	608,300	625,000	30	18	99.2%	100.0%	99.2%	100.0%
\$750,000-\$999,999	0	0.0%	N/A	N/A	N/A	N/A	N/A	N/A	N/A	N/A	N/A
\$1,000,000 and up	1	1.1%	36.0	1,365,000	1,365,000	28	28	94.1%	94.1%	94.1%	94.1%



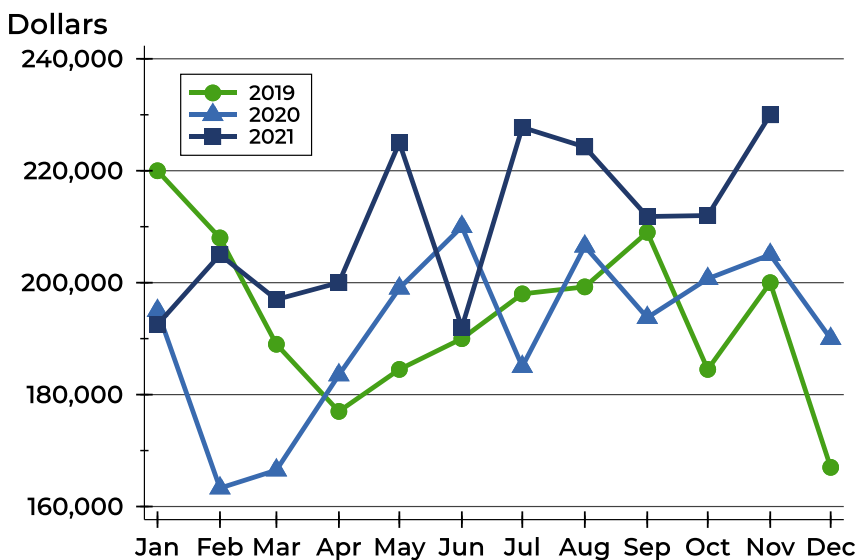
## Riley County Closed Listings Analysis

### Average Price



Month	2019	2020	2021
<b>January</b>	234,709	208,157	<b>202,830</b>
<b>February</b>	231,624	183,819	<b>229,715</b>
<b>March</b>	211,977	188,530	<b>219,973</b>
<b>April</b>	193,922	216,671	<b>226,550</b>
<b>May</b>	210,177	211,400	<b>249,527</b>
<b>June</b>	212,476	224,955	<b>222,557</b>
<b>July</b>	223,492	220,343	<b>242,486</b>
<b>August</b>	247,130	231,701	<b>245,172</b>
<b>September</b>	226,639	224,114	<b>231,140</b>
<b>October</b>	212,680	218,236	<b>247,212</b>
<b>November</b>	217,467	222,989	<b>261,725</b>
<b>December</b>	186,779	209,890	

### Median Price

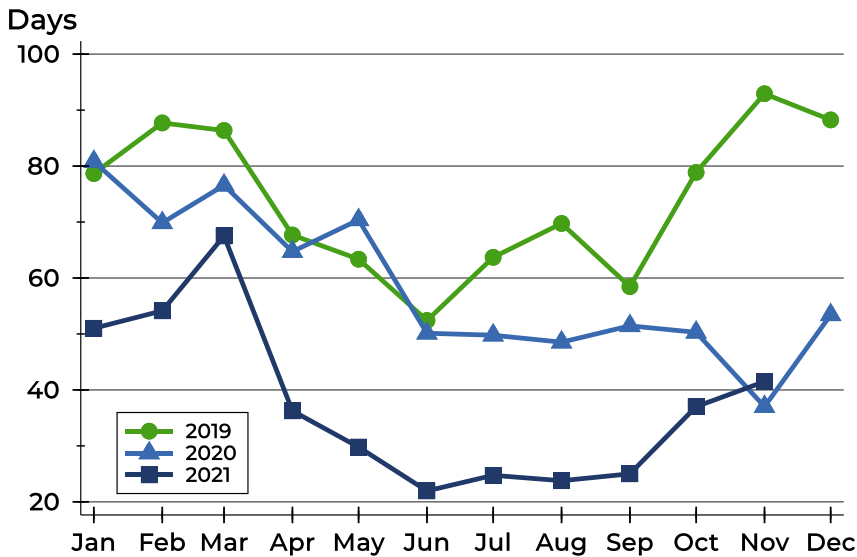


Month	2019	2020	2021
<b>January</b>	220,000	195,000	<b>192,500</b>
<b>February</b>	208,000	163,295	<b>205,000</b>
<b>March</b>	189,000	166,500	<b>197,000</b>
<b>April</b>	177,000	183,500	<b>200,000</b>
<b>May</b>	184,500	199,000	<b>225,000</b>
<b>June</b>	190,000	210,000	<b>192,000</b>
<b>July</b>	198,000	185,000	<b>227,750</b>
<b>August</b>	199,250	206,500	<b>224,250</b>
<b>September</b>	209,000	193,750	<b>211,819</b>
<b>October</b>	184,500	200,700	<b>212,000</b>
<b>November</b>	200,000	205,000	<b>230,000</b>
<b>December</b>	167,000	190,000	



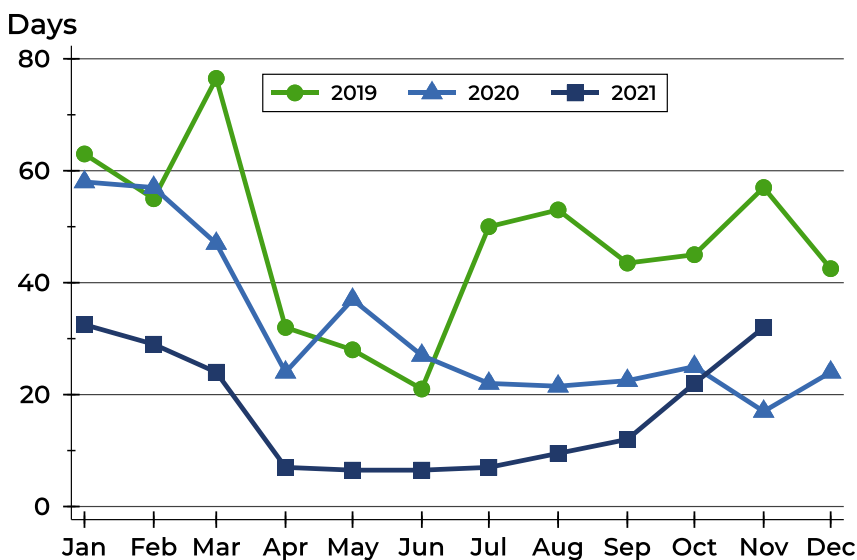
## Riley County Closed Listings Analysis

### Average DOM



Month	2019	2020	2021
January	79	81	51
February	88	70	54
March	86	77	68
April	68	65	36
May	63	70	30
June	52	50	22
July	64	50	25
August	70	49	24
September	58	51	25
October	79	50	37
November	93	37	41
December	88	53	

### Median DOM



Month	2019	2020	2021
January	63	58	33
February	55	57	29
March	77	47	24
April	32	24	7
May	28	37	7
June	21	27	7
July	50	22	7
August	53	22	10
September	44	23	12
October	45	25	22
November	57	17	32
December	43	24	



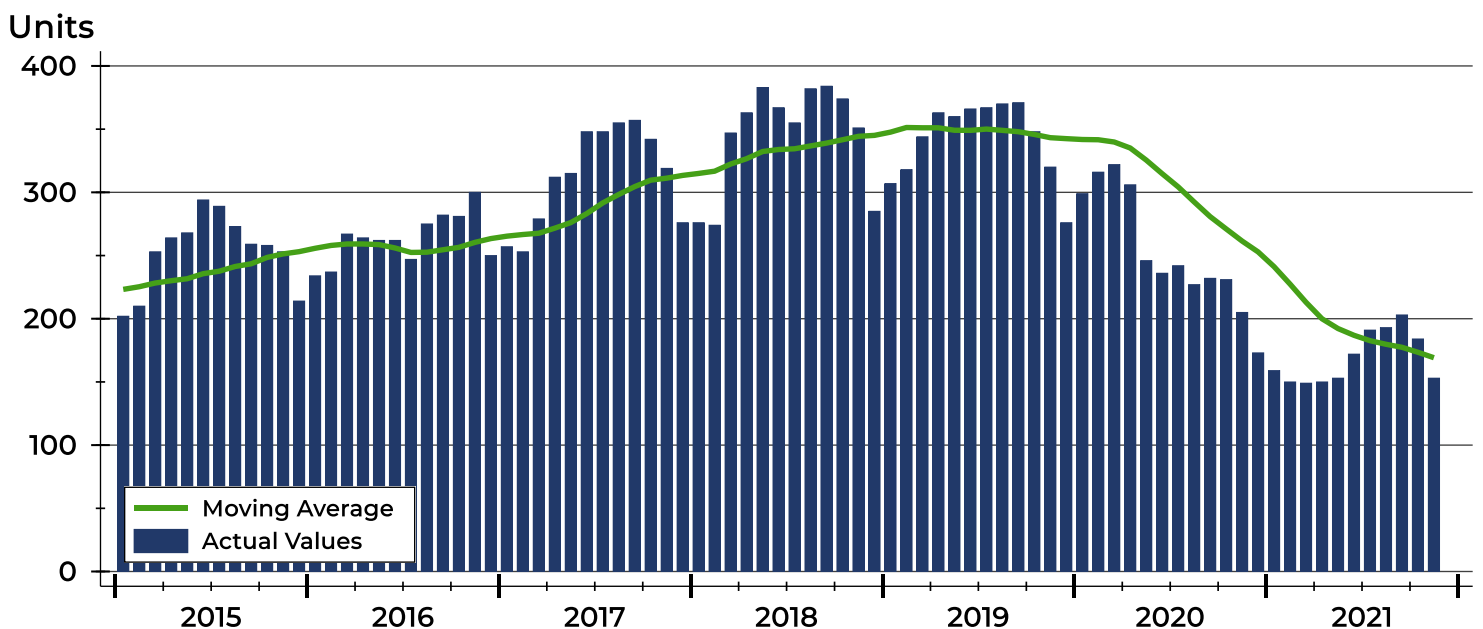
## Riley County Active Listings Analysis

Summary Statistics for Active Listings		2021	End of November 2020	Change
Active Listings		<b>153</b>	205	-25.4%
Volume (1,000s)		<b>42,878</b>	52,661	-18.6%
Months' Supply		<b>1.6</b>	2.7	-40.7%
Average	List Price	<b>280,248</b>	256,881	9.1%
	Days on Market	<b>96</b>	105	-8.6%
	Percent of Original	<b>97.5%</b>	97.2%	0.3%
Median	List Price	<b>236,000</b>	194,000	21.6%
	Days on Market	<b>64</b>	68	-5.9%
	Percent of Original	<b>100.0%</b>	100.0%	0.0%

A total of 153 homes were available for sale in Riley County at the end of November. This represents a 1.6 months' supply of active listings.

The median list price of homes on the market at the end of November was \$236,000, up 21.6% from 2020. The typical time on market for active listings was 64 days, down from 68 days a year earlier.

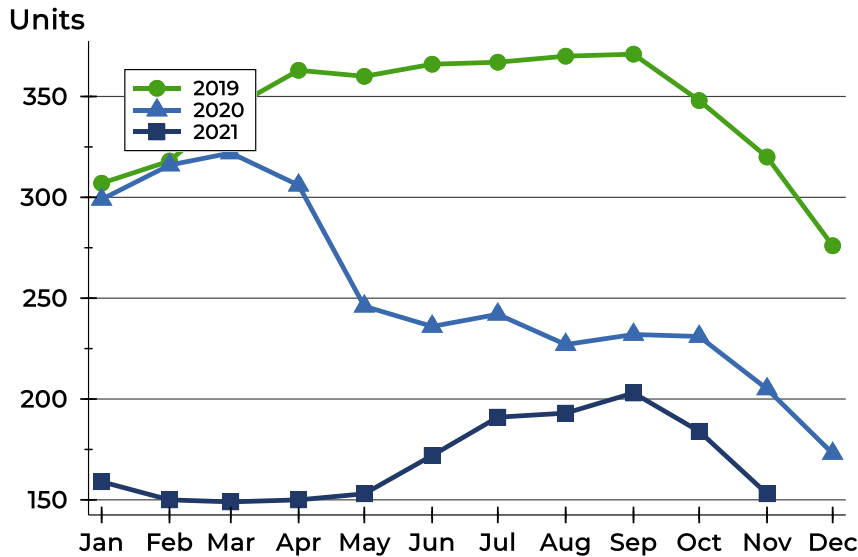
## History of Active Listings





## Riley County Active Listings Analysis

### Active Listings by Month



Month	2019	2020	2021
<b>January</b>	307	299	<b>159</b>
<b>February</b>	318	316	<b>150</b>
<b>March</b>	344	322	<b>149</b>
<b>April</b>	363	306	<b>150</b>
<b>May</b>	360	246	<b>153</b>
<b>June</b>	366	236	<b>172</b>
<b>July</b>	367	242	<b>191</b>
<b>August</b>	370	227	<b>193</b>
<b>September</b>	371	232	<b>203</b>
<b>October</b>	348	231	<b>184</b>
<b>November</b>	320	205	<b>153</b>
<b>December</b>	276	173	

### Active Listings by Price Range

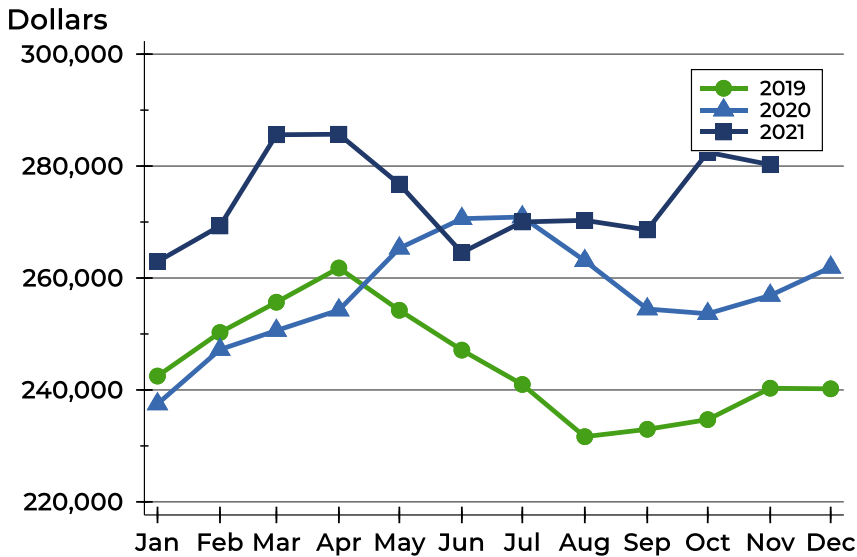
Price Range	Active Listings Number	Active Listings Percent	Months' Supply	List Price Average	List Price Median	Days on Market Avg.	Days on Market Med.	Price as % of Orig. Avg.	Price as % of Orig. Med.
Below \$25,000	1	0.7%	N/A	10,000	10,000	16	16	100.0%	100.0%
\$25,000-\$49,999	0	0.0%	N/A	N/A	N/A	N/A	N/A	N/A	N/A
\$50,000-\$99,999	7	4.6%	1.8	82,400	88,500	74	68	96.4%	100.0%
\$100,000-\$124,999	13	8.5%	2.4	113,977	115,000	78	84	94.7%	100.0%
\$125,000-\$149,999	14	9.2%	1.5	140,407	140,000	121	89	95.6%	99.7%
\$150,000-\$174,999	17	11.1%	1.5	160,888	158,000	66	58	97.1%	100.0%
\$175,000-\$199,999	12	7.8%	1.0	187,450	185,000	81	55	98.3%	100.0%
\$200,000-\$249,999	19	12.4%	1.1	227,316	228,000	134	69	97.9%	100.0%
\$250,000-\$299,999	18	11.8%	1.5	277,439	279,700	73	61	98.1%	100.0%
\$300,000-\$399,999	29	19.0%	1.9	341,263	335,000	102	77	98.7%	100.0%
\$400,000-\$499,999	12	7.8%	4.0	448,946	429,950	76	64	98.1%	100.0%
\$500,000-\$749,999	6	3.9%	2.4	565,733	549,950	48	27	100.8%	100.0%
\$750,000-\$999,999	2	1.3%	N/A	959,000	959,000	501	501	88.4%	88.4%
\$1,000,000 and up	3	2.0%	36.0	1,316,667	1,250,000	123	41	100.0%	100.0%





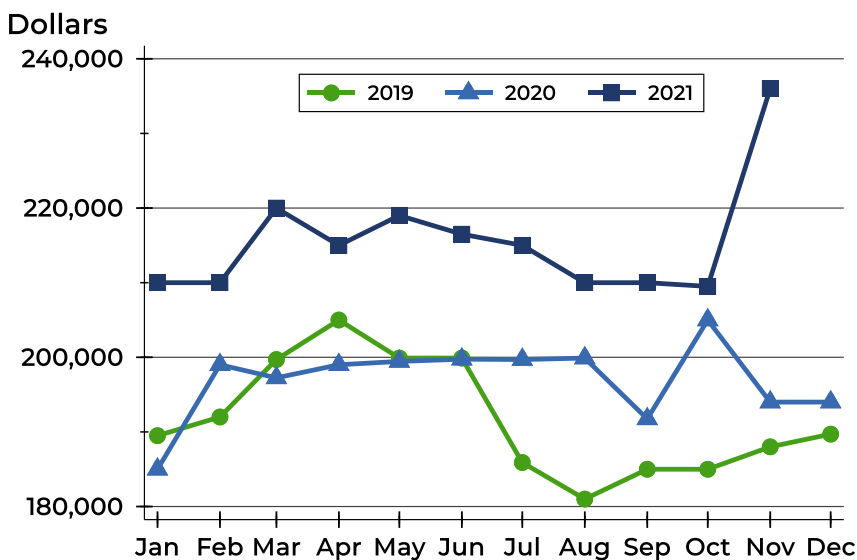
## Riley County Active Listings Analysis

### Average Price



Month	2019	2020	2021
January	242,482	237,490	<b>262,929</b>
February	250,264	247,217	<b>269,299</b>
March	255,674	250,613	<b>285,597</b>
April	261,789	254,270	<b>285,687</b>
May	254,240	265,322	<b>276,770</b>
June	247,115	270,600	<b>264,539</b>
July	240,981	270,904	<b>270,021</b>
August	231,649	263,083	<b>270,304</b>
September	232,972	254,462	<b>268,598</b>
October	234,698	253,619	<b>282,472</b>
November	240,309	256,881	<b>280,248</b>
December	240,202	261,905	

### Median Price

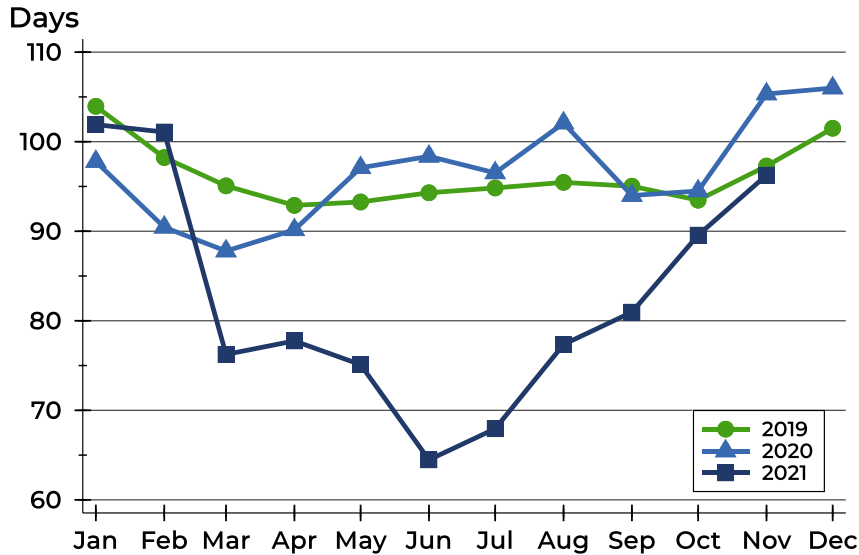


Month	2019	2020	2021
January	189,500	185,000	<b>210,000</b>
February	192,000	199,000	<b>210,000</b>
March	199,700	197,245	<b>220,000</b>
April	205,000	199,000	<b>215,000</b>
May	199,900	199,450	<b>219,000</b>
June	199,900	199,748	<b>216,500</b>
July	185,900	199,700	<b>215,000</b>
August	181,000	199,900	<b>210,000</b>
September	185,000	191,750	<b>210,000</b>
October	185,000	205,000	<b>209,500</b>
November	188,000	194,000	<b>236,000</b>
December	189,700	194,000	



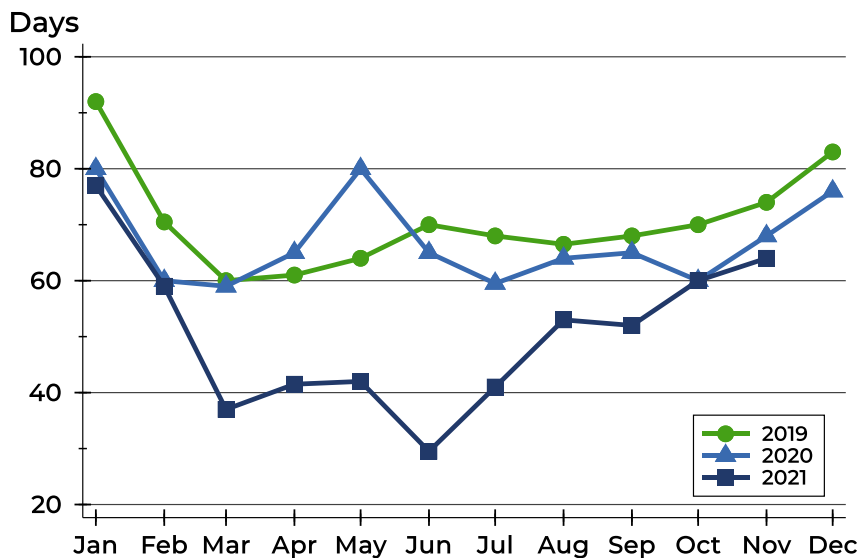
## Riley County Active Listings Analysis

### Average DOM



Month	2019	2020	2021
January	104	98	<b>102</b>
February	98	90	<b>101</b>
March	95	88	<b>76</b>
April	93	90	<b>78</b>
May	93	97	<b>75</b>
June	94	98	<b>64</b>
July	95	97	<b>68</b>
August	95	102	<b>77</b>
September	95	94	<b>81</b>
October	93	94	<b>90</b>
November	97	105	<b>96</b>
December	102	106	

### Median DOM

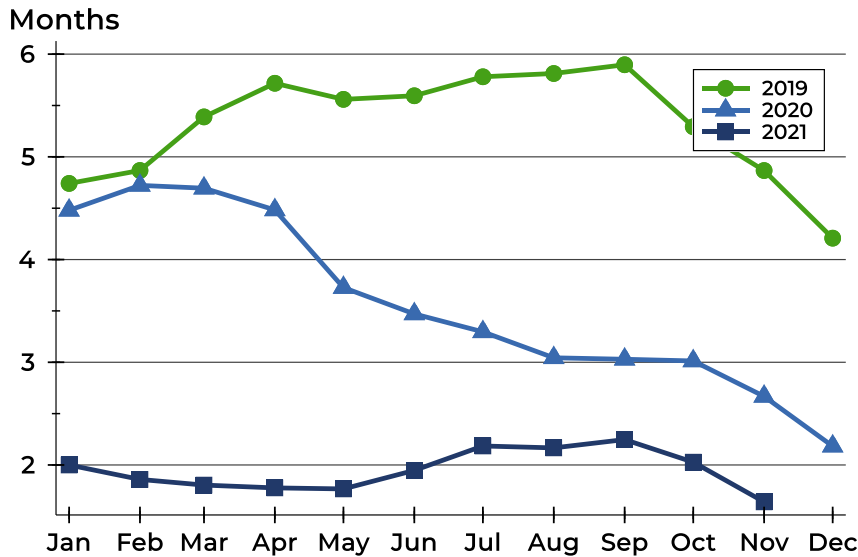


Month	2019	2020	2021
January	92	80	<b>77</b>
February	71	60	<b>59</b>
March	60	59	<b>37</b>
April	61	65	<b>42</b>
May	64	80	<b>42</b>
June	70	65	<b>30</b>
July	68	60	<b>41</b>
August	67	64	<b>53</b>
September	68	65	<b>52</b>
October	70	60	<b>60</b>
November	74	68	<b>64</b>
December	83	76	



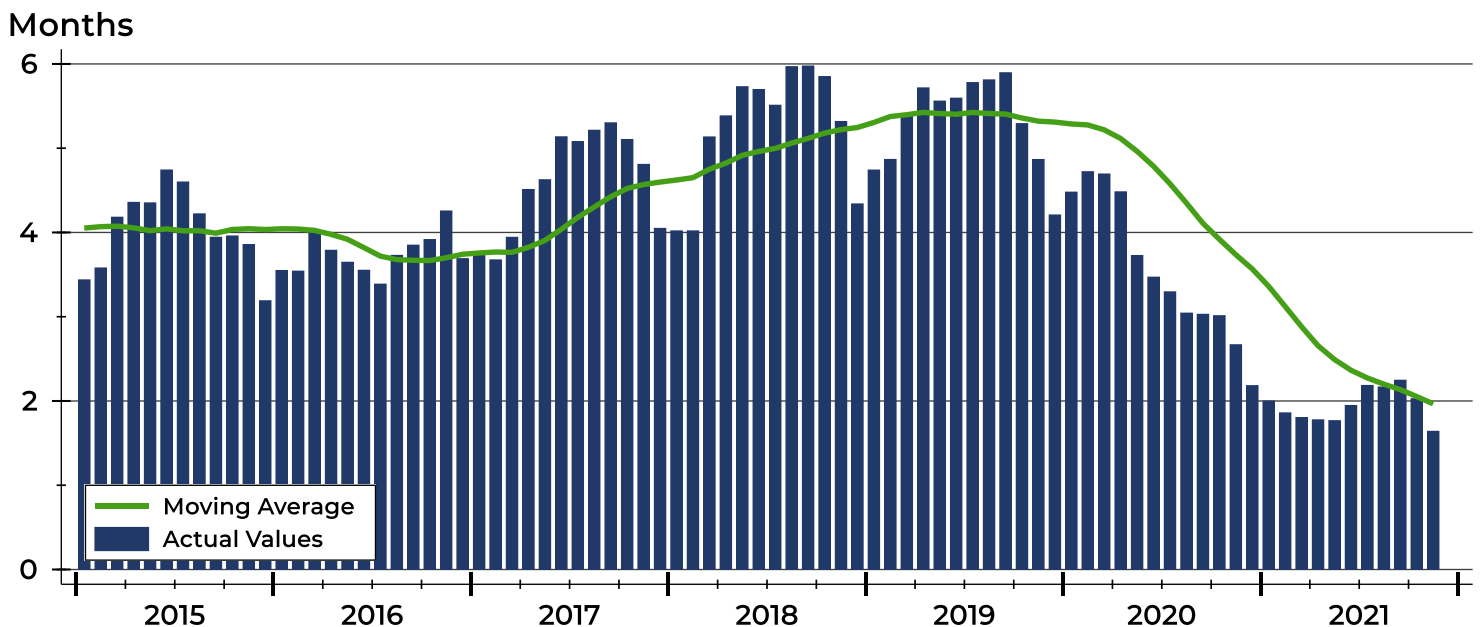
## Riley County Months' Supply Analysis

### Months' Supply by Month



Month	2019	2020	2021
January	4.7	4.5	<b>2.0</b>
February	4.9	4.7	<b>1.9</b>
March	5.4	4.7	<b>1.8</b>
April	5.7	4.5	<b>1.8</b>
May	5.6	3.7	<b>1.8</b>
June	5.6	3.5	<b>1.9</b>
July	5.8	3.3	<b>2.2</b>
August	5.8	3.0	<b>2.2</b>
September	5.9	3.0	<b>2.2</b>
October	5.3	3.0	<b>2.0</b>
November	4.9	2.7	<b>1.6</b>
December	4.2	2.2	

### History of Month's Supply





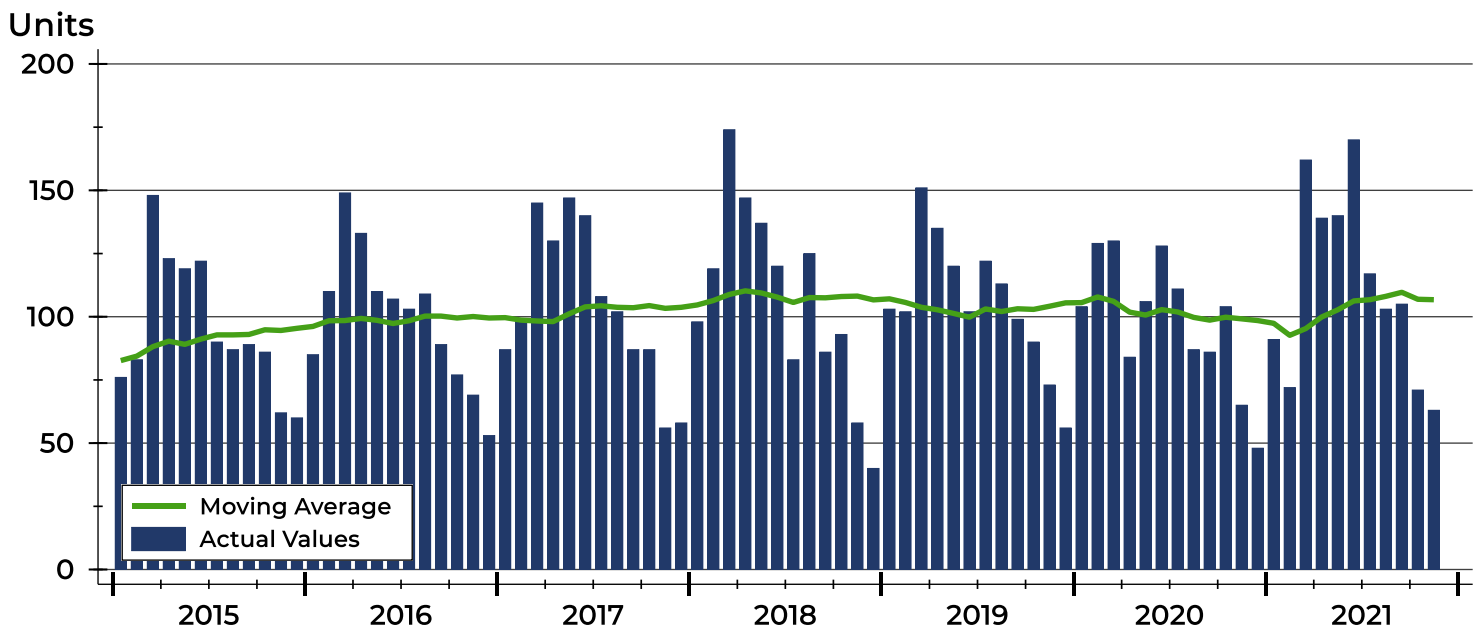
## Riley County New Listings Analysis

Summary Statistics for New Listings		2021	November 2020	Change
Current Month	New Listings	<b>63</b>	65	-3.1%
	Volume (1,000s)	<b>14,951</b>	14,172	5.5%
	Average List Price	<b>237,321</b>	218,030	8.8%
	Median List Price	<b>230,000</b>	185,500	24.0%
Year-to-Date	New Listings	<b>1,233</b>	1,134	8.7%
	Volume (1,000s)	<b>301,188</b>	256,306	17.5%
	Average List Price	<b>244,272</b>	226,019	8.1%
	Median List Price	<b>215,000</b>	195,000	10.3%

A total of 63 new listings were added in Riley County during November, down 3.1% from the same month in 2020. Year-to-date Riley County has seen 1,233 new listings.

The median list price of these homes was \$230,000 up from \$185,500 in 2020.

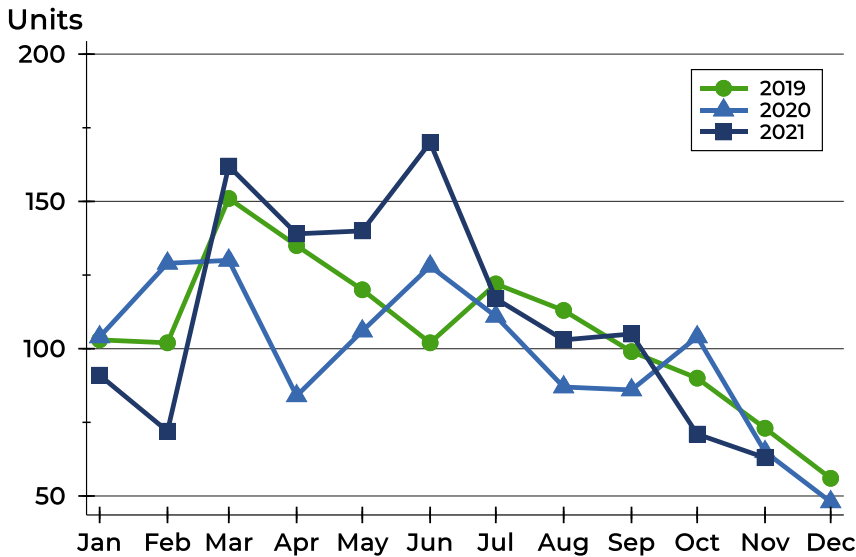
## History of New Listings





## Riley County New Listings Analysis

### New Listings by Month



Month	2019	2020	2021
January	103	104	91
February	102	129	72
March	151	130	162
April	135	84	139
May	120	106	140
June	102	128	170
July	122	111	117
August	113	87	103
September	99	86	105
October	90	104	71
November	73	65	63
December	56	48	

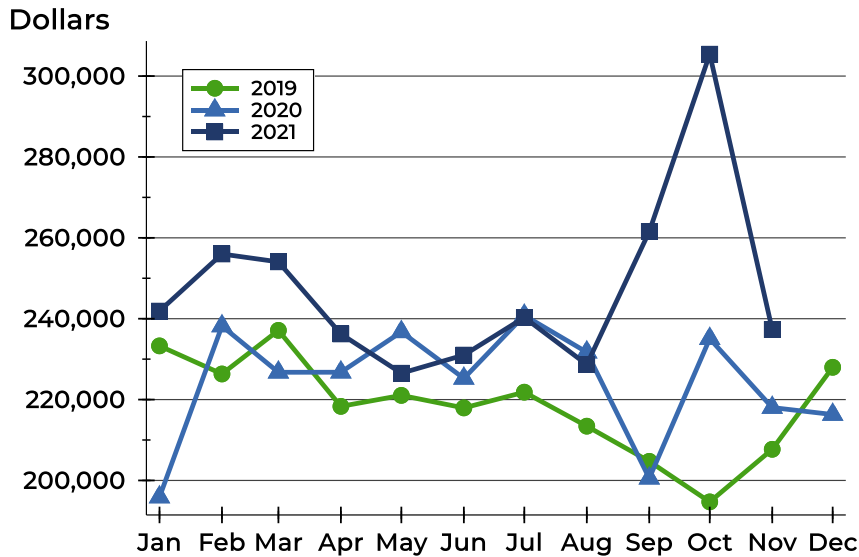
### New Listings by Price Range

Price Range	New Listings		List Price		Days on Market		Price as % of Orig.	
	Number	Percent	Average	Median	Avg.	Med.	Avg.	Med.
Below \$25,000	1	1.6%	10,000	10,000	21	21	100.0%	100.0%
\$25,000-\$49,999	0	0.0%	N/A	N/A	N/A	N/A	N/A	N/A
\$50,000-\$99,999	1	1.6%	55,000	55,000	35	35	94.8%	94.8%
\$100,000-\$124,999	2	3.2%	117,000	117,000	9	9	100.0%	100.0%
\$125,000-\$149,999	7	11.1%	138,700	140,000	12	10	100.0%	100.0%
\$150,000-\$174,999	6	9.5%	160,483	160,450	10	10	101.0%	100.0%
\$175,000-\$199,999	7	11.1%	183,786	185,000	13	9	100.0%	100.0%
\$200,000-\$249,999	15	23.8%	228,960	230,000	12	8	99.5%	100.0%
\$250,000-\$299,999	10	15.9%	284,580	287,500	9	4	101.0%	100.0%
\$300,000-\$399,999	10	15.9%	328,680	320,000	16	12	99.0%	100.0%
\$400,000-\$499,999	3	4.8%	444,967	429,900	19	20	100.0%	100.0%
\$500,000-\$749,999	1	1.6%	530,000	530,000	27	27	100.0%	100.0%
\$750,000-\$999,999	0	0.0%	N/A	N/A	N/A	N/A	N/A	N/A
\$1,000,000 and up	0	0.0%	N/A	N/A	N/A	N/A	N/A	N/A



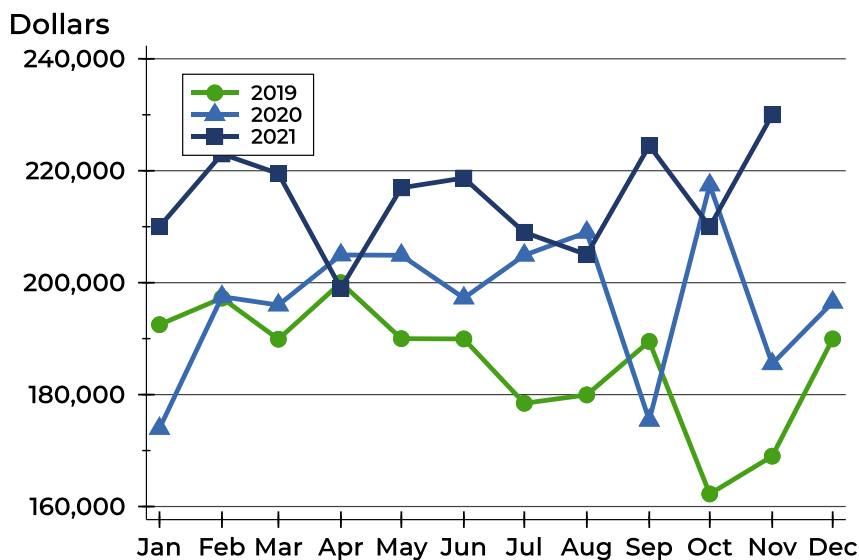
## Riley County New Listings Analysis

### Average Price



Month	2019	2020	2021
January	233,282	195,887	<b>241,888</b>
February	226,334	238,191	<b>256,004</b>
March	237,119	226,747	<b>254,059</b>
April	218,324	226,764	<b>236,225</b>
May	221,035	236,745	<b>226,526</b>
June	217,944	225,242	<b>231,010</b>
July	221,832	240,816	<b>240,298</b>
August	213,423	231,720	<b>228,658</b>
September	204,728	200,543	<b>261,547</b>
October	194,701	235,066	<b>305,425</b>
November	207,707	218,030	<b>237,321</b>
December	227,983	216,300	

### Median Price



Month	2019	2020	2021
January	192,500	173,950	210,000
February	197,250	197,500	223,000
March	189,900	196,000	219,500
April	200,000	204,948	199,000
May	190,000	204,900	216,950
June	189,950	197,250	218,700
July	178,450	204,900	209,000
August	179,950	209,000	205,000
September	189,500	175,400	224,500
October	162,250	217,450	209,999
November	169,000	185,500	<b>230,000</b>
December	189,950	196,500	



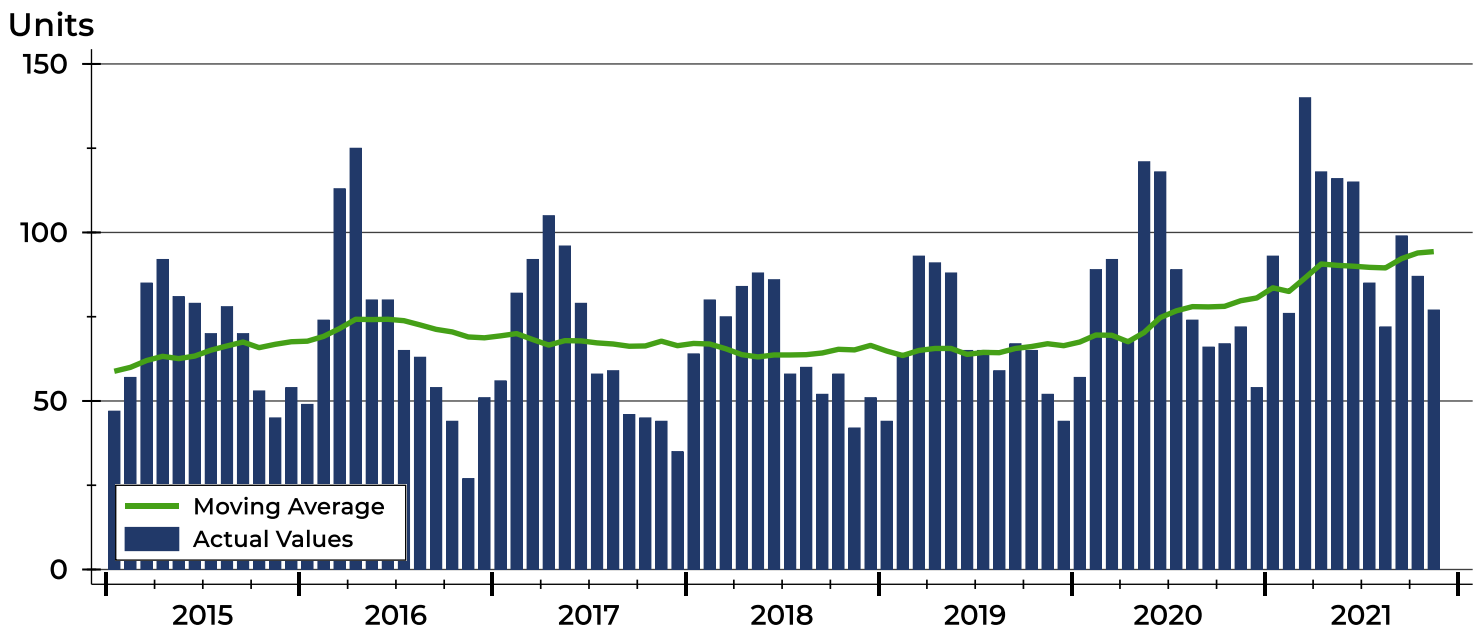
## Riley County Contracts Written Analysis

Summary Statistics for Contracts Written		November			Year-to-Date		
		2021	2020	Change	2021	2020	Change
Contracts Written		<b>77</b>	72	6.9%	<b>1,078</b>	913	18.1%
Volume (1,000s)		<b>19,492</b>	14,130	37.9%	<b>261,461</b>	200,646	30.3%
Average	Sale Price	<b>253,145</b>	196,256	29.0%	<b>242,542</b>	219,766	10.4%
	Days on Market	<b>41</b>	46	-10.9%	<b>34</b>	55	-38.2%
	Percent of Original	<b>97.5%</b>	94.7%	3.0%	<b>98.4%</b>	96.0%	2.5%
Median	Sale Price	<b>200,000</b>	188,500	6.1%	<b>215,000</b>	195,000	10.3%
	Days on Market	<b>21</b>	25	-16.0%	<b>11</b>	25	-56.0%
	Percent of Original	<b>100.0%</b>	96.6%	3.5%	<b>100.0%</b>	97.5%	2.6%

A total of 77 contracts for sale were written in Riley County during the month of November, up from 72 in 2020. The median list price of these homes was \$200,000, up from \$188,500 the prior year.

Half of the homes that went under contract in November were on the market less than 21 days, compared to 25 days in November 2020.

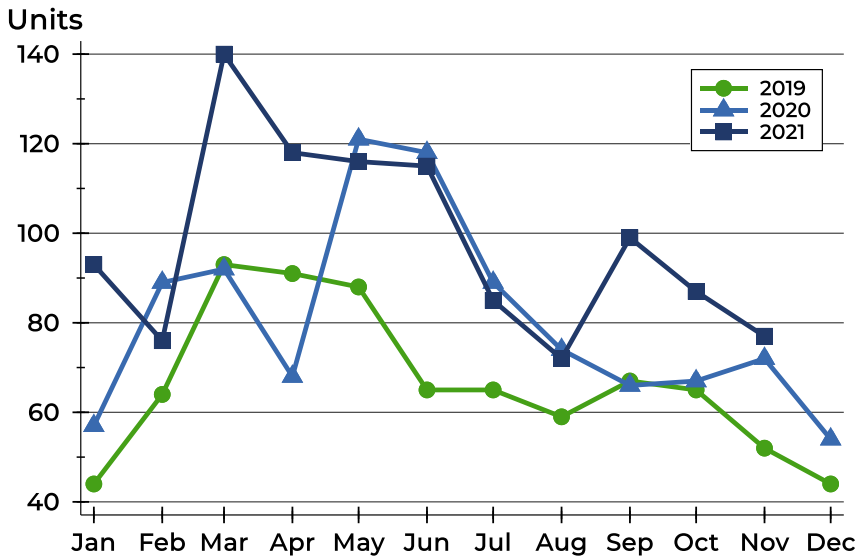
## History of Contracts Written





## Riley County Contracts Written Analysis

### Contracts Written by Month



Month	2019	2020	2021
January	44	57	<b>93</b>
February	64	89	<b>76</b>
March	93	92	<b>140</b>
April	91	68	<b>118</b>
May	88	121	<b>116</b>
June	65	118	<b>115</b>
July	65	89	<b>85</b>
August	59	74	<b>72</b>
September	67	66	<b>99</b>
October	65	67	<b>87</b>
November	52	72	<b>77</b>
December	44	54	

### Contracts Written by Price Range

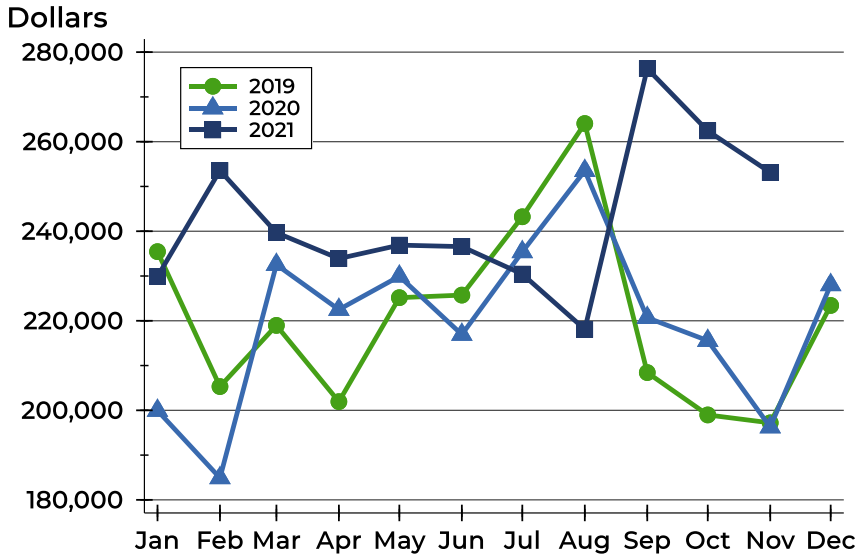
Price Range	Contracts Written		List Price		Days on Market		Price as % of Orig.	
	Number	Percent	Average	Median	Avg.	Med.	Avg.	Med.
Below \$25,000	0	0.0%	N/A	N/A	N/A	N/A	N/A	N/A
\$25,000-\$49,999	0	0.0%	N/A	N/A	N/A	N/A	N/A	N/A
\$50,000-\$99,999	2	2.6%	67,250	67,250	57	57	96.4%	96.4%
\$100,000-\$124,999	3	3.9%	116,633	115,000	58	57	94.0%	92.2%
\$125,000-\$149,999	10	13.0%	137,410	137,500	43	20	95.6%	99.3%
\$150,000-\$174,999	13	16.9%	161,431	160,000	40	36	97.9%	100.0%
\$175,000-\$199,999	9	11.7%	186,111	185,000	39	24	97.2%	100.0%
\$200,000-\$249,999	14	18.2%	224,414	223,500	27	8	96.9%	100.0%
\$250,000-\$299,999	9	11.7%	283,878	285,000	38	4	99.4%	100.0%
\$300,000-\$399,999	9	11.7%	328,322	327,900	46	32	98.2%	100.0%
\$400,000-\$499,999	3	3.9%	427,827	408,480	56	75	99.3%	100.0%
\$500,000-\$749,999	2	2.6%	612,500	612,500	60	60	100.0%	100.0%
\$750,000-\$999,999	2	2.6%	800,000	800,000	17	17	100.0%	100.0%
\$1,000,000 and up	1	1.3%	1,100,000	1,100,000	144	144	100.0%	100.0%





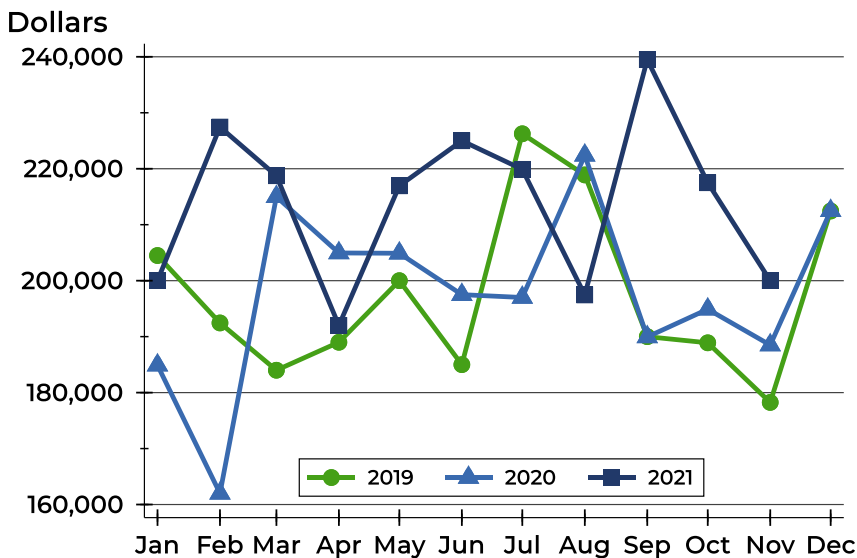
## Riley County Contracts Written Analysis

### Average Price



Month	2019	2020	2021
<b>January</b>	235,443	199,955	<b>229,883</b>
<b>February</b>	205,311	184,907	<b>253,566</b>
<b>March</b>	218,969	232,539	<b>239,683</b>
<b>April</b>	201,938	222,503	<b>233,899</b>
<b>May</b>	225,163	229,933	<b>236,900</b>
<b>June</b>	225,740	216,930	<b>236,566</b>
<b>July</b>	243,232	235,391	<b>230,434</b>
<b>August</b>	264,059	253,520	<b>218,103</b>
<b>September</b>	208,434	220,682	<b>276,326</b>
<b>October</b>	198,975	215,569	<b>262,418</b>
<b>November</b>	197,207	196,256	<b>253,145</b>
<b>December</b>	223,432	228,017	

### Median Price

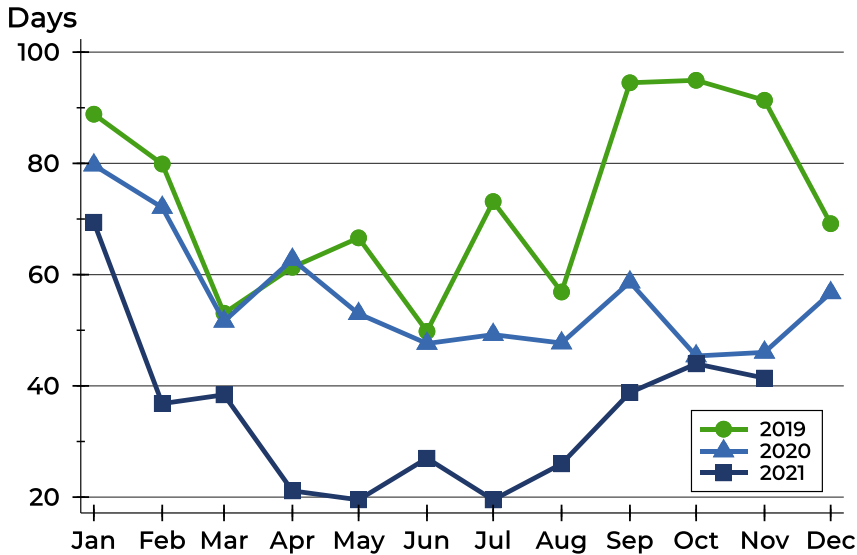


Month	2019	2020	2021
<b>January</b>	204,500	184,900	<b>200,000</b>
<b>February</b>	192,450	162,000	<b>227,450</b>
<b>March</b>	184,000	215,000	<b>218,750</b>
<b>April</b>	189,000	204,950	<b>192,000</b>
<b>May</b>	200,000	204,900	<b>216,950</b>
<b>June</b>	185,000	197,500	<b>225,000</b>
<b>July</b>	226,250	197,000	<b>219,900</b>
<b>August</b>	218,900	222,400	<b>197,450</b>
<b>September</b>	190,000	189,950	<b>239,500</b>
<b>October</b>	188,900	194,900	<b>217,500</b>
<b>November</b>	178,250	188,500	<b>200,000</b>
<b>December</b>	212,450	212,500	



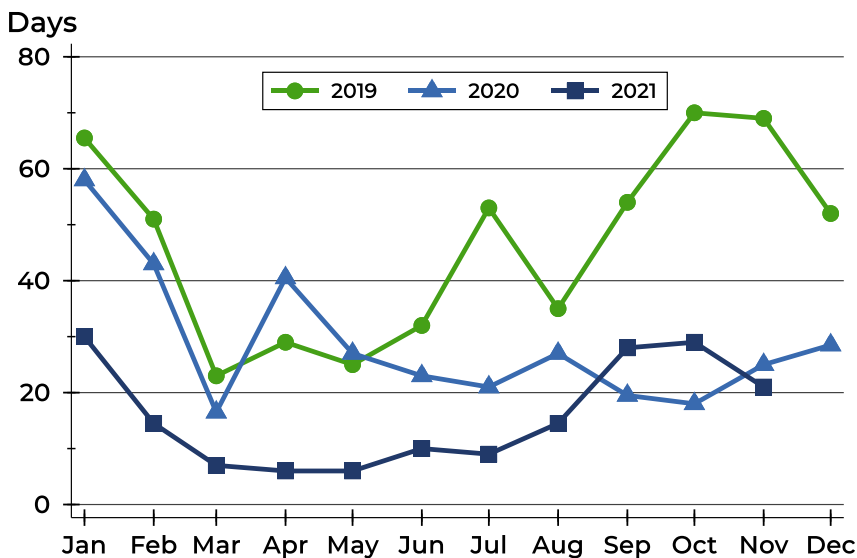
## Riley County Contracts Written Analysis

### Average DOM



Month	2019	2020	2021
January	89	80	<b>69</b>
February	80	72	<b>37</b>
March	53	52	<b>38</b>
April	61	63	<b>21</b>
May	67	53	<b>20</b>
June	50	48	<b>27</b>
July	73	49	<b>20</b>
August	57	48	<b>26</b>
September	94	59	<b>39</b>
October	95	45	<b>44</b>
November	91	46	<b>41</b>
December	69	57	

### Median DOM



Month	2019	2020	2021
January	66	58	<b>30</b>
February	51	43	<b>15</b>
March	23	17	<b>7</b>
April	29	41	<b>6</b>
May	25	27	<b>6</b>
June	32	23	<b>10</b>
July	53	21	<b>9</b>
August	35	27	<b>15</b>
September	54	20	<b>28</b>
October	70	18	<b>29</b>
November	69	25	<b>21</b>
December	52	29	



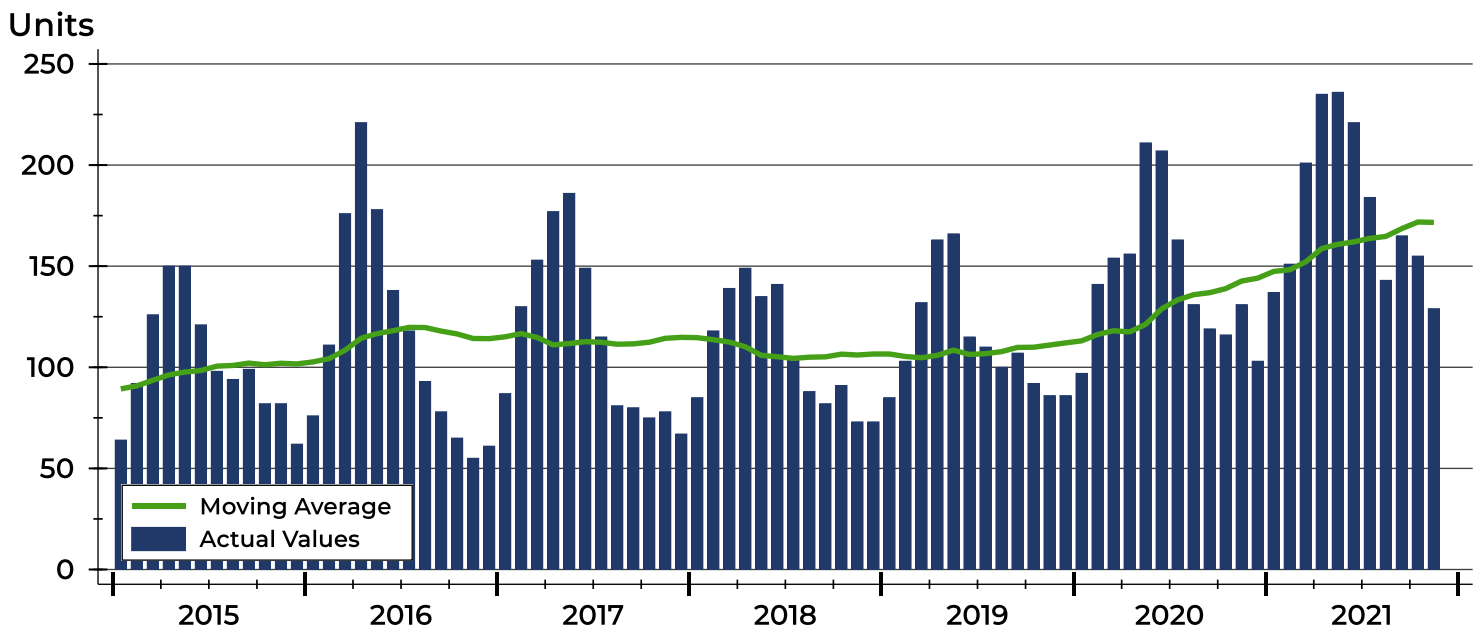
## Riley County Pending Contracts Analysis

Summary Statistics for Pending Contracts		End of November		
		2021	2020	Change
Pending Contracts		<b>129</b>	131	-1.5%
Volume (1,000s)		<b>34,105</b>	27,860	22.4%
Average	List Price	<b>264,377</b>	212,669	24.3%
	Days on Market	<b>40</b>	53	-24.5%
	Percent of Original	<b>97.9%</b>	97.6%	0.3%
Median	List Price	<b>217,500</b>	199,000	9.3%
	Days on Market	<b>19</b>	24	-20.8%
	Percent of Original	<b>100.0%</b>	100.0%	0.0%

A total of 129 listings in Riley County had contracts pending at the end of November, down from 131 contracts pending at the end of November 2020.

Pending contracts reflect listings with a contract in place at the end of the month. In contrast, contracts written measures the number of listings put under contract during the month.

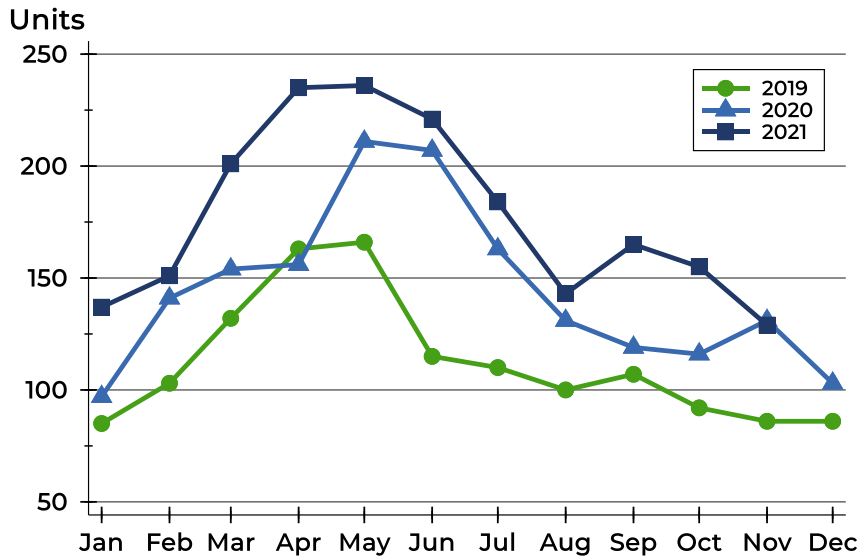
## History of Pending Contracts





## Riley County Pending Contracts Analysis

### Pending Contracts by Month



Month	2019	2020	2021
January	85	97	<b>137</b>
February	103	141	<b>151</b>
March	132	154	<b>201</b>
April	163	156	<b>235</b>
May	166	211	<b>236</b>
June	115	207	<b>221</b>
July	110	163	<b>184</b>
August	100	131	<b>143</b>
September	107	119	<b>165</b>
October	92	116	<b>155</b>
November	86	131	<b>129</b>
December	86	103	

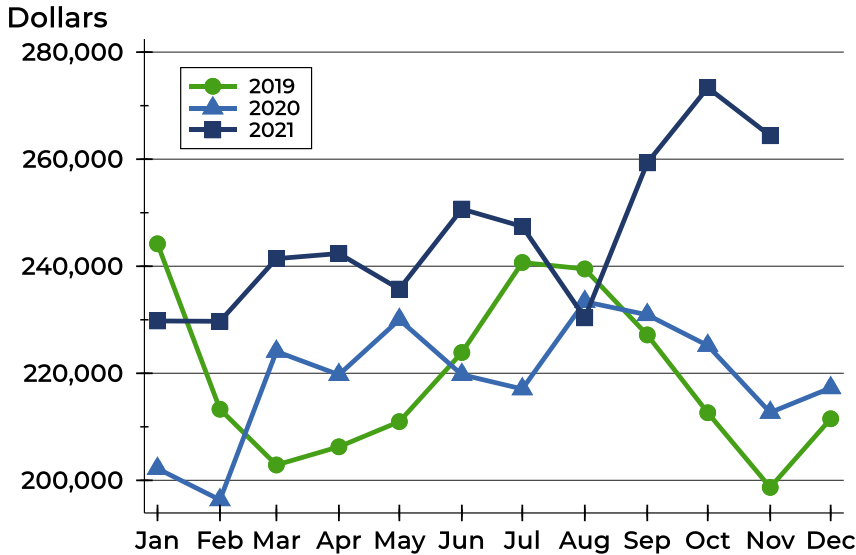
### Pending Contracts by Price Range

Price Range	Pending Contracts		List Price		Days on Market		Price as % of Orig.	
	Number	Percent	Average	Median	Avg.	Med.	Avg.	Med.
Below \$25,000	0	0.0%	N/A	N/A	N/A	N/A	N/A	N/A
\$25,000-\$49,999	0	0.0%	N/A	N/A	N/A	N/A	N/A	N/A
\$50,000-\$99,999	2	1.6%	84,250	84,250	54	54	95.6%	95.6%
\$100,000-\$124,999	4	3.1%	111,700	110,950	34	12	97.5%	100.0%
\$125,000-\$149,999	13	10.1%	137,546	138,000	39	16	97.3%	100.0%
\$150,000-\$174,999	16	12.4%	163,381	165,000	41	35	98.7%	100.0%
\$175,000-\$199,999	19	14.7%	184,195	185,000	39	13	96.7%	100.0%
\$200,000-\$249,999	28	21.7%	224,793	223,000	38	10	97.8%	100.0%
\$250,000-\$299,999	13	10.1%	275,446	269,900	34	4	98.4%	100.0%
\$300,000-\$399,999	21	16.3%	344,524	349,000	48	29	97.7%	100.0%
\$400,000-\$499,999	5	3.9%	444,718	459,000	47	42	99.6%	100.0%
\$500,000-\$749,999	4	3.1%	644,725	670,000	20	10	100.0%	100.0%
\$750,000-\$999,999	3	2.3%	858,333	850,000	12	13	100.0%	100.0%
\$1,000,000 and up	1	0.8%	1,100,000	1,100,000	144	144	100.0%	100.0%



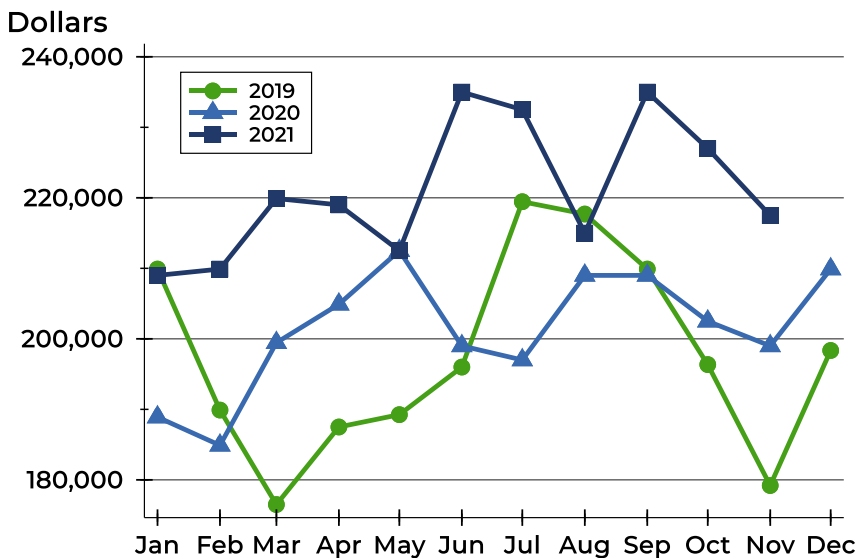
## Riley County Pending Contracts Analysis

### Average Price



Month	2019	2020	2021
<b>January</b>	244,194	202,199	<b>229,781</b>
<b>February</b>	213,292	196,352	<b>229,712</b>
<b>March</b>	202,871	224,078	<b>241,420</b>
<b>April</b>	206,271	219,735	<b>242,377</b>
<b>May</b>	210,969	230,029	<b>235,738</b>
<b>June</b>	223,881	219,742	<b>250,688</b>
<b>July</b>	240,706	217,070	<b>247,424</b>
<b>August</b>	239,497	233,377	<b>230,364</b>
<b>September</b>	227,173	230,927	<b>259,319</b>
<b>October</b>	212,632	225,181	<b>273,363</b>
<b>November</b>	198,680	212,669	<b>264,377</b>
<b>December</b>	211,500	217,276	

### Median Price

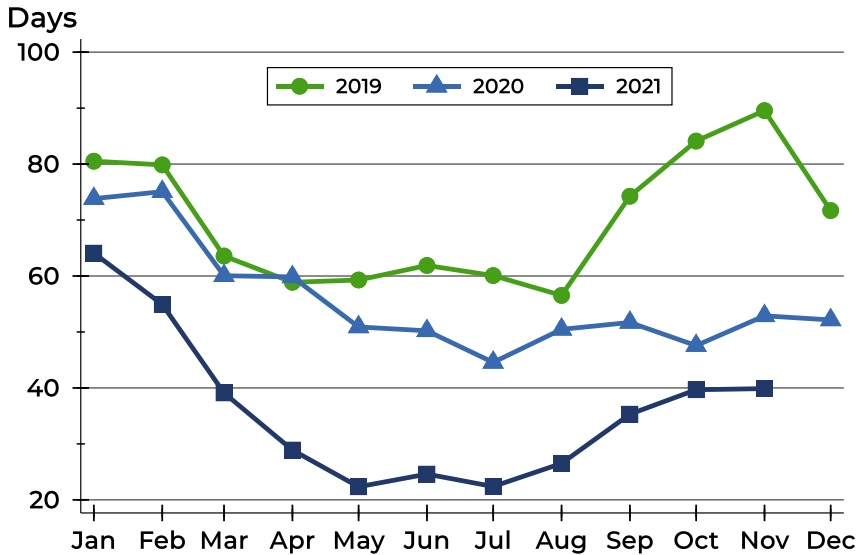


Month	2019	2020	2021
<b>January</b>	209,900	188,900	<b>209,000</b>
<b>February</b>	189,900	184,900	<b>209,900</b>
<b>March</b>	176,500	199,450	<b>219,900</b>
<b>April</b>	187,500	204,900	<b>219,000</b>
<b>May</b>	189,250	212,500	<b>212,500</b>
<b>June</b>	196,000	199,000	<b>235,000</b>
<b>July</b>	219,450	197,000	<b>232,500</b>
<b>August</b>	217,700	209,000	<b>215,000</b>
<b>September</b>	209,900	209,000	<b>235,000</b>
<b>October</b>	196,350	202,498	<b>227,000</b>
<b>November</b>	179,200	199,000	<b>217,500</b>
<b>December</b>	198,350	209,900	



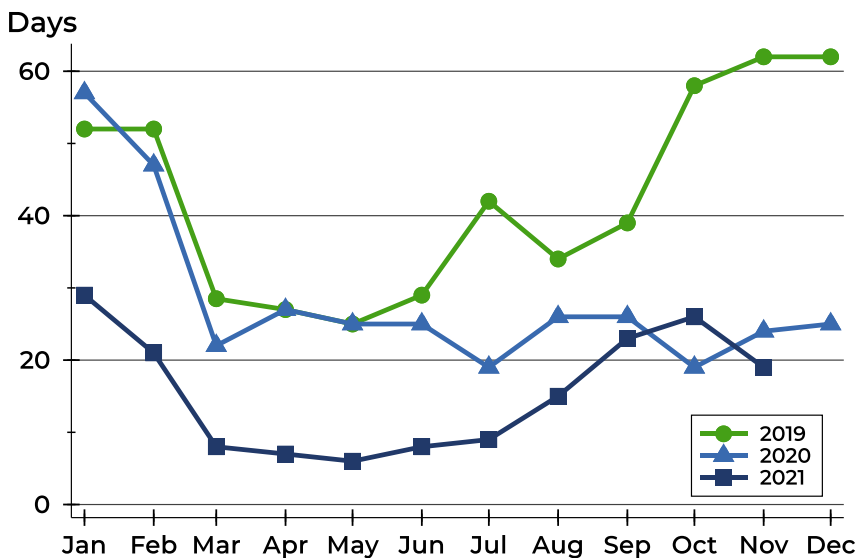
## Riley County Pending Contracts Analysis

### Average DOM



Month	2019	2020	2021
January	81	74	<b>64</b>
February	80	75	<b>55</b>
March	64	60	<b>39</b>
April	59	60	<b>29</b>
May	59	51	<b>22</b>
June	62	50	<b>25</b>
July	60	45	<b>22</b>
August	57	50	<b>27</b>
September	74	52	<b>35</b>
October	84	48	<b>40</b>
November	90	53	<b>40</b>
December	72	52	

### Median DOM



Month	2019	2020	2021
January	52	57	<b>29</b>
February	52	47	<b>21</b>
March	29	22	<b>8</b>
April	27	27	<b>7</b>
May	25	25	<b>6</b>
June	29	25	<b>8</b>
July	42	19	<b>9</b>
August	34	26	<b>15</b>
September	39	26	<b>23</b>
October	58	19	<b>26</b>
November	62	24	<b>19</b>
December	62	25	