



Riley County Housing Report



Market Overview

Riley County Home Sales Rose in December

Total home sales in Riley County rose by 8.6% last month to 88 units, compared to 81 units in December 2020. Total sales volume was \$22.9 million, up 34.5% from a year earlier.

The median sale price in December was \$217,500, up from \$190,000 a year earlier. Homes that sold in December were typically on the market for 14 days and sold for 100.0% of their list prices.

Riley County Active Listings Down at End of December

The total number of active listings in Riley County at the end of December was 112 units, down from 173 at the same point in 2020. This represents a 1.2 months' supply of homes available for sale. The median list price of homes on the market at the end of December was \$199,950.

During December, a total of 70 contracts were written up from 54 in December 2020. At the end of the month, there were 115 contracts still pending.

Report Contents

- Summary Statistics – Page 2
- Closed Listing Analysis – Page 3
- Active Listings Analysis – Page 7
- Months' Supply Analysis – Page 11
- New Listings Analysis – Page 12
- Contracts Written Analysis – Page 15
- Pending Contracts Analysis – Page 19

Contact Information

Margaret Pendleton, Association Executive
 Flint Hills Association of REALTORS®
 205 S. Seth Child Road
 Manhattan, KS 66502
 685-776-1212
ae@flinthillsrealtors.net
www.flinthillsrealtors.net



Riley County Summary Statistics

December MLS Statistics Three-year History		Current Month			Year-to-Date		
		2021	2020	2019	2021	2020	2019
Home Sales		88	81	52	1,138	951	787
Change from prior year		8.6%	55.8%	-3.7%	19.7%	20.8%	-0.1%
Active Listings		112	173	276	N/A	N/A	N/A
Change from prior year		-35.3%	-37.3%	-3.2%			
Months' Supply		1.2	2.2	4.2	N/A	N/A	N/A
Change from prior year		-45.5%	-47.6%	-2.3%			
New Listings		52	48	56	1,296	1,182	1,267
Change from prior year		8.3%	-14.3%	40.0%	9.6%	-6.7%	-1.0%
Contracts Written		70	54	44	1,155	967	797
Change from prior year		29.6%	22.7%	-13.7%	19.4%	21.3%	-0.1%
Pending Contracts		115	103	86	N/A	N/A	N/A
Change from prior year		11.7%	19.8%	17.8%			
Sales Volume (1,000s)		22,872	17,001	9,713	270,561	204,918	170,414
Change from prior year		34.5%	75.0%	-10.8%	32.0%	20.2%	2.5%
Average	Sale Price	259,904	209,890	186,779	237,752	215,476	216,537
	Change from prior year	23.8%	12.4%	-7.4%	10.3%	-0.5%	2.6%
	List Price of Actives	263,144	261,905	240,202	N/A	N/A	N/A
	Change from prior year	0.5%	9.0%	2.7%			
	Days on Market	37	53	88	35	57	72
Change from prior year	-30.2%	-39.8%	25.7%	-38.6%	-20.8%	1.4%	
Percent of List	99.4%	97.0%	97.9%	99.2%	97.9%	97.5%	
Change from prior year	2.5%	-0.9%	0.4%	1.3%	0.4%	0.3%	
Percent of Original	97.2%	94.7%	96.1%	98.0%	95.9%	95.0%	
Change from prior year	2.6%	-1.5%	2.1%	2.2%	0.9%	-0.4%	
Median	Sale Price	217,500	190,000	167,000	215,000	194,000	192,000
	Change from prior year	14.5%	13.8%	-4.8%	10.8%	1.0%	1.6%
	List Price of Actives	199,950	194,000	189,700	N/A	N/A	N/A
	Change from prior year	3.1%	2.3%	-2.7%			
	Days on Market	14	24	43	12	27	42
Change from prior year	-41.7%	-44.2%	-20.4%	-55.6%	-35.7%	-2.3%	
Percent of List	100.0%	97.8%	98.8%	100.0%	98.5%	98.2%	
Change from prior year	2.2%	-1.0%	0.0%	1.5%	0.3%	0.1%	
Percent of Original	99.1%	96.8%	97.4%	99.8%	97.5%	96.9%	
Change from prior year	2.4%	-0.6%	0.6%	2.4%	0.6%	0.4%	

Note: Year-to-date statistics cannot be calculated for Active Listings, Months' Supply and Pending Contracts.



Riley County Closed Listings Analysis

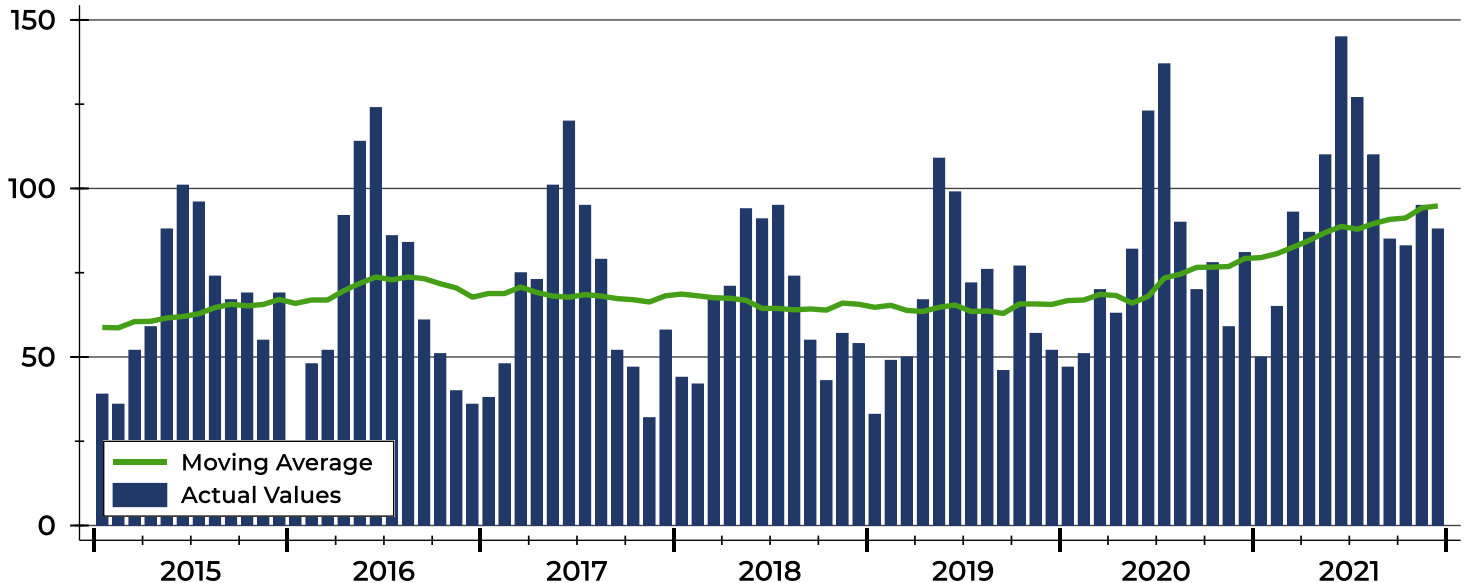
Summary Statistics for Closed Listings		2021	December 2020	Change	2021	Year-to-Date 2020	Change
Closed Listings		88	81	8.6%	1,138	951	19.7%
Volume (1,000s)		22,872	17,001	34.5%	270,561	204,918	32.0%
Months' Supply		1.2	2.2	-45.5%	N/A	N/A	N/A
Average	Sale Price	259,904	209,890	23.8%	237,752	215,476	10.3%
	Days on Market	37	53	-30.2%	35	57	-38.6%
	Percent of List	99.4%	97.0%	2.5%	99.2%	97.9%	1.3%
	Percent of Original	97.2%	94.7%	2.6%	98.0%	95.9%	2.2%
Median	Sale Price	217,500	190,000	14.5%	215,000	194,000	10.8%
	Days on Market	14	24	-41.7%	12	27	-55.6%
	Percent of List	100.0%	97.8%	2.2%	100.0%	98.5%	1.5%
	Percent of Original	99.1%	96.8%	2.4%	99.8%	97.5%	2.4%

A total of 88 homes sold in Riley County in December, up from 81 units in December 2020. Total sales volume rose to \$22.9 million compared to \$17.0 million in the previous year.

The median sales price in December was \$217,500, up 14.5% compared to the prior year. Median days on market was 14 days, down from 32 days in November, and down from 24 in December 2020.

History of Closed Listings

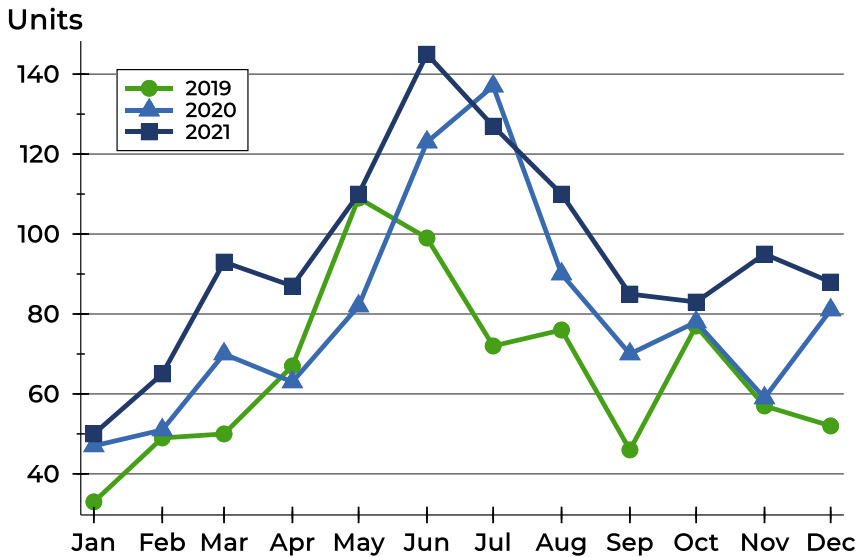
Units





Riley County Closed Listings Analysis

Closed Listings by Month



Month	2019	2020	2021
January	33	47	50
February	49	51	65
March	50	70	93
April	67	63	87
May	109	82	110
June	99	123	145
July	72	137	127
August	76	90	110
September	46	70	85
October	77	78	83
November	57	59	95
December	52	81	88

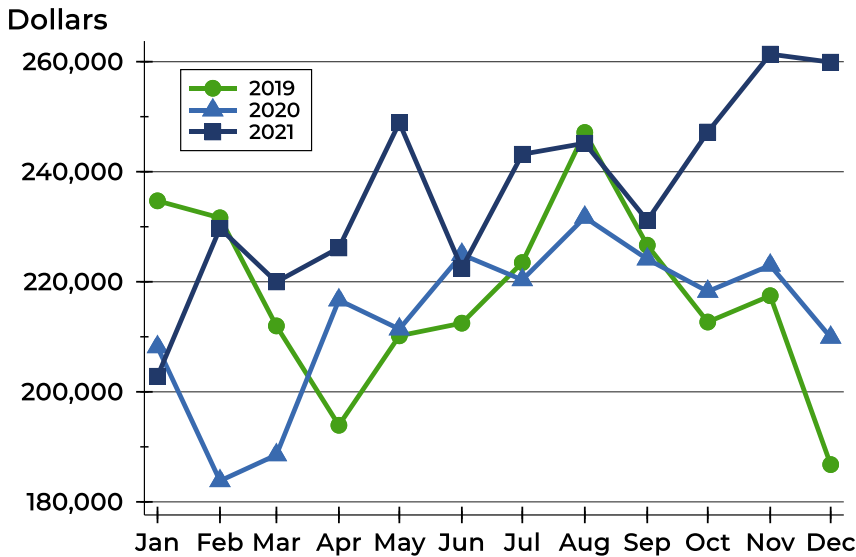
Closed Listings by Price Range

Price Range	Sales		Months' Supply	Sale Price		Days on Market		Price as % of List		Price as % of Orig.	
	Number	Percent		Average	Median	Avg.	Med.	Avg.	Med.	Avg.	Med.
Below \$25,000	1	1.1%	0.0	10,000	10,000	21	21	100.0%	100.0%	100.0%	100.0%
\$25,000-\$49,999	0	0.0%	N/A	N/A	N/A	N/A	N/A	N/A	N/A	N/A	N/A
\$50,000-\$99,999	2	2.3%	1.9	86,550	86,550	54	54	104.3%	104.3%	100.2%	100.2%
\$100,000-\$124,999	3	3.4%	2.6	120,396	120,500	65	80	97.9%	96.5%	91.4%	86.7%
\$125,000-\$149,999	10	11.4%	1.4	135,240	136,000	62	55	98.0%	98.9%	95.4%	97.5%
\$150,000-\$174,999	11	12.5%	1.3	163,948	167,000	42	36	98.4%	99.4%	95.3%	96.2%
\$175,000-\$199,999	11	12.5%	0.6	183,209	180,000	34	8	100.5%	100.0%	98.7%	100.0%
\$200,000-\$249,999	15	17.0%	0.7	220,623	220,000	18	6	101.4%	101.2%	98.3%	100.0%
\$250,000-\$299,999	8	9.1%	0.7	275,925	274,000	19	2	101.6%	101.5%	101.8%	103.5%
\$300,000-\$399,999	16	18.2%	1.2	340,322	327,500	42	31	98.6%	99.1%	96.4%	96.3%
\$400,000-\$499,999	5	5.7%	2.3	450,568	459,000	27	8	103.3%	100.0%	102.8%	100.0%
\$500,000-\$749,999	4	4.5%	2.0	585,350	559,950	29	28	95.5%	98.8%	95.5%	98.8%
\$750,000-\$999,999	2	2.3%	4.8	800,000	800,000	79	79	82.8%	82.8%	82.8%	82.8%
\$1,000,000 and up	0	0.0%	N/A	N/A	N/A	N/A	N/A	N/A	N/A	N/A	N/A



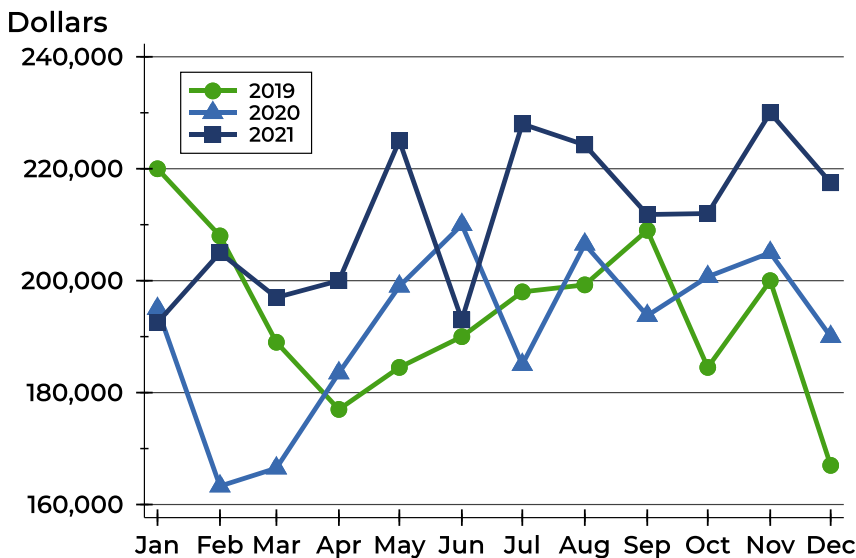
Riley County Closed Listings Analysis

Average Price



Month	2019	2020	2021
January	234,709	208,157	202,830
February	231,624	183,819	229,715
March	211,977	188,530	219,973
April	193,922	216,671	226,152
May	210,177	211,400	248,898
June	212,476	224,955	222,470
July	223,492	220,343	243,175
August	247,130	231,701	245,172
September	226,639	224,114	231,140
October	212,680	218,236	247,212
November	217,467	222,989	261,365
December	186,779	209,890	259,904

Median Price

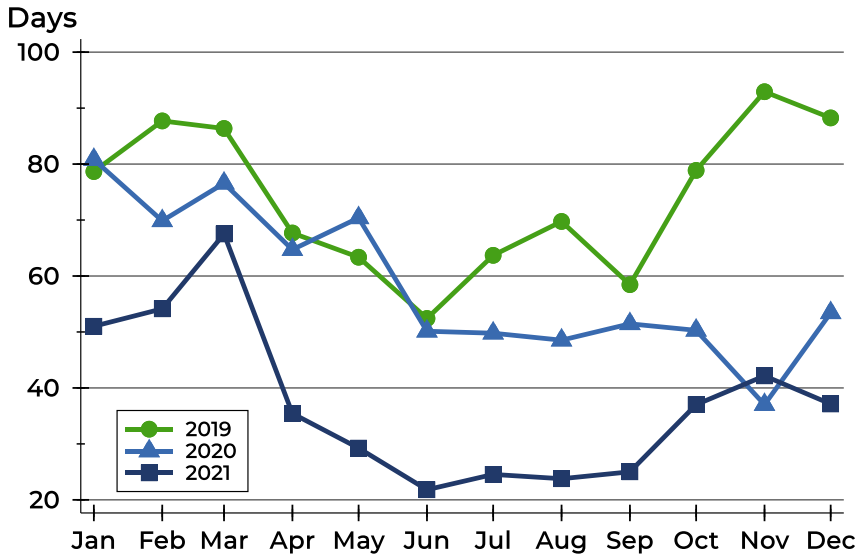


Month	2019	2020	2021
January	220,000	195,000	192,500
February	208,000	163,295	205,000
March	189,000	166,500	197,000
April	177,000	183,500	200,000
May	184,500	199,000	225,000
June	190,000	210,000	193,000
July	198,000	185,000	228,000
August	199,250	206,500	224,250
September	209,000	193,750	211,819
October	184,500	200,700	212,000
November	200,000	205,000	230,000
December	167,000	190,000	217,500



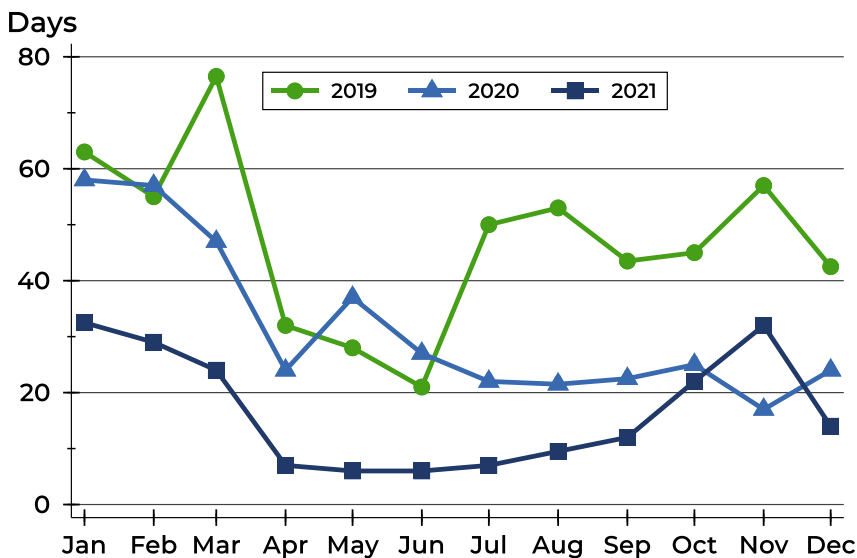
Riley County Closed Listings Analysis

Average DOM



Month	2019	2020	2021
January	79	81	51
February	88	70	54
March	86	77	68
April	68	65	35
May	63	70	29
June	52	50	22
July	64	50	25
August	70	49	24
September	58	51	25
October	79	50	37
November	93	37	42
December	88	53	37

Median DOM



Month	2019	2020	2021
January	63	58	33
February	55	57	29
March	77	47	24
April	32	24	7
May	28	37	6
June	21	27	6
July	50	22	7
August	53	22	10
September	44	23	12
October	45	25	22
November	57	17	32
December	43	24	14



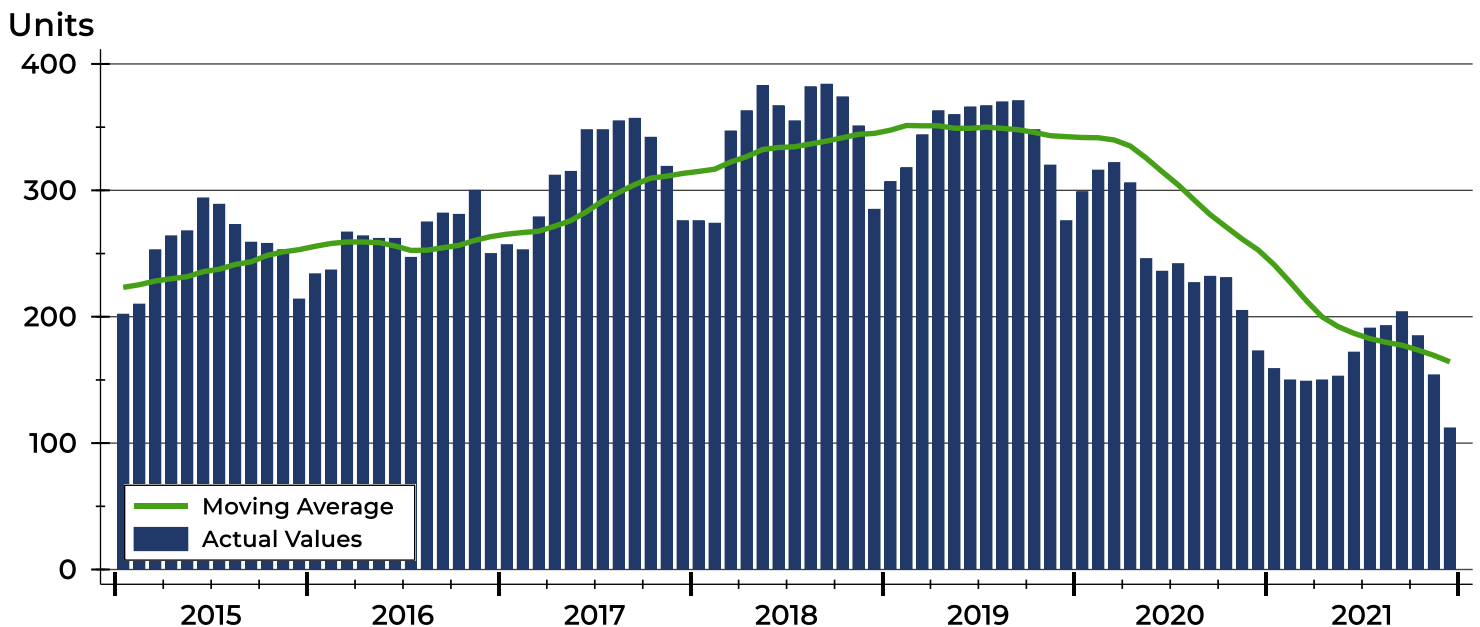
Riley County Active Listings Analysis

Summary Statistics for Active Listings		2021	2020	Change
Active Listings		112	173	-35.3%
Volume (1,000s)		29,472	45,310	-35.0%
Months' Supply		1.2	2.2	-45.5%
Average	List Price	263,144	261,905	0.5%
	Days on Market	93	106	-12.3%
	Percent of Original	97.7%	97.6%	0.1%
Median	List Price	199,950	194,000	3.1%
	Days on Market	62	76	-18.4%
	Percent of Original	100.0%	100.0%	0.0%

A total of 112 homes were available for sale in Riley County at the end of December. This represents a 1.2 months' supply of active listings.

The median list price of homes on the market at the end of December was \$199,950, up 3.1% from 2020. The typical time on market for active listings was 62 days, down from 76 days a year earlier.

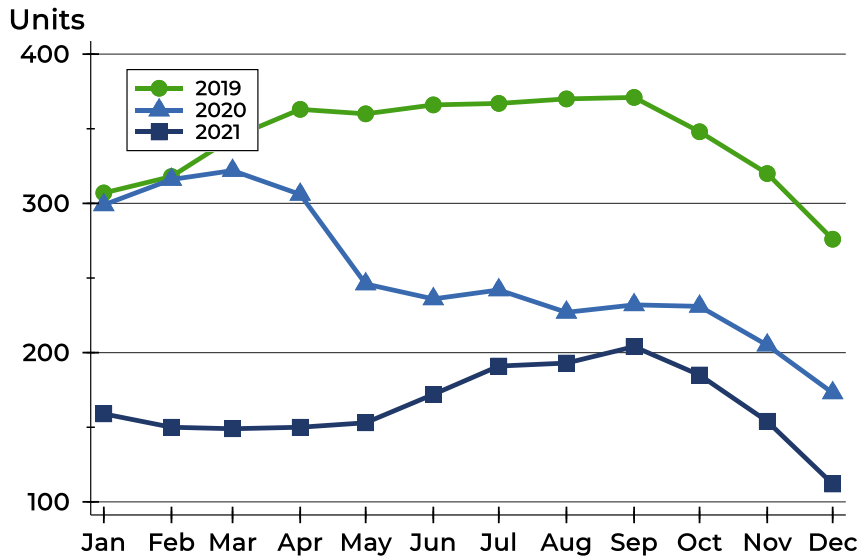
History of Active Listings





Riley County Active Listings Analysis

Active Listings by Month



Month	2019	2020	2021
January	307	299	159
February	318	316	150
March	344	322	149
April	363	306	150
May	360	246	153
June	366	236	172
July	367	242	191
August	370	227	193
September	371	232	204
October	348	231	185
November	320	205	154
December	276	173	112

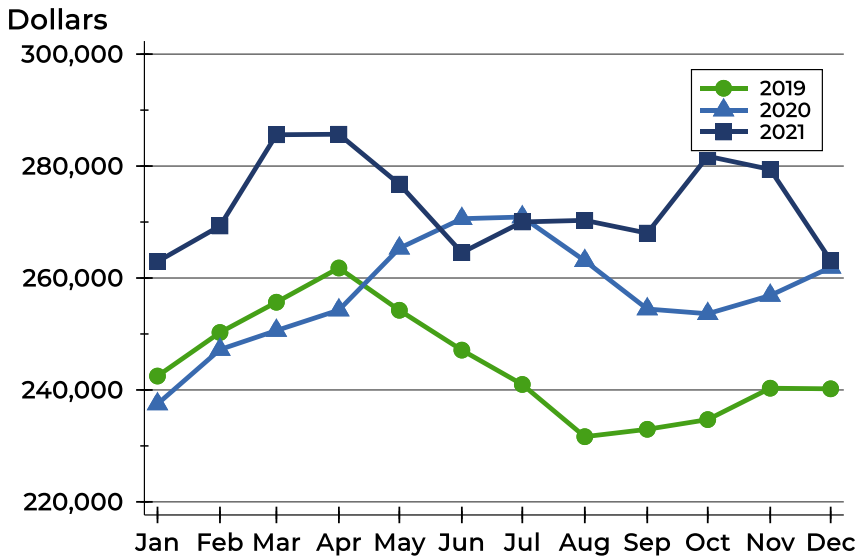
Active Listings by Price Range

Price Range	Active Listings Number	Active Listings Percent	Months' Supply	List Price Average	List Price Median	Days on Market Avg.	Days on Market Med.	Price as % of Orig. Avg.	Price as % of Orig. Med.
Below \$25,000	0	0.0%	0.0	N/A	N/A	N/A	N/A	N/A	N/A
\$25,000-\$49,999	0	0.0%	N/A	N/A	N/A	N/A	N/A	N/A	N/A
\$50,000-\$99,999	7	6.3%	1.9	86,829	88,500	78	68	98.1%	100.0%
\$100,000-\$124,999	14	12.5%	2.6	112,879	111,250	48	28	95.7%	100.0%
\$125,000-\$149,999	12	10.7%	1.4	140,150	140,000	85	74	96.7%	99.7%
\$150,000-\$174,999	16	14.3%	1.3	162,169	164,500	71	86	98.7%	100.0%
\$175,000-\$199,999	7	6.3%	0.6	191,700	189,000	120	99	96.9%	97.4%
\$200,000-\$249,999	12	10.7%	0.7	230,833	238,000	75	54	98.4%	100.0%
\$250,000-\$299,999	9	8.0%	0.7	276,156	279,900	49	32	97.4%	100.0%
\$300,000-\$399,999	19	17.0%	1.2	353,139	357,900	124	85	98.5%	100.0%
\$400,000-\$499,999	8	7.1%	2.3	452,384	449,000	112	95	99.0%	100.0%
\$500,000-\$749,999	5	4.5%	2.0	592,700	565,000	48	11	100.9%	100.0%
\$750,000-\$999,999	2	1.8%	4.8	959,000	959,000	517	517	88.4%	88.4%
\$1,000,000 and up	1	0.9%	N/A	1,200,000	1,200,000	295	295	100.0%	100.0%



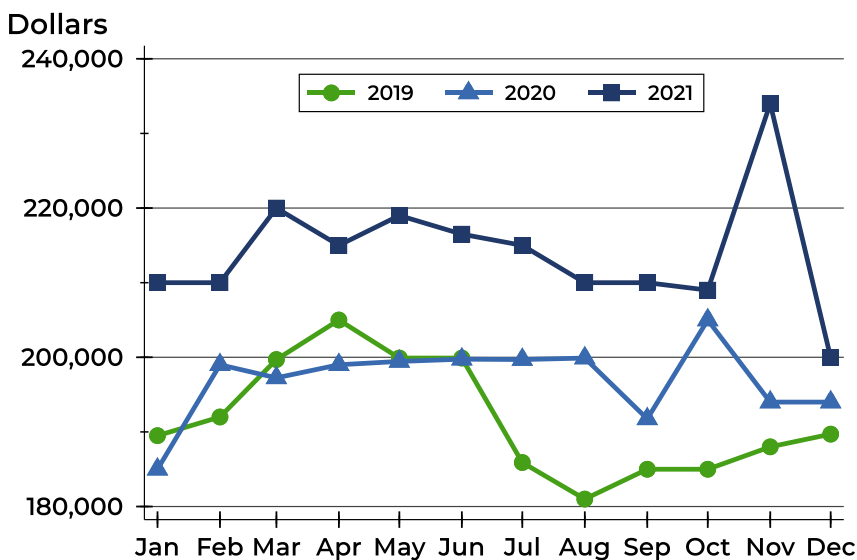
Riley County Active Listings Analysis

Average Price



Month	2019	2020	2021
January	242,482	237,490	262,929
February	250,264	247,217	269,299
March	255,674	250,613	285,597
April	261,789	254,270	285,687
May	254,240	265,322	276,770
June	247,115	270,600	264,539
July	240,981	270,904	270,021
August	231,649	263,083	270,304
September	232,972	254,462	268,017
October	234,698	253,619	281,756
November	240,309	256,881	279,402
December	240,202	261,905	263,144

Median Price

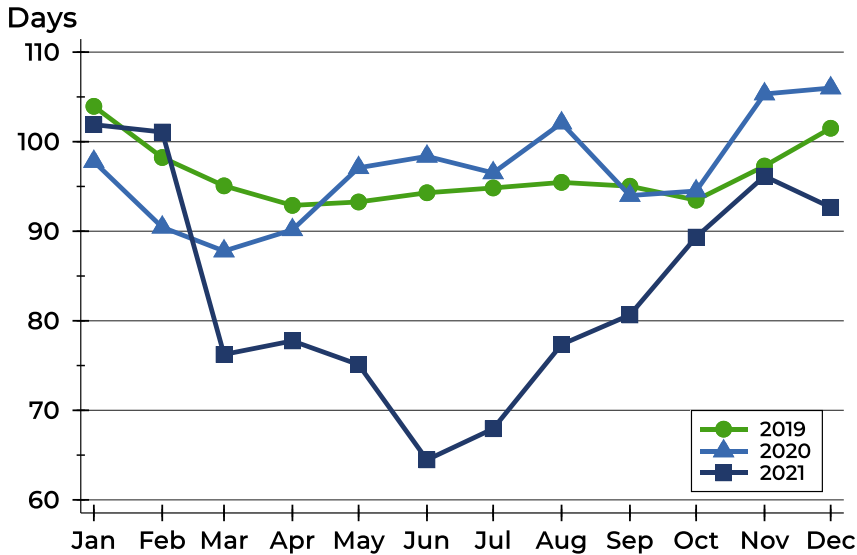


Month	2019	2020	2021
January	189,500	185,000	210,000
February	192,000	199,000	210,000
March	199,700	197,245	220,000
April	205,000	199,000	215,000
May	199,900	199,450	219,000
June	199,900	199,748	216,500
July	185,900	199,700	215,000
August	181,000	199,900	210,000
September	185,000	191,750	210,000
October	185,000	205,000	209,000
November	188,000	194,000	234,000
December	189,700	194,000	199,950



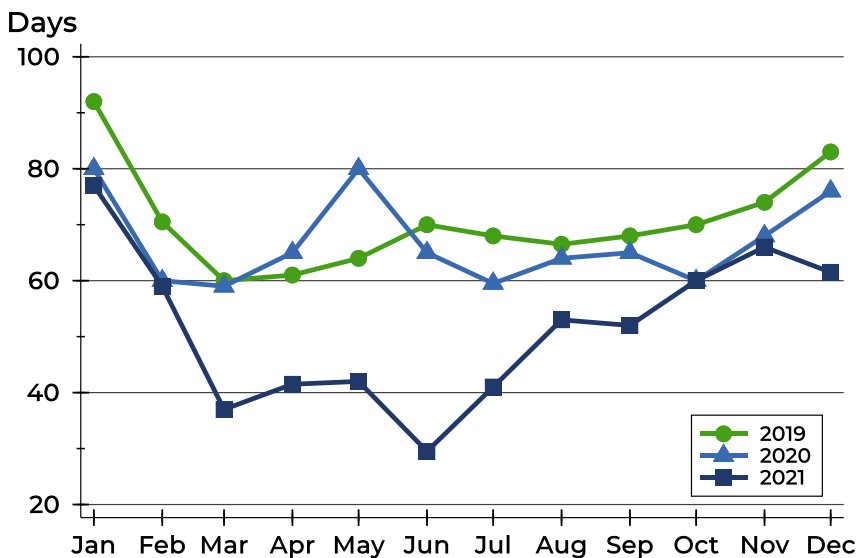
Riley County Active Listings Analysis

Average DOM



Month	2019	2020	2021
January	104	98	102
February	98	90	101
March	95	88	76
April	93	90	78
May	93	97	75
June	94	98	64
July	95	97	68
August	95	102	77
September	95	94	81
October	93	94	89
November	97	105	96
December	102	106	93

Median DOM

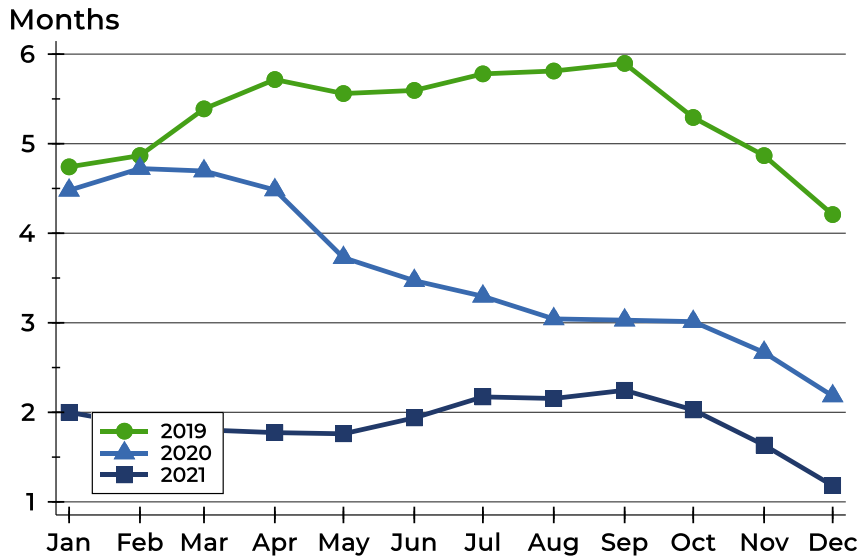


Month	2019	2020	2021
January	92	80	77
February	71	60	59
March	60	59	37
April	61	65	42
May	64	80	42
June	70	65	30
July	68	60	41
August	67	64	53
September	68	65	52
October	70	60	60
November	74	68	66
December	83	76	62



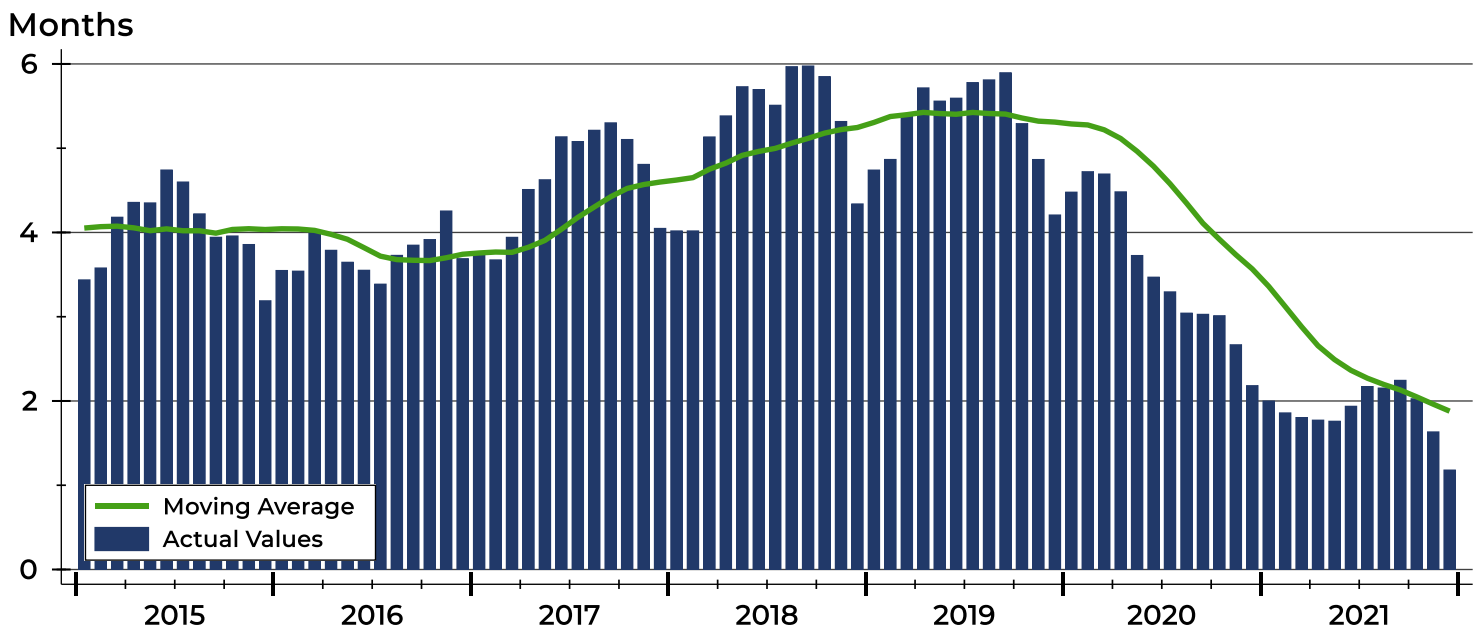
Riley County Months' Supply Analysis

Months' Supply by Month



Month	2019	2020	2021
January	4.7	4.5	2.0
February	4.9	4.7	1.9
March	5.4	4.7	1.8
April	5.7	4.5	1.8
May	5.6	3.7	1.8
June	5.6	3.5	1.9
July	5.8	3.3	2.2
August	5.8	3.0	2.2
September	5.9	3.0	2.2
October	5.3	3.0	2.0
November	4.9	2.7	1.6
December	4.2	2.2	1.2

History of Month's Supply





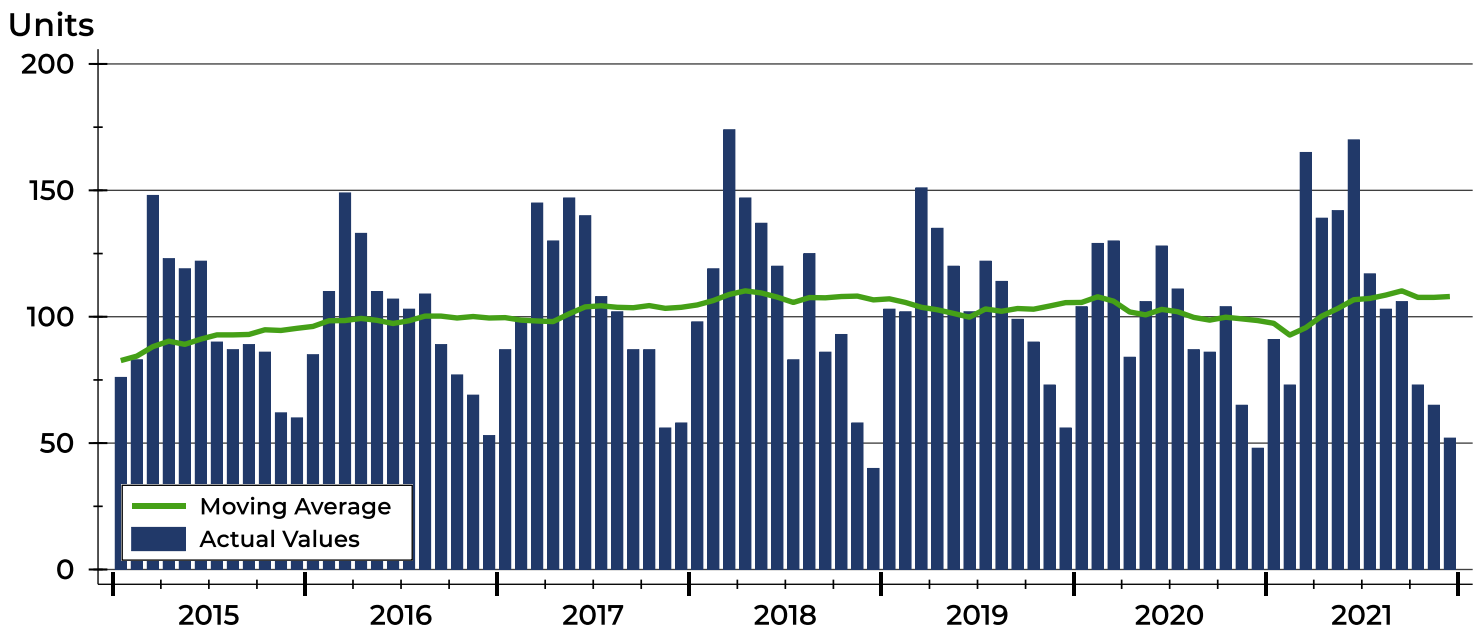
Riley County New Listings Analysis

Summary Statistics for New Listings		2021	December 2020	Change
Current Month	New Listings	52	48	8.3%
	Volume (1,000s)	11,271	10,382	8.6%
	Average List Price	216,748	216,300	0.2%
	Median List Price	180,000	196,500	-8.4%
Year-to-Date	New Listings	1,296	1,182	9.6%
	Volume (1,000s)	314,794	266,688	18.0%
	Average List Price	242,896	225,625	7.7%
	Median List Price	215,000	195,000	10.3%

A total of 52 new listings were added in Riley County during December, up 8.3% from the same month in 2020. Year-to-date Riley County has seen 1,296 new listings.

The median list price of these homes was \$180,000 down from \$196,500 in 2020.

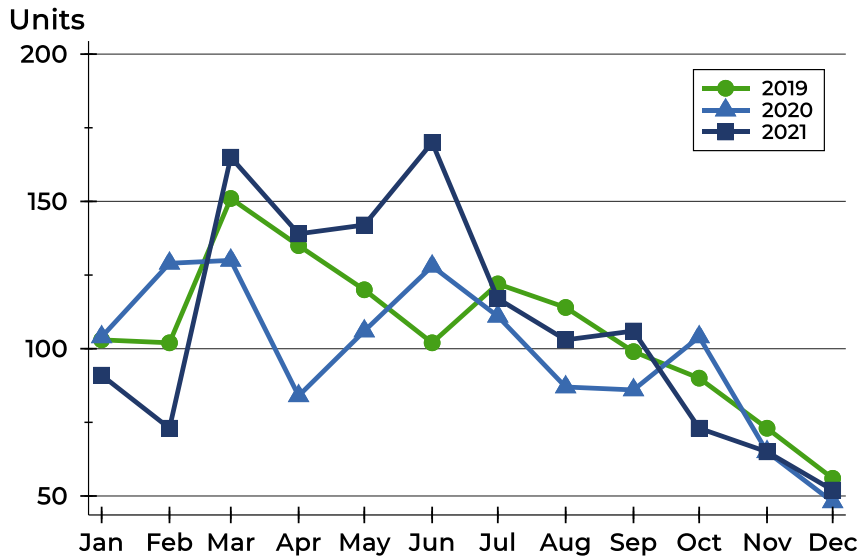
History of New Listings





Riley County New Listings Analysis

New Listings by Month



Month	2019	2020	2021
January	103	104	91
February	102	129	73
March	151	130	165
April	135	84	139
May	120	106	142
June	102	128	170
July	122	111	117
August	114	87	103
September	99	86	106
October	90	104	73
November	73	65	65
December	56	48	52

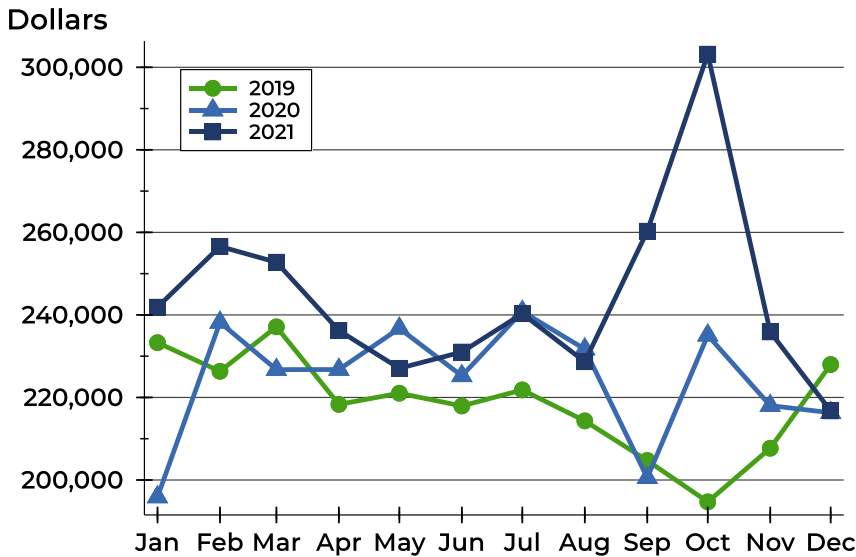
New Listings by Price Range

Price Range	New Listings		List Price		Days on Market		Price as % of Orig.	
	Number	Percent	Average	Median	Avg.	Med.	Avg.	Med.
Below \$25,000	0	0.0%	N/A	N/A	N/A	N/A	N/A	N/A
\$25,000-\$49,999	1	1.9%	28,000	28,000	2	2	100.0%	100.0%
\$50,000-\$99,999	4	7.7%	73,225	76,450	20	21	99.2%	100.0%
\$100,000-\$124,999	5	9.6%	110,600	109,500	27	26	99.5%	100.0%
\$125,000-\$149,999	8	15.4%	134,175	131,500	12	9	100.0%	100.0%
\$150,000-\$174,999	7	13.5%	162,714	159,000	14	7	98.4%	100.0%
\$175,000-\$199,999	3	5.8%	182,500	180,000	3	3	100.0%	100.0%
\$200,000-\$249,999	10	19.2%	228,137	232,000	8	4	100.0%	100.0%
\$250,000-\$299,999	3	5.8%	263,300	265,000	14	12	100.0%	100.0%
\$300,000-\$399,999	7	13.5%	345,400	339,000	13	13	99.4%	100.0%
\$400,000-\$499,999	2	3.8%	487,000	487,000	19	19	99.8%	99.8%
\$500,000-\$749,999	2	3.8%	587,000	587,000	10	10	100.0%	100.0%
\$750,000-\$999,999	0	0.0%	N/A	N/A	N/A	N/A	N/A	N/A
\$1,000,000 and up	0	0.0%	N/A	N/A	N/A	N/A	N/A	N/A



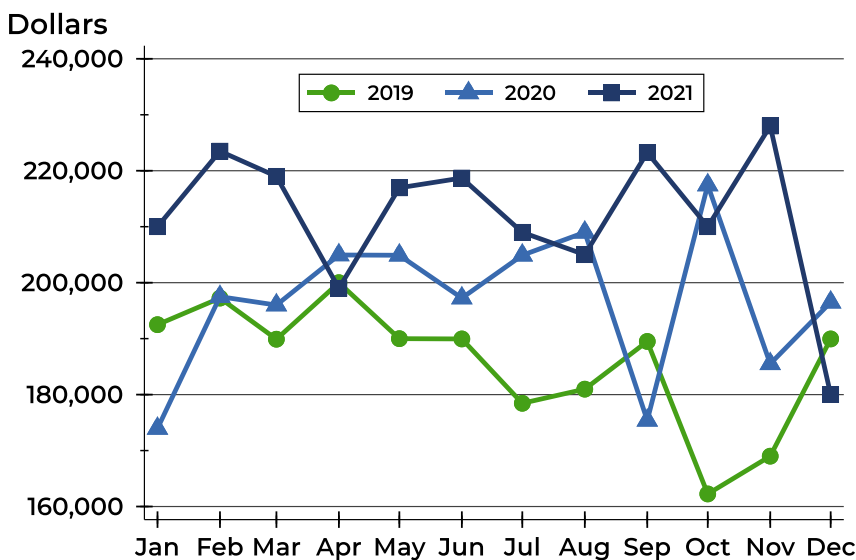
Riley County New Listings Analysis

Average Price



Month	2019	2020	2021
January	233,282	195,887	241,888
February	226,334	238,191	256,586
March	237,119	226,747	252,772
April	218,324	226,764	236,225
May	221,035	236,745	227,067
June	217,944	225,242	231,010
July	221,832	240,816	240,298
August	214,332	231,720	228,658
September	204,728	200,543	260,291
October	194,701	235,066	303,186
November	207,707	218,030	235,880
December	227,983	216,300	216,748

Median Price



Month	2019	2020	2021
January	192,500	173,950	210,000
February	197,250	197,500	223,500
March	189,900	196,000	219,000
April	200,000	204,948	199,000
May	190,000	204,900	216,950
June	189,950	197,250	218,700
July	178,450	204,900	209,000
August	180,975	209,000	205,000
September	189,500	175,400	223,250
October	162,250	217,450	209,999
November	169,000	185,500	228,000
December	189,950	196,500	180,000



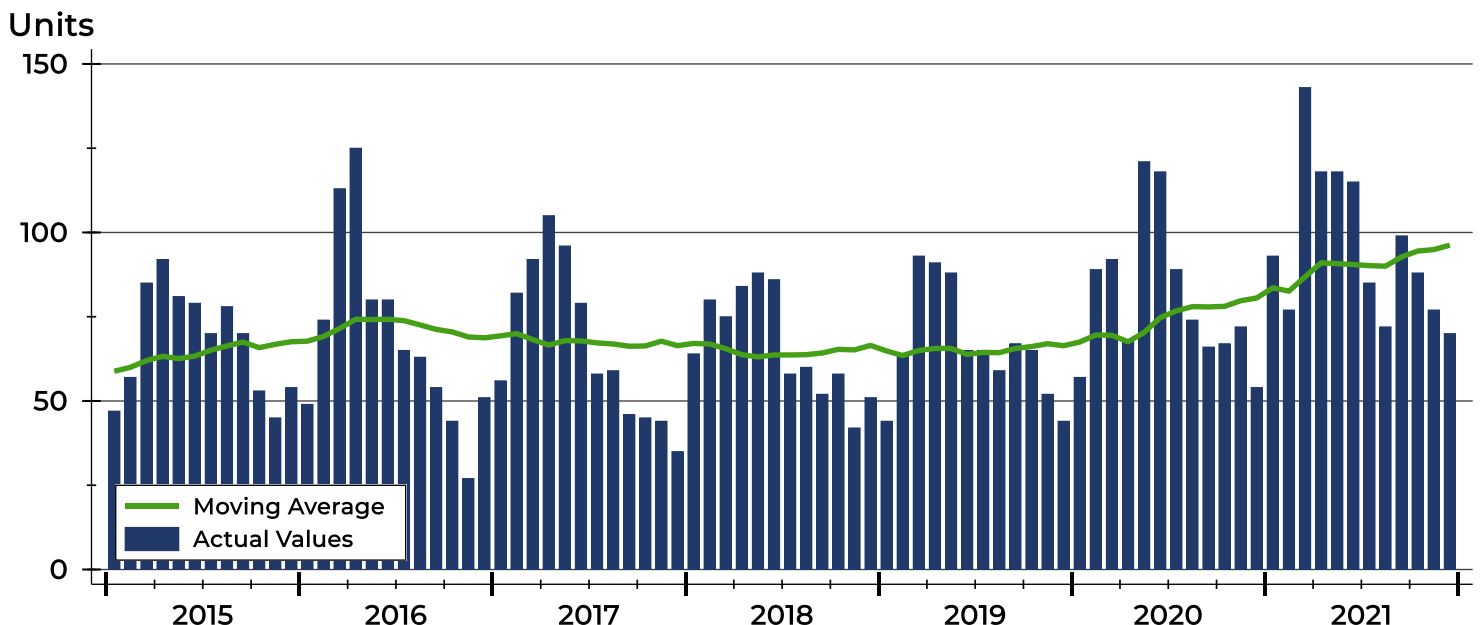
Riley County Contracts Written Analysis

Summary Statistics for Contracts Written		December			Year-to-Date		
		2021	2020	Change	2021	2020	Change
Contracts Written		70	54	29.6%	1,155	967	19.4%
Volume (1,000s)		15,949	12,313	29.5%	279,143	212,959	31.1%
Average	Sale Price	227,842	228,017	-0.1%	241,682	220,227	9.7%
	Days on Market	46	57	-19.3%	35	55	-36.4%
	Percent of Original	97.9%	94.7%	3.4%	98.3%	95.9%	2.5%
Median	Sale Price	210,000	212,500	-1.2%	215,000	197,000	9.1%
	Days on Market	17	29	-41.4%	11	25	-56.0%
	Percent of Original	100.0%	95.5%	4.7%	100.0%	97.5%	2.6%

A total of 70 contracts for sale were written in Riley County during the month of December, up from 54 in 2020. The median list price of these homes was \$210,000, down from \$212,500 the prior year.

Half of the homes that went under contract in December were on the market less than 17 days, compared to 29 days in December 2020.

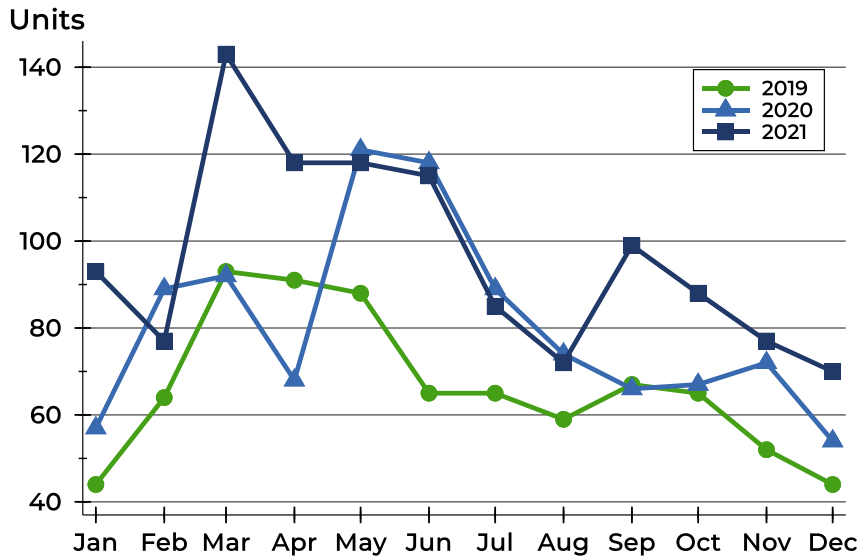
History of Contracts Written





Riley County Contracts Written Analysis

Contracts Written by Month



Month	2019	2020	2021
January	44	57	93
February	64	89	77
March	93	92	143
April	91	68	118
May	88	121	118
June	65	118	115
July	65	89	85
August	59	74	72
September	67	66	99
October	65	67	88
November	52	72	77
December	44	54	70

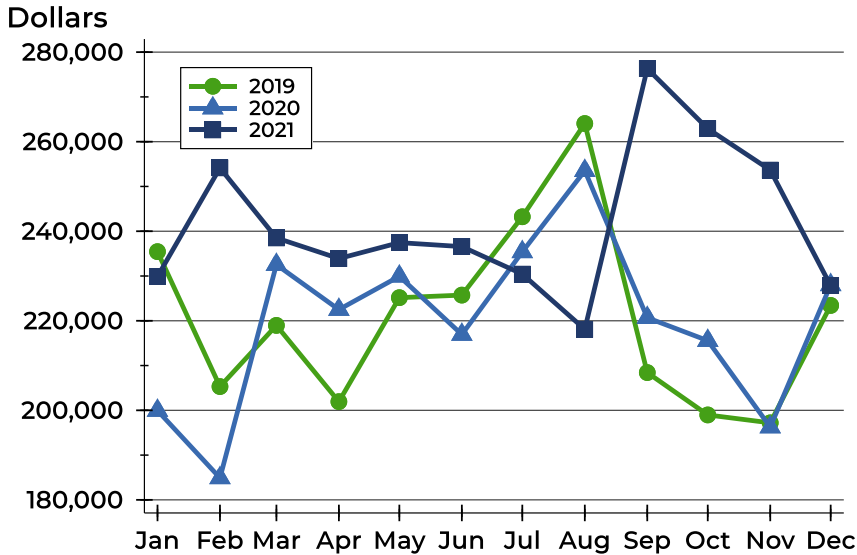
Contracts Written by Price Range

Price Range	Contracts Written		List Price		Days on Market		Price as % of Orig.	
	Number	Percent	Average	Median	Avg.	Med.	Avg.	Med.
Below \$25,000	1	1.4%	10,000	10,000	21	21	100.0%	100.0%
\$25,000-\$49,999	0	0.0%	N/A	N/A	N/A	N/A	N/A	N/A
\$50,000-\$99,999	3	4.3%	65,000	60,000	23	16	98.3%	100.0%
\$100,000-\$124,999	3	4.3%	115,967	119,000	92	51	96.0%	100.0%
\$125,000-\$149,999	10	14.3%	138,420	140,000	109	52	97.1%	100.0%
\$150,000-\$174,999	9	12.9%	159,389	158,000	44	16	95.4%	100.0%
\$175,000-\$199,999	8	11.4%	183,125	180,000	25	9	100.2%	100.0%
\$200,000-\$249,999	12	17.1%	229,364	226,000	18	4	99.8%	100.0%
\$250,000-\$299,999	8	11.4%	269,175	270,000	49	31	97.2%	100.0%
\$300,000-\$399,999	10	14.3%	333,780	329,500	34	19	97.4%	100.0%
\$400,000-\$499,999	4	5.7%	453,475	457,450	36	31	97.2%	97.5%
\$500,000-\$749,999	2	2.9%	527,450	527,450	25	25	100.0%	100.0%
\$750,000-\$999,999	0	0.0%	N/A	N/A	N/A	N/A	N/A	N/A
\$1,000,000 and up	0	0.0%	N/A	N/A	N/A	N/A	N/A	N/A



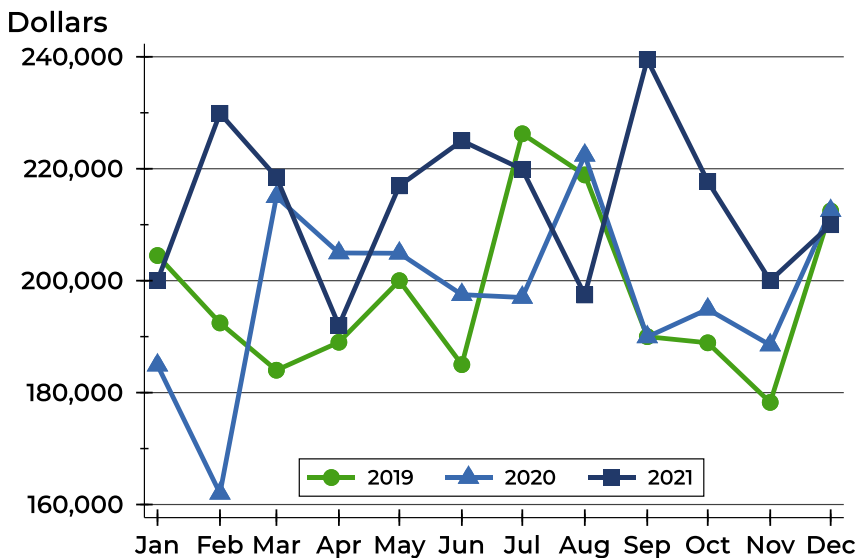
Riley County Contracts Written Analysis

Average Price



Month	2019	2020	2021
January	235,443	199,955	229,883
February	205,311	184,907	254,150
March	218,969	232,539	238,500
April	201,938	222,503	233,899
May	225,163	229,933	237,460
June	225,740	216,930	236,566
July	243,232	235,391	230,434
August	264,059	253,520	218,103
September	208,434	220,682	276,326
October	198,975	215,569	262,907
November	197,207	196,256	253,665
December	223,432	228,017	227,842

Median Price

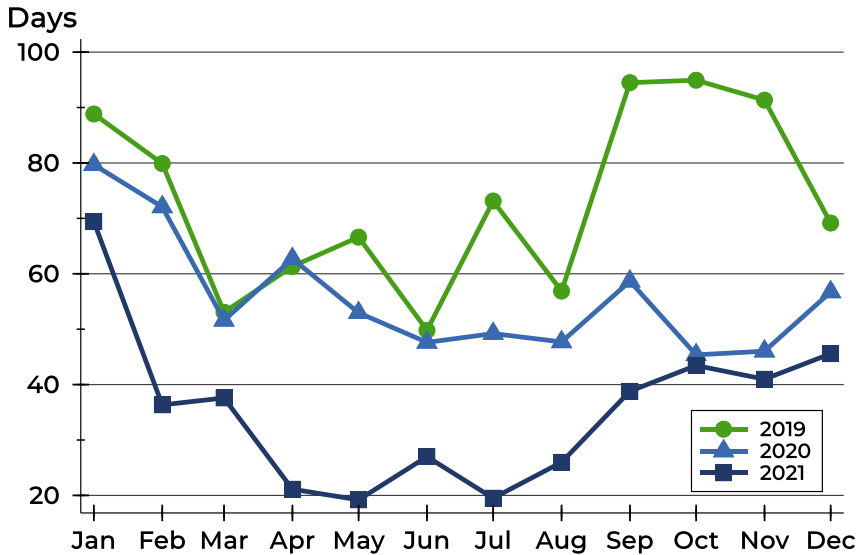


Month	2019	2020	2021
January	204,500	184,900	200,000
February	192,450	162,000	229,900
March	184,000	215,000	218,500
April	189,000	204,950	192,000
May	200,000	204,900	216,950
June	185,000	197,500	225,000
July	226,250	197,000	219,900
August	218,900	222,400	197,450
September	190,000	189,950	239,500
October	188,900	194,900	217,750
November	178,250	188,500	200,000
December	212,450	212,500	210,000



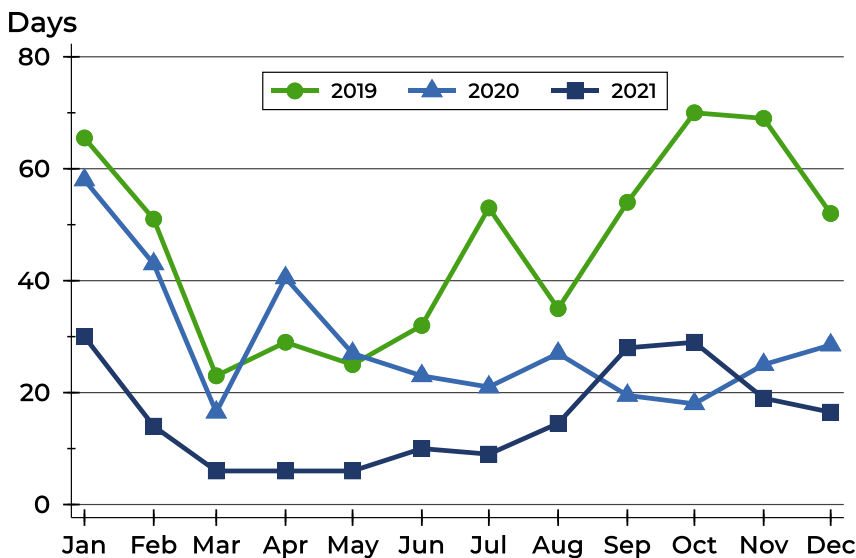
Riley County Contracts Written Analysis

Average DOM



Month	2019	2020	2021
January	89	80	69
February	80	72	36
March	53	52	38
April	61	63	21
May	67	53	19
June	50	48	27
July	73	49	20
August	57	48	26
September	94	59	39
October	95	45	43
November	91	46	41
December	69	57	46

Median DOM



Month	2019	2020	2021
January	66	58	30
February	51	43	14
March	23	17	6
April	29	41	6
May	25	27	6
June	32	23	10
July	53	21	9
August	35	27	15
September	54	20	28
October	70	18	29
November	69	25	19
December	52	29	17



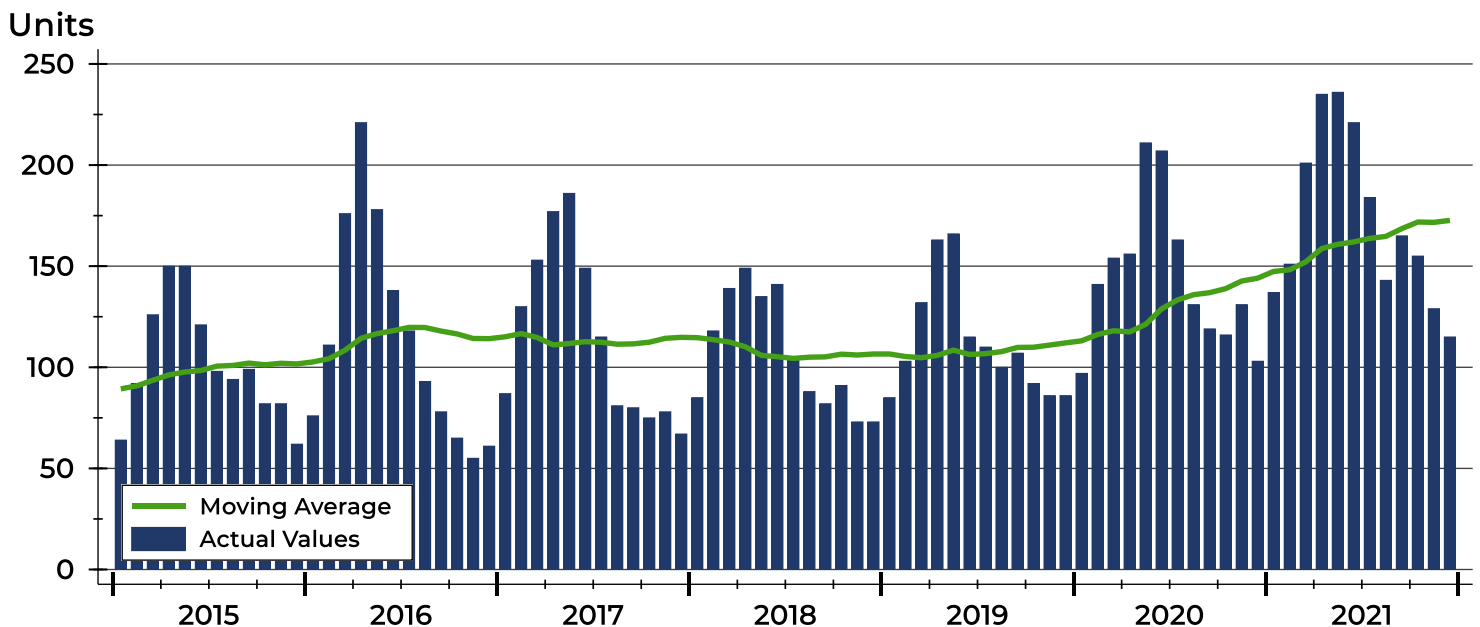
Riley County Pending Contracts Analysis

Summary Statistics for Pending Contracts		End of December		
		2021	2020	Change
Pending Contracts		115	103	11.7%
Volume (1,000s)		28,339	22,379	26.6%
Average	List Price	246,425	217,276	13.4%
	Days on Market	44	52	-15.4%
	Percent of Original	98.3%	97.9%	0.4%
Median	List Price	209,900	209,900	0.0%
	Days on Market	17	25	-32.0%
	Percent of Original	100.0%	100.0%	0.0%

A total of 115 listings in Riley County had contracts pending at the end of December, up from 103 contracts pending at the end of December 2020.

Pending contracts reflect listings with a contract in place at the end of the month. In contrast, contracts written measures the number of listings put under contract during the month.

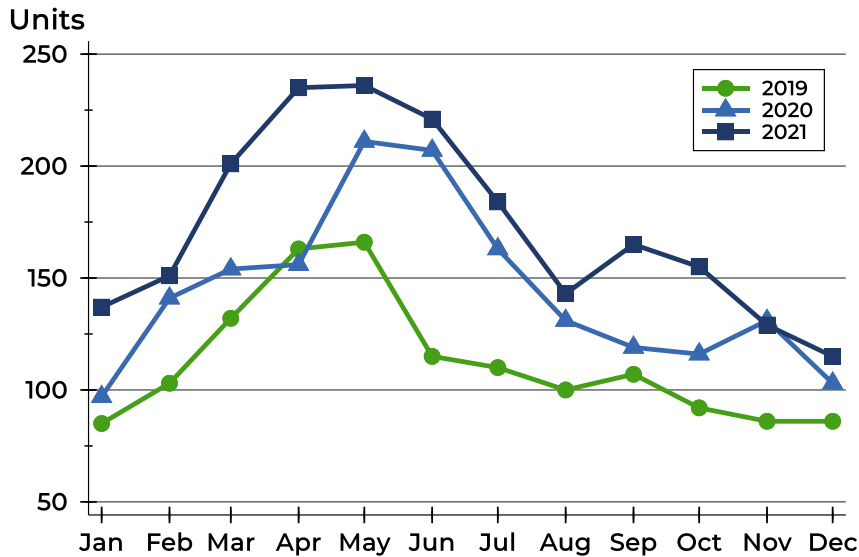
History of Pending Contracts





Riley County Pending Contracts Analysis

Pending Contracts by Month



Month	2019	2020	2021
January	85	97	137
February	103	141	151
March	132	154	201
April	163	156	235
May	166	211	236
June	115	207	221
July	110	163	184
August	100	131	143
September	107	119	165
October	92	116	155
November	86	131	129
December	86	103	115

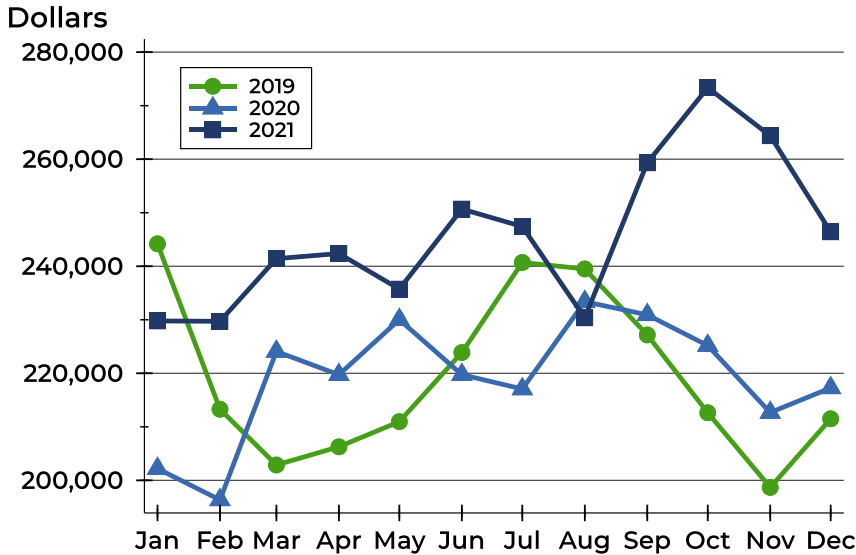
Pending Contracts by Price Range

Price Range	Pending Contracts		List Price		Days on Market		Price as % of Orig.	
	Number	Percent	Average	Median	Avg.	Med.	Avg.	Med.
Below \$25,000	0	0.0%	N/A	N/A	N/A	N/A	N/A	N/A
\$25,000-\$49,999	0	0.0%	N/A	N/A	N/A	N/A	N/A	N/A
\$50,000-\$99,999	3	2.6%	65,000	60,000	23	16	98.3%	100.0%
\$100,000-\$124,999	5	4.3%	115,140	115,000	74	51	95.6%	100.0%
\$125,000-\$149,999	16	13.9%	138,363	139,950	71	10	98.2%	100.0%
\$150,000-\$174,999	17	14.8%	161,482	160,000	40	33	97.8%	100.0%
\$175,000-\$199,999	14	12.2%	184,500	182,500	27	14	99.0%	100.0%
\$200,000-\$249,999	21	18.3%	227,429	225,000	29	8	99.3%	100.0%
\$250,000-\$299,999	15	13.0%	270,487	268,000	43	26	98.6%	100.0%
\$300,000-\$399,999	13	11.3%	341,123	345,900	43	16	97.2%	100.0%
\$400,000-\$499,999	5	4.3%	442,656	429,900	66	78	97.8%	100.0%
\$500,000-\$749,999	3	2.6%	573,333	550,000	24	12	100.0%	100.0%
\$750,000-\$999,999	2	1.7%	862,500	862,500	12	12	100.0%	100.0%
\$1,000,000 and up	1	0.9%	1,100,000	1,100,000	144	144	100.0%	100.0%



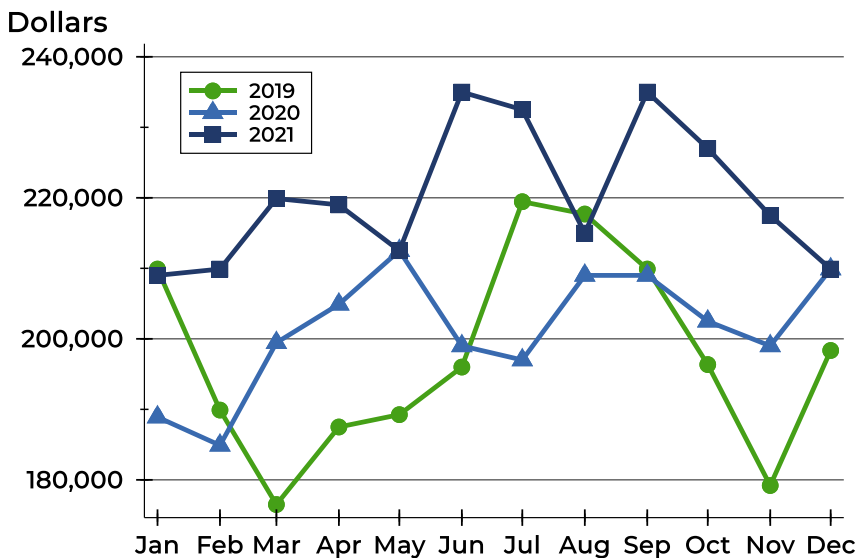
Riley County Pending Contracts Analysis

Average Price



Month	2019	2020	2021
January	244,194	202,199	229,781
February	213,292	196,352	229,712
March	202,871	224,078	241,420
April	206,271	219,735	242,377
May	210,969	230,029	235,738
June	223,881	219,742	250,688
July	240,706	217,070	247,424
August	239,497	233,377	230,364
September	227,173	230,927	259,319
October	212,632	225,181	273,363
November	198,680	212,669	264,377
December	211,500	217,276	246,425

Median Price

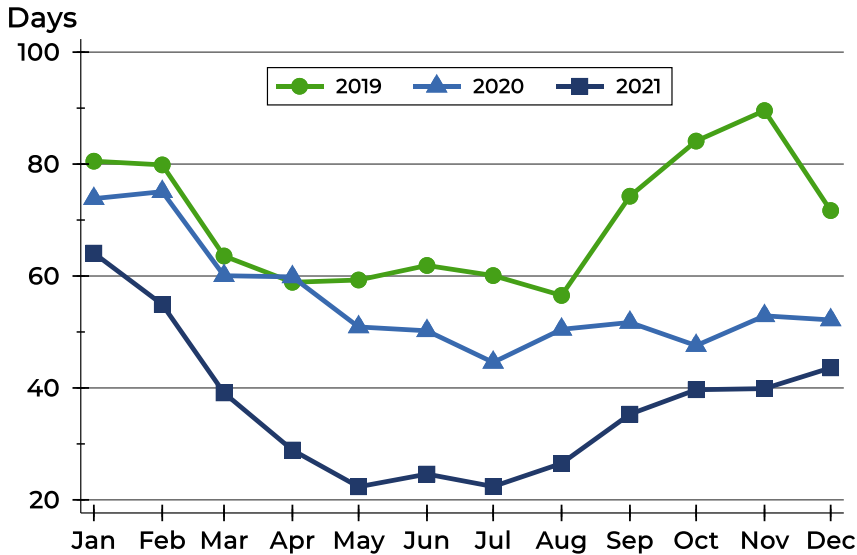


Month	2019	2020	2021
January	209,900	188,900	209,000
February	189,900	184,900	209,900
March	176,500	199,450	219,900
April	187,500	204,900	219,000
May	189,250	212,500	212,500
June	196,000	199,000	235,000
July	219,450	197,000	232,500
August	217,700	209,000	215,000
September	209,900	209,000	235,000
October	196,350	202,498	227,000
November	179,200	199,000	217,500
December	198,350	209,900	209,900



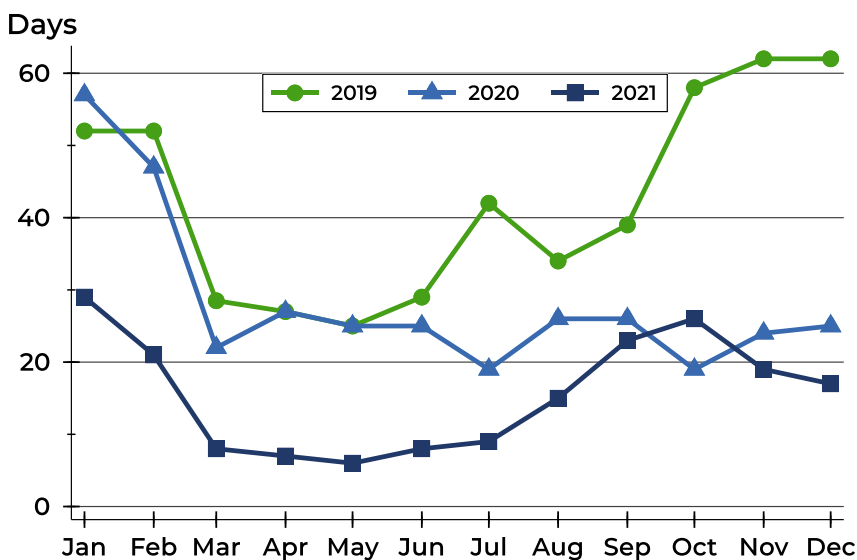
Riley County Pending Contracts Analysis

Average DOM



Month	2019	2020	2021
January	81	74	64
February	80	75	55
March	64	60	39
April	59	60	29
May	59	51	22
June	62	50	25
July	60	45	22
August	57	50	27
September	74	52	35
October	84	48	40
November	90	53	40
December	72	52	44

Median DOM



Month	2019	2020	2021
January	52	57	29
February	52	47	21
March	29	22	8
April	27	27	7
May	25	25	6
June	29	25	8
July	42	19	9
August	34	26	15
September	39	26	23
October	58	19	26
November	62	24	19
December	62	25	17