



Riley County Housing Report



Market Overview

Riley County Home Sales Rose in January

Total home sales in Riley County rose by 18.0% last month to 59 units, compared to 50 units in January 2021. Total sales volume was \$13.4 million, up 32.0% from a year earlier.

The median sale price in January was \$188,000, down from \$192,500 a year earlier. Homes that sold in January were typically on the market for 21 days and sold for 99.7% of their list prices.

Riley County Active Listings Down at End of January

The total number of active listings in Riley County at the end of January was 97 units, down from 159 at the same point in 2021. This represents a 1.0 months' supply of homes available for sale. The median list price of homes on the market at the end of January was \$232,000.

During January, a total of 81 contracts were written down from 93 in January 2021. At the end of the month, there were 124 contracts still pending.

Report Contents

- Summary Statistics – Page 2
- Closed Listing Analysis – Page 3
- Active Listings Analysis – Page 7
- Months' Supply Analysis – Page 11
- New Listings Analysis – Page 12
- Contracts Written Analysis – Page 15
- Pending Contracts Analysis – Page 19

Contact Information

Margaret Pendleton, Association Executive
 Flint Hills Association of REALTORS®
 205 S. Seth Child Road
 Manhattan, KS 66502
 685-776-1212
ae@flinthillsrealtors.net
www.flinthillsrealtors.net



Riley County Summary Statistics

| January MLS Statistics Three-year History | | Current Month | | | Year-to-Date | | |
|--|------------------------------|----------------|----------------|----------------|----------------|----------------|----------------|
| | | 2022 | 2021 | 2020 | 2022 | 2021 | 2020 |
| Home Sales | | 59 | 50 | 47 | 59 | 50 | 47 |
| Change from prior year | | 18.0% | 6.4% | 42.4% | 18.0% | 6.4% | 42.4% |
| Active Listings | | 97 | 159 | 299 | N/A | N/A | N/A |
| Change from prior year | | -39.0% | -46.8% | -2.6% | | | |
| Months' Supply | | 1.0 | 2.0 | 4.5 | N/A | N/A | N/A |
| Change from prior year | | -50.0% | -55.6% | -4.3% | | | |
| New Listings | | 72 | 91 | 104 | 72 | 91 | 104 |
| Change from prior year | | -20.9% | -12.5% | 1.0% | -20.9% | -12.5% | 1.0% |
| Contracts Written | | 81 | 93 | 57 | 81 | 93 | 57 |
| Change from prior year | | -12.9% | 63.2% | 29.5% | -12.9% | 63.2% | 29.5% |
| Pending Contracts | | 124 | 137 | 97 | N/A | N/A | N/A |
| Change from prior year | | -9.5% | 41.2% | 14.1% | | | |
| Sales Volume (1,000s) | | 13,387 | 10,141 | 9,783 | 13,387 | 10,141 | 9,783 |
| Change from prior year | | 32.0% | 3.7% | 26.3% | 32.0% | 3.7% | 26.3% |
| Average | Sale Price | 226,905 | 202,830 | 208,157 | 226,905 | 202,830 | 208,157 |
| | Change from prior year | 11.9% | -2.6% | -11.3% | 11.9% | -2.6% | -11.3% |
| | List Price of Actives | 294,980 | 262,929 | 237,490 | N/A | N/A | N/A |
| | Change from prior year | 12.2% | 10.7% | -2.1% | | | |
| | Days on Market | 49 | 51 | 81 | 49 | 51 | 81 |
| Change from prior year | -3.9% | -37.0% | 2.5% | -3.9% | -37.0% | 2.5% | |
| Percent of List | 98.1% | 97.0% | 98.5% | 98.1% | 97.0% | 98.5% | |
| Change from prior year | 1.1% | -1.5% | 0.5% | 1.1% | -1.5% | 0.5% | |
| Percent of Original | 95.1% | 95.7% | 94.5% | 95.1% | 95.7% | 94.5% | |
| Change from prior year | -0.6% | 1.3% | -1.3% | -0.6% | 1.3% | -1.3% | |
| Median | Sale Price | 188,000 | 192,500 | 195,000 | 188,000 | 192,500 | 195,000 |
| | Change from prior year | -2.3% | -1.3% | -11.4% | -2.3% | -1.3% | -11.4% |
| | List Price of Actives | 232,000 | 210,000 | 185,000 | N/A | N/A | N/A |
| | Change from prior year | 10.5% | 13.5% | -2.4% | | | |
| | Days on Market | 21 | 33 | 58 | 21 | 33 | 58 |
| Change from prior year | -36.4% | -43.1% | -7.9% | -36.4% | -43.1% | -7.9% | |
| Percent of List | 99.7% | 98.4% | 98.6% | 99.7% | 98.4% | 98.6% | |
| Change from prior year | 1.3% | -0.2% | -0.1% | 1.3% | -0.2% | -0.1% | |
| Percent of Original | 98.0% | 98.2% | 97.0% | 98.0% | 98.2% | 97.0% | |
| Change from prior year | -0.2% | 1.2% | -0.6% | -0.2% | 1.2% | -0.6% | |

Note: Year-to-date statistics cannot be calculated for Active Listings, Months' Supply and Pending Contracts.



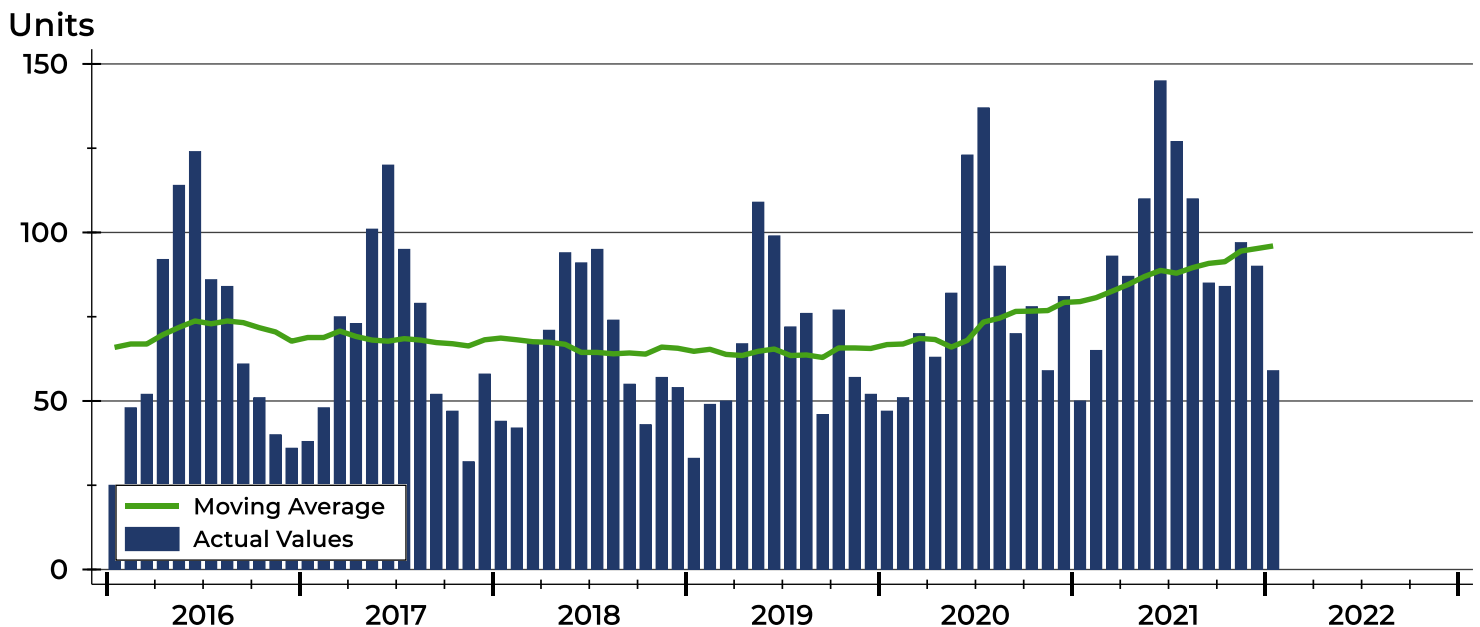
Riley County Closed Listings Analysis

| Summary Statistics for Closed Listings | | 2022 | January 2021 | Change | 2022 | Year-to-Date 2021 | Change |
|--|---------------------|----------------|--------------|--------|----------------|-------------------|--------|
| Closed Listings | | 59 | 50 | 18.0% | 59 | 50 | 18.0% |
| Volume (1,000s) | | 13,387 | 10,141 | 32.0% | 13,387 | 10,141 | 32.0% |
| Months' Supply | | 1.0 | 2.0 | -50.0% | N/A | N/A | N/A |
| Average | Sale Price | 226,905 | 202,830 | 11.9% | 226,905 | 202,830 | 11.9% |
| | Days on Market | 49 | 51 | -3.9% | 49 | 51 | -3.9% |
| | Percent of List | 98.1% | 97.0% | 1.1% | 98.1% | 97.0% | 1.1% |
| | Percent of Original | 95.1% | 95.7% | -0.6% | 95.1% | 95.7% | -0.6% |
| Median | Sale Price | 188,000 | 192,500 | -2.3% | 188,000 | 192,500 | -2.3% |
| | Days on Market | 21 | 33 | -36.4% | 21 | 33 | -36.4% |
| | Percent of List | 99.7% | 98.4% | 1.3% | 99.7% | 98.4% | 1.3% |
| | Percent of Original | 98.0% | 98.2% | -0.2% | 98.0% | 98.2% | -0.2% |

A total of 59 homes sold in Riley County in January, up from 50 units in January 2021. Total sales volume rose to \$13.4 million compared to \$10.1 million in the previous year.

The median sales price in January was \$188,000, down 2.3% compared to the prior year. Median days on market was 21 days, up from 16 days in December, but down from 33 in January 2021.

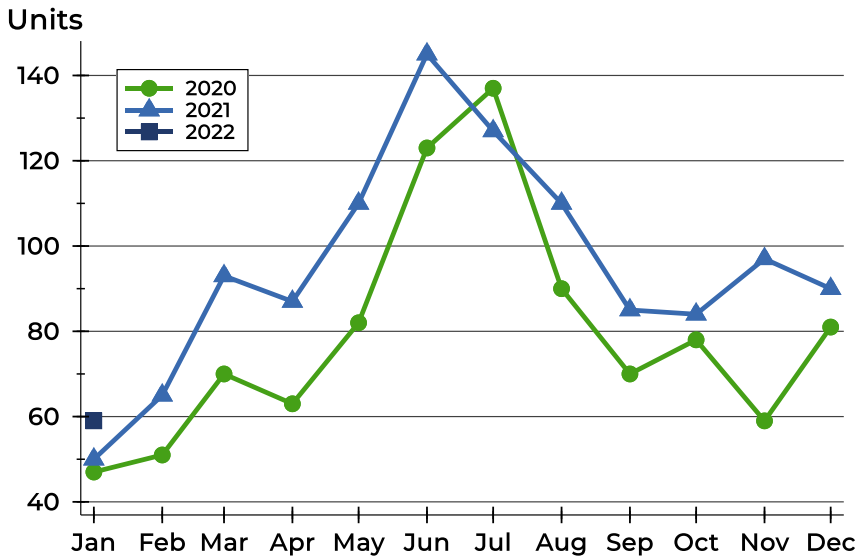
History of Closed Listings





Riley County Closed Listings Analysis

Closed Listings by Month



| Month | 2020 | 2021 | 2022 |
|------------------|------|------|-----------|
| January | 47 | 50 | 59 |
| February | 51 | 65 | |
| March | 70 | 93 | |
| April | 63 | 87 | |
| May | 82 | 110 | |
| June | 123 | 145 | |
| July | 137 | 127 | |
| August | 90 | 110 | |
| September | 70 | 85 | |
| October | 78 | 84 | |
| November | 59 | 97 | |
| December | 81 | 90 | |

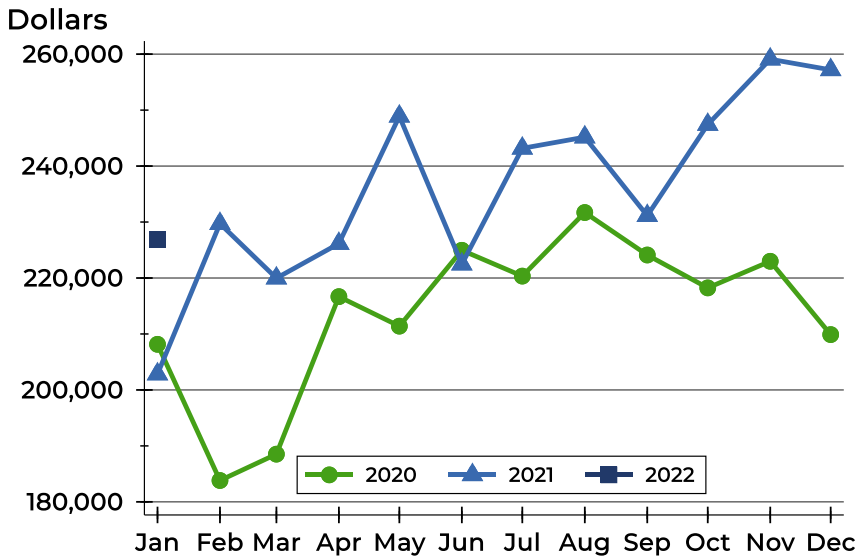
Closed Listings by Price Range

| Price Range | Sales | | Months' Supply | Sale Price | | Days on Market | | Price as % of List | | Price as % of Orig. | |
|---------------------|--------|---------|----------------|------------|---------|----------------|------|--------------------|--------|---------------------|--------|
| | Number | Percent | | Average | Median | Avg. | Med. | Avg. | Med. | Avg. | Med. |
| Below \$25,000 | 0 | 0.0% | N/A | N/A | N/A | N/A | N/A | N/A | N/A | N/A | N/A |
| \$25,000-\$49,999 | 0 | 0.0% | N/A | N/A | N/A | N/A | N/A | N/A | N/A | N/A | N/A |
| \$50,000-\$99,999 | 2 | 3.4% | 1.6 | 65,500 | 65,500 | 12 | 12 | 92.3% | 92.3% | 92.3% | 92.3% |
| \$100,000-\$124,999 | 2 | 3.4% | 2.1 | 100,000 | 100,000 | 62 | 62 | 95.5% | 95.5% | 80.9% | 80.9% |
| \$125,000-\$149,999 | 11 | 18.6% | 1.1 | 136,318 | 137,000 | 91 | 48 | 95.5% | 96.2% | 88.7% | 91.5% |
| \$150,000-\$174,999 | 10 | 16.9% | 0.6 | 159,325 | 159,000 | 73 | 25 | 99.1% | 100.0% | 98.7% | 100.0% |
| \$175,000-\$199,999 | 7 | 11.9% | 0.5 | 187,714 | 187,500 | 12 | 9 | 99.7% | 101.1% | 98.1% | 100.3% |
| \$200,000-\$249,999 | 6 | 10.2% | 0.8 | 219,417 | 215,750 | 33 | 18 | 100.8% | 100.5% | 99.6% | 98.5% |
| \$250,000-\$299,999 | 9 | 15.3% | 0.8 | 271,189 | 267,000 | 42 | 26 | 99.5% | 99.7% | 97.2% | 99.3% |
| \$300,000-\$399,999 | 8 | 13.6% | 0.9 | 333,806 | 330,500 | 35 | 19 | 97.4% | 97.4% | 95.3% | 96.6% |
| \$400,000-\$499,999 | 2 | 3.4% | 2.0 | 452,000 | 452,000 | 31 | 31 | 98.8% | 98.8% | 95.7% | 95.7% |
| \$500,000-\$749,999 | 2 | 3.4% | 2.2 | 658,990 | 658,990 | 18 | 18 | 97.7% | 97.7% | 95.5% | 95.5% |
| \$750,000-\$999,999 | 0 | 0.0% | N/A | N/A | N/A | N/A | N/A | N/A | N/A | N/A | N/A |
| \$1,000,000 and up | 0 | 0.0% | N/A | N/A | N/A | N/A | N/A | N/A | N/A | N/A | N/A |



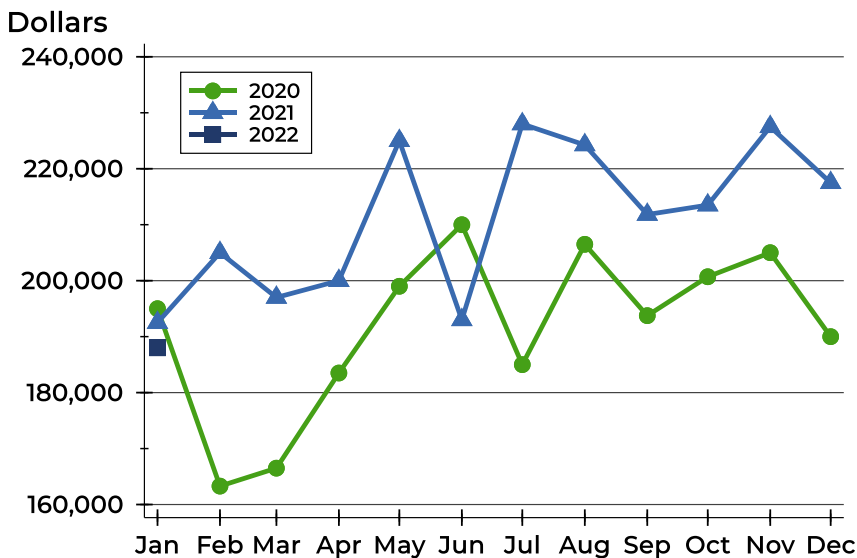
Riley County Closed Listings Analysis

Average Price



| Month | 2020 | 2021 | 2022 |
|------------------|---------|---------|----------------|
| January | 208,157 | 202,830 | 226,905 |
| February | 183,819 | 229,715 | |
| March | 188,530 | 219,973 | |
| April | 216,671 | 226,152 | |
| May | 211,400 | 248,898 | |
| June | 224,955 | 222,470 | |
| July | 220,343 | 243,175 | |
| August | 231,701 | 245,172 | |
| September | 224,114 | 231,140 | |
| October | 218,236 | 247,422 | |
| November | 222,989 | 259,098 | |
| December | 209,890 | 257,195 | |

Median Price

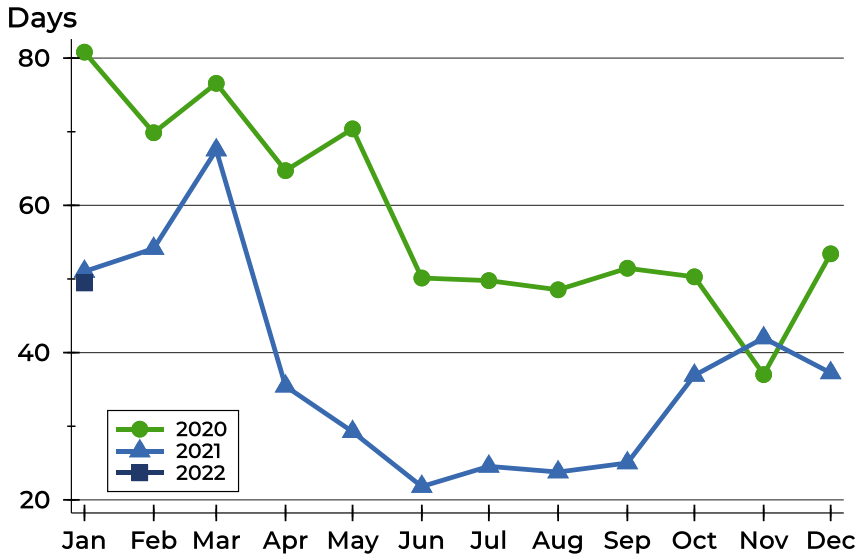


| Month | 2020 | 2021 | 2022 |
|------------------|---------|---------|----------------|
| January | 195,000 | 192,500 | 188,000 |
| February | 163,295 | 205,000 | |
| March | 166,500 | 197,000 | |
| April | 183,500 | 200,000 | |
| May | 199,000 | 225,000 | |
| June | 210,000 | 193,000 | |
| July | 185,000 | 228,000 | |
| August | 206,500 | 224,250 | |
| September | 193,750 | 211,819 | |
| October | 200,700 | 213,500 | |
| November | 205,000 | 227,500 | |
| December | 190,000 | 217,500 | |



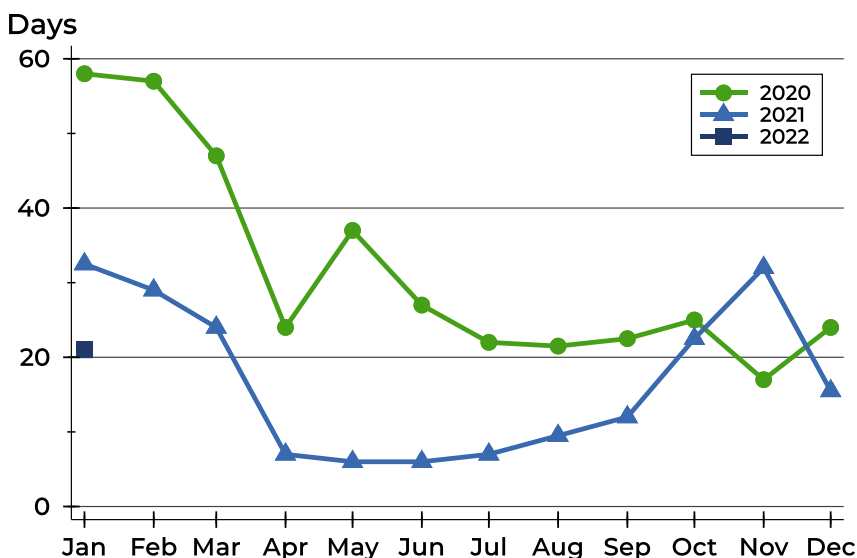
Riley County Closed Listings Analysis

Average DOM



| Month | 2020 | 2021 | 2022 |
|-----------|------|------|-----------|
| January | 81 | 51 | 49 |
| February | 70 | 54 | |
| March | 77 | 68 | |
| April | 65 | 35 | |
| May | 70 | 29 | |
| June | 50 | 22 | |
| July | 50 | 25 | |
| August | 49 | 24 | |
| September | 51 | 25 | |
| October | 50 | 37 | |
| November | 37 | 42 | |
| December | 53 | 37 | |

Median DOM



| Month | 2020 | 2021 | 2022 |
|-----------|------|------|-----------|
| January | 58 | 33 | 21 |
| February | 57 | 29 | |
| March | 47 | 24 | |
| April | 24 | 7 | |
| May | 37 | 6 | |
| June | 27 | 6 | |
| July | 22 | 7 | |
| August | 22 | 10 | |
| September | 23 | 12 | |
| October | 25 | 23 | |
| November | 17 | 32 | |
| December | 24 | 16 | |



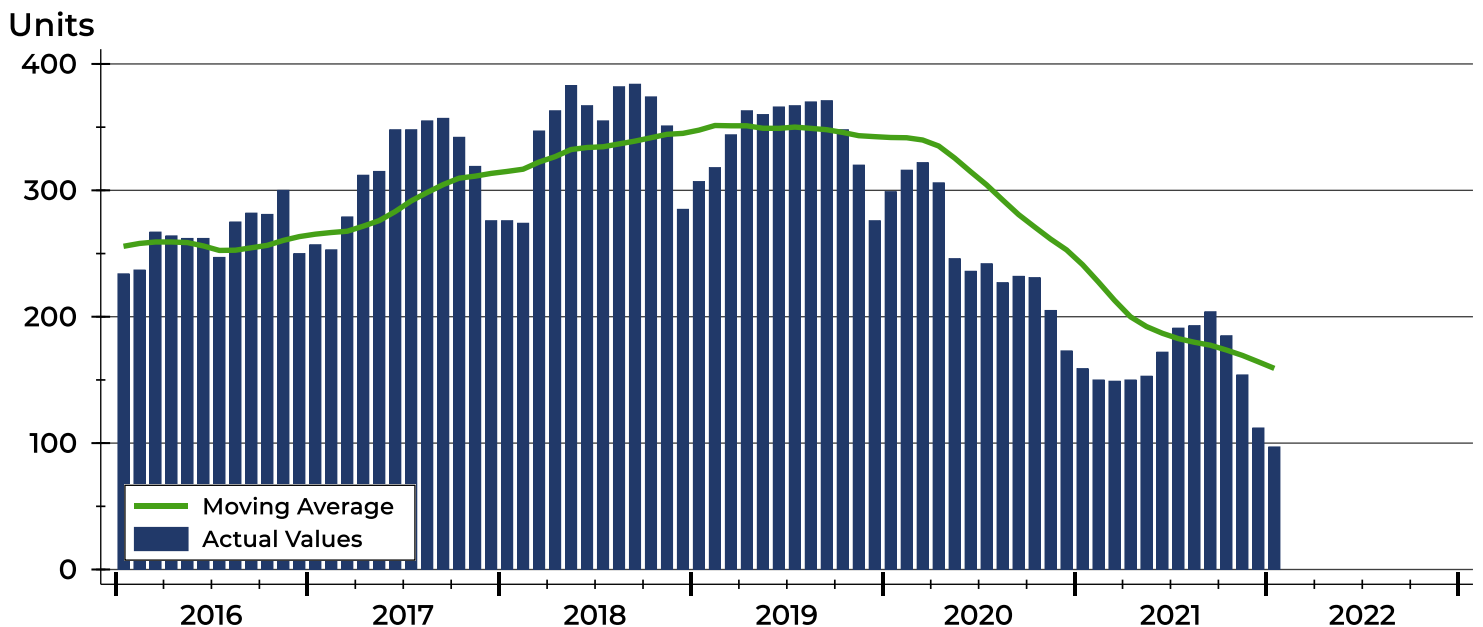
Riley County Active Listings Analysis

| Summary Statistics for Active Listings | | 2022 | End of January 2021 | Change |
|--|---------------------|----------------|---------------------|--------|
| Active Listings | | 97 | 159 | -39.0% |
| Volume (1,000s) | | 28,613 | 41,806 | -31.6% |
| Months' Supply | | 1.0 | 2.0 | -50.0% |
| Average | List Price | 294,980 | 262,929 | 12.2% |
| | Days on Market | 88 | 102 | -13.7% |
| | Percent of Original | 98.0% | 97.7% | 0.3% |
| Median | List Price | 232,000 | 210,000 | 10.5% |
| | Days on Market | 56 | 77 | -27.3% |
| | Percent of Original | 100.0% | 100.0% | 0.0% |

A total of 97 homes were available for sale in Riley County at the end of January. This represents a 1.0 months' supply of active listings.

The median list price of homes on the market at the end of January was \$232,000, up 10.5% from 2021. The typical time on market for active listings was 56 days, down from 77 days a year earlier.

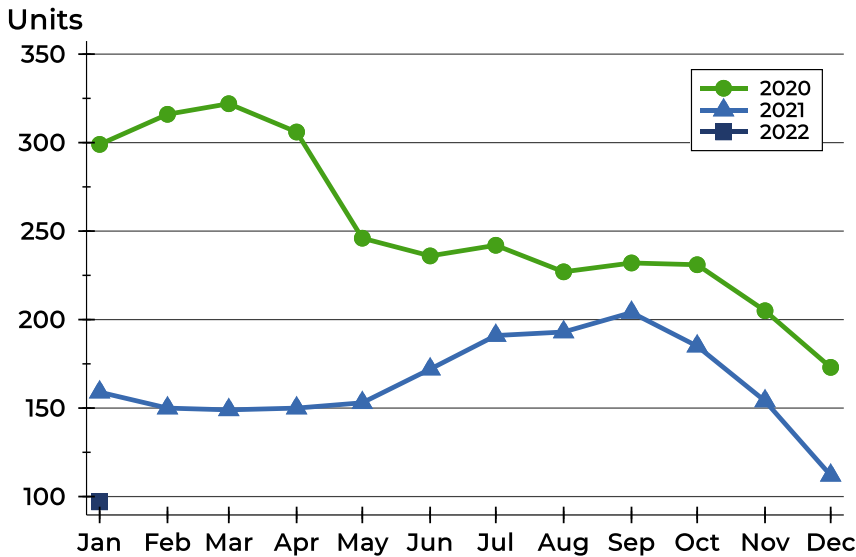
History of Active Listings





Riley County Active Listings Analysis

Active Listings by Month



| Month | 2020 | 2021 | 2022 |
|------------------|------|------|-----------|
| January | 299 | 159 | 97 |
| February | 316 | 150 | |
| March | 322 | 149 | |
| April | 306 | 150 | |
| May | 246 | 153 | |
| June | 236 | 172 | |
| July | 242 | 191 | |
| August | 227 | 193 | |
| September | 232 | 204 | |
| October | 231 | 185 | |
| November | 205 | 154 | |
| December | 173 | 112 | |

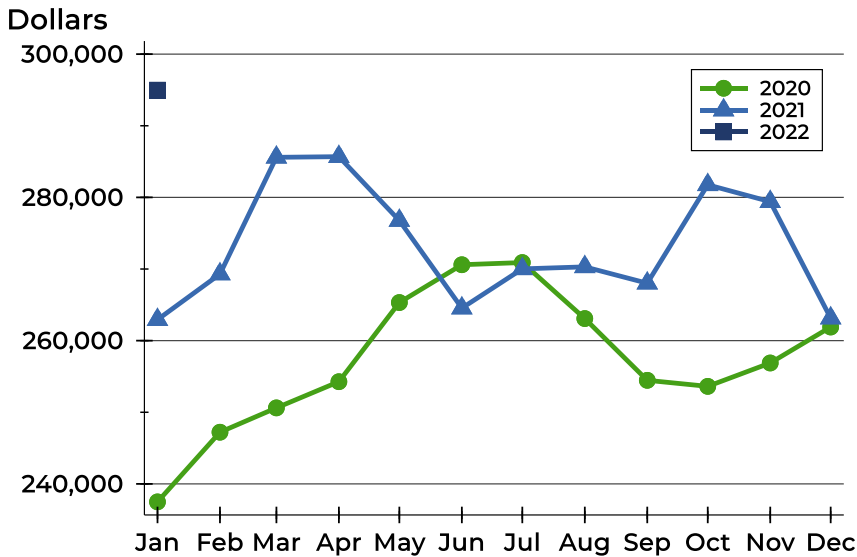
Active Listings by Price Range

| Price Range | Active Listings | | Months' Supply | List Price | | Days on Market | | Price as % of Orig. | |
|---------------------|-----------------|---------|----------------|------------|-----------|----------------|------|---------------------|--------|
| | Number | Percent | | Average | Median | Avg. | Med. | Avg. | Med. |
| Below \$25,000 | 0 | 0.0% | N/A | N/A | N/A | N/A | N/A | N/A | N/A |
| \$25,000-\$49,999 | 0 | 0.0% | N/A | N/A | N/A | N/A | N/A | N/A | N/A |
| \$50,000-\$99,999 | 6 | 6.2% | 1.6 | 88,383 | 90,500 | 89 | 61 | 97.3% | 100.0% |
| \$100,000-\$124,999 | 11 | 11.3% | 2.1 | 113,982 | 115,000 | 58 | 50 | 95.2% | 100.0% |
| \$125,000-\$149,999 | 11 | 11.3% | 1.1 | 138,664 | 140,000 | 84 | 61 | 98.4% | 100.0% |
| \$150,000-\$174,999 | 8 | 8.2% | 0.6 | 162,675 | 160,500 | 54 | 36 | 99.4% | 100.0% |
| \$175,000-\$199,999 | 6 | 6.2% | 0.5 | 184,317 | 183,500 | 48 | 16 | 98.7% | 100.0% |
| \$200,000-\$249,999 | 12 | 12.4% | 0.8 | 227,500 | 228,500 | 186 | 73 | 97.6% | 100.0% |
| \$250,000-\$299,999 | 10 | 10.3% | 0.8 | 274,350 | 274,900 | 45 | 31 | 98.3% | 100.0% |
| \$300,000-\$399,999 | 15 | 15.5% | 0.9 | 350,536 | 357,900 | 100 | 85 | 98.6% | 100.0% |
| \$400,000-\$499,999 | 7 | 7.2% | 2.0 | 449,912 | 424,900 | 113 | 126 | 98.9% | 100.0% |
| \$500,000-\$749,999 | 6 | 6.2% | 2.2 | 582,233 | 557,450 | 43 | 21 | 100.8% | 100.0% |
| \$750,000-\$999,999 | 3 | 3.1% | N/A | 949,000 | 958,000 | 62 | 29 | 93.3% | 100.0% |
| \$1,000,000 and up | 2 | 2.1% | N/A | 1,337,500 | 1,337,500 | 162 | 162 | 100.0% | 100.0% |



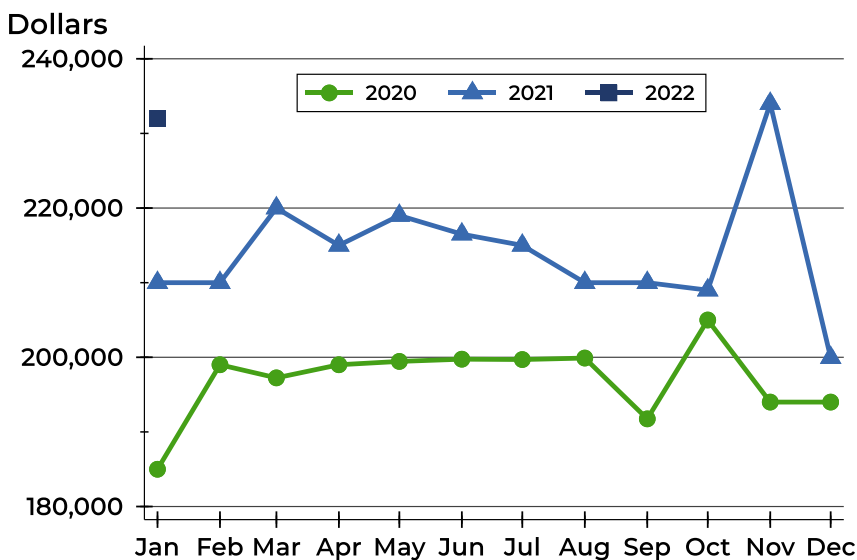
Riley County Active Listings Analysis

Average Price



| Month | 2020 | 2021 | 2022 |
|------------------|---------|---------|----------------|
| January | 237,490 | 262,929 | 294,980 |
| February | 247,217 | 269,299 | |
| March | 250,613 | 285,597 | |
| April | 254,270 | 285,687 | |
| May | 265,322 | 276,770 | |
| June | 270,600 | 264,539 | |
| July | 270,904 | 270,021 | |
| August | 263,083 | 270,304 | |
| September | 254,462 | 268,017 | |
| October | 253,619 | 281,756 | |
| November | 256,881 | 279,402 | |
| December | 261,905 | 263,144 | |

Median Price

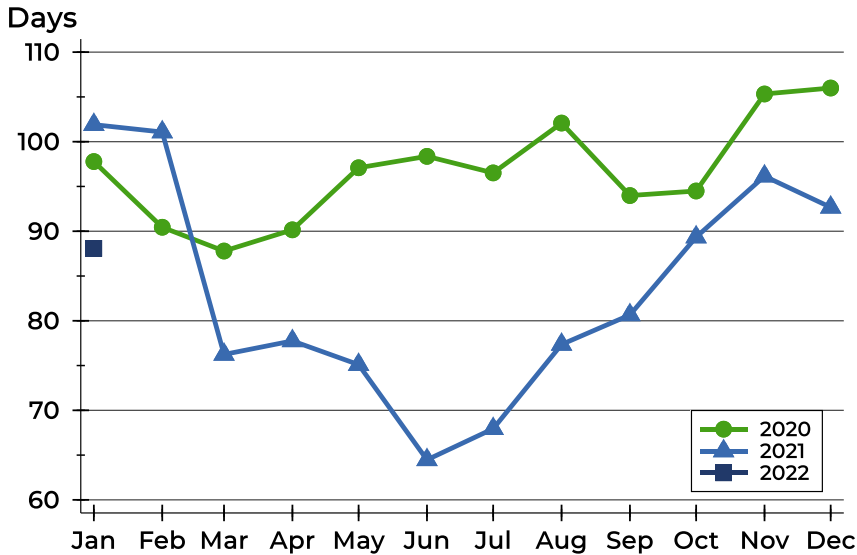


| Month | 2020 | 2021 | 2022 |
|------------------|---------|---------|----------------|
| January | 185,000 | 210,000 | 232,000 |
| February | 199,000 | 210,000 | |
| March | 197,245 | 220,000 | |
| April | 199,000 | 215,000 | |
| May | 199,450 | 219,000 | |
| June | 199,748 | 216,500 | |
| July | 199,700 | 215,000 | |
| August | 199,900 | 210,000 | |
| September | 191,750 | 210,000 | |
| October | 205,000 | 209,000 | |
| November | 194,000 | 234,000 | |
| December | 194,000 | 199,950 | |



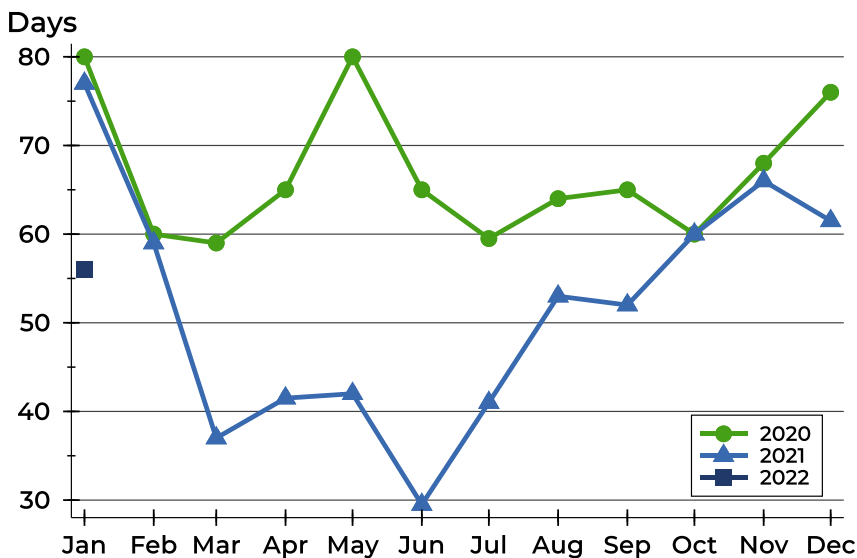
Riley County Active Listings Analysis

Average DOM



| Month | 2020 | 2021 | 2022 |
|-----------|------|------|-----------|
| January | 98 | 102 | 88 |
| February | 90 | 101 | |
| March | 88 | 76 | |
| April | 90 | 78 | |
| May | 97 | 75 | |
| June | 98 | 64 | |
| July | 97 | 68 | |
| August | 102 | 77 | |
| September | 94 | 81 | |
| October | 94 | 89 | |
| November | 105 | 96 | |
| December | 106 | 93 | |

Median DOM

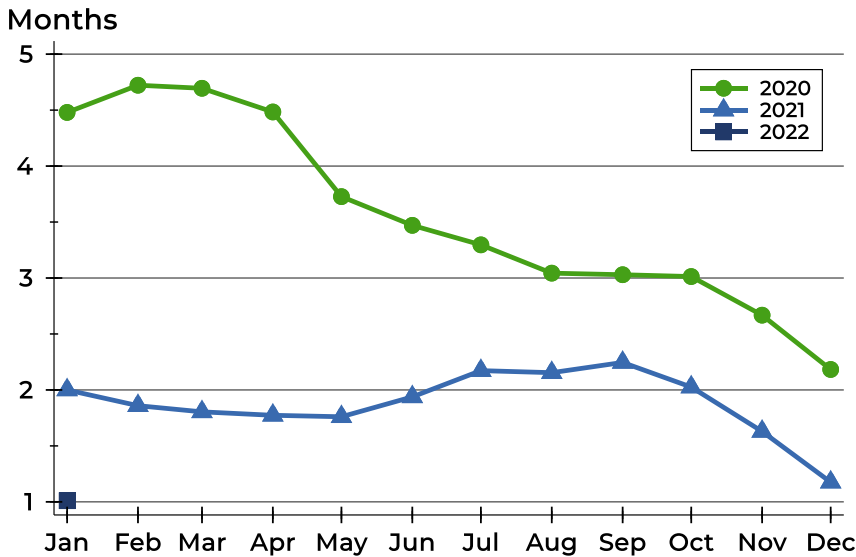


| Month | 2020 | 2021 | 2022 |
|-----------|------|------|-----------|
| January | 80 | 77 | 56 |
| February | 60 | 59 | |
| March | 59 | 37 | |
| April | 65 | 42 | |
| May | 80 | 42 | |
| June | 65 | 30 | |
| July | 60 | 41 | |
| August | 64 | 53 | |
| September | 65 | 52 | |
| October | 60 | 60 | |
| November | 68 | 66 | |
| December | 76 | 62 | |



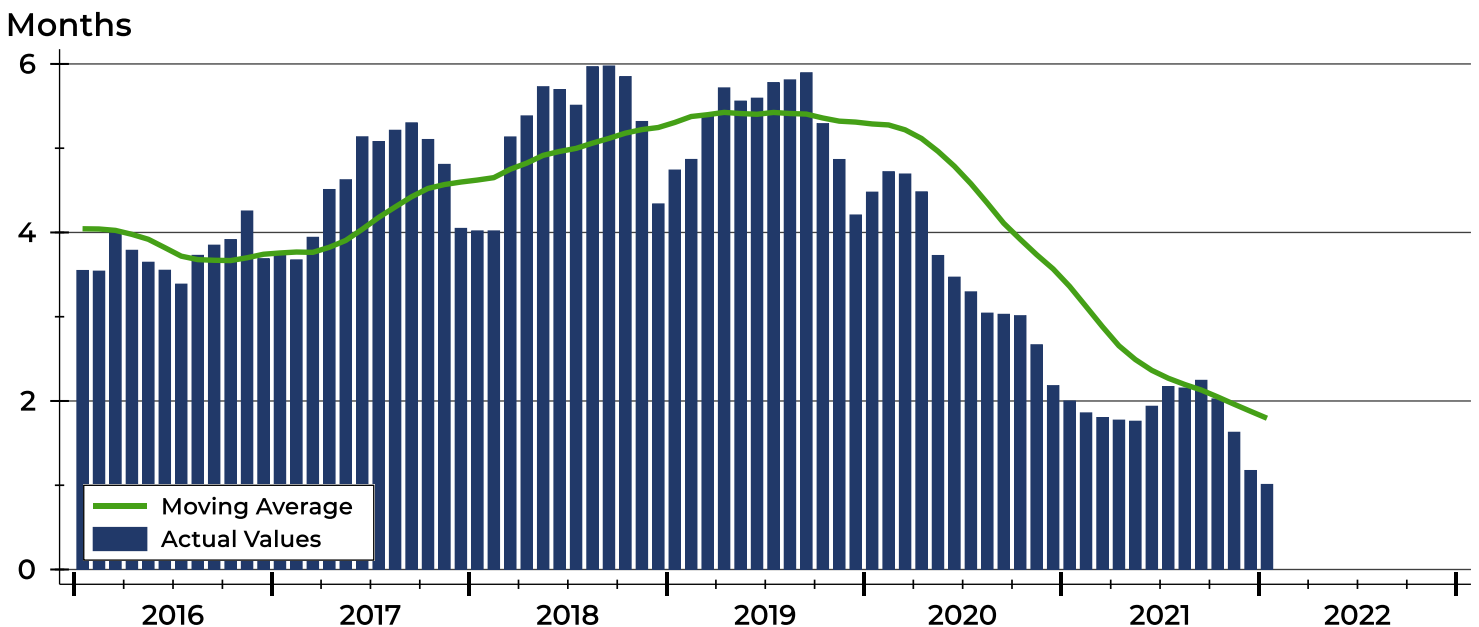
Riley County Months' Supply Analysis

Months' Supply by Month



| Month | 2020 | 2021 | 2022 |
|-----------|------|------|------|
| January | 4.5 | 2.0 | 1.0 |
| February | 4.7 | 1.9 | |
| March | 4.7 | 1.8 | |
| April | 4.5 | 1.8 | |
| May | 3.7 | 1.8 | |
| June | 3.5 | 1.9 | |
| July | 3.3 | 2.2 | |
| August | 3.0 | 2.2 | |
| September | 3.0 | 2.2 | |
| October | 3.0 | 2.0 | |
| November | 2.7 | 1.6 | |
| December | 2.2 | 1.2 | |

History of Month's Supply





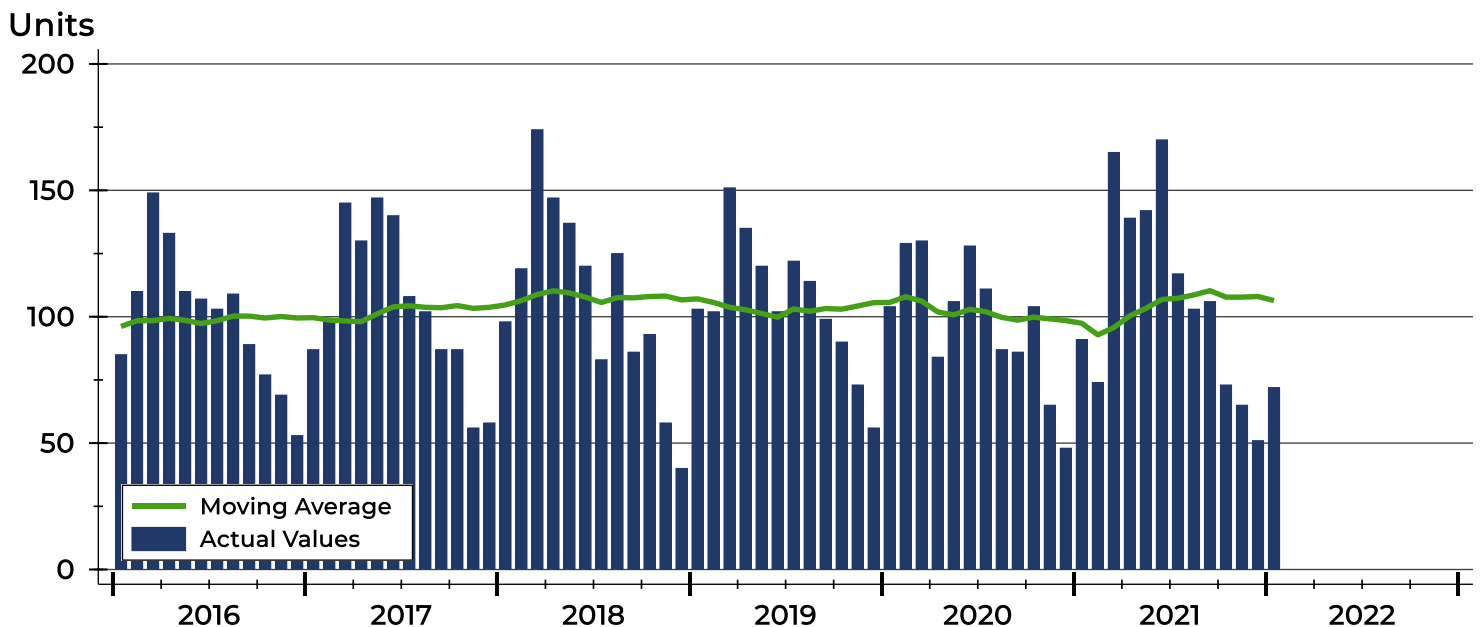
Riley County New Listings Analysis

| Summary Statistics for New Listings | | 2022 | January 2021 | Change |
|-------------------------------------|--------------------|----------------|--------------|--------|
| Current Month | New Listings | 72 | 91 | -20.9% |
| | Volume (1,000s) | 19,949 | 22,012 | -9.4% |
| | Average List Price | 277,075 | 241,888 | 14.5% |
| | Median List Price | 215,000 | 210,000 | 2.4% |
| Year-to-Date | New Listings | 72 | 91 | -20.9% |
| | Volume (1,000s) | 19,949 | 22,012 | -9.4% |
| | Average List Price | 277,075 | 241,888 | 14.5% |
| | Median List Price | 215,000 | 210,000 | 2.4% |

A total of 72 new listings were added in Riley County during January, down 20.9% from the same month in 2021.

The median list price of these homes was \$215,000 up from \$210,000 in 2021.

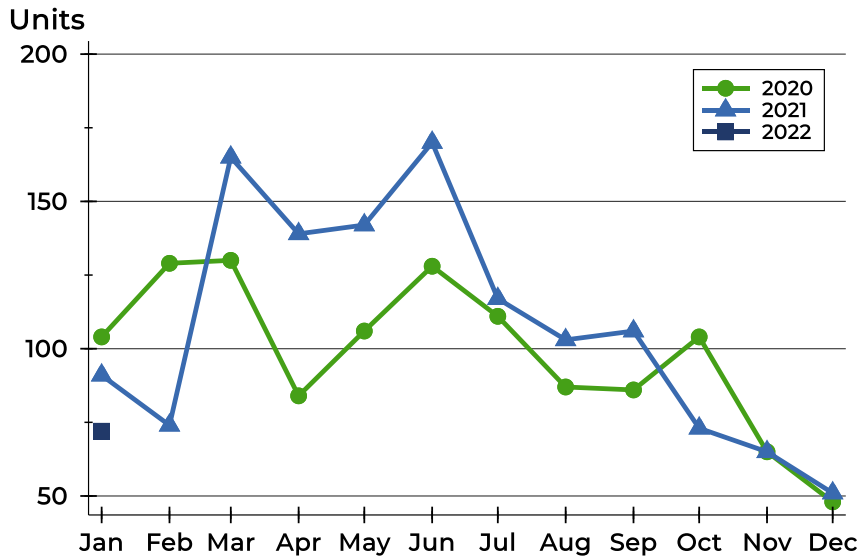
History of New Listings





Riley County New Listings Analysis

New Listings by Month



| Month | 2020 | 2021 | 2022 |
|------------------|------|------|-----------|
| January | 104 | 91 | 72 |
| February | 129 | 74 | |
| March | 130 | 165 | |
| April | 84 | 139 | |
| May | 106 | 142 | |
| June | 128 | 170 | |
| July | 111 | 117 | |
| August | 87 | 103 | |
| September | 86 | 106 | |
| October | 104 | 73 | |
| November | 65 | 65 | |
| December | 48 | 51 | |

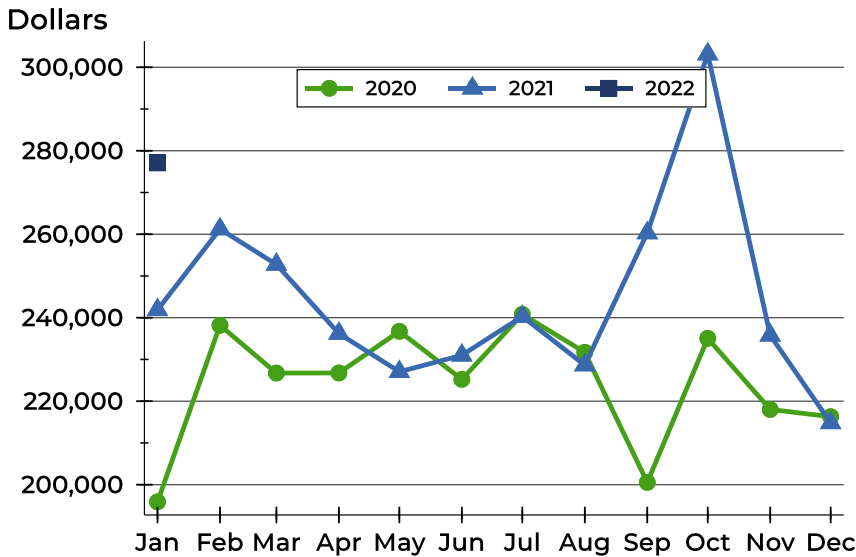
New Listings by Price Range

| Price Range | New Listings | | List Price | | Days on Market | | Price as % of Orig. | |
|---------------------|--------------|---------|------------|-----------|----------------|------|---------------------|--------|
| | Number | Percent | Average | Median | Avg. | Med. | Avg. | Med. |
| Below \$25,000 | 0 | 0.0% | N/A | N/A | N/A | N/A | N/A | N/A |
| \$25,000-\$49,999 | 0 | 0.0% | N/A | N/A | N/A | N/A | N/A | N/A |
| \$50,000-\$99,999 | 2 | 2.8% | 60,000 | 60,000 | 9 | 9 | 93.4% | 93.4% |
| \$100,000-\$124,999 | 3 | 4.2% | 116,667 | 115,000 | 6 | 5 | 100.0% | 100.0% |
| \$125,000-\$149,999 | 8 | 11.1% | 135,800 | 134,700 | 13 | 13 | 100.0% | 100.0% |
| \$150,000-\$174,999 | 5 | 6.9% | 161,800 | 160,000 | 11 | 7 | 100.0% | 100.0% |
| \$175,000-\$199,999 | 13 | 18.1% | 185,292 | 184,000 | 7 | 4 | 99.6% | 100.0% |
| \$200,000-\$249,999 | 14 | 19.4% | 227,171 | 236,500 | 8 | 4 | 100.0% | 100.0% |
| \$250,000-\$299,999 | 8 | 11.1% | 271,925 | 268,250 | 15 | 10 | 100.0% | 100.0% |
| \$300,000-\$399,999 | 9 | 12.5% | 324,633 | 319,000 | 10 | 3 | 100.0% | 100.0% |
| \$400,000-\$499,999 | 3 | 4.2% | 439,600 | 424,900 | 20 | 26 | 100.0% | 100.0% |
| \$500,000-\$749,999 | 4 | 5.6% | 553,725 | 529,950 | 20 | 20 | 100.0% | 100.0% |
| \$750,000-\$999,999 | 2 | 2.8% | 944,500 | 944,500 | 26 | 26 | 100.0% | 100.0% |
| \$1,000,000 and up | 1 | 1.4% | 1,475,000 | 1,475,000 | 34 | 34 | 100.0% | 100.0% |



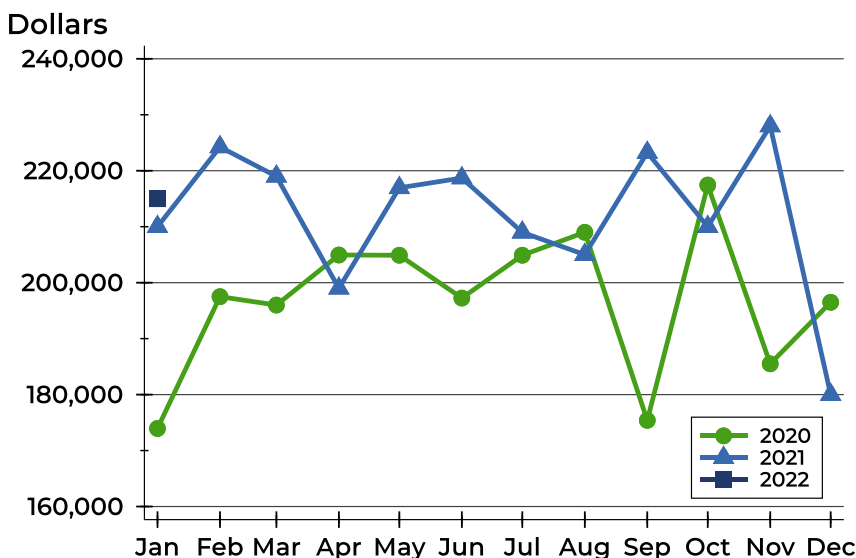
Riley County New Listings Analysis

Average Price



| Month | 2020 | 2021 | 2022 |
|------------------|---------|---------|----------------|
| January | 195,887 | 241,888 | 277,075 |
| February | 238,191 | 261,254 | |
| March | 226,747 | 252,772 | |
| April | 226,764 | 236,225 | |
| May | 236,745 | 227,067 | |
| June | 225,242 | 231,010 | |
| July | 240,816 | 240,298 | |
| August | 231,720 | 228,658 | |
| September | 200,543 | 260,297 | |
| October | 235,066 | 303,145 | |
| November | 218,030 | 235,795 | |
| December | 216,300 | 214,811 | |

Median Price



| Month | 2020 | 2021 | 2022 |
|------------------|---------|---------|----------------|
| January | 173,950 | 210,000 | 215,000 |
| February | 197,500 | 224,250 | |
| March | 196,000 | 219,000 | |
| April | 204,948 | 199,000 | |
| May | 204,900 | 216,950 | |
| June | 197,250 | 218,700 | |
| July | 204,900 | 209,000 | |
| August | 209,000 | 205,000 | |
| September | 175,400 | 223,250 | |
| October | 217,450 | 209,999 | |
| November | 185,500 | 228,000 | |
| December | 196,500 | 180,000 | |



Riley County Contracts Written Analysis

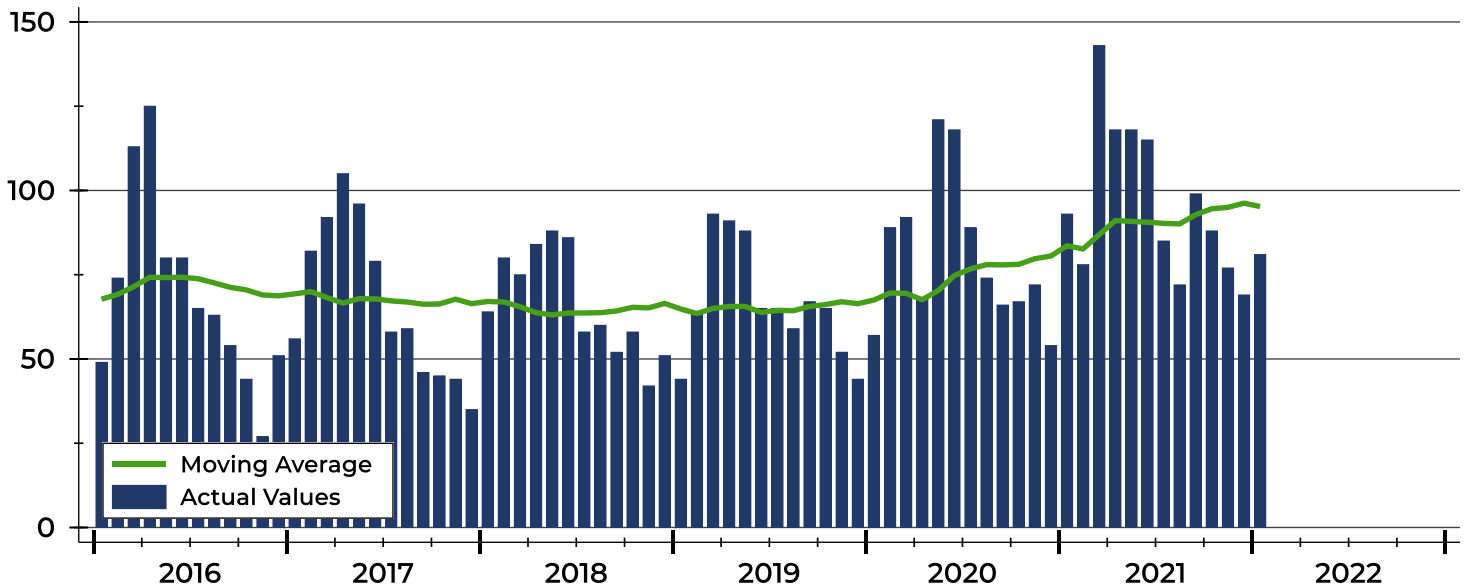
| Summary Statistics for Contracts Written | | 2022 | January 2021 | Change | 2022 | Year-to-Date 2021 | Change |
|--|---------------------|----------------|--------------|--------|----------------|-------------------|--------|
| Contracts Written | | 81 | 93 | -12.9% | 81 | 93 | -12.9% |
| Volume (1,000s) | | 18,024 | 21,379 | -15.7% | 18,024 | 21,379 | -15.7% |
| Average | Sale Price | 222,523 | 229,883 | -3.2% | 222,523 | 229,883 | -3.2% |
| | Days on Market | 49 | 69 | -29.0% | 49 | 69 | -29.0% |
| | Percent of Original | 98.2% | 97.5% | 0.7% | 98.2% | 97.5% | 0.7% |
| Median | Sale Price | 200,000 | 200,000 | 0.0% | 200,000 | 200,000 | 0.0% |
| | Days on Market | 13 | 30 | -56.7% | 13 | 30 | -56.7% |
| | Percent of Original | 100.0% | 98.1% | 1.9% | 100.0% | 98.1% | 1.9% |

A total of 81 contracts for sale were written in Riley County during the month of January, down from 93 in 2021. The median list price of these homes was \$200,000, the same as the prior year.

Half of the homes that went under contract in January were on the market less than 13 days, compared to 30 days in January 2021.

History of Contracts Written

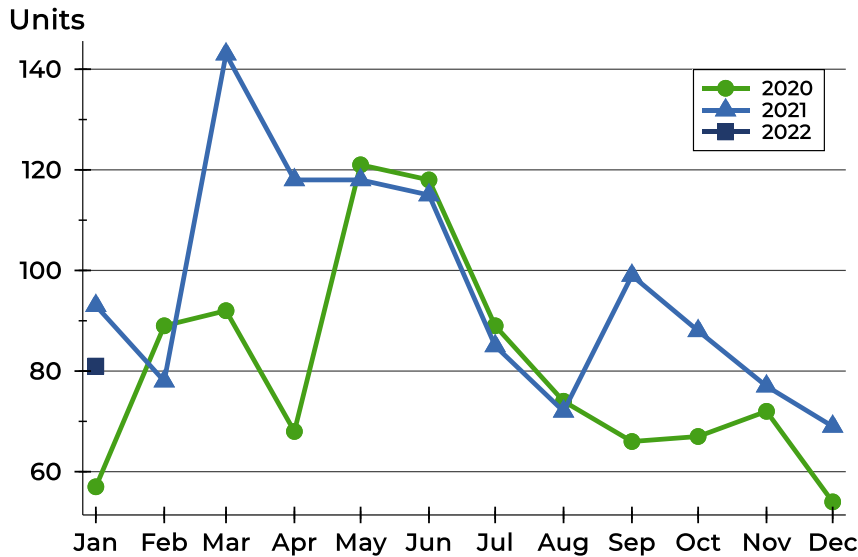
Units





Riley County Contracts Written Analysis

Contracts Written by Month



| Month | 2020 | 2021 | 2022 |
|------------------|------|------|-----------|
| January | 57 | 93 | 81 |
| February | 89 | 78 | |
| March | 92 | 143 | |
| April | 68 | 118 | |
| May | 121 | 118 | |
| June | 118 | 115 | |
| July | 89 | 85 | |
| August | 74 | 72 | |
| September | 66 | 99 | |
| October | 67 | 88 | |
| November | 72 | 77 | |
| December | 54 | 69 | |

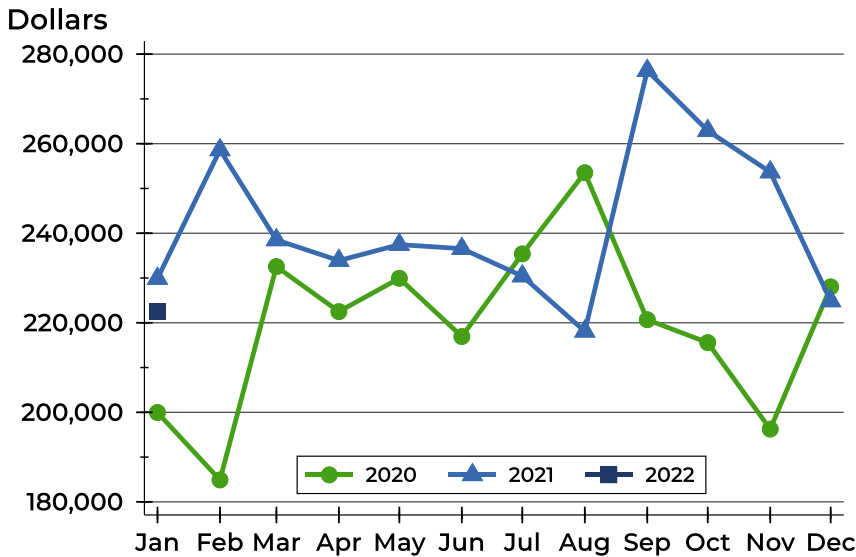
Contracts Written by Price Range

| Price Range | Contracts Written | | List Price | | Days on Market | | Price as % of Orig. | |
|---------------------|-------------------|---------|------------|---------|----------------|------|---------------------|--------|
| | Number | Percent | Average | Median | Avg. | Med. | Avg. | Med. |
| Below \$25,000 | 0 | 0.0% | N/A | N/A | N/A | N/A | N/A | N/A |
| \$25,000-\$49,999 | 0 | 0.0% | N/A | N/A | N/A | N/A | N/A | N/A |
| \$50,000-\$99,999 | 5 | 6.2% | 72,860 | 69,500 | 54 | 33 | 95.0% | 95.1% |
| \$100,000-\$124,999 | 4 | 4.9% | 117,250 | 117,500 | 50 | 25 | 97.5% | 98.7% |
| \$125,000-\$149,999 | 11 | 13.6% | 138,527 | 140,000 | 56 | 25 | 95.8% | 100.0% |
| \$150,000-\$174,999 | 7 | 8.6% | 162,429 | 165,000 | 52 | 48 | 99.2% | 100.0% |
| \$175,000-\$199,999 | 13 | 16.0% | 187,454 | 185,000 | 35 | 4 | 98.5% | 100.0% |
| \$200,000-\$249,999 | 17 | 21.0% | 225,876 | 234,000 | 23 | 4 | 99.7% | 100.0% |
| \$250,000-\$299,999 | 8 | 9.9% | 271,538 | 268,700 | 17 | 14 | 98.4% | 100.0% |
| \$300,000-\$399,999 | 12 | 14.8% | 337,183 | 331,500 | 121 | 13 | 98.6% | 100.0% |
| \$400,000-\$499,999 | 2 | 2.5% | 440,000 | 440,000 | 52 | 52 | 96.0% | 96.0% |
| \$500,000-\$749,999 | 2 | 2.5% | 577,500 | 577,500 | 14 | 14 | 100.0% | 100.0% |
| \$750,000-\$999,999 | 0 | 0.0% | N/A | N/A | N/A | N/A | N/A | N/A |
| \$1,000,000 and up | 0 | 0.0% | N/A | N/A | N/A | N/A | N/A | N/A |



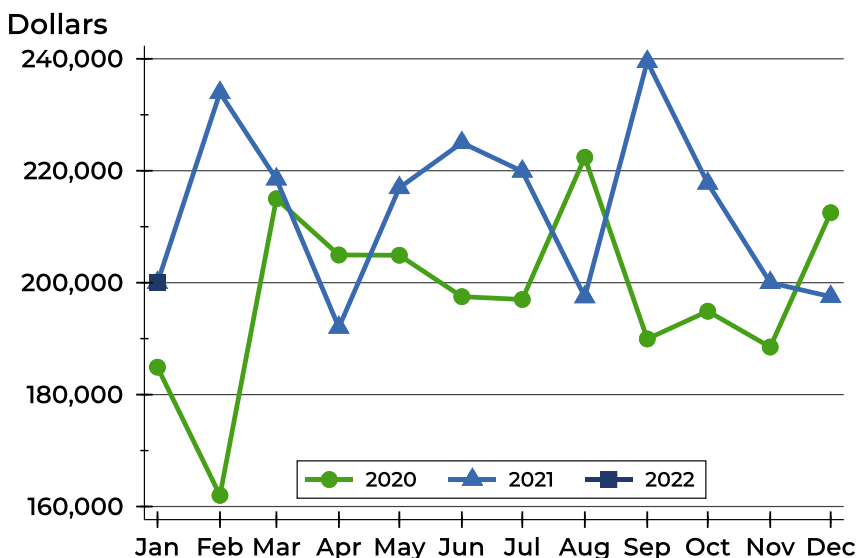
Riley County Contracts Written Analysis

Average Price



| Month | 2020 | 2021 | 2022 |
|----------------|---------|---------|----------------|
| January | 199,955 | 229,883 | 222,523 |
| February | 184,907 | 258,609 | |
| March | 232,539 | 238,500 | |
| April | 222,503 | 233,899 | |
| May | 229,933 | 237,460 | |
| June | 216,930 | 236,566 | |
| July | 235,391 | 230,434 | |
| August | 253,520 | 218,103 | |
| September | 220,682 | 276,326 | |
| October | 215,569 | 262,907 | |
| November | 196,256 | 253,665 | |
| December | 228,017 | 224,876 | |

Median Price

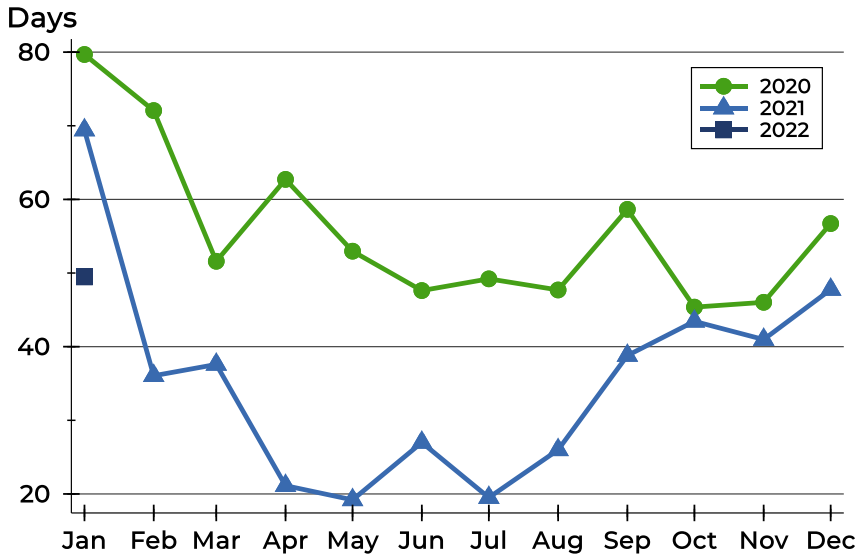


| Month | 2020 | 2021 | 2022 |
|----------------|---------|---------|----------------|
| January | 184,900 | 200,000 | 200,000 |
| February | 162,000 | 233,950 | |
| March | 215,000 | 218,500 | |
| April | 204,950 | 192,000 | |
| May | 204,900 | 216,950 | |
| June | 197,500 | 225,000 | |
| July | 197,000 | 219,900 | |
| August | 222,400 | 197,450 | |
| September | 189,950 | 239,500 | |
| October | 194,900 | 217,750 | |
| November | 188,500 | 200,000 | |
| December | 212,500 | 197,500 | |



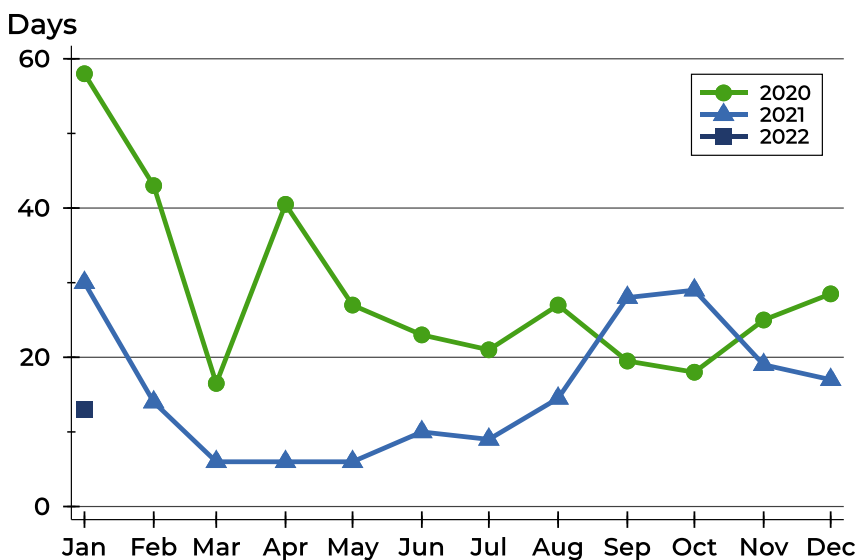
Riley County Contracts Written Analysis

Average DOM



| Month | 2020 | 2021 | 2022 |
|-----------|------|------|-----------|
| January | 80 | 69 | 49 |
| February | 72 | 36 | |
| March | 52 | 38 | |
| April | 63 | 21 | |
| May | 53 | 19 | |
| June | 48 | 27 | |
| July | 49 | 20 | |
| August | 48 | 26 | |
| September | 59 | 39 | |
| October | 45 | 43 | |
| November | 46 | 41 | |
| December | 57 | 48 | |

Median DOM



| Month | 2020 | 2021 | 2022 |
|-----------|------|------|-----------|
| January | 58 | 30 | 13 |
| February | 43 | 14 | |
| March | 17 | 6 | |
| April | 41 | 6 | |
| May | 27 | 6 | |
| June | 23 | 10 | |
| July | 21 | 9 | |
| August | 27 | 15 | |
| September | 20 | 28 | |
| October | 18 | 29 | |
| November | 25 | 19 | |
| December | 29 | 17 | |



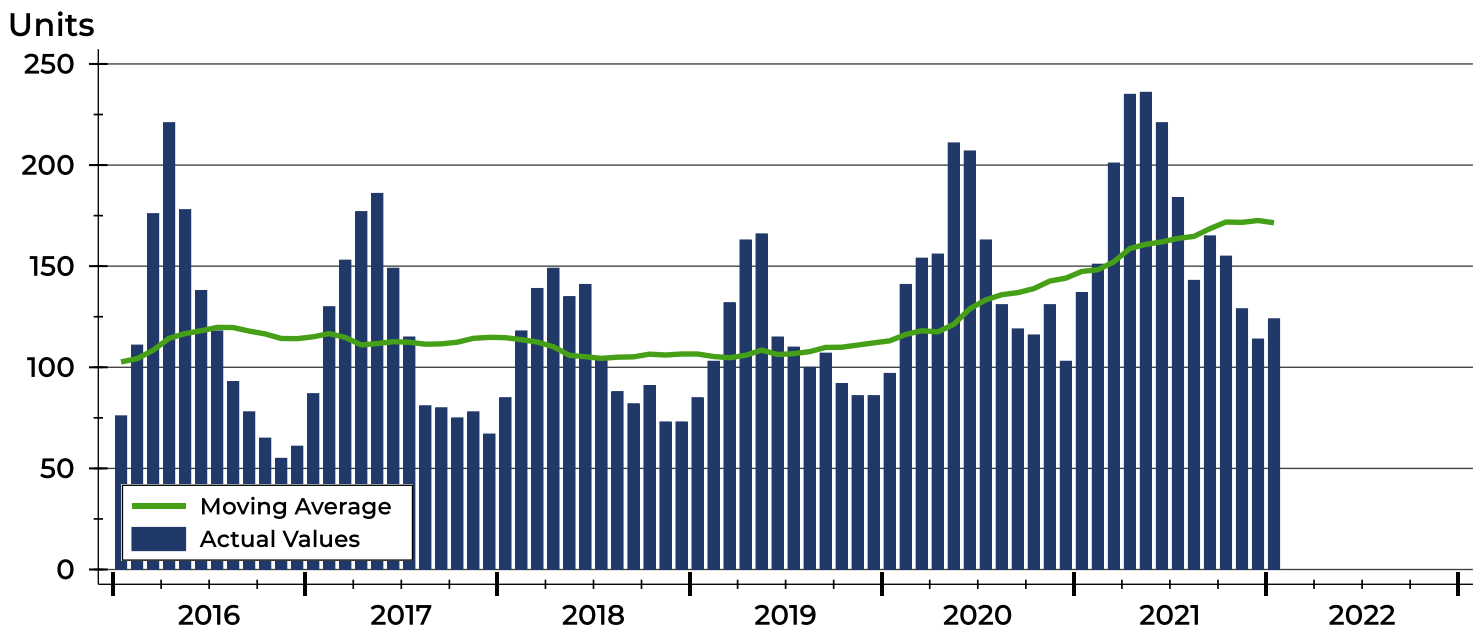
Riley County Pending Contracts Analysis

| Summary Statistics for Pending Contracts | | End of January | | |
|--|---------------------|----------------|---------|--------|
| | | 2022 | 2021 | Change |
| Pending Contracts | | 124 | 137 | -9.5% |
| Volume (1,000s) | | 30,157 | 31,480 | -4.2% |
| Average | List Price | 243,204 | 229,781 | 5.8% |
| | Days on Market | 50 | 64 | -21.9% |
| | Percent of Original | 98.7% | 98.3% | 0.4% |
| Median | List Price | 217,450 | 209,000 | 4.0% |
| | Days on Market | 16 | 29 | -44.8% |
| | Percent of Original | 100.0% | 100.0% | 0.0% |

A total of 124 listings in Riley County had contracts pending at the end of January, down from 137 contracts pending at the end of January 2021.

Pending contracts reflect listings with a contract in place at the end of the month. In contrast, contracts written measures the number of listings put under contract during the month.

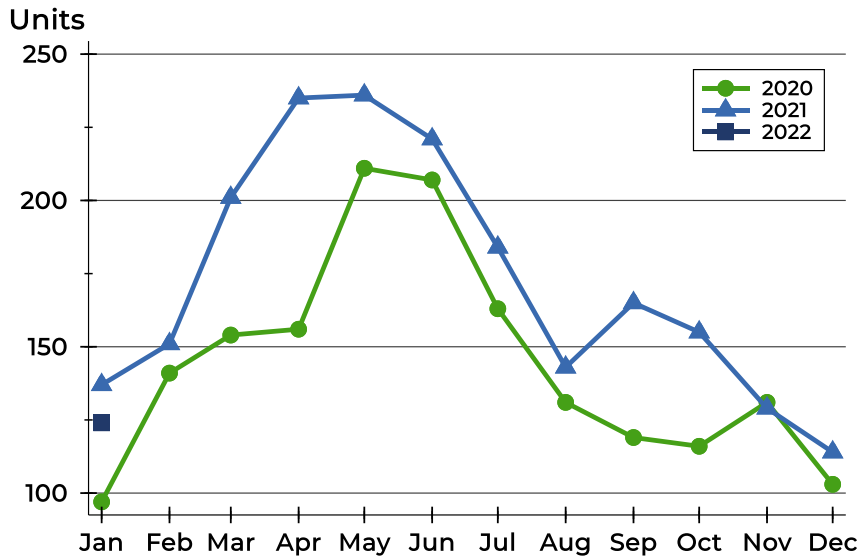
History of Pending Contracts





Riley County Pending Contracts Analysis

Pending Contracts by Month



| Month | 2020 | 2021 | 2022 |
|------------------|------|------|------------|
| January | 97 | 137 | 124 |
| February | 141 | 151 | |
| March | 154 | 201 | |
| April | 156 | 235 | |
| May | 211 | 236 | |
| June | 207 | 221 | |
| July | 163 | 184 | |
| August | 131 | 143 | |
| September | 119 | 165 | |
| October | 116 | 155 | |
| November | 131 | 129 | |
| December | 103 | 114 | |

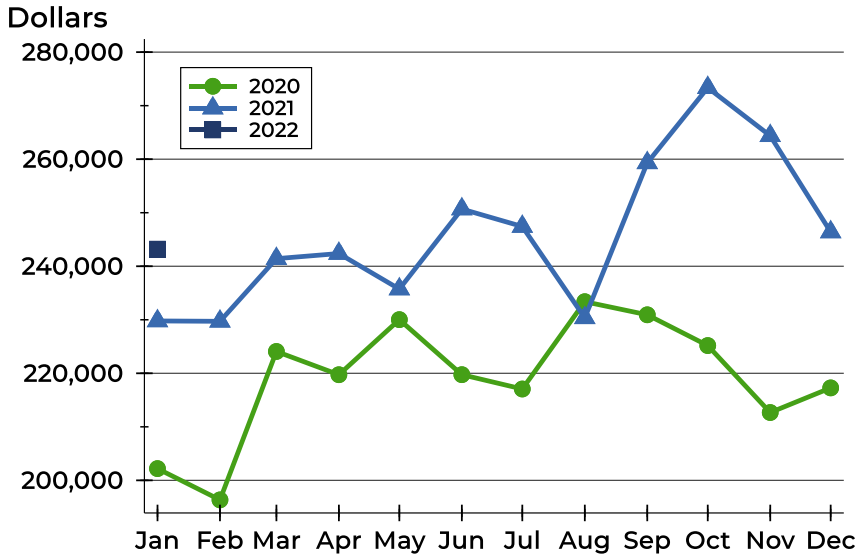
Pending Contracts by Price Range

| Price Range | Pending Contracts | | List Price | | Days on Market | | Price as % of Orig. | |
|---------------------|-------------------|---------|------------|---------|----------------|------|---------------------|--------|
| | Number | Percent | Average | Median | Avg. | Med. | Avg. | Med. |
| Below \$25,000 | 0 | 0.0% | N/A | N/A | N/A | N/A | N/A | N/A |
| \$25,000-\$49,999 | 0 | 0.0% | N/A | N/A | N/A | N/A | N/A | N/A |
| \$50,000-\$99,999 | 5 | 4.0% | 72,860 | 69,500 | 54 | 33 | 95.0% | 95.1% |
| \$100,000-\$124,999 | 7 | 5.6% | 112,757 | 110,000 | 118 | 41 | 96.8% | 100.0% |
| \$125,000-\$149,999 | 11 | 8.9% | 139,627 | 140,000 | 37 | 14 | 98.8% | 100.0% |
| \$150,000-\$174,999 | 13 | 10.5% | 163,462 | 165,000 | 47 | 31 | 98.4% | 100.0% |
| \$175,000-\$199,999 | 18 | 14.5% | 184,994 | 184,450 | 36 | 8 | 98.9% | 100.0% |
| \$200,000-\$249,999 | 26 | 21.0% | 227,747 | 232,000 | 27 | 6 | 99.6% | 100.0% |
| \$250,000-\$299,999 | 15 | 12.1% | 269,307 | 267,500 | 36 | 21 | 98.9% | 100.0% |
| \$300,000-\$399,999 | 18 | 14.5% | 334,639 | 326,950 | 98 | 18 | 98.2% | 100.0% |
| \$400,000-\$499,999 | 5 | 4.0% | 435,676 | 410,000 | 74 | 78 | 98.5% | 100.0% |
| \$500,000-\$749,999 | 5 | 4.0% | 575,000 | 550,000 | 20 | 12 | 100.0% | 100.0% |
| \$750,000-\$999,999 | 1 | 0.8% | 975,000 | 975,000 | 2 | 2 | 100.0% | 100.0% |
| \$1,000,000 and up | 0 | 0.0% | N/A | N/A | N/A | N/A | N/A | N/A |



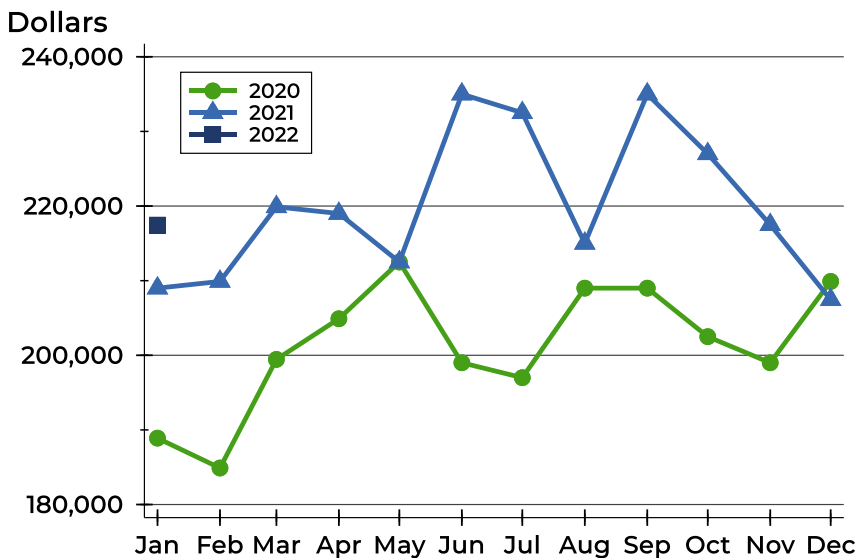
Riley County Pending Contracts Analysis

Average Price



| Month | 2020 | 2021 | 2022 |
|------------------|---------|---------|----------------|
| January | 202,199 | 229,781 | 243,204 |
| February | 196,352 | 229,712 | |
| March | 224,078 | 241,420 | |
| April | 219,735 | 242,377 | |
| May | 230,029 | 235,738 | |
| June | 219,742 | 250,688 | |
| July | 217,070 | 247,424 | |
| August | 233,377 | 230,364 | |
| September | 230,927 | 259,319 | |
| October | 225,181 | 273,363 | |
| November | 212,669 | 264,377 | |
| December | 217,276 | 246,398 | |

Median Price

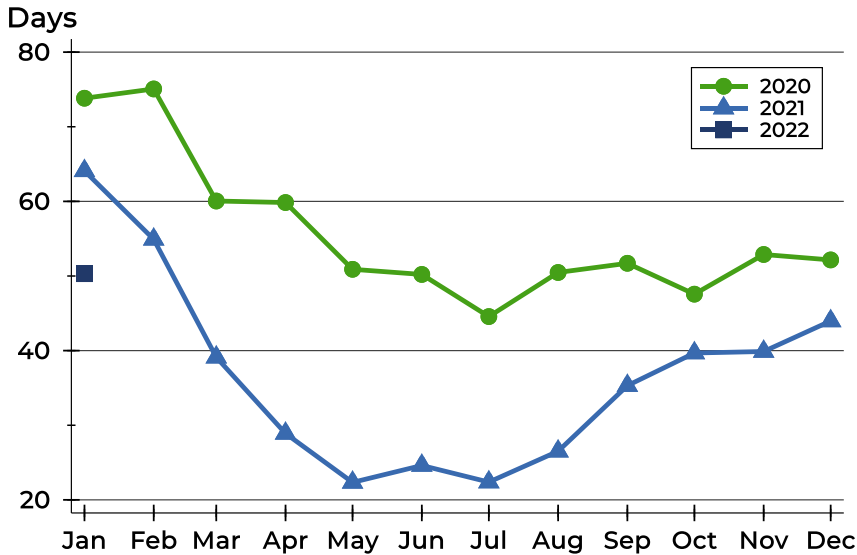


| Month | 2020 | 2021 | 2022 |
|------------------|---------|---------|----------------|
| January | 188,900 | 209,000 | 217,450 |
| February | 184,900 | 209,900 | |
| March | 199,450 | 219,900 | |
| April | 204,900 | 219,000 | |
| May | 212,500 | 212,500 | |
| June | 199,000 | 235,000 | |
| July | 197,000 | 232,500 | |
| August | 209,000 | 215,000 | |
| September | 209,000 | 235,000 | |
| October | 202,498 | 227,000 | |
| November | 199,000 | 217,500 | |
| December | 209,900 | 207,450 | |



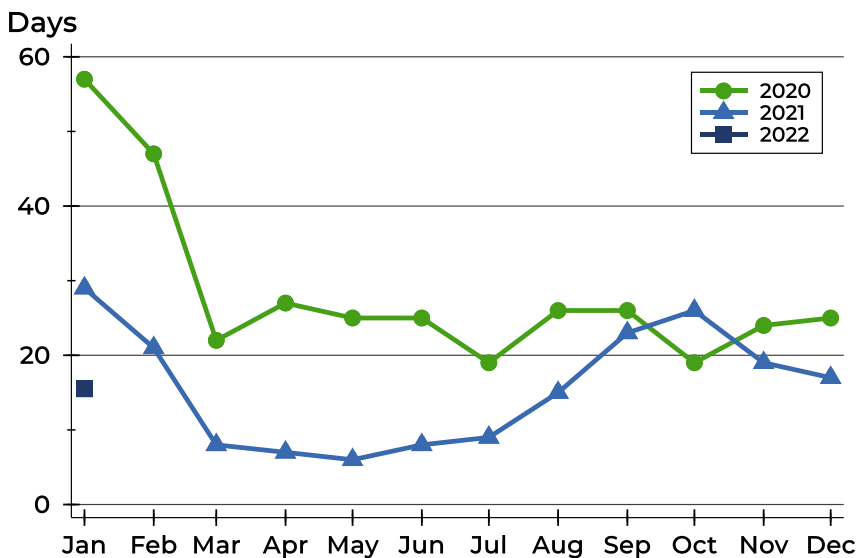
Riley County Pending Contracts Analysis

Average DOM



| Month | 2020 | 2021 | 2022 |
|-----------|------|------|-----------|
| January | 74 | 64 | 50 |
| February | 75 | 55 | |
| March | 60 | 39 | |
| April | 60 | 29 | |
| May | 51 | 22 | |
| June | 50 | 25 | |
| July | 45 | 22 | |
| August | 50 | 27 | |
| September | 52 | 35 | |
| October | 48 | 40 | |
| November | 53 | 40 | |
| December | 52 | 44 | |

Median DOM



| Month | 2020 | 2021 | 2022 |
|-----------|------|------|-----------|
| January | 57 | 29 | 16 |
| February | 47 | 21 | |
| March | 22 | 8 | |
| April | 27 | 7 | |
| May | 25 | 6 | |
| June | 25 | 8 | |
| July | 19 | 9 | |
| August | 26 | 15 | |
| September | 26 | 23 | |
| October | 19 | 26 | |
| November | 24 | 19 | |
| December | 25 | 17 | |