



**December
2022**

Flint Hills MLS Statistics



**FLINT HILLS
ASSOCIATION
OF REALTORS®**

Riley County Housing Report



Market Overview

Riley County Home Sales Fell in December

Total home sales in Riley County fell last month to 53 units, compared to 90 units in December 2021. Total sales volume was \$12.7 million, down from a year earlier.

The median sale price in December was \$245,000, up from \$217,500 a year earlier. Homes that sold in December were typically on the market for 11 days and sold for 100.0% of their list prices.

Riley County Active Listings Up at End of December

The total number of active listings in Riley County at the end of December was 124 units, up from 112 at the same point in 2021. This represents a 1.5 months' supply of homes available for sale. The median list price of homes on the market at the end of December was \$249,500.

During December, a total of 37 contracts were written down from 69 in December 2021. At the end of the month, there were 60 contracts still pending.

Report Contents

- Summary Statistics – Page 2
- Closed Listing Analysis – Page 3
- Active Listings Analysis – Page 7
- Months' Supply Analysis – Page 11
- New Listings Analysis – Page 12
- Contracts Written Analysis – Page 15
- Pending Contracts Analysis – Page 19

Contact Information

Margaret Pendleton, Association Executive
 Flint Hills Association of REALTORS®
 205 S. Seth Child Road
 Manhattan, KS 66502
 785-776-1203
ae@flinthillsrealtors.net
www.flinthillsrealtors.net



**December
2022**

Flint Hills MLS Statistics



**FLINT HILLS
ASSOCIATION
OF REALTORS®**

Riley County Summary Statistics

December MLS Statistics Three-year History		Current Month			Year-to-Date		
		2022	2021	2020	2022	2021	2020
Home Sales		53	90	82	971	1,147	952
Change from prior year		-41.1%	9.8%	57.7%	-15.3%	20.5%	21.0%
Active Listings		124	112	173	N/A	N/A	N/A
Change from prior year		10.7%	-35.3%	-37.3%			
Months' Supply		1.5	1.2	2.2	N/A	N/A	N/A
Change from prior year		25.0%	-45.5%	-47.6%			
New Listings		39	52	48	1,081	1,301	1,182
Change from prior year		-25.0%	8.3%	-14.3%	-16.9%	10.1%	-6.7%
Contracts Written		37	69	54	930	1,155	968
Change from prior year		-46.4%	27.8%	22.7%	-19.5%	19.3%	21.5%
Pending Contracts		60	114	103	N/A	N/A	N/A
Change from prior year		-47.4%	10.7%	19.8%			
Sales Volume (1,000s)		12,686	23,148	17,166	240,190	272,394	205,083
Change from prior year		-45.2%	34.8%	76.7%	-11.8%	32.8%	20.3%
Average	Sale Price	239,362	257,195	209,342	247,363	237,484	215,423
	Change from prior year	-6.9%	22.9%	12.1%	4.2%	10.2%	-0.5%
	List Price of Actives	311,834	263,144	261,905	N/A	N/A	N/A
	Change from prior year	18.5%	0.5%	9.0%			
	Days on Market	34	37	54	26	35	57
Change from prior year	-8.1%	-31.5%	-38.6%	-25.7%	-38.6%	-20.8%	
Percent of List	98.9%	99.3%	97.0%	99.4%	99.2%	97.9%	
Change from prior year	-0.4%	2.4%	-0.9%	0.2%	1.3%	0.4%	
Percent of Original	97.7%	97.2%	94.7%	98.4%	98.0%	95.9%	
Change from prior year	0.5%	2.6%	-1.5%	0.4%	2.2%	0.9%	
Median	Sale Price	245,000	217,500	189,950	226,000	215,000	194,000
	Change from prior year	12.6%	14.5%	13.7%	5.1%	10.8%	1.0%
	List Price of Actives	249,500	199,950	194,000	N/A	N/A	N/A
	Change from prior year	24.8%	3.1%	2.3%			
	Days on Market	11	16	24	8	12	27
Change from prior year	-31.3%	-33.3%	-44.2%	-33.3%	-55.6%	-35.7%	
Percent of List	100.0%	100.0%	97.9%	100.0%	100.0%	98.5%	
Change from prior year	0.0%	2.1%	-0.9%	0.0%	1.5%	0.3%	
Percent of Original	99.0%	99.1%	96.9%	100.0%	99.7%	97.5%	
Change from prior year	-0.1%	2.3%	-0.5%	0.3%	2.3%	0.6%	

Note: Year-to-date statistics cannot be calculated for Active Listings, Months' Supply and Pending Contracts.



Riley County Closed Listings Analysis

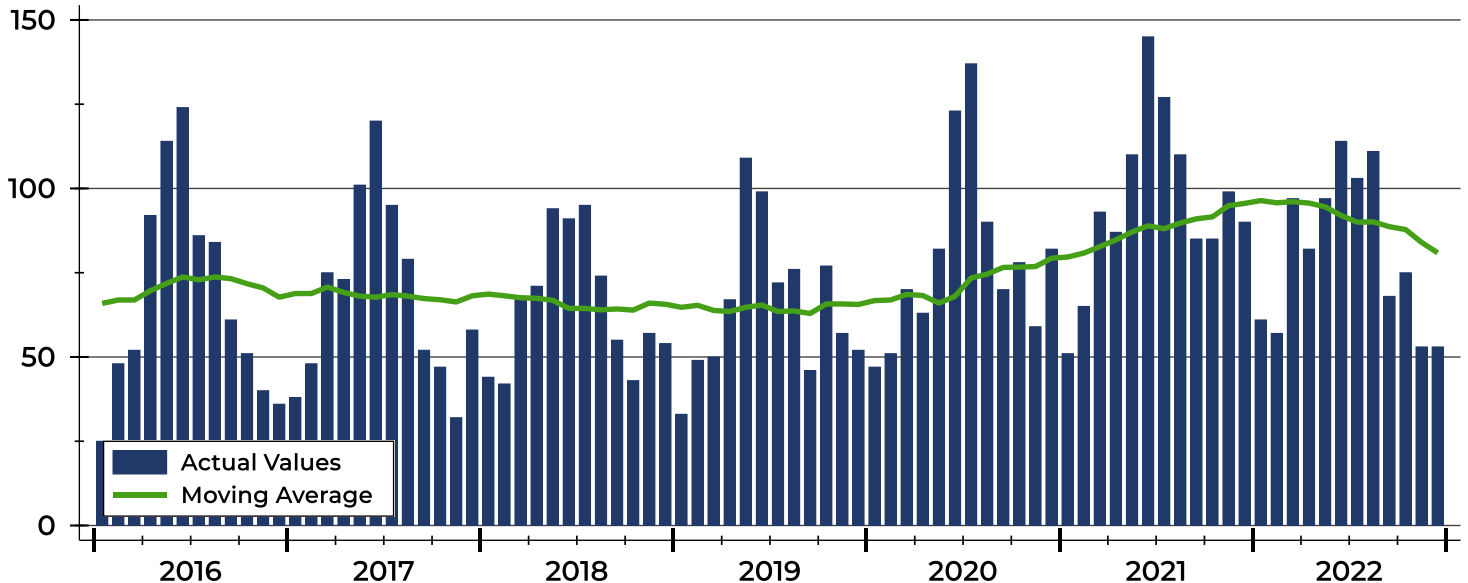
Summary Statistics for Closed Listings		December			Year-to-Date		
		2022	2021	Change	2022	2021	Change
Closed Listings		53	90	-41.1%	971	1,147	-15.3%
Volume (1,000s)		12,686	23,148	-45.2%	240,190	272,394	-11.8%
Months' Supply		1.5	1.2	25.0%	N/A	N/A	N/A
Average	Sale Price	239,362	257,195	-6.9%	247,363	237,484	4.2%
	Days on Market	34	37	-8.1%	26	35	-25.7%
	Percent of List	98.9%	99.3%	-0.4%	99.4%	99.2%	0.2%
	Percent of Original	97.7%	97.2%	0.5%	98.4%	98.0%	0.4%
Median	Sale Price	245,000	217,500	12.6%	226,000	215,000	5.1%
	Days on Market	11	16	-31.3%	8	12	-33.3%
	Percent of List	100.0%	100.0%	0.0%	100.0%	100.0%	0.0%
	Percent of Original	99.0%	99.1%	-0.1%	100.0%	99.7%	0.3%

A total of 53 homes sold in Riley County in December, down from 90 units in December 2021. Total sales volume fell to \$12.7 million compared to \$23.1 million in the previous year.

The median sales price in December was \$245,000, up 12.6% compared to the prior year. Median days on market was 11 days, down from 16 days in November, and down from 16 in December 2021.

History of Closed Listings

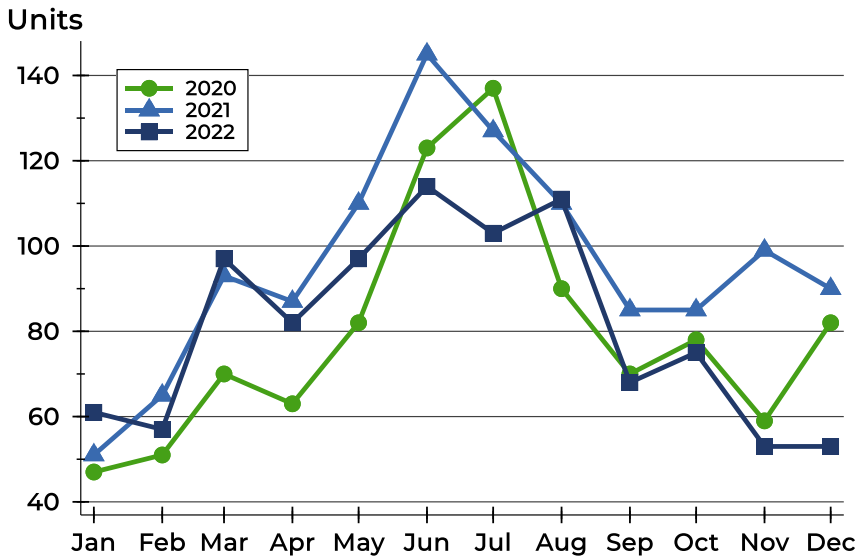
Units





Riley County Closed Listings Analysis

Closed Listings by Month



Month	2020	2021	2022
January	47	51	61
February	51	65	57
March	70	93	97
April	63	87	82
May	82	110	97
June	123	145	114
July	137	127	103
August	90	110	111
September	70	85	68
October	78	85	75
November	59	99	53
December	82	90	53

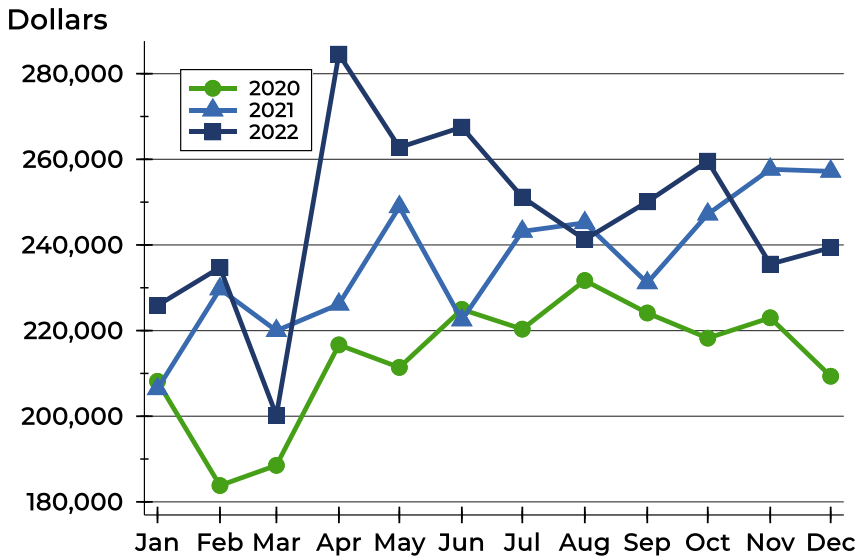
Closed Listings by Price Range

Price Range	Sales		Months' Supply	Sale Price		Days on Market		Price as % of List		Price as % of Orig.	
	Number	Percent		Average	Median	Avg.	Med.	Avg.	Med.	Avg.	Med.
Below \$25,000	0	0.0%	N/A	N/A	N/A	N/A	N/A	N/A	N/A	N/A	N/A
\$25,000-\$49,999	1	1.9%	2.0	45,000	45,000	7	7	107.1%	107.1%	107.1%	107.1%
\$50,000-\$99,999	1	1.9%	1.5	62,000	62,000	8	8	124.2%	124.2%	124.2%	124.2%
\$100,000-\$124,999	8	15.1%	2.0	111,520	112,580	80	51	91.8%	92.9%	89.7%	90.9%
\$125,000-\$149,999	0	0.0%	N/A	N/A	N/A	N/A	N/A	N/A	N/A	N/A	N/A
\$150,000-\$174,999	7	13.2%	1.0	159,786	160,000	47	7	99.2%	100.0%	96.7%	99.0%
\$175,000-\$199,999	3	5.7%	1.6	182,000	181,000	7	5	100.4%	100.6%	100.4%	100.6%
\$200,000-\$249,999	8	15.1%	1.1	222,188	222,000	7	6	101.0%	101.3%	100.8%	101.3%
\$250,000-\$299,999	8	15.1%	1.1	268,425	265,500	49	23	97.1%	96.9%	95.4%	95.9%
\$300,000-\$399,999	14	26.4%	1.4	332,496	327,000	22	14	99.7%	100.0%	98.8%	99.9%
\$400,000-\$499,999	2	3.8%	2.6	433,900	433,900	7	7	98.7%	98.7%	98.7%	98.7%
\$500,000-\$749,999	1	1.9%	5.3	574,900	574,900	4	4	100.0%	100.0%	100.0%	100.0%
\$750,000-\$999,999	0	0.0%	N/A	N/A	N/A	N/A	N/A	N/A	N/A	N/A	N/A
\$1,000,000 and up	0	0.0%	N/A	N/A	N/A	N/A	N/A	N/A	N/A	N/A	N/A



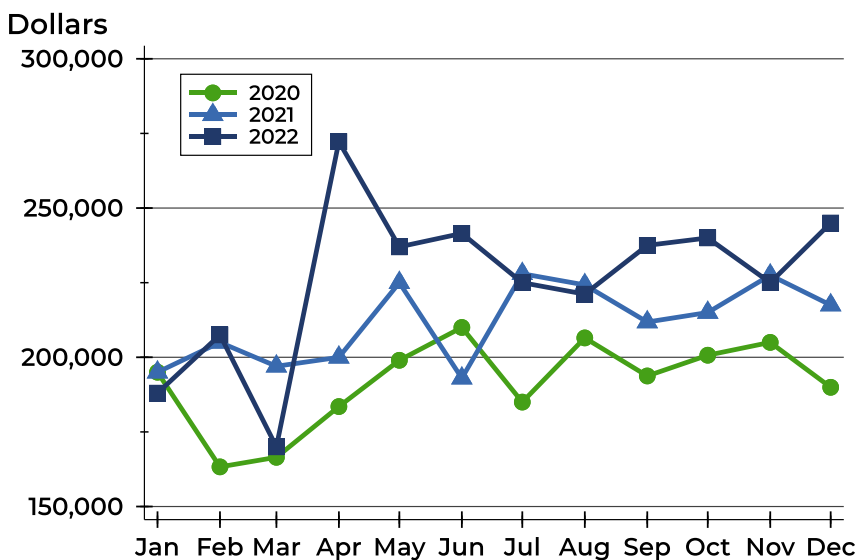
Riley County Closed Listings Analysis

Average Price



Month	2020	2021	2022
January	208,157	206,402	225,875
February	183,819	229,715	234,723
March	188,530	219,973	200,196
April	216,671	226,152	284,561
May	211,400	248,898	262,771
June	224,955	222,470	267,511
July	220,343	243,175	251,180
August	231,701	245,172	241,275
September	224,114	231,140	250,074
October	218,236	247,194	259,562
November	222,989	257,661	235,522
December	209,342	257,195	239,362

Median Price

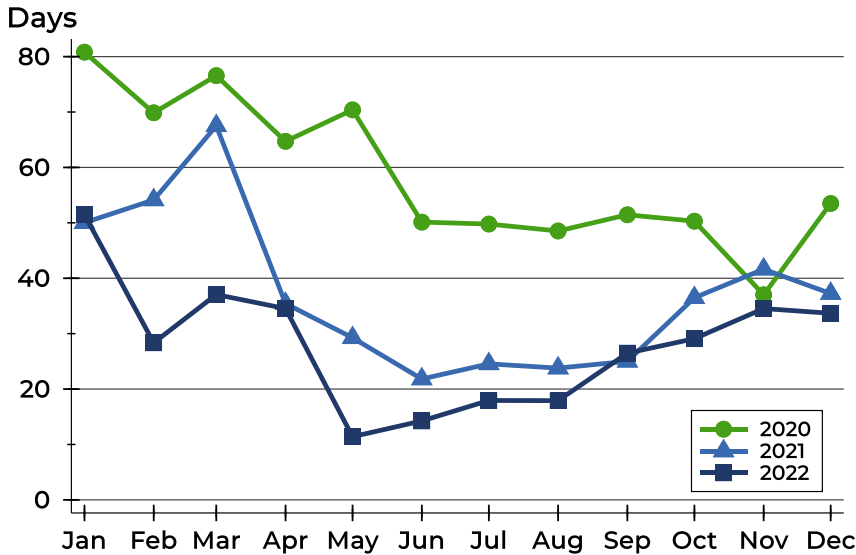


Month	2020	2021	2022
January	195,000	195,000	188,000
February	163,295	205,000	207,500
March	166,500	197,000	170,000
April	183,500	200,000	272,250
May	199,000	225,000	237,000
June	210,000	193,000	241,500
July	185,000	228,000	225,000
August	206,500	224,250	221,159
September	193,750	211,819	237,500
October	200,700	215,000	240,000
November	205,000	227,500	225,000
December	189,950	217,500	245,000



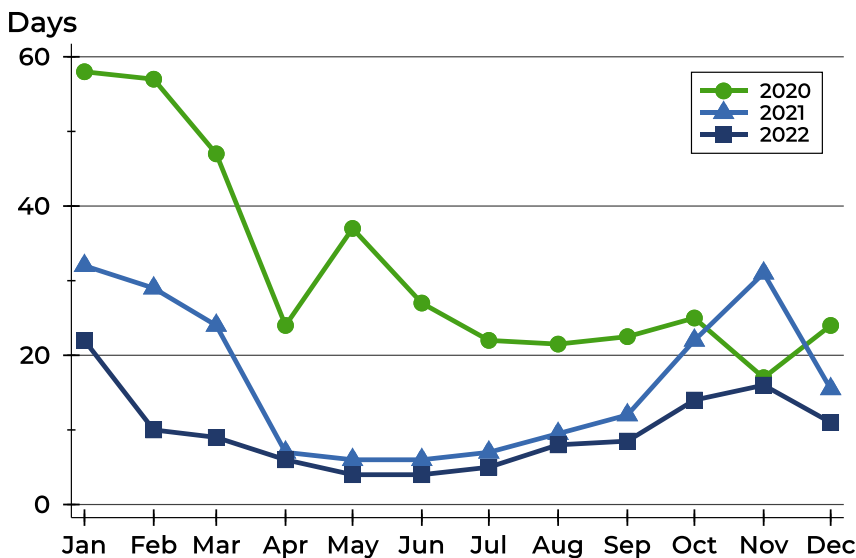
Riley County Closed Listings Analysis

Average DOM



Month	2020	2021	2022
January	81	50	51
February	70	54	28
March	77	68	37
April	65	35	35
May	70	29	11
June	50	22	14
July	50	25	18
August	49	24	18
September	51	25	26
October	50	36	29
November	37	42	35
December	54	37	34

Median DOM



Month	2020	2021	2022
January	58	32	22
February	57	29	10
March	47	24	9
April	24	7	6
May	37	6	4
June	27	6	4
July	22	7	5
August	22	10	8
September	23	12	9
October	25	22	14
November	17	31	16
December	24	16	11



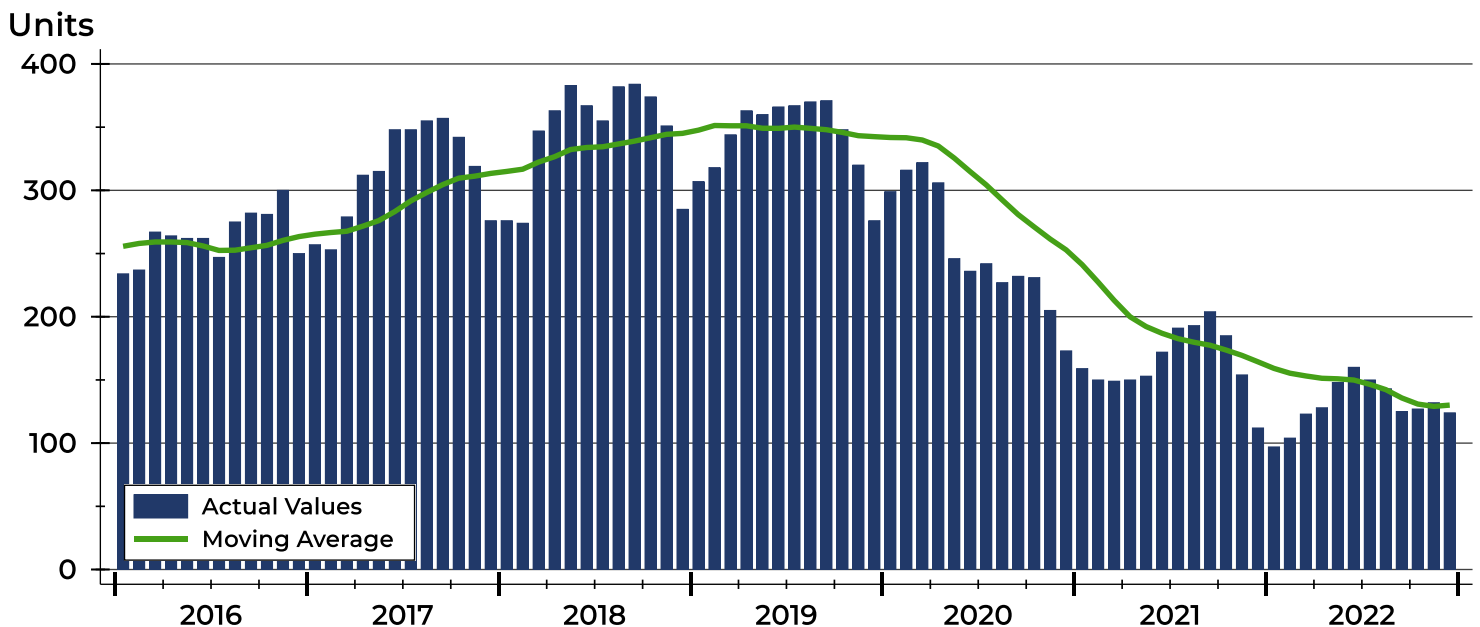
Riley County Active Listings Analysis

Summary Statistics for Active Listings		2022	2021	Change
Active Listings		124	112	10.7%
Volume (1,000s)		38,667	29,472	31.2%
Months' Supply		1.5	1.2	25.0%
Average	List Price	311,834	263,144	18.5%
	Days on Market	79	93	-15.1%
	Percent of Original	97.8%	97.7%	0.1%
Median	List Price	249,500	199,950	24.8%
	Days on Market	59	62	-4.8%
	Percent of Original	100.0%	100.0%	0.0%

A total of 124 homes were available for sale in Riley County at the end of December. This represents a 1.5 months' supply of active listings.

The median list price of homes on the market at the end of December was \$249,500, up 24.8% from 2021. The typical time on market for active listings was 59 days, down from 62 days a year earlier.

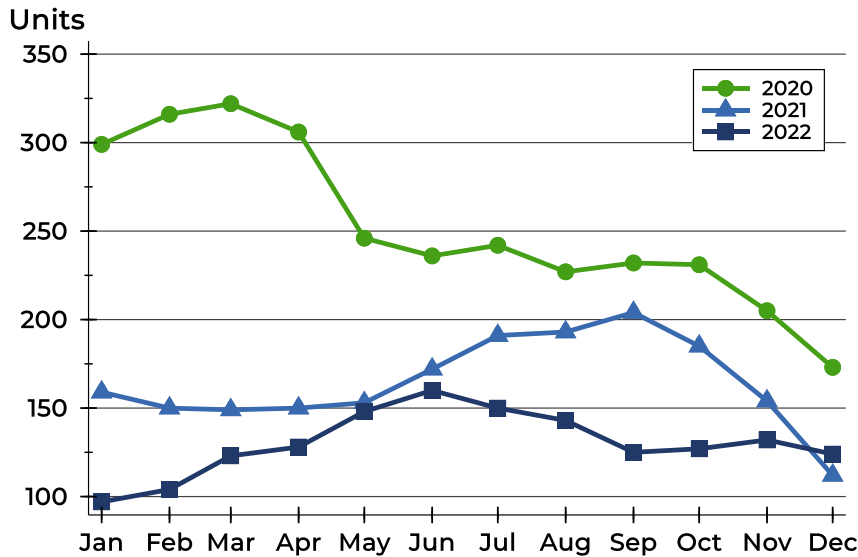
History of Active Listings





Riley County Active Listings Analysis

Active Listings by Month



Month	2020	2021	2022
January	299	159	97
February	316	150	104
March	322	149	123
April	306	150	128
May	246	153	148
June	236	172	160
July	242	191	150
August	227	193	143
September	232	204	125
October	231	185	127
November	205	154	132
December	173	112	124

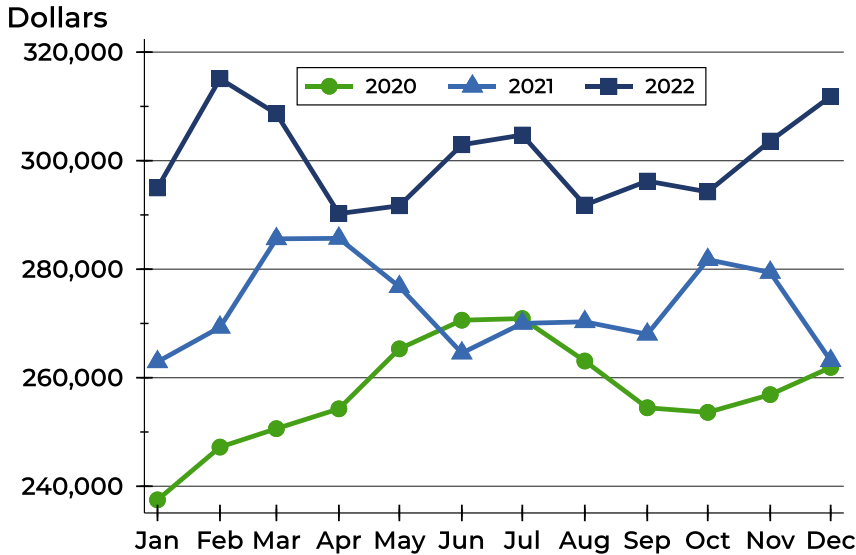
Active Listings by Price Range

Price Range	Active Listings		Months' Supply	List Price		Days on Market		Price as % of Orig.	
	Number	Percent		Average	Median	Avg.	Med.	Avg.	Med.
Below \$25,000	0	0.0%	N/A	N/A	N/A	N/A	N/A	N/A	N/A
\$25,000-\$49,999	1	0.8%	2.0	39,000	39,000	60	60	88.6%	88.6%
\$50,000-\$99,999	4	3.2%	1.5	92,200	94,500	71	41	96.7%	100.0%
\$100,000-\$124,999	9	7.3%	2.0	114,411	115,000	26	10	95.6%	100.0%
\$125,000-\$149,999	8	6.5%	N/A	139,925	140,800	68	67	99.4%	100.0%
\$150,000-\$174,999	10	8.1%	1.0	165,470	168,000	43	23	99.5%	100.0%
\$175,000-\$199,999	14	11.3%	1.6	187,043	186,650	89	49	98.6%	100.0%
\$200,000-\$249,999	16	12.9%	1.1	230,306	231,000	68	55	95.5%	100.0%
\$250,000-\$299,999	14	11.3%	1.1	273,529	272,500	51	53	98.6%	100.0%
\$300,000-\$399,999	20	16.1%	1.4	351,975	358,950	103	84	96.9%	98.0%
\$400,000-\$499,999	11	8.9%	2.6	453,621	459,000	143	114	99.8%	100.0%
\$500,000-\$749,999	12	9.7%	5.3	611,796	617,500	51	26	100.1%	100.0%
\$750,000-\$999,999	4	3.2%	N/A	938,000	963,500	157	106	94.5%	99.0%
\$1,000,000 and up	1	0.8%	N/A	1,200,000	1,200,000	295	295	100.0%	100.0%



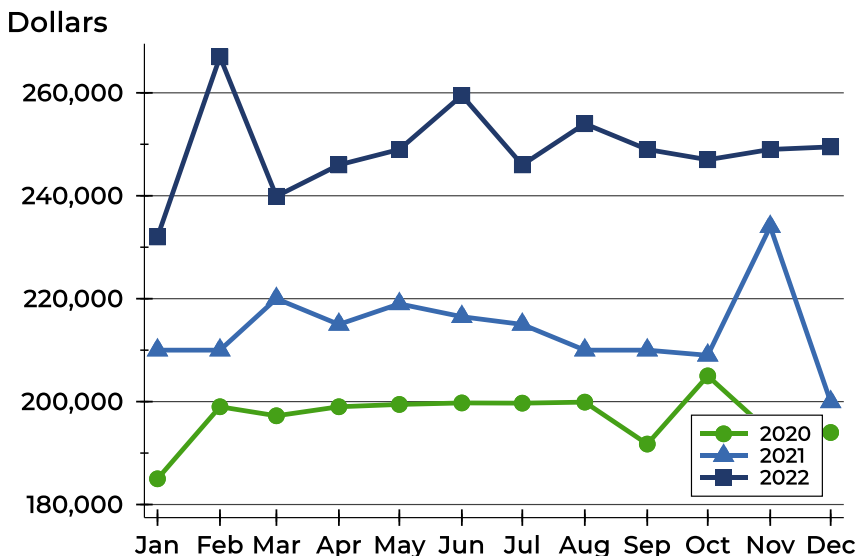
Riley County Active Listings Analysis

Average Price



Month	2020	2021	2022
January	237,490	262,929	294,980
February	247,217	269,299	315,098
March	250,613	285,597	308,649
April	254,270	285,687	290,244
May	265,322	276,770	291,693
June	270,600	264,539	302,934
July	270,904	270,021	304,729
August	263,083	270,304	291,827
September	254,462	268,017	296,245
October	253,619	281,756	294,245
November	256,881	279,402	303,615
December	261,905	263,144	311,834

Median Price

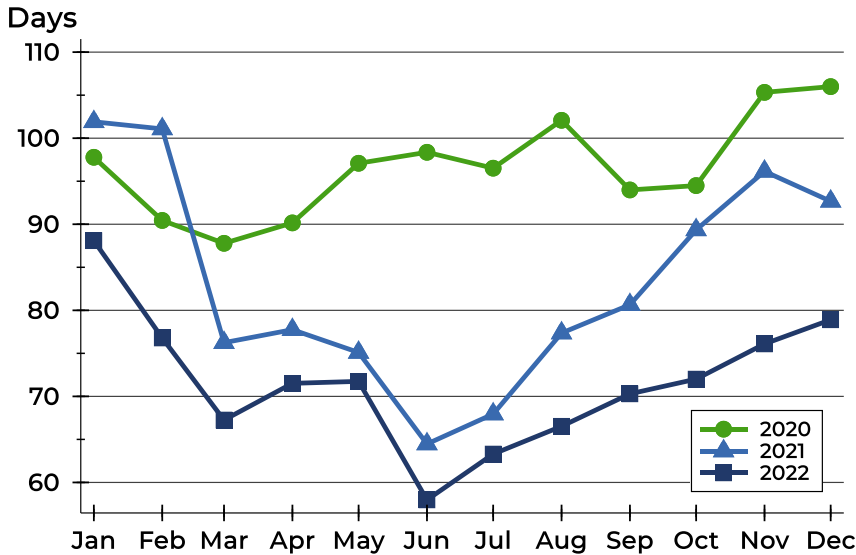


Month	2020	2021	2022
January	185,000	210,000	232,000
February	199,000	210,000	267,000
March	197,245	220,000	239,900
April	199,000	215,000	246,000
May	199,450	219,000	249,000
June	199,748	216,500	259,500
July	199,700	215,000	246,000
August	199,900	210,000	254,000
September	191,750	210,000	249,000
October	205,000	209,000	247,000
November	194,000	234,000	249,000
December	194,000	199,950	249,500



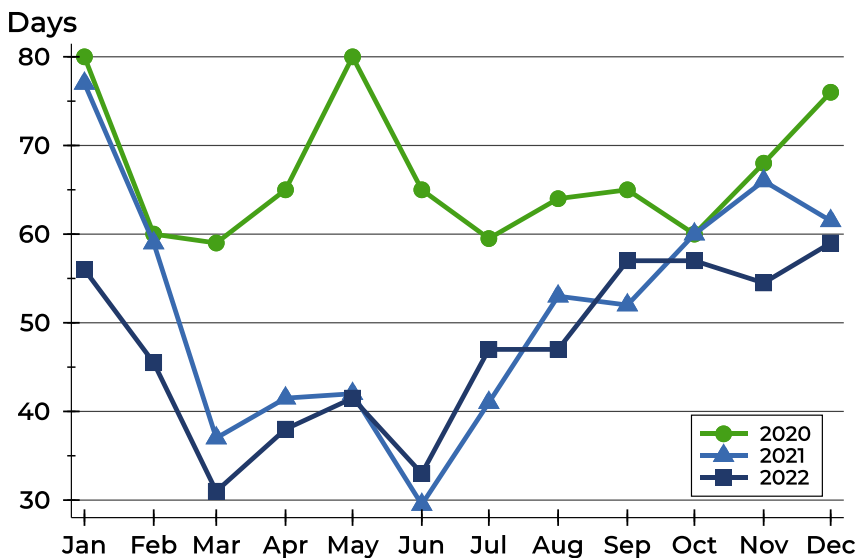
Riley County Active Listings Analysis

Average DOM



Month	2020	2021	2022
January	98	102	88
February	90	101	77
March	88	76	67
April	90	78	72
May	97	75	72
June	98	64	58
July	97	68	63
August	102	77	67
September	94	81	70
October	94	89	72
November	105	96	76
December	106	93	79

Median DOM

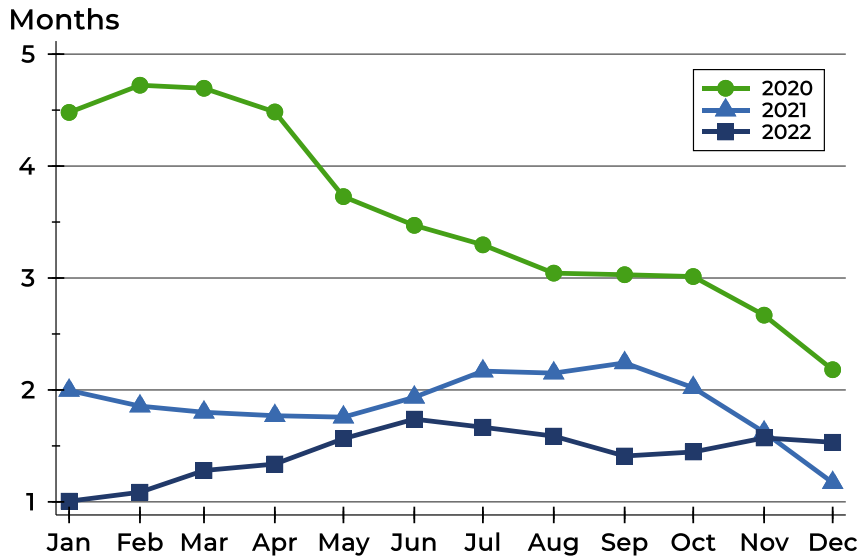


Month	2020	2021	2022
January	80	77	56
February	60	59	46
March	59	37	31
April	65	42	38
May	80	42	42
June	65	30	33
July	60	41	47
August	64	53	47
September	65	52	57
October	60	60	57
November	68	66	55
December	76	62	59



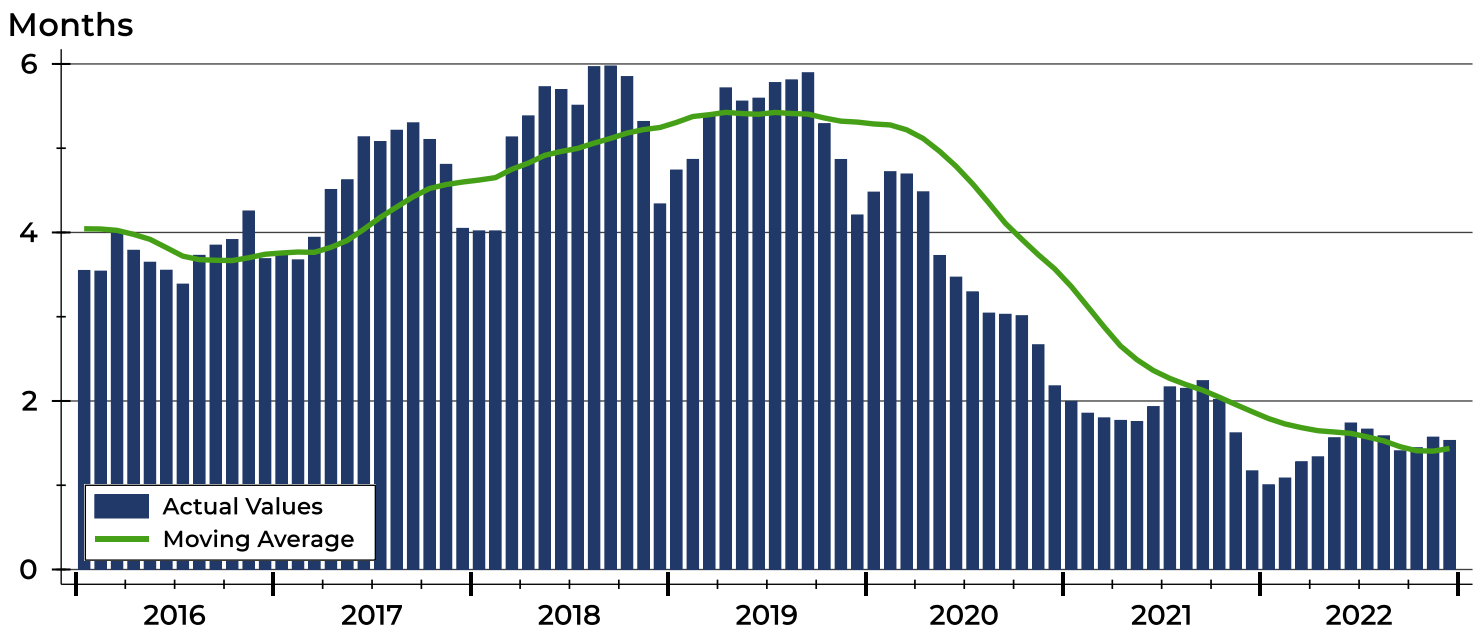
Riley County Months' Supply Analysis

Months' Supply by Month



Month	2020	2021	2022
January	4.5	2.0	1.0
February	4.7	1.9	1.1
March	4.7	1.8	1.3
April	4.5	1.8	1.3
May	3.7	1.8	1.6
June	3.5	1.9	1.7
July	3.3	2.2	1.7
August	3.0	2.2	1.6
September	3.0	2.2	1.4
October	3.0	2.0	1.4
November	2.7	1.6	1.6
December	2.2	1.2	1.5

History of Month's Supply





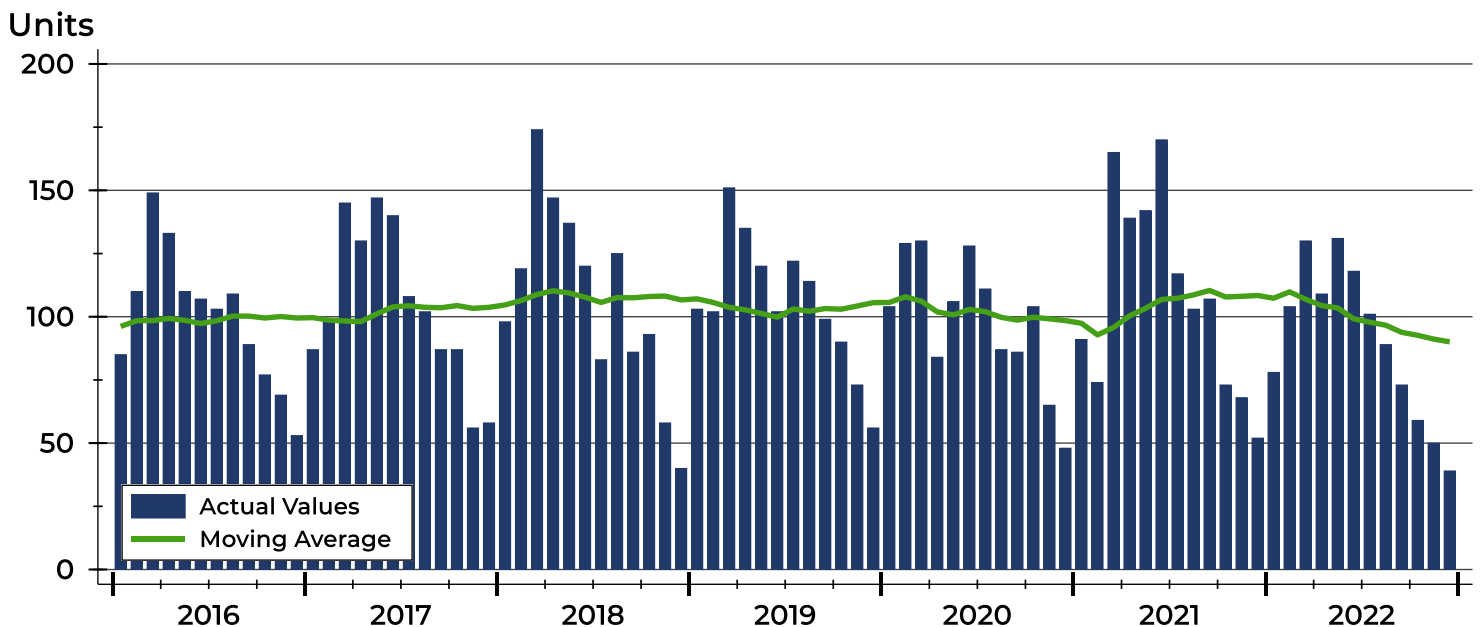
Riley County New Listings Analysis

Summary Statistics for New Listings		2022	December 2021	Change
Current Month	New Listings	39	52	-25.0%
	Volume (1,000s)	10,668	11,086	-3.8%
	Average List Price	273,544	213,190	28.3%
	Median List Price	229,900	180,000	27.7%
Year-to-Date	New Listings	1,081	1,301	-16.9%
	Volume (1,000s)	280,869	316,858	-11.4%
	Average List Price	259,823	243,549	6.7%
	Median List Price	230,000	215,000	7.0%

A total of 39 new listings were added in Riley County during December, down 25.0% from the same month in 2021. Year-to-date Riley County has seen 1,081 new listings.

The median list price of these homes was \$229,900 up from \$180,000 in 2021.

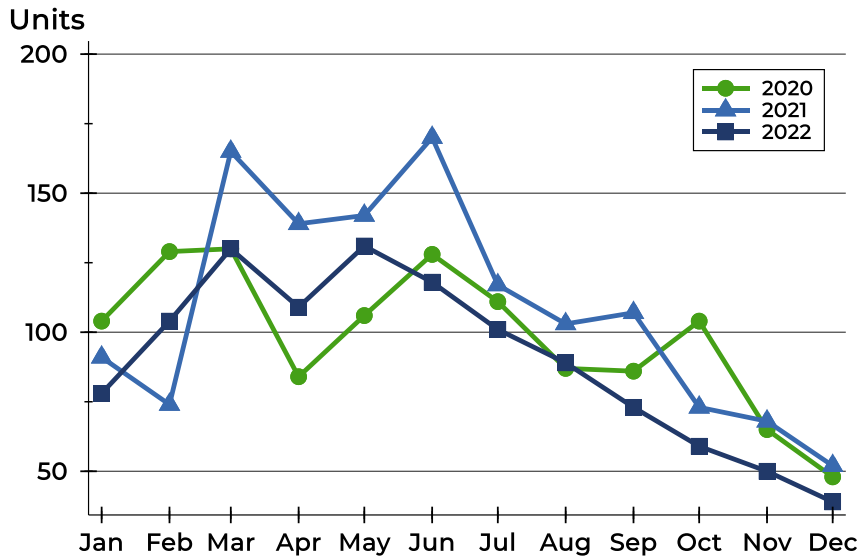
History of New Listings





Riley County New Listings Analysis

New Listings by Month



Month	2020	2021	2022
January	104	91	78
February	129	74	104
March	130	165	130
April	84	139	109
May	106	142	131
June	128	170	118
July	111	117	101
August	87	103	89
September	86	107	73
October	104	73	59
November	65	68	50
December	48	52	39

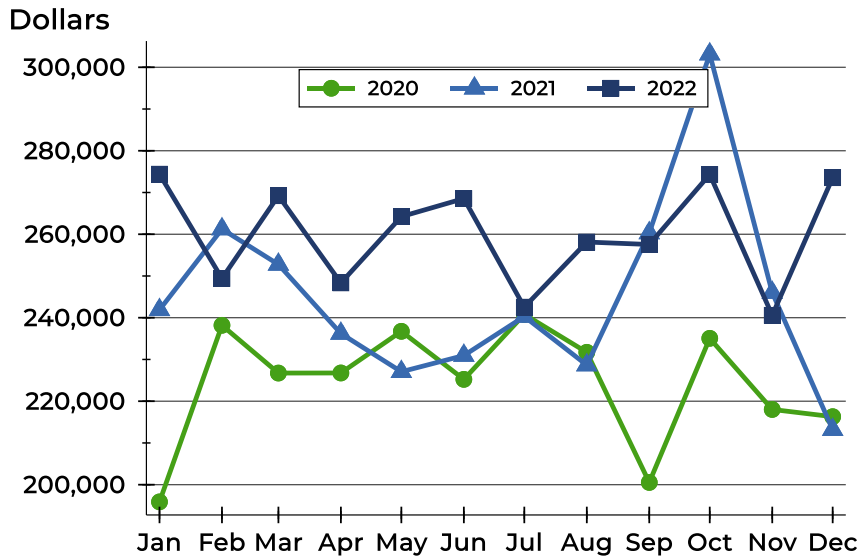
New Listings by Price Range

Price Range	New Listings		List Price		Days on Market		Price as % of Orig.	
	Number	Percent	Average	Median	Avg.	Med.	Avg.	Med.
Below \$25,000	0	0.0%	N/A	N/A	N/A	N/A	N/A	N/A
\$25,000-\$49,999	0	0.0%	N/A	N/A	N/A	N/A	N/A	N/A
\$50,000-\$99,999	1	2.6%	79,900	79,900	19	19	100.0%	100.0%
\$100,000-\$124,999	4	10.3%	112,975	113,500	13	9	99.3%	100.0%
\$125,000-\$149,999	2	5.1%	133,950	133,950	21	21	100.0%	100.0%
\$150,000-\$174,999	5	12.8%	161,980	157,000	23	25	99.8%	100.0%
\$175,000-\$199,999	5	12.8%	186,480	185,000	16	10	100.1%	100.0%
\$200,000-\$249,999	6	15.4%	229,650	229,950	18	21	100.0%	100.0%
\$250,000-\$299,999	4	10.3%	257,250	255,000	20	21	100.0%	100.0%
\$300,000-\$399,999	6	15.4%	338,283	332,450	14	18	100.0%	100.0%
\$400,000-\$499,999	0	0.0%	N/A	N/A	N/A	N/A	N/A	N/A
\$500,000-\$749,999	6	15.4%	614,933	592,450	21	21	100.0%	100.0%
\$750,000-\$999,999	0	0.0%	N/A	N/A	N/A	N/A	N/A	N/A
\$1,000,000 and up	0	0.0%	N/A	N/A	N/A	N/A	N/A	N/A



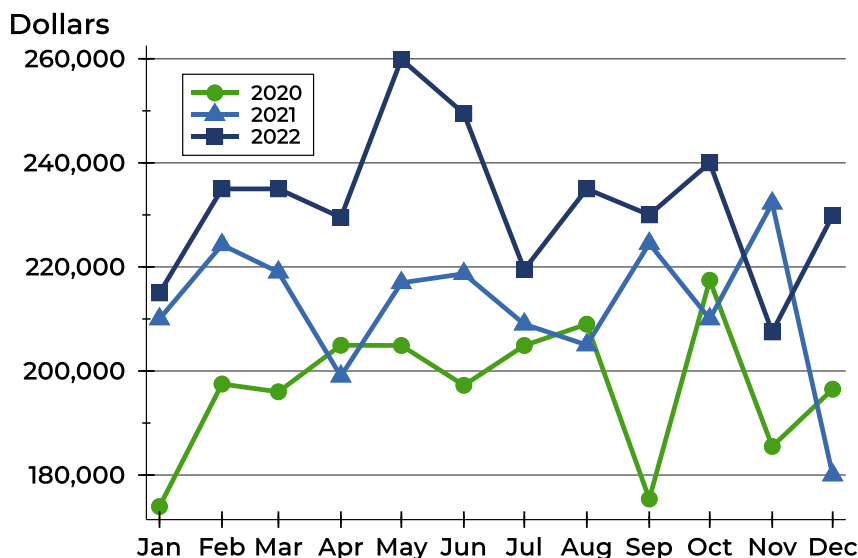
Riley County New Listings Analysis

Average Price



Month	2020	2021	2022
January	195,887	241,888	274,397
February	238,191	261,254	249,413
March	226,747	252,772	269,234
April	226,764	236,225	248,339
May	236,745	227,067	264,226
June	225,242	230,952	268,554
July	240,816	240,298	242,536
August	231,720	228,658	258,135
September	200,543	260,308	257,548
October	235,066	303,145	274,330
November	218,030	246,026	240,589
December	216,300	213,190	273,544

Median Price



Month	2020	2021	2022
January	173,950	210,000	215,000
February	197,500	224,250	235,000
March	196,000	219,000	235,000
April	204,948	199,000	229,500
May	204,900	216,950	259,900
June	197,250	218,700	249,500
July	204,900	209,000	219,500
August	209,000	205,000	235,000
September	175,400	224,500	230,000
October	217,450	209,999	240,000
November	185,500	232,250	207,500
December	196,500	180,000	229,900



Riley County Contracts Written Analysis

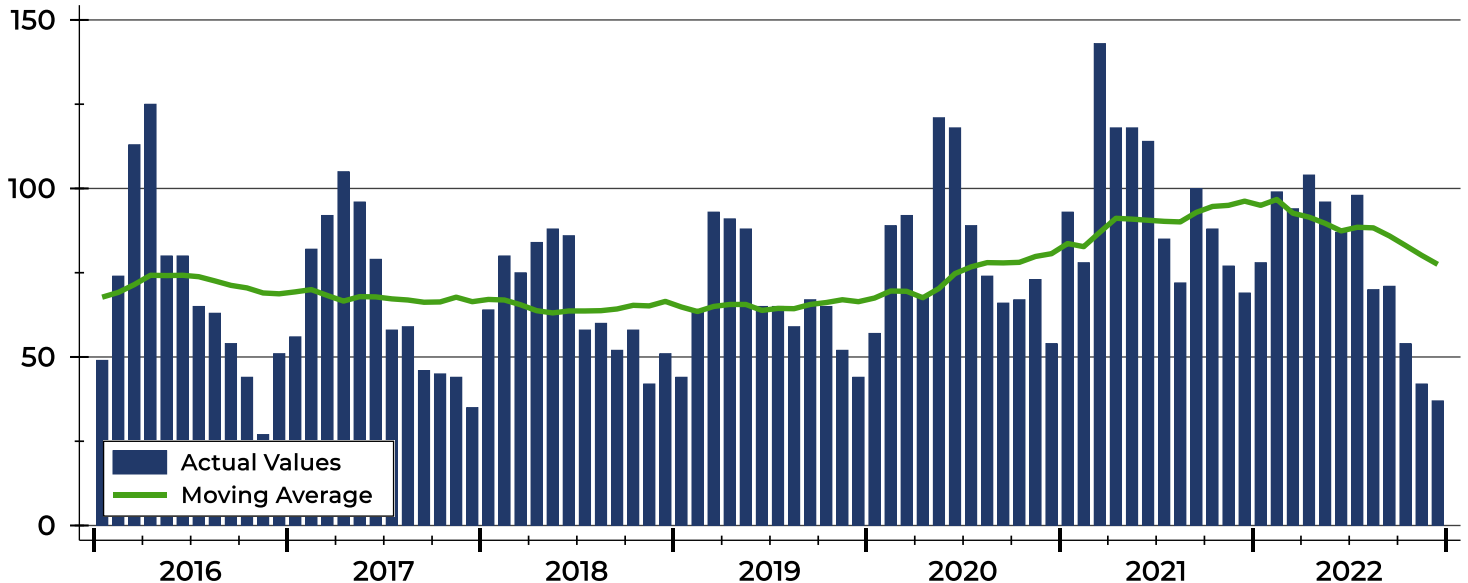
Summary Statistics for Contracts Written		December			Year-to-Date		
		2022	2021	Change	2022	2021	Change
Contracts Written		37	69	-46.4%	930	1,155	-19.5%
Volume (1,000s)		8,611	15,607	-44.8%	230,886	279,381	-17.4%
Average	Sale Price	232,724	226,182	2.9%	248,264	241,888	2.6%
	Days on Market	50	47	6.4%	25	35	-28.6%
	Percent of Original	97.3%	95.7%	1.7%	98.5%	98.1%	0.4%
Median	Sale Price	210,000	200,000	5.0%	225,000	215,000	4.7%
	Days on Market	27	17	58.8%	7	11	-36.4%
	Percent of Original	100.0%	98.6%	1.4%	100.0%	100.0%	0.0%

A total of 37 contracts for sale were written in Riley County during the month of December, down from 69 in 2021. The median list price of these homes was \$210,000, up from \$200,000 the prior year.

Half of the homes that went under contract in December were on the market less than 27 days, compared to 17 days in December 2021.

History of Contracts Written

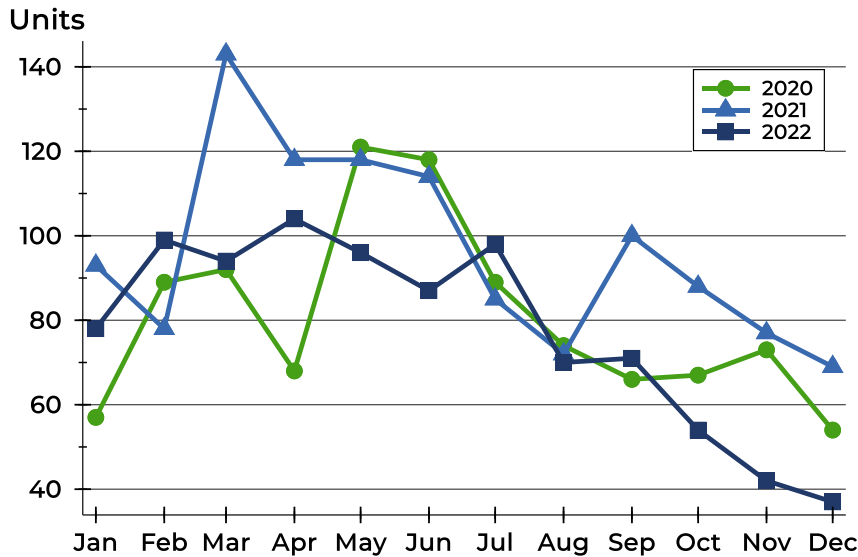
Units





Riley County Contracts Written Analysis

Contracts Written by Month



Month	2020	2021	2022
January	57	93	78
February	89	78	99
March	92	143	94
April	68	118	104
May	121	118	96
June	118	114	87
July	89	85	98
August	74	72	70
September	66	100	71
October	67	88	54
November	73	77	42
December	54	69	37

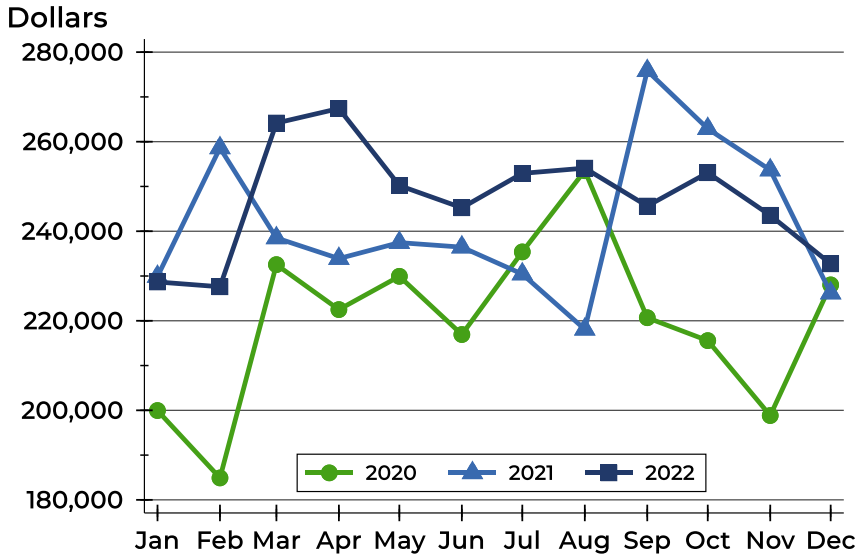
Contracts Written by Price Range

Price Range	Contracts Written		List Price		Days on Market		Price as % of Orig.	
	Number	Percent	Average	Median	Avg.	Med.	Avg.	Med.
Below \$25,000	0	0.0%	N/A	N/A	N/A	N/A	N/A	N/A
\$25,000-\$49,999	0	0.0%	N/A	N/A	N/A	N/A	N/A	N/A
\$50,000-\$99,999	0	0.0%	N/A	N/A	N/A	N/A	N/A	N/A
\$100,000-\$124,999	4	10.8%	112,225	112,450	67	59	96.8%	96.3%
\$125,000-\$149,999	3	8.1%	130,000	125,000	105	27	89.6%	88.0%
\$150,000-\$174,999	4	10.8%	158,500	157,000	22	18	99.0%	99.5%
\$175,000-\$199,999	7	18.9%	189,214	191,500	39	15	98.8%	100.0%
\$200,000-\$249,999	6	16.2%	222,483	219,450	65	39	98.3%	100.0%
\$250,000-\$299,999	4	10.8%	261,225	250,000	54	23	98.8%	100.0%
\$300,000-\$399,999	7	18.9%	335,671	325,000	29	21	98.2%	98.3%
\$400,000-\$499,999	0	0.0%	N/A	N/A	N/A	N/A	N/A	N/A
\$500,000-\$749,999	2	5.4%	541,950	541,950	62	62	92.4%	92.4%
\$750,000-\$999,999	0	0.0%	N/A	N/A	N/A	N/A	N/A	N/A
\$1,000,000 and up	0	0.0%	N/A	N/A	N/A	N/A	N/A	N/A



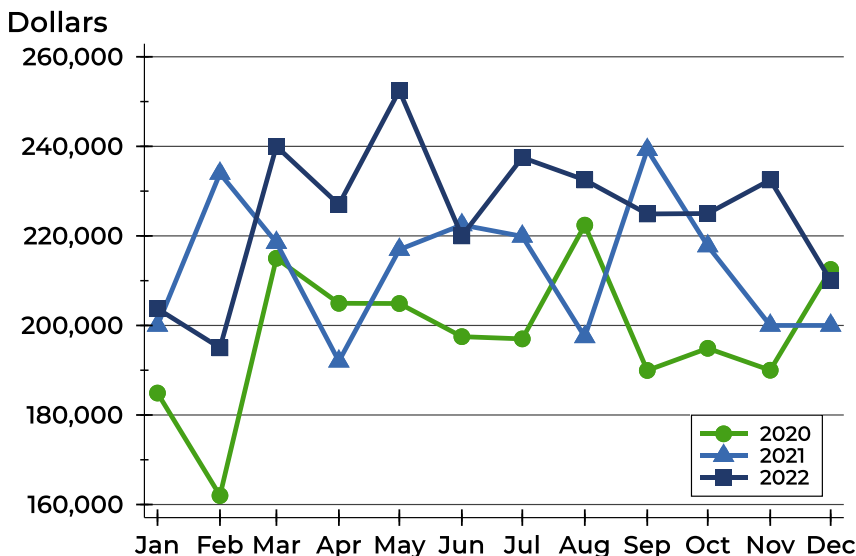
Riley County Contracts Written Analysis

Average Price



Month	2020	2021	2022
January	199,955	229,883	228,668
February	184,907	258,609	227,600
March	232,539	238,500	264,169
April	222,503	233,899	267,411
May	229,933	237,460	250,209
June	216,930	236,450	245,241
July	235,391	230,434	252,925
August	253,520	218,103	254,097
September	220,682	275,842	245,622
October	215,569	262,907	253,070
November	198,841	253,665	243,560
December	228,017	226,182	232,724

Median Price

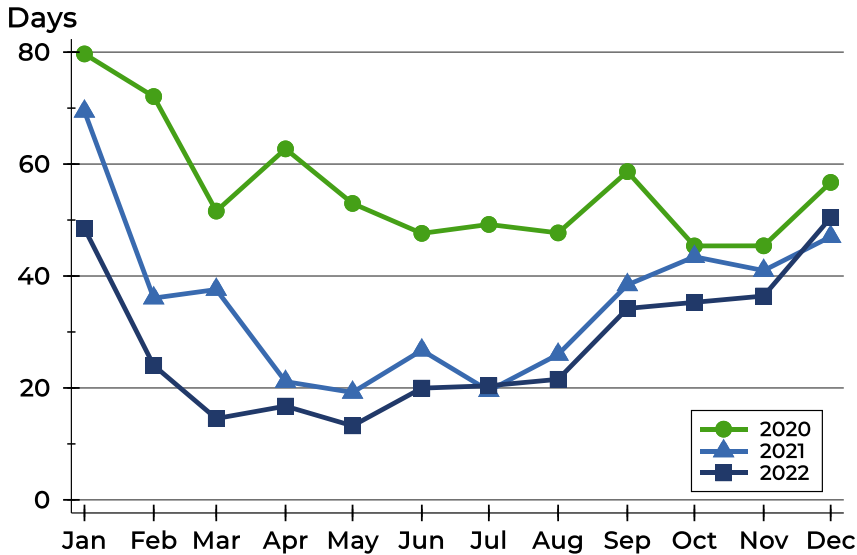


Month	2020	2021	2022
January	184,900	200,000	203,750
February	162,000	233,950	195,000
March	215,000	218,500	240,000
April	204,950	192,000	227,000
May	204,900	216,950	252,450
June	197,500	222,450	220,000
July	197,000	219,900	237,500
August	222,400	197,450	232,500
September	189,950	239,250	224,900
October	194,900	217,750	225,000
November	190,000	200,000	232,500
December	212,500	200,000	210,000



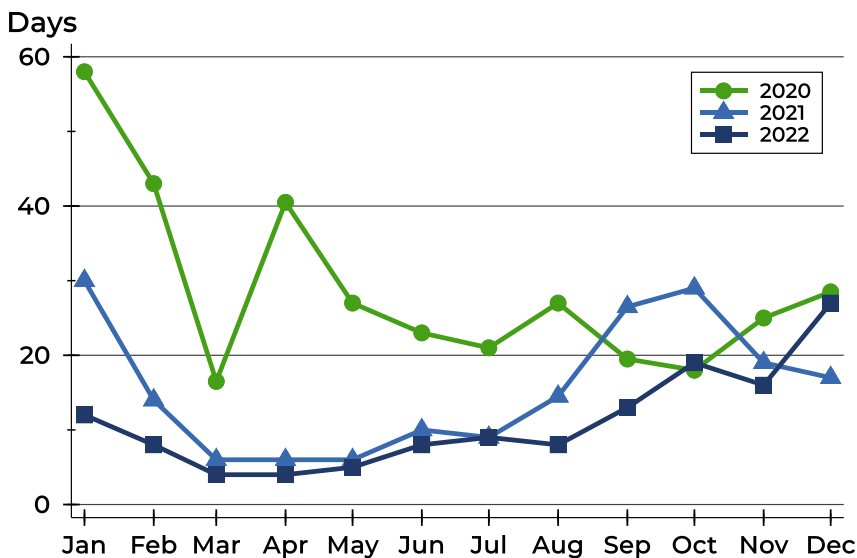
Riley County Contracts Written Analysis

Average DOM



Month	2020	2021	2022
January	80	69	48
February	72	36	24
March	52	38	15
April	63	21	17
May	53	19	13
June	48	27	20
July	49	20	20
August	48	26	22
September	59	38	34
October	45	43	35
November	45	41	36
December	57	47	50

Median DOM



Month	2020	2021	2022
January	58	30	12
February	43	14	8
March	17	6	4
April	41	6	4
May	27	6	5
June	23	10	8
July	21	9	9
August	27	15	8
September	20	27	13
October	18	29	19
November	25	19	16
December	29	17	27



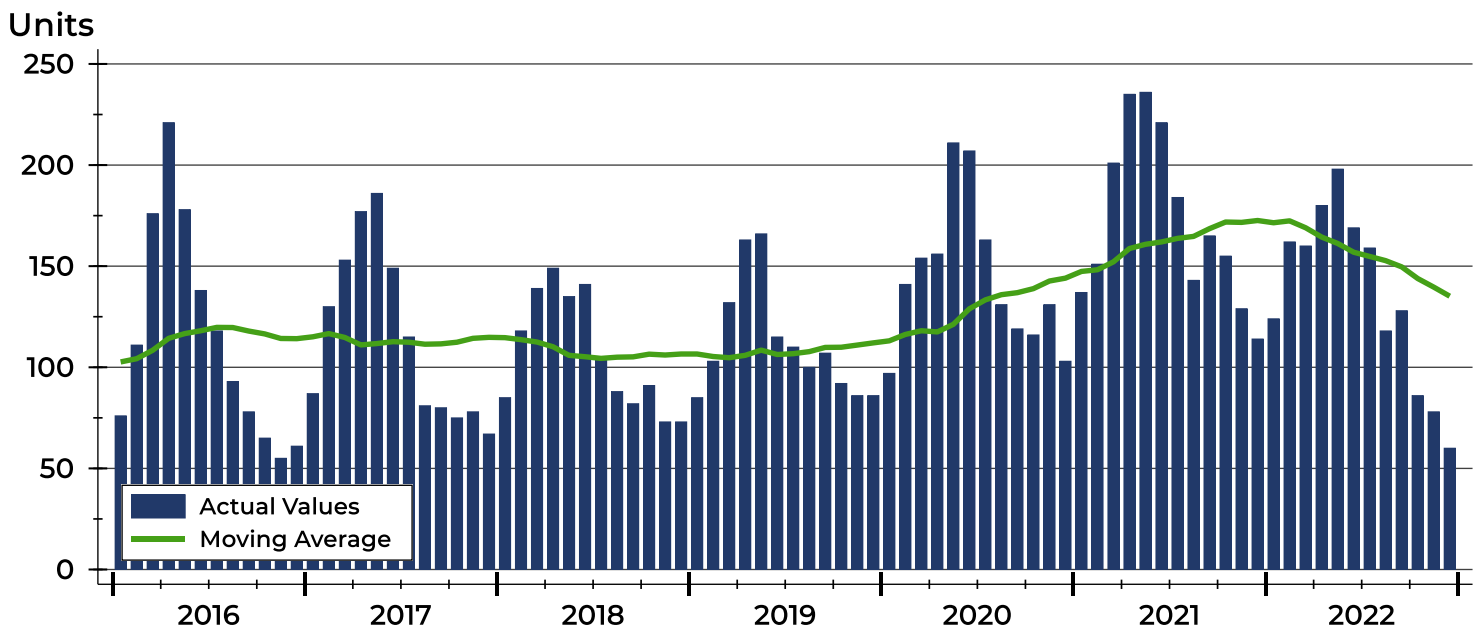
Riley County Pending Contracts Analysis

Summary Statistics for Pending Contracts		End of December		
		2022	2021	Change
Pending Contracts		60	114	-47.4%
Volume (1,000s)		14,360	28,089	-48.9%
Average	List Price	239,327	246,398	-2.9%
	Days on Market	42	44	-4.5%
	Percent of Original	97.7%	98.3%	-0.6%
Median	List Price	219,450	207,450	5.8%
	Days on Market	27	17	58.8%
	Percent of Original	100.0%	100.0%	0.0%

A total of 60 listings in Riley County had contracts pending at the end of December, down from 114 contracts pending at the end of December 2021.

Pending contracts reflect listings with a contract in place at the end of the month. In contrast, contracts written measures the number of listings put under contract during the month.

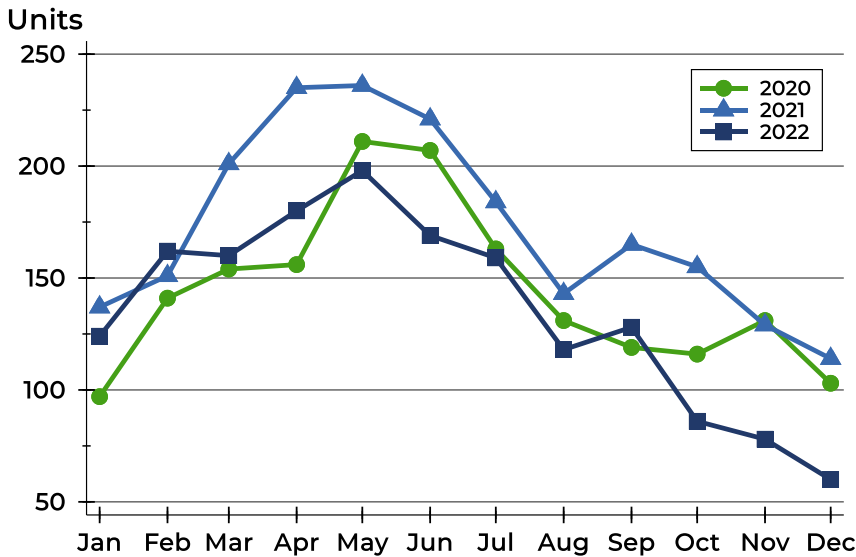
History of Pending Contracts





Riley County Pending Contracts Analysis

Pending Contracts by Month



Month	2020	2021	2022
January	97	137	124
February	141	151	162
March	154	201	160
April	156	235	180
May	211	236	198
June	207	221	169
July	163	184	159
August	131	143	118
September	119	165	128
October	116	155	86
November	131	129	78
December	103	114	60

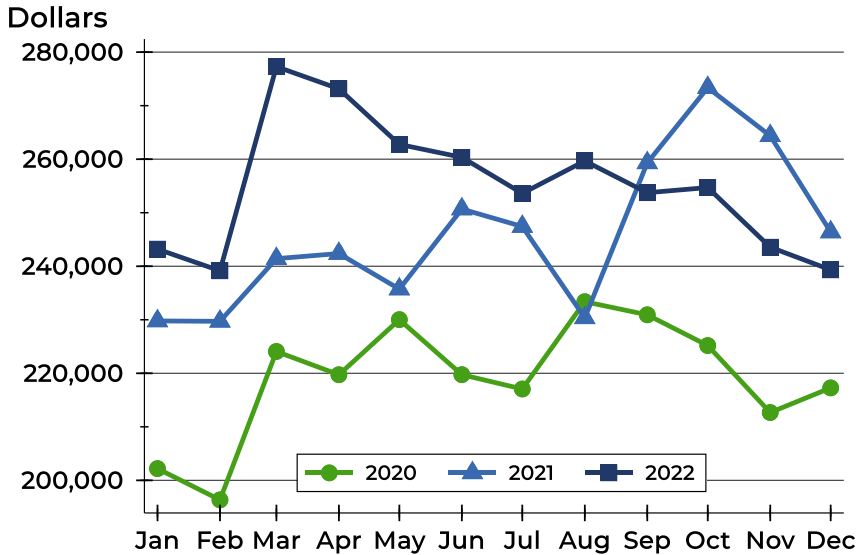
Pending Contracts by Price Range

Price Range	Pending Contracts		List Price		Days on Market		Price as % of Orig.	
	Number	Percent	Average	Median	Avg.	Med.	Avg.	Med.
Below \$25,000	0	0.0%	N/A	N/A	N/A	N/A	N/A	N/A
\$25,000-\$49,999	1	1.7%	40,000	40,000	119	119	53.3%	53.3%
\$50,000-\$99,999	1	1.7%	68,000	68,000	48	48	97.1%	97.1%
\$100,000-\$124,999	6	10.0%	112,900	112,450	47	21	97.9%	98.5%
\$125,000-\$149,999	3	5.0%	131,567	129,700	17	16	98.7%	100.0%
\$150,000-\$174,999	6	10.0%	161,500	162,000	19	17	99.5%	100.0%
\$175,000-\$199,999	6	10.0%	193,233	193,250	20	17	99.4%	100.0%
\$200,000-\$249,999	16	26.7%	221,038	219,900	51	31	98.9%	100.0%
\$250,000-\$299,999	7	11.7%	259,129	259,000	22	16	99.0%	100.0%
\$300,000-\$399,999	8	13.3%	335,100	327,000	38	16	97.2%	99.2%
\$400,000-\$499,999	3	5.0%	453,967	475,000	75	106	100.0%	100.0%
\$500,000-\$749,999	3	5.0%	552,633	549,900	95	118	93.4%	95.2%
\$750,000-\$999,999	0	0.0%	N/A	N/A	N/A	N/A	N/A	N/A
\$1,000,000 and up	0	0.0%	N/A	N/A	N/A	N/A	N/A	N/A



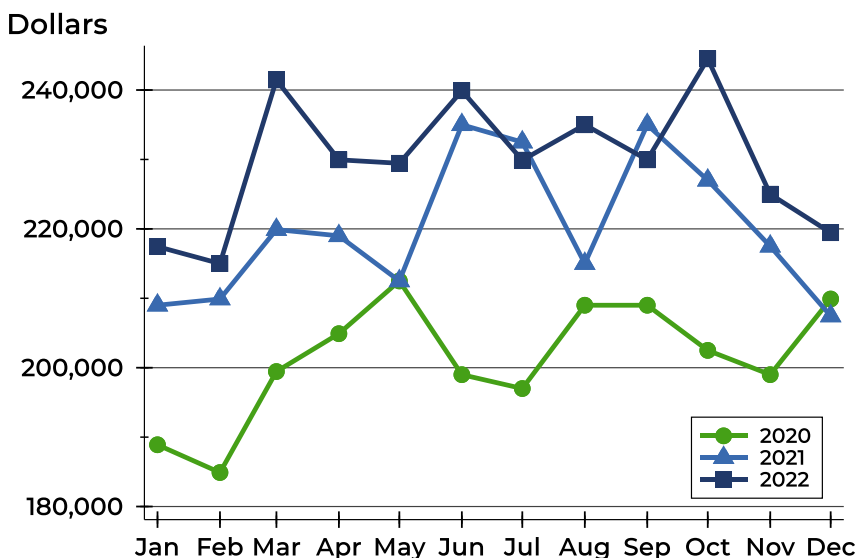
Riley County Pending Contracts Analysis

Average Price



Month	2020	2021	2022
January	202,199	229,781	243,204
February	196,352	229,712	239,149
March	224,078	241,420	277,287
April	219,735	242,377	273,152
May	230,029	235,738	262,768
June	219,742	250,688	260,348
July	217,070	247,424	253,615
August	233,377	230,364	259,667
September	230,927	259,319	253,740
October	225,181	273,363	254,702
November	212,669	264,377	243,560
December	217,276	246,398	239,327

Median Price

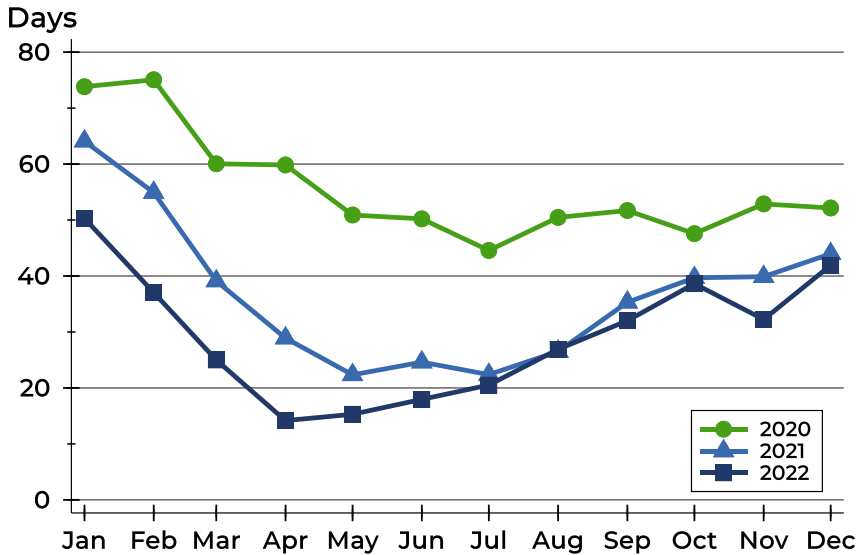


Month	2020	2021	2022
January	188,900	209,000	217,450
February	184,900	209,900	215,000
March	199,450	219,900	241,460
April	204,900	219,000	229,950
May	212,500	212,500	229,450
June	199,000	235,000	239,900
July	197,000	232,500	229,900
August	209,000	215,000	235,000
September	209,000	235,000	229,950
October	202,498	227,000	244,500
November	199,000	217,500	225,000
December	209,900	207,450	219,450



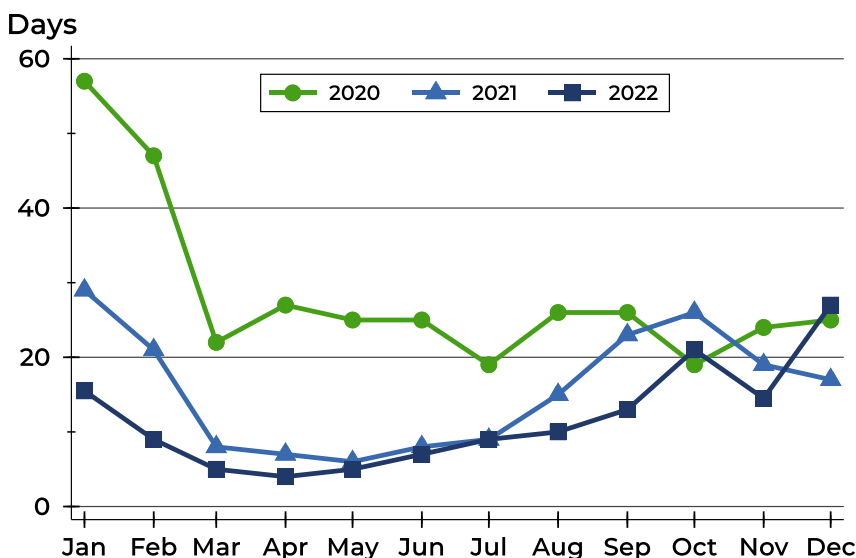
Riley County Pending Contracts Analysis

Average DOM



Month	2020	2021	2022
January	74	64	50
February	75	55	37
March	60	39	25
April	60	29	14
May	51	22	15
June	50	25	18
July	45	22	21
August	50	27	27
September	52	35	32
October	48	40	39
November	53	40	32
December	52	44	42

Median DOM



Month	2020	2021	2022
January	57	29	16
February	47	21	9
March	22	8	5
April	27	7	4
May	25	6	5
June	25	8	7
July	19	9	9
August	26	15	10
September	26	23	13
October	19	26	21
November	24	19	15
December	25	17	27