



**April
2022**

Flint Hills MLS Statistics



**FLINT HILLS
ASSOCIATION
OF REALTORS®**

Riley County Housing Report



Market Overview

Riley County Home Sales Fell in April

Total home sales in Riley County fell last month to 79 units, compared to 87 units in April 2021. Total sales volume was \$22.8 million, up from a year earlier.

The median sale price in April was \$280,000, up from \$200,000 a year earlier. Homes that sold in April were typically on the market for 6 days and sold for 100.0% of their list prices.

Riley County Active Listings Down at End of April

The total number of active listings in Riley County at the end of April was 128 units, down from 150 at the same point in 2021. This represents a 1.3 months' supply of homes available for sale. The median list price of homes on the market at the end of April was \$246,000.

During April, a total of 109 contracts were written down from 118 in April 2021. At the end of the month, there were 181 contracts still pending.

Report Contents

- Summary Statistics – Page 2
- Closed Listing Analysis – Page 3
- Active Listings Analysis – Page 7
- Months' Supply Analysis – Page 11
- New Listings Analysis – Page 12
- Contracts Written Analysis – Page 15
- Pending Contracts Analysis – Page 19

Contact Information

Margaret Pendleton, Association Executive
 Flint Hills Association of REALTORS®
 205 S. Seth Child Road
 Manhattan, KS 66502
 685-776-1212
ae@flinthillsrealtors.net
www.flinthillsrealtors.net



**April
2022**

Flint Hills MLS Statistics



**FLINT HILLS
ASSOCIATION
OF REALTORS®**

Riley County Summary Statistics

April MLS Statistics Three-year History		Current Month			Year-to-Date		
		2022	2021	2020	2022	2021	2020
Home Sales		79	87	63	291	295	231
Change from prior year		-9.2%	38.1%	-6.0%	-1.4%	27.7%	16.1%
Active Listings		128	150	306	N/A	N/A	N/A
Change from prior year		-14.7%	-51.0%	-15.7%			
Months' Supply		1.3	1.8	4.5	N/A	N/A	N/A
Change from prior year		-27.8%	-60.0%	-21.1%			
New Listings		107	139	84	411	469	447
Change from prior year		-23.0%	65.5%	-37.8%	-12.4%	4.9%	-9.0%
Contracts Written		109	118	68	374	433	306
Change from prior year		-7.6%	73.5%	-25.3%	-13.6%	41.5%	4.8%
Pending Contracts		181	235	156	N/A	N/A	N/A
Change from prior year		-23.0%	50.6%	-4.3%			
Sales Volume (1,000s)		22,753	19,675	13,650	68,809	65,206	46,005
Change from prior year		15.6%	44.1%	5.1%	5.5%	41.7%	7.8%
Average	Sale Price	288,013	226,152	216,671	236,456	221,036	199,158
	Change from prior year	27.4%	4.4%	11.7%	7.0%	11.0%	-7.2%
	List Price of Actives	290,244	285,687	254,270	N/A	N/A	N/A
	Change from prior year	1.6%	12.4%	-2.9%			
	Days on Market	36	35	65	38	52	73
Change from prior year	2.9%	-46.2%	-4.4%	-26.9%	-28.8%	-7.6%	
	Percent of List	100.3%	99.9%	98.0%	99.6%	98.4%	97.9%
Change from prior year	0.4%	1.9%	0.3%	1.2%	0.5%	0.4%	
	Percent of Original	100.2%	99.1%	97.2%	98.3%	97.0%	95.5%
Change from prior year	1.1%	2.0%	1.3%	1.3%	1.6%	0.7%	
Median	Sale Price	280,000	200,000	183,500	215,000	198,000	176,500
	Change from prior year	40.0%	9.0%	3.7%	8.6%	12.2%	-9.5%
	List Price of Actives	246,000	215,000	199,000	N/A	N/A	N/A
	Change from prior year	14.4%	8.0%	-2.9%			
	Days on Market	6	7	24	11	20	44
Change from prior year	-14.3%	-70.8%	-25.0%	-45.0%	-54.5%	-15.4%	
	Percent of List	100.0%	100.0%	98.8%	100.0%	99.1%	98.5%
Change from prior year	0.0%	1.2%	0.7%	0.9%	0.6%	0.4%	
	Percent of Original	100.0%	100.0%	98.0%	100.0%	98.6%	97.4%
Change from prior year	0.0%	2.0%	0.5%	1.4%	1.2%	0.7%	

Note: Year-to-date statistics cannot be calculated for Active Listings, Months' Supply and Pending Contracts.



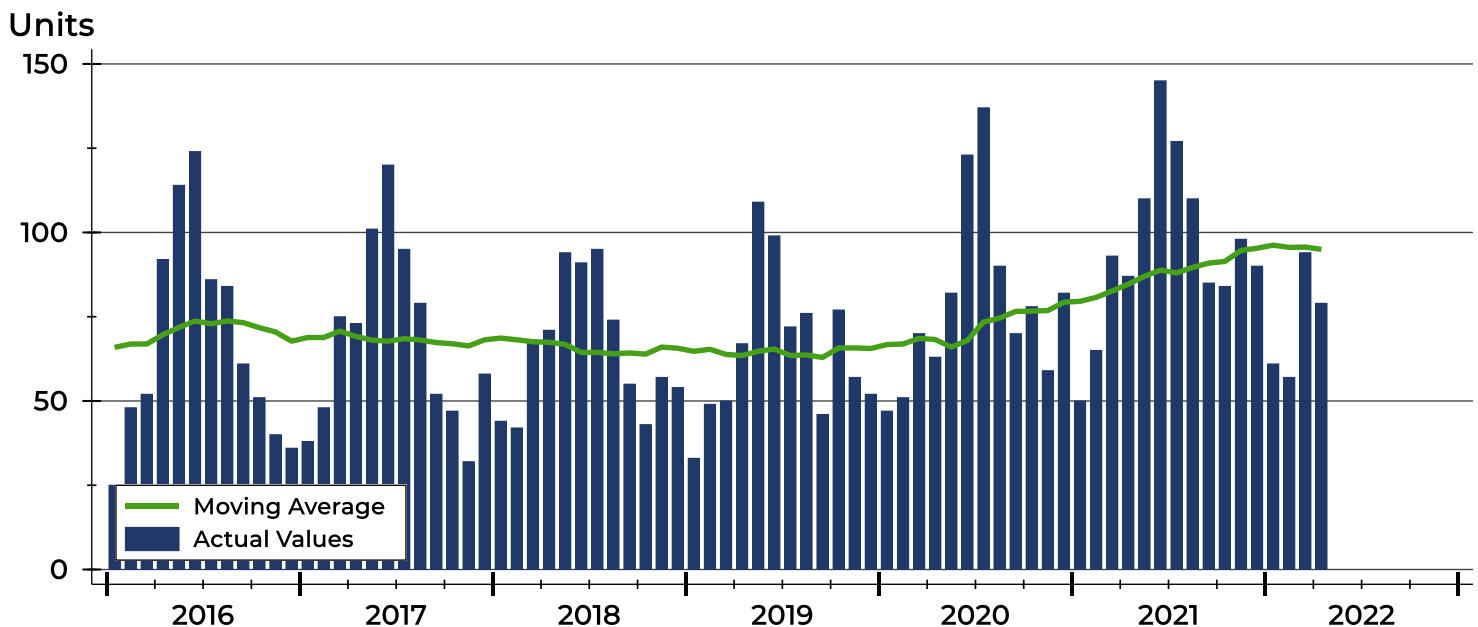
Riley County Closed Listings Analysis

Summary Statistics for Closed Listings		2022	April 2021	Change	2022	Year-to-Date 2021	Change
Closed Listings		79	87	-9.2%	291	295	-1.4%
Volume (1,000s)		22,753	19,675	15.6%	68,809	65,206	5.5%
Months' Supply		1.3	1.8	-27.8%	N/A	N/A	N/A
Average	Sale Price	288,013	226,152	27.4%	236,456	221,036	7.0%
	Days on Market	36	35	2.9%	38	52	-26.9%
	Percent of List	100.3%	99.9%	0.4%	99.6%	98.4%	1.2%
	Percent of Original	100.2%	99.1%	1.1%	98.3%	97.0%	1.3%
Median	Sale Price	280,000	200,000	40.0%	215,000	198,000	8.6%
	Days on Market	6	7	-14.3%	11	20	-45.0%
	Percent of List	100.0%	100.0%	0.0%	100.0%	99.1%	0.9%
	Percent of Original	100.0%	100.0%	0.0%	100.0%	98.6%	1.4%

A total of 79 homes sold in Riley County in April, down from 87 units in April 2021. Total sales volume rose to \$22.8 million compared to \$19.7 million in the previous year.

The median sales price in April was \$280,000, up 40.0% compared to the prior year. Median days on market was 6 days, down from 9 days in March, and down from 7 in April 2021.

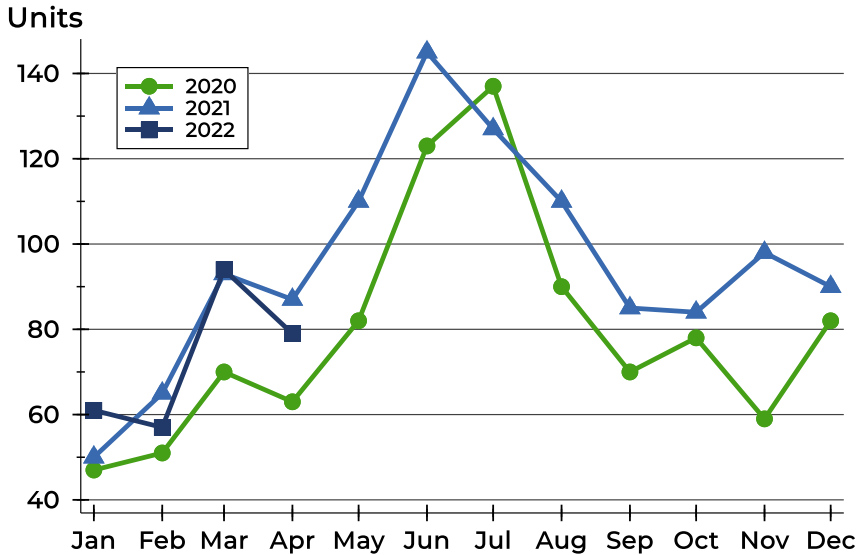
History of Closed Listings





Riley County Closed Listings Analysis

Closed Listings by Month



Month	2020	2021	2022
January	47	50	61
February	51	65	57
March	70	93	94
April	63	87	79
May	82	110	
June	123	145	
July	137	127	
August	90	110	
September	70	85	
October	78	84	
November	59	98	
December	82	90	

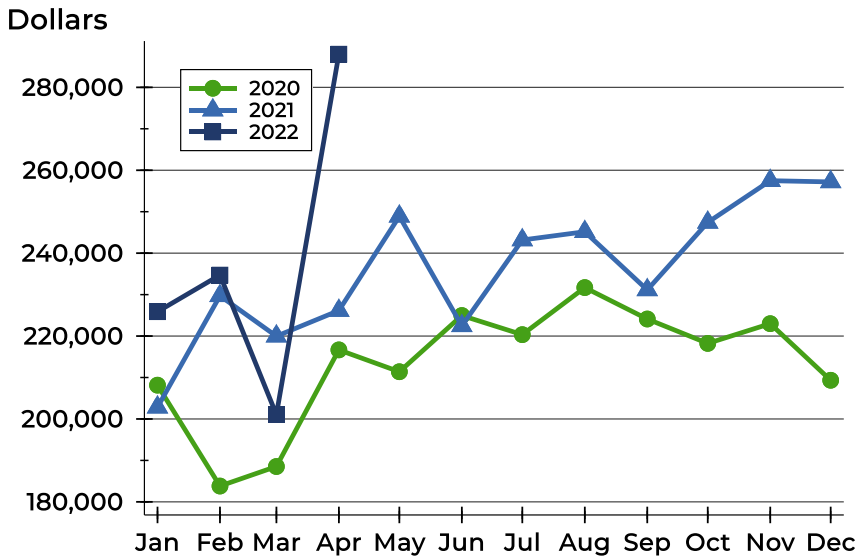
Closed Listings by Price Range

Price Range	Sales		Months' Supply	Sale Price		Days on Market		Price as % of List		Price as % of Orig.	
	Number	Percent		Average	Median	Avg.	Med.	Avg.	Med.	Avg.	Med.
Below \$25,000	0	0.0%	N/A	N/A	N/A	N/A	N/A	N/A	N/A	N/A	N/A
\$25,000-\$49,999	1	1.3%	1.7	35,000	35,000	16	16	77.8%	77.8%	77.8%	77.8%
\$50,000-\$99,999	1	1.3%	1.9	83,000	83,000	8	8	100.6%	100.6%	70.0%	70.0%
\$100,000-\$124,999	3	3.8%	2.2	117,667	118,000	31	22	99.4%	100.0%	99.4%	100.0%
\$125,000-\$149,999	4	5.1%	1.1	141,250	139,500	69	6	102.2%	101.9%	100.3%	101.2%
\$150,000-\$174,999	6	7.6%	0.8	158,167	155,500	20	9	98.1%	97.9%	97.9%	97.9%
\$175,000-\$199,999	5	6.3%	0.9	183,435	182,177	6	2	104.0%	103.2%	103.4%	103.2%
\$200,000-\$249,999	15	19.0%	1.1	233,100	235,000	17	4	101.2%	100.0%	101.2%	100.4%
\$250,000-\$299,999	8	10.1%	1.4	275,500	276,750	7	3	101.2%	101.2%	100.9%	101.2%
\$300,000-\$399,999	23	29.1%	1.4	342,824	339,900	63	12	100.4%	100.0%	102.5%	100.2%
\$400,000-\$499,999	10	12.7%	2.5	464,938	472,500	51	31	99.0%	100.0%	98.0%	100.0%
\$500,000-\$749,999	3	3.8%	1.5	538,667	535,000	3	2	100.7%	100.0%	100.1%	100.0%
\$750,000-\$999,999	0	0.0%	6.0	N/A	N/A	N/A	N/A	N/A	N/A	N/A	N/A
\$1,000,000 and up	0	0.0%	24.0	N/A	N/A	N/A	N/A	N/A	N/A	N/A	N/A



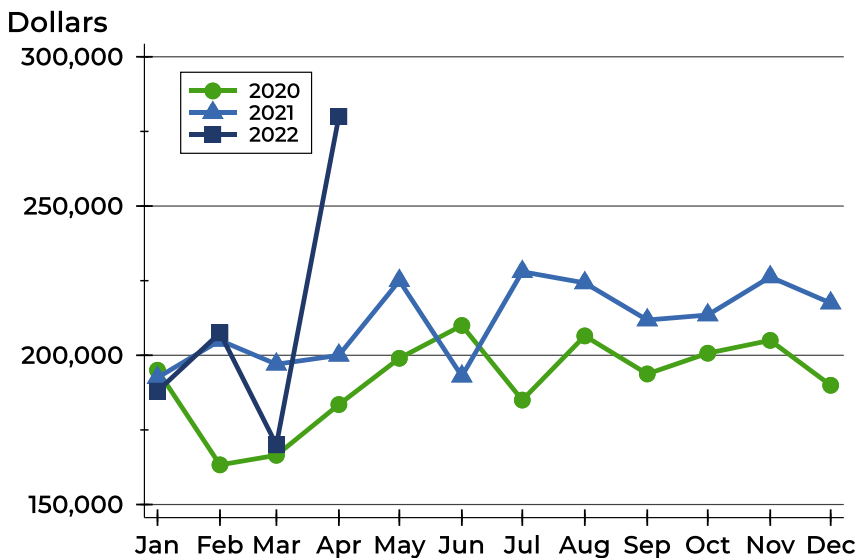
Riley County Closed Listings Analysis

Average Price



Month	2020	2021	2022
January	208,157	202,830	225,875
February	183,819	229,715	234,723
March	188,530	219,973	201,043
April	216,671	226,152	288,013
May	211,400	248,898	
June	224,955	222,470	
July	220,343	243,175	
August	231,701	245,172	
September	224,114	231,140	
October	218,236	247,422	
November	222,989	257,484	
December	209,342	257,195	

Median Price

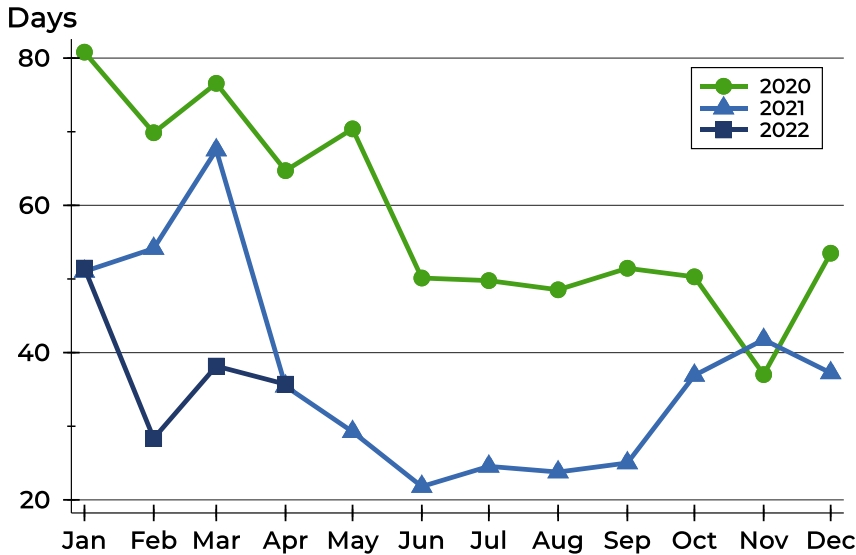


Month	2020	2021	2022
January	195,000	192,500	188,000
February	163,295	205,000	207,500
March	166,500	197,000	170,000
April	183,500	200,000	280,000
May	199,000	225,000	
June	210,000	193,000	
July	185,000	228,000	
August	206,500	224,250	
September	193,750	211,819	
October	200,700	213,500	
November	205,000	226,250	
December	189,950	217,500	



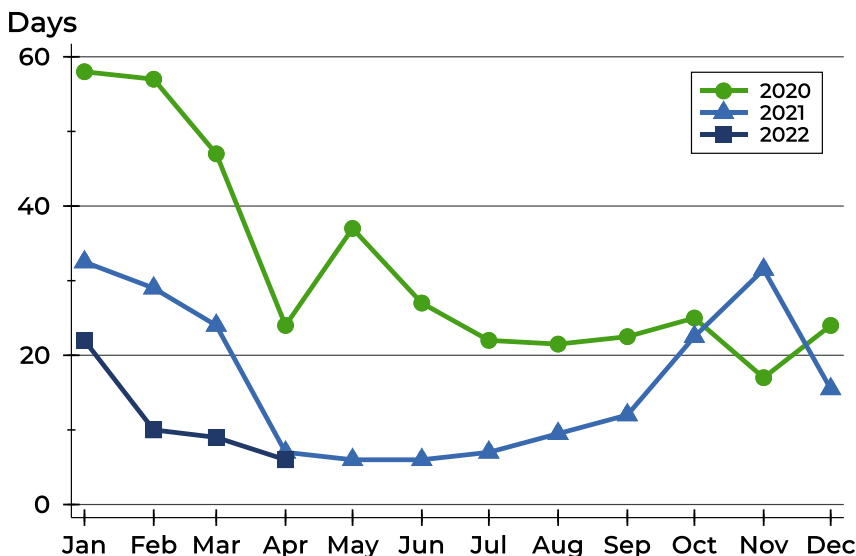
Riley County Closed Listings Analysis

Average DOM



Month	2020	2021	2022
January	81	51	51
February	70	54	28
March	77	68	38
April	65	35	36
May	70	29	
June	50	22	
July	50	25	
August	49	24	
September	51	25	
October	50	37	
November	37	42	
December	54	37	

Median DOM



Month	2020	2021	2022
January	58	33	22
February	57	29	10
March	47	24	9
April	24	7	6
May	37	6	
June	27	6	
July	22	7	
August	22	10	
September	23	12	
October	25	23	
November	17	32	
December	24	16	



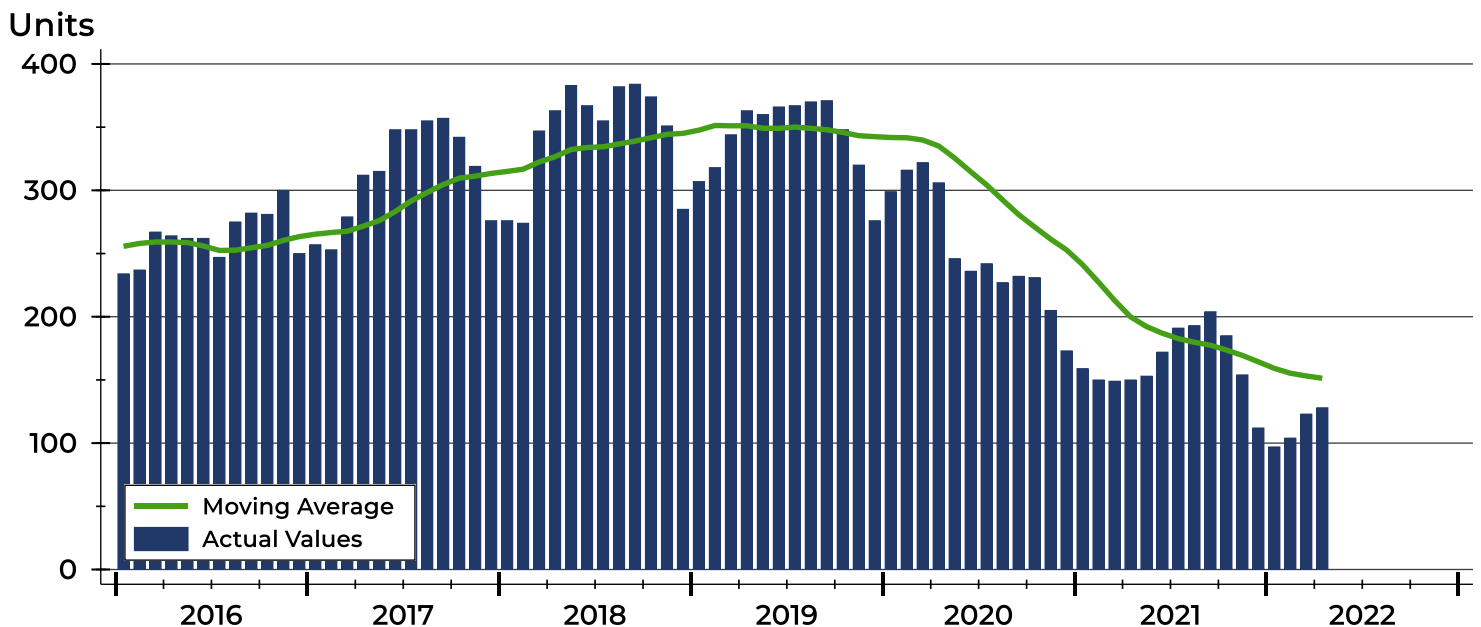
Riley County Active Listings Analysis

Summary Statistics for Active Listings		2022	End of April 2021	Change
Active Listings		128	150	-14.7%
Volume (1,000s)		37,151	42,853	-13.3%
Months' Supply		1.3	1.8	-27.8%
Average	List Price	290,244	285,687	1.6%
	Days on Market	72	78	-7.7%
	Percent of Original	98.5%	98.2%	0.3%
Median	List Price	246,000	215,000	14.4%
	Days on Market	38	42	-9.5%
	Percent of Original	100.0%	100.0%	0.0%

A total of 128 homes were available for sale in Riley County at the end of April. This represents a 1.3 months' supply of active listings.

The median list price of homes on the market at the end of April was \$246,000, up 14.4% from 2021. The typical time on market for active listings was 38 days, down from 42 days a year earlier.

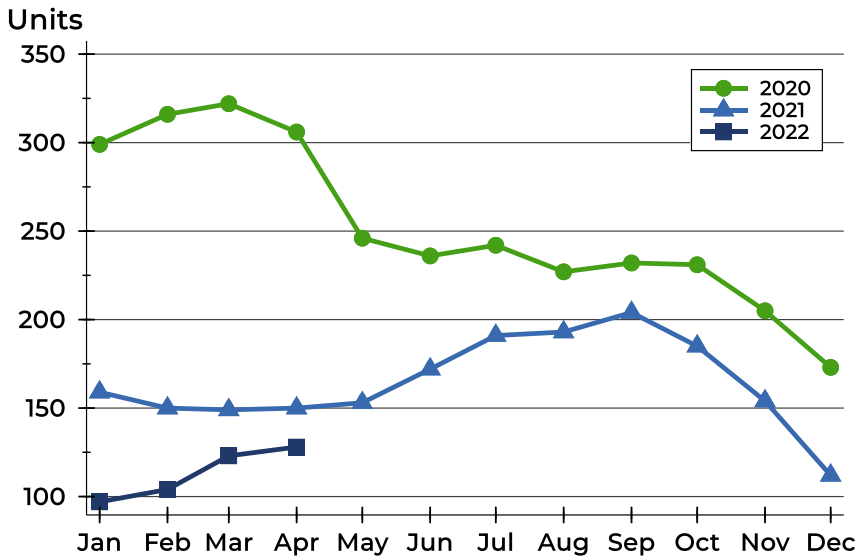
History of Active Listings





Riley County Active Listings Analysis

Active Listings by Month



Month	2020	2021	2022
January	299	159	97
February	316	150	104
March	322	149	123
April	306	150	128
May	246	153	
June	236	172	
July	242	191	
August	227	193	
September	232	204	
October	231	185	
November	205	154	
December	173	112	

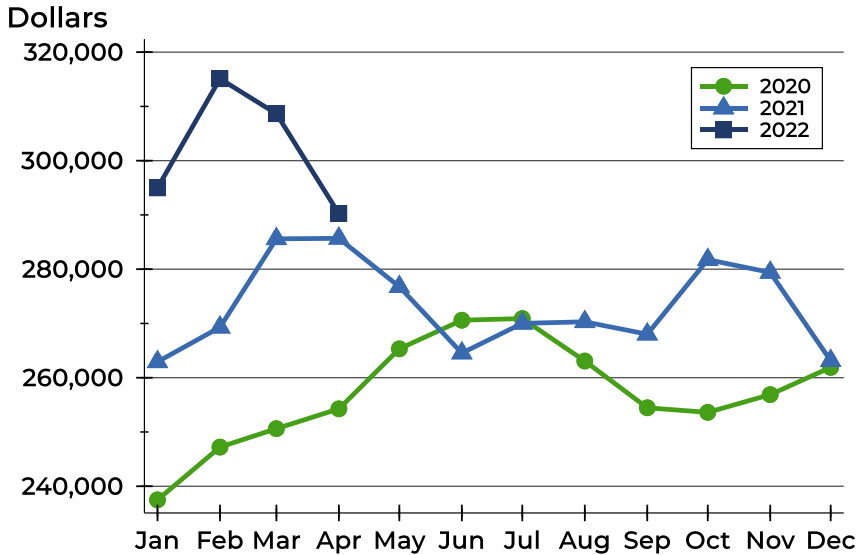
Active Listings by Price Range

Price Range	Active Listings Number	Active Listings Percent	Months' Supply	List Price Average	List Price Median	Days on Market Avg.	Days on Market Med.	Price as % of Orig. Avg.	Price as % of Orig. Med.
Below \$25,000	0	0.0%	N/A	N/A	N/A	N/A	N/A	N/A	N/A
\$25,000-\$49,999	1	0.8%	1.7	49,900	49,900	11	11	90.7%	90.7%
\$50,000-\$99,999	7	5.5%	1.9	83,329	92,500	72	67	98.1%	100.0%
\$100,000-\$124,999	12	9.4%	2.2	113,558	115,000	37	28	96.9%	100.0%
\$125,000-\$149,999	10	7.8%	1.1	140,140	144,500	72	61	99.2%	100.0%
\$150,000-\$174,999	9	7.0%	0.8	163,689	163,000	39	35	98.4%	100.0%
\$175,000-\$199,999	11	8.6%	0.9	186,809	185,000	55	34	99.2%	100.0%
\$200,000-\$249,999	18	14.1%	1.1	231,711	237,450	136	34	97.9%	100.0%
\$250,000-\$299,999	18	14.1%	1.4	279,300	281,450	35	14	98.4%	100.0%
\$300,000-\$399,999	23	18.0%	1.4	360,871	365,000	80	44	99.2%	100.0%
\$400,000-\$499,999	10	7.8%	2.5	447,061	443,305	70	33	100.0%	100.0%
\$500,000-\$749,999	4	3.1%	1.5	603,500	607,250	56	26	101.2%	100.0%
\$750,000-\$999,999	3	2.3%	6.0	947,667	958,000	111	119	93.3%	100.0%
\$1,000,000 and up	2	1.6%	24.0	1,500,000	1,500,000	167	167	100.0%	100.0%



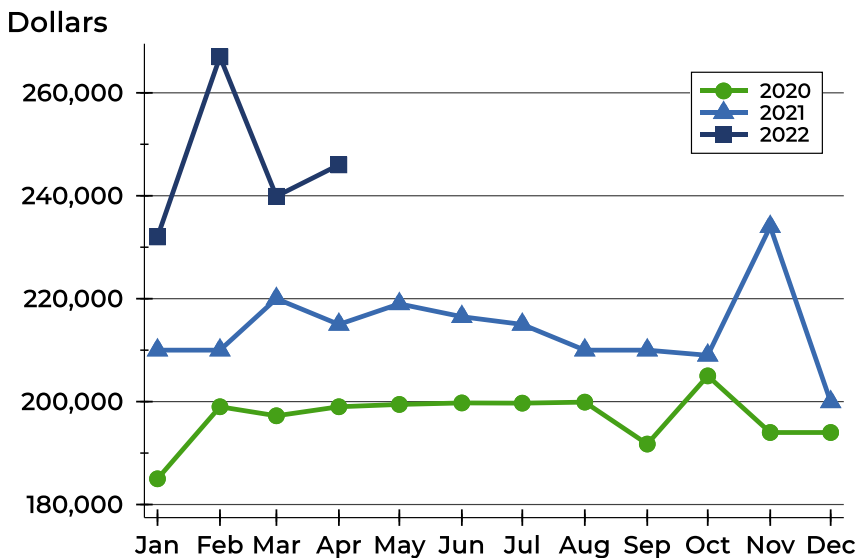
Riley County Active Listings Analysis

Average Price



Month	2020	2021	2022
January	237,490	262,929	294,980
February	247,217	269,299	315,098
March	250,613	285,597	308,649
April	254,270	285,687	290,244
May	265,322	276,770	
June	270,600	264,539	
July	270,904	270,021	
August	263,083	270,304	
September	254,462	268,017	
October	253,619	281,756	
November	256,881	279,402	
December	261,905	263,144	

Median Price

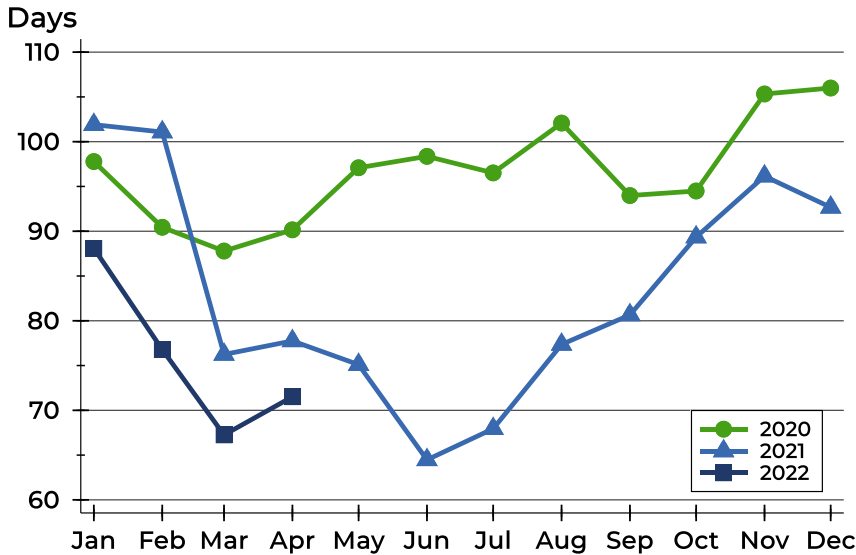


Month	2020	2021	2022
January	185,000	210,000	232,000
February	199,000	210,000	267,000
March	197,245	220,000	239,900
April	199,000	215,000	246,000
May	199,450	219,000	
June	199,748	216,500	
July	199,700	215,000	
August	199,900	210,000	
September	191,750	210,000	
October	205,000	209,000	
November	194,000	234,000	
December	194,000	199,950	



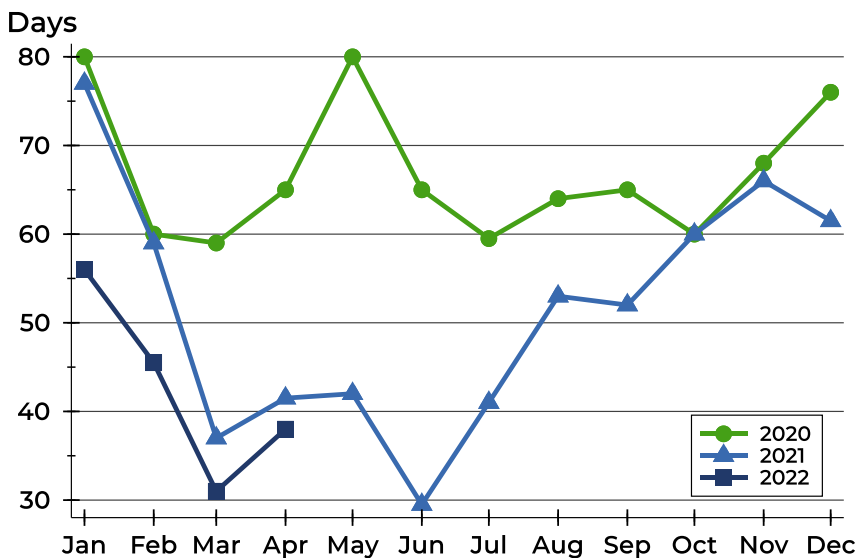
Riley County Active Listings Analysis

Average DOM



Month	2020	2021	2022
January	98	102	88
February	90	101	77
March	88	76	67
April	90	78	72
May	97	75	
June	98	64	
July	97	68	
August	102	77	
September	94	81	
October	94	89	
November	105	96	
December	106	93	

Median DOM

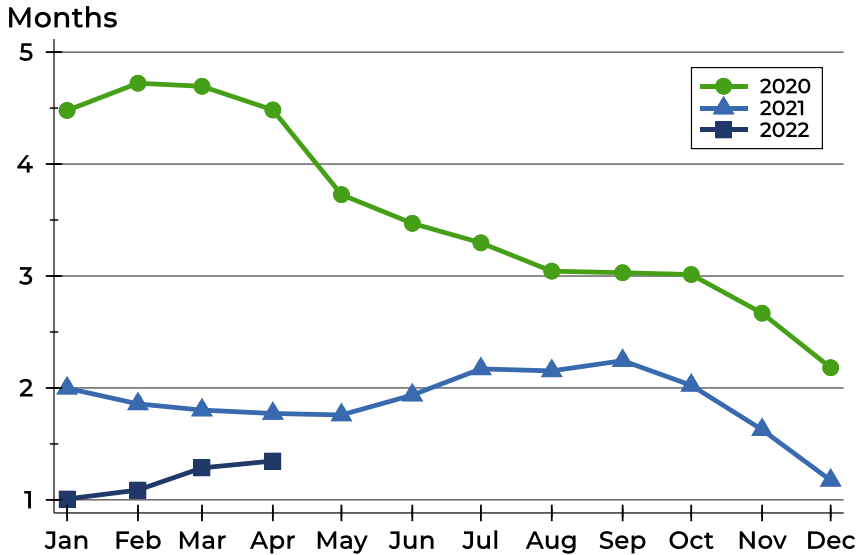


Month	2020	2021	2022
January	80	77	56
February	60	59	46
March	59	37	31
April	65	42	38
May	80	42	
June	65	30	
July	60	41	
August	64	53	
September	65	52	
October	60	60	
November	68	66	
December	76	62	



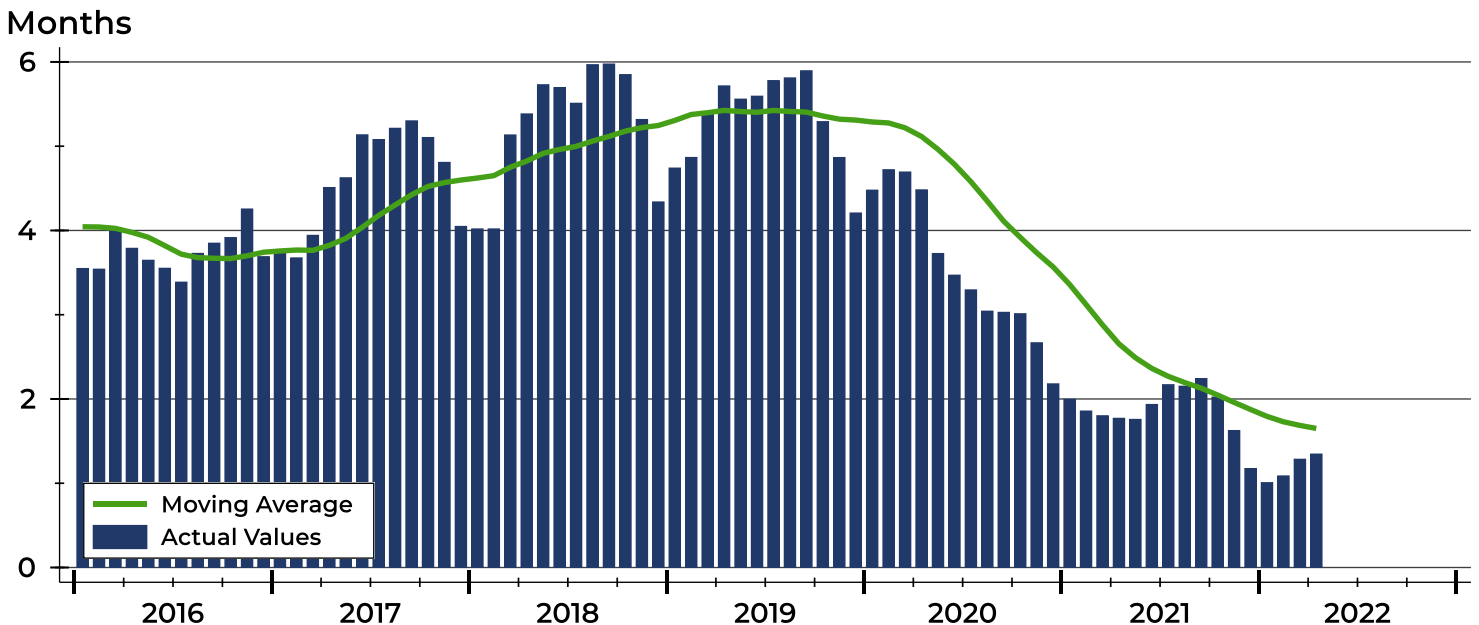
Riley County Months' Supply Analysis

Months' Supply by Month



Month	2020	2021	2022
January	4.5	2.0	1.0
February	4.7	1.9	1.1
March	4.7	1.8	1.3
April	4.5	1.8	1.3
May	3.7	1.8	
June	3.5	1.9	
July	3.3	2.2	
August	3.0	2.2	
September	3.0	2.2	
October	3.0	2.0	
November	2.7	1.6	
December	2.2	1.2	

History of Month's Supply





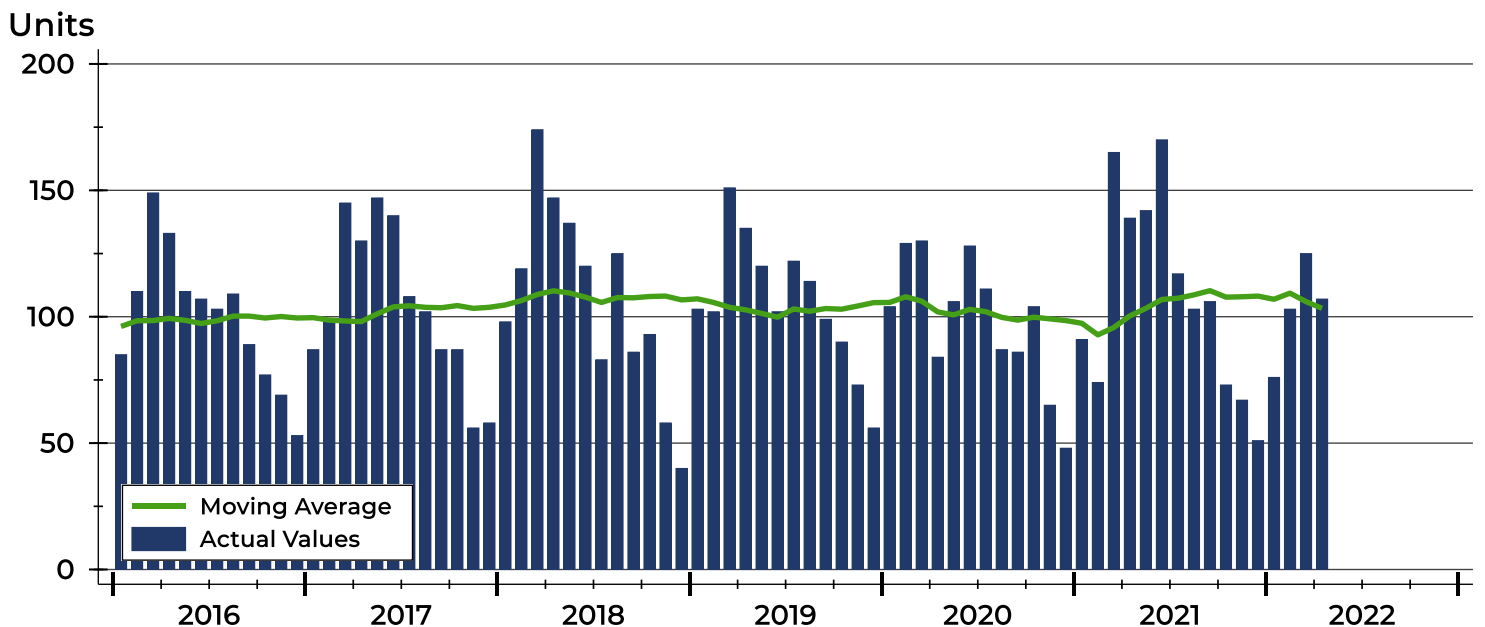
Riley County New Listings Analysis

Summary Statistics for New Listings		2022	April 2021	Change
Current Month	New Listings	107	139	-23.0%
	Volume (1,000s)	26,826	32,835	-18.3%
	Average List Price	250,708	236,225	6.1%
	Median List Price	225,000	199,000	13.1%
Year-to-Date	New Listings	411	469	-12.4%
	Volume (1,000s)	107,171	115,887	-7.5%
	Average List Price	260,757	247,094	5.5%
	Median List Price	230,000	215,000	7.0%

A total of 107 new listings were added in Riley County during April, down 23.0% from the same month in 2021. Year-to-date Riley County has seen 411 new listings.

The median list price of these homes was \$225,000 up from \$199,000 in 2021.

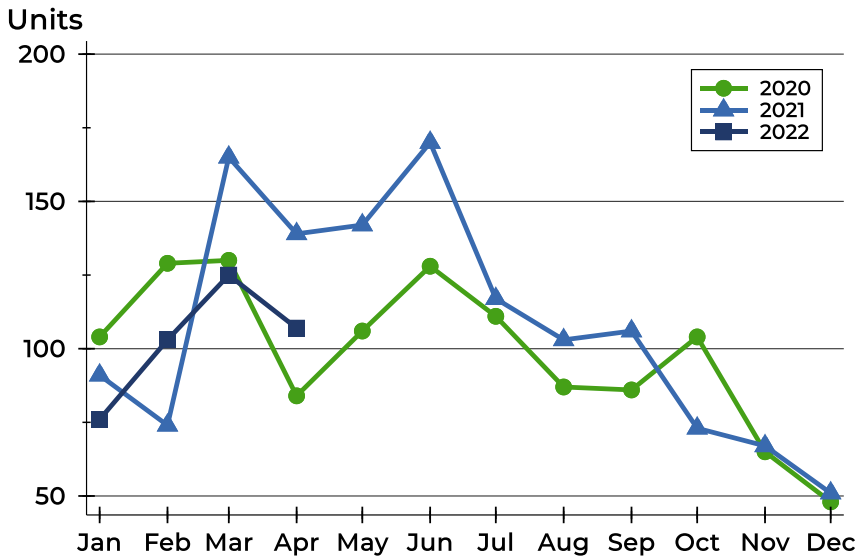
History of New Listings





Riley County New Listings Analysis

New Listings by Month



Month	2020	2021	2022
January	104	91	76
February	129	74	103
March	130	165	125
April	84	139	107
May	106	142	
June	128	170	
July	111	117	
August	87	103	
September	86	106	
October	104	73	
November	65	67	
December	48	51	

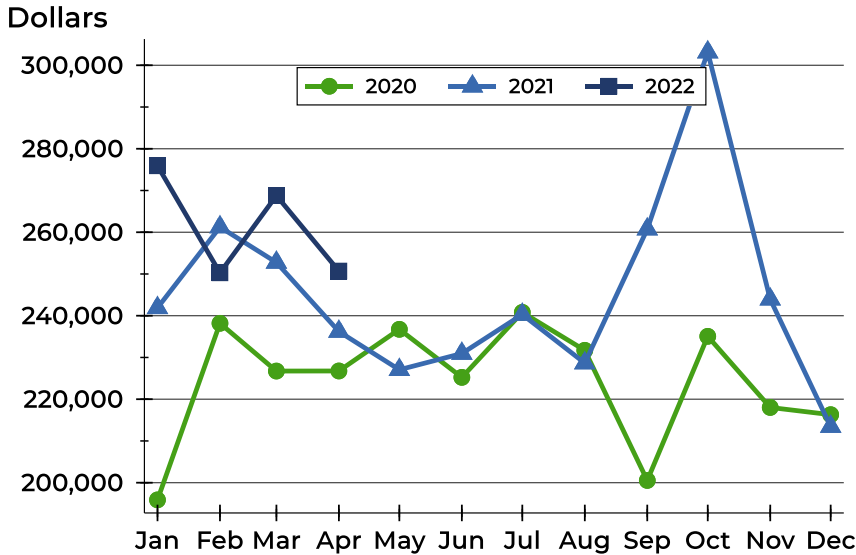
New Listings by Price Range

Price Range	New Listings		List Price		Days on Market		Price as % of Orig.	
	Number	Percent	Average	Median	Avg.	Med.	Avg.	Med.
Below \$25,000	0	0.0%	N/A	N/A	N/A	N/A	N/A	N/A
\$25,000-\$49,999	1	0.9%	49,900	49,900	13	13	90.7%	90.7%
\$50,000-\$99,999	1	0.9%	90,000	90,000	19	19	100.0%	100.0%
\$100,000-\$124,999	3	2.8%	113,000	110,000	23	29	100.0%	100.0%
\$125,000-\$149,999	4	3.7%	136,200	134,950	4	4	98.2%	100.0%
\$150,000-\$174,999	14	13.1%	163,305	163,450	7	4	100.0%	100.0%
\$175,000-\$199,999	18	16.8%	189,350	190,000	6	3	99.6%	100.0%
\$200,000-\$249,999	25	23.4%	227,316	225,000	10	6	99.2%	100.0%
\$250,000-\$299,999	15	14.0%	268,093	265,000	7	5	100.0%	100.0%
\$300,000-\$399,999	17	15.9%	352,112	349,000	10	9	99.6%	100.0%
\$400,000-\$499,999	8	7.5%	442,788	441,500	16	17	98.4%	100.0%
\$500,000-\$749,999	0	0.0%	N/A	N/A	N/A	N/A	N/A	N/A
\$750,000-\$999,999	1	0.9%	875,000	875,000	1	1	100.0%	100.0%
\$1,000,000 and up	0	0.0%	N/A	N/A	N/A	N/A	N/A	N/A



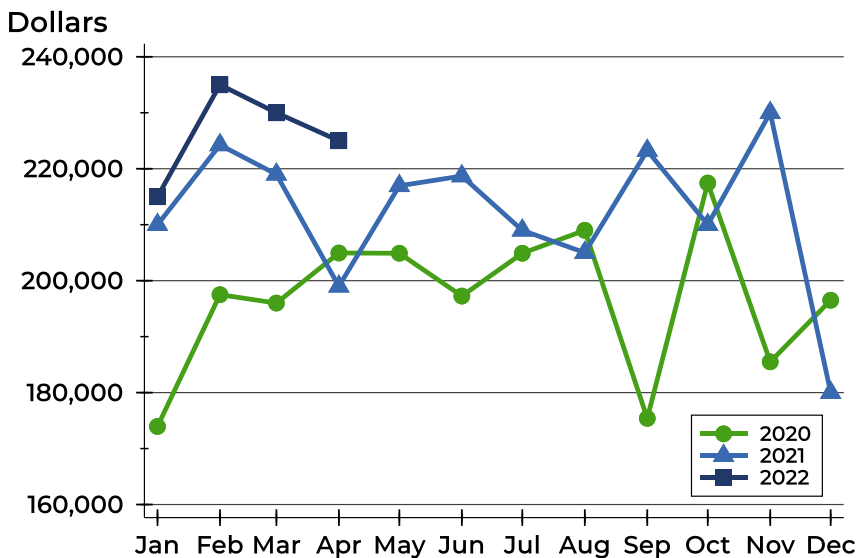
Riley County New Listings Analysis

Average Price



Month	2020	2021	2022
January	195,887	241,888	275,926
February	238,191	261,254	250,276
March	226,747	252,772	268,772
April	226,764	236,225	250,708
May	236,745	227,067	
June	225,242	230,952	
July	240,816	240,298	
August	231,720	228,658	
September	200,543	260,735	
October	235,066	303,145	
November	218,030	243,951	
December	216,300	213,448	

Median Price



Month	2020	2021	2022
January	173,950	210,000	215,000
February	197,500	224,250	235,000
March	196,000	219,000	230,000
April	204,948	199,000	225,000
May	204,900	216,950	
June	197,250	218,700	
July	204,900	209,000	
August	209,000	205,000	
September	175,400	223,250	
October	217,450	209,999	
November	185,500	230,000	
December	196,500	180,000	

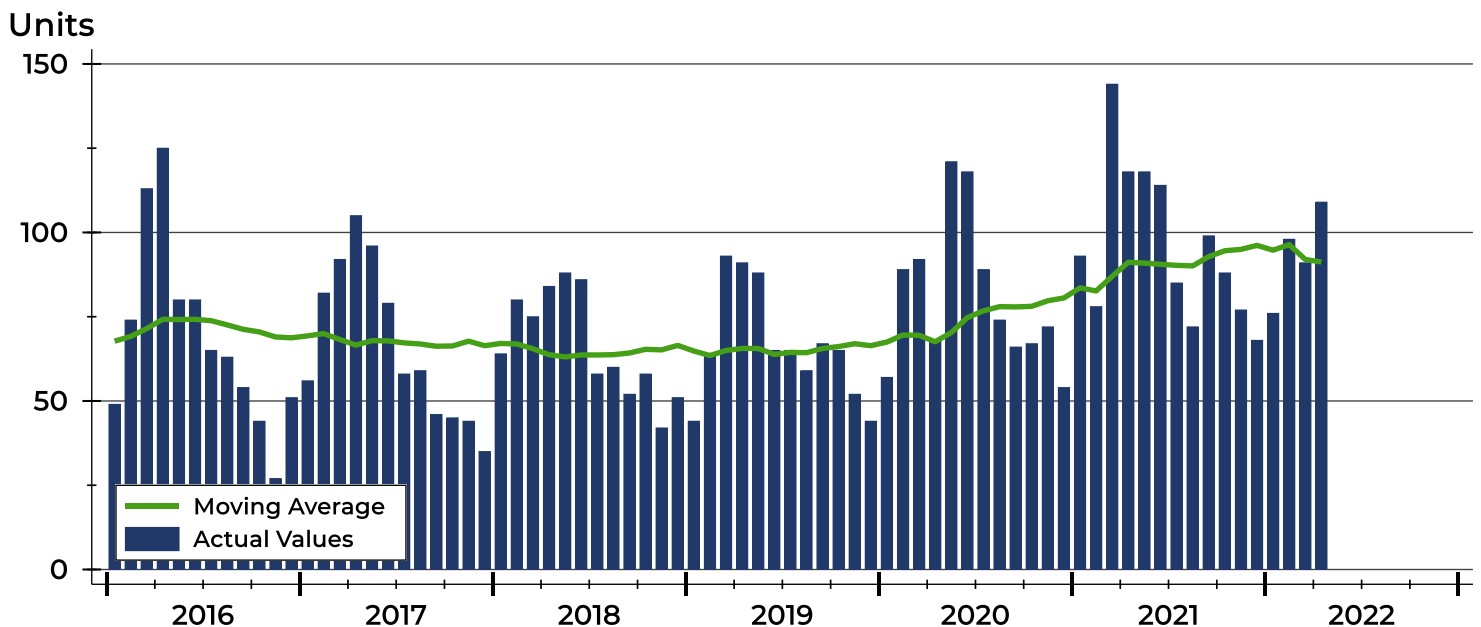


Riley County Contracts Written Analysis

Summary Statistics for Contracts Written		2022	April 2021	Change	Year-to-Date		
		2022	2021		2022	2021	Change
Contracts Written		109	118	-7.6%	374	433	-13.6%
Volume (1,000s)		29,529	27,600	7.0%	91,901	104,731	-12.3%
Average	Sale Price	270,913	233,899	15.8%	245,726	241,873	1.6%
	Days on Market	18	21	-14.3%	25	40	-37.5%
	Percent of Original	99.2%	99.8%	-0.6%	99.4%	98.7%	0.7%
Median	Sale Price	229,000	192,000	19.3%	220,000	210,000	4.8%
	Days on Market	5	6	-16.7%	6	8	-25.0%
	Percent of Original	100.0%	100.0%	0.0%	100.0%	100.0%	0.0%

A total of 109 contracts for sale were written in Riley County during the month of April, down from 118 in 2021. The median list price of these homes was \$229,000, up from \$192,000 the prior year. Half of the homes that went under contract in April were on the market less than 5 days, compared to 6 days in April 2021.

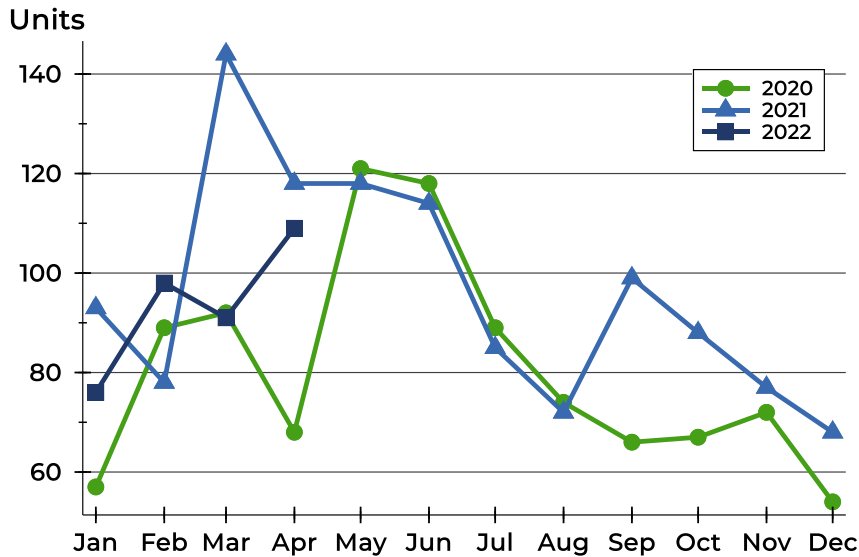
History of Contracts Written





Riley County Contracts Written Analysis

Contracts Written by Month



Month	2020	2021	2022
January	57	93	76
February	89	78	98
March	92	144	91
April	68	118	109
May	121	118	
June	118	114	
July	89	85	
August	74	72	
September	66	99	
October	67	88	
November	72	77	
December	54	68	

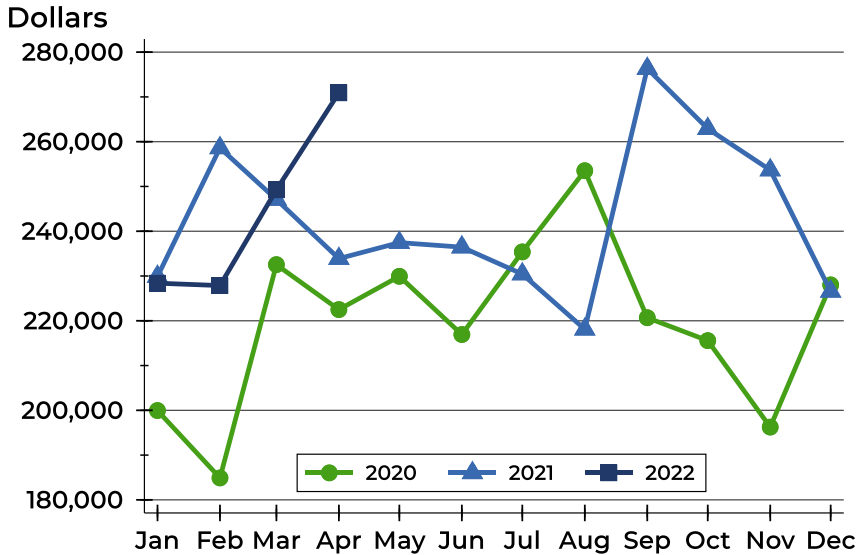
Contracts Written by Price Range

Price Range	Contracts Written		List Price		Days on Market		Price as % of Orig.	
	Number	Percent	Average	Median	Avg.	Med.	Avg.	Med.
Below \$25,000	0	0.0%	N/A	N/A	N/A	N/A	N/A	N/A
\$25,000-\$49,999	0	0.0%	N/A	N/A	N/A	N/A	N/A	N/A
\$50,000-\$99,999	1	0.9%	90,000	90,000	19	19	100.0%	100.0%
\$100,000-\$124,999	3	2.8%	116,600	115,900	28	25	97.6%	99.1%
\$125,000-\$149,999	5	4.6%	138,940	140,000	14	4	96.7%	100.0%
\$150,000-\$174,999	16	14.7%	162,523	162,500	9	4	100.0%	100.0%
\$175,000-\$199,999	20	18.3%	189,130	189,950	7	3	99.6%	100.0%
\$200,000-\$249,999	23	21.1%	228,785	230,000	8	4	99.6%	100.0%
\$250,000-\$299,999	13	11.9%	269,838	265,000	10	4	99.9%	100.0%
\$300,000-\$399,999	13	11.9%	351,685	355,000	30	9	98.3%	100.0%
\$400,000-\$499,999	10	9.2%	442,210	439,900	46	31	97.8%	100.0%
\$500,000-\$749,999	2	1.8%	624,025	624,025	96	96	100.0%	100.0%
\$750,000-\$999,999	2	1.8%	875,000	875,000	36	36	98.7%	98.7%
\$1,000,000 and up	1	0.9%	1,250,000	1,250,000	16	16	96.0%	96.0%



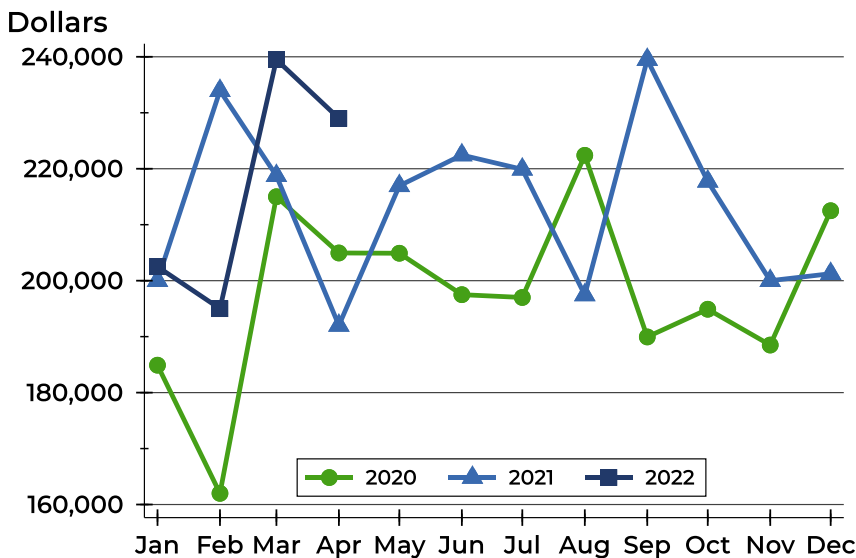
Riley County Contracts Written Analysis

Average Price



Month	2020	2021	2022
January	199,955	229,883	228,403
February	184,907	258,609	227,871
March	232,539	247,086	249,253
April	222,503	233,899	270,913
May	229,933	237,460	
June	216,930	236,450	
July	235,391	230,434	
August	253,520	218,103	
September	220,682	276,326	
October	215,569	262,907	
November	196,256	253,665	
December	228,017	226,567	

Median Price

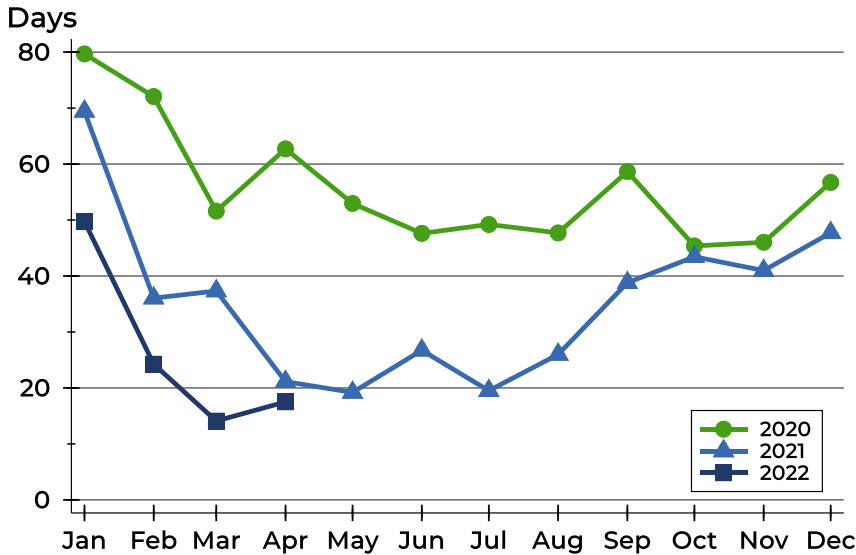


Month	2020	2021	2022
January	184,900	200,000	202,500
February	162,000	233,950	195,000
March	215,000	218,750	239,500
April	204,950	192,000	229,000
May	204,900	216,950	
June	197,500	222,450	
July	197,000	219,900	
August	222,400	197,450	
September	189,950	239,500	
October	194,900	217,750	
November	188,500	200,000	
December	212,500	201,250	



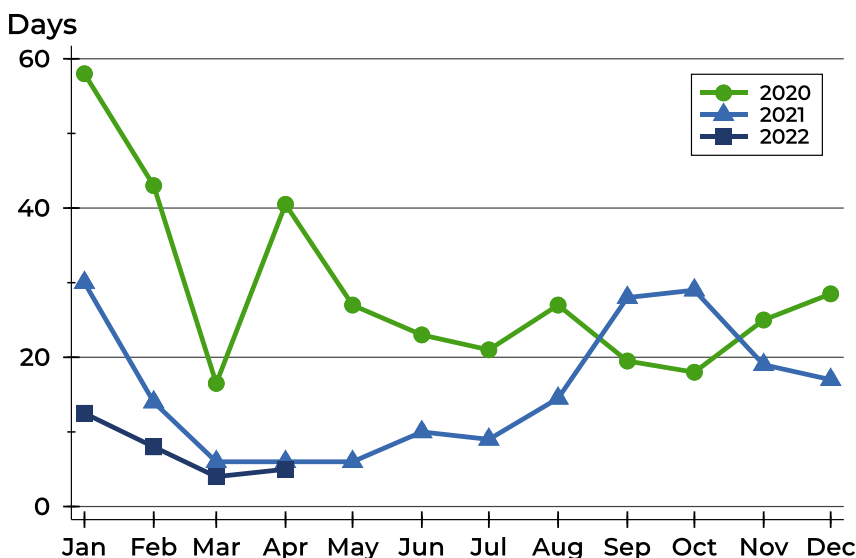
Riley County Contracts Written Analysis

Average DOM



Month	2020	2021	2022
January	80	69	50
February	72	36	24
March	52	37	14
April	63	21	18
May	53	19	
June	48	27	
July	49	20	
August	48	26	
September	59	39	
October	45	43	
November	46	41	
December	57	48	

Median DOM



Month	2020	2021	2022
January	58	30	13
February	43	14	8
March	17	6	4
April	41	6	5
May	27	6	
June	23	10	
July	21	9	
August	27	15	
September	20	28	
October	18	29	
November	25	19	
December	29	17	



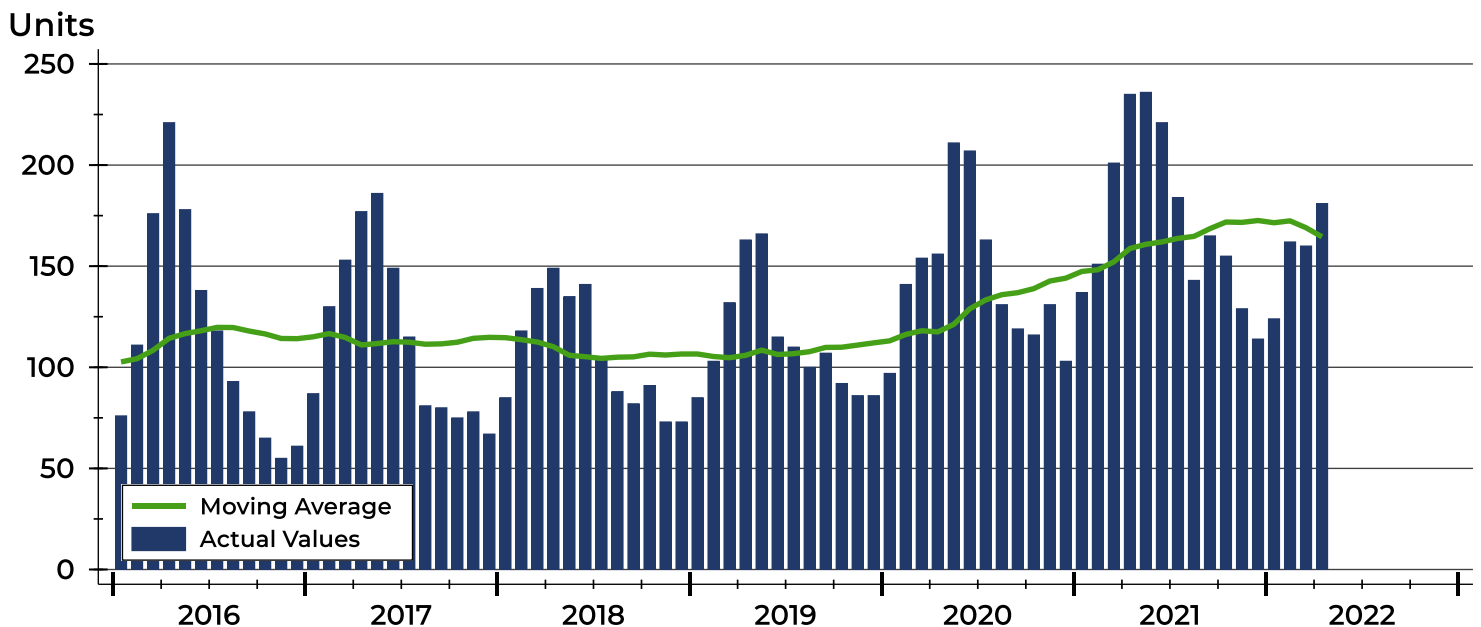
Riley County Pending Contracts Analysis

Summary Statistics for Pending Contracts		2022	End of April 2021	Change
Pending Contracts		181	235	-23.0%
Volume (1,000s)		49,575	56,959	-13.0%
Average	List Price	273,894	242,377	13.0%
	Days on Market	14	29	-51.7%
	Percent of Original	99.6%	99.0%	0.6%
Median	List Price	230,000	219,000	5.0%
	Days on Market	4	7	-42.9%
	Percent of Original	100.0%	100.0%	0.0%

A total of 181 listings in Riley County had contracts pending at the end of April, down from 235 contracts pending at the end of April 2021.

Pending contracts reflect listings with a contract in place at the end of the month. In contrast, contracts written measures the number of listings put under contract during the month.

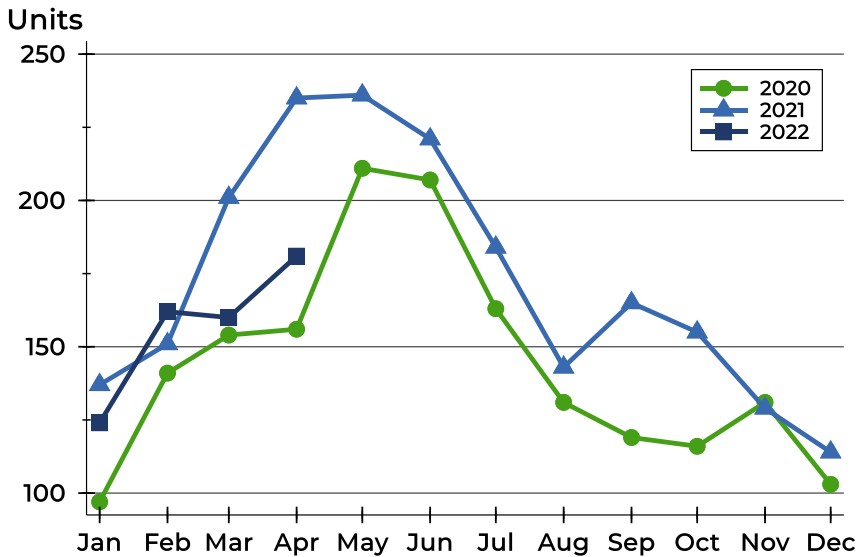
History of Pending Contracts





Riley County Pending Contracts Analysis

Pending Contracts by Month



Month	2020	2021	2022
January	97	137	124
February	141	151	162
March	154	201	160
April	156	235	181
May	211	236	
June	207	221	
July	163	184	
August	131	143	
September	119	165	
October	116	155	
November	131	129	
December	103	114	

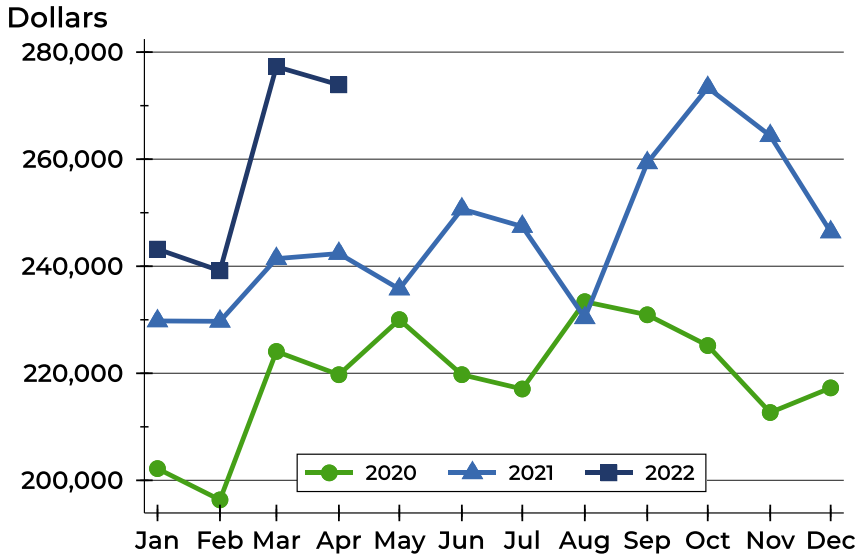
Pending Contracts by Price Range

Price Range	Pending Contracts		List Price		Days on Market		Price as % of Orig.	
	Number	Percent	Average	Median	Avg.	Med.	Avg.	Med.
Below \$25,000	0	0.0%	N/A	N/A	N/A	N/A	N/A	N/A
\$25,000-\$49,999	0	0.0%	N/A	N/A	N/A	N/A	N/A	N/A
\$50,000-\$99,999	2	1.1%	80,000	80,000	12	12	100.0%	100.0%
\$100,000-\$124,999	5	2.8%	116,460	115,900	19	18	98.6%	100.0%
\$125,000-\$149,999	9	5.0%	138,756	140,000	24	4	97.5%	100.0%
\$150,000-\$174,999	23	12.7%	162,820	165,000	13	4	99.9%	100.0%
\$175,000-\$199,999	31	17.1%	188,681	190,000	7	3	99.8%	100.0%
\$200,000-\$249,999	41	22.7%	228,911	230,000	10	4	99.9%	100.0%
\$250,000-\$299,999	24	13.3%	272,263	269,500	5	3	100.0%	100.0%
\$300,000-\$399,999	23	12.7%	340,157	325,000	22	9	99.5%	100.0%
\$400,000-\$499,999	12	6.6%	446,000	449,950	25	15	98.9%	100.0%
\$500,000-\$749,999	6	3.3%	603,408	599,950	45	25	100.0%	100.0%
\$750,000-\$999,999	3	1.7%	849,667	875,000	26	6	99.1%	100.0%
\$1,000,000 and up	2	1.1%	1,362,500	1,362,500	8	8	100.0%	100.0%



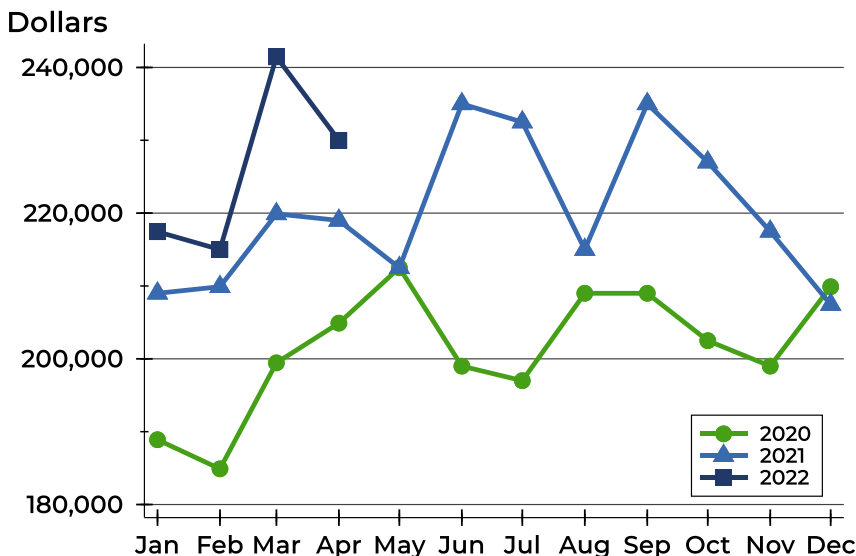
Riley County Pending Contracts Analysis

Average Price



Month	2020	2021	2022
January	202,199	229,781	243,204
February	196,352	229,712	239,149
March	224,078	241,420	277,287
April	219,735	242,377	273,894
May	230,029	235,738	
June	219,742	250,688	
July	217,070	247,424	
August	233,377	230,364	
September	230,927	259,319	
October	225,181	273,363	
November	212,669	264,377	
December	217,276	246,398	

Median Price

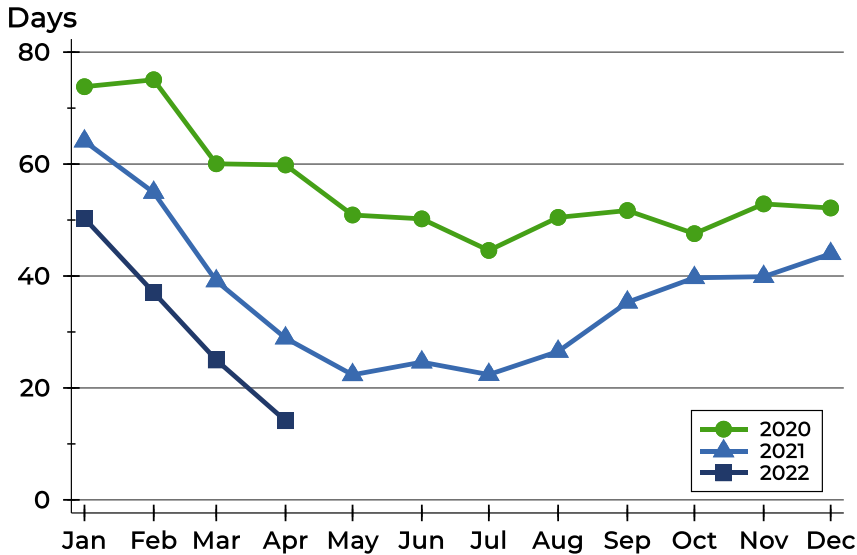


Month	2020	2021	2022
January	188,900	209,000	217,450
February	184,900	209,900	215,000
March	199,450	219,900	241,460
April	204,900	219,000	230,000
May	212,500	212,500	
June	199,000	235,000	
July	197,000	232,500	
August	209,000	215,000	
September	209,000	235,000	
October	202,498	227,000	
November	199,000	217,500	
December	209,900	207,450	



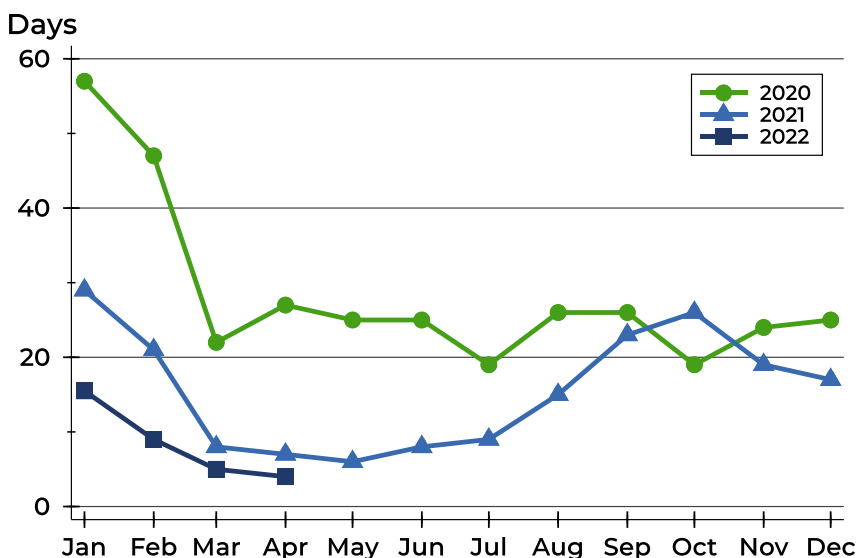
Riley County Pending Contracts Analysis

Average DOM



Month	2020	2021	2022
January	74	64	50
February	75	55	37
March	60	39	25
April	60	29	14
May	51	22	
June	50	25	
July	45	22	
August	50	27	
September	52	35	
October	48	40	
November	53	40	
December	52	44	

Median DOM



Month	2020	2021	2022
January	57	29	16
February	47	21	9
March	22	8	5
April	27	7	4
May	25	6	
June	25	8	
July	19	9	
August	26	15	
September	26	23	
October	19	26	
November	24	19	
December	25	17	