



**July  
2022**

# Flint Hills MLS Statistics



**FLINT HILLS  
ASSOCIATION  
OF REALTORS®**

## Riley County Housing Report



### Market Overview

#### Riley County Home Sales Fell in July

Total home sales in Riley County fell last month to 91 units, compared to 127 units in July 2021. Total sales volume was \$22.9 million, down from a year earlier.

The median sale price in July was \$225,000, down from \$228,000 a year earlier. Homes that sold in July were typically on the market for 6 days and sold for 100.0% of their list prices.

#### Riley County Active Listings Down at End of July

The total number of active listings in Riley County at the end of July was 152 units, down from 191 at the same point in 2021. This represents a 1.7 months' supply of homes available for sale. The median list price of homes on the market at the end of July was \$246,000.

During July, a total of 97 contracts were written up from 85 in July 2021. At the end of the month, there were 159 contracts still pending.

### Report Contents

- Summary Statistics – Page 2
- Closed Listing Analysis – Page 3
- Active Listings Analysis – Page 7
- Months' Supply Analysis – Page 11
- New Listings Analysis – Page 12
- Contracts Written Analysis – Page 15
- Pending Contracts Analysis – Page 19

### Contact Information

Margaret Pendleton, Association Executive  
 Flint Hills Association of REALTORS®  
 205 S. Seth Child Road  
 Manhattan, KS 66502  
 785-776-1203  
[ae@flinthillsrealtors.net](mailto:ae@flinthillsrealtors.net)  
[www.flinthillsrealtors.net](http://www.flinthillsrealtors.net)



**July  
2022**

# Flint Hills MLS Statistics



**FLINT HILLS  
ASSOCIATION  
OF REALTORS®**

## Riley County Summary Statistics

July MLS Statistics Three-year History		Current Month			Year-to-Date		
		2022	2021	2020	2022	2021	2020
<b>Home Sales</b>		<b>91</b>	<b>127</b>	<b>137</b>	<b>594</b>	<b>678</b>	<b>573</b>
Change from prior year		-28.3%	-7.3%	90.3%	-12.4%	18.3%	19.6%
<b>Active Listings</b>		<b>152</b>	<b>191</b>	<b>242</b>	<b>N/A</b>	<b>N/A</b>	<b>N/A</b>
Change from prior year		-20.4%	-21.1%	-34.1%			
<b>Months' Supply</b>		<b>1.7</b>	<b>2.2</b>	<b>3.3</b>	<b>N/A</b>	<b>N/A</b>	<b>N/A</b>
Change from prior year		-22.7%	-33.3%	-43.1%			
<b>New Listings</b>		<b>97</b>	<b>117</b>	<b>111</b>	<b>760</b>	<b>898</b>	<b>792</b>
Change from prior year		-17.1%	5.4%	-9.0%	-15.4%	13.4%	-5.1%
<b>Contracts Written</b>		<b>97</b>	<b>85</b>	<b>89</b>	<b>650</b>	<b>749</b>	<b>634</b>
Change from prior year		14.1%	-4.5%	36.9%	-13.2%	18.1%	24.3%
<b>Pending Contracts</b>		<b>159</b>	<b>184</b>	<b>163</b>	<b>N/A</b>	<b>N/A</b>	<b>N/A</b>
Change from prior year		-13.6%	12.9%	48.2%			
<b>Sales Volume (1,000s)</b>		<b>22,931</b>	<b>30,883</b>	<b>30,187</b>	<b>147,648</b>	<b>156,111</b>	<b>121,197</b>
Change from prior year		-25.7%	2.3%	87.6%	-5.4%	28.8%	18.0%
Average	<b>Sale Price</b>	<b>251,987</b>	<b>243,175</b>	<b>220,343</b>	<b>248,566</b>	<b>230,252</b>	<b>211,513</b>
	Change from prior year	3.6%	10.4%	-1.4%	8.0%	8.9%	-1.4%
	<b>List Price of Actives</b>	<b>304,880</b>	<b>270,021</b>	<b>270,904</b>	<b>N/A</b>	<b>N/A</b>	<b>N/A</b>
	Change from prior year	12.9%	-0.3%	12.4%			
	<b>Days on Market</b>	<b>19</b>	<b>25</b>	<b>50</b>	<b>26</b>	<b>37</b>	<b>62</b>
Change from prior year	-24.0%	-50.0%	-21.9%	-29.7%	-40.3%	-8.8%	
	<b>Percent of List</b>	<b>100.6%</b>	<b>99.9%</b>	<b>98.6%</b>	<b>100.2%</b>	<b>99.4%</b>	<b>97.8%</b>
Change from prior year	0.7%	1.3%	1.2%	0.8%	1.6%	0.4%	
	<b>Percent of Original</b>	<b>100.0%</b>	<b>99.3%</b>	<b>97.0%</b>	<b>99.4%</b>	<b>98.4%</b>	<b>95.7%</b>
Change from prior year	0.7%	2.4%	1.5%	1.0%	2.8%	0.4%	
Median	<b>Sale Price</b>	<b>225,000</b>	<b>228,000</b>	<b>185,000</b>	<b>226,000</b>	<b>205,000</b>	<b>188,500</b>
	Change from prior year	-1.3%	23.2%	-6.6%	10.2%	8.8%	-2.1%
	<b>List Price of Actives</b>	<b>246,000</b>	<b>215,000</b>	<b>199,700</b>	<b>N/A</b>	<b>N/A</b>	<b>N/A</b>
	Change from prior year	14.4%	7.7%	7.4%			
	<b>Days on Market</b>	<b>6</b>	<b>7</b>	<b>22</b>	<b>7</b>	<b>9</b>	<b>33</b>
Change from prior year	-14.3%	-68.2%	-56.0%	-22.2%	-72.7%	-10.8%	
	<b>Percent of List</b>	<b>100.0%</b>	<b>100.0%</b>	<b>99.1%</b>	<b>100.0%</b>	<b>100.0%</b>	<b>98.4%</b>
Change from prior year	0.0%	0.9%	1.0%	0.0%	1.6%	0.3%	
	<b>Percent of Original</b>	<b>100.0%</b>	<b>100.0%</b>	<b>98.1%</b>	<b>100.0%</b>	<b>100.0%</b>	<b>97.4%</b>
Change from prior year	0.0%	1.9%	1.7%	0.0%	2.7%	0.2%	

Note: Year-to-date statistics cannot be calculated for Active Listings, Months' Supply and Pending Contracts.



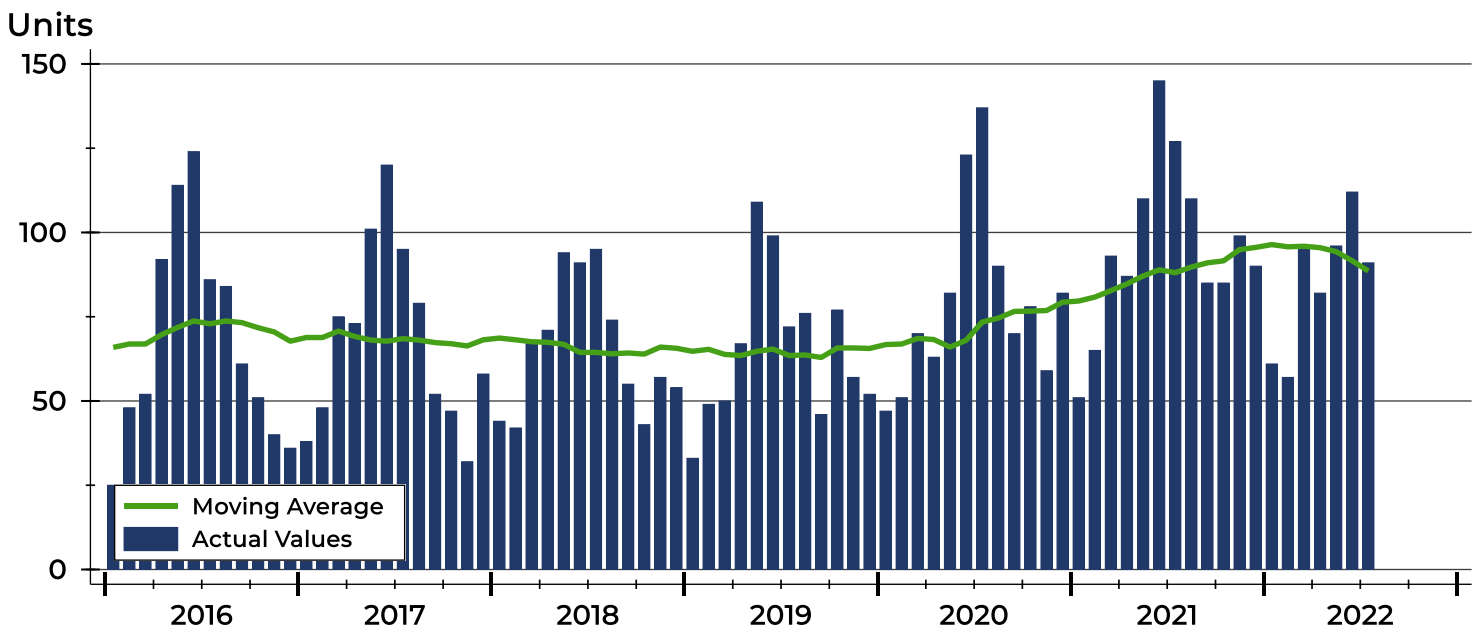
# Riley County Closed Listings Analysis

Summary Statistics for Closed Listings		2022	July 2021	Change	2022	Year-to-Date 2021	Change
Closed Listings		91	127	-28.3%	594	678	-12.4%
Volume (1,000s)		22,931	30,883	-25.7%	147,648	156,111	-5.4%
Months' Supply		1.7	2.2	-22.7%	N/A	N/A	N/A
Average	Sale Price	251,987	243,175	3.6%	248,566	230,252	8.0%
	Days on Market	19	25	-24.0%	26	37	-29.7%
	Percent of List	100.6%	99.9%	0.7%	100.2%	99.4%	0.8%
	Percent of Original	100.0%	99.3%	0.7%	99.4%	98.4%	1.0%
Median	Sale Price	225,000	228,000	-1.3%	226,000	205,000	10.2%
	Days on Market	6	7	-14.3%	7	9	-22.2%
	Percent of List	100.0%	100.0%	0.0%	100.0%	100.0%	0.0%
	Percent of Original	100.0%	100.0%	0.0%	100.0%	100.0%	0.0%

A total of 91 homes sold in Riley County in July, down from 127 units in July 2021. Total sales volume fell to \$22.9 million compared to \$30.9 million in the previous year.

The median sales price in July was \$225,000, down 1.3% compared to the prior year. Median days on market was 6 days, up from 4 days in June, but down from 7 in July 2021.

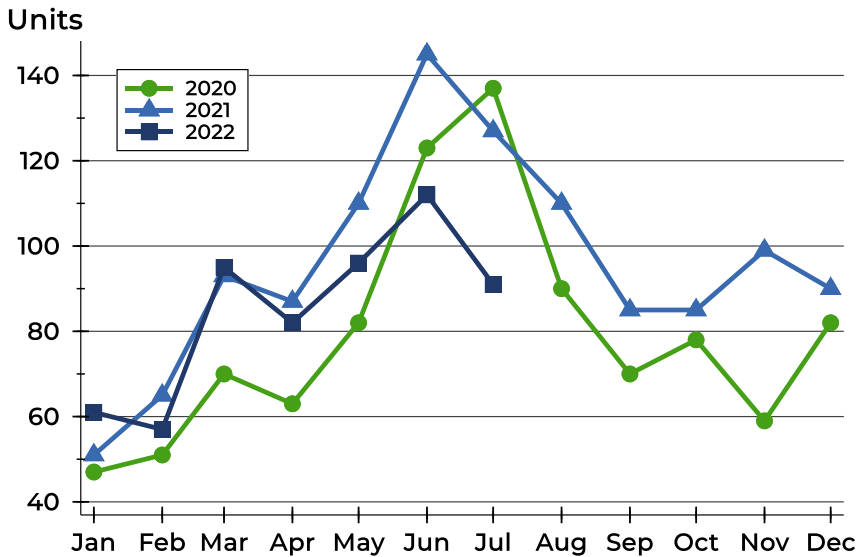
## History of Closed Listings





## Riley County Closed Listings Analysis

### Closed Listings by Month



Month	2020	2021	2022
January	47	51	61
February	51	65	57
March	70	93	95
April	63	87	82
May	82	110	96
June	123	145	112
July	137	127	91
August	90	110	90
September	70	85	90
October	78	85	90
November	59	99	90
December	82	90	90

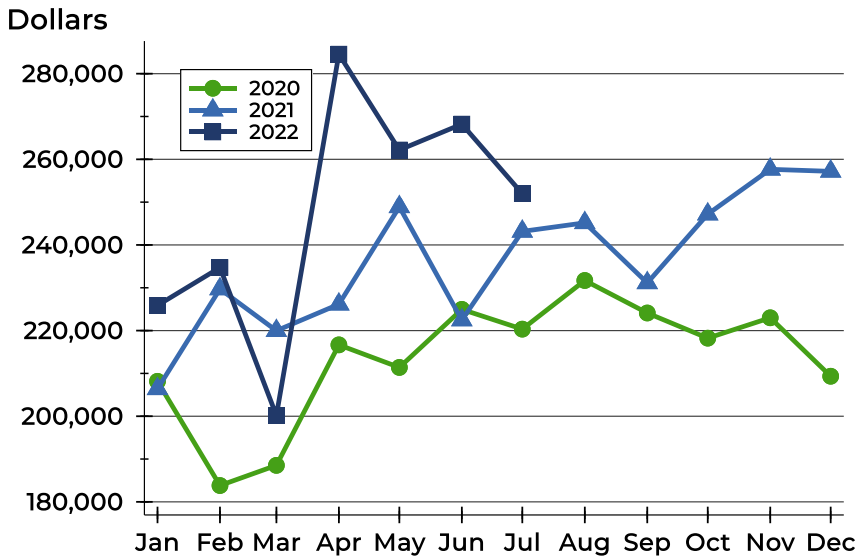
### Closed Listings by Price Range

Price Range	Sales		Months' Supply	Sale Price		Days on Market		Price as % of List		Price as % of Orig.	
	Number	Percent		Average	Median	Avg.	Med.	Avg.	Med.	Avg.	Med.
Below \$25,000	0	0.0%	N/A	N/A	N/A	N/A	N/A	N/A	N/A	N/A	N/A
\$25,000-\$49,999	0	0.0%	N/A	N/A	N/A	N/A	N/A	N/A	N/A	N/A	N/A
\$50,000-\$99,999	1	1.1%	2.7	94,000	94,000	29	29	99.1%	99.1%	99.1%	99.1%
\$100,000-\$124,999	4	4.4%	2.7	110,850	110,450	33	32	102.3%	101.3%	101.2%	99.2%
\$125,000-\$149,999	9	9.9%	1.1	140,378	140,000	20	5	99.6%	100.0%	97.6%	100.0%
\$150,000-\$174,999	10	11.0%	1.2	159,413	160,000	14	7	99.5%	100.0%	98.6%	100.0%
\$175,000-\$199,999	15	16.5%	1.3	188,700	190,500	9	5	101.8%	100.0%	101.5%	100.0%
\$200,000-\$249,999	13	14.3%	1.3	225,086	225,000	8	4	102.8%	101.1%	101.9%	101.1%
\$250,000-\$299,999	12	13.2%	1.2	272,765	272,500	27	8	99.5%	100.0%	98.4%	100.0%
\$300,000-\$399,999	21	23.1%	1.8	337,098	330,000	27	7	100.7%	100.0%	100.9%	100.3%
\$400,000-\$499,999	2	2.2%	3.8	454,500	454,500	5	5	99.4%	99.4%	99.4%	99.4%
\$500,000-\$749,999	3	3.3%	3.9	548,333	530,000	45	26	95.1%	94.6%	94.1%	94.6%
\$750,000-\$999,999	1	1.1%	6.0	873,000	873,000	1	1	99.8%	99.8%	99.8%	99.8%
\$1,000,000 and up	0	0.0%	N/A	N/A	N/A	N/A	N/A	N/A	N/A	N/A	N/A



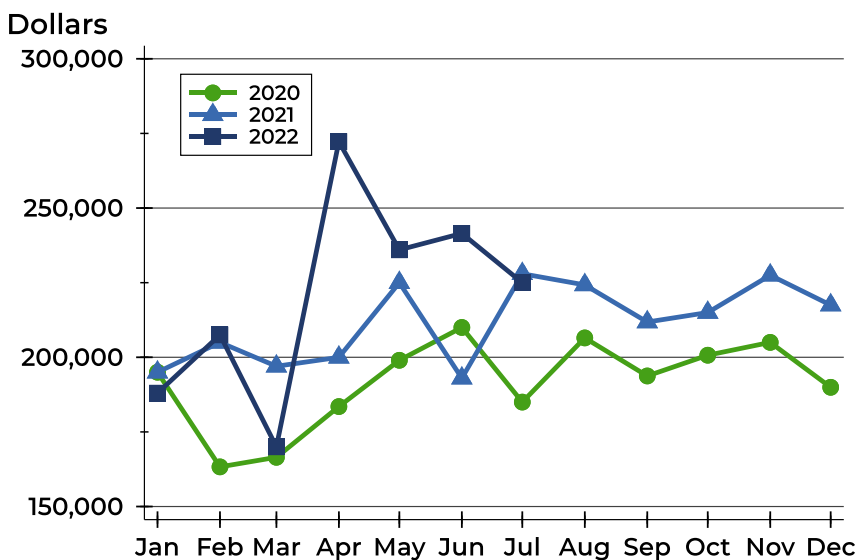
## Riley County Closed Listings Analysis

### Average Price



Month	2020	2021	2022
January	208,157	206,402	225,875
February	183,819	229,715	234,723
March	188,530	219,973	200,163
April	216,671	226,152	284,561
May	211,400	248,898	262,174
June	224,955	222,470	268,226
July	220,343	243,175	251,987
August	231,701	245,172	
September	224,114	231,140	
October	218,236	247,194	
November	222,989	257,661	
December	209,342	257,195	

### Median Price

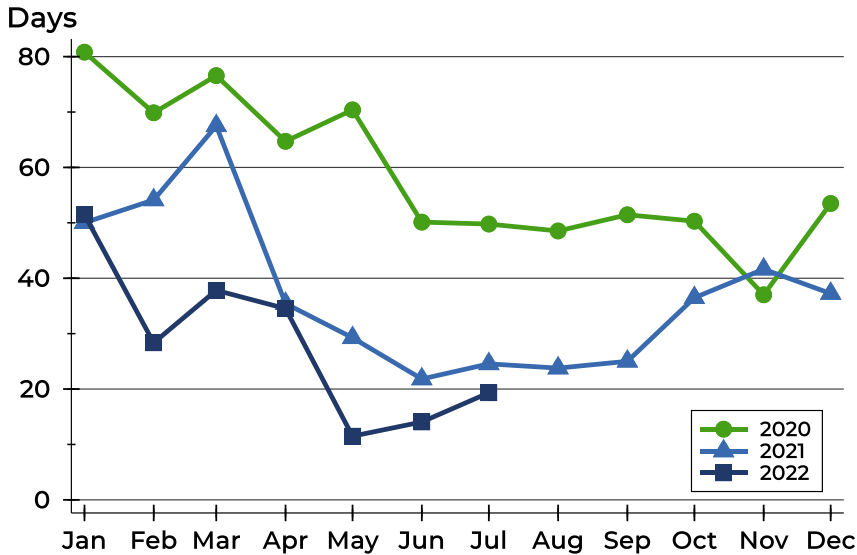


Month	2020	2021	2022
January	195,000	195,000	188,000
February	163,295	205,000	207,500
March	166,500	197,000	170,000
April	183,500	200,000	272,250
May	199,000	225,000	236,000
June	210,000	193,000	241,500
July	185,000	228,000	225,000
August	206,500	224,250	
September	193,750	211,819	
October	200,700	215,000	
November	205,000	227,500	
December	189,950	217,500	



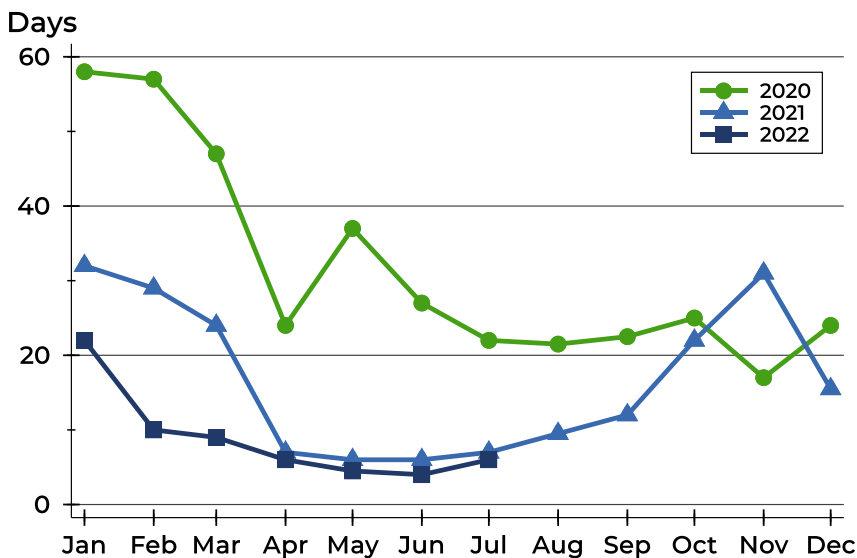
## Riley County Closed Listings Analysis

### Average DOM



Month	2020	2021	2022
January	81	50	51
February	70	54	28
March	77	68	38
April	65	35	35
May	70	29	12
June	50	22	14
July	50	25	19
August	49	24	
September	51	25	
October	50	36	
November	37	42	
December	54	37	

### Median DOM



Month	2020	2021	2022
January	58	32	22
February	57	29	10
March	47	24	9
April	24	7	6
May	37	6	5
June	27	6	4
July	22	7	6
August	22	10	
September	23	12	
October	25	22	
November	17	31	
December	24	16	



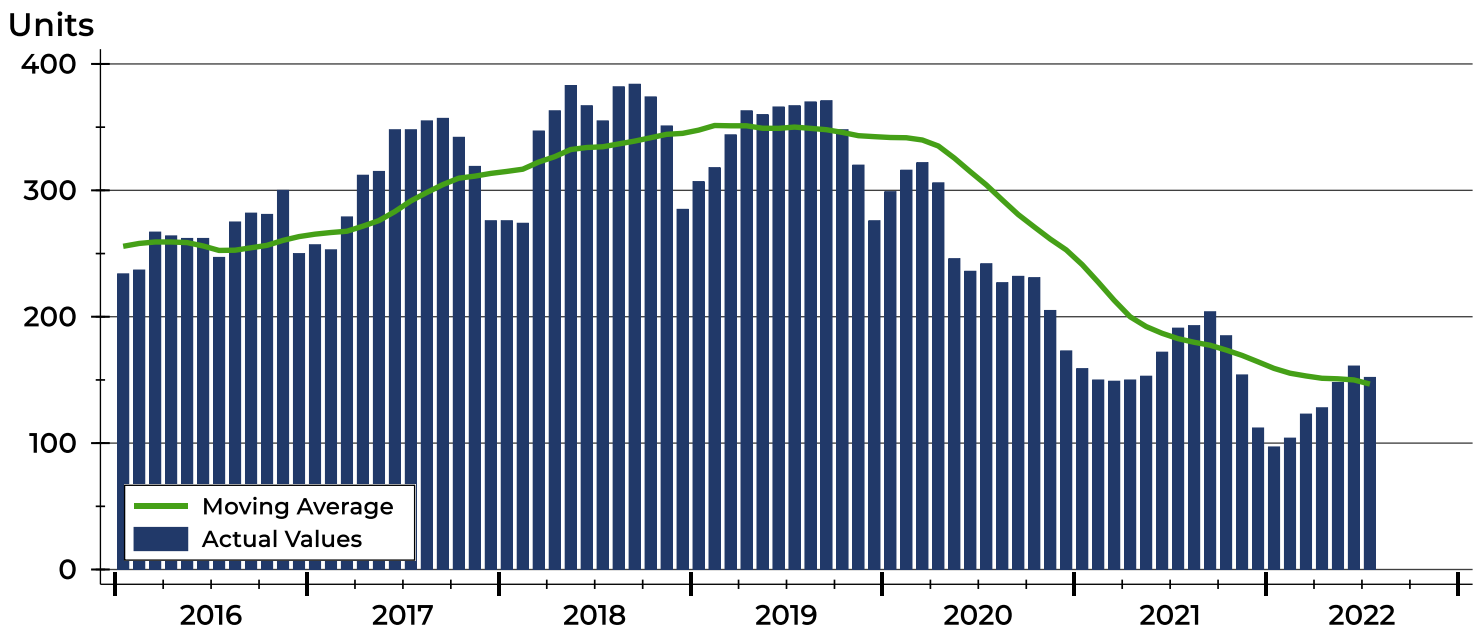
# Riley County Active Listings Analysis

Summary Statistics for Active Listings		2022	End of July 2021	Change
Active Listings		152	191	-20.4%
Volume (1,000s)		46,342	51,574	-10.1%
Months' Supply		1.7	2.2	-22.7%
Average	List Price	304,880	270,021	12.9%
	Days on Market	63	68	-7.4%
	Percent of Original	97.9%	97.8%	0.1%
Median	List Price	246,000	215,000	14.4%
	Days on Market	47	41	14.6%
	Percent of Original	100.0%	100.0%	0.0%

A total of 152 homes were available for sale in Riley County at the end of July. This represents a 1.7 months' supply of active listings.

The median list price of homes on the market at the end of July was \$246,000, up 14.4% from 2021. The typical time on market for active listings was 47 days, up from 41 days a year earlier.

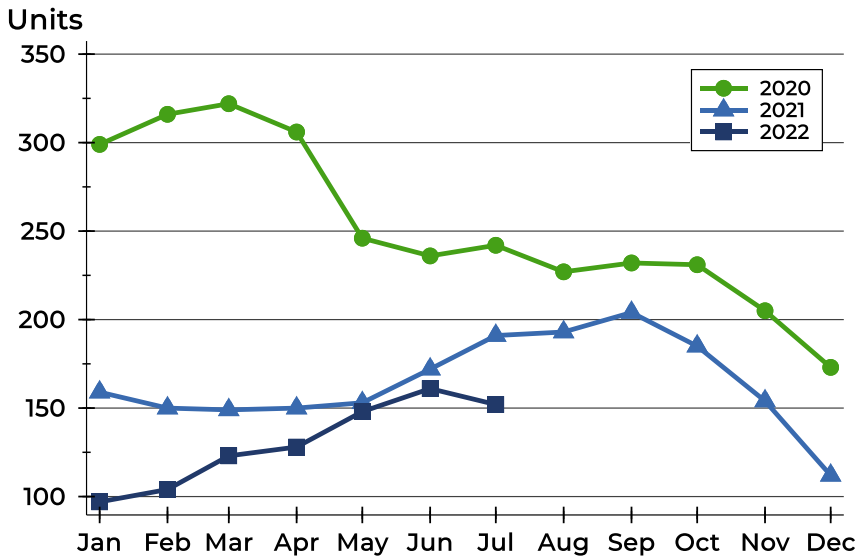
## History of Active Listings





## Riley County Active Listings Analysis

### Active Listings by Month



Month	2020	2021	2022
January	299	159	97
February	316	150	104
March	322	149	123
April	306	150	128
May	246	153	148
June	236	172	161
July	242	191	152
August	227	193	
September	232	204	
October	231	185	
November	205	154	
December	173	112	

### Active Listings by Price Range

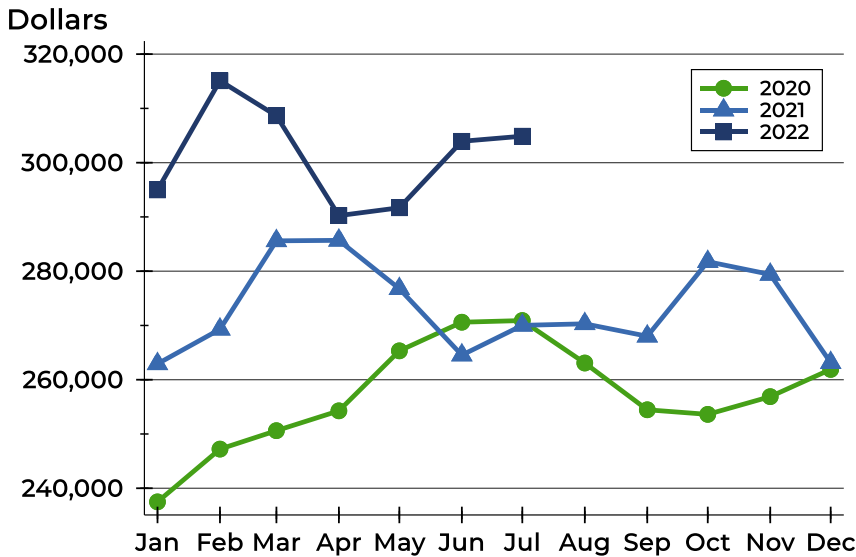
Price Range	Active Listings		Months' Supply	List Price		Days on Market		Price as % of Orig.	
	Number	Percent		Average	Median	Avg.	Med.	Avg.	Med.
Below \$25,000	0	0.0%	N/A	N/A	N/A	N/A	N/A	N/A	N/A
\$25,000-\$49,999	1	0.7%	N/A	44,900	44,900	102	102	81.6%	81.6%
\$50,000-\$99,999	8	5.3%	2.7	84,231	82,475	50	29	98.4%	100.0%
\$100,000-\$124,999	12	7.9%	2.7	113,383	114,700	37	16	95.9%	100.0%
\$125,000-\$149,999	9	5.9%	1.1	136,089	135,000	68	56	99.0%	100.0%
\$150,000-\$174,999	13	8.6%	1.2	164,562	167,000	46	26	99.0%	100.0%
\$175,000-\$199,999	14	9.2%	1.3	186,171	184,950	45	39	97.6%	98.7%
\$200,000-\$249,999	21	13.8%	1.3	231,067	232,000	57	52	98.4%	100.0%
\$250,000-\$299,999	15	9.9%	1.2	275,480	269,900	50	46	96.6%	98.6%
\$300,000-\$399,999	28	18.4%	1.8	348,839	350,000	63	42	98.6%	100.0%
\$400,000-\$499,999	15	9.9%	3.8	451,341	454,900	104	63	98.7%	100.0%
\$500,000-\$749,999	10	6.6%	3.9	621,070	630,750	52	56	99.5%	100.0%
\$750,000-\$999,999	4	2.6%	6.0	914,750	922,000	130	153	93.1%	96.2%
\$1,000,000 and up	2	1.3%	N/A	1,450,000	1,450,000	212	212	97.2%	97.2%





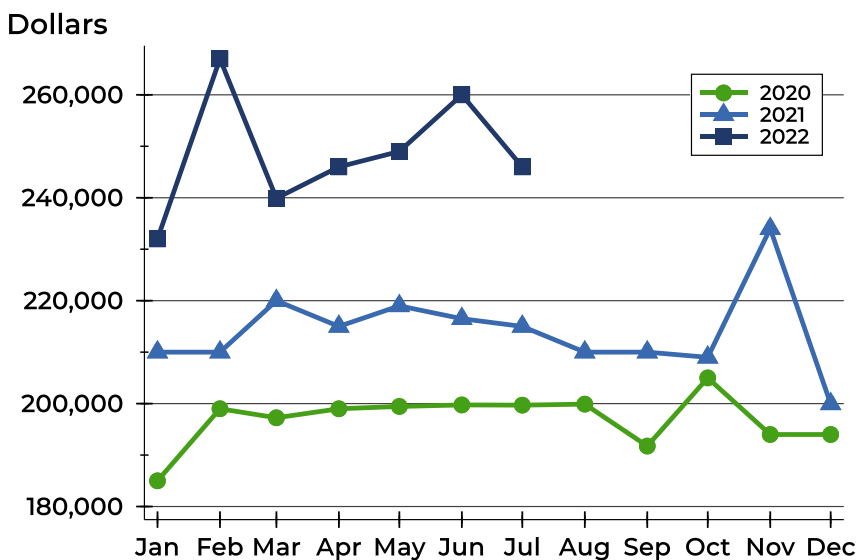
## Riley County Active Listings Analysis

### Average Price



Month	2020	2021	2022
January	237,490	262,929	294,980
February	247,217	269,299	315,098
March	250,613	285,597	308,649
April	254,270	285,687	290,244
May	265,322	276,770	291,693
June	270,600	264,539	303,941
July	270,904	270,021	304,880
August	263,083	270,304	
September	254,462	268,017	
October	253,619	281,756	
November	256,881	279,402	
December	261,905	263,144	

### Median Price

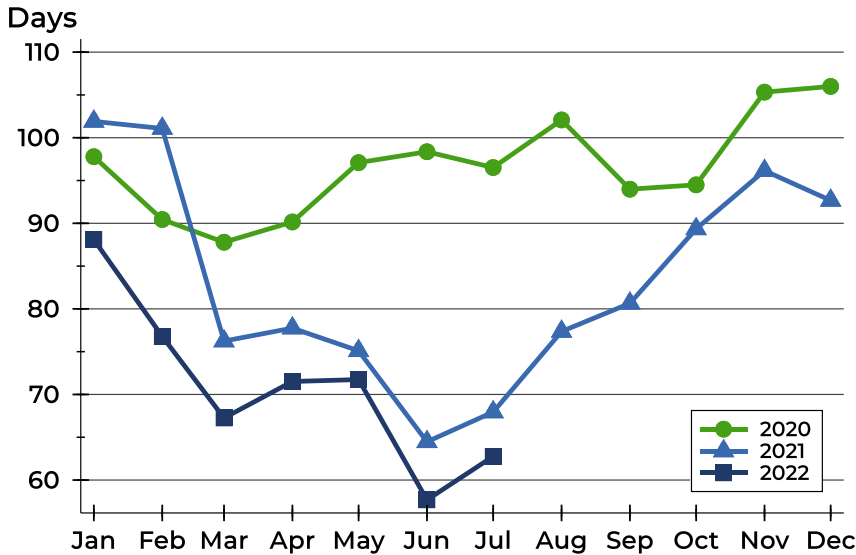


Month	2020	2021	2022
January	185,000	210,000	232,000
February	199,000	210,000	267,000
March	197,245	220,000	239,900
April	199,000	215,000	246,000
May	199,450	219,000	249,000
June	199,748	216,500	260,000
July	199,700	215,000	246,000
August	199,900	210,000	
September	191,750	210,000	
October	205,000	209,000	
November	194,000	234,000	
December	194,000	199,950	



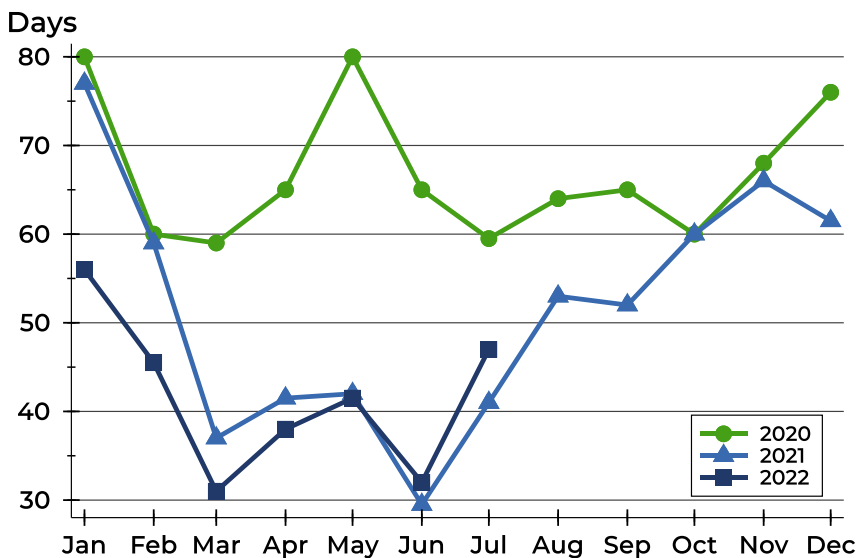
## Riley County Active Listings Analysis

### Average DOM



Month	2020	2021	2022
January	98	102	<b>88</b>
February	90	101	<b>77</b>
March	88	76	<b>67</b>
April	90	78	<b>72</b>
May	97	75	<b>72</b>
June	98	64	<b>58</b>
July	97	68	<b>63</b>
August	102	77	
September	94	81	
October	94	89	
November	105	96	
December	106	93	

### Median DOM

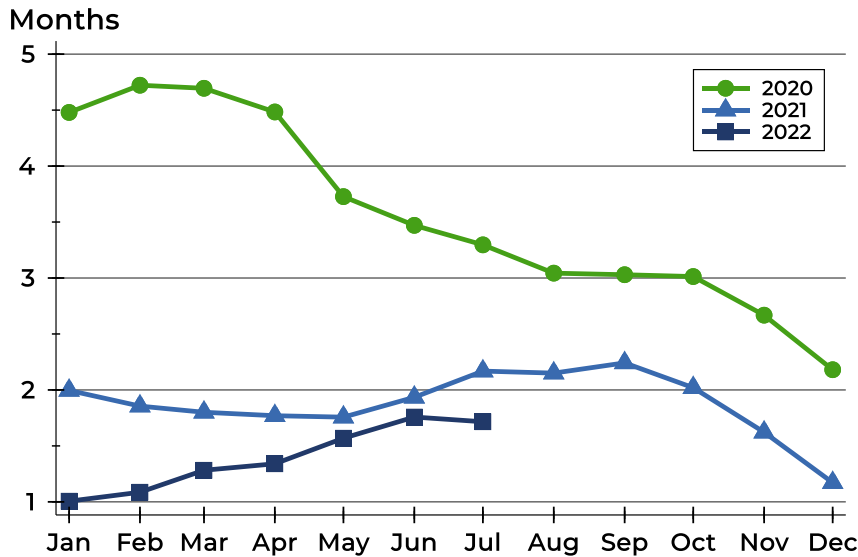


Month	2020	2021	2022
January	80	77	<b>56</b>
February	60	59	<b>46</b>
March	59	37	<b>31</b>
April	65	42	<b>38</b>
May	80	42	<b>42</b>
June	65	30	<b>32</b>
July	60	41	<b>47</b>
August	64	53	
September	65	52	
October	60	60	
November	68	66	
December	76	62	



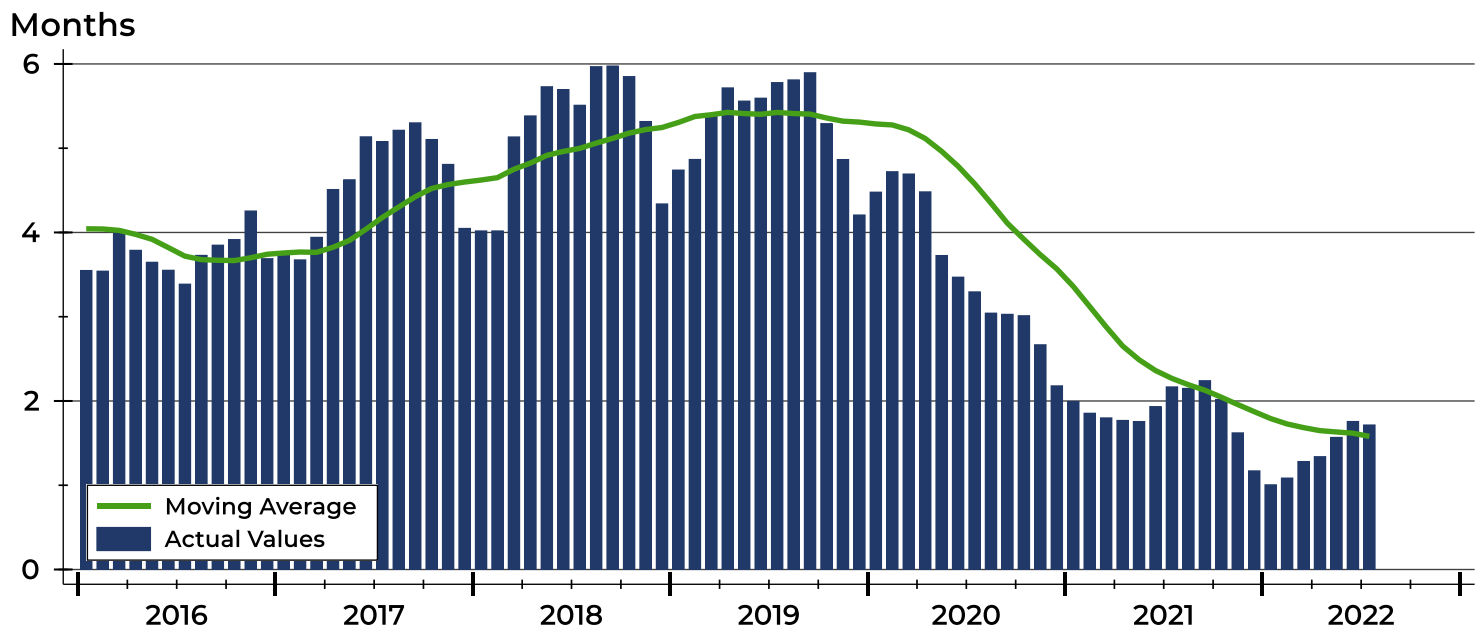
## Riley County Months' Supply Analysis

### Months' Supply by Month



Month	2020	2021	2022
January	4.5	2.0	1.0
February	4.7	1.9	1.1
March	4.7	1.8	1.3
April	4.5	1.8	1.3
May	3.7	1.8	1.6
June	3.5	1.9	1.8
July	3.3	2.2	1.7
August	3.0	2.2	
September	3.0	2.2	
October	3.0	2.0	
November	2.7	1.6	
December	2.2	1.2	

### History of Month's Supply





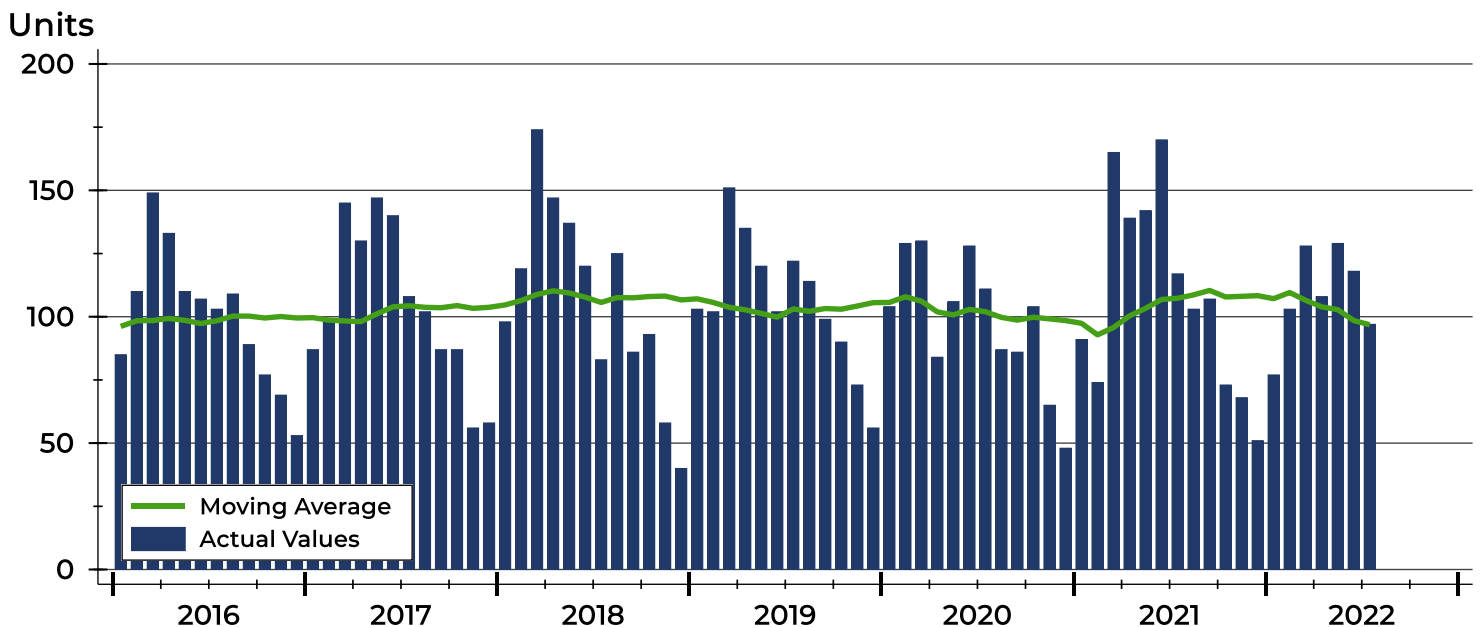
# Riley County New Listings Analysis

Summary Statistics for New Listings		2022	July 2021	Change
Current Month	New Listings	97	117	-17.1%
	Volume (1,000s)	23,808	28,115	-15.3%
	Average List Price	245,439	240,298	2.1%
	Median List Price	219,500	209,000	5.0%
Year-to-Date	New Listings	760	898	-15.4%
	Volume (1,000s)	198,129	215,508	-8.1%
	Average List Price	260,696	239,986	8.6%
	Median List Price	235,000	215,000	9.3%

A total of 97 new listings were added in Riley County during July, down 17.1% from the same month in 2021. Year-to-date Riley County has seen 760 new listings.

The median list price of these homes was \$219,500 up from \$209,000 in 2021.

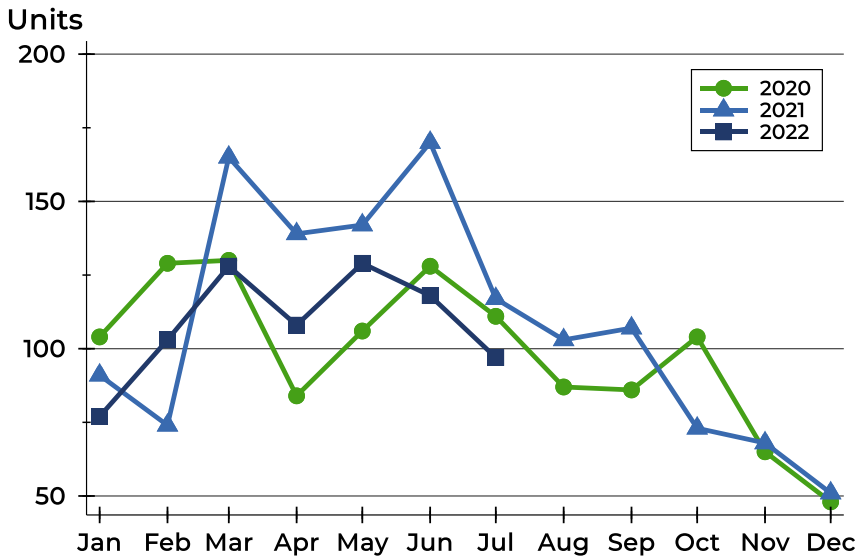
## History of New Listings





## Riley County New Listings Analysis

### New Listings by Month



Month	2020	2021	2022
January	104	91	77
February	129	74	103
March	130	165	128
April	84	139	108
May	106	142	129
June	128	170	118
July	111	117	97
August	87	103	
September	86	107	
October	104	73	
November	65	68	
December	48	51	

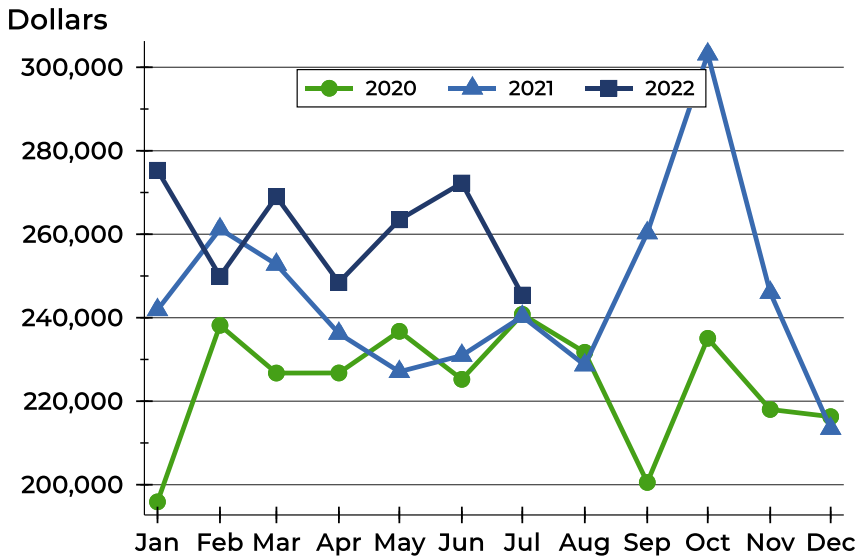
### New Listings by Price Range

Price Range	New Listings		List Price		Days on Market		Price as % of Orig.	
	Number	Percent	Average	Median	Avg.	Med.	Avg.	Med.
Below \$25,000	0	0.0%	N/A	N/A	N/A	N/A	N/A	N/A
\$25,000-\$49,999	0	0.0%	N/A	N/A	N/A	N/A	N/A	N/A
\$50,000-\$99,999	6	6.2%	73,825	74,975	15	13	99.0%	100.0%
\$100,000-\$124,999	4	4.1%	110,625	110,000	15	11	98.6%	100.0%
\$125,000-\$149,999	1	1.0%	149,900	149,900	18	18	100.0%	100.0%
\$150,000-\$174,999	18	18.6%	161,411	164,500	10	7	99.6%	100.0%
\$175,000-\$199,999	16	16.5%	188,050	188,975	8	7	99.3%	100.0%
\$200,000-\$249,999	14	14.4%	225,357	225,000	10	10	99.4%	100.0%
\$250,000-\$299,999	12	12.4%	269,442	267,000	10	7	99.8%	100.0%
\$300,000-\$399,999	18	18.6%	337,656	327,450	13	12	99.8%	100.0%
\$400,000-\$499,999	5	5.2%	446,180	440,000	15	5	99.7%	100.0%
\$500,000-\$749,999	2	2.1%	637,500	637,500	20	20	100.0%	100.0%
\$750,000-\$999,999	1	1.0%	886,000	886,000	10	10	100.0%	100.0%
\$1,000,000 and up	0	0.0%	N/A	N/A	N/A	N/A	N/A	N/A



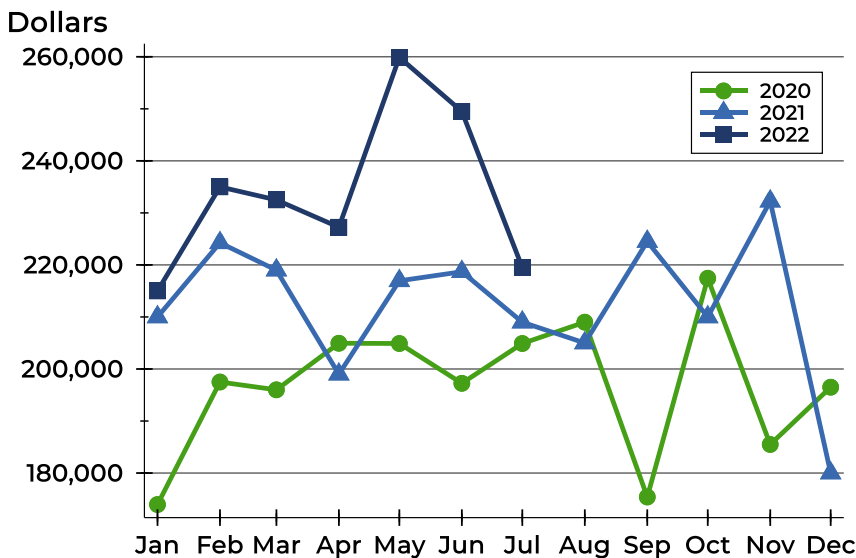
## Riley County New Listings Analysis

### Average Price



Month	2020	2021	2022
January	195,887	241,888	275,331
February	238,191	261,254	249,932
March	226,747	252,772	268,988
April	226,764	236,225	248,440
May	236,745	227,067	263,468
June	225,242	230,952	272,277
July	240,816	240,298	245,439
August	231,720	228,658	
September	200,543	260,308	
October	235,066	303,145	
November	218,030	246,026	
December	216,300	213,448	

### Median Price



Month	2020	2021	2022
January	173,950	210,000	215,000
February	197,500	224,250	235,000
March	196,000	219,000	232,500
April	204,948	199,000	227,250
May	204,900	216,950	259,900
June	197,250	218,700	249,500
July	204,900	209,000	219,500
August	209,000	205,000	
September	175,400	224,500	
October	217,450	209,999	
November	185,500	232,250	
December	196,500	180,000	



# Riley County Contracts Written Analysis

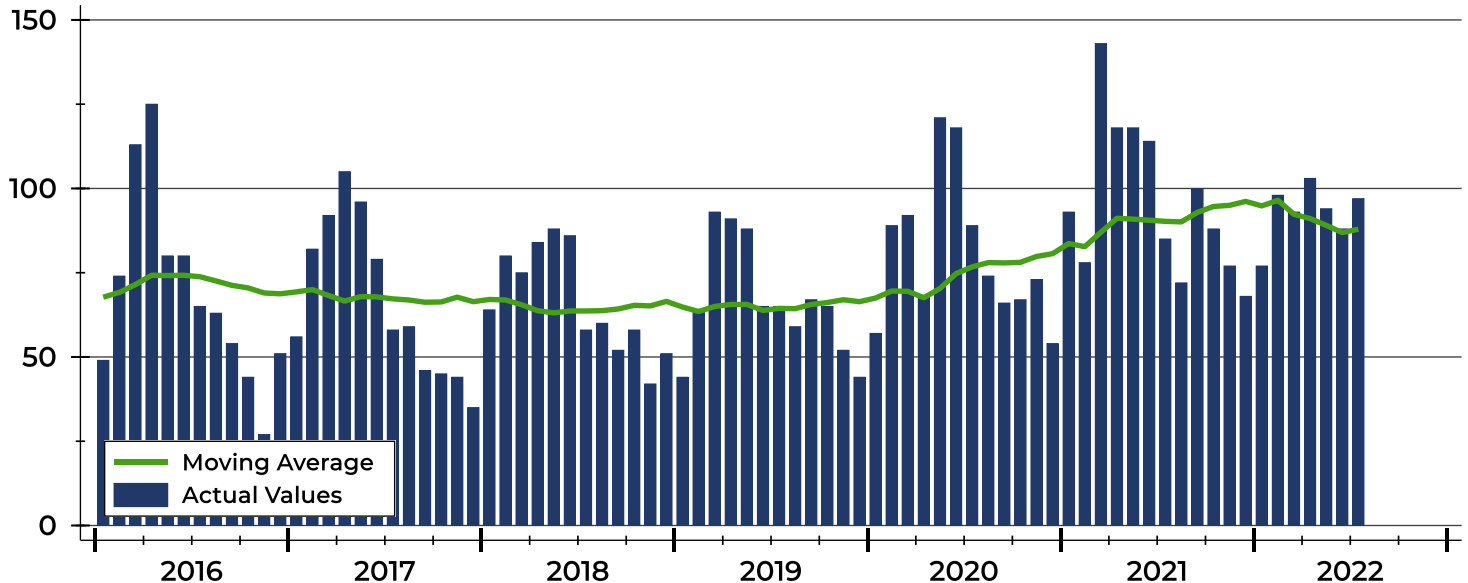
Summary Statistics for Contracts Written		2022	July 2021	Change	Year-to-Date		
		2022	2021		2022	2021	Change
Contracts Written		97	85	14.1%	650	749	-13.2%
Volume (1,000s)		24,592	19,587	25.6%	162,204	177,819	-8.8%
Average	Sale Price	253,521	230,434	10.0%	249,544	237,408	5.1%
	Days on Market	21	20	5.0%	22	32	-31.3%
	Percent of Original	98.3%	97.9%	0.4%	99.6%	98.8%	0.8%
Median	Sale Price	240,000	219,900	9.1%	226,500	215,000	5.3%
	Days on Market	9	9	0.0%	7	8	-12.5%
	Percent of Original	100.0%	99.7%	0.3%	100.0%	100.0%	0.0%

A total of 97 contracts for sale were written in Riley County during the month of July, up from 85 in 2021. The median list price of these homes was \$240,000, up from \$219,900 the prior year.

Half of the homes that went under contract in July were on the market less than 9 days, compared to 9 days in July 2021.

## History of Contracts Written

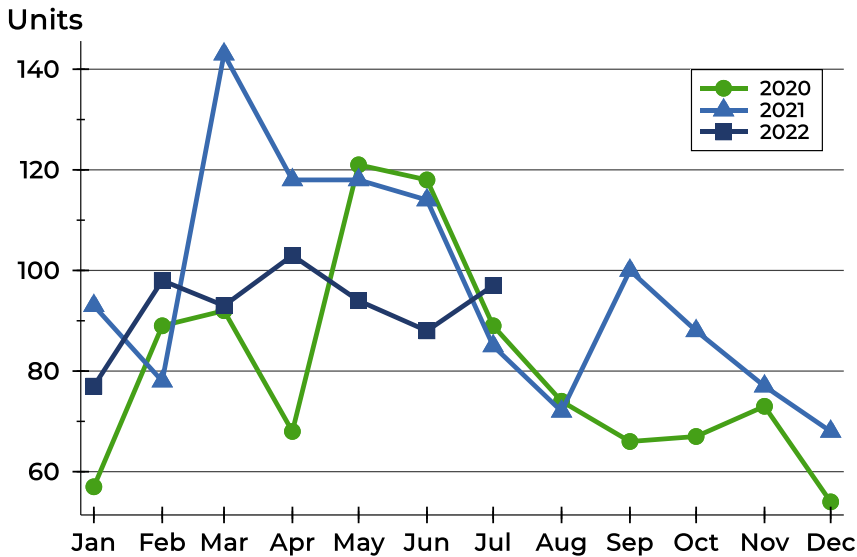
Units





## Riley County Contracts Written Analysis

### Contracts Written by Month



Month	2020	2021	2022
January	57	93	77
February	89	78	98
March	92	143	93
April	68	118	103
May	121	118	94
June	118	114	88
July	89	85	97
August	74	72	
September	66	100	
October	67	88	
November	73	77	
December	54	68	

### Contracts Written by Price Range

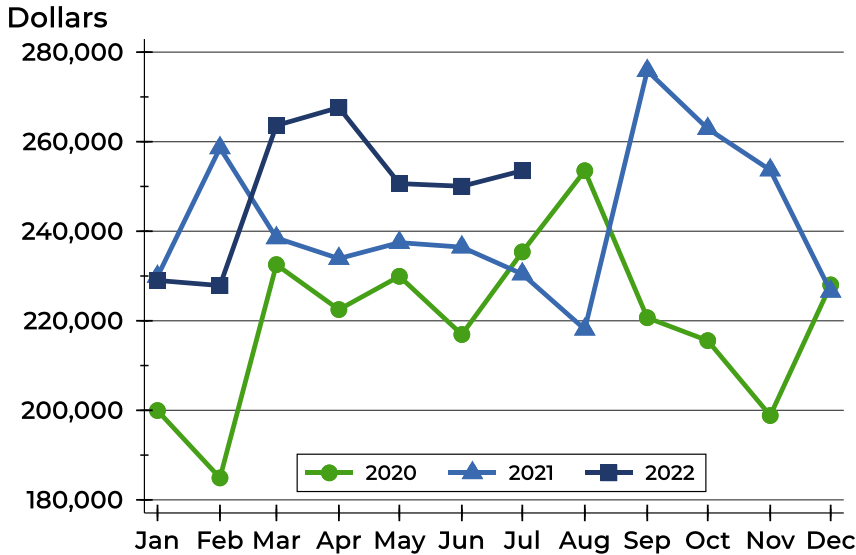
Price Range	Contracts Written		List Price		Days on Market		Price as % of Orig.	
	Number	Percent	Average	Median	Avg.	Med.	Avg.	Med.
Below \$25,000	0	0.0%	N/A	N/A	N/A	N/A	N/A	N/A
\$25,000-\$49,999	0	0.0%	N/A	N/A	N/A	N/A	N/A	N/A
\$50,000-\$99,999	4	4.1%	79,750	80,500	28	15	94.4%	100.0%
\$100,000-\$124,999	0	0.0%	N/A	N/A	N/A	N/A	N/A	N/A
\$125,000-\$149,999	2	2.1%	132,500	132,500	63	63	92.0%	92.0%
\$150,000-\$174,999	16	16.5%	160,119	160,000	15	8	97.3%	100.0%
\$175,000-\$199,999	16	16.5%	191,600	194,700	11	7	99.7%	100.0%
\$200,000-\$249,999	13	13.4%	227,792	224,900	24	12	99.2%	100.0%
\$250,000-\$299,999	22	22.7%	269,600	269,450	22	9	98.4%	100.0%
\$300,000-\$399,999	16	16.5%	341,484	331,950	22	13	98.9%	100.0%
\$400,000-\$499,999	5	5.2%	438,780	440,000	13	5	99.8%	100.0%
\$500,000-\$749,999	3	3.1%	609,967	565,000	54	55	93.7%	98.3%
\$750,000-\$999,999	0	0.0%	N/A	N/A	N/A	N/A	N/A	N/A
\$1,000,000 and up	0	0.0%	N/A	N/A	N/A	N/A	N/A	N/A





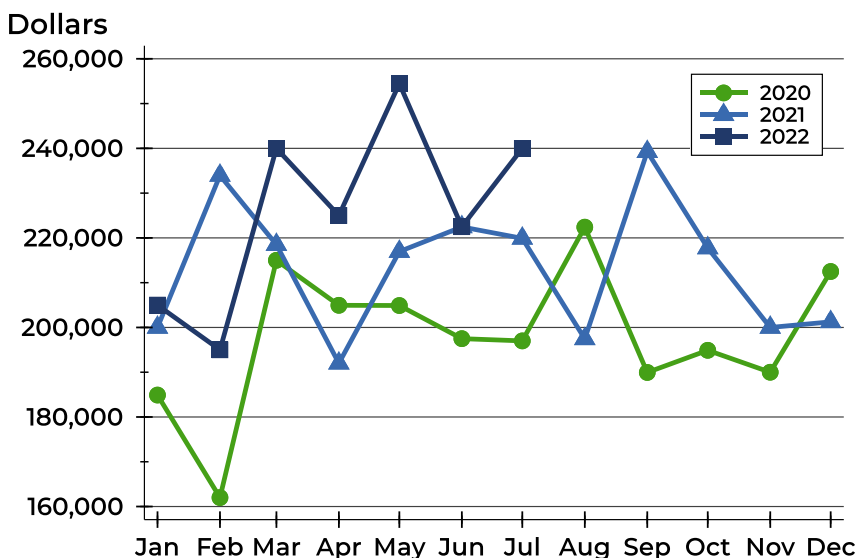
## Riley County Contracts Written Analysis

### Average Price



Month	2020	2021	2022
January	199,955	229,883	<b>229,008</b>
February	184,907	258,609	<b>227,871</b>
March	232,539	238,500	<b>263,623</b>
April	222,503	233,899	<b>267,629</b>
May	229,933	237,460	<b>250,639</b>
June	216,930	236,450	<b>250,051</b>
July	235,391	230,434	<b>253,521</b>
August	253,520	218,103	
September	220,682	275,842	
October	215,569	262,907	
November	198,841	253,665	
December	228,017	226,567	

### Median Price

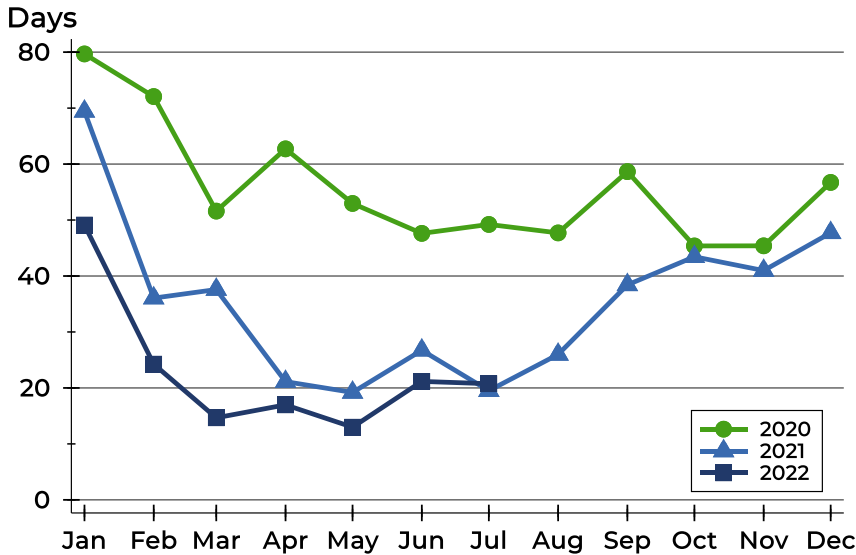


Month	2020	2021	2022
January	184,900	200,000	<b>205,000</b>
February	162,000	233,950	<b>195,000</b>
March	215,000	218,500	<b>240,000</b>
April	204,950	192,000	<b>225,000</b>
May	204,900	216,950	<b>254,450</b>
June	197,500	222,450	<b>222,500</b>
July	197,000	219,900	<b>240,000</b>
August	222,400	197,450	
September	189,950	239,250	
October	194,900	217,750	
November	190,000	200,000	
December	212,500	201,250	



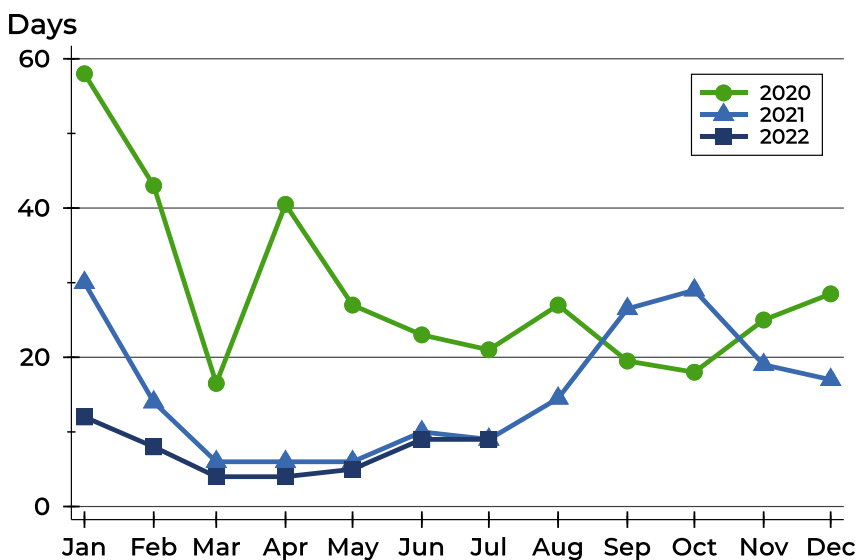
## Riley County Contracts Written Analysis

### Average DOM



Month	2020	2021	2022
January	80	69	49
February	72	36	24
March	52	38	15
April	63	21	17
May	53	19	13
June	48	27	21
July	49	20	21
August	48	26	
September	59	38	
October	45	43	
November	45	41	
December	57	48	

### Median DOM



Month	2020	2021	2022
January	58	30	12
February	43	14	8
March	17	6	4
April	41	6	4
May	27	6	5
June	23	10	9
July	21	9	9
August	27	15	
September	20	27	
October	18	29	
November	25	19	
December	29	17	



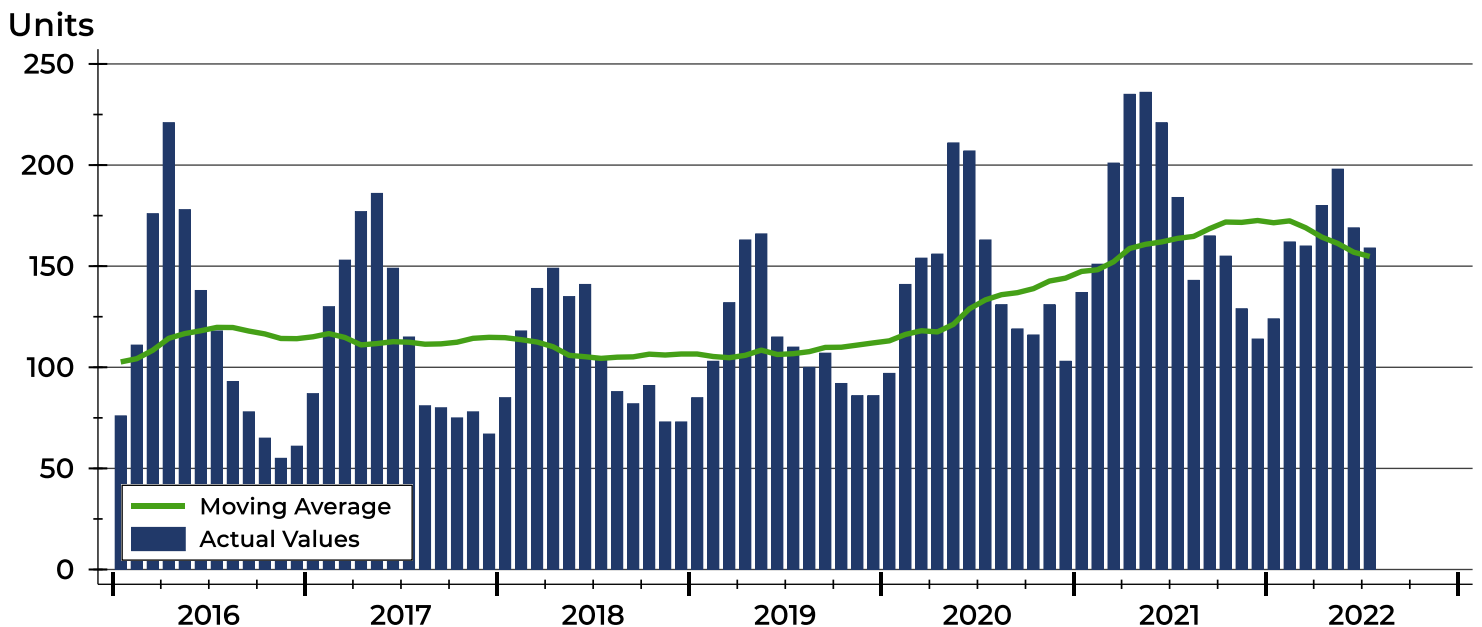
# Riley County Pending Contracts Analysis

Summary Statistics for Pending Contracts		2022	End of July 2021	Change
Pending Contracts		159	184	-13.6%
Volume (1,000s)		40,325	45,526	-11.4%
Average	List Price	253,615	247,424	2.5%
	Days on Market	21	22	-4.5%
	Percent of Original	98.8%	99.1%	-0.3%
Median	List Price	229,900	232,500	-1.1%
	Days on Market	9	9	0.0%
	Percent of Original	100.0%	100.0%	0.0%

A total of 159 listings in Riley County had contracts pending at the end of July, down from 184 contracts pending at the end of July 2021.

Pending contracts reflect listings with a contract in place at the end of the month. In contrast, contracts written measures the number of listings put under contract during the month.

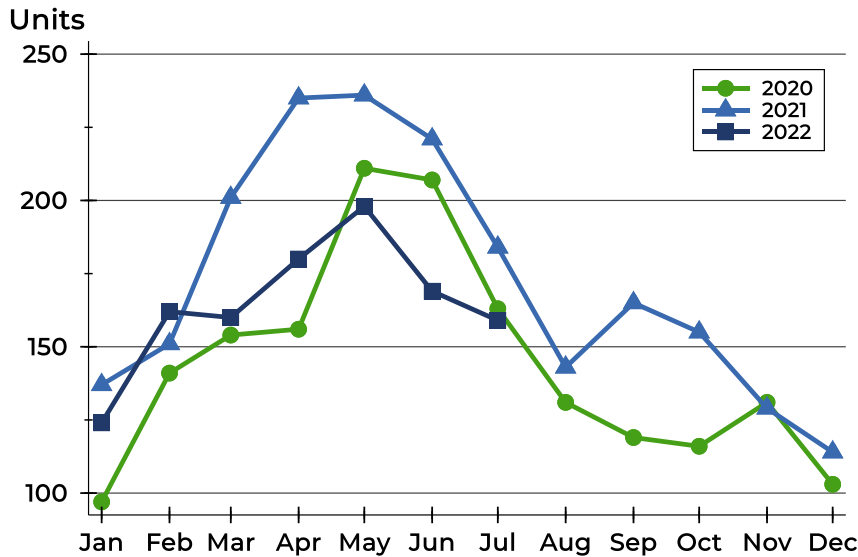
## History of Pending Contracts





## Riley County Pending Contracts Analysis

### Pending Contracts by Month



Month	2020	2021	2022
January	97	137	124
February	141	151	162
March	154	201	160
April	156	235	180
May	211	236	198
June	207	221	169
July	163	184	159
August	131	143	
September	119	165	
October	116	155	
November	131	129	
December	103	114	

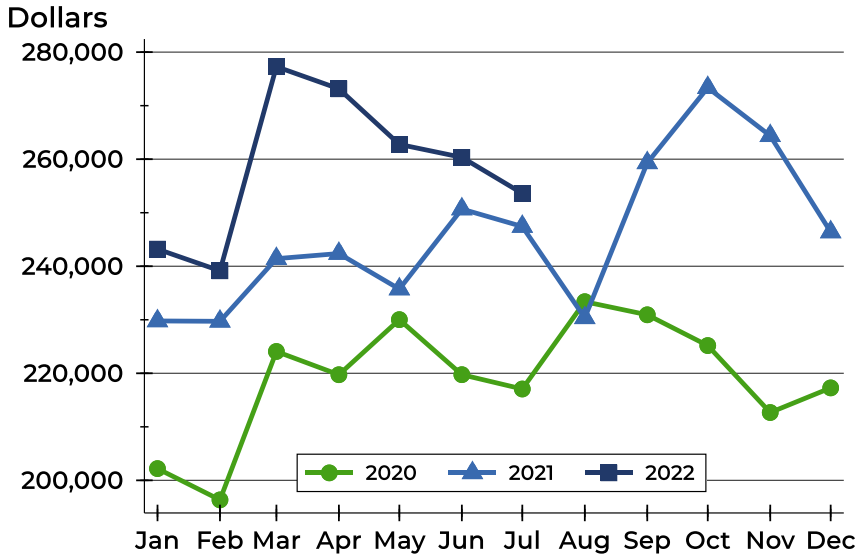
### Pending Contracts by Price Range

Price Range	Pending Contracts		List Price		Days on Market		Price as % of Orig.	
	Number	Percent	Average	Median	Avg.	Med.	Avg.	Med.
Below \$25,000	0	0.0%	N/A	N/A	N/A	N/A	N/A	N/A
\$25,000-\$49,999	1	0.6%	42,000	42,000	7	7	100.0%	100.0%
\$50,000-\$99,999	6	3.8%	82,233	80,500	33	29	92.6%	97.4%
\$100,000-\$124,999	2	1.3%	115,000	115,000	15	15	97.9%	97.9%
\$125,000-\$149,999	4	2.5%	133,550	129,850	44	21	98.4%	100.0%
\$150,000-\$174,999	24	15.1%	160,375	160,000	15	8	98.4%	100.0%
\$175,000-\$199,999	22	13.8%	190,545	192,200	19	7	99.3%	100.0%
\$200,000-\$249,999	28	17.6%	224,316	222,000	19	9	99.3%	100.0%
\$250,000-\$299,999	31	19.5%	271,523	269,900	17	8	99.3%	100.0%
\$300,000-\$399,999	27	17.0%	342,891	339,900	24	11	98.3%	100.0%
\$400,000-\$499,999	9	5.7%	442,622	440,000	21	7	99.9%	100.0%
\$500,000-\$749,999	5	3.1%	608,880	565,000	39	48	99.7%	100.0%
\$750,000-\$999,999	0	0.0%	N/A	N/A	N/A	N/A	N/A	N/A
\$1,000,000 and up	0	0.0%	N/A	N/A	N/A	N/A	N/A	N/A



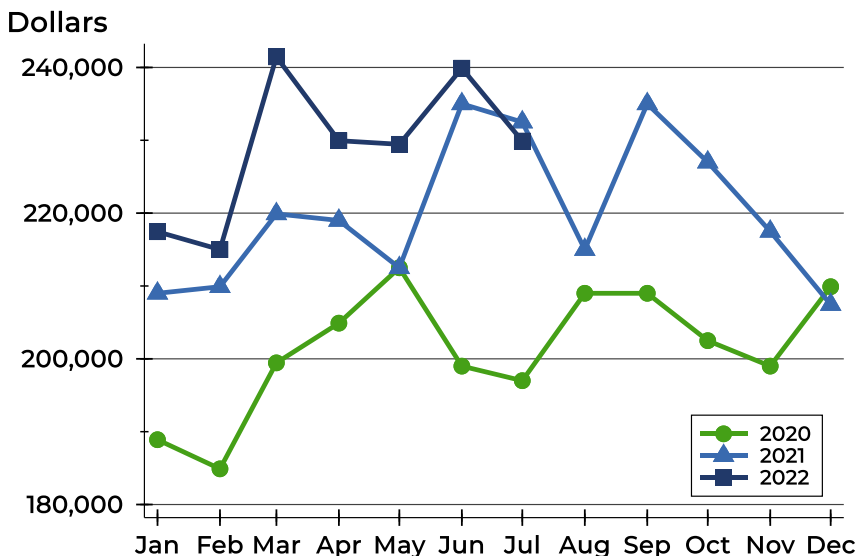
## Riley County Pending Contracts Analysis

### Average Price



Month	2020	2021	2022
January	202,199	229,781	243,204
February	196,352	229,712	239,149
March	224,078	241,420	277,287
April	219,735	242,377	273,152
May	230,029	235,738	262,768
June	219,742	250,688	260,348
July	217,070	247,424	253,615
August	233,377	230,364	
September	230,927	259,319	
October	225,181	273,363	
November	212,669	264,377	
December	217,276	246,398	

### Median Price

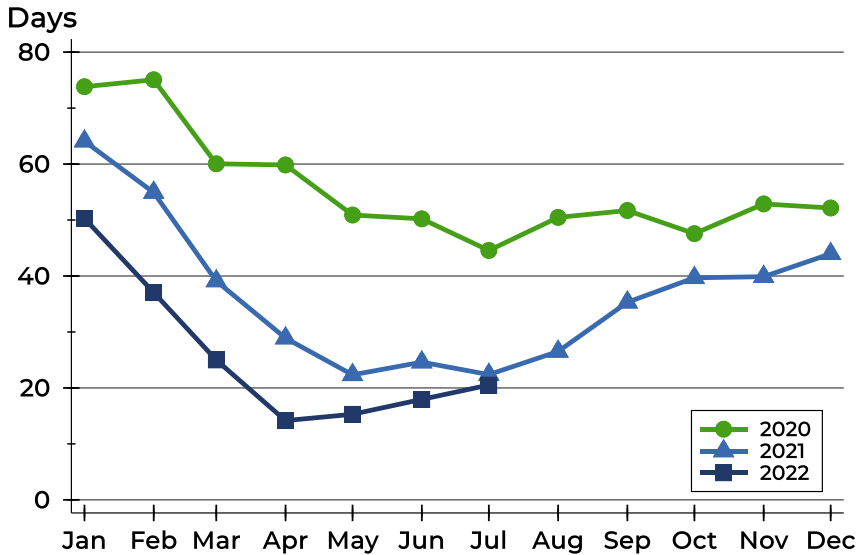


Month	2020	2021	2022
January	188,900	209,000	217,450
February	184,900	209,900	215,000
March	199,450	219,900	241,460
April	204,900	219,000	229,950
May	212,500	212,500	229,450
June	199,000	235,000	239,900
July	197,000	232,500	229,900
August	209,000	215,000	
September	209,000	235,000	
October	202,498	227,000	
November	199,000	217,500	
December	209,900	207,450	



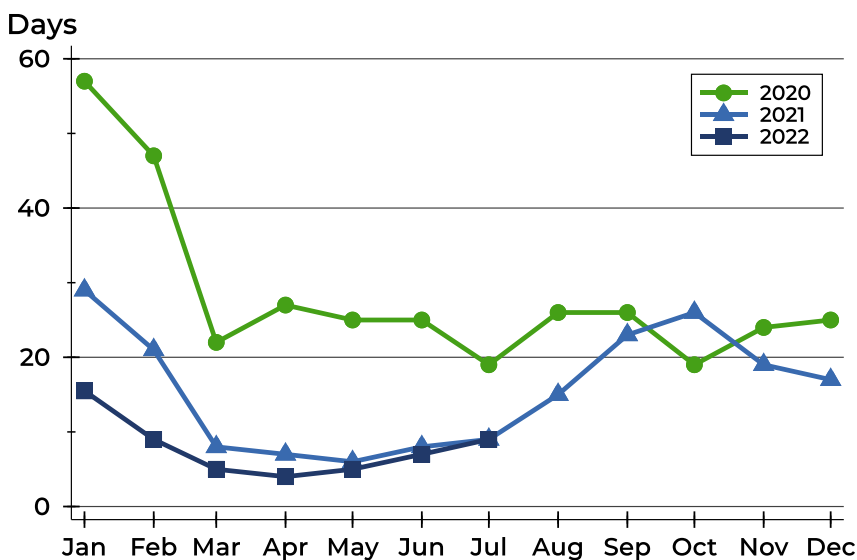
## Riley County Pending Contracts Analysis

### Average DOM



Month	2020	2021	2022
January	74	64	50
February	75	55	37
March	60	39	25
April	60	29	14
May	51	22	15
June	50	25	18
July	45	22	21
August	50	27	
September	52	35	
October	48	40	
November	53	40	
December	52	44	

### Median DOM



Month	2020	2021	2022
January	57	29	16
February	47	21	9
March	22	8	5
April	27	7	4
May	25	6	5
June	25	8	7
July	19	9	9
August	26	15	
September	26	23	
October	19	26	
November	24	19	
December	25	17	