



**August
2022**

Flint Hills MLS Statistics



**FLINT HILLS
ASSOCIATION
OF REALTORS®**

Riley County Housing Report



Market Overview

Riley County Home Sales Fell in August

Total home sales in Riley County fell last month to 98 units, compared to 110 units in August 2021. Total sales volume was \$23.6 million, down from a year earlier.

The median sale price in August was \$221,580, down from \$224,250 a year earlier. Homes that sold in August were typically on the market for 9 days and sold for 100.0% of their list prices.

Riley County Active Listings Down at End of August

The total number of active listings in Riley County at the end of August was 143 units, down from 193 at the same point in 2021. This represents a 1.6 months' supply of homes available for sale. The median list price of homes on the market at the end of August was \$254,000.

During August, a total of 75 contracts were written up from 72 in August 2021. At the end of the month, there were 118 contracts still pending.

Report Contents

- Summary Statistics – Page 2
- Closed Listing Analysis – Page 3
- Active Listings Analysis – Page 7
- Months' Supply Analysis – Page 11
- New Listings Analysis – Page 12
- Contracts Written Analysis – Page 15
- Pending Contracts Analysis – Page 19

Contact Information

Margaret Pendleton, Association Executive
 Flint Hills Association of REALTORS®
 205 S. Seth Child Road
 Manhattan, KS 66502
 785-776-1203
ae@flinthillsrealtors.net
www.flinthillsrealtors.net



**August
2022**

Flint Hills MLS Statistics



**FLINT HILLS
ASSOCIATION
OF REALTORS®**

Riley County Summary Statistics

August MLS Statistics Three-year History		Current Month			Year-to-Date		
		2022	2021	2020	2022	2021	2020
Home Sales		98	110	90	705	788	663
Change from prior year		-10.9%	22.2%	18.4%	-10.5%	18.9%	19.5%
Active Listings		143	193	227	N/A	N/A	N/A
Change from prior year		-25.9%	-15.0%	-38.6%			
Months' Supply		1.6	2.2	3.0	N/A	N/A	N/A
Change from prior year		-27.3%	-26.7%	-48.3%			
New Listings		88	103	87	855	1,001	879
Change from prior year		-14.6%	18.4%	-23.7%	-14.6%	13.9%	-7.4%
Contracts Written		75	72	74	728	821	708
Change from prior year		4.2%	-2.7%	25.4%	-11.3%	16.0%	24.4%
Pending Contracts		118	143	131	N/A	N/A	N/A
Change from prior year		-17.5%	9.2%	31.0%			
Sales Volume (1,000s)		23,614	26,969	20,853	174,395	183,080	142,050
Change from prior year		-12.4%	29.3%	11.0%	-4.7%	28.9%	16.9%
Average	Sale Price	240,959	245,172	231,701	247,369	232,335	214,253
	Change from prior year	-1.7%	5.8%	-6.2%	6.5%	8.4%	-2.1%
	List Price of Actives	291,827	270,304	263,083	N/A	N/A	N/A
	Change from prior year	8.0%	2.7%	13.6%			
	Days on Market	17	24	49	25	35	60
Change from prior year	-29.2%	-51.0%	-30.0%	-28.6%	-41.7%	-11.8%	
Percent of List	98.5%	99.3%	98.3%	100.0%	99.4%	97.9%	
Change from prior year	-0.8%	1.0%	0.4%	0.6%	1.5%	0.4%	
Percent of Original	97.2%	98.9%	96.6%	99.1%	98.4%	95.8%	
Change from prior year	-1.7%	2.4%	2.7%	0.7%	2.7%	0.7%	
Median	Sale Price	221,580	224,250	206,500	225,000	209,000	192,000
	Change from prior year	-1.2%	8.6%	3.6%	7.7%	8.9%	-0.5%
	List Price of Actives	254,000	210,000	199,900	N/A	N/A	N/A
	Change from prior year	21.0%	5.1%	10.4%			
	Days on Market	9	10	22	7	9	31
Change from prior year	-10.0%	-54.5%	-58.5%	-22.2%	-71.0%	-20.5%	
Percent of List	100.0%	100.0%	98.9%	100.0%	100.0%	98.5%	
Change from prior year	0.0%	1.1%	0.4%	0.0%	1.5%	0.3%	
Percent of Original	99.4%	100.0%	98.0%	100.0%	100.0%	97.5%	
Change from prior year	-0.6%	2.0%	1.1%	0.0%	2.6%	0.4%	

Note: Year-to-date statistics cannot be calculated for Active Listings, Months' Supply and Pending Contracts.



Riley County Closed Listings Analysis

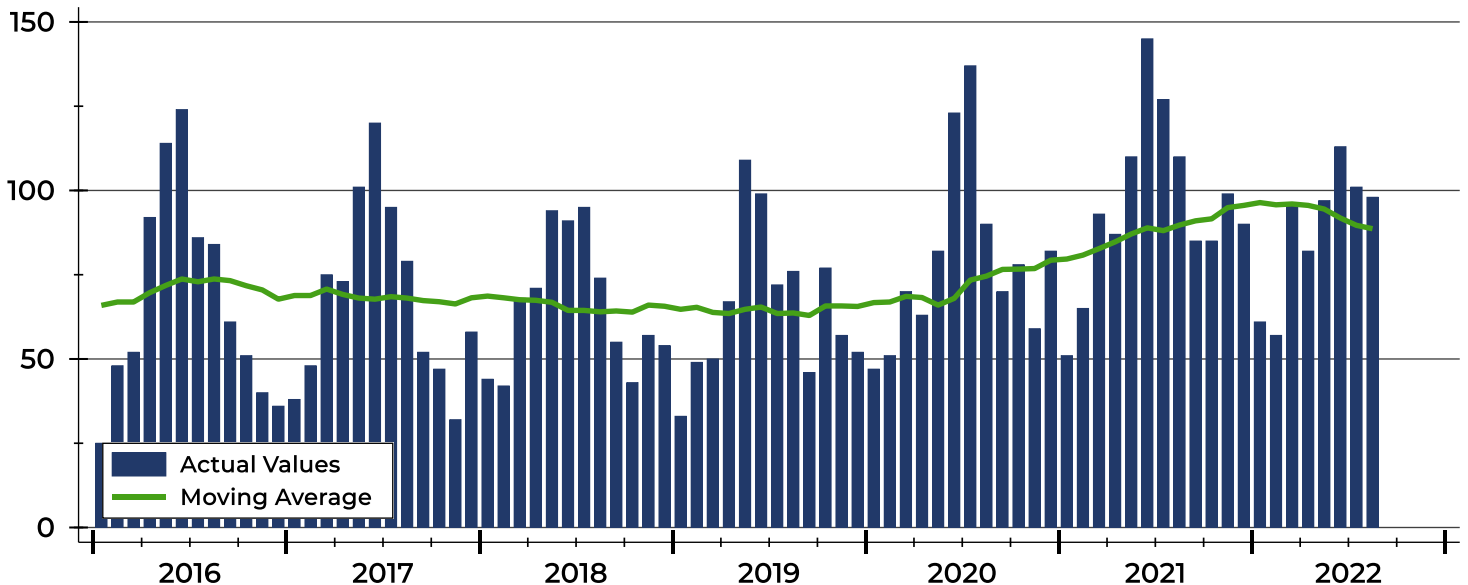
Summary Statistics for Closed Listings		2022	August 2021	Change	2022	Year-to-Date 2021	Change
Closed Listings		98	110	-10.9%	705	788	-10.5%
Volume (1,000s)		23,614	26,969	-12.4%	174,395	183,080	-4.7%
Months' Supply		1.6	2.2	-27.3%	N/A	N/A	N/A
Average	Sale Price	240,959	245,172	-1.7%	247,369	232,335	6.5%
	Days on Market	17	24	-29.2%	25	35	-28.6%
	Percent of List	98.5%	99.3%	-0.8%	100.0%	99.4%	0.6%
	Percent of Original	97.2%	98.9%	-1.7%	99.1%	98.4%	0.7%
Median	Sale Price	221,580	224,250	-1.2%	225,000	209,000	7.7%
	Days on Market	9	10	-10.0%	7	9	-22.2%
	Percent of List	100.0%	100.0%	0.0%	100.0%	100.0%	0.0%
	Percent of Original	99.4%	100.0%	-0.6%	100.0%	100.0%	0.0%

A total of 98 homes sold in Riley County in August, down from 110 units in August 2021. Total sales volume fell to \$23.6 million compared to \$27.0 million in the previous year.

The median sales price in August was \$221,580, down 1.2% compared to the prior year. Median days on market was 9 days, up from 6 days in July, but down from 10 in August 2021.

History of Closed Listings

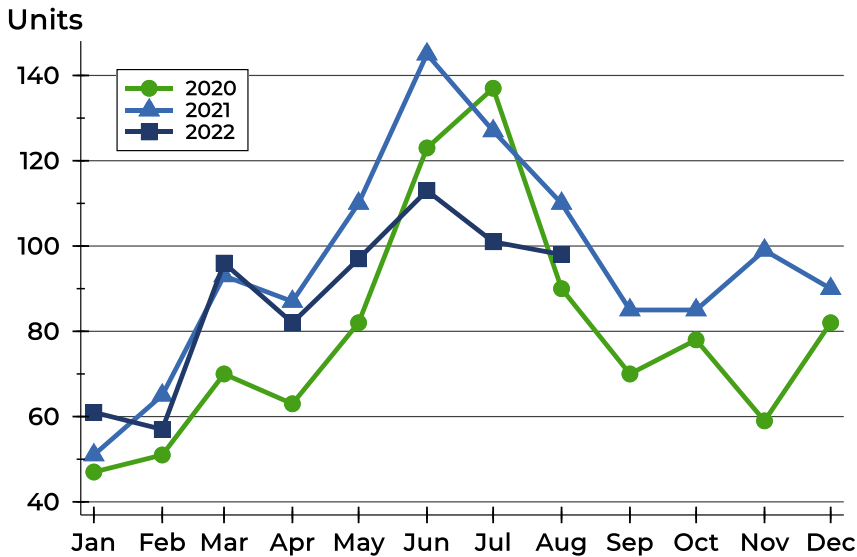
Units





Riley County Closed Listings Analysis

Closed Listings by Month



Month	2020	2021	2022
January	47	51	61
February	51	65	57
March	70	93	96
April	63	87	82
May	82	110	97
June	123	145	113
July	137	127	101
August	90	110	98
September	70	85	
October	78	85	
November	59	99	
December	82	90	

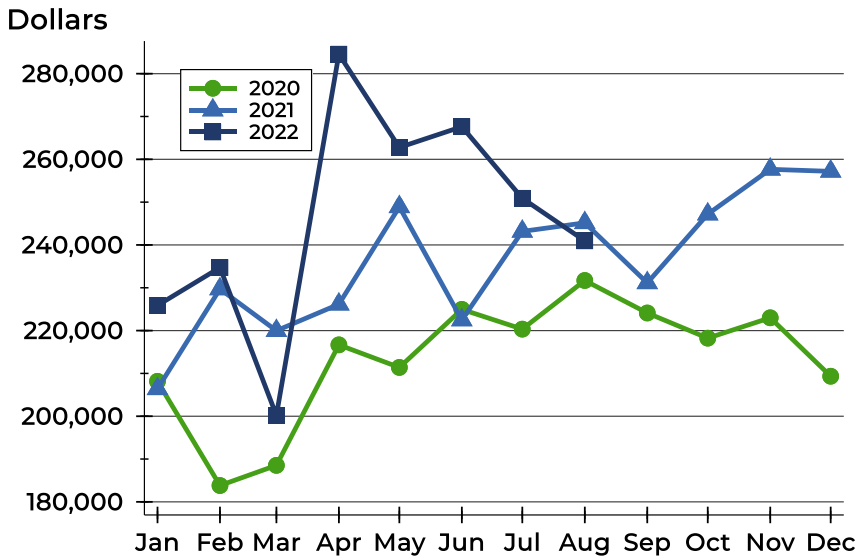
Closed Listings by Price Range

Price Range	Sales		Months' Supply	Sale Price		Days on Market		Price as % of List		Price as % of Orig.	
	Number	Percent		Average	Median	Avg.	Med.	Avg.	Med.	Avg.	Med.
Below \$25,000	0	0.0%	N/A	N/A	N/A	N/A	N/A	N/A	N/A	N/A	N/A
\$25,000-\$49,999	1	1.0%	4.0	35,000	35,000	104	104	78.0%	78.0%	63.6%	63.6%
\$50,000-\$99,999	4	4.1%	3.0	64,000	64,000	40	38	81.7%	82.5%	74.9%	74.9%
\$100,000-\$124,999	3	3.1%	2.5	116,833	115,500	14	20	94.9%	92.4%	94.9%	92.4%
\$125,000-\$149,999	2	2.0%	0.8	139,000	139,000	27	27	97.6%	97.6%	97.6%	97.6%
\$150,000-\$174,999	19	19.4%	0.8	158,811	160,000	23	10	98.7%	99.3%	96.7%	99.1%
\$175,000-\$199,999	6	6.1%	1.6	188,833	189,000	7	5	99.4%	100.0%	98.9%	98.7%
\$200,000-\$249,999	23	23.5%	1.1	220,230	219,469	14	9	99.4%	98.9%	98.6%	98.7%
\$250,000-\$299,999	18	18.4%	1.4	269,111	270,250	11	7	100.6%	100.0%	99.4%	100.0%
\$300,000-\$399,999	13	13.3%	2.0	337,885	326,000	11	4	100.6%	100.0%	100.0%	100.0%
\$400,000-\$499,999	7	7.1%	1.9	429,971	431,800	15	7	100.7%	101.5%	100.0%	101.5%
\$500,000-\$749,999	2	2.0%	3.2	616,250	616,250	28	28	95.6%	95.6%	94.7%	94.7%
\$750,000-\$999,999	0	0.0%	N/A	N/A	N/A	N/A	N/A	N/A	N/A	N/A	N/A
\$1,000,000 and up	0	0.0%	N/A	N/A	N/A	N/A	N/A	N/A	N/A	N/A	N/A



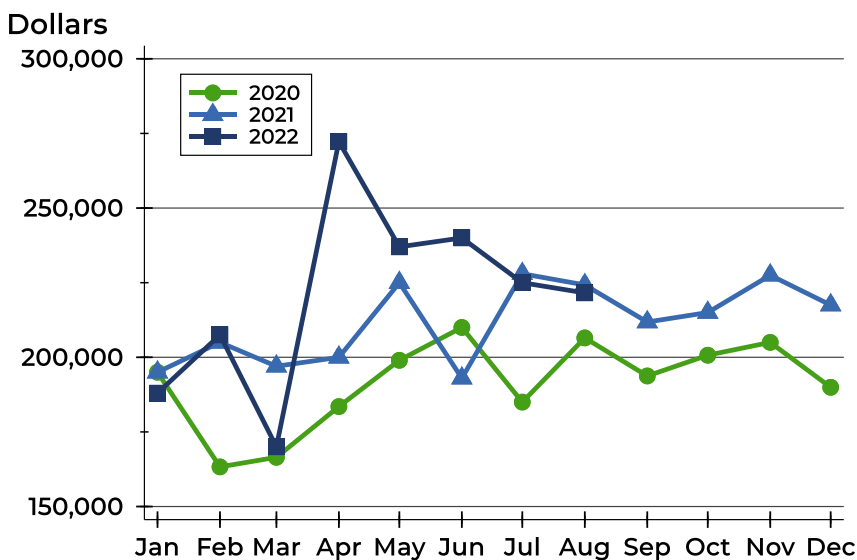
Riley County Closed Listings Analysis

Average Price



Month	2020	2021	2022
January	208,157	206,402	225,875
February	183,819	229,715	234,723
March	188,530	219,973	200,188
April	216,671	226,152	284,561
May	211,400	248,898	262,771
June	224,955	222,470	267,622
July	220,343	243,175	250,907
August	231,701	245,172	240,959
September	224,114	231,140	
October	218,236	247,194	
November	222,989	257,661	
December	209,342	257,195	

Median Price

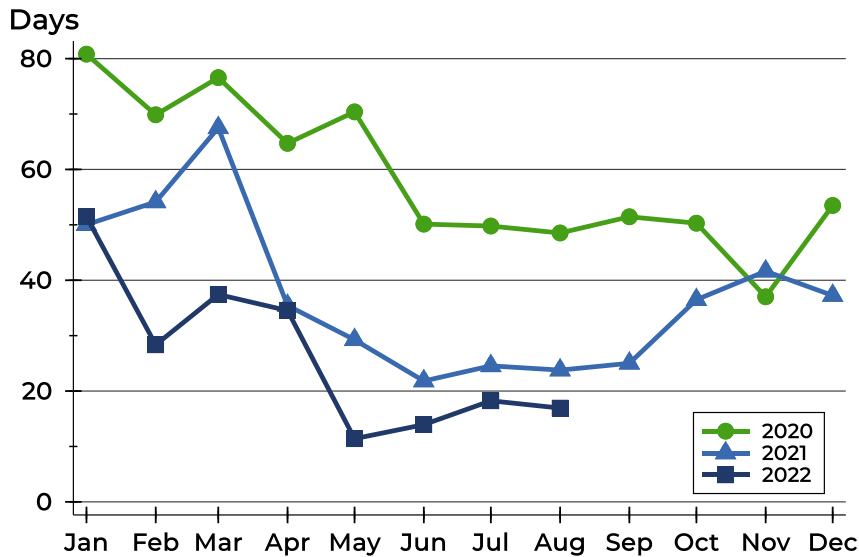


Month	2020	2021	2022
January	195,000	195,000	188,000
February	163,295	205,000	207,500
March	166,500	197,000	170,000
April	183,500	200,000	272,250
May	199,000	225,000	237,000
June	210,000	193,000	240,000
July	185,000	228,000	225,000
August	206,500	224,250	221,580
September	193,750	211,819	
October	200,700	215,000	
November	205,000	227,500	
December	189,950	217,500	



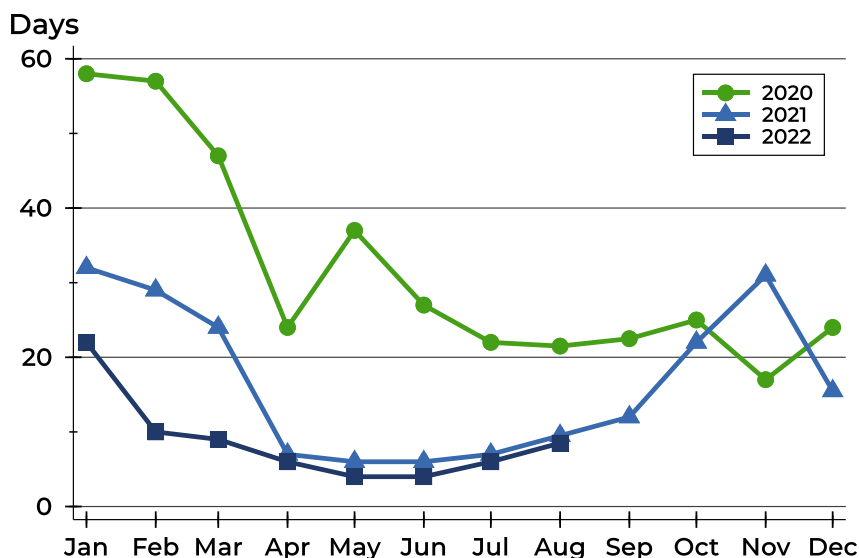
Riley County Closed Listings Analysis

Average DOM



Month	2020	2021	2022
January	81	50	51
February	70	54	28
March	77	68	37
April	65	35	35
May	70	29	11
June	50	22	14
July	50	25	18
August	49	24	17
September	51	25	
October	50	36	
November	37	42	
December	54	37	

Median DOM



Month	2020	2021	2022
January	58	32	22
February	57	29	10
March	47	24	9
April	24	7	6
May	37	6	4
June	27	6	4
July	22	7	6
August	22	10	9
September	23	12	
October	25	22	
November	17	31	
December	24	16	



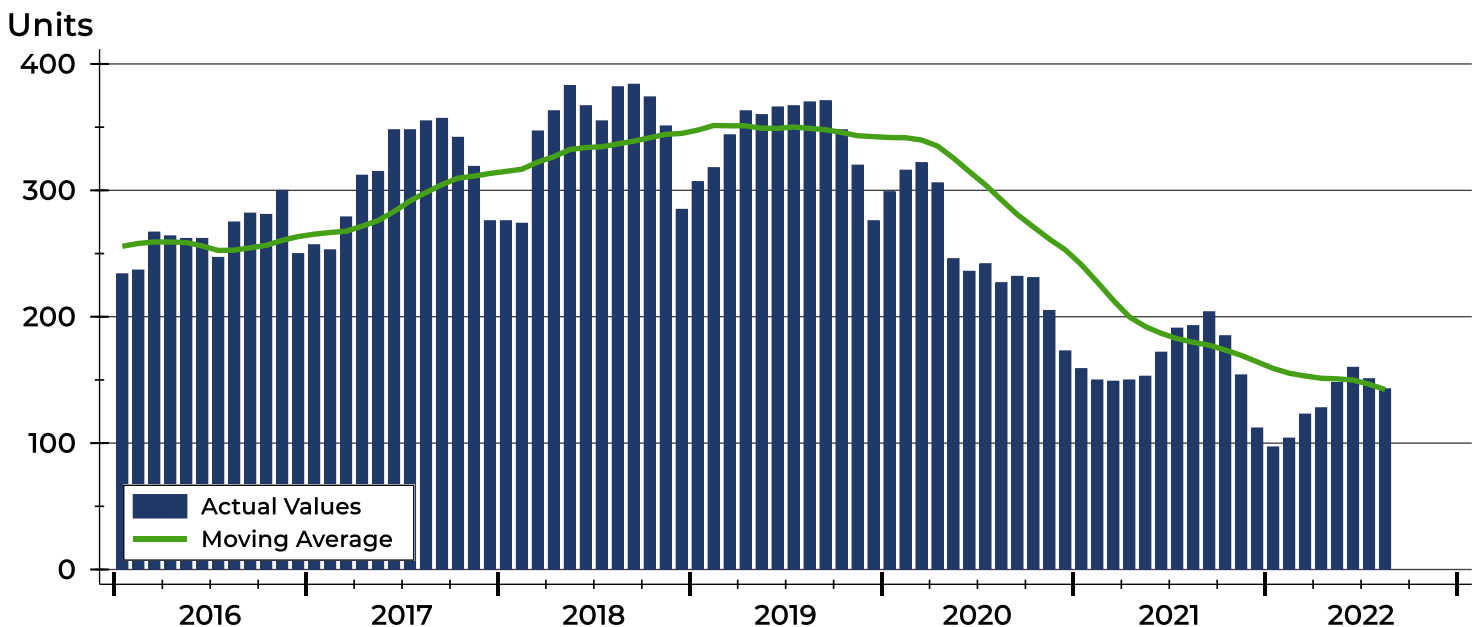
Riley County Active Listings Analysis

Summary Statistics for Active Listings		2022	End of August 2021	Change
Active Listings		143	193	-25.9%
Volume (1,000s)		41,731	52,169	-20.0%
Months' Supply		1.6	2.2	-27.3%
Average	List Price	291,827	270,304	8.0%
	Days on Market	67	77	-13.0%
	Percent of Original	97.5%	97.6%	-0.1%
Median	List Price	254,000	210,000	21.0%
	Days on Market	47	53	-11.3%
	Percent of Original	100.0%	100.0%	0.0%

A total of 143 homes were available for sale in Riley County at the end of August. This represents a 1.6 months' supply of active listings.

The median list price of homes on the market at the end of August was \$254,000, up 21.0% from 2021. The typical time on market for active listings was 47 days, down from 53 days a year earlier.

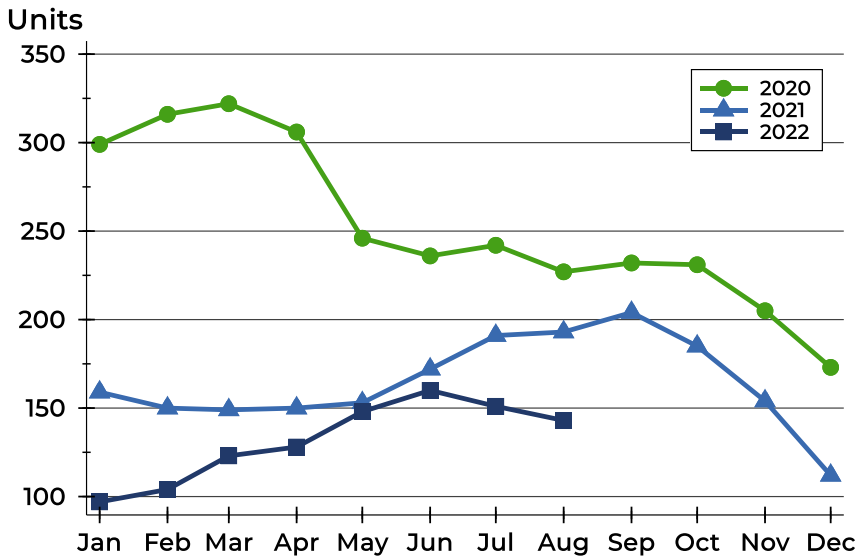
History of Active Listings





Riley County Active Listings Analysis

Active Listings by Month



Month	2020	2021	2022
January	299	159	97
February	316	150	104
March	322	149	123
April	306	150	128
May	246	153	148
June	236	172	160
July	242	191	151
August	227	193	143
September	232	204	
October	231	185	
November	205	154	
December	173	112	

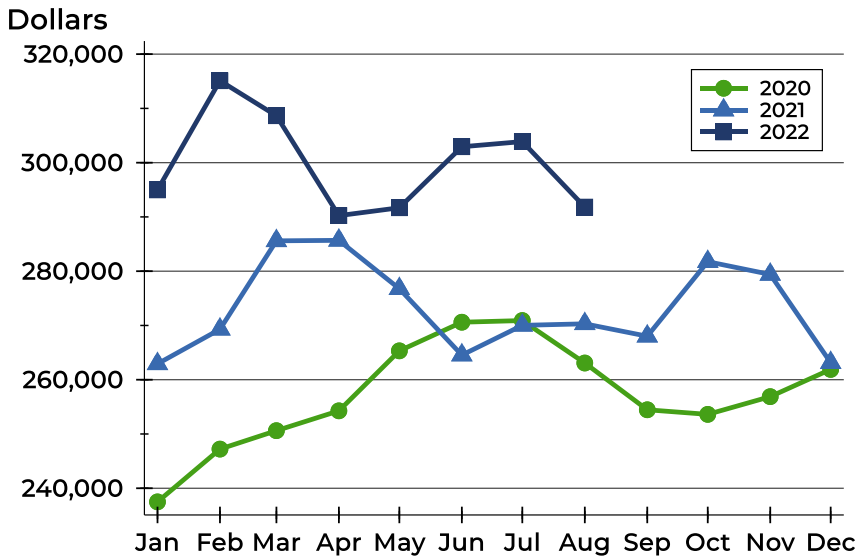
Active Listings by Price Range

Price Range	Active Listings		Months' Supply	List Price		Days on Market		Price as % of Orig.	
	Number	Percent		Average	Median	Avg.	Med.	Avg.	Med.
Below \$25,000	0	0.0%	N/A	N/A	N/A	N/A	N/A	N/A	N/A
\$25,000-\$49,999	1	0.7%	4.0	35,000	35,000	1	1	100.0%	100.0%
\$50,000-\$99,999	9	6.3%	3.0	84,039	80,000	58	51	95.0%	100.0%
\$100,000-\$124,999	11	7.7%	2.5	113,136	114,500	52	35	95.1%	100.0%
\$125,000-\$149,999	6	4.2%	0.8	133,500	132,000	75	59	99.8%	100.0%
\$150,000-\$174,999	9	6.3%	0.8	166,956	167,000	47	44	98.4%	100.0%
\$175,000-\$199,999	17	11.9%	1.6	187,247	185,000	49	32	98.3%	100.0%
\$200,000-\$249,999	18	12.6%	1.1	228,094	229,000	71	52	98.3%	100.0%
\$250,000-\$299,999	18	12.6%	1.4	277,367	274,900	53	57	96.5%	99.3%
\$300,000-\$399,999	32	22.4%	2.0	346,234	349,500	67	46	97.5%	99.3%
\$400,000-\$499,999	8	5.6%	1.9	461,075	475,000	118	78	98.9%	100.0%
\$500,000-\$749,999	8	5.6%	3.2	591,650	577,450	59	37	99.6%	100.0%
\$750,000-\$999,999	5	3.5%	N/A	881,800	886,000	123	146	94.4%	98.0%
\$1,000,000 and up	1	0.7%	N/A	1,200,000	1,200,000	295	295	100.0%	100.0%



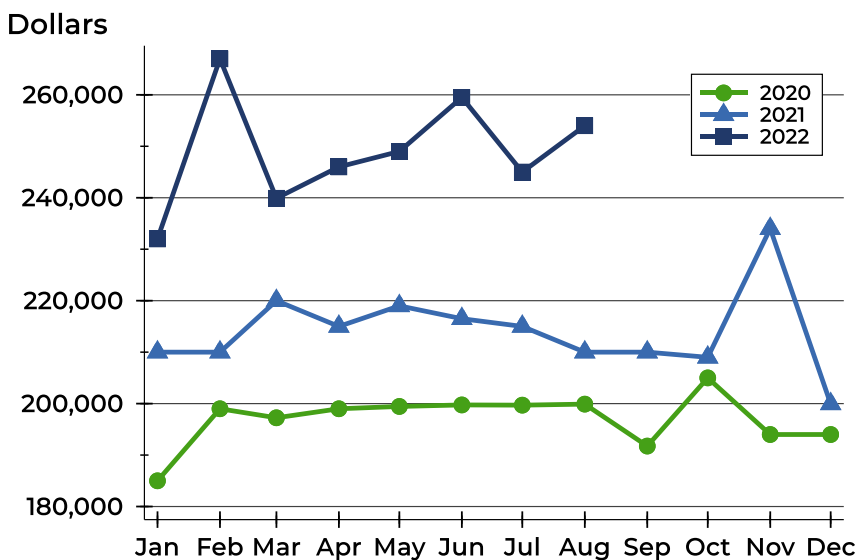
Riley County Active Listings Analysis

Average Price



Month	2020	2021	2022
January	237,490	262,929	294,980
February	247,217	269,299	315,098
March	250,613	285,597	308,649
April	254,270	285,687	290,244
May	265,322	276,770	291,693
June	270,600	264,539	302,934
July	270,904	270,021	303,886
August	263,083	270,304	291,827
September	254,462	268,017	
October	253,619	281,756	
November	256,881	279,402	
December	261,905	263,144	

Median Price

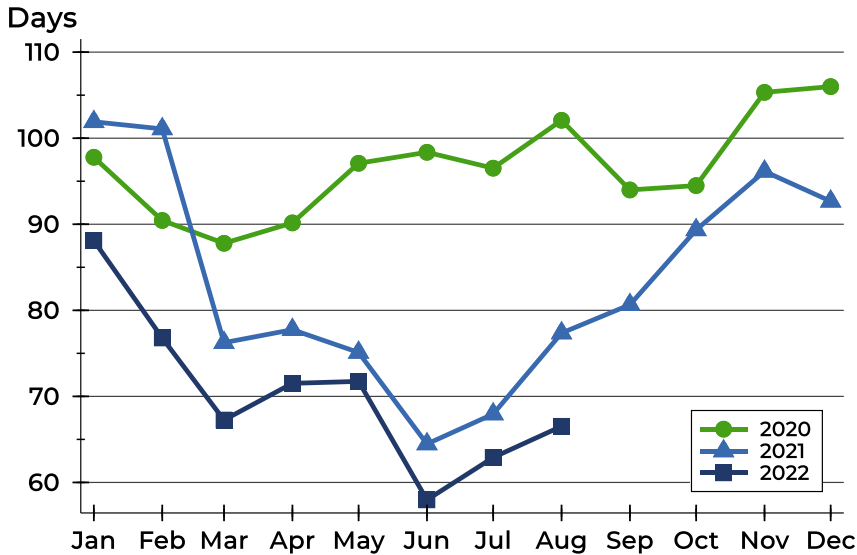


Month	2020	2021	2022
January	185,000	210,000	232,000
February	199,000	210,000	267,000
March	197,245	220,000	239,900
April	199,000	215,000	246,000
May	199,450	219,000	249,000
June	199,748	216,500	259,500
July	199,700	215,000	245,000
August	199,900	210,000	254,000
September	191,750	210,000	
October	205,000	209,000	
November	194,000	234,000	
December	194,000	199,950	



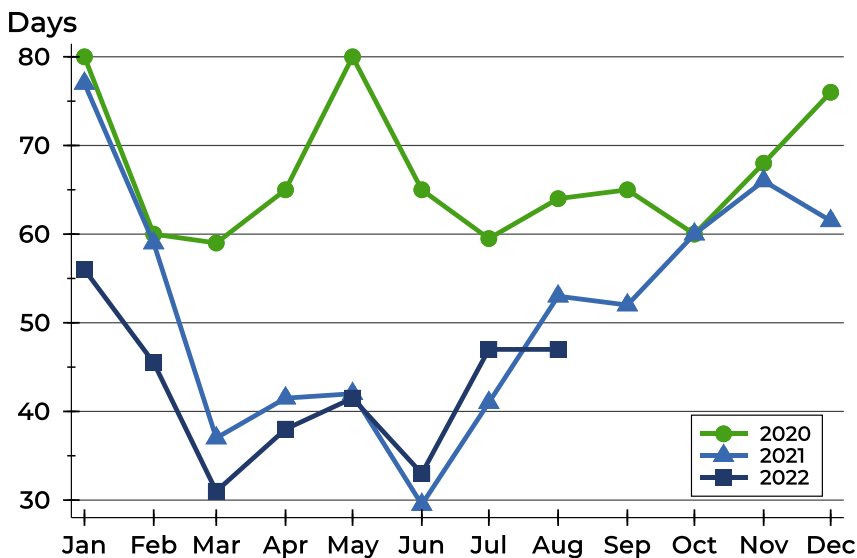
Riley County Active Listings Analysis

Average DOM



Month	2020	2021	2022
January	98	102	88
February	90	101	77
March	88	76	67
April	90	78	72
May	97	75	72
June	98	64	58
July	97	68	63
August	102	77	67
September	94	81	
October	94	89	
November	105	96	
December	106	93	

Median DOM

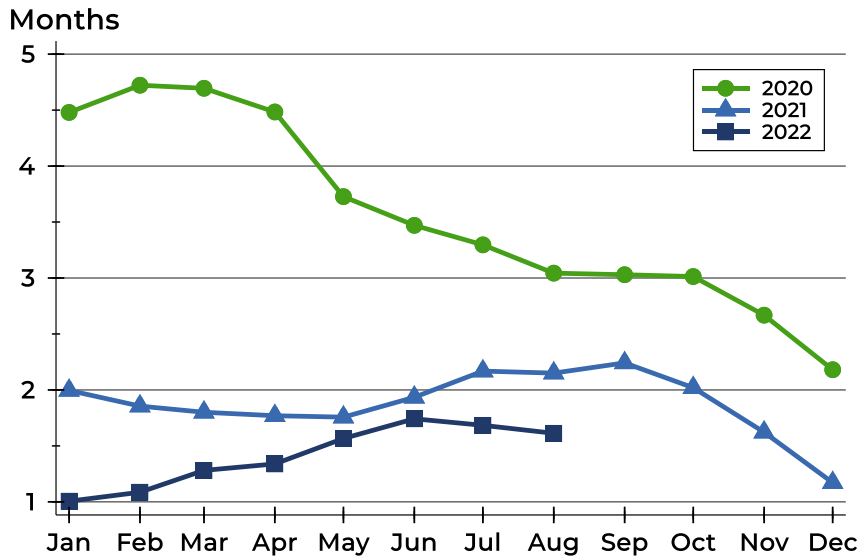


Month	2020	2021	2022
January	80	77	56
February	60	59	46
March	59	37	31
April	65	42	38
May	80	42	42
June	65	30	33
July	60	41	47
August	64	53	47
September	65	52	
October	60	60	
November	68	66	
December	76	62	



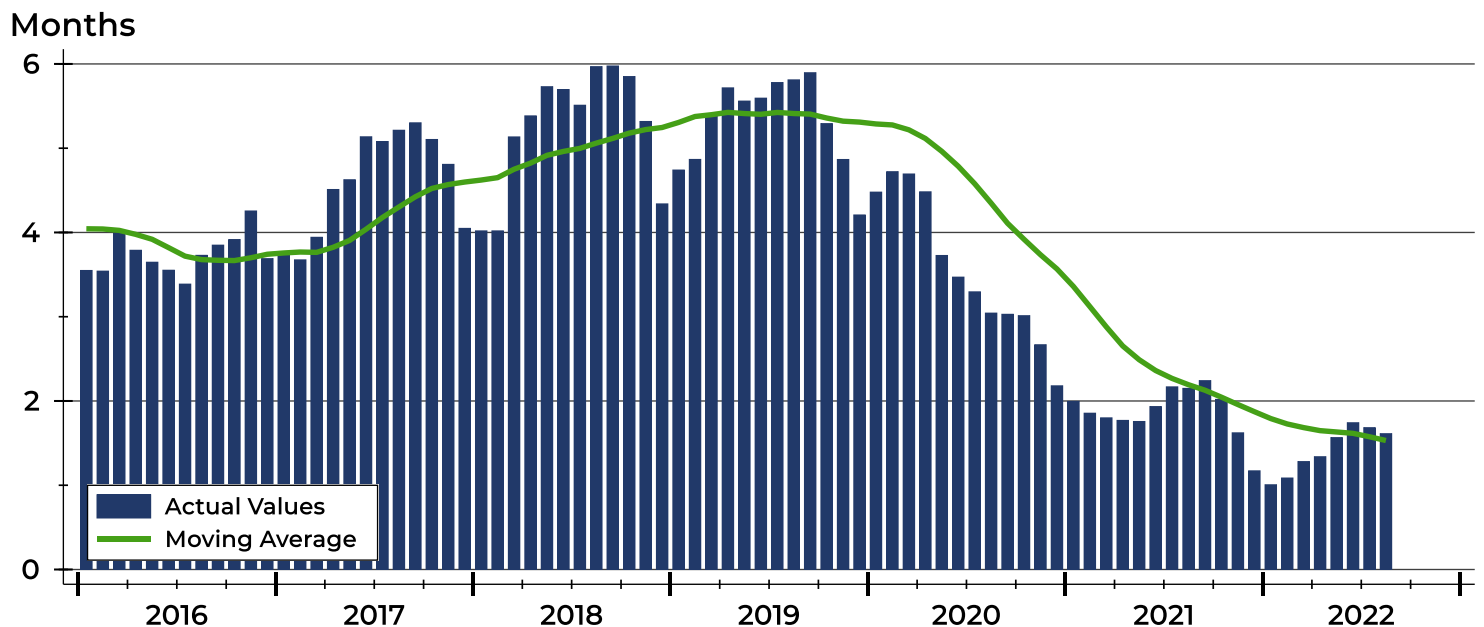
Riley County Months' Supply Analysis

Months' Supply by Month



Month	2020	2021	2022
January	4.5	2.0	1.0
February	4.7	1.9	1.1
March	4.7	1.8	1.3
April	4.5	1.8	1.3
May	3.7	1.8	1.6
June	3.5	1.9	1.7
July	3.3	2.2	1.7
August	3.0	2.2	1.6
September	3.0	2.2	
October	3.0	2.0	
November	2.7	1.6	
December	2.2	1.2	

History of Month's Supply





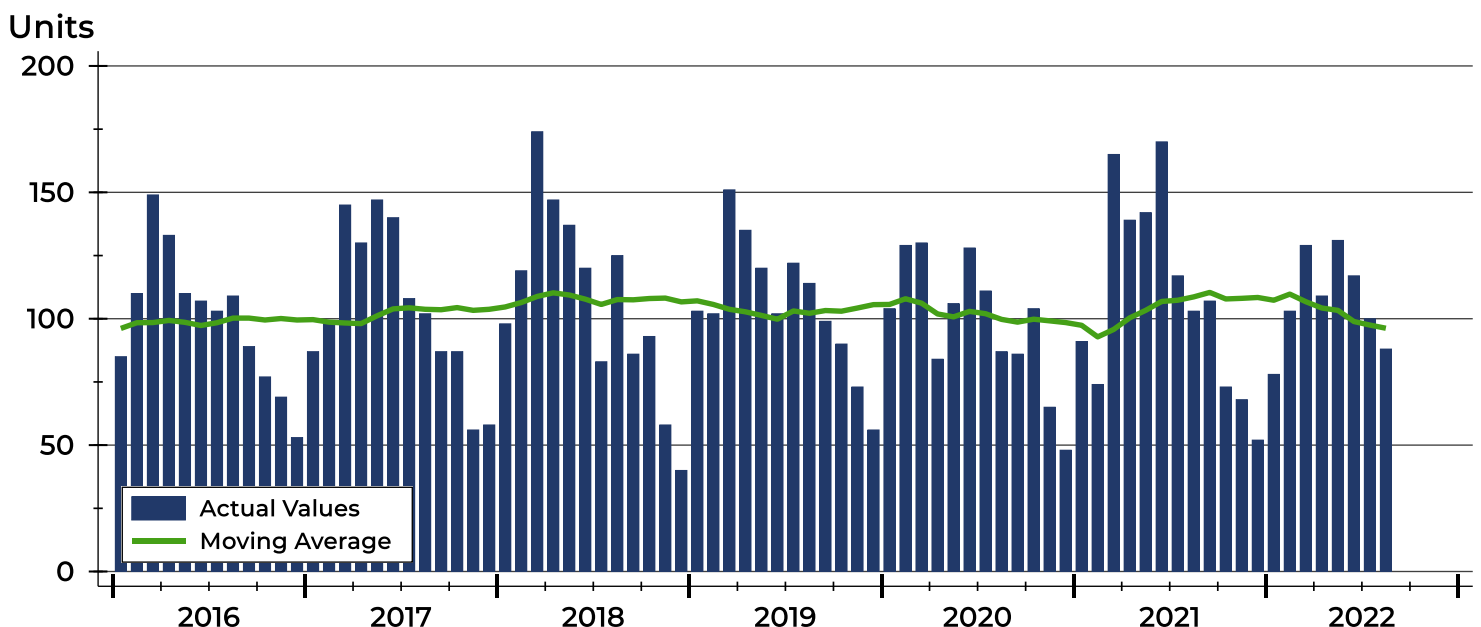
Riley County New Listings Analysis

Summary Statistics for New Listings		2022	August 2021	Change
Current Month	New Listings	88	103	-14.6%
	Volume (1,000s)	23,018	23,552	-2.3%
	Average List Price	261,565	228,658	14.4%
	Median List Price	237,500	205,000	15.9%
Year-to-Date	New Listings	855	1,001	-14.6%
	Volume (1,000s)	222,328	239,059	-7.0%
	Average List Price	260,033	238,821	8.9%
	Median List Price	235,000	215,000	9.3%

A total of 88 new listings were added in Riley County during August, down 14.6% from the same month in 2021. Year-to-date Riley County has seen 855 new listings.

The median list price of these homes was \$237,500 up from \$205,000 in 2021.

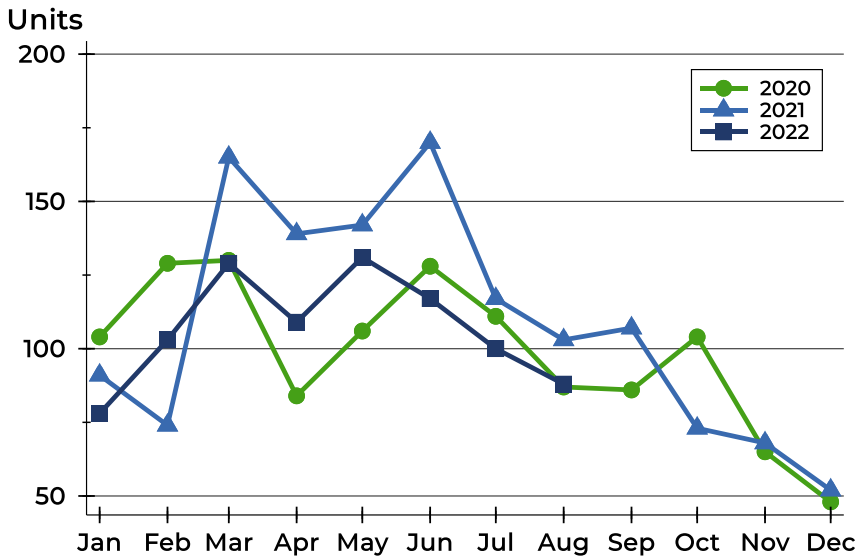
History of New Listings





Riley County New Listings Analysis

New Listings by Month



Month	2020	2021	2022
January	104	91	78
February	129	74	103
March	130	165	129
April	84	139	109
May	106	142	131
June	128	170	117
July	111	117	100
August	87	103	88
September	86	107	
October	104	73	
November	65	68	
December	48	52	

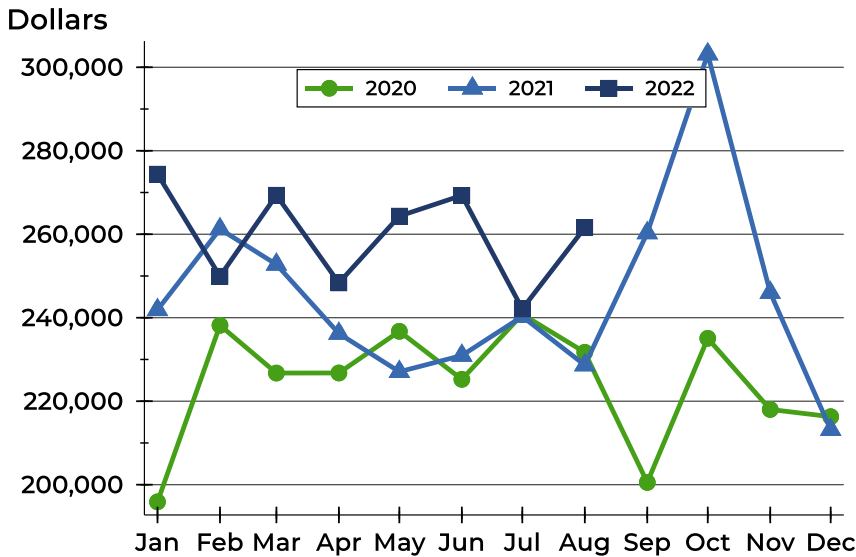
New Listings by Price Range

Price Range	New Listings		List Price		Days on Market		Price as % of Orig.	
	Number	Percent	Average	Median	Avg.	Med.	Avg.	Med.
Below \$25,000	0	0.0%	N/A	N/A	N/A	N/A	N/A	N/A
\$25,000-\$49,999	1	1.1%	35,000	35,000	3	3	100.0%	100.0%
\$50,000-\$99,999	3	3.4%	92,500	98,000	13	9	100.0%	100.0%
\$100,000-\$124,999	3	3.4%	112,500	115,000	13	14	100.0%	100.0%
\$125,000-\$149,999	6	6.8%	136,967	135,000	15	14	99.5%	100.0%
\$150,000-\$174,999	5	5.7%	168,280	169,000	21	18	99.7%	100.0%
\$175,000-\$199,999	13	14.8%	188,292	188,500	17	14	100.1%	100.0%
\$200,000-\$249,999	17	19.3%	224,518	220,000	12	10	99.7%	100.0%
\$250,000-\$299,999	15	17.0%	273,173	275,000	9	7	100.0%	100.0%
\$300,000-\$399,999	16	18.2%	326,794	324,950	15	14	99.1%	100.0%
\$400,000-\$499,999	4	4.5%	473,675	472,450	18	17	100.0%	100.0%
\$500,000-\$749,999	4	4.5%	617,225	604,450	15	12	99.2%	100.0%
\$750,000-\$999,999	1	1.1%	750,000	750,000	12	12	100.0%	100.0%
\$1,000,000 and up	0	0.0%	N/A	N/A	N/A	N/A	N/A	N/A



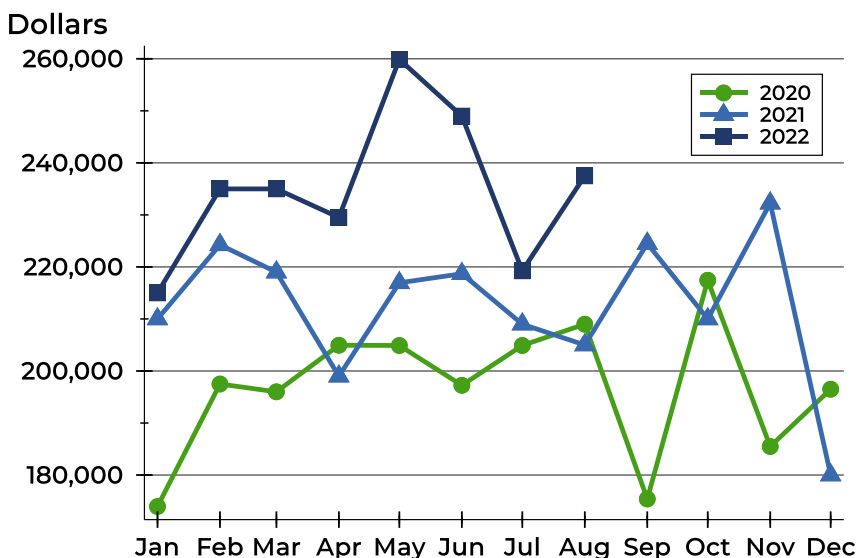
Riley County New Listings Analysis

Average Price



Month	2020	2021	2022
January	195,887	241,888	274,397
February	238,191	261,254	249,932
March	226,747	252,772	269,345
April	226,764	236,225	248,339
May	236,745	227,067	264,341
June	225,242	230,952	269,311
July	240,816	240,298	242,121
August	231,720	228,658	261,565
September	200,543	260,308	
October	235,066	303,145	
November	218,030	246,026	
December	216,300	213,190	

Median Price



Month	2020	2021	2022
January	173,950	210,000	215,000
February	197,500	224,250	235,000
March	196,000	219,000	235,000
April	204,948	199,000	229,500
May	204,900	216,950	259,900
June	197,250	218,700	249,000
July	204,900	209,000	219,250
August	209,000	205,000	237,500
September	175,400	224,500	
October	217,450	209,999	
November	185,500	232,250	
December	196,500	180,000	



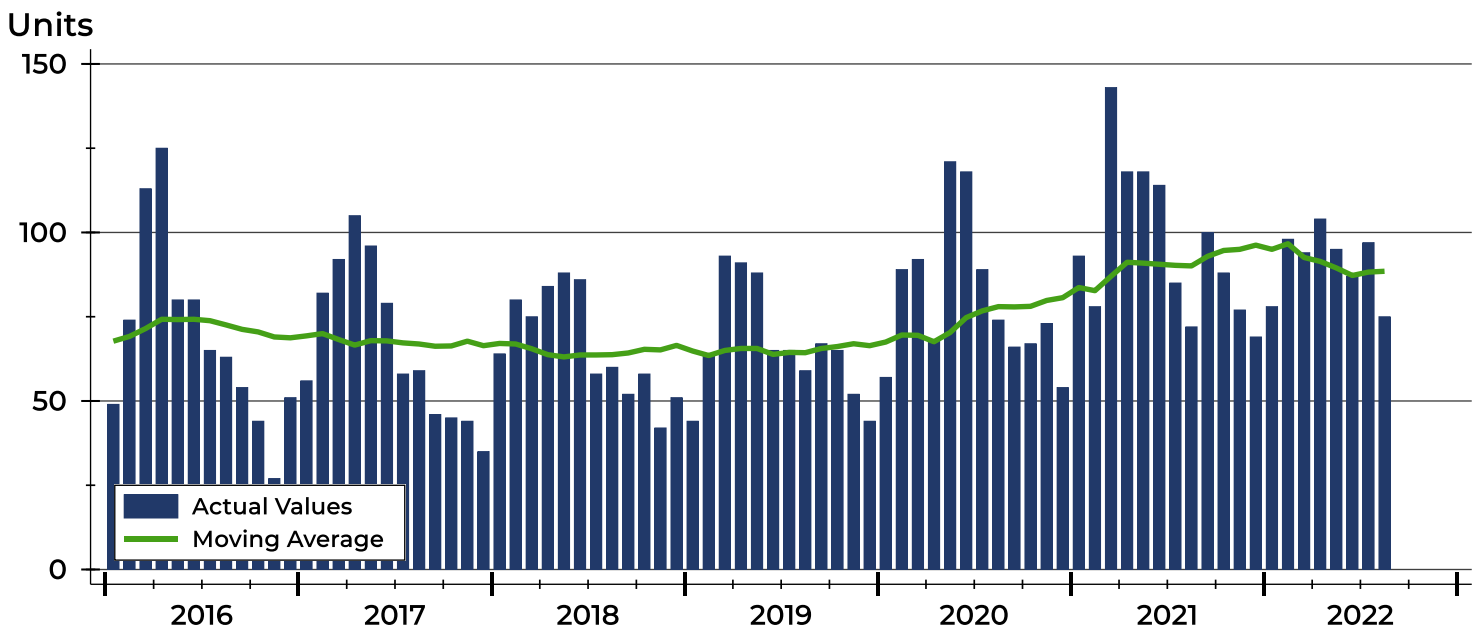
Riley County Contracts Written Analysis

Summary Statistics for Contracts Written		2022	August 2021	Change	2022	Year-to-Date 2021	Change
Contracts Written		75	72	4.2%	728	821	-11.3%
Volume (1,000s)		18,578	15,703	18.3%	181,366	193,522	-6.3%
Average	Sale Price	247,711	218,103	13.6%	249,129	235,715	5.7%
	Days on Market	21	26	-19.2%	22	32	-31.3%
	Percent of Original	98.6%	98.3%	0.3%	99.4%	98.8%	0.6%
Median	Sale Price	229,900	197,450	16.4%	226,500	214,900	5.4%
	Days on Market	8	15	-46.7%	7	9	-22.2%
	Percent of Original	100.0%	99.6%	0.4%	100.0%	100.0%	0.0%

A total of 75 contracts for sale were written in Riley County during the month of August, up from 72 in 2021. The median list price of these homes was \$229,900, up from \$197,450 the prior year.

Half of the homes that went under contract in August were on the market less than 8 days, compared to 15 days in August 2021.

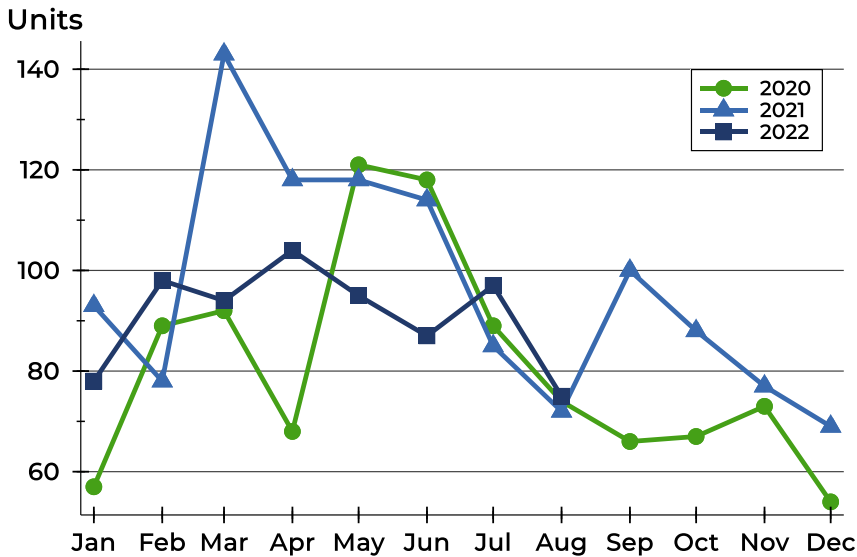
History of Contracts Written





Riley County Contracts Written Analysis

Contracts Written by Month



Month	2020	2021	2022
January	57	93	78
February	89	78	98
March	92	143	94
April	68	118	104
May	121	118	95
June	118	114	87
July	89	85	97
August	74	72	75
September	66	100	
October	67	88	
November	73	77	
December	54	69	

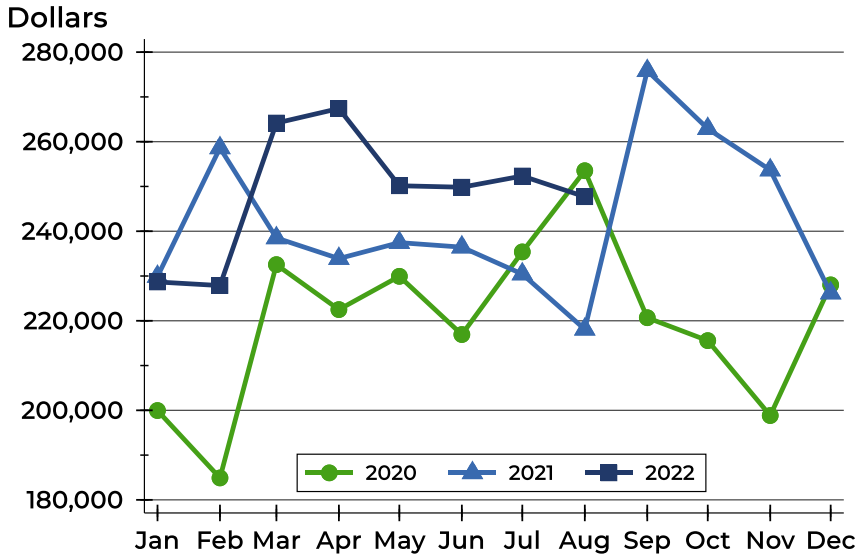
Contracts Written by Price Range

Price Range	Contracts Written		List Price		Days on Market		Price as % of Orig.	
	Number	Percent	Average	Median	Avg.	Med.	Avg.	Med.
Below \$25,000	0	0.0%	N/A	N/A	N/A	N/A	N/A	N/A
\$25,000-\$49,999	1	1.3%	44,900	44,900	104	104	63.6%	63.6%
\$50,000-\$99,999	2	2.7%	83,750	83,750	26	26	98.6%	98.6%
\$100,000-\$124,999	4	5.3%	112,125	110,500	14	14	100.0%	100.0%
\$125,000-\$149,999	7	9.3%	139,386	135,000	23	24	98.7%	100.0%
\$150,000-\$174,999	9	12.0%	164,556	165,000	29	18	98.2%	100.0%
\$175,000-\$199,999	8	10.7%	181,863	179,450	17	5	98.9%	100.0%
\$200,000-\$249,999	13	17.3%	227,115	229,900	9	6	99.9%	100.0%
\$250,000-\$299,999	13	17.3%	273,831	275,000	18	5	99.0%	100.0%
\$300,000-\$399,999	11	14.7%	329,618	319,000	12	4	99.8%	100.0%
\$400,000-\$499,999	3	4.0%	429,300	419,000	41	28	98.4%	100.0%
\$500,000-\$749,999	4	5.3%	644,950	659,900	41	39	97.2%	97.7%
\$750,000-\$999,999	0	0.0%	N/A	N/A	N/A	N/A	N/A	N/A
\$1,000,000 and up	0	0.0%	N/A	N/A	N/A	N/A	N/A	N/A



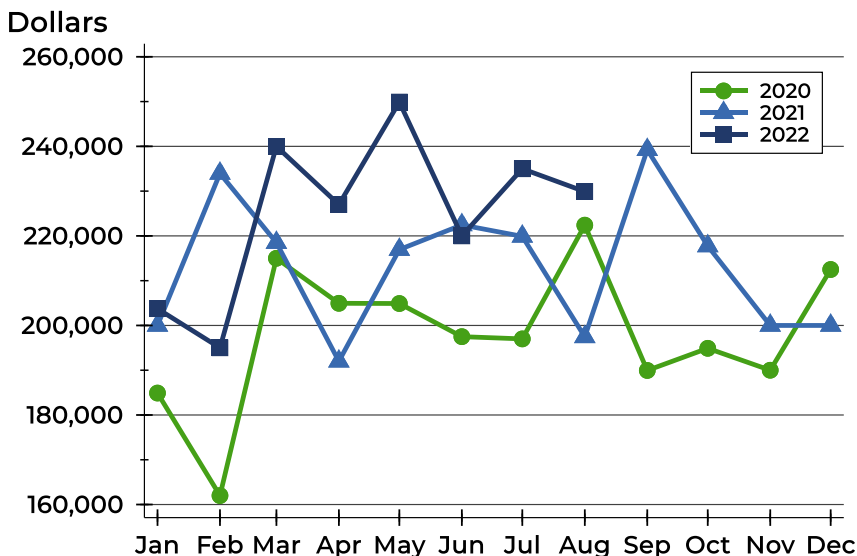
Riley County Contracts Written Analysis

Average Price



Month	2020	2021	2022
January	199,955	229,883	228,668
February	184,907	258,609	227,871
March	232,539	238,500	264,169
April	222,503	233,899	267,411
May	229,933	237,460	250,158
June	216,930	236,450	249,833
July	235,391	230,434	252,337
August	253,520	218,103	247,711
September	220,682	275,842	
October	215,569	262,907	
November	198,841	253,665	
December	228,017	226,182	

Median Price

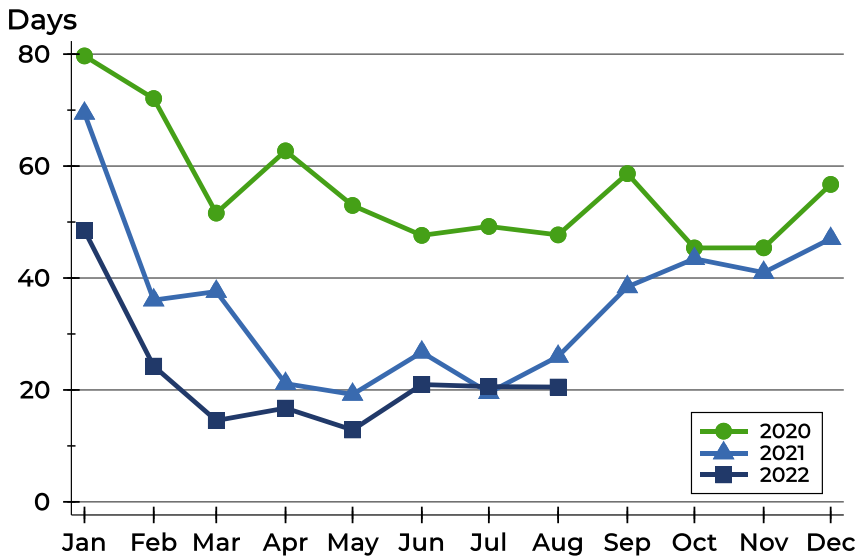


Month	2020	2021	2022
January	184,900	200,000	203,750
February	162,000	233,950	195,000
March	215,000	218,500	240,000
April	204,950	192,000	227,000
May	204,900	216,950	249,900
June	197,500	222,450	220,000
July	197,000	219,900	235,000
August	222,400	197,450	229,900
September	189,950	239,250	
October	194,900	217,750	
November	190,000	200,000	
December	212,500	200,000	



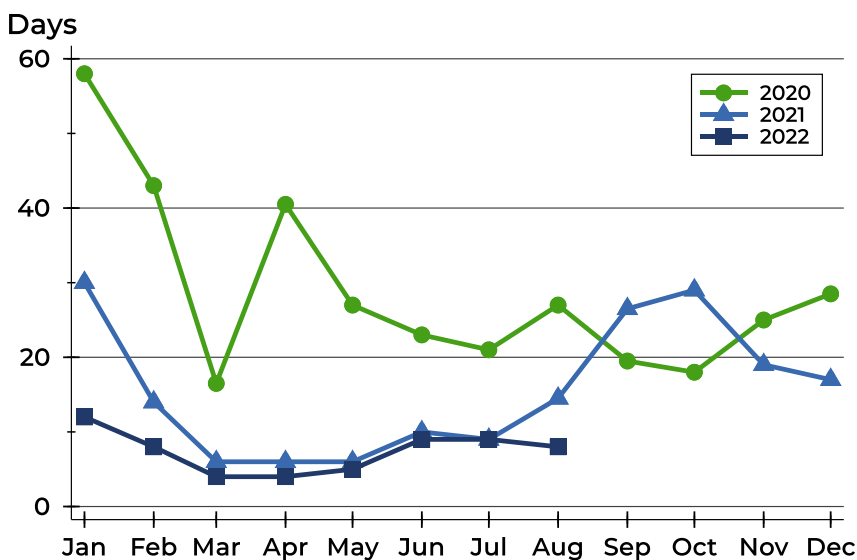
Riley County Contracts Written Analysis

Average DOM



Month	2020	2021	2022
January	80	69	48
February	72	36	24
March	52	38	15
April	63	21	17
May	53	19	13
June	48	27	21
July	49	20	21
August	48	26	21
September	59	38	
October	45	43	
November	45	41	
December	57	47	

Median DOM



Month	2020	2021	2022
January	58	30	12
February	43	14	8
March	17	6	4
April	41	6	4
May	27	6	5
June	23	10	9
July	21	9	9
August	27	15	8
September	20	27	
October	18	29	
November	25	19	
December	29	17	



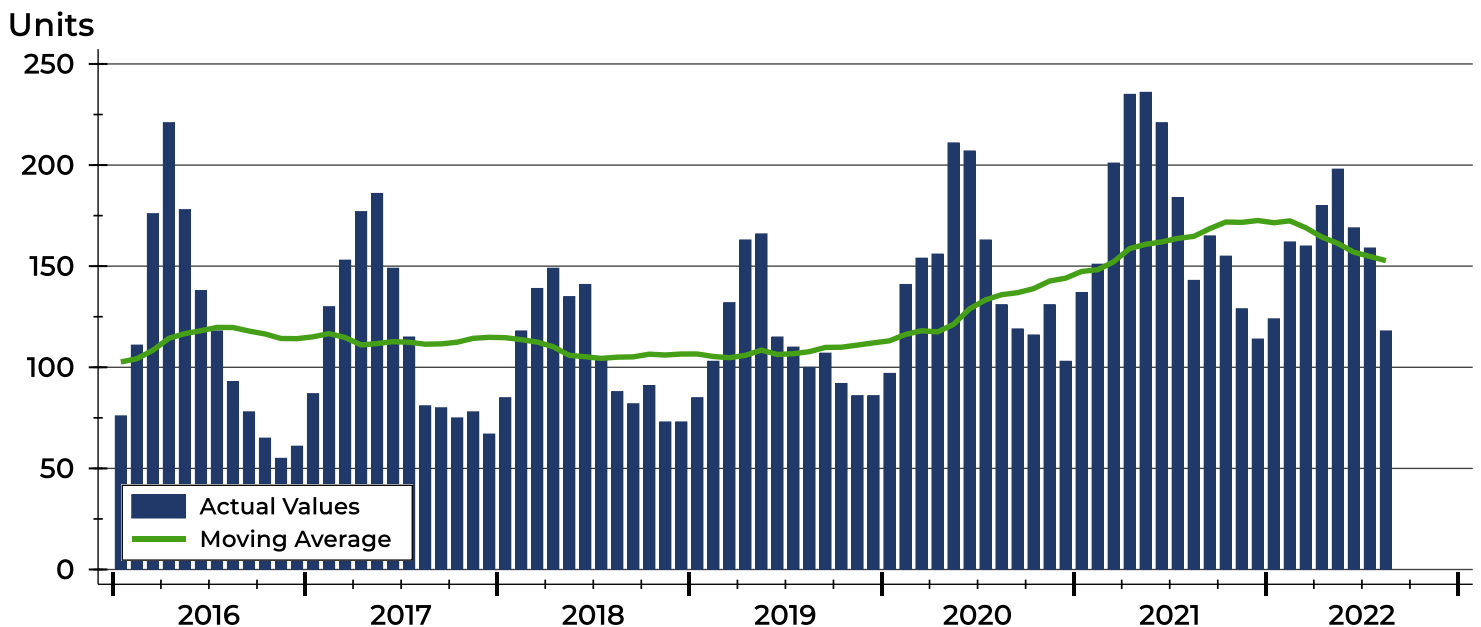
Riley County Pending Contracts Analysis

Summary Statistics for Pending Contracts		End of August		Change
		2022	2021	
Pending Contracts		118	143	-17.5%
Volume (1,000s)		30,648	32,942	-7.0%
Average	List Price	259,732	230,364	12.7%
	Days on Market	27	27	0.0%
	Percent of Original	98.9%	98.8%	0.1%
Median	List Price	235,000	215,000	9.3%
	Days on Market	10	15	-33.3%
	Percent of Original	100.0%	100.0%	0.0%

A total of 118 listings in Riley County had contracts pending at the end of August, down from 143 contracts pending at the end of August 2021.

Pending contracts reflect listings with a contract in place at the end of the month. In contrast, contracts written measures the number of listings put under contract during the month.

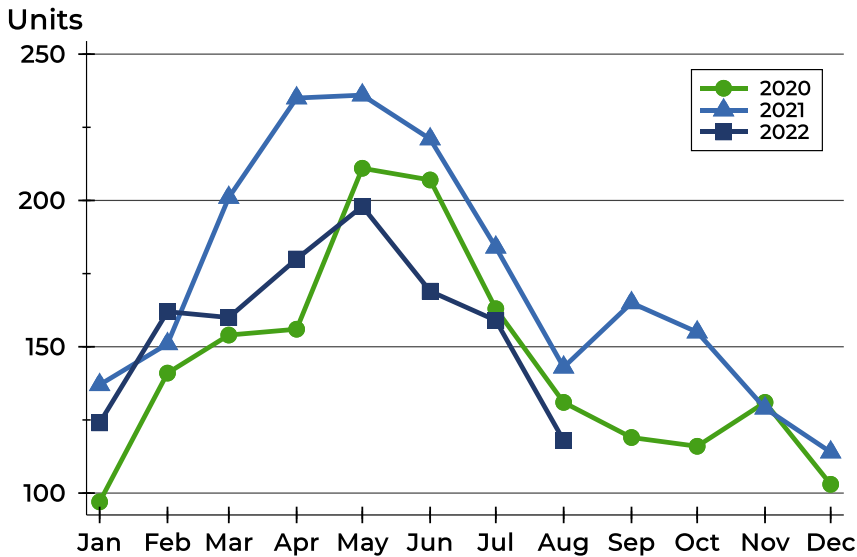
History of Pending Contracts





Riley County Pending Contracts Analysis

Pending Contracts by Month



Month	2020	2021	2022
January	97	137	124
February	141	151	162
March	154	201	160
April	156	235	180
May	211	236	198
June	207	221	169
July	163	184	159
August	131	143	118
September	119	165	
October	116	155	
November	131	129	
December	103	114	

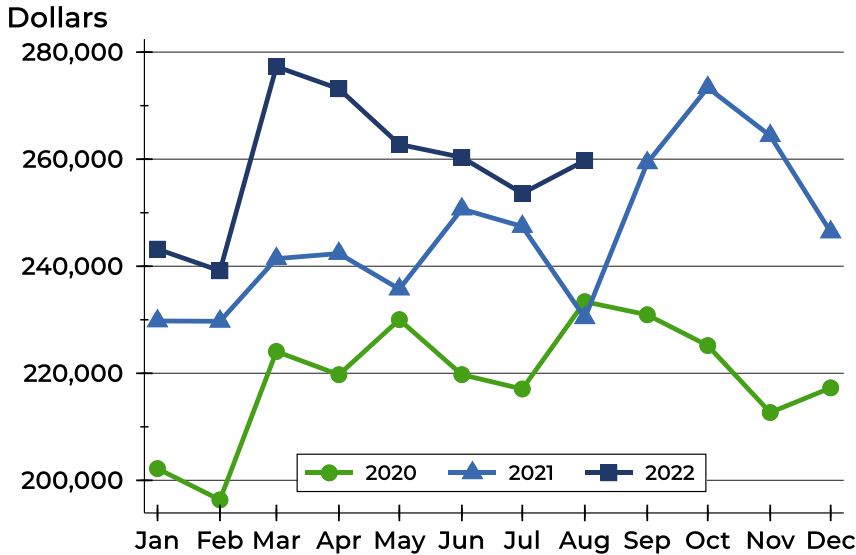
Pending Contracts by Price Range

Price Range	Pending Contracts		List Price		Days on Market		Price as % of Orig.	
	Number	Percent	Average	Median	Avg.	Med.	Avg.	Med.
Below \$25,000	0	0.0%	N/A	N/A	N/A	N/A	N/A	N/A
\$25,000-\$49,999	1	0.8%	42,000	42,000	7	7	100.0%	100.0%
\$50,000-\$99,999	3	2.5%	82,167	79,000	18	4	99.0%	100.0%
\$100,000-\$124,999	4	3.4%	110,625	110,000	14	14	98.6%	100.0%
\$125,000-\$149,999	8	6.8%	136,875	135,000	33	22	98.3%	100.0%
\$150,000-\$174,999	13	11.0%	164,308	165,000	24	17	98.6%	100.0%
\$175,000-\$199,999	15	12.7%	186,447	180,000	17	7	98.9%	100.0%
\$200,000-\$249,999	21	17.8%	227,381	229,900	21	7	99.6%	100.0%
\$250,000-\$299,999	21	17.8%	274,838	275,000	17	6	98.5%	100.0%
\$300,000-\$399,999	19	16.1%	339,076	325,000	29	10	98.3%	100.0%
\$400,000-\$499,999	7	5.9%	445,916	443,609	84	28	100.7%	100.0%
\$500,000-\$749,999	6	5.1%	629,867	634,700	50	62	98.1%	100.0%
\$750,000-\$999,999	0	0.0%	N/A	N/A	N/A	N/A	N/A	N/A
\$1,000,000 and up	0	0.0%	N/A	N/A	N/A	N/A	N/A	N/A



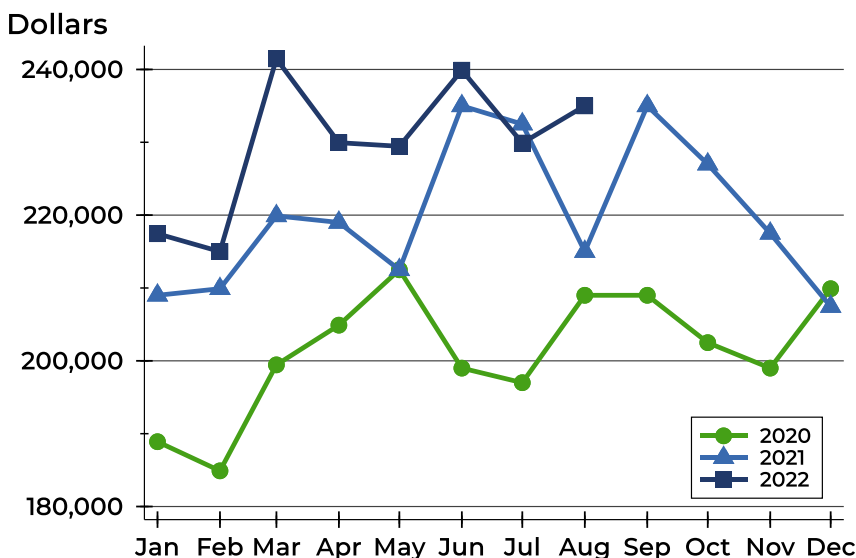
Riley County Pending Contracts Analysis

Average Price



Month	2020	2021	2022
January	202,199	229,781	243,204
February	196,352	229,712	239,149
March	224,078	241,420	277,287
April	219,735	242,377	273,152
May	230,029	235,738	262,768
June	219,742	250,688	260,348
July	217,070	247,424	253,615
August	233,377	230,364	259,732
September	230,927	259,319	
October	225,181	273,363	
November	212,669	264,377	
December	217,276	246,398	

Median Price

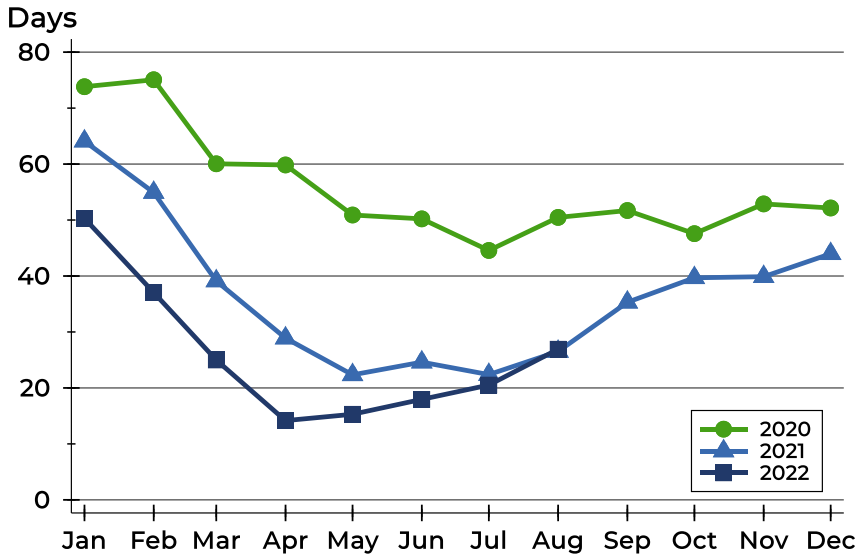


Month	2020	2021	2022
January	188,900	209,000	217,450
February	184,900	209,900	215,000
March	199,450	219,900	241,460
April	204,900	219,000	229,950
May	212,500	212,500	229,450
June	199,000	235,000	239,900
July	197,000	232,500	229,900
August	209,000	215,000	235,000
September	209,000	235,000	
October	202,498	227,000	
November	199,000	217,500	
December	209,900	207,450	



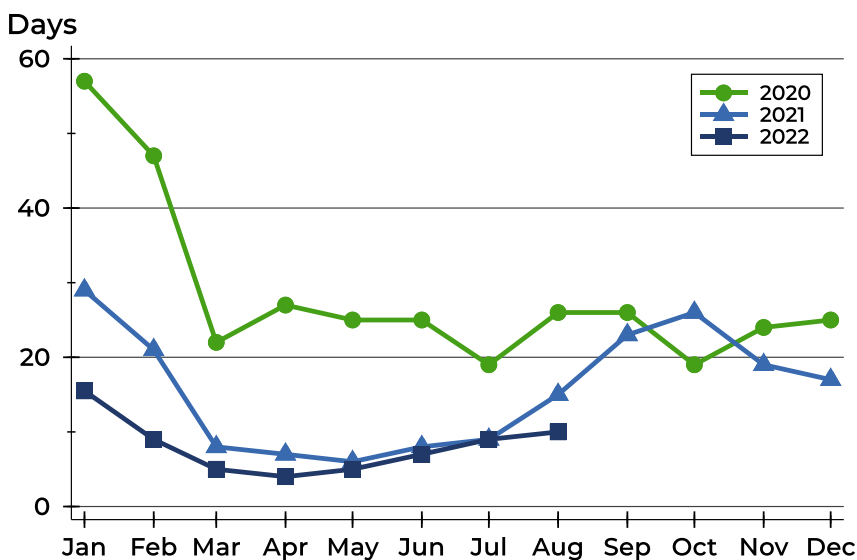
Riley County Pending Contracts Analysis

Average DOM



Month	2020	2021	2022
January	74	64	50
February	75	55	37
March	60	39	25
April	60	29	14
May	51	22	15
June	50	25	18
July	45	22	21
August	50	27	27
September	52	35	
October	48	40	
November	53	40	
December	52	44	

Median DOM



Month	2020	2021	2022
January	57	29	16
February	47	21	9
March	22	8	5
April	27	7	4
May	25	6	5
June	25	8	7
July	19	9	9
August	26	15	10
September	26	23	
October	19	26	
November	24	19	
December	25	17	