



**October
2023**

Flint Hills MLS Statistics



**FLINT HILLS
ASSOCIATION
OF REALTORS®**

Riley County Housing Report



Market Overview

Riley County Home Sales Fell in October

Total home sales in Riley County fell last month to 68 units, compared to 77 units in October 2022. Total sales volume was \$21.5 million, up from a year earlier.

The median sale price in October was \$304,500, up from \$240,000 a year earlier. Homes that sold in October were typically on the market for 21 days and sold for 100.0% of their list prices.

Riley County Active Listings Up at End of October

The total number of active listings in Riley County at the end of October was 142 units, up from 127 at the same point in 2022. This represents a 2.1 months' supply of homes available for sale. The median list price of homes on the market at the end of October was \$264,500.

During October, a total of 56 contracts were written up from 53 in October 2022. At the end of the month, there were 75 contracts still pending.

Report Contents

- Summary Statistics – Page 2
- Closed Listing Analysis – Page 3
- Active Listings Analysis – Page 7
- Months' Supply Analysis – Page 11
- New Listings Analysis – Page 12
- Contracts Written Analysis – Page 15
- Pending Contracts Analysis – Page 19

Contact Information

Margaret Pendleton, Association Executive
 Flint Hills Association of REALTORS®
 205 S. Seth Child Road
 Manhattan, KS 66502
 785-776-1203
ae@flinthillsrealtors.net
www.flinthillsrealtors.net



**October
2023**

Flint Hills MLS Statistics



**FLINT HILLS
ASSOCIATION
OF REALTORS®**

Riley County Summary Statistics

October MLS Statistics Three-year History		Current Month			Year-to-Date		
		2023	2022	2021	2023	2022	2021
Home Sales		68	77	85	693	867	958
Change from prior year		-11.7%	-9.4%	9.0%	-20.1%	-9.5%	18.1%
Active Listings		142	127	185	N/A	N/A	N/A
Change from prior year		11.8%	-31.4%	-19.9%			
Months' Supply		2.1	1.4	2.0	N/A	N/A	N/A
Change from prior year		50.0%	-30.0%	-33.3%			
New Listings		63	60	73	842	993	1,181
Change from prior year		5.0%	-17.8%	-29.8%	-15.2%	-15.9%	10.5%
Contracts Written		56	53	88	722	850	1,009
Change from prior year		5.7%	-39.8%	31.3%	-15.1%	-15.8%	20.0%
Pending Contracts		75	86	155	N/A	N/A	N/A
Change from prior year		-12.8%	-44.5%	33.6%			
Sales Volume (1,000s)		21,522	19,802	21,011	193,602	215,355	223,738
Change from prior year		8.7%	-5.8%	23.4%	-10.1%	-3.7%	28.0%
Average	Sale Price	316,505	257,164	247,194	279,368	248,391	233,547
	Change from prior year	23.1%	4.0%	13.3%	12.5%	6.4%	8.4%
	List Price of Actives	302,591	294,245	281,756	N/A	N/A	N/A
	Change from prior year	2.8%	4.4%	11.1%			
	Days on Market	41	29	36	31	25	34
Change from prior year	41.4%	-19.4%	-28.0%	24.0%	-26.5%	-42.4%	
	Percent of List	98.2%	97.4%	98.2%	98.8%	99.6%	99.2%
Change from prior year	0.8%	-0.8%	0.2%	-0.8%	0.4%	1.3%	
	Percent of Original	96.8%	95.9%	96.2%	97.6%	98.6%	98.3%
Change from prior year	0.9%	-0.3%	0.4%	-1.0%	0.3%	2.5%	
Median	Sale Price	304,500	240,000	215,000	245,000	228,000	210,288
	Change from prior year	26.9%	11.6%	7.1%	7.5%	8.4%	9.0%
	List Price of Actives	264,500	247,000	209,000	N/A	N/A	N/A
	Change from prior year	7.1%	18.2%	2.0%			
	Days on Market	21	14	22	9	7	10
Change from prior year	50.0%	-36.4%	-12.0%	28.6%	-30.0%	-65.5%	
	Percent of List	100.0%	98.1%	100.0%	100.0%	100.0%	100.0%
Change from prior year	1.9%	-1.9%	1.2%	0.0%	0.0%	1.5%	
	Percent of Original	99.7%	97.4%	99.0%	99.8%	100.0%	100.0%
Change from prior year	2.4%	-1.6%	1.2%	-0.2%	0.0%	2.6%	

Note: Year-to-date statistics cannot be calculated for Active Listings, Months' Supply and Pending Contracts.



Riley County Closed Listings Analysis

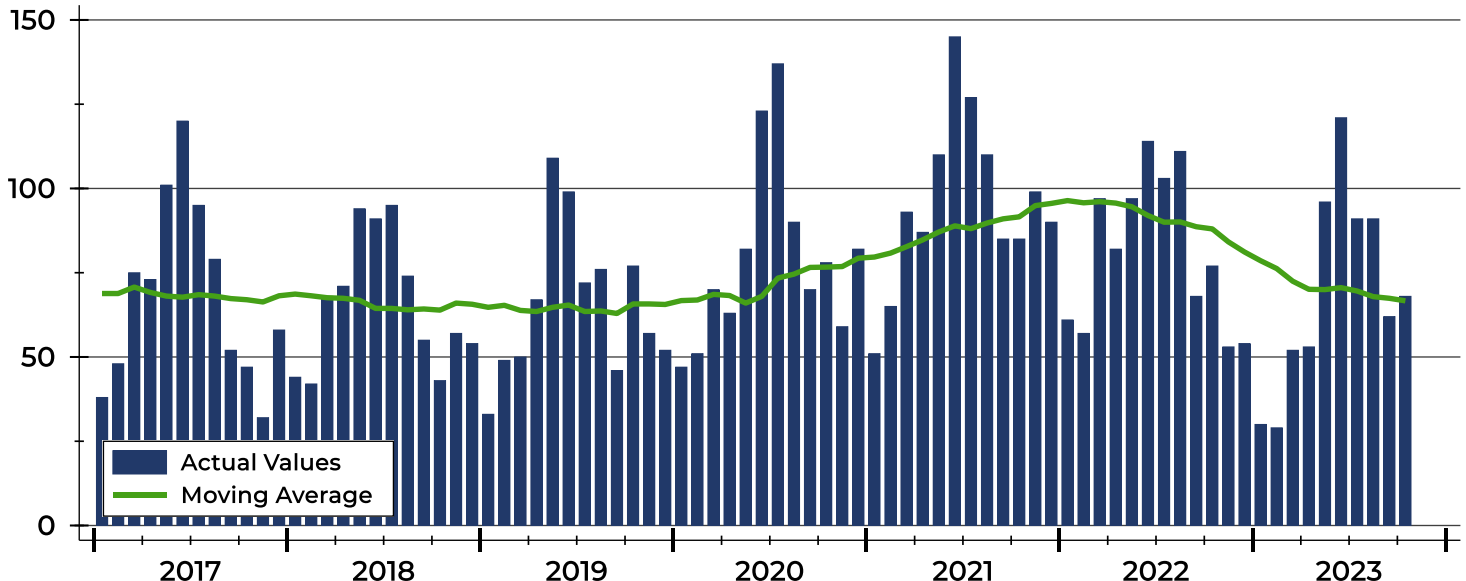
Summary Statistics for Closed Listings		2023	October 2022	Change	2023	Year-to-Date 2022	Change
Closed Listings		68	77	-11.7%	693	867	-20.1%
Volume (1,000s)		21,522	19,802	8.7%	193,602	215,355	-10.1%
Months' Supply		2.1	1.4	50.0%	N/A	N/A	N/A
Average	Sale Price	316,505	257,164	23.1%	279,368	248,391	12.5%
	Days on Market	41	29	41.4%	31	25	24.0%
	Percent of List	98.2%	97.4%	0.8%	98.8%	99.6%	-0.8%
	Percent of Original	96.8%	95.9%	0.9%	97.6%	98.6%	-1.0%
Median	Sale Price	304,500	240,000	26.9%	245,000	228,000	7.5%
	Days on Market	21	14	50.0%	9	7	28.6%
	Percent of List	100.0%	98.1%	1.9%	100.0%	100.0%	0.0%
	Percent of Original	99.7%	97.4%	2.4%	99.8%	100.0%	-0.2%

A total of 68 homes sold in Riley County in October, down from 77 units in October 2022. Total sales volume rose to \$21.5 million compared to \$19.8 million in the previous year.

The median sales price in October was \$304,500, up 26.9% compared to the prior year. Median days on market was 21 days, up from 8 days in September, and up from 14 in October 2022.

History of Closed Listings

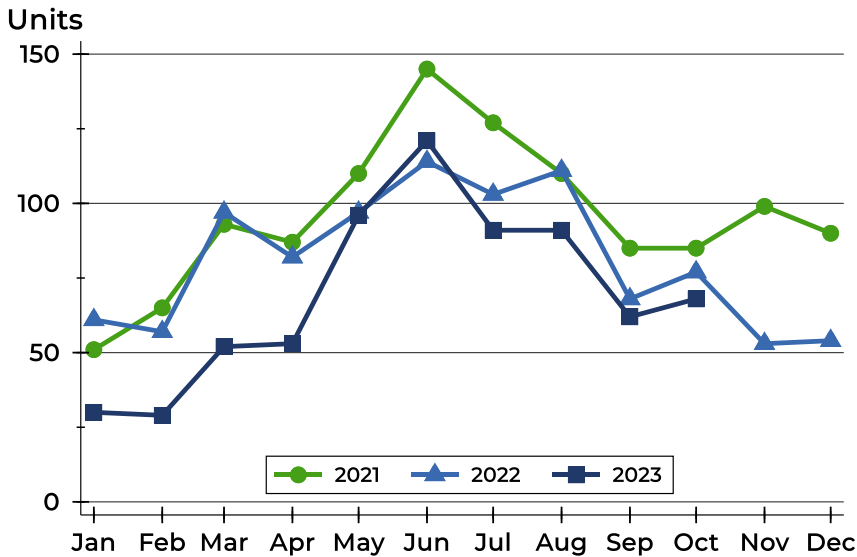
Units





Riley County Closed Listings Analysis

Closed Listings by Month



Month	2021	2022	2023
January	51	61	30
February	65	57	29
March	93	97	52
April	87	82	53
May	110	97	96
June	145	114	121
July	127	103	91
August	110	111	91
September	85	68	62
October	85	77	68
November	99	53	
December	90	54	

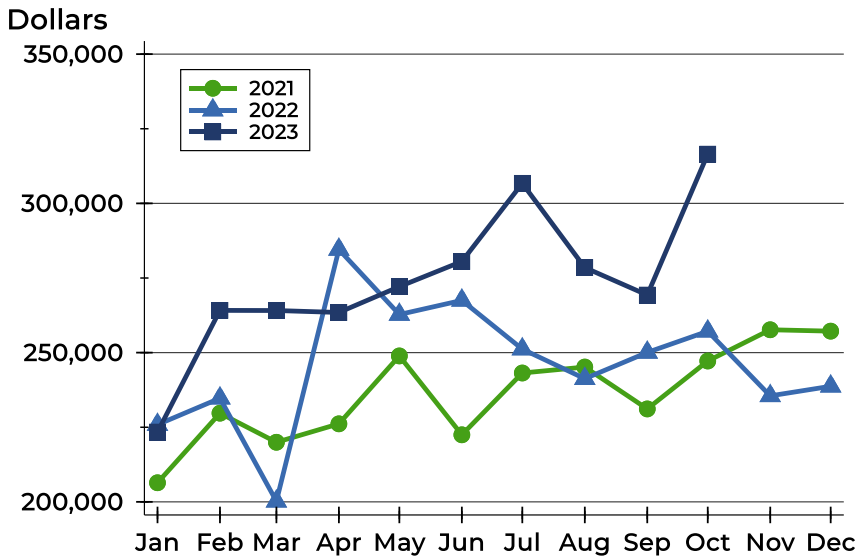
Closed Listings by Price Range

Price Range	Sales		Months' Supply	Sale Price		Days on Market		Price as % of List		Price as % of Orig.	
	Number	Percent		Average	Median	Avg.	Med.	Avg.	Med.	Avg.	Med.
Below \$25,000	1	1.5%	0.0	22,500	22,500	11	11	75.0%	75.0%	75.0%	75.0%
\$25,000-\$49,999	0	0.0%	N/A	N/A	N/A	N/A	N/A	N/A	N/A	N/A	N/A
\$50,000-\$99,999	0	0.0%	N/A	N/A	N/A	N/A	N/A	N/A	N/A	N/A	N/A
\$100,000-\$124,999	1	1.5%	3.3	112,000	112,000	18	18	100.0%	100.0%	100.0%	100.0%
\$125,000-\$149,999	2	2.9%	2.0	133,700	133,700	3	3	93.8%	93.8%	93.8%	93.8%
\$150,000-\$174,999	8	11.8%	2.4	164,581	166,125	16	9	97.3%	99.6%	96.4%	99.6%
\$175,000-\$199,999	5	7.4%	1.3	183,700	181,000	9	3	99.7%	100.0%	99.1%	100.0%
\$200,000-\$249,999	8	11.8%	1.1	221,238	223,950	36	36	96.0%	96.7%	93.9%	95.1%
\$250,000-\$299,999	8	11.8%	2.3	269,300	262,500	28	23	98.6%	99.9%	97.3%	98.8%
\$300,000-\$399,999	21	30.9%	1.9	349,238	350,000	47	26	99.5%	100.0%	97.5%	100.0%
\$400,000-\$499,999	10	14.7%	2.4	437,300	432,500	87	67	99.9%	100.0%	98.6%	100.0%
\$500,000-\$749,999	2	2.9%	3.2	599,500	599,500	85	85	100.0%	100.0%	100.0%	100.0%
\$750,000-\$999,999	1	1.5%	4.5	815,000	815,000	5	5	95.9%	95.9%	95.9%	95.9%
\$1,000,000 and up	1	1.5%	12.0	1,240,000	1,240,000	45	45	95.5%	95.5%	95.5%	95.5%



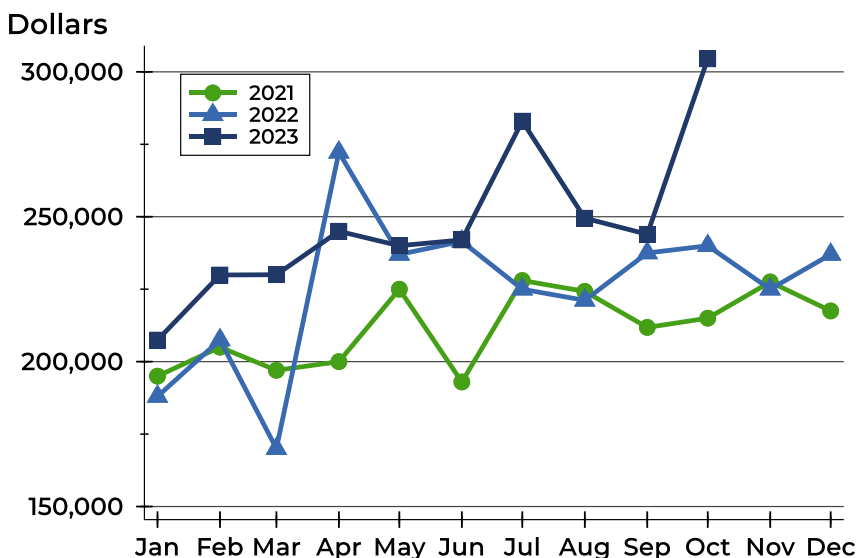
Riley County Closed Listings Analysis

Average Price



Month	2021	2022	2023
January	206,402	225,875	223,398
February	229,715	234,723	264,153
March	219,973	200,196	264,104
April	226,152	284,561	263,458
May	248,898	262,771	272,119
June	222,470	267,511	280,542
July	243,175	251,180	306,725
August	245,172	241,275	278,493
September	231,140	250,074	269,304
October	247,194	257,164	316,505
November	257,661	235,522	
December	257,195	238,726	

Median Price

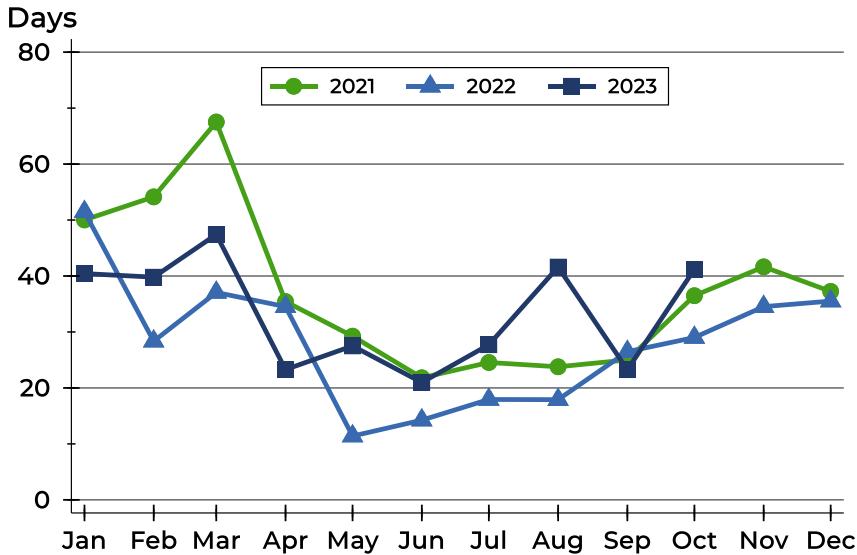


Month	2021	2022	2023
January	195,000	188,000	207,450
February	205,000	207,500	229,900
March	197,000	170,000	230,000
April	200,000	272,250	245,000
May	225,000	237,000	240,000
June	193,000	241,500	242,000
July	228,000	225,000	283,000
August	224,250	221,159	249,500
September	211,819	237,500	243,950
October	215,000	240,000	304,500
November	227,500	225,000	
December	217,500	237,000	



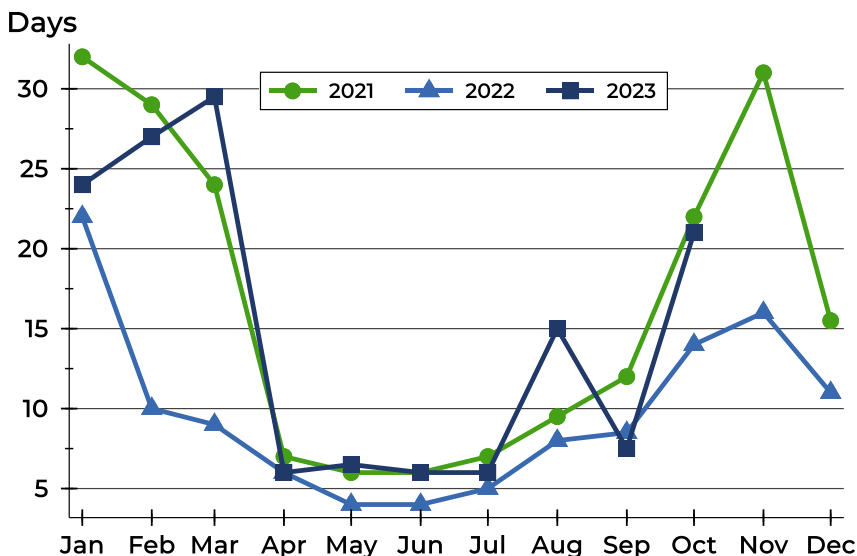
Riley County Closed Listings Analysis

Average DOM



Month	2021	2022	2023
January	50	51	40
February	54	28	40
March	68	37	47
April	35	35	23
May	29	11	28
June	22	14	21
July	25	18	28
August	24	18	42
September	25	26	23
October	36	29	41
November	42	35	
December	37	36	

Median DOM



Month	2021	2022	2023
January	32	22	24
February	29	10	27
March	24	9	30
April	7	6	6
May	6	4	7
June	6	4	6
July	7	5	6
August	10	8	15
September	12	9	8
October	22	14	21
November	31	16	
December	16	11	



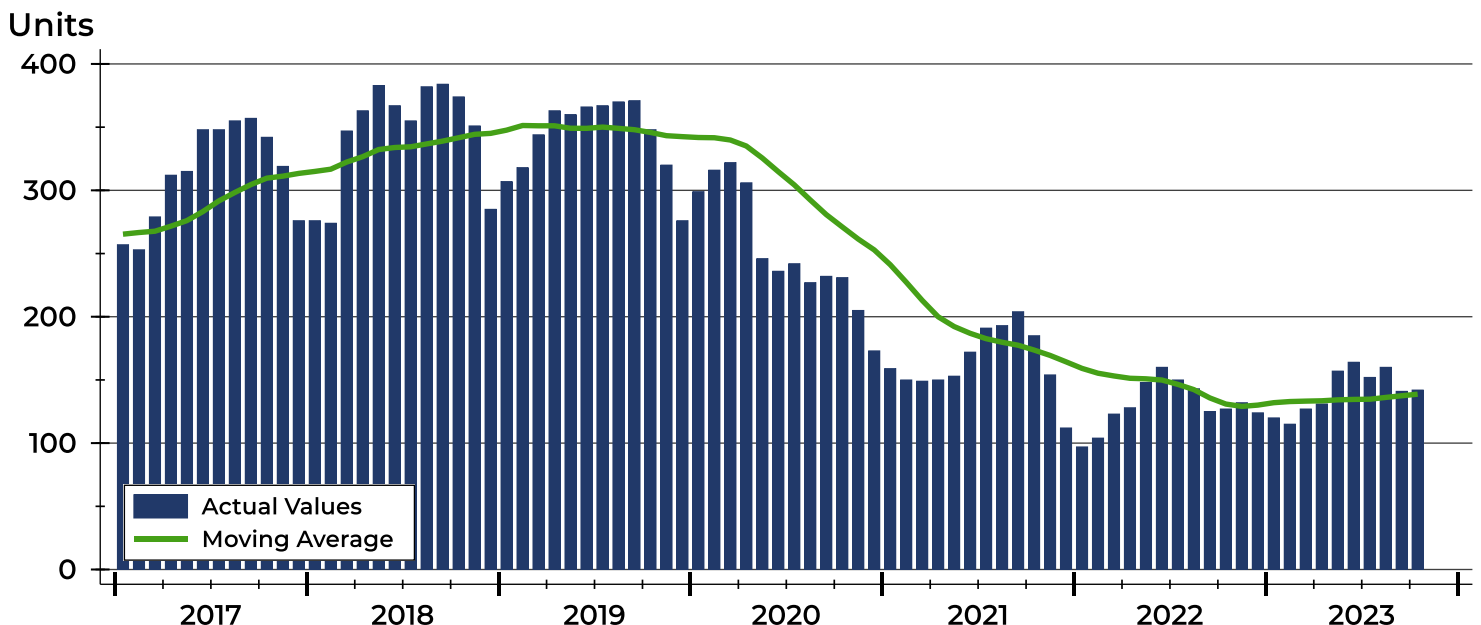
Riley County Active Listings Analysis

Summary Statistics for Active Listings		2023	End of October 2022	Change
Active Listings		142	127	11.8%
Volume (1,000s)		42,968	37,369	15.0%
Months' Supply		2.1	1.4	50.0%
Average	List Price	302,591	294,245	2.8%
	Days on Market	76	72	5.6%
	Percent of Original	97.2%	97.6%	-0.4%
Median	List Price	264,500	247,000	7.1%
	Days on Market	55	57	-3.5%
	Percent of Original	100.0%	100.0%	0.0%

A total of 142 homes were available for sale in Riley County at the end of October. This represents a 2.1 months' supply of active listings.

The median list price of homes on the market at the end of October was \$264,500, up 7.1% from 2022. The typical time on market for active listings was 55 days, down from 57 days a year earlier.

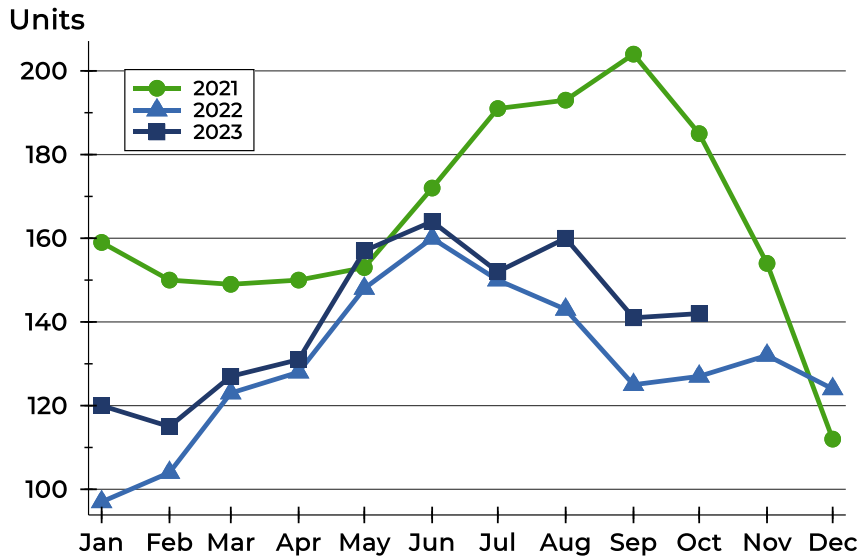
History of Active Listings





Riley County Active Listings Analysis

Active Listings by Month



Month	2021	2022	2023
January	159	97	120
February	150	104	115
March	149	123	127
April	150	128	131
May	153	148	157
June	172	160	164
July	191	150	152
August	193	143	160
September	204	125	141
October	185	127	142
November	154	132	
December	112	124	

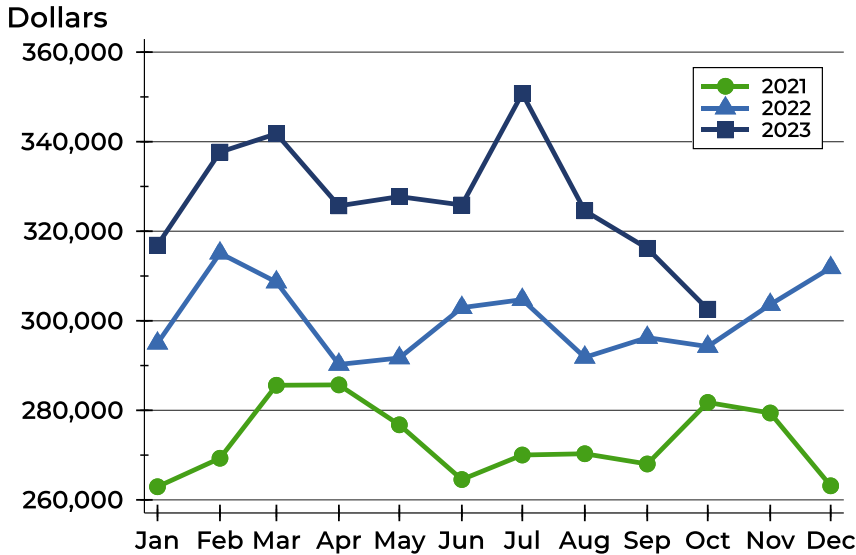
Active Listings by Price Range

Price Range	Active Listings Number	Active Listings Percent	Months' Supply	List Price Average	List Price Median	Days on Market Avg.	Days on Market Med.	Price as % of Orig. Avg.	Price as % of Orig. Med.
Below \$25,000	0	0.0%	0.0	N/A	N/A	N/A	N/A	N/A	N/A
\$25,000-\$49,999	1	0.7%	N/A	49,900	49,900	57	57	71.4%	71.4%
\$50,000-\$99,999	11	7.7%	N/A	78,582	75,000	76	63	93.2%	92.8%
\$100,000-\$124,999	10	7.0%	3.3	113,380	115,000	69	39	95.5%	100.0%
\$125,000-\$149,999	6	4.2%	2.0	134,333	131,500	62	59	98.8%	100.0%
\$150,000-\$174,999	15	10.6%	2.4	163,693	165,500	48	52	97.1%	100.0%
\$175,000-\$199,999	9	6.3%	1.3	187,611	185,000	47	27	99.2%	100.0%
\$200,000-\$249,999	16	11.3%	1.1	231,491	233,000	58	47	98.8%	100.0%
\$250,000-\$299,999	21	14.8%	2.3	280,843	282,500	66	64	96.7%	98.6%
\$300,000-\$399,999	27	19.0%	1.9	358,348	359,900	74	42	97.8%	100.0%
\$400,000-\$499,999	11	7.7%	2.4	452,027	450,000	111	83	97.9%	100.0%
\$500,000-\$749,999	10	7.0%	3.2	583,766	580,000	87	94	100.2%	100.0%
\$750,000-\$999,999	3	2.1%	4.5	936,000	925,000	276	146	91.1%	93.4%
\$1,000,000 and up	2	1.4%	12.0	1,537,500	1,537,500	218	218	100.0%	100.0%



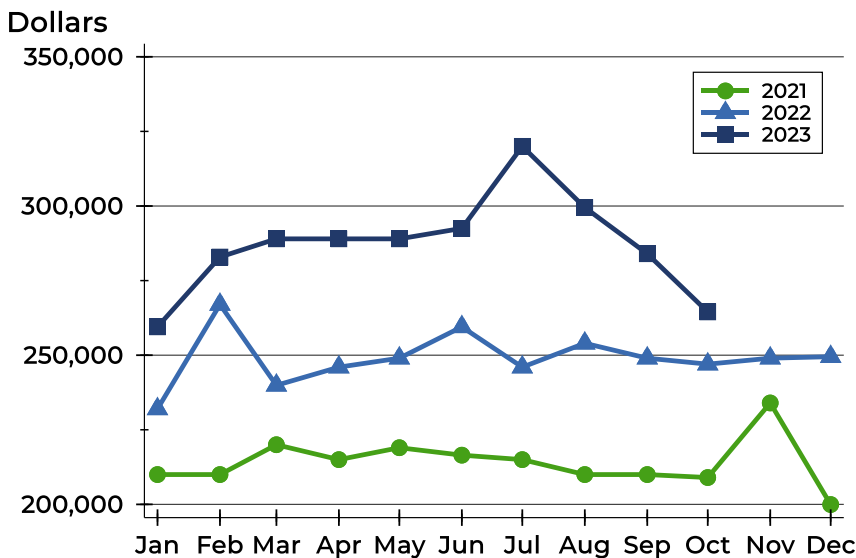
Riley County Active Listings Analysis

Average Price



Month	2021	2022	2023
January	262,929	294,980	316,889
February	269,299	315,098	337,680
March	285,597	308,649	341,768
April	285,687	290,244	325,675
May	276,770	291,693	327,740
June	264,539	302,934	325,855
July	270,021	304,729	350,757
August	270,304	291,827	324,571
September	268,017	296,245	316,188
October	281,756	294,245	302,591
November	279,402	303,615	
December	263,144	311,834	

Median Price

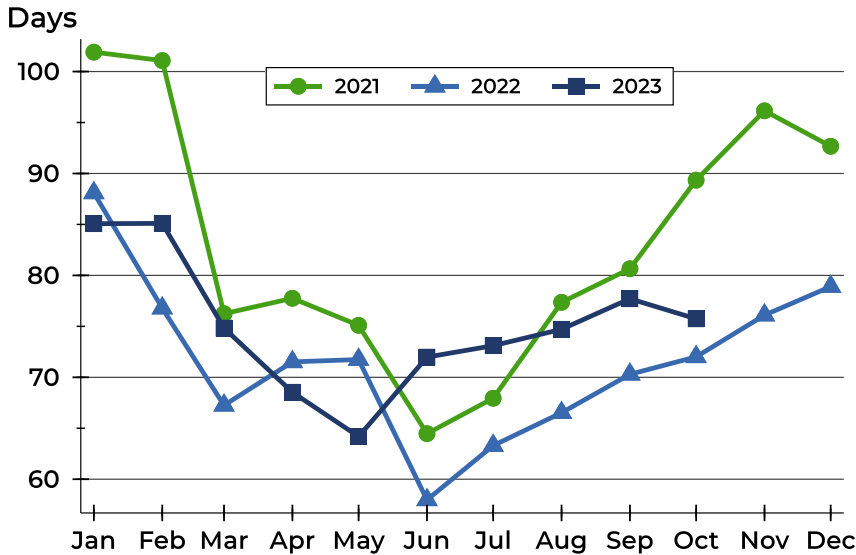


Month	2021	2022	2023
January	210,000	232,000	259,500
February	210,000	267,000	282,900
March	220,000	239,900	289,000
April	215,000	246,000	289,000
May	219,000	249,000	289,000
June	216,500	259,500	292,500
July	215,000	246,000	320,000
August	210,000	254,000	299,500
September	210,000	249,000	284,000
October	209,000	247,000	264,500
November	234,000	249,000	
December	199,950	249,500	



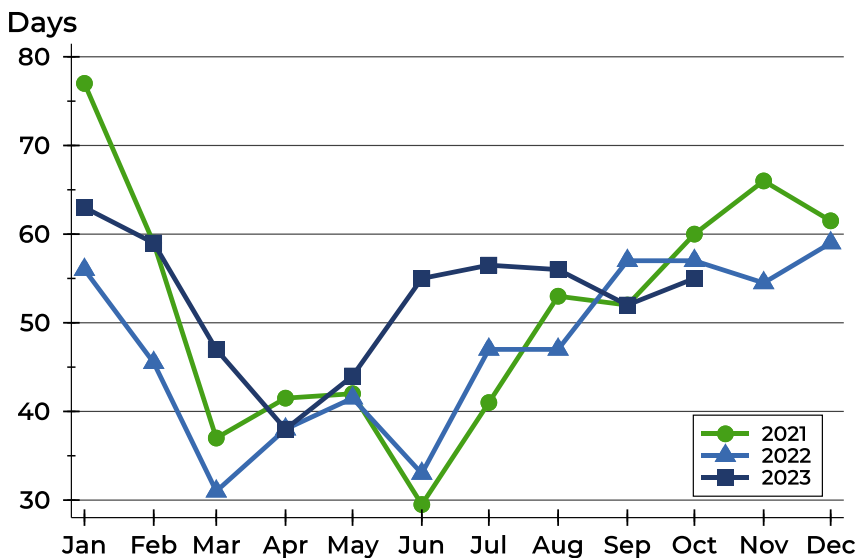
Riley County Active Listings Analysis

Average DOM



Month	2021	2022	2023
January	102	88	85
February	101	77	85
March	76	67	75
April	78	72	69
May	75	72	64
June	64	58	72
July	68	63	73
August	77	67	75
September	81	70	78
October	89	72	76
November	96	76	
December	93	79	

Median DOM

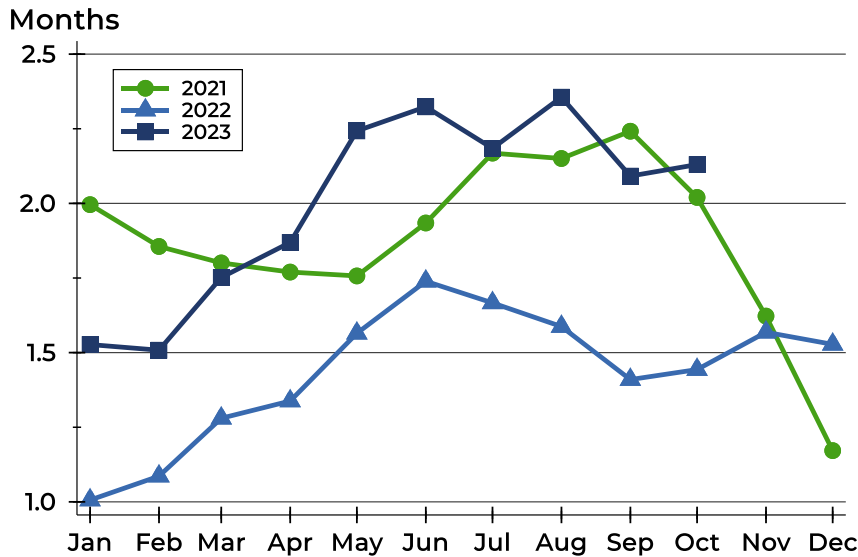


Month	2021	2022	2023
January	77	56	63
February	59	46	59
March	37	31	47
April	42	38	38
May	42	42	44
June	30	33	55
July	41	47	57
August	53	47	56
September	52	57	52
October	60	57	55
November	66	55	
December	62	59	



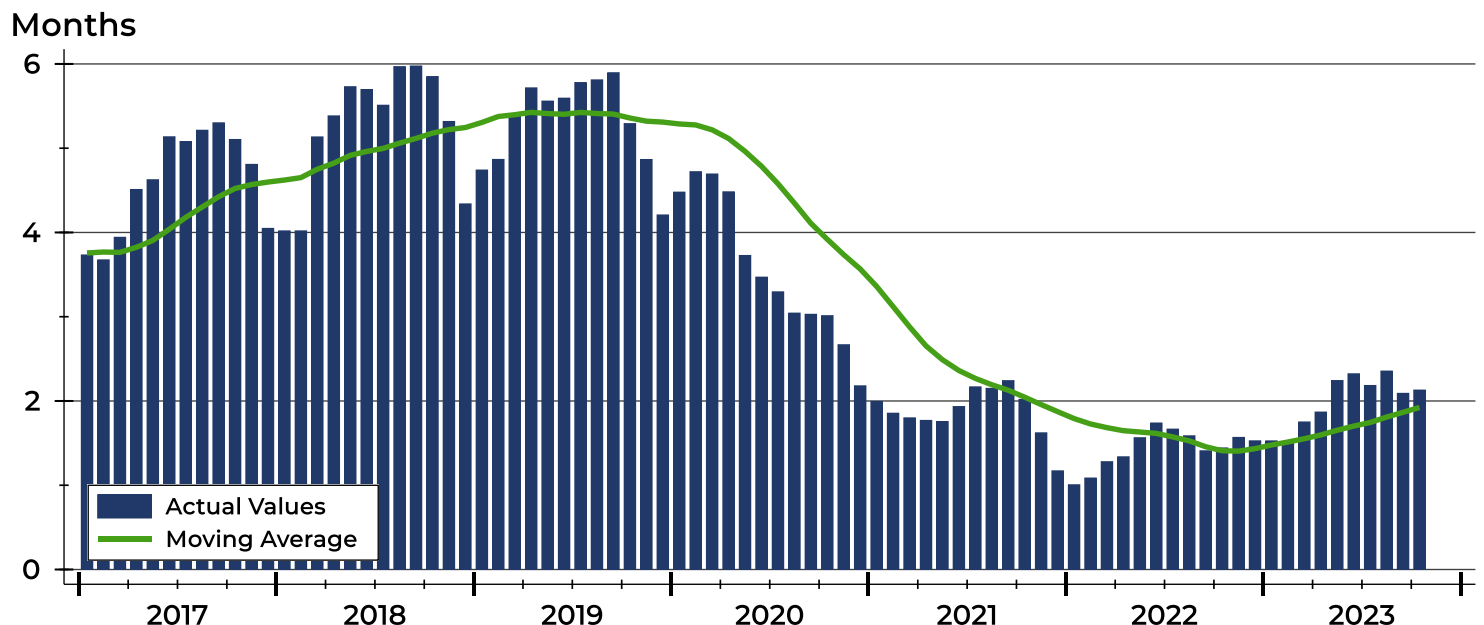
Riley County Months' Supply Analysis

Months' Supply by Month



Month	2021	2022	2023
January	2.0	1.0	1.5
February	1.9	1.1	1.5
March	1.8	1.3	1.8
April	1.8	1.3	1.9
May	1.8	1.6	2.2
June	1.9	1.7	2.3
July	2.2	1.7	2.2
August	2.2	1.6	2.4
September	2.2	1.4	2.1
October	2.0	1.4	2.1
November	1.6	1.6	1.6
December	1.2	1.5	1.5

History of Month's Supply





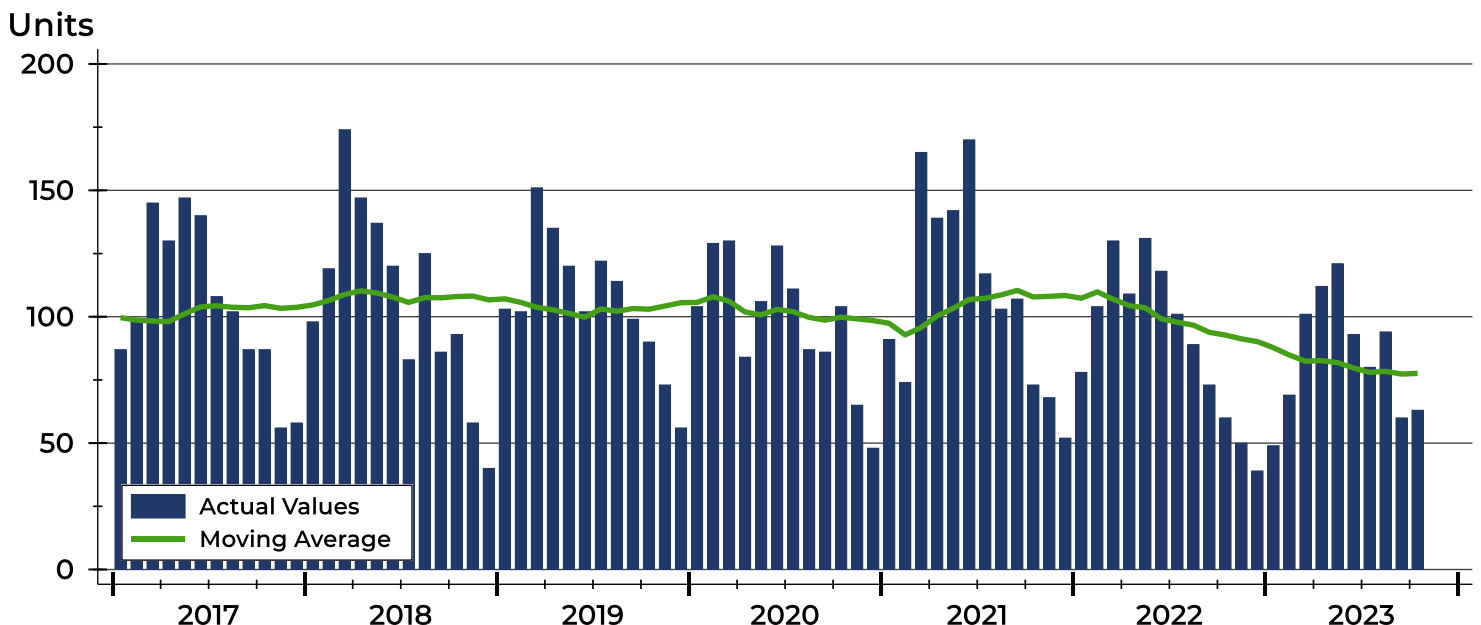
Riley County New Listings Analysis

Summary Statistics for New Listings		2023	October 2022	Change
Current Month	New Listings	63	60	5.0%
	Volume (1,000s)	17,538	16,304	7.6%
	Average List Price	278,381	271,739	2.4%
	Median List Price	250,000	229,500	8.9%
Year-to-Date	New Listings	842	993	-15.2%
	Volume (1,000s)	240,815	258,158	-6.7%
	Average List Price	286,003	259,978	10.0%
	Median List Price	255,000	235,000	8.5%

A total of 63 new listings were added in Riley County during October, up 5.0% from the same month in 2022. Year-to-date Riley County has seen 842 new listings.

The median list price of these homes was \$250,000 up from \$229,500 in 2022.

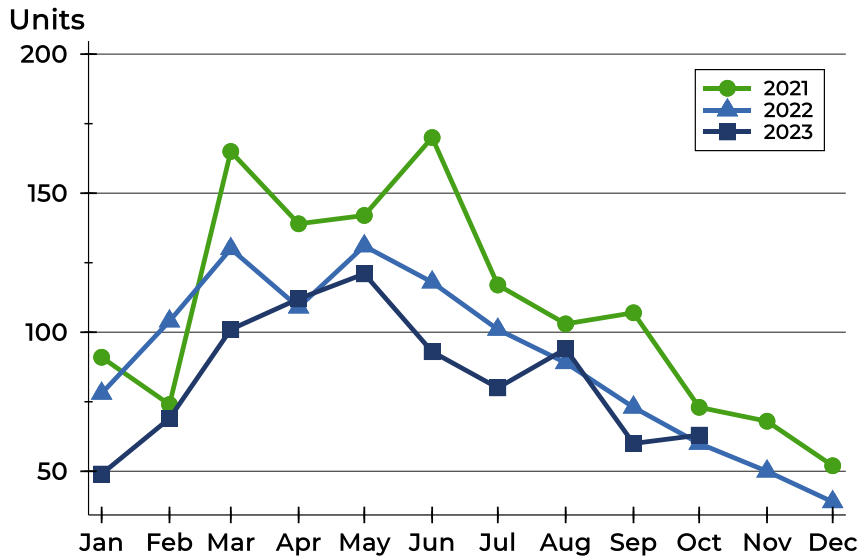
History of New Listings





Riley County New Listings Analysis

New Listings by Month



Month	2021	2022	2023
January	91	78	49
February	74	104	69
March	165	130	101
April	139	109	112
May	142	131	121
June	170	118	93
July	117	101	80
August	103	89	94
September	107	73	60
October	73	60	63
November	68	50	
December	52	39	

New Listings by Price Range

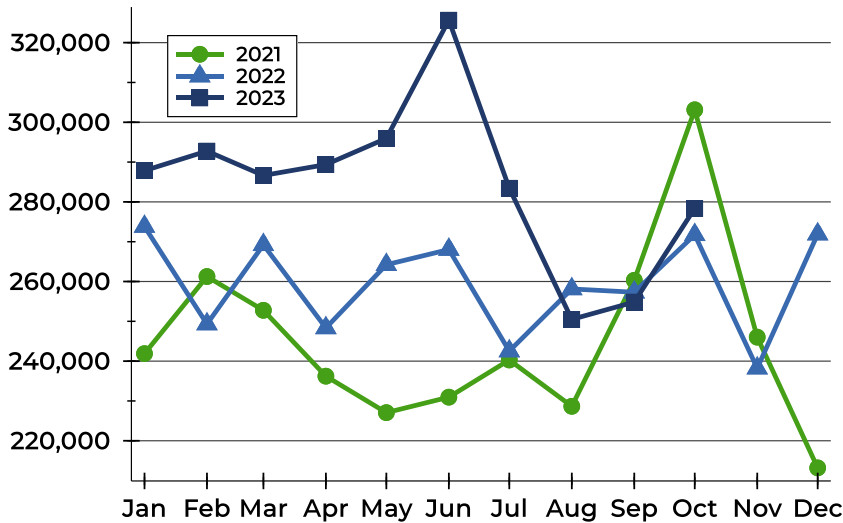
Price Range	New Listings		List Price		Days on Market		Price as % of Orig.	
	Number	Percent	Average	Median	Avg.	Med.	Avg.	Med.
Below \$25,000	0	0.0%	N/A	N/A	N/A	N/A	N/A	N/A
\$25,000-\$49,999	1	1.6%	49,900	49,900	21	21	84.6%	84.6%
\$50,000-\$99,999	2	3.2%	87,450	87,450	33	33	95.4%	95.4%
\$100,000-\$124,999	1	1.6%	115,000	115,000	34	34	88.5%	88.5%
\$125,000-\$149,999	2	3.2%	137,000	137,000	16	16	98.1%	98.1%
\$150,000-\$174,999	7	11.1%	167,629	169,000	11	10	99.6%	100.0%
\$175,000-\$199,999	6	9.5%	182,333	179,500	20	19	100.0%	100.0%
\$200,000-\$249,999	11	17.5%	226,577	225,000	13	10	99.6%	100.0%
\$250,000-\$299,999	11	17.5%	274,350	275,000	8	6	100.4%	100.0%
\$300,000-\$399,999	14	22.2%	352,329	349,950	22	22	98.3%	100.0%
\$400,000-\$499,999	6	9.5%	449,000	444,750	12	12	99.8%	100.0%
\$500,000-\$749,999	1	1.6%	595,000	595,000	8	8	100.0%	100.0%
\$750,000-\$999,999	1	1.6%	925,000	925,000	23	23	100.0%	100.0%
\$1,000,000 and up	0	0.0%	N/A	N/A	N/A	N/A	N/A	N/A



Riley County New Listings Analysis

Average Price

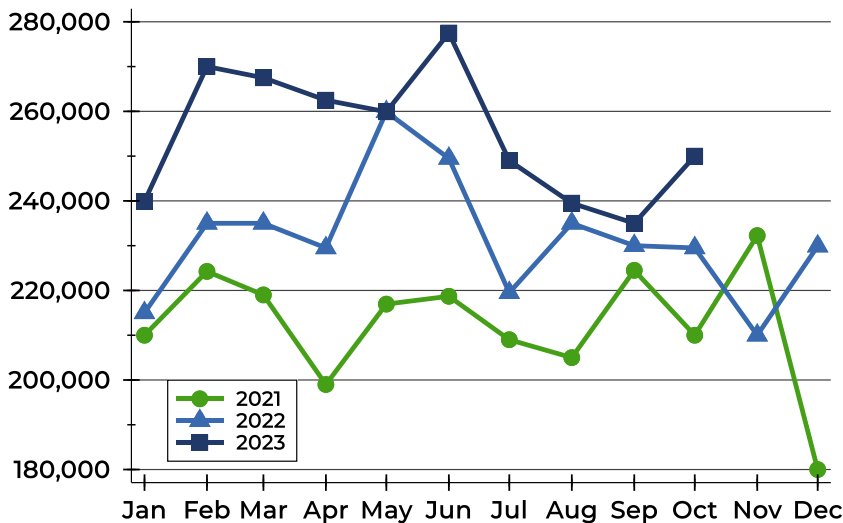
Dollars



Month	2021	2022	2023
January	241,888	273,821	287,852
February	261,254	249,317	292,767
March	252,772	269,234	286,643
April	236,225	248,339	289,376
May	227,067	264,226	295,962
June	230,952	268,046	325,656
July	240,298	242,536	283,440
August	228,658	258,135	250,495
September	260,308	257,311	254,847
October	303,145	271,739	278,381
November	246,026	238,235	
December	213,190	271,909	

Median Price

Dollars



Month	2021	2022	2023
January	210,000	215,000	239,900
February	224,250	235,000	270,000
March	219,000	235,000	267,500
April	199,000	229,500	262,500
May	216,950	259,900	259,900
June	218,700	249,500	277,500
July	209,000	219,500	249,000
August	205,000	235,000	239,500
September	224,500	230,000	235,000
October	209,999	229,500	250,000
November	232,250	210,000	
December	180,000	229,900	



Riley County Contracts Written Analysis

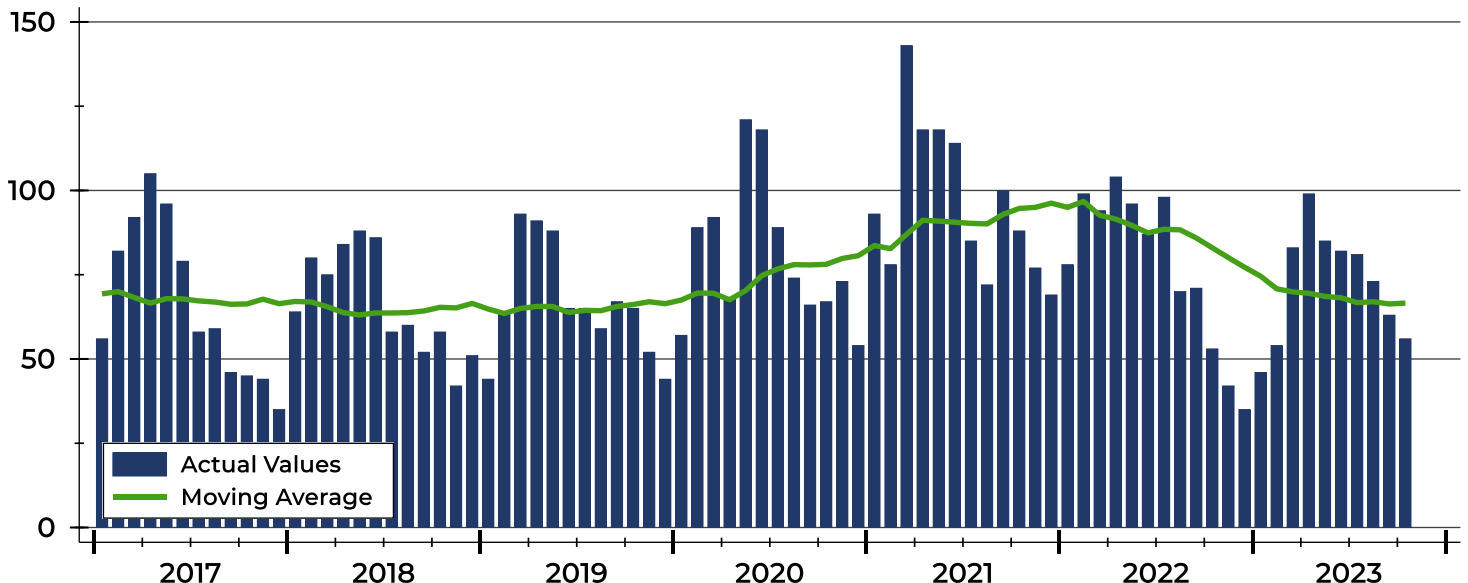
Summary Statistics for Contracts Written		2023	October 2022	Change	2023	Year-to-Date 2022	Change
Contracts Written		56	53	5.7%	722	850	-15.1%
Volume (1,000s)		14,829	13,441	10.3%	204,252	211,821	-3.6%
Average	Sale Price	264,800	253,600	4.4%	282,897	249,201	13.5%
	Days on Market	42	36	16.7%	32	24	33.3%
	Percent of Original	97.3%	95.5%	1.9%	97.7%	98.6%	-0.9%
Median	Sale Price	250,000	225,000	11.1%	249,000	228,500	9.0%
	Days on Market	16	19	-15.8%	10	7	42.9%
	Percent of Original	100.0%	97.3%	2.8%	100.0%	100.0%	0.0%

A total of 56 contracts for sale were written in Riley County during the month of October, up from 53 in 2022. The median list price of these homes was \$250,000, up from \$225,000 the prior year.

Half of the homes that went under contract in October were on the market less than 16 days, compared to 19 days in October 2022.

History of Contracts Written

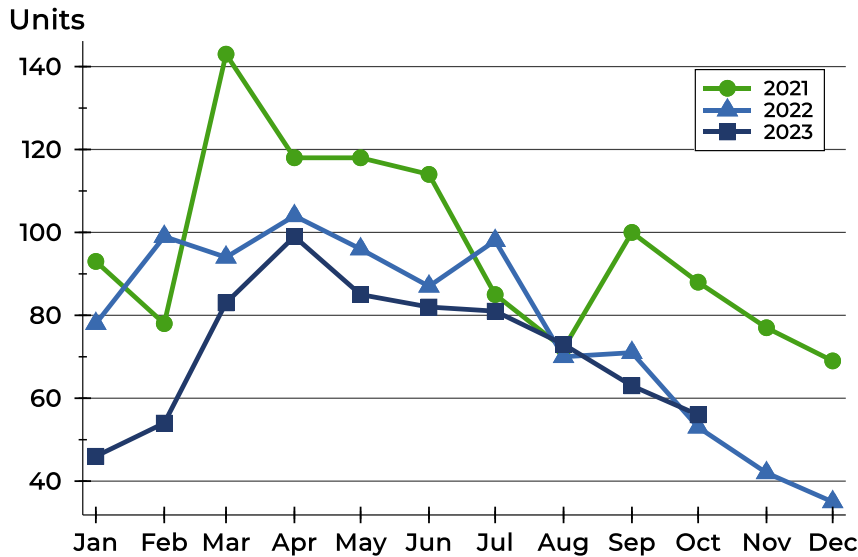
Units





Riley County Contracts Written Analysis

Contracts Written by Month



Month	2021	2022	2023
January	93	78	46
February	78	99	54
March	143	94	83
April	118	104	99
May	118	96	85
June	114	87	82
July	85	98	81
August	72	70	73
September	100	71	63
October	88	53	56
November	77	42	
December	69	35	

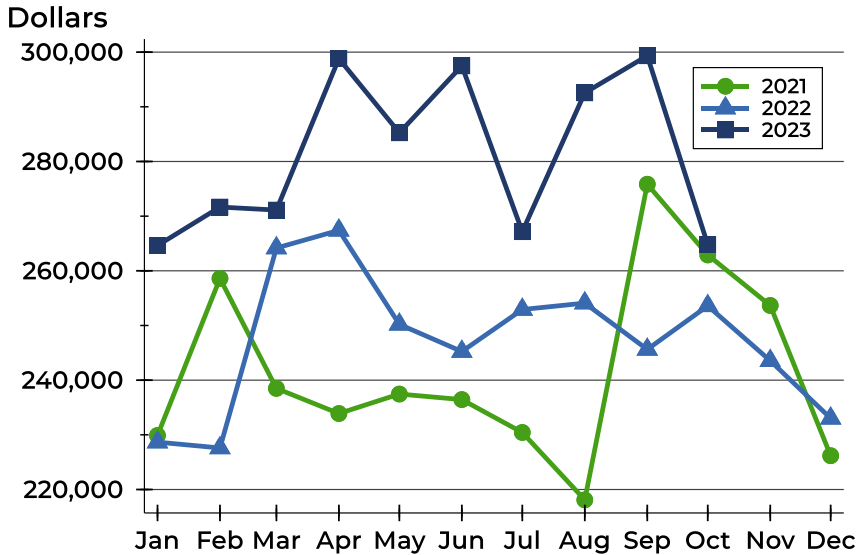
Contracts Written by Price Range

Price Range	Contracts Written		List Price		Days on Market		Price as % of Orig.	
	Number	Percent	Average	Median	Avg.	Med.	Avg.	Med.
Below \$25,000	0	0.0%	N/A	N/A	N/A	N/A	N/A	N/A
\$25,000-\$49,999	0	0.0%	N/A	N/A	N/A	N/A	N/A	N/A
\$50,000-\$99,999	1	1.8%	58,000	58,000	79	79	100.0%	100.0%
\$100,000-\$124,999	1	1.8%	111,000	111,000	48	48	95.3%	95.3%
\$125,000-\$149,999	6	10.7%	136,650	135,000	40	37	90.9%	89.7%
\$150,000-\$174,999	4	7.1%	165,975	167,000	18	6	99.2%	100.0%
\$175,000-\$199,999	5	8.9%	187,400	185,000	12	9	100.0%	100.0%
\$200,000-\$249,999	10	17.9%	224,040	215,450	35	14	99.1%	100.0%
\$250,000-\$299,999	14	25.0%	274,089	275,000	23	14	98.8%	100.0%
\$300,000-\$399,999	9	16.1%	347,539	349,900	96	87	94.4%	98.7%
\$400,000-\$499,999	4	7.1%	450,875	449,750	67	64	97.8%	97.9%
\$500,000-\$749,999	2	3.6%	615,000	615,000	30	30	98.8%	98.8%
\$750,000-\$999,999	0	0.0%	N/A	N/A	N/A	N/A	N/A	N/A
\$1,000,000 and up	0	0.0%	N/A	N/A	N/A	N/A	N/A	N/A



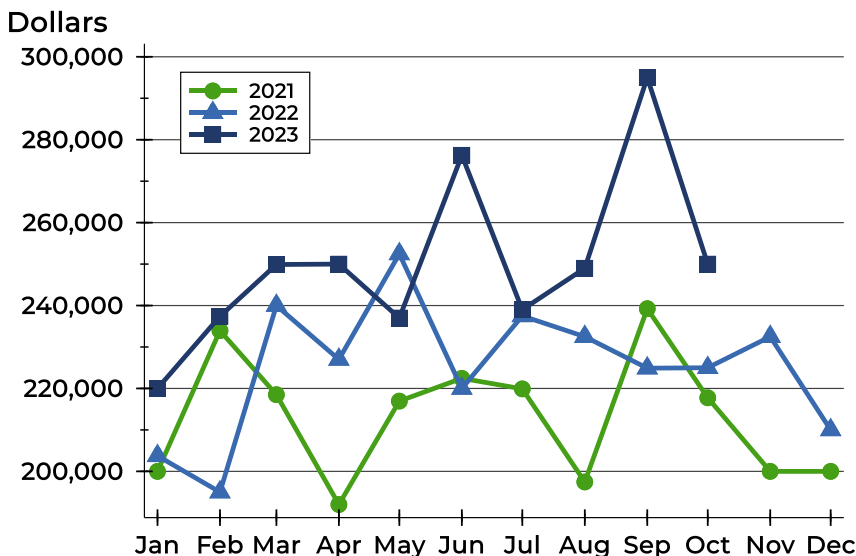
Riley County Contracts Written Analysis

Average Price



Month	2021	2022	2023
January	229,883	228,668	264,630
February	258,609	227,600	271,664
March	238,500	264,169	271,114
April	233,899	267,411	298,818
May	237,460	250,209	285,244
June	236,450	245,241	297,489
July	230,434	252,925	267,157
August	218,103	254,097	292,554
September	275,842	245,622	299,340
October	262,907	253,600	264,800
November	253,665	243,560	
December	226,182	233,020	

Median Price

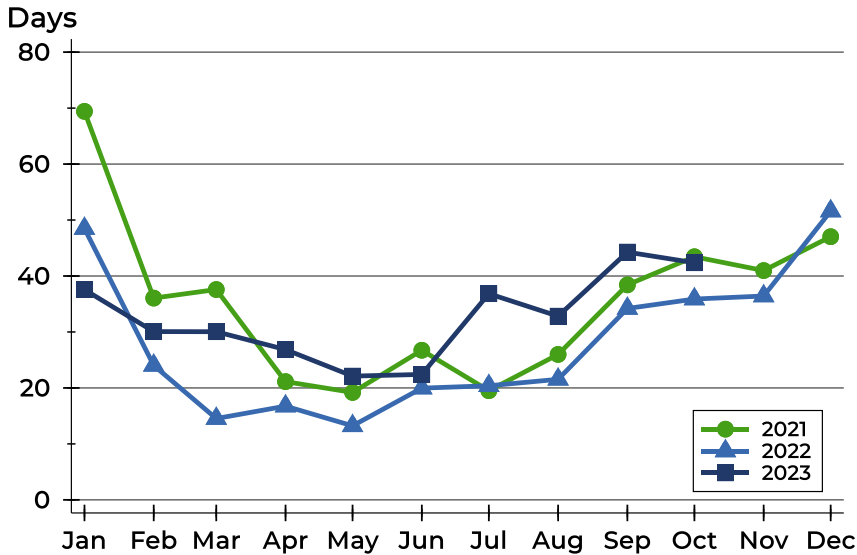


Month	2021	2022	2023
January	200,000	203,750	220,000
February	233,950	195,000	237,400
March	218,500	240,000	249,900
April	192,000	227,000	250,000
May	216,950	252,450	237,000
June	222,450	220,000	276,250
July	219,900	237,500	239,000
August	197,450	232,500	249,000
September	239,250	224,900	295,000
October	217,750	225,000	250,000
November	200,000	232,500	
December	200,000	210,000	



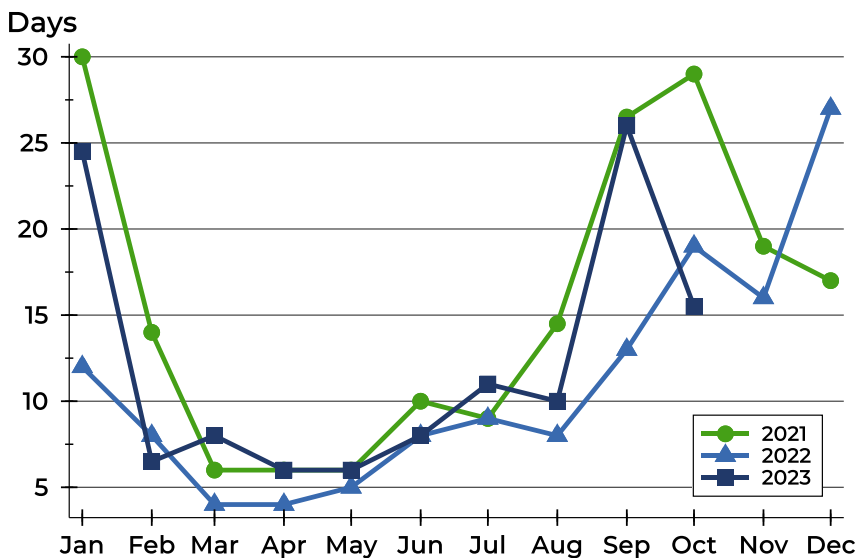
Riley County Contracts Written Analysis

Average DOM



Month	2021	2022	2023
January	69	48	38
February	36	24	30
March	38	15	30
April	21	17	27
May	19	13	22
June	27	20	22
July	20	20	37
August	26	22	33
September	38	34	44
October	43	36	42
November	41	36	
December	47	52	

Median DOM



Month	2021	2022	2023
January	30	12	25
February	14	8	7
March	6	4	8
April	6	4	6
May	6	5	6
June	10	8	8
July	9	9	11
August	15	8	10
September	27	13	26
October	29	19	16
November	19	16	
December	17	27	



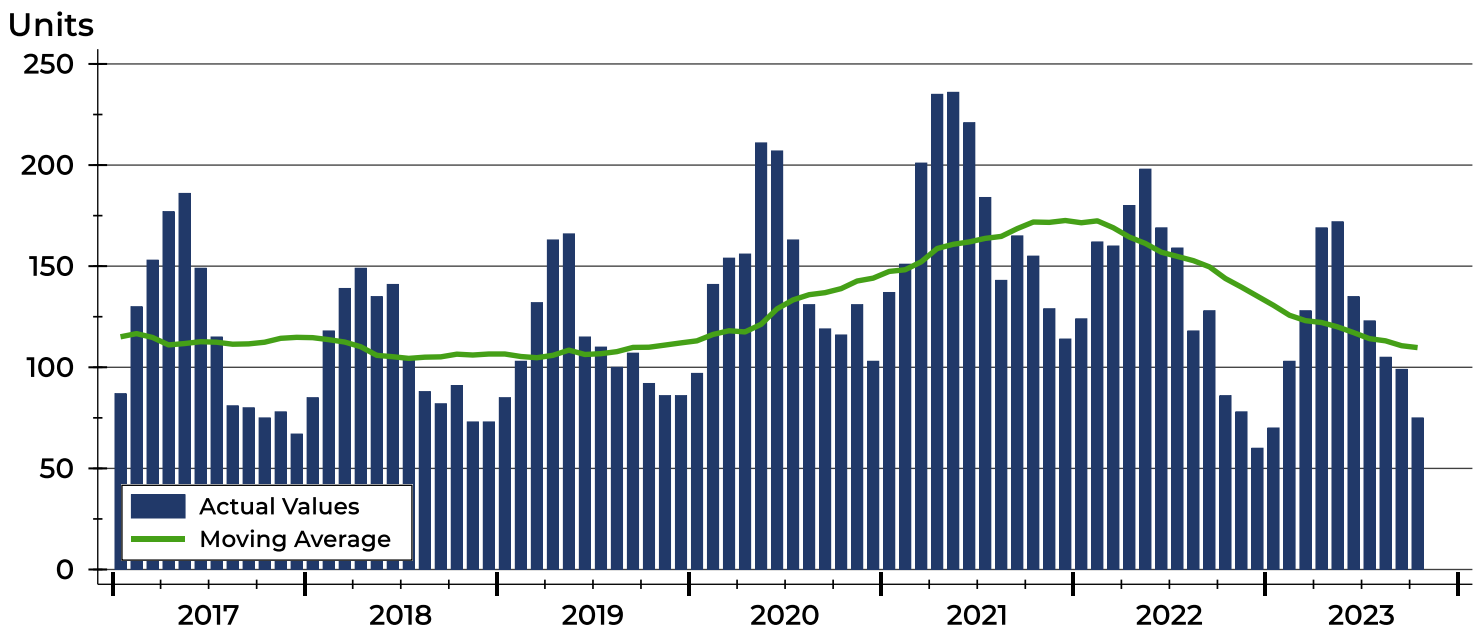
Riley County Pending Contracts Analysis

Summary Statistics for Pending Contracts		End of October		
		2023	2022	Change
Pending Contracts		75	86	-12.8%
Volume (1,000s)		19,918	21,904	-9.1%
Average	List Price	265,571	254,702	4.3%
	Days on Market	48	39	23.1%
	Percent of Original	97.5%	97.6%	-0.1%
Median	List Price	245,000	244,500	0.2%
	Days on Market	21	21	0.0%
	Percent of Original	100.0%	100.0%	0.0%

A total of 75 listings in Riley County had contracts pending at the end of October, down from 86 contracts pending at the end of October 2022.

Pending contracts reflect listings with a contract in place at the end of the month. In contrast, contracts written measures the number of listings put under contract during the month.

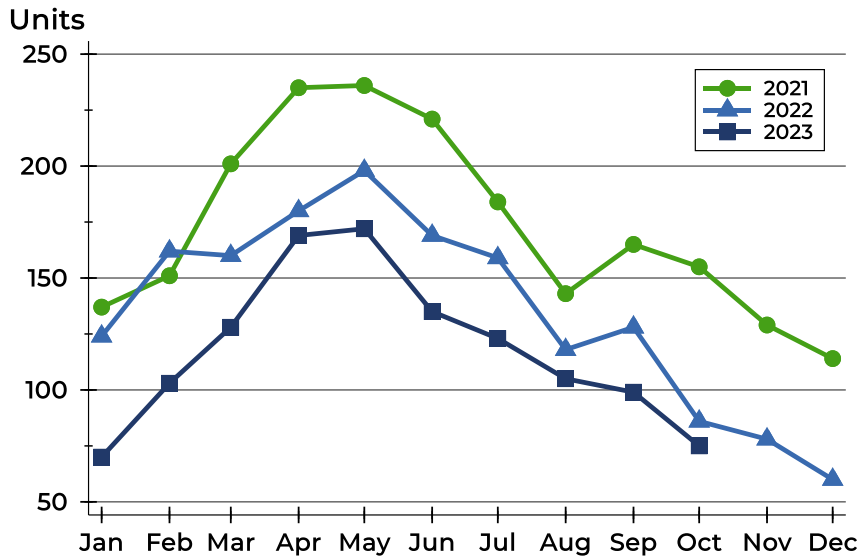
History of Pending Contracts





Riley County Pending Contracts Analysis

Pending Contracts by Month



Month	2021	2022	2023
January	137	124	70
February	151	162	103
March	201	160	128
April	235	180	169
May	236	198	172
June	221	169	135
July	184	159	123
August	143	118	105
September	165	128	99
October	155	86	75
November	129	78	
December	114	60	

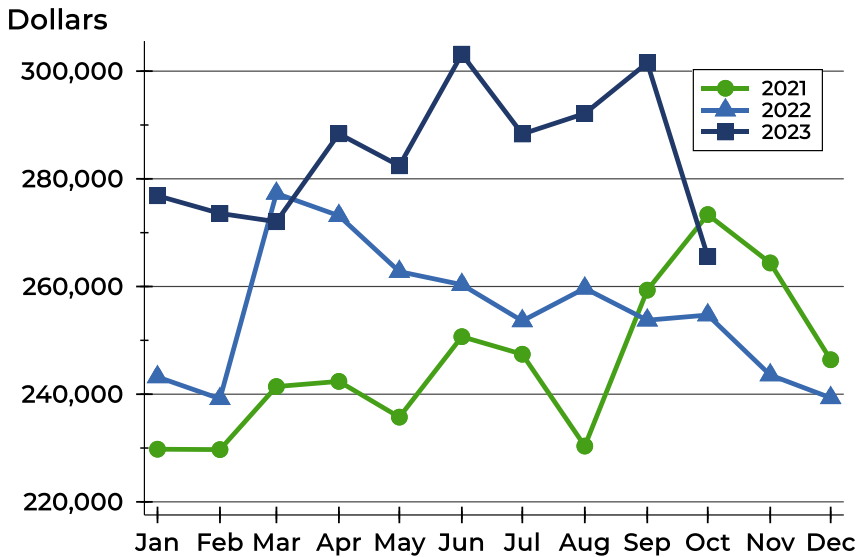
Pending Contracts by Price Range

Price Range	Pending Contracts		List Price		Days on Market		Price as % of Orig.	
	Number	Percent	Average	Median	Avg.	Med.	Avg.	Med.
Below \$25,000	0	0.0%	N/A	N/A	N/A	N/A	N/A	N/A
\$25,000-\$49,999	0	0.0%	N/A	N/A	N/A	N/A	N/A	N/A
\$50,000-\$99,999	1	1.3%	58,000	58,000	79	79	100.0%	100.0%
\$100,000-\$124,999	2	2.7%	113,000	113,000	46	46	96.8%	96.8%
\$125,000-\$149,999	9	12.0%	136,844	135,000	34	34	93.9%	100.0%
\$150,000-\$174,999	4	5.3%	167,225	167,000	10	6	100.0%	100.0%
\$175,000-\$199,999	5	6.7%	187,400	185,000	12	9	100.0%	100.0%
\$200,000-\$249,999	18	24.0%	224,450	217,900	46	14	98.7%	100.0%
\$250,000-\$299,999	12	16.0%	272,438	275,000	28	15	98.4%	100.0%
\$300,000-\$399,999	16	21.3%	341,234	336,500	74	59	94.9%	97.2%
\$400,000-\$499,999	6	8.0%	461,417	462,250	102	58	100.1%	100.0%
\$500,000-\$749,999	2	2.7%	629,364	629,364	54	54	100.0%	100.0%
\$750,000-\$999,999	0	0.0%	N/A	N/A	N/A	N/A	N/A	N/A
\$1,000,000 and up	0	0.0%	N/A	N/A	N/A	N/A	N/A	N/A



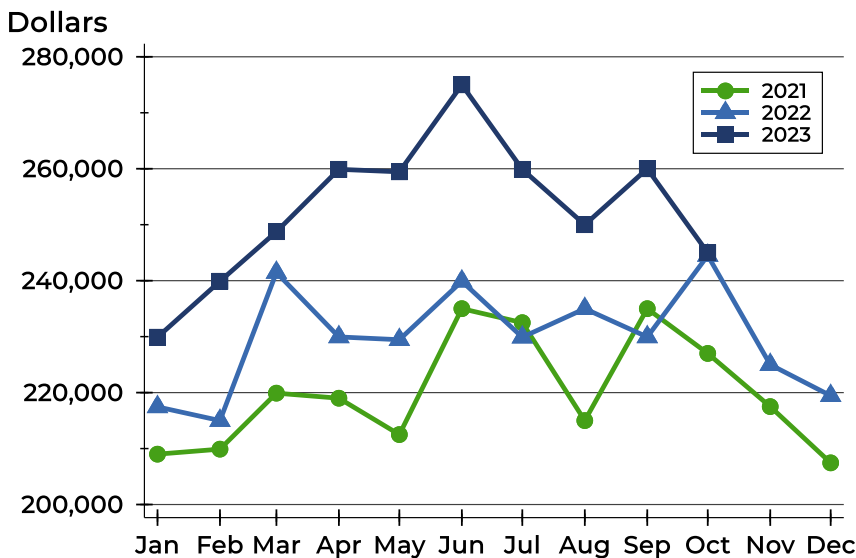
Riley County Pending Contracts Analysis

Average Price



Month	2021	2022	2023
January	229,781	243,204	276,864
February	229,712	239,149	273,576
March	241,420	277,287	272,038
April	242,377	273,152	288,375
May	235,738	262,768	282,422
June	250,688	260,348	303,159
July	247,424	253,615	288,326
August	230,364	259,667	292,135
September	259,319	253,740	301,537
October	273,363	254,702	265,571
November	264,377	243,560	
December	246,398	239,327	

Median Price

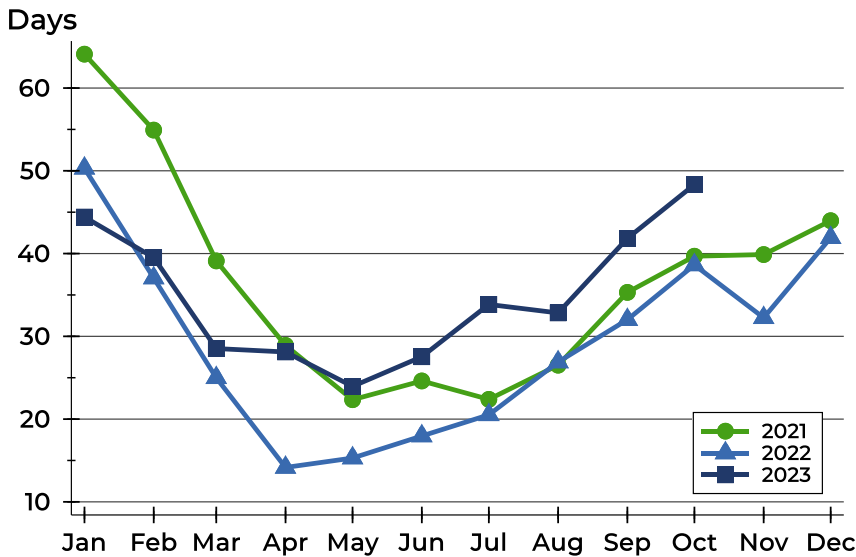


Month	2021	2022	2023
January	209,000	217,450	229,900
February	209,900	215,000	239,900
March	219,900	241,460	248,750
April	219,000	229,950	259,900
May	212,500	229,450	259,450
June	235,000	239,900	275,000
July	232,500	229,900	259,900
August	215,000	235,000	250,000
September	235,000	229,950	260,000
October	227,000	244,500	245,000
November	217,500	225,000	
December	207,450	219,450	



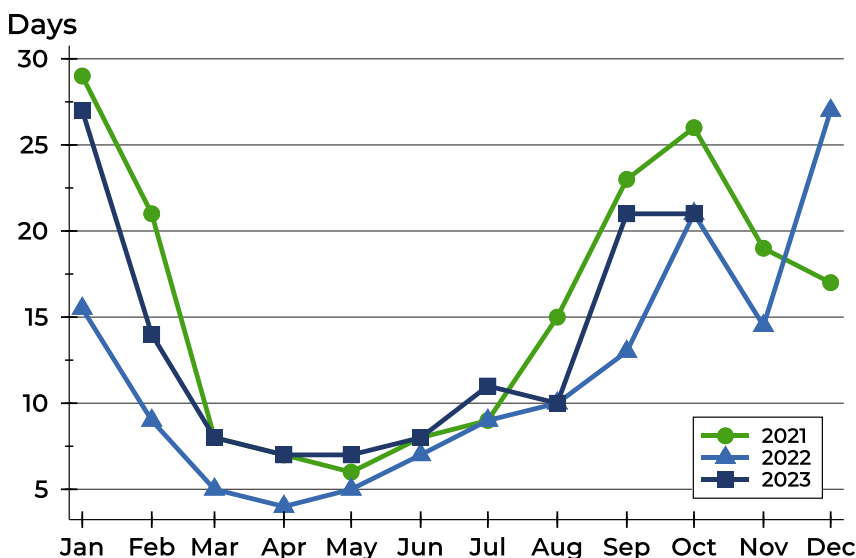
Riley County Pending Contracts Analysis

Average DOM



Month	2021	2022	2023
January	64	50	44
February	55	37	40
March	39	25	29
April	29	14	28
May	22	15	24
June	25	18	28
July	22	21	34
August	27	27	33
September	35	32	42
October	40	39	48
November	40	32	
December	44	42	

Median DOM



Month	2021	2022	2023
January	29	16	27
February	21	9	14
March	8	5	8
April	7	4	7
May	6	5	7
June	8	7	8
July	9	9	11
August	15	10	10
September	23	13	21
October	26	21	21
November	19	15	
December	17	27	