



## Riley County Housing Report



### Market Overview

#### Riley County Home Sales Fell in November

Total home sales in Riley County fell last month to 46 units, compared to 53 units in November 2022. Total sales volume was \$11.3 million, down from a year earlier.

The median sale price in November was \$240,000, up from \$225,000 a year earlier. Homes that sold in November were typically on the market for 24 days and sold for 98.3% of their list prices.

#### Riley County Active Listings Up at End of November

The total number of active listings in Riley County at the end of November was 144 units, up from 132 at the same point in 2022. This represents a 2.2 months' supply of homes available for sale. The median list price of homes on the market at the end of November was \$248,000.

During November, a total of 52 contracts were written up from 42 in November 2022. At the end of the month, there were 79 contracts still pending.

### Report Contents

- Summary Statistics – Page 2
- Closed Listing Analysis – Page 3
- Active Listings Analysis – Page 7
- Months' Supply Analysis – Page 11
- New Listings Analysis – Page 12
- Contracts Written Analysis – Page 15
- Pending Contracts Analysis – Page 19

### Contact Information

Margaret Pendleton, Association Executive  
 Flint Hills Association of REALTORS®  
 205 S. Seth Child Road  
 Manhattan, KS 66502  
 785-776-1203  
[ae@flinthillsrealtors.net](mailto:ae@flinthillsrealtors.net)  
[www.flinthillsrealtors.net](http://www.flinthillsrealtors.net)



## Riley County Summary Statistics

November MLS Statistics Three-year History		Current Month			Year-to-Date		
		2023	2022	2021	2023	2022	2021
<b>Home Sales</b>		<b>46</b>	<b>53</b>	<b>99</b>	<b>739</b>	<b>920</b>	<b>1,057</b>
Change from prior year		-13.2%	-46.5%	67.8%	-19.7%	-13.0%	21.5%
<b>Active Listings</b>		<b>144</b>	<b>132</b>	<b>154</b>	<b>N/A</b>	<b>N/A</b>	<b>N/A</b>
Change from prior year		9.1%	-14.3%	-24.9%			
<b>Months' Supply</b>		<b>2.2</b>	<b>1.6</b>	<b>1.6</b>	<b>N/A</b>	<b>N/A</b>	<b>N/A</b>
Change from prior year		37.5%	0.0%	-40.7%			
<b>New Listings</b>		<b>67</b>	<b>50</b>	<b>68</b>	<b>909</b>	<b>1,043</b>	<b>1,249</b>
Change from prior year		34.0%	-26.5%	4.6%	-12.8%	-16.5%	10.1%
<b>Contracts Written</b>		<b>52</b>	<b>42</b>	<b>77</b>	<b>772</b>	<b>892</b>	<b>1,086</b>
Change from prior year		23.8%	-45.5%	5.5%	-13.5%	-17.9%	18.8%
<b>Pending Contracts</b>		<b>79</b>	<b>78</b>	<b>129</b>	<b>N/A</b>	<b>N/A</b>	<b>N/A</b>
Change from prior year		1.3%	-39.5%	-1.5%			
<b>Sales Volume (1,000s)</b>		<b>11,300</b>	<b>12,483</b>	<b>25,508</b>	<b>204,902</b>	<b>227,838</b>	<b>249,246</b>
Change from prior year		-9.5%	-51.1%	93.9%	-10.1%	-8.6%	32.6%
Average	<b>Sale Price</b>	<b>245,660</b>	<b>235,522</b>	<b>257,661</b>	<b>277,270</b>	<b>247,650</b>	<b>235,806</b>
	Change from prior year	4.3%	-8.6%	15.5%	12.0%	5.0%	9.2%
	<b>List Price of Actives</b>	<b>292,564</b>	<b>303,615</b>	<b>279,402</b>	<b>N/A</b>	<b>N/A</b>	<b>N/A</b>
	Change from prior year	-3.6%	8.7%	8.8%			
	<b>Days on Market</b>	<b>41</b>	<b>35</b>	<b>42</b>	<b>32</b>	<b>26</b>	<b>35</b>
Change from prior year	17.1%	-16.7%	13.5%	23.1%	-25.7%	-38.6%	
	<b>Percent of List</b>	<b>97.8%</b>	<b>97.3%</b>	<b>98.5%</b>	<b>98.7%</b>	<b>99.4%</b>	<b>99.2%</b>
Change from prior year	0.5%	-1.2%	0.6%	-0.7%	0.2%	1.3%	
	<b>Percent of Original</b>	<b>95.2%</b>	<b>94.9%</b>	<b>96.6%</b>	<b>97.5%</b>	<b>98.4%</b>	<b>98.1%</b>
Change from prior year	0.3%	-1.8%	-0.7%	-0.9%	0.3%	2.2%	
Median	<b>Sale Price</b>	<b>240,000</b>	<b>225,000</b>	<b>227,500</b>	<b>245,000</b>	<b>226,000</b>	<b>215,000</b>
	Change from prior year	6.7%	-1.1%	11.0%	8.4%	5.1%	10.8%
	<b>List Price of Actives</b>	<b>248,000</b>	<b>249,000</b>	<b>234,000</b>	<b>N/A</b>	<b>N/A</b>	<b>N/A</b>
	Change from prior year	-0.4%	6.4%	20.6%			
	<b>Days on Market</b>	<b>24</b>	<b>16</b>	<b>31</b>	<b>10</b>	<b>7</b>	<b>12</b>
Change from prior year	50.0%	-48.4%	82.4%	42.9%	-41.7%	-57.1%	
	<b>Percent of List</b>	<b>98.3%</b>	<b>98.5%</b>	<b>100.0%</b>	<b>100.0%</b>	<b>100.0%</b>	<b>100.0%</b>
Change from prior year	-0.2%	-1.5%	0.9%	0.0%	0.0%	1.5%	
	<b>Percent of Original</b>	<b>97.2%</b>	<b>96.7%</b>	<b>97.9%</b>	<b>99.5%</b>	<b>100.0%</b>	<b>100.0%</b>
Change from prior year	0.5%	-1.2%	0.0%	-0.5%	0.0%	2.5%	

Note: Year-to-date statistics cannot be calculated for Active Listings, Months' Supply and Pending Contracts.



## Riley County Closed Listings Analysis

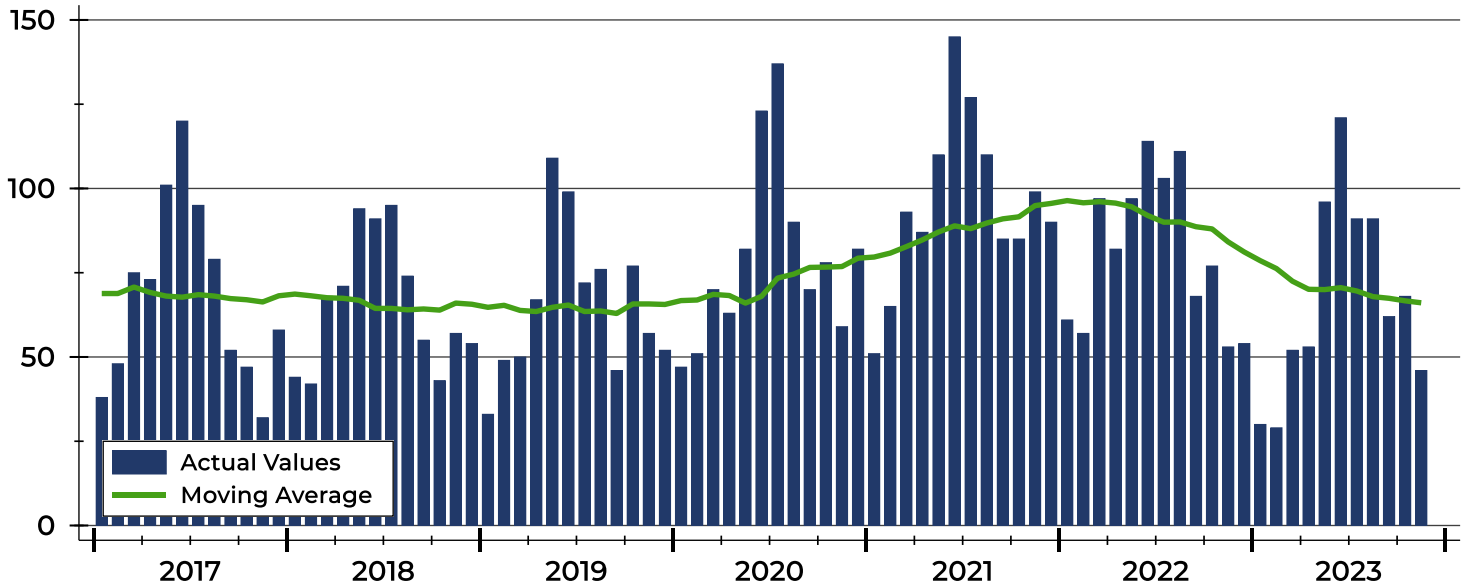
Summary Statistics for Closed Listings		November			Year-to-Date		
		2023	2022	Change	2023	2022	Change
Closed Listings		<b>46</b>	53	-13.2%	<b>739</b>	920	-19.7%
Volume (1,000s)		<b>11,300</b>	12,483	-9.5%	<b>204,902</b>	227,838	-10.1%
Months' Supply		<b>2.2</b>	1.6	37.5%	<b>N/A</b>	N/A	N/A
Average	Sale Price	<b>245,660</b>	235,522	4.3%	<b>277,270</b>	247,650	12.0%
	Days on Market	<b>41</b>	35	17.1%	<b>32</b>	26	23.1%
	Percent of List	<b>97.8%</b>	97.3%	0.5%	<b>98.7%</b>	99.4%	-0.7%
	Percent of Original	<b>95.2%</b>	94.9%	0.3%	<b>97.5%</b>	98.4%	-0.9%
Median	Sale Price	<b>240,000</b>	225,000	6.7%	<b>245,000</b>	226,000	8.4%
	Days on Market	<b>24</b>	16	50.0%	<b>10</b>	7	42.9%
	Percent of List	<b>98.3%</b>	98.5%	-0.2%	<b>100.0%</b>	100.0%	0.0%
	Percent of Original	<b>97.2%</b>	96.7%	0.5%	<b>99.5%</b>	100.0%	-0.5%

A total of 46 homes sold in Riley County in November, down from 53 units in November 2022. Total sales volume fell to \$11.3 million compared to \$12.5 million in the previous year.

The median sales price in November was \$240,000, up 6.7% compared to the prior year. Median days on market was 24 days, up from 21 days in October, and up from 16 in November 2022.

## History of Closed Listings

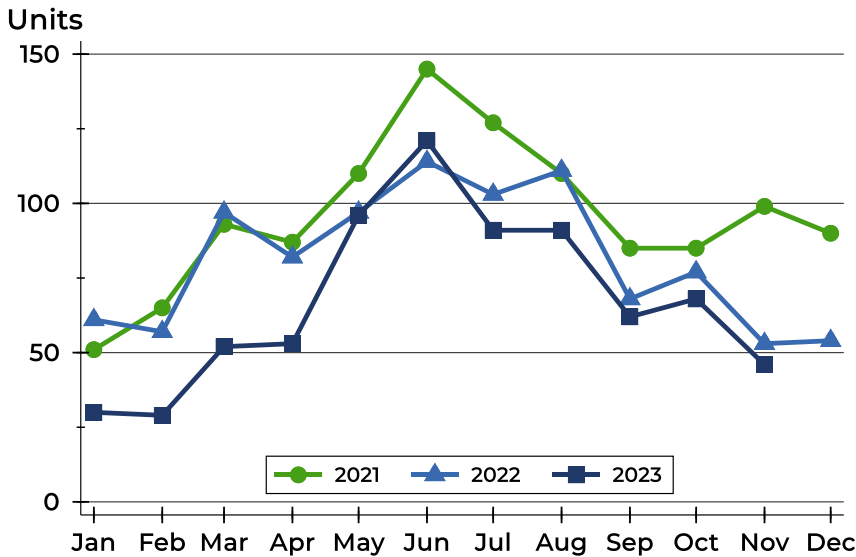
Units





## Riley County Closed Listings Analysis

### Closed Listings by Month



Month	2021	2022	2023
January	51	61	30
February	65	57	29
March	93	97	52
April	87	82	53
May	110	97	96
June	145	114	121
July	127	103	91
August	110	111	91
September	85	68	62
October	85	77	68
November	99	53	46
December	90	54	

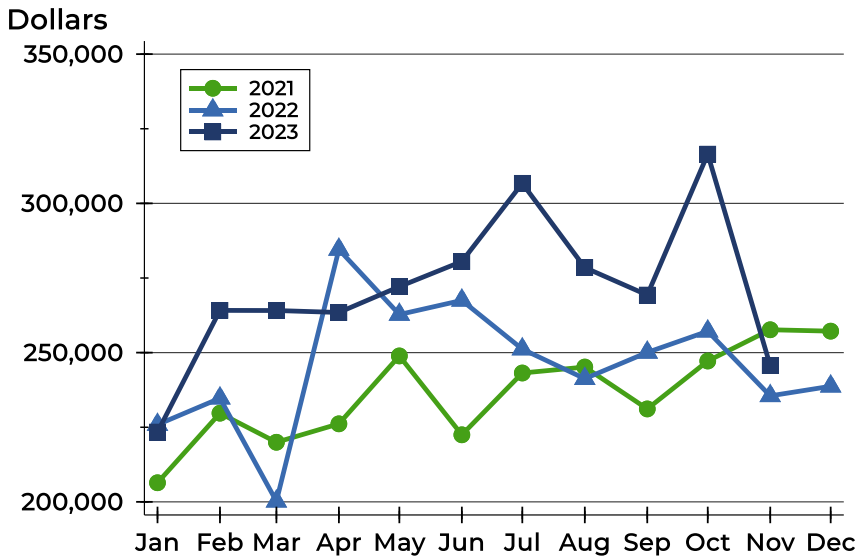
### Closed Listings by Price Range

Price Range	Sales		Months' Supply	Sale Price		Days on Market		Price as % of List		Price as % of Orig.	
	Number	Percent		Average	Median	Avg.	Med.	Avg.	Med.	Avg.	Med.
Below \$25,000	0	0.0%	N/A	N/A	N/A	N/A	N/A	N/A	N/A	N/A	N/A
\$25,000-\$49,999	1	2.2%	4.8	45,000	45,000	79	79	77.6%	77.6%	77.6%	77.6%
\$50,000-\$99,999	0	0.0%	N/A	N/A	N/A	N/A	N/A	N/A	N/A	N/A	N/A
\$100,000-\$124,999	3	6.5%	3.5	114,917	113,000	31	43	98.3%	97.2%	96.2%	96.0%
\$125,000-\$149,999	7	15.2%	3.0	137,186	133,900	55	40	96.6%	96.3%	90.1%	89.3%
\$150,000-\$174,999	1	2.2%	1.5	165,000	165,000	6	6	100.0%	100.0%	100.0%	100.0%
\$175,000-\$199,999	4	8.7%	2.2	185,725	185,500	9	6	99.5%	98.9%	99.5%	98.9%
\$200,000-\$249,999	9	19.6%	1.3	223,833	225,000	25	13	97.1%	97.9%	95.4%	97.9%
\$250,000-\$299,999	9	19.6%	2.7	273,989	275,000	60	16	99.9%	100.0%	97.2%	100.0%
\$300,000-\$399,999	9	19.6%	1.8	343,944	340,000	52	47	98.3%	98.4%	95.1%	96.2%
\$400,000-\$499,999	2	4.3%	1.5	423,250	423,250	15	15	98.5%	98.5%	98.5%	98.5%
\$500,000-\$749,999	1	2.2%	2.5	620,000	620,000	52	52	97.6%	97.6%	97.6%	97.6%
\$750,000-\$999,999	0	0.0%	N/A	N/A	N/A	N/A	N/A	N/A	N/A	N/A	N/A
\$1,000,000 and up	0	0.0%	N/A	N/A	N/A	N/A	N/A	N/A	N/A	N/A	N/A



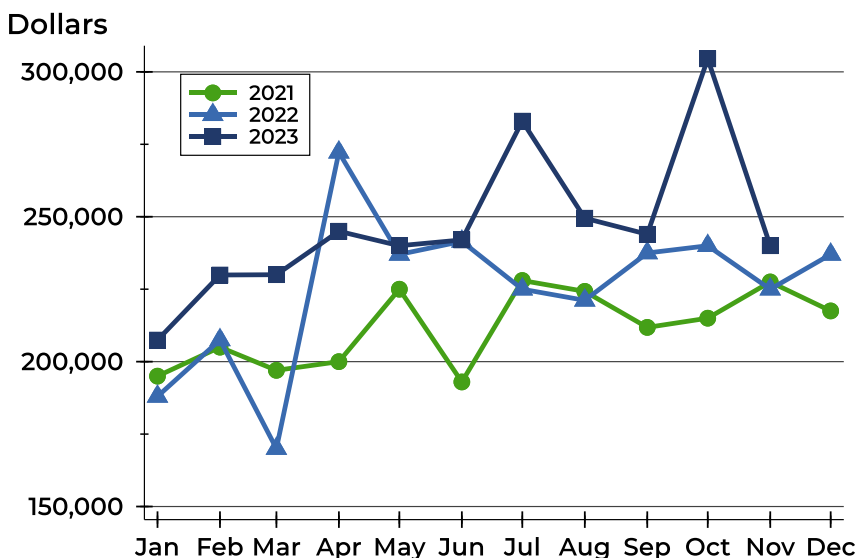
## Riley County Closed Listings Analysis

### Average Price



Month	2021	2022	2023
<b>January</b>	206,402	225,875	<b>223,398</b>
<b>February</b>	229,715	234,723	<b>264,153</b>
<b>March</b>	219,973	200,196	<b>264,104</b>
<b>April</b>	226,152	284,561	<b>263,458</b>
<b>May</b>	248,898	262,771	<b>272,119</b>
<b>June</b>	222,470	267,511	<b>280,542</b>
<b>July</b>	243,175	251,180	<b>306,725</b>
<b>August</b>	245,172	241,275	<b>278,493</b>
<b>September</b>	231,140	250,074	<b>269,304</b>
<b>October</b>	247,194	257,164	<b>316,505</b>
<b>November</b>	257,661	235,522	<b>245,660</b>
<b>December</b>	257,195	238,726	

### Median Price

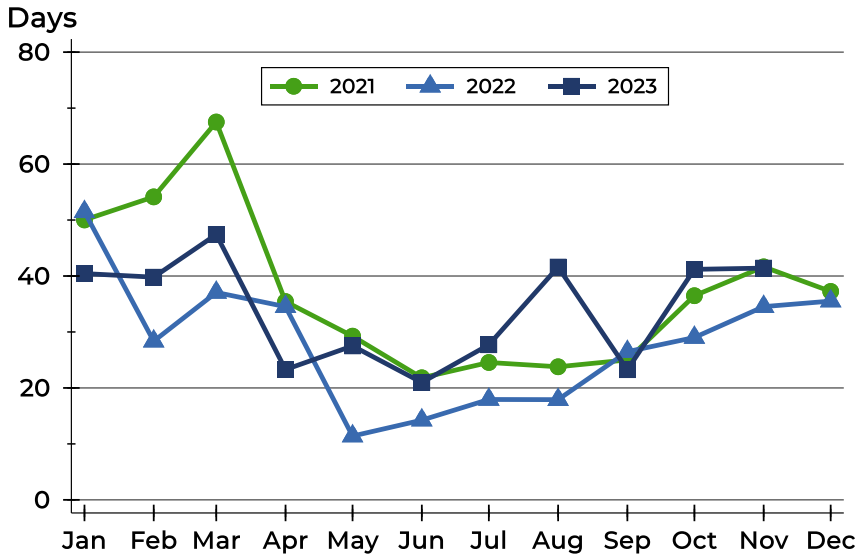


Month	2021	2022	2023
<b>January</b>	195,000	188,000	<b>207,450</b>
<b>February</b>	205,000	207,500	<b>229,900</b>
<b>March</b>	197,000	170,000	<b>230,000</b>
<b>April</b>	200,000	272,250	<b>245,000</b>
<b>May</b>	225,000	237,000	<b>240,000</b>
<b>June</b>	193,000	241,500	<b>242,000</b>
<b>July</b>	228,000	225,000	<b>283,000</b>
<b>August</b>	224,250	221,159	<b>249,500</b>
<b>September</b>	211,819	237,500	<b>243,950</b>
<b>October</b>	215,000	240,000	<b>304,500</b>
<b>November</b>	227,500	225,000	<b>240,000</b>
<b>December</b>	217,500	237,000	



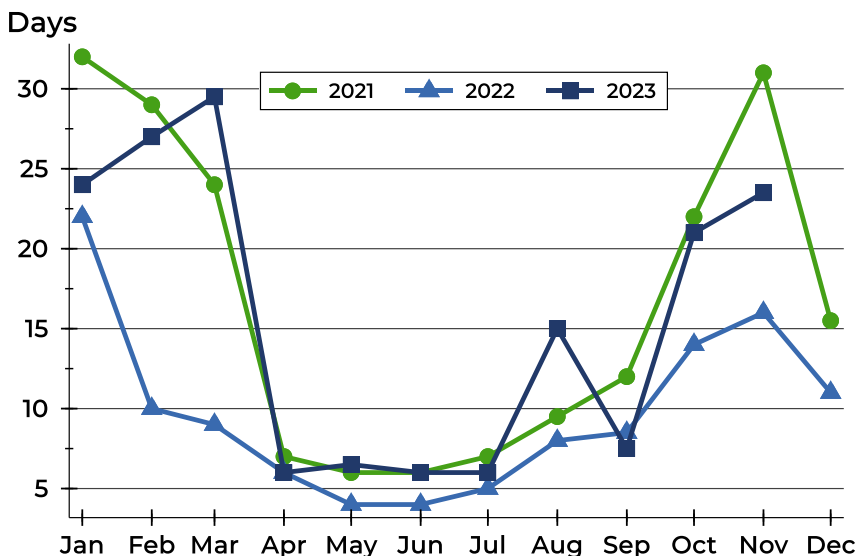
## Riley County Closed Listings Analysis

### Average DOM



Month	2021	2022	2023
January	50	51	40
February	54	28	40
March	68	37	47
April	35	35	23
May	29	11	28
June	22	14	21
July	25	18	28
August	24	18	42
September	25	26	23
October	36	29	41
November	42	35	41
December	37	36	

### Median DOM



Month	2021	2022	2023
January	32	22	24
February	29	10	27
March	24	9	30
April	7	6	6
May	6	4	7
June	6	4	6
July	7	5	6
August	10	8	15
September	12	9	8
October	22	14	21
November	31	16	24
December	16	11	



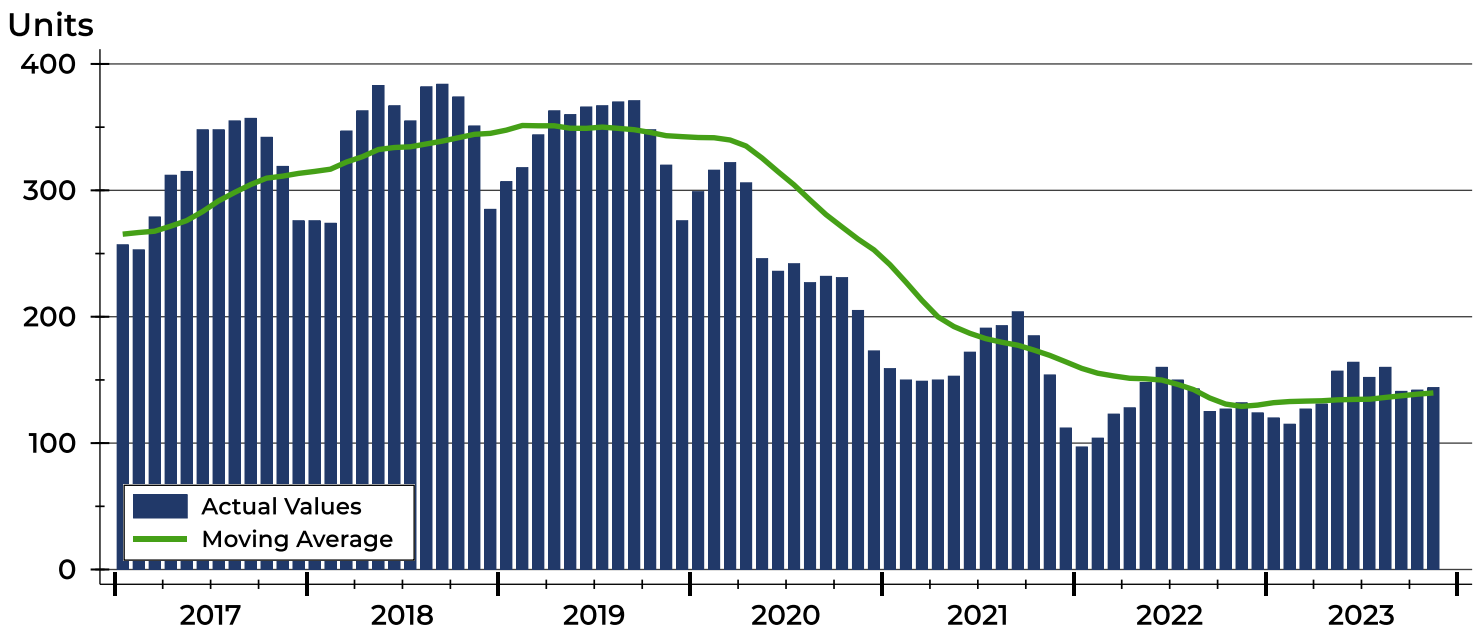
## Riley County Active Listings Analysis

Summary Statistics for Active Listings		2023	2022	Change
Active Listings		<b>144</b>	132	9.1%
Volume (1,000s)		<b>42,129</b>	40,077	5.1%
Months' Supply		<b>2.2</b>	1.6	37.5%
Average	List Price	<b>292,564</b>	303,615	-3.6%
	Days on Market	<b>76</b>	76	0.0%
	Percent of Original	<b>97.3%</b>	97.8%	-0.5%
Median	List Price	<b>248,000</b>	249,000	-0.4%
	Days on Market	<b>57</b>	55	3.6%
	Percent of Original	<b>100.0%</b>	100.0%	0.0%

A total of 144 homes were available for sale in Riley County at the end of November. This represents a 2.2 months' supply of active listings.

The median list price of homes on the market at the end of November was \$248,000, down 0.4% from 2022. The typical time on market for active listings was 57 days, up from 55 days a year earlier.

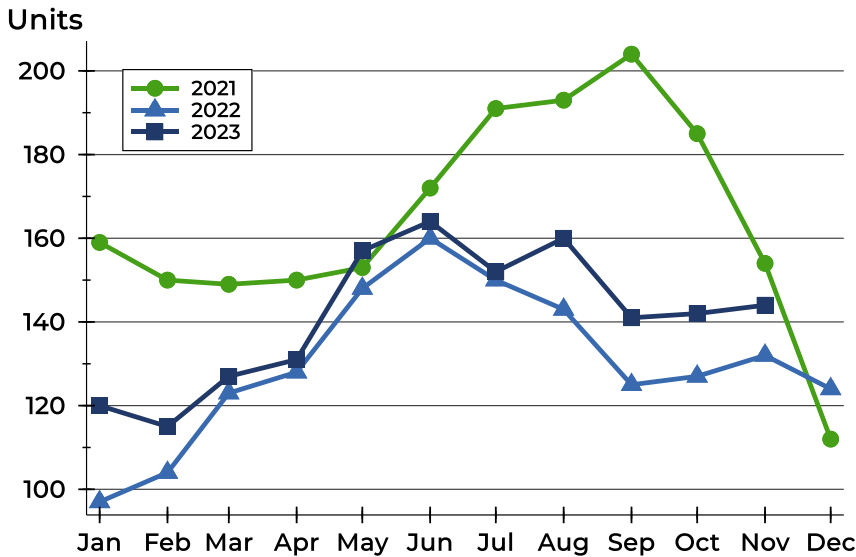
## History of Active Listings





## Riley County Active Listings Analysis

### Active Listings by Month



Month	2021	2022	2023
<b>January</b>	159	97	<b>120</b>
<b>February</b>	150	104	<b>115</b>
<b>March</b>	149	123	<b>127</b>
<b>April</b>	150	128	<b>131</b>
<b>May</b>	153	148	<b>157</b>
<b>June</b>	172	160	<b>164</b>
<b>July</b>	191	150	<b>152</b>
<b>August</b>	193	143	<b>160</b>
<b>September</b>	204	125	<b>141</b>
<b>October</b>	185	127	<b>142</b>
<b>November</b>	154	132	<b>144</b>
<b>December</b>	112	124	

### Active Listings by Price Range

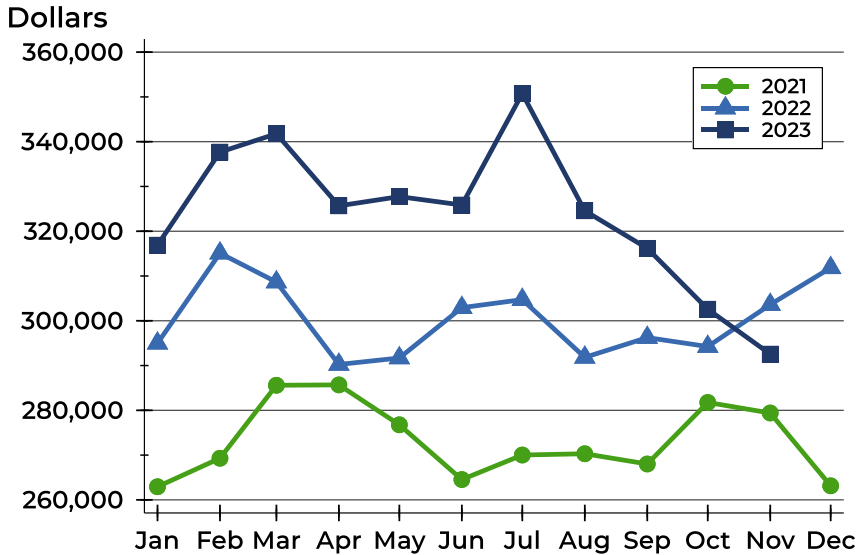
Price Range	Active Listings Number	Active Listings Percent	Months' Supply	List Price Average	List Price Median	Days on Market Avg.	Days on Market Med.	Price as % of Orig. Avg.	Price as % of Orig. Med.
Below \$25,000	0	0.0%	N/A	N/A	N/A	N/A	N/A	N/A	N/A
\$25,000-\$49,999	2	1.4%	4.8	49,900	49,900	65	65	78.0%	78.0%
\$50,000-\$99,999	9	6.3%	N/A	82,178	79,900	87	84	94.3%	95.1%
\$100,000-\$124,999	11	7.6%	3.5	113,891	115,000	73	56	95.9%	100.0%
\$125,000-\$149,999	10	6.9%	3.0	136,850	137,250	64	64	96.7%	100.0%
\$150,000-\$174,999	9	6.3%	1.5	164,878	168,000	43	32	99.2%	100.0%
\$175,000-\$199,999	15	10.4%	2.2	188,527	189,000	40	27	99.3%	100.0%
\$200,000-\$249,999	18	12.5%	1.3	226,489	227,450	67	45	98.2%	100.0%
\$250,000-\$299,999	24	16.7%	2.7	281,517	282,700	63	44	97.4%	100.0%
\$300,000-\$399,999	25	17.4%	1.8	360,796	364,000	79	56	97.1%	98.4%
\$400,000-\$499,999	7	4.9%	1.5	451,700	440,000	99	113	98.9%	100.0%
\$500,000-\$749,999	8	5.6%	2.5	588,595	587,140	103	124	100.6%	100.0%
\$750,000-\$999,999	4	2.8%	N/A	889,500	925,000	229	96	93.3%	96.7%
\$1,000,000 and up	2	1.4%	N/A	1,537,500	1,537,500	233	233	100.0%	100.0%





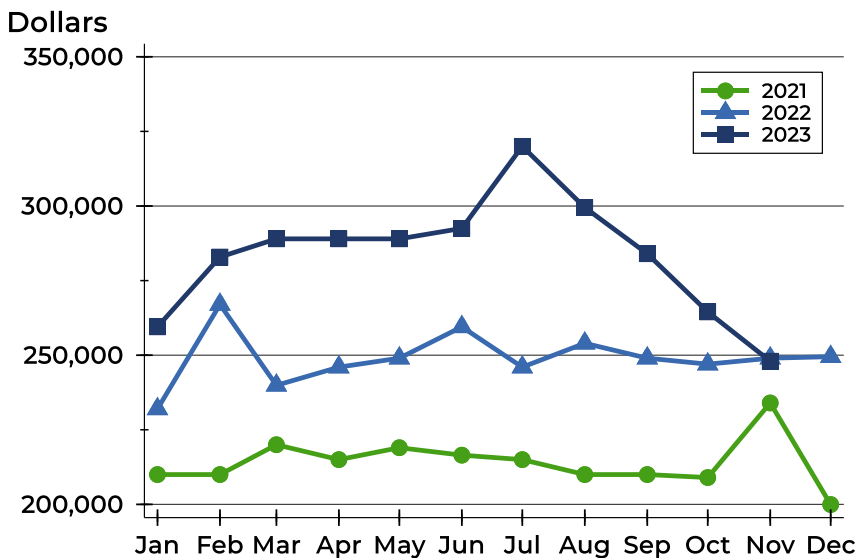
## Riley County Active Listings Analysis

### Average Price



Month	2021	2022	2023
<b>January</b>	262,929	294,980	<b>316,889</b>
<b>February</b>	269,299	315,098	<b>337,680</b>
<b>March</b>	285,597	308,649	<b>341,768</b>
<b>April</b>	285,687	290,244	<b>325,675</b>
<b>May</b>	276,770	291,693	<b>327,740</b>
<b>June</b>	264,539	302,934	<b>325,855</b>
<b>July</b>	270,021	304,729	<b>350,757</b>
<b>August</b>	270,304	291,827	<b>324,571</b>
<b>September</b>	268,017	296,245	<b>316,188</b>
<b>October</b>	281,756	294,245	<b>302,591</b>
<b>November</b>	279,402	303,615	<b>292,564</b>
<b>December</b>	263,144	311,834	

### Median Price

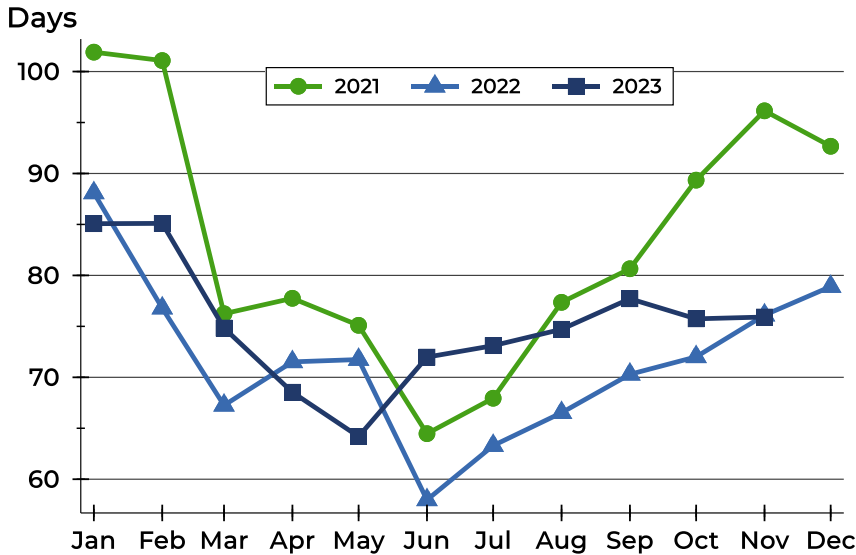


Month	2021	2022	2023
<b>January</b>	210,000	232,000	<b>259,500</b>
<b>February</b>	210,000	267,000	<b>282,900</b>
<b>March</b>	220,000	239,900	<b>289,000</b>
<b>April</b>	215,000	246,000	<b>289,000</b>
<b>May</b>	219,000	249,000	<b>289,000</b>
<b>June</b>	216,500	259,500	<b>292,500</b>
<b>July</b>	215,000	246,000	<b>320,000</b>
<b>August</b>	210,000	254,000	<b>299,500</b>
<b>September</b>	210,000	249,000	<b>284,000</b>
<b>October</b>	209,000	247,000	<b>264,500</b>
<b>November</b>	234,000	249,000	<b>248,000</b>
<b>December</b>	199,950	249,500	



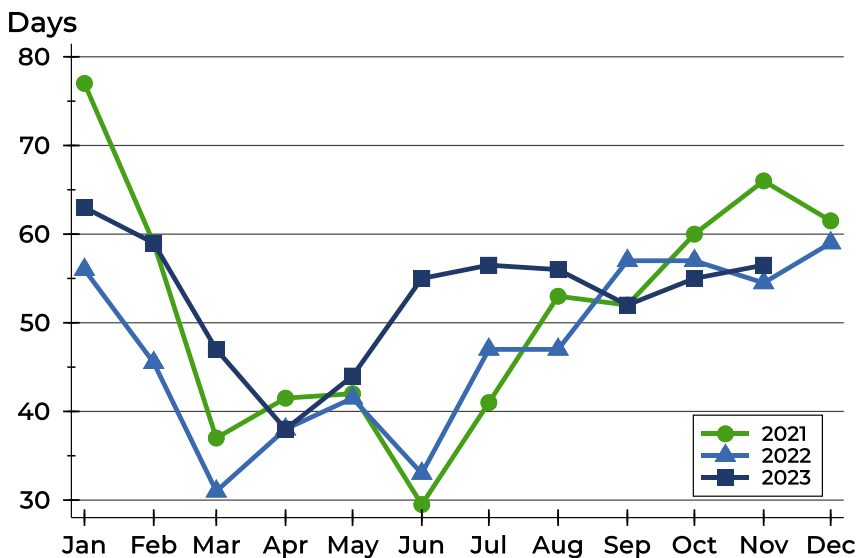
## Riley County Active Listings Analysis

### Average DOM



Month	2021	2022	2023
January	102	88	<b>85</b>
February	101	77	<b>85</b>
March	76	67	<b>75</b>
April	78	72	<b>69</b>
May	75	72	<b>64</b>
June	64	58	<b>72</b>
July	68	63	<b>73</b>
August	77	67	<b>75</b>
September	81	70	<b>78</b>
October	89	72	<b>76</b>
November	96	76	<b>76</b>
December	93	79	

### Median DOM

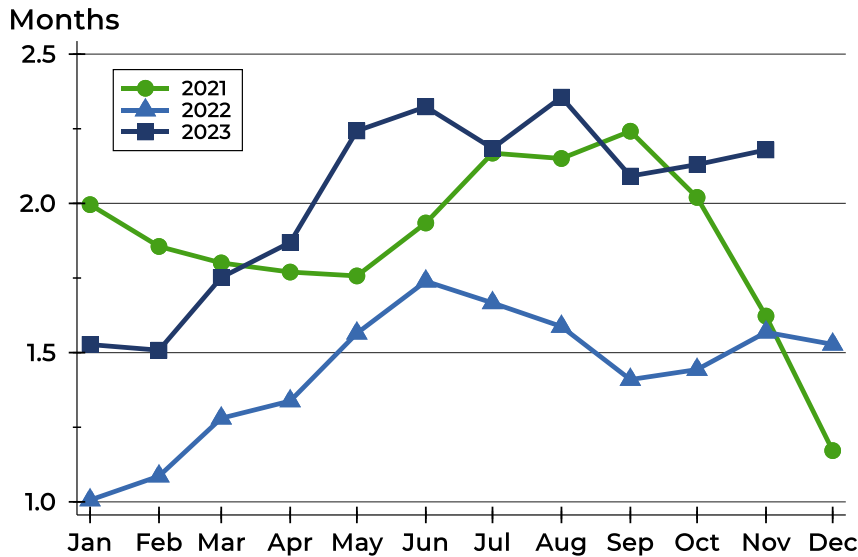


Month	2021	2022	2023
January	77	56	<b>63</b>
February	59	46	<b>59</b>
March	37	31	<b>47</b>
April	42	38	<b>38</b>
May	42	42	<b>44</b>
June	30	33	<b>55</b>
July	41	47	<b>57</b>
August	53	47	<b>56</b>
September	52	57	<b>52</b>
October	60	57	<b>55</b>
November	66	55	<b>57</b>
December	62	59	



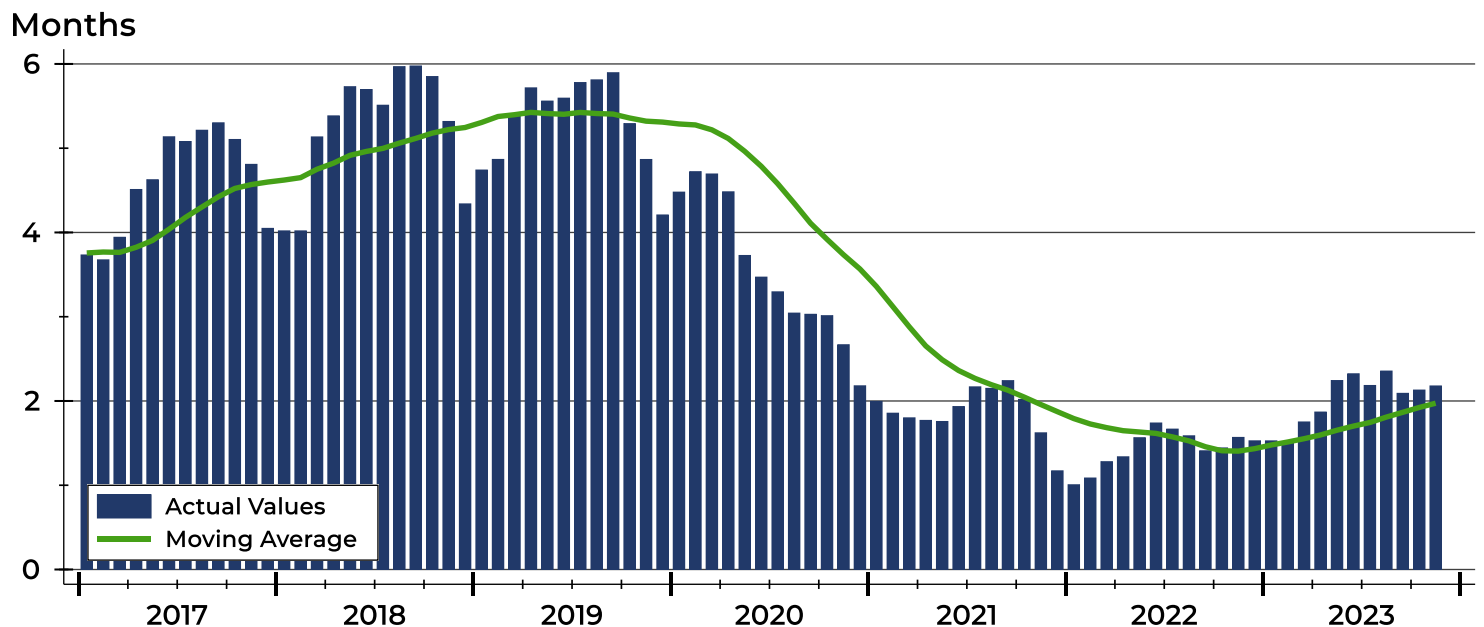
## Riley County Months' Supply Analysis

### Months' Supply by Month



Month	2021	2022	2023
January	2.0	1.0	1.5
February	1.9	1.1	1.5
March	1.8	1.3	1.8
April	1.8	1.3	1.9
May	1.8	1.6	2.2
June	1.9	1.7	2.3
July	2.2	1.7	2.2
August	2.2	1.6	2.4
September	2.2	1.4	2.1
October	2.0	1.4	2.1
November	1.6	1.6	2.2
December	1.2	1.5	-

### History of Month's Supply





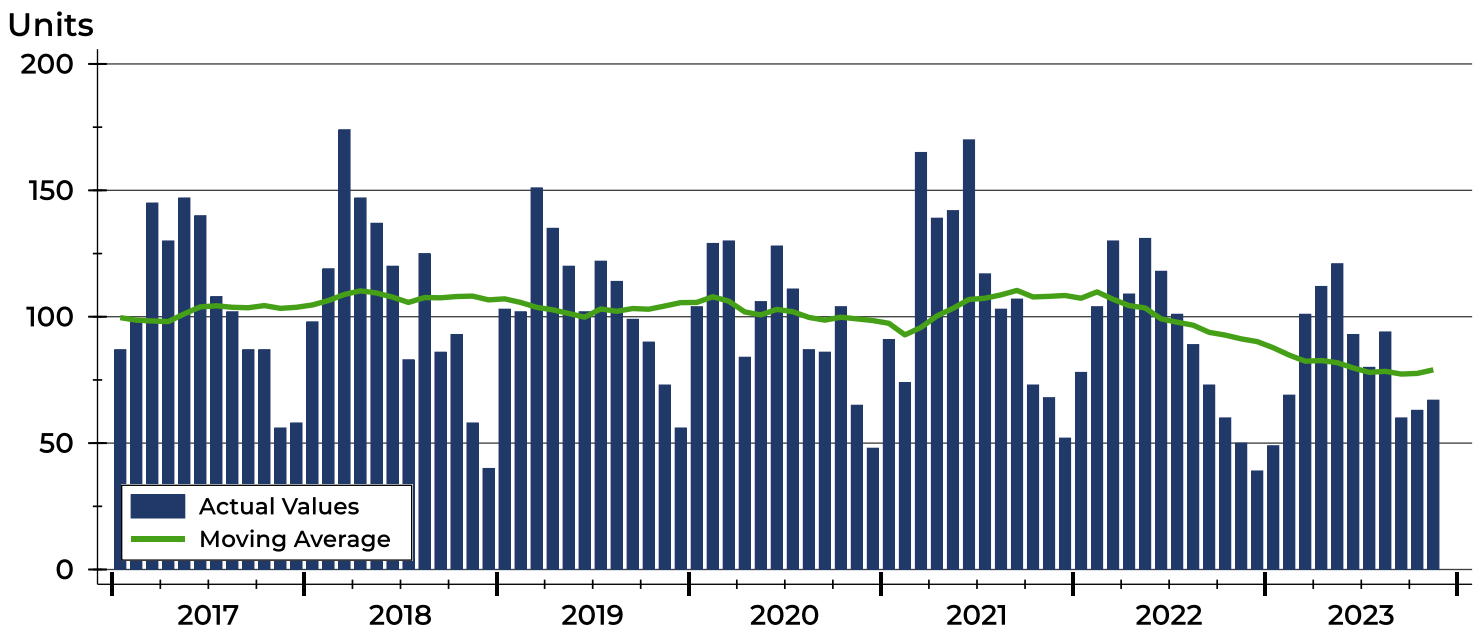
## Riley County New Listings Analysis

Summary Statistics for New Listings		2023	November 2022	Change
Current Month	New Listings	<b>67</b>	50	34.0%
	Volume (1,000s)	<b>18,123</b>	11,912	52.1%
	Average List Price	<b>270,498</b>	238,235	13.5%
	Median List Price	<b>229,900</b>	210,000	9.5%
Year-to-Date	New Listings	<b>909</b>	1,043	-12.8%
	Volume (1,000s)	<b>258,766</b>	270,069	-4.2%
	Average List Price	<b>284,671</b>	258,935	9.9%
	Median List Price	<b>250,000</b>	230,000	8.7%

A total of 67 new listings were added in Riley County during November, up 34.0% from the same month in 2022. Year-to-date Riley County has seen 909 new listings.

The median list price of these homes was \$229,900 up from \$210,000 in 2022.

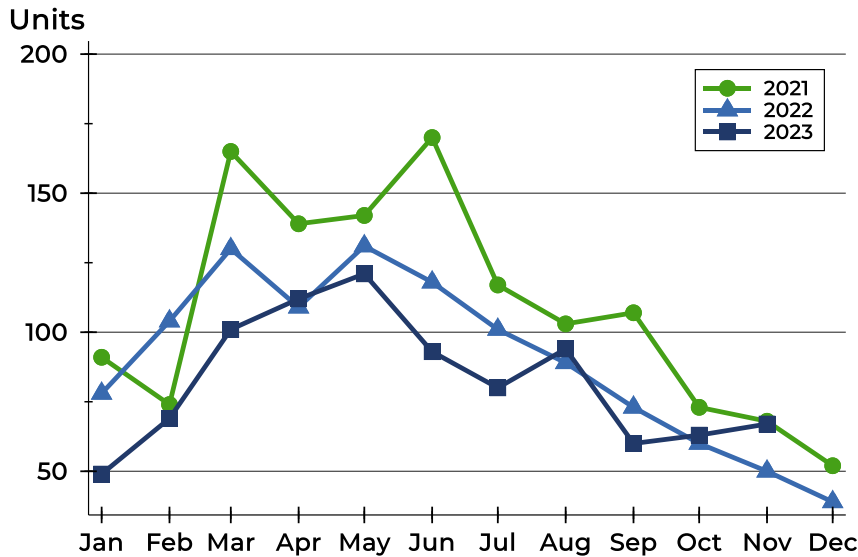
## History of New Listings





## Riley County New Listings Analysis

### New Listings by Month



Month	2021	2022	2023
January	91	78	49
February	74	104	69
March	165	130	101
April	139	109	112
May	142	131	121
June	170	118	93
July	117	101	80
August	103	89	94
September	107	73	60
October	73	60	63
November	68	50	67
December	52	39	

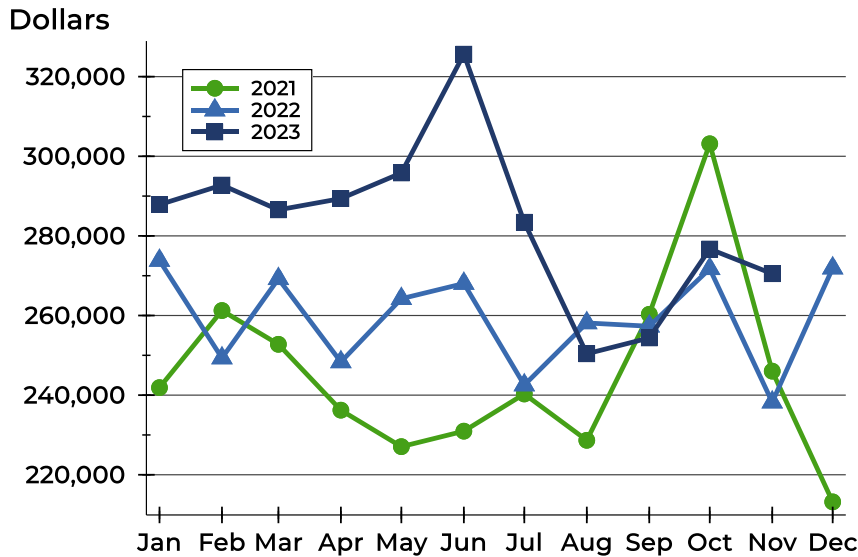
### New Listings by Price Range

Price Range	New Listings		List Price		Days on Market		Price as % of Orig.	
	Number	Percent	Average	Median	Avg.	Med.	Avg.	Med.
Below \$25,000	0	0.0%	N/A	N/A	N/A	N/A	N/A	N/A
\$25,000-\$49,999	0	0.0%	N/A	N/A	N/A	N/A	N/A	N/A
\$50,000-\$99,999	0	0.0%	N/A	N/A	N/A	N/A	N/A	N/A
\$100,000-\$124,999	2	3.0%	112,000	112,000	20	20	100.0%	100.0%
\$125,000-\$149,999	2	3.0%	140,000	140,000	18	18	100.0%	100.0%
\$150,000-\$174,999	6	9.0%	163,000	166,500	15	9	100.0%	100.0%
\$175,000-\$199,999	14	20.9%	187,029	188,500	17	15	99.7%	100.0%
\$200,000-\$249,999	14	20.9%	222,371	220,000	15	10	98.4%	100.0%
\$250,000-\$299,999	13	19.4%	284,223	285,000	17	22	99.2%	100.0%
\$300,000-\$399,999	9	13.4%	357,878	365,000	17	11	99.6%	100.0%
\$400,000-\$499,999	3	4.5%	438,333	440,000	17	19	100.0%	100.0%
\$500,000-\$749,999	3	4.5%	643,000	650,000	13	5	100.0%	100.0%
\$750,000-\$999,999	1	1.5%	750,000	750,000	36	36	100.0%	100.0%
\$1,000,000 and up	0	0.0%	N/A	N/A	N/A	N/A	N/A	N/A



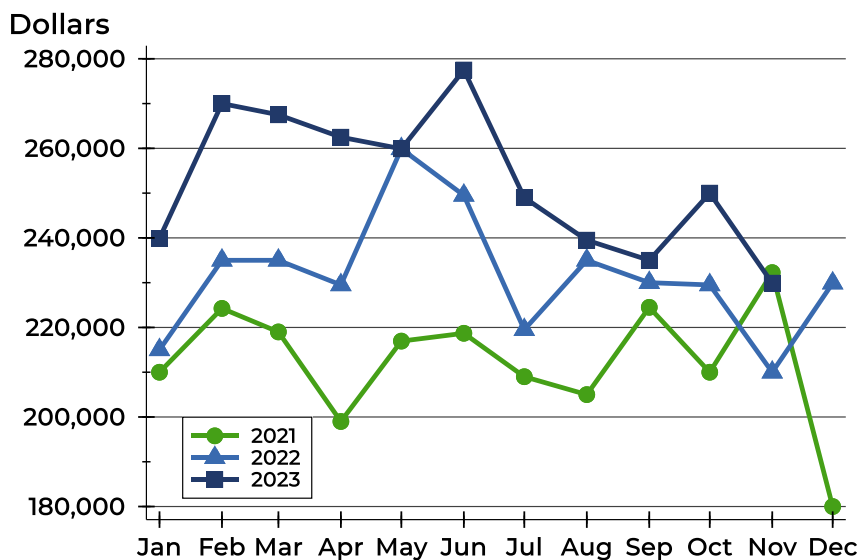
## Riley County New Listings Analysis

### Average Price



Month	2021	2022	2023
January	241,888	273,821	<b>287,852</b>
February	261,254	249,317	<b>292,767</b>
March	252,772	269,234	<b>286,544</b>
April	236,225	248,339	<b>289,376</b>
May	227,067	264,226	<b>295,812</b>
June	230,952	268,046	<b>325,656</b>
July	240,298	242,536	<b>283,440</b>
August	228,658	258,135	<b>250,388</b>
September	260,308	257,311	<b>254,370</b>
October	303,145	271,739	<b>276,708</b>
November	246,026	238,235	<b>270,498</b>
December	213,190	271,909	

### Median Price



Month	2021	2022	2023
January	210,000	215,000	<b>239,900</b>
February	224,250	235,000	<b>270,000</b>
March	219,000	235,000	<b>267,500</b>
April	199,000	229,500	<b>262,500</b>
May	216,950	259,900	<b>259,900</b>
June	218,700	249,500	<b>277,500</b>
July	209,000	219,500	<b>249,000</b>
August	205,000	235,000	<b>239,500</b>
September	224,500	230,000	<b>235,000</b>
October	209,999	229,500	<b>250,000</b>
November	232,250	210,000	<b>229,900</b>
December	180,000	229,900	



## Riley County Contracts Written Analysis

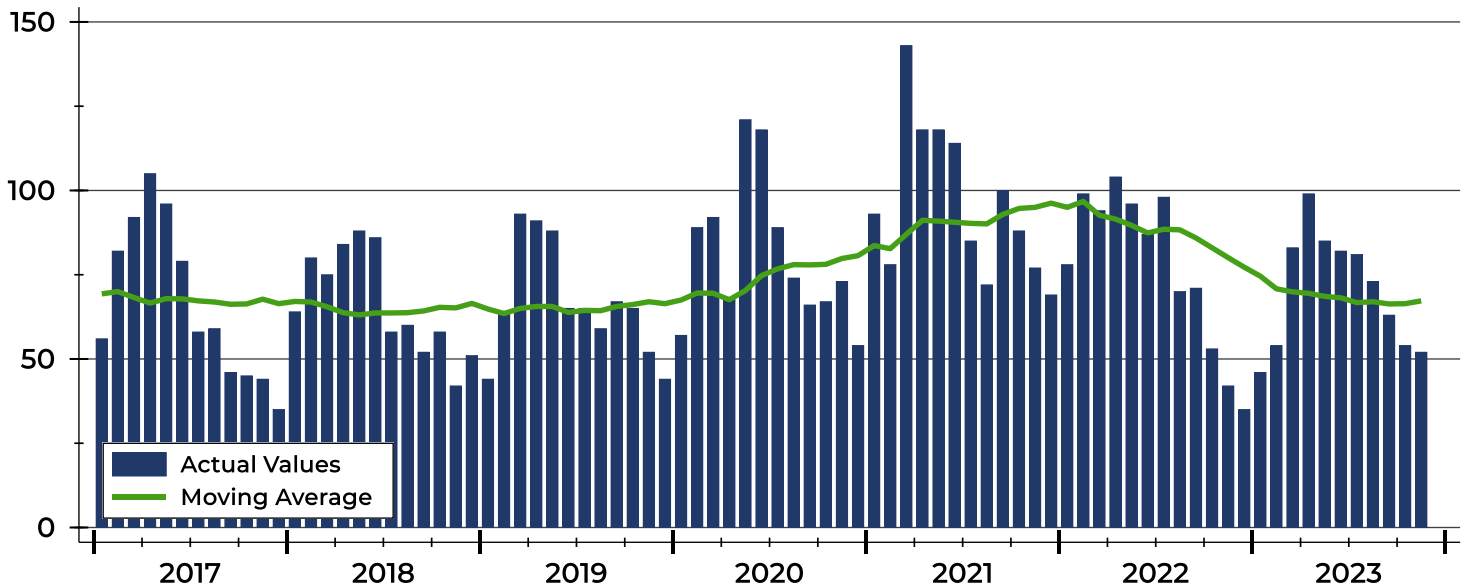
Summary Statistics for Contracts Written		November			Year-to-Date		
		2023	2022	Change	2023	2022	Change
Contracts Written		<b>52</b>	42	23.8%	<b>772</b>	892	-13.5%
Volume (1,000s)		<b>14,977</b>	10,230	46.4%	<b>219,003</b>	222,050	-1.4%
Average	Sale Price	<b>288,014</b>	243,560	18.3%	<b>283,683</b>	248,935	14.0%
	Days on Market	<b>45</b>	36	25.0%	<b>32</b>	24	33.3%
	Percent of Original	<b>97.8%</b>	95.3%	2.6%	<b>97.6%</b>	98.5%	-0.9%
Median	Sale Price	<b>244,225</b>	232,500	5.0%	<b>249,000</b>	228,500	9.0%
	Days on Market	<b>20</b>	16	25.0%	<b>10</b>	7	42.9%
	Percent of Original	<b>100.0%</b>	96.9%	3.2%	<b>100.0%</b>	100.0%	0.0%

A total of 52 contracts for sale were written in Riley County during the month of November, up from 42 in 2022. The median list price of these homes was \$244,225, up from \$232,500 the prior year.

Half of the homes that went under contract in November were on the market less than 20 days, compared to 16 days in November 2022.

## History of Contracts Written

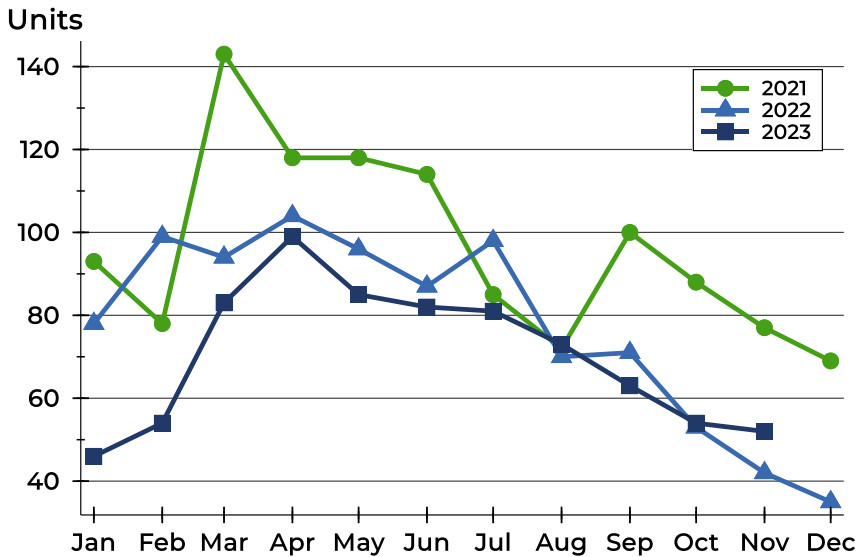
Units





## Riley County Contracts Written Analysis

### Contracts Written by Month



Month	2021	2022	2023
January	93	78	46
February	78	99	54
March	143	94	83
April	118	104	99
May	118	96	85
June	114	87	82
July	85	98	81
August	72	70	73
September	100	71	63
October	88	53	54
November	77	42	52
December	69	35	

### Contracts Written by Price Range

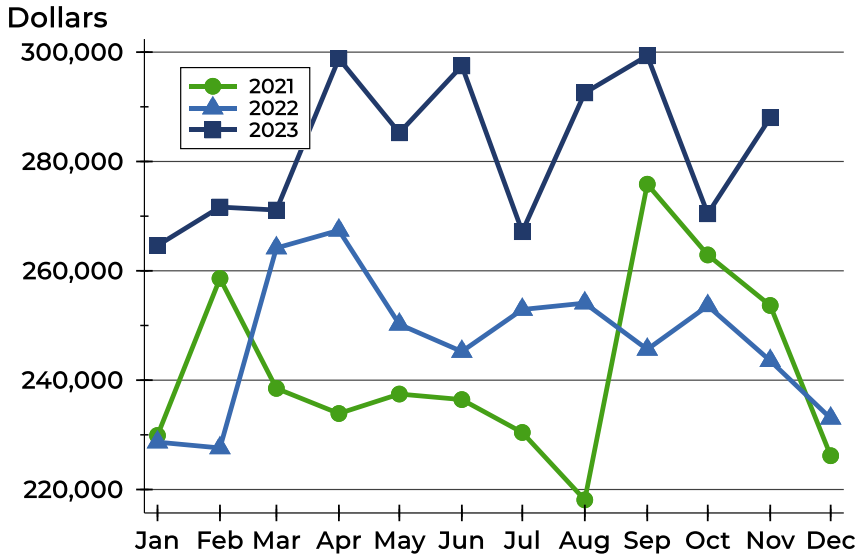
Price Range	Contracts Written		List Price		Days on Market		Price as % of Orig.	
	Number	Percent	Average	Median	Avg.	Med.	Avg.	Med.
Below \$25,000	0	0.0%	N/A	N/A	N/A	N/A	N/A	N/A
\$25,000-\$49,999	0	0.0%	N/A	N/A	N/A	N/A	N/A	N/A
\$50,000-\$99,999	1	1.9%	99,900	99,900	37	37	90.8%	90.8%
\$100,000-\$124,999	0	0.0%	N/A	N/A	N/A	N/A	N/A	N/A
\$125,000-\$149,999	1	1.9%	135,000	135,000	118	118	84.3%	84.3%
\$150,000-\$174,999	6	11.5%	162,750	162,250	44	30	94.6%	98.6%
\$175,000-\$199,999	7	13.5%	185,786	185,000	14	8	100.0%	100.0%
\$200,000-\$249,999	13	25.0%	226,912	220,000	27	10	99.0%	100.0%
\$250,000-\$299,999	6	11.5%	281,983	277,450	21	9	99.6%	100.0%
\$300,000-\$399,999	9	17.3%	348,422	349,900	44	31	97.2%	98.5%
\$400,000-\$499,999	4	7.7%	429,850	424,950	146	25	96.2%	97.5%
\$500,000-\$749,999	5	9.6%	593,576	529,999	76	60	99.5%	100.0%
\$750,000-\$999,999	0	0.0%	N/A	N/A	N/A	N/A	N/A	N/A
\$1,000,000 and up	0	0.0%	N/A	N/A	N/A	N/A	N/A	N/A





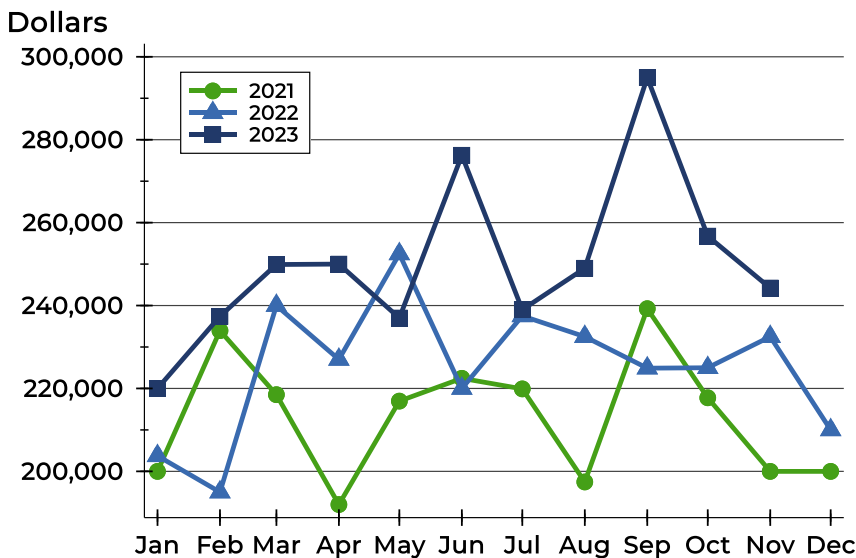
## Riley County Contracts Written Analysis

### Average Price



Month	2021	2022	2023
<b>January</b>	229,883	228,668	<b>264,630</b>
<b>February</b>	258,609	227,600	<b>271,664</b>
<b>March</b>	238,500	264,169	<b>271,114</b>
<b>April</b>	233,899	267,411	<b>298,818</b>
<b>May</b>	237,460	250,209	<b>285,244</b>
<b>June</b>	236,450	245,241	<b>297,489</b>
<b>July</b>	230,434	252,925	<b>267,157</b>
<b>August</b>	218,103	254,097	<b>292,554</b>
<b>September</b>	275,842	245,622	<b>299,340</b>
<b>October</b>	262,907	253,600	<b>270,441</b>
<b>November</b>	253,665	243,560	<b>288,014</b>
<b>December</b>	226,182	233,020	

### Median Price

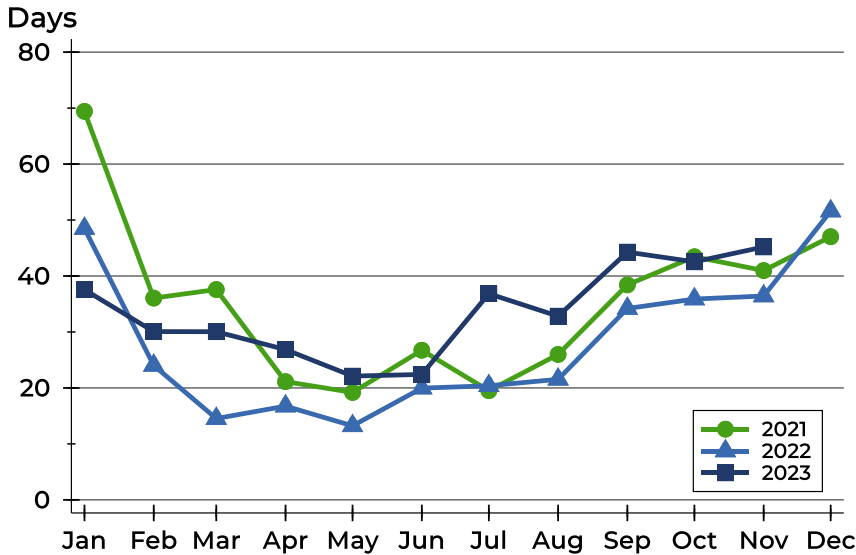


Month	2021	2022	2023
<b>January</b>	200,000	203,750	<b>220,000</b>
<b>February</b>	233,950	195,000	<b>237,400</b>
<b>March</b>	218,500	240,000	<b>249,900</b>
<b>April</b>	192,000	227,000	<b>250,000</b>
<b>May</b>	216,950	252,450	<b>237,000</b>
<b>June</b>	222,450	220,000	<b>276,250</b>
<b>July</b>	219,900	237,500	<b>239,000</b>
<b>August</b>	197,450	232,500	<b>249,000</b>
<b>September</b>	239,250	224,900	<b>295,000</b>
<b>October</b>	217,750	225,000	<b>256,750</b>
<b>November</b>	200,000	232,500	<b>244,225</b>
<b>December</b>	200,000	210,000	



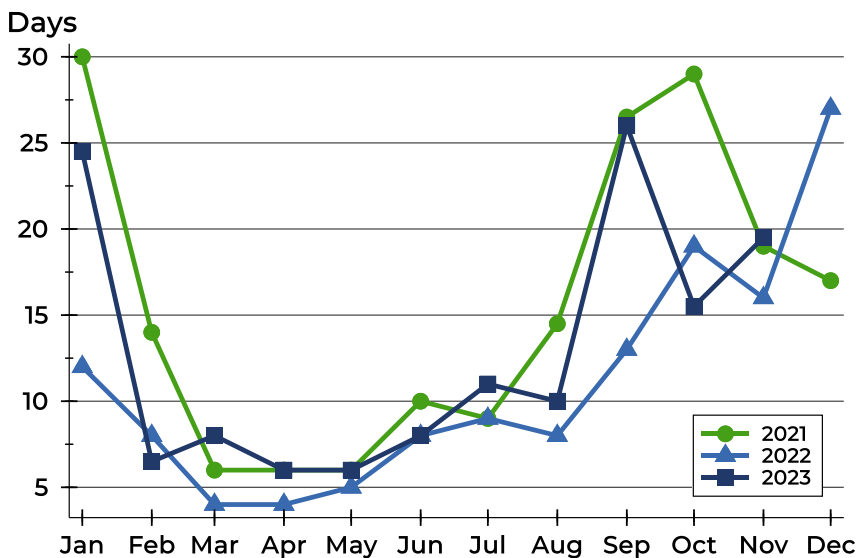
## Riley County Contracts Written Analysis

### Average DOM



Month	2021	2022	2023
January	69	48	<b>38</b>
February	36	24	<b>30</b>
March	38	15	<b>30</b>
April	21	17	<b>27</b>
May	19	13	<b>22</b>
June	27	20	<b>22</b>
July	20	20	<b>37</b>
August	26	22	<b>33</b>
September	38	34	<b>44</b>
October	43	36	<b>43</b>
November	41	36	<b>45</b>
December	47	52	

### Median DOM



Month	2021	2022	2023
January	30	12	<b>25</b>
February	14	8	<b>7</b>
March	6	4	<b>8</b>
April	6	4	<b>6</b>
May	6	5	<b>6</b>
June	10	8	<b>8</b>
July	9	9	<b>11</b>
August	15	8	<b>10</b>
September	27	13	<b>26</b>
October	29	19	<b>16</b>
November	19	16	<b>20</b>
December	17	27	



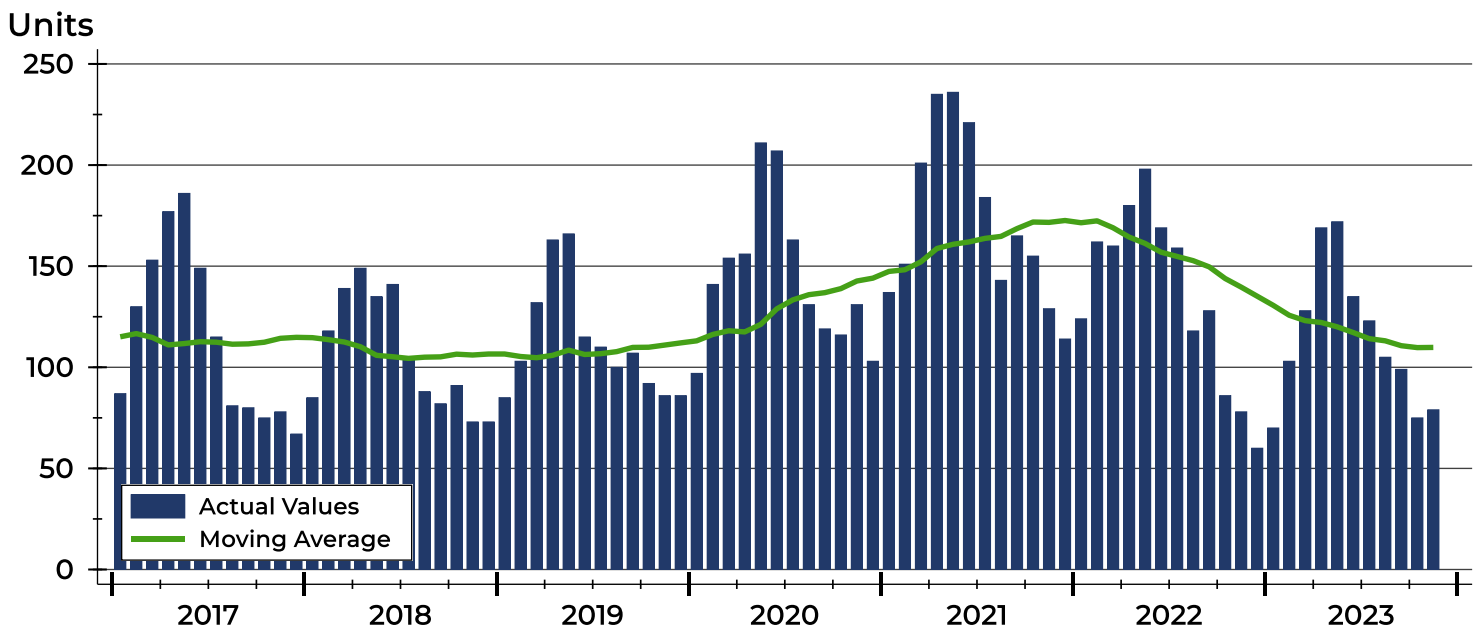
## Riley County Pending Contracts Analysis

Summary Statistics for Pending Contracts		End of November		
		2023	2022	Change
Pending Contracts		<b>79</b>	78	1.3%
Volume (1,000s)		<b>22,904</b>	18,998	20.6%
Average	List Price	<b>289,928</b>	243,560	19.0%
	Days on Market	<b>42</b>	32	31.3%
	Percent of Original	<b>98.0%</b>	98.1%	-0.1%
Median	List Price	<b>249,900</b>	225,000	11.1%
	Days on Market	<b>14</b>	15	-6.7%
	Percent of Original	<b>100.0%</b>	100.0%	0.0%

A total of 79 listings in Riley County had contracts pending at the end of November, up from 78 contracts pending at the end of November 2022.

Pending contracts reflect listings with a contract in place at the end of the month. In contrast, contracts written measures the number of listings put under contract during the month.

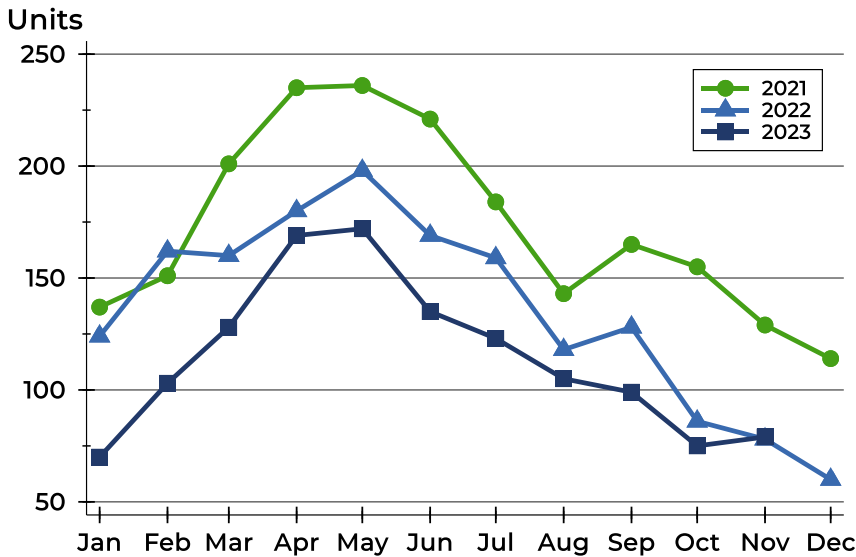
## History of Pending Contracts





## Riley County Pending Contracts Analysis

### Pending Contracts by Month



Month	2021	2022	2023
<b>January</b>	137	124	<b>70</b>
<b>February</b>	151	162	<b>103</b>
<b>March</b>	201	160	<b>128</b>
<b>April</b>	235	180	<b>169</b>
<b>May</b>	236	198	<b>172</b>
<b>June</b>	221	169	<b>135</b>
<b>July</b>	184	159	<b>123</b>
<b>August</b>	143	118	<b>105</b>
<b>September</b>	165	128	<b>99</b>
<b>October</b>	155	86	<b>75</b>
<b>November</b>	129	78	<b>79</b>
<b>December</b>	114	60	

### Pending Contracts by Price Range

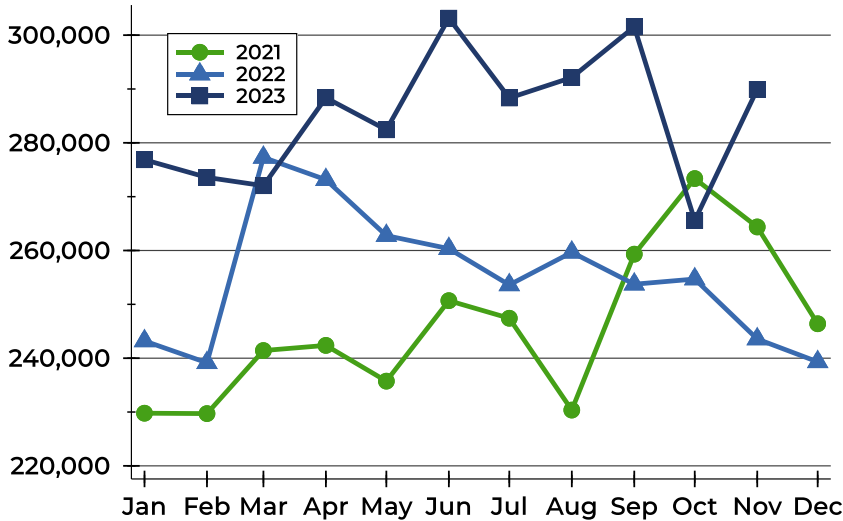
Price Range	Pending Contracts		List Price		Days on Market		Price as % of Orig.	
	Number	Percent	Average	Median	Avg.	Med.	Avg.	Med.
Below \$25,000	0	0.0%	N/A	N/A	N/A	N/A	N/A	N/A
\$25,000-\$49,999	0	0.0%	N/A	N/A	N/A	N/A	N/A	N/A
\$50,000-\$99,999	1	1.3%	99,900	99,900	37	37	90.8%	90.8%
\$100,000-\$124,999	0	0.0%	N/A	N/A	N/A	N/A	N/A	N/A
\$125,000-\$149,999	3	3.8%	133,900	130,000	29	14	95.6%	100.0%
\$150,000-\$174,999	8	10.1%	163,813	165,250	37	20	95.9%	100.0%
\$175,000-\$199,999	8	10.1%	182,875	182,500	12	8	100.0%	100.0%
\$200,000-\$249,999	20	25.3%	223,100	220,000	38	12	99.1%	100.0%
\$250,000-\$299,999	10	12.7%	281,240	284,950	15	7	98.9%	100.0%
\$300,000-\$399,999	15	19.0%	340,623	348,000	54	31	96.3%	98.5%
\$400,000-\$499,999	8	10.1%	445,475	445,000	102	25	97.6%	100.0%
\$500,000-\$749,999	6	7.6%	613,604	609,364	44	32	99.6%	100.0%
\$750,000-\$999,999	0	0.0%	N/A	N/A	N/A	N/A	N/A	N/A
\$1,000,000 and up	0	0.0%	N/A	N/A	N/A	N/A	N/A	N/A



## Riley County Pending Contracts Analysis

### Average Price

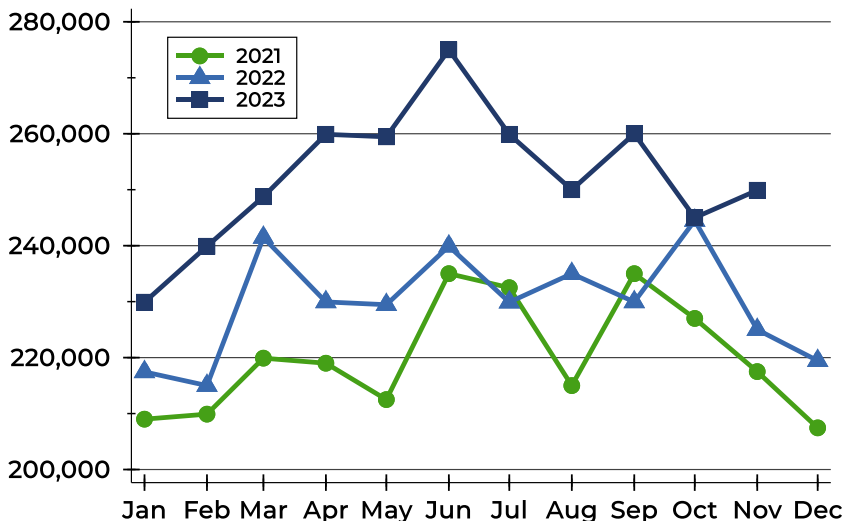
Dollars



Month	2021	2022	2023
<b>January</b>	229,781	243,204	<b>276,864</b>
<b>February</b>	229,712	239,149	<b>273,576</b>
<b>March</b>	241,420	277,287	<b>272,038</b>
<b>April</b>	242,377	273,152	<b>288,375</b>
<b>May</b>	235,738	262,768	<b>282,422</b>
<b>June</b>	250,688	260,348	<b>303,159</b>
<b>July</b>	247,424	253,615	<b>288,326</b>
<b>August</b>	230,364	259,667	<b>292,135</b>
<b>September</b>	259,319	253,740	<b>301,537</b>
<b>October</b>	273,363	254,702	<b>265,571</b>
<b>November</b>	264,377	243,560	<b>289,928</b>
<b>December</b>	246,398	239,327	

### Median Price

Dollars

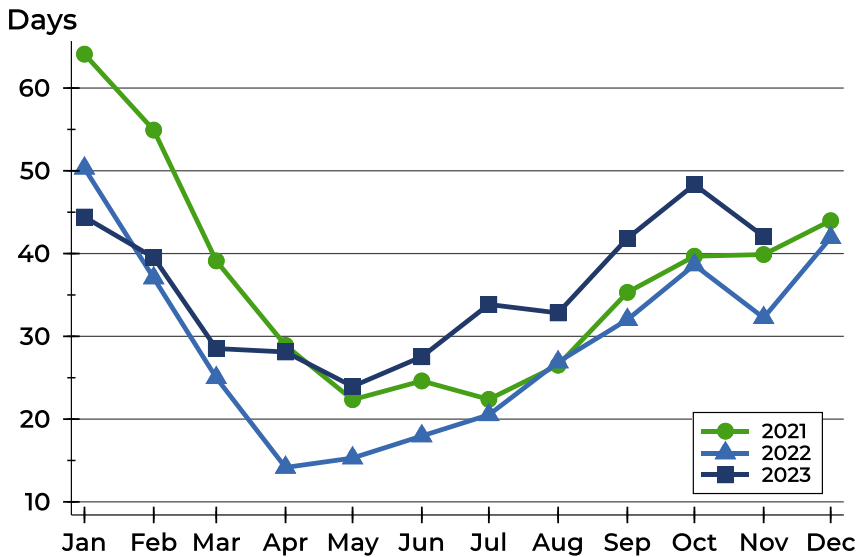


Month	2021	2022	2023
<b>January</b>	209,000	217,450	<b>229,900</b>
<b>February</b>	209,900	215,000	<b>239,900</b>
<b>March</b>	219,900	241,460	<b>248,750</b>
<b>April</b>	219,000	229,950	<b>259,900</b>
<b>May</b>	212,500	229,450	<b>259,450</b>
<b>June</b>	235,000	239,900	<b>275,000</b>
<b>July</b>	232,500	229,900	<b>259,900</b>
<b>August</b>	215,000	235,000	<b>250,000</b>
<b>September</b>	235,000	229,950	<b>260,000</b>
<b>October</b>	227,000	244,500	<b>245,000</b>
<b>November</b>	217,500	225,000	<b>249,900</b>
<b>December</b>	207,450	219,450	



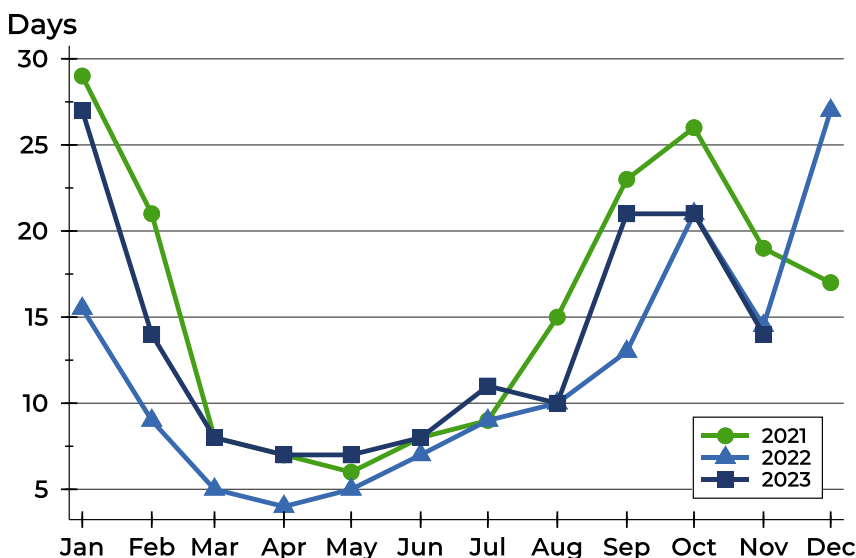
## Riley County Pending Contracts Analysis

### Average DOM



Month	2021	2022	2023
January	64	50	44
February	55	37	40
March	39	25	29
April	29	14	28
May	22	15	24
June	25	18	28
July	22	21	34
August	27	27	33
September	35	32	42
October	40	39	48
November	40	32	42
December	44	42	

### Median DOM



Month	2021	2022	2023
January	29	16	27
February	21	9	14
March	8	5	8
April	7	4	7
May	6	5	7
June	8	7	8
July	9	9	11
August	15	10	10
September	23	13	21
October	26	21	21
November	19	15	14
December	17	27	