



**December  
2023**

# Flint Hills MLS Statistics



**FLINT HILLS  
ASSOCIATION  
OF REALTORS®**

## Riley County Housing Report



### Market Overview

#### Riley County Home Sales Fell in December

Total home sales in Riley County fell last month to 49 units, compared to 54 units in December 2022. Total sales volume was \$13.5 million, up from a year earlier.

The median sale price in December was \$233,000, down from \$237,000 a year earlier. Homes that sold in December were typically on the market for 14 days and sold for 100.0% of their list prices.

#### Riley County Active Listings Up at End of December

The total number of active listings in Riley County at the end of December was 130 units, up from 124 at the same point in 2022. This represents a 2.0 months' supply of homes available for sale. The median list price of homes on the market at the end of December was \$275,000.

During December, a total of 48 contracts were written up from 35 in December 2022. At the end of the month, there were 81 contracts still pending.

### Report Contents

- Summary Statistics – Page 2
- Closed Listing Analysis – Page 3
- Active Listings Analysis – Page 7
- Months' Supply Analysis – Page 11
- New Listings Analysis – Page 12
- Contracts Written Analysis – Page 15
- Pending Contracts Analysis – Page 19

### Contact Information

Margaret Pendleton, Association Executive  
 Flint Hills Association of REALTORS®  
 205 S. Seth Child Road  
 Manhattan, KS 66502  
 785-776-1203  
[ae@flinthillsrealtors.net](mailto:ae@flinthillsrealtors.net)  
[www.flinthillsrealtors.net](http://www.flinthillsrealtors.net)



## Riley County Summary Statistics

December MLS Statistics Three-year History		Current Month			Year-to-Date		
		2023	2022	2021	2023	2022	2021
<b>Home Sales</b>		<b>49</b>	<b>54</b>	<b>90</b>	<b>788</b>	<b>974</b>	<b>1,147</b>
Change from prior year		-9.3%	-40.0%	9.8%	-19.1%	-15.1%	20.5%
<b>Active Listings</b>		<b>130</b>	<b>124</b>	<b>112</b>	<b>N/A</b>	<b>N/A</b>	<b>N/A</b>
Change from prior year		4.8%	10.7%	-35.3%			
<b>Months' Supply</b>		<b>2.0</b>	<b>1.5</b>	<b>1.2</b>	<b>N/A</b>	<b>N/A</b>	<b>N/A</b>
Change from prior year		33.3%	25.0%	-45.5%			
<b>New Listings</b>		<b>38</b>	<b>39</b>	<b>52</b>	<b>949</b>	<b>1,082</b>	<b>1,301</b>
Change from prior year		-2.6%	-25.0%	8.3%	-12.3%	-16.8%	10.1%
<b>Contracts Written</b>		<b>48</b>	<b>35</b>	<b>69</b>	<b>817</b>	<b>927</b>	<b>1,155</b>
Change from prior year		37.1%	-49.3%	27.8%	-11.9%	-19.7%	19.3%
<b>Pending Contracts</b>		<b>81</b>	<b>60</b>	<b>114</b>	<b>N/A</b>	<b>N/A</b>	<b>N/A</b>
Change from prior year		35.0%	-47.4%	10.7%			
<b>Sales Volume (1,000s)</b>		<b>13,522</b>	<b>12,891</b>	<b>23,148</b>	<b>218,425</b>	<b>240,729</b>	<b>272,394</b>
Change from prior year		4.9%	-44.3%	34.8%	-9.3%	-11.6%	32.8%
<b>Average</b>	<b>Sale Price</b>	<b>275,961</b>	<b>238,726</b>	<b>257,195</b>	<b>277,189</b>	<b>247,155</b>	<b>237,484</b>
	Change from prior year	15.6%	-7.2%	22.9%	12.2%	4.1%	10.2%
	<b>List Price of Actives</b>	<b>313,791</b>	<b>311,834</b>	<b>263,144</b>	<b>N/A</b>	<b>N/A</b>	<b>N/A</b>
	Change from prior year	0.6%	18.5%	0.5%			
	<b>Days on Market</b>	<b>40</b>	<b>36</b>	<b>37</b>	<b>33</b>	<b>26</b>	<b>35</b>
Change from prior year	11.1%	-2.7%	-31.5%	26.9%	-25.7%	-38.6%	
<b>Percent of List</b>	<b>98.3%</b>	<b>98.8%</b>	<b>99.3%</b>	<b>98.7%</b>	<b>99.4%</b>	<b>99.2%</b>	
Change from prior year	-0.5%	-0.5%	2.4%	-0.7%	0.2%	1.3%	
<b>Percent of Original</b>	<b>96.0%</b>	<b>97.6%</b>	<b>97.2%</b>	<b>97.4%</b>	<b>98.4%</b>	<b>98.0%</b>	
Change from prior year	-1.6%	0.4%	2.6%	-1.0%	0.4%	2.2%	
<b>Median</b>	<b>Sale Price</b>	<b>233,000</b>	<b>237,000</b>	<b>217,500</b>	<b>244,900</b>	<b>226,000</b>	<b>215,000</b>
	Change from prior year	-1.7%	9.0%	14.5%	8.4%	5.1%	10.8%
	<b>List Price of Actives</b>	<b>275,000</b>	<b>249,500</b>	<b>199,950</b>	<b>N/A</b>	<b>N/A</b>	<b>N/A</b>
	Change from prior year	10.2%	24.8%	3.1%			
	<b>Days on Market</b>	<b>14</b>	<b>11</b>	<b>16</b>	<b>10</b>	<b>8</b>	<b>12</b>
Change from prior year	27.3%	-31.3%	-33.3%	25.0%	-33.3%	-55.6%	
<b>Percent of List</b>	<b>100.0%</b>	<b>99.9%</b>	<b>100.0%</b>	<b>100.0%</b>	<b>100.0%</b>	<b>100.0%</b>	
Change from prior year	0.1%	-0.1%	2.1%	0.0%	0.0%	1.5%	
<b>Percent of Original</b>	<b>98.3%</b>	<b>98.8%</b>	<b>99.1%</b>	<b>99.5%</b>	<b>100.0%</b>	<b>99.7%</b>	
Change from prior year	-0.5%	-0.3%	2.3%	-0.5%	0.3%	2.3%	

Note: Year-to-date statistics cannot be calculated for Active Listings, Months' Supply and Pending Contracts.



## Riley County Closed Listings Analysis

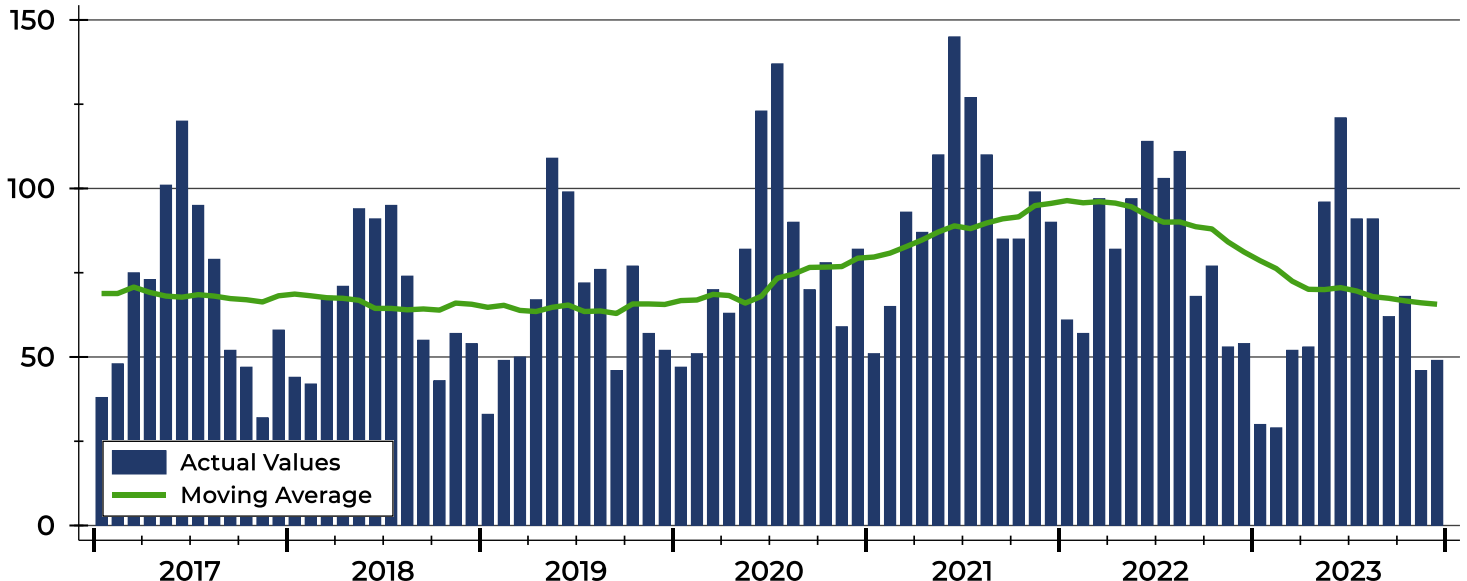
Summary Statistics for Closed Listings		2023	December 2022	Change	2023	Year-to-Date 2022	Change
Closed Listings		<b>49</b>	54	-9.3%	<b>788</b>	974	-19.1%
Volume (1,000s)		<b>13,522</b>	12,891	4.9%	<b>218,425</b>	240,729	-9.3%
Months' Supply		<b>2.0</b>	1.5	33.3%	<b>N/A</b>	N/A	N/A
Average	Sale Price	<b>275,961</b>	238,726	15.6%	<b>277,189</b>	247,155	12.2%
	Days on Market	<b>40</b>	36	11.1%	<b>33</b>	26	26.9%
	Percent of List	<b>98.3%</b>	98.8%	-0.5%	<b>98.7%</b>	99.4%	-0.7%
	Percent of Original	<b>96.0%</b>	97.6%	-1.6%	<b>97.4%</b>	98.4%	-1.0%
Median	Sale Price	<b>233,000</b>	237,000	-1.7%	<b>244,900</b>	226,000	8.4%
	Days on Market	<b>14</b>	11	27.3%	<b>10</b>	8	25.0%
	Percent of List	<b>100.0%</b>	99.9%	0.1%	<b>100.0%</b>	100.0%	0.0%
	Percent of Original	<b>98.3%</b>	98.8%	-0.5%	<b>99.5%</b>	100.0%	-0.5%

A total of 49 homes sold in Riley County in December, down from 54 units in December 2022. Total sales volume rose to \$13.5 million compared to \$12.9 million in the previous year.

The median sales price in December was \$233,000, down 1.7% compared to the prior year. Median days on market was 14 days, down from 24 days in November, but up from 11 in December 2022.

## History of Closed Listings

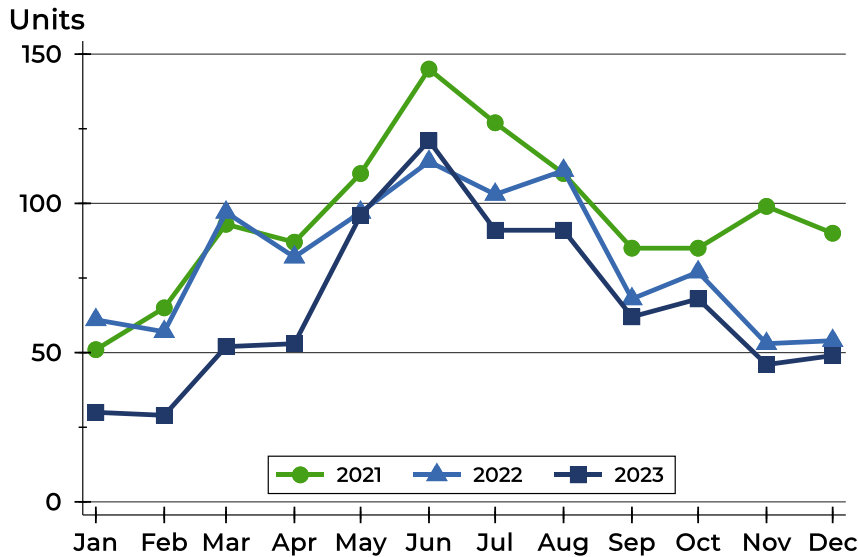
Units





## Riley County Closed Listings Analysis

### Closed Listings by Month



Month	2021	2022	2023
January	51	61	30
February	65	57	29
March	93	97	52
April	87	82	53
May	110	97	96
June	145	114	121
July	127	103	91
August	110	111	91
September	85	68	62
October	85	77	68
November	99	53	46
December	90	54	49

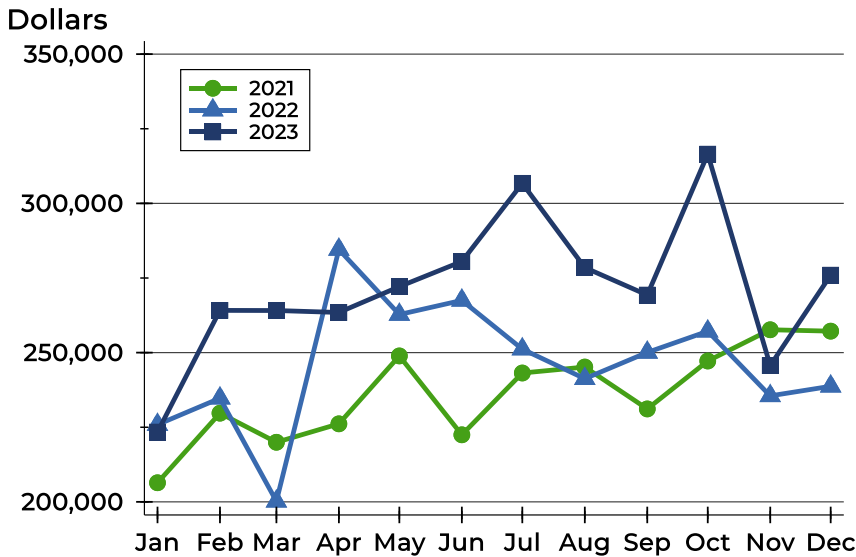
### Closed Listings by Price Range

Price Range	Sales		Months' Supply	Sale Price		Days on Market		Price as % of List		Price as % of Orig.	
	Number	Percent		Average	Median	Avg.	Med.	Avg.	Med.	Avg.	Med.
Below \$25,000	0	0.0%	N/A	N/A	N/A	N/A	N/A	N/A	N/A	N/A	N/A
\$25,000-\$49,999	0	0.0%	N/A	N/A	N/A	N/A	N/A	N/A	N/A	N/A	N/A
\$50,000-\$99,999	2	4.1%	15.0	74,950	74,950	68	68	84.7%	84.7%	76.7%	76.7%
\$100,000-\$124,999	2	4.1%	3.4	107,000	107,000	69	69	91.6%	91.6%	83.9%	83.9%
\$125,000-\$149,999	2	4.1%	1.7	141,000	141,000	9	9	100.0%	100.0%	100.0%	100.0%
\$150,000-\$174,999	7	14.3%	1.5	163,714	165,500	27	12	97.6%	100.0%	94.3%	97.2%
\$175,000-\$199,999	4	8.2%	1.3	183,750	181,000	8	8	96.9%	98.0%	96.9%	98.0%
\$200,000-\$249,999	10	20.4%	0.8	223,750	220,000	52	21	99.8%	99.8%	97.9%	99.4%
\$250,000-\$299,999	7	14.3%	2.9	277,207	282,000	40	14	98.8%	98.3%	97.5%	97.7%
\$300,000-\$399,999	7	14.3%	1.9	340,221	349,900	51	10	99.6%	100.0%	96.3%	96.0%
\$400,000-\$499,999	3	6.1%	1.7	445,979	465,000	43	10	98.0%	100.0%	96.7%	100.0%
\$500,000-\$749,999	4	8.2%	2.6	581,684	560,100	32	32	102.3%	99.5%	101.8%	99.5%
\$750,000-\$999,999	1	2.0%	5.3	771,000	771,000	5	5	102.9%	102.9%	102.9%	102.9%
\$1,000,000 and up	0	0.0%	N/A	N/A	N/A	N/A	N/A	N/A	N/A	N/A	N/A



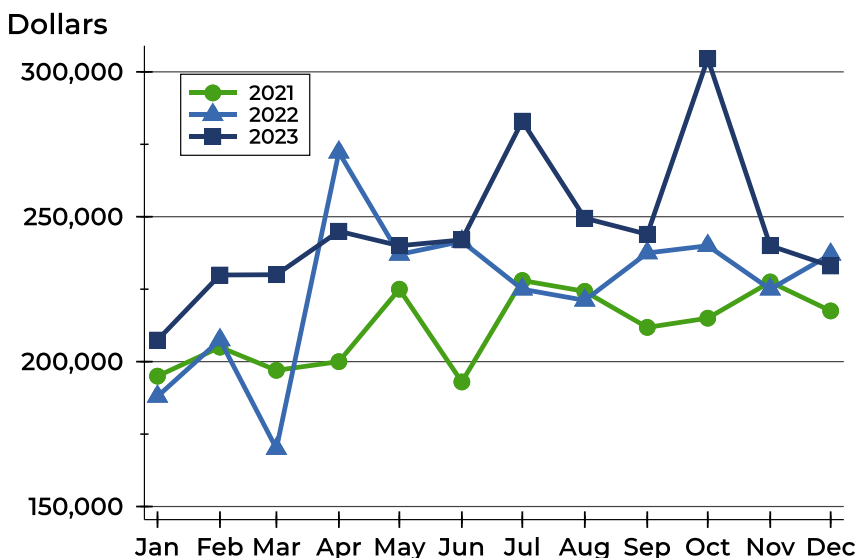
## Riley County Closed Listings Analysis

### Average Price



Month	2021	2022	2023
<b>January</b>	206,402	225,875	<b>223,398</b>
<b>February</b>	229,715	234,723	<b>264,153</b>
<b>March</b>	219,973	200,196	<b>264,104</b>
<b>April</b>	226,152	284,561	<b>263,458</b>
<b>May</b>	248,898	262,771	<b>272,119</b>
<b>June</b>	222,470	267,511	<b>280,542</b>
<b>July</b>	243,175	251,180	<b>306,725</b>
<b>August</b>	245,172	241,275	<b>278,493</b>
<b>September</b>	231,140	250,074	<b>269,304</b>
<b>October</b>	247,194	257,164	<b>316,505</b>
<b>November</b>	257,661	235,522	<b>245,660</b>
<b>December</b>	257,195	238,726	<b>275,961</b>

### Median Price

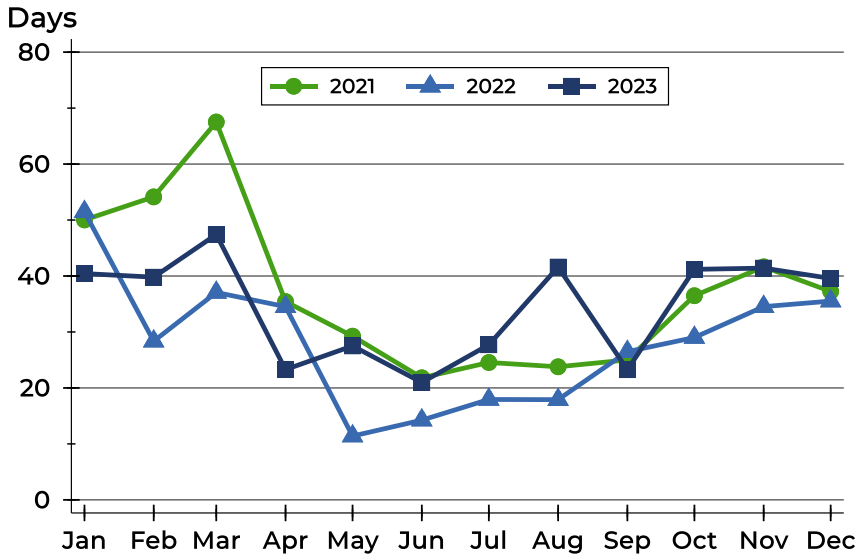


Month	2021	2022	2023
<b>January</b>	195,000	188,000	<b>207,450</b>
<b>February</b>	205,000	207,500	<b>229,900</b>
<b>March</b>	197,000	170,000	<b>230,000</b>
<b>April</b>	200,000	272,250	<b>245,000</b>
<b>May</b>	225,000	237,000	<b>240,000</b>
<b>June</b>	193,000	241,500	<b>242,000</b>
<b>July</b>	228,000	225,000	<b>283,000</b>
<b>August</b>	224,250	221,159	<b>249,500</b>
<b>September</b>	211,819	237,500	<b>243,950</b>
<b>October</b>	215,000	240,000	<b>304,500</b>
<b>November</b>	227,500	225,000	<b>240,000</b>
<b>December</b>	217,500	237,000	<b>233,000</b>



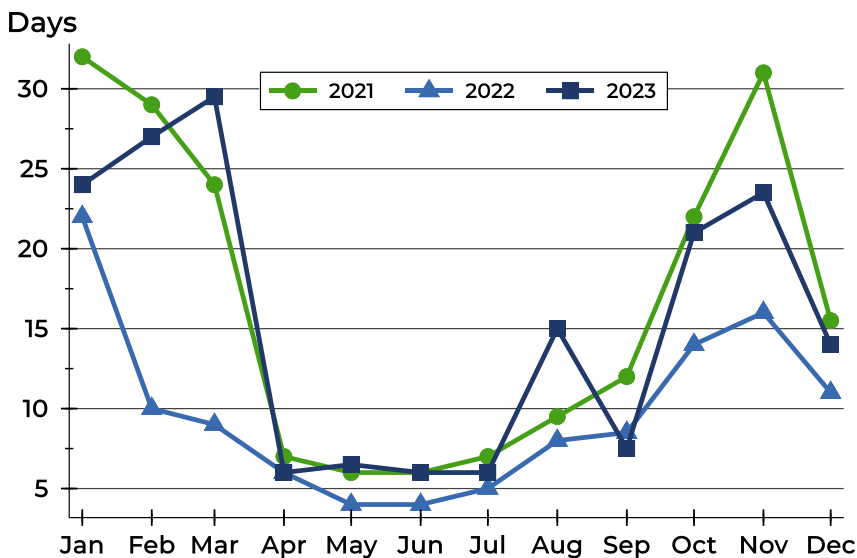
## Riley County Closed Listings Analysis

### Average DOM



Month	2021	2022	2023
January	50	51	40
February	54	28	40
March	68	37	47
April	35	35	23
May	29	11	28
June	22	14	21
July	25	18	28
August	24	18	42
September	25	26	23
October	36	29	41
November	42	35	41
December	37	36	40

### Median DOM



Month	2021	2022	2023
January	32	22	24
February	29	10	27
March	24	9	30
April	7	6	6
May	6	4	7
June	6	4	6
July	7	5	6
August	10	8	15
September	12	9	8
October	22	14	21
November	31	16	24
December	16	11	14



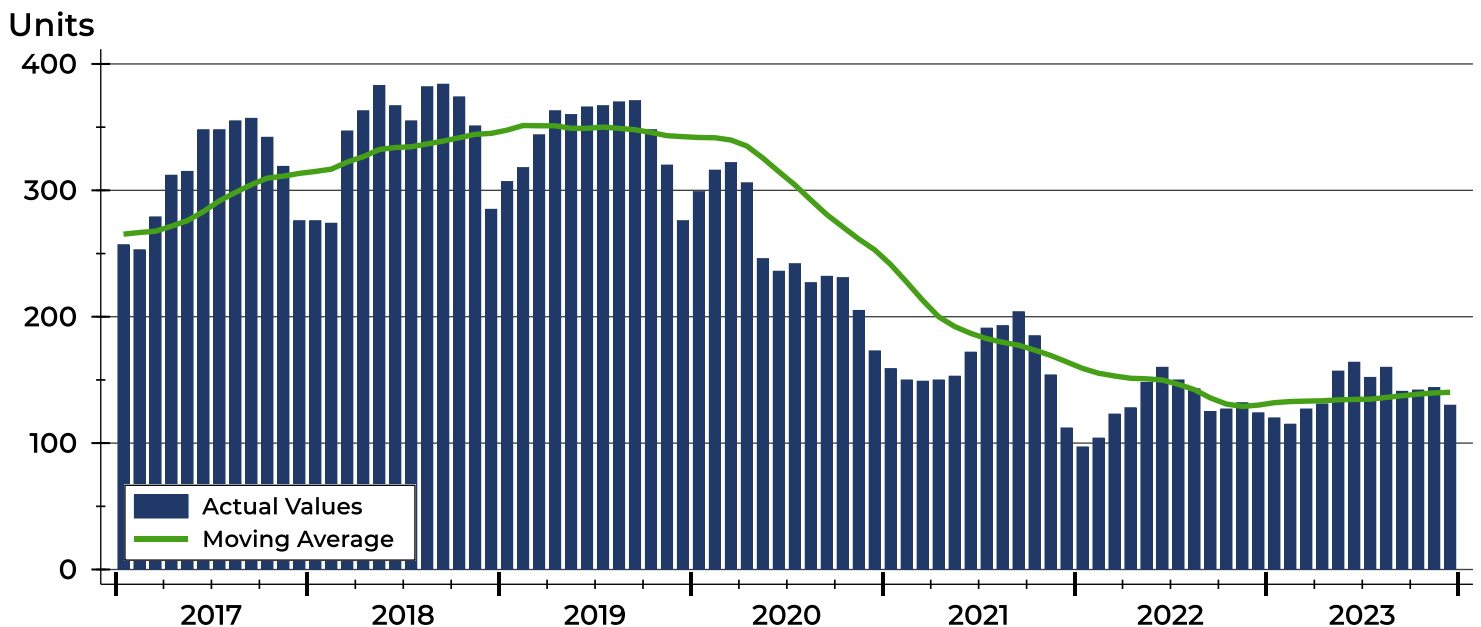
# Riley County Active Listings Analysis

Summary Statistics for Active Listings		2023	2022	Change
Active Listings		130	124	4.8%
Volume (1,000s)		40,793	38,667	5.5%
Months' Supply		2.0	1.5	33.3%
Average	List Price	313,791	311,834	0.6%
	Days on Market	88	79	11.4%
	Percent of Original	97.6%	97.8%	-0.2%
Median	List Price	275,000	249,500	10.2%
	Days on Market	61	59	3.4%
	Percent of Original	100.0%	100.0%	0.0%

A total of 130 homes were available for sale in Riley County at the end of December. This represents a 2.0 months' supply of active listings.

The median list price of homes on the market at the end of December was \$275,000, up 10.2% from 2022. The typical time on market for active listings was 61 days, up from 59 days a year earlier.

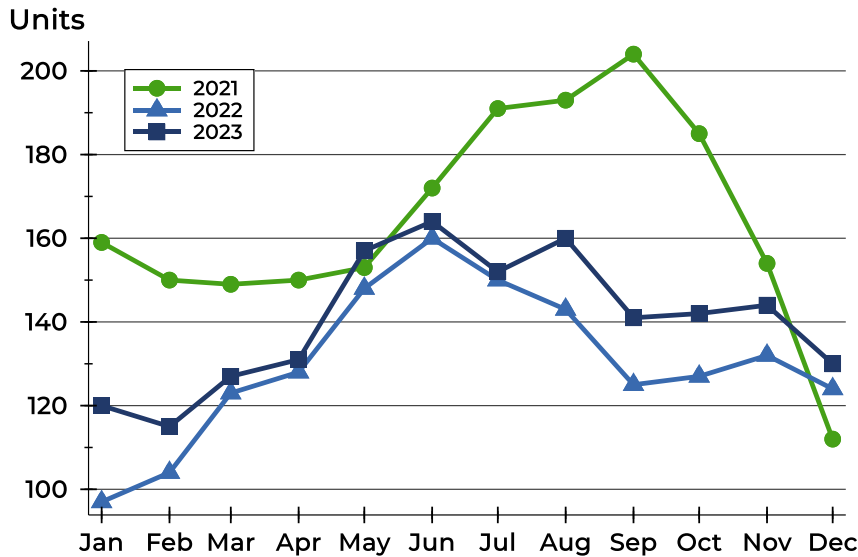
## History of Active Listings





## Riley County Active Listings Analysis

### Active Listings by Month



Month	2021	2022	2023
January	159	97	120
February	150	104	115
March	149	123	127
April	150	128	131
May	153	148	157
June	172	160	164
July	191	150	152
August	193	143	160
September	204	125	141
October	185	127	142
November	154	132	144
December	112	124	130

### Active Listings by Price Range

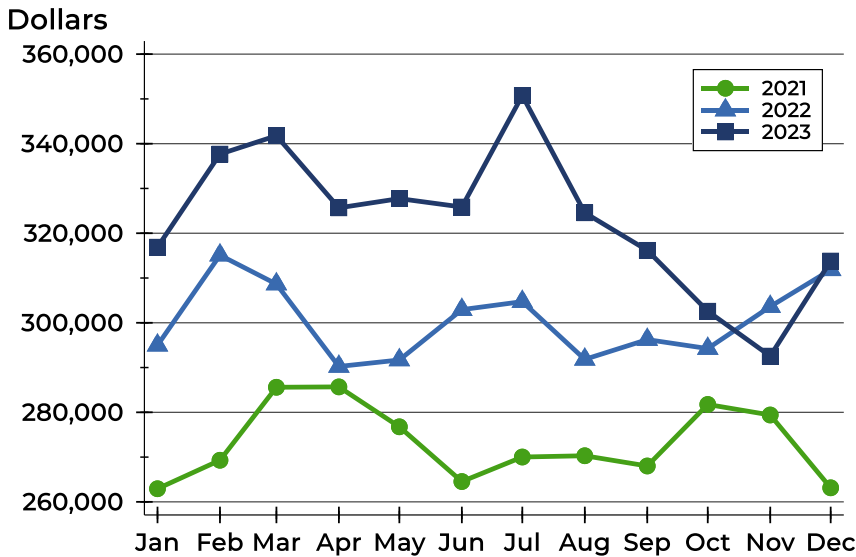
Price Range	Active Listings Number	Active Listings Percent	Months' Supply	List Price Average	List Price Median	Days on Market Avg.	Days on Market Med.	Price as % of Orig. Avg.	Price as % of Orig. Med.
Below \$25,000	0	0.0%	N/A	N/A	N/A	N/A	N/A	N/A	N/A
\$25,000-\$49,999	1	0.8%	N/A	49,900	49,900	74	74	84.6%	84.6%
\$50,000-\$99,999	10	7.7%	15.0	80,250	77,450	104	96	92.9%	97.6%
\$100,000-\$124,999	9	6.9%	3.4	115,054	115,000	89	61	96.2%	100.0%
\$125,000-\$149,999	6	4.6%	1.7	139,750	139,750	67	59	99.2%	100.0%
\$150,000-\$174,999	9	6.9%	1.5	165,644	167,000	44	27	99.5%	100.0%
\$175,000-\$199,999	9	6.9%	1.3	191,433	189,900	60	52	98.6%	100.0%
\$200,000-\$249,999	11	8.5%	0.8	231,673	234,900	92	83	97.5%	100.0%
\$250,000-\$299,999	26	20.0%	2.9	278,896	279,700	77	53	97.3%	100.0%
\$300,000-\$399,999	26	20.0%	1.9	354,806	359,950	75	52	98.5%	99.4%
\$400,000-\$499,999	8	6.2%	1.7	447,050	439,500	125	127	98.1%	100.0%
\$500,000-\$749,999	9	6.9%	2.6	624,294	611,144	75	25	100.6%	100.0%
\$750,000-\$999,999	4	3.1%	5.3	889,500	925,000	253	111	93.3%	96.7%
\$1,000,000 and up	2	1.5%	N/A	1,537,500	1,537,500	249	249	100.0%	100.0%





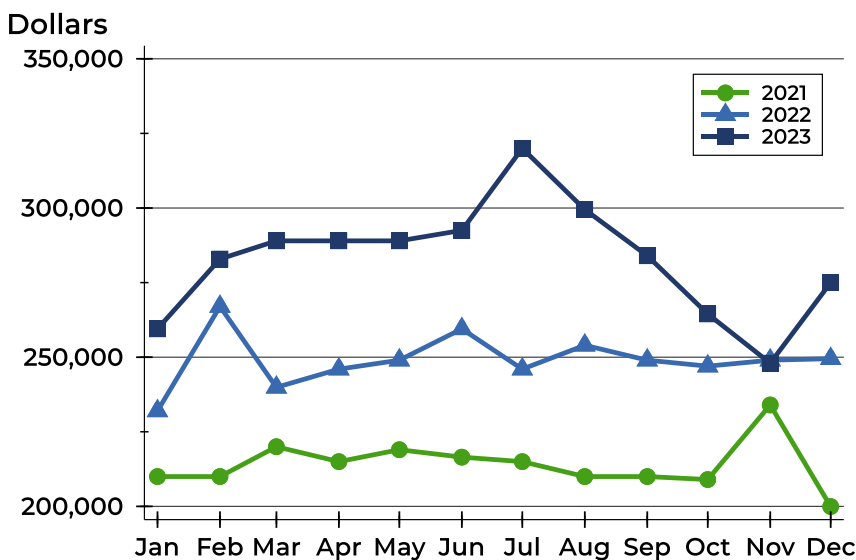
## Riley County Active Listings Analysis

### Average Price



Month	2021	2022	2023
January	262,929	294,980	<b>316,889</b>
February	269,299	315,098	<b>337,680</b>
March	285,597	308,649	<b>341,768</b>
April	285,687	290,244	<b>325,675</b>
May	276,770	291,693	<b>327,740</b>
June	264,539	302,934	<b>325,855</b>
July	270,021	304,729	<b>350,757</b>
August	270,304	291,827	<b>324,571</b>
September	268,017	296,245	<b>316,188</b>
October	281,756	294,245	<b>302,591</b>
November	279,402	303,615	<b>292,564</b>
December	263,144	311,834	<b>313,791</b>

### Median Price

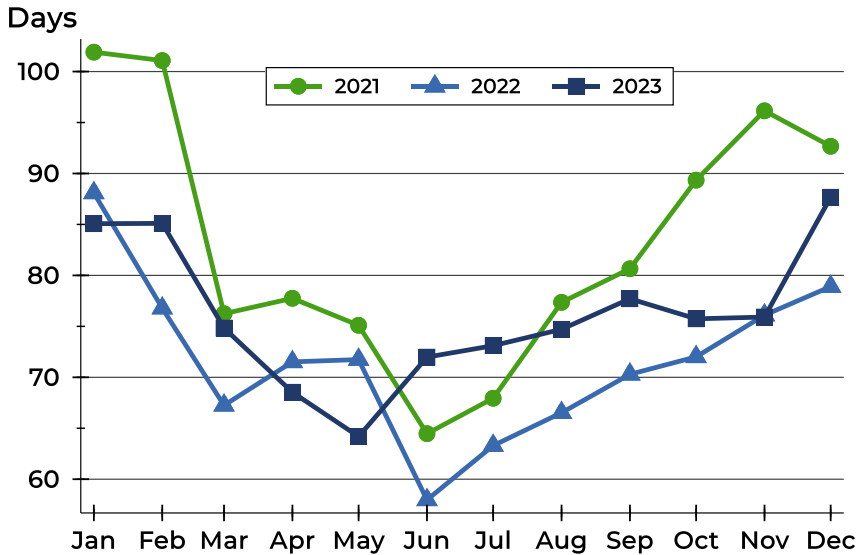


Month	2021	2022	2023
January	210,000	232,000	<b>259,500</b>
February	210,000	267,000	<b>282,900</b>
March	220,000	239,900	<b>289,000</b>
April	215,000	246,000	<b>289,000</b>
May	219,000	249,000	<b>289,000</b>
June	216,500	259,500	<b>292,500</b>
July	215,000	246,000	<b>320,000</b>
August	210,000	254,000	<b>299,500</b>
September	210,000	249,000	<b>284,000</b>
October	209,000	247,000	<b>264,500</b>
November	234,000	249,000	<b>248,000</b>
December	199,950	249,500	<b>275,000</b>



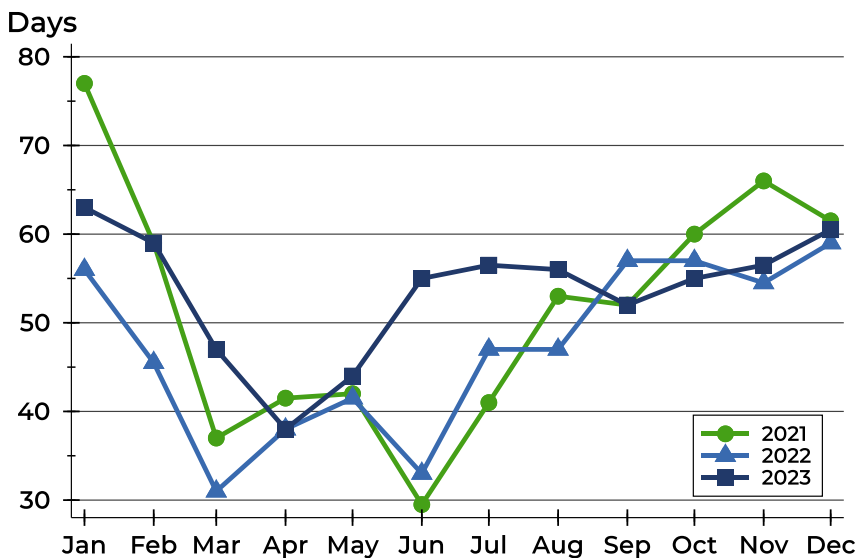
## Riley County Active Listings Analysis

### Average DOM



Month	2021	2022	2023
January	102	88	<b>85</b>
February	101	77	<b>85</b>
March	76	67	<b>75</b>
April	78	72	<b>69</b>
May	75	72	<b>64</b>
June	64	58	<b>72</b>
July	68	63	<b>73</b>
August	77	67	<b>75</b>
September	81	70	<b>78</b>
October	89	72	<b>76</b>
November	96	76	<b>76</b>
December	93	79	<b>88</b>

### Median DOM

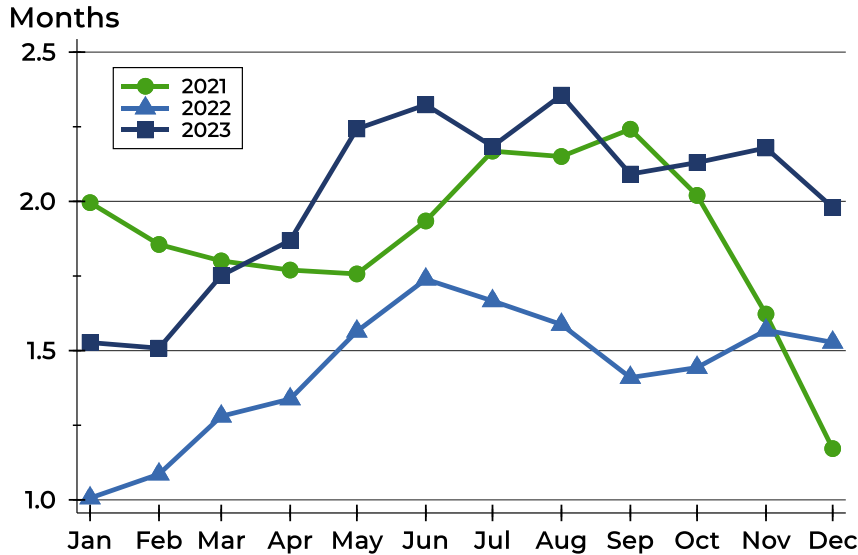


Month	2021	2022	2023
January	77	56	<b>63</b>
February	59	46	<b>59</b>
March	37	31	<b>47</b>
April	42	38	<b>38</b>
May	42	42	<b>44</b>
June	30	33	<b>55</b>
July	41	47	<b>57</b>
August	53	47	<b>56</b>
September	52	57	<b>52</b>
October	60	57	<b>55</b>
November	66	55	<b>57</b>
December	62	59	<b>61</b>



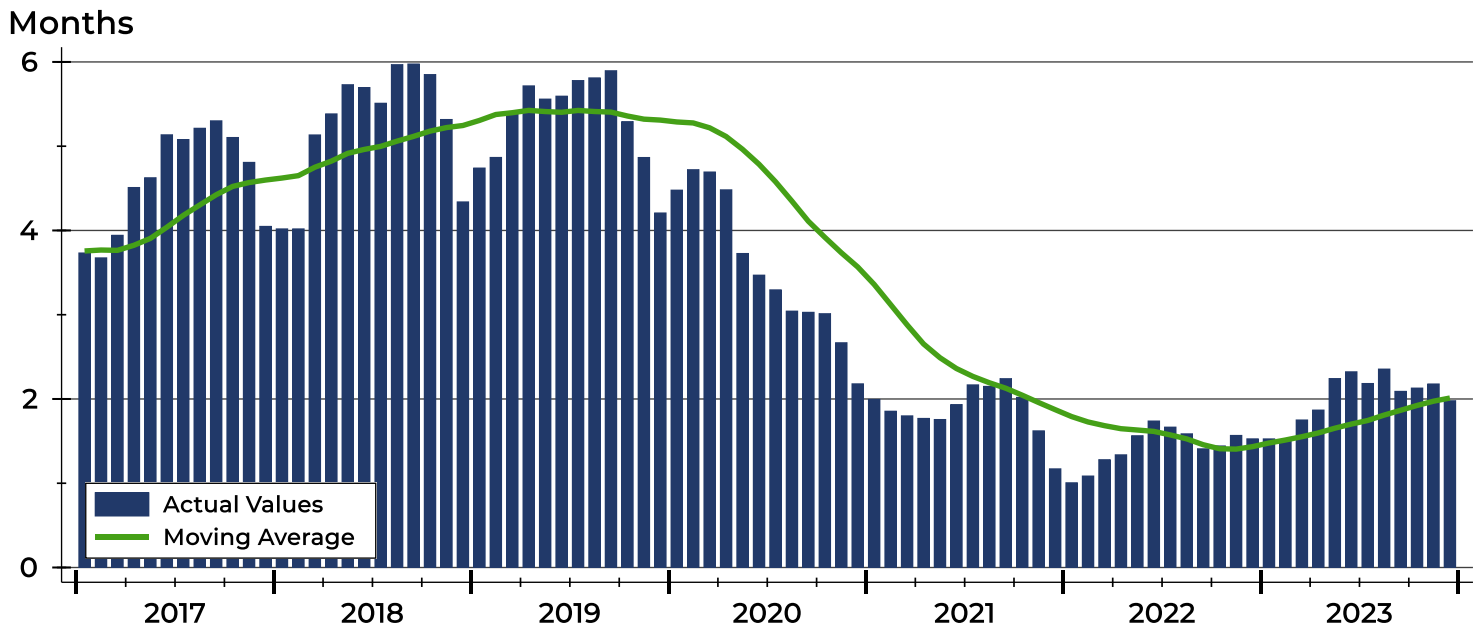
# Riley County Months' Supply Analysis

## Months' Supply by Month



Month	2021	2022	2023
January	2.0	1.0	1.5
February	1.9	1.1	1.5
March	1.8	1.3	1.8
April	1.8	1.3	1.9
May	1.8	1.6	2.2
June	1.9	1.7	2.3
July	2.2	1.7	2.2
August	2.2	1.6	2.4
September	2.2	1.4	2.1
October	2.0	1.4	2.1
November	1.6	1.6	2.2
December	1.2	1.5	2.0

## History of Month's Supply





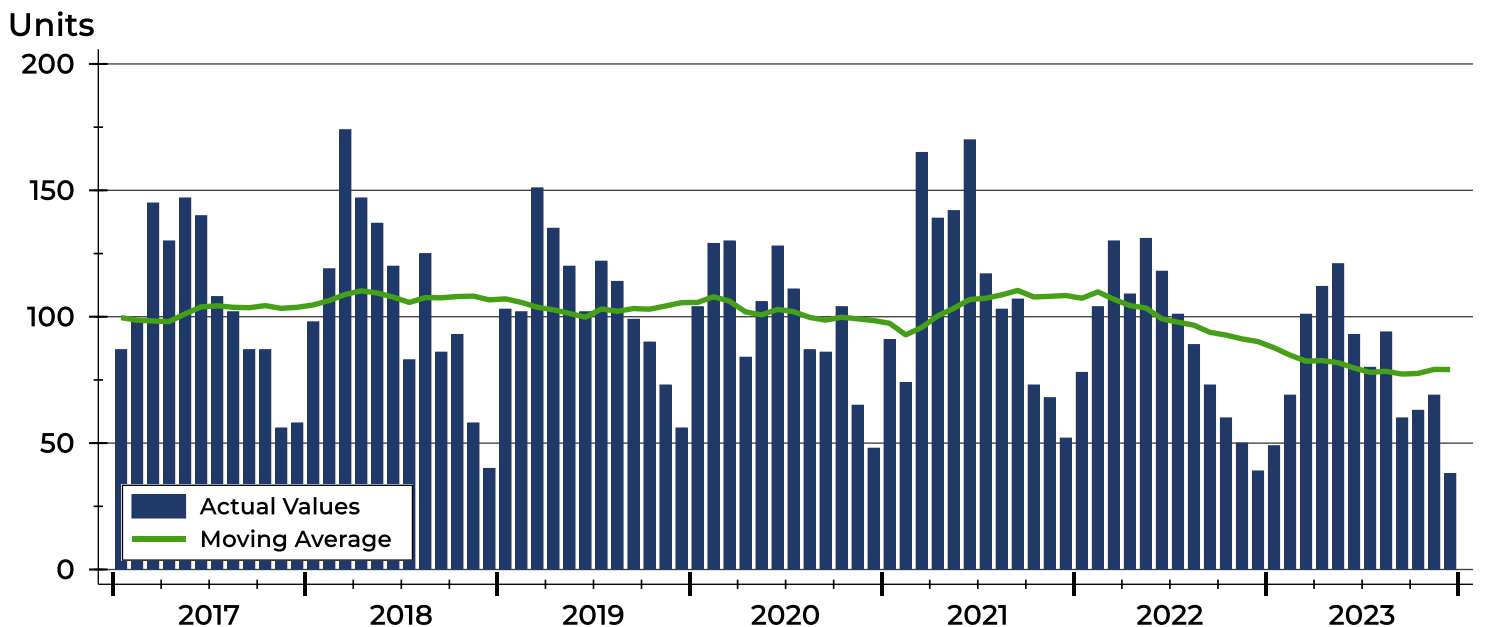
# Riley County New Listings Analysis

Summary Statistics for New Listings		2023	December 2022	Change
Current Month	New Listings	<b>38</b>	39	-2.6%
	Volume (1,000s)	<b>10,968</b>	10,604	3.4%
	Average List Price	<b>288,634</b>	271,909	6.2%
	Median List Price	<b>264,500</b>	229,900	15.1%
Year-to-Date	New Listings	<b>949</b>	1,082	-12.3%
	Volume (1,000s)	<b>270,192</b>	280,674	-3.7%
	Average List Price	<b>284,713</b>	259,403	9.8%
	Median List Price	<b>250,000</b>	230,000	8.7%

A total of 38 new listings were added in Riley County during December, down 2.6% from the same month in 2022. Year-to-date Riley County has seen 949 new listings.

The median list price of these homes was \$264,500 up from \$229,900 in 2022.

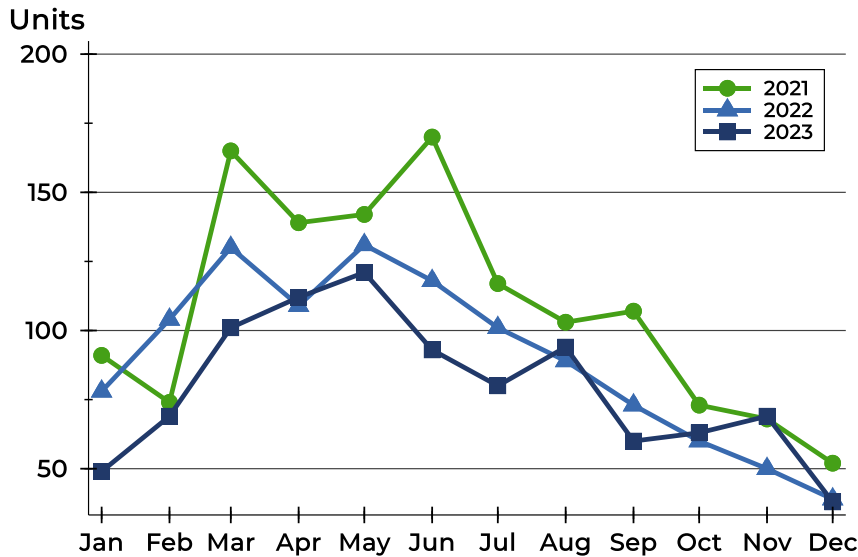
## History of New Listings





## Riley County New Listings Analysis

### New Listings by Month



Month	2021	2022	2023
January	91	78	49
February	74	104	69
March	165	130	101
April	139	109	112
May	142	131	121
June	170	118	93
July	117	101	80
August	103	89	94
September	107	73	60
October	73	60	63
November	68	50	69
December	52	39	38

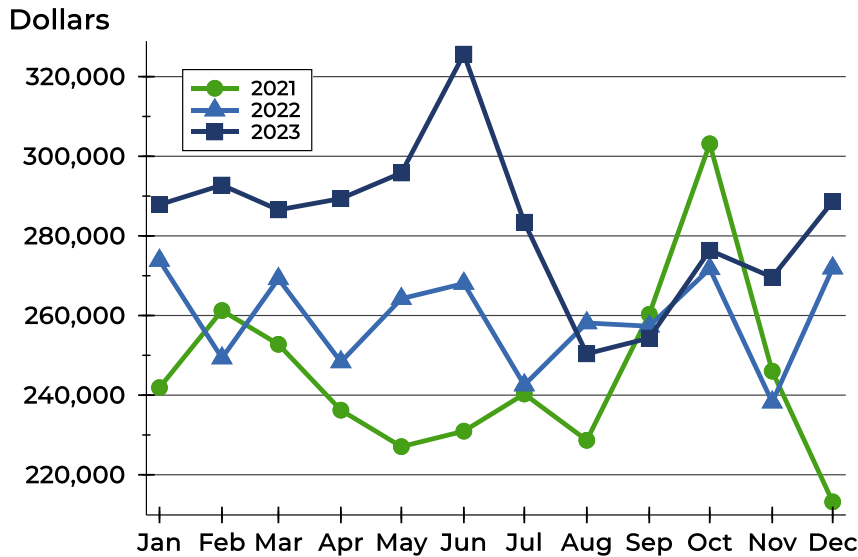
### New Listings by Price Range

Price Range	New Listings		List Price		Days on Market		Price as % of Orig.	
	Number	Percent	Average	Median	Avg.	Med.	Avg.	Med.
Below \$25,000	0	0.0%	N/A	N/A	N/A	N/A	N/A	N/A
\$25,000-\$49,999	0	0.0%	N/A	N/A	N/A	N/A	N/A	N/A
\$50,000-\$99,999	2	5.3%	69,950	69,950	27	27	93.7%	93.7%
\$100,000-\$124,999	1	2.6%	124,690	124,690	26	26	100.0%	100.0%
\$125,000-\$149,999	1	2.6%	149,000	149,000	23	23	103.5%	103.5%
\$150,000-\$174,999	3	7.9%	165,633	165,000	27	30	100.0%	100.0%
\$175,000-\$199,999	4	10.5%	189,875	188,500	18	16	98.7%	100.0%
\$200,000-\$249,999	4	10.5%	231,725	232,450	9	9	100.0%	100.0%
\$250,000-\$299,999	10	26.3%	272,230	272,000	18	17	99.3%	100.0%
\$300,000-\$399,999	8	21.1%	348,863	341,950	18	16	99.5%	100.0%
\$400,000-\$499,999	2	5.3%	463,250	463,250	21	21	100.0%	100.0%
\$500,000-\$749,999	3	7.9%	643,833	598,500	26	31	99.4%	100.0%
\$750,000-\$999,999	0	0.0%	N/A	N/A	N/A	N/A	N/A	N/A
\$1,000,000 and up	0	0.0%	N/A	N/A	N/A	N/A	N/A	N/A



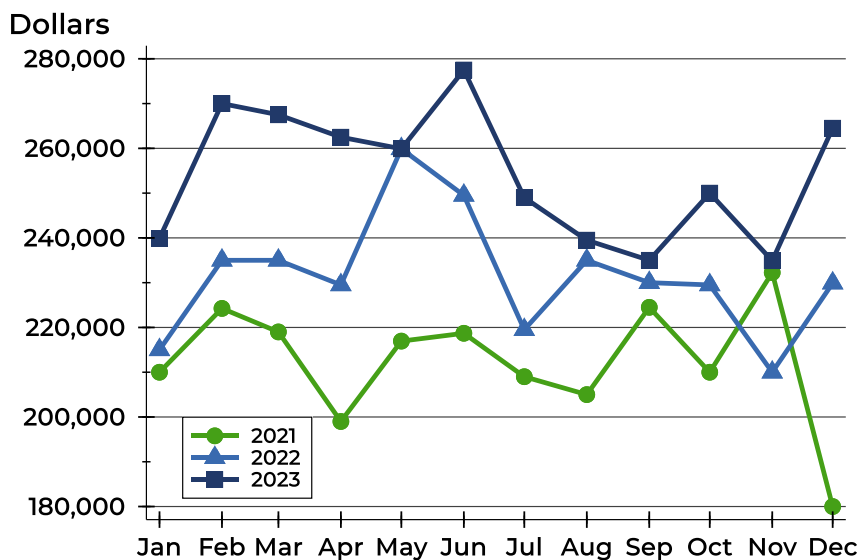
## Riley County New Listings Analysis

### Average Price



Month	2021	2022	2023
January	241,888	273,821	<b>287,852</b>
February	261,254	249,317	<b>292,767</b>
March	252,772	269,234	<b>286,544</b>
April	236,225	248,339	<b>289,376</b>
May	227,067	264,226	<b>295,812</b>
June	230,952	268,046	<b>325,656</b>
July	240,298	242,536	<b>283,440</b>
August	228,658	258,135	<b>250,388</b>
September	260,308	257,311	<b>254,345</b>
October	303,145	271,739	<b>276,391</b>
November	246,026	238,235	<b>269,609</b>
December	213,190	271,909	<b>288,634</b>

### Median Price



Month	2021	2022	2023
January	210,000	215,000	<b>239,900</b>
February	224,250	235,000	<b>270,000</b>
March	219,000	235,000	<b>267,500</b>
April	199,000	229,500	<b>262,500</b>
May	216,950	259,900	<b>259,900</b>
June	218,700	249,500	<b>277,500</b>
July	209,000	219,500	<b>249,000</b>
August	205,000	235,000	<b>239,500</b>
September	224,500	230,000	<b>235,000</b>
October	209,999	229,500	<b>250,000</b>
November	232,250	210,000	<b>234,900</b>
December	180,000	229,900	<b>264,500</b>



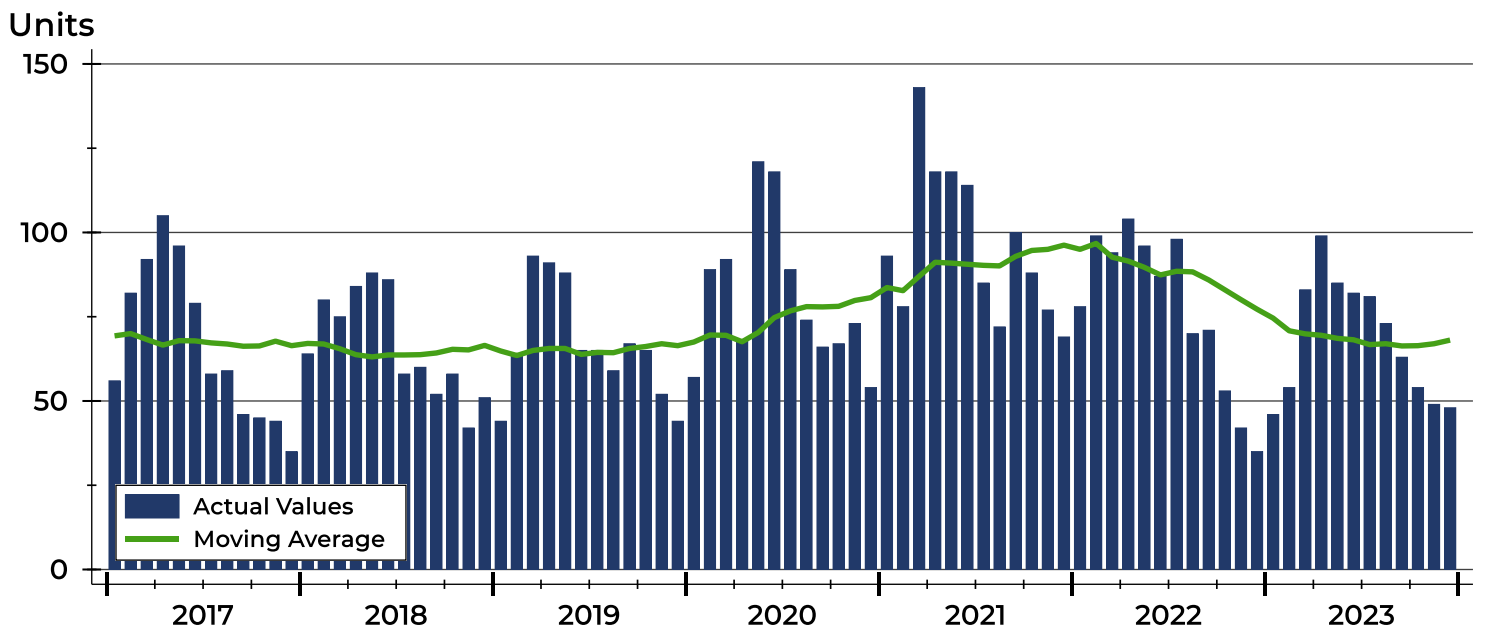
# Riley County Contracts Written Analysis

Summary Statistics for Contracts Written		December			Year-to-Date		
		2023	2022	Change	2023	2022	Change
Contracts Written		48	35	37.1%	817	927	-11.9%
Volume (1,000s)		10,846	8,156	33.0%	229,136	230,206	-0.5%
Average	Sale Price	225,952	233,020	-3.0%	280,460	248,334	12.9%
	Days on Market	44	52	-15.4%	33	25	32.0%
	Percent of Original	95.8%	95.8%	0.0%	97.5%	98.4%	-0.9%
Median	Sale Price	203,750	210,000	-3.0%	248,000	225,000	10.2%
	Days on Market	25	27	-7.4%	10	7	42.9%
	Percent of Original	100.0%	97.0%	3.1%	99.9%	100.0%	-0.1%

A total of 48 contracts for sale were written in Riley County during the month of December, up from 35 in 2022. The median list price of these homes was \$203,750, down from \$210,000 the prior year.

Half of the homes that went under contract in December were on the market less than 25 days, compared to 27 days in December 2022.

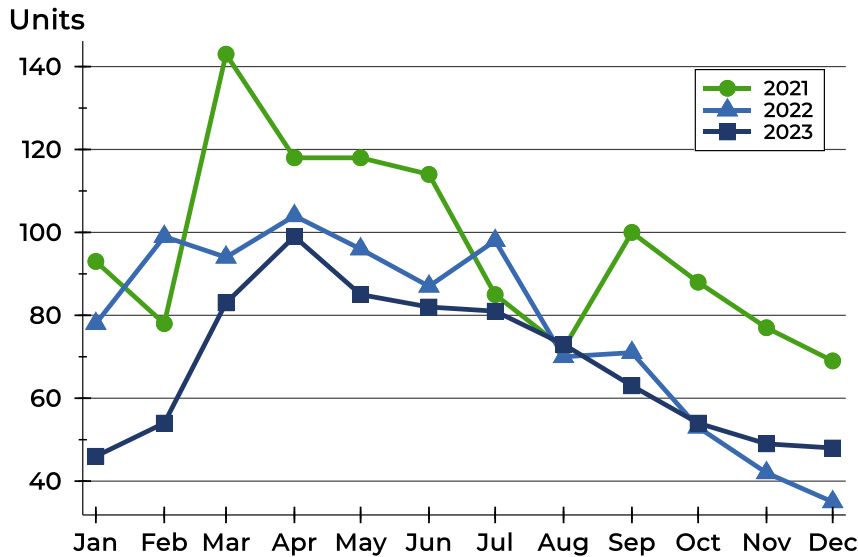
## History of Contracts Written





## Riley County Contracts Written Analysis

### Contracts Written by Month



Month	2021	2022	2023
January	93	78	46
February	78	99	54
March	143	94	83
April	118	104	99
May	118	96	85
June	114	87	82
July	85	98	81
August	72	70	73
September	100	71	63
October	88	53	54
November	77	42	49
December	69	35	48

### Contracts Written by Price Range

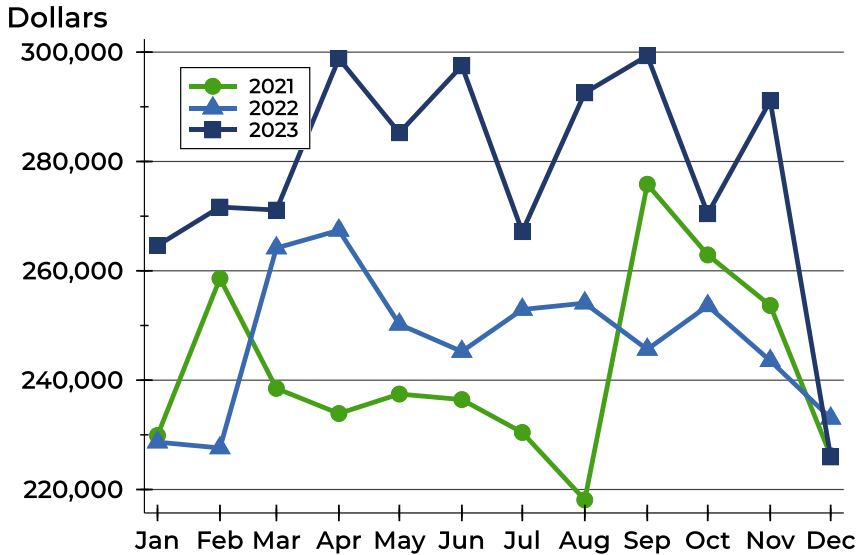
Price Range	Contracts Written		List Price		Days on Market		Price as % of Orig.	
	Number	Percent	Average	Median	Avg.	Med.	Avg.	Med.
Below \$25,000	0	0.0%	N/A	N/A	N/A	N/A	N/A	N/A
\$25,000-\$49,999	1	2.1%	49,900	49,900	113	113	71.4%	71.4%
\$50,000-\$99,999	3	6.3%	78,933	72,000	105	98	83.5%	92.8%
\$100,000-\$124,999	2	4.2%	111,000	111,000	31	31	92.3%	92.3%
\$125,000-\$149,999	4	8.3%	134,875	137,250	75	91	88.9%	88.1%
\$150,000-\$174,999	4	8.3%	164,500	168,000	38	23	99.3%	100.0%
\$175,000-\$199,999	9	18.8%	184,422	179,900	33	16	98.2%	100.0%
\$200,000-\$249,999	11	22.9%	224,482	225,000	28	18	99.6%	100.0%
\$250,000-\$299,999	4	8.3%	268,500	267,500	13	10	97.2%	98.7%
\$300,000-\$399,999	7	14.6%	349,200	338,000	33	32	96.1%	100.0%
\$400,000-\$499,999	2	4.2%	481,000	481,000	74	74	98.9%	98.9%
\$500,000-\$749,999	1	2.1%	530,000	530,000	135	135	100.0%	100.0%
\$750,000-\$999,999	0	0.0%	N/A	N/A	N/A	N/A	N/A	N/A
\$1,000,000 and up	0	0.0%	N/A	N/A	N/A	N/A	N/A	N/A





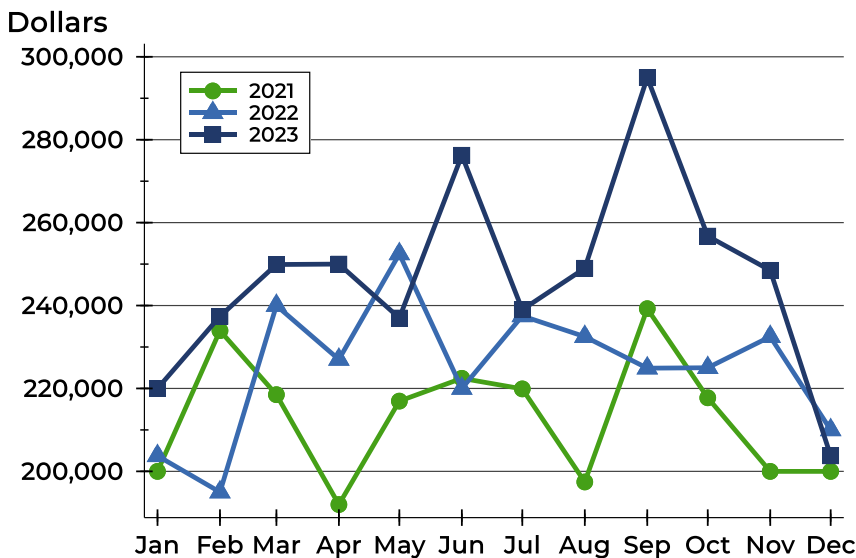
## Riley County Contracts Written Analysis

### Average Price



Month	2021	2022	2023
<b>January</b>	229,883	228,668	<b>264,630</b>
<b>February</b>	258,609	227,600	<b>271,664</b>
<b>March</b>	238,500	264,169	<b>271,114</b>
<b>April</b>	233,899	267,411	<b>298,818</b>
<b>May</b>	237,460	250,209	<b>285,244</b>
<b>June</b>	236,450	245,241	<b>297,489</b>
<b>July</b>	230,434	252,925	<b>267,157</b>
<b>August</b>	218,103	254,097	<b>292,554</b>
<b>September</b>	275,842	245,622	<b>299,340</b>
<b>October</b>	262,907	253,600	<b>270,441</b>
<b>November</b>	253,665	243,560	<b>291,096</b>
<b>December</b>	226,182	233,020	<b>225,952</b>

### Median Price

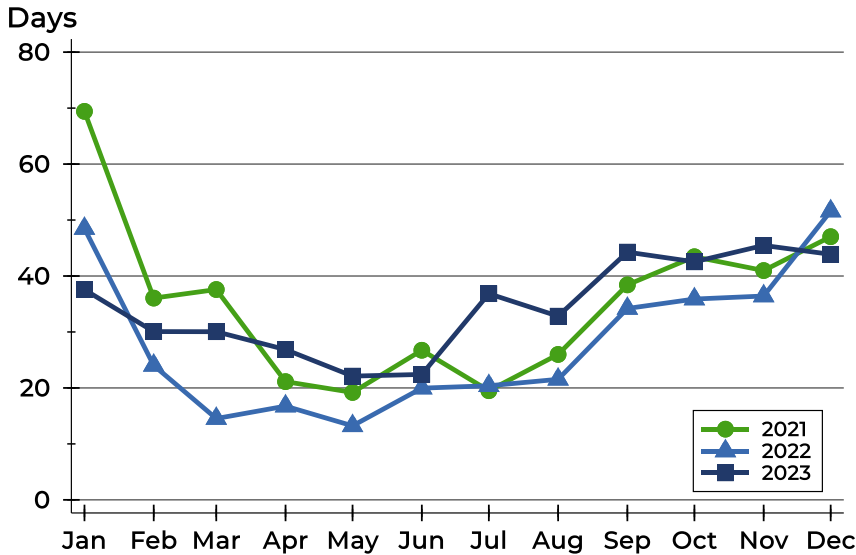


Month	2021	2022	2023
<b>January</b>	200,000	203,750	<b>220,000</b>
<b>February</b>	233,950	195,000	<b>237,400</b>
<b>March</b>	218,500	240,000	<b>249,900</b>
<b>April</b>	192,000	227,000	<b>250,000</b>
<b>May</b>	216,950	252,450	<b>237,000</b>
<b>June</b>	222,450	220,000	<b>276,250</b>
<b>July</b>	219,900	237,500	<b>239,000</b>
<b>August</b>	197,450	232,500	<b>249,000</b>
<b>September</b>	239,250	224,900	<b>295,000</b>
<b>October</b>	217,750	225,000	<b>256,750</b>
<b>November</b>	200,000	232,500	<b>248,500</b>
<b>December</b>	200,000	210,000	<b>203,750</b>



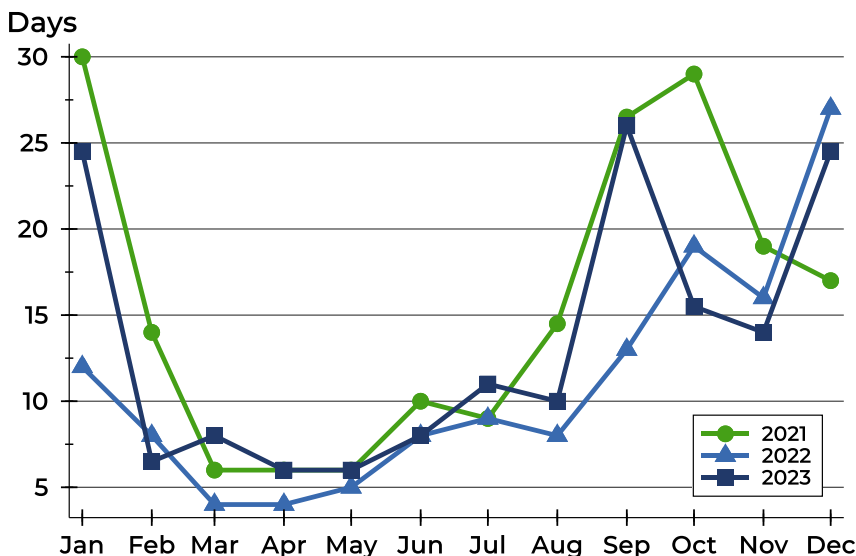
## Riley County Contracts Written Analysis

### Average DOM



Month	2021	2022	2023
January	69	48	<b>38</b>
February	36	24	<b>30</b>
March	38	15	<b>30</b>
April	21	17	<b>27</b>
May	19	13	<b>22</b>
June	27	20	<b>22</b>
July	20	20	<b>37</b>
August	26	22	<b>33</b>
September	38	34	<b>44</b>
October	43	36	<b>43</b>
November	41	36	<b>45</b>
December	47	52	<b>44</b>

### Median DOM



Month	2021	2022	2023
January	30	12	<b>25</b>
February	14	8	<b>7</b>
March	6	4	<b>8</b>
April	6	4	<b>6</b>
May	6	5	<b>6</b>
June	10	8	<b>8</b>
July	9	9	<b>11</b>
August	15	8	<b>10</b>
September	27	13	<b>26</b>
October	29	19	<b>16</b>
November	19	16	<b>14</b>
December	17	27	<b>25</b>



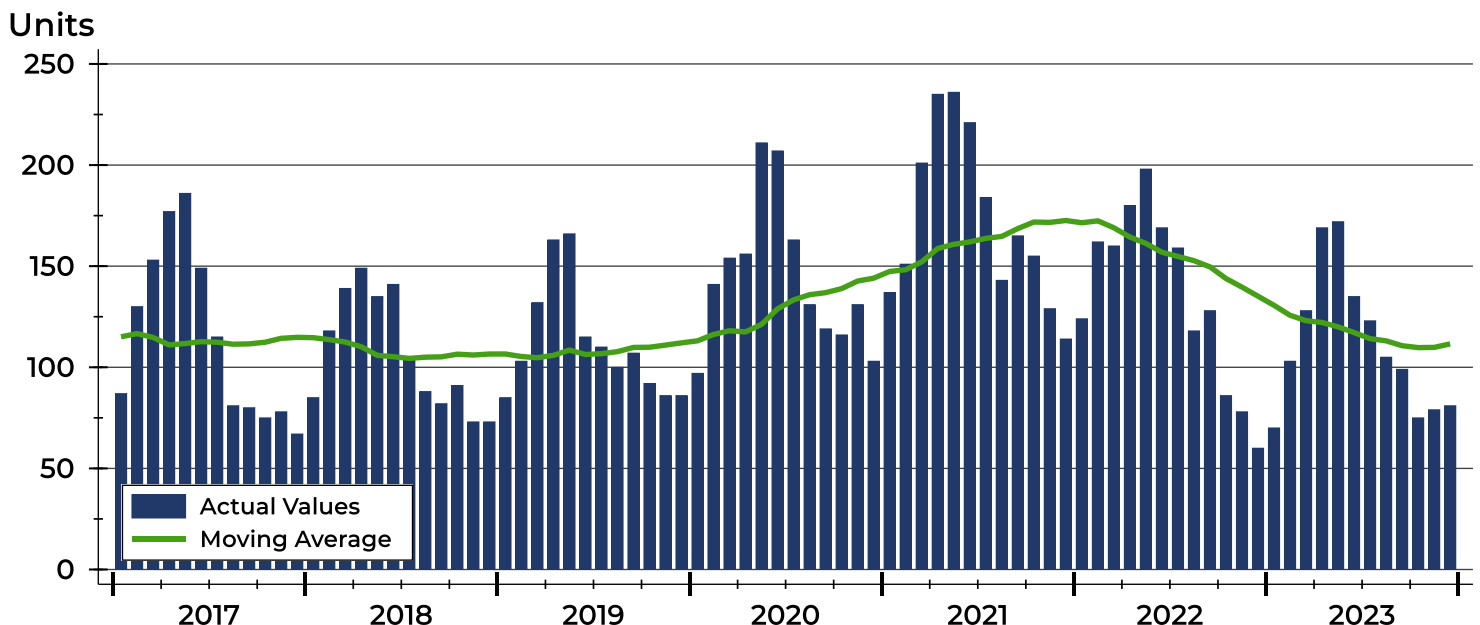
## Riley County Pending Contracts Analysis

Summary Statistics for Pending Contracts		End of December		
		2023	2022	Change
Pending Contracts		<b>81</b>	60	35.0%
Volume (1,000s)		<b>21,472</b>	14,360	49.5%
Average	List Price	<b>265,080</b>	239,327	10.8%
	Days on Market	<b>46</b>	42	9.5%
	Percent of Original	<b>98.0%</b>	97.7%	0.3%
Median	List Price	<b>229,900</b>	219,450	4.8%
	Days on Market	<b>20</b>	27	-25.9%
	Percent of Original	<b>100.0%</b>	100.0%	0.0%

A total of 81 listings in Riley County had contracts pending at the end of December, up from 60 contracts pending at the end of December 2022.

Pending contracts reflect listings with a contract in place at the end of the month. In contrast, contracts written measures the number of listings put under contract during the month.

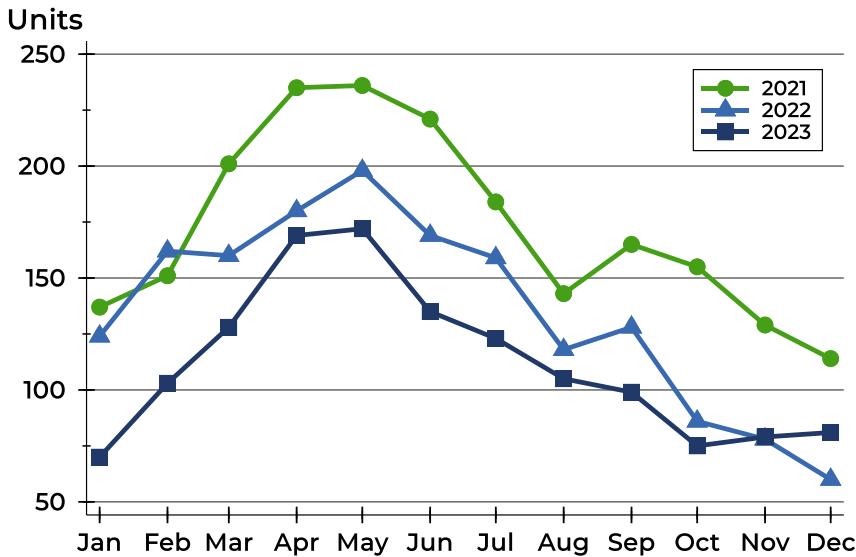
## History of Pending Contracts





## Riley County Pending Contracts Analysis

### Pending Contracts by Month



Month	2021	2022	2023
<b>January</b>	137	124	<b>70</b>
<b>February</b>	151	162	<b>103</b>
<b>March</b>	201	160	<b>128</b>
<b>April</b>	235	180	<b>169</b>
<b>May</b>	236	198	<b>172</b>
<b>June</b>	221	169	<b>135</b>
<b>July</b>	184	159	<b>123</b>
<b>August</b>	143	118	<b>105</b>
<b>September</b>	165	128	<b>99</b>
<b>October</b>	155	86	<b>75</b>
<b>November</b>	129	78	<b>79</b>
<b>December</b>	114	60	<b>81</b>

### Pending Contracts by Price Range

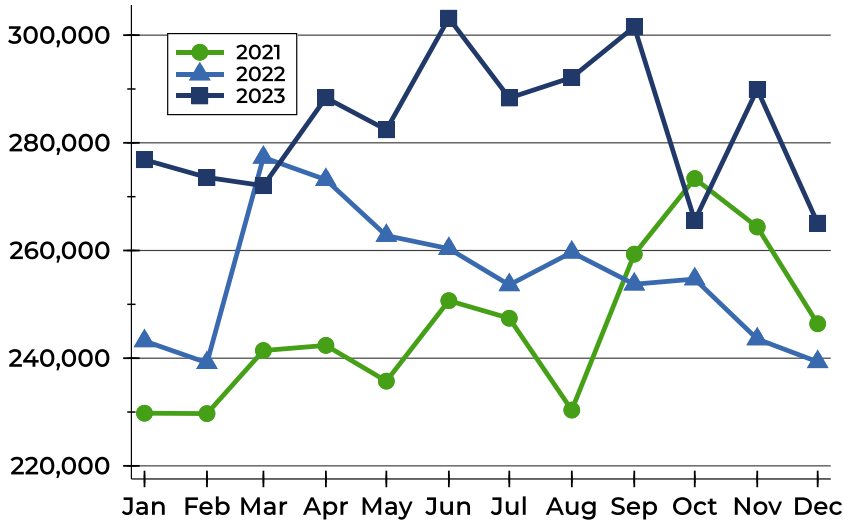
Price Range	Pending Contracts		List Price		Days on Market		Price as % of Orig.	
	Number	Percent	Average	Median	Avg.	Med.	Avg.	Med.
Below \$25,000	0	0.0%	N/A	N/A	N/A	N/A	N/A	N/A
\$25,000-\$49,999	1	1.2%	49,900	49,900	113	113	71.4%	71.4%
\$50,000-\$99,999	1	1.2%	64,900	64,900	132	132	92.8%	92.8%
\$100,000-\$124,999	1	1.2%	112,000	112,000	3	3	100.0%	100.0%
\$125,000-\$149,999	3	3.7%	131,567	130,000	81	115	93.1%	100.0%
\$150,000-\$174,999	7	8.6%	164,286	168,000	42	26	98.3%	100.0%
\$175,000-\$199,999	14	17.3%	185,950	186,250	27	16	99.1%	100.0%
\$200,000-\$249,999	20	24.7%	222,775	220,000	29	14	99.5%	100.0%
\$250,000-\$299,999	10	12.3%	273,290	275,000	9	4	98.8%	100.0%
\$300,000-\$399,999	14	17.3%	345,986	339,250	39	33	96.9%	98.6%
\$400,000-\$499,999	6	7.4%	456,967	457,500	136	68	97.2%	98.9%
\$500,000-\$749,999	4	4.9%	580,677	576,864	126	133	99.8%	100.0%
\$750,000-\$999,999	0	0.0%	N/A	N/A	N/A	N/A	N/A	N/A
\$1,000,000 and up	0	0.0%	N/A	N/A	N/A	N/A	N/A	N/A



## Riley County Pending Contracts Analysis

### Average Price

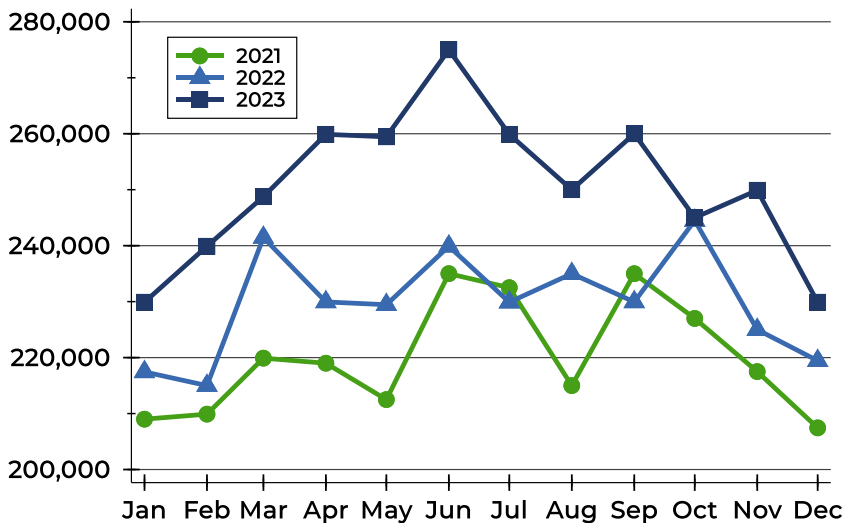
Dollars



Month	2021	2022	2023
January	229,781	243,204	<b>276,864</b>
February	229,712	239,149	<b>273,576</b>
March	241,420	277,287	<b>272,038</b>
April	242,377	273,152	<b>288,375</b>
May	235,738	262,768	<b>282,422</b>
June	250,688	260,348	<b>303,159</b>
July	247,424	253,615	<b>288,326</b>
August	230,364	259,667	<b>292,135</b>
September	259,319	253,740	<b>301,537</b>
October	273,363	254,702	<b>265,571</b>
November	264,377	243,560	<b>289,928</b>
December	246,398	239,327	<b>265,080</b>

### Median Price

Dollars

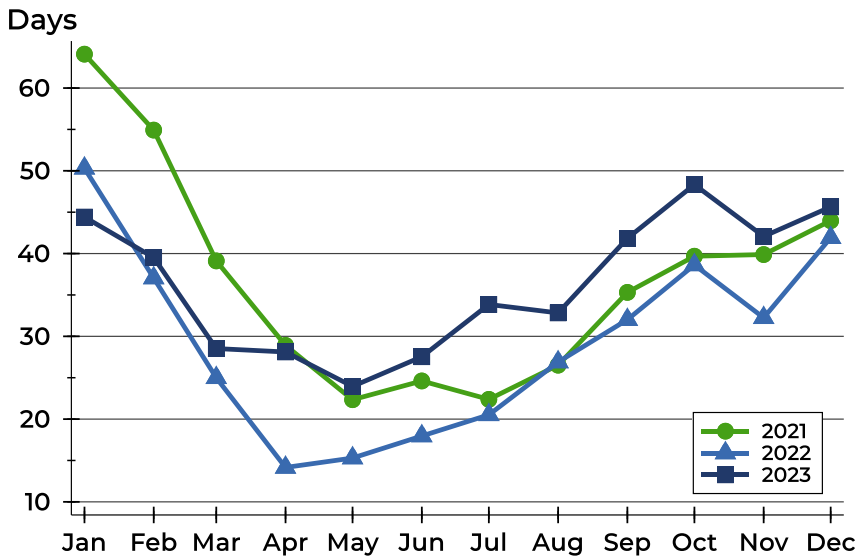


Month	2021	2022	2023
January	209,000	217,450	<b>229,900</b>
February	209,900	215,000	<b>239,900</b>
March	219,900	241,460	<b>248,750</b>
April	219,000	229,950	<b>259,900</b>
May	212,500	229,450	<b>259,450</b>
June	235,000	239,900	<b>275,000</b>
July	232,500	229,900	<b>259,900</b>
August	215,000	235,000	<b>250,000</b>
September	235,000	229,950	<b>260,000</b>
October	227,000	244,500	<b>245,000</b>
November	217,500	225,000	<b>249,900</b>
December	207,450	219,450	<b>229,900</b>



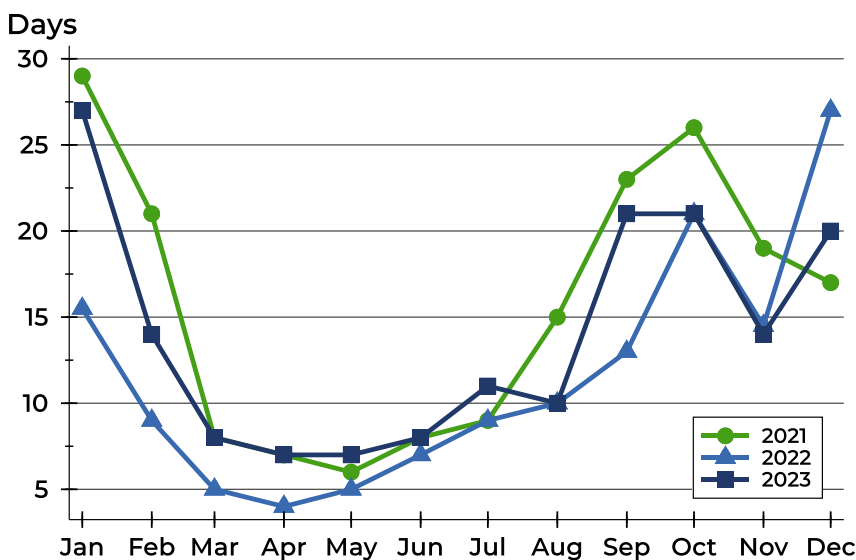
## Riley County Pending Contracts Analysis

### Average DOM



Month	2021	2022	2023
January	64	50	44
February	55	37	40
March	39	25	29
April	29	14	28
May	22	15	24
June	25	18	28
July	22	21	34
August	27	27	33
September	35	32	42
October	40	39	48
November	40	32	42
December	44	42	46

### Median DOM



Month	2021	2022	2023
January	29	16	27
February	21	9	14
March	8	5	8
April	7	4	7
May	6	5	7
June	8	7	8
July	9	9	11
August	15	10	10
September	23	13	21
October	26	21	21
November	19	15	14
December	17	27	20