



**February
2023**

Flint Hills MLS Statistics



**FLINT HILLS
ASSOCIATION
OF REALTORS®**

Riley County Housing Report



Market Overview

Riley County Home Sales Fell in February

Total home sales in Riley County fell last month to 25 units, compared to 57 units in February 2022. Total sales volume was \$6.7 million, down from a year earlier.

The median sale price in February was \$229,900, up from \$207,500 a year earlier. Homes that sold in February were typically on the market for 27 days and sold for 100.0% of their list prices.

Riley County Active Listings Up at End of February

The total number of active listings in Riley County at the end of February was 115 units, up from 104 at the same point in 2022. This represents a 1.5 months' supply of homes available for sale. The median list price of homes on the market at the end of February was \$282,900.

During February, a total of 58 contracts were written down from 99 in February 2022. At the end of the month, there were 103 contracts still pending.

Report Contents

- Summary Statistics – Page 2
- Closed Listing Analysis – Page 3
- Active Listings Analysis – Page 7
- Months' Supply Analysis – Page 11
- New Listings Analysis – Page 12
- Contracts Written Analysis – Page 15
- Pending Contracts Analysis – Page 19

Contact Information

Margaret Pendleton, Association Executive
 Flint Hills Association of REALTORS®
 205 S. Seth Child Road
 Manhattan, KS 66502
 785-776-1203
ae@flinthillsrealtors.net
www.flinthillsrealtors.net



Riley County Summary Statistics

February MLS Statistics Three-year History		Current Month			Year-to-Date		
		2023	2022	2021	2023	2022	2021
Home Sales		25	57	65	54	118	116
Change from prior year		-56.1%	-12.3%	27.5%	-54.2%	1.7%	18.4%
Active Listings		115	104	150	N/A	N/A	N/A
Change from prior year		10.6%	-30.7%	-52.5%			
Months' Supply		1.5	1.1	1.9	N/A	N/A	N/A
Change from prior year		36.4%	-42.1%	-59.6%			
New Listings		64	104	74	112	182	165
Change from prior year		-38.5%	40.5%	-42.6%	-38.5%	10.3%	-29.2%
Contracts Written		58	99	78	103	177	171
Change from prior year		-41.4%	26.9%	-12.4%	-41.8%	3.5%	17.1%
Pending Contracts		103	162	151	N/A	N/A	N/A
Change from prior year		-36.4%	7.3%	7.1%			
Sales Volume (1,000s)		6,651	13,379	14,931	13,163	27,158	25,458
Change from prior year		-50.3%	-10.4%	59.3%	-51.5%	6.7%	32.9%
Average	Sale Price	266,052	234,723	229,715	243,764	230,149	219,465
	Change from prior year	13.3%	2.2%	25.0%	5.9%	4.9%	12.3%
	List Price of Actives	337,680	315,098	269,299	N/A	N/A	N/A
	Change from prior year	7.2%	17.0%	8.9%			
	Days on Market	34	28	54	37	40	52
Change from prior year	21.4%	-48.1%	-22.9%	-7.5%	-23.1%	-30.7%	
	Percent of List	99.1%	98.8%	97.2%	98.1%	98.5%	97.2%
Change from prior year	0.3%	1.6%	-0.8%	-0.4%	1.3%	-1.0%	
	Percent of Original	98.3%	97.4%	95.6%	96.7%	96.2%	95.7%
Change from prior year	0.9%	1.9%	-0.5%	0.5%	0.5%	0.4%	
Median	Sale Price	229,900	207,500	205,000	217,250	200,000	198,500
	Change from prior year	10.8%	1.2%	25.5%	8.6%	0.8%	11.5%
	List Price of Actives	282,900	267,000	210,000	N/A	N/A	N/A
	Change from prior year	6.0%	27.1%	5.5%			
	Days on Market	27	10	29	25	16	29
Change from prior year	170.0%	-65.5%	-49.1%	56.3%	-44.8%	-50.0%	
	Percent of List	100.0%	100.0%	98.5%	98.8%	100.0%	98.5%
Change from prior year	0.0%	1.5%	-0.2%	-1.2%	1.5%	-0.1%	
	Percent of Original	98.5%	100.0%	96.8%	97.6%	99.2%	97.9%
Change from prior year	-1.5%	3.3%	-0.3%	-1.6%	1.3%	0.8%	

Note: Year-to-date statistics cannot be calculated for Active Listings, Months' Supply and Pending Contracts.



Riley County Closed Listings Analysis

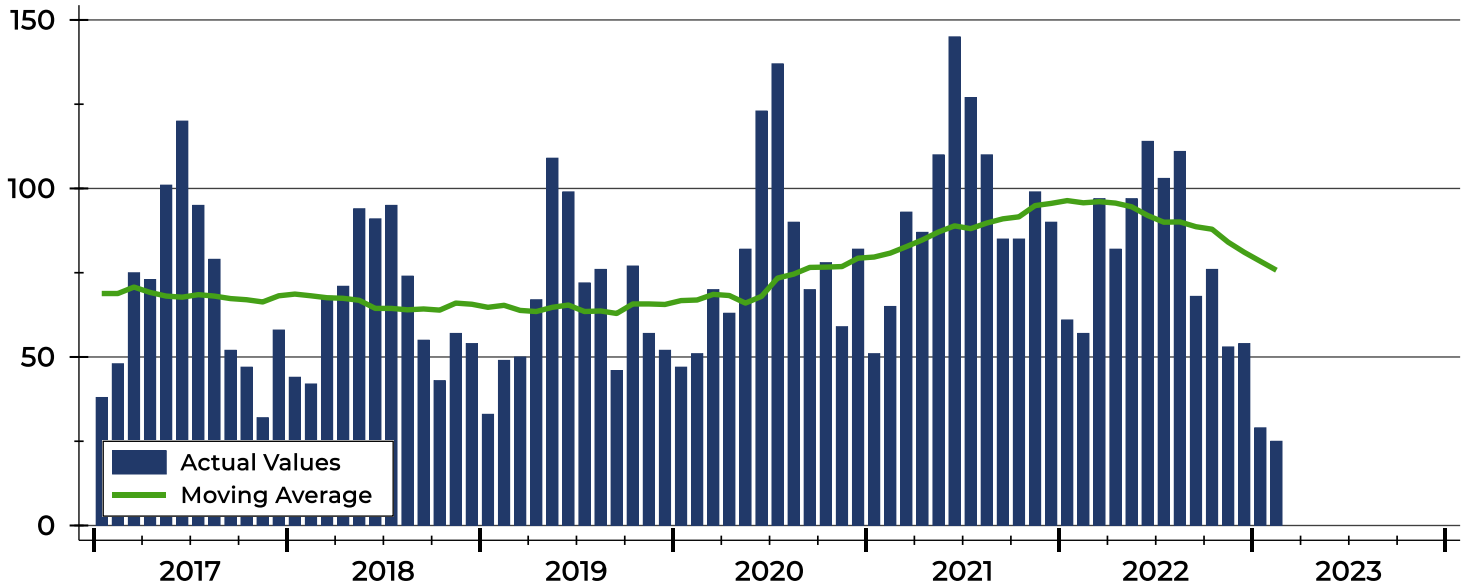
Summary Statistics for Closed Listings		2023	February 2022	Change	2023	Year-to-Date 2022	Change
Closed Listings		25	57	-56.1%	54	118	-54.2%
Volume (1,000s)		6,651	13,379	-50.3%	13,163	27,158	-51.5%
Months' Supply		1.5	1.1	36.4%	N/A	N/A	N/A
Average	Sale Price	266,052	234,723	13.3%	243,764	230,149	5.9%
	Days on Market	34	28	21.4%	37	40	-7.5%
	Percent of List	99.1%	98.8%	0.3%	98.1%	98.5%	-0.4%
	Percent of Original	98.3%	97.4%	0.9%	96.7%	96.2%	0.5%
Median	Sale Price	229,900	207,500	10.8%	217,250	200,000	8.6%
	Days on Market	27	10	170.0%	25	16	56.3%
	Percent of List	100.0%	100.0%	0.0%	98.8%	100.0%	-1.2%
	Percent of Original	98.5%	100.0%	-1.5%	97.6%	99.2%	-1.6%

A total of 25 homes sold in Riley County in February, down from 57 units in February 2022. Total sales volume fell to \$6.7 million compared to \$13.4 million in the previous year.

The median sales price in February was \$229,900, up 10.8% compared to the prior year. Median days on market was 27 days, up from 24 days in January, and up from 10 in February 2022.

History of Closed Listings

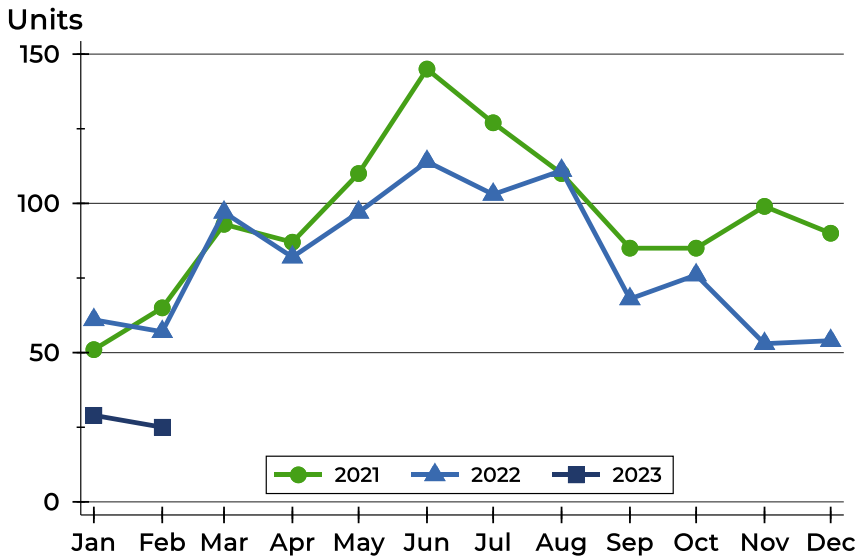
Units





Riley County Closed Listings Analysis

Closed Listings by Month



Month	2021	2022	2023
January	51	61	29
February	65	57	25
March	93	97	
April	87	82	
May	110	97	
June	145	114	
July	127	103	
August	110	111	
September	85	68	
October	85	76	
November	99	53	
December	90	54	

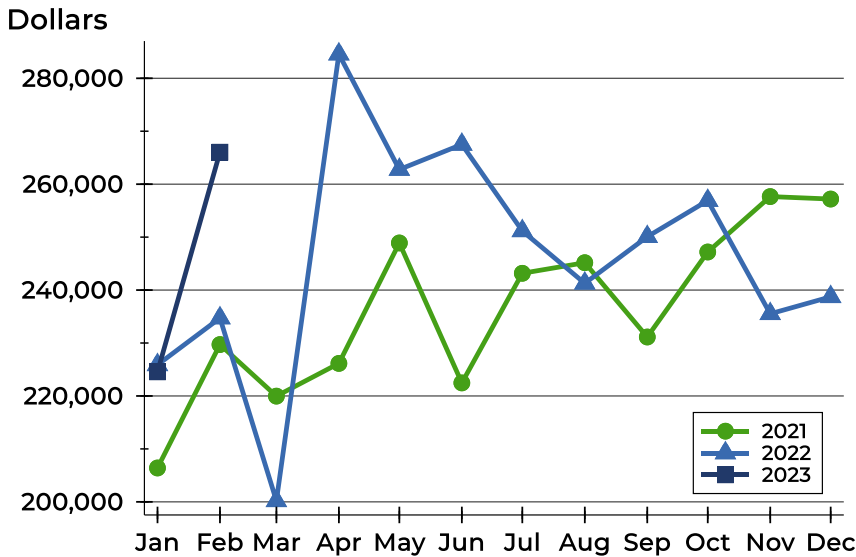
Closed Listings by Price Range

Price Range	Sales		Months' Supply	Sale Price		Days on Market		Price as % of List		Price as % of Orig.	
	Number	Percent		Average	Median	Avg.	Med.	Avg.	Med.	Avg.	Med.
Below \$25,000	0	0.0%	N/A	N/A	N/A	N/A	N/A	N/A	N/A	N/A	N/A
\$25,000-\$49,999	0	0.0%	N/A	N/A	N/A	N/A	N/A	N/A	N/A	N/A	N/A
\$50,000-\$99,999	0	0.0%	N/A	N/A	N/A	N/A	N/A	N/A	N/A	N/A	N/A
\$100,000-\$124,999	3	12.0%	1.8	109,000	109,000	32	27	97.0%	97.3%	94.1%	94.8%
\$125,000-\$149,999	1	4.0%	1.9	130,000	130,000	13	13	100.0%	100.0%	100.0%	100.0%
\$150,000-\$174,999	3	12.0%	0.6	156,667	155,000	53	40	98.6%	100.0%	98.6%	100.0%
\$175,000-\$199,999	2	8.0%	0.9	187,750	187,750	20	20	96.2%	96.2%	96.2%	96.2%
\$200,000-\$249,999	7	28.0%	1.1	226,700	229,900	13	7	100.7%	100.0%	100.3%	100.0%
\$250,000-\$299,999	2	8.0%	0.9	250,000	250,000	23	23	100.0%	100.0%	100.0%	100.0%
\$300,000-\$399,999	2	8.0%	1.4	321,450	321,450	68	68	98.9%	98.9%	96.6%	96.6%
\$400,000-\$499,999	2	8.0%	4.4	457,500	457,500	61	61	97.1%	97.1%	97.1%	97.1%
\$500,000-\$749,999	3	12.0%	4.7	568,000	580,000	49	27	100.3%	100.0%	98.7%	100.0%
\$750,000-\$999,999	0	0.0%	N/A	N/A	N/A	N/A	N/A	N/A	N/A	N/A	N/A
\$1,000,000 and up	0	0.0%	N/A	N/A	N/A	N/A	N/A	N/A	N/A	N/A	N/A



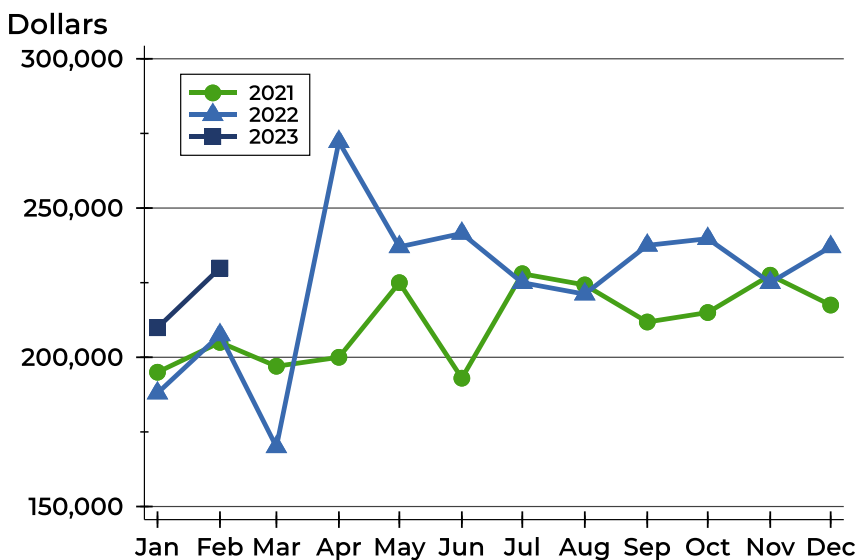
Riley County Closed Listings Analysis

Average Price



Month	2021	2022	2023
January	206,402	225,875	224,550
February	229,715	234,723	266,052
March	219,973	200,196	
April	226,152	284,561	
May	248,898	262,771	
June	222,470	267,511	
July	243,175	251,180	
August	245,172	241,275	
September	231,140	250,074	
October	247,194	256,903	
November	257,661	235,522	
December	257,195	238,726	

Median Price

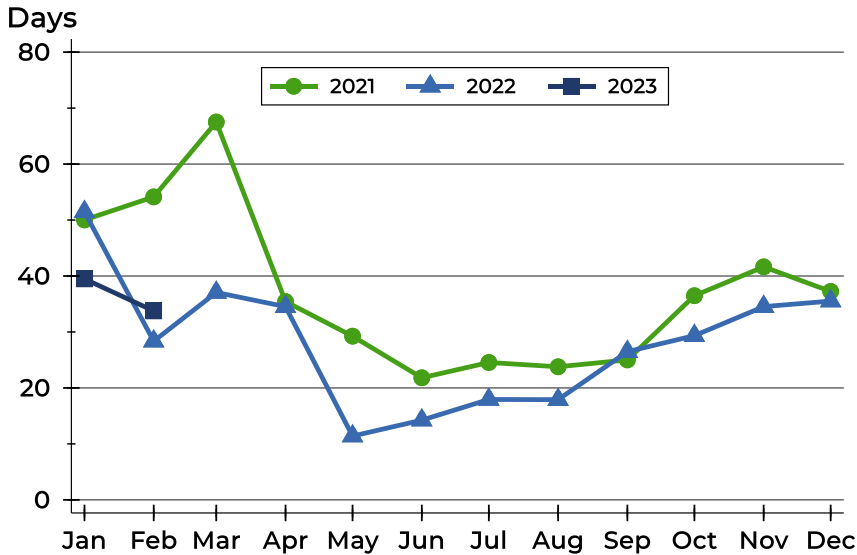


Month	2021	2022	2023
January	195,000	188,000	209,900
February	205,000	207,500	229,900
March	197,000	170,000	
April	200,000	272,250	
May	225,000	237,000	
June	193,000	241,500	
July	228,000	225,000	
August	224,250	221,159	
September	211,819	237,500	
October	215,000	239,750	
November	227,500	225,000	
December	217,500	237,000	



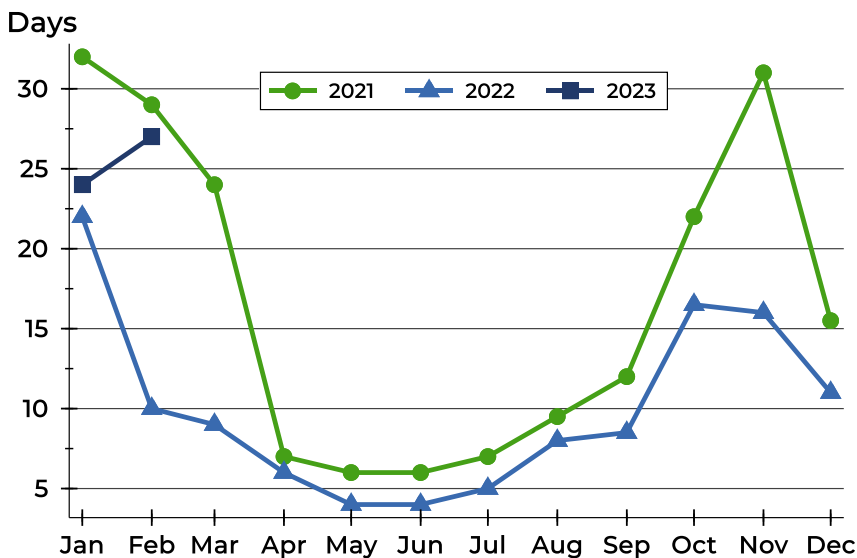
Riley County Closed Listings Analysis

Average DOM



Month	2021	2022	2023
January	50	51	39
February	54	28	34
March	68	37	
April	35	35	
May	29	11	
June	22	14	
July	25	18	
August	24	18	
September	25	26	
October	36	29	
November	42	35	
December	37	36	

Median DOM



Month	2021	2022	2023
January	32	22	24
February	29	10	27
March	24	9	
April	7	6	
May	6	4	
June	6	4	
July	7	5	
August	10	8	
September	12	9	
October	22	17	
November	31	16	
December	16	11	



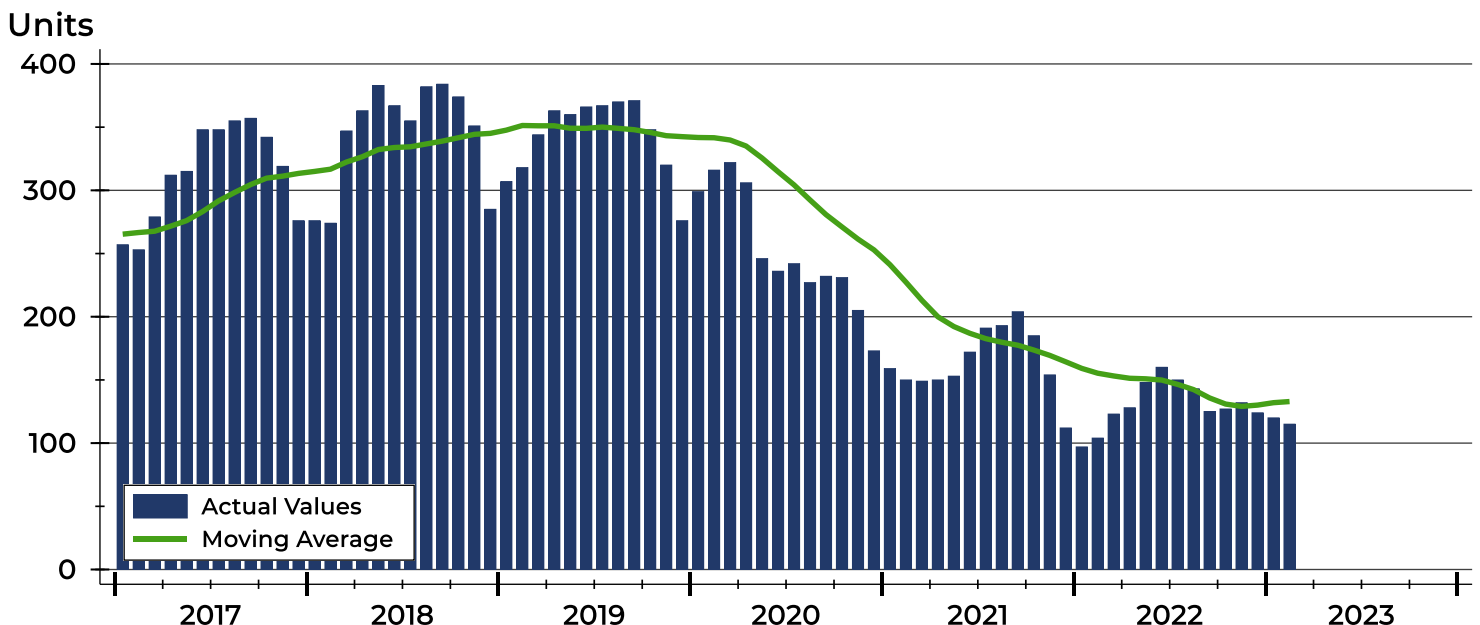
Riley County Active Listings Analysis

Summary Statistics for Active Listings		End of February		
		2023	2022	Change
Active Listings		115	104	10.6%
Volume (1,000s)		38,833	32,770	18.5%
Months' Supply		1.5	1.1	36.4%
Average	List Price	337,680	315,098	7.2%
	Days on Market	85	77	10.4%
	Percent of Original	98.1%	98.8%	-0.7%
Median	List Price	282,900	267,000	6.0%
	Days on Market	59	46	28.3%
	Percent of Original	100.0%	100.0%	0.0%

A total of 115 homes were available for sale in Riley County at the end of February. This represents a 1.5 months' supply of active listings.

The median list price of homes on the market at the end of February was \$282,900, up 6.0% from 2022. The typical time on market for active listings was 59 days, up from 46 days a year earlier.

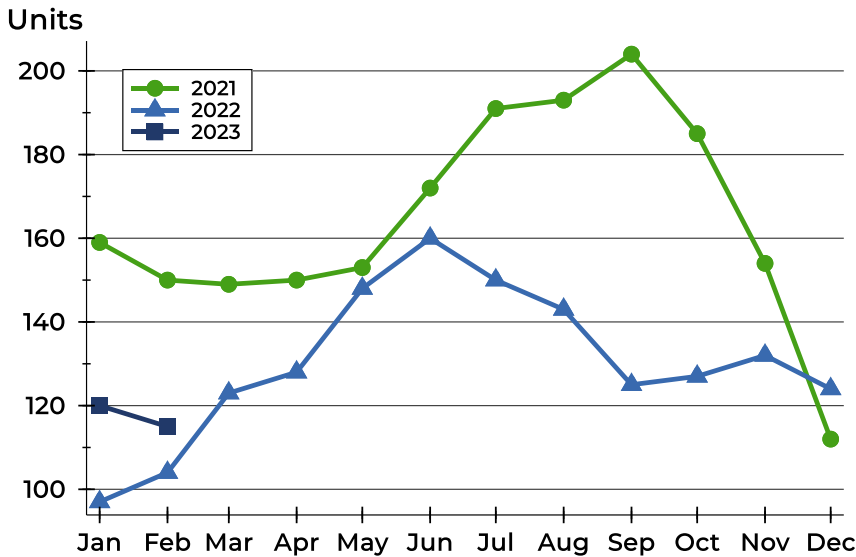
History of Active Listings





Riley County Active Listings Analysis

Active Listings by Month



Month	2021	2022	2023
January	159	97	120
February	150	104	115
March	149	123	
April	150	128	
May	153	148	
June	172	160	
July	191	150	
August	193	143	
September	204	125	
October	185	127	
November	154	132	
December	112	124	

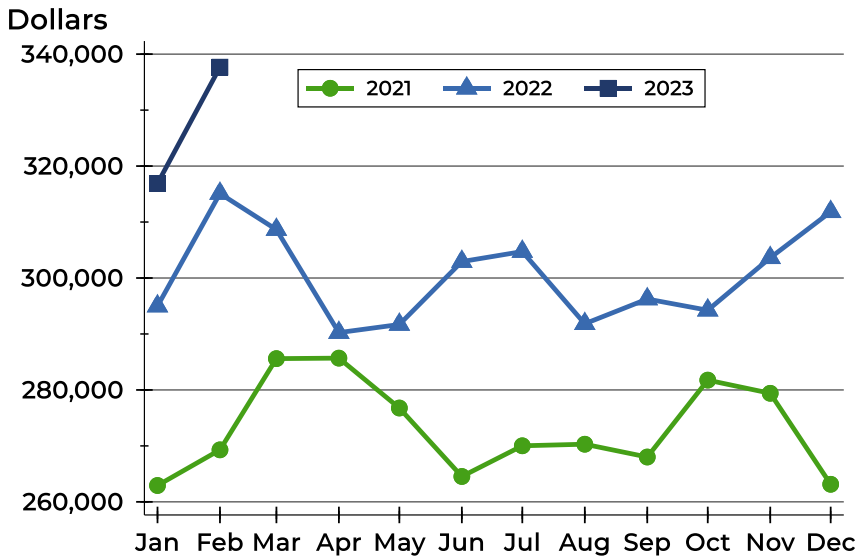
Active Listings by Price Range

Price Range	Active Listings		Months' Supply	List Price		Days on Market		Price as % of Orig.	
	Number	Percent		Average	Median	Avg.	Med.	Avg.	Med.
Below \$25,000	0	0.0%	N/A	N/A	N/A	N/A	N/A	N/A	N/A
\$25,000-\$49,999	0	0.0%	N/A	N/A	N/A	N/A	N/A	N/A	N/A
\$50,000-\$99,999	5	4.3%	N/A	81,360	92,500	64	33	97.4%	100.0%
\$100,000-\$124,999	8	7.0%	1.8	114,350	115,000	38	26	94.7%	100.0%
\$125,000-\$149,999	8	7.0%	1.9	139,513	139,000	53	46	99.8%	100.0%
\$150,000-\$174,999	6	5.2%	0.6	168,150	170,500	63	85	98.7%	99.0%
\$175,000-\$199,999	7	6.1%	0.9	184,000	185,000	106	41	98.9%	100.0%
\$200,000-\$249,999	16	13.9%	1.1	224,463	217,500	84	88	97.4%	100.0%
\$250,000-\$299,999	11	9.6%	0.9	277,300	279,900	45	15	98.3%	100.0%
\$300,000-\$399,999	19	16.5%	1.4	353,234	360,000	121	75	97.2%	100.0%
\$400,000-\$499,999	18	15.7%	4.4	457,924	455,112	96	58	99.4%	100.0%
\$500,000-\$749,999	11	9.6%	4.7	603,626	625,000	77	76	99.7%	100.0%
\$750,000-\$999,999	4	3.5%	N/A	865,725	871,450	151	86	94.5%	99.0%
\$1,000,000 and up	2	1.7%	N/A	1,200,000	1,200,000	153	153	100.0%	100.0%



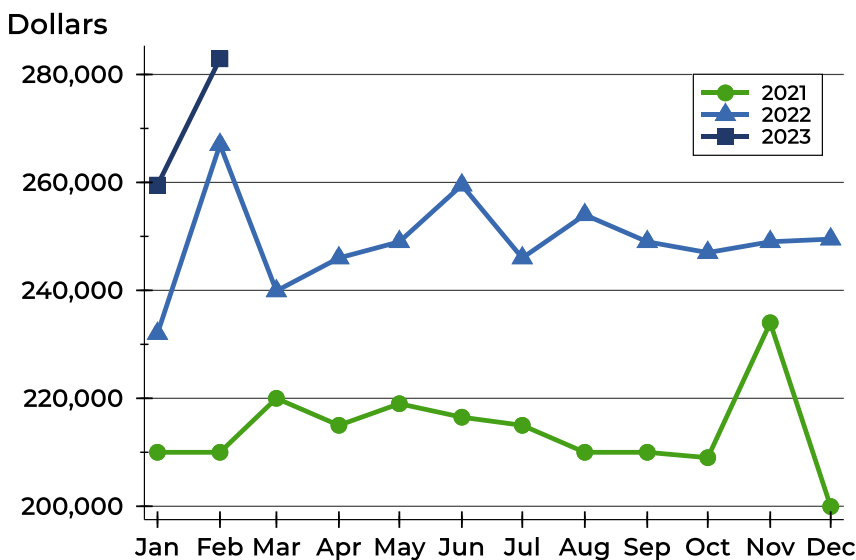
Riley County Active Listings Analysis

Average Price



Month	2021	2022	2023
January	262,929	294,980	316,889
February	269,299	315,098	337,680
March	285,597	308,649	
April	285,687	290,244	
May	276,770	291,693	
June	264,539	302,934	
July	270,021	304,729	
August	270,304	291,827	
September	268,017	296,245	
October	281,756	294,245	
November	279,402	303,615	
December	263,144	311,834	

Median Price

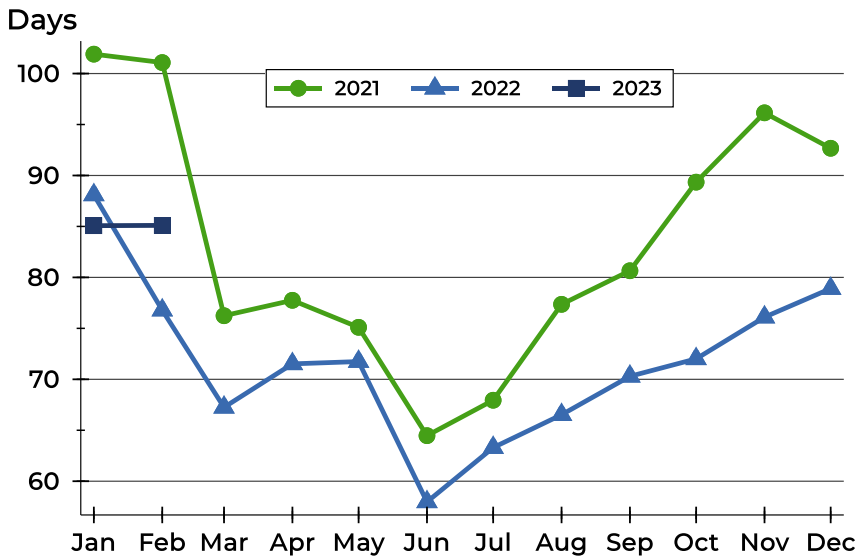


Month	2021	2022	2023
January	210,000	232,000	259,500
February	210,000	267,000	282,900
March	220,000	239,900	
April	215,000	246,000	
May	219,000	249,000	
June	216,500	259,500	
July	215,000	246,000	
August	210,000	254,000	
September	210,000	249,000	
October	209,000	247,000	
November	234,000	249,000	
December	199,950	249,500	



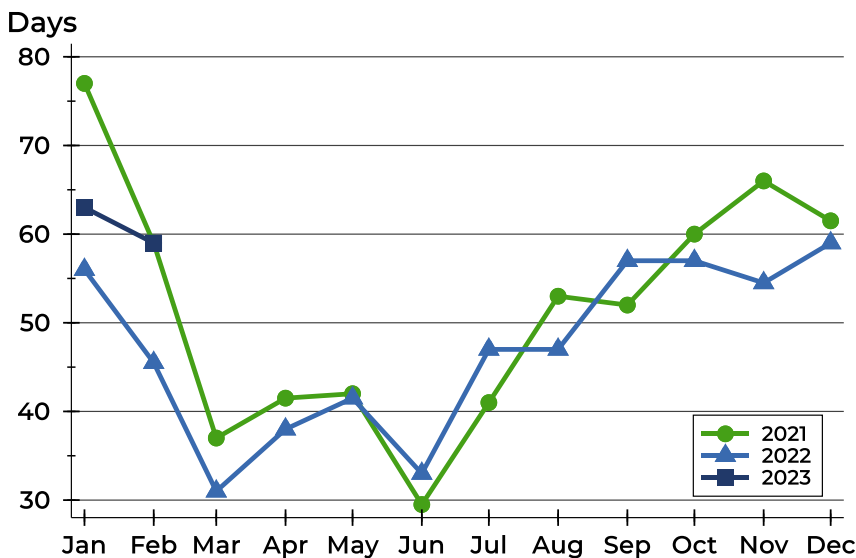
Riley County Active Listings Analysis

Average DOM



Month	2021	2022	2023
January	102	88	85
February	101	77	85
March	76	67	
April	78	72	
May	75	72	
June	64	58	
July	68	63	
August	77	67	
September	81	70	
October	89	72	
November	96	76	
December	93	79	

Median DOM

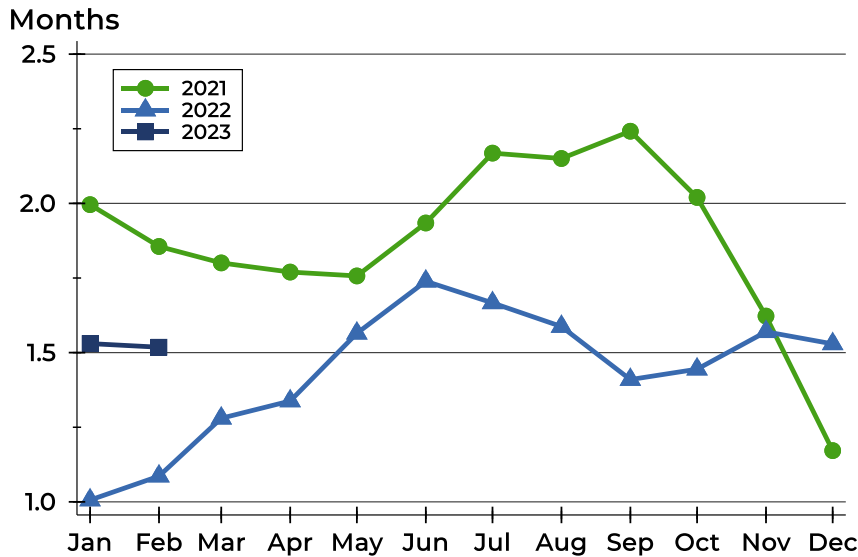


Month	2021	2022	2023
January	77	56	63
February	59	46	59
March	37	31	
April	42	38	
May	42	42	
June	30	33	
July	41	47	
August	53	47	
September	52	57	
October	60	57	
November	66	55	
December	62	59	



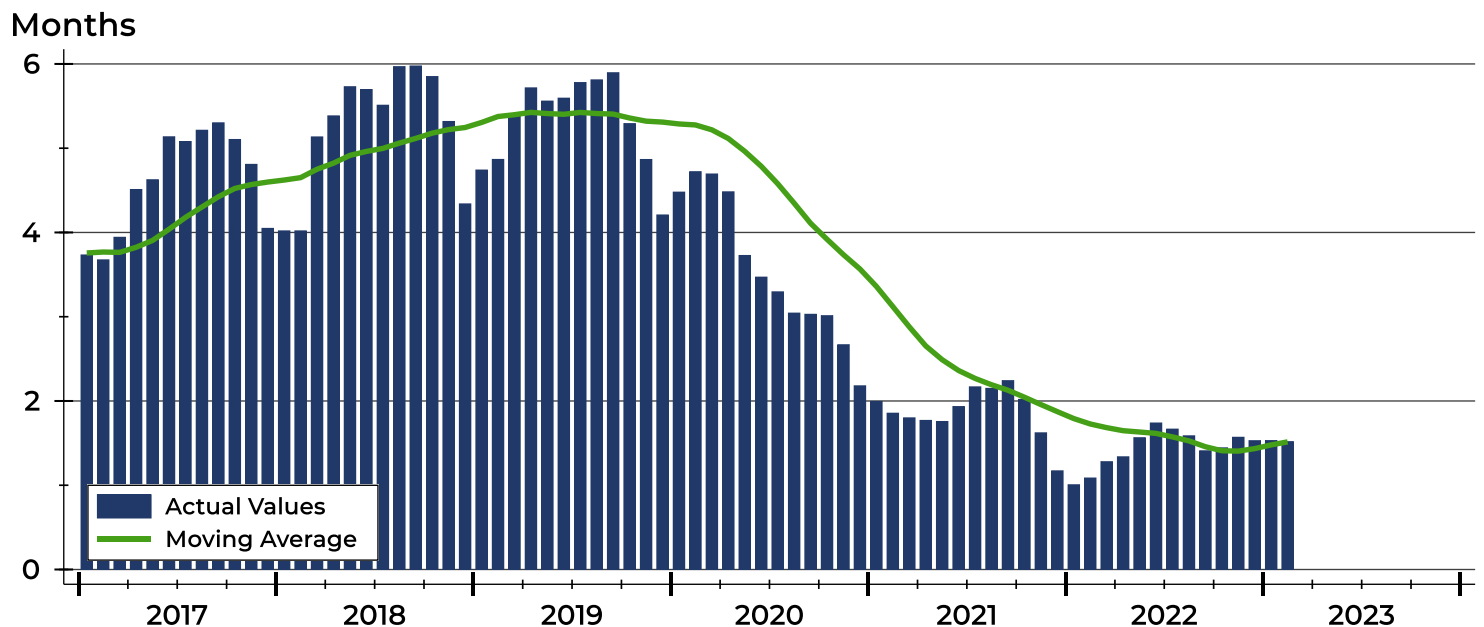
Riley County Months' Supply Analysis

Months' Supply by Month



Month	2021	2022	2023
January	2.0	1.0	1.5
February	1.9	1.1	1.5
March	1.8	1.3	
April	1.8	1.3	
May	1.8	1.6	
June	1.9	1.7	
July	2.2	1.7	
August	2.2	1.6	
September	2.2	1.4	
October	2.0	1.4	
November	1.6	1.6	
December	1.2	1.5	

History of Month's Supply





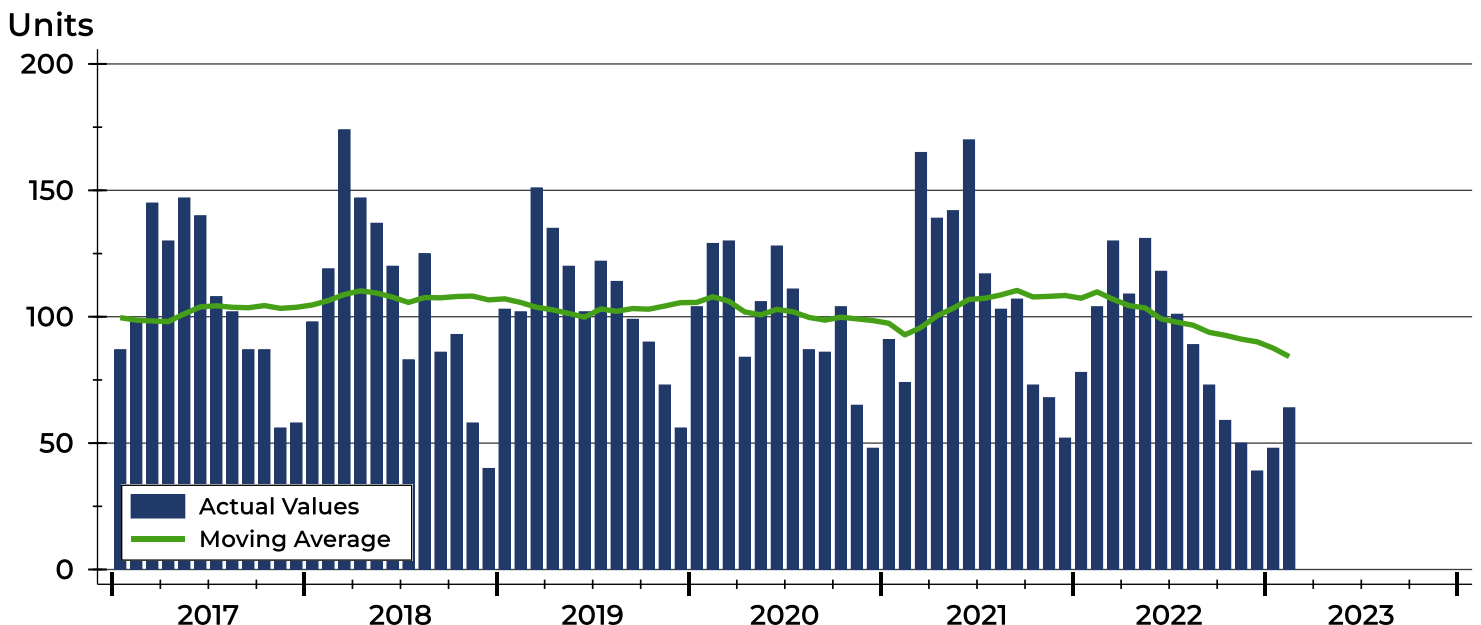
Riley County New Listings Analysis

Summary Statistics for New Listings		2023	February 2022	Change
Current Month	New Listings	64	104	-38.5%
	Volume (1,000s)	19,320	25,929	-25.5%
	Average List Price	301,875	249,317	21.1%
	Median List Price	277,450	235,000	18.1%
Year-to-Date	New Listings	112	182	-38.5%
	Volume (1,000s)	33,340	47,332	-29.6%
	Average List Price	297,677	260,066	14.5%
	Median List Price	265,000	233,000	13.7%

A total of 64 new listings were added in Riley County during February, down 38.5% from the same month in 2022. Year-to-date Riley County has seen 112 new listings.

The median list price of these homes was \$277,450 up from \$235,000 in 2022.

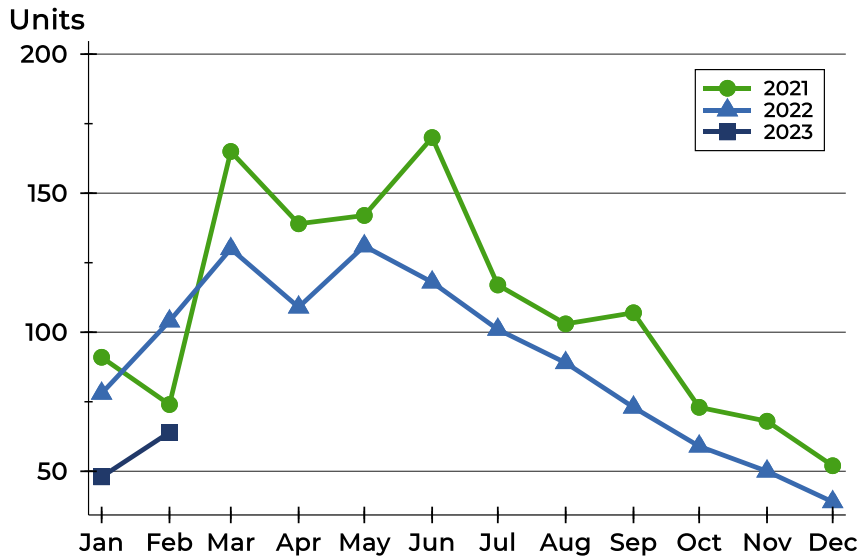
History of New Listings





Riley County New Listings Analysis

New Listings by Month



Month	2021	2022	2023
January	91	78	48
February	74	104	64
March	165	130	
April	139	109	
May	142	131	
June	170	118	
July	117	101	
August	103	89	
September	107	73	
October	73	59	
November	68	50	
December	52	39	

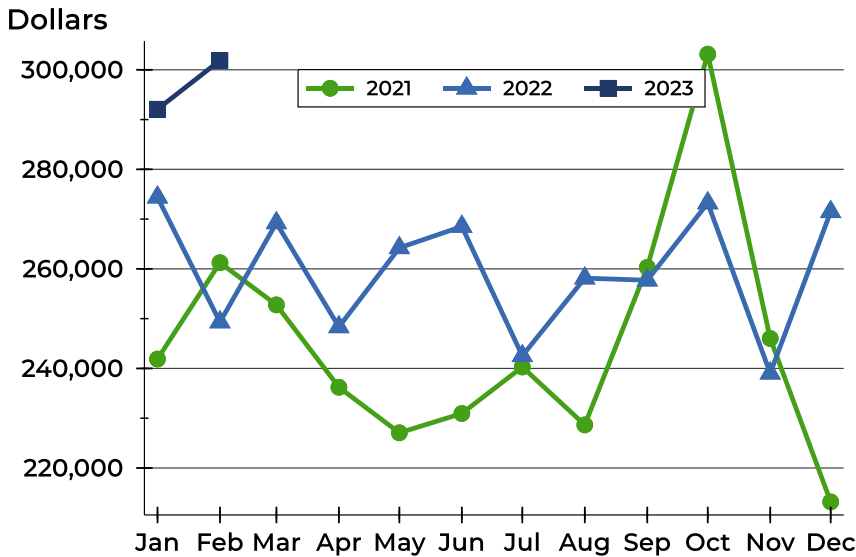
New Listings by Price Range

Price Range	New Listings		List Price		Days on Market		Price as % of Orig.	
	Number	Percent	Average	Median	Avg.	Med.	Avg.	Med.
Below \$25,000	0	0.0%	N/A	N/A	N/A	N/A	N/A	N/A
\$25,000-\$49,999	0	0.0%	N/A	N/A	N/A	N/A	N/A	N/A
\$50,000-\$99,999	1	1.6%	59,900	59,900	26	26	100.0%	100.0%
\$100,000-\$124,999	1	1.6%	115,000	115,000	22	22	100.0%	100.0%
\$125,000-\$149,999	5	7.8%	143,500	145,000	12	12	100.0%	100.0%
\$150,000-\$174,999	4	6.3%	171,075	169,950	4	3	100.3%	100.0%
\$175,000-\$199,999	7	10.9%	187,093	185,000	8	7	100.0%	100.0%
\$200,000-\$249,999	11	17.2%	224,577	220,000	6	5	99.3%	100.0%
\$250,000-\$299,999	12	18.8%	284,558	285,000	4	3	100.0%	100.0%
\$300,000-\$399,999	12	18.8%	341,942	332,250	7	4	99.7%	100.0%
\$400,000-\$499,999	6	9.4%	439,400	444,500	14	13	100.0%	100.0%
\$500,000-\$749,999	2	3.1%	537,000	537,000	10	10	100.0%	100.0%
\$750,000-\$999,999	2	3.1%	767,450	767,450	23	23	100.0%	100.0%
\$1,000,000 and up	1	1.6%	1,200,000	1,200,000	16	16	100.0%	100.0%



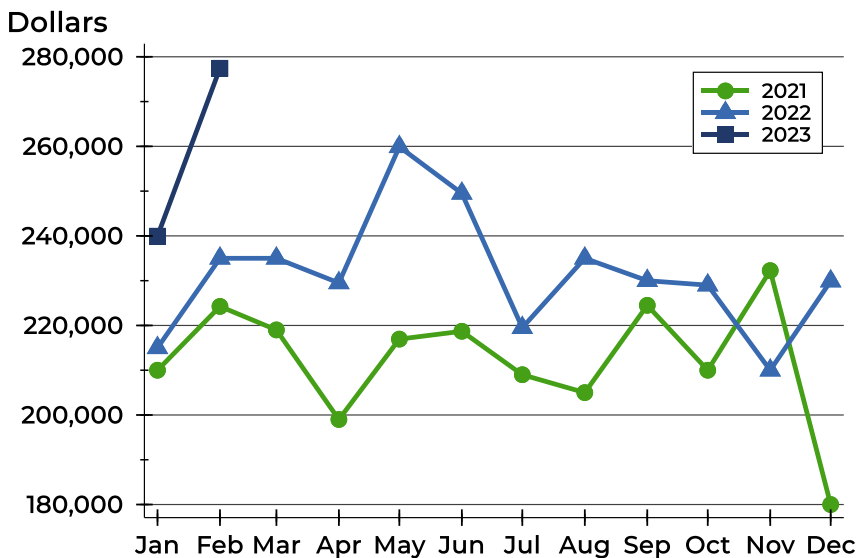
Riley County New Listings Analysis

Average Price



Month	2021	2022	2023
January	241,888	274,397	292,079
February	261,254	249,317	301,875
March	252,772	269,234	
April	236,225	248,339	
May	227,067	264,226	
June	230,952	268,512	
July	240,298	242,536	
August	228,658	258,135	
September	260,308	257,727	
October	303,145	273,224	
November	246,026	239,035	
December	213,190	271,471	

Median Price



Month	2021	2022	2023
January	210,000	215,000	239,950
February	224,250	235,000	277,450
March	219,000	235,000	
April	199,000	229,500	
May	216,950	259,900	
June	218,700	249,500	
July	209,000	219,500	
August	205,000	235,000	
September	224,500	230,000	
October	209,999	229,000	
November	232,250	210,000	
December	180,000	229,900	



Riley County Contracts Written Analysis

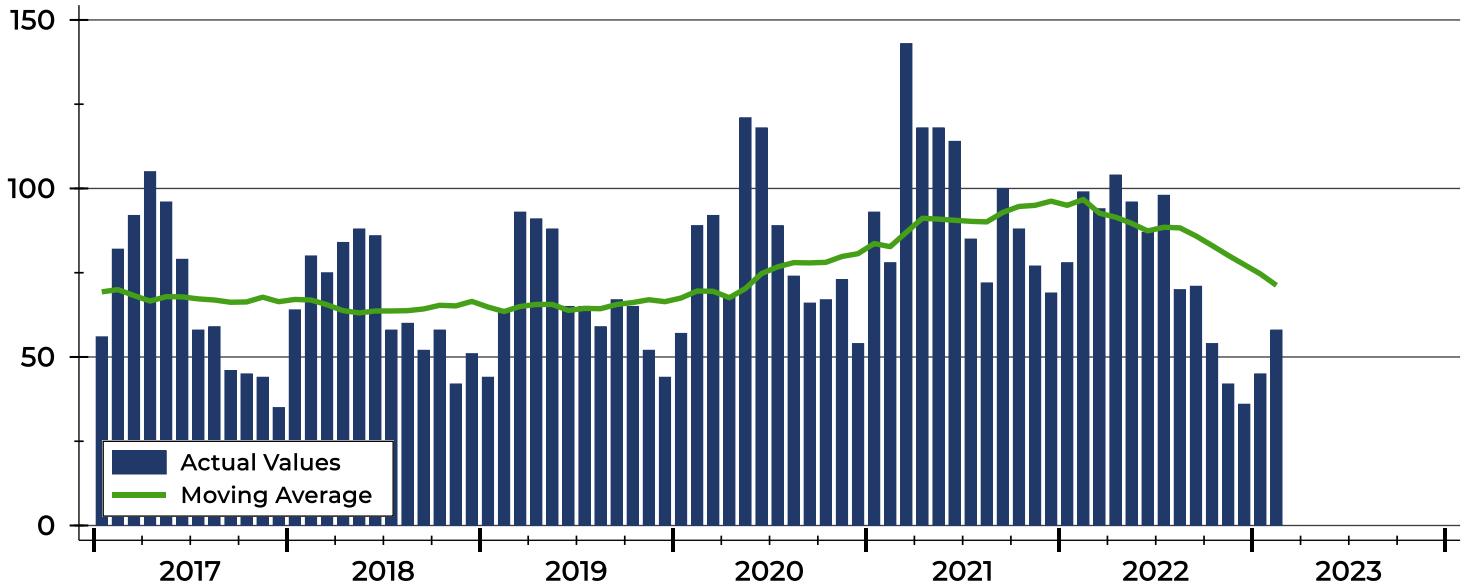
Summary Statistics for Contracts Written		2023	February 2022	Change	2023	Year-to-Date 2022	Change
Contracts Written		58	99	-41.4%	103	177	-41.8%
Volume (1,000s)		15,640	22,532	-30.6%	27,968	40,369	-30.7%
Average	Sale Price	269,647	227,600	18.5%	271,530	228,071	19.1%
	Days on Market	30	24	25.0%	33	35	-5.7%
	Percent of Original	98.7%	100.3%	-1.6%	98.1%	99.2%	-1.1%
Median	Sale Price	244,200	195,000	25.2%	235,000	200,000	17.5%
	Days on Market	7	8	-12.5%	10	9	11.1%
	Percent of Original	100.0%	100.0%	0.0%	100.0%	100.0%	0.0%

A total of 58 contracts for sale were written in Riley County during the month of February, down from 99 in 2022. The median list price of these homes was \$244,200, up from \$195,000 the prior year.

Half of the homes that went under contract in February were on the market less than 7 days, compared to 8 days in February 2022.

History of Contracts Written

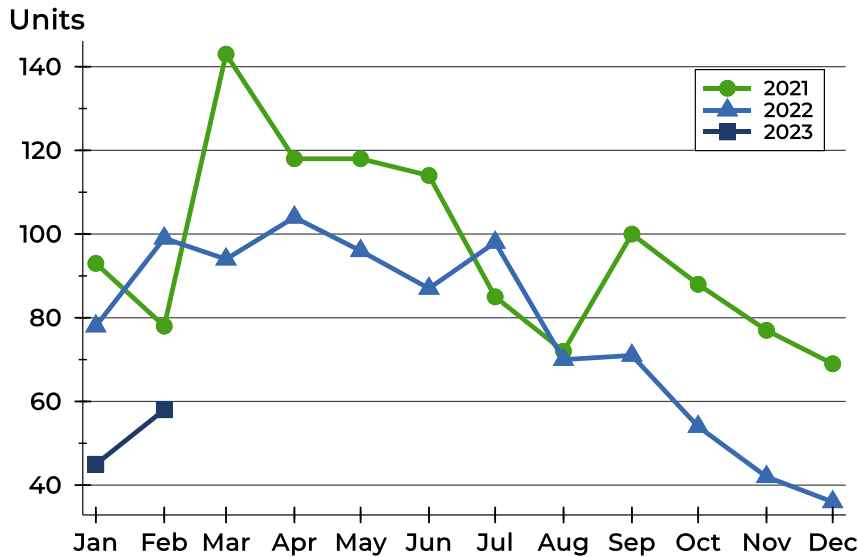
Units





Riley County Contracts Written Analysis

Contracts Written by Month



Month	2021	2022	2023
January	93	78	45
February	78	99	58
March	143	94	
April	118	104	
May	118	96	
June	114	87	
July	85	98	
August	72	70	
September	100	71	
October	88	54	
November	77	42	
December	69	36	

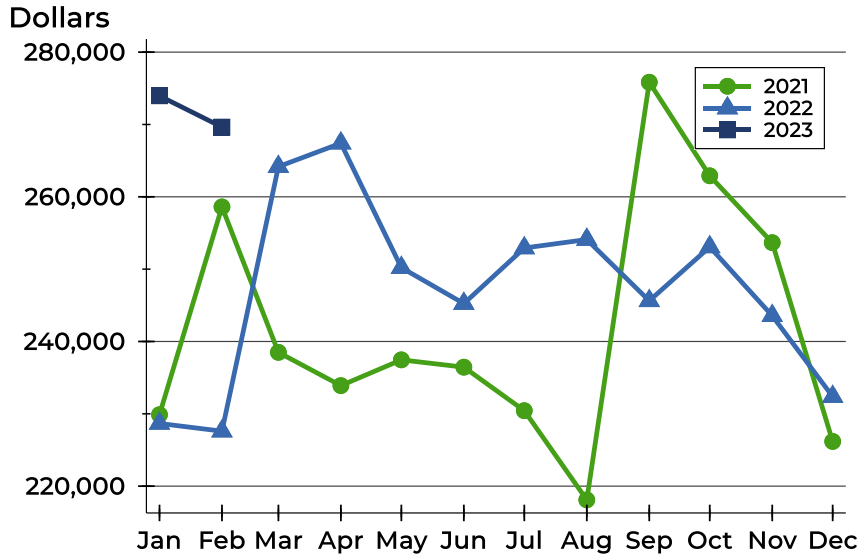
Contracts Written by Price Range

Price Range	Contracts Written		List Price		Days on Market		Price as % of Orig.	
	Number	Percent	Average	Median	Avg.	Med.	Avg.	Med.
Below \$25,000	0	0.0%	N/A	N/A	N/A	N/A	N/A	N/A
\$25,000-\$49,999	0	0.0%	N/A	N/A	N/A	N/A	N/A	N/A
\$50,000-\$99,999	0	0.0%	N/A	N/A	N/A	N/A	N/A	N/A
\$100,000-\$124,999	0	0.0%	N/A	N/A	N/A	N/A	N/A	N/A
\$125,000-\$149,999	5	8.6%	140,480	140,000	50	41	96.2%	100.0%
\$150,000-\$174,999	8	13.8%	166,025	167,250	29	11	99.3%	100.0%
\$175,000-\$199,999	7	12.1%	189,621	190,000	46	6	94.7%	100.0%
\$200,000-\$249,999	12	20.7%	234,496	233,950	22	17	99.0%	100.0%
\$250,000-\$299,999	9	15.5%	285,533	285,000	4	3	100.0%	100.0%
\$300,000-\$399,999	10	17.2%	331,235	330,000	29	3	100.0%	100.0%
\$400,000-\$499,999	5	8.6%	436,100	440,000	35	17	99.6%	100.0%
\$500,000-\$749,999	1	1.7%	550,000	550,000	31	31	100.0%	100.0%
\$750,000-\$999,999	1	1.7%	855,000	855,000	113	113	100.0%	100.0%
\$1,000,000 and up	0	0.0%	N/A	N/A	N/A	N/A	N/A	N/A



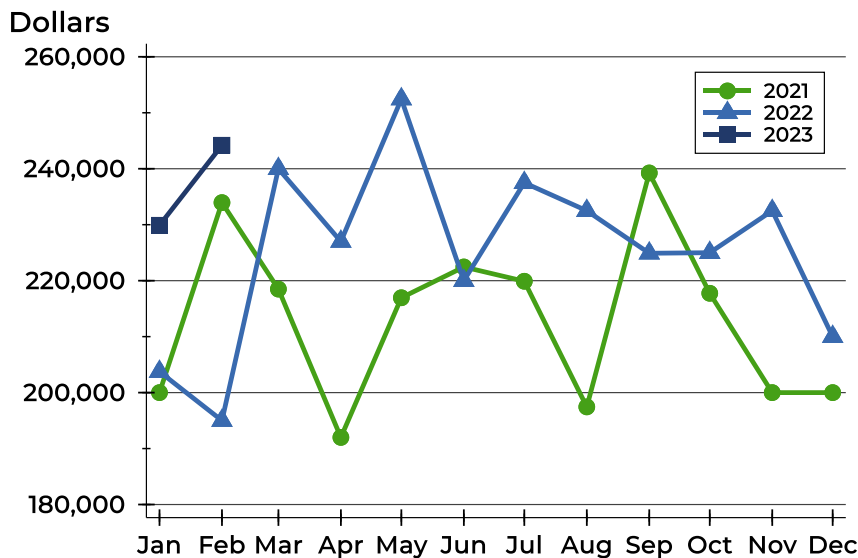
Riley County Contracts Written Analysis

Average Price



Month	2021	2022	2023
January	229,883	228,668	273,956
February	258,609	227,600	269,647
March	238,500	264,169	
April	233,899	267,411	
May	237,460	250,209	
June	236,450	245,241	
July	230,434	252,925	
August	218,103	254,097	
September	275,842	245,622	
October	262,907	253,070	
November	253,665	243,560	
December	226,182	232,381	

Median Price

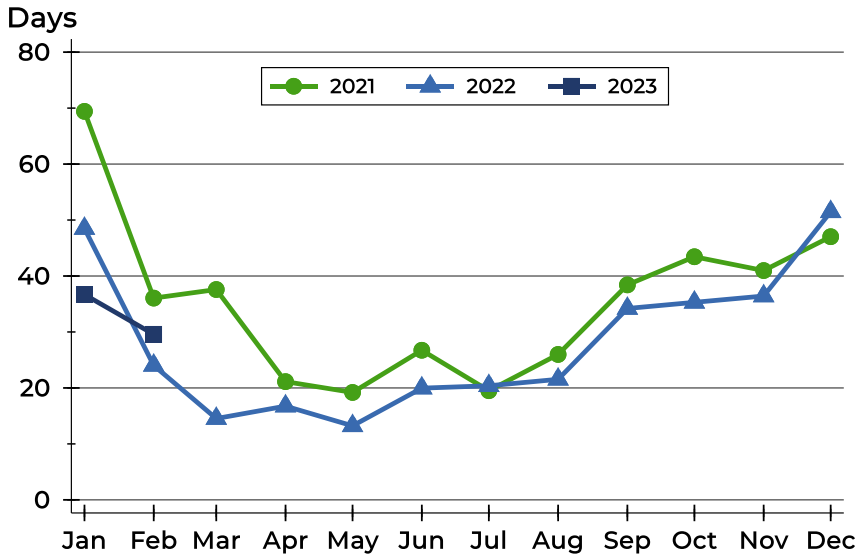


Month	2021	2022	2023
January	200,000	203,750	229,900
February	233,950	195,000	244,200
March	218,500	240,000	
April	192,000	227,000	
May	216,950	252,450	
June	222,450	220,000	
July	219,900	237,500	
August	197,450	232,500	
September	239,250	224,900	
October	217,750	225,000	
November	200,000	232,500	
December	200,000	210,000	



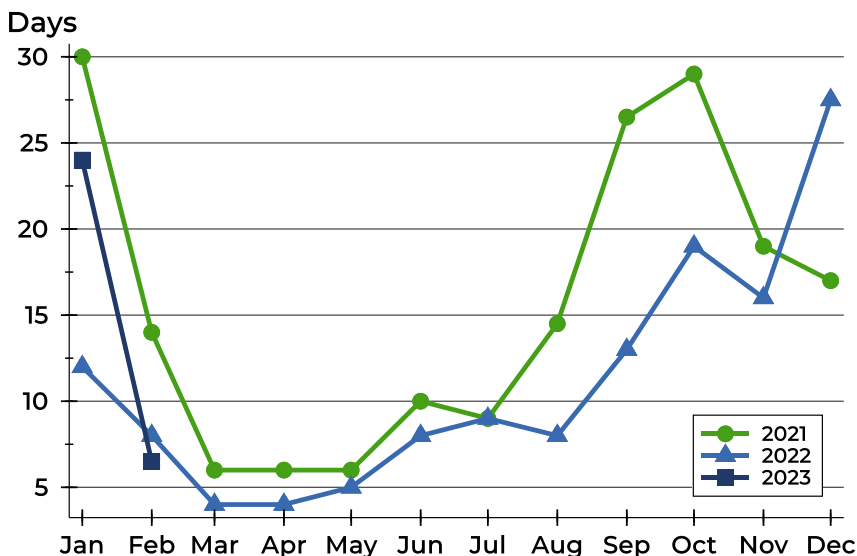
Riley County Contracts Written Analysis

Average DOM



Month	2021	2022	2023
January	69	48	37
February	36	24	30
March	38	15	
April	21	17	
May	19	13	
June	27	20	
July	20	20	
August	26	22	
September	38	34	
October	43	35	
November	41	36	
December	47	51	

Median DOM



Month	2021	2022	2023
January	30	12	24
February	14	8	7
March	6	4	
April	6	4	
May	6	5	
June	10	8	
July	9	9	
August	15	8	
September	27	13	
October	29	19	
November	19	16	
December	17	28	



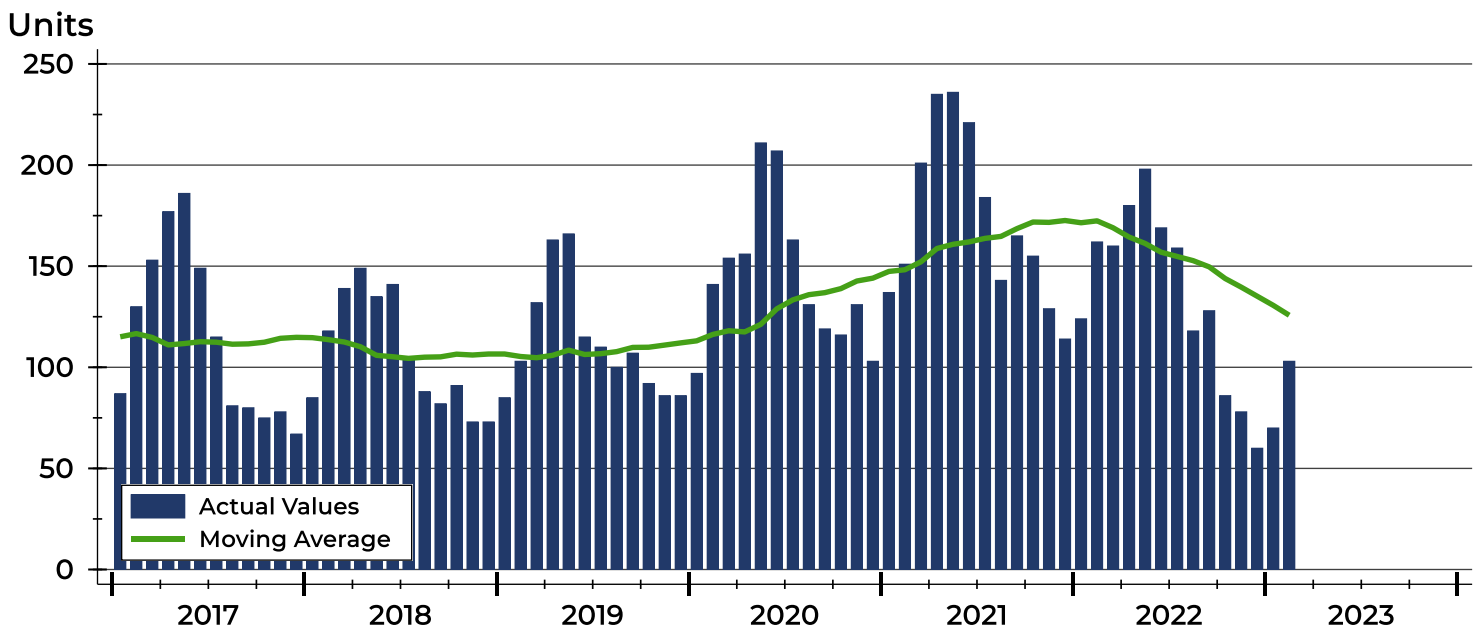
Riley County Pending Contracts Analysis

Summary Statistics for Pending Contracts		End of February		
		2023	2022	Change
Pending Contracts		103	162	-36.4%
Volume (1,000s)		28,178	38,742	-27.3%
Average	List Price	273,576	239,149	14.4%
	Days on Market	40	37	8.1%
	Percent of Original	98.0%	99.3%	-1.3%
Median	List Price	239,900	215,000	11.6%
	Days on Market	14	9	55.6%
	Percent of Original	100.0%	100.0%	0.0%

A total of 103 listings in Riley County had contracts pending at the end of February, down from 162 contracts pending at the end of February 2022.

Pending contracts reflect listings with a contract in place at the end of the month. In contrast, contracts written measures the number of listings put under contract during the month.

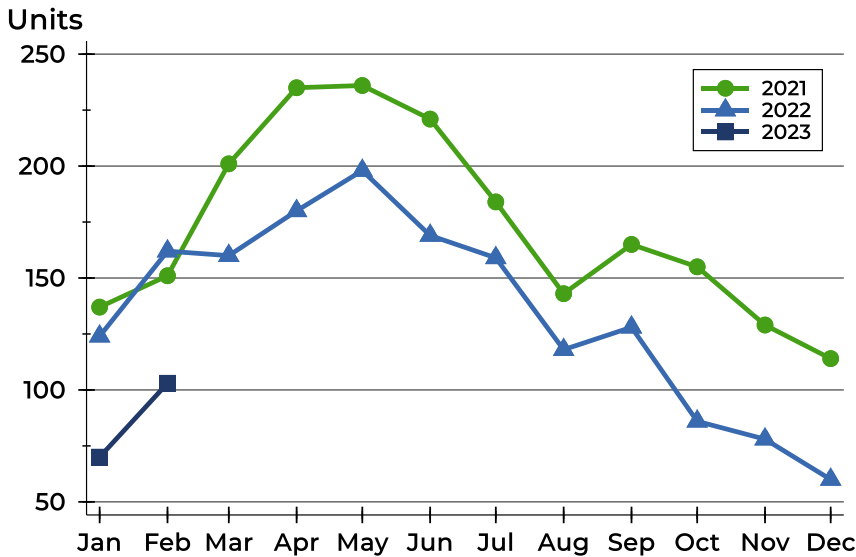
History of Pending Contracts





Riley County Pending Contracts Analysis

Pending Contracts by Month



Month	2021	2022	2023
January	137	124	70
February	151	162	103
March	201	160	
April	235	180	
May	236	198	
June	221	169	
July	184	159	
August	143	118	
September	165	128	
October	155	86	
November	129	78	
December	114	60	

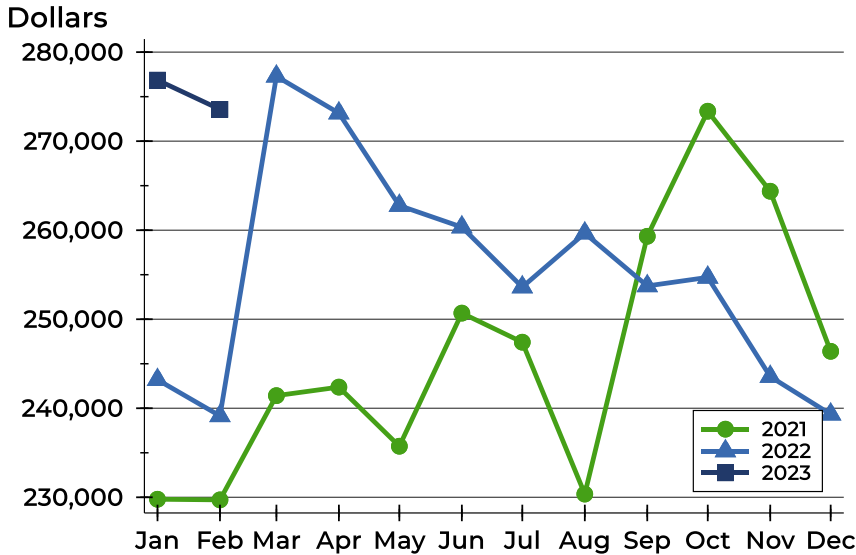
Pending Contracts by Price Range

Price Range	Pending Contracts		List Price		Days on Market		Price as % of Orig.	
	Number	Percent	Average	Median	Avg.	Med.	Avg.	Med.
Below \$25,000	0	0.0%	N/A	N/A	N/A	N/A	N/A	N/A
\$25,000-\$49,999	1	1.0%	40,000	40,000	119	119	53.3%	53.3%
\$50,000-\$99,999	0	0.0%	N/A	N/A	N/A	N/A	N/A	N/A
\$100,000-\$124,999	3	2.9%	114,633	115,000	48	28	97.3%	97.0%
\$125,000-\$149,999	7	6.8%	140,157	140,000	37	14	97.3%	100.0%
\$150,000-\$174,999	10	9.7%	164,820	165,000	26	11	99.3%	100.0%
\$175,000-\$199,999	13	12.6%	189,273	190,000	94	71	95.7%	100.0%
\$200,000-\$249,999	24	23.3%	229,071	231,500	34	22	98.6%	100.0%
\$250,000-\$299,999	14	13.6%	280,129	282,500	4	4	100.0%	100.0%
\$300,000-\$399,999	18	17.5%	336,208	330,000	33	9	98.3%	100.0%
\$400,000-\$499,999	7	6.8%	449,914	455,000	41	17	99.7%	100.0%
\$500,000-\$749,999	4	3.9%	564,975	550,000	33	30	100.0%	100.0%
\$750,000-\$999,999	2	1.9%	912,000	912,000	88	88	100.0%	100.0%
\$1,000,000 and up	0	0.0%	N/A	N/A	N/A	N/A	N/A	N/A



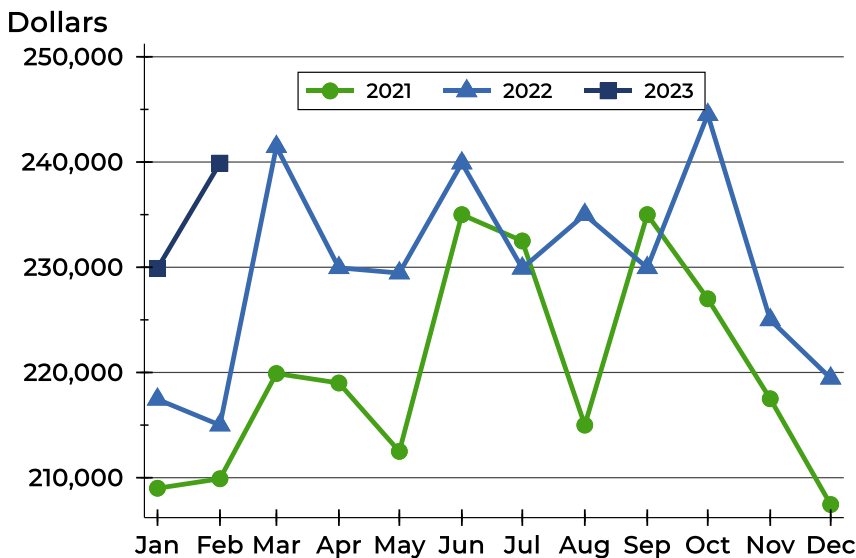
Riley County Pending Contracts Analysis

Average Price



Month	2021	2022	2023
January	229,781	243,204	276,864
February	229,712	239,149	273,576
March	241,420	277,287	
April	242,377	273,152	
May	235,738	262,768	
June	250,688	260,348	
July	247,424	253,615	
August	230,364	259,667	
September	259,319	253,740	
October	273,363	254,702	
November	264,377	243,560	
December	246,398	239,327	

Median Price

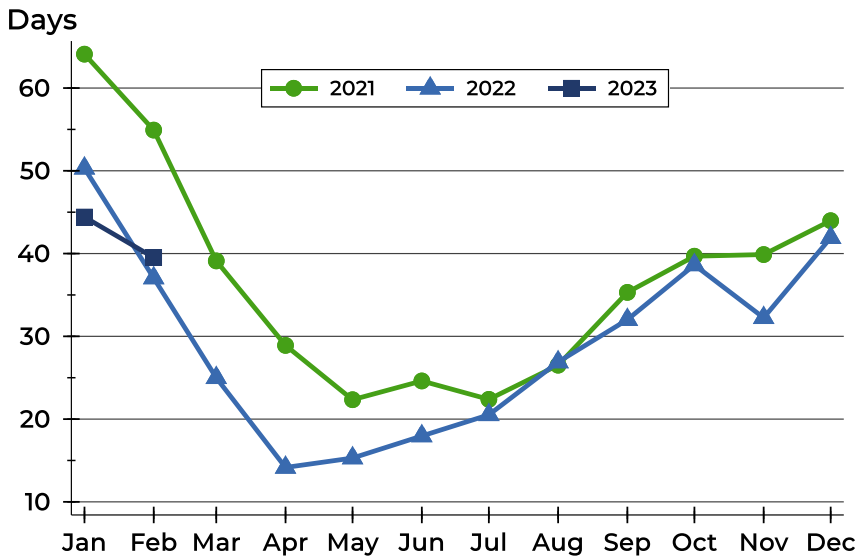


Month	2021	2022	2023
January	209,000	217,450	229,900
February	209,900	215,000	239,900
March	219,900	241,460	
April	219,000	229,950	
May	212,500	229,450	
June	235,000	239,900	
July	232,500	229,900	
August	215,000	235,000	
September	235,000	229,950	
October	227,000	244,500	
November	217,500	225,000	
December	207,450	219,450	



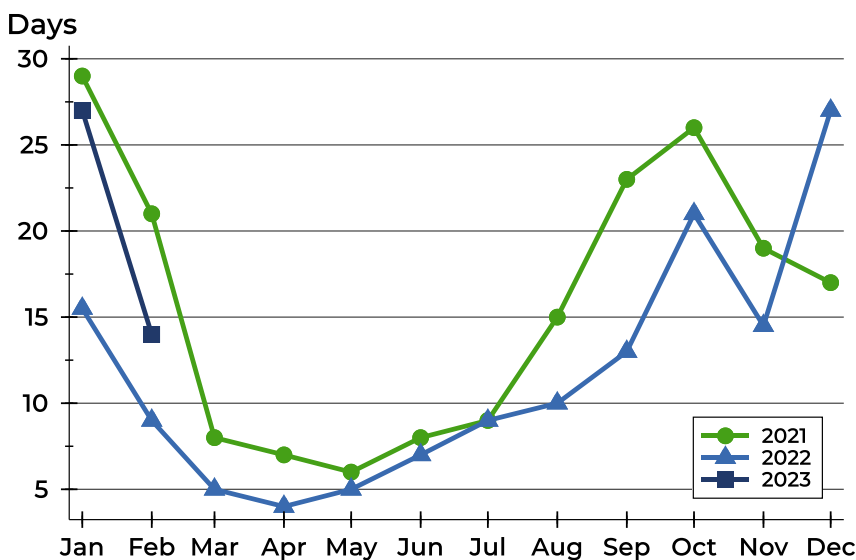
Riley County Pending Contracts Analysis

Average DOM



Month	2021	2022	2023
January	64	50	44
February	55	37	40
March	39	25	
April	29	14	
May	22	15	
June	25	18	
July	22	21	
August	27	27	
September	35	32	
October	40	39	
November	40	32	
December	44	42	

Median DOM



Month	2021	2022	2023
January	29	16	27
February	21	9	14
March	8	5	
April	7	4	
May	6	5	
June	8	7	
July	9	9	
August	15	10	
September	23	13	
October	26	21	
November	19	15	
December	17	27	