



**April  
2023**

# Flint Hills MLS Statistics



**FLINT HILLS  
ASSOCIATION  
OF REALTORS®**

## Riley County Housing Report



### Market Overview

#### Riley County Home Sales Fell in April

Total home sales in Riley County fell last month to 49 units, compared to 82 units in April 2022. Total sales volume was \$12.8 million, down from a year earlier.

The median sale price in April was \$240,000, down from \$272,250 a year earlier. Homes that sold in April were typically on the market for 6 days and sold for 100.0% of their list prices.

#### Riley County Active Listings Up at End of April

The total number of active listings in Riley County at the end of April was 131 units, up from 128 at the same point in 2022. This represents a 1.9 months' supply of homes available for sale. The median list price of homes on the market at the end of April was \$289,000.

During April, a total of 101 contracts were written down from 104 in April 2022. At the end of the month, there were 171 contracts still pending.

### Report Contents

- Summary Statistics – Page 2
- Closed Listing Analysis – Page 3
- Active Listings Analysis – Page 7
- Months' Supply Analysis – Page 11
- New Listings Analysis – Page 12
- Contracts Written Analysis – Page 15
- Pending Contracts Analysis – Page 19

### Contact Information

Margaret Pendleton, Association Executive  
 Flint Hills Association of REALTORS®  
 205 S. Seth Child Road  
 Manhattan, KS 66502  
 785-776-1203  
[ae@flinthillsrealtors.net](mailto:ae@flinthillsrealtors.net)  
[www.flinthillsrealtors.net](http://www.flinthillsrealtors.net)



**April  
2023**

# Flint Hills MLS Statistics



**FLINT HILLS  
ASSOCIATION  
OF REALTORS®**

## Riley County Summary Statistics

April MLS Statistics Three-year History		Current Month			Year-to-Date		
		2023	2022	2021	2023	2022	2021
<b>Home Sales</b>		<b>49</b>	<b>82</b>	<b>87</b>	<b>160</b>	<b>297</b>	<b>296</b>
Change from prior year		-40.2%	-5.7%	38.1%	-46.1%	0.3%	28.1%
<b>Active Listings</b>		<b>131</b>	<b>128</b>	<b>150</b>	<b>N/A</b>	<b>N/A</b>	<b>N/A</b>
Change from prior year		2.3%	-14.7%	-51.0%			
<b>Months' Supply</b>		<b>1.9</b>	<b>1.3</b>	<b>1.8</b>	<b>N/A</b>	<b>N/A</b>	<b>N/A</b>
Change from prior year		46.2%	-27.8%	-60.0%			
<b>New Listings</b>		<b>107</b>	<b>109</b>	<b>139</b>	<b>326</b>	<b>421</b>	<b>469</b>
Change from prior year		-1.8%	-21.6%	65.5%	-22.6%	-10.2%	4.9%
<b>Contracts Written</b>		<b>101</b>	<b>104</b>	<b>118</b>	<b>285</b>	<b>375</b>	<b>432</b>
Change from prior year		-2.9%	-11.9%	73.5%	-24.0%	-13.2%	41.2%
<b>Pending Contracts</b>		<b>171</b>	<b>180</b>	<b>235</b>	<b>N/A</b>	<b>N/A</b>	<b>N/A</b>
Change from prior year		-5.0%	-23.4%	50.6%			
<b>Sales Volume (1,000s)</b>		<b>12,838</b>	<b>23,334</b>	<b>19,675</b>	<b>40,934</b>	<b>69,911</b>	<b>65,591</b>
Change from prior year		-45.0%	18.6%	44.1%	-41.4%	6.6%	42.6%
Average	<b>Sale Price</b>	<b>262,007</b>	<b>284,561</b>	<b>226,152</b>	<b>255,838</b>	<b>235,389</b>	<b>221,590</b>
	Change from prior year	-7.9%	25.8%	4.4%	8.7%	6.2%	11.3%
	<b>List Price of Actives</b>	<b>325,675</b>	<b>290,244</b>	<b>285,687</b>	<b>N/A</b>	<b>N/A</b>	<b>N/A</b>
	Change from prior year	12.2%	1.6%	12.4%			
	<b>Days on Market</b>	<b>24</b>	<b>35</b>	<b>35</b>	<b>38</b>	<b>38</b>	<b>52</b>
Change from prior year	-31.4%	0.0%	-46.2%	0.0%	-26.9%	-28.8%	
	<b>Percent of List</b>	<b>99.5%</b>	<b>100.6%</b>	<b>99.9%</b>	<b>98.2%</b>	<b>99.7%</b>	<b>98.4%</b>
Change from prior year	-1.1%	0.7%	1.9%	-1.5%	1.3%	0.5%	
	<b>Percent of Original</b>	<b>98.3%</b>	<b>100.5%</b>	<b>99.1%</b>	<b>96.6%</b>	<b>98.5%</b>	<b>97.0%</b>
Change from prior year	-2.2%	1.4%	2.0%	-1.9%	1.5%	1.6%	
Median	<b>Sale Price</b>	<b>240,000</b>	<b>272,250</b>	<b>200,000</b>	<b>230,000</b>	<b>212,000</b>	<b>198,000</b>
	Change from prior year	-11.8%	36.1%	9.0%	8.5%	7.1%	12.2%
	<b>List Price of Actives</b>	<b>289,000</b>	<b>246,000</b>	<b>215,000</b>	<b>N/A</b>	<b>N/A</b>	<b>N/A</b>
	Change from prior year	17.5%	14.4%	8.0%			
	<b>Days on Market</b>	<b>6</b>	<b>6</b>	<b>7</b>	<b>17</b>	<b>9</b>	<b>20</b>
Change from prior year	0.0%	-14.3%	-70.8%	88.9%	-55.0%	-54.5%	
	<b>Percent of List</b>	<b>100.0%</b>	<b>100.0%</b>	<b>100.0%</b>	<b>100.0%</b>	<b>100.0%</b>	<b>99.1%</b>
Change from prior year	0.0%	0.0%	1.2%	0.0%	0.9%	0.6%	
	<b>Percent of Original</b>	<b>100.0%</b>	<b>100.0%</b>	<b>100.0%</b>	<b>98.3%</b>	<b>100.0%</b>	<b>98.6%</b>
Change from prior year	0.0%	0.0%	2.0%	-1.7%	1.4%	1.2%	

Note: Year-to-date statistics cannot be calculated for Active Listings, Months' Supply and Pending Contracts.



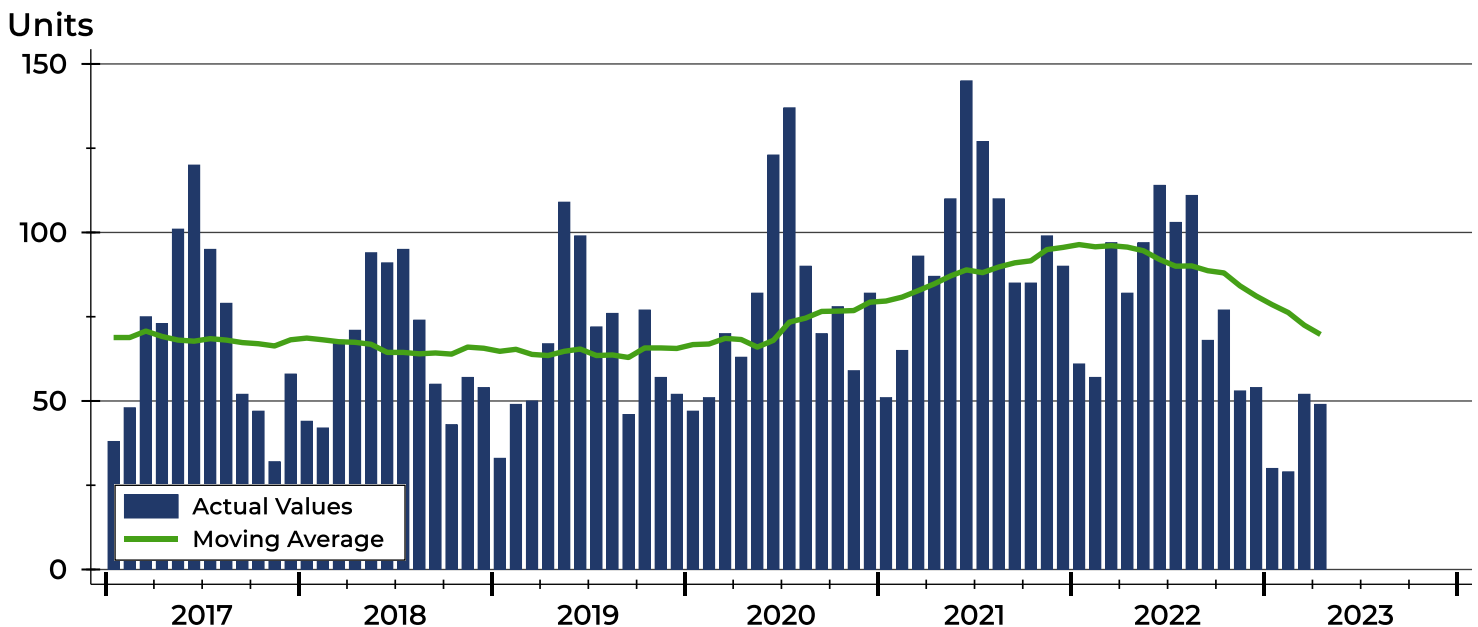
# Riley County Closed Listings Analysis

Summary Statistics for Closed Listings		2023	April 2022	Change	2023	Year-to-Date 2022	Change
Closed Listings		49	82	-40.2%	160	297	-46.1%
Volume (1,000s)		12,838	23,334	-45.0%	40,934	69,911	-41.4%
Months' Supply		1.9	1.3	46.2%	N/A	N/A	N/A
Average	Sale Price	262,007	284,561	-7.9%	255,838	235,389	8.7%
	Days on Market	24	35	-31.4%	38	38	0.0%
	Percent of List	99.5%	100.6%	-1.1%	98.2%	99.7%	-1.5%
	Percent of Original	98.3%	100.5%	-2.2%	96.6%	98.5%	-1.9%
Median	Sale Price	240,000	272,250	-11.8%	230,000	212,000	8.5%
	Days on Market	6	6	0.0%	17	9	88.9%
	Percent of List	100.0%	100.0%	0.0%	100.0%	100.0%	0.0%
	Percent of Original	100.0%	100.0%	0.0%	98.3%	100.0%	-1.7%

A total of 49 homes sold in Riley County in April, down from 82 units in April 2022. Total sales volume fell to \$12.8 million compared to \$23.3 million in the previous year.

The median sales price in April was \$240,000, down 11.8% compared to the prior year. Median days on market was 6 days, down from 30 days in March, but similar to April 2022.

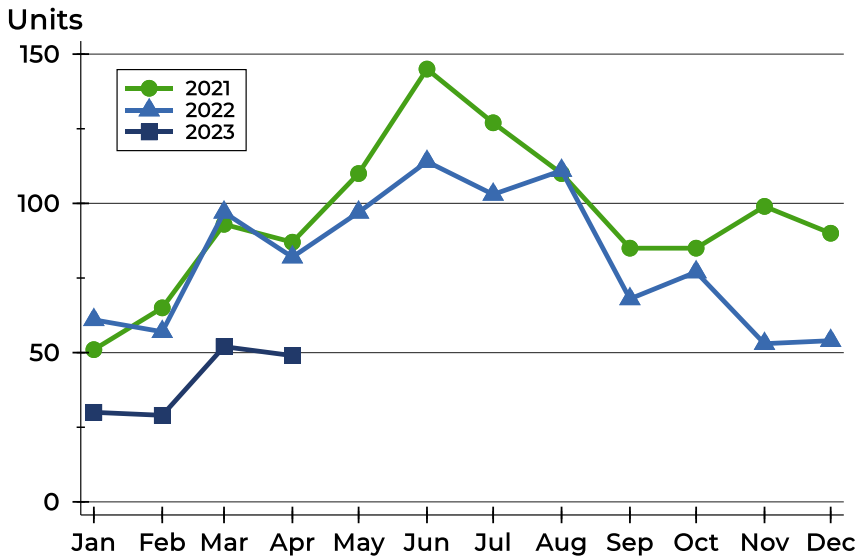
## History of Closed Listings





## Riley County Closed Listings Analysis

### Closed Listings by Month



Month	2021	2022	2023
January	51	61	30
February	65	57	29
March	93	97	52
April	87	82	49
May	110	97	
June	145	114	
July	127	103	
August	110	111	
September	85	68	
October	85	77	
November	99	53	
December	90	54	

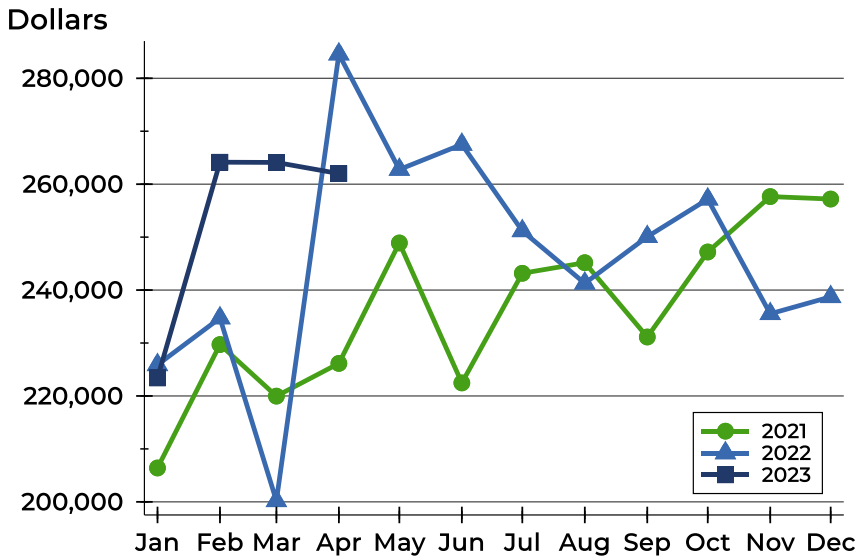
### Closed Listings by Price Range

Price Range	Sales		Months' Supply	Sale Price		Days on Market		Price as % of List		Price as % of Orig.	
	Number	Percent		Average	Median	Avg.	Med.	Avg.	Med.	Avg.	Med.
Below \$25,000	0	0.0%	N/A	N/A	N/A	N/A	N/A	N/A	N/A	N/A	N/A
\$25,000-\$49,999	0	0.0%	N/A	N/A	N/A	N/A	N/A	N/A	N/A	N/A	N/A
\$50,000-\$99,999	1	2.0%	3.3	79,000	79,000	9	9	93.1%	93.1%	93.1%	93.1%
\$100,000-\$124,999	2	4.1%	4.3	105,250	105,250	65	65	100.9%	100.9%	92.3%	92.3%
\$125,000-\$149,999	2	4.1%	1.9	144,250	144,250	23	23	100.9%	100.9%	100.9%	100.9%
\$150,000-\$174,999	7	14.3%	0.6	168,629	171,000	50	11	94.8%	98.3%	92.2%	97.1%
\$175,000-\$199,999	4	8.2%	1.0	187,488	187,475	9	6	98.1%	97.5%	98.1%	97.5%
\$200,000-\$249,999	12	24.5%	1.1	229,417	231,000	30	5	100.1%	100.0%	98.4%	100.0%
\$250,000-\$299,999	6	12.2%	1.3	277,850	276,250	7	3	99.2%	99.9%	99.2%	99.9%
\$300,000-\$399,999	11	22.4%	2.3	334,627	329,000	7	2	102.2%	100.9%	102.2%	100.9%
\$400,000-\$499,999	3	6.1%	4.5	466,333	470,000	8	6	101.1%	100.0%	101.1%	100.0%
\$500,000-\$749,999	0	0.0%	N/A	N/A	N/A	N/A	N/A	N/A	N/A	N/A	N/A
\$750,000-\$999,999	1	2.0%	14.4	830,000	830,000	113	113	97.1%	97.1%	97.1%	97.1%
\$1,000,000 and up	0	0.0%	N/A	N/A	N/A	N/A	N/A	N/A	N/A	N/A	N/A



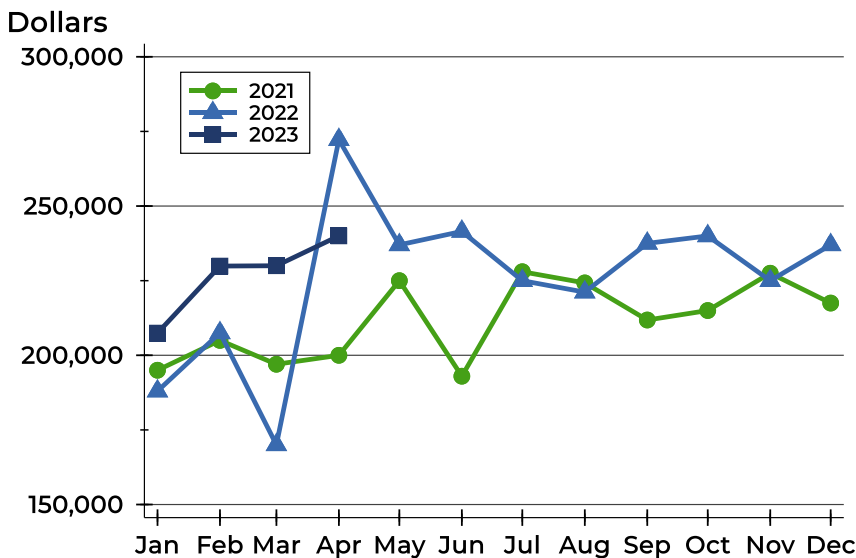
## Riley County Closed Listings Analysis

### Average Price



Month	2021	2022	2023
January	206,402	225,875	<b>223,398</b>
February	229,715	234,723	<b>264,153</b>
March	219,973	200,196	<b>264,104</b>
April	226,152	284,561	<b>262,007</b>
May	248,898	262,771	
June	222,470	267,511	
July	243,175	251,180	
August	245,172	241,275	
September	231,140	250,074	
October	247,194	257,164	
November	257,661	235,522	
December	257,195	238,726	

### Median Price

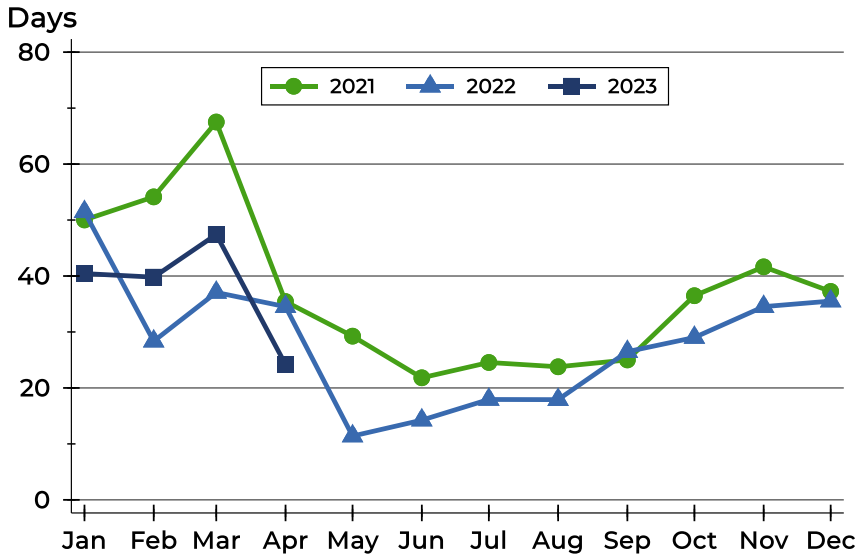


Month	2021	2022	2023
January	195,000	188,000	<b>207,450</b>
February	205,000	207,500	<b>229,900</b>
March	197,000	170,000	<b>230,000</b>
April	200,000	272,250	<b>240,000</b>
May	225,000	237,000	
June	193,000	241,500	
July	228,000	225,000	
August	224,250	221,159	
September	211,819	237,500	
October	215,000	240,000	
November	227,500	225,000	
December	217,500	237,000	



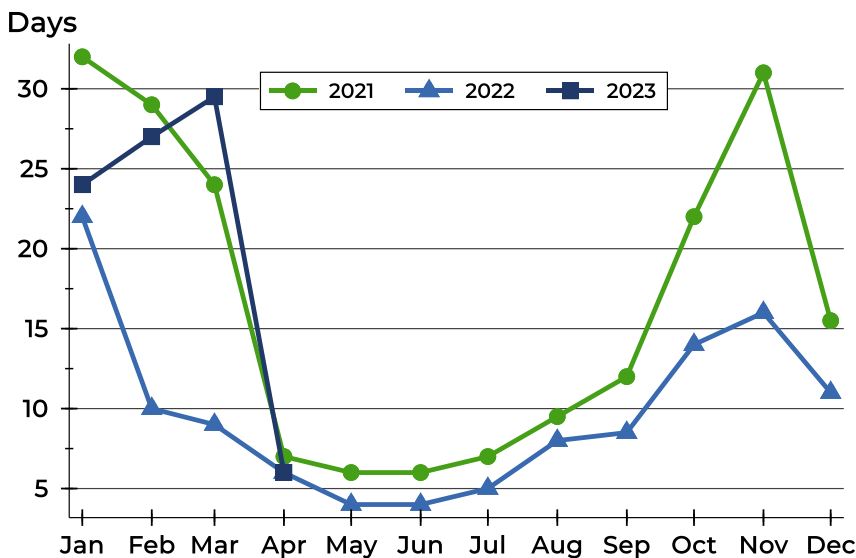
## Riley County Closed Listings Analysis

### Average DOM



Month	2021	2022	2023
January	50	51	40
February	54	28	40
March	68	37	47
April	35	35	24
May	29	11	
June	22	14	
July	25	18	
August	24	18	
September	25	26	
October	36	29	
November	42	35	
December	37	36	

### Median DOM



Month	2021	2022	2023
January	32	22	24
February	29	10	27
March	24	9	30
April	7	6	6
May	6	4	
June	6	4	
July	7	5	
August	10	8	
September	12	9	
October	22	14	
November	31	16	
December	16	11	



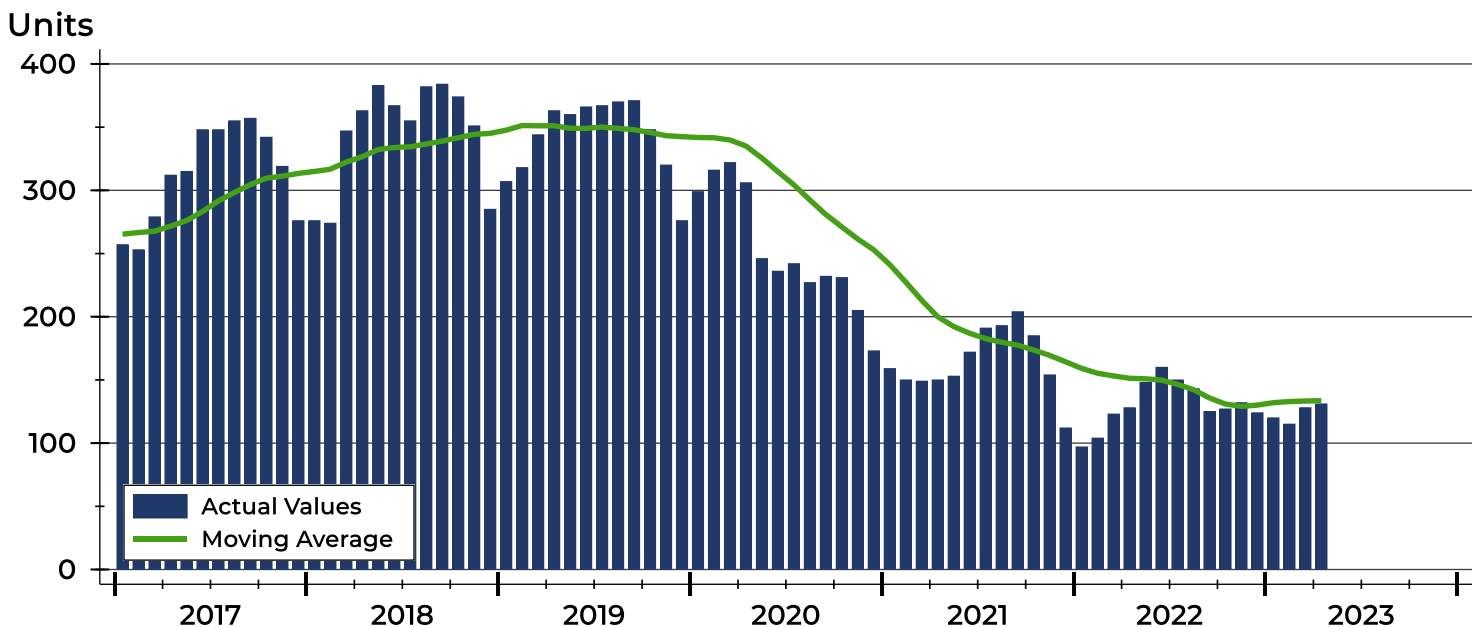
# Riley County Active Listings Analysis

Summary Statistics for Active Listings		2023	End of April 2022	Change
Active Listings		131	128	2.3%
Volume (1,000s)		42,663	37,151	14.8%
Months' Supply		1.9	1.3	46.2%
Average	List Price	325,675	290,244	12.2%
	Days on Market	69	72	-4.2%
	Percent of Original	98.4%	98.5%	-0.1%
Median	List Price	289,000	246,000	17.5%
	Days on Market	38	38	0.0%
	Percent of Original	100.0%	100.0%	0.0%

A total of 131 homes were available for sale in Riley County at the end of April. This represents a 1.9 months' supply of active listings.

The median list price of homes on the market at the end of April was \$289,000, up 17.5% from 2022. The typical time on market for active listings was 38 days, the same as in April 2022.

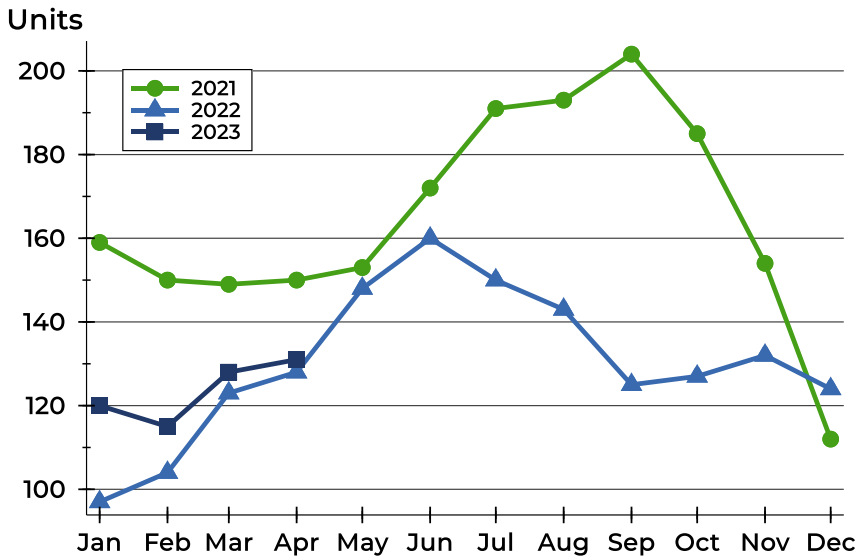
## History of Active Listings





## Riley County Active Listings Analysis

### Active Listings by Month



Month	2021	2022	2023
January	159	97	120
February	150	104	115
March	149	123	128
April	150	128	131
May	153	148	
June	172	160	
July	191	150	
August	193	143	
September	204	125	
October	185	127	
November	154	132	
December	112	124	

### Active Listings by Price Range

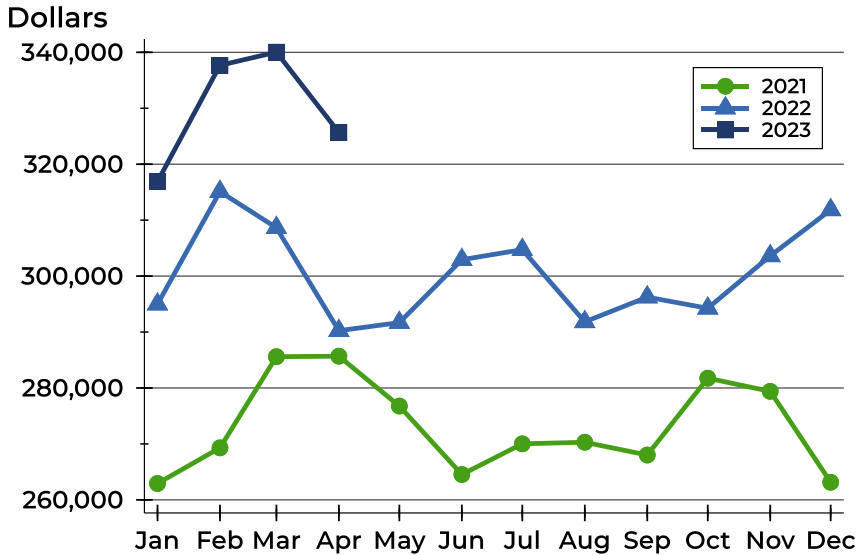
Price Range	Active Listings		Months' Supply	List Price		Days on Market		Price as % of Orig.	
	Number	Percent		Average	Median	Avg.	Med.	Avg.	Med.
Below \$25,000	0	0.0%	N/A	N/A	N/A	N/A	N/A	N/A	N/A
\$25,000-\$49,999	0	0.0%	N/A	N/A	N/A	N/A	N/A	N/A	N/A
\$50,000-\$99,999	6	4.6%	3.3	82,983	86,250	59	40	96.7%	100.0%
\$100,000-\$124,999	15	11.5%	4.3	115,853	115,000	30	24	97.7%	100.0%
\$125,000-\$149,999	6	4.6%	1.9	135,833	134,000	60	59	99.3%	100.0%
\$150,000-\$174,999	5	3.8%	0.6	165,780	167,000	41	7	99.1%	100.0%
\$175,000-\$199,999	8	6.1%	1.0	188,738	187,500	52	37	99.0%	100.0%
\$200,000-\$249,999	15	11.5%	1.1	230,227	230,000	75	45	98.2%	100.0%
\$250,000-\$299,999	15	11.5%	1.3	277,327	277,500	39	17	98.5%	100.0%
\$300,000-\$399,999	29	22.1%	2.3	351,436	350,000	71	42	98.1%	98.6%
\$400,000-\$499,999	16	12.2%	4.5	446,254	449,700	95	47	99.0%	100.0%
\$500,000-\$749,999	8	6.1%	N/A	595,755	600,000	90	62	100.6%	100.0%
\$750,000-\$999,999	6	4.6%	14.4	860,483	867,450	143	78	96.3%	100.0%
\$1,000,000 and up	2	1.5%	N/A	1,200,000	1,200,000	160	160	100.0%	100.0%





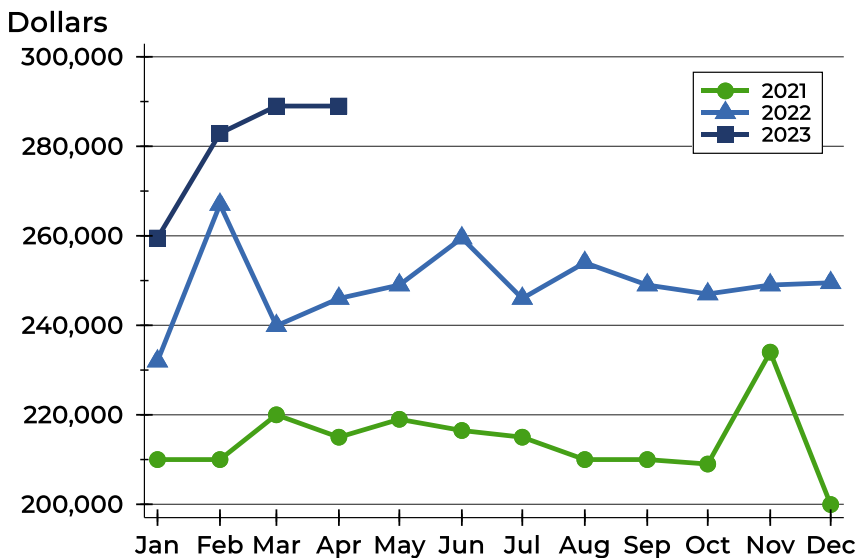
# Riley County Active Listings Analysis

## Average Price



Month	2021	2022	2023
January	262,929	294,980	316,889
February	269,299	315,098	337,680
March	285,597	308,649	340,031
April	285,687	290,244	325,675
May	276,770	291,693	
June	264,539	302,934	
July	270,021	304,729	
August	270,304	291,827	
September	268,017	296,245	
October	281,756	294,245	
November	279,402	303,615	
December	263,144	311,834	

## Median Price

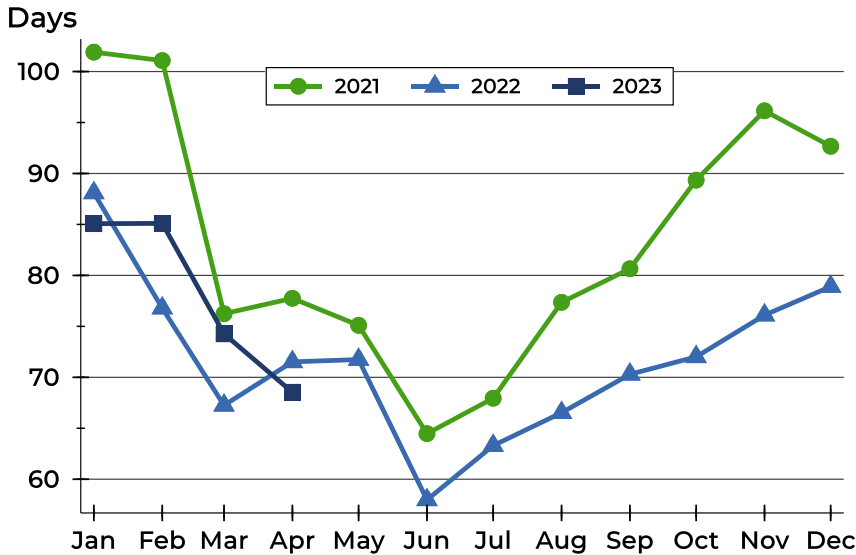


Month	2021	2022	2023
January	210,000	232,000	259,500
February	210,000	267,000	282,900
March	220,000	239,900	289,000
April	215,000	246,000	289,000
May	219,000	249,000	
June	216,500	259,500	
July	215,000	246,000	
August	210,000	254,000	
September	210,000	249,000	
October	209,000	247,000	
November	234,000	249,000	
December	199,950	249,500	



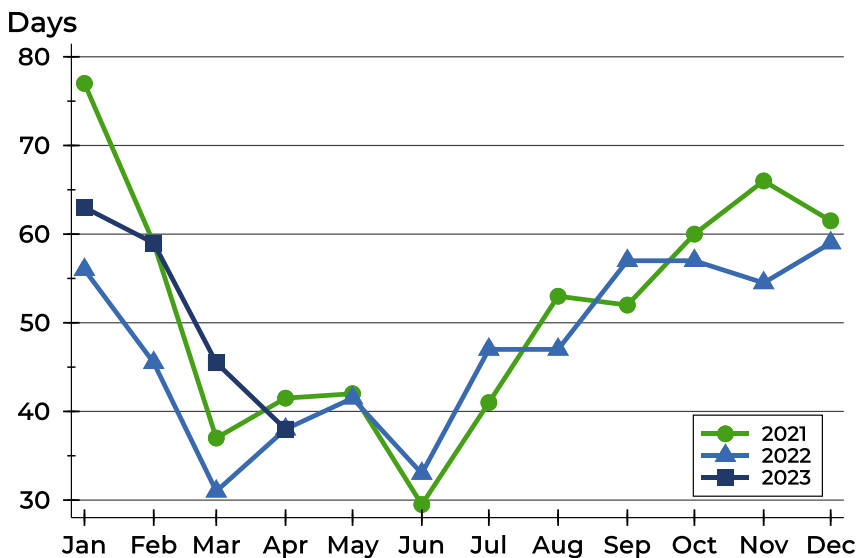
# Riley County Active Listings Analysis

## Average DOM



Month	2021	2022	2023
January	102	88	85
February	101	77	85
March	76	67	74
April	78	72	69
May	75	72	
June	64	58	
July	68	63	
August	77	67	
September	81	70	
October	89	72	
November	96	76	
December	93	79	

## Median DOM

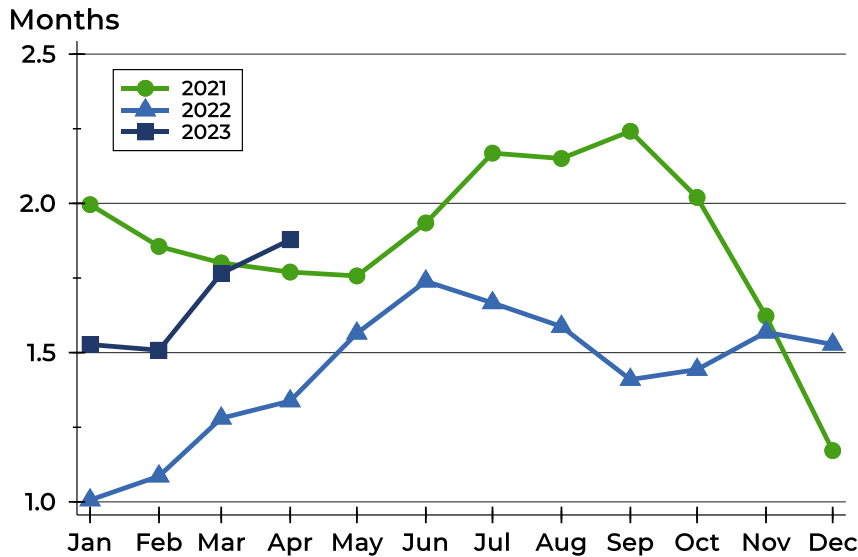


Month	2021	2022	2023
January	77	56	63
February	59	46	59
March	37	31	46
April	42	38	38
May	42	42	
June	30	33	
July	41	47	
August	53	47	
September	52	57	
October	60	57	
November	66	55	
December	62	59	



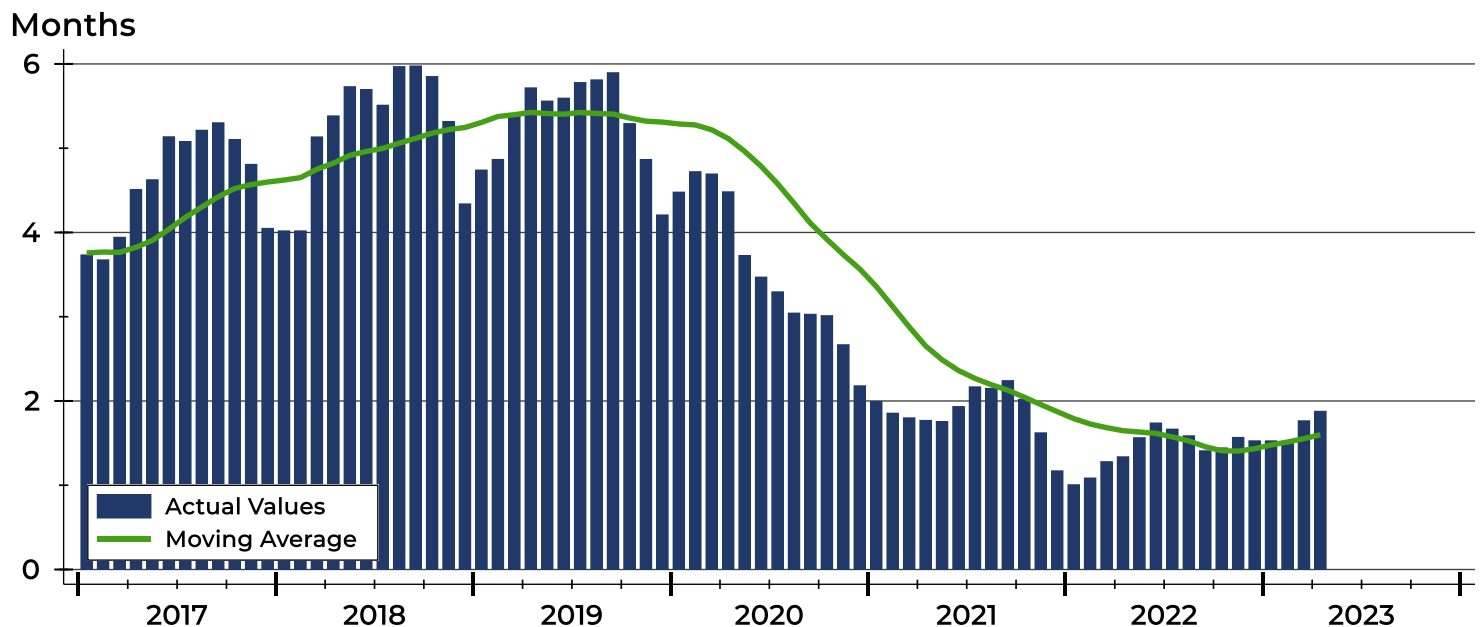
## Riley County Months' Supply Analysis

### Months' Supply by Month



Month	2021	2022	2023
January	2.0	1.0	1.5
February	1.9	1.1	1.5
March	1.8	1.3	1.8
April	1.8	1.3	1.9
May	1.8	1.6	
June	1.9	1.7	
July	2.2	1.7	
August	2.2	1.6	
September	2.2	1.4	
October	2.0	1.4	
November	1.6	1.6	
December	1.2	1.5	

### History of Month's Supply





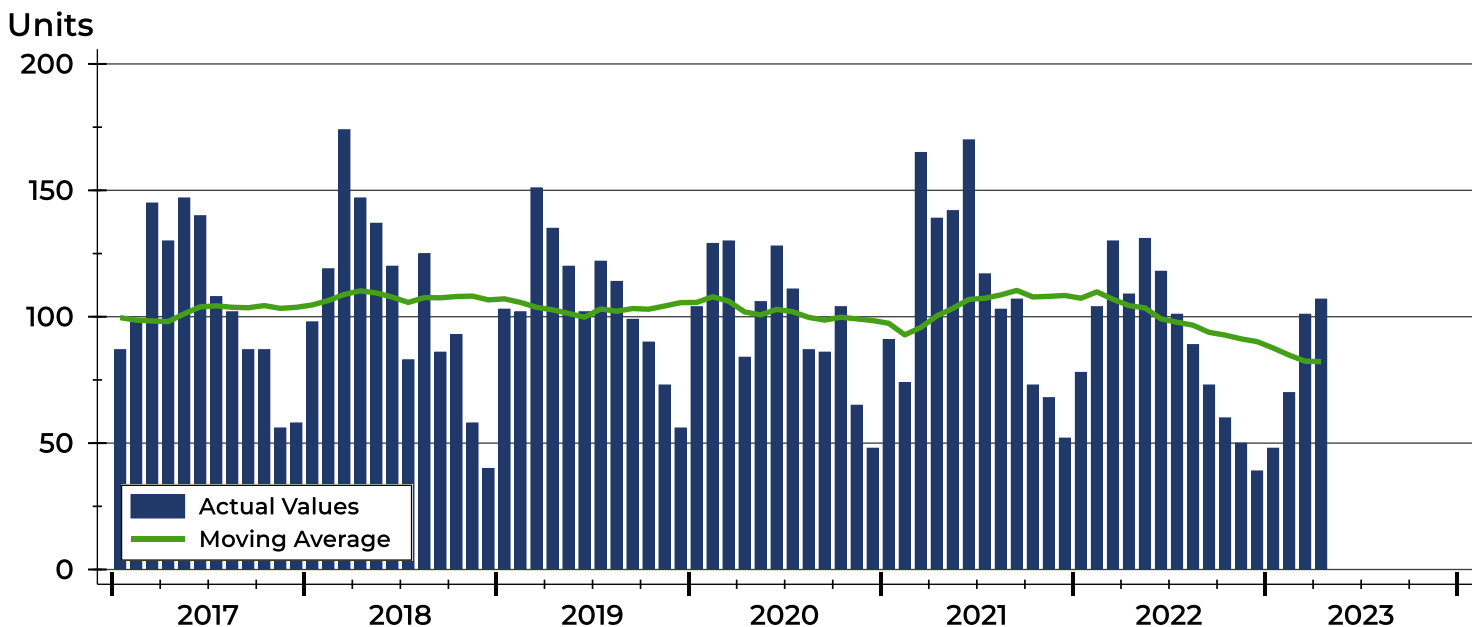
# Riley County New Listings Analysis

Summary Statistics for New Listings		2023	April 2022	Change
Current Month	New Listings	107	109	-1.8%
	Volume (1,000s)	30,705	27,069	13.4%
	Average List Price	286,967	248,339	15.6%
	Median List Price	259,900	229,500	13.2%
Year-to-Date	New Listings	326	421	-22.6%
	Volume (1,000s)	94,179	109,401	-13.9%
	Average List Price	288,894	259,861	11.2%
	Median List Price	264,750	230,000	15.1%

A total of 107 new listings were added in Riley County during April, down 1.8% from the same month in 2022. Year-to-date Riley County has seen 326 new listings.

The median list price of these homes was \$259,900 up from \$229,500 in 2022.

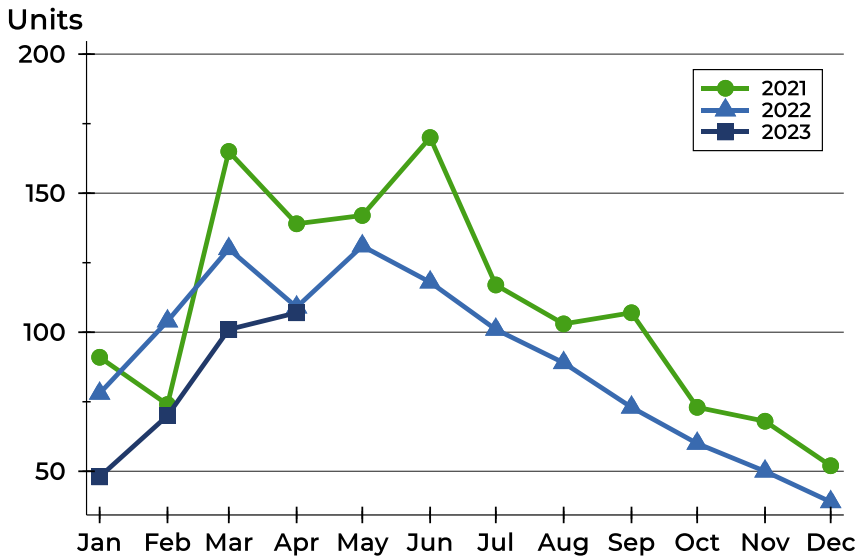
## History of New Listings





## Riley County New Listings Analysis

### New Listings by Month



Month	2021	2022	2023
January	91	78	48
February	74	104	70
March	165	130	101
April	139	109	107
May	142	131	
June	170	118	
July	117	101	
August	103	89	
September	107	73	
October	73	60	
November	68	50	
December	52	39	

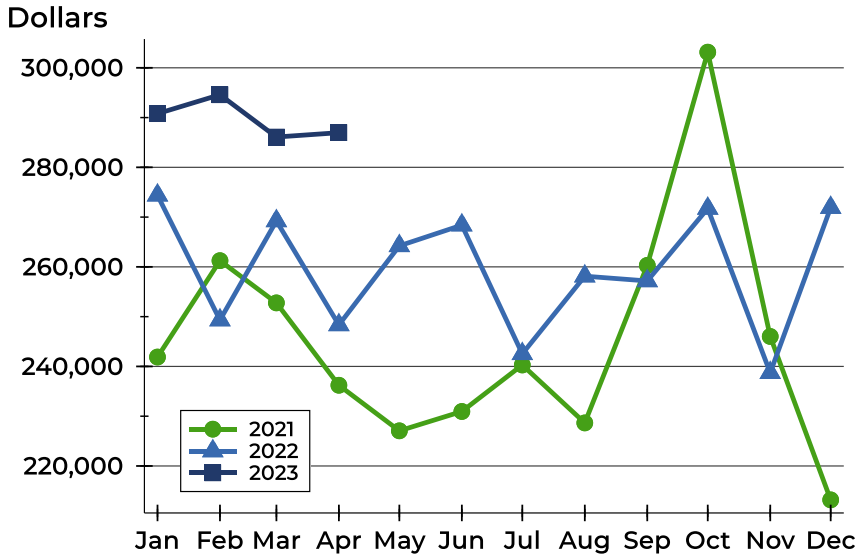
### New Listings by Price Range

Price Range	New Listings		List Price		Days on Market		Price as % of Orig.	
	Number	Percent	Average	Median	Avg.	Med.	Avg.	Med.
Below \$25,000	0	0.0%	N/A	N/A	N/A	N/A	N/A	N/A
\$25,000-\$49,999	0	0.0%	N/A	N/A	N/A	N/A	N/A	N/A
\$50,000-\$99,999	2	1.9%	57,950	57,950	22	22	88.8%	88.8%
\$100,000-\$124,999	10	9.3%	115,240	115,000	26	31	100.0%	100.0%
\$125,000-\$149,999	4	3.7%	136,550	135,700	10	10	100.0%	100.0%
\$150,000-\$174,999	7	6.5%	162,114	160,000	5	4	100.0%	100.0%
\$175,000-\$199,999	8	7.5%	188,100	190,000	7	4	100.0%	100.0%
\$200,000-\$249,999	19	17.8%	227,858	229,500	9	4	99.6%	100.0%
\$250,000-\$299,999	16	15.0%	269,922	269,000	10	8	99.5%	100.0%
\$300,000-\$399,999	25	23.4%	344,612	335,000	14	10	99.7%	100.0%
\$400,000-\$499,999	9	8.4%	448,833	449,500	12	11	100.0%	100.0%
\$500,000-\$749,999	5	4.7%	559,700	548,500	11	10	99.3%	100.0%
\$750,000-\$999,999	1	0.9%	950,000	950,000	18	18	100.0%	100.0%
\$1,000,000 and up	1	0.9%	1,200,000	1,200,000	31	31	100.0%	100.0%



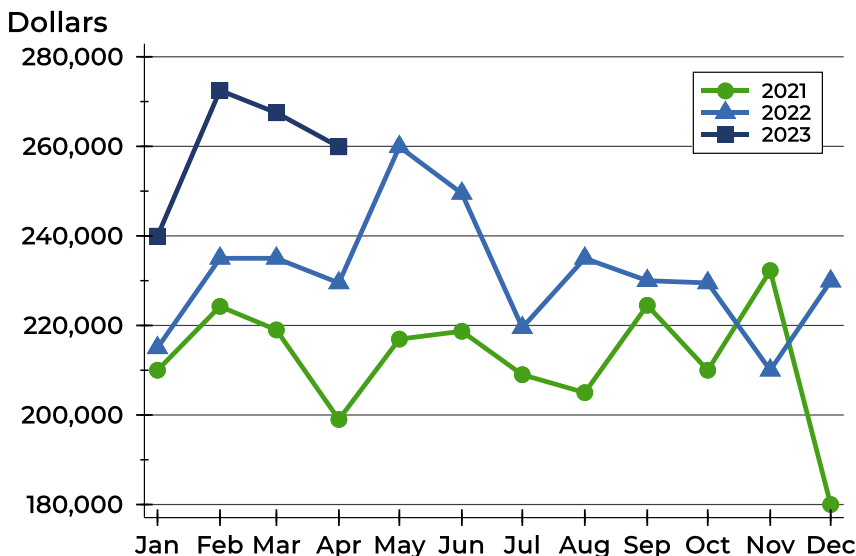
## Riley County New Listings Analysis

### Average Price



Month	2021	2022	2023
January	241,888	274,397	<b>290,788</b>
February	261,254	249,317	<b>294,586</b>
March	252,772	269,234	<b>286,091</b>
April	236,225	248,339	<b>286,967</b>
May	227,067	264,226	
June	230,952	268,385	
July	240,298	242,536	
August	228,658	258,135	
September	260,308	257,179	
October	303,145	271,739	
November	246,026	238,735	
December	213,190	271,909	

### Median Price



Month	2021	2022	2023
January	210,000	215,000	<b>239,950</b>
February	224,250	235,000	<b>272,500</b>
March	219,000	235,000	<b>267,500</b>
April	199,000	229,500	<b>259,900</b>
May	216,950	259,900	
June	218,700	249,500	
July	209,000	219,500	
August	205,000	235,000	
September	224,500	230,000	
October	209,999	229,500	
November	232,250	210,000	
December	180,000	229,900	



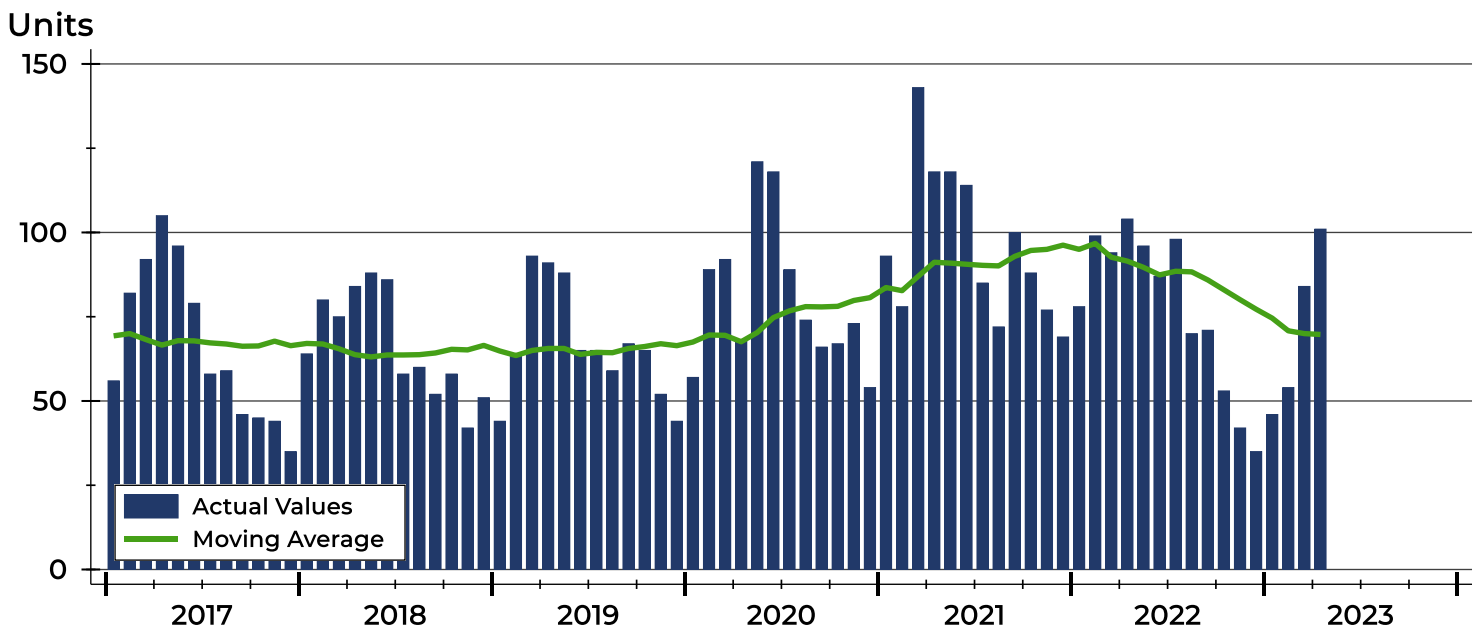
# Riley County Contracts Written Analysis

Summary Statistics for Contracts Written		2023	April 2022	Change	Year-to-Date		
		2023	2022		2023	2022	Change
Contracts Written		101	104	-2.9%	285	375	-24.0%
Volume (1,000s)		29,381	27,811	5.6%	79,057	93,011	-15.0%
Average	Sale Price	290,903	267,411	8.8%	277,391	248,030	11.8%
	Days on Market	27	17	58.8%	30	25	20.0%
	Percent of Original	99.2%	100.4%	-1.2%	98.2%	99.9%	-1.7%
Median	Sale Price	250,000	227,000	10.1%	245,000	220,000	11.4%
	Days on Market	7	4	75.0%	8	5	60.0%
	Percent of Original	100.0%	100.0%	0.0%	100.0%	100.0%	0.0%

A total of 101 contracts for sale were written in Riley County during the month of April, down from 104 in 2022. The median list price of these homes was \$250,000, up from \$227,000 the prior year.

Half of the homes that went under contract in April were on the market less than 7 days, compared to 4 days in April 2022.

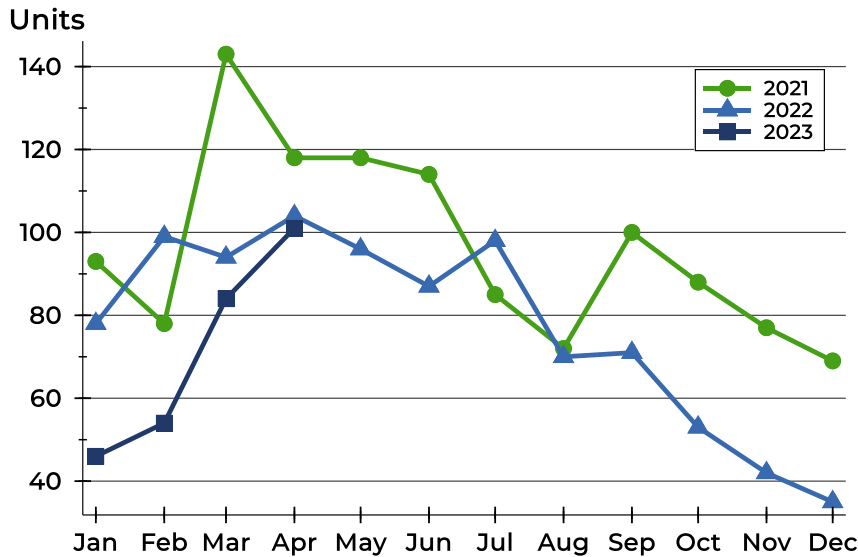
## History of Contracts Written





## Riley County Contracts Written Analysis

### Contracts Written by Month



Month	2021	2022	2023
January	93	78	46
February	78	99	54
March	143	94	84
April	118	104	101
May	118	96	
June	114	87	
July	85	98	
August	72	70	
September	100	71	
October	88	53	
November	77	42	
December	69	35	

### Contracts Written by Price Range

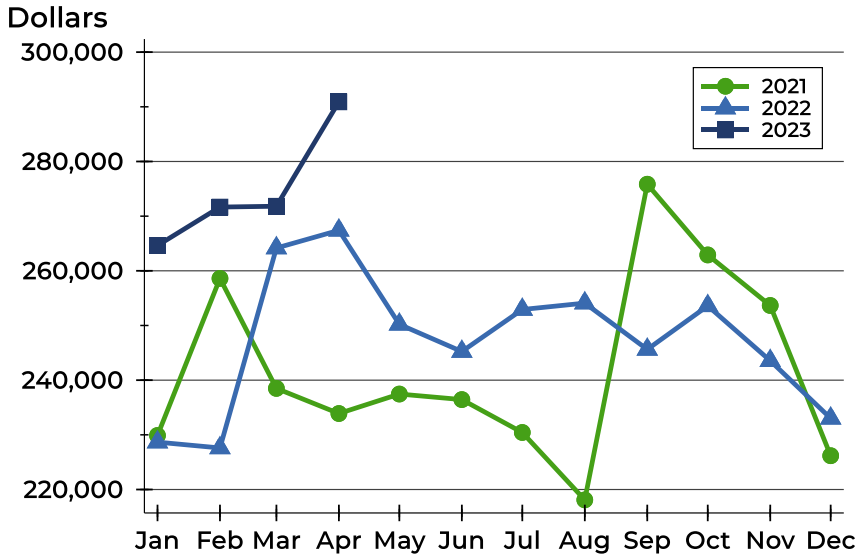
Price Range	Contracts Written		List Price		Days on Market		Price as % of Orig.	
	Number	Percent	Average	Median	Avg.	Med.	Avg.	Med.
Below \$25,000	0	0.0%	N/A	N/A	N/A	N/A	N/A	N/A
\$25,000-\$49,999	0	0.0%	N/A	N/A	N/A	N/A	N/A	N/A
\$50,000-\$99,999	0	0.0%	N/A	N/A	N/A	N/A	N/A	N/A
\$100,000-\$124,999	4	4.0%	116,725	117,250	18	8	100.0%	100.0%
\$125,000-\$149,999	6	5.9%	139,983	138,250	47	30	100.0%	100.0%
\$150,000-\$174,999	7	6.9%	161,971	160,000	23	4	98.9%	100.0%
\$175,000-\$199,999	8	7.9%	187,475	187,500	7	3	100.0%	100.0%
\$200,000-\$249,999	25	24.8%	226,768	225,000	30	4	99.8%	100.0%
\$250,000-\$299,999	16	15.8%	266,641	265,000	11	7	99.5%	100.0%
\$300,000-\$399,999	16	15.8%	331,369	327,500	27	6	98.5%	100.0%
\$400,000-\$499,999	11	10.9%	453,091	449,000	39	12	98.8%	100.0%
\$500,000-\$749,999	7	6.9%	624,214	625,000	44	15	100.9%	100.0%
\$750,000-\$999,999	1	1.0%	850,000	850,000	67	67	70.8%	70.8%
\$1,000,000 and up	0	0.0%	N/A	N/A	N/A	N/A	N/A	N/A





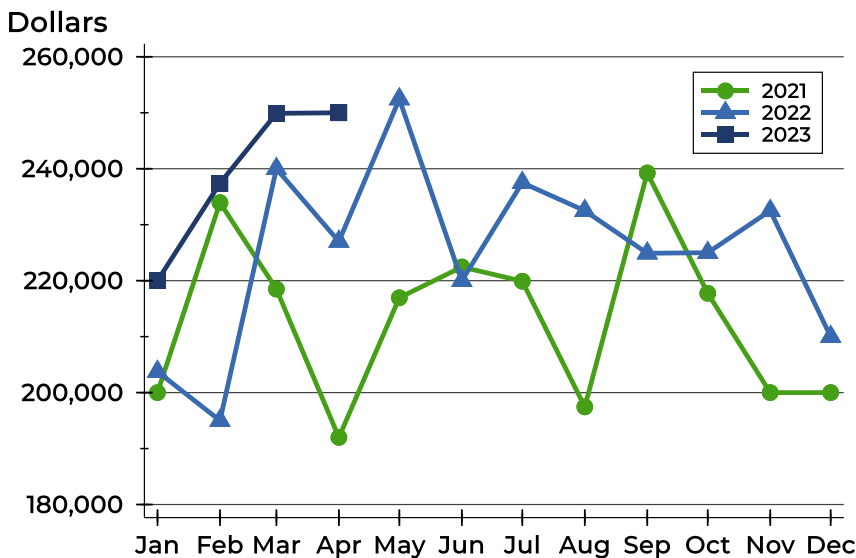
# Riley County Contracts Written Analysis

## Average Price



Month	2021	2022	2023
January	229,883	228,668	<b>264,630</b>
February	258,609	227,600	<b>271,664</b>
March	238,500	264,169	<b>271,815</b>
April	233,899	267,411	<b>290,903</b>
May	237,460	250,209	
June	236,450	245,241	
July	230,434	252,925	
August	218,103	254,097	
September	275,842	245,622	
October	262,907	253,600	
November	253,665	243,560	
December	226,182	233,020	

## Median Price

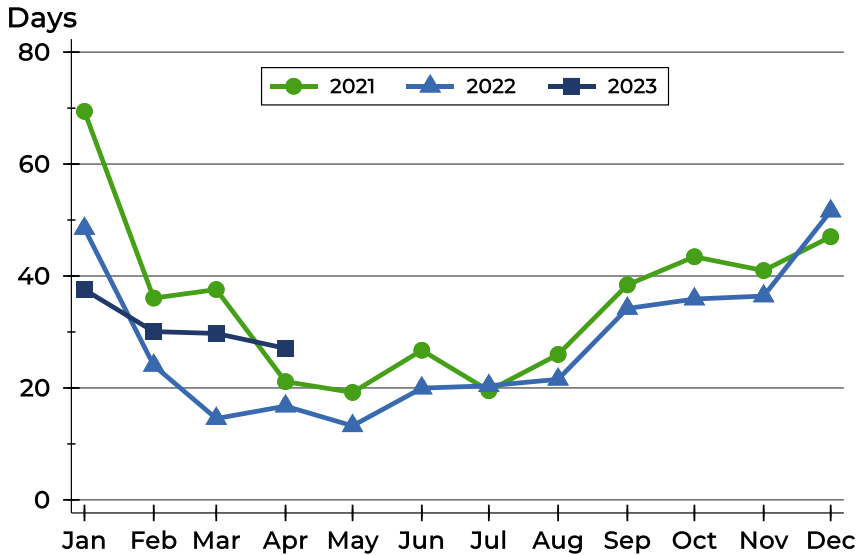


Month	2021	2022	2023
January	200,000	203,750	<b>220,000</b>
February	233,950	195,000	<b>237,400</b>
March	218,500	240,000	<b>249,900</b>
April	192,000	227,000	<b>250,000</b>
May	216,950	252,450	
June	222,450	220,000	
July	219,900	237,500	
August	197,450	232,500	
September	239,250	224,900	
October	217,750	225,000	
November	200,000	232,500	
December	200,000	210,000	



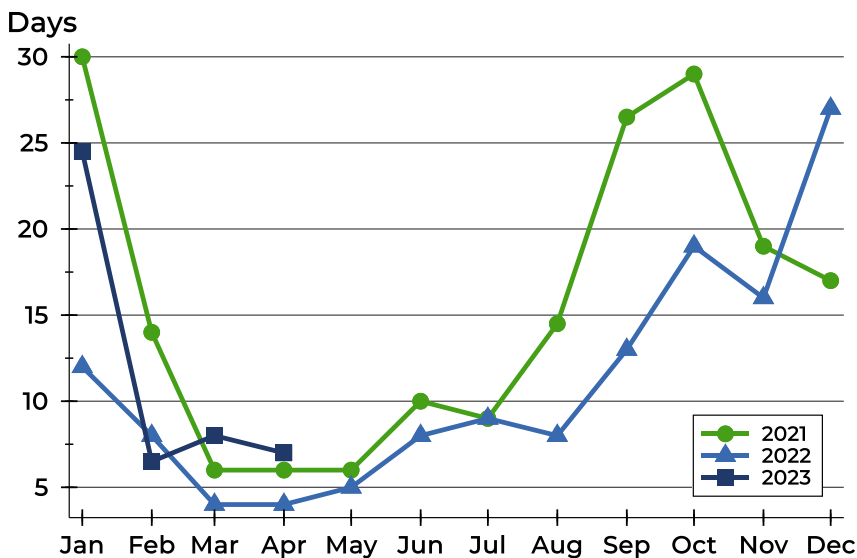
# Riley County Contracts Written Analysis

## Average DOM



Month	2021	2022	2023
January	69	48	38
February	36	24	30
March	38	15	30
April	21	17	27
May	19	13	
June	27	20	
July	20	20	
August	26	22	
September	38	34	
October	43	36	
November	41	36	
December	47	52	

## Median DOM



Month	2021	2022	2023
January	30	12	25
February	14	8	7
March	6	4	8
April	6	4	7
May	6	5	
June	10	8	
July	9	9	
August	15	8	
September	27	13	
October	29	19	
November	19	16	
December	17	27	



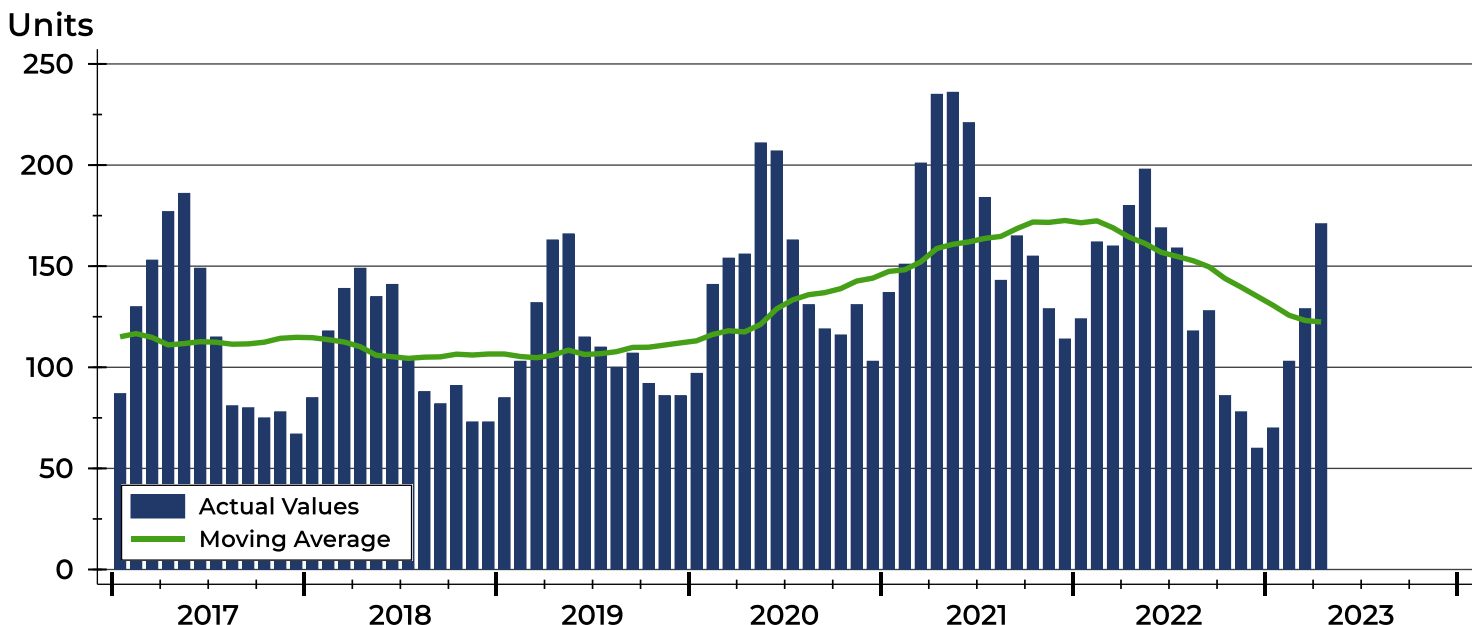
# Riley County Pending Contracts Analysis

Summary Statistics for Pending Contracts		2023	End of April 2022	Change
Pending Contracts		171	180	-5.0%
Volume (1,000s)		49,195	49,167	0.1%
Average	List Price	287,689	273,152	5.3%
	Days on Market	28	14	100.0%
	Percent of Original	99.1%	99.6%	-0.5%
Median	List Price	259,900	229,950	13.0%
	Days on Market	7	4	75.0%
	Percent of Original	100.0%	100.0%	0.0%

A total of 171 listings in Riley County had contracts pending at the end of April, down from 180 contracts pending at the end of April 2022.

Pending contracts reflect listings with a contract in place at the end of the month. In contrast, contracts written measures the number of listings put under contract during the month.

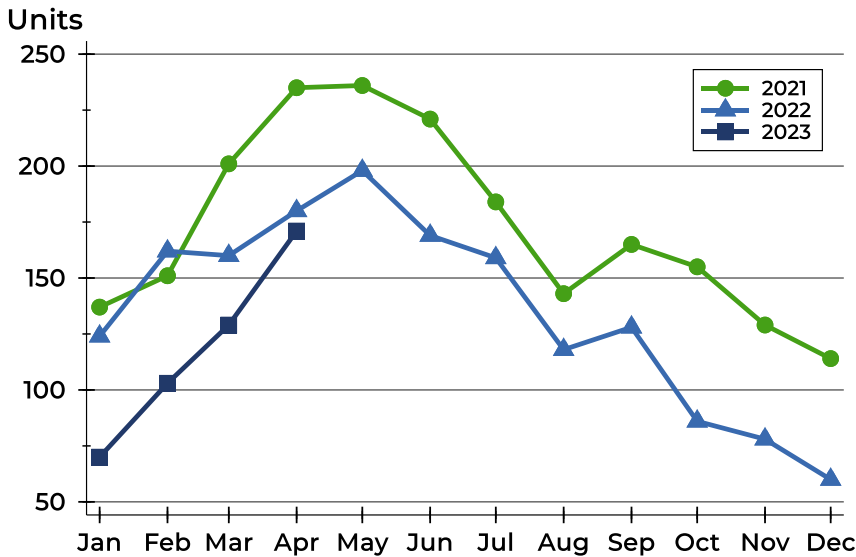
## History of Pending Contracts





## Riley County Pending Contracts Analysis

### Pending Contracts by Month



Month	2021	2022	2023
January	137	124	70
February	151	162	103
March	201	160	129
April	235	180	171
May	236	198	
June	221	169	
July	184	159	
August	143	118	
September	165	128	
October	155	86	
November	129	78	
December	114	60	

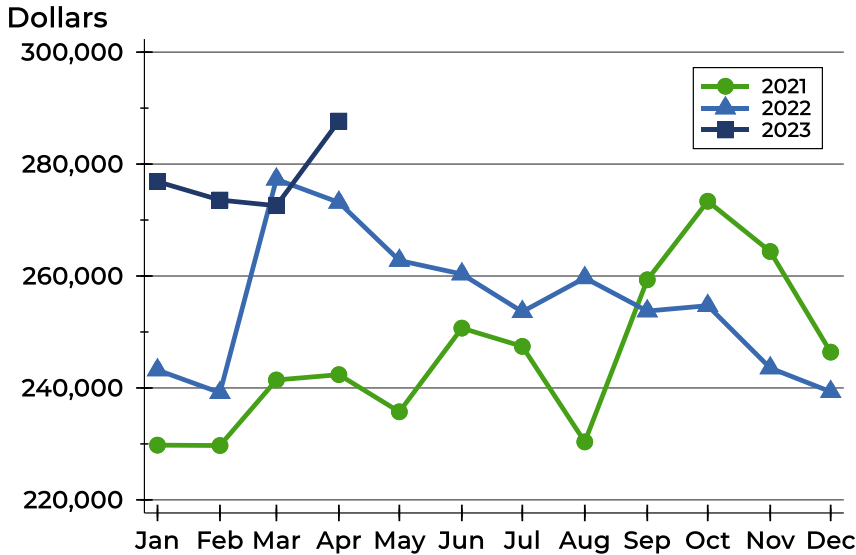
### Pending Contracts by Price Range

Price Range	Pending Contracts		List Price		Days on Market		Price as % of Orig.	
	Number	Percent	Average	Median	Avg.	Med.	Avg.	Med.
Below \$25,000	0	0.0%	N/A	N/A	N/A	N/A	N/A	N/A
\$25,000-\$49,999	1	0.6%	40,000	40,000	119	119	53.3%	53.3%
\$50,000-\$99,999	0	0.0%	N/A	N/A	N/A	N/A	N/A	N/A
\$100,000-\$124,999	6	3.5%	117,817	118,250	26	8	99.4%	100.0%
\$125,000-\$149,999	9	5.3%	137,178	136,500	39	11	100.0%	100.0%
\$150,000-\$174,999	15	8.8%	164,533	165,000	18	5	99.5%	100.0%
\$175,000-\$199,999	13	7.6%	186,754	185,000	6	3	100.0%	100.0%
\$200,000-\$249,999	36	21.1%	224,536	220,000	30	7	99.8%	100.0%
\$250,000-\$299,999	26	15.2%	270,817	269,750	11	7	99.6%	100.0%
\$300,000-\$399,999	37	21.6%	337,404	334,900	32	6	98.7%	100.0%
\$400,000-\$499,999	16	9.4%	456,658	455,162	50	20	99.0%	100.0%
\$500,000-\$749,999	11	6.4%	595,682	569,000	34	15	100.6%	100.0%
\$750,000-\$999,999	1	0.6%	850,000	850,000	67	67	70.8%	70.8%
\$1,000,000 and up	0	0.0%	N/A	N/A	N/A	N/A	N/A	N/A



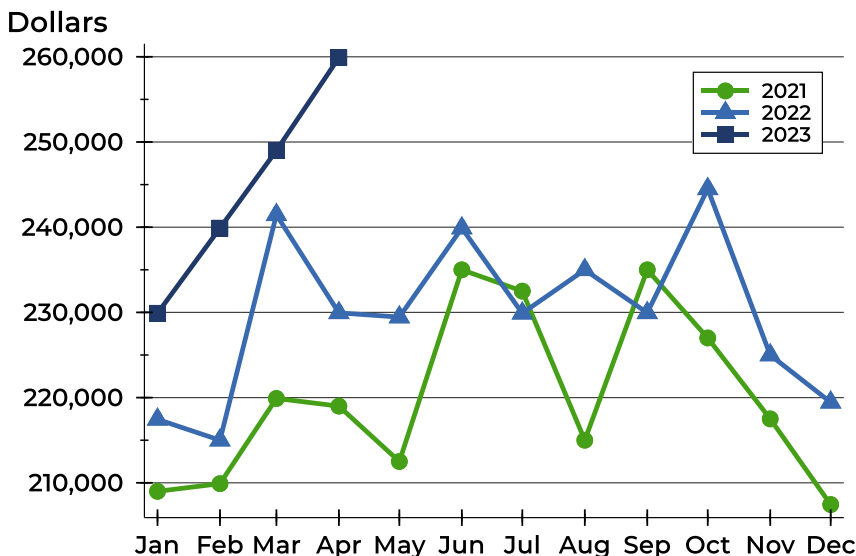
## Riley County Pending Contracts Analysis

### Average Price



Month	2021	2022	2023
January	229,781	243,204	<b>276,864</b>
February	229,712	239,149	<b>273,576</b>
March	241,420	277,287	<b>272,565</b>
April	242,377	273,152	<b>287,689</b>
May	235,738	262,768	
June	250,688	260,348	
July	247,424	253,615	
August	230,364	259,667	
September	259,319	253,740	
October	273,363	254,702	
November	264,377	243,560	
December	246,398	239,327	

### Median Price

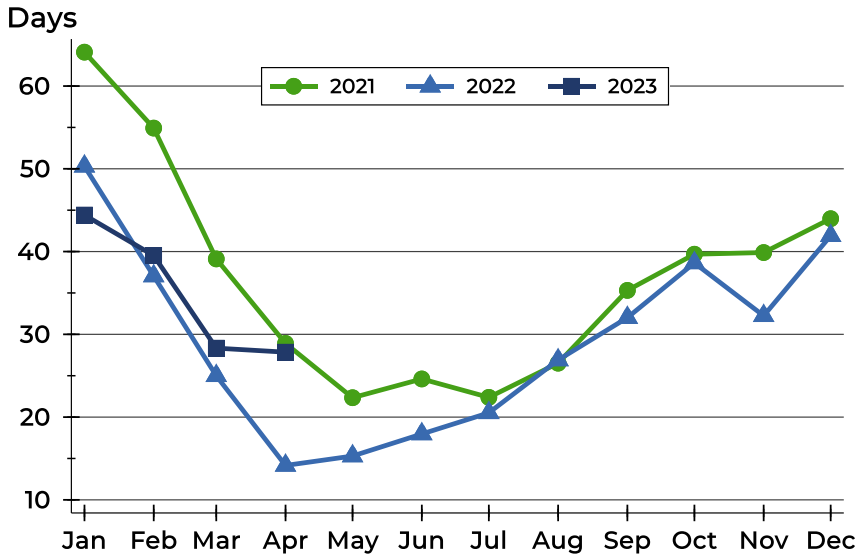


Month	2021	2022	2023
January	209,000	217,450	<b>229,900</b>
February	209,900	215,000	<b>239,900</b>
March	219,900	241,460	<b>249,000</b>
April	219,000	229,950	<b>259,900</b>
May	212,500	229,450	
June	235,000	239,900	
July	232,500	229,900	
August	215,000	235,000	
September	235,000	229,950	
October	227,000	244,500	
November	217,500	225,000	
December	207,450	219,450	



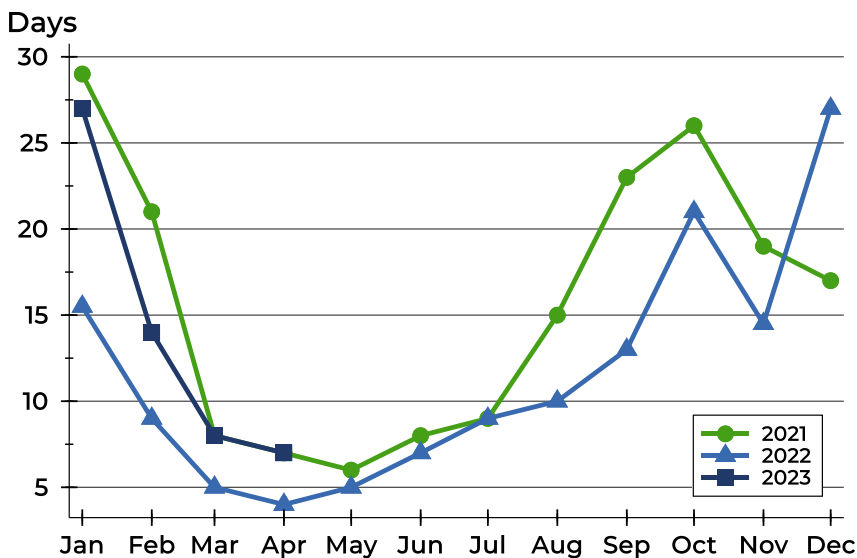
## Riley County Pending Contracts Analysis

### Average DOM



Month	2021	2022	2023
January	64	50	44
February	55	37	40
March	39	25	28
April	29	14	28
May	22	15	
June	25	18	
July	22	21	
August	27	27	
September	35	32	
October	40	39	
November	40	32	
December	44	42	

### Median DOM



Month	2021	2022	2023
January	29	16	27
February	21	9	14
March	8	5	8
April	7	4	7
May	6	5	
June	8	7	
July	9	9	
August	15	10	
September	23	13	
October	26	21	
November	19	15	
December	17	27	