



**June
2023**

Flint Hills MLS Statistics



**FLINT HILLS
ASSOCIATION
OF REALTORS®**

Riley County Housing Report



Market Overview

Riley County Home Sales Rose in June

Total home sales in Riley County rose by 3.5% last month to 118 units, compared to 114 units in June 2022. Total sales volume was \$33.0 million, up 8.1% from a year earlier.

The median sale price in June was \$237,450, down from \$241,500 a year earlier. Homes that sold in June were typically on the market for 6 days and sold for 100.0% of their list prices.

Riley County Active Listings Up at End of June

The total number of active listings in Riley County at the end of June was 165 units, up from 160 at the same point in 2022. This represents a 2.3 months' supply of homes available for sale. The median list price of homes on the market at the end of June was \$295,000.

During June, a total of 85 contracts were written down from 87 in June 2022. At the end of the month, there were 136 contracts still pending.

Report Contents

- Summary Statistics – Page 2
- Closed Listing Analysis – Page 3
- Active Listings Analysis – Page 7
- Months' Supply Analysis – Page 11
- New Listings Analysis – Page 12
- Contracts Written Analysis – Page 15
- Pending Contracts Analysis – Page 19

Contact Information

Margaret Pendleton, Association Executive
 Flint Hills Association of REALTORS®
 205 S. Seth Child Road
 Manhattan, KS 66502
 785-776-1203
ae@flinthillsrealtors.net
www.flinthillsrealtors.net



**June
2023**

Flint Hills MLS Statistics



**FLINT HILLS
ASSOCIATION
OF REALTORS®**

Riley County Summary Statistics

June MLS Statistics Three-year History		Current Month			Year-to-Date		
		2023	2022	2021	2023	2022	2021
Home Sales		118	114	145	377	508	551
Change from prior year		3.5%	-21.4%	17.9%	-25.8%	-7.8%	26.4%
Active Listings		165	160	172	N/A	N/A	N/A
Change from prior year		3.1%	-7.0%	-27.1%			
Months' Supply		2.3	1.7	1.9	N/A	N/A	N/A
Change from prior year		35.3%	-10.5%	-45.7%			
New Listings		90	118	170	538	670	781
Change from prior year		-23.7%	-30.6%	32.8%	-19.7%	-14.2%	14.7%
Contracts Written		85	87	114	452	558	664
Change from prior year		-2.3%	-23.7%	-3.4%	-19.0%	-16.0%	21.8%
Pending Contracts		136	169	221	N/A	N/A	N/A
Change from prior year		-19.5%	-23.5%	6.8%			
Sales Volume (1,000s)		32,956	30,496	32,258	100,847	125,896	125,228
Change from prior year		8.1%	-5.5%	16.6%	-19.9%	0.5%	37.6%
Average	Sale Price	279,285	267,511	222,470	267,499	247,826	227,273
	Change from prior year	4.4%	20.2%	-1.1%	7.9%	9.0%	8.9%
	List Price of Actives	325,850	302,934	264,539	N/A	N/A	N/A
	Change from prior year	7.6%	14.5%	-2.2%			
	Days on Market	21	14	22	30	27	40
Change from prior year	50.0%	-36.4%	-56.0%	11.1%	-32.5%	-39.4%	
	Percent of List	98.9%	100.9%	100.9%	98.9%	100.2%	99.2%
Change from prior year		-2.0%	0.0%	3.7%	-1.3%	1.0%	1.6%
	Percent of Original	98.5%	100.8%	100.5%	97.7%	99.3%	98.2%
Change from prior year		-2.3%	0.3%	4.8%	-1.6%	1.1%	3.0%
Median	Sale Price	237,450	241,500	193,000	235,000	226,000	200,000
	Change from prior year	-1.7%	25.1%	-8.1%	4.0%	13.0%	5.5%
	List Price of Actives	295,000	259,500	216,500	N/A	N/A	N/A
	Change from prior year	13.7%	19.9%	8.4%			
	Days on Market	6	4	6	8	7	9
Change from prior year	50.0%	-33.3%	-77.8%	14.3%	-22.2%	-76.3%	
	Percent of List	100.0%	100.0%	100.0%	100.0%	100.0%	100.0%
Change from prior year		0.0%	0.0%	1.9%	0.0%	0.0%	1.8%
	Percent of Original	100.0%	100.0%	100.0%	100.0%	100.0%	100.0%
Change from prior year		0.0%	0.0%	2.8%	0.0%	0.0%	2.9%

Note: Year-to-date statistics cannot be calculated for Active Listings, Months' Supply and Pending Contracts.



Riley County Closed Listings Analysis

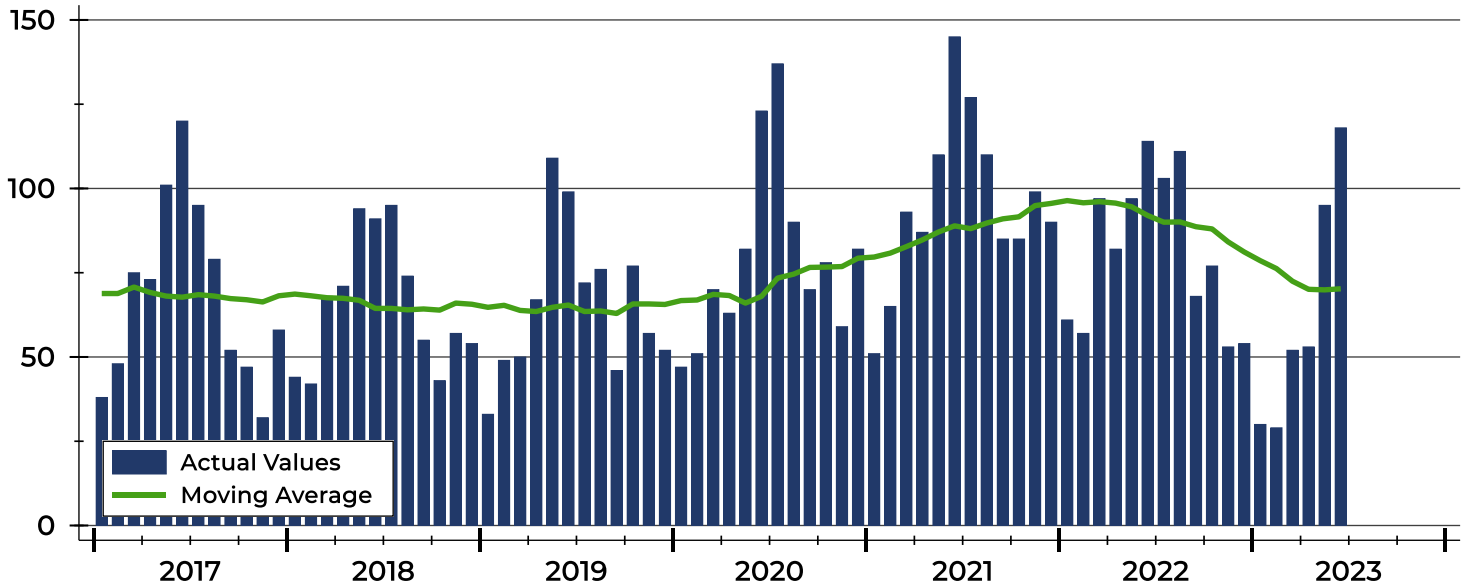
Summary Statistics for Closed Listings		2023	June 2022	Change	2023	Year-to-Date 2022	Change
Closed Listings		118	114	3.5%	377	508	-25.8%
Volume (1,000s)		32,956	30,496	8.1%	100,847	125,896	-19.9%
Months' Supply		2.3	1.7	35.3%	N/A	N/A	N/A
Average	Sale Price	279,285	267,511	4.4%	267,499	247,826	7.9%
	Days on Market	21	14	50.0%	30	27	11.1%
	Percent of List	98.9%	100.9%	-2.0%	98.9%	100.2%	-1.3%
	Percent of Original	98.5%	100.8%	-2.3%	97.7%	99.3%	-1.6%
Median	Sale Price	237,450	241,500	-1.7%	235,000	226,000	4.0%
	Days on Market	6	4	50.0%	8	7	14.3%
	Percent of List	100.0%	100.0%	0.0%	100.0%	100.0%	0.0%
	Percent of Original	100.0%	100.0%	0.0%	100.0%	100.0%	0.0%

A total of 118 homes sold in Riley County in June, up from 114 units in June 2022. Total sales volume rose to \$33.0 million compared to \$30.5 million in the previous year.

The median sales price in June was \$237,450, down 1.7% compared to the prior year. Median days on market was 6 days, the same as May, and up from 4 in June 2022.

History of Closed Listings

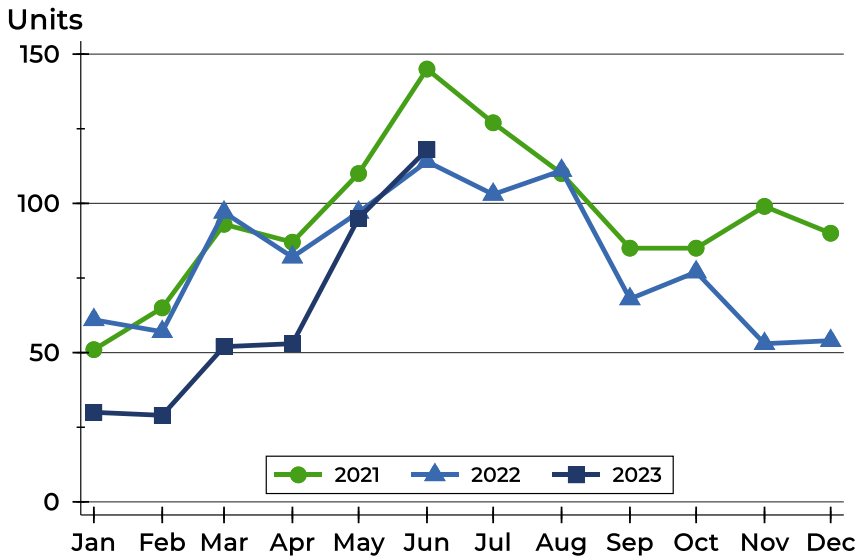
Units





Riley County Closed Listings Analysis

Closed Listings by Month



Month	2021	2022	2023
January	51	61	30
February	65	57	29
March	93	97	52
April	87	82	53
May	110	97	95
June	145	114	118
July	127	103	
August	110	111	
September	85	68	
October	85	77	
November	99	53	
December	90	54	

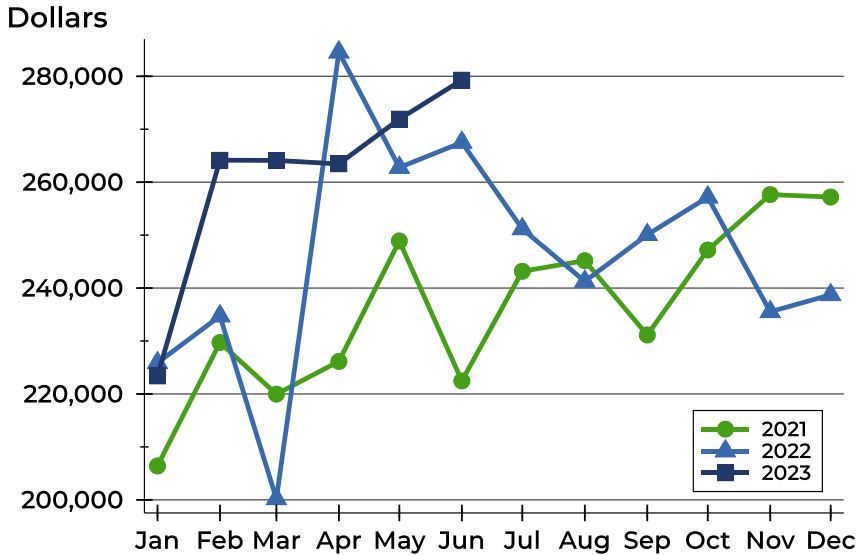
Closed Listings by Price Range

Price Range	Sales		Months' Supply	Sale Price		Days on Market		Price as % of List		Price as % of Orig.	
	Number	Percent		Average	Median	Avg.	Med.	Avg.	Med.	Avg.	Med.
Below \$25,000	0	0.0%	N/A	N/A	N/A	N/A	N/A	N/A	N/A	N/A	N/A
\$25,000-\$49,999	0	0.0%	N/A	N/A	N/A	N/A	N/A	N/A	N/A	N/A	N/A
\$50,000-\$99,999	1	0.8%	3.2	84,500	84,500	55	55	77.5%	77.5%	77.5%	77.5%
\$100,000-\$124,999	4	3.4%	4.5	112,250	112,500	22	15	92.7%	95.7%	92.7%	95.7%
\$125,000-\$149,999	5	4.2%	2.2	140,500	142,000	5	3	100.0%	100.0%	100.0%	100.0%
\$150,000-\$174,999	8	6.8%	1.1	162,500	162,250	7	4	98.9%	98.8%	98.9%	98.8%
\$175,000-\$199,999	17	14.4%	1.1	187,074	186,000	13	4	97.7%	98.7%	97.4%	98.7%
\$200,000-\$249,999	29	24.6%	1.3	223,894	223,000	14	4	99.9%	100.0%	100.1%	100.0%
\$250,000-\$299,999	14	11.9%	2.0	272,716	274,063	10	7	100.1%	100.0%	100.1%	100.0%
\$300,000-\$399,999	20	16.9%	3.3	342,162	344,000	27	7	99.4%	100.0%	98.9%	100.0%
\$400,000-\$499,999	12	10.2%	4.9	430,388	427,500	43	14	99.8%	99.6%	98.9%	99.0%
\$500,000-\$749,999	7	5.9%	3.6	588,648	580,000	54	15	99.4%	100.0%	98.9%	100.0%
\$750,000-\$999,999	1	0.8%	15.0	800,000	800,000	67	67	94.1%	94.1%	66.7%	66.7%
\$1,000,000 and up	0	0.0%	N/A	N/A	N/A	N/A	N/A	N/A	N/A	N/A	N/A



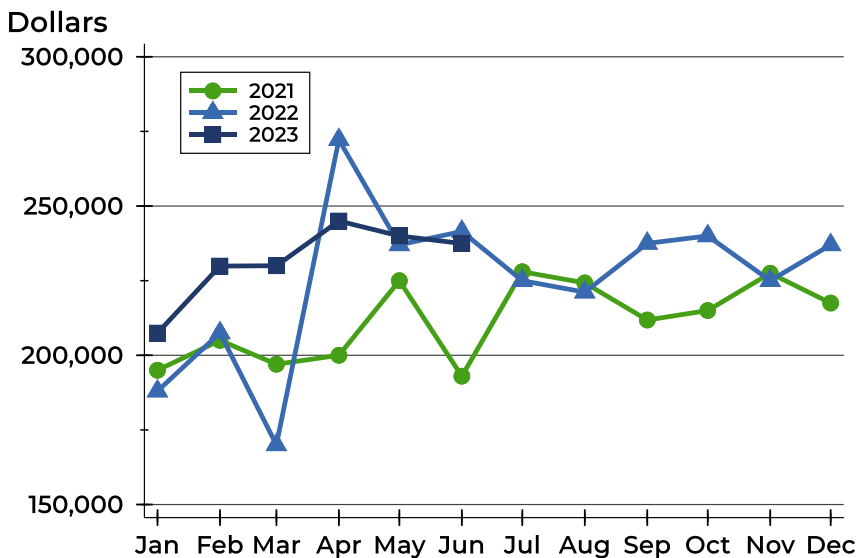
Riley County Closed Listings Analysis

Average Price



Month	2021	2022	2023
January	206,402	225,875	223,398
February	229,715	234,723	264,153
March	219,973	200,196	264,104
April	226,152	284,561	263,458
May	248,898	262,771	271,921
June	222,470	267,511	279,285
July	243,175	251,180	
August	245,172	241,275	
September	231,140	250,074	
October	247,194	257,164	
November	257,661	235,522	
December	257,195	238,726	

Median Price

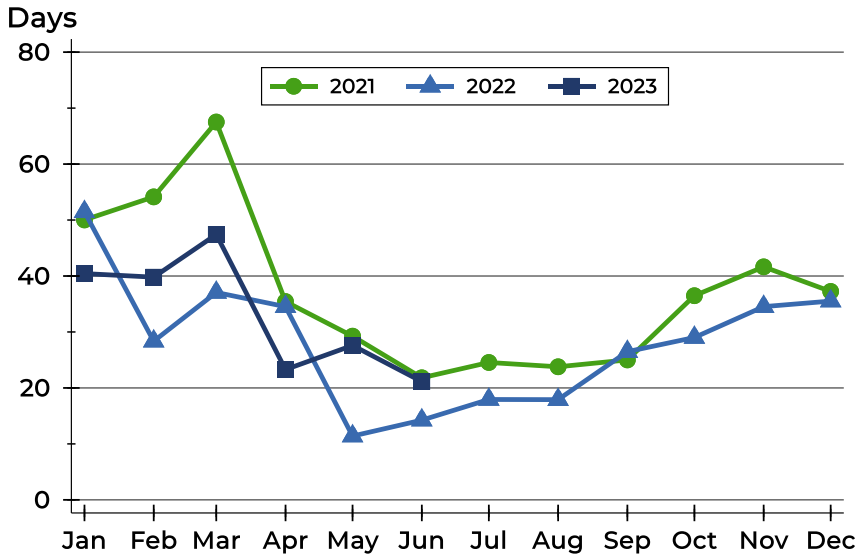


Month	2021	2022	2023
January	195,000	188,000	207,450
February	205,000	207,500	229,900
March	197,000	170,000	230,000
April	200,000	272,250	245,000
May	225,000	237,000	240,000
June	193,000	241,500	237,450
July	228,000	225,000	
August	224,250	221,159	
September	211,819	237,500	
October	215,000	240,000	
November	227,500	225,000	
December	217,500	237,000	



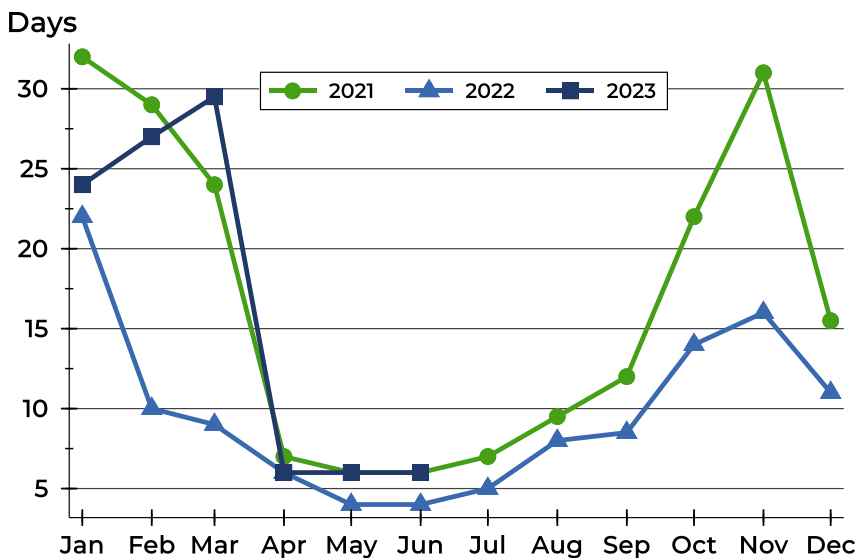
Riley County Closed Listings Analysis

Average DOM



Month	2021	2022	2023
January	50	51	40
February	54	28	40
March	68	37	47
April	35	35	23
May	29	11	28
June	22	14	21
July	25	18	
August	24	18	
September	25	26	
October	36	29	
November	42	35	
December	37	36	

Median DOM



Month	2021	2022	2023
January	32	22	24
February	29	10	27
March	24	9	30
April	7	6	6
May	6	4	6
June	6	4	6
July	7	5	
August	10	8	
September	12	9	
October	22	14	
November	31	16	
December	16	11	



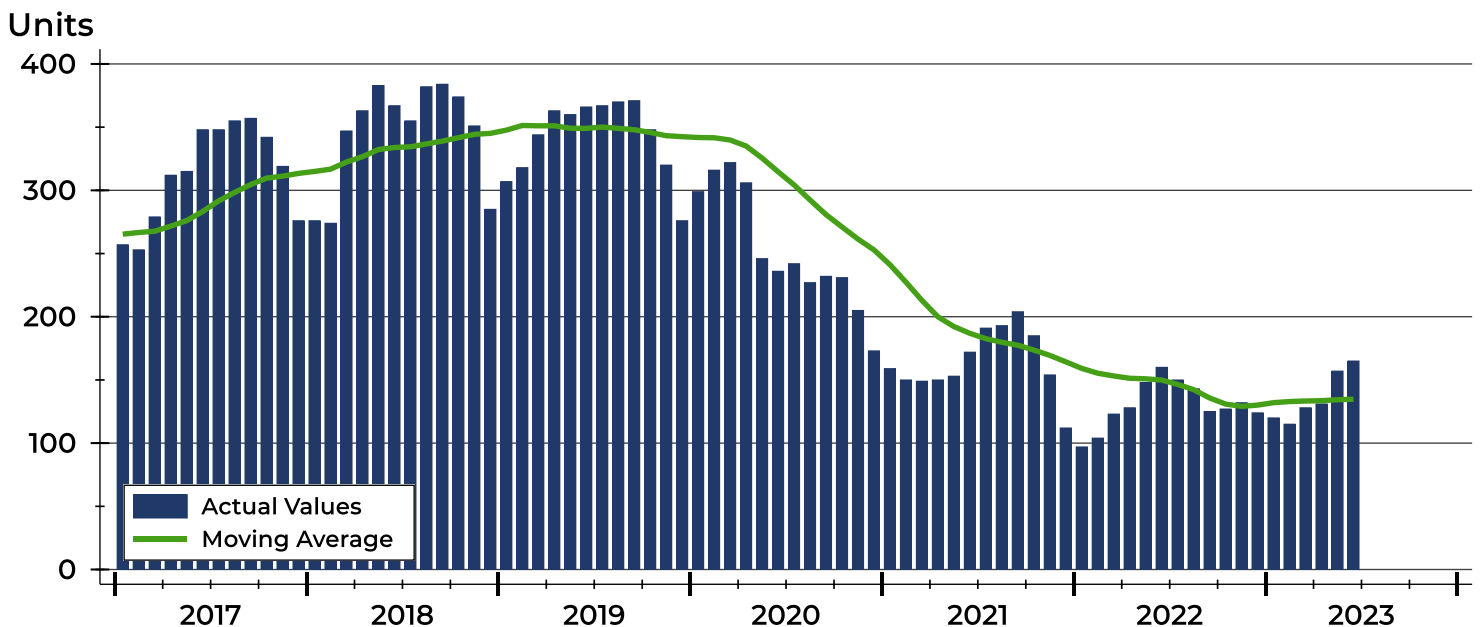
Riley County Active Listings Analysis

Summary Statistics for Active Listings		2023	End of June 2022	Change
Active Listings		165	160	3.1%
Volume (1,000s)		53,765	48,469	10.9%
Months' Supply		2.3	1.7	35.3%
Average	List Price	325,850	302,934	7.6%
	Days on Market	72	58	24.1%
	Percent of Original	97.7%	97.9%	-0.2%
Median	List Price	295,000	259,500	13.7%
	Days on Market	54	33	63.6%
	Percent of Original	100.0%	100.0%	0.0%

A total of 165 homes were available for sale in Riley County at the end of June. This represents a 2.3 months' supply of active listings.

The median list price of homes on the market at the end of June was \$295,000, up 13.7% from 2022. The typical time on market for active listings was 54 days, up from 33 days a year earlier.

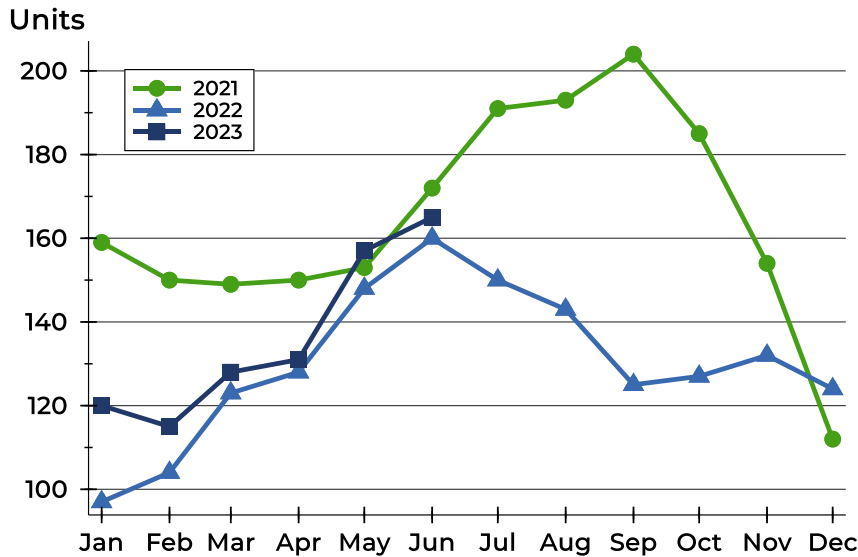
History of Active Listings





Riley County Active Listings Analysis

Active Listings by Month



Month	2021	2022	2023
January	159	97	120
February	150	104	115
March	149	123	128
April	150	128	131
May	153	148	157
June	172	160	165
July	191	150	
August	193	143	
September	204	125	
October	185	127	
November	154	132	
December	112	124	

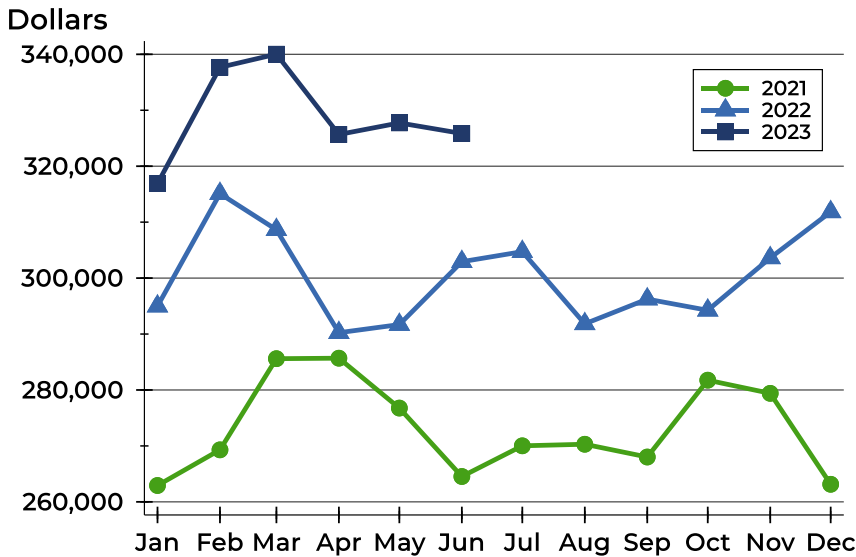
Active Listings by Price Range

Price Range	Active Listings		Months' Supply	List Price		Days on Market		Price as % of Orig.	
	Number	Percent		Average	Median	Avg.	Med.	Avg.	Med.
Below \$25,000	0	0.0%	N/A	N/A	N/A	N/A	N/A	N/A	N/A
\$25,000-\$49,999	0	0.0%	N/A	N/A	N/A	N/A	N/A	N/A	N/A
\$50,000-\$99,999	5	3.0%	3.2	86,960	92,500	94	86	92.9%	100.0%
\$100,000-\$124,999	15	9.1%	4.5	115,853	115,000	71	85	97.7%	100.0%
\$125,000-\$149,999	7	4.2%	2.2	135,700	135,000	80	68	98.4%	100.0%
\$150,000-\$174,999	9	5.5%	1.1	165,211	169,000	51	17	96.7%	100.0%
\$175,000-\$199,999	9	5.5%	1.1	188,278	185,000	46	18	97.9%	100.0%
\$200,000-\$249,999	20	12.1%	1.3	230,715	232,500	59	27	98.5%	100.0%
\$250,000-\$299,999	20	12.1%	2.0	276,940	279,450	54	48	97.7%	100.0%
\$300,000-\$399,999	42	25.5%	3.3	363,139	365,000	62	44	97.7%	100.0%
\$400,000-\$499,999	21	12.7%	4.9	447,665	445,000	97	50	98.0%	100.0%
\$500,000-\$749,999	10	6.1%	3.6	584,748	569,500	54	42	98.6%	100.0%
\$750,000-\$999,999	5	3.0%	15.0	871,580	895,000	208	146	94.4%	98.0%
\$1,000,000 and up	2	1.2%	N/A	1,225,000	1,225,000	176	176	100.0%	100.0%



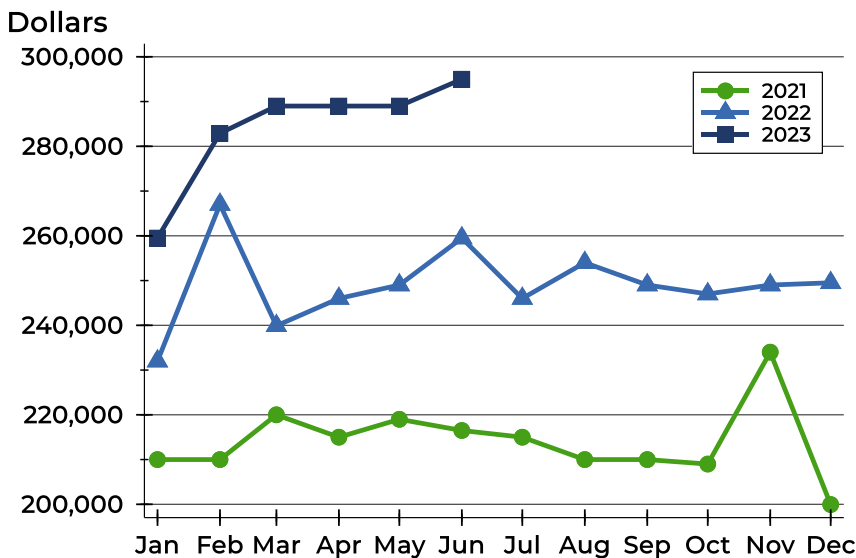
Riley County Active Listings Analysis

Average Price



Month	2021	2022	2023
January	262,929	294,980	316,889
February	269,299	315,098	337,680
March	285,597	308,649	340,031
April	285,687	290,244	325,675
May	276,770	291,693	327,740
June	264,539	302,934	325,850
July	270,021	304,729	
August	270,304	291,827	
September	268,017	296,245	
October	281,756	294,245	
November	279,402	303,615	
December	263,144	311,834	

Median Price

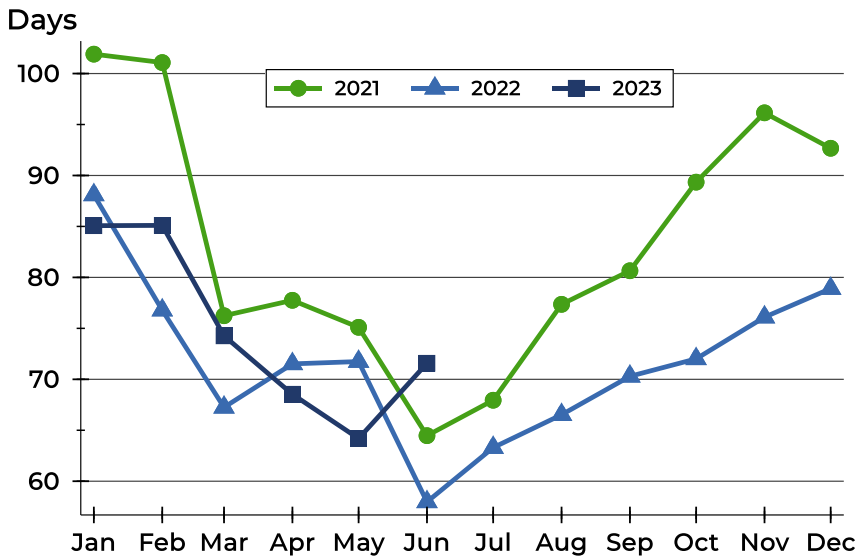


Month	2021	2022	2023
January	210,000	232,000	259,500
February	210,000	267,000	282,900
March	220,000	239,900	289,000
April	215,000	246,000	289,000
May	219,000	249,000	289,000
June	216,500	259,500	295,000
July	215,000	246,000	
August	210,000	254,000	
September	210,000	249,000	
October	209,000	247,000	
November	234,000	249,000	
December	199,950	249,500	



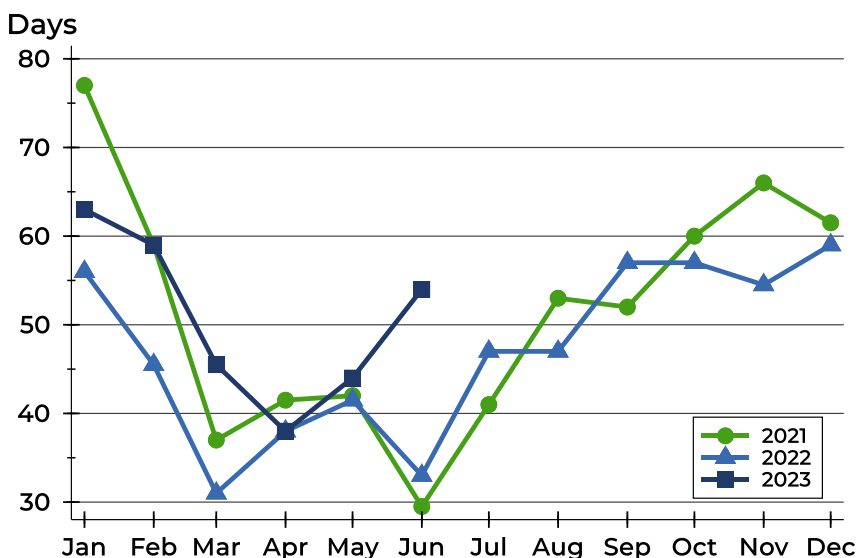
Riley County Active Listings Analysis

Average DOM



Month	2021	2022	2023
January	102	88	85
February	101	77	85
March	76	67	74
April	78	72	69
May	75	72	64
June	64	58	72
July	68	63	
August	77	67	
September	81	70	
October	89	72	
November	96	76	
December	93	79	

Median DOM

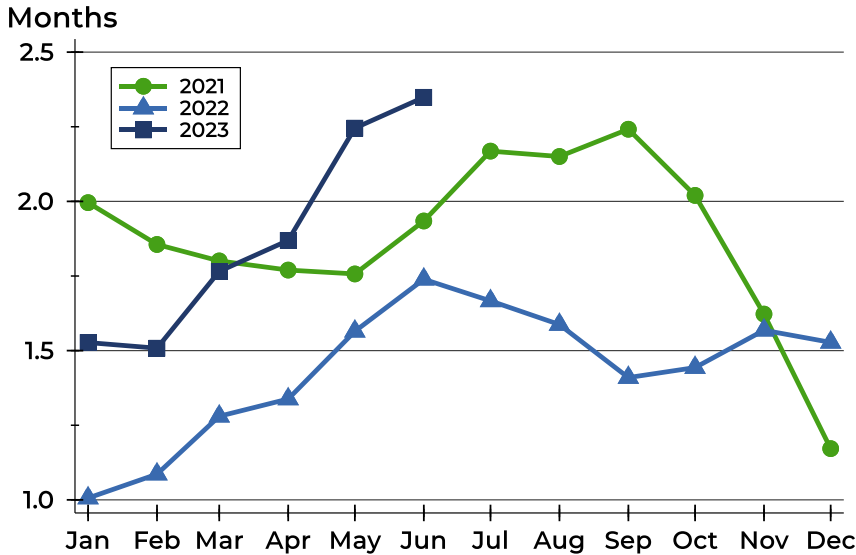


Month	2021	2022	2023
January	77	56	63
February	59	46	59
March	37	31	46
April	42	38	38
May	42	42	44
June	30	33	54
July	41	47	
August	53	47	
September	52	57	
October	60	57	
November	66	55	
December	62	59	



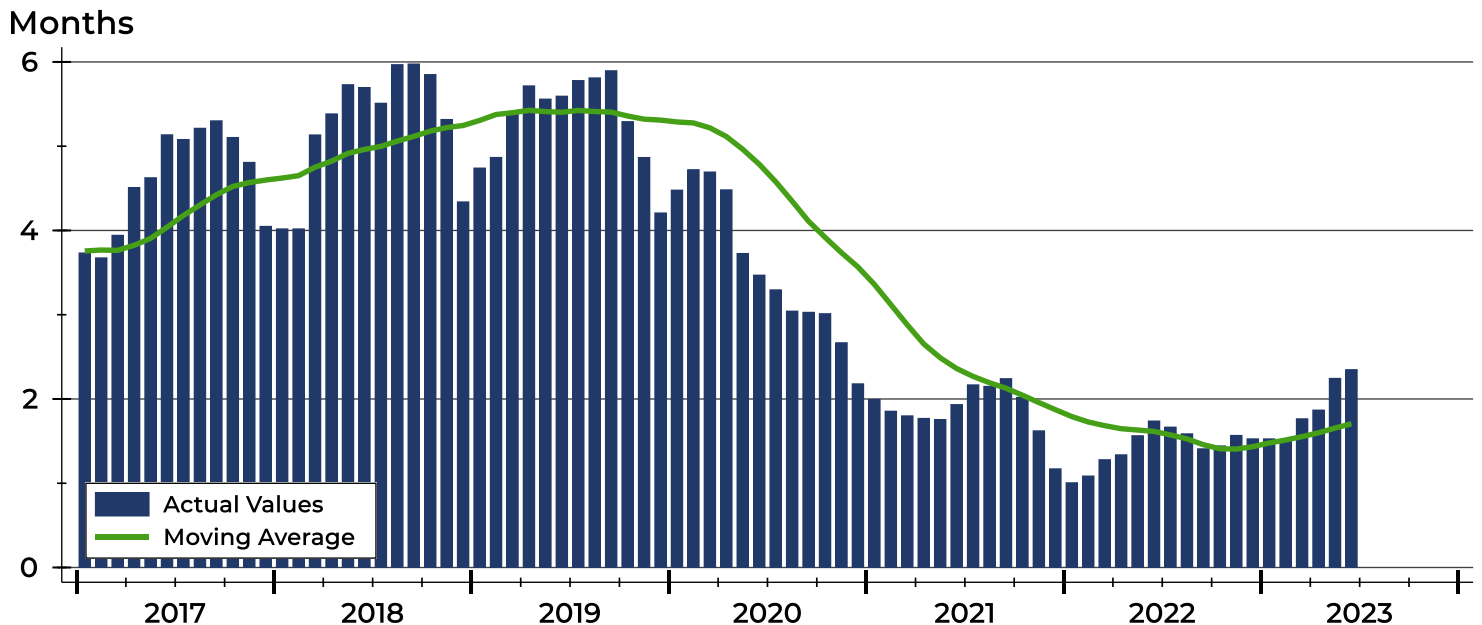
Riley County Months' Supply Analysis

Months' Supply by Month



Month	2021	2022	2023
January	2.0	1.0	1.5
February	1.9	1.1	1.5
March	1.8	1.3	1.8
April	1.8	1.3	1.9
May	1.8	1.6	2.2
June	1.9	1.7	2.3
July	2.2	1.7	
August	2.2	1.6	
September	2.2	1.4	
October	2.0	1.4	
November	1.6	1.6	
December	1.2	1.5	

History of Month's Supply





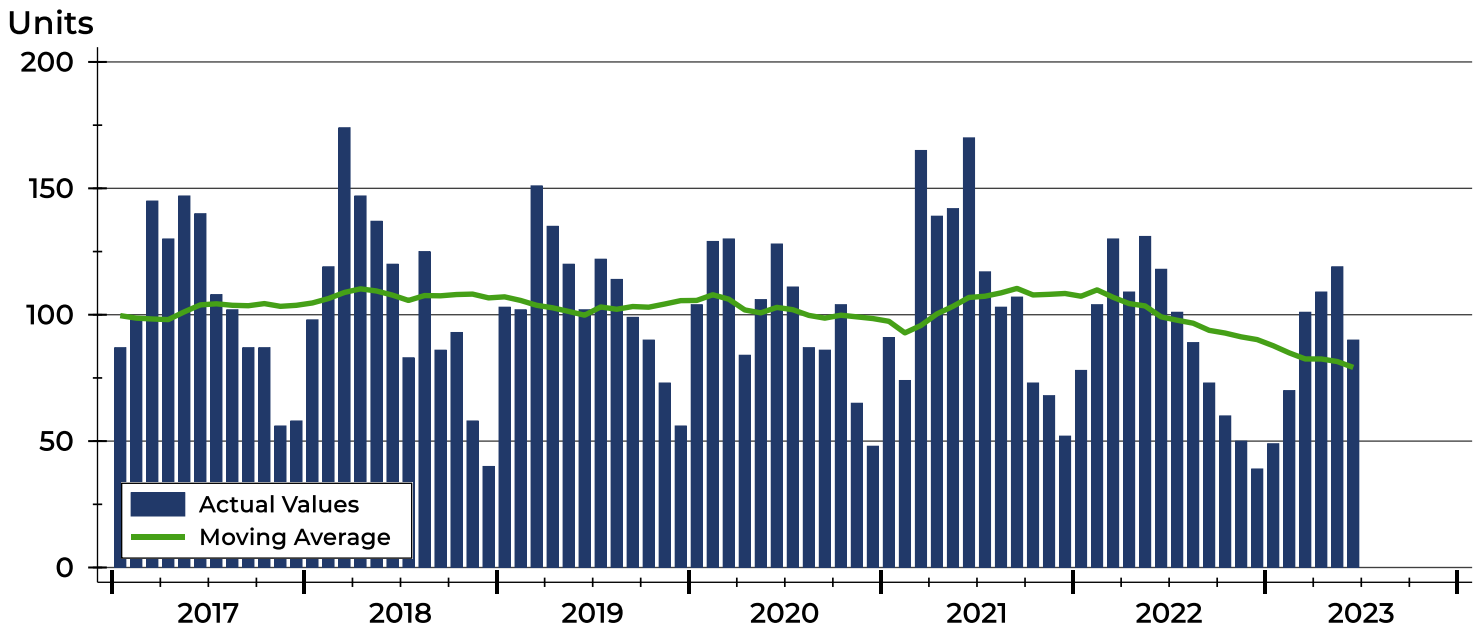
Riley County New Listings Analysis

Summary Statistics for New Listings		2023	June 2022	Change
Current Month	New Listings	90	118	-23.7%
	Volume (1,000s)	28,302	31,649	-10.6%
	Average List Price	314,471	268,215	17.2%
	Median List Price	292,950	249,500	17.4%
Year-to-Date	New Listings	538	670	-19.7%
	Volume (1,000s)	157,587	175,664	-10.3%
	Average List Price	292,913	262,186	11.7%
	Median List Price	265,000	238,450	11.1%

A total of 90 new listings were added in Riley County during June, down 23.7% from the same month in 2022. Year-to-date Riley County has seen 538 new listings.

The median list price of these homes was \$292,950 up from \$249,500 in 2022.

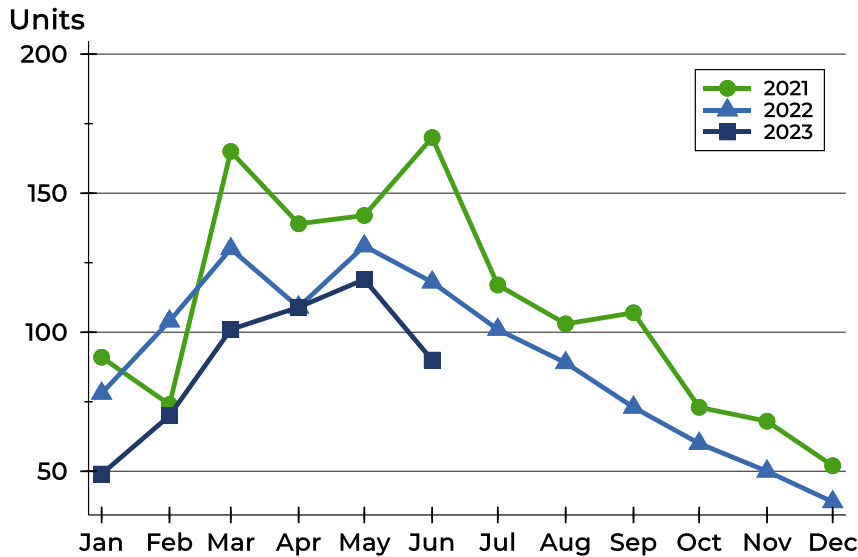
History of New Listings





Riley County New Listings Analysis

New Listings by Month



Month	2021	2022	2023
January	91	78	49
February	74	104	70
March	165	130	101
April	139	109	109
May	142	131	119
June	170	118	90
July	117	101	
August	103	89	
September	107	73	
October	73	60	
November	68	50	
December	52	39	

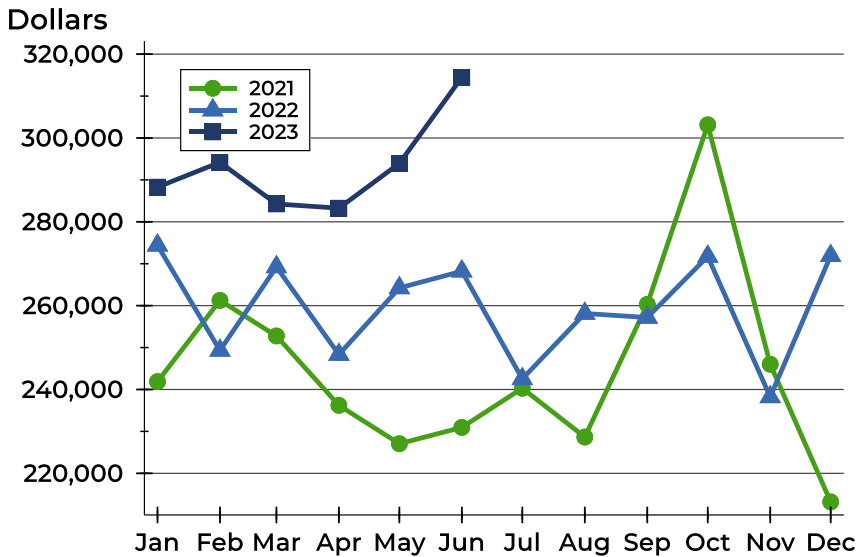
New Listings by Price Range

Price Range	New Listings		List Price		Days on Market		Price as % of Orig.	
	Number	Percent	Average	Median	Avg.	Med.	Avg.	Med.
Below \$25,000	0	0.0%	N/A	N/A	N/A	N/A	N/A	N/A
\$25,000-\$49,999	0	0.0%	N/A	N/A	N/A	N/A	N/A	N/A
\$50,000-\$99,999	0	0.0%	N/A	N/A	N/A	N/A	N/A	N/A
\$100,000-\$124,999	0	0.0%	N/A	N/A	N/A	N/A	N/A	N/A
\$125,000-\$149,999	2	2.2%	140,000	140,000	5	5	100.0%	100.0%
\$150,000-\$174,999	6	6.7%	162,333	162,500	11	9	100.3%	100.0%
\$175,000-\$199,999	9	10.0%	185,556	186,000	8	5	98.7%	100.0%
\$200,000-\$249,999	19	21.1%	231,529	234,900	14	11	99.4%	100.0%
\$250,000-\$299,999	15	16.7%	282,420	289,000	12	9	98.9%	100.0%
\$300,000-\$399,999	22	24.4%	356,039	348,950	13	11	99.7%	100.0%
\$400,000-\$499,999	11	12.2%	470,972	489,000	15	11	97.9%	100.0%
\$500,000-\$749,999	5	5.6%	586,900	584,900	15	11	100.0%	100.0%
\$750,000-\$999,999	1	1.1%	795,000	795,000	6	6	100.0%	100.0%
\$1,000,000 and up	0	0.0%	N/A	N/A	N/A	N/A	N/A	N/A



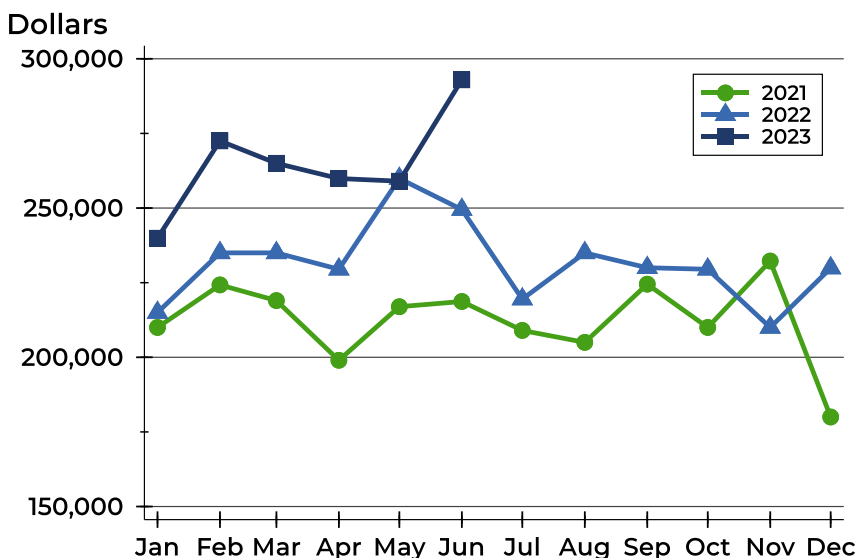
Riley County New Listings Analysis

Average Price



Month	2021	2022	2023
January	241,888	274,397	288,280
February	261,254	249,317	294,191
March	252,772	269,234	284,264
April	236,225	248,339	283,258
May	227,067	264,226	293,948
June	230,952	268,215	314,471
July	240,298	242,536	
August	228,658	258,135	
September	260,308	257,179	
October	303,145	271,739	
November	246,026	238,235	
December	213,190	271,909	

Median Price



Month	2021	2022	2023
January	210,000	215,000	239,900
February	224,250	235,000	272,500
March	219,000	235,000	265,000
April	199,000	229,500	259,900
May	216,950	259,900	259,000
June	218,700	249,500	292,950
July	209,000	219,500	
August	205,000	235,000	
September	224,500	230,000	
October	209,999	229,500	
November	232,250	210,000	
December	180,000	229,900	



**June
2023**

Flint Hills MLS Statistics



**FLINT HILLS
ASSOCIATION
OF REALTORS®**

Riley County Contracts Written Analysis

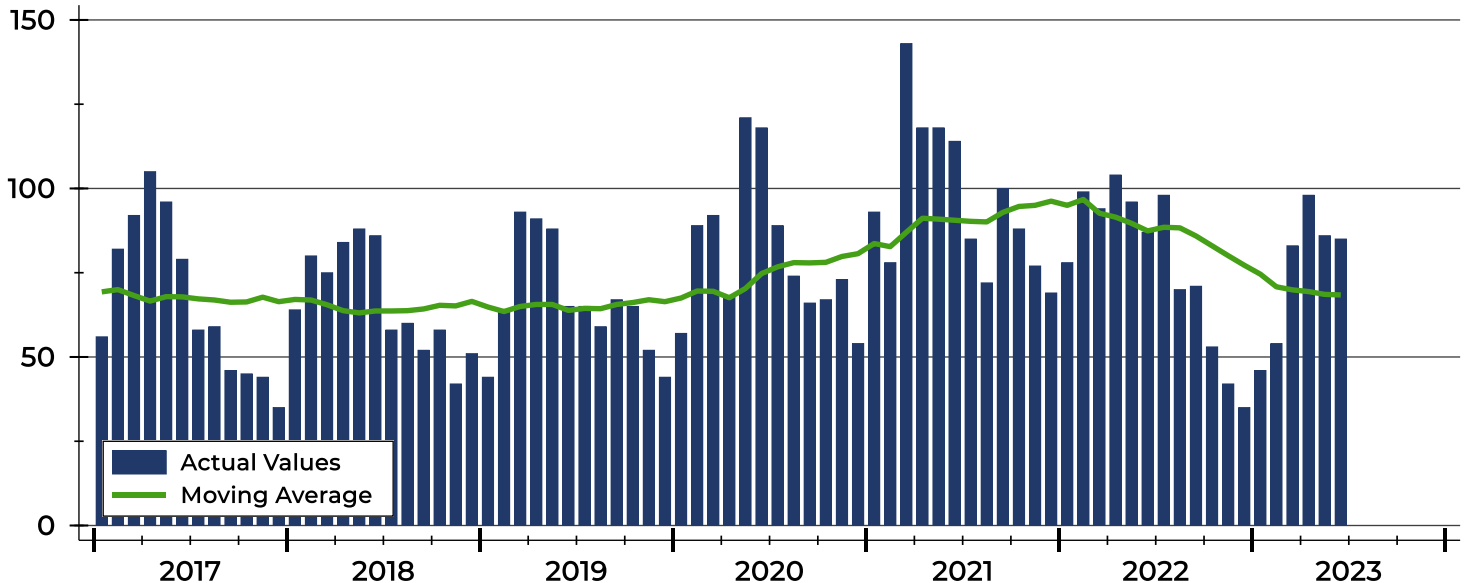
Summary Statistics for Contracts Written		2023	June 2022	Change	2023	Year-to-Date 2022	Change
Contracts Written		85	87	-2.3%	452	558	-19.0%
Volume (1,000s)		25,687	21,336	20.4%	128,201	138,367	-7.3%
Average	Sale Price	302,206	245,241	23.2%	283,630	247,970	14.4%
	Days on Market	23	20	15.0%	27	22	22.7%
	Percent of Original	98.3%	99.0%	-0.7%	98.2%	99.8%	-1.6%
Median	Sale Price	277,500	220,000	26.1%	248,750	225,000	10.6%
	Days on Market	8	8	0.0%	8	6	33.3%
	Percent of Original	100.0%	100.0%	0.0%	100.0%	100.0%	0.0%

A total of 85 contracts for sale were written in Riley County during the month of June, down from 87 in 2022. The median list price of these homes was \$277,500, up from \$220,000 the prior year.

Half of the homes that went under contract in June were on the market less than 8 days, compared to 8 days in June 2022.

History of Contracts Written

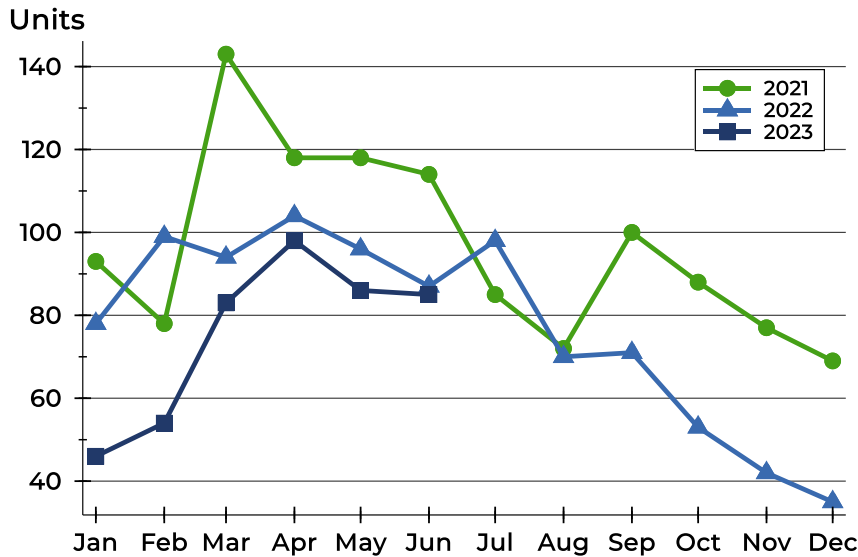
Units





Riley County Contracts Written Analysis

Contracts Written by Month



Month	2021	2022	2023
January	93	78	46
February	78	99	54
March	143	94	83
April	118	104	98
May	118	96	86
June	114	87	85
July	85	98	
August	72	70	
September	100	71	
October	88	53	
November	77	42	
December	69	35	

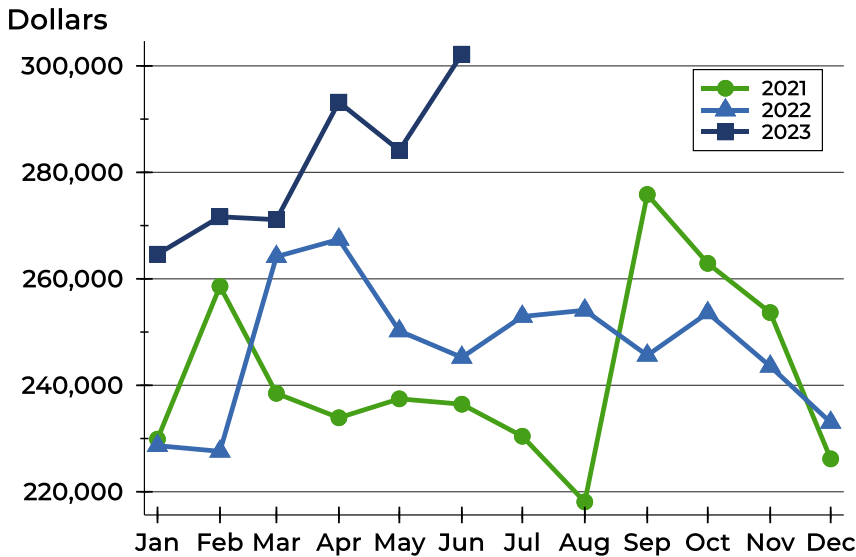
Contracts Written by Price Range

Price Range	Contracts Written		List Price		Days on Market		Price as % of Orig.	
	Number	Percent	Average	Median	Avg.	Med.	Avg.	Med.
Below \$25,000	0	0.0%	N/A	N/A	N/A	N/A	N/A	N/A
\$25,000-\$49,999	0	0.0%	N/A	N/A	N/A	N/A	N/A	N/A
\$50,000-\$99,999	0	0.0%	N/A	N/A	N/A	N/A	N/A	N/A
\$100,000-\$124,999	2	2.4%	114,250	114,250	73	73	88.8%	88.8%
\$125,000-\$149,999	3	3.5%	142,967	144,900	51	64	100.0%	100.0%
\$150,000-\$174,999	5	5.9%	164,180	165,000	6	5	99.8%	100.0%
\$175,000-\$199,999	10	11.8%	187,680	190,500	19	6	99.3%	100.0%
\$200,000-\$249,999	17	20.0%	229,768	229,900	15	5	98.3%	100.0%
\$250,000-\$299,999	14	16.5%	283,807	282,750	16	4	99.2%	100.0%
\$300,000-\$399,999	21	24.7%	351,498	349,900	29	21	98.6%	100.0%
\$400,000-\$499,999	8	9.4%	465,236	477,500	32	17	95.9%	100.0%
\$500,000-\$749,999	4	4.7%	638,675	634,901	19	8	98.2%	100.0%
\$750,000-\$999,999	1	1.2%	795,000	795,000	6	6	100.0%	100.0%
\$1,000,000 and up	0	0.0%	N/A	N/A	N/A	N/A	N/A	N/A



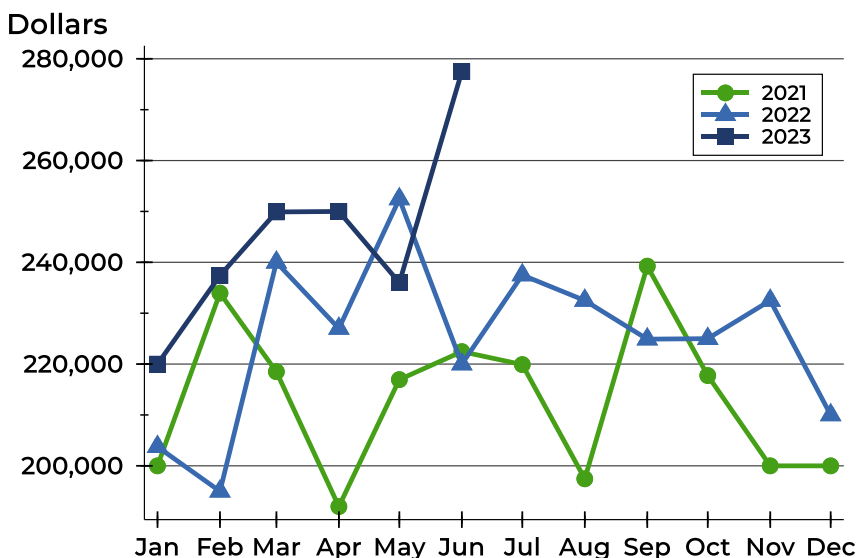
Riley County Contracts Written Analysis

Average Price



Month	2021	2022	2023
January	229,883	228,668	264,630
February	258,609	227,600	271,664
March	238,500	264,169	271,114
April	233,899	267,411	293,193
May	237,460	250,209	284,125
June	236,450	245,241	302,206
July	230,434	252,925	
August	218,103	254,097	
September	275,842	245,622	
October	262,907	253,600	
November	253,665	243,560	
December	226,182	233,020	

Median Price

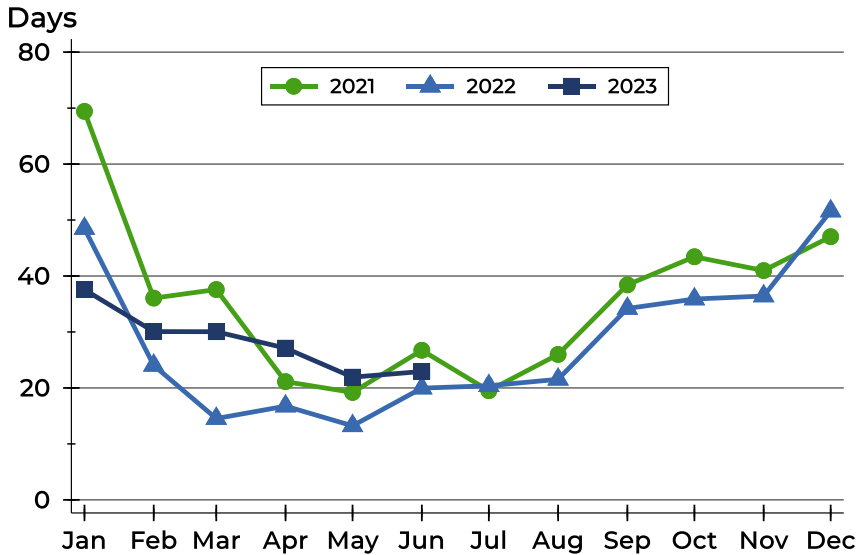


Month	2021	2022	2023
January	200,000	203,750	220,000
February	233,950	195,000	237,400
March	218,500	240,000	249,900
April	192,000	227,000	250,000
May	216,950	252,450	236,000
June	222,450	220,000	277,500
July	219,900	237,500	
August	197,450	232,500	
September	239,250	224,900	
October	217,750	225,000	
November	200,000	232,500	
December	200,000	210,000	



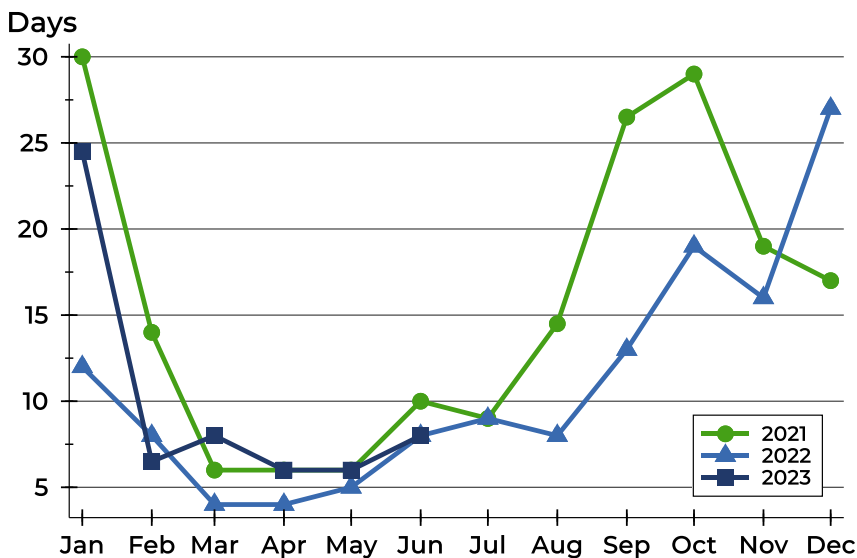
Riley County Contracts Written Analysis

Average DOM



Month	2021	2022	2023
January	69	48	38
February	36	24	30
March	38	15	30
April	21	17	27
May	19	13	22
June	27	20	23
July	20	20	
August	26	22	
September	38	34	
October	43	36	
November	41	36	
December	47	52	

Median DOM



Month	2021	2022	2023
January	30	12	25
February	14	8	7
March	6	4	8
April	6	4	6
May	6	5	6
June	10	8	8
July	9	9	
August	15	8	
September	27	13	
October	29	19	
November	19	16	
December	17	27	



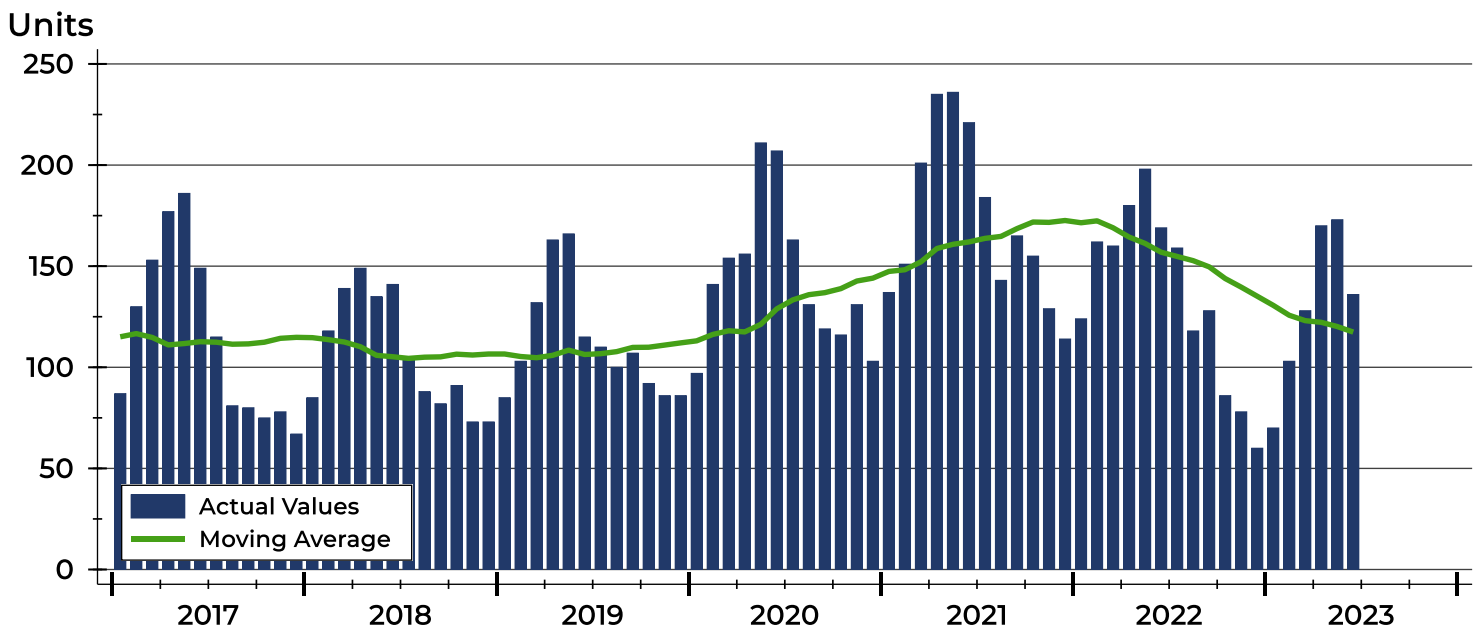
Riley County Pending Contracts Analysis

Summary Statistics for Pending Contracts		2023	End of June 2022	Change
Pending Contracts		136	169	-19.5%
Volume (1,000s)		41,046	43,999	-6.7%
Average	List Price	301,809	260,348	15.9%
	Days on Market	28	18	55.6%
	Percent of Original	99.0%	99.3%	-0.3%
Median	List Price	272,500	239,900	13.6%
	Days on Market	9	7	28.6%
	Percent of Original	100.0%	100.0%	0.0%

A total of 136 listings in Riley County had contracts pending at the end of June, down from 169 contracts pending at the end of June 2022.

Pending contracts reflect listings with a contract in place at the end of the month. In contrast, contracts written measures the number of listings put under contract during the month.

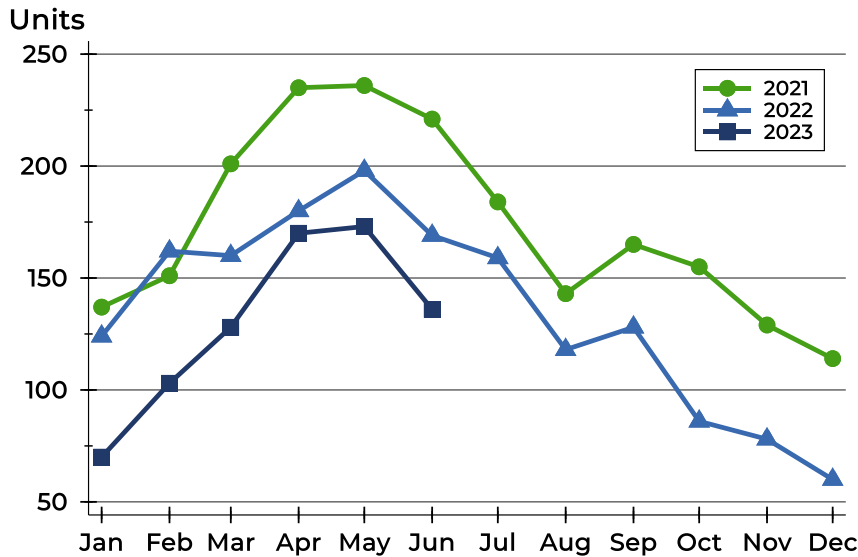
History of Pending Contracts





Riley County Pending Contracts Analysis

Pending Contracts by Month



Month	2021	2022	2023
January	137	124	70
February	151	162	103
March	201	160	128
April	235	180	170
May	236	198	173
June	221	169	136
July	184	159	
August	143	118	
September	165	128	
October	155	86	
November	129	78	
December	114	60	

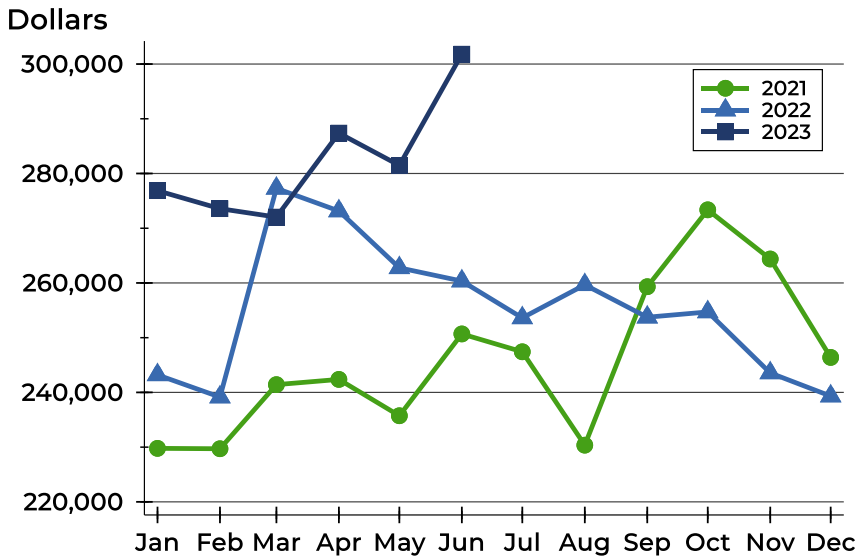
Pending Contracts by Price Range

Price Range	Pending Contracts		List Price		Days on Market		Price as % of Orig.	
	Number	Percent	Average	Median	Avg.	Med.	Avg.	Med.
Below \$25,000	0	0.0%	N/A	N/A	N/A	N/A	N/A	N/A
\$25,000-\$49,999	0	0.0%	N/A	N/A	N/A	N/A	N/A	N/A
\$50,000-\$99,999	0	0.0%	N/A	N/A	N/A	N/A	N/A	N/A
\$100,000-\$124,999	5	3.7%	116,700	119,500	31	8	100.0%	100.0%
\$125,000-\$149,999	9	6.6%	138,400	140,000	34	22	100.0%	100.0%
\$150,000-\$174,999	7	5.1%	166,414	165,000	9	5	100.4%	100.0%
\$175,000-\$199,999	17	12.5%	185,924	189,000	23	6	100.1%	100.0%
\$200,000-\$249,999	21	15.4%	230,202	229,900	19	6	99.7%	100.0%
\$250,000-\$299,999	24	17.6%	278,608	276,250	12	5	99.1%	100.0%
\$300,000-\$399,999	31	22.8%	342,942	332,500	39	21	97.8%	100.0%
\$400,000-\$499,999	11	8.1%	472,910	479,900	34	15	98.7%	100.0%
\$500,000-\$749,999	8	5.9%	625,275	627,450	64	34	98.6%	100.0%
\$750,000-\$999,999	3	2.2%	845,000	795,000	45	54	94.2%	100.0%
\$1,000,000 and up	0	0.0%	N/A	N/A	N/A	N/A	N/A	N/A



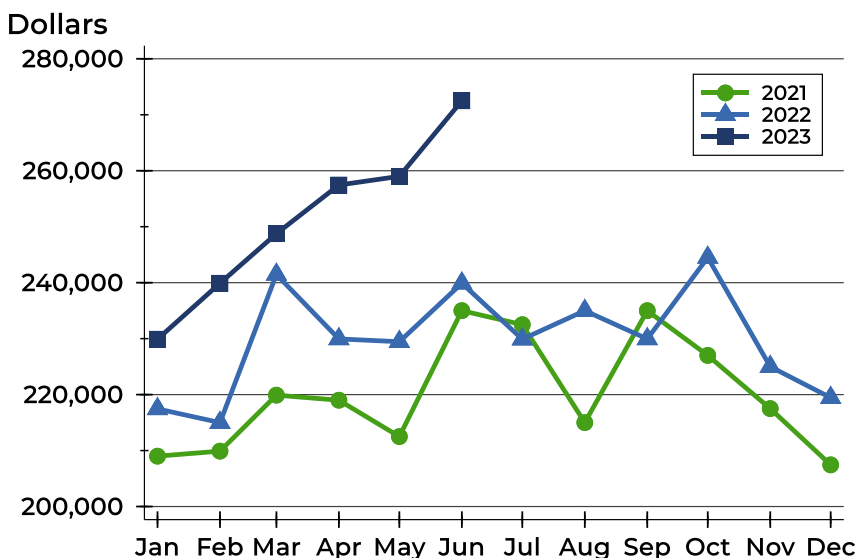
Riley County Pending Contracts Analysis

Average Price



Month	2021	2022	2023
January	229,781	243,204	276,864
February	229,712	239,149	273,576
March	241,420	277,287	272,038
April	242,377	273,152	287,381
May	235,738	262,768	281,480
June	250,688	260,348	301,809
July	247,424	253,615	
August	230,364	259,667	
September	259,319	253,740	
October	273,363	254,702	
November	264,377	243,560	
December	246,398	239,327	

Median Price

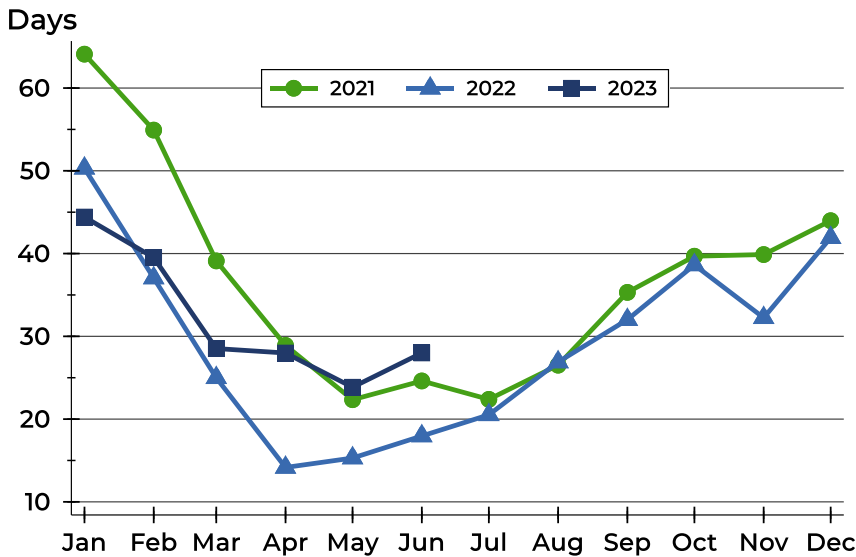


Month	2021	2022	2023
January	209,000	217,450	229,900
February	209,900	215,000	239,900
March	219,900	241,460	248,750
April	219,000	229,950	257,450
May	212,500	229,450	259,000
June	235,000	239,900	272,500
July	232,500	229,900	
August	215,000	235,000	
September	235,000	229,950	
October	227,000	244,500	
November	217,500	225,000	
December	207,450	219,450	



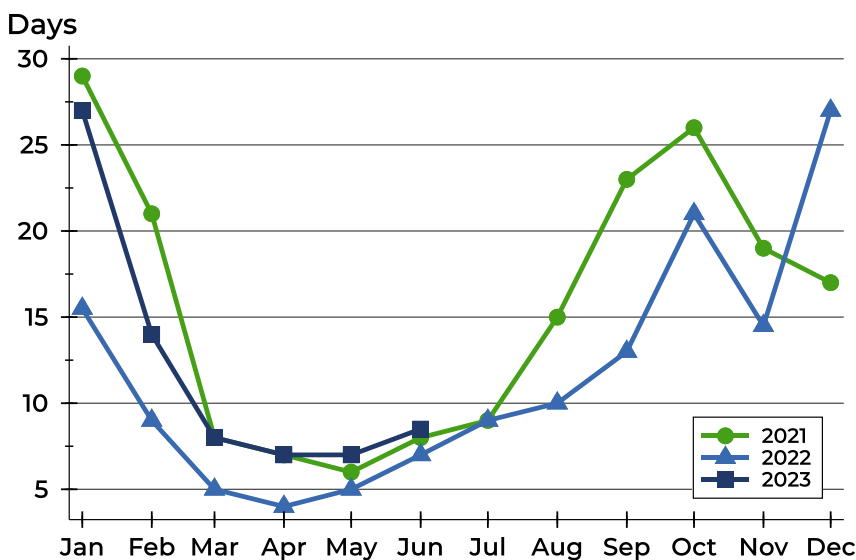
Riley County Pending Contracts Analysis

Average DOM



Month	2021	2022	2023
January	64	50	44
February	55	37	40
March	39	25	29
April	29	14	28
May	22	15	24
June	25	18	28
July	22	21	
August	27	27	
September	35	32	
October	40	39	
November	40	32	
December	44	42	

Median DOM



Month	2021	2022	2023
January	29	16	27
February	21	9	14
March	8	5	8
April	7	4	7
May	6	5	7
June	8	7	9
July	9	9	
August	15	10	
September	23	13	
October	26	21	
November	19	15	
December	17	27	