



**October
2024**

Flint Hills MLS Statistics



**FLINT HILLS
ASSOCIATION
OF REALTORS®**

Riley County Housing Report



Market Overview

Riley County Home Sales Fell in October

Total home sales in Riley County fell last month to 53 units, compared to 68 units in October 2023. Total sales volume was \$16.8 million, down from a year earlier.

The median sale price in October was \$281,500, down from \$304,500 a year earlier. Homes that sold in October were typically on the market for 13 days and sold for 100.0% of their list prices.

Riley County Active Listings Up at End of October

The total number of active listings in Riley County at the end of October was 164 units, up from 142 at the same point in 2023. This represents a 2.5 months' supply of homes available for sale. The median list price of homes on the market at the end of October was \$283,900.

During October, a total of 66 contracts were written up from 54 in October 2023. At the end of the month, there were 86 contracts still pending.

Report Contents

- Summary Statistics – Page 2
- Closed Listing Analysis – Page 3
- Active Listings Analysis – Page 7
- Months' Supply Analysis – Page 11
- New Listings Analysis – Page 12
- Contracts Written Analysis – Page 15
- Pending Contracts Analysis – Page 19

Contact Information

Margaret Pendleton, Association Executive
 Flint Hills Association of REALTORS®
 205 S. Seth Child Road
 Manhattan, KS 66502
 785-776-1203
ae@flinthillsrealtors.net
www.flinthillsrealtors.net



**October
2024**

Flint Hills MLS Statistics



**FLINT HILLS
ASSOCIATION
OF REALTORS®**

Riley County Summary Statistics

October MLS Statistics Three-year History		Current Month			Year-to-Date		
		2024	2023	2022	2024	2023	2022
Home Sales		53	68	77	700	693	867
Change from prior year		-22.1%	-11.7%	-9.4%	1.0%	-20.1%	-9.5%
Active Listings		164	142	127	N/A	N/A	N/A
Change from prior year		15.5%	11.8%	-31.4%			
Months' Supply		2.5	2.1	1.4	N/A	N/A	N/A
Change from prior year		19.0%	50.0%	-30.0%			
New Listings		76	64	60	881	843	993
Change from prior year		18.8%	6.7%	-17.8%	4.5%	-15.1%	-15.9%
Contracts Written		66	54	53	712	722	850
Change from prior year		22.2%	1.9%	-39.8%	-1.4%	-15.1%	-15.8%
Pending Contracts		86	75	86	N/A	N/A	N/A
Change from prior year		14.7%	-12.8%	-44.5%			
Sales Volume (1,000s)		16,803	21,522	19,802	200,270	193,602	215,355
Change from prior year		-21.9%	8.7%	-5.8%	3.4%	-10.1%	-3.7%
Average	Sale Price	317,039	316,505	257,164	286,101	279,368	248,391
	Change from prior year	0.2%	23.1%	4.0%	2.4%	12.5%	6.4%
	List Price of Actives	326,126	302,591	294,245	N/A	N/A	N/A
	Change from prior year	7.8%	2.8%	4.4%			
	Days on Market	23	41	29	38	31	25
Change from prior year	-43.9%	41.4%	-19.4%	22.6%	24.0%	-26.5%	
Percent of List	97.1%	98.2%	97.4%	98.6%	98.8%	99.6%	
Change from prior year	-1.1%	0.8%	-0.8%	-0.2%	-0.8%	0.4%	
Percent of Original	96.4%	96.8%	95.9%	97.6%	97.6%	98.6%	
Change from prior year	-0.4%	0.9%	-0.3%	0.0%	-1.0%	0.3%	
Median	Sale Price	281,500	304,500	240,000	257,500	245,000	228,000
	Change from prior year	-7.6%	26.9%	11.6%	5.1%	7.5%	8.4%
	List Price of Actives	283,900	264,500	247,000	N/A	N/A	N/A
	Change from prior year	7.3%	7.1%	18.2%			
	Days on Market	13	21	14	12	9	7
Change from prior year	-38.1%	50.0%	-36.4%	33.3%	28.6%	-30.0%	
Percent of List	100.0%	100.0%	98.1%	100.0%	100.0%	100.0%	
Change from prior year	0.0%	1.9%	-1.9%	0.0%	0.0%	0.0%	
Percent of Original	99.7%	99.7%	97.4%	98.9%	99.8%	100.0%	
Change from prior year	0.0%	2.4%	-1.6%	-0.9%	-0.2%	0.0%	

Note: Year-to-date statistics cannot be calculated for Active Listings, Months' Supply and Pending Contracts.



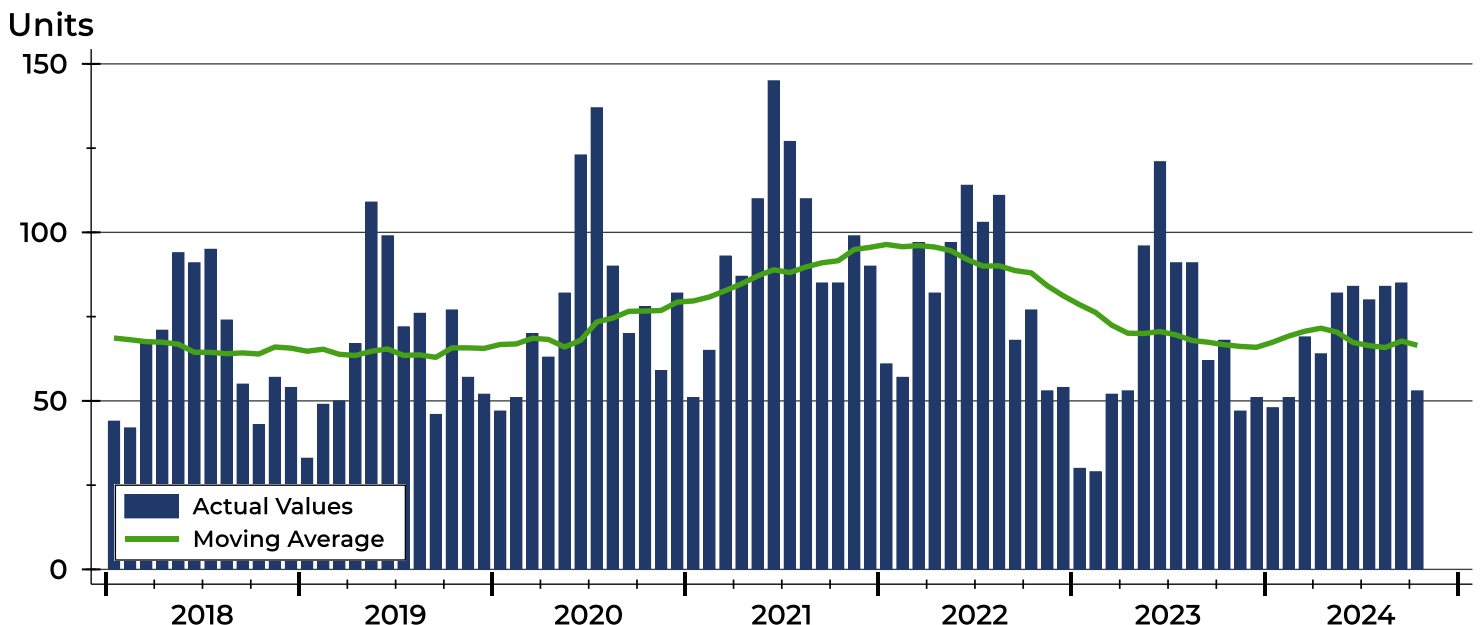
Riley County Closed Listings Analysis

Summary Statistics for Closed Listings		2024	October 2023	Change	2024	Year-to-Date 2023	Change
Closed Listings		53	68	-22.1%	700	693	1.0%
Volume (1,000s)		16,803	21,522	-21.9%	200,270	193,602	3.4%
Months' Supply		2.5	2.1	19.0%	N/A	N/A	N/A
Average	Sale Price	317,039	316,505	0.2%	286,101	279,368	2.4%
	Days on Market	23	41	-43.9%	38	31	22.6%
	Percent of List	97.1%	98.2%	-1.1%	98.6%	98.8%	-0.2%
	Percent of Original	96.4%	96.8%	-0.4%	97.6%	97.6%	0.0%
Median	Sale Price	281,500	304,500	-7.6%	257,500	245,000	5.1%
	Days on Market	13	21	-38.1%	12	9	33.3%
	Percent of List	100.0%	100.0%	0.0%	100.0%	100.0%	0.0%
	Percent of Original	99.7%	99.7%	0.0%	98.9%	99.8%	-0.9%

A total of 53 homes sold in Riley County in October, down from 68 units in October 2023. Total sales volume fell to \$16.8 million compared to \$21.5 million in the previous year.

The median sales price in October was \$281,500, down 7.6% compared to the prior year. Median days on market was 13 days, the same as September, and down from 21 in October 2023.

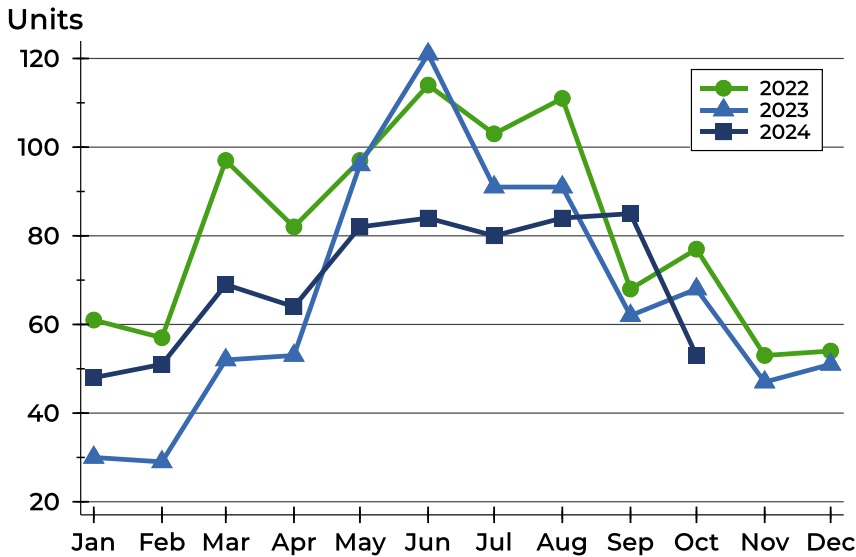
History of Closed Listings





Riley County Closed Listings Analysis

Closed Listings by Month



Month	2022	2023	2024
January	61	30	48
February	57	29	51
March	97	52	69
April	82	53	64
May	97	96	82
June	114	121	84
July	103	91	80
August	111	91	84
September	68	62	85
October	77	68	53
November	53	47	
December	54	51	

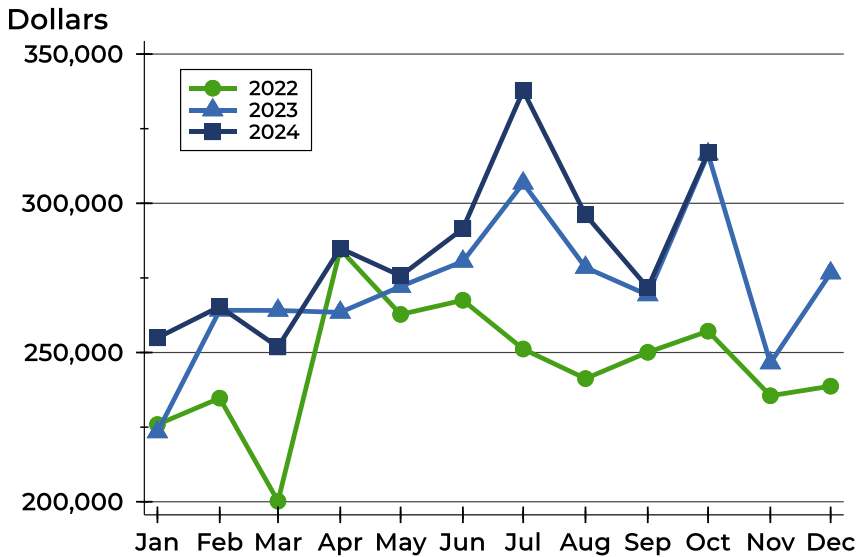
Closed Listings by Price Range

Price Range	Sales		Months' Supply	Sale Price		Days on Market		Price as % of List		Price as % of Orig.	
	Number	Percent		Average	Median	Avg.	Med.	Avg.	Med.	Avg.	Med.
Below \$25,000	0	0.0%	N/A	N/A	N/A	N/A	N/A	N/A	N/A	N/A	N/A
\$25,000-\$49,999	0	0.0%	N/A	N/A	N/A	N/A	N/A	N/A	N/A	N/A	N/A
\$50,000-\$99,999	2	3.8%	3.6	87,500	87,500	18	18	69.9%	69.9%	69.9%	69.9%
\$100,000-\$124,999	2	3.8%	3.1	119,000	119,000	11	11	96.4%	96.4%	96.4%	96.4%
\$125,000-\$149,999	2	3.8%	3.1	135,500	135,500	23	23	87.1%	87.1%	86.2%	86.2%
\$150,000-\$174,999	2	3.8%	1.9	165,000	165,000	7	7	93.5%	93.5%	93.5%	93.5%
\$175,000-\$199,999	4	7.5%	2.0	192,500	192,500	11	11	99.0%	100.0%	99.0%	100.0%
\$200,000-\$249,999	10	18.9%	1.4	224,940	224,950	22	23	100.5%	100.0%	99.5%	100.0%
\$250,000-\$299,999	8	15.1%	2.6	276,138	278,250	43	11	99.9%	100.0%	97.8%	98.9%
\$300,000-\$399,999	11	20.8%	3.2	341,231	329,125	17	6	100.9%	100.0%	100.8%	100.0%
\$400,000-\$499,999	5	9.4%	2.4	441,500	412,000	23	18	96.1%	97.7%	96.1%	97.7%
\$500,000-\$749,999	6	11.3%	3.4	600,083	606,250	33	33	93.7%	93.7%	92.5%	93.7%
\$750,000-\$999,999	1	1.9%	3.3	999,000	999,000	1	1	100.0%	100.0%	100.0%	100.0%
\$1,000,000 and up	0	0.0%	N/A	N/A	N/A	N/A	N/A	N/A	N/A	N/A	N/A



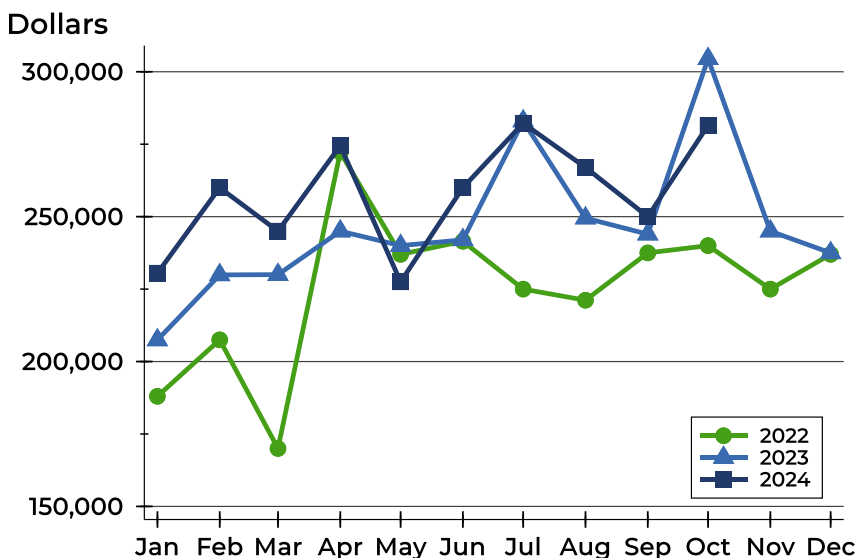
Riley County Closed Listings Analysis

Average Price



Month	2022	2023	2024
January	225,875	223,398	254,923
February	234,723	264,153	265,385
March	200,196	264,104	251,866
April	284,561	263,458	284,918
May	262,771	272,119	275,698
June	267,511	280,542	291,474
July	251,180	306,725	337,739
August	241,275	278,493	296,153
September	250,074	269,304	271,717
October	257,164	316,505	317,039
November	235,522	246,497	
December	238,726	276,629	

Median Price

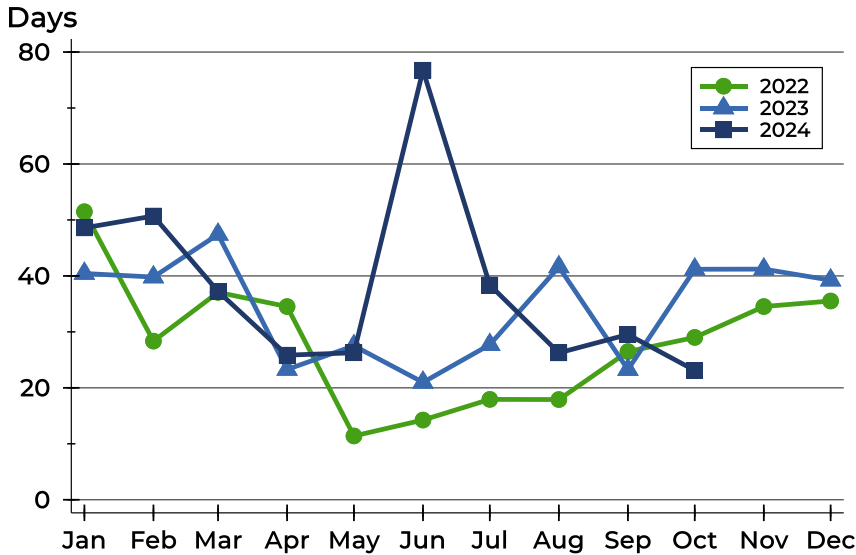


Month	2022	2023	2024
January	188,000	207,450	230,500
February	207,500	229,900	260,000
March	170,000	230,000	245,000
April	272,250	245,000	274,500
May	237,000	240,000	227,500
June	241,500	242,000	260,000
July	225,000	283,000	282,250
August	221,159	249,500	267,000
September	237,500	243,950	250,000
October	240,000	304,500	281,500
November	225,000	245,000	
December	237,000	237,500	



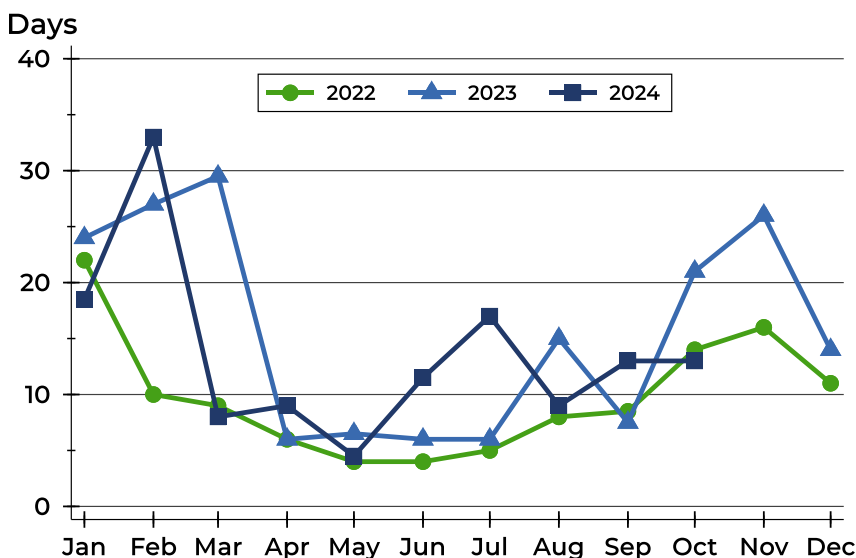
Riley County Closed Listings Analysis

Average DOM



Month	2022	2023	2024
January	51	40	49
February	28	40	51
March	37	47	37
April	35	23	26
May	11	28	26
June	14	21	77
July	18	28	38
August	18	42	26
September	26	23	30
October	29	41	23
November	35	41	
December	36	39	

Median DOM



Month	2022	2023	2024
January	22	24	19
February	10	27	33
March	9	30	8
April	6	6	9
May	4	7	5
June	4	6	12
July	5	6	17
August	8	15	9
September	9	8	13
October	14	21	13
November	16	26	
December	11	14	



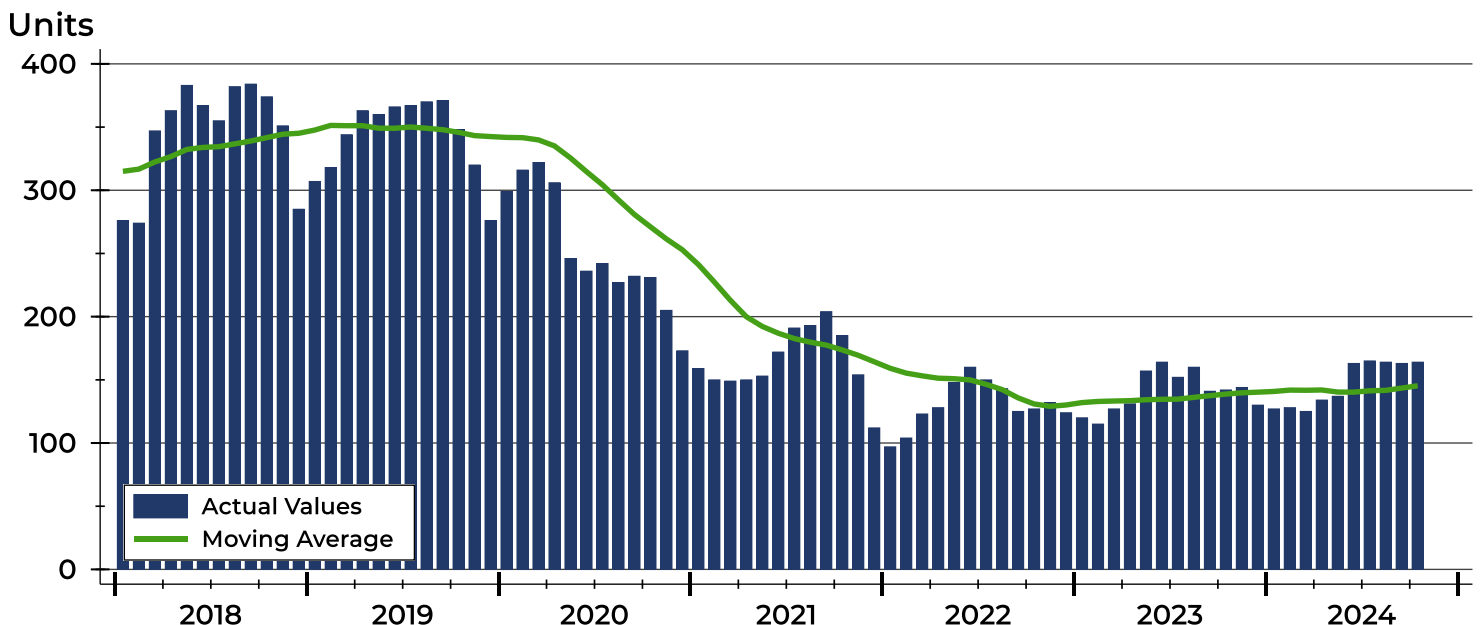
Riley County Active Listings Analysis

Summary Statistics for Active Listings		2024	End of October 2023	Change
Active Listings		164	142	15.5%
Volume (1,000s)		53,485	42,968	24.5%
Months' Supply		2.5	2.1	19.0%
Average	List Price	326,126	302,591	7.8%
	Days on Market	72	76	-5.3%
	Percent of Original	97.7%	97.2%	0.5%
Median	List Price	283,900	264,500	7.3%
	Days on Market	54	55	-1.8%
	Percent of Original	100.0%	100.0%	0.0%

A total of 164 homes were available for sale in Riley County at the end of October. This represents a 2.5 months' supply of active listings.

The median list price of homes on the market at the end of October was \$283,900, up 7.3% from 2023. The typical time on market for active listings was 54 days, down from 55 days a year earlier.

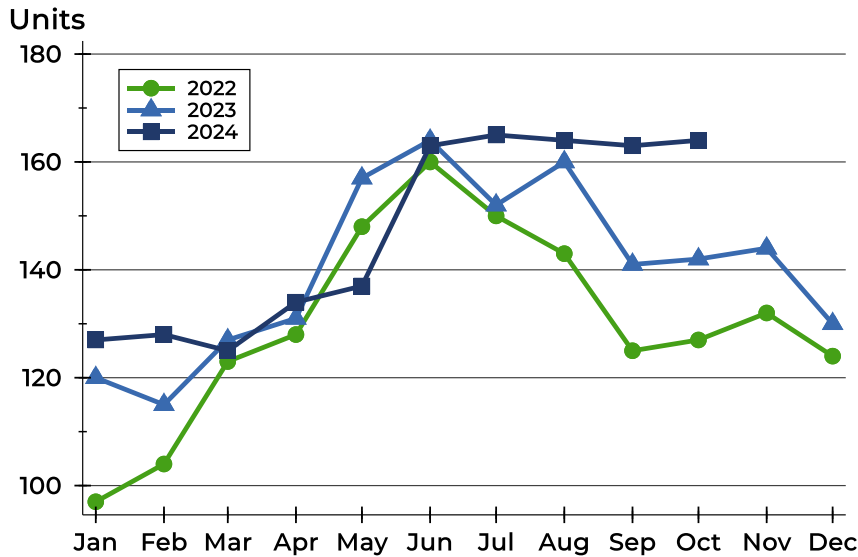
History of Active Listings





Riley County Active Listings Analysis

Active Listings by Month



Month	2022	2023	2024
January	97	120	127
February	104	115	128
March	123	127	125
April	128	131	134
May	148	157	137
June	160	164	163
July	150	152	165
August	143	160	164
September	125	141	163
October	127	142	164
November	132	144	
December	124	130	

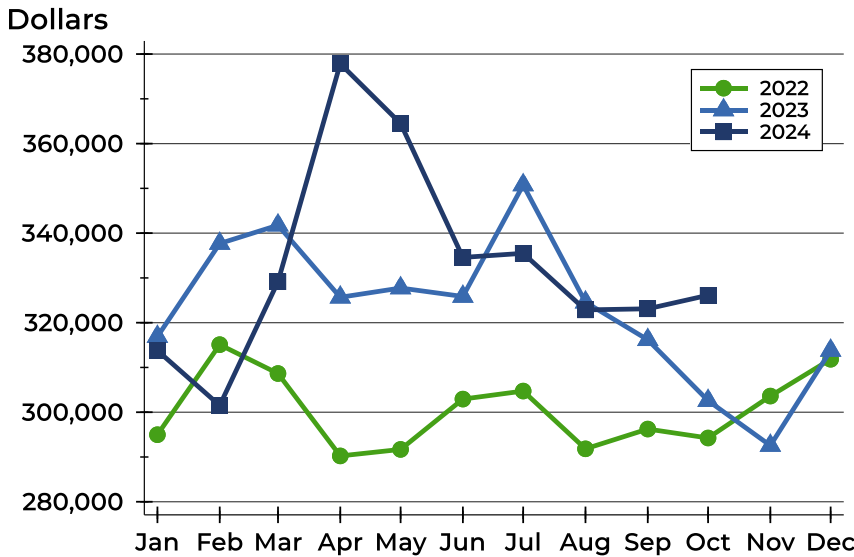
Active Listings by Price Range

Price Range	Active Listings		Months' Supply	List Price		Days on Market		Price as % of Orig.	
	Number	Percent		Average	Median	Avg.	Med.	Avg.	Med.
Below \$25,000	0	0.0%	N/A	N/A	N/A	N/A	N/A	N/A	N/A
\$25,000-\$49,999	0	0.0%	N/A	N/A	N/A	N/A	N/A	N/A	N/A
\$50,000-\$99,999	6	3.7%	3.6	81,467	81,200	74	43	97.8%	100.0%
\$100,000-\$124,999	7	4.3%	3.1	114,814	115,000	27	10	95.2%	100.0%
\$125,000-\$149,999	8	4.9%	3.1	140,288	141,700	68	70	98.9%	100.0%
\$150,000-\$174,999	9	5.5%	1.9	163,433	167,000	110	95	97.2%	97.4%
\$175,000-\$199,999	14	8.5%	2.0	187,954	186,250	83	43	97.9%	100.0%
\$200,000-\$249,999	18	11.0%	1.4	235,011	239,450	66	47	98.1%	100.0%
\$250,000-\$299,999	30	18.3%	2.6	275,673	277,450	65	39	98.5%	100.0%
\$300,000-\$399,999	40	24.4%	3.2	348,962	354,000	74	51	97.9%	100.0%
\$400,000-\$499,999	13	7.9%	2.4	436,600	439,900	51	50	97.8%	100.0%
\$500,000-\$749,999	14	8.5%	3.4	594,671	562,000	52	53	97.8%	100.0%
\$750,000-\$999,999	3	1.8%	3.3	902,500	958,000	163	146	87.5%	88.8%
\$1,000,000 and up	2	1.2%	N/A	1,900,000	1,900,000	247	247	100.0%	100.0%



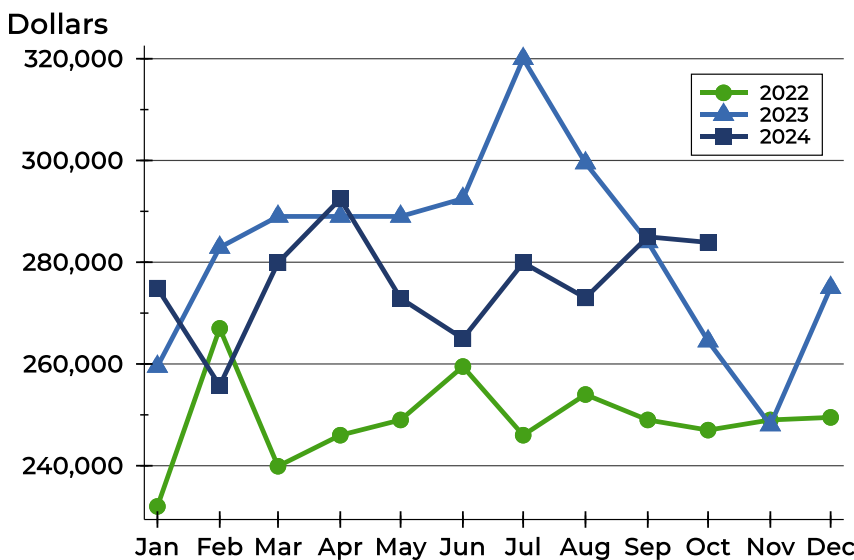
Riley County Active Listings Analysis

Average Price



Month	2022	2023	2024
January	294,980	316,889	313,781
February	315,098	337,680	301,514
March	308,649	341,768	329,145
April	290,244	325,675	377,844
May	291,693	327,740	364,496
June	302,934	325,855	334,580
July	304,729	350,757	335,498
August	291,827	324,571	322,859
September	296,245	316,188	323,097
October	294,245	302,591	326,126
November	303,615	292,564	
December	311,834	313,791	

Median Price

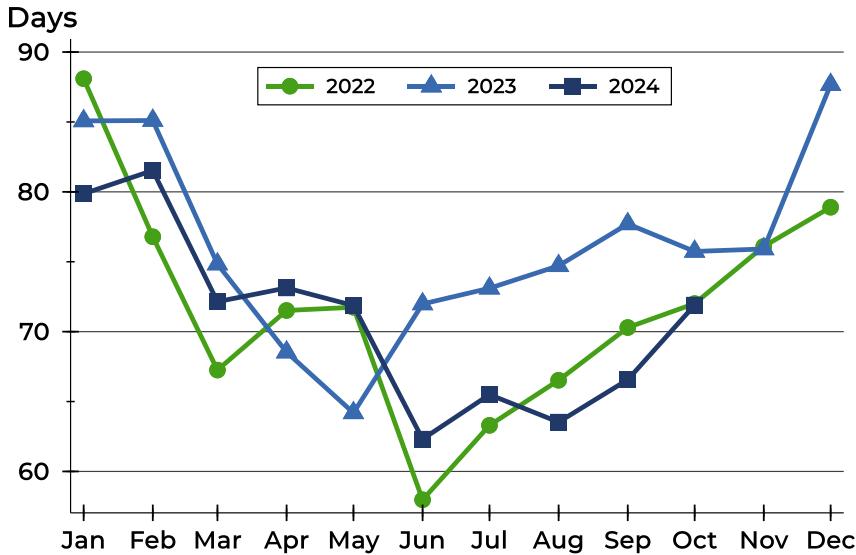


Month	2022	2023	2024
January	232,000	259,500	274,900
February	267,000	282,900	255,750
March	239,900	289,000	279,900
April	246,000	289,000	292,450
May	249,000	289,000	272,900
June	259,500	292,500	265,000
July	246,000	320,000	279,900
August	254,000	299,500	273,000
September	249,000	284,000	285,000
October	247,000	264,500	283,900
November	249,000	248,000	
December	249,500	275,000	



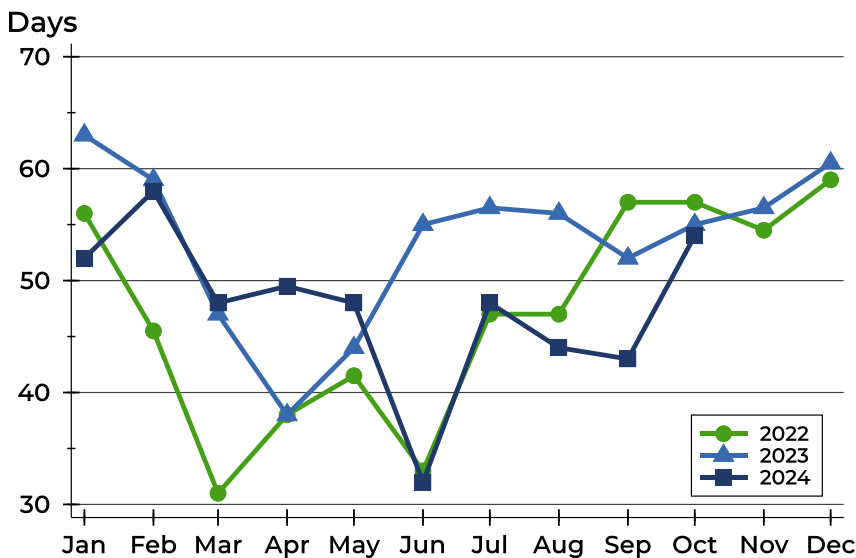
Riley County Active Listings Analysis

Average DOM



Month	2022	2023	2024
January	88	85	80
February	77	85	82
March	67	75	72
April	72	69	73
May	72	64	72
June	58	72	62
July	63	73	65
August	67	75	64
September	70	78	67
October	72	76	72
November	76	76	
December	79	88	

Median DOM

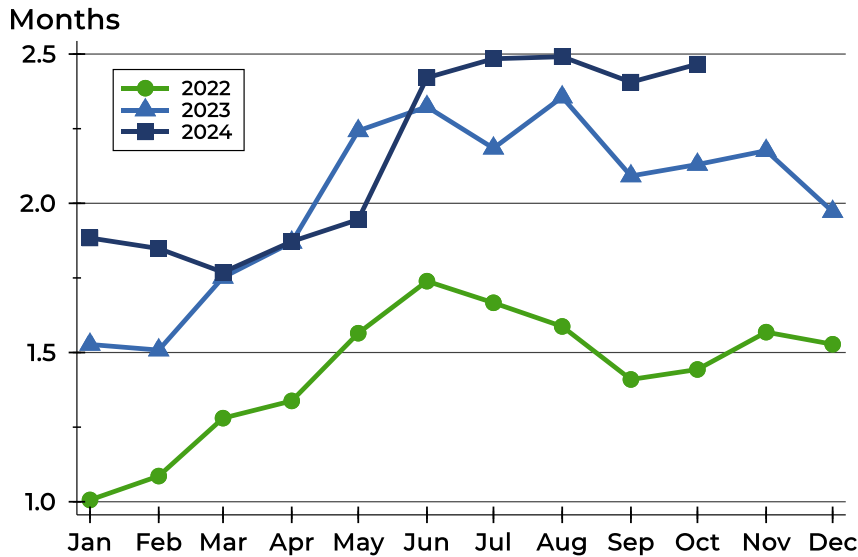


Month	2022	2023	2024
January	56	63	52
February	46	59	58
March	31	47	48
April	38	38	50
May	42	44	48
June	33	55	32
July	47	57	48
August	47	56	44
September	57	52	43
October	57	55	54
November	55	57	
December	59	61	



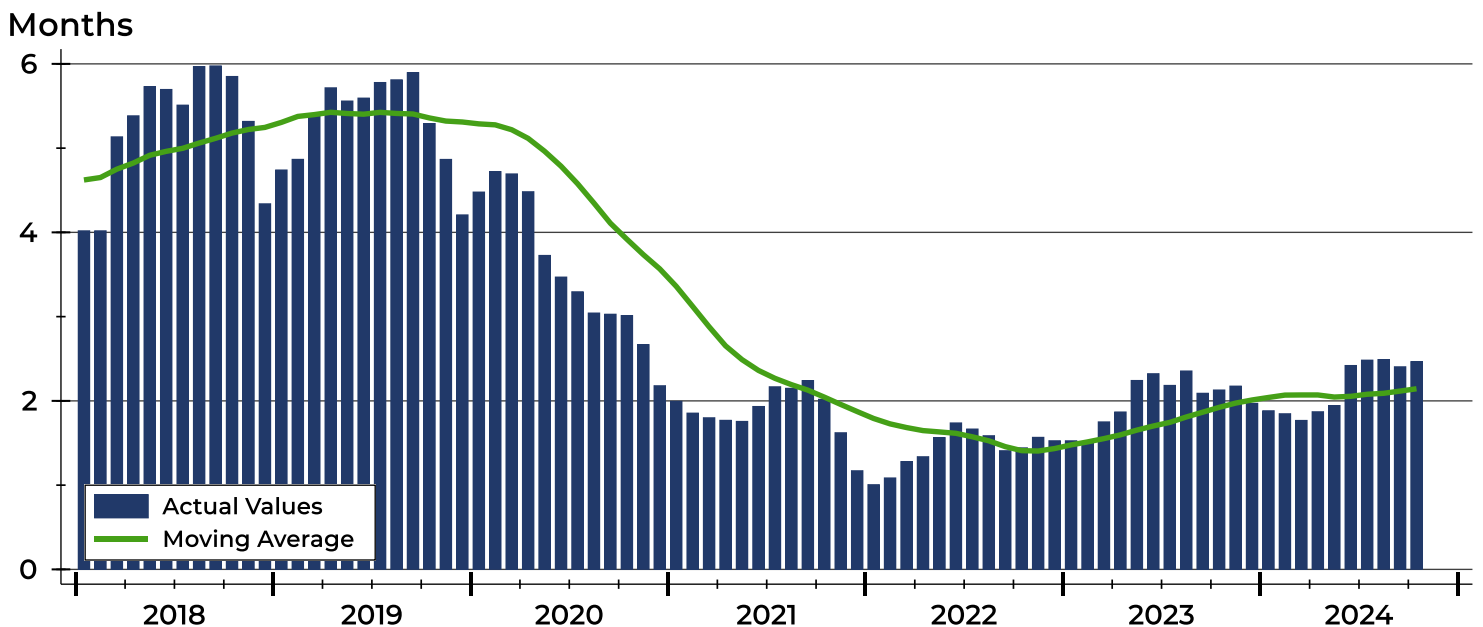
Riley County Months' Supply Analysis

Months' Supply by Month



Month	2022	2023	2024
January	1.0	1.5	1.9
February	1.1	1.5	1.8
March	1.3	1.8	1.8
April	1.3	1.9	1.9
May	1.6	2.2	1.9
June	1.7	2.3	2.4
July	1.7	2.2	2.5
August	1.6	2.4	2.5
September	1.4	2.1	2.4
October	1.4	2.1	2.5
November	1.6	2.2	
December	1.5	2.0	

History of Month's Supply





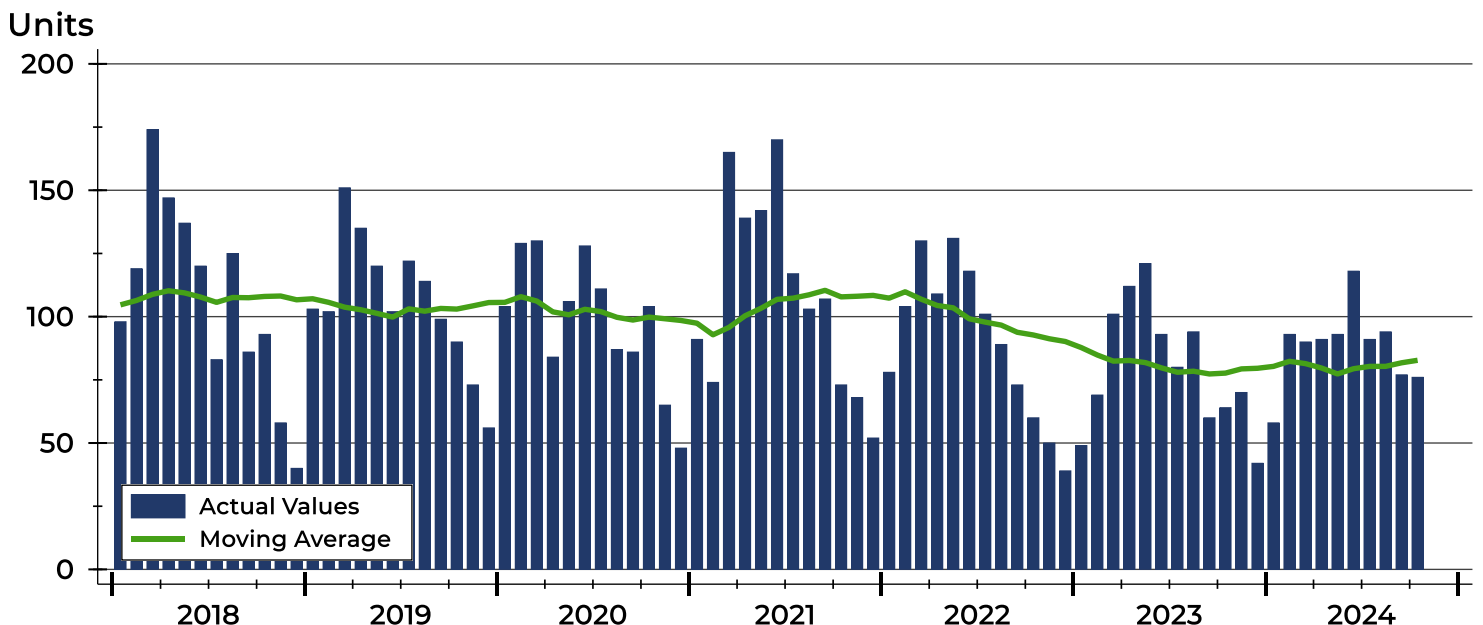
Riley County New Listings Analysis

Summary Statistics for New Listings		2024	October 2023	Change
Current Month	New Listings	76	64	18.8%
	Volume (1,000s)	22,225	17,533	26.8%
	Average List Price	292,437	273,948	6.7%
	Median List Price	275,000	254,500	8.1%
Year-to-Date	New Listings	881	843	4.5%
	Volume (1,000s)	268,038	240,046	11.7%
	Average List Price	304,243	284,753	6.8%
	Median List Price	269,000	255,000	5.5%

A total of 76 new listings were added in Riley County during October, up 18.8% from the same month in 2023. Year-to-date Riley County has seen 881 new listings.

The median list price of these homes was \$275,000 up from \$254,500 in 2023.

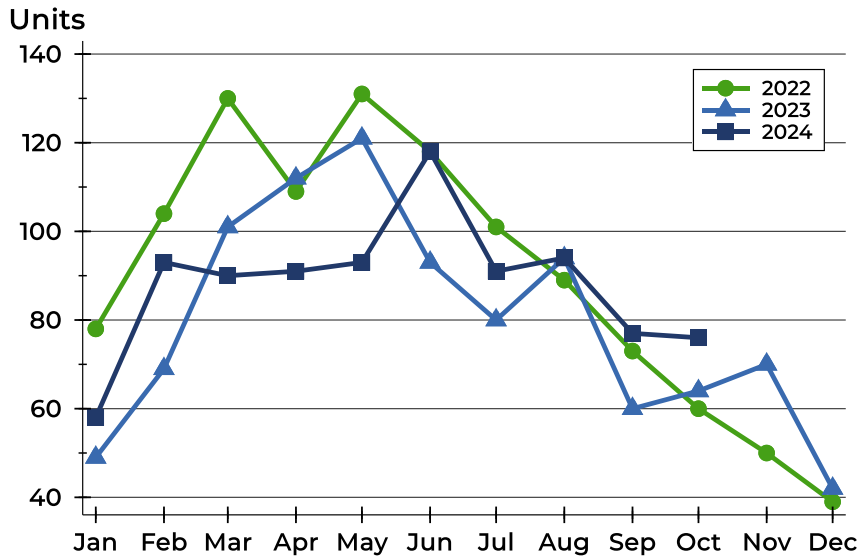
History of New Listings





Riley County New Listings Analysis

New Listings by Month



Month	2022	2023	2024
January	78	49	58
February	104	69	93
March	130	101	90
April	109	112	91
May	131	121	93
June	118	93	118
July	101	80	91
August	89	94	94
September	73	60	77
October	60	64	76
November	50	70	
December	39	42	

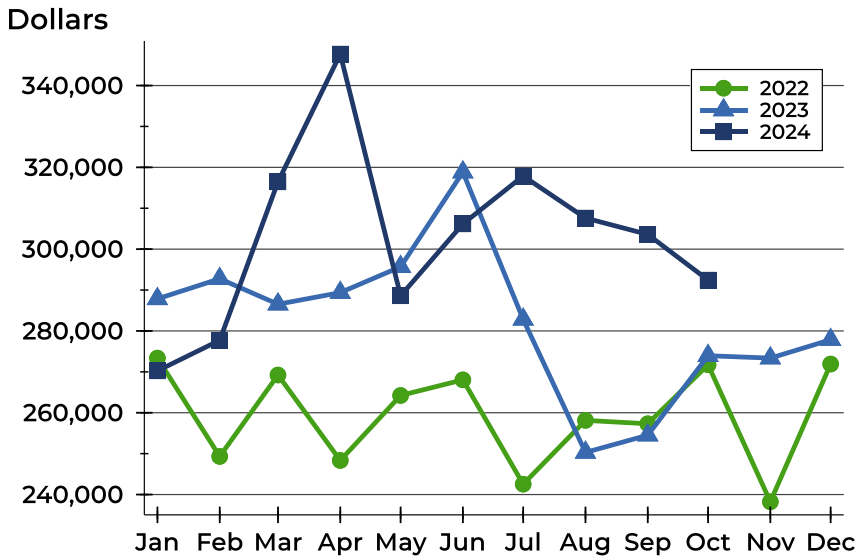
New Listings by Price Range

Price Range	New Listings		List Price		Days on Market		Price as % of Orig.	
	Number	Percent	Average	Median	Avg.	Med.	Avg.	Med.
Below \$25,000	0	0.0%	N/A	N/A	N/A	N/A	N/A	N/A
\$25,000-\$49,999	0	0.0%	N/A	N/A	N/A	N/A	N/A	N/A
\$50,000-\$99,999	3	3.9%	69,967	69,900	17	21	100.0%	100.0%
\$100,000-\$124,999	2	2.6%	117,450	117,450	13	13	100.0%	100.0%
\$125,000-\$149,999	2	2.6%	130,000	130,000	21	21	100.0%	100.0%
\$150,000-\$174,999	2	2.6%	167,500	167,500	9	9	100.0%	100.0%
\$175,000-\$199,999	4	5.3%	188,863	188,250	21	23	99.3%	100.0%
\$200,000-\$249,999	16	21.1%	224,744	227,500	11	10	99.5%	100.0%
\$250,000-\$299,999	19	25.0%	276,224	275,000	16	14	100.4%	100.0%
\$300,000-\$399,999	16	21.1%	343,181	350,000	17	10	100.0%	100.0%
\$400,000-\$499,999	7	9.2%	444,986	439,900	12	9	100.0%	100.0%
\$500,000-\$749,999	5	6.6%	596,000	600,000	20	21	100.0%	100.0%
\$750,000-\$999,999	0	0.0%	N/A	N/A	N/A	N/A	N/A	N/A
\$1,000,000 and up	0	0.0%	N/A	N/A	N/A	N/A	N/A	N/A



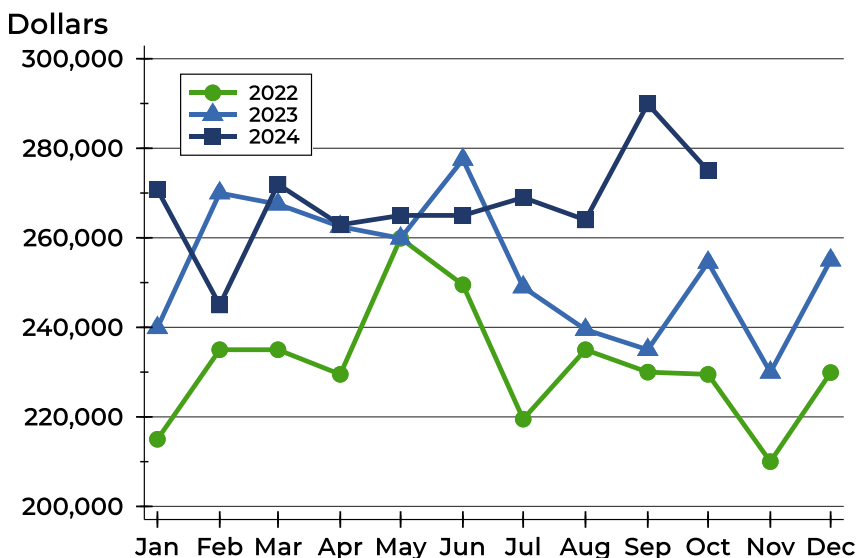
Riley County New Listings Analysis

Average Price



Month	2022	2023	2024
January	273,365	287,852	270,247
February	249,317	292,767	277,719
March	269,234	286,544	316,455
April	248,339	289,376	347,701
May	264,226	295,696	288,602
June	268,046	318,828	306,175
July	242,536	282,840	317,883
August	258,135	250,303	307,611
September	257,311	254,518	303,604
October	271,739	273,948	292,437
November	238,235	273,362	
December	271,909	277,852	

Median Price



Month	2022	2023	2024
January	215,000	239,900	270,750
February	235,000	270,000	245,000
March	235,000	267,500	271,950
April	229,500	262,500	262,900
May	259,900	259,900	265,000
June	249,500	277,500	265,000
July	219,500	249,000	269,000
August	235,000	239,500	264,000
September	230,000	235,000	289,900
October	229,500	254,500	275,000
November	210,000	229,950	
December	229,900	255,000	



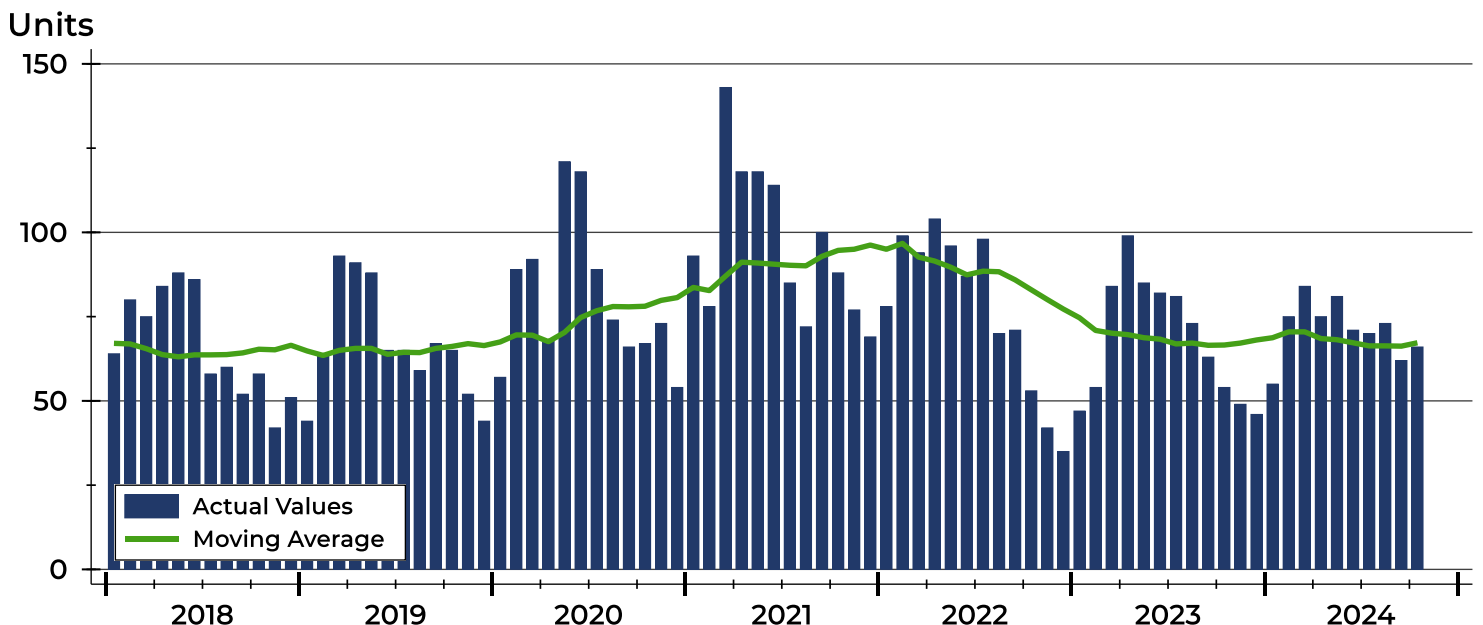
Riley County Contracts Written Analysis

Summary Statistics for Contracts Written		2024	October 2023	Change	2024	Year-to-Date 2023	Change
Contracts Written		66	54	22.2%	712	722	-1.4%
Volume (1,000s)		18,938	14,604	29.7%	209,058	204,686	2.1%
Average	Sale Price	286,944	270,441	6.1%	293,621	283,499	3.6%
	Days on Market	30	43	-30.2%	38	31	22.6%
	Percent of Original	98.4%	96.3%	2.2%	97.9%	97.6%	0.3%
Median	Sale Price	274,500	256,750	6.9%	265,000	249,250	6.3%
	Days on Market	20	16	25.0%	12	9	33.3%
	Percent of Original	100.0%	98.5%	1.5%	99.7%	99.8%	-0.1%

A total of 66 contracts for sale were written in Riley County during the month of October, up from 54 in 2023. The median list price of these homes was \$274,500, up from \$256,750 the prior year.

Half of the homes that went under contract in October were on the market less than 20 days, compared to 16 days in October 2023.

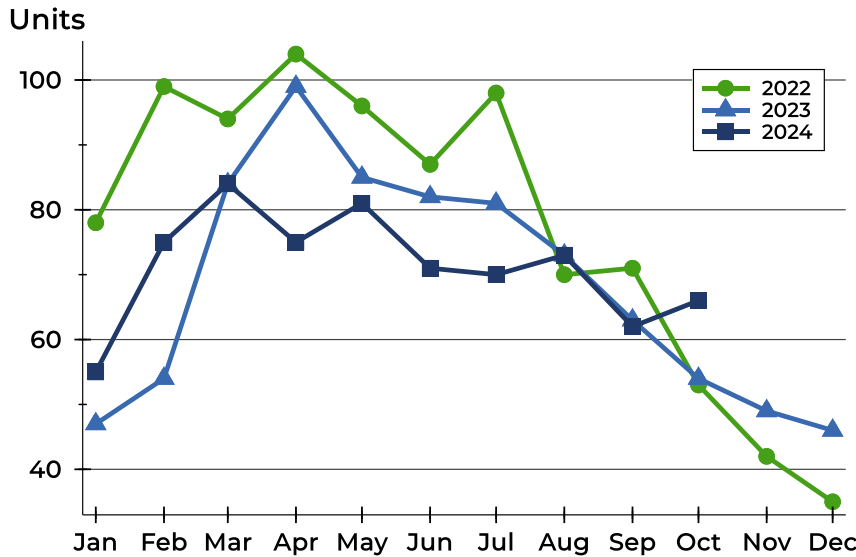
History of Contracts Written





Riley County Contracts Written Analysis

Contracts Written by Month



Month	2022	2023	2024
January	78	47	55
February	99	54	75
March	94	84	84
April	104	99	75
May	96	85	81
June	87	82	71
July	98	81	70
August	70	73	73
September	71	63	62
October	53	54	66
November	42	49	
December	35	46	

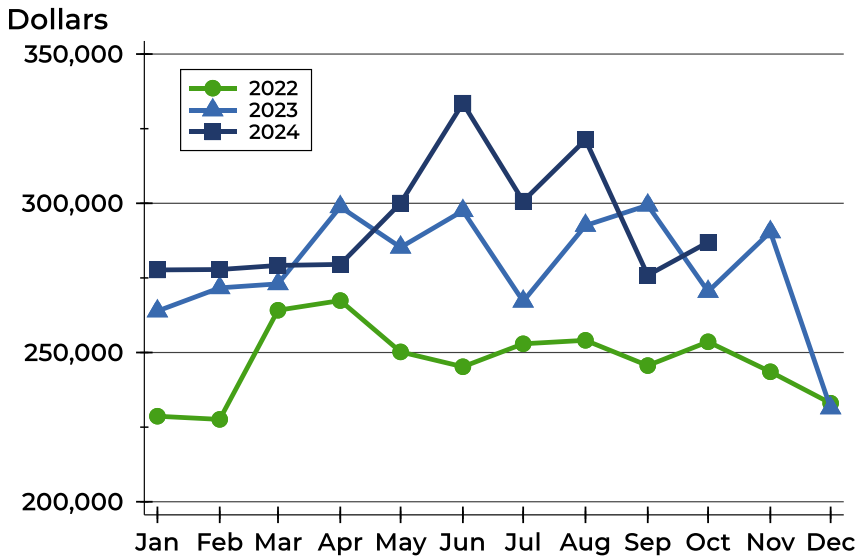
Contracts Written by Price Range

Price Range	Contracts Written		List Price		Days on Market		Price as % of Orig.	
	Number	Percent	Average	Median	Avg.	Med.	Avg.	Med.
Below \$25,000	0	0.0%	N/A	N/A	N/A	N/A	N/A	N/A
\$25,000-\$49,999	1	1.5%	32,000	32,000	42	42	100.0%	100.0%
\$50,000-\$99,999	2	3.0%	69,000	69,000	35	35	89.4%	89.4%
\$100,000-\$124,999	2	3.0%	115,000	115,000	80	80	75.6%	75.6%
\$125,000-\$149,999	3	4.5%	131,000	129,000	53	51	99.0%	100.0%
\$150,000-\$174,999	3	4.5%	164,000	165,000	46	9	96.6%	100.0%
\$175,000-\$199,999	0	0.0%	N/A	N/A	N/A	N/A	N/A	N/A
\$200,000-\$249,999	16	24.2%	220,519	219,850	25	15	99.3%	100.0%
\$250,000-\$299,999	14	21.2%	276,843	279,450	28	22	100.5%	100.0%
\$300,000-\$399,999	14	21.2%	349,407	350,000	29	19	99.2%	100.0%
\$400,000-\$499,999	7	10.6%	438,214	425,000	15	13	99.6%	100.0%
\$500,000-\$749,999	4	6.1%	572,500	567,500	32	23	98.2%	99.5%
\$750,000-\$999,999	0	0.0%	N/A	N/A	N/A	N/A	N/A	N/A
\$1,000,000 and up	0	0.0%	N/A	N/A	N/A	N/A	N/A	N/A



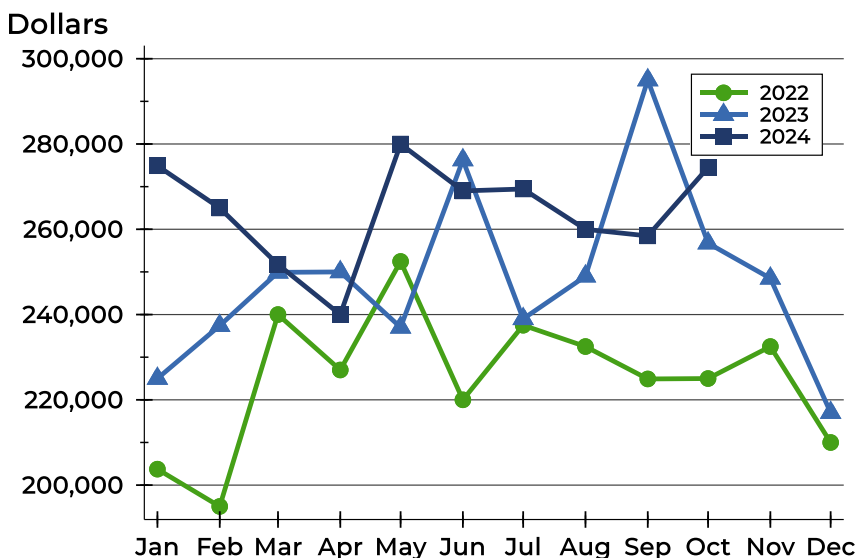
Riley County Contracts Written Analysis

Average Price



Month	2022	2023	2024
January	228,668	263,891	277,683
February	227,600	271,664	277,810
March	264,169	273,006	279,183
April	267,411	298,818	279,529
May	250,209	285,244	300,060
June	245,241	297,489	333,533
July	252,925	267,157	300,715
August	254,097	292,554	321,281
September	245,622	299,340	275,903
October	253,600	270,441	286,944
November	243,560	290,402	
December	233,020	231,409	

Median Price

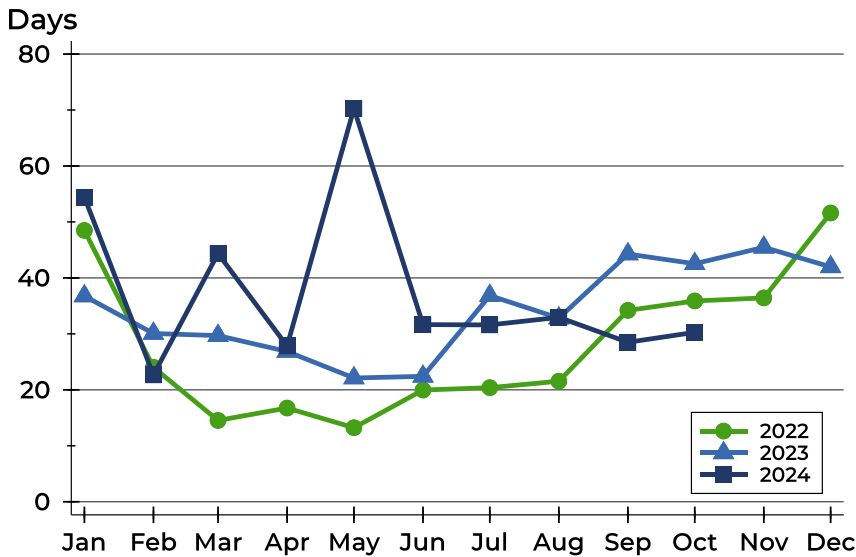


Month	2022	2023	2024
January	203,750	225,000	274,900
February	195,000	237,400	265,000
March	240,000	249,900	251,750
April	227,000	250,000	240,000
May	252,450	237,000	280,000
June	220,000	276,250	269,000
July	237,500	239,000	269,450
August	232,500	249,000	260,000
September	224,900	295,000	258,450
October	225,000	256,750	274,500
November	232,500	248,500	
December	210,000	217,000	



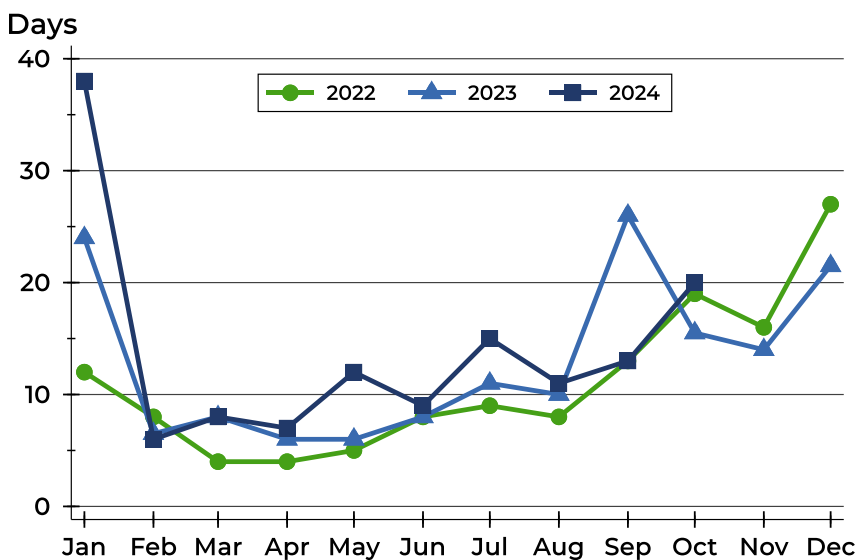
Riley County Contracts Written Analysis

Average DOM



Month	2022	2023	2024
January	48	37	54
February	24	30	23
March	15	30	44
April	17	27	28
May	13	22	70
June	20	22	32
July	20	37	32
August	22	33	33
September	34	44	29
October	36	43	30
November	36	45	
December	52	42	

Median DOM



Month	2022	2023	2024
January	12	24	38
February	8	7	6
March	4	8	8
April	4	6	7
May	5	6	12
June	8	8	9
July	9	11	15
August	8	10	11
September	13	26	13
October	19	16	20
November	16	14	
December	27	22	



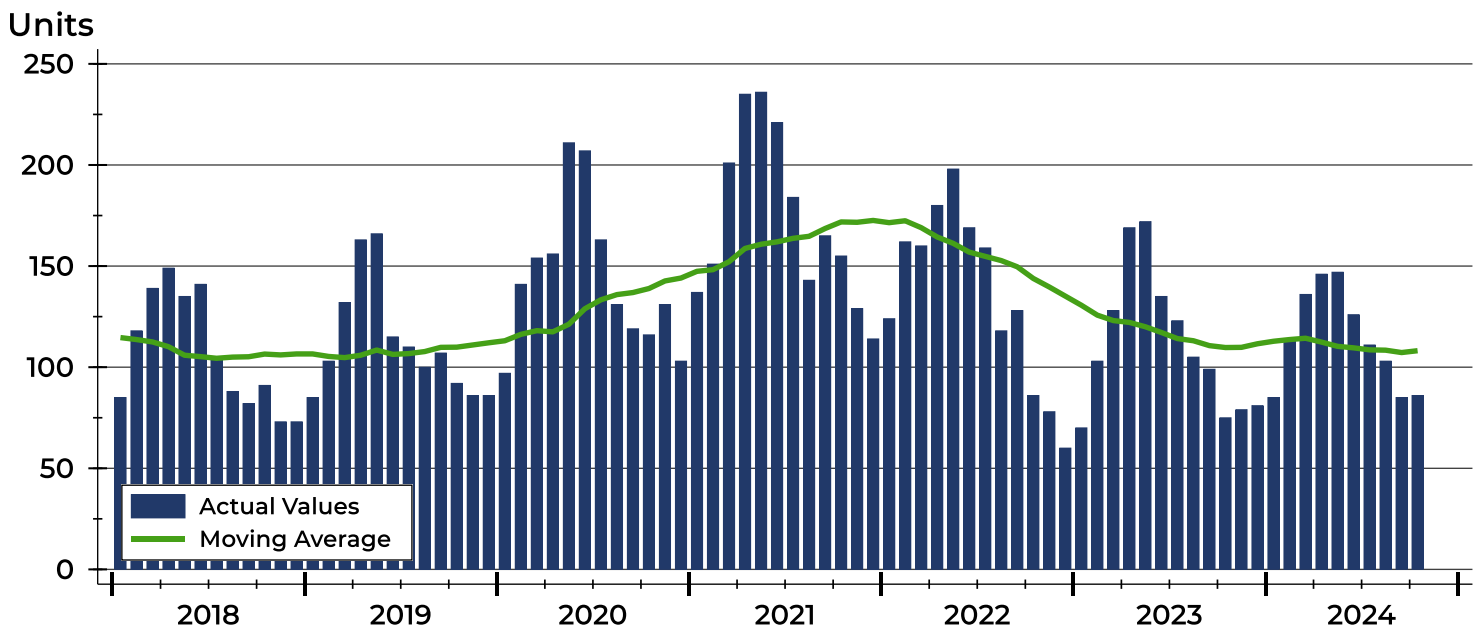
Riley County Pending Contracts Analysis

Summary Statistics for Pending Contracts		End of October		
		2024	2023	Change
Pending Contracts		86	75	14.7%
Volume (1,000s)		25,609	19,918	28.6%
Average	List Price	297,779	265,571	12.1%
	Days on Market	41	48	-14.6%
	Percent of Original	98.4%	97.5%	0.9%
Median	List Price	269,500	245,000	10.0%
	Days on Market	21	21	0.0%
	Percent of Original	100.0%	100.0%	0.0%

A total of 86 listings in Riley County had contracts pending at the end of October, up from 75 contracts pending at the end of October 2023.

Pending contracts reflect listings with a contract in place at the end of the month. In contrast, contracts written measures the number of listings put under contract during the month.

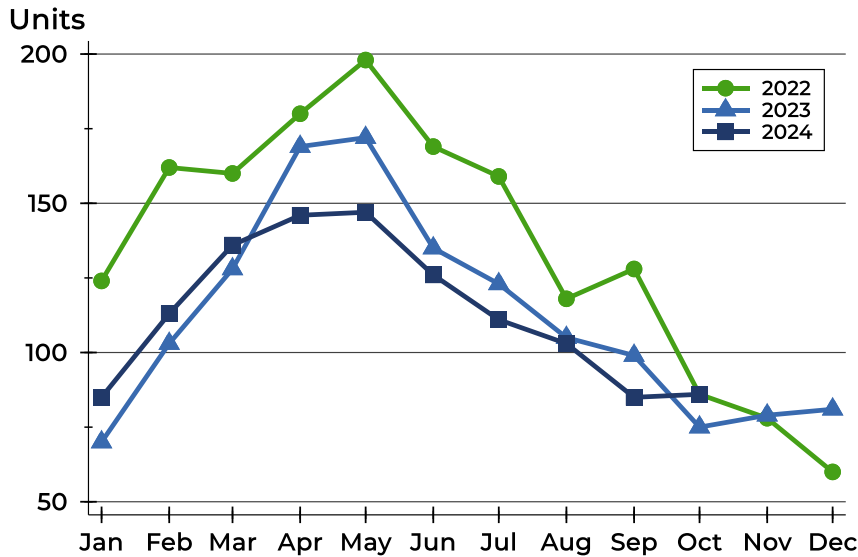
History of Pending Contracts





Riley County Pending Contracts Analysis

Pending Contracts by Month



Month	2022	2023	2024
January	124	70	85
February	162	103	113
March	160	128	136
April	180	169	146
May	198	172	147
June	169	135	126
July	159	123	111
August	118	105	103
September	128	99	85
October	86	75	86
November	78	79	
December	60	81	

Pending Contracts by Price Range

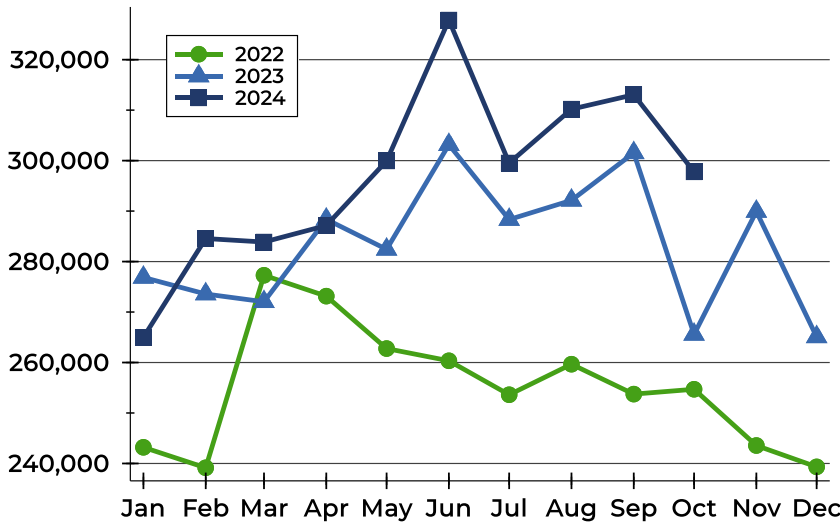
Price Range	Pending Contracts		List Price		Days on Market		Price as % of Orig.	
	Number	Percent	Average	Median	Avg.	Med.	Avg.	Med.
Below \$25,000	0	0.0%	N/A	N/A	N/A	N/A	N/A	N/A
\$25,000-\$49,999	1	1.2%	32,000	32,000	42	42	100.0%	100.0%
\$50,000-\$99,999	2	2.3%	69,000	69,000	35	35	89.4%	89.4%
\$100,000-\$124,999	1	1.2%	110,000	110,000	132	132	84.6%	84.6%
\$125,000-\$149,999	4	4.7%	130,675	129,350	42	30	100.0%	100.0%
\$150,000-\$174,999	4	4.7%	164,250	165,000	42	18	98.5%	100.0%
\$175,000-\$199,999	3	3.5%	192,000	197,000	77	35	98.3%	100.0%
\$200,000-\$249,999	21	24.4%	222,400	219,900	30	14	99.4%	100.0%
\$250,000-\$299,999	17	19.8%	275,253	279,000	25	19	99.6%	100.0%
\$300,000-\$399,999	19	22.1%	350,511	350,000	37	15	98.1%	100.0%
\$400,000-\$499,999	9	10.5%	445,433	445,000	27	15	100.0%	100.0%
\$500,000-\$749,999	4	4.7%	576,250	567,500	56	50	99.8%	100.0%
\$750,000-\$999,999	0	0.0%	N/A	N/A	N/A	N/A	N/A	N/A
\$1,000,000 and up	1	1.2%	1,250,000	1,250,000	445	445	66.7%	66.7%



Riley County Pending Contracts Analysis

Average Price

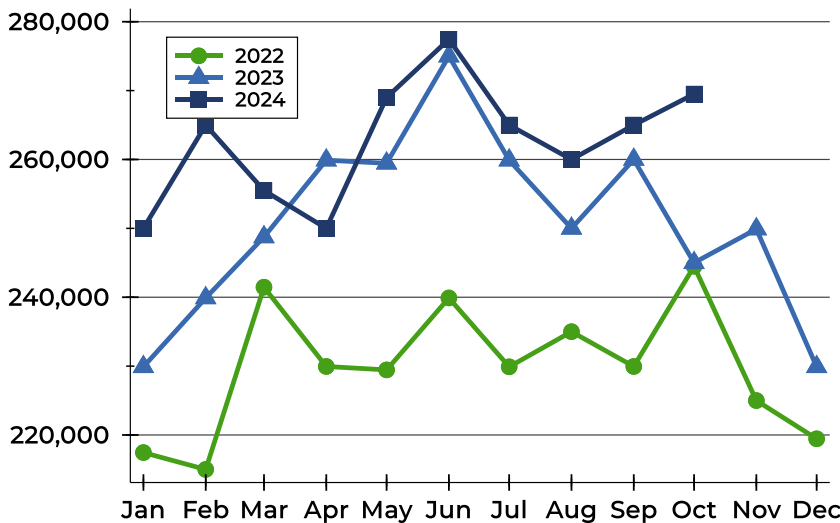
Dollars



Month	2022	2023	2024
January	243,204	276,864	264,992
February	239,149	273,576	284,565
March	277,287	272,038	283,872
April	273,152	288,375	287,141
May	262,768	282,422	299,939
June	260,348	303,159	327,846
July	253,615	288,326	299,528
August	259,667	292,135	310,197
September	253,740	301,537	313,052
October	254,702	265,571	297,779
November	243,560	289,928	
December	239,327	265,080	

Median Price

Dollars

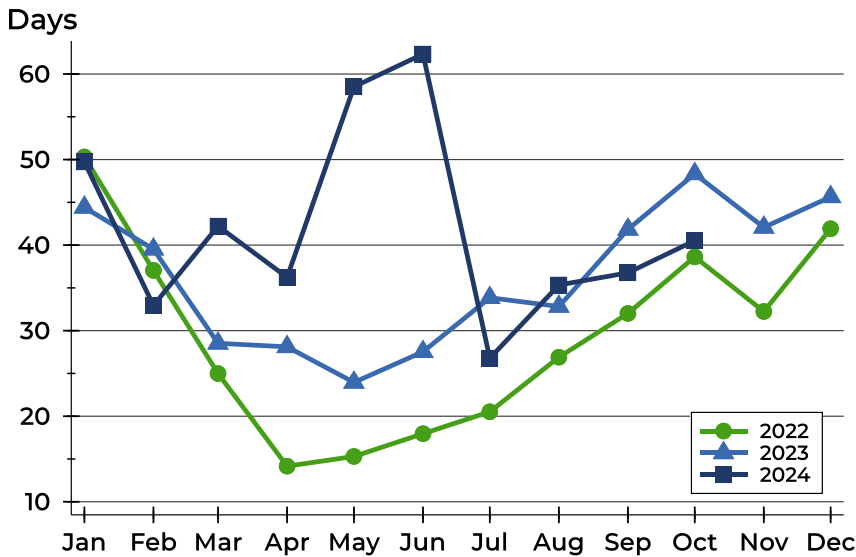


Month	2022	2023	2024
January	217,450	229,900	250,000
February	215,000	239,900	265,000
March	241,460	248,750	255,500
April	229,950	259,900	250,000
May	229,450	259,450	269,000
June	239,900	275,000	277,450
July	229,900	259,900	265,000
August	235,000	250,000	260,000
September	229,950	260,000	265,000
October	244,500	245,000	269,500
November	225,000	249,900	
December	219,450	229,900	



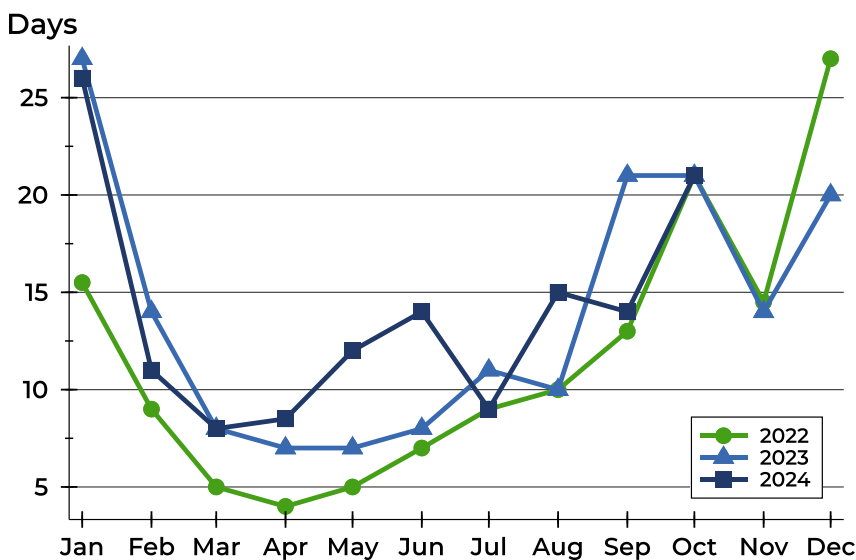
Riley County Pending Contracts Analysis

Average DOM



Month	2022	2023	2024
January	50	44	50
February	37	40	33
March	25	29	42
April	14	28	36
May	15	24	59
June	18	28	62
July	21	34	27
August	27	33	35
September	32	42	37
October	39	48	41
November	32	42	
December	42	46	

Median DOM



Month	2022	2023	2024
January	16	27	26
February	9	14	11
March	5	8	8
April	4	7	9
May	5	7	12
June	7	8	14
July	9	11	9
August	10	10	15
September	13	21	14
October	21	21	21
November	15	14	
December	27	20	