



**December
2024**

Flint Hills MLS Statistics



**FLINT HILLS
ASSOCIATION
OF REALTORS®**

Riley County Housing Report



Market Overview

Riley County Home Sales Rose in December

Total home sales in Riley County rose by 3.9% last month to 53 units, compared to 51 units in December 2023. Total sales volume was \$15.6 million, up 10.7% from a year earlier.

The median sale price in December was \$290,000, up from \$237,500 a year earlier. Homes that sold in December were typically on the market for 17 days and sold for 99.5% of their list prices.

Riley County Active Listings Up at End of December

The total number of active listings in Riley County at the end of December was 131 units, up from 130 at the same point in 2023. This represents a 1.9 months' supply of homes available for sale. The median list price of homes on the market at the end of December was \$289,900.

During December, a total of 34 contracts were written down from 46 in December 2023. At the end of the month, there were 67 contracts still pending.

Report Contents

- Summary Statistics – Page 2
- Closed Listing Analysis – Page 3
- Active Listings Analysis – Page 7
- Months' Supply Analysis – Page 11
- New Listings Analysis – Page 12
- Contracts Written Analysis – Page 15
- Pending Contracts Analysis – Page 19

Contact Information

Margaret Pendleton, Association Executive
 Flint Hills Association of REALTORS®
 205 S. Seth Child Road
 Manhattan, KS 66502
 785-776-1203
ae@flinthillsrealtors.net
www.flinthillsrealtors.net



Riley County Summary Statistics

December MLS Statistics Three-year History		Current Month			Year-to-Date		
		2024	2023	2022	2024	2023	2022
Home Sales		53	51	54	815	791	974
Change from prior year		3.9%	-5.6%	-40.0%	3.0%	-18.8%	-15.1%
Active Listings		131	130	124	N/A	N/A	N/A
Change from prior year		0.8%	4.8%	10.7%			
Months' Supply		1.9	2.0	1.5	N/A	N/A	N/A
Change from prior year		-5.0%	33.3%	25.0%			
New Listings		48	42	39	984	955	1,082
Change from prior year		14.3%	7.7%	-25.0%	3.0%	-11.7%	-16.8%
Contracts Written		34	46	35	802	817	927
Change from prior year		-26.1%	31.4%	-49.3%	-1.8%	-11.9%	-19.7%
Pending Contracts		67	81	60	N/A	N/A	N/A
Change from prior year		-17.3%	35.0%	-47.4%			
Sales Volume (1,000s)		15,611	14,108	12,891	235,909	219,296	240,729
Change from prior year		10.7%	9.4%	-44.3%	7.6%	-8.9%	-11.6%
Average	Sale Price	294,555	276,629	238,726	289,459	277,238	247,155
	Change from prior year	6.5%	15.9%	-7.2%	4.4%	12.2%	4.1%
	List Price of Actives	326,110	313,791	311,834	N/A	N/A	N/A
	Change from prior year	3.9%	0.6%	18.5%			
	Days on Market	38	39	36	38	33	26
Change from prior year	-2.6%	8.3%	-2.7%	15.2%	26.9%	-25.7%	
	Percent of List	98.3%	98.3%	98.8%	98.5%	98.7%	99.4%
Change from prior year	0.0%	-0.5%	-0.5%	-0.2%	-0.7%	0.2%	
	Percent of Original	96.7%	96.1%	97.6%	97.4%	97.4%	98.4%
Change from prior year	0.6%	-1.5%	0.4%	0.0%	-1.0%	0.4%	
Median	Sale Price	290,000	237,500	237,000	260,000	244,900	226,000
	Change from prior year	22.1%	0.2%	9.0%	6.2%	8.4%	5.1%
	List Price of Actives	289,900	275,000	249,500	N/A	N/A	N/A
	Change from prior year	5.4%	10.2%	24.8%			
	Days on Market	17	14	11	13	10	8
Change from prior year	21.4%	27.3%	-31.3%	30.0%	25.0%	-33.3%	
	Percent of List	99.5%	100.0%	99.9%	99.9%	100.0%	100.0%
Change from prior year	-0.5%	0.1%	-0.1%	-0.1%	0.0%	0.0%	
	Percent of Original	98.3%	98.3%	98.8%	98.8%	99.5%	100.0%
Change from prior year	0.0%	-0.5%	-0.3%	-0.7%	-0.5%	0.3%	

Note: Year-to-date statistics cannot be calculated for Active Listings, Months' Supply and Pending Contracts.



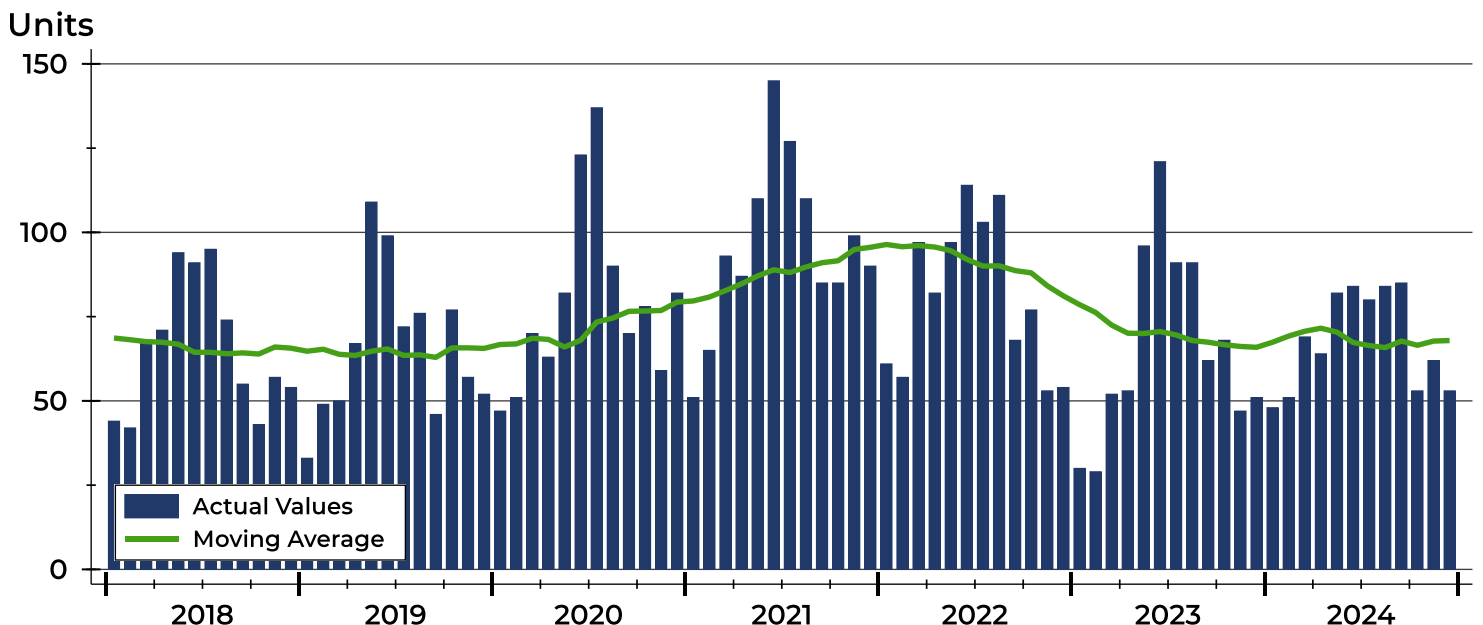
Riley County Closed Listings Analysis

Summary Statistics for Closed Listings		December			Year-to-Date		
		2024	2023	Change	2024	2023	Change
Closed Listings		53	51	3.9%	815	791	3.0%
Volume (1,000s)		15,611	14,108	10.7%	235,909	219,296	7.6%
Months' Supply		1.9	2.0	-5.0%	N/A	N/A	N/A
Average	Sale Price	294,555	276,629	6.5%	289,459	277,238	4.4%
	Days on Market	38	39	-2.6%	38	33	15.2%
	Percent of List	98.3%	98.3%	0.0%	98.5%	98.7%	-0.2%
	Percent of Original	96.7%	96.1%	0.6%	97.4%	97.4%	0.0%
Median	Sale Price	290,000	237,500	22.1%	260,000	244,900	6.2%
	Days on Market	17	14	21.4%	13	10	30.0%
	Percent of List	99.5%	100.0%	-0.5%	99.9%	100.0%	-0.1%
	Percent of Original	98.3%	98.3%	0.0%	98.8%	99.5%	-0.7%

A total of 53 homes sold in Riley County in December, up from 51 units in December 2023. Total sales volume rose to \$15.6 million compared to \$14.1 million in the previous year.

The median sales price in December was \$290,000, up 22.1% compared to the prior year. Median days on market was 17 days, down from 24 days in November, but up from 14 in December 2023.

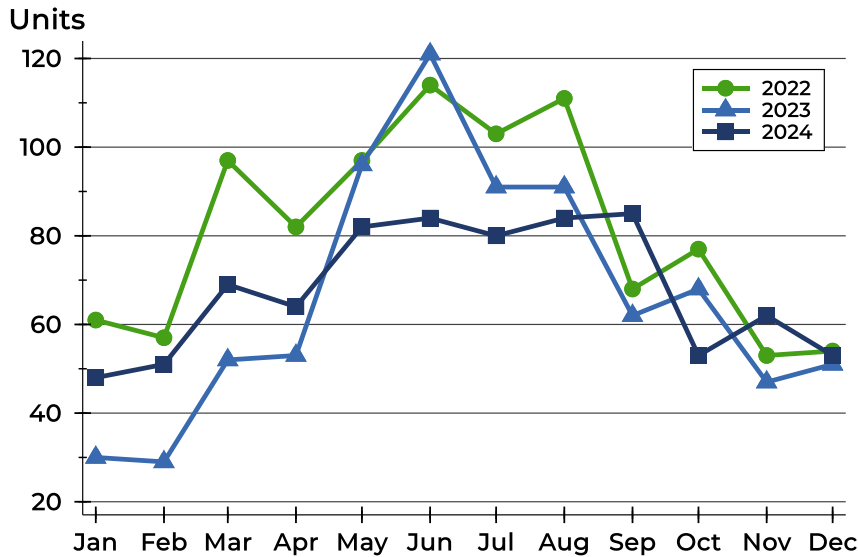
History of Closed Listings





Riley County Closed Listings Analysis

Closed Listings by Month



Month	2022	2023	2024
January	61	30	48
February	57	29	51
March	97	52	69
April	82	53	64
May	97	96	82
June	114	121	84
July	103	91	80
August	111	91	84
September	68	62	85
October	77	68	53
November	53	47	62
December	54	51	53

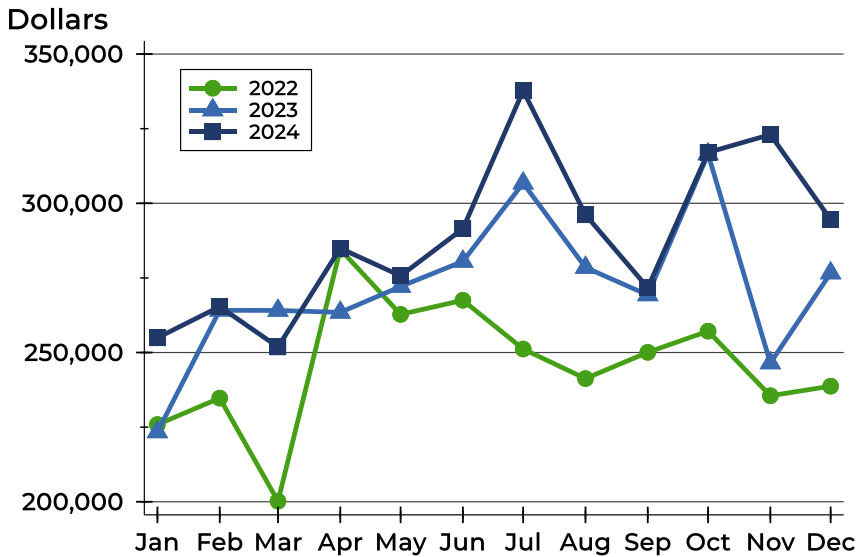
Closed Listings by Price Range

Price Range	Sales		Months' Supply	Sale Price		Days on Market		Price as % of List		Price as % of Orig.	
	Number	Percent		Average	Median	Avg.	Med.	Avg.	Med.	Avg.	Med.
Below \$25,000	0	0.0%	N/A	N/A	N/A	N/A	N/A	N/A	N/A	N/A	N/A
\$25,000-\$49,999	0	0.0%	N/A	N/A	N/A	N/A	N/A	N/A	N/A	N/A	N/A
\$50,000-\$99,999	2	3.8%	2.9	71,000	71,000	20	20	97.7%	97.7%	97.7%	97.7%
\$100,000-\$124,999	2	3.8%	2.3	106,500	106,500	7	7	92.6%	92.6%	92.6%	92.6%
\$125,000-\$149,999	1	1.9%	3.2	141,000	141,000	1	1	100.0%	100.0%	100.0%	100.0%
\$150,000-\$174,999	2	3.8%	1.8	163,750	163,750	45	45	94.2%	94.2%	92.7%	92.7%
\$175,000-\$199,999	3	5.7%	1.9	182,333	180,000	12	13	98.5%	98.6%	97.6%	96.0%
\$200,000-\$249,999	10	18.9%	0.8	228,870	230,000	22	12	99.0%	100.0%	98.8%	99.8%
\$250,000-\$299,999	12	22.6%	1.8	280,567	288,250	39	35	99.0%	99.8%	97.0%	98.0%
\$300,000-\$399,999	13	24.5%	2.8	349,838	350,000	69	9	98.2%	98.9%	95.0%	97.6%
\$400,000-\$499,999	6	11.3%	0.7	466,583	475,000	38	16	97.3%	98.0%	95.9%	96.4%
\$500,000-\$749,999	2	3.8%	2.8	619,000	619,000	16	16	102.1%	102.1%	102.1%	102.1%
\$750,000-\$999,999	0	0.0%	N/A	N/A	N/A	N/A	N/A	N/A	N/A	N/A	N/A
\$1,000,000 and up	0	0.0%	N/A	N/A	N/A	N/A	N/A	N/A	N/A	N/A	N/A



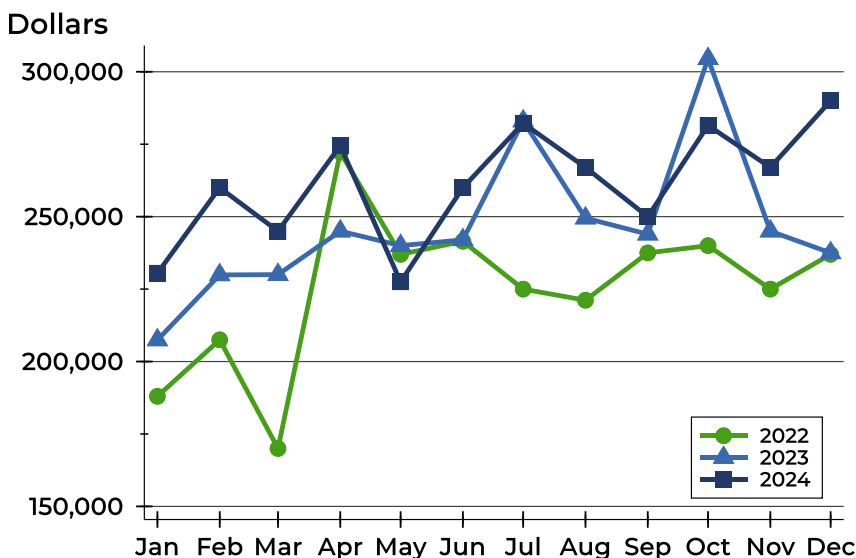
Riley County Closed Listings Analysis

Average Price



Month	2022	2023	2024
January	225,875	223,398	254,923
February	234,723	264,153	265,385
March	200,196	264,104	251,866
April	284,561	263,458	284,918
May	262,771	272,119	275,698
June	267,511	280,542	291,474
July	251,180	306,725	337,739
August	241,275	278,493	296,153
September	250,074	269,304	271,717
October	257,164	316,505	317,039
November	235,522	246,497	323,027
December	238,726	276,629	294,555

Median Price

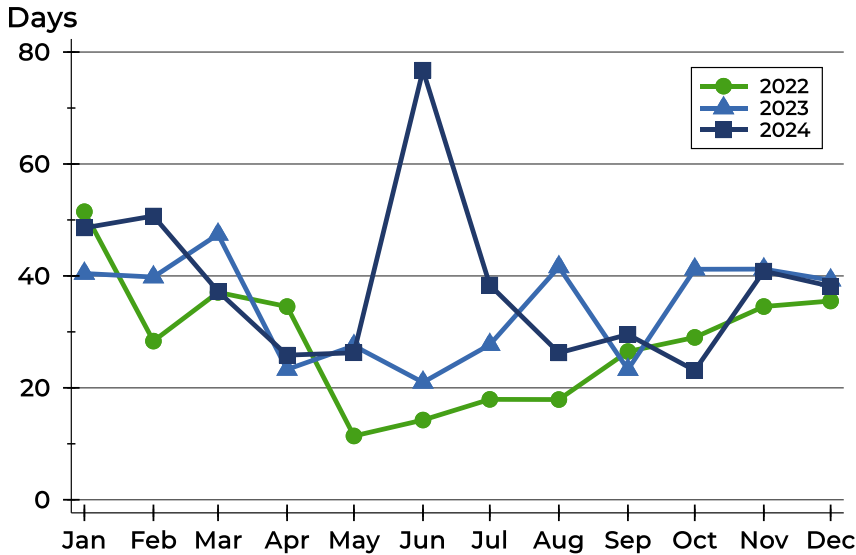


Month	2022	2023	2024
January	188,000	207,450	230,500
February	207,500	229,900	260,000
March	170,000	230,000	245,000
April	272,250	245,000	274,500
May	237,000	240,000	227,500
June	241,500	242,000	260,000
July	225,000	283,000	282,250
August	221,159	249,500	267,000
September	237,500	243,950	250,000
October	240,000	304,500	281,500
November	225,000	245,000	267,000
December	237,000	237,500	290,000



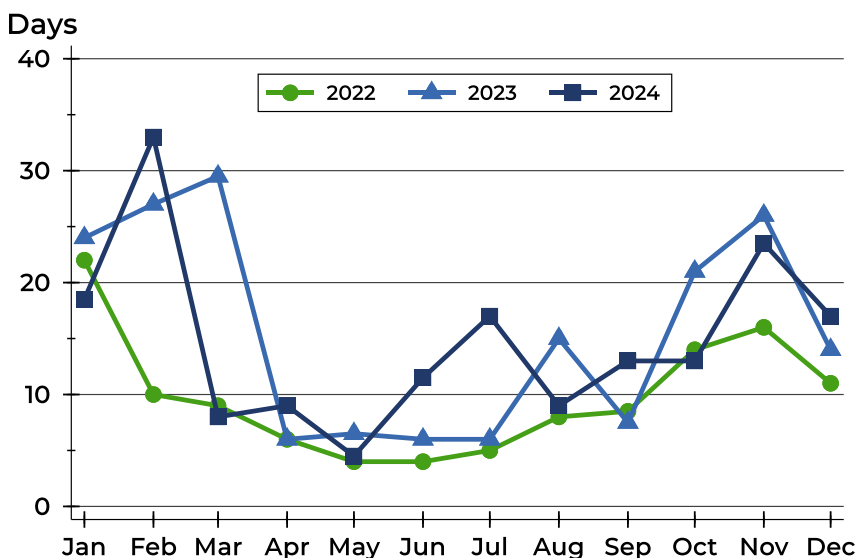
Riley County Closed Listings Analysis

Average DOM



Month	2022	2023	2024
January	51	40	49
February	28	40	51
March	37	47	37
April	35	23	26
May	11	28	26
June	14	21	77
July	18	28	38
August	18	42	26
September	26	23	30
October	29	41	23
November	35	41	41
December	36	39	38

Median DOM



Month	2022	2023	2024
January	22	24	19
February	10	27	33
March	9	30	8
April	6	6	9
May	4	7	5
June	4	6	12
July	5	6	17
August	8	15	9
September	9	8	13
October	14	21	13
November	16	26	24
December	11	14	17



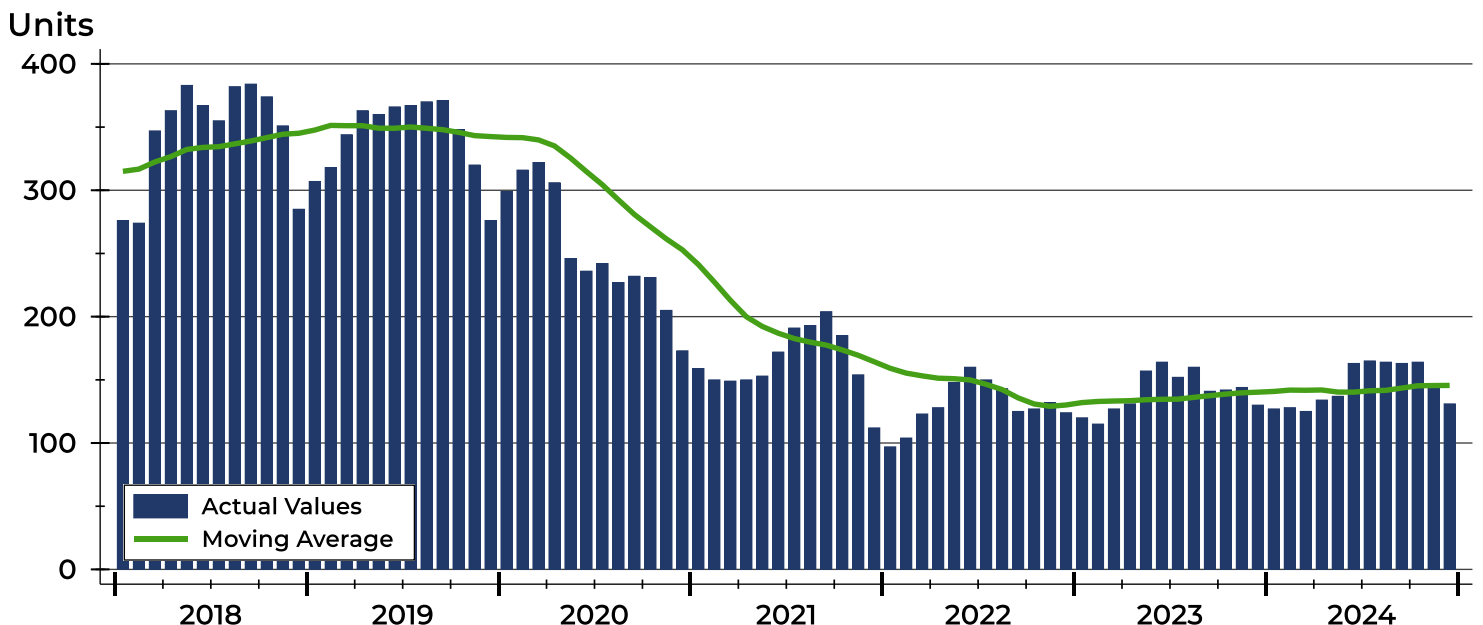
Riley County Active Listings Analysis

Summary Statistics for Active Listings		2024	2023	Change
Active Listings		131	130	0.8%
Volume (1,000s)		42,720	40,793	4.7%
Months' Supply		1.9	2.0	-5.0%
Average	List Price	326,110	313,791	3.9%
	Days on Market	86	88	-2.3%
	Percent of Original	97.9%	97.6%	0.3%
Median	List Price	289,900	275,000	5.4%
	Days on Market	63	61	3.3%
	Percent of Original	100.0%	100.0%	0.0%

A total of 131 homes were available for sale in Riley County at the end of December. This represents a 1.9 months' supply of active listings.

The median list price of homes on the market at the end of December was \$289,900, up 5.4% from 2023. The typical time on market for active listings was 63 days, up from 61 days a year earlier.

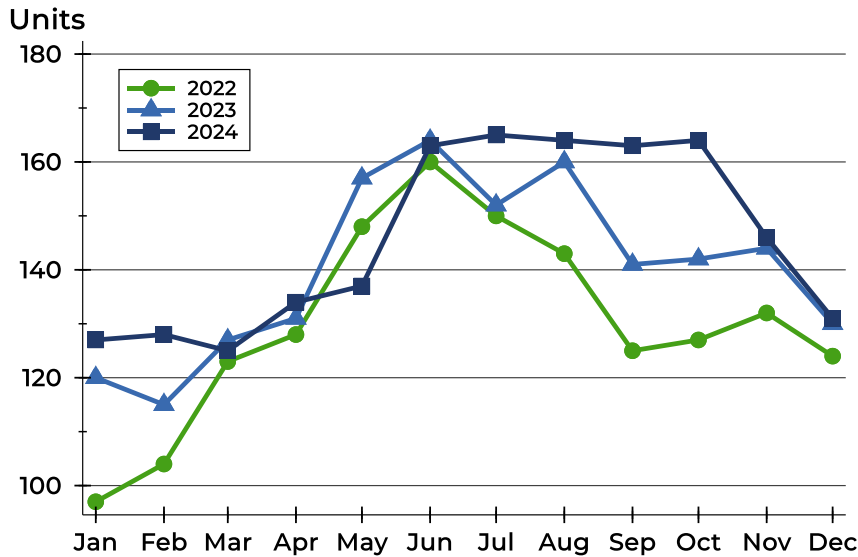
History of Active Listings





Riley County Active Listings Analysis

Active Listings by Month



Month	2022	2023	2024
January	97	120	127
February	104	115	128
March	123	127	125
April	128	131	134
May	148	157	137
June	160	164	163
July	150	152	165
August	143	160	164
September	125	141	163
October	127	142	164
November	132	144	146
December	124	130	131

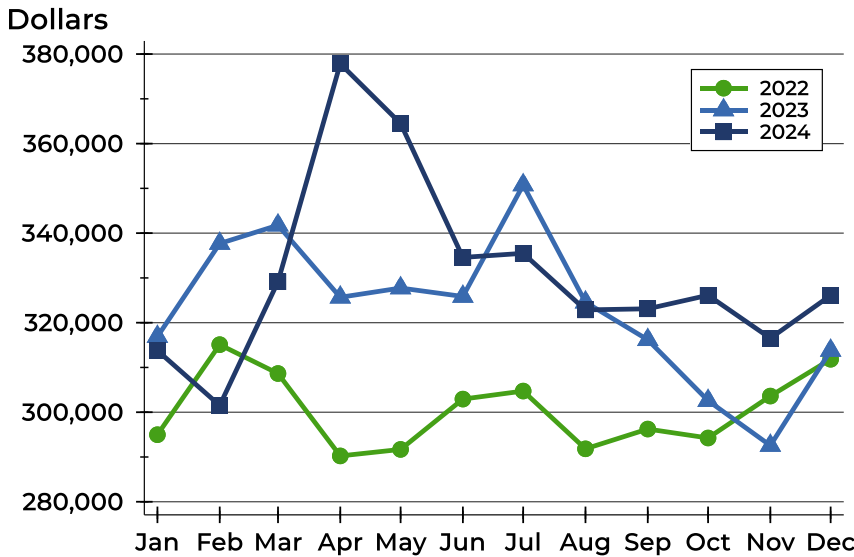
Active Listings by Price Range

Price Range	Active Listings Number	Active Listings Percent	Months' Supply	List Price Average	List Price Median	Days on Market Avg.	Days on Market Med.	Price as % of Orig. Avg.	Price as % of Orig. Med.
Below \$25,000	0	0.0%	N/A	N/A	N/A	N/A	N/A	N/A	N/A
\$25,000-\$49,999	0	0.0%	N/A	N/A	N/A	N/A	N/A	N/A	N/A
\$50,000-\$99,999	5	3.8%	2.9	90,760	96,500	83	71	94.8%	100.0%
\$100,000-\$124,999	5	3.8%	2.3	113,760	115,000	35	10	93.2%	100.0%
\$125,000-\$149,999	7	5.3%	3.2	138,529	135,000	89	92	98.0%	100.0%
\$150,000-\$174,999	8	6.1%	1.8	163,363	166,000	106	60	98.6%	100.0%
\$175,000-\$199,999	13	9.9%	1.9	186,635	185,000	111	83	96.7%	100.0%
\$200,000-\$249,999	11	8.4%	0.8	231,045	232,000	73	54	98.6%	100.0%
\$250,000-\$299,999	22	16.8%	1.8	273,668	272,400	88	64	99.5%	100.0%
\$300,000-\$399,999	38	29.0%	2.8	356,063	357,950	90	75	98.0%	100.0%
\$400,000-\$499,999	4	3.1%	0.7	434,975	432,500	32	12	99.0%	100.0%
\$500,000-\$749,999	12	9.2%	2.8	608,325	567,500	66	55	98.9%	100.0%
\$750,000-\$999,999	4	3.1%	N/A	890,625	891,500	96	101	92.2%	94.4%
\$1,000,000 and up	2	1.5%	N/A	1,150,000	1,150,000	175	175	100.0%	100.0%



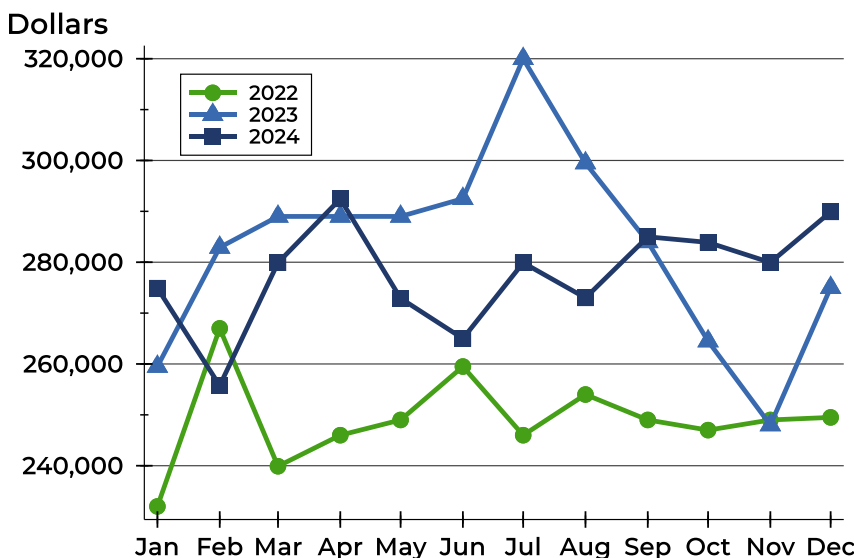
Riley County Active Listings Analysis

Average Price



Month	2022	2023	2024
January	294,980	316,889	313,781
February	315,098	337,680	301,514
March	308,649	341,768	329,145
April	290,244	325,675	377,844
May	291,693	327,740	364,496
June	302,934	325,855	334,580
July	304,729	350,757	335,498
August	291,827	324,571	322,859
September	296,245	316,188	323,097
October	294,245	302,591	326,126
November	303,615	292,564	316,524
December	311,834	313,791	326,110

Median Price

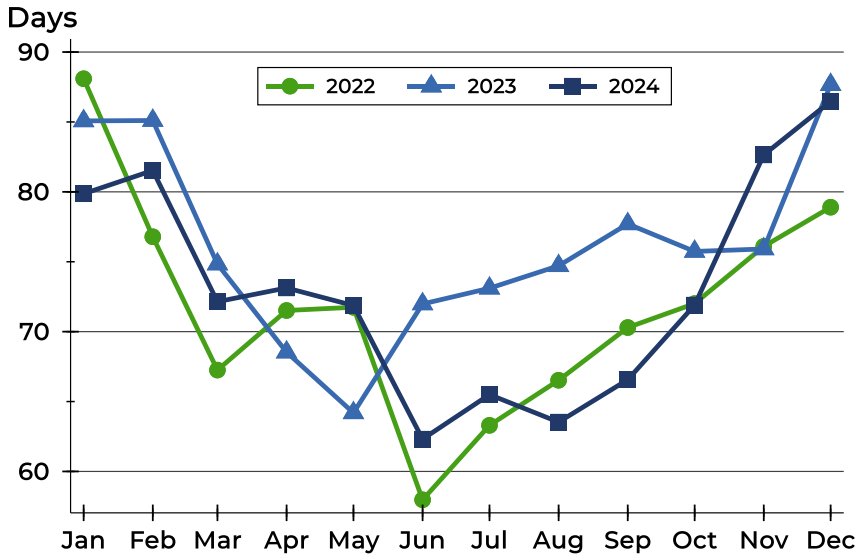


Month	2022	2023	2024
January	232,000	259,500	274,900
February	267,000	282,900	255,750
March	239,900	289,000	279,900
April	246,000	289,000	292,450
May	249,000	289,000	272,900
June	259,500	292,500	265,000
July	246,000	320,000	279,900
August	254,000	299,500	273,000
September	249,000	284,000	285,000
October	247,000	264,500	283,900
November	249,000	248,000	279,950
December	249,500	275,000	289,900



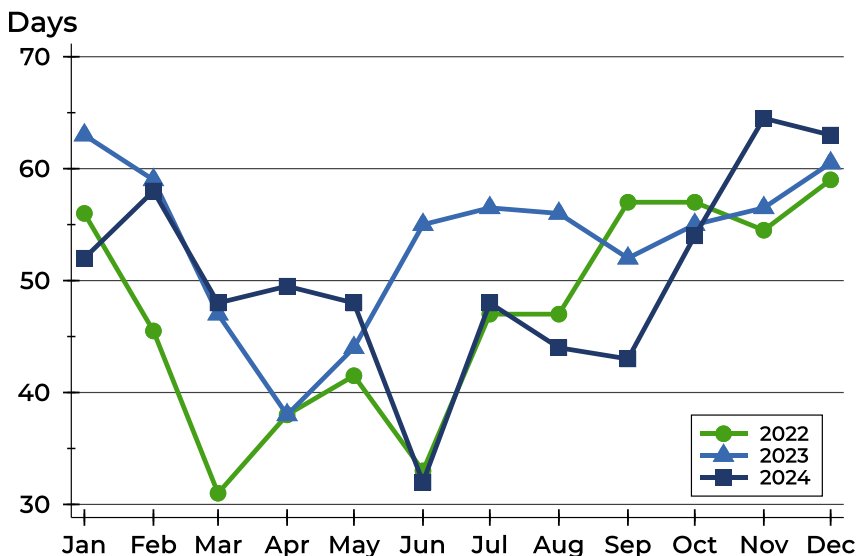
Riley County Active Listings Analysis

Average DOM



Month	2022	2023	2024
January	88	85	80
February	77	85	82
March	67	75	72
April	72	69	73
May	72	64	72
June	58	72	62
July	63	73	65
August	67	75	64
September	70	78	67
October	72	76	72
November	76	76	83
December	79	88	86

Median DOM

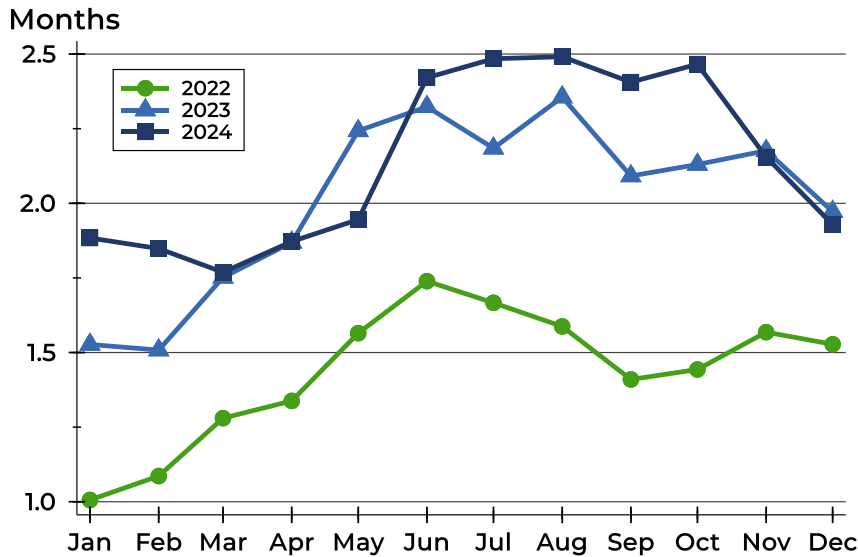


Month	2022	2023	2024
January	56	63	52
February	46	59	58
March	31	47	48
April	38	38	50
May	42	44	48
June	33	55	32
July	47	57	48
August	47	56	44
September	57	52	43
October	57	55	54
November	55	57	65
December	59	61	63



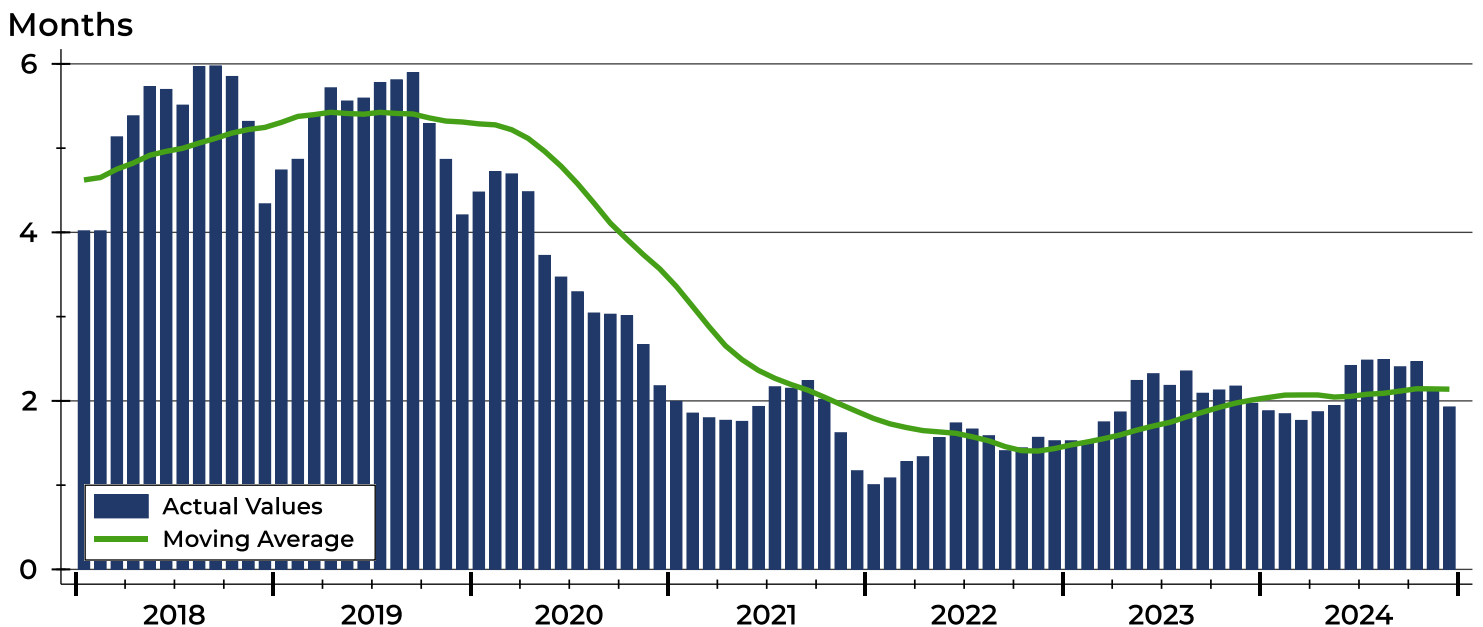
Riley County Months' Supply Analysis

Months' Supply by Month



Month	2022	2023	2024
January	1.0	1.5	1.9
February	1.1	1.5	1.8
March	1.3	1.8	1.8
April	1.3	1.9	1.9
May	1.6	2.2	1.9
June	1.7	2.3	2.4
July	1.7	2.2	2.5
August	1.6	2.4	2.5
September	1.4	2.1	2.4
October	1.4	2.1	2.5
November	1.6	2.2	2.2
December	1.5	2.0	1.9

History of Month's Supply





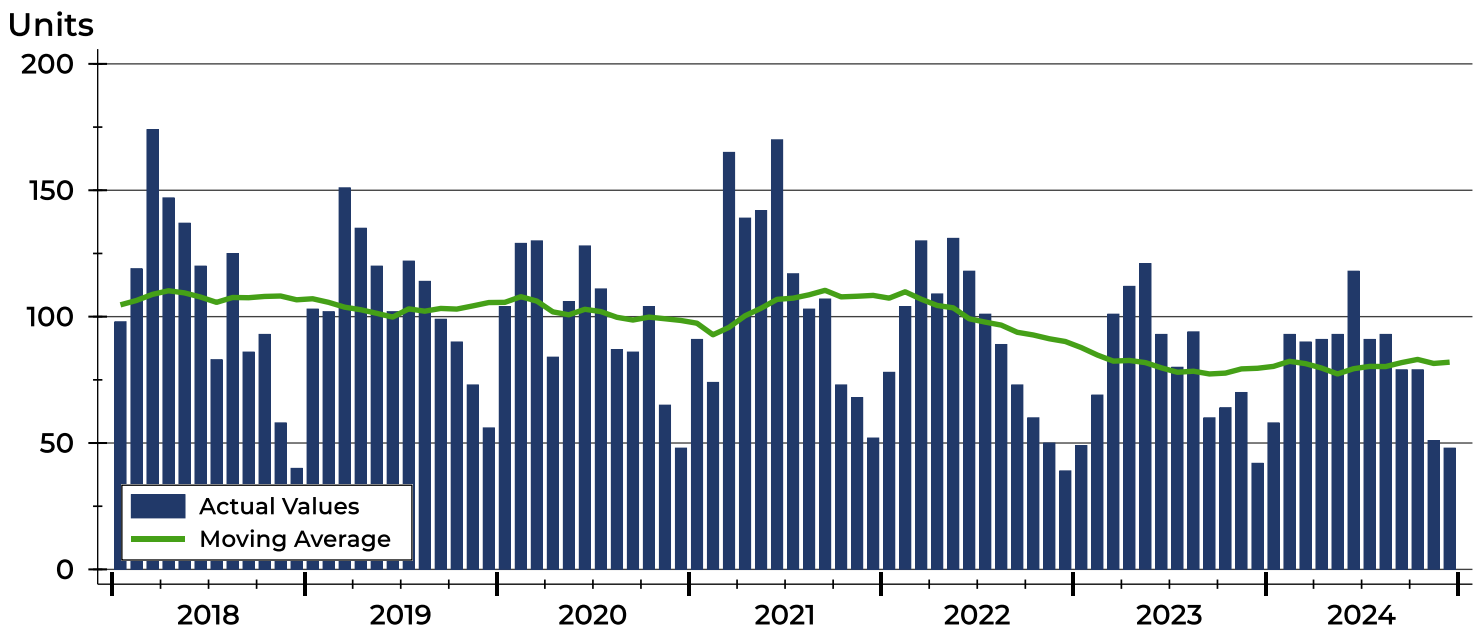
Riley County New Listings Analysis

Summary Statistics for New Listings		2024	December 2023	Change
Current Month	New Listings	48	42	14.3%
	Volume (1,000s)	15,124	11,670	29.6%
	Average List Price	315,088	277,852	13.4%
	Median List Price	289,950	255,000	13.7%
Year-to-Date	New Listings	984	955	3.0%
	Volume (1,000s)	302,950	270,852	11.9%
	Average List Price	307,876	283,614	8.6%
	Median List Price	269,950	250,000	8.0%

A total of 48 new listings were added in Riley County during December, up 14.3% from the same month in 2023. Year-to-date Riley County has seen 984 new listings.

The median list price of these homes was \$289,950 up from \$255,000 in 2023.

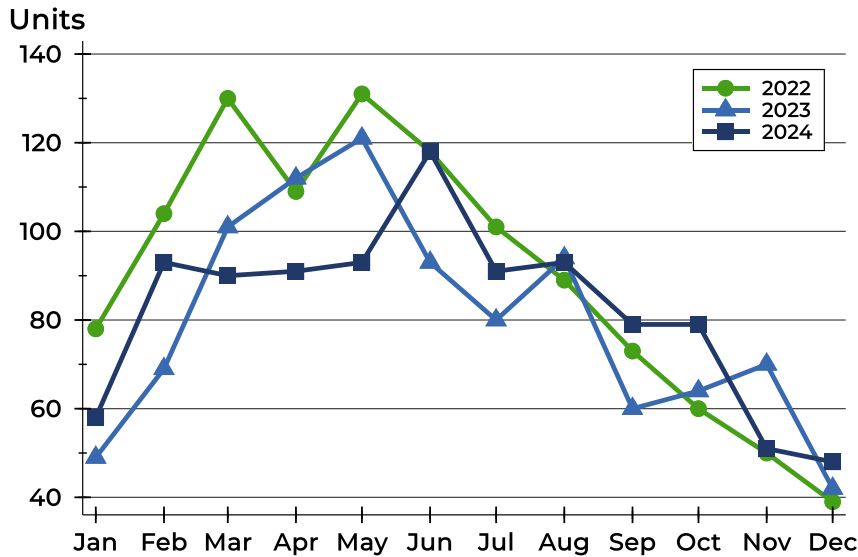
History of New Listings





Riley County New Listings Analysis

New Listings by Month



Month	2022	2023	2024
January	78	49	58
February	104	69	93
March	130	101	90
April	109	112	91
May	131	121	93
June	118	93	118
July	101	80	91
August	89	94	93
September	73	60	79
October	60	64	79
November	50	70	51
December	39	42	48

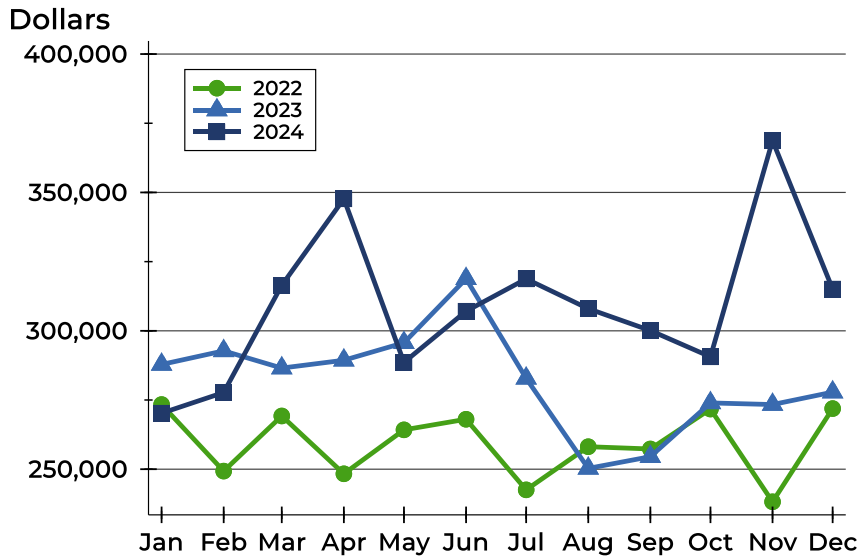
New Listings by Price Range

Price Range	New Listings		List Price		Days on Market		Price as % of Orig.	
	Number	Percent	Average	Median	Avg.	Med.	Avg.	Med.
Below \$25,000	0	0.0%	N/A	N/A	N/A	N/A	N/A	N/A
\$25,000-\$49,999	0	0.0%	N/A	N/A	N/A	N/A	N/A	N/A
\$50,000-\$99,999	0	0.0%	N/A	N/A	N/A	N/A	N/A	N/A
\$100,000-\$124,999	0	0.0%	N/A	N/A	N/A	N/A	N/A	N/A
\$125,000-\$149,999	3	6.3%	139,967	140,000	21	29	97.8%	100.0%
\$150,000-\$174,999	1	2.1%	168,000	168,000	8	8	100.0%	100.0%
\$175,000-\$199,999	5	10.4%	188,880	189,900	15	10	100.0%	100.0%
\$200,000-\$249,999	9	18.8%	227,827	220,000	14	8	99.0%	100.0%
\$250,000-\$299,999	8	16.7%	280,150	282,000	58	10	99.4%	100.0%
\$300,000-\$399,999	13	27.1%	363,692	365,000	15	16	100.6%	100.0%
\$400,000-\$499,999	4	8.3%	424,950	424,900	10	6	100.0%	100.0%
\$500,000-\$749,999	4	8.3%	523,125	525,000	14	14	100.0%	100.0%
\$750,000-\$999,999	1	2.1%	780,000	780,000	27	27	100.0%	100.0%
\$1,000,000 and up	0	0.0%	N/A	N/A	N/A	N/A	N/A	N/A



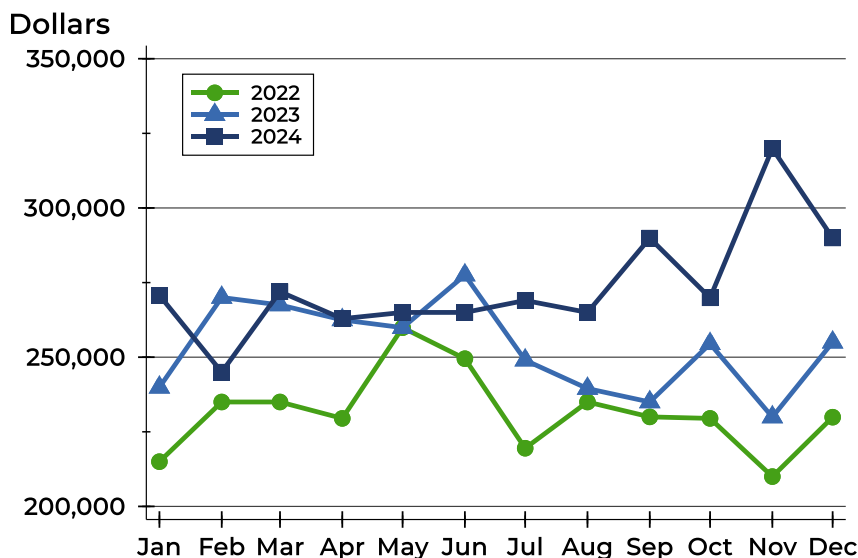
Riley County New Listings Analysis

Average Price



Month	2022	2023	2024
January	273,365	287,852	270,247
February	249,317	292,767	277,719
March	269,234	286,544	316,455
April	248,339	289,376	347,701
May	264,226	295,696	288,602
June	268,046	318,828	307,088
July	242,536	282,840	318,773
August	258,135	250,303	308,009
September	257,311	254,518	300,096
October	271,739	273,948	290,610
November	238,235	273,362	368,752
December	271,909	277,852	315,088

Median Price



Month	2022	2023	2024
January	215,000	239,900	270,750
February	235,000	270,000	245,000
March	235,000	267,500	271,950
April	229,500	262,500	262,900
May	259,900	259,900	265,000
June	249,500	277,500	265,000
July	219,500	249,000	269,000
August	235,000	239,500	265,000
September	230,000	235,000	289,900
October	229,500	254,500	269,900
November	210,000	229,950	319,900
December	229,900	255,000	289,950



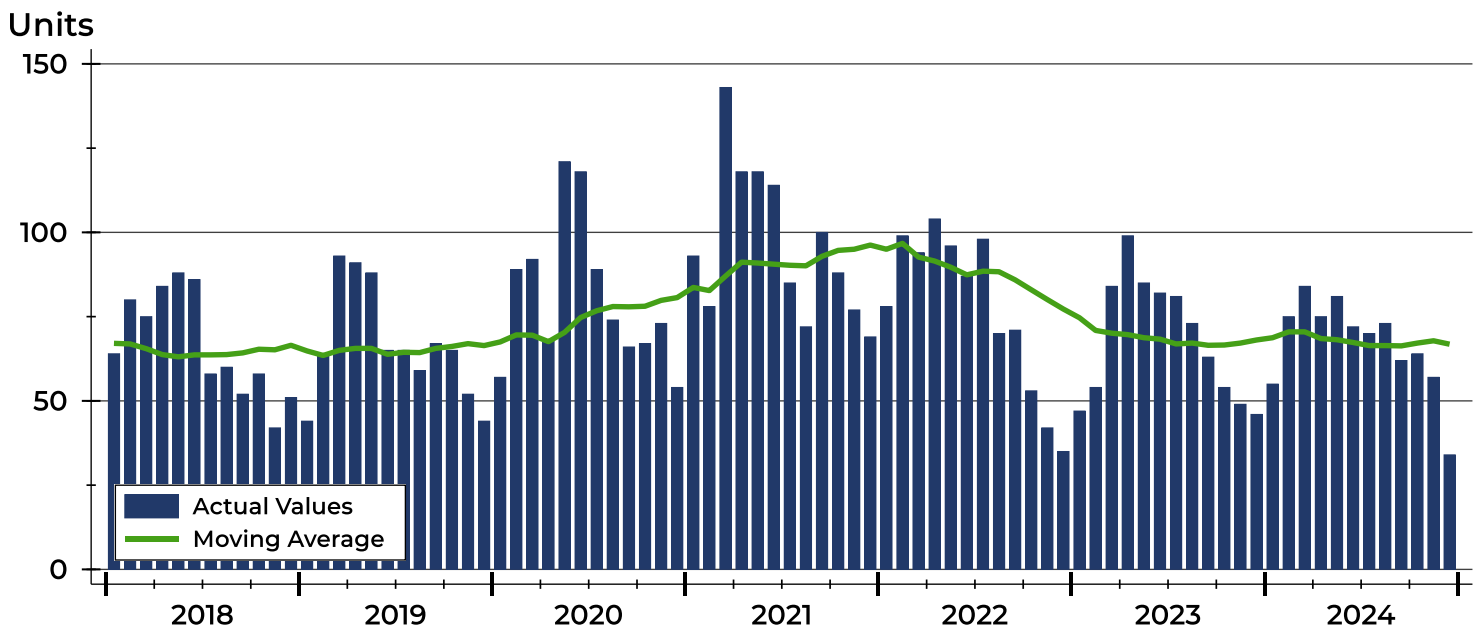
Riley County Contracts Written Analysis

Summary Statistics for Contracts Written		December			Year-to-Date		
		2024	2023	Change	2024	2023	Change
Contracts Written		34	46	-26.1%	802	817	-1.8%
Volume (1,000s)		9,499	10,645	-10.8%	239,182	229,561	4.2%
Average	Sale Price	279,395	231,409	20.7%	298,232	280,980	6.1%
	Days on Market	37	42	-11.9%	38	33	15.2%
	Percent of Original	98.6%	93.1%	5.9%	97.7%	97.3%	0.4%
Median	Sale Price	246,573	217,000	13.6%	265,000	248,500	6.6%
	Days on Market	9	22	-59.1%	12	10	20.0%
	Percent of Original	100.0%	97.2%	2.9%	99.3%	99.4%	-0.1%

A total of 34 contracts for sale were written in Riley County during the month of December, down from 46 in 2023. The median list price of these homes was \$246,573, up from \$217,000 the prior year.

Half of the homes that went under contract in December were on the market less than 9 days, compared to 22 days in December 2023.

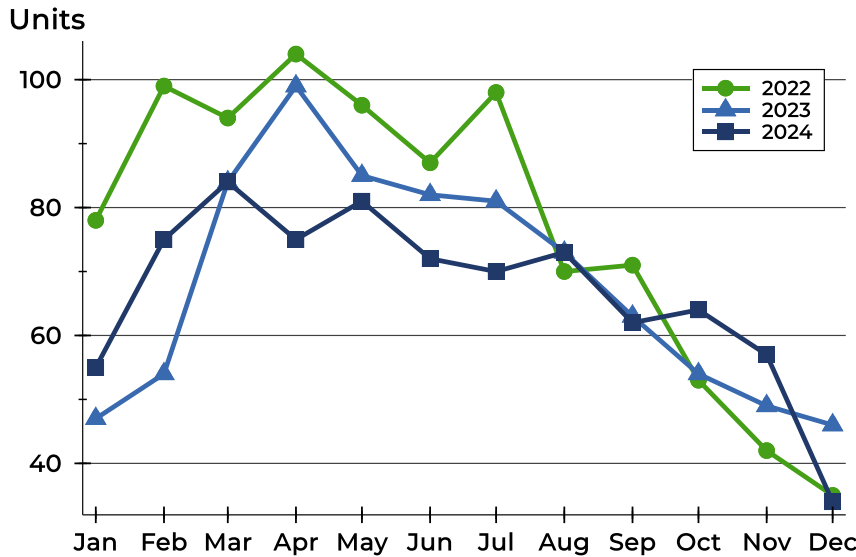
History of Contracts Written





Riley County Contracts Written Analysis

Contracts Written by Month



Month	2022	2023	2024
January	78	47	55
February	99	54	75
March	94	84	84
April	104	99	75
May	96	85	81
June	87	82	72
July	98	81	70
August	70	73	73
September	71	63	62
October	53	54	64
November	42	49	57
December	35	46	34

Contracts Written by Price Range

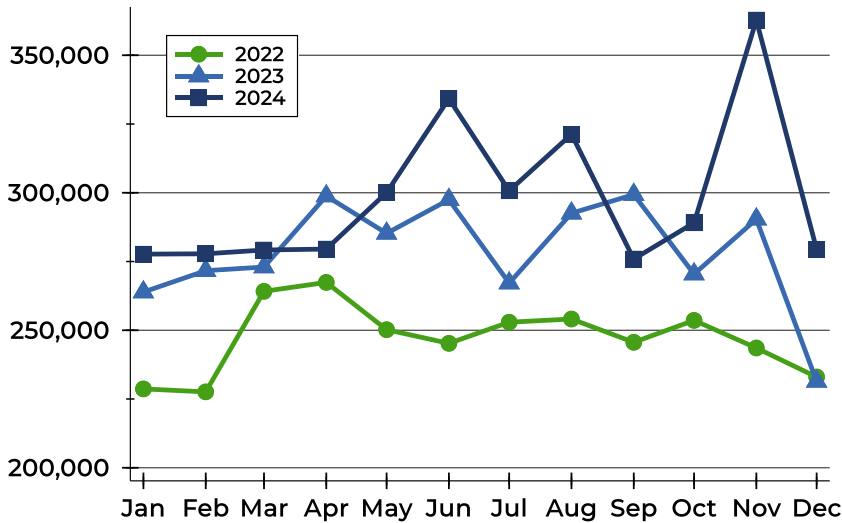
Price Range	Contracts Written		List Price		Days on Market		Price as % of Orig.	
	Number	Percent	Average	Median	Avg.	Med.	Avg.	Med.
Below \$25,000	0	0.0%	N/A	N/A	N/A	N/A	N/A	N/A
\$25,000-\$49,999	0	0.0%	N/A	N/A	N/A	N/A	N/A	N/A
\$50,000-\$99,999	0	0.0%	N/A	N/A	N/A	N/A	N/A	N/A
\$100,000-\$124,999	1	2.9%	120,000	120,000	39	39	100.0%	100.0%
\$125,000-\$149,999	2	5.9%	139,500	139,500	47	47	100.0%	100.0%
\$150,000-\$174,999	0	0.0%	N/A	N/A	N/A	N/A	N/A	N/A
\$175,000-\$199,999	5	14.7%	187,780	189,900	58	10	97.8%	100.0%
\$200,000-\$249,999	10	29.4%	226,435	219,950	41	14	98.4%	100.0%
\$250,000-\$299,999	4	11.8%	281,850	287,500	24	21	99.2%	100.0%
\$300,000-\$399,999	7	20.6%	363,129	355,000	19	2	99.2%	100.0%
\$400,000-\$499,999	4	11.8%	428,225	436,500	45	36	97.3%	98.3%
\$500,000-\$749,999	1	2.9%	515,000	515,000	2	2	100.0%	100.0%
\$750,000-\$999,999	0	0.0%	N/A	N/A	N/A	N/A	N/A	N/A
\$1,000,000 and up	0	0.0%	N/A	N/A	N/A	N/A	N/A	N/A



Riley County Contracts Written Analysis

Average Price

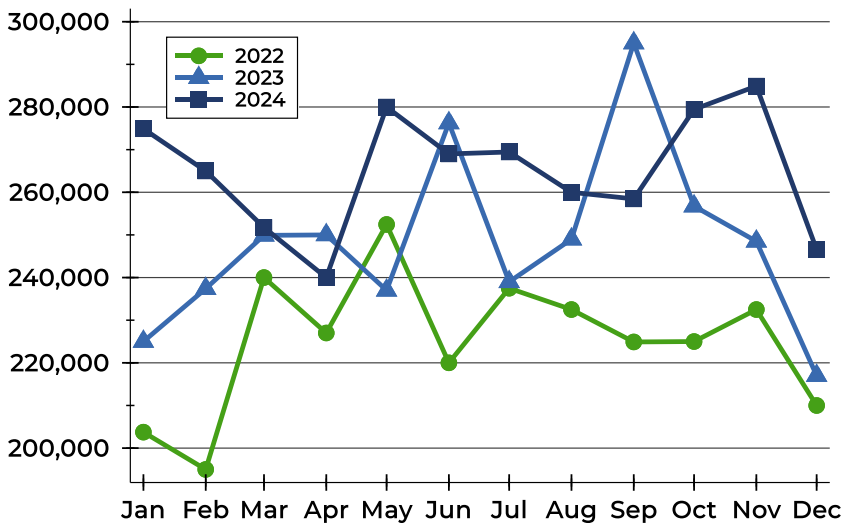
Dollars



Month	2022	2023	2024
January	228,668	263,891	277,683
February	227,600	271,664	277,810
March	264,169	273,006	279,183
April	267,411	298,818	279,529
May	250,209	285,244	300,060
June	245,241	297,489	334,209
July	252,925	267,157	300,715
August	254,097	292,554	321,281
September	245,622	299,340	275,903
October	253,600	270,441	289,081
November	243,560	290,402	362,796
December	233,020	231,409	279,395

Median Price

Dollars

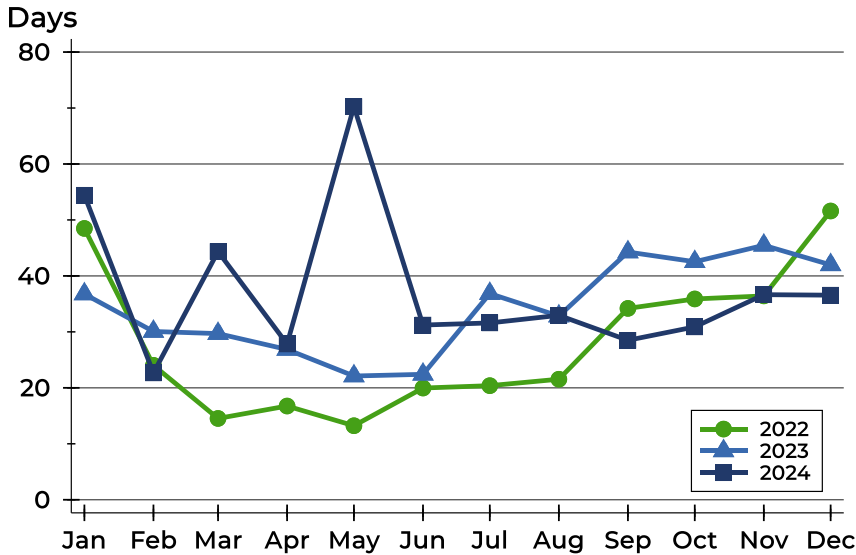


Month	2022	2023	2024
January	203,750	225,000	274,900
February	195,000	237,400	265,000
March	240,000	249,900	251,750
April	227,000	250,000	240,000
May	252,450	237,000	280,000
June	220,000	276,250	269,000
July	237,500	239,000	269,450
August	232,500	249,000	260,000
September	224,900	295,000	258,450
October	225,000	256,750	279,450
November	232,500	248,500	284,900
December	210,000	217,000	246,573



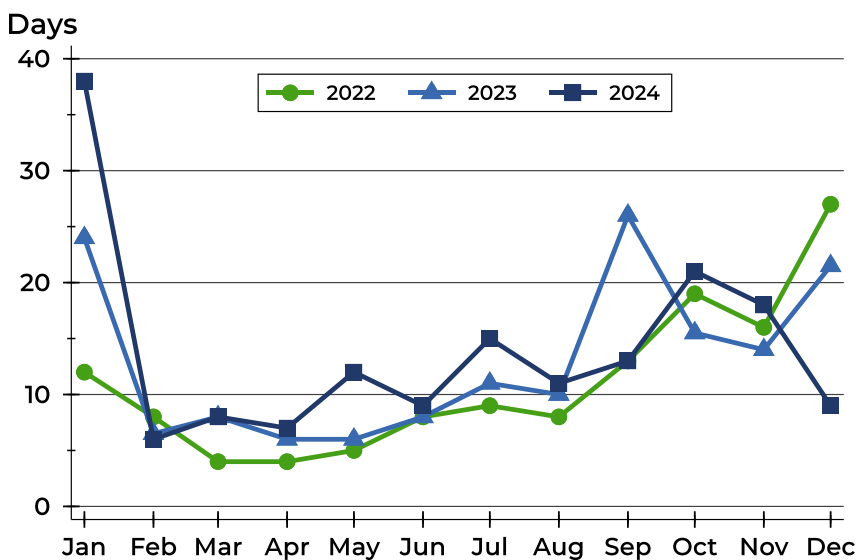
Riley County Contracts Written Analysis

Average DOM



Month	2022	2023	2024
January	48	37	54
February	24	30	23
March	15	30	44
April	17	27	28
May	13	22	70
June	20	22	31
July	20	37	32
August	22	33	33
September	34	44	29
October	36	43	31
November	36	45	37
December	52	42	37

Median DOM



Month	2022	2023	2024
January	12	24	38
February	8	7	6
March	4	8	8
April	4	6	7
May	5	6	12
June	8	8	9
July	9	11	15
August	8	10	11
September	13	26	13
October	19	16	21
November	16	14	18
December	27	22	9



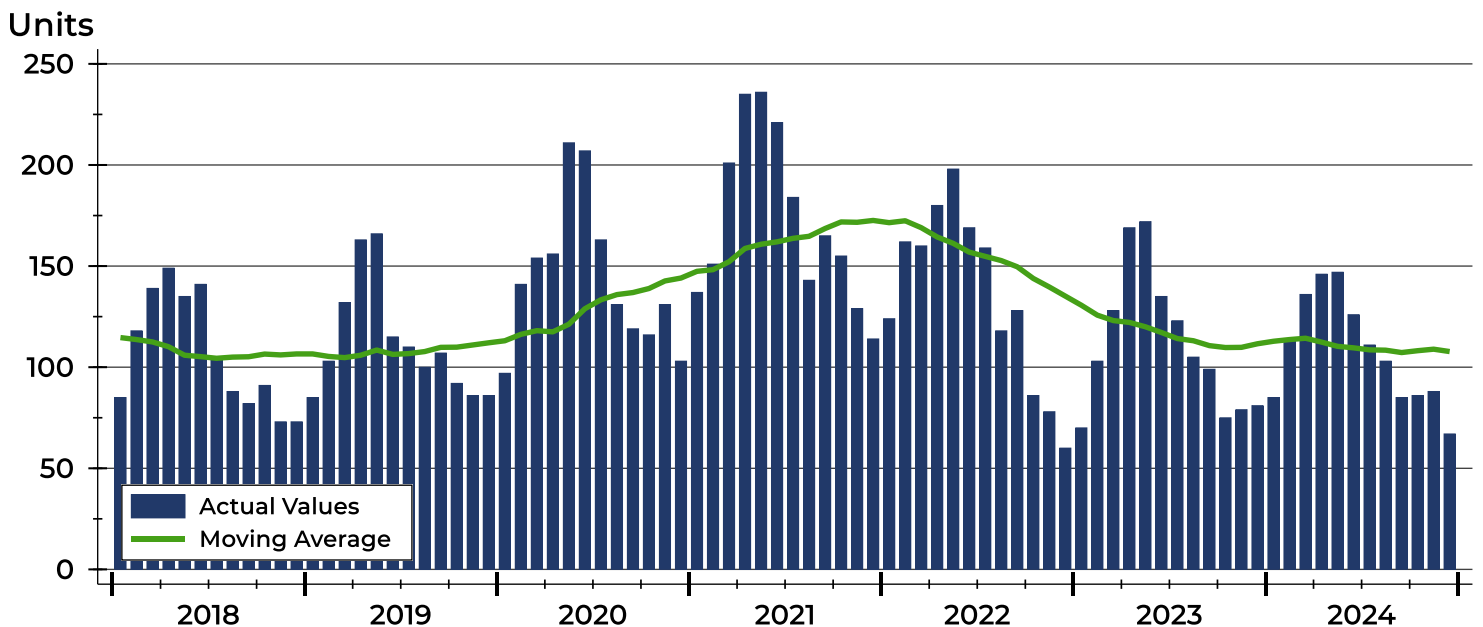
Riley County Pending Contracts Analysis

Summary Statistics for Pending Contracts		End of December		
		2024	2023	Change
Pending Contracts		67	81	-17.3%
Volume (1,000s)		20,641	21,472	-3.9%
Average	List Price	308,070	265,080	16.2%
	Days on Market	41	46	-10.9%
	Percent of Original	98.5%	98.0%	0.5%
Median	List Price	259,000	229,900	12.7%
	Days on Market	13	20	-35.0%
	Percent of Original	100.0%	100.0%	0.0%

A total of 67 listings in Riley County had contracts pending at the end of December, down from 81 contracts pending at the end of December 2023.

Pending contracts reflect listings with a contract in place at the end of the month. In contrast, contracts written measures the number of listings put under contract during the month.

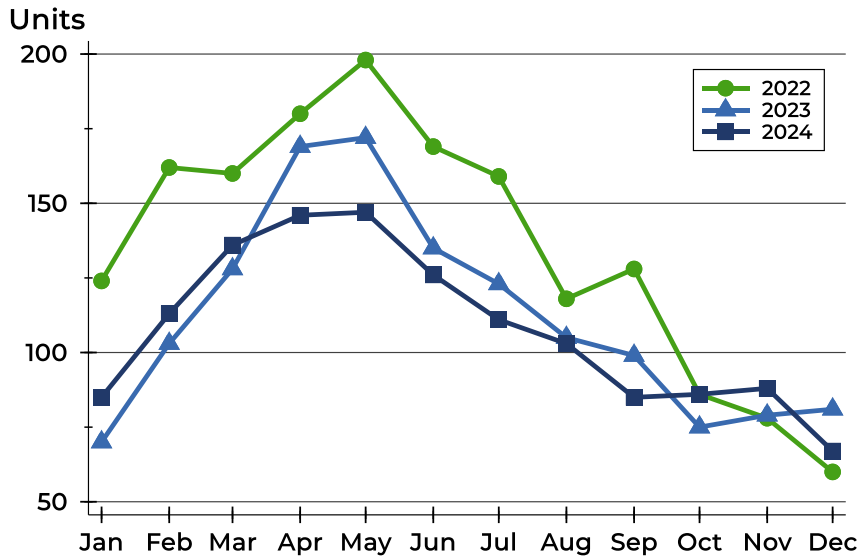
History of Pending Contracts





Riley County Pending Contracts Analysis

Pending Contracts by Month



Month	2022	2023	2024
January	124	70	85
February	162	103	113
March	160	128	136
April	180	169	146
May	198	172	147
June	169	135	126
July	159	123	111
August	118	105	103
September	128	99	85
October	86	75	86
November	78	79	88
December	60	81	67

Pending Contracts by Price Range

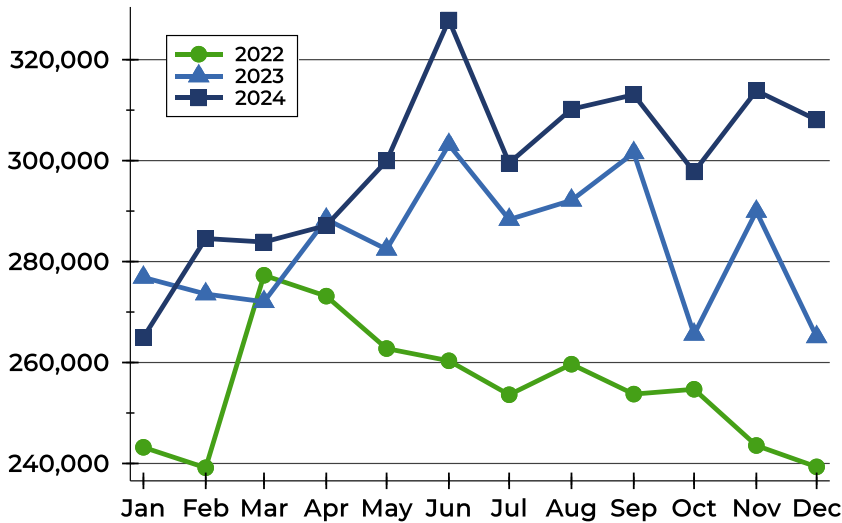
Price Range	Pending Contracts		List Price		Days on Market		Price as % of Orig.	
	Number	Percent	Average	Median	Avg.	Med.	Avg.	Med.
Below \$25,000	0	0.0%	N/A	N/A	N/A	N/A	N/A	N/A
\$25,000-\$49,999	0	0.0%	N/A	N/A	N/A	N/A	N/A	N/A
\$50,000-\$99,999	0	0.0%	N/A	N/A	N/A	N/A	N/A	N/A
\$100,000-\$124,999	1	1.5%	120,000	120,000	39	39	100.0%	100.0%
\$125,000-\$149,999	3	4.5%	136,233	130,000	34	8	100.0%	100.0%
\$150,000-\$174,999	3	4.5%	156,667	155,000	38	27	99.0%	100.0%
\$175,000-\$199,999	8	11.9%	185,988	184,950	65	32	98.6%	100.0%
\$200,000-\$249,999	17	25.4%	225,709	219,900	38	13	98.2%	100.0%
\$250,000-\$299,999	8	11.9%	275,175	279,950	61	11	99.6%	100.0%
\$300,000-\$399,999	13	19.4%	360,377	350,000	25	4	97.8%	100.0%
\$400,000-\$499,999	10	14.9%	449,675	439,450	44	24	98.0%	100.0%
\$500,000-\$749,999	3	4.5%	606,333	635,000	21	7	98.6%	100.0%
\$750,000-\$999,999	0	0.0%	N/A	N/A	N/A	N/A	N/A	N/A
\$1,000,000 and up	1	1.5%	1,115,000	1,115,000	18	18	100.0%	100.0%



Riley County Pending Contracts Analysis

Average Price

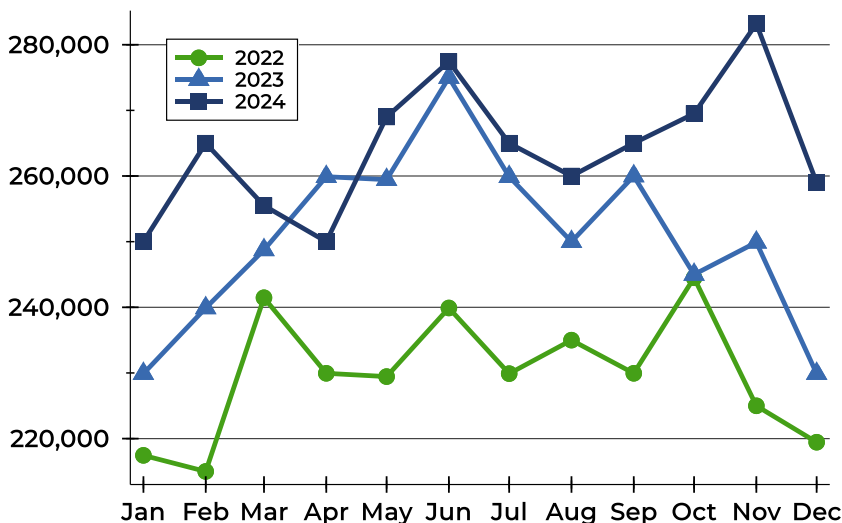
Dollars



Month	2022	2023	2024
January	243,204	276,864	264,992
February	239,149	273,576	284,565
March	277,287	272,038	283,872
April	273,152	288,375	287,141
May	262,768	282,422	299,939
June	260,348	303,159	327,846
July	253,615	288,326	299,528
August	259,667	292,135	310,197
September	253,740	301,537	313,052
October	254,702	265,571	297,779
November	243,560	289,928	313,855
December	239,327	265,080	308,070

Median Price

Dollars

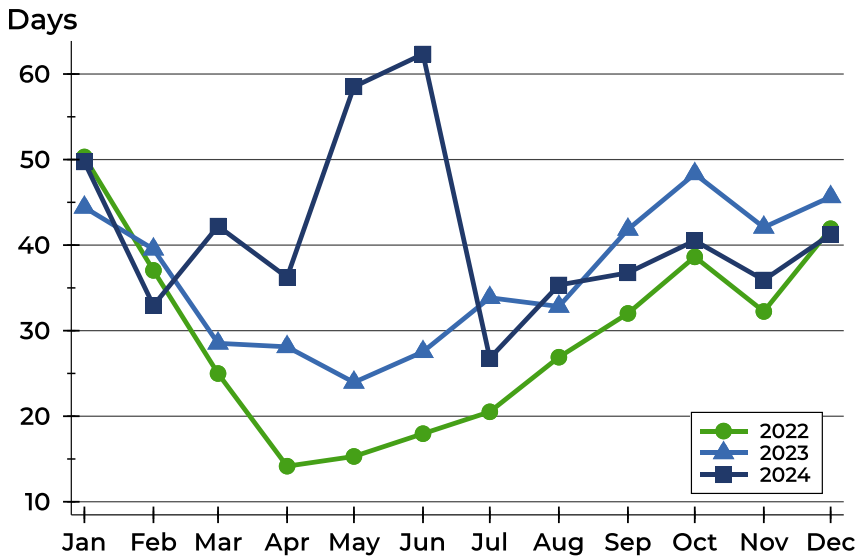


Month	2022	2023	2024
January	217,450	229,900	250,000
February	215,000	239,900	265,000
March	241,460	248,750	255,500
April	229,950	259,900	250,000
May	229,450	259,450	269,000
June	239,900	275,000	277,450
July	229,900	259,900	265,000
August	235,000	250,000	260,000
September	229,950	260,000	265,000
October	244,500	245,000	269,500
November	225,000	249,900	283,200
December	219,450	229,900	259,000



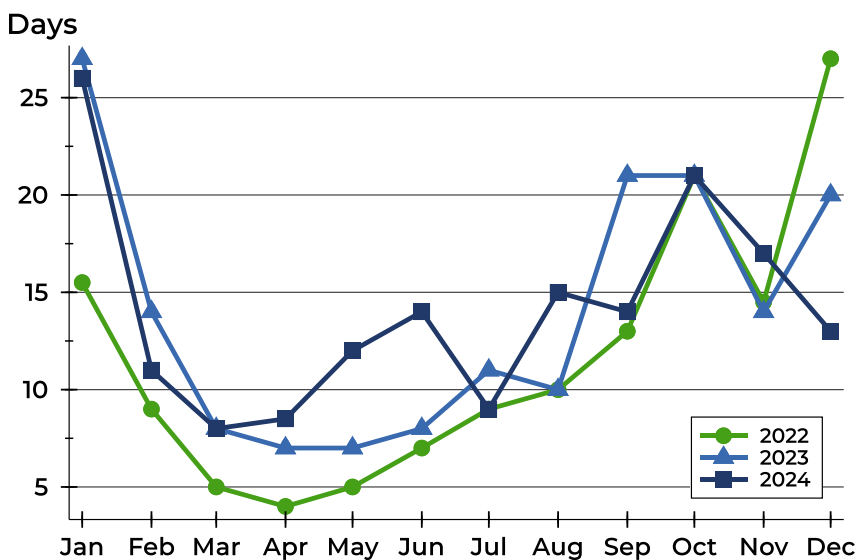
Riley County Pending Contracts Analysis

Average DOM



Month	2022	2023	2024
January	50	44	50
February	37	40	33
March	25	29	42
April	14	28	36
May	15	24	59
June	18	28	62
July	21	34	27
August	27	33	35
September	32	42	37
October	39	48	41
November	32	42	36
December	42	46	41

Median DOM



Month	2022	2023	2024
January	16	27	26
February	9	14	11
March	5	8	8
April	4	7	9
May	5	7	12
June	7	8	14
July	9	11	9
August	10	10	15
September	13	21	14
October	21	21	21
November	15	14	17
December	27	20	13