



**March  
2024**

# Flint Hills MLS Statistics



**FLINT HILLS  
ASSOCIATION  
OF REALTORS®**

## Riley County Housing Report



### Market Overview

#### Riley County Home Sales Rose in March

Total home sales in Riley County rose by 30.8% last month to 68 units, compared to 52 units in March 2023. Total sales volume was \$17.3 million, up 25.7% from a year earlier.

The median sale price in March was \$246,750, up from \$230,000 a year earlier. Homes that sold in March were typically on the market for 8 days and sold for 100.0% of their list prices.

#### Riley County Active Listings Down at End of March

The total number of active listings in Riley County at the end of March was 125 units, down from 127 at the same point in 2023. This represents a 1.8 months' supply of homes available for sale. The median list price of homes on the market at the end of March was \$279,900.

During March, a total of 88 contracts were written up from 84 in March 2023. At the end of the month, there were 136 contracts still pending.

### Report Contents

- Summary Statistics – Page 2
- Closed Listing Analysis – Page 3
- Active Listings Analysis – Page 7
- Months' Supply Analysis – Page 11
- New Listings Analysis – Page 12
- Contracts Written Analysis – Page 15
- Pending Contracts Analysis – Page 19

### Contact Information

Margaret Pendleton, Association Executive  
 Flint Hills Association of REALTORS®  
 205 S. Seth Child Road  
 Manhattan, KS 66502  
 785-776-1203  
[ae@flinthillsrealtors.net](mailto:ae@flinthillsrealtors.net)  
[www.flinthillsrealtors.net](http://www.flinthillsrealtors.net)



**March  
2024**

# Flint Hills MLS Statistics



**FLINT HILLS  
ASSOCIATION  
OF REALTORS®**

## Riley County Summary Statistics

March MLS Statistics Three-year History		Current Month			Year-to-Date			
		2024	2023	2022	2024	2023	2022	
<b>Home Sales</b>		<b>68</b>	<b>52</b>	<b>97</b>	<b>167</b>	<b>111</b>	<b>215</b>	
	Change from prior year	30.8%	-46.4%	4.3%	50.5%	-48.4%	2.9%	
<b>Active Listings</b>		<b>125</b>	<b>127</b>	<b>123</b>	<b>N/A</b>	<b>N/A</b>	<b>N/A</b>	
	Change from prior year	-1.6%	3.3%	-17.4%				
<b>Months' Supply</b>		<b>1.8</b>	<b>1.8</b>	<b>1.3</b>	<b>N/A</b>	<b>N/A</b>	<b>N/A</b>	
	Change from prior year	0.0%	38.5%	-27.8%				
<b>New Listings</b>		<b>88</b>	<b>101</b>	<b>130</b>	<b>236</b>	<b>219</b>	<b>312</b>	
	Change from prior year	-12.9%	-22.3%	-21.2%	7.8%	-29.8%	-5.5%	
<b>Contracts Written</b>		<b>88</b>	<b>84</b>	<b>94</b>	<b>221</b>	<b>185</b>	<b>271</b>	
	Change from prior year	4.8%	-10.6%	-34.3%	19.5%	-31.7%	-13.7%	
<b>Pending Contracts</b>		<b>136</b>	<b>128</b>	<b>160</b>	<b>N/A</b>	<b>N/A</b>	<b>N/A</b>	
	Change from prior year	6.3%	-20.0%	-20.4%				
<b>Sales Volume (1,000s)</b>		<b>17,268</b>	<b>13,733</b>	<b>19,419</b>	<b>43,039</b>	<b>28,096</b>	<b>46,577</b>	
	Change from prior year	25.7%	-29.3%	-5.1%	53.2%	-39.7%	1.4%	
Average	<b>Sale Price</b>	<b>253,935</b>	<b>264,104</b>	<b>200,196</b>	<b>257,716</b>	<b>253,115</b>	<b>216,635</b>	
		Change from prior year	-3.9%	31.9%	-9.0%	1.8%	16.8%	-1.4%
	<b>List Price of Actives</b>	<b>329,145</b>	<b>341,768</b>	<b>308,649</b>	<b>N/A</b>	<b>N/A</b>	<b>N/A</b>	
		Change from prior year	-3.7%	10.7%	8.1%			
	<b>Days on Market</b>	<b>33</b>	<b>47</b>	<b>37</b>	<b>43</b>	<b>44</b>	<b>39</b>	
	Change from prior year	-29.8%	27.0%	-45.6%	-2.3%	12.8%	-33.9%	
	<b>Percent of List</b>	<b>99.2%</b>	<b>97.5%</b>	<b>100.3%</b>	<b>97.8%</b>	<b>97.7%</b>	<b>99.3%</b>	
	Change from prior year	1.7%	-2.8%	1.9%	0.1%	-1.6%	1.6%	
	<b>Percent of Original</b>	<b>98.3%</b>	<b>95.2%</b>	<b>99.5%</b>	<b>96.4%</b>	<b>95.8%</b>	<b>97.7%</b>	
	Change from prior year	3.3%	-4.3%	2.8%	0.6%	-1.9%	1.6%	
Median	<b>Sale Price</b>	<b>246,750</b>	<b>230,000</b>	<b>170,000</b>	<b>248,500</b>	<b>222,500</b>	<b>192,500</b>	
		Change from prior year	7.3%	35.3%	-13.7%	11.7%	15.6%	-2.8%
	<b>List Price of Actives</b>	<b>279,900</b>	<b>289,000</b>	<b>239,900</b>	<b>N/A</b>	<b>N/A</b>	<b>N/A</b>	
		Change from prior year	-3.1%	20.5%	9.0%			
	<b>Days on Market</b>	<b>8</b>	<b>30</b>	<b>9</b>	<b>16</b>	<b>28</b>	<b>12</b>	
	Change from prior year	-73.3%	233.3%	-62.5%	-42.9%	133.3%	-57.1%	
	<b>Percent of List</b>	<b>100.0%</b>	<b>99.0%</b>	<b>100.0%</b>	<b>98.6%</b>	<b>98.8%</b>	<b>100.0%</b>	
	Change from prior year	1.0%	-1.0%	1.0%	-0.2%	-1.2%	1.3%	
	<b>Percent of Original</b>	<b>99.7%</b>	<b>97.6%</b>	<b>100.0%</b>	<b>97.8%</b>	<b>97.4%</b>	<b>100.0%</b>	
	Change from prior year	2.2%	-2.4%	2.2%	0.4%	-2.6%	2.1%	

Note: Year-to-date statistics cannot be calculated for Active Listings, Months' Supply and Pending Contracts.



# Riley County Closed Listings Analysis

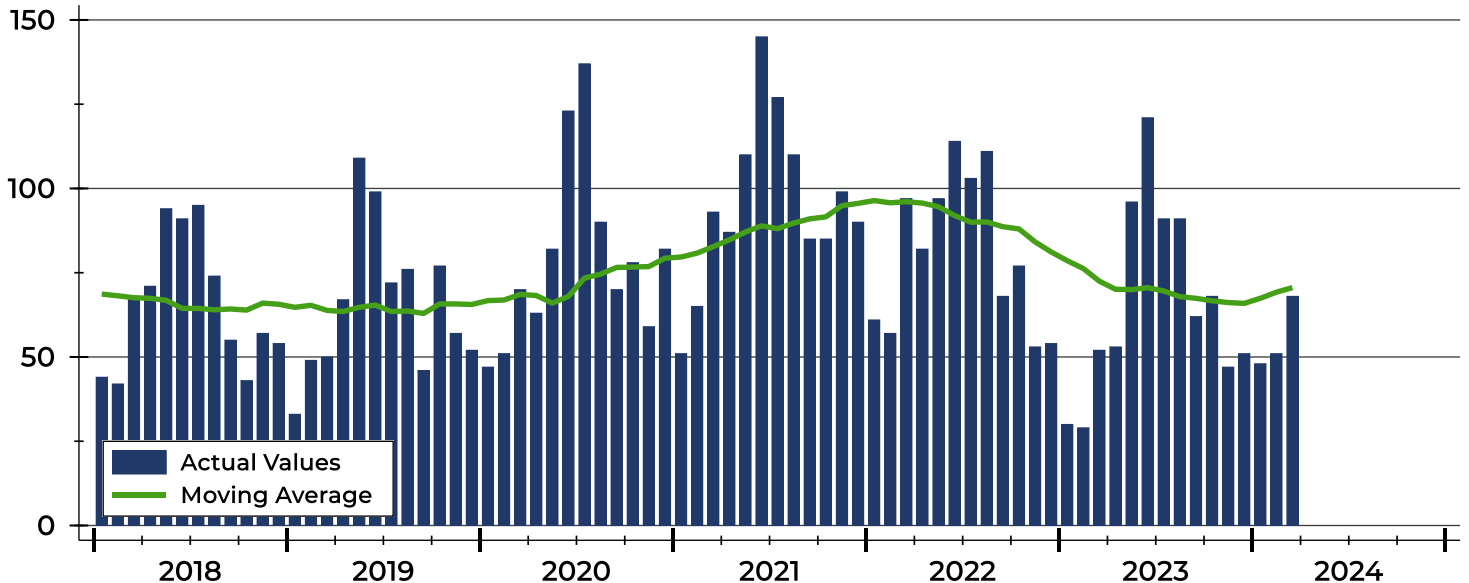
Summary Statistics for Closed Listings		2024	March 2023	Change	2024	Year-to-Date 2023	Change
Closed Listings		68	52	30.8%	167	111	50.5%
Volume (1,000s)		17,268	13,733	25.7%	43,039	28,096	53.2%
Months' Supply		1.8	1.8	0.0%	N/A	N/A	N/A
Average	Sale Price	253,935	264,104	-3.9%	257,716	253,115	1.8%
	Days on Market	33	47	-29.8%	43	44	-2.3%
	Percent of List	99.2%	97.5%	1.7%	97.8%	97.7%	0.1%
	Percent of Original	98.3%	95.2%	3.3%	96.4%	95.8%	0.6%
Median	Sale Price	246,750	230,000	7.3%	248,500	222,500	11.7%
	Days on Market	8	30	-73.3%	16	28	-42.9%
	Percent of List	100.0%	99.0%	1.0%	98.6%	98.8%	-0.2%
	Percent of Original	99.7%	97.6%	2.2%	97.8%	97.4%	0.4%

A total of 68 homes sold in Riley County in March, up from 52 units in March 2023. Total sales volume rose to \$17.3 million compared to \$13.7 million in the previous year.

The median sales price in March was \$246,750, up 7.3% compared to the prior year. Median days on market was 8 days, down from 33 days in February, and down from 30 in March 2023.

## History of Closed Listings

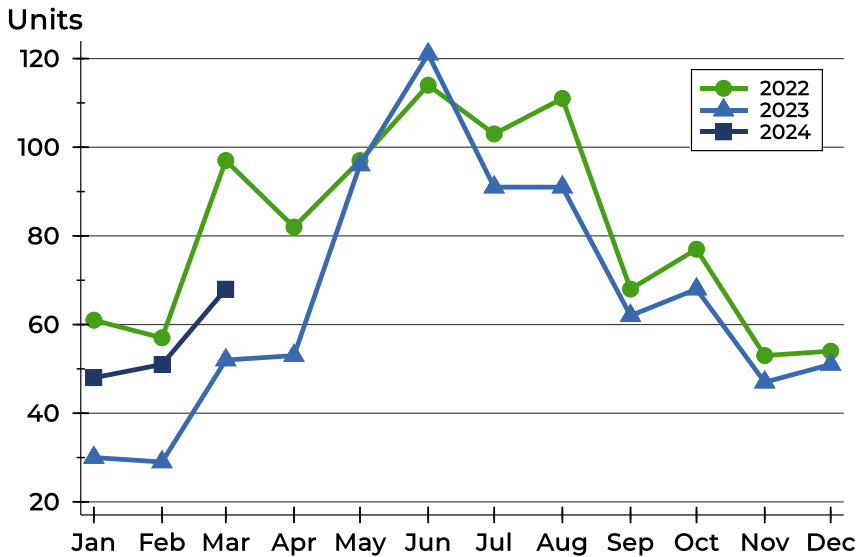
Units





## Riley County Closed Listings Analysis

### Closed Listings by Month



Month	2022	2023	2024
January	61	30	<b>48</b>
February	57	29	<b>51</b>
March	97	52	<b>68</b>
April	82	53	
May	97	96	
June	114	121	
July	103	91	
August	111	91	
September	68	62	
October	77	68	
November	53	47	
December	54	51	

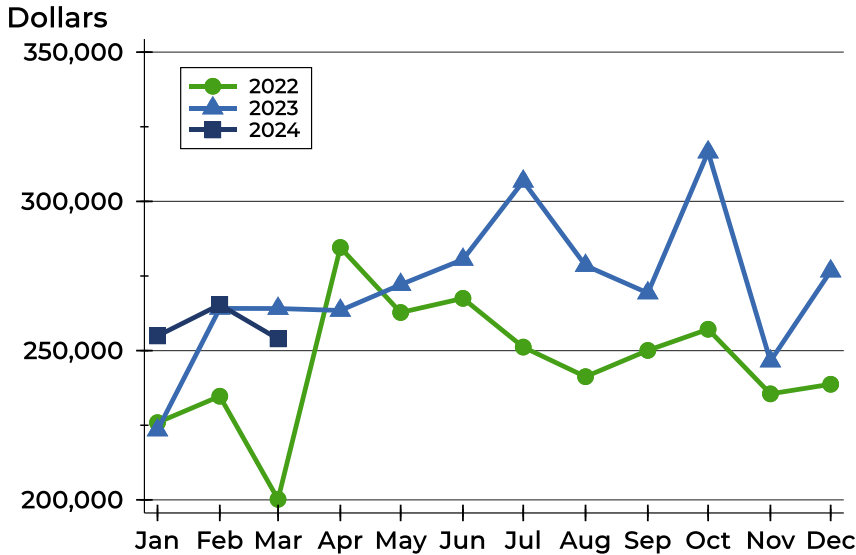
### Closed Listings by Price Range

Price Range	Sales		Months' Supply	Sale Price		Days on Market		Price as % of List		Price as % of Orig.	
	Number	Percent		Average	Median	Avg.	Med.	Avg.	Med.	Avg.	Med.
Below \$25,000	0	0.0%	N/A	N/A	N/A	N/A	N/A	N/A	N/A	N/A	N/A
\$25,000-\$49,999	0	0.0%	N/A	N/A	N/A	N/A	N/A	N/A	N/A	N/A	N/A
\$50,000-\$99,999	4	5.9%	6.5	64,250	63,500	72	68	97.2%	97.8%	95.4%	95.1%
\$100,000-\$124,999	1	1.5%	3.1	100,000	100,000	6	6	101.0%	101.0%	101.0%	101.0%
\$125,000-\$149,999	3	4.4%	1.7	137,400	135,000	39	38	96.2%	100.0%	92.3%	95.0%
\$150,000-\$174,999	7	10.3%	1.5	162,343	166,000	33	6	97.1%	98.6%	97.0%	98.6%
\$175,000-\$199,999	9	13.2%	1.5	185,283	185,000	22	13	98.6%	99.5%	97.6%	99.5%
\$200,000-\$249,999	11	16.2%	0.9	225,409	225,000	52	22	100.5%	100.0%	99.0%	100.0%
\$250,000-\$299,999	15	22.1%	1.7	278,290	280,140	17	3	100.3%	101.8%	99.9%	101.8%
\$300,000-\$399,999	12	17.6%	1.8	337,012	331,123	24	14	99.2%	99.2%	98.2%	98.5%
\$400,000-\$499,999	4	5.9%	1.5	461,700	459,200	3	3	100.9%	99.9%	100.9%	99.9%
\$500,000-\$749,999	2	2.9%	3.4	574,822	574,822	140	140	99.0%	99.0%	99.1%	99.1%
\$750,000-\$999,999	0	0.0%	N/A	N/A	N/A	N/A	N/A	N/A	N/A	N/A	N/A
\$1,000,000 and up	0	0.0%	N/A	N/A	N/A	N/A	N/A	N/A	N/A	N/A	N/A



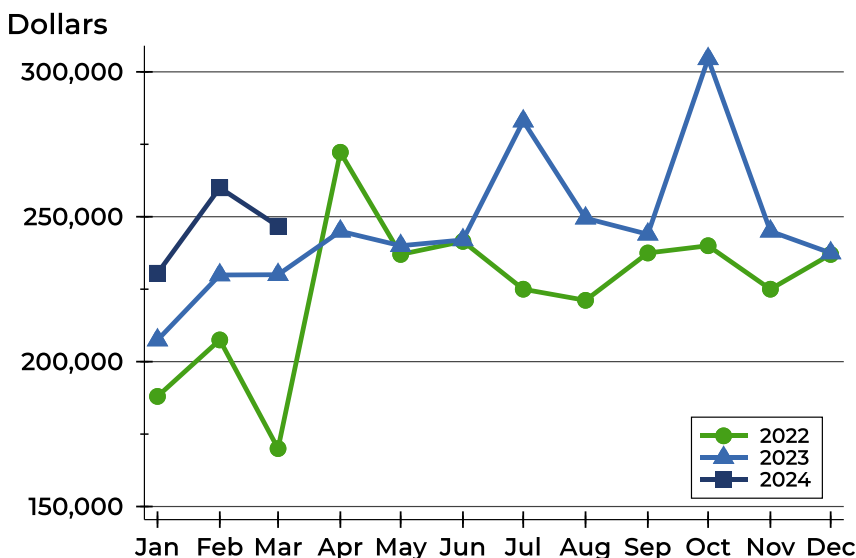
# Riley County Closed Listings Analysis

## Average Price



Month	2022	2023	2024
January	225,875	223,398	<b>254,923</b>
February	234,723	264,153	<b>265,385</b>
March	200,196	264,104	<b>253,935</b>
April	284,561	263,458	
May	262,771	272,119	
June	267,511	280,542	
July	251,180	306,725	
August	241,275	278,493	
September	250,074	269,304	
October	257,164	316,505	
November	235,522	246,497	
December	238,726	276,629	

## Median Price

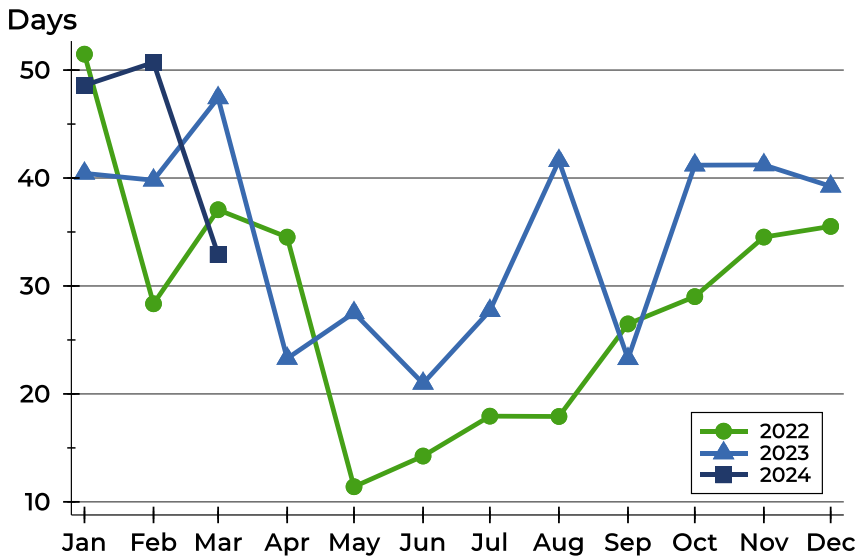


Month	2022	2023	2024
January	188,000	207,450	<b>230,500</b>
February	207,500	229,900	<b>260,000</b>
March	170,000	230,000	<b>246,750</b>
April	272,250	245,000	
May	237,000	240,000	
June	241,500	242,000	
July	225,000	283,000	
August	221,159	249,500	
September	237,500	243,950	
October	240,000	304,500	
November	225,000	245,000	
December	237,000	237,500	



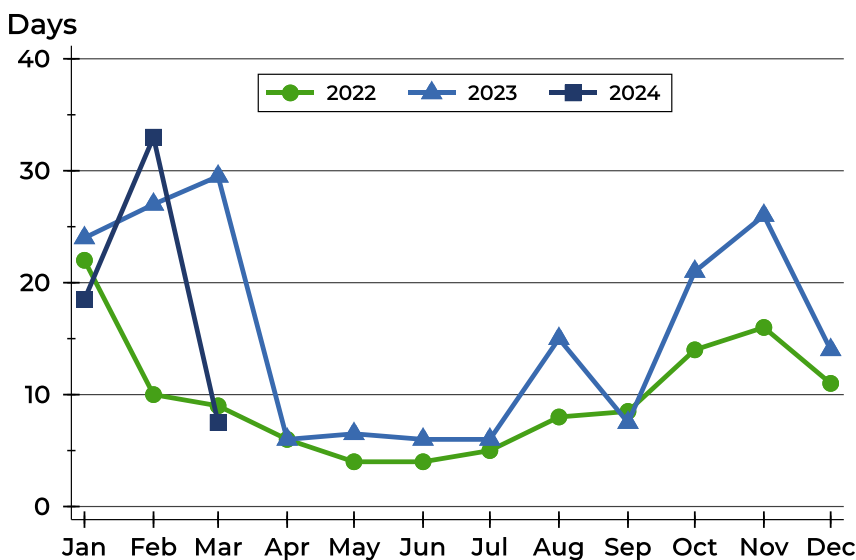
# Riley County Closed Listings Analysis

## Average DOM



Month	2022	2023	2024
January	51	40	<b>49</b>
February	28	40	<b>51</b>
March	37	47	<b>33</b>
April	35	23	
May	11	28	
June	14	21	
July	18	28	
August	18	42	
September	26	23	
October	29	41	
November	35	41	
December	36	39	

## Median DOM



Month	2022	2023	2024
January	22	24	<b>19</b>
February	10	27	<b>33</b>
March	9	30	<b>8</b>
April	6	6	
May	4	7	
June	4	6	
July	5	6	
August	8	15	
September	9	8	
October	14	21	
November	16	26	
December	11	14	



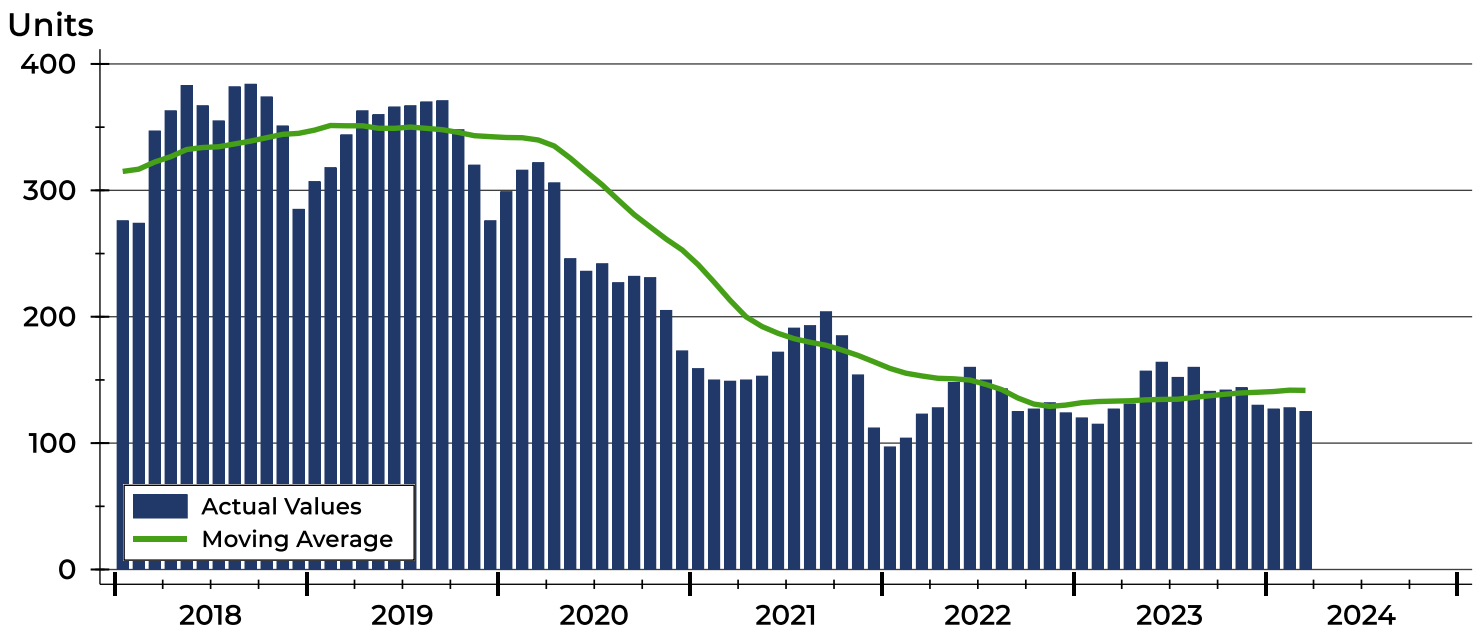
# Riley County Active Listings Analysis

Summary Statistics for Active Listings		2024	End of March 2023	Change
Active Listings		125	127	-1.6%
Volume (1,000s)		41,143	43,404	-5.2%
Months' Supply		1.8	1.8	0.0%
Average	List Price	329,145	341,768	-3.7%
	Days on Market	72	75	-4.0%
	Percent of Original	97.6%	98.3%	-0.7%
Median	List Price	279,900	289,000	-3.1%
	Days on Market	48	47	2.1%
	Percent of Original	100.0%	100.0%	0.0%

A total of 125 homes were available for sale in Riley County at the end of March. This represents a 1.8 months' supply of active listings.

The median list price of homes on the market at the end of March was \$279,900, down 3.1% from 2023. The typical time on market for active listings was 48 days, up from 47 days a year earlier.

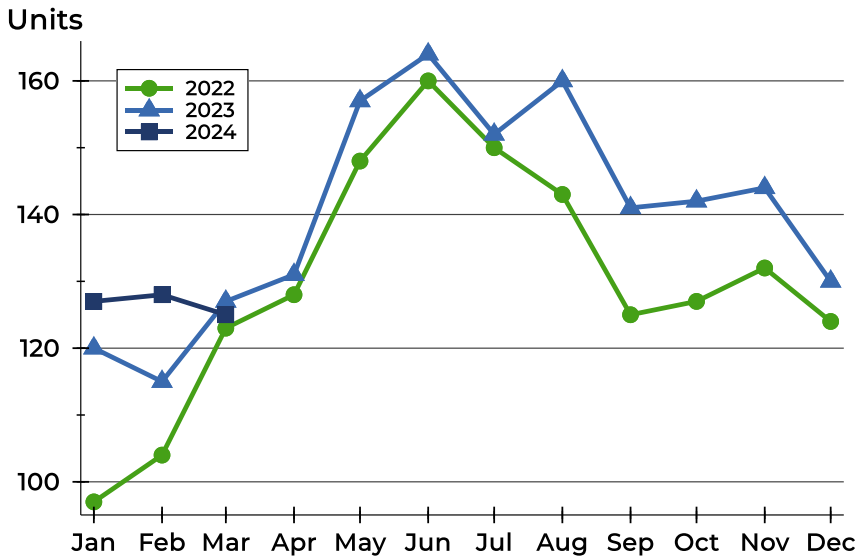
## History of Active Listings





## Riley County Active Listings Analysis

### Active Listings by Month



Month	2022	2023	2024
January	97	120	<b>127</b>
February	104	115	<b>128</b>
March	123	127	<b>125</b>
April	128	131	
May	148	157	
June	160	164	
July	150	152	
August	143	160	
September	125	141	
October	127	142	
November	132	144	
December	124	130	

### Active Listings by Price Range

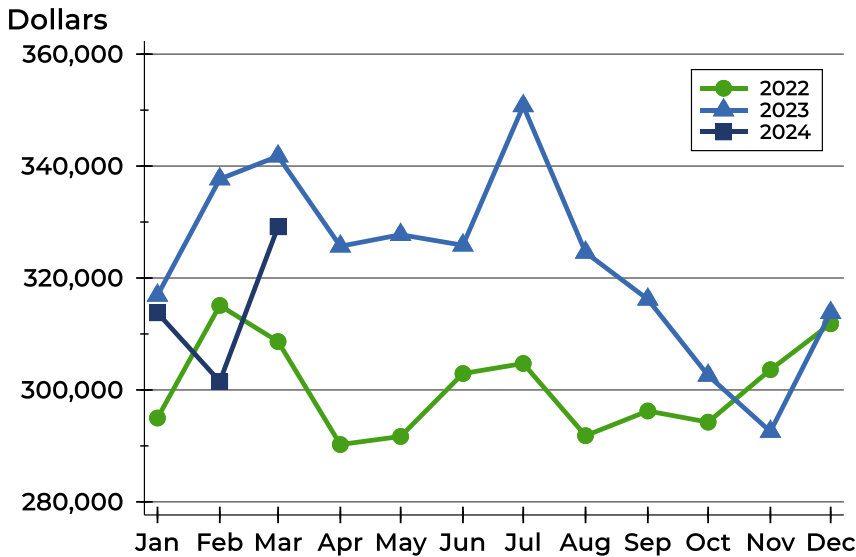
Price Range	Active Listings Number	Active Listings Percent	Months' Supply	List Price Average	List Price Median	Days on Market Avg.	Days on Market Med.	Price as % of Orig. Avg.	Price as % of Orig. Med.
Below \$25,000	0	0.0%	N/A	N/A	N/A	N/A	N/A	N/A	N/A
\$25,000-\$49,999	0	0.0%	N/A	N/A	N/A	N/A	N/A	N/A	N/A
\$50,000-\$99,999	7	5.6%	6.5	81,229	89,900	137	102	91.0%	100.0%
\$100,000-\$124,999	8	6.4%	3.1	112,850	112,000	57	53	94.7%	100.0%
\$125,000-\$149,999	6	4.8%	1.7	131,500	129,500	54	59	97.9%	100.0%
\$150,000-\$174,999	9	7.2%	1.5	164,822	165,000	50	34	98.8%	100.0%
\$175,000-\$199,999	11	8.8%	1.5	186,173	185,000	78	96	99.3%	100.0%
\$200,000-\$249,999	13	10.4%	0.9	233,300	235,000	61	40	98.5%	100.0%
\$250,000-\$299,999	18	14.4%	1.7	276,656	279,900	70	61	97.2%	100.0%
\$300,000-\$399,999	27	21.6%	1.8	351,719	359,900	68	42	98.2%	100.0%
\$400,000-\$499,999	8	6.4%	1.5	452,500	445,000	46	36	100.0%	100.0%
\$500,000-\$749,999	11	8.8%	3.4	617,482	629,900	66	18	99.1%	100.0%
\$750,000-\$999,999	4	3.2%	N/A	920,250	941,500	97	96	95.0%	100.0%
\$1,000,000 and up	3	2.4%	N/A	1,249,667	1,200,000	202	293	93.3%	100.0%





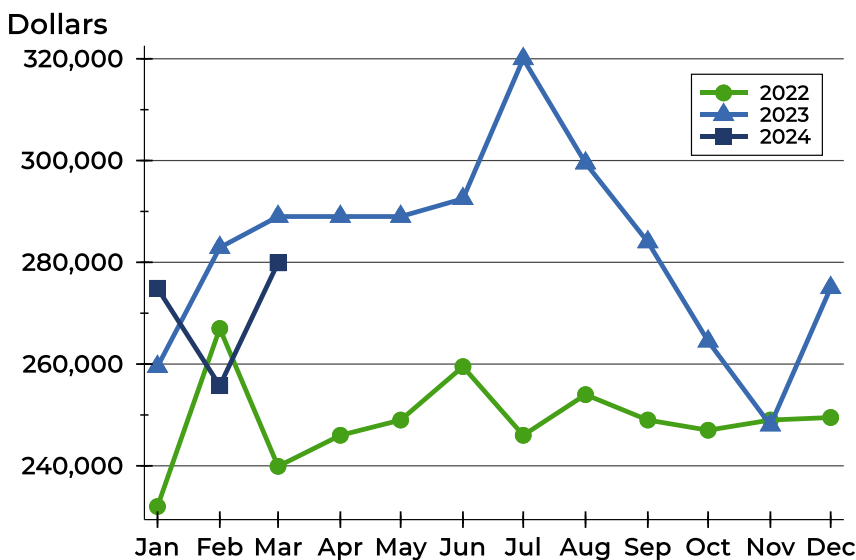
# Riley County Active Listings Analysis

## Average Price



Month	2022	2023	2024
January	294,980	316,889	<b>313,781</b>
February	315,098	337,680	<b>301,514</b>
March	308,649	341,768	<b>329,145</b>
April	290,244	325,675	
May	291,693	327,740	
June	302,934	325,855	
July	304,729	350,757	
August	291,827	324,571	
September	296,245	316,188	
October	294,245	302,591	
November	303,615	292,564	
December	311,834	313,791	

## Median Price

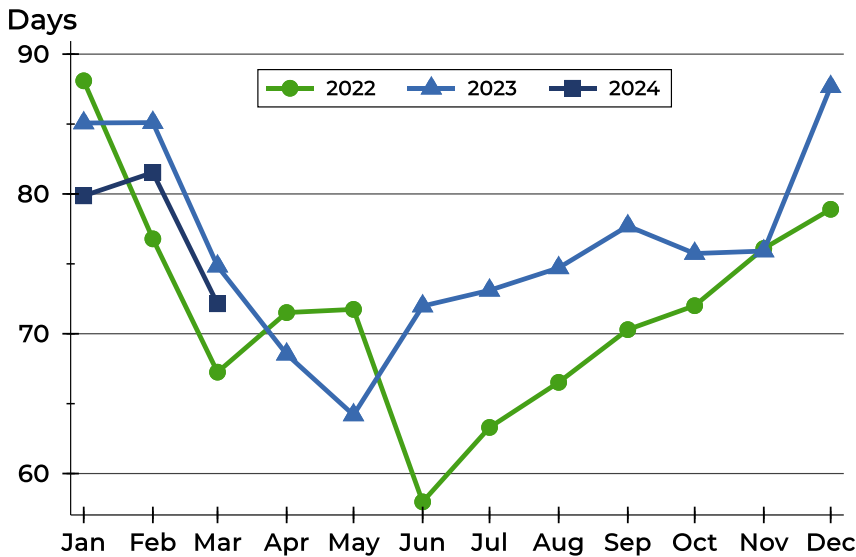


Month	2022	2023	2024
January	232,000	259,500	<b>274,900</b>
February	267,000	282,900	<b>255,750</b>
March	239,900	289,000	<b>279,900</b>
April	246,000	289,000	
May	249,000	289,000	
June	259,500	292,500	
July	246,000	320,000	
August	254,000	299,500	
September	249,000	284,000	
October	247,000	264,500	
November	249,000	248,000	
December	249,500	275,000	



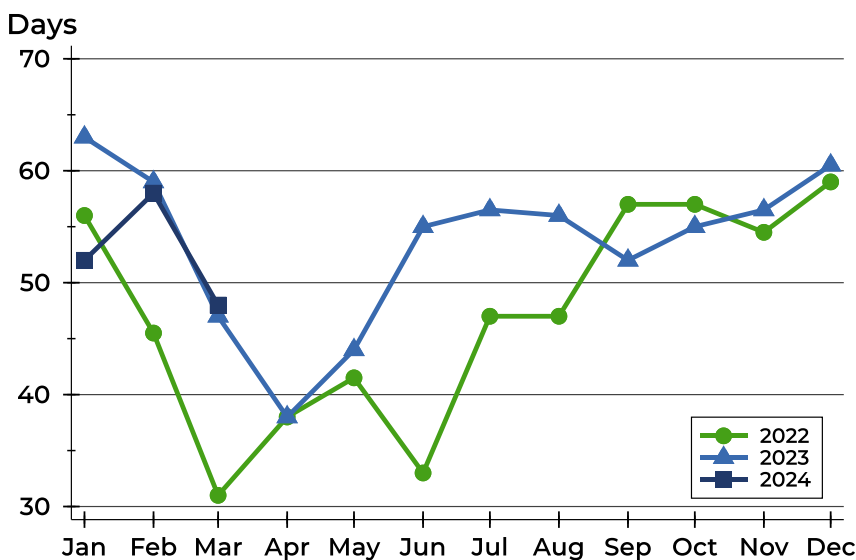
# Riley County Active Listings Analysis

## Average DOM



Month	2022	2023	2024
January	88	85	<b>80</b>
February	77	85	<b>82</b>
March	67	75	<b>72</b>
April	72	69	
May	72	64	
June	58	72	
July	63	73	
August	67	75	
September	70	78	
October	72	76	
November	76	76	
December	79	88	

## Median DOM

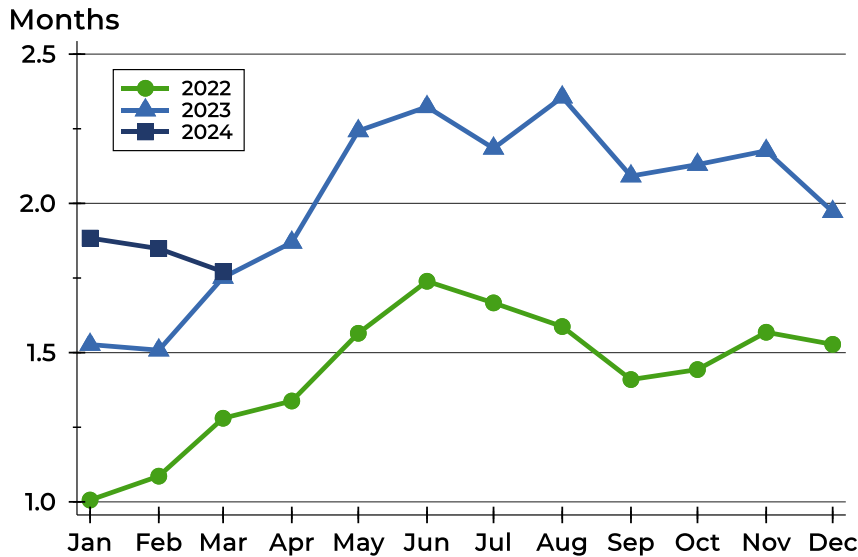


Month	2022	2023	2024
January	56	63	<b>52</b>
February	46	59	<b>58</b>
March	31	47	<b>48</b>
April	38	38	
May	42	44	
June	33	55	
July	47	57	
August	47	56	
September	57	52	
October	57	55	
November	55	57	
December	59	61	



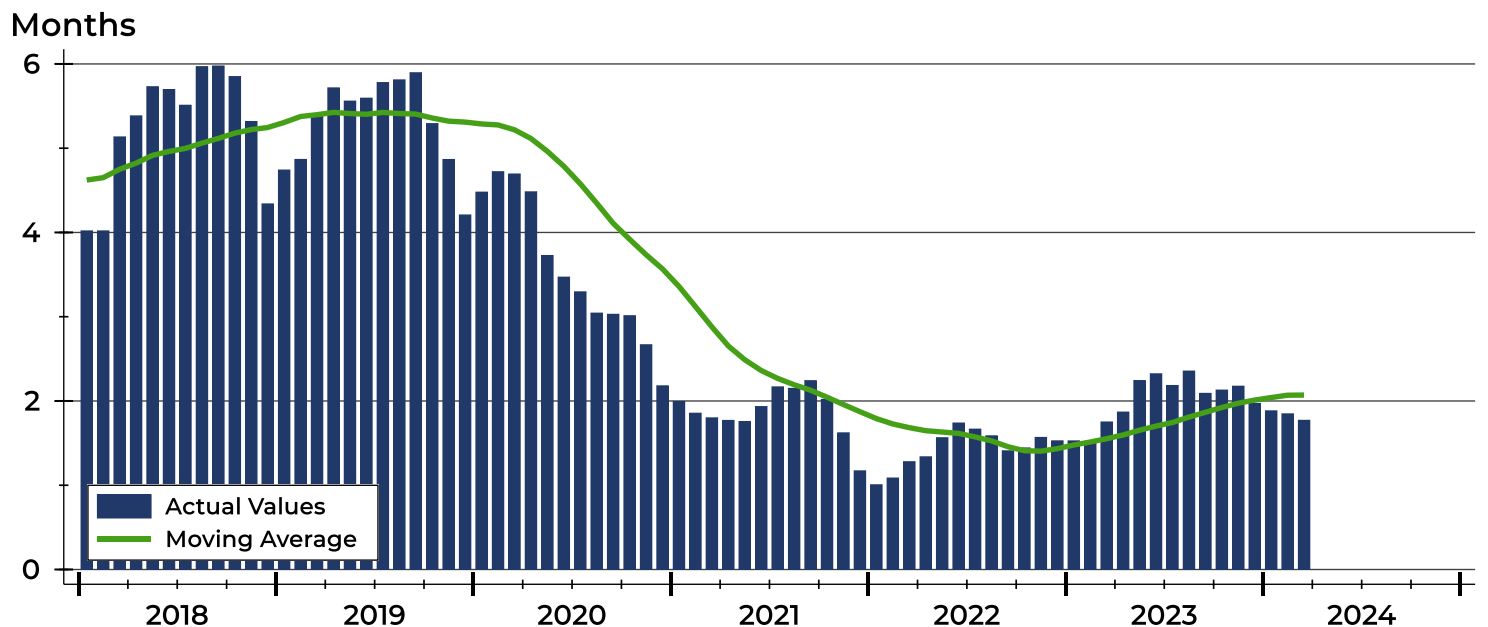
# Riley County Months' Supply Analysis

## Months' Supply by Month



Month	2022	2023	2024
January	1.0	1.5	1.9
February	1.1	1.5	1.8
March	1.3	1.8	1.8
April	1.3	1.9	
May	1.6	2.2	
June	1.7	2.3	
July	1.7	2.2	
August	1.6	2.4	
September	1.4	2.1	
October	1.4	2.1	
November	1.6	2.2	
December	1.5	2.0	

## History of Month's Supply





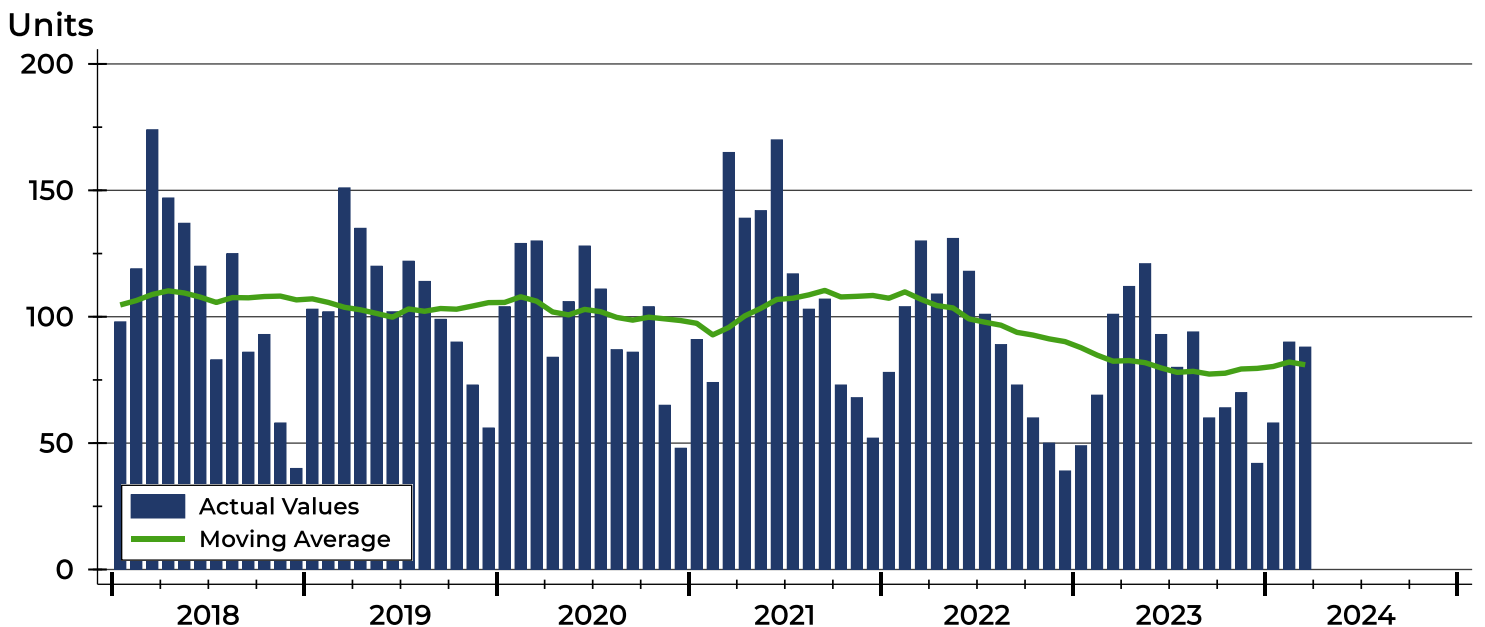
# Riley County New Listings Analysis

Summary Statistics for New Listings		2024	March 2023	Change
Current Month	New Listings	88	101	-12.9%
	Volume (1,000s)	28,131	28,941	-2.8%
	Average List Price	319,672	286,544	11.6%
	Median List Price	274,950	267,500	2.8%
Year-to-Date	New Listings	236	219	7.8%
	Volume (1,000s)	69,141	63,247	9.3%
	Average List Price	292,972	288,797	1.4%
	Median List Price	262,500	267,500	-1.9%

A total of 88 new listings were added in Riley County during March, down 12.9% from the same month in 2023. Year-to-date Riley County has seen 236 new listings.

The median list price of these homes was \$274,950 up from \$267,500 in 2023.

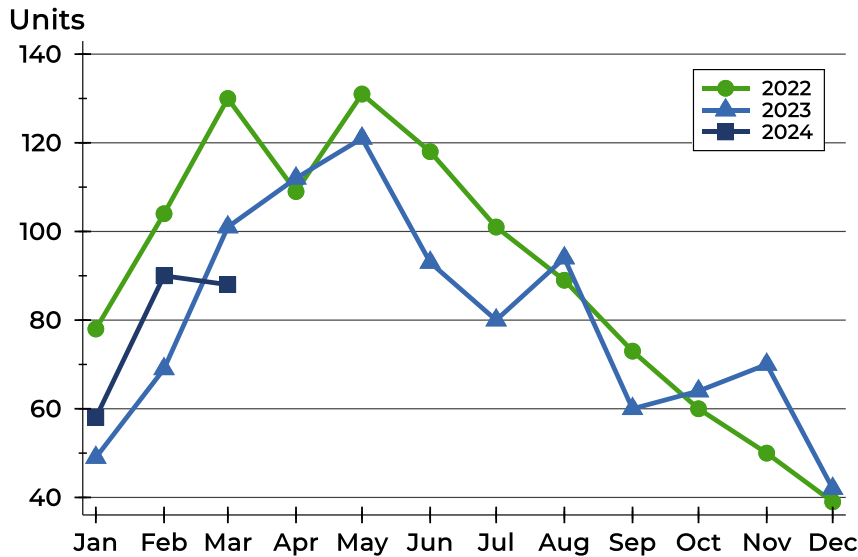
## History of New Listings





## Riley County New Listings Analysis

### New Listings by Month



Month	2022	2023	2024
January	78	49	<b>58</b>
February	104	69	<b>90</b>
March	130	101	<b>88</b>
April	109	112	
May	131	121	
June	118	93	
July	101	80	
August	89	94	
September	73	60	
October	60	64	
November	50	70	
December	39	42	

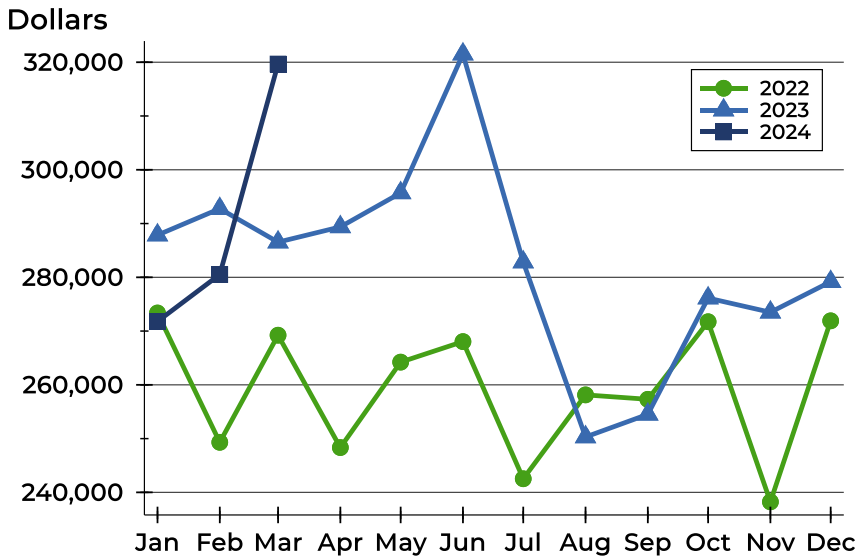
### New Listings by Price Range

Price Range	New Listings		List Price		Days on Market		Price as % of Orig.	
	Number	Percent	Average	Median	Avg.	Med.	Avg.	Med.
Below \$25,000	0	0.0%	N/A	N/A	N/A	N/A	N/A	N/A
\$25,000-\$49,999	0	0.0%	N/A	N/A	N/A	N/A	N/A	N/A
\$50,000-\$99,999	1	1.1%	65,000	65,000	1	1	96.9%	96.9%
\$100,000-\$124,999	2	2.3%	118,500	118,500	2	2	100.0%	100.0%
\$125,000-\$149,999	4	4.5%	128,625	127,500	10	9	98.9%	100.0%
\$150,000-\$174,999	9	10.2%	162,567	160,000	14	11	99.8%	100.0%
\$175,000-\$199,999	6	6.8%	182,067	180,250	12	4	99.1%	100.0%
\$200,000-\$249,999	15	17.0%	228,117	234,500	7	4	100.0%	100.0%
\$250,000-\$299,999	10	11.4%	267,880	262,450	10	10	99.5%	100.0%
\$300,000-\$399,999	21	23.9%	342,186	345,000	9	7	100.2%	100.0%
\$400,000-\$499,999	11	12.5%	441,445	429,000	77	8	100.0%	100.0%
\$500,000-\$749,999	6	6.8%	628,633	626,950	14	12	100.0%	100.0%
\$750,000-\$999,999	2	2.3%	897,500	897,500	27	27	100.0%	100.0%
\$1,000,000 and up	1	1.1%	1,050,000	1,050,000	26	26	100.0%	100.0%



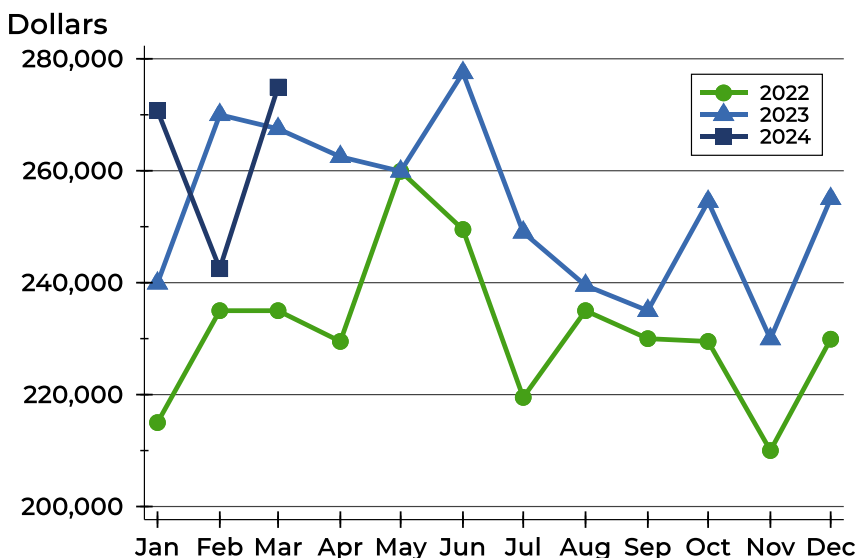
# Riley County New Listings Analysis

## Average Price



Month	2022	2023	2024
January	273,365	287,852	<b>271,788</b>
February	249,317	292,767	<b>280,518</b>
March	269,234	286,544	<b>319,672</b>
April	248,339	289,376	
May	264,226	295,696	
June	268,046	321,506	
July	242,536	282,840	
August	258,135	250,303	
September	257,311	254,518	
October	271,739	276,135	
November	238,235	273,505	
December	271,909	279,185	

## Median Price



Month	2022	2023	2024
January	215,000	239,900	<b>270,750</b>
February	235,000	270,000	<b>242,500</b>
March	235,000	267,500	<b>274,950</b>
April	229,500	262,500	
May	259,900	259,900	
June	249,500	277,500	
July	219,500	249,000	
August	235,000	239,500	
September	230,000	235,000	
October	229,500	254,500	
November	210,000	229,950	
December	229,900	255,000	



**March  
2024**

# Flint Hills MLS Statistics



**FLINT HILLS  
ASSOCIATION  
OF REALTORS®**

## Riley County Contracts Written Analysis

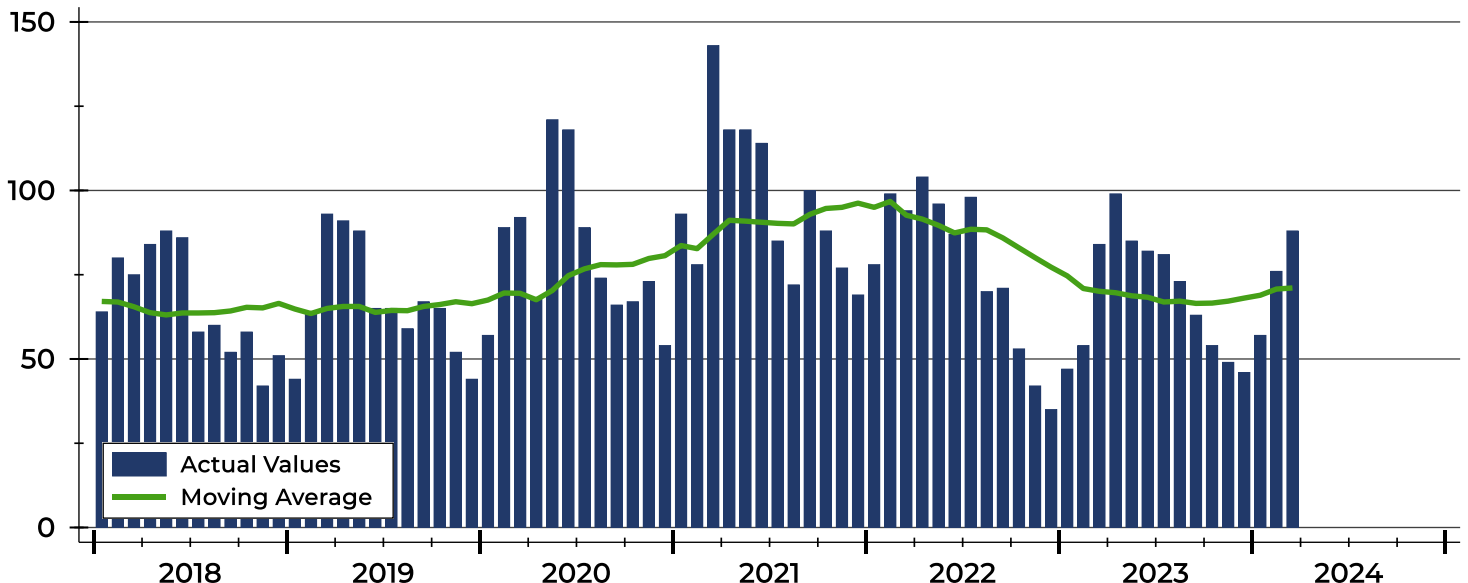
Summary Statistics for Contracts Written		2024	March 2023	Change	2024	Year-to-Date 2023	Change
Contracts Written		<b>88</b>	84	4.8%	<b>221</b>	185	19.5%
Volume (1,000s)		<b>24,113</b>	22,932	5.2%	<b>61,140</b>	50,005	22.3%
Average	Sale Price	<b>274,015</b>	273,006	0.4%	<b>276,650</b>	270,298	2.3%
	Days on Market	<b>44</b>	30	46.7%	<b>40</b>	32	25.0%
	Percent of Original	<b>98.8%</b>	98.7%	0.1%	<b>98.2%</b>	97.9%	0.3%
Median	Sale Price	<b>242,500</b>	249,900	-3.0%	<b>260,000</b>	239,900	8.4%
	Days on Market	<b>10</b>	8	25.0%	<b>11</b>	9	22.2%
	Percent of Original	<b>100.0%</b>	100.0%	0.0%	<b>100.0%</b>	100.0%	0.0%

A total of 88 contracts for sale were written in Riley County during the month of March, up from 84 in 2023. The median list price of these homes was \$242,500, down from \$249,900 the prior year.

Half of the homes that went under contract in March were on the market less than 10 days, compared to 8 days in March 2023.

## History of Contracts Written

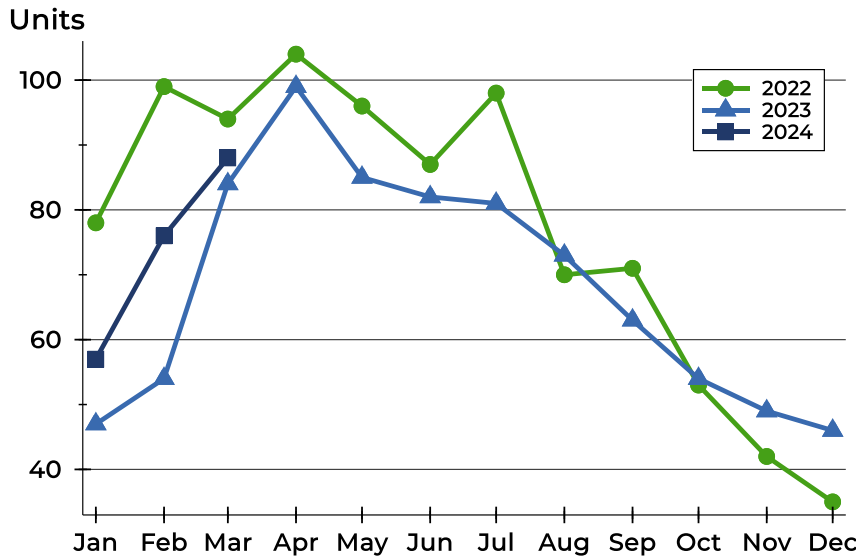
Units





# Riley County Contracts Written Analysis

## Contracts Written by Month



Month	2022	2023	2024
January	78	47	57
February	99	54	76
March	94	84	88
April	104	99	
May	96	85	
June	87	82	
July	98	81	
August	70	73	
September	71	63	
October	53	54	
November	42	49	
December	35	46	

## Contracts Written by Price Range

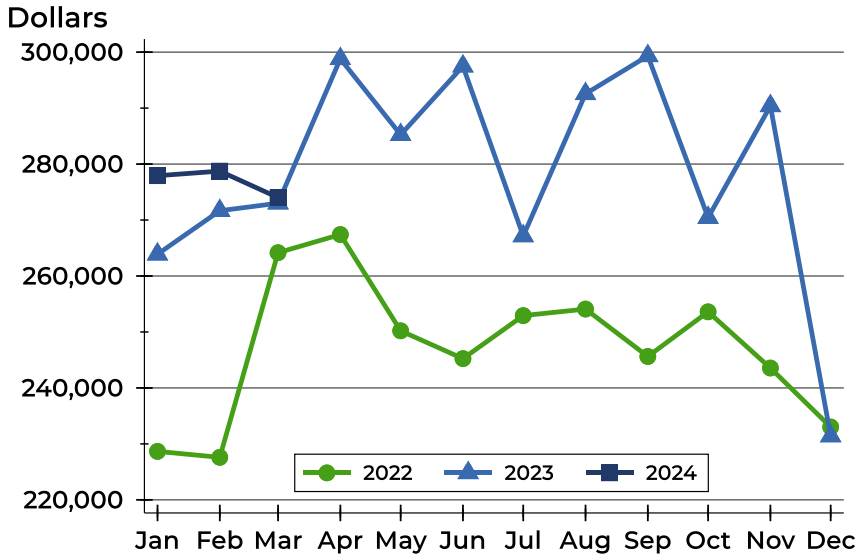
Price Range	Contracts Written		List Price		Days on Market		Price as % of Orig.	
	Number	Percent	Average	Median	Avg.	Med.	Avg.	Med.
Below \$25,000	0	0.0%	N/A	N/A	N/A	N/A	N/A	N/A
\$25,000-\$49,999	0	0.0%	N/A	N/A	N/A	N/A	N/A	N/A
\$50,000-\$99,999	2	2.3%	72,500	72,500	4	4	98.5%	98.5%
\$100,000-\$124,999	5	5.7%	115,400	115,000	139	23	100.0%	100.0%
\$125,000-\$149,999	3	3.4%	136,167	134,500	30	8	99.2%	100.0%
\$150,000-\$174,999	10	11.4%	164,220	169,450	33	13	98.4%	100.0%
\$175,000-\$199,999	10	11.4%	185,020	181,250	22	12	96.2%	100.0%
\$200,000-\$249,999	17	19.3%	225,144	220,000	14	10	100.2%	100.0%
\$250,000-\$299,999	12	13.6%	267,817	265,000	34	10	99.6%	100.0%
\$300,000-\$399,999	16	18.2%	346,513	352,500	20	4	99.1%	100.0%
\$400,000-\$499,999	8	9.1%	440,625	434,500	69	7	98.1%	100.0%
\$500,000-\$749,999	4	4.5%	622,625	631,500	63	60	98.7%	100.0%
\$750,000-\$999,999	1	1.1%	889,500	889,500	789	789	89.8%	89.8%
\$1,000,000 and up	0	0.0%	N/A	N/A	N/A	N/A	N/A	N/A





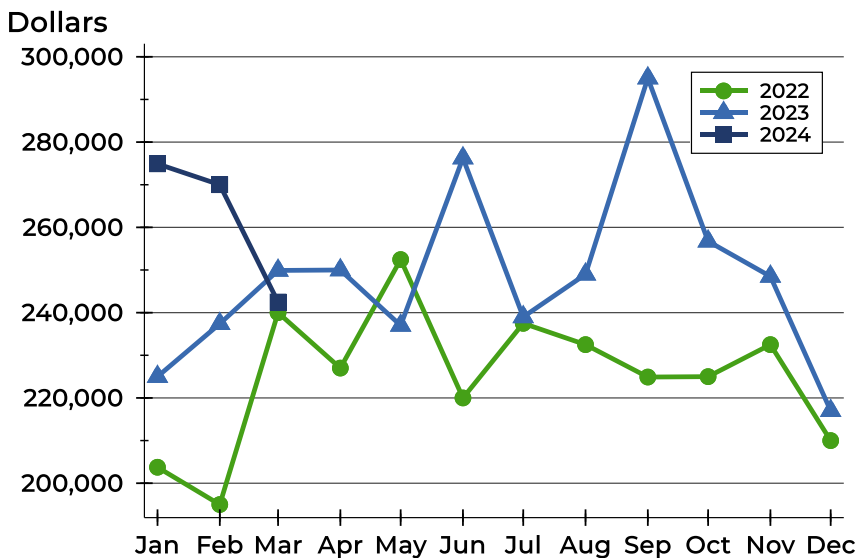
# Riley County Contracts Written Analysis

## Average Price



Month	2022	2023	2024
January	228,668	263,891	<b>277,922</b>
February	227,600	271,664	<b>278,747</b>
March	264,169	273,006	<b>274,015</b>
April	267,411	298,818	
May	250,209	285,244	
June	245,241	297,489	
July	252,925	267,157	
August	254,097	292,554	
September	245,622	299,340	
October	253,600	270,441	
November	243,560	290,402	
December	233,020	231,409	

## Median Price

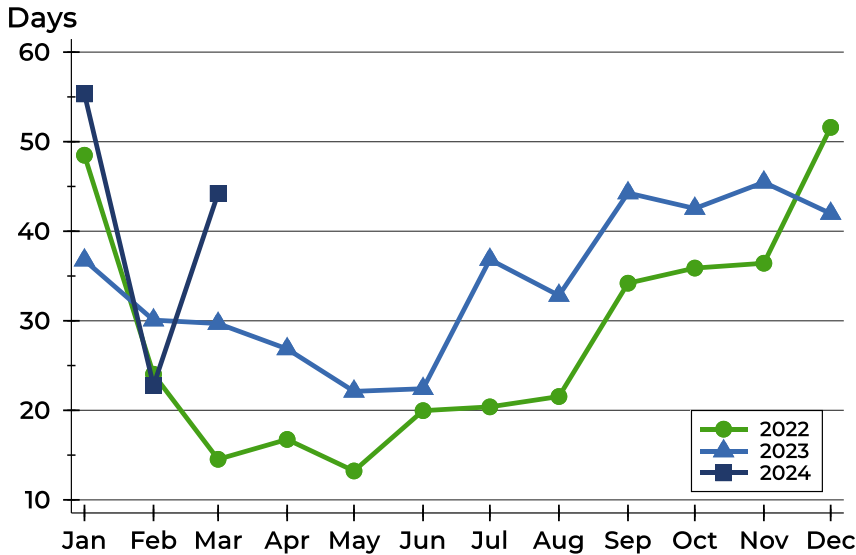


Month	2022	2023	2024
January	203,750	225,000	<b>274,900</b>
February	195,000	237,400	<b>270,000</b>
March	240,000	249,900	<b>242,500</b>
April	227,000	250,000	
May	252,450	237,000	
June	220,000	276,250	
July	237,500	239,000	
August	232,500	249,000	
September	224,900	295,000	
October	225,000	256,750	
November	232,500	248,500	
December	210,000	217,000	



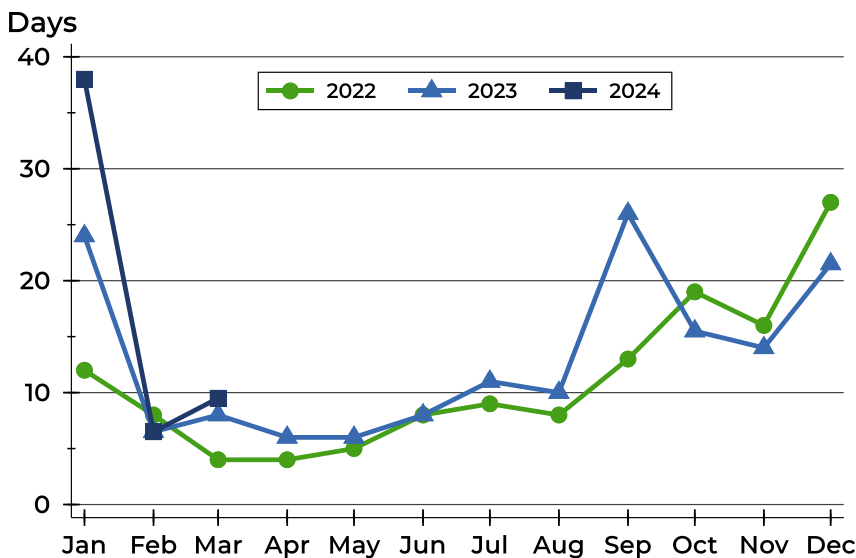
## Riley County Contracts Written Analysis

### Average DOM



Month	2022	2023	2024
January	48	37	<b>55</b>
February	24	30	<b>23</b>
March	15	30	<b>44</b>
April	17	27	
May	13	22	
June	20	22	
July	20	37	
August	22	33	
September	34	44	
October	36	43	
November	36	45	
December	52	42	

### Median DOM



Month	2022	2023	2024
January	12	24	<b>38</b>
February	8	7	<b>7</b>
March	4	8	<b>10</b>
April	4	6	
May	5	6	
June	8	8	
July	9	11	
August	8	10	
September	13	26	
October	19	16	
November	16	14	
December	27	22	



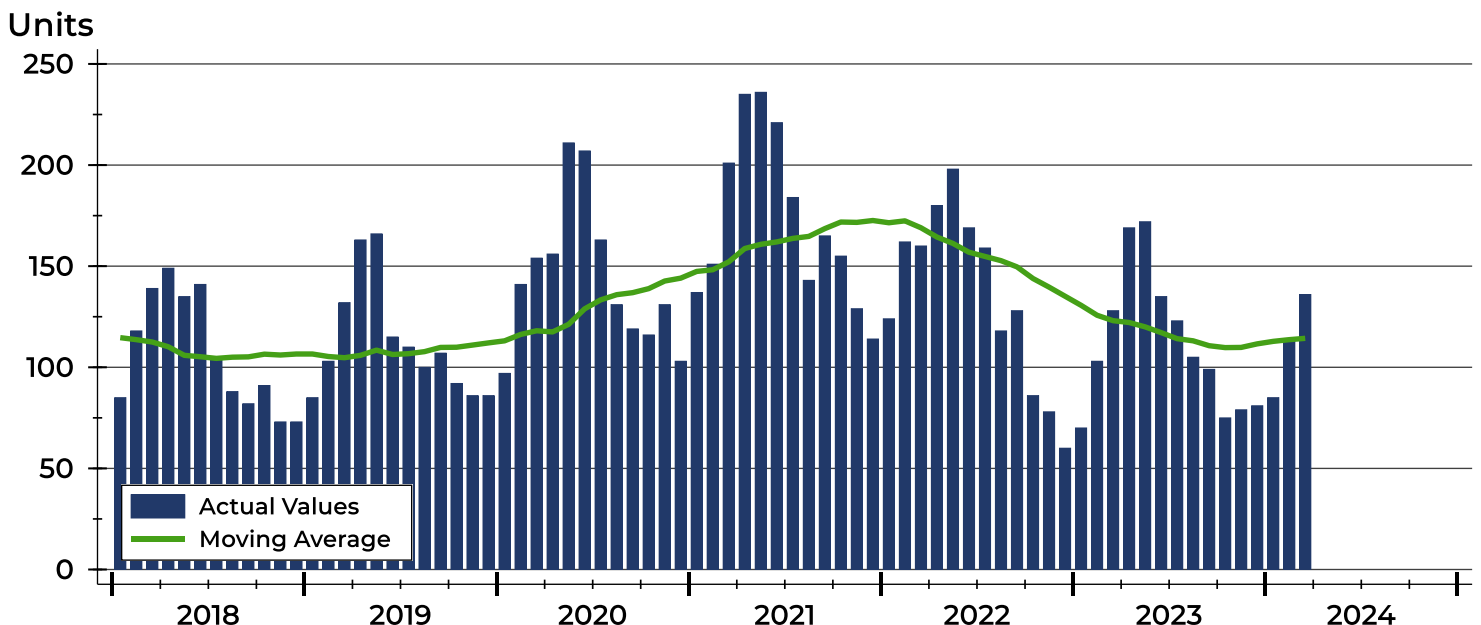
# Riley County Pending Contracts Analysis

Summary Statistics for Pending Contracts		2024	End of March 2023	Change
Pending Contracts		136	128	6.3%
Volume (1,000s)		38,607	34,821	10.9%
Average	List Price	283,872	272,038	4.4%
	Days on Market	42	29	44.8%
	Percent of Original	99.0%	98.6%	0.4%
Median	List Price	255,500	248,750	2.7%
	Days on Market	8	8	0.0%
	Percent of Original	100.0%	100.0%	0.0%

A total of 136 listings in Riley County had contracts pending at the end of March, up from 128 contracts pending at the end of March 2023.

Pending contracts reflect listings with a contract in place at the end of the month. In contrast, contracts written measures the number of listings put under contract during the month.

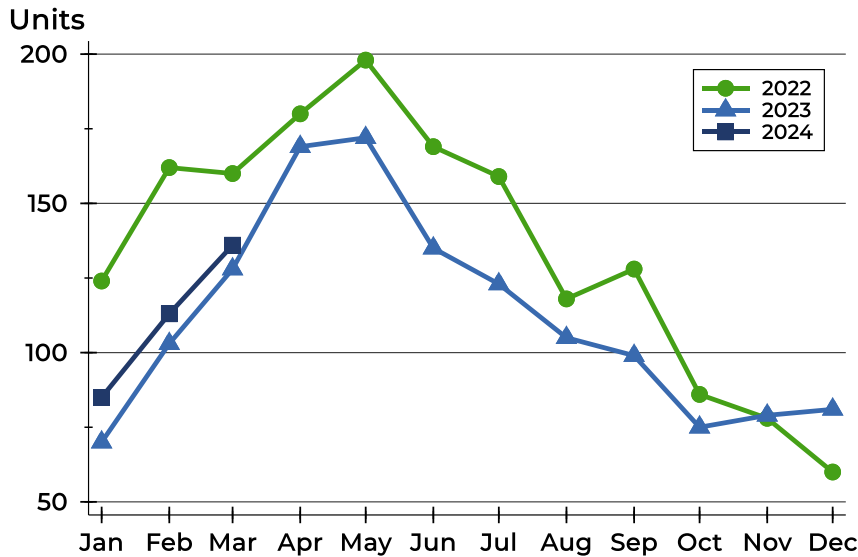
## History of Pending Contracts





## Riley County Pending Contracts Analysis

### Pending Contracts by Month



Month	2022	2023	2024
January	124	70	<b>85</b>
February	162	103	<b>113</b>
March	160	128	<b>136</b>
April	180	169	
May	198	172	
June	169	135	
July	159	123	
August	118	105	
September	128	99	
October	86	75	
November	78	79	
December	60	81	

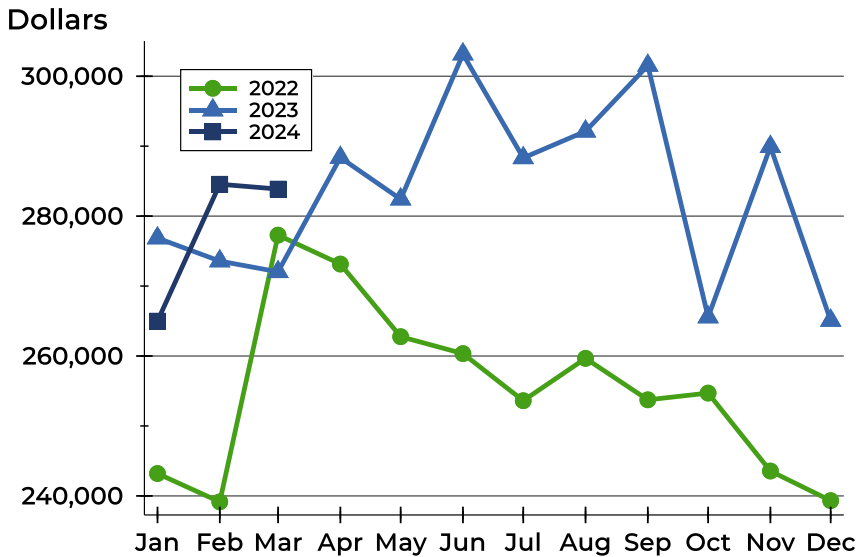
### Pending Contracts by Price Range

Price Range	Pending Contracts		List Price		Days on Market		Price as % of Orig.	
	Number	Percent	Average	Median	Avg.	Med.	Avg.	Med.
Below \$25,000	0	0.0%	N/A	N/A	N/A	N/A	N/A	N/A
\$25,000-\$49,999	0	0.0%	N/A	N/A	N/A	N/A	N/A	N/A
\$50,000-\$99,999	4	2.9%	85,975	89,500	9	7	100.0%	100.0%
\$100,000-\$124,999	7	5.1%	116,214	117,000	106	23	99.7%	100.0%
\$125,000-\$149,999	4	2.9%	134,550	132,250	25	8	100.0%	100.0%
\$150,000-\$174,999	14	10.3%	165,043	167,000	23	4	100.0%	100.0%
\$175,000-\$199,999	11	8.1%	185,455	182,500	19	11	97.5%	100.0%
\$200,000-\$249,999	26	19.1%	224,448	220,000	15	7	100.1%	100.0%
\$250,000-\$299,999	18	13.2%	272,700	267,000	35	11	98.2%	100.0%
\$300,000-\$399,999	29	21.3%	342,652	348,000	25	4	98.6%	100.0%
\$400,000-\$499,999	14	10.3%	444,307	435,000	107	10	98.9%	100.0%
\$500,000-\$749,999	8	5.9%	596,175	587,000	40	16	99.3%	100.0%
\$750,000-\$999,999	1	0.7%	889,500	889,500	789	789	89.8%	89.8%
\$1,000,000 and up	0	0.0%	N/A	N/A	N/A	N/A	N/A	N/A



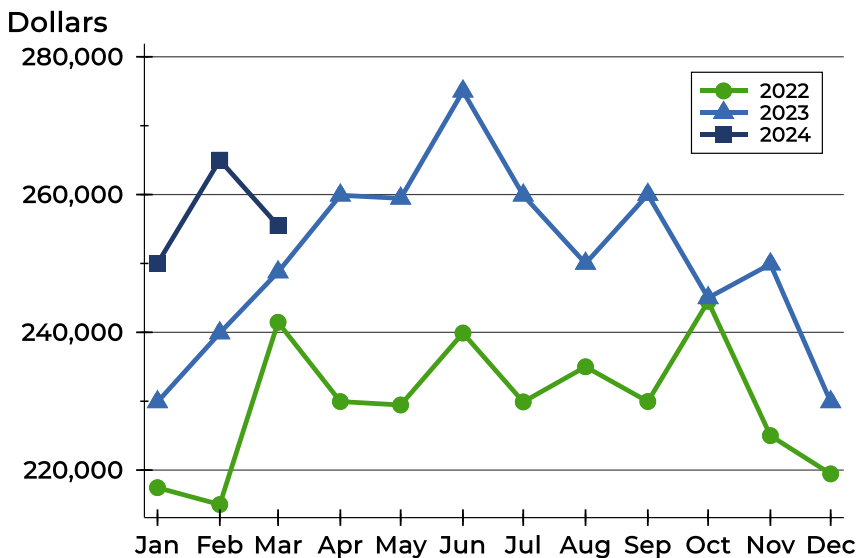
# Riley County Pending Contracts Analysis

## Average Price



Month	2022	2023	2024
January	243,204	276,864	<b>264,992</b>
February	239,149	273,576	<b>284,565</b>
March	277,287	272,038	<b>283,872</b>
April	273,152	288,375	
May	262,768	282,422	
June	260,348	303,159	
July	253,615	288,326	
August	259,667	292,135	
September	253,740	301,537	
October	254,702	265,571	
November	243,560	289,928	
December	239,327	265,080	

## Median Price

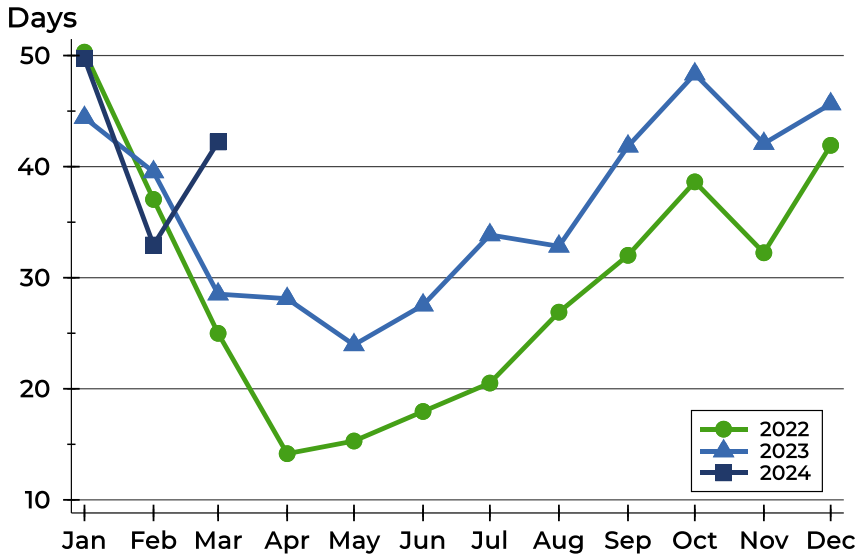


Month	2022	2023	2024
January	217,450	229,900	<b>250,000</b>
February	215,000	239,900	<b>265,000</b>
March	241,460	248,750	<b>255,500</b>
April	229,950	259,900	
May	229,450	259,450	
June	239,900	275,000	
July	229,900	259,900	
August	235,000	250,000	
September	229,950	260,000	
October	244,500	245,000	
November	225,000	249,900	
December	219,450	229,900	



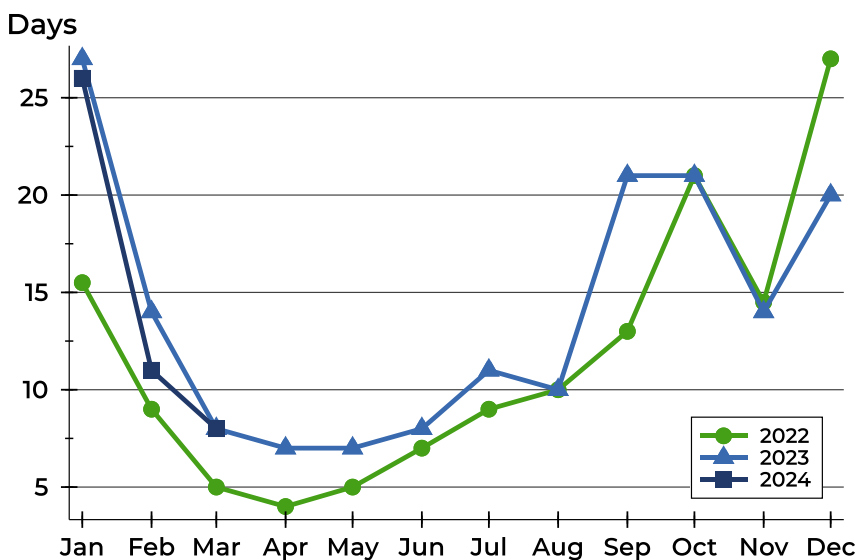
## Riley County Pending Contracts Analysis

### Average DOM



Month	2022	2023	2024
January	50	44	<b>50</b>
February	37	40	<b>33</b>
March	25	29	<b>42</b>
April	14	28	
May	15	24	
June	18	28	
July	21	34	
August	27	33	
September	32	42	
October	39	48	
November	32	42	
December	42	46	

### Median DOM



Month	2022	2023	2024
January	16	27	<b>26</b>
February	9	14	<b>11</b>
March	5	8	<b>8</b>
April	4	7	
May	5	7	
June	7	8	
July	9	11	
August	10	10	
September	13	21	
October	21	21	
November	15	14	
December	27	20	